

Data Path : Z:\pestpcbsrv\HPCHEM1\ECD\_R\Data\PR101923\  
 Data File : PR064082.D  
 Signal(s) : Signal #1: ECD1A.ch Signal #2: ECD2B.ch  
 Acq On : 19 Oct 2023 16:43  
 Operator : AJ\MA  
 Sample : PB156512BL  
 Misc :  
 ALS Vial : 23 Sample Multiplier: 1

Instrument :  
 ECD\_R  
 ClientSampleId :

Integration File signal 1: autoint1.e  
 Integration File signal 2: autoint2.e  
 Quant Time: Oct 19 21:46:38 2023  
 Quant Method : Z:\pestpcbsrv\HPCHEM1\ECD\_R\Method\PR101223CLP.M  
 Quant Title : GC EXTRACTABLES  
 QLast Update : Fri Oct 13 05:04:13 2023  
 Response via : Initial Calibration  
 Integrator: ChemStation

Volume Inj. : 1 µl  
 Signal #1 Phase : ZB MR1 Signal #2 Phase: ZB MR2  
 Signal #1 Info : 30Mx0.32mmx 0.5µm Signal #2 Info : 30M x 0.32mm x 0.25µm

Compound	RT#1	RT#2	Resp#1	Resp#2	ng/ml	ng/ml
-----						
System Monitoring Compounds						
1) SA Tetrachlo...	3.748	3.023	131.2E6	75934262	18.319	18.397
2) SA Decachlor...	9.785	8.433	102.3E6	67061922	21.894	22.093
Target Compounds						
3) L1 AR-1016-1	4.969	4.171	481769	259762	2.240	1.787
4) L1 AR-1016-2	4.969	4.189	481769	65454	1.470	0.327 #
5) L1 AR-1016-3	5.105f	4.403	729566	289065	3.527	2.622 #
6) L1 AR-1016-4	5.105f	4.437	729566	118816	4.479	1.373 #
7) L1 AR-1016-5	0.000	4.709f	0	715820	N.D.	6.266 #
8) L2 AR-1221-1	3.979	3.243	1024897	138824	12.546	2.564 #
9) L2 AR-1221-2	4.066	3.335	1877312	1091403	34.534	28.184
10) L2 AR-1221-3	4.117	3.424	1382784	830442	7.705	6.622
11) L3 AR-1232-1	4.117	3.424	1382784	830442	9.301	7.931
12) L3 AR-1232-2	4.629f	4.189	684631	65454	8.399	0.701 #
13) L3 AR-1232-3	4.969	4.403	481769	289065	3.219	5.712 #
14) L3 AR-1232-4	5.105f	4.448	729566	289745	10.001	6.345 #
15) L3 AR-1232-5	5.314f	4.709f	473949	715820	8.670	14.199 #
16) L4 AR-1242-1	4.969	4.171	481769	259762	2.668	2.113
17) L4 AR-1242-2	4.969	4.189	481769	65454	1.756	0.389 #
18) L4 AR-1242-3	5.105f	4.403	729566	289065	4.149	3.107 #
19) L4 AR-1242-4	5.105f	4.448	729566	289745	5.337	3.188 #
20) L4 AR-1242-5	5.989	5.033	719995	130757	4.863	1.180 #
21) L5 AR-1248-1	4.969	4.171	481769	259762	3.493	2.754
22) L5 AR-1248-2	5.314f	4.437	473949	118816	2.420	0.913 #
23) L5 AR-1248-3	0.000	4.448	0	289745	N.D.	2.149 #
24) L5 AR-1248-4	5.912	4.709f	2267103	715820	9.157	4.450 #
25) L5 AR-1248-5	5.989	5.081	719995	99978	2.873	0.661 #
26) L6 AR-1254-1	5.912	5.033	2267103	130757	9.042	0.567 #
27) L6 AR-1254-2	0.000	5.179	0	169469	N.D.	0.856 #
28) L6 AR-1254-3	6.536	5.643	1027558	201519	2.637	0.644 #
29) L6 AR-1254-4	6.839	5.880	756171	313829	2.827	1.670 #
30) L6 AR-1254-5	7.267f	6.329	4297588	124776	14.617	0.457 #
31) L7 AR-1260-1	0.000	5.769	0	267259	N.D.	1.190 #
32) L7 AR-1260-2	6.961f	5.946f	838826	514584	2.426	1.951
33) L7 AR-1260-3	7.454f	6.161	640948	1083301	2.495	4.284 #
34) L7 AR-1260-4	7.634	6.693	963400	146305	3.409	0.742 #
35) L7 AR-1260-5	0.000	6.919	0	224743	N.D.	0.529 #
36) L8 AR-1262-1	7.454f	6.388	640948	282282	1.702	0.970 #
37) L8 AR-1262-2	0.000	6.919	0	224743	N.D.	0.482 #
38) L8 AR-1262-3	0.000	7.229	0	253419	N.D.	1.388 #
39) L8 AR-1262-4	8.386	7.304	1622949	92939	5.039	0.276 #
40) L8 AR-1262-5	8.970f	7.886	234046	161060	1.065	1.102
41) L9 AR-1268-1	0.000	7.229	0	253419	N.D.	0.487 #

Data Path : Z:\pestpcbsrv\HPCHEM1\ECD\_R\Data\PR101923\  
 Data File : PR064082.D  
 Signal(s) : Signal #1: ECD1A.ch Signal #2: ECD2B.ch  
 Acq On : 19 Oct 2023 16:43  
 Operator : AJ\MA  
 Sample : PB156512BL  
 Misc :  
 ALS Vial : 23 Sample Multiplier: 1

Instrument :  
 ECD\_R  
 ClientSampleId :

Integration File signal 1: autoint1.e  
 Integration File signal 2: autoint2.e  
 Quant Time: Oct 19 21:46:38 2023  
 Quant Method : Z:\pestpcbsrv\HPCHEM1\ECD\_R\Method\PR101223CLP.M  
 Quant Title : GC EXTRACTABLES  
 QLast Update : Fri Oct 13 05:04:13 2023  
 Response via : Initial Calibration  
 Integrator: ChemStation

Volume Inj. : 1 µl  
 Signal #1 Phase : ZB MR1 Signal #2 Phase: ZB MR2  
 Signal #1 Info : 30Mx0.32mmx 0.5µm Signal #2 Info : 30M x 0.32mm x 0.25µm

	Compound	RT#1	RT#2	Resp#1	Resp#2	ng/ml	ng/ml
42)	L9 AR-1268-2	8.386	7.304	1622949	92939	2.446	0.197 #
43)	L9 AR-1268-3	8.633	7.544	1051137	203040	1.825	0.508 #
44)	L9 AR-1268-4	8.970f	7.886	234046	161060	1.001	0.990
45)	L9 AR-1268-5	9.456	8.170	1000536	518263	0.562	0.443

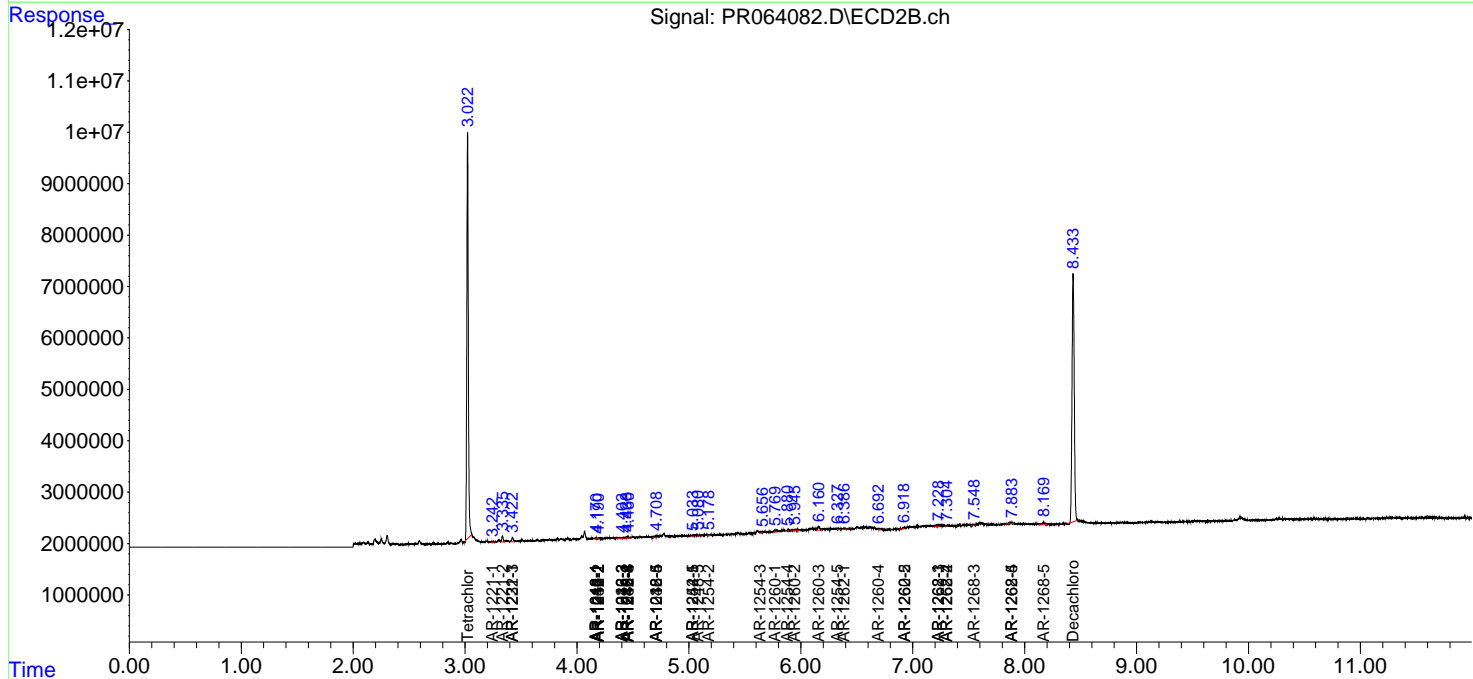
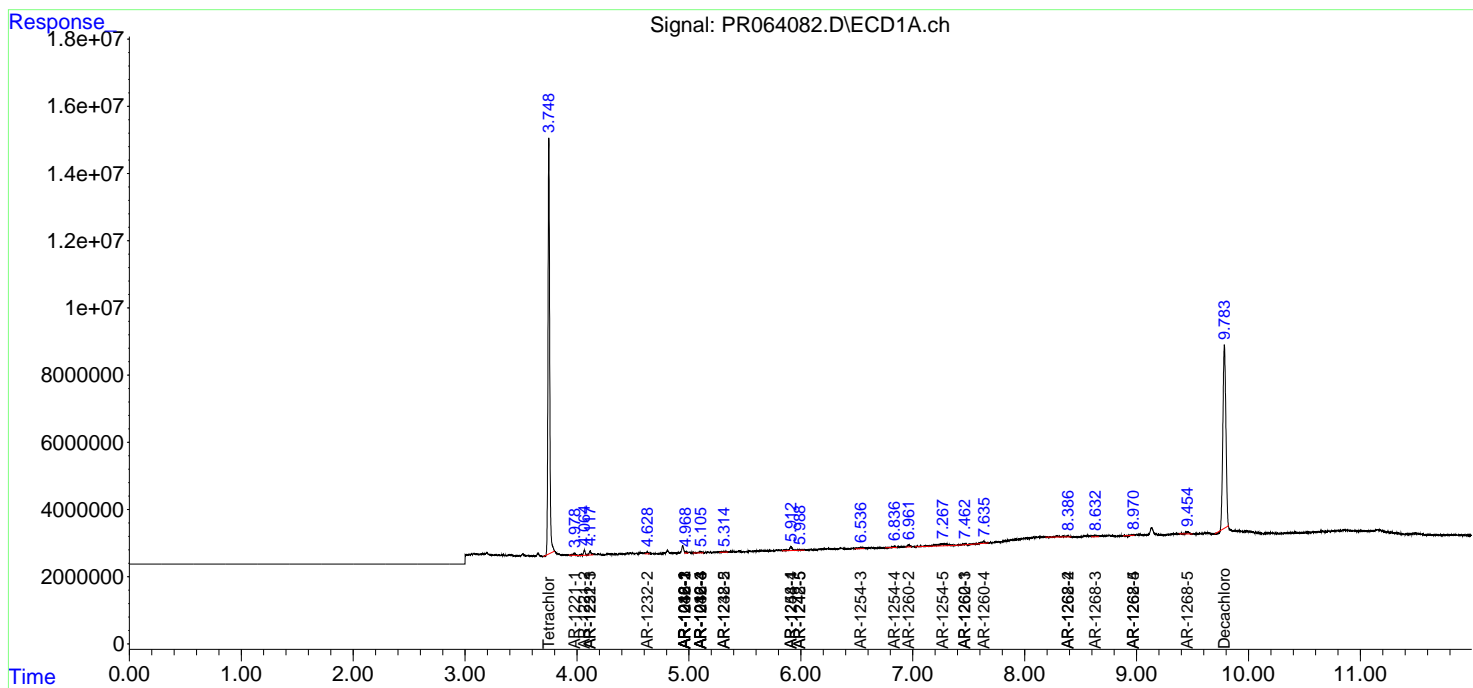
(f)=RT Delta > 1/2 Window (#)=Amounts differ by > 25% (m)=manual int.

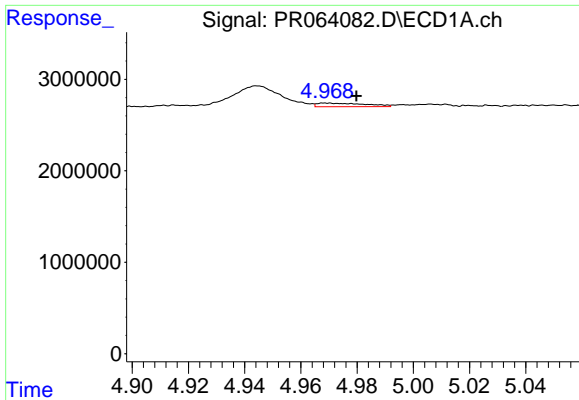
Data Path : Z:\pestpcbsrv\HPCHEM1\ECD\_R\Data\PR101923\  
 Data File : PR064082.D  
 Signal(s) : Signal #1: ECD1A.ch Signal #2: ECD2B.ch  
 Acq On : 19 Oct 2023 16:43  
 Operator : AJ\MA  
 Sample : PB156512BL  
 Misc :  
 ALS Vial : 23 Sample Multiplier: 1

Instrument :  
 ECD\_R  
 ClientSampleId :

Integration File signal 1: autoint1.e  
 Integration File signal 2: autoint2.e  
 Quant Time: Oct 19 21:46:38 2023  
 Quant Method : Z:\pestpcbsrv\HPCHEM1\ECD\_R\Method\PR101223CLP.M  
 Quant Title : GC EXTRACTABLES  
 QLast Update : Fri Oct 13 05:04:13 2023  
 Response via : Initial Calibration  
 Integrator: ChemStation

Volume Inj. : 1 µl  
 Signal #1 Phase : ZB MR1 Signal #2 Phase: ZB MR2  
 Signal #1 Info : 30Mx0.32mmx 0.5µm Signal #2 Info : 30M x 0.32mm x 0.25µm

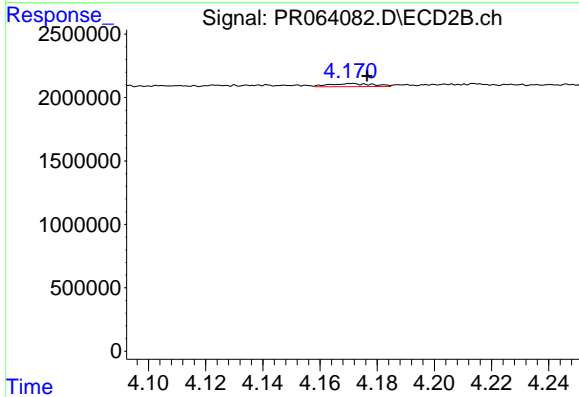




#3 AR-1016-1

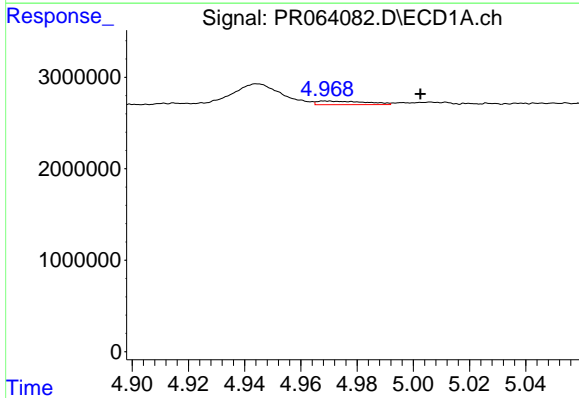
R.T.: 4.969 min  
 Delta R.T.: -0.011 min  
 Response: 481769  
 Conc: 2.24 ng/ml

Instrument :  
 ECD\_R  
 ClientSampleId :



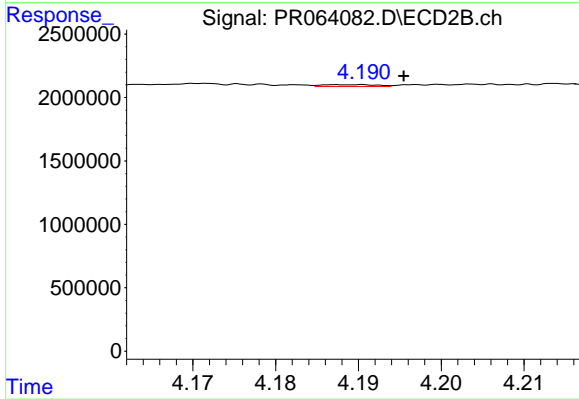
#3 AR-1016-1

R.T.: 4.171 min  
 Delta R.T.: -0.005 min  
 Response: 259762  
 Conc: 1.79 ng/ml



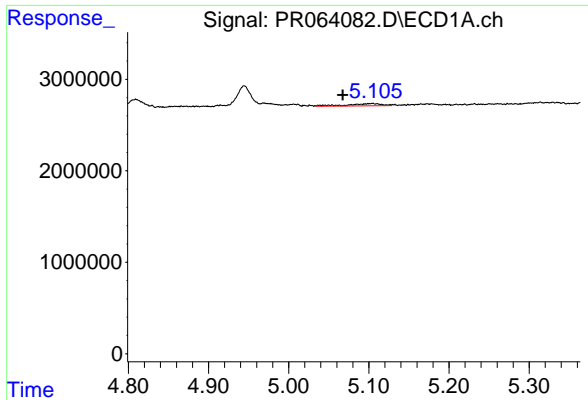
#4 AR-1016-2

R.T.: 4.969 min  
 Delta R.T.: -0.033 min  
 Response: 481769  
 Conc: 1.47 ng/ml



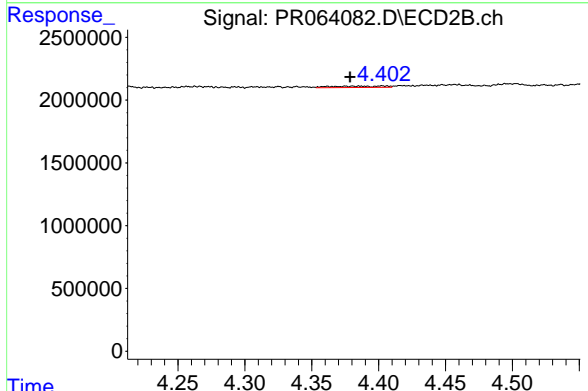
#4 AR-1016-2

R.T.: 4.189 min  
 Delta R.T.: -0.006 min  
 Response: 65454  
 Conc: 0.33 ng/ml

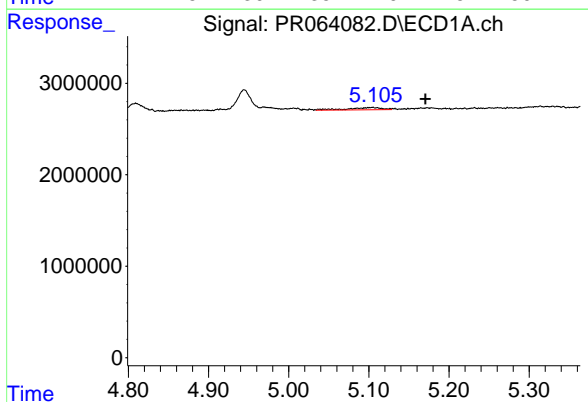


#5 AR-1016-3  
 R.T.: 5.105 min  
 Delta R.T.: 0.037 min  
 Response: 729566  
 Conc: 3.53 ng/ml

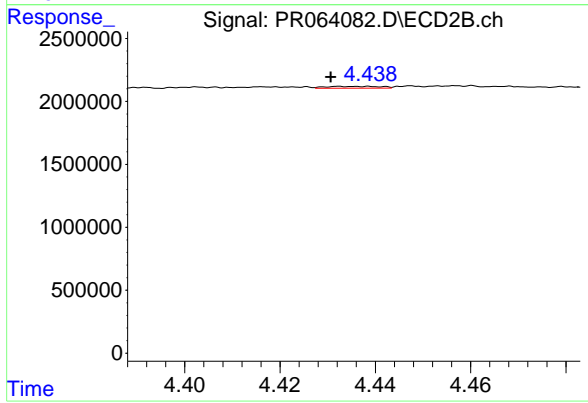
Instrument :  
 ECD\_R  
 ClientSampleId :



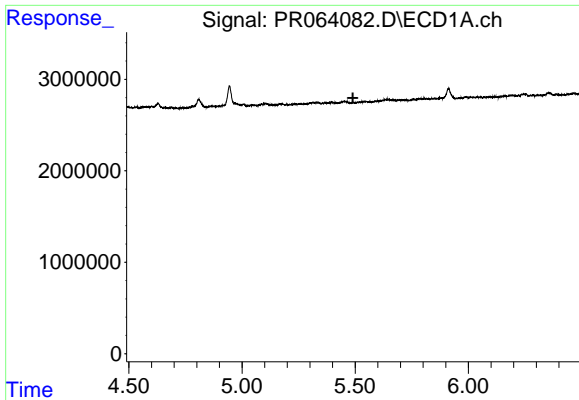
#5 AR-1016-3  
 R.T.: 4.403 min  
 Delta R.T.: 0.024 min  
 Response: 289065  
 Conc: 2.62 ng/ml



#6 AR-1016-4  
 R.T.: 5.105 min  
 Delta R.T.: -0.066 min  
 Response: 729566  
 Conc: 4.48 ng/ml



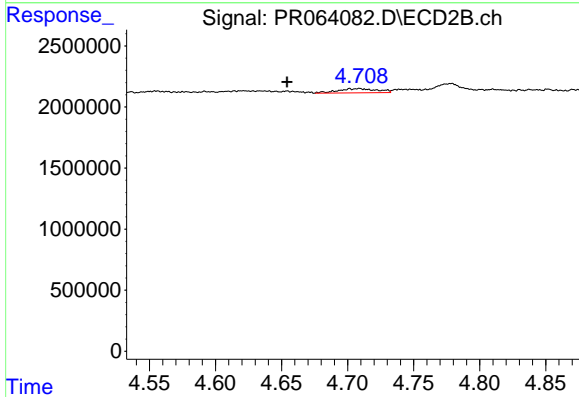
#6 AR-1016-4  
 R.T.: 4.437 min  
 Delta R.T.: 0.006 min  
 Response: 118816  
 Conc: 1.37 ng/ml



#7 AR-1016-5

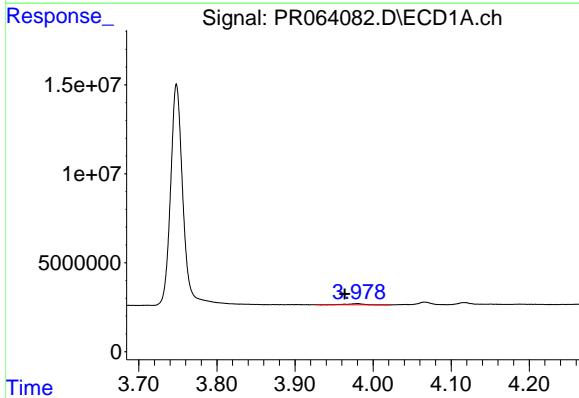
R.T.: 0.000 min  
 Exp R.T.: 5.490 min  
 Response: 0  
 Conc: N.D.

Instrument :  
 ECD\_R  
 ClientSampleId :



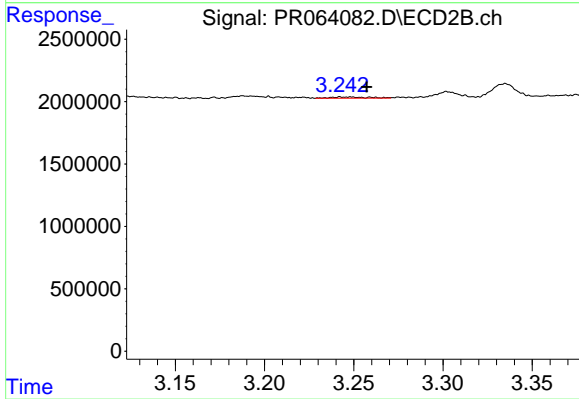
#7 AR-1016-5

R.T.: 4.709 min  
 Delta R.T.: 0.054 min  
 Response: 715820  
 Conc: 6.27 ng/ml



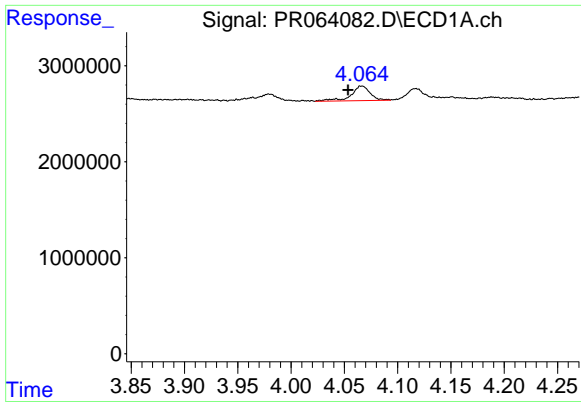
#8 AR-1221-1

R.T.: 3.979 min  
 Delta R.T.: 0.016 min  
 Response: 1024897  
 Conc: 12.55 ng/ml



#8 AR-1221-1

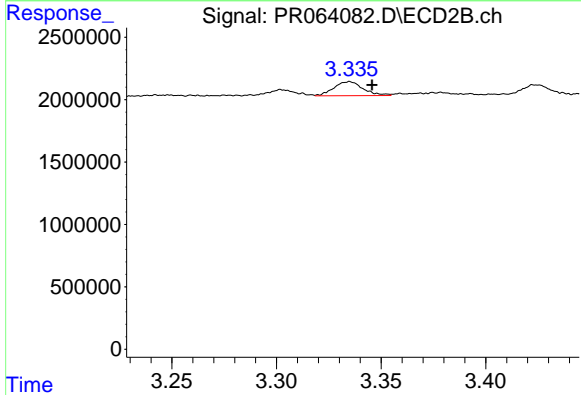
R.T.: 3.243 min  
 Delta R.T.: -0.015 min  
 Response: 138824  
 Conc: 2.56 ng/ml



#9 AR-1221-2

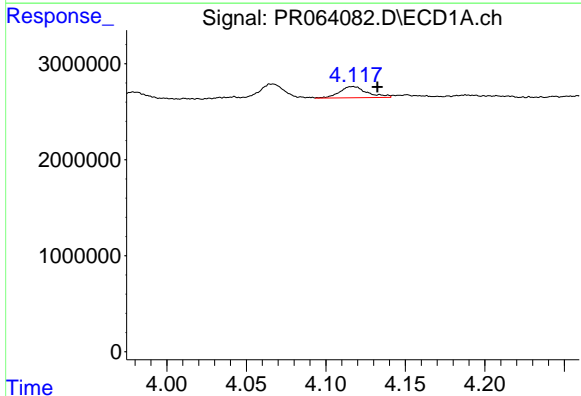
R.T.: 4.066 min  
 Delta R.T.: 0.013 min  
 Response: 1877312  
 Conc: 34.53 ng/ml

Instrument :  
 ECD\_R  
 ClientSampleId :



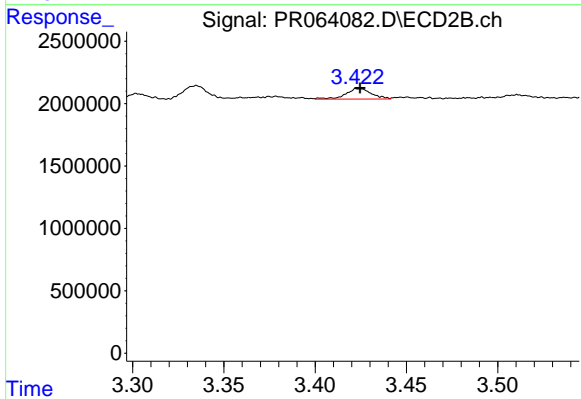
#9 AR-1221-2

R.T.: 3.335 min  
 Delta R.T.: -0.011 min  
 Response: 1091403  
 Conc: 28.18 ng/ml



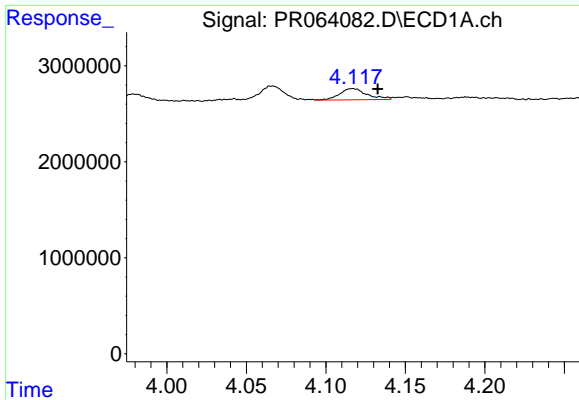
#10 AR-1221-3

R.T.: 4.117 min  
 Delta R.T.: -0.016 min  
 Response: 1382784  
 Conc: 7.70 ng/ml



#10 AR-1221-3

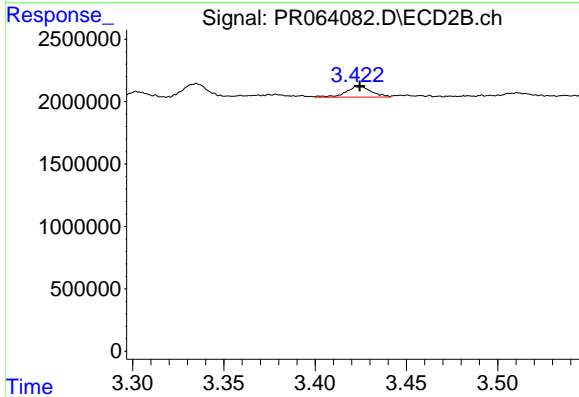
R.T.: 3.424 min  
 Delta R.T.: 0.000 min  
 Response: 830442  
 Conc: 6.62 ng/ml



#11 AR-1232-1

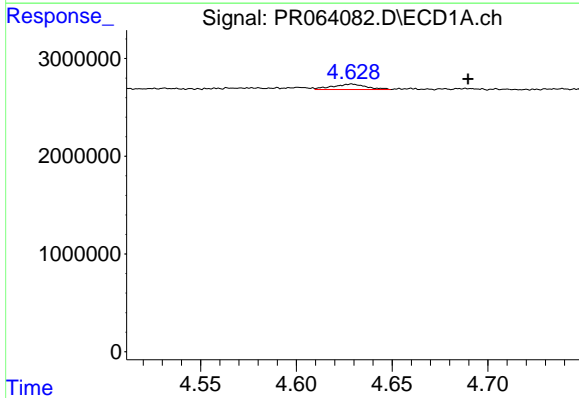
R.T.: 4.117 min  
 Delta R.T.: -0.016 min  
 Response: 1382784  
 Conc: 9.30 ng/ml

Instrument :  
 ECD\_R  
 ClientSampleId :



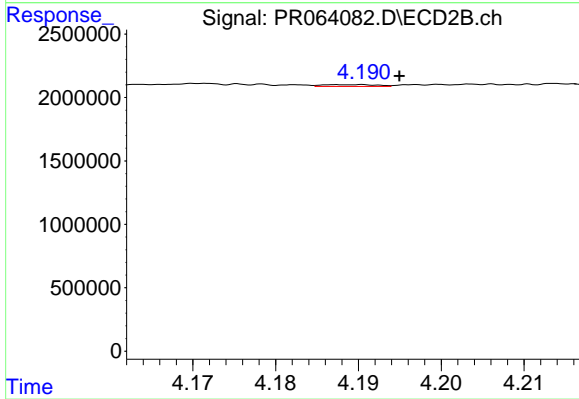
#11 AR-1232-1

R.T.: 3.424 min  
 Delta R.T.: 0.000 min  
 Response: 830442  
 Conc: 7.93 ng/ml



#12 AR-1232-2

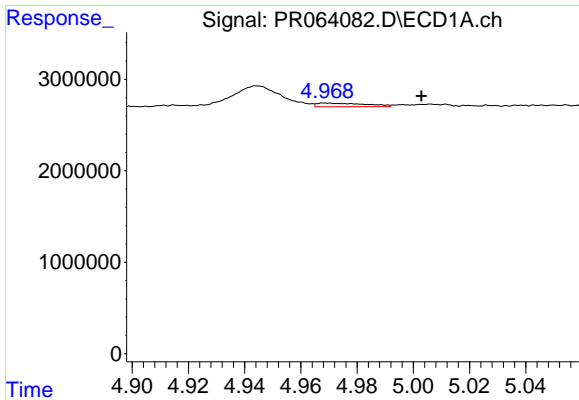
R.T.: 4.629 min  
 Delta R.T.: -0.061 min  
 Response: 684631  
 Conc: 8.40 ng/ml



#12 AR-1232-2

R.T.: 4.189 min  
 Delta R.T.: -0.006 min  
 Response: 65454  
 Conc: 0.70 ng/ml

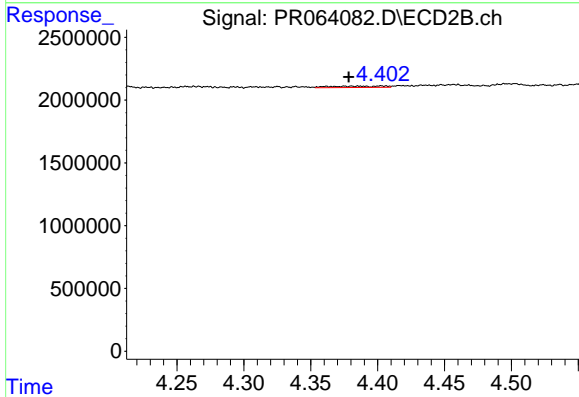




#13 AR-1232-3

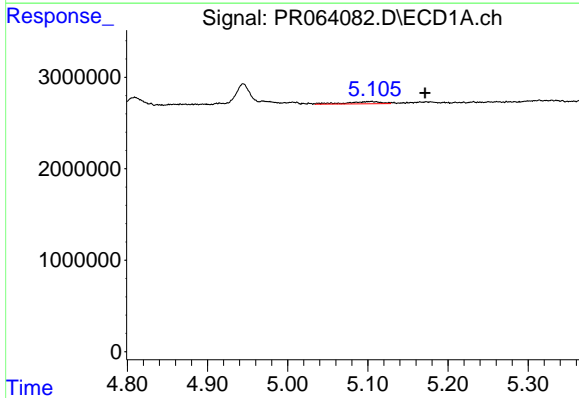
R.T.: 4.969 min  
 Delta R.T.: -0.034 min  
 Response: 481769  
 Conc: 3.22 ng/ml

Instrument :  
 ECD\_R  
 ClientSampleId :



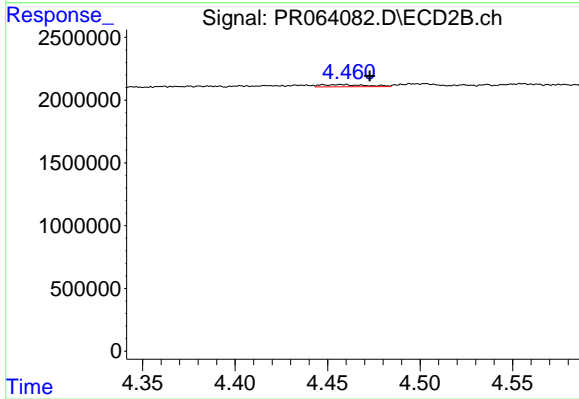
#13 AR-1232-3

R.T.: 4.403 min  
 Delta R.T.: 0.024 min  
 Response: 289065  
 Conc: 5.71 ng/ml



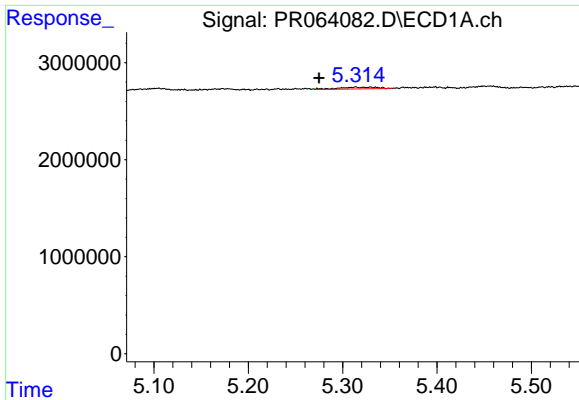
#14 AR-1232-4

R.T.: 5.105 min  
 Delta R.T.: -0.067 min  
 Response: 729566  
 Conc: 10.00 ng/ml



#14 AR-1232-4

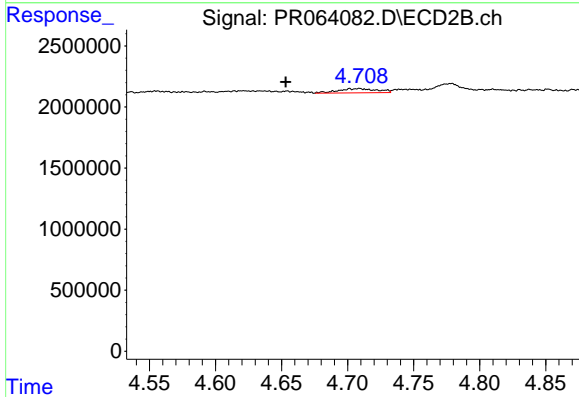
R.T.: 4.448 min  
 Delta R.T.: -0.025 min  
 Response: 289745  
 Conc: 6.35 ng/ml



#15 AR-1232-5

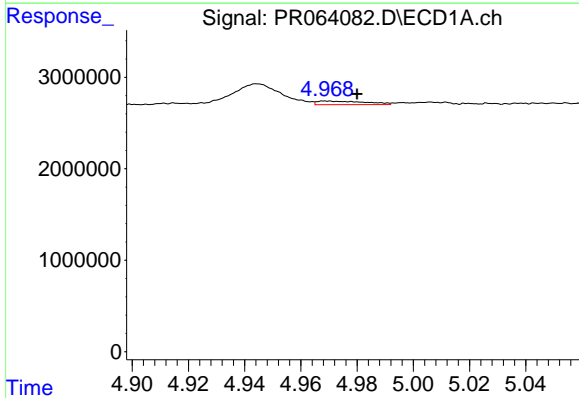
R.T.: 5.314 min  
 Delta R.T.: 0.039 min  
 Response: 473949  
 Conc: 8.67 ng/ml

Instrument :  
 ECD\_R  
 ClientSampleId :



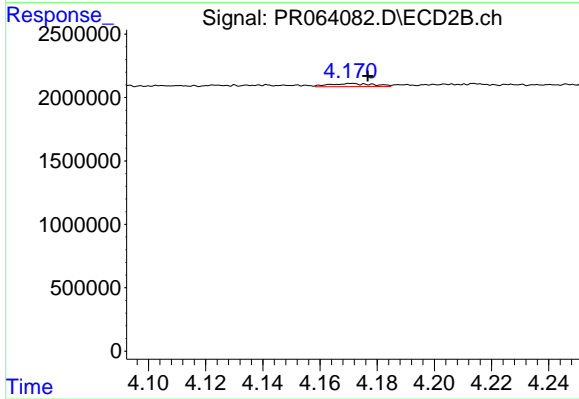
#15 AR-1232-5

R.T.: 4.709 min  
 Delta R.T.: 0.056 min  
 Response: 715820  
 Conc: 14.20 ng/ml



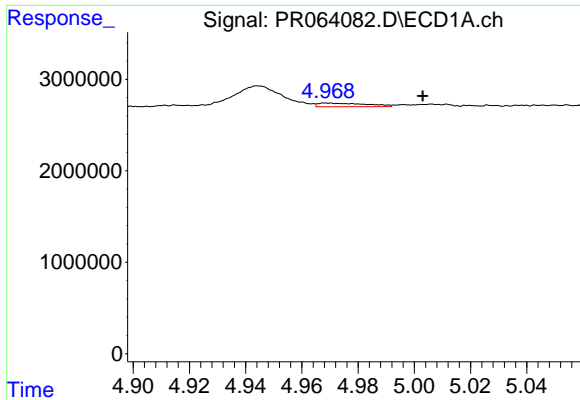
#16 AR-1242-1

R.T.: 4.969 min  
 Delta R.T.: -0.011 min  
 Response: 481769  
 Conc: 2.67 ng/ml



#16 AR-1242-1

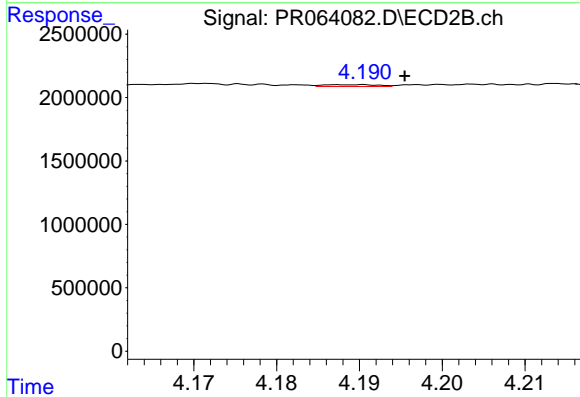
R.T.: 4.171 min  
 Delta R.T.: -0.006 min  
 Response: 259762  
 Conc: 2.11 ng/ml



#17 AR-1242-2

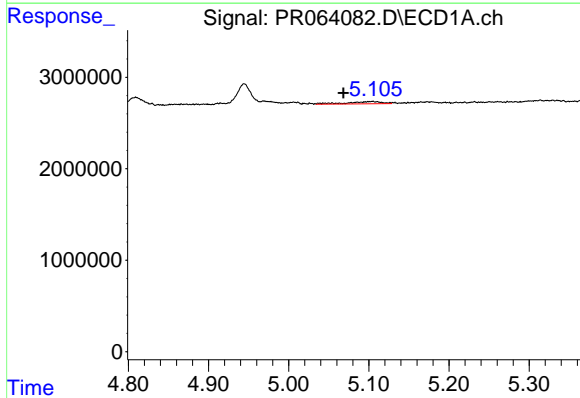
R.T.: 4.969 min  
 Delta R.T.: -0.034 min  
 Response: 481769  
 Conc: 1.76 ng/ml

Instrument :  
 ECD\_R  
 ClientSampleId :



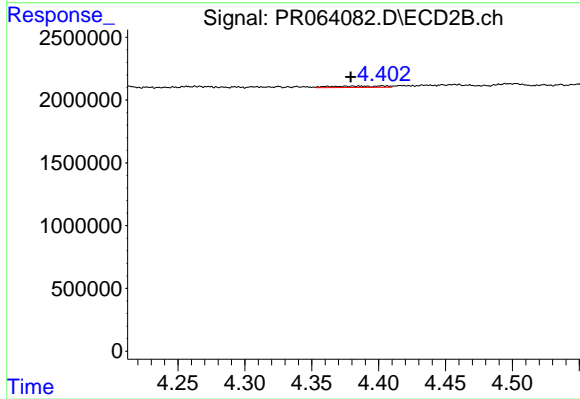
#17 AR-1242-2

R.T.: 4.189 min  
 Delta R.T.: -0.006 min  
 Response: 65454  
 Conc: 0.39 ng/ml



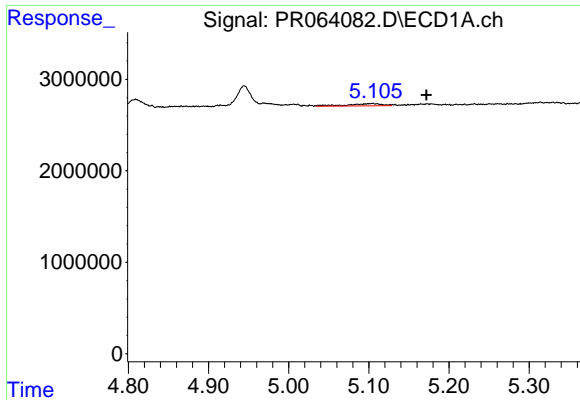
#18 AR-1242-3

R.T.: 5.105 min  
 Delta R.T.: 0.037 min  
 Response: 729566  
 Conc: 4.15 ng/ml



#18 AR-1242-3

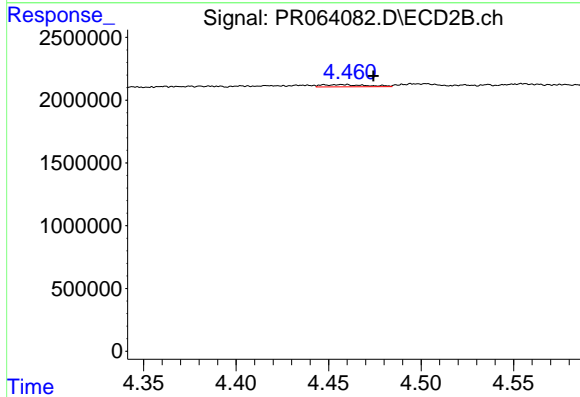
R.T.: 4.403 min  
 Delta R.T.: 0.023 min  
 Response: 289065  
 Conc: 3.11 ng/ml



#19 AR-1242-4

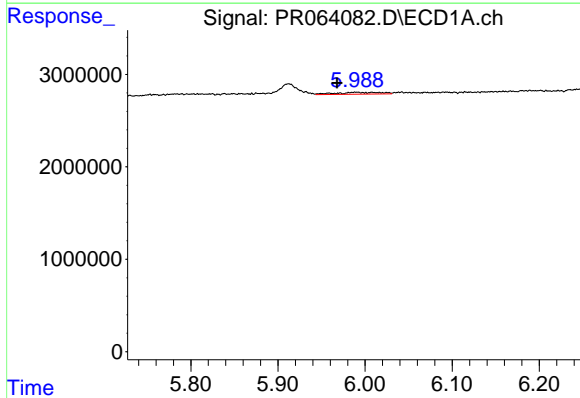
R.T.: 5.105 min  
 Delta R.T.: -0.067 min  
 Response: 729566  
 Conc: 5.34 ng/ml

Instrument :  
 ECD\_R  
 ClientSampleId :



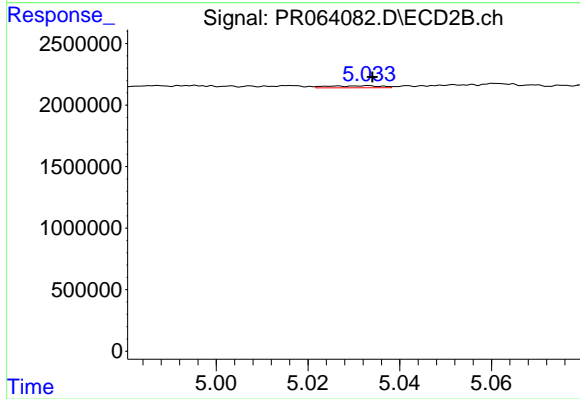
#19 AR-1242-4

R.T.: 4.448 min  
 Delta R.T.: -0.027 min  
 Response: 289745  
 Conc: 3.19 ng/ml



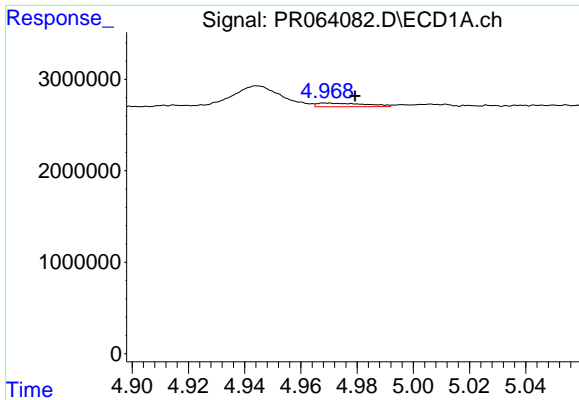
#20 AR-1242-5

R.T.: 5.989 min  
 Delta R.T.: 0.021 min  
 Response: 719995  
 Conc: 4.86 ng/ml



#20 AR-1242-5

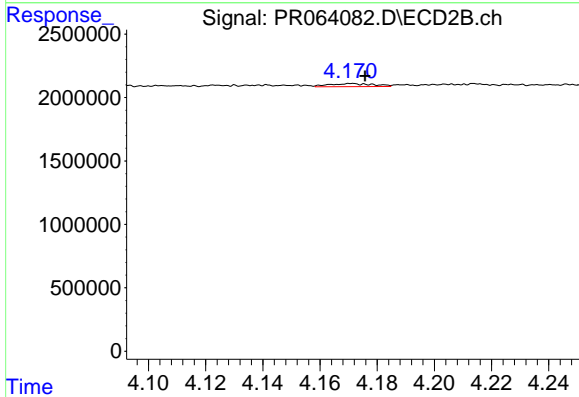
R.T.: 5.033 min  
 Delta R.T.: -0.001 min  
 Response: 130757  
 Conc: 1.18 ng/ml



#21 AR-1248-1

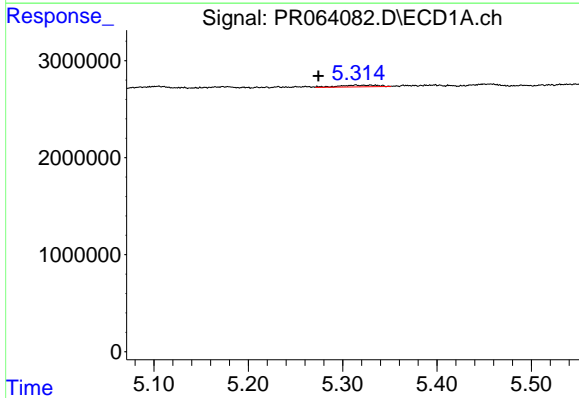
R.T.: 4.969 min  
 Delta R.T.: -0.010 min  
 Response: 481769  
 Conc: 3.49 ng/ml

Instrument :  
 ECD\_R  
 ClientSampleId :



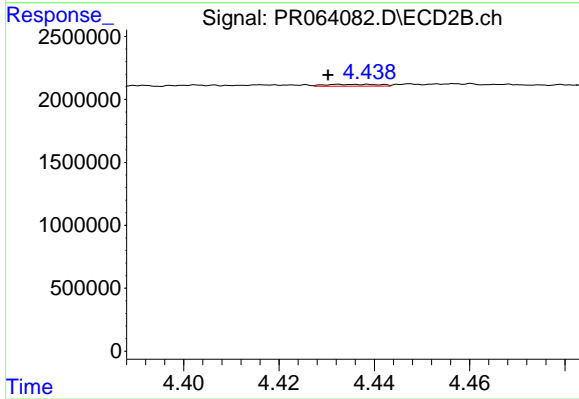
#21 AR-1248-1

R.T.: 4.171 min  
 Delta R.T.: -0.005 min  
 Response: 259762  
 Conc: 2.75 ng/ml



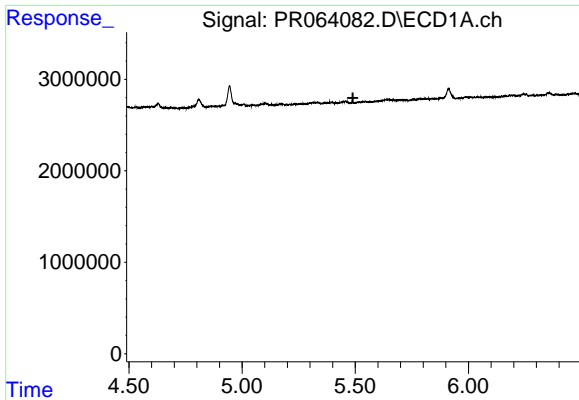
#22 AR-1248-2

R.T.: 5.314 min  
 Delta R.T.: 0.040 min  
 Response: 473949  
 Conc: 2.42 ng/ml



#22 AR-1248-2

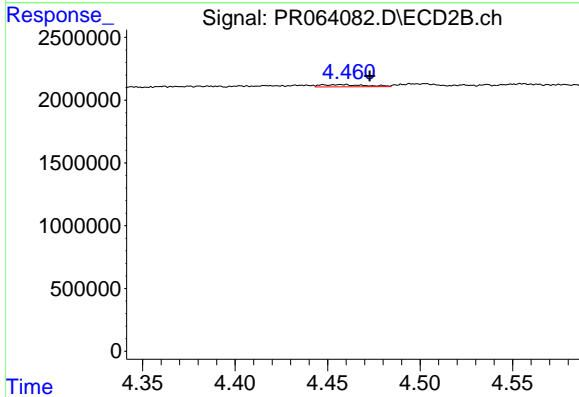
R.T.: 4.437 min  
 Delta R.T.: 0.007 min  
 Response: 118816  
 Conc: 0.91 ng/ml



#23 AR-1248-3

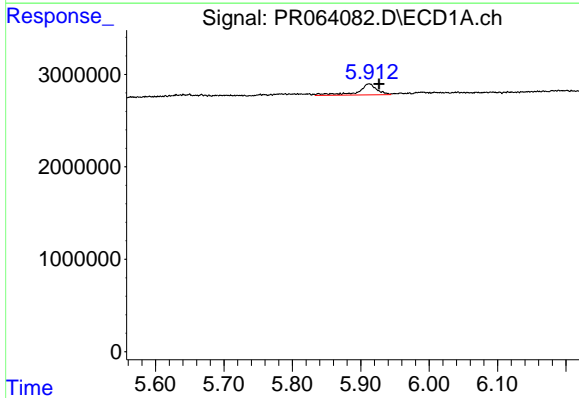
R.T.: 0.000 min  
 Exp R.T.: 5.489 min  
 Response: 0  
 Conc: N.D.

Instrument :  
 ECD\_R  
 ClientSampleId :



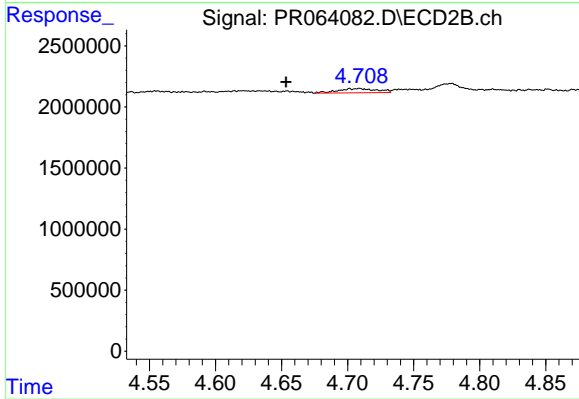
#23 AR-1248-3

R.T.: 4.448 min  
 Delta R.T.: -0.025 min  
 Response: 289745  
 Conc: 2.15 ng/ml



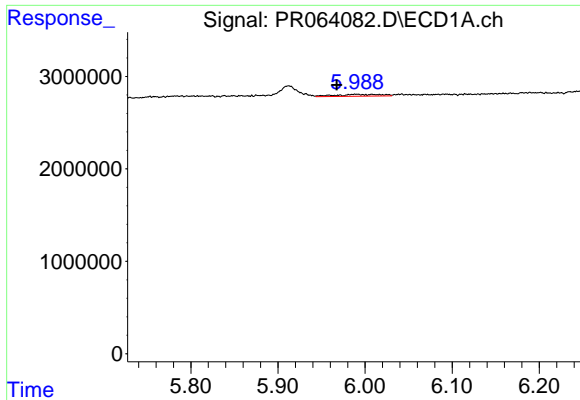
#24 AR-1248-4

R.T.: 5.912 min  
 Delta R.T.: -0.015 min  
 Response: 2267103  
 Conc: 9.16 ng/ml



#24 AR-1248-4

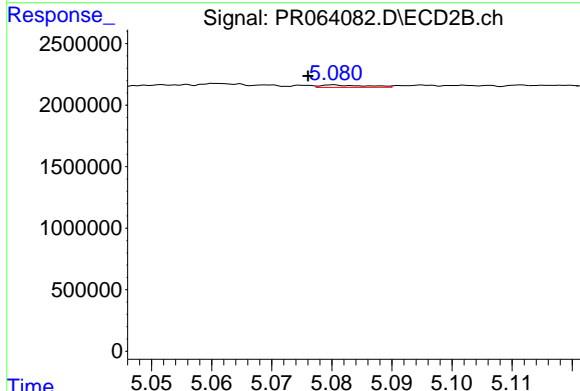
R.T.: 4.709 min  
 Delta R.T.: 0.055 min  
 Response: 715820  
 Conc: 4.45 ng/ml



#25 AR-1248-5

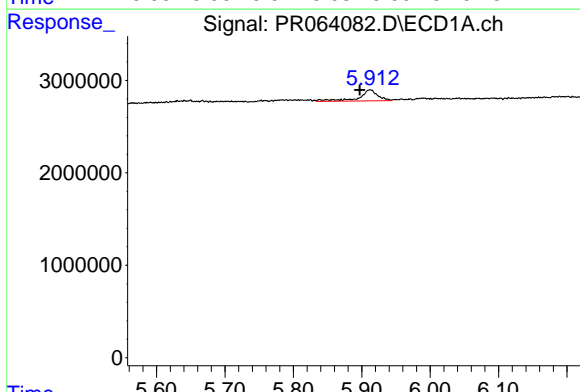
R.T.: 5.989 min  
 Delta R.T.: 0.022 min  
 Response: 719995  
 Conc: 2.87 ng/ml

Instrument :  
 ECD\_R  
 ClientSampleId :



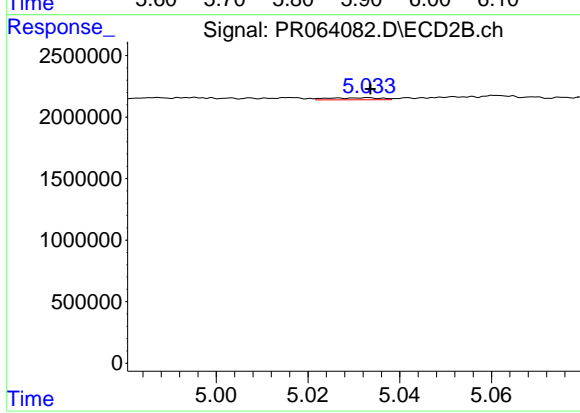
#25 AR-1248-5

R.T.: 5.081 min  
 Delta R.T.: 0.005 min  
 Response: 99978  
 Conc: 0.66 ng/ml



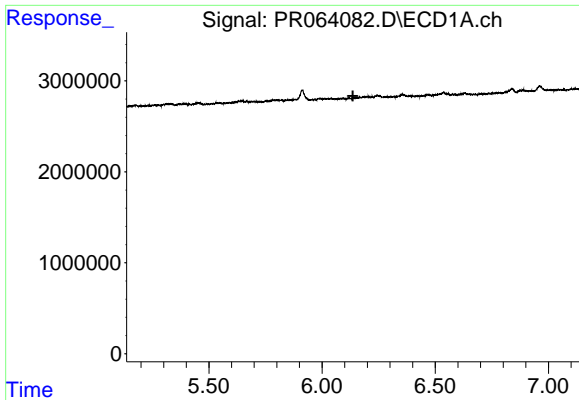
#26 AR-1254-1

R.T.: 5.912 min  
 Delta R.T.: 0.015 min  
 Response: 2267103  
 Conc: 9.04 ng/ml



#26 AR-1254-1

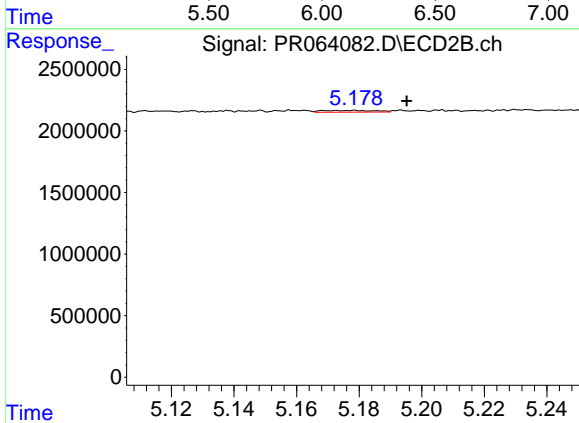
R.T.: 5.033 min  
 Delta R.T.: 0.000 min  
 Response: 130757  
 Conc: 0.57 ng/ml



#27 AR-1254-2

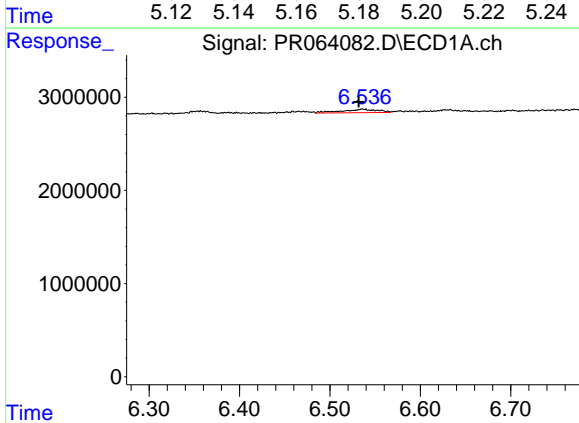
R.T.: 0.000 min  
 Exp R.T.: 6.136 min  
 Response: 0  
 Conc: N.D.

Instrument :  
 ECD\_R  
 ClientSampleId :



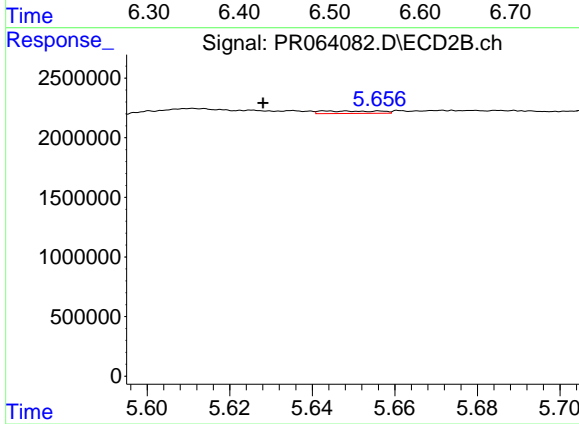
#27 AR-1254-2

R.T.: 5.179 min  
 Delta R.T.: -0.017 min  
 Response: 169469  
 Conc: 0.86 ng/ml



#28 AR-1254-3

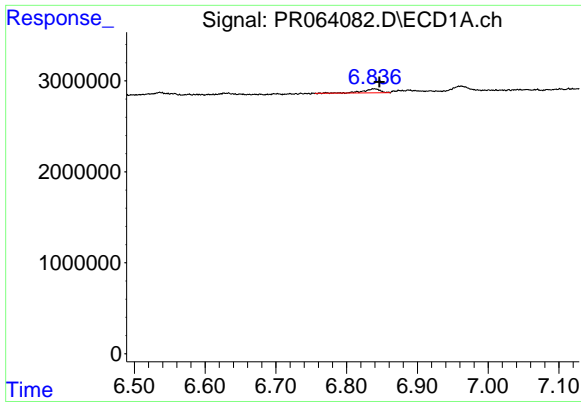
R.T.: 6.536 min  
 Delta R.T.: 0.004 min  
 Response: 1027558  
 Conc: 2.64 ng/ml



#28 AR-1254-3

R.T.: 5.643 min  
 Delta R.T.: 0.015 min  
 Response: 201519  
 Conc: 0.64 ng/ml

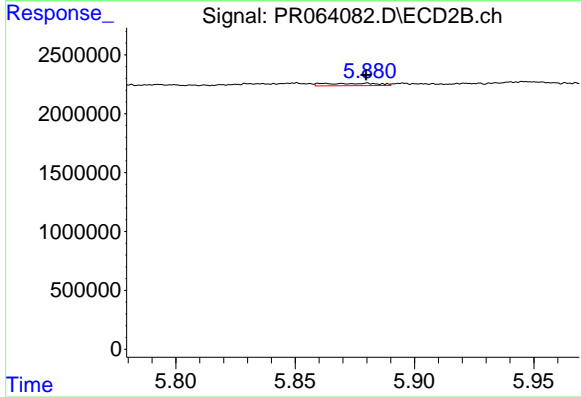




#29 AR-1254-4

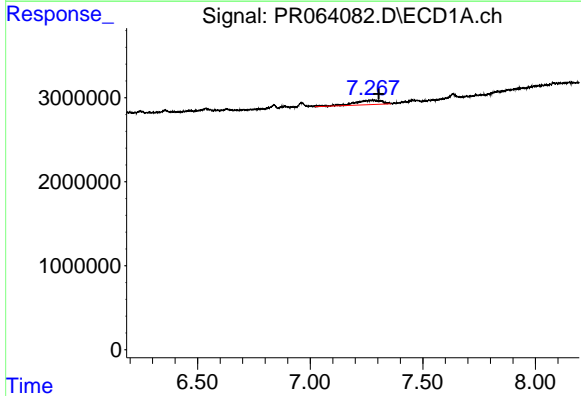
R.T.: 6.839 min  
 Delta R.T.: -0.007 min  
 Response: 756171  
 Conc: 2.83 ng/ml

Instrument :  
 ECD\_R  
 ClientSampleId :



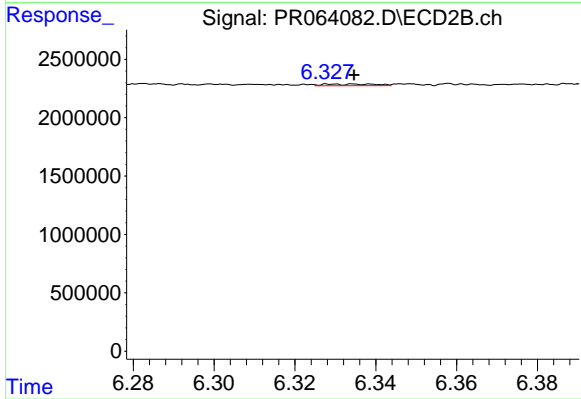
#29 AR-1254-4

R.T.: 5.880 min  
 Delta R.T.: 0.000 min  
 Response: 313829  
 Conc: 1.67 ng/ml



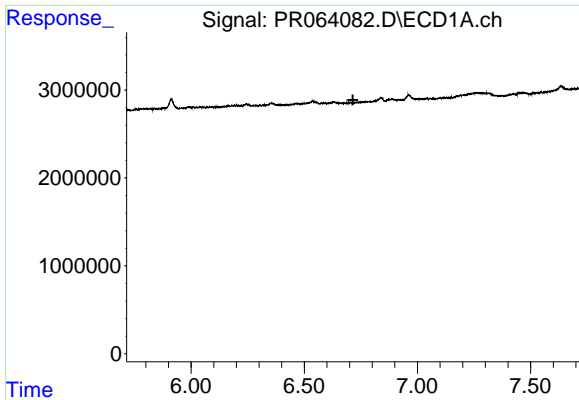
#30 AR-1254-5

R.T.: 7.267 min  
 Delta R.T.: -0.038 min  
 Response: 4297588  
 Conc: 14.62 ng/ml



#30 AR-1254-5

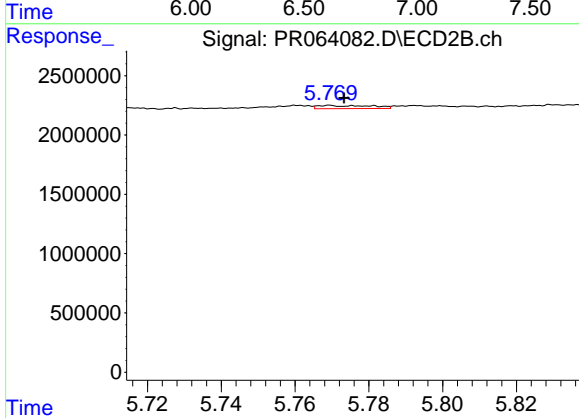
R.T.: 6.329 min  
 Delta R.T.: -0.005 min  
 Response: 124776  
 Conc: 0.46 ng/ml



#31 AR-1260-1

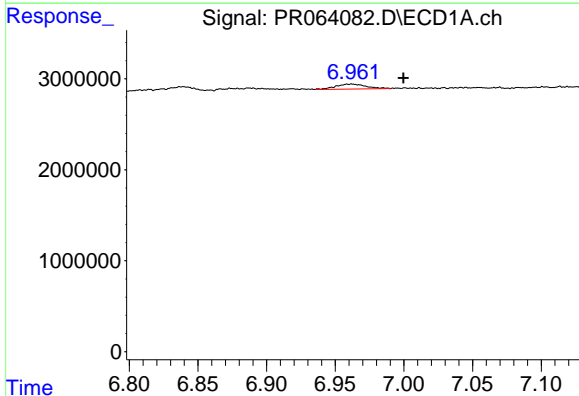
R.T.: 0.000 min  
 Exp R.T.: 6.715 min  
 Response: 0  
 Conc: N.D.

Instrument :  
 ECD\_R  
 ClientSampleId :



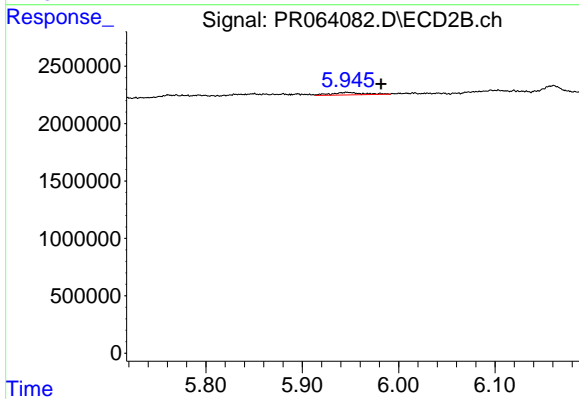
#31 AR-1260-1

R.T.: 5.769 min  
 Delta R.T.: -0.004 min  
 Response: 267259  
 Conc: 1.19 ng/ml



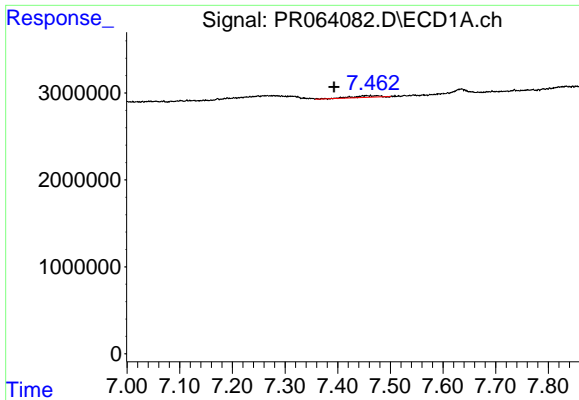
#32 AR-1260-2

R.T.: 6.961 min  
 Delta R.T.: -0.038 min  
 Response: 838826  
 Conc: 2.43 ng/ml



#32 AR-1260-2

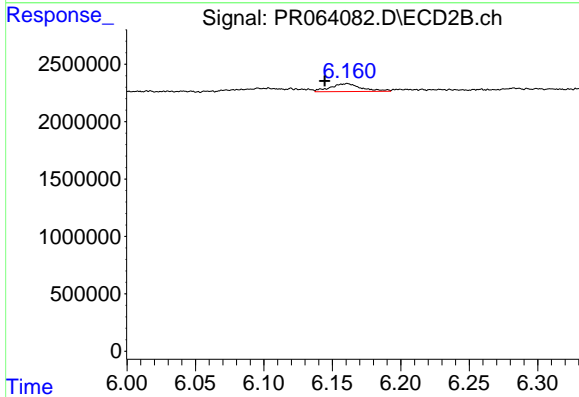
R.T.: 5.946 min  
 Delta R.T.: -0.035 min  
 Response: 514584  
 Conc: 1.95 ng/ml



#33 AR-1260-3

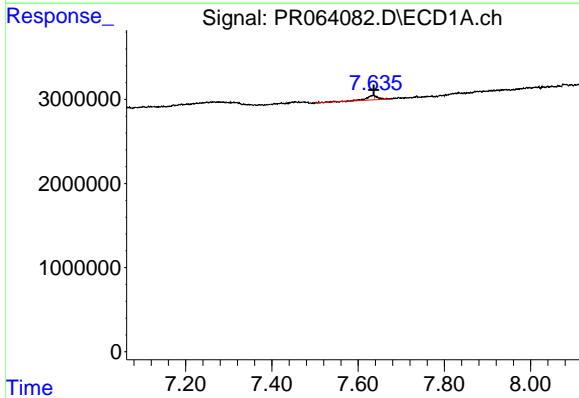
R.T.: 7.454 min  
 Delta R.T.: 0.061 min  
 Response: 640948  
 Conc: 2.49 ng/ml

Instrument :  
 ECD\_R  
 ClientSampleId :



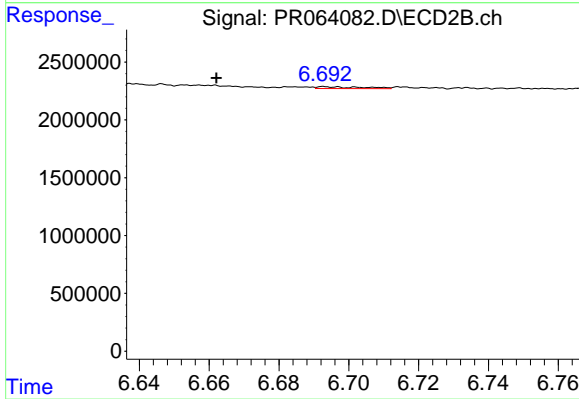
#33 AR-1260-3

R.T.: 6.161 min  
 Delta R.T.: 0.016 min  
 Response: 1083301  
 Conc: 4.28 ng/ml



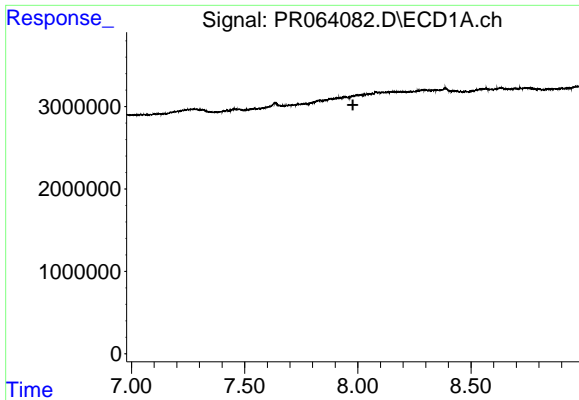
#34 AR-1260-4

R.T.: 7.634 min  
 Delta R.T.: -0.002 min  
 Response: 963400  
 Conc: 3.41 ng/ml



#34 AR-1260-4

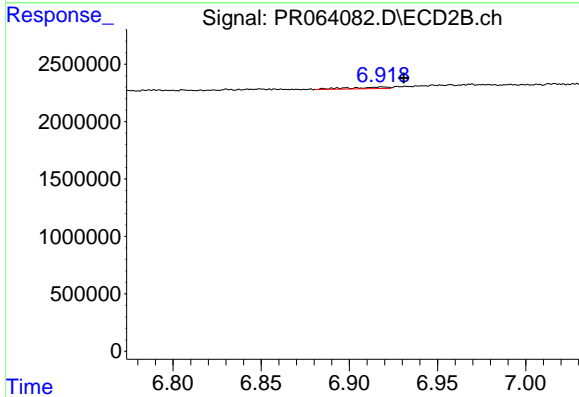
R.T.: 6.693 min  
 Delta R.T.: 0.031 min  
 Response: 146305  
 Conc: 0.74 ng/ml



#35 AR-1260-5

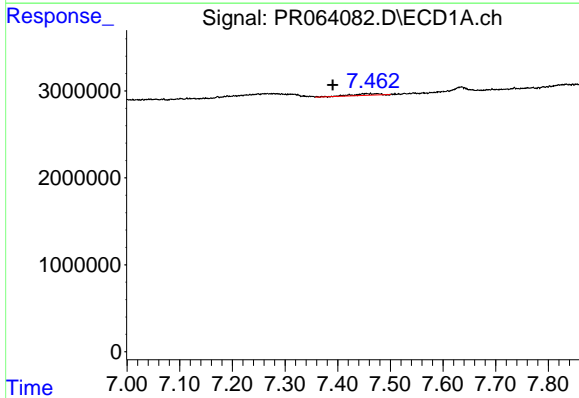
R.T.: 0.000 min  
 Exp R.T.: 7.978 min  
 Response: 0  
 Conc: N.D.

Instrument :  
 ECD\_R  
 ClientSampleId :



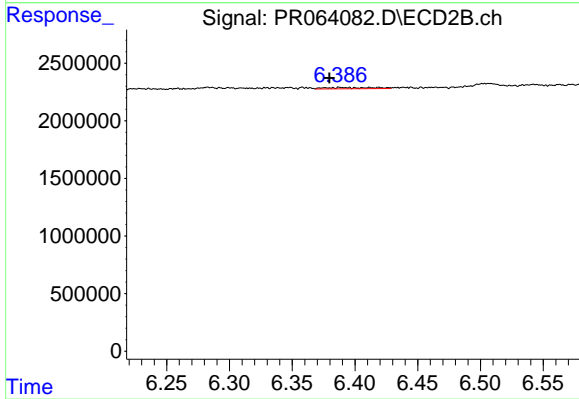
#35 AR-1260-5

R.T.: 6.919 min  
 Delta R.T.: -0.012 min  
 Response: 224743  
 Conc: 0.53 ng/ml



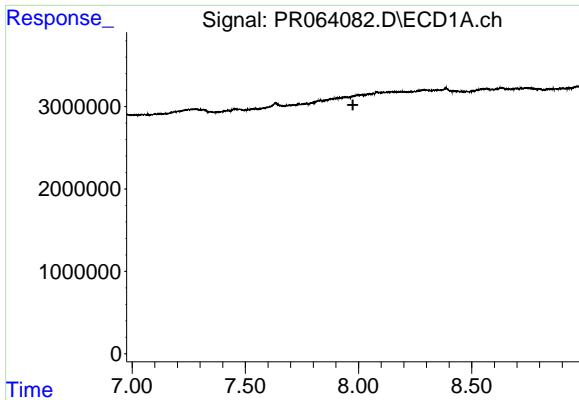
#36 AR-1262-1

R.T.: 7.454 min  
 Delta R.T.: 0.063 min  
 Response: 640948  
 Conc: 1.70 ng/ml



#36 AR-1262-1

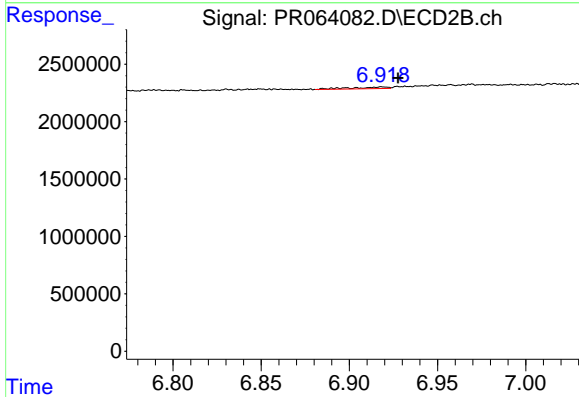
R.T.: 6.388 min  
 Delta R.T.: 0.009 min  
 Response: 282282  
 Conc: 0.97 ng/ml



#37 AR-1262-2

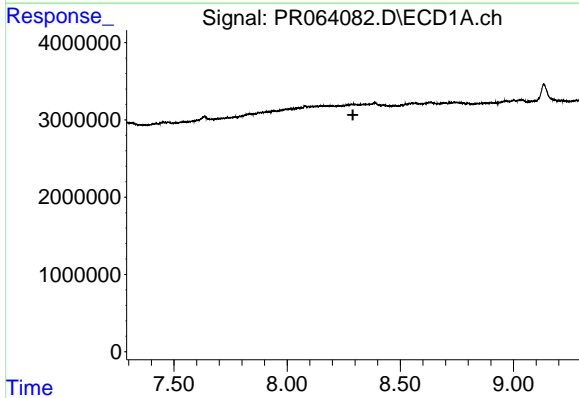
R.T.: 0.000 min  
 Exp R.T. : 7.975 min  
 Response: 0  
 Conc: N.D.

Instrument :  
 ECD\_R  
 ClientSampleId :



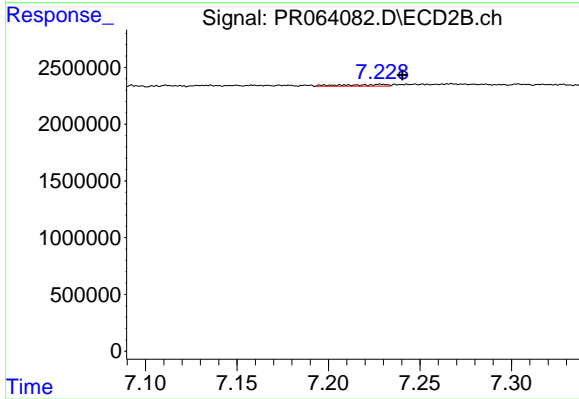
#37 AR-1262-2

R.T.: 6.919 min  
 Delta R.T.: -0.009 min  
 Response: 224743  
 Conc: 0.48 ng/ml



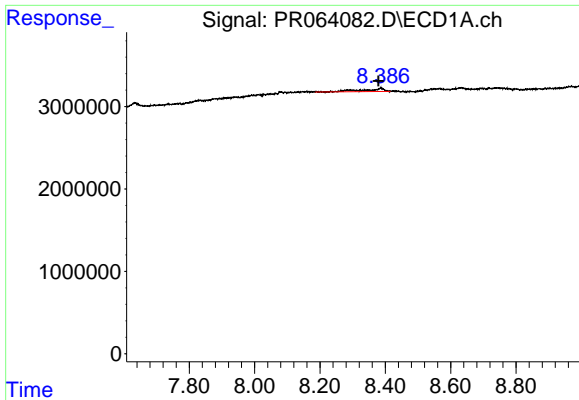
#38 AR-1262-3

R.T.: 0.000 min  
 Exp R.T. : 8.291 min  
 Response: 0  
 Conc: N.D.



#38 AR-1262-3

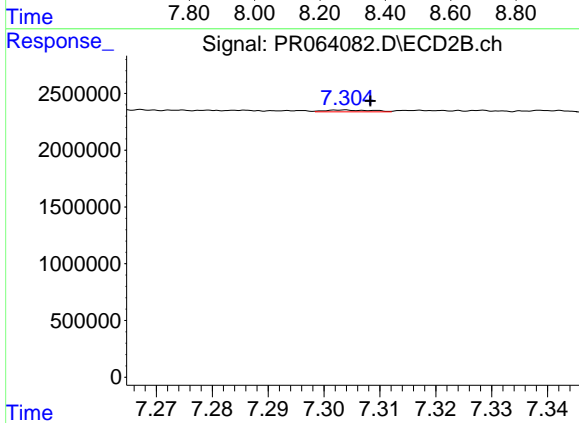
R.T.: 7.229 min  
 Delta R.T.: -0.011 min  
 Response: 253419  
 Conc: 1.39 ng/ml



#39 AR-1262-4

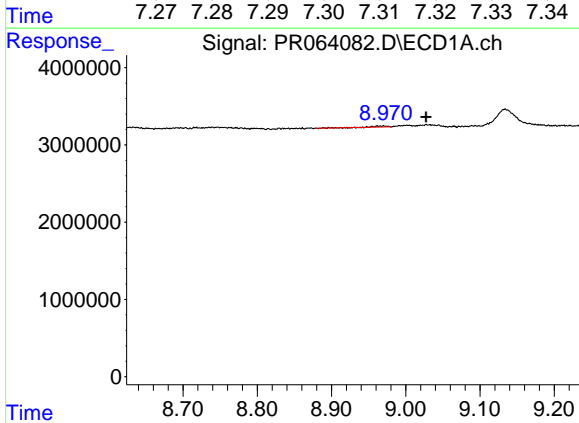
R.T.: 8.386 min  
 Delta R.T.: 0.007 min  
 Response: 1622949  
 Conc: 5.04 ng/ml

Instrument :  
 ECD\_R  
 ClientSampleId :



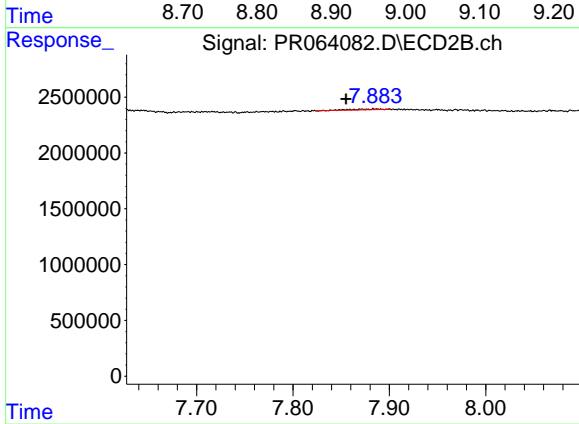
#39 AR-1262-4

R.T.: 7.304 min  
 Delta R.T.: -0.005 min  
 Response: 92939  
 Conc: 0.28 ng/ml



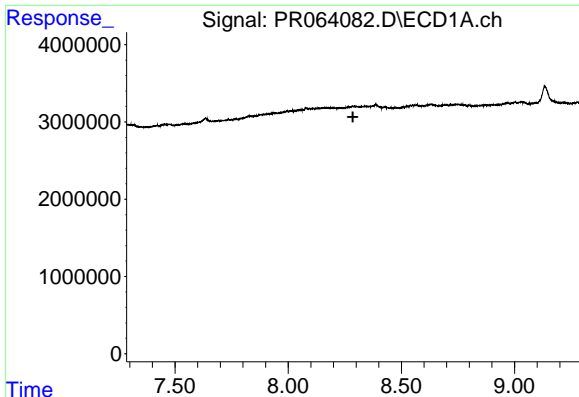
#40 AR-1262-5

R.T.: 8.970 min  
 Delta R.T.: -0.057 min  
 Response: 234046  
 Conc: 1.06 ng/ml



#40 AR-1262-5

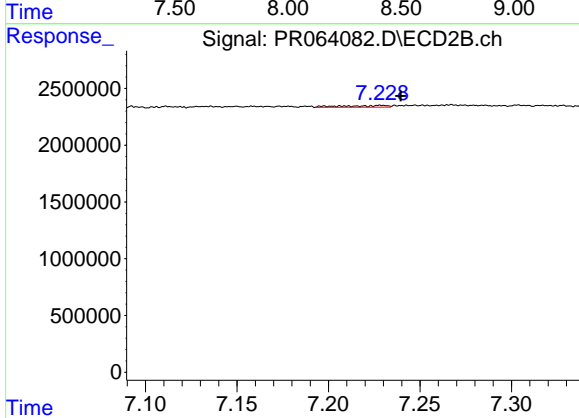
R.T.: 7.886 min  
 Delta R.T.: 0.031 min  
 Response: 161060  
 Conc: 1.10 ng/ml



#41 AR-1268-1

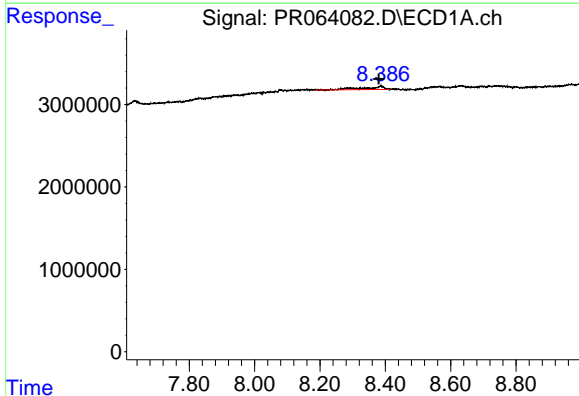
R.T.: 0.000 min  
 Exp R.T.: 8.286 min  
 Response: 0  
 Conc: N.D.

Instrument :  
 ECD\_R  
 ClientSampleId :



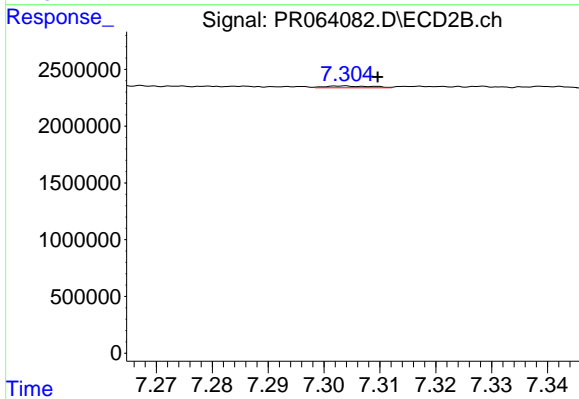
#41 AR-1268-1

R.T.: 7.229 min  
 Delta R.T.: -0.011 min  
 Response: 253419  
 Conc: 0.49 ng/ml



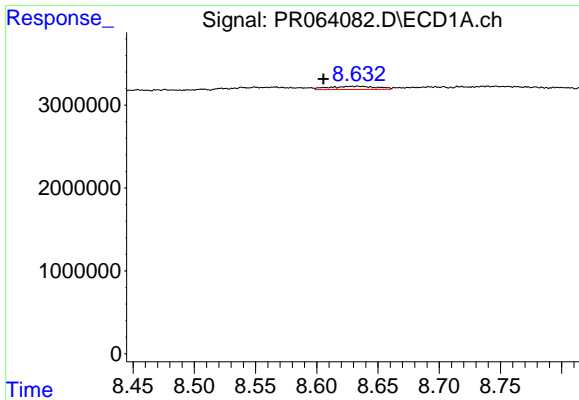
#42 AR-1268-2

R.T.: 8.386 min  
 Delta R.T.: 0.007 min  
 Response: 1622949  
 Conc: 2.45 ng/ml



#42 AR-1268-2

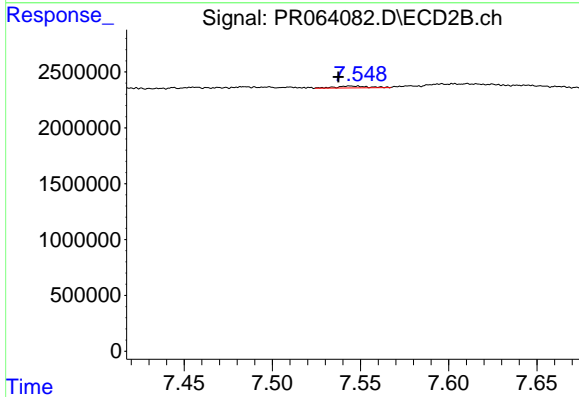
R.T.: 7.304 min  
 Delta R.T.: -0.006 min  
 Response: 92939  
 Conc: 0.20 ng/ml



#43 AR-1268-3

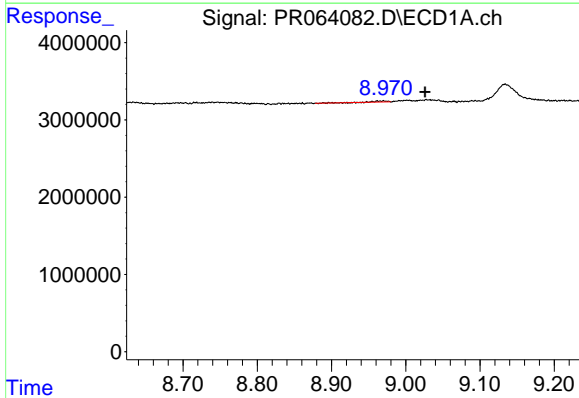
R.T.: 8.633 min  
 Delta R.T.: 0.027 min  
 Response: 1051137  
 Conc: 1.82 ng/ml

Instrument :  
 ECD\_R  
 ClientSampleId :



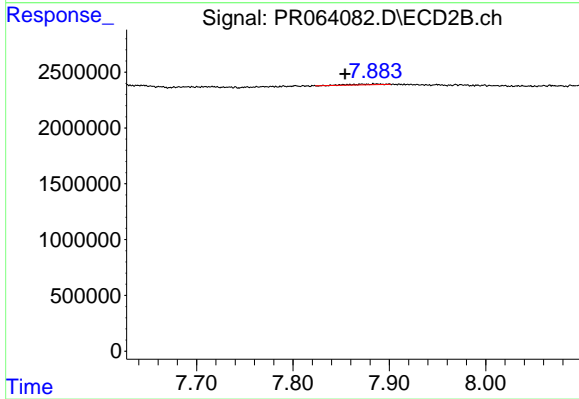
#43 AR-1268-3

R.T.: 7.544 min  
 Delta R.T.: 0.007 min  
 Response: 203040  
 Conc: 0.51 ng/ml



#44 AR-1268-4

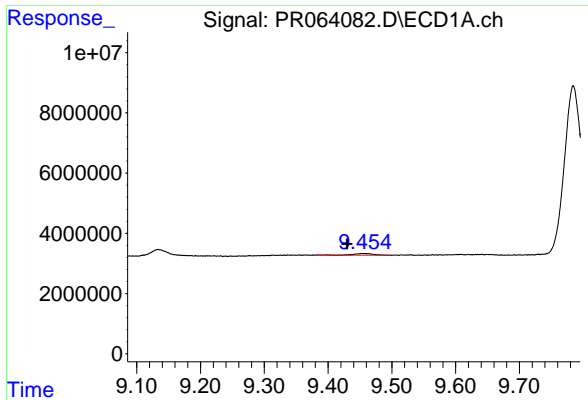
R.T.: 8.970 min  
 Delta R.T.: -0.056 min  
 Response: 234046  
 Conc: 1.00 ng/ml



#44 AR-1268-4

R.T.: 7.886 min  
 Delta R.T.: 0.032 min  
 Response: 161060  
 Conc: 0.99 ng/ml

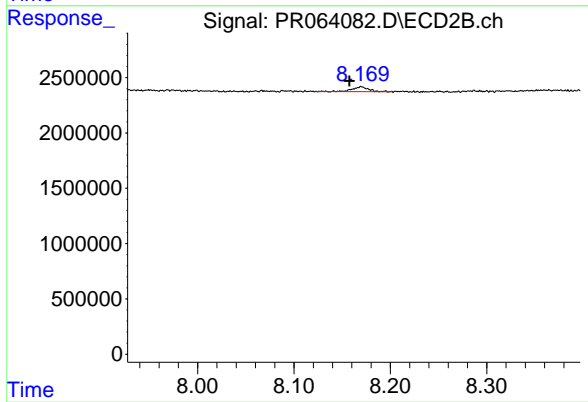




#45 AR-1268-5

R.T.: 9.456 min  
 Delta R.T.: 0.026 min  
 Response: 1000536  
 Conc: 0.56 ng/ml

Instrument :  
 ECD\_R  
 ClientSampleId :



#45 AR-1268-5

R.T.: 8.170 min  
 Delta R.T.: 0.012 min  
 Response: 518263  
 Conc: 0.44 ng/ml