

Data Path : Z:\pestpcbsrv\HPCHEM1\ECD_R\Data\PR102120\
 Data File : PR047885.D
 Signal(s) : Signal #1: ECD1A.ch Signal #2: ECD2B.ch
 Acq On : 20 Oct 2020 21:38
 Operator : AJ\MA
 Sample : AR1232ICC100
 Misc :
 ALS Vial : 13 Sample Multiplier: 1

Instrument :
 ECD_R
 ClientSampleId :

Integration File signal 1: autoint1.e
 Integration File signal 2: autoint2.e
 Quant Time: Oct 21 09:18:56 2020
 Quant Method : Z:\pestpcbsrv\HPCHEM1\ECD_R\Method\PR102120CLP.M
 Quant Title : GC EXTRACTABLES
 QLast Update : Wed Oct 21 09:18:34 2020
 Response via : Initial Calibration
 Integrator: ChemStation

Volume Inj. : 1 µl
 Signal #1 Phase : ZB MR1 Signal #2 Phase: ZB MR2
 Signal #1 Info : 30Mx0.32mmx 0.5µm Signal #2 Info : 30M x 0.32mm x 0.25µm

Compound	RT#1	RT#2	Resp#1	Resp#2	ng/ml	ng/ml

System Monitoring Compounds						
1) SA Tetrachlo...	4.732	3.883	9538774	14708584	4.764	5.047
2) SA Decachlor...	10.666	8.978	25135621	132.6E6	11.801	10.867
Target Compounds						
11) L3 AR-1232-1	5.107	4.259	4925202	6662881	103.620	111.562
12) L3 AR-1232-2	5.642	4.995	2535122	7198054	101.845	103.665
13) L3 AR-1232-3	5.934	5.173	5068097	3373888	99.077	87.455
14) L3 AR-1232-4	6.097	5.256	2674272	3281103	103.828	127.498
15) L3 AR-1232-5	6.184	5.429	2092114	4627521	101.983	132.890 #

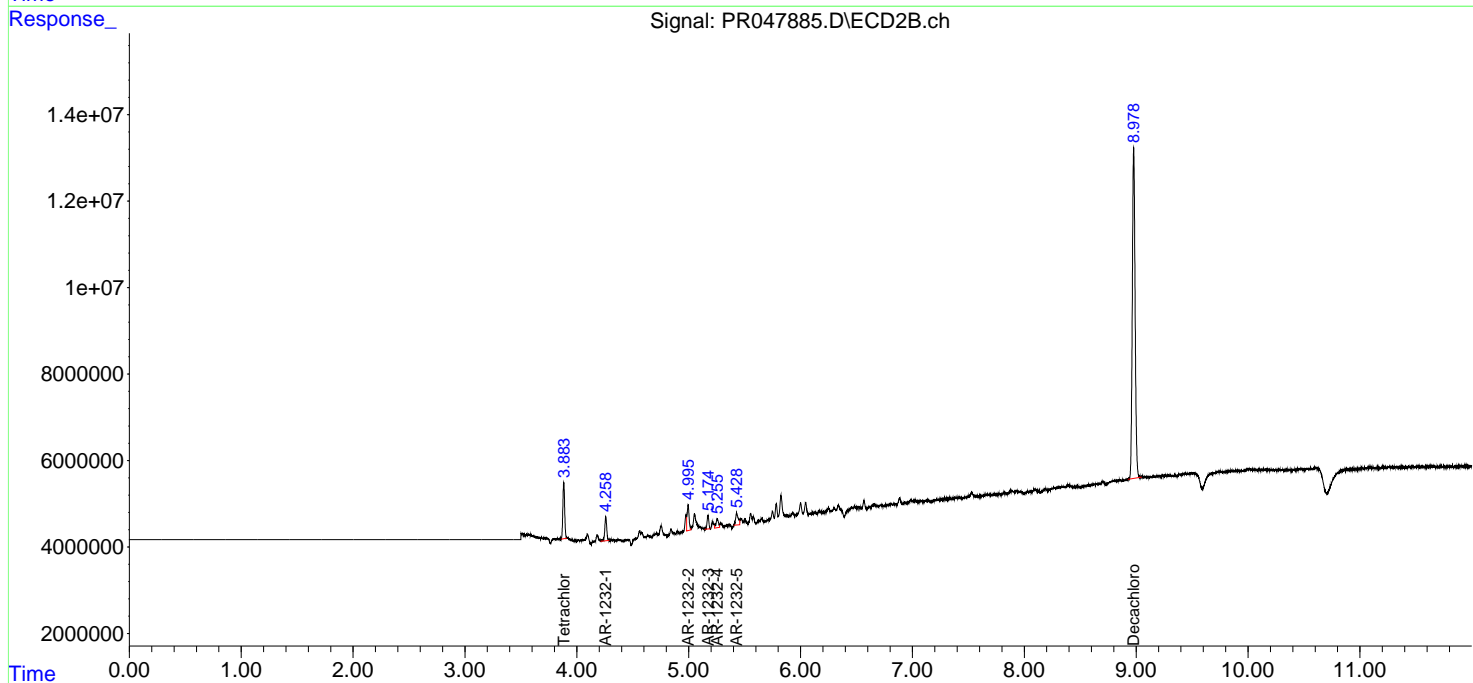
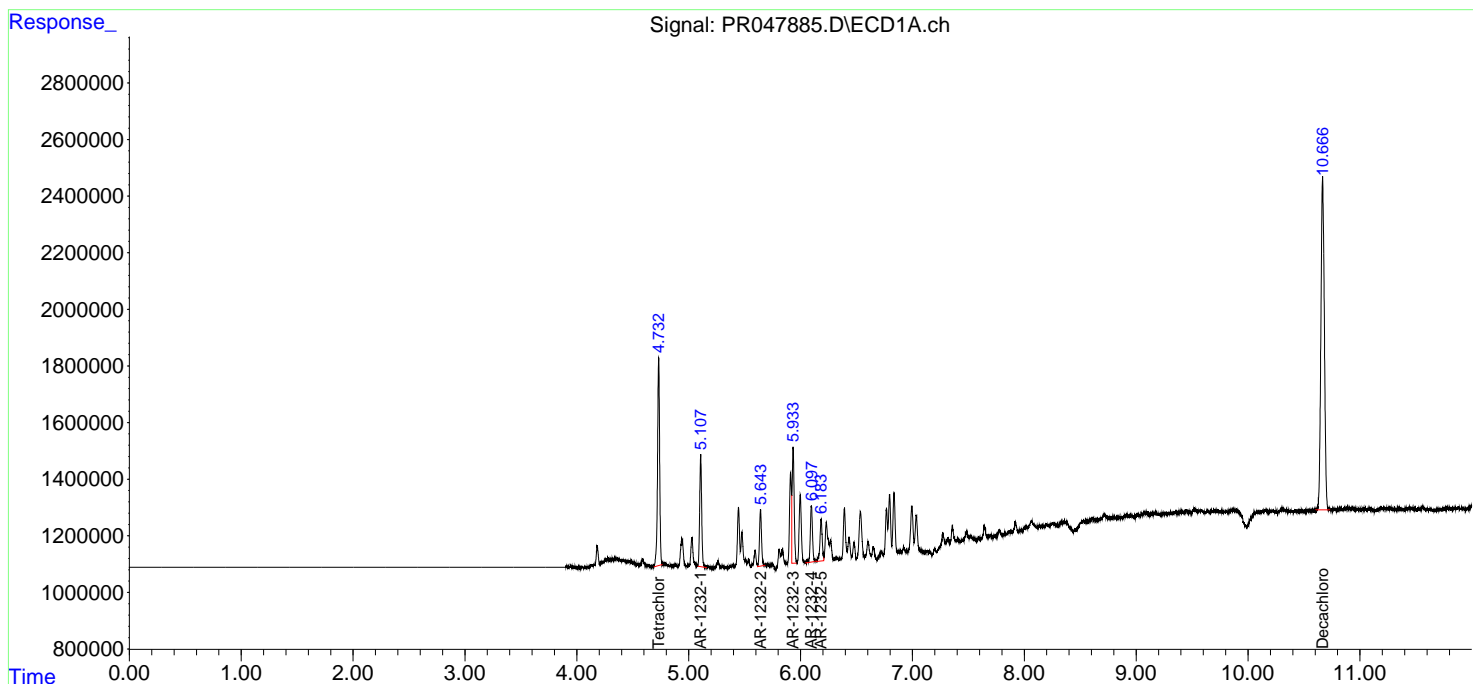
(f)=RT Delta > 1/2 Window (#)=Amounts differ by > 25% (m)=manual int.

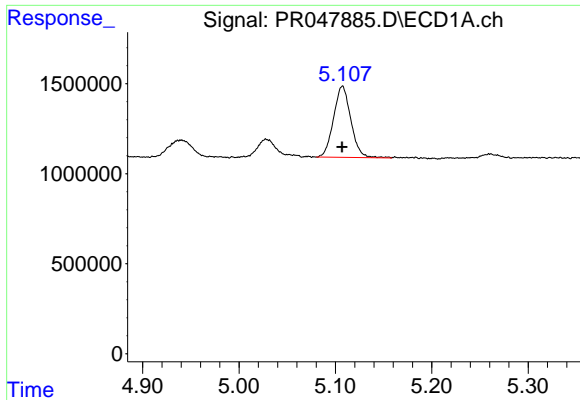
Data Path : Z:\pestpcbsrv\HPCHEM1\ECD_R\Data\PR102120\
 Data File : PR047885.D
 Signal(s) : Signal #1: ECD1A.ch Signal #2: ECD2B.ch
 Acq On : 20 Oct 2020 21:38
 Operator : AJ\MA
 Sample : AR1232ICC100
 Misc :
 ALS Vial : 13 Sample Multiplier: 1

Instrument :
 ECD_R
 ClientSampled :

Integration File signal 1: autoint1.e
 Integration File signal 2: autoint2.e
 Quant Time: Oct 21 09:18:56 2020
 Quant Method : Z:\pestpcbsrv\HPCHEM1\ECD_R\Method\PR102120CLP.M
 Quant Title : GC EXTRACTABLES
 QLast Update : Wed Oct 21 09:18:34 2020
 Response via : Initial Calibration
 Integrator: ChemStation

Volume Inj. : 1 µl
 Signal #1 Phase : ZB MR1 Signal #2 Phase: ZB MR2
 Signal #1 Info : 30Mx0.32mmx 0.5µm Signal #2 Info : 30M x 0.32mm x 0.25µm

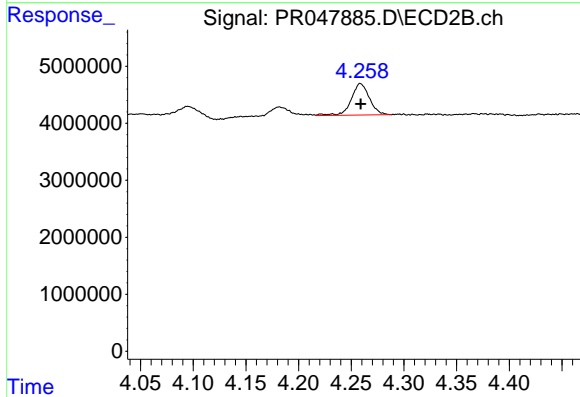




#11 AR-1232-1

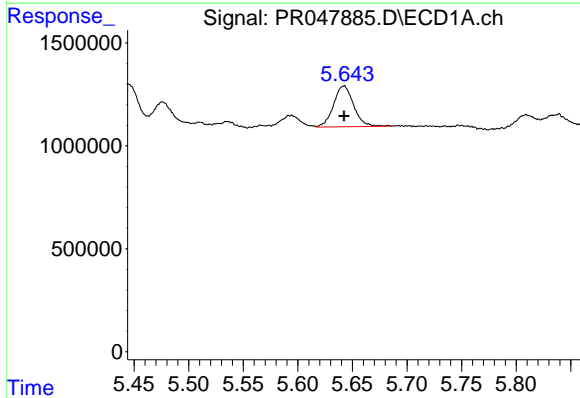
R.T.: 5.107 min
 Delta R.T.: 0.000 min
 Response: 4925202
 Conc: 103.62 ng/ml

Instrument :
 ECD_R
 ClientSampleId :



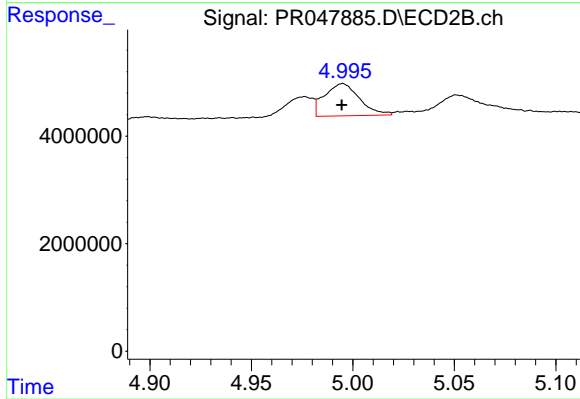
#11 AR-1232-1

R.T.: 4.259 min
 Delta R.T.: 0.000 min
 Response: 6662881
 Conc: 111.56 ng/ml



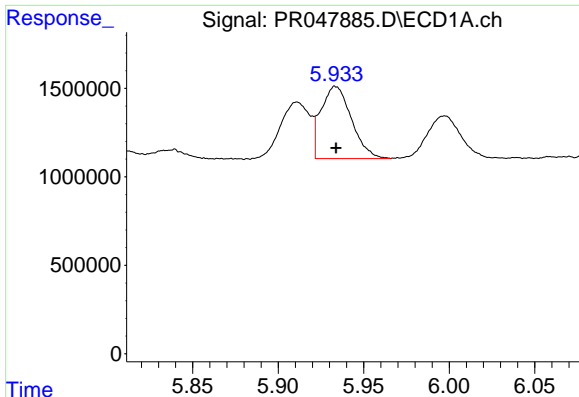
#12 AR-1232-2

R.T.: 5.642 min
 Delta R.T.: 0.000 min
 Response: 2535122
 Conc: 101.85 ng/ml



#12 AR-1232-2

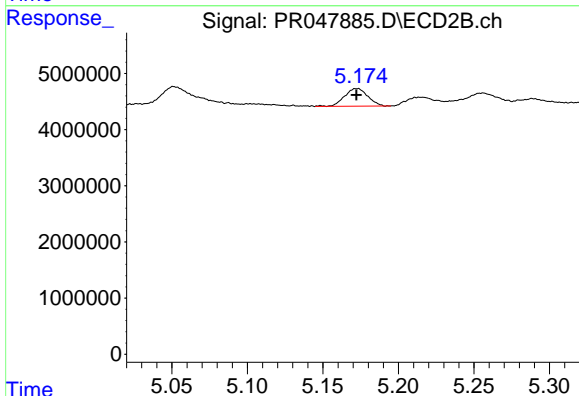
R.T.: 4.995 min
 Delta R.T.: 0.000 min
 Response: 7198054
 Conc: 103.66 ng/ml



#13 AR-1232-3

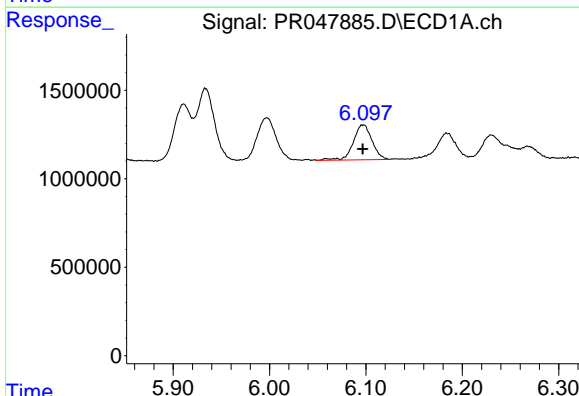
R.T.: 5.934 min
 Delta R.T.: 0.000 min
 Response: 5068097
 Conc: 99.08 ng/ml

Instrument :
 ECD_R
 ClientSampleId :



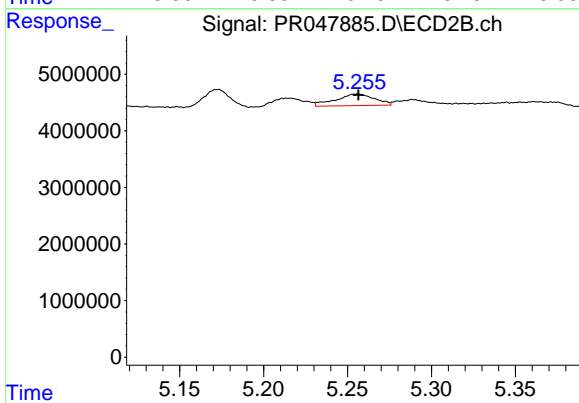
#13 AR-1232-3

R.T.: 5.173 min
 Delta R.T.: 0.000 min
 Response: 3373888
 Conc: 87.46 ng/ml



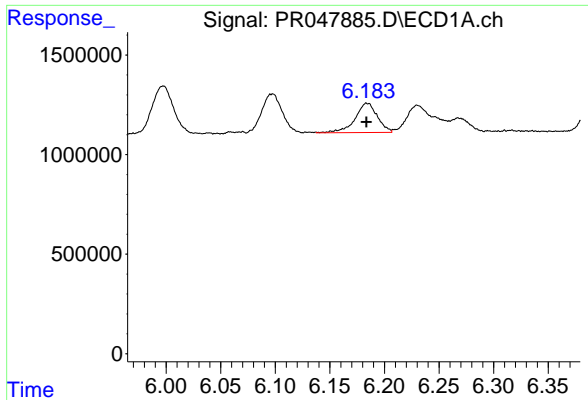
#14 AR-1232-4

R.T.: 6.097 min
 Delta R.T.: 0.000 min
 Response: 2674272
 Conc: 103.83 ng/ml



#14 AR-1232-4

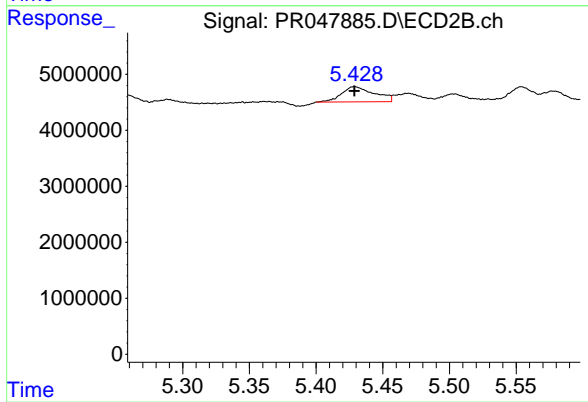
R.T.: 5.256 min
 Delta R.T.: 0.000 min
 Response: 3281103
 Conc: 127.50 ng/ml



#15 AR-1232-5

R.T.: 6.184 min
Delta R.T.: 0.000 min
Response: 2092114
Conc: 101.98 ng/ml

Instrument :
ECD_R
ClientSampleId :



#15 AR-1232-5

R.T.: 5.429 min
Delta R.T.: 0.000 min
Response: 4627521
Conc: 132.89 ng/ml