

Data Path : Z:\pestpcbsrv\HPCHEM1\ECD\_R\Data\PR102120\  
 Data File : PR047886.D  
 Signal(s) : Signal #1: ECD1A.ch Signal #2: ECD2B.ch  
 Acq On : 20 Oct 2020 21:53  
 Operator : AJ\MA  
 Sample : AR1232ICC200  
 Misc :  
 ALS Vial : 14 Sample Multiplier: 1

Instrument :  
 ECD\_R  
 ClientSampleId :

Integration File signal 1: autoint1.e  
 Integration File signal 2: autoint2.e  
 Quant Time: Oct 21 09:19:21 2020  
 Quant Method : Z:\pestpcbsrv\HPCHEM1\ECD\_R\Method\PR102120CLP.M  
 Quant Title : GC EXTRACTABLES  
 QLast Update : Wed Oct 21 09:18:34 2020  
 Response via : Initial Calibration  
 Integrator: ChemStation

Volume Inj. : 1 µl  
 Signal #1 Phase : ZB MR1 Signal #2 Phase: ZB MR2  
 Signal #1 Info : 30Mx0.32mmx 0.5µm Signal #2 Info : 30M x 0.32mm x 0.25µm

Compound	RT#1	RT#2	Resp#1	Resp#2	ng/ml	ng/ml
-----						
System Monitoring Compounds						
1) SA Tetrachlo...	4.732	3.884	19585930	32191611	9.782	11.046
2) SA Decachlor...	10.667	8.977	47939802	262.8E6	22.508	21.541
Target Compounds						
11) L3 AR-1232-1	5.107	4.259	9754782	12843849	205.229	215.056
12) L3 AR-1232-2	5.642	4.995	5034009	14282808	202.235	205.698
13) L3 AR-1232-3	5.934	5.172	10612764	7198763	207.470	186.600
14) L3 AR-1232-4	6.097	5.256	5201104	5618485	201.932	218.324
15) L3 AR-1232-5	6.184	5.429	4138468	7241213	201.736	207.948
-----						

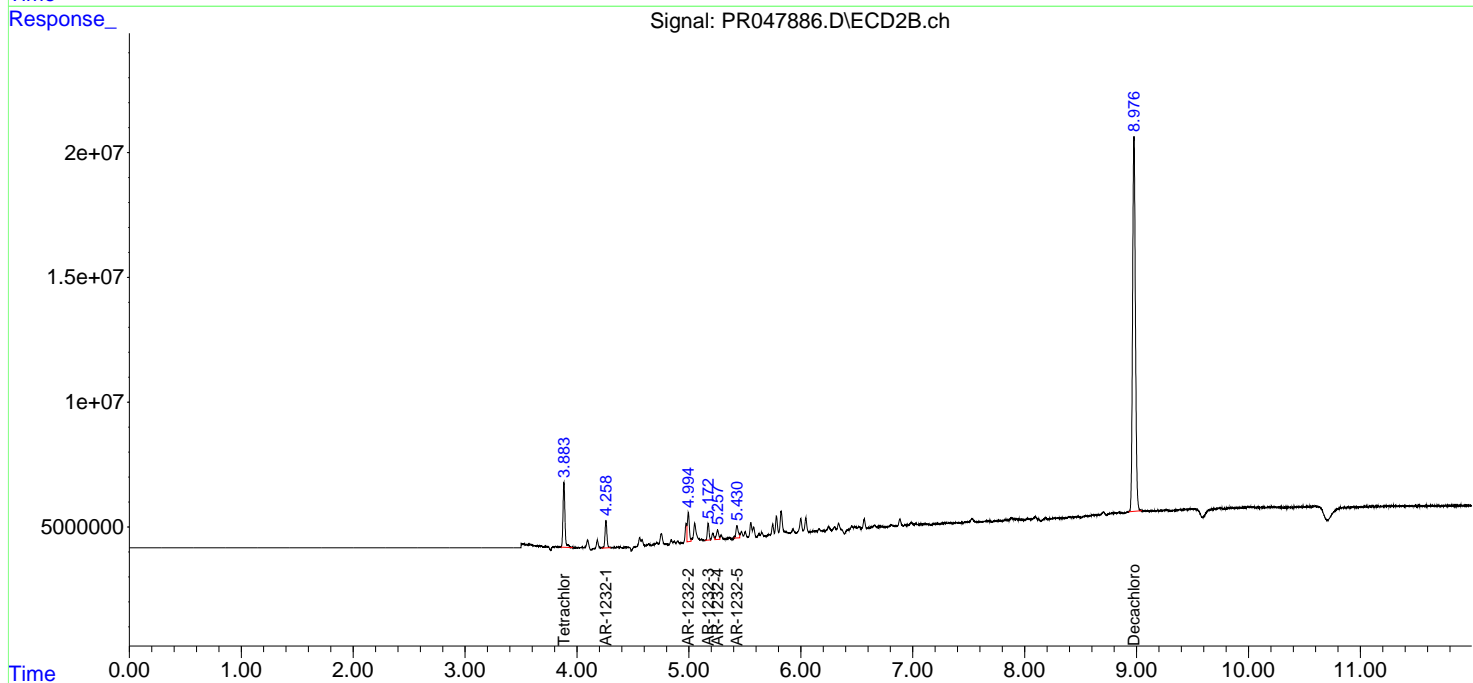
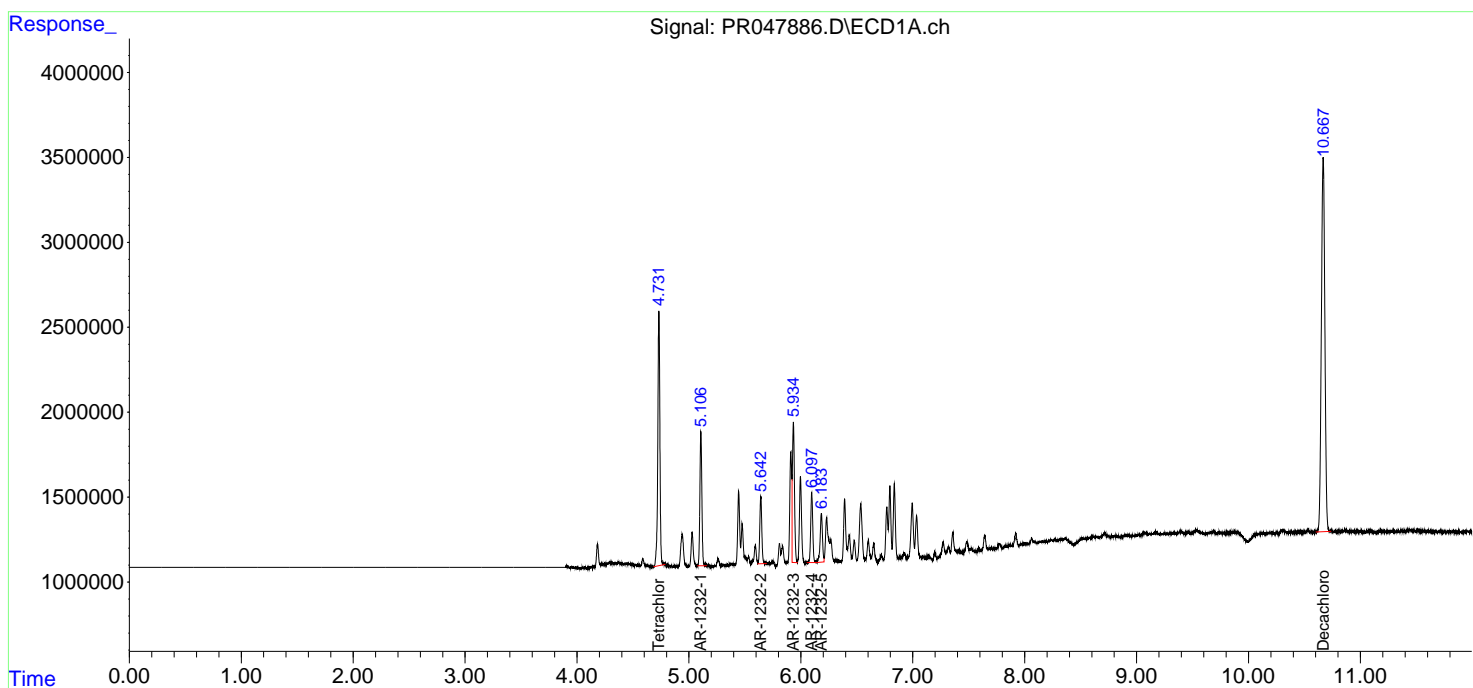
(f)=RT Delta > 1/2 Window (#)=Amounts differ by > 25% (m)=manual int.

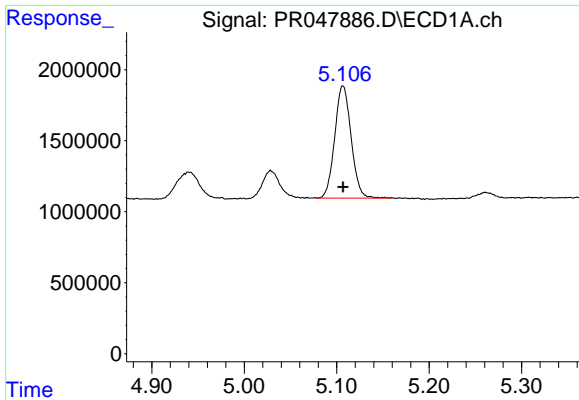
Data Path : Z:\pestpcbsrv\HPCHEM1\ECD\_R\Data\PR102120\  
 Data File : PR047886.D  
 Signal(s) : Signal #1: ECD1A.ch Signal #2: ECD2B.ch  
 Acq On : 20 Oct 2020 21:53  
 Operator : AJ\MA  
 Sample : AR1232ICC200  
 Misc :  
 ALS Vial : 14 Sample Multiplier: 1

Instrument :  
 ECD\_R  
 ClientSampled :

Integration File signal 1: autoint1.e  
 Integration File signal 2: autoint2.e  
 Quant Time: Oct 21 09:19:21 2020  
 Quant Method : Z:\pestpcbsrv\HPCHEM1\ECD\_R\Method\PR102120CLP.M  
 Quant Title : GC EXTRACTABLES  
 QLast Update : Wed Oct 21 09:18:34 2020  
 Response via : Initial Calibration  
 Integrator: ChemStation

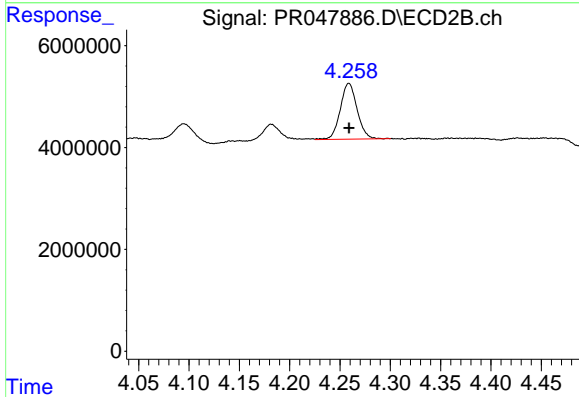
Volume Inj. : 1 µl  
 Signal #1 Phase : ZB MR1 Signal #2 Phase: ZB MR2  
 Signal #1 Info : 30Mx0.32mmx 0.5µm Signal #2 Info : 30M x 0.32mm x 0.25µm



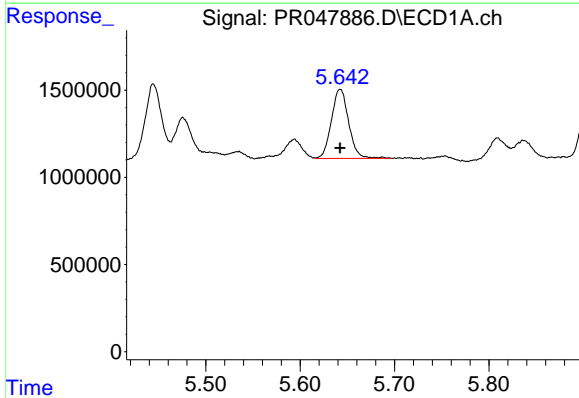


#11 AR-1232-1  
R.T.: 5.107 min  
Delta R.T.: 0.000 min  
Response: 9754782  
Conc: 205.23 ng/ml

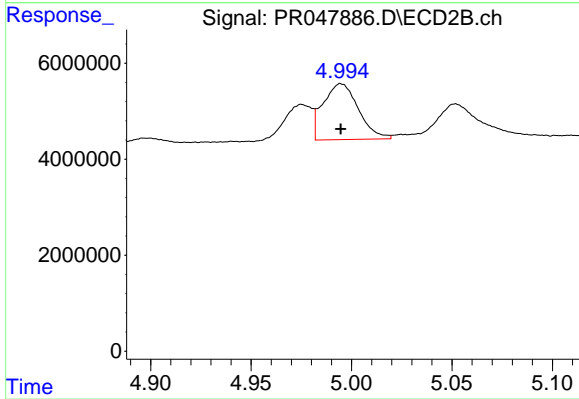
Instrument :  
ECD\_R  
ClientSampleId :



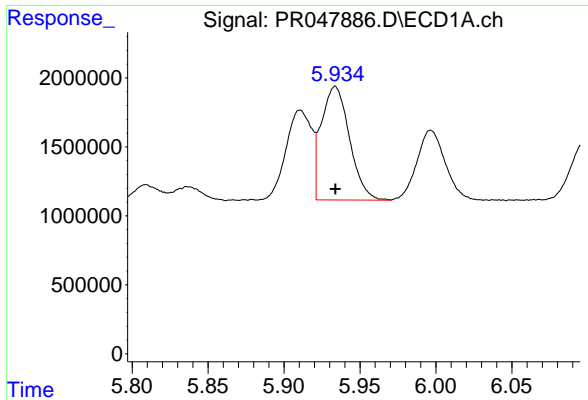
#11 AR-1232-1  
R.T.: 4.259 min  
Delta R.T.: 0.000 min  
Response: 12843849  
Conc: 215.06 ng/ml



#12 AR-1232-2  
R.T.: 5.642 min  
Delta R.T.: 0.000 min  
Response: 5034009  
Conc: 202.24 ng/ml

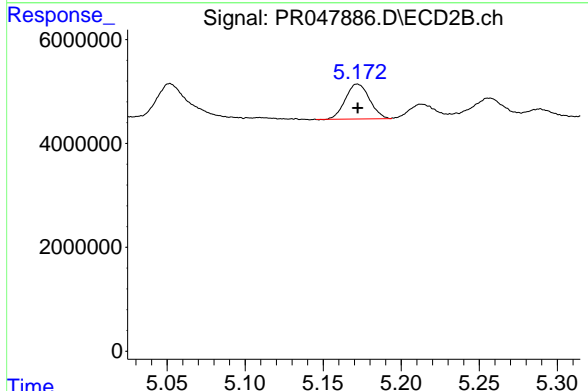


#12 AR-1232-2  
R.T.: 4.995 min  
Delta R.T.: 0.000 min  
Response: 14282808  
Conc: 205.70 ng/ml

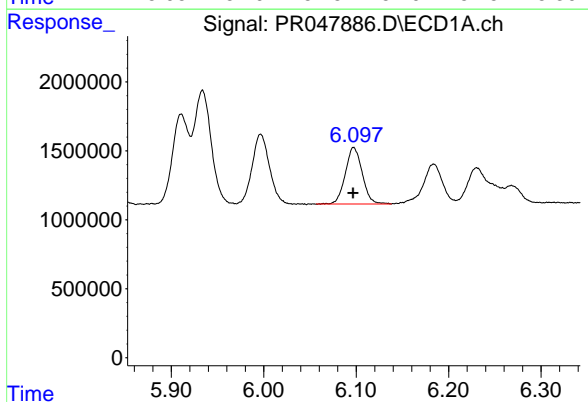


#13 AR-1232-3  
 R.T.: 5.934 min  
 Delta R.T.: 0.000 min  
 Response: 10612764  
 Conc: 207.47 ng/ml

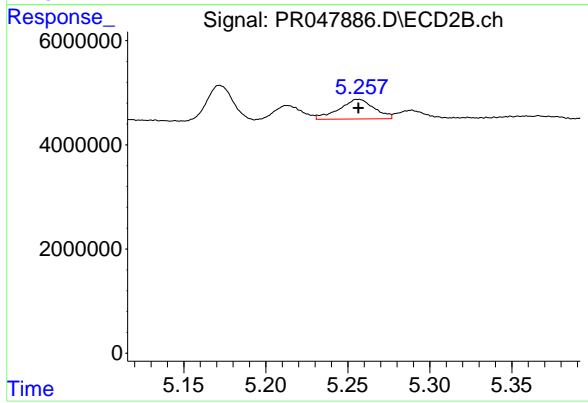
Instrument :  
 ECD\_R  
 ClientSampleId :



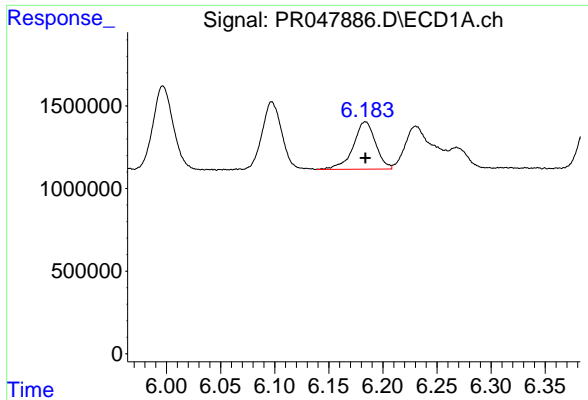
#13 AR-1232-3  
 R.T.: 5.172 min  
 Delta R.T.: 0.000 min  
 Response: 7198763  
 Conc: 186.60 ng/ml



#14 AR-1232-4  
 R.T.: 6.097 min  
 Delta R.T.: 0.000 min  
 Response: 5201104  
 Conc: 201.93 ng/ml



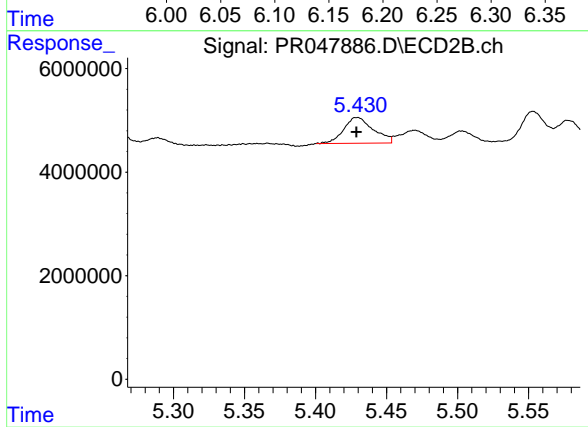
#14 AR-1232-4  
 R.T.: 5.256 min  
 Delta R.T.: 0.000 min  
 Response: 5618485  
 Conc: 218.32 ng/ml



#15 AR-1232-5

R.T.: 6.184 min  
Delta R.T.: 0.000 min  
Response: 4138468  
Conc: 201.74 ng/ml

Instrument :  
ECD\_R  
ClientSampleId :



#15 AR-1232-5

R.T.: 5.429 min  
Delta R.T.: 0.000 min  
Response: 7241213  
Conc: 207.95 ng/ml