

Data Path : Z:\pestpcbsrv\HPCHEM1\ECD\_R\Data\PR102423\  
 Data File : PR064233.D  
 Signal(s) : Signal #1: ECD1A.ch Signal #2: ECD2B.ch  
 Acq On : 24 Oct 2023 17:50  
 Operator : AJ\MA  
 Sample : 04948-01  
 Misc :  
 ALS Vial : 54 Sample Multiplier: 1

Instrument :  
 ECD\_R  
 ClientSampleId :

Integration File signal 1: autoint1.e  
 Integration File signal 2: autoint2.e  
 Quant Time: Oct 25 01:42:18 2023  
 Quant Method : Z:\pestpcbsrv\HPCHEM1\ECD\_R\Method\PR101223CLP.M  
 Quant Title : GC EXTRACTABLES  
 QLast Update : Fri Oct 13 05:04:13 2023  
 Response via : Initial Calibration  
 Integrator: ChemStation

Volume Inj. : 1 µl  
 Signal #1 Phase : ZB MR1 Signal #2 Phase: ZB MR2  
 Signal #1 Info : 30Mx0.32mmx 0.5µm Signal #2 Info : 30M x 0.32mm x 0.25µm

| Compound                    | RT#1   | RT#2  | Resp#1   | Resp#2   | ng/ml  | ng/ml    |
|-----------------------------|--------|-------|----------|----------|--------|----------|
| -----                       |        |       |          |          |        |          |
| System Monitoring Compounds |        |       |          |          |        |          |
| 1) SA Tetrachlo...          | 3.735  | 3.022 | 141.9E6  | 77377542 | 19.813 | 18.747   |
| 2) SA Decachlor...          | 9.754  | 8.414 | 112.2E6  | 68104611 | 24.014 | 22.437   |
| Target Compounds            |        |       |          |          |        |          |
| 3) L1 AR-1016-1             | 5.008  | 4.176 | 6831741  | 920628   | 31.759 | 6.333 #  |
| 4) L1 AR-1016-2             | 5.008  | 4.201 | 6831741  | 663023   | 20.850 | 3.317 #  |
| 5) L1 AR-1016-3             | 5.056  | 4.385 | 1436829  | 1055905  | 6.946  | 9.578 #  |
| 6) L1 AR-1016-4             | 5.167  | 4.420 | 5673287  | 1142743  | 34.830 | 13.205 # |
| 7) L1 AR-1016-5             | 5.543f | 4.665 | 1358940  | 179578   | 8.360  | 1.572 #  |
| 8) L2 AR-1221-1             | 3.947  | 3.238 | 935817   | 171039   | 11.455 | 3.159 #  |
| 9) L2 AR-1221-2             | 4.053  | 3.333 | 1892265  | 1853210  | 34.809 | 47.856 # |
| 10) L2 AR-1221-3            | 4.150  | 3.420 | 614201   | 1087845  | 3.422  | 8.674 #  |
| 11) L3 AR-1232-1            | 4.150  | 3.420 | 614201   | 1087845  | 4.131  | 10.389 # |
| 12) L3 AR-1232-2            | 4.686  | 4.201 | 7051779  | 663023   | 86.514 | 7.104 #  |
| 13) L3 AR-1232-3            | 5.008  | 4.385 | 6831741  | 1055905  | 45.641 | 20.864 # |
| 14) L3 AR-1232-4            | 5.167  | 4.467 | 5673287  | 733767   | 77.770 | 16.069 # |
| 15) L3 AR-1232-5            | 5.258  | 4.665 | 2721186  | 179578   | 49.779 | 3.562 #  |
| 16) L4 AR-1242-1            | 5.008  | 4.176 | 6831741  | 920628   | 37.831 | 7.489 #  |
| 17) L4 AR-1242-2            | 5.008  | 4.201 | 6831741  | 663023   | 24.896 | 3.941 #  |
| 18) L4 AR-1242-3            | 5.056  | 4.385 | 1436829  | 1055905  | 8.171  | 11.351 # |
| 19) L4 AR-1242-4            | 5.167  | 4.467 | 5673287  | 733767   | 41.504 | 8.073 #  |
| 20) L4 AR-1242-5            | 5.969  | 5.026 | 8981654  | 5923851  | 60.662 | 53.442   |
| 21) L5 AR-1248-1            | 5.008  | 4.176 | 6831741  | 920628   | 49.530 | 9.759 #  |
| 22) L5 AR-1248-2            | 5.258  | 4.420 | 2721186  | 1142743  | 13.896 | 8.777 #  |
| 23) L5 AR-1248-3            | 5.543f | 4.467 | 1358940  | 733767   | 5.902  | 5.443    |
| 24) L5 AR-1248-4            | 5.969f | 4.665 | 8981654  | 179578   | 36.279 | 1.116 #  |
| 25) L5 AR-1248-5            | 5.969  | 5.074 | 8981654  | 2314391  | 35.840 | 15.306 # |
| 26) L6 AR-1254-1            | 5.857f | 5.026 | 3187927  | 5923851  | 12.715 | 25.686 # |
| 27) L6 AR-1254-2            | 6.130  | 5.190 | 11959254 | 3733065  | 31.440 | 18.853 # |
| 28) L6 AR-1254-3            | 6.517  | 5.616 | 10626351 | 6082716  | 27.273 | 19.430 # |
| 29) L6 AR-1254-4            | 6.883f | 5.855 | 349958   | 5548416  | 1.308  | 29.527 # |
| 30) L6 AR-1254-5            | 7.301  | 6.329 | 2202274  | 2284238  | 7.490  | 8.372    |
| 31) L7 AR-1260-1            | 6.707  | 5.798 | 1577386  | 5411096  | 5.307  | 24.100 # |
| 32) L7 AR-1260-2            | 6.987  | 5.976 | 2292871  | 3476989  | 6.630  | 13.185 # |
| 33) L7 AR-1260-3            | 7.358f | 6.134 | 5473851  | 1307149  | 21.305 | 5.169 #  |
| 34) L7 AR-1260-4            | 7.655  | 6.656 | 5181409  | 743255   | 18.333 | 3.767 #  |
| 35) L7 AR-1260-5            | 7.970  | 6.942 | 4101609  | 1099414  | 7.597  | 2.589 #  |
| 36) L8 AR-1262-1            | 7.358  | 6.372 | 5473851  | 436107   | 14.539 | 1.498 #  |
| 37) L8 AR-1262-2            | 7.970  | 6.918 | 4101609  | 934940   | 6.663  | 2.003 #  |
| 38) L8 AR-1262-3            | 8.303  | 7.236 | 26687541 | 2016246  | 63.688 | 11.042 # |
| 39) L8 AR-1262-4            | 8.379  | 7.301 | 178720   | 4604280  | 0.555  | 13.669 # |
| 40) L8 AR-1262-5            | 9.039  | 7.865 | 406160   | 211574   | 1.848  | 1.448    |
| 41) L9 AR-1268-1            | 8.303  | 7.236 | 26687541 | 2016246  | 36.383 | 3.876 #  |

Data Path : Z:\pestpcbsrv\HPCHEM1\ECD\_R\Data\PR102423\  
 Data File : PR064233.D  
 Signal(s) : Signal #1: ECD1A.ch Signal #2: ECD2B.ch  
 Acq On : 24 Oct 2023 17:50  
 Operator : AJ\MA  
 Sample : 04948-01  
 Misc :  
 ALS Vial : 54 Sample Multiplier: 1

Instrument :  
 ECD\_R  
 ClientSampleId :

Integration File signal 1: autoint1.e  
 Integration File signal 2: autoint2.e  
 Quant Time: Oct 25 01:42:18 2023  
 Quant Method : Z:\pestpcbsrv\HPCHEM1\ECD\_R\Method\PR101223CLP.M  
 Quant Title : GC EXTRACTABLES  
 QLast Update : Fri Oct 13 05:04:13 2023  
 Response via : Initial Calibration  
 Integrator: ChemStation

Volume Inj. : 1 µl  
 Signal #1 Phase : ZB MR1 Signal #2 Phase: ZB MR2  
 Signal #1 Info : 30Mx0.32mmx 0.5µm Signal #2 Info : 30M x 0.32mm x 0.25µm

|     | Compound     | RT#1  | RT#2  | Resp#1  | Resp#2  | ng/ml | ng/ml   |
|-----|--------------|-------|-------|---------|---------|-------|---------|
| 42) | L9 AR-1268-2 | 8.379 | 7.301 | 178720  | 4604280 | 0.269 | 9.753 # |
| 43) | L9 AR-1268-3 | 8.606 | 7.530 | 643933  | 942850  | 1.118 | 2.360 # |
| 44) | L9 AR-1268-4 | 9.039 | 7.865 | 406160  | 211574  | 1.737 | 1.300 # |
| 45) | L9 AR-1268-5 | 9.429 | 8.153 | 1221218 | 757946  | 0.686 | 0.648   |

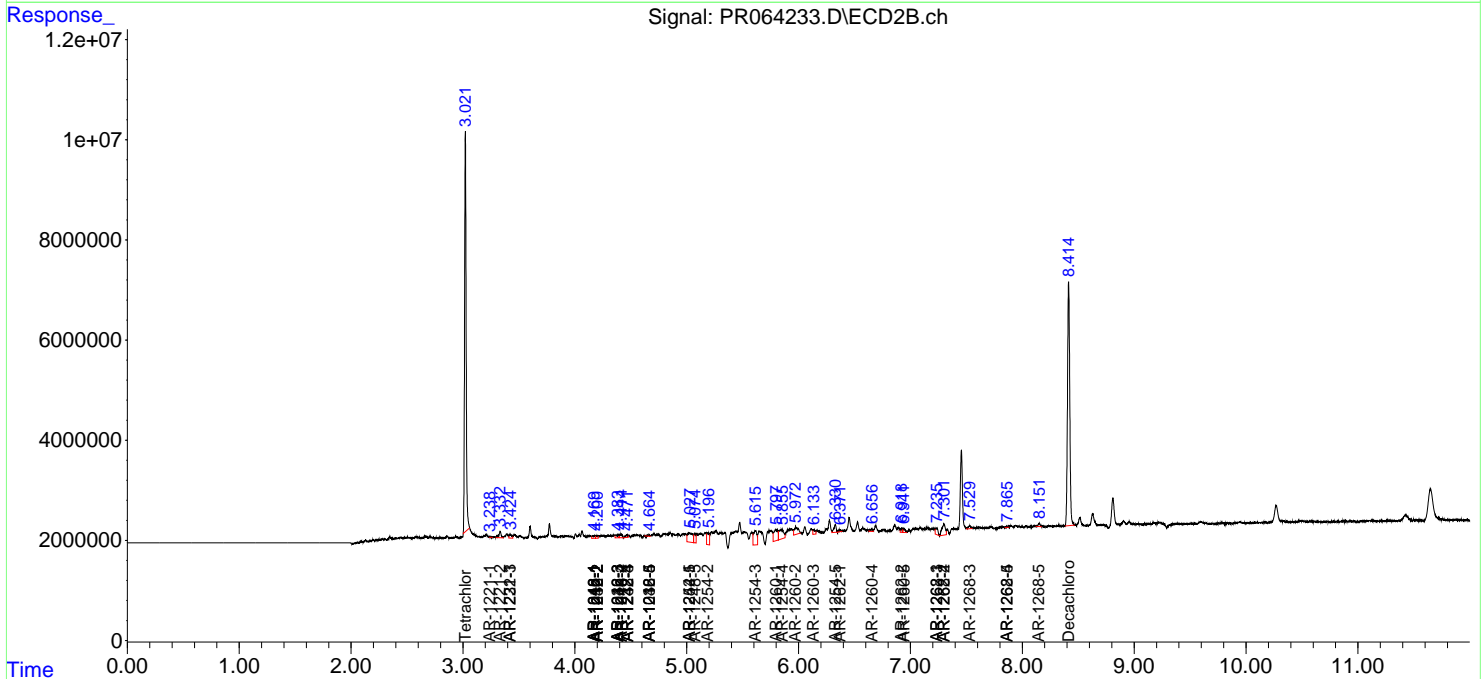
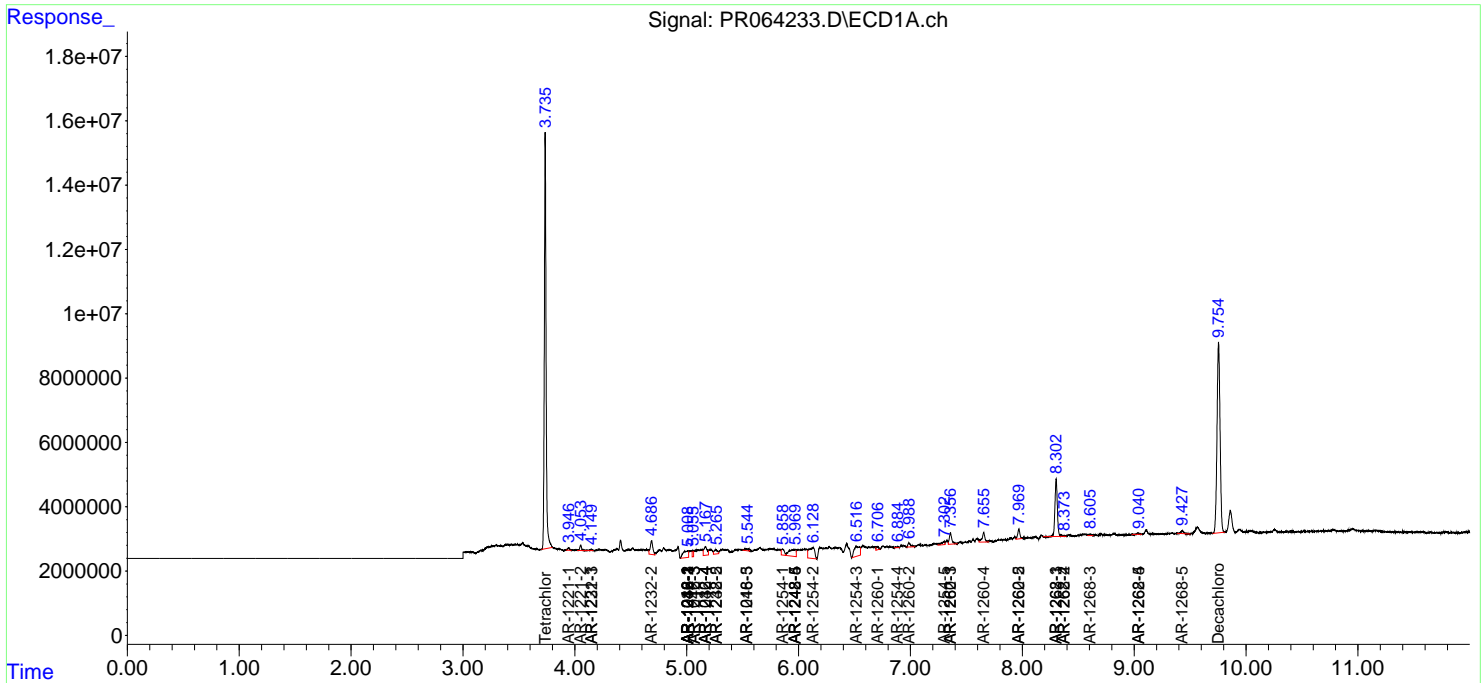
(f)=RT Delta > 1/2 Window (#)=Amounts differ by > 25% (m)=manual int.

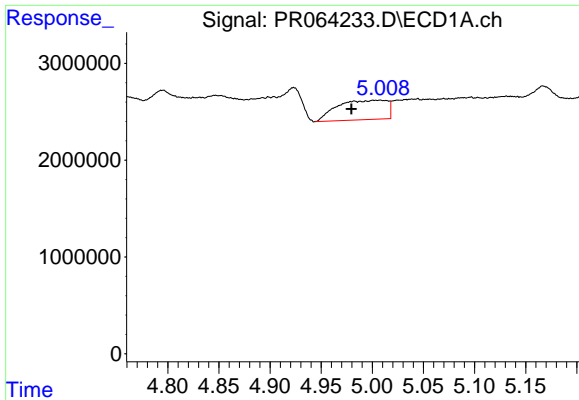
Data Path : Z:\pestpcbsrv\HPCHEM1\ECD\_R\Data\PR102423\  
 Data File : PR064233.D  
 Signal(s) : Signal #1: ECD1A.ch Signal #2: ECD2B.ch  
 Acq On : 24 Oct 2023 17:50  
 Operator : AJ\MA  
 Sample : 04948-01  
 Misc :  
 ALS Vial : 54 Sample Multiplier: 1

Instrument :  
 ECD\_R  
 ClientSampleId :

Integration File signal 1: autoint1.e  
 Integration File signal 2: autoint2.e  
 Quant Time: Oct 25 01:42:18 2023  
 Quant Method : Z:\pestpcbsrv\HPCHEM1\ECD\_R\Method\PR101223CLP.M  
 Quant Title : GC EXTRACTABLES  
 QLast Update : Fri Oct 13 05:04:13 2023  
 Response via : Initial Calibration  
 Integrator: ChemStation

Volume Inj. : 1 µl  
 Signal #1 Phase : ZB MR1 Signal #2 Phase: ZB MR2  
 Signal #1 Info : 30Mx0.32mmx 0.5µm Signal #2 Info : 30M x 0.32mm x 0.25µm

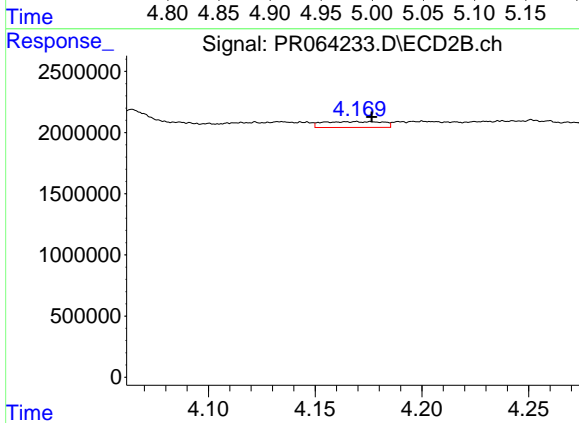




#3 AR-1016-1

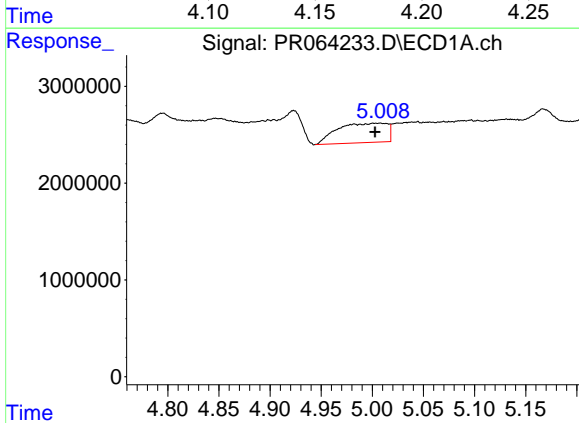
R.T.: 5.008 min  
 Delta R.T.: 0.028 min  
 Response: 6831741  
 Conc: 31.76 ng/ml

Instrument :  
 ECD\_R  
 ClientSampleId :



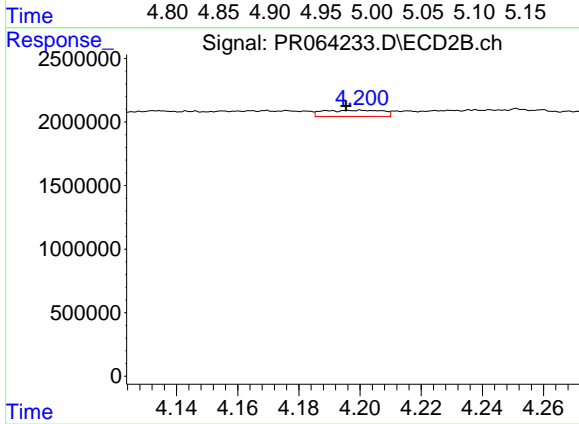
#3 AR-1016-1

R.T.: 4.176 min  
 Delta R.T.: 0.000 min  
 Response: 920628  
 Conc: 6.33 ng/ml



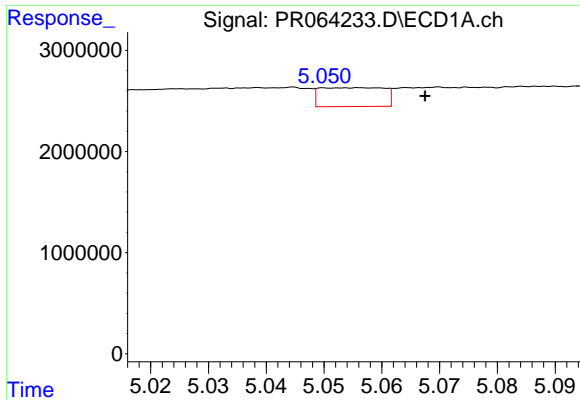
#4 AR-1016-2

R.T.: 5.008 min  
 Delta R.T.: 0.005 min  
 Response: 6831741  
 Conc: 20.85 ng/ml



#4 AR-1016-2

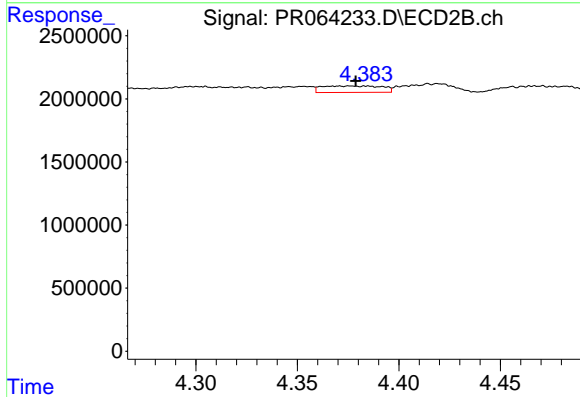
R.T.: 4.201 min  
 Delta R.T.: 0.005 min  
 Response: 663023  
 Conc: 3.32 ng/ml



#5 AR-1016-3

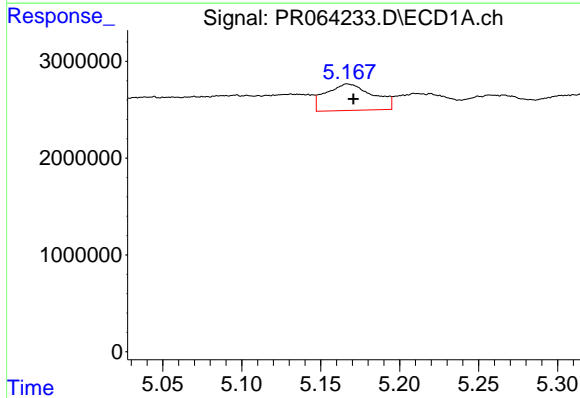
R.T.: 5.056 min  
 Delta R.T.: -0.011 min  
 Response: 1436829  
 Conc: 6.95 ng/ml

Instrument :  
 ECD\_R  
 ClientSampleId :



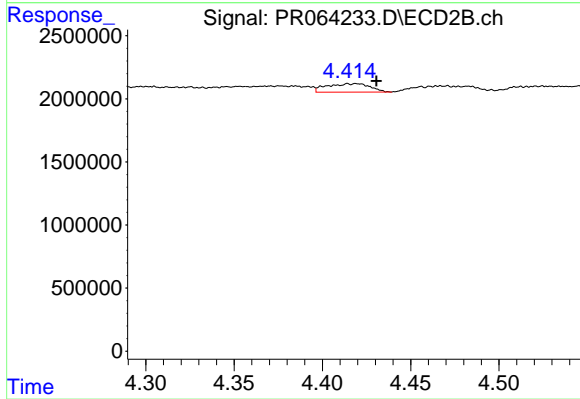
#5 AR-1016-3

R.T.: 4.385 min  
 Delta R.T.: 0.006 min  
 Response: 1055905  
 Conc: 9.58 ng/ml



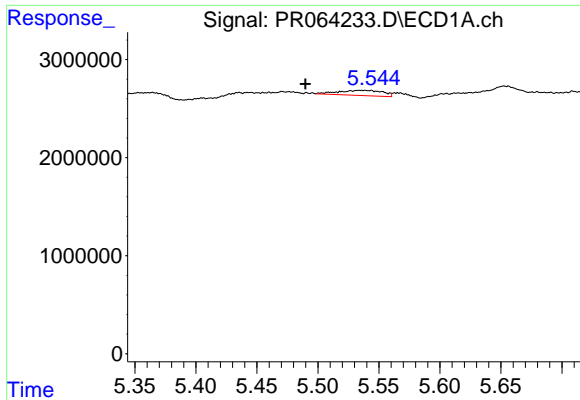
#6 AR-1016-4

R.T.: 5.167 min  
 Delta R.T.: -0.004 min  
 Response: 5673287  
 Conc: 34.83 ng/ml



#6 AR-1016-4

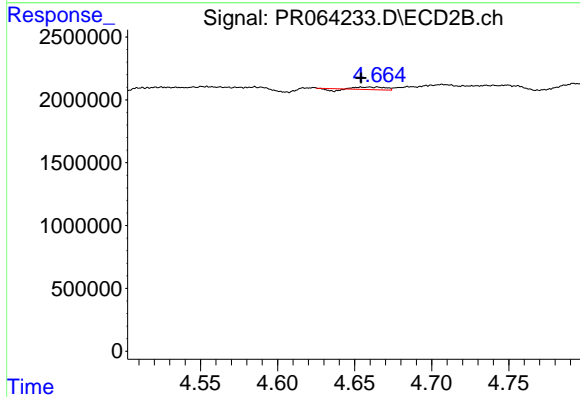
R.T.: 4.420 min  
 Delta R.T.: -0.011 min  
 Response: 1142743  
 Conc: 13.21 ng/ml



#7 AR-1016-5

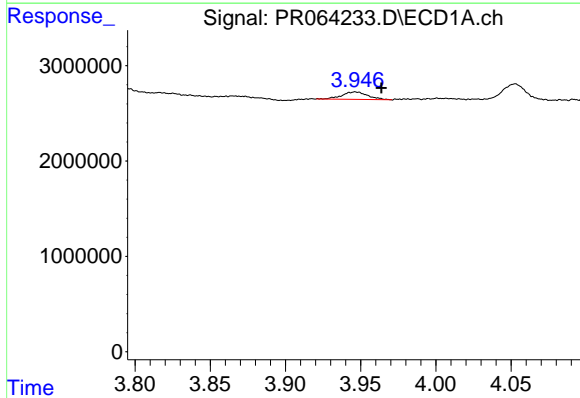
R.T.: 5.543 min  
 Delta R.T.: 0.053 min  
 Response: 1358940  
 Conc: 8.36 ng/ml

Instrument :  
 ECD\_R  
 ClientSampleId :



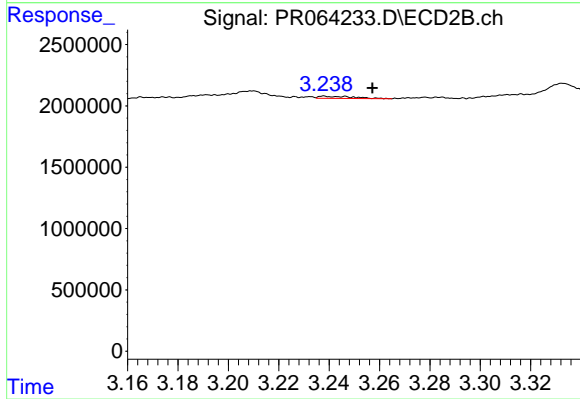
#7 AR-1016-5

R.T.: 4.665 min  
 Delta R.T.: 0.011 min  
 Response: 179578  
 Conc: 1.57 ng/ml



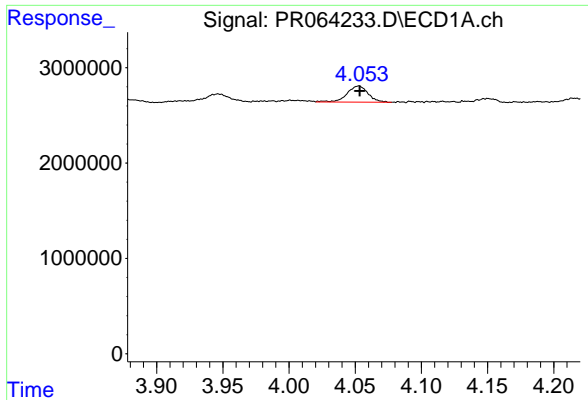
#8 AR-1221-1

R.T.: 3.947 min  
 Delta R.T.: -0.017 min  
 Response: 935817  
 Conc: 11.46 ng/ml



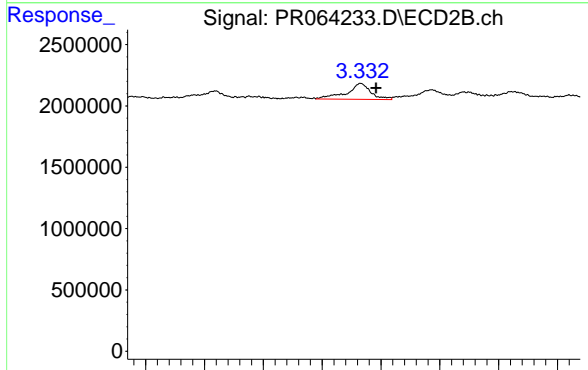
#8 AR-1221-1

R.T.: 3.238 min  
 Delta R.T.: -0.019 min  
 Response: 171039  
 Conc: 3.16 ng/ml

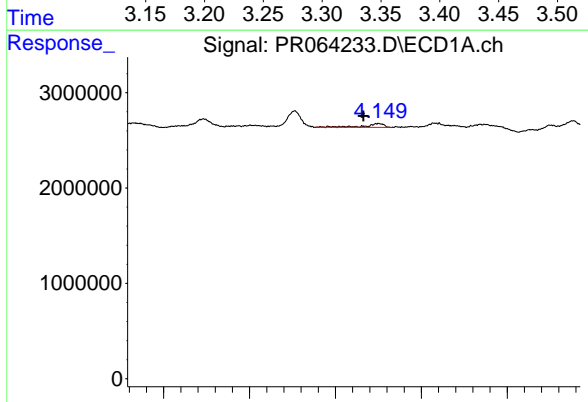


#9 AR-1221-2  
 R.T.: 4.053 min  
 Delta R.T.: 0.000 min  
 Response: 1892265  
 Conc: 34.81 ng/ml

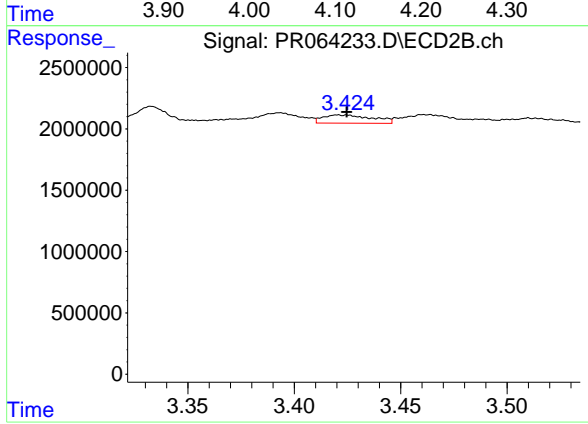
Instrument :  
 ECD\_R  
 ClientSampleId :



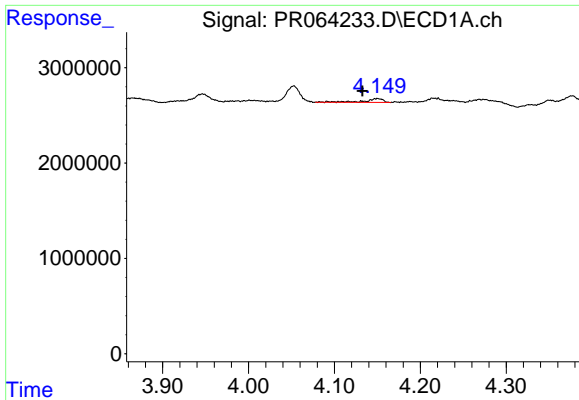
#9 AR-1221-2  
 R.T.: 3.333 min  
 Delta R.T.: -0.013 min  
 Response: 1853210  
 Conc: 47.86 ng/ml



#10 AR-1221-3  
 R.T.: 4.150 min  
 Delta R.T.: 0.018 min  
 Response: 614201  
 Conc: 3.42 ng/ml



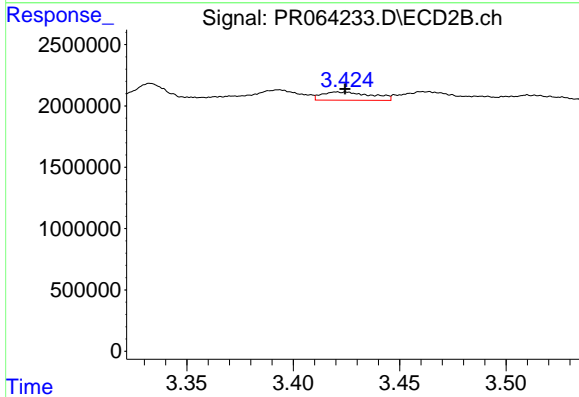
#10 AR-1221-3  
 R.T.: 3.420 min  
 Delta R.T.: -0.004 min  
 Response: 1087845  
 Conc: 8.67 ng/ml



#11 AR-1232-1

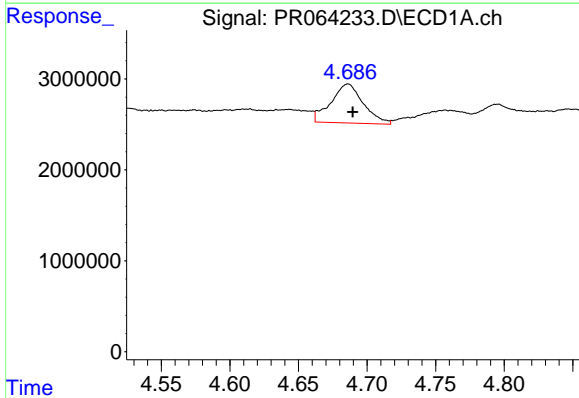
R.T.: 4.150 min  
 Delta R.T.: 0.017 min  
 Response: 614201  
 Conc: 4.13 ng/ml

Instrument :  
 ECD\_R  
 ClientSampleId :



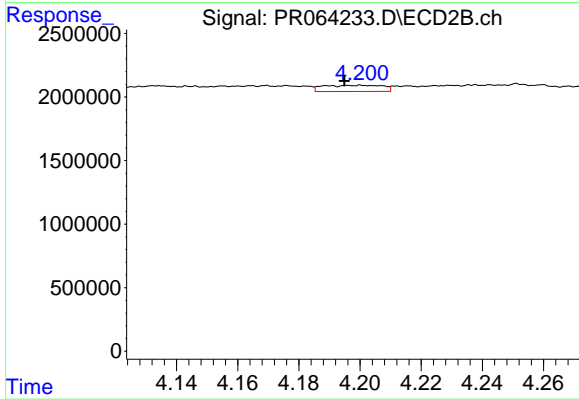
#11 AR-1232-1

R.T.: 3.420 min  
 Delta R.T.: -0.004 min  
 Response: 1087845  
 Conc: 10.39 ng/ml



#12 AR-1232-2

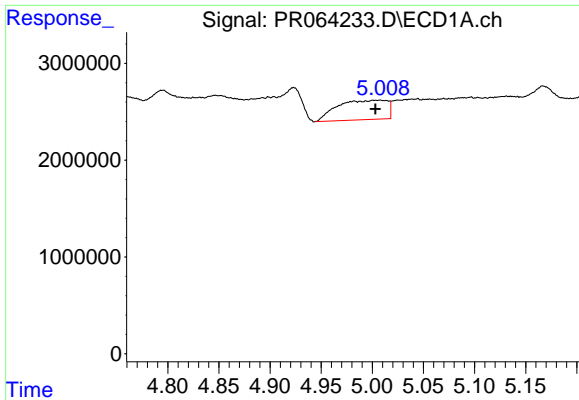
R.T.: 4.686 min  
 Delta R.T.: -0.004 min  
 Response: 7051779  
 Conc: 86.51 ng/ml



#12 AR-1232-2

R.T.: 4.201 min  
 Delta R.T.: 0.006 min  
 Response: 663023  
 Conc: 7.10 ng/ml

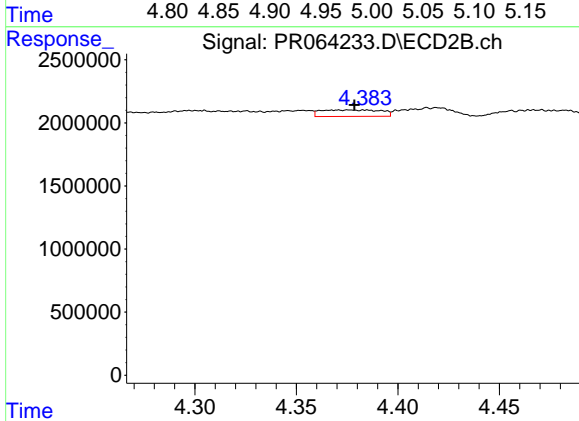




#13 AR-1232-3

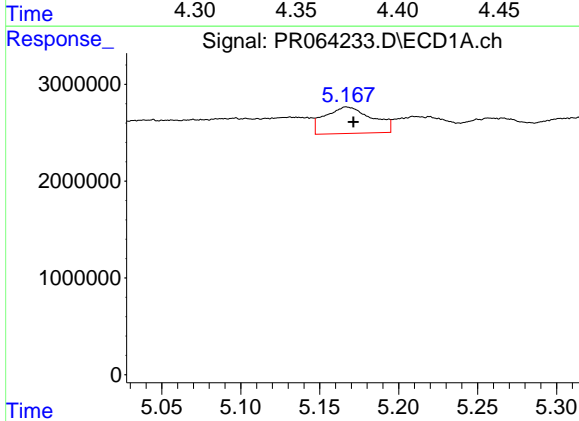
R.T.: 5.008 min  
 Delta R.T.: 0.005 min  
 Response: 6831741  
 Conc: 45.64 ng/ml

Instrument :  
 ECD\_R  
 ClientSampleId :



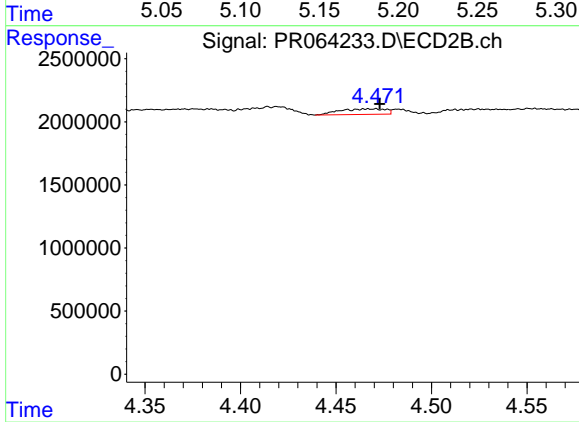
#13 AR-1232-3

R.T.: 4.385 min  
 Delta R.T.: 0.006 min  
 Response: 1055905  
 Conc: 20.86 ng/ml



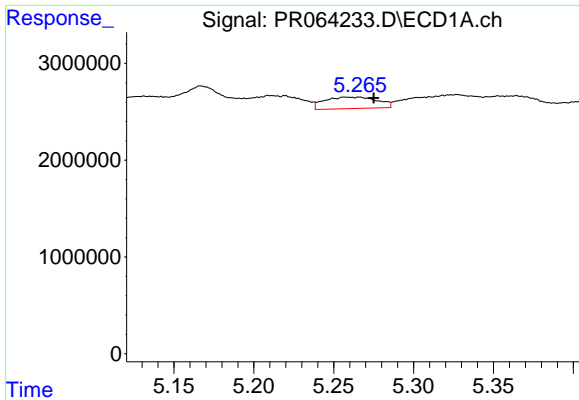
#14 AR-1232-4

R.T.: 5.167 min  
 Delta R.T.: -0.004 min  
 Response: 5673287  
 Conc: 77.77 ng/ml



#14 AR-1232-4

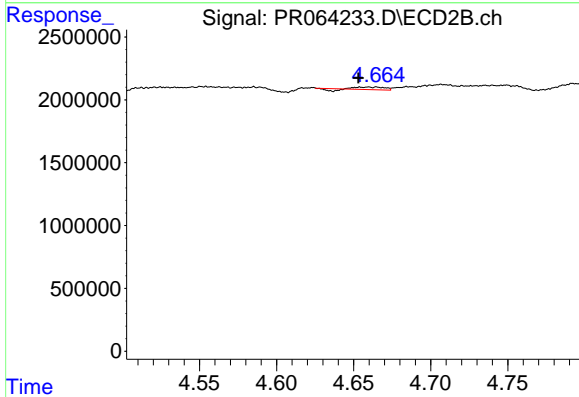
R.T.: 4.467 min  
 Delta R.T.: -0.006 min  
 Response: 733767  
 Conc: 16.07 ng/ml



#15 AR-1232-5

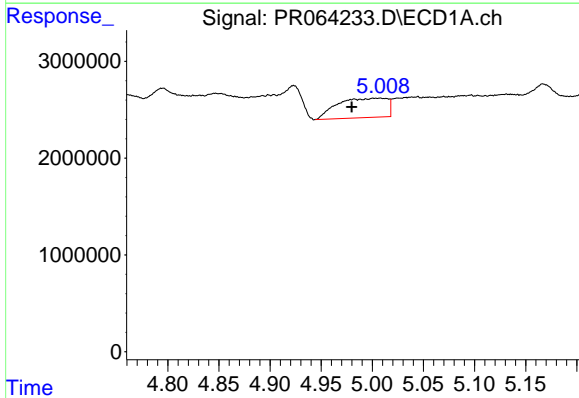
R.T.: 5.258 min  
 Delta R.T.: -0.018 min  
 Response: 2721186  
 Conc: 49.78 ng/ml

Instrument :  
 ECD\_R  
 ClientSampleId :



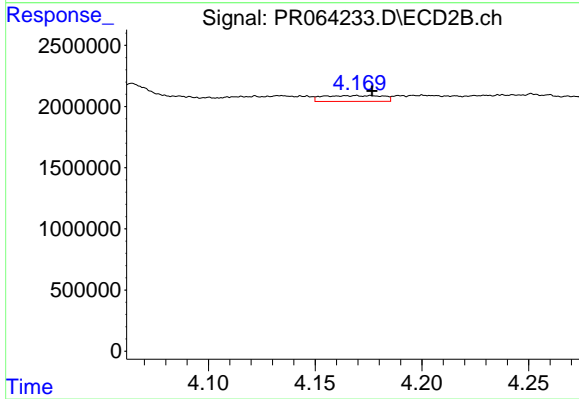
#15 AR-1232-5

R.T.: 4.665 min  
 Delta R.T.: 0.012 min  
 Response: 179578  
 Conc: 3.56 ng/ml



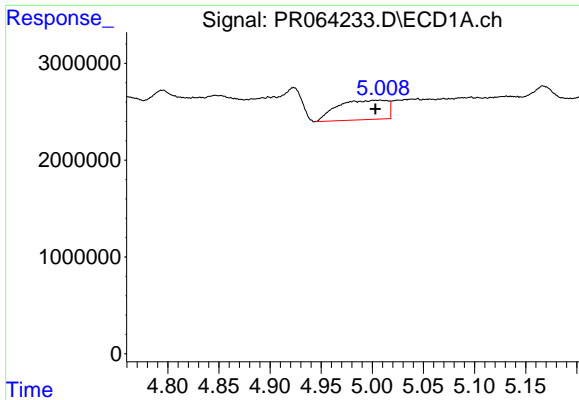
#16 AR-1242-1

R.T.: 5.008 min  
 Delta R.T.: 0.028 min  
 Response: 6831741  
 Conc: 37.83 ng/ml



#16 AR-1242-1

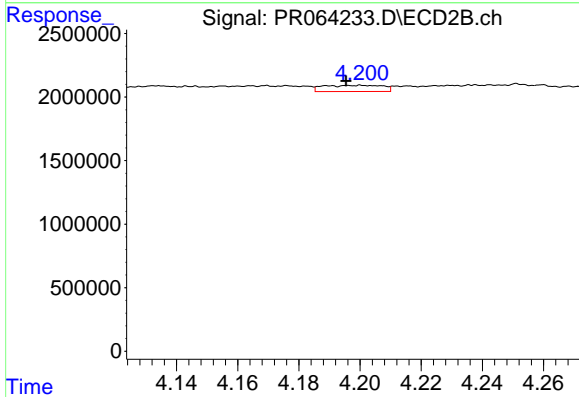
R.T.: 4.176 min  
 Delta R.T.: 0.000 min  
 Response: 920628  
 Conc: 7.49 ng/ml



#17 AR-1242-2

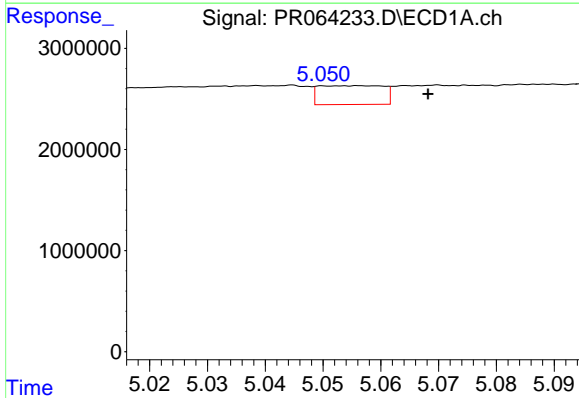
R.T.: 5.008 min  
 Delta R.T.: 0.005 min  
 Response: 6831741  
 Conc: 24.90 ng/ml

Instrument :  
 ECD\_R  
 ClientSampleId :



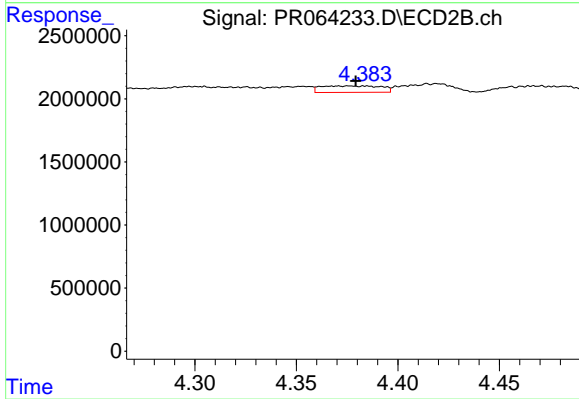
#17 AR-1242-2

R.T.: 4.201 min  
 Delta R.T.: 0.005 min  
 Response: 663023  
 Conc: 3.94 ng/ml



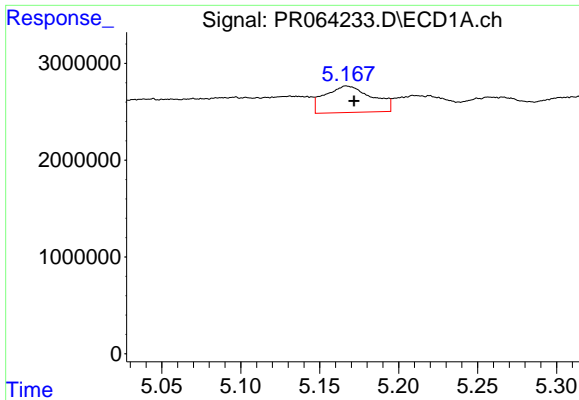
#18 AR-1242-3

R.T.: 5.056 min  
 Delta R.T.: -0.012 min  
 Response: 1436829  
 Conc: 8.17 ng/ml



#18 AR-1242-3

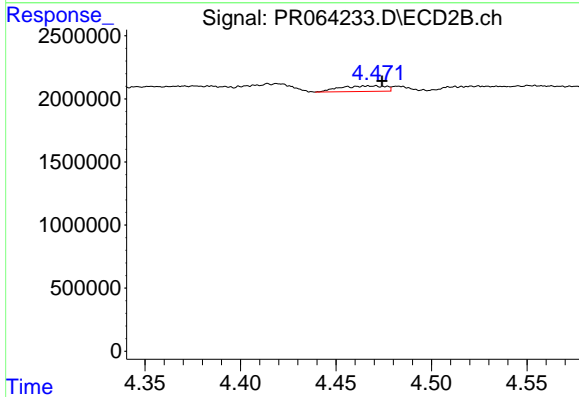
R.T.: 4.385 min  
 Delta R.T.: 0.005 min  
 Response: 1055905  
 Conc: 11.35 ng/ml



#19 AR-1242-4

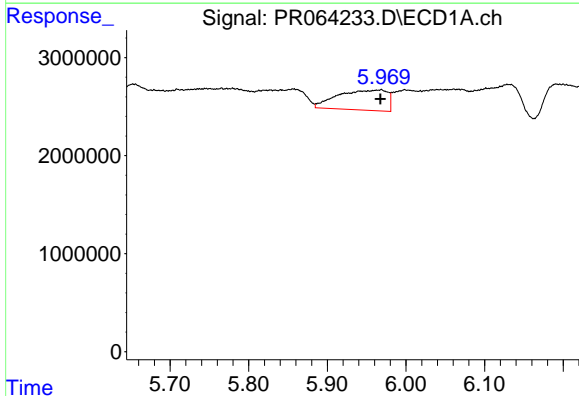
R.T.: 5.167 min  
Delta R.T.: -0.005 min  
Response: 5673287  
Conc: 41.50 ng/ml

Instrument :  
ECD\_R  
ClientSampleId :



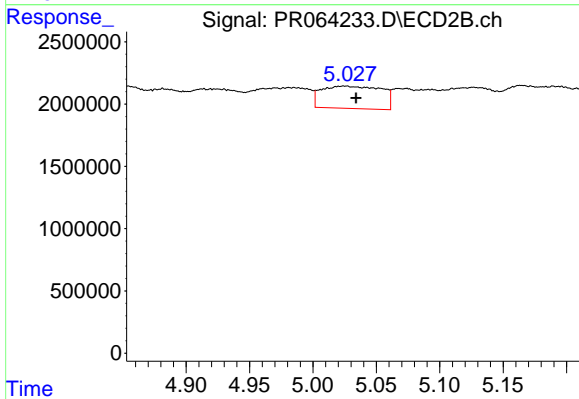
#19 AR-1242-4

R.T.: 4.467 min  
Delta R.T.: -0.007 min  
Response: 733767  
Conc: 8.07 ng/ml



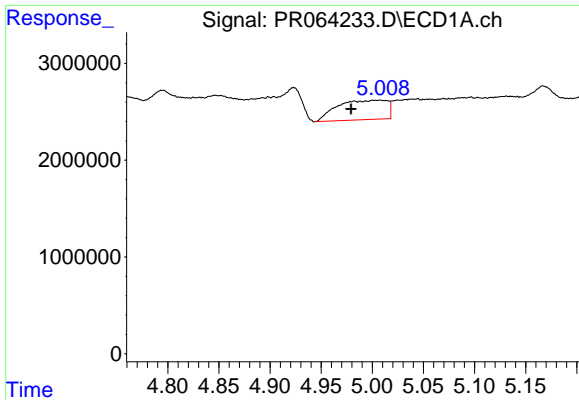
#20 AR-1242-5

R.T.: 5.969 min  
Delta R.T.: 0.000 min  
Response: 8981654  
Conc: 60.66 ng/ml



#20 AR-1242-5

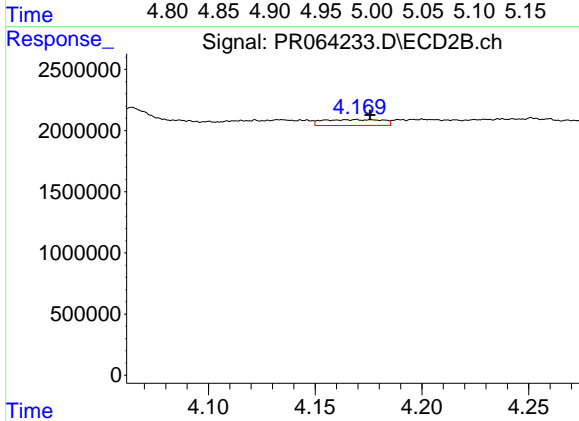
R.T.: 5.026 min  
Delta R.T.: -0.008 min  
Response: 5923851  
Conc: 53.44 ng/ml



#21 AR-1248-1

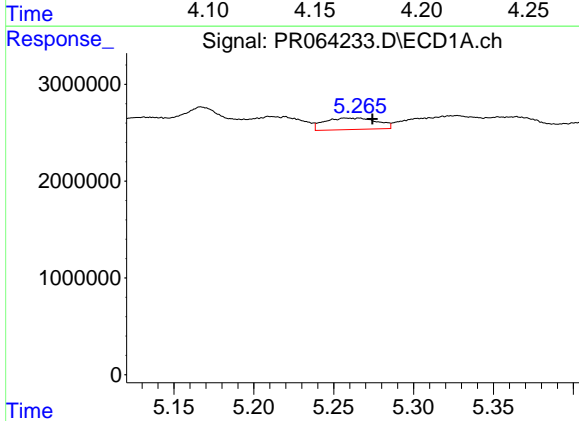
R.T.: 5.008 min  
 Delta R.T.: 0.028 min  
 Response: 6831741  
 Conc: 49.53 ng/ml

Instrument :  
 ECD\_R  
 ClientSampleId :



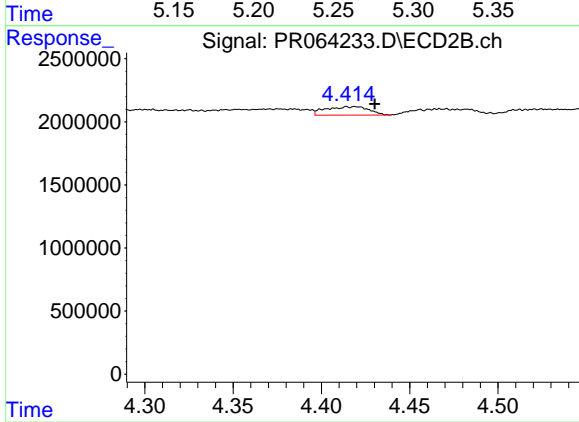
#21 AR-1248-1

R.T.: 4.176 min  
 Delta R.T.: 0.000 min  
 Response: 920628  
 Conc: 9.76 ng/ml



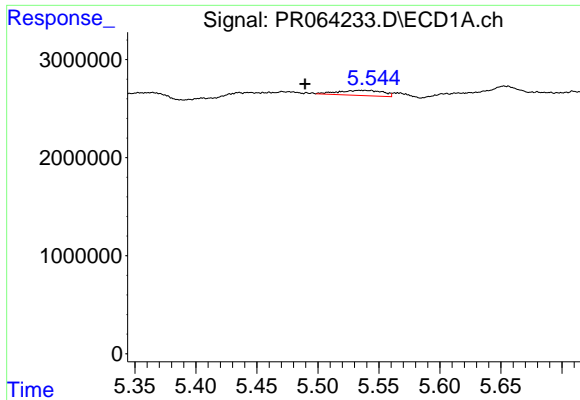
#22 AR-1248-2

R.T.: 5.258 min  
 Delta R.T.: -0.017 min  
 Response: 2721186  
 Conc: 13.90 ng/ml



#22 AR-1248-2

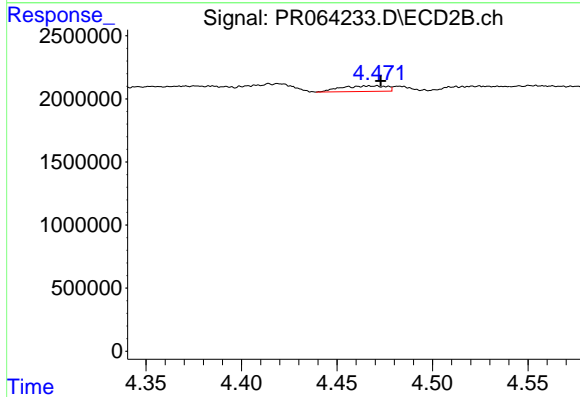
R.T.: 4.420 min  
 Delta R.T.: -0.011 min  
 Response: 1142743  
 Conc: 8.78 ng/ml



#23 AR-1248-3

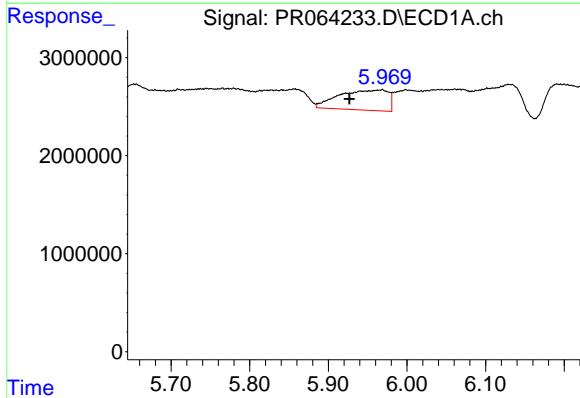
R.T.: 5.543 min  
 Delta R.T.: 0.054 min  
 Response: 1358940  
 Conc: 5.90 ng/ml

Instrument :  
 ECD\_R  
 ClientSampleId :



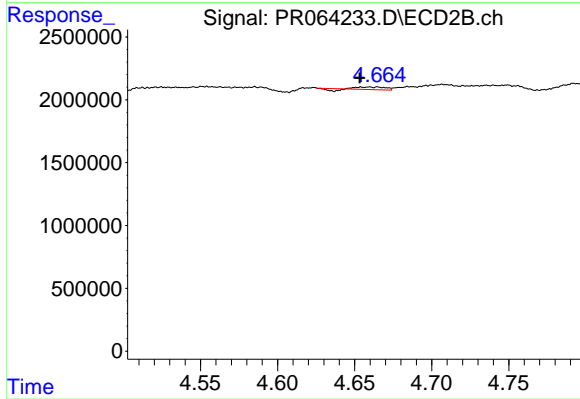
#23 AR-1248-3

R.T.: 4.467 min  
 Delta R.T.: -0.006 min  
 Response: 733767  
 Conc: 5.44 ng/ml



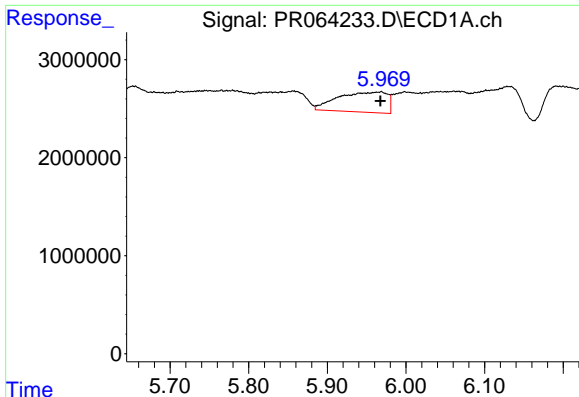
#24 AR-1248-4

R.T.: 5.969 min  
 Delta R.T.: 0.042 min  
 Response: 8981654  
 Conc: 36.28 ng/ml



#24 AR-1248-4

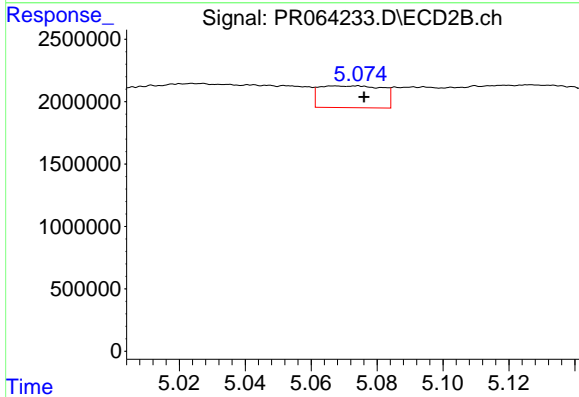
R.T.: 4.665 min  
 Delta R.T.: 0.012 min  
 Response: 179578  
 Conc: 1.12 ng/ml



#25 AR-1248-5

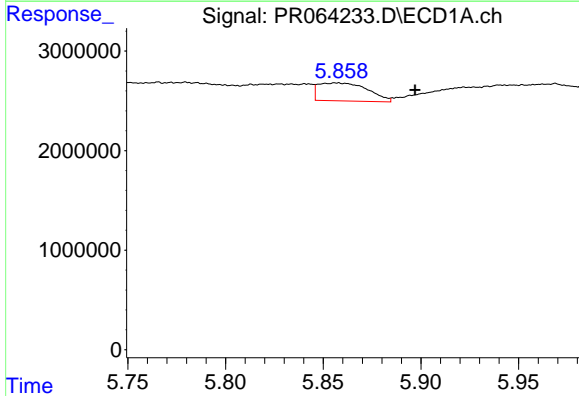
R.T.: 5.969 min  
 Delta R.T.: 0.001 min  
 Response: 8981654  
 Conc: 35.84 ng/ml

Instrument :  
 ECD\_R  
 ClientSampleId :



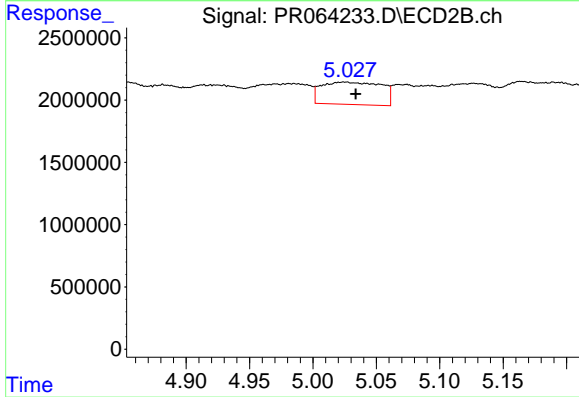
#25 AR-1248-5

R.T.: 5.074 min  
 Delta R.T.: -0.002 min  
 Response: 2314391  
 Conc: 15.31 ng/ml



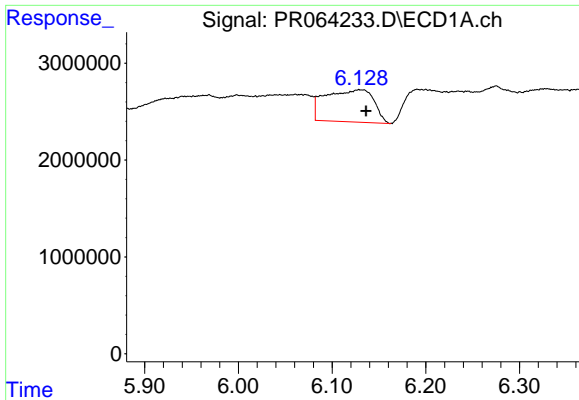
#26 AR-1254-1

R.T.: 5.857 min  
 Delta R.T.: -0.040 min  
 Response: 3187927  
 Conc: 12.71 ng/ml



#26 AR-1254-1

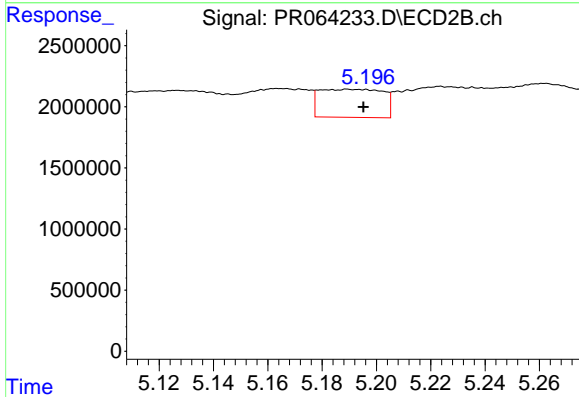
R.T.: 5.026 min  
 Delta R.T.: -0.008 min  
 Response: 5923851  
 Conc: 25.69 ng/ml



#27 AR-1254-2

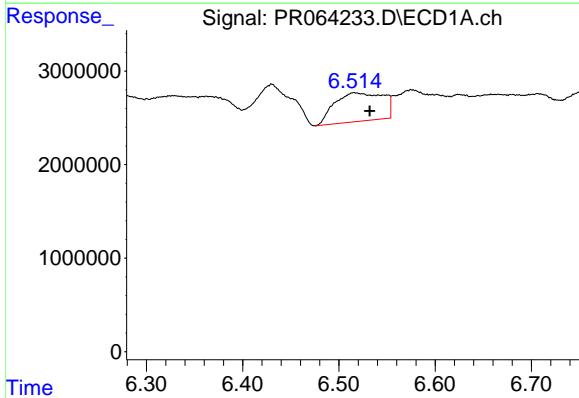
R.T.: 6.130 min  
 Delta R.T.: -0.006 min  
 Response: 11959254  
 Conc: 31.44 ng/ml

Instrument :  
 ECD\_R  
 ClientSampleId :



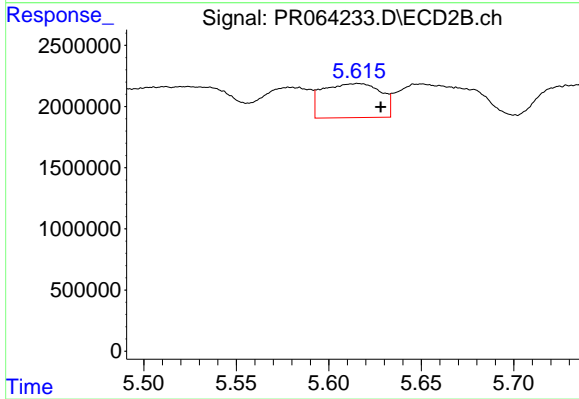
#27 AR-1254-2

R.T.: 5.190 min  
 Delta R.T.: -0.006 min  
 Response: 3733065  
 Conc: 18.85 ng/ml



#28 AR-1254-3

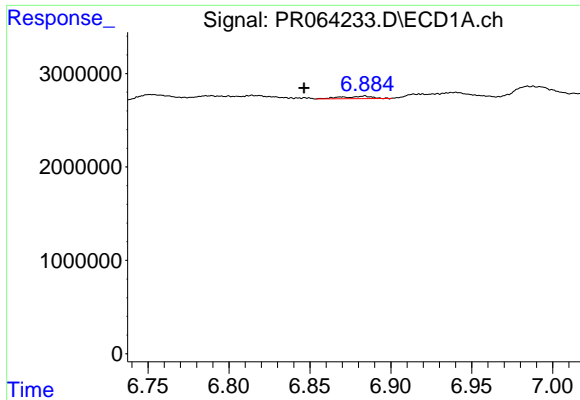
R.T.: 6.517 min  
 Delta R.T.: -0.015 min  
 Response: 10626351  
 Conc: 27.27 ng/ml



#28 AR-1254-3

R.T.: 5.616 min  
 Delta R.T.: -0.012 min  
 Response: 6082716  
 Conc: 19.43 ng/ml

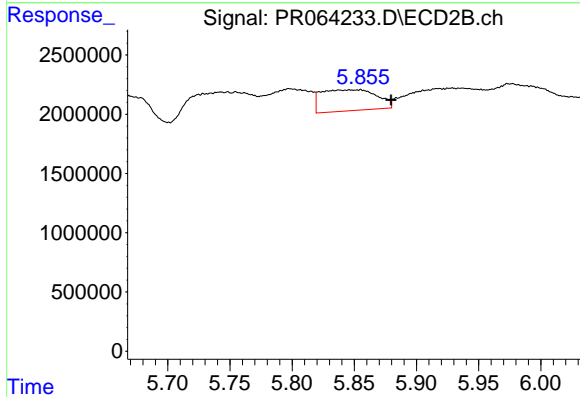




#29 AR-1254-4

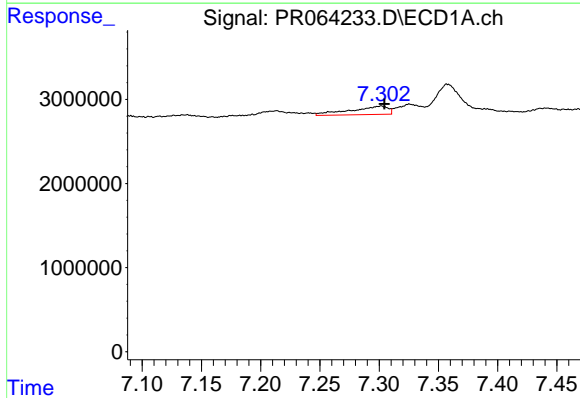
R.T.: 6.883 min  
 Delta R.T.: 0.037 min  
 Response: 349958  
 Conc: 1.31 ng/ml

Instrument :  
 ECD\_R  
 ClientSampleId :



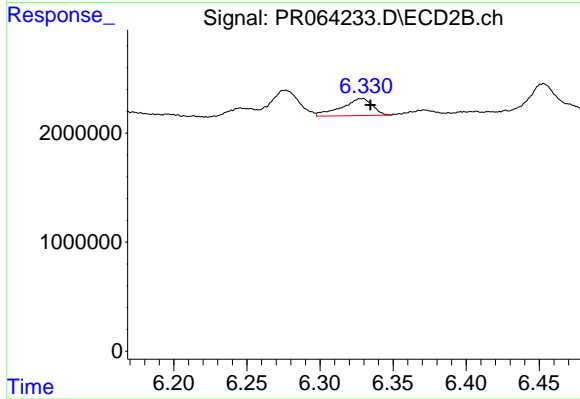
#29 AR-1254-4

R.T.: 5.855 min  
 Delta R.T.: -0.025 min  
 Response: 5548416  
 Conc: 29.53 ng/ml



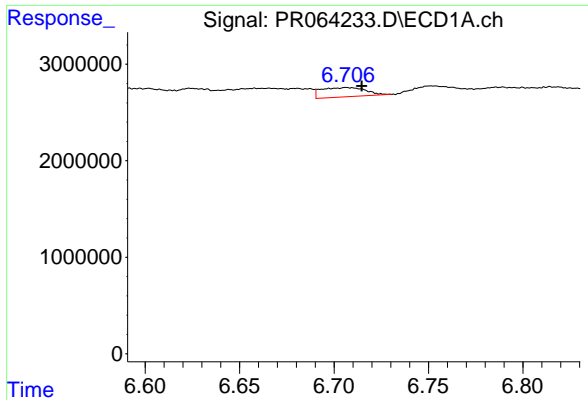
#30 AR-1254-5

R.T.: 7.301 min  
 Delta R.T.: -0.003 min  
 Response: 2202274  
 Conc: 7.49 ng/ml



#30 AR-1254-5

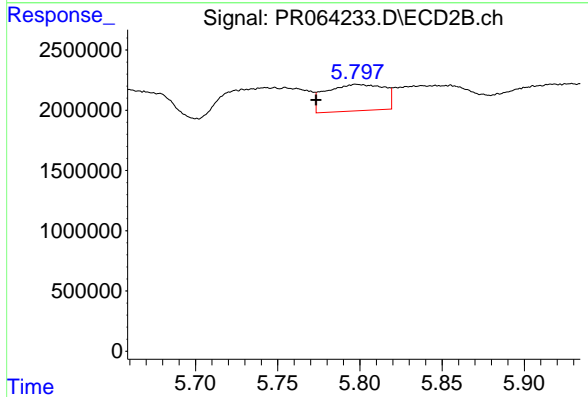
R.T.: 6.329 min  
 Delta R.T.: -0.006 min  
 Response: 2284238  
 Conc: 8.37 ng/ml



#31 AR-1260-1

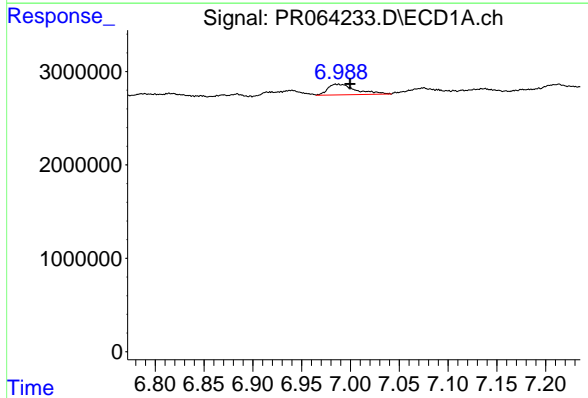
R.T.: 6.707 min  
 Delta R.T.: -0.008 min  
 Response: 1577386  
 Conc: 5.31 ng/ml

Instrument :  
 ECD\_R  
 ClientSampleId :



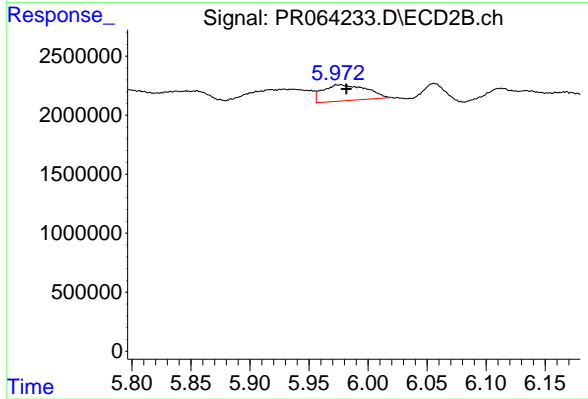
#31 AR-1260-1

R.T.: 5.798 min  
 Delta R.T.: 0.025 min  
 Response: 5411096  
 Conc: 24.10 ng/ml



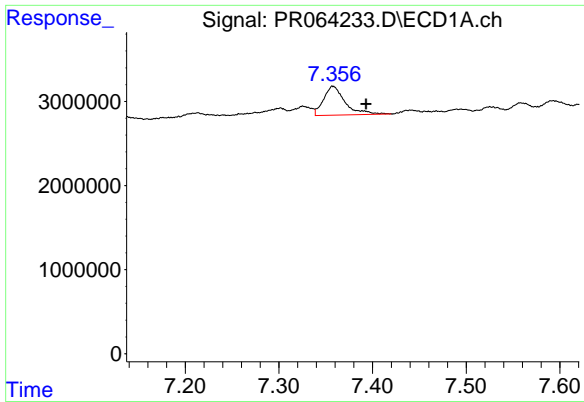
#32 AR-1260-2

R.T.: 6.987 min  
 Delta R.T.: -0.013 min  
 Response: 2292871  
 Conc: 6.63 ng/ml



#32 AR-1260-2

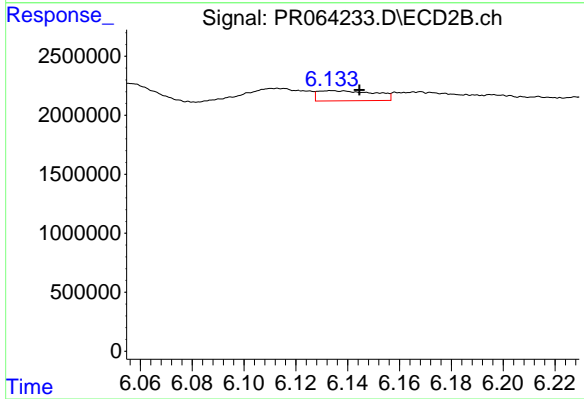
R.T.: 5.976 min  
 Delta R.T.: -0.005 min  
 Response: 3476989  
 Conc: 13.19 ng/ml



#33 AR-1260-3

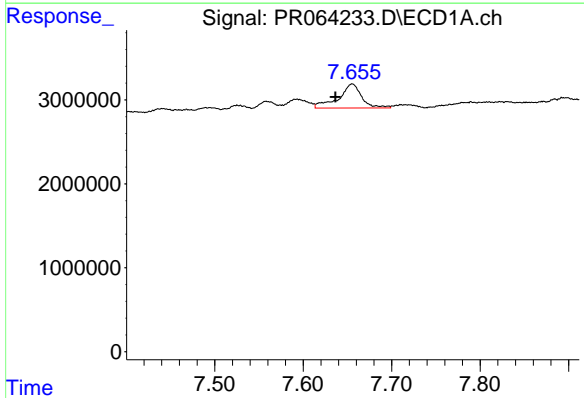
R.T.: 7.358 min  
 Delta R.T.: -0.035 min  
 Response: 5473851  
 Conc: 21.30 ng/ml

Instrument :  
 ECD\_R  
 ClientSampleId :



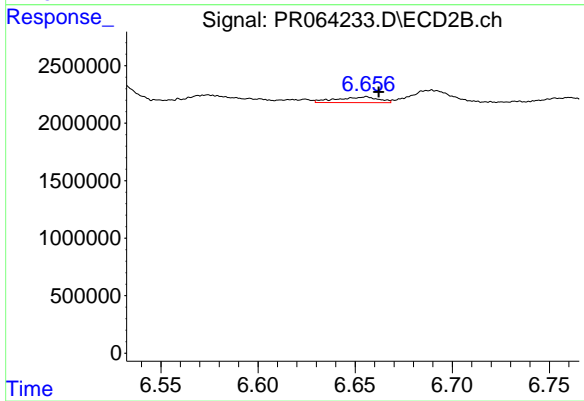
#33 AR-1260-3

R.T.: 6.134 min  
 Delta R.T.: -0.011 min  
 Response: 1307149  
 Conc: 5.17 ng/ml



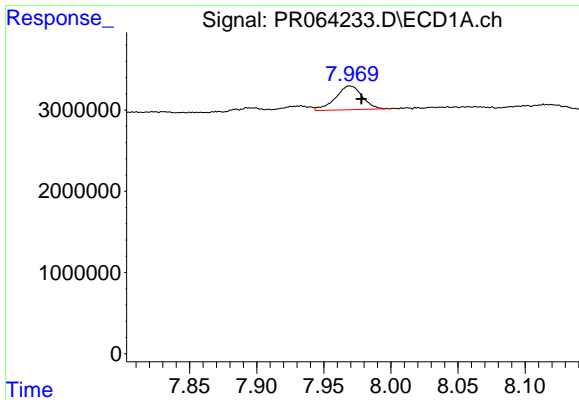
#34 AR-1260-4

R.T.: 7.655 min  
 Delta R.T.: 0.019 min  
 Response: 5181409  
 Conc: 18.33 ng/ml



#34 AR-1260-4

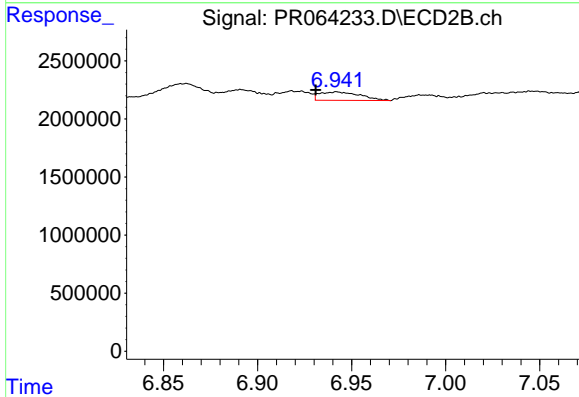
R.T.: 6.656 min  
 Delta R.T.: -0.006 min  
 Response: 743255  
 Conc: 3.77 ng/ml



#35 AR-1260-5

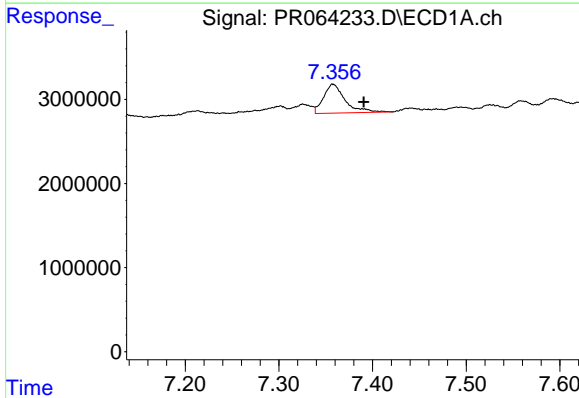
R.T.: 7.970 min  
 Delta R.T.: -0.009 min  
 Response: 4101609  
 Conc: 7.60 ng/ml

Instrument :  
 ECD\_R  
 ClientSampleId :



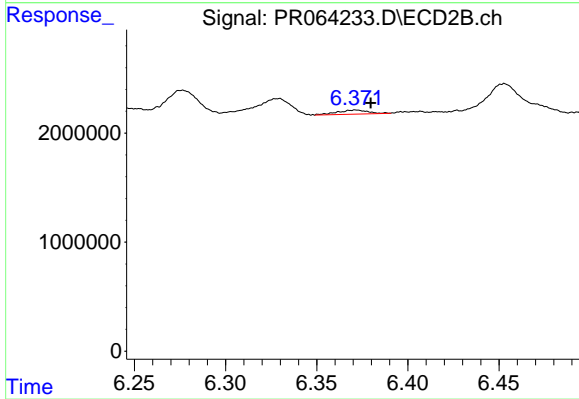
#35 AR-1260-5

R.T.: 6.942 min  
 Delta R.T.: 0.011 min  
 Response: 1099414  
 Conc: 2.59 ng/ml



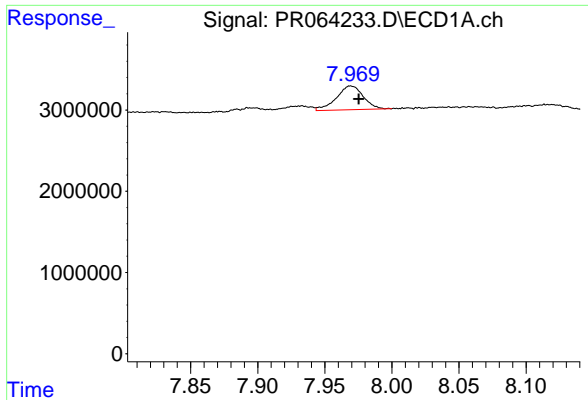
#36 AR-1262-1

R.T.: 7.358 min  
 Delta R.T.: -0.033 min  
 Response: 5473851  
 Conc: 14.54 ng/ml



#36 AR-1262-1

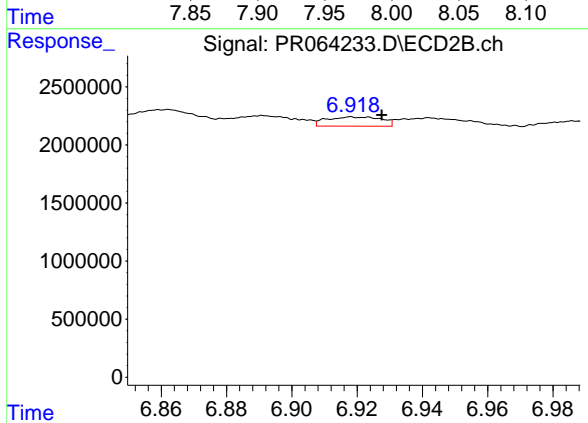
R.T.: 6.372 min  
 Delta R.T.: -0.008 min  
 Response: 436107  
 Conc: 1.50 ng/ml



#37 AR-1262-2

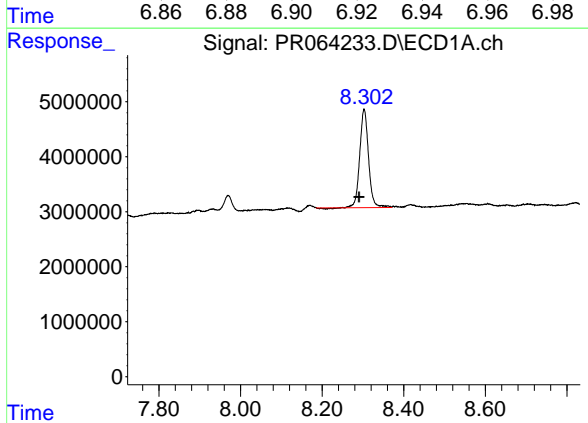
R.T.: 7.970 min  
 Delta R.T.: -0.006 min  
 Response: 4101609  
 Conc: 6.66 ng/ml

Instrument :  
 ECD\_R  
 ClientSampleId :



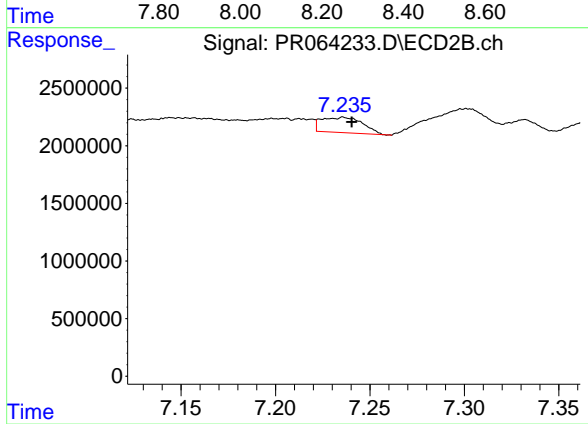
#37 AR-1262-2

R.T.: 6.918 min  
 Delta R.T.: -0.009 min  
 Response: 934940  
 Conc: 2.00 ng/ml



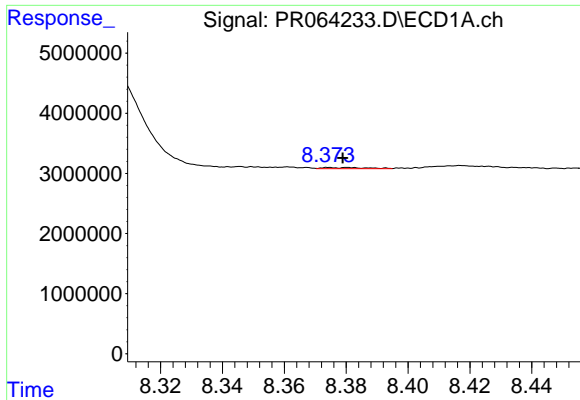
#38 AR-1262-3

R.T.: 8.303 min  
 Delta R.T.: 0.012 min  
 Response: 26687541  
 Conc: 63.69 ng/ml



#38 AR-1262-3

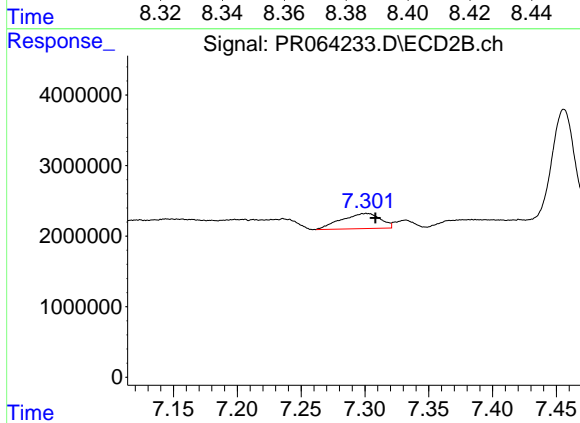
R.T.: 7.236 min  
 Delta R.T.: -0.004 min  
 Response: 2016246  
 Conc: 11.04 ng/ml



#39 AR-1262-4

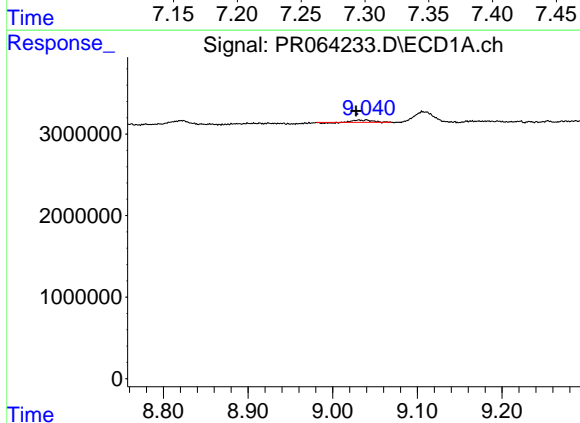
R.T.: 8.379 min  
 Delta R.T.: 0.000 min  
 Response: 178720  
 Conc: 0.55 ng/ml

Instrument :  
 ECD\_R  
 ClientSampleId :



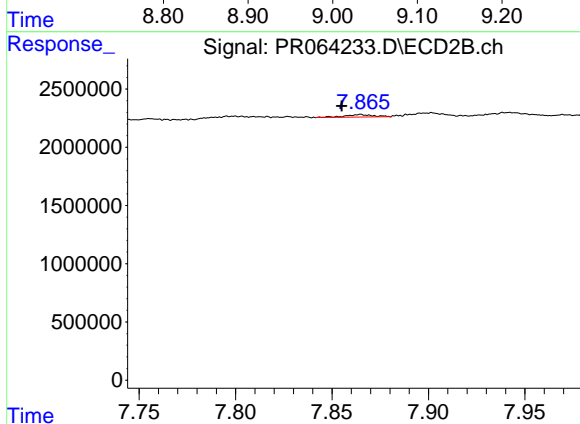
#39 AR-1262-4

R.T.: 7.301 min  
 Delta R.T.: -0.007 min  
 Response: 4604280  
 Conc: 13.67 ng/ml



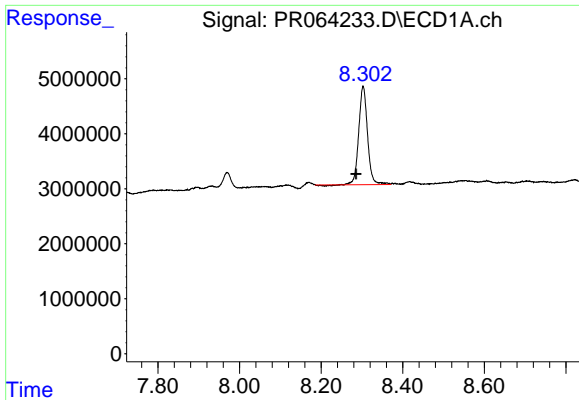
#40 AR-1262-5

R.T.: 9.039 min  
 Delta R.T.: 0.011 min  
 Response: 406160  
 Conc: 1.85 ng/ml



#40 AR-1262-5

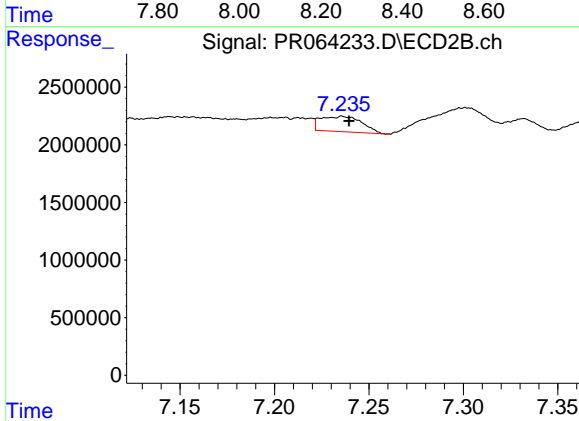
R.T.: 7.865 min  
 Delta R.T.: 0.010 min  
 Response: 211574  
 Conc: 1.45 ng/ml



#41 AR-1268-1

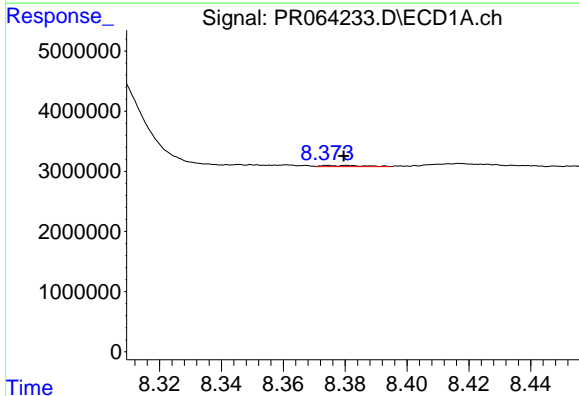
R.T.: 8.303 min  
 Delta R.T.: 0.017 min  
 Response: 26687541  
 Conc: 36.38 ng/ml

Instrument :  
 ECD\_R  
 ClientSampleId :



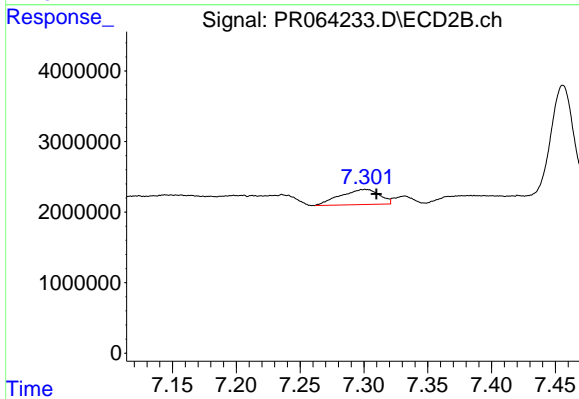
#41 AR-1268-1

R.T.: 7.236 min  
 Delta R.T.: -0.003 min  
 Response: 2016246  
 Conc: 3.88 ng/ml



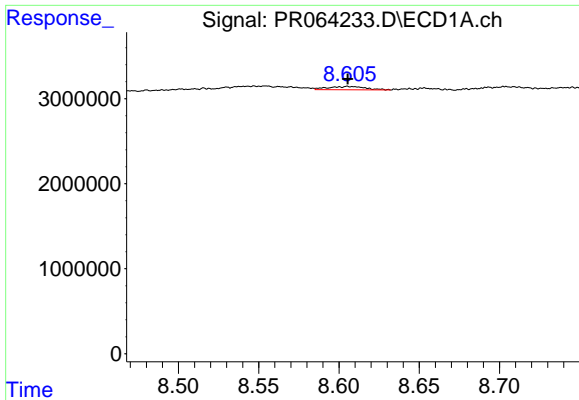
#42 AR-1268-2

R.T.: 8.379 min  
 Delta R.T.: 0.000 min  
 Response: 178720  
 Conc: 0.27 ng/ml



#42 AR-1268-2

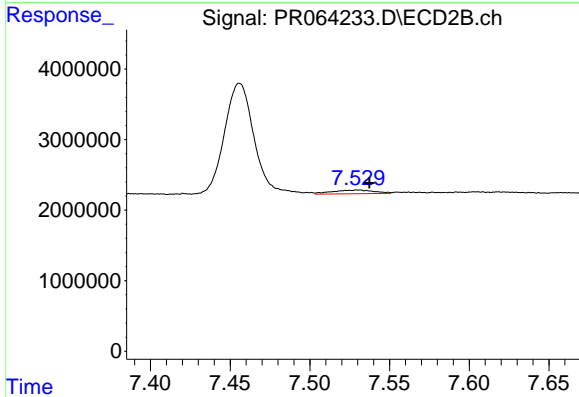
R.T.: 7.301 min  
 Delta R.T.: -0.009 min  
 Response: 4604280  
 Conc: 9.75 ng/ml



#43 AR-1268-3

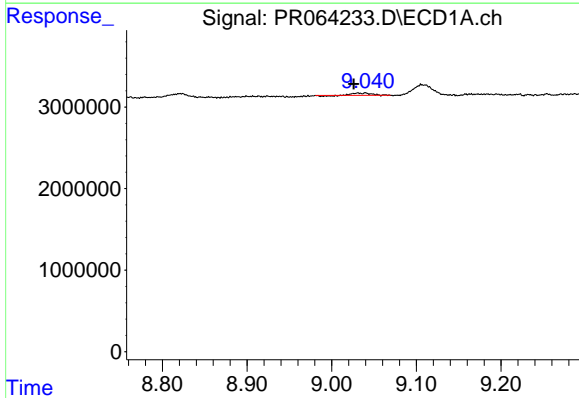
R.T.: 8.606 min  
 Delta R.T.: 0.000 min  
 Response: 643933  
 Conc: 1.12 ng/ml

Instrument :  
 ECD\_R  
 ClientSampleId :



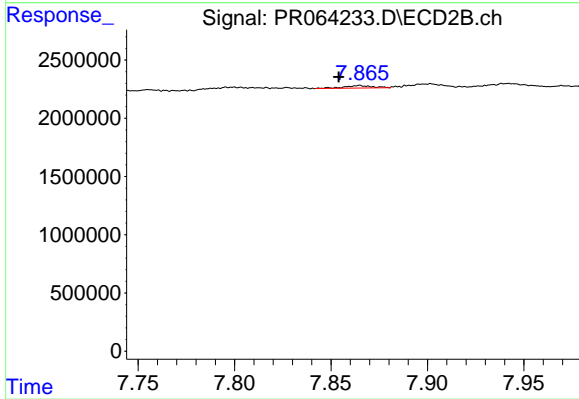
#43 AR-1268-3

R.T.: 7.530 min  
 Delta R.T.: -0.007 min  
 Response: 942850  
 Conc: 2.36 ng/ml



#44 AR-1268-4

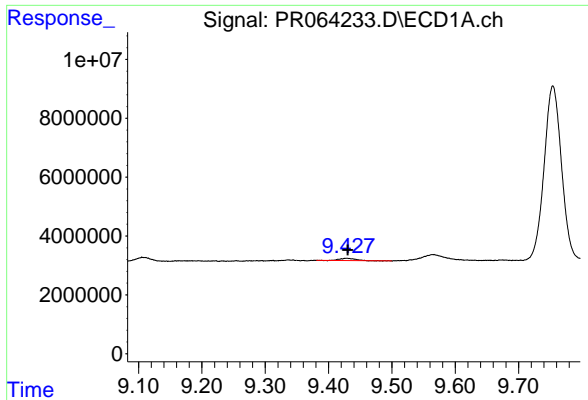
R.T.: 9.039 min  
 Delta R.T.: 0.013 min  
 Response: 406160  
 Conc: 1.74 ng/ml



#44 AR-1268-4

R.T.: 7.865 min  
 Delta R.T.: 0.011 min  
 Response: 211574  
 Conc: 1.30 ng/ml

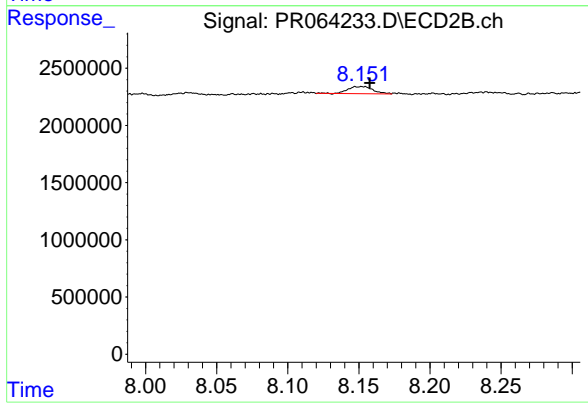




#45 AR-1268-5

R.T.: 9.429 min  
Delta R.T.: -0.001 min  
Response: 1221218  
Conc: 0.69 ng/ml

Instrument :  
ECD\_R  
ClientSampleId :



#45 AR-1268-5

R.T.: 8.153 min  
Delta R.T.: -0.005 min  
Response: 757946  
Conc: 0.65 ng/ml