

Data Path : Z:\pestpcbsrv\HPCHEM1\ECD\_R\Data\PR102520\  
 Data File : PR048181.D  
 Signal(s) : Signal #1: ECD1A.ch Signal #2: ECD2B.ch  
 Acq On : 24 Oct 2020 19:46  
 Operator : AJ\MA  
 Sample : L4505-20  
 Misc :  
 ALS Vial : 34 Sample Multiplier: 1

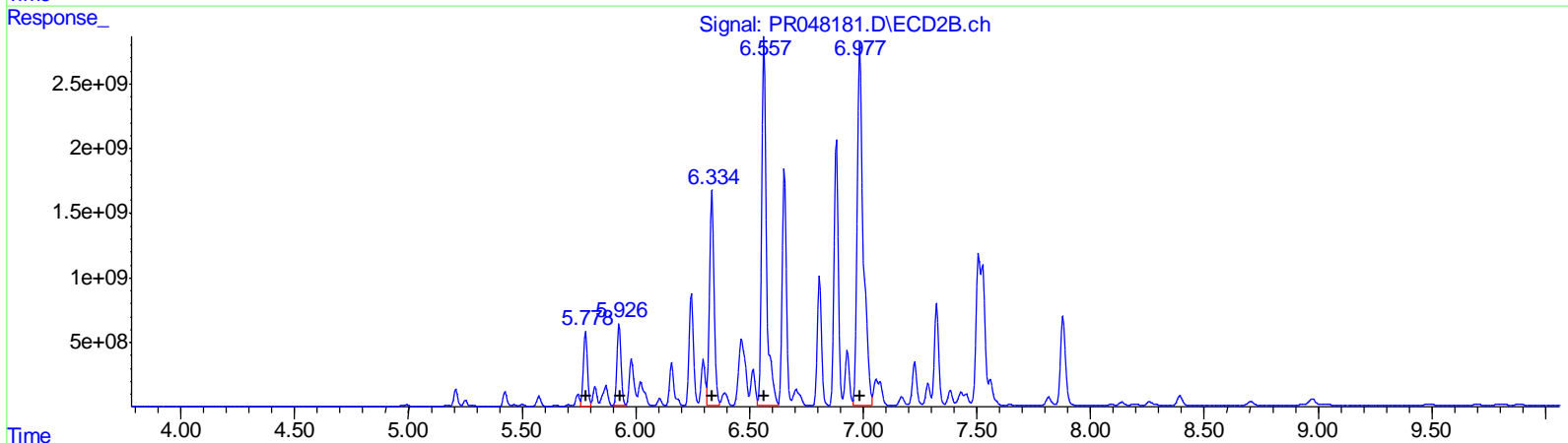
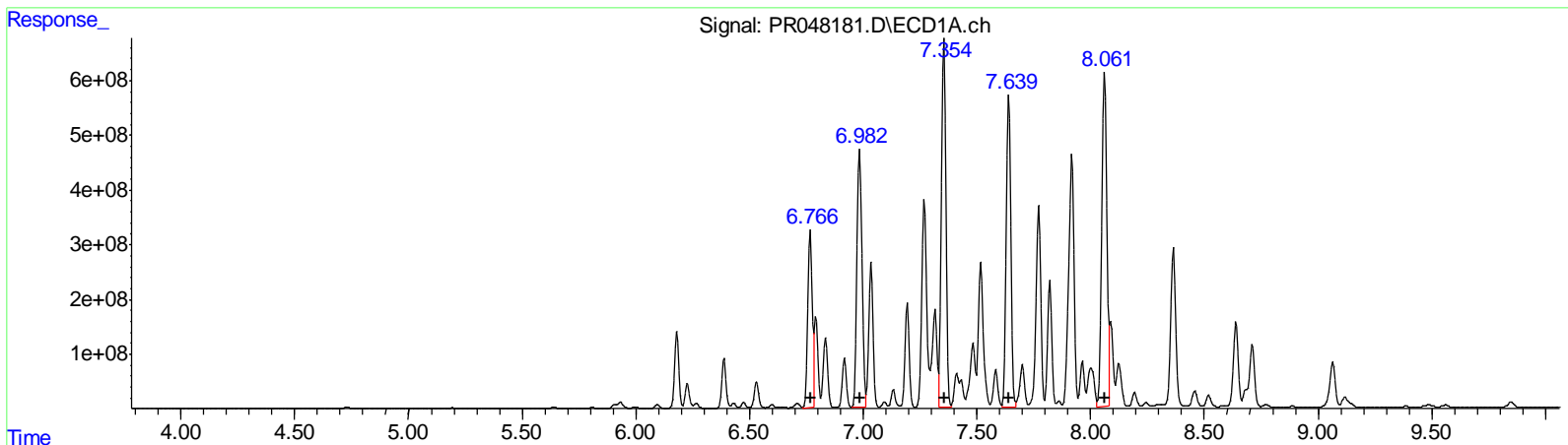
Instrument :  
 ECD\_R  
 Client Sampled :  
 C0BJ0

Manual Integrations  
 APPROVED

mohammad  
 10/26/2020 5:09:19 PM

Integration File signal 1: autoint1.e  
 Integration File signal 2: autoint2.e  
 Quant Time: Oct 26 07:32:15 2020  
 Quant Method : Z:\pestpcbsrv\HPCHEM1\ECD\_R\Method\PR102120CLP.M  
 Quant Title : GC EXTRACTABLES  
 QLast Update : Wed Oct 21 10:52:16 2020  
 Response via : Initial Calibration  
 Integrator: ChemStation

Volume Inj. : 1 µl  
 Signal #1 Phase : ZB MR1 Signal #2 Phase: ZB MR2  
 Signal #1 Info : 30Mx0.32mmx 0.5µm Signal #2 Info : 30M x 0.32mm x 0.25µm



QEdit

(26) AR-1254-1 (L6)

R.T.	Response	Conc
6.77	4408897394	47532.06
6.98	7457383244	51757.44
7.35	9478586350	61816.72
7.64	8111817394	68400.31
8.06	9598524978	75378.41

(26) AR-1254-1 #2 (L6)

R.T.	Response	Conc
5.78	7156685394	44608.88
5.93	7874048279	48050.00
6.33	23216101229	64615.17
6.57	38056373886	79243.22
6.99	48561483663	78056.85

(+) = Expected Retention Time

Data Path : Z:\pestpcbsrv\HPCHEM1\ECD\_R\Data\PR102520\  
 Data File : PR048181.D  
 Signal(s) : Signal #1: ECD1A.ch Signal #2: ECD2B.ch  
 Acq On : 24 Oct 2020 19:46  
 Operator : AJ\MA  
 Sample : L4505-20  
 Misc :  
 ALS Vial : 34 Sample Multiplier: 1

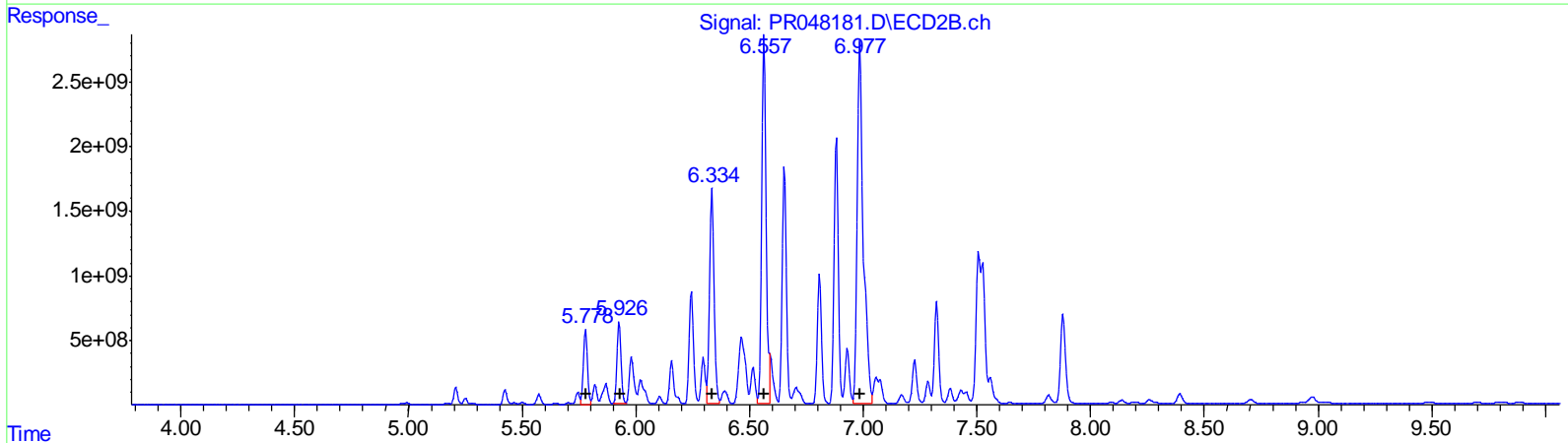
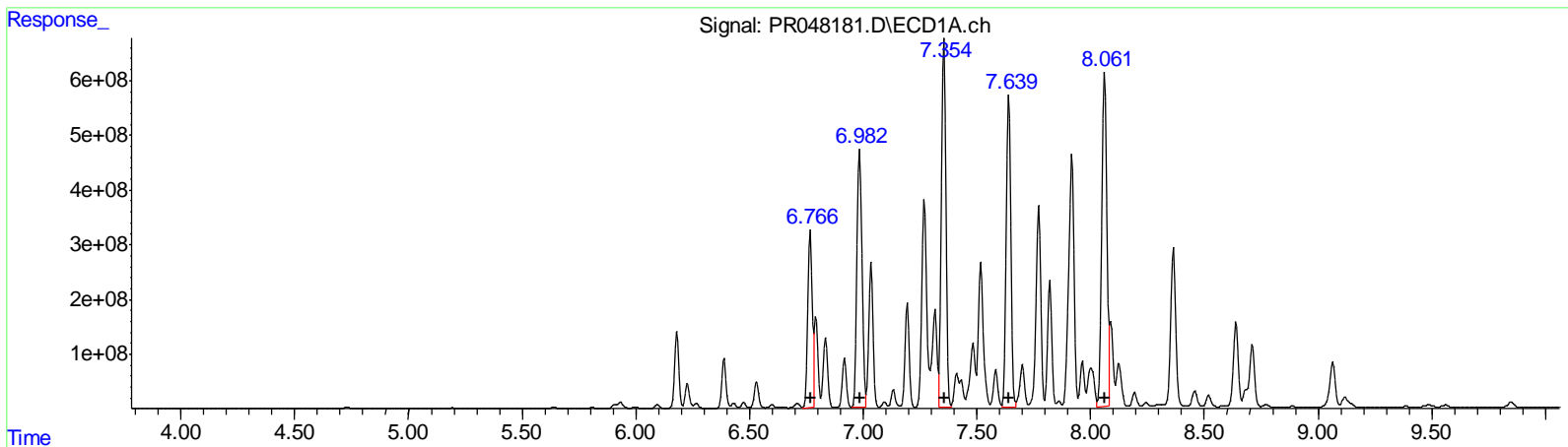
Instrument :  
 ECD\_R  
 ClientSampled :  
 C0BJ0

Manual Integrations  
 APPROVED

mohammad  
 10/26/2020 5:09:19 PM

Integration File signal 1: autoint1.e  
 Integration File signal 2: autoint2.e  
 Quant Time: Oct 26 07:32:15 2020  
 Quant Method : Z:\pestpcbsrv\HPCHEM1\ECD\_R\Method\PR102120CLP.M  
 Quant Title : GC EXTRACTABLES  
 QLast Update : Wed Oct 21 10:52:16 2020  
 Response via : Initial Calibration  
 Integrator: ChemStation

Volume Inj. : 1 µl  
 Signal #1 Phase : ZB MR1 Signal #2 Phase: ZB MR2  
 Signal #1 Info : 30Mx0.32mmx 0.5µm Signal #2 Info : 30M x 0.32mm x 0.25µm



QEdit

(26) AR-1254-1 #2 (L6)	R.T.	Response	Conc
	6.77	4408897394	47532.06
	6.98	7457383244	51757.44
	7.35	9478586350	61816.72
	7.64	8111817394	68400.31
	8.06	9598524978	75378.41

(26) AR-1254-1 #2 (L6)	R.T.	Response	Conc
	5.78	7156685394	44608.88
	5.93	7874048279	48050.00
	6.33	23216101229	64615.17
	6.56	33839943432	70463.52
	6.99	48561483663	78056.85

(+) = Expected Retention Time

Data Path : Z:\pestpcbsrv\HPCHEM1\ECD\_R\Data\PR102520\  
 Data File : PR048181.D  
 Signal(s) : Signal #1: ECD1A.ch Signal #2: ECD2B.ch  
 Acq On : 24 Oct 2020 19:46  
 Operator : AJ\MA  
 Sample : L4505-20  
 Misc :  
 ALS Vial : 34 Sample Multiplier: 1

Integration File signal 1: autoint1.e  
 Integration File signal 2: autoint2.e  
 Quant Time: Oct 26 07:32:15 2020  
 Quant Method : Z:\pestpcbsrv\HPCHEM1\ECD\_R\Method\PR102120CLP.M  
 Quant Title : GC EXTRACTABLES  
 QLast Update : Wed Oct 21 10:52:16 2020  
 Response via : Initial Calibration  
 Integrator: ChemStation

Volume Inj. : 1 µl  
 Signal #1 Phase : ZB MR1 Signal #2 Phase: ZB MR2  
 Signal #1 Info : 30Mx0.32mmx 0.5µm Signal #2 Info : 30M x 0.32mm x 0.25µm

Compound	RT#1	RT#2	Resp#1	Resp#2	ng/ml	ng/ml
-----						
System Monitoring Compounds						
1) SA Tetrachlo...	4.729	3.881	27153313	39829664	15.032	14.749
2) SA Decachlor...	10.661	8.973	151.4E6	862.9E6	75.152	77.127
Target Compounds						
26) L6 AR-1254-1	6.766	5.778	4408.9E6	7156.7E6	47532.056	44608.879
27) L6 AR-1254-2	6.983	5.926	7457.4E6	7874.0E6	51757.441	48050.000
28) L6 AR-1254-3	7.354	6.334	9478.6E6	23216.1E6	61816.723	64615.170
29) L6 AR-1254-4	7.639	6.556	8111.8E6	33839.9E6	68400.310	70463.524m
30) L6 AR-1254-5	8.061	6.988	9598.5E6	48561.5E6	75378.406	78056.848
-----						

AJ  
10/27/20

(f)=RT Delta > 1/2 Window (#)=Amounts differ by > 25% (m)=manual int.

Instrument :  
ECD\_R  
Client:Sampled :  
COBJ0

Manual Integrations  
APPROVED  
mohammad  
10/26/2020 5:09:19 PM