

Data Path : Z:\pestpcbsrv\HPCHEM1\ECD_R\Data\PR102820\
 Data File : PR048342.D
 Signal(s) : Signal #1: ECD1A.ch Signal #2: ECD2B.ch
 Acq On : 28 Oct 2020 17:48
 Operator : AJ\MA
 Sample : L4506-22 5X
 Misc :
 ALS Vial : 33 Sample Multiplier: 1

Instrument :
 ECD_R
 ClientSampleId :
 COBL1

Integration File signal 1: autoint1.e
 Integration File signal 2: autoint2.e
 Quant Time: Oct 29 01:57:04 2020
 Quant Method : Z:\pestpcbsrv\HPCHEM1\ECD_R\Method\PR102120CLP.M
 Quant Title : GC EXTRACTABLES
 QLast Update : Wed Oct 21 10:52:16 2020
 Response via : Initial Calibration
 Integrator: ChemStation

Volume Inj. : 1 µl
 Signal #1 Phase : ZB MR1 Signal #2 Phase: ZB MR2
 Signal #1 Info : 30Mx0.32mmx 0.5µm Signal #2 Info : 30M x 0.32mm x 0.25µm

Compound	RT#1	RT#2	Resp#1	Resp#2	ng/ml	ng/ml

System Monitoring Compounds						
1) SA Tetrachlo...	4.726	3.878	8242954	12807288	4.563	4.743
2) SA Decachlor...	10.659	8.986	16504386	81781979	8.194	7.310
Target Compounds						
3) L1 AR-1016-1	5.905	4.989	26422130	126.8E6	348.715	1735.803 #
4) L1 AR-1016-2	5.928	4.989	96368503	126.8E6	905.290	859.725
5) L1 AR-1016-3	5.996	5.166	15311612	65923928	234.847	855.992 #
6) L1 AR-1016-4	6.091	5.207	46067887	155.9E6	863.911	3809.095 #
7) L1 AR-1016-5	6.386	5.422	153.5E6	123.5E6	2854.120	1686.111 #
8) L2 AR-1221-1	0.000	4.078	0	30423631	N.D.	1030.398 #
9) L2 AR-1221-2	0.000	4.228f	0	43811077	N.D.	2050.477 #
10) L2 AR-1221-3	0.000	4.262	0	12084551	N.D.	177.981 #
11) L3 AR-1232-1	0.000	4.262	0	12084551	N.D.	212.142 #
12) L3 AR-1232-2	5.635	4.989	26106392	126.8E6	1128.784	1940.705 #
13) L3 AR-1232-3	5.928	5.166	96368503	65923928	2022.457	1892.487
14) L3 AR-1232-4	6.091	5.249	46067887	80754724	1915.504	3404.717 #
15) L3 AR-1232-5	6.178	5.422	201.2E6	123.5E6	10651.987	3859.592 #
16) L4 AR-1242-1	5.905	4.989	26422130	126.8E6	415.569	2064.328 #
17) L4 AR-1242-2	5.928	4.989	96368503	126.8E6	1082.282	1066.457
18) L4 AR-1242-3	5.996	5.166	15311612	65923928	279.871	963.309 #
19) L4 AR-1242-4	6.091	5.249	46067887	80754724	1026.625	1626.363 #
20) L4 AR-1242-5	6.833	5.777	155.6E6	528.7E6	2920.187	6187.084 #
21) L5 AR-1248-1	5.905	4.989	26422130	126.8E6	564.173	2778.610 #
22) L5 AR-1248-2	6.178	5.207	201.2E6	155.9E6	3004.569	2705.451
23) L5 AR-1248-3	6.386	5.249	153.5E6	80754724	2065.545	1137.038 #
24) L5 AR-1248-4	6.790	5.422	145.4E6	123.5E6	1614.093	1253.656
25) L5 AR-1248-5	6.833	5.819	155.6E6	136.2E6	1801.498	903.633 #
26) L6 AR-1254-1	6.764	5.777	432.5E6	528.7E6	4663.092	3295.196 #
27) L6 AR-1254-2	6.981	5.925	738.2E6	670.8E6	5123.153	4093.243
28) L6 AR-1254-3	7.353	6.334	920.6E6	1934.4E6	6004.073	5383.707
29) L6 AR-1254-4	7.638	6.564	703.3E6	3255.1E6	5930.077	6777.942
30) L6 AR-1254-5	8.060	6.986	987.6E6	4129.0E6	7755.840	6636.957
31) L7 AR-1260-1	7.516	6.465	322.0E6	876.0E6	3138.787	4941.582 #
32) L7 AR-1260-2	7.769	6.654	600.6E6	1850.0E6	4733.745	3073.028 #
33) L7 AR-1260-3	8.125	6.809	86202204	949.9E6	890.367	2568.017 #
34) L7 AR-1260-4	8.363	7.288	297.9E6	176.0E6	2722.135	388.790 #
35) L7 AR-1260-5	8.711	7.529	116.6E6	1221.5E6	513.009	648.346 #
36) L8 AR-1262-1	8.125	6.986	86202204	4129.0E6	613.105	12849.167 #
37) L8 AR-1262-2	8.711	7.529	116.6E6	1221.5E6	462.261	587.536 #
38) L8 AR-1262-3	9.065	7.822	93472390	57524559	536.796	69.681 #
39) L8 AR-1262-4	9.118	7.885	29517134	685.5E6	223.215	512.061 #
40) L8 AR-1262-5	9.847	8.402	12801872	99206030	133.537	156.194
41) L9 AR-1268-1	9.065	7.822	93472390	57524559	307.328	23.163 #
42) L9 AR-1268-2	9.118	7.885	29517134	685.5E6	104.887	328.125 #

Data Path : Z:\pestpcbsrv\HPCHEM1\ECD_R\Data\PR102820\
 Data File : PR048342.D
 Signal(s) : Signal #1: ECD1A.ch Signal #2: ECD2B.ch
 Acq On : 28 Oct 2020 17:48
 Operator : AJ\MA
 Sample : L4506-22 5X
 Misc :
 ALS Vial : 33 Sample Multiplier: 1

Instrument :
 ECD_R
 ClientSampleId :
 C0BL1

Integration File signal 1: autoint1.e
 Integration File signal 2: autoint2.e
 Quant Time: Oct 29 01:57:04 2020
 Quant Method : Z:\pestpcbsrv\HPCHEM1\ECD_R\Method\PR102120CLP.M
 Quant Title : GC EXTRACTABLES
 QLast Update : Wed Oct 21 10:52:16 2020
 Response via : Initial Calibration
 Integrator: ChemStation

Volume Inj. : 1 µl
 Signal #1 Phase : ZB MR1 Signal #2 Phase: ZB MR2
 Signal #1 Info : 30Mx0.32mmx 0.5µm Signal #2 Info : 30M x 0.32mm x 0.25µm

	Compound	RT#1	RT#2	Resp#1	Resp#2	ng/ml	ng/ml
43)	L9 AR-1268-3	0.000	8.097	0	8526045	N.D.	4.567 #
44)	L9 AR-1268-4	9.847	8.402	12801872	99206030	117.723	136.070
45)	L9 AR-1268-5	10.294	8.713	5497233	31138538	7.013	5.768

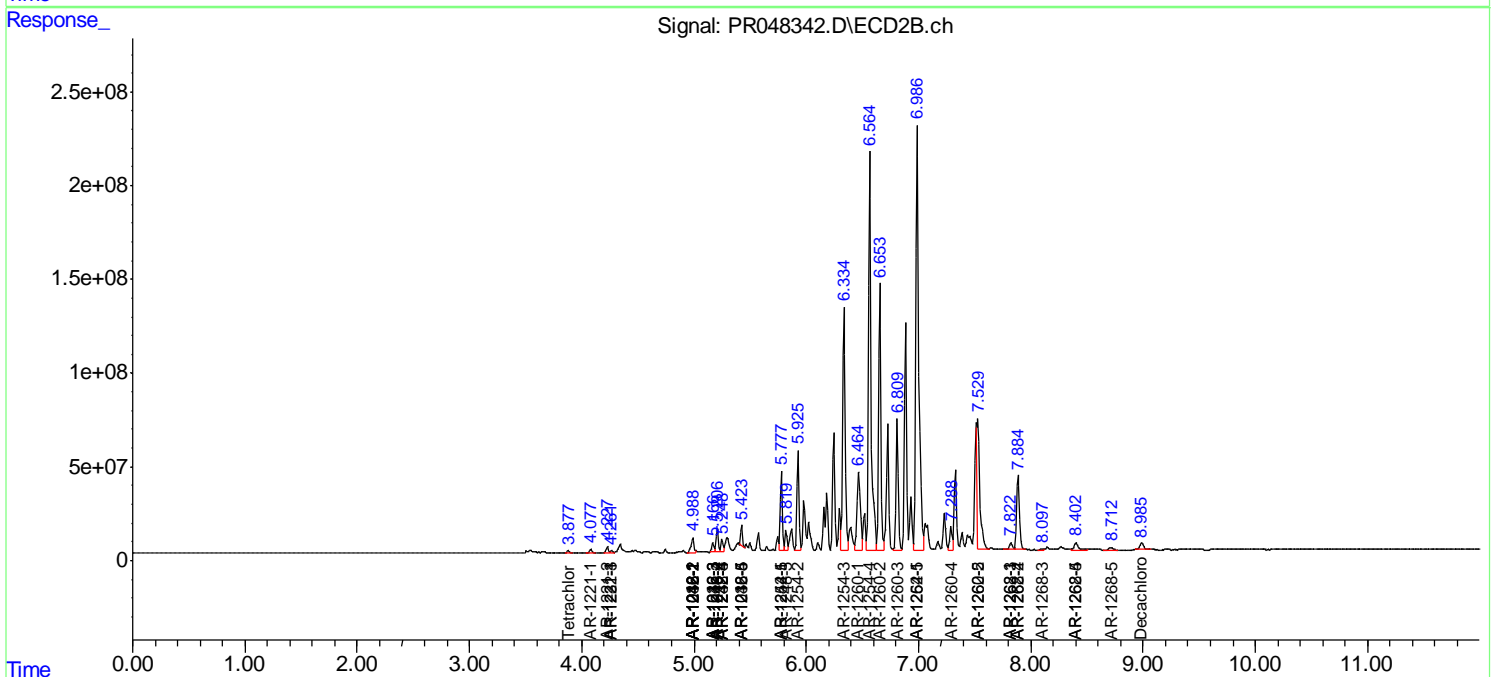
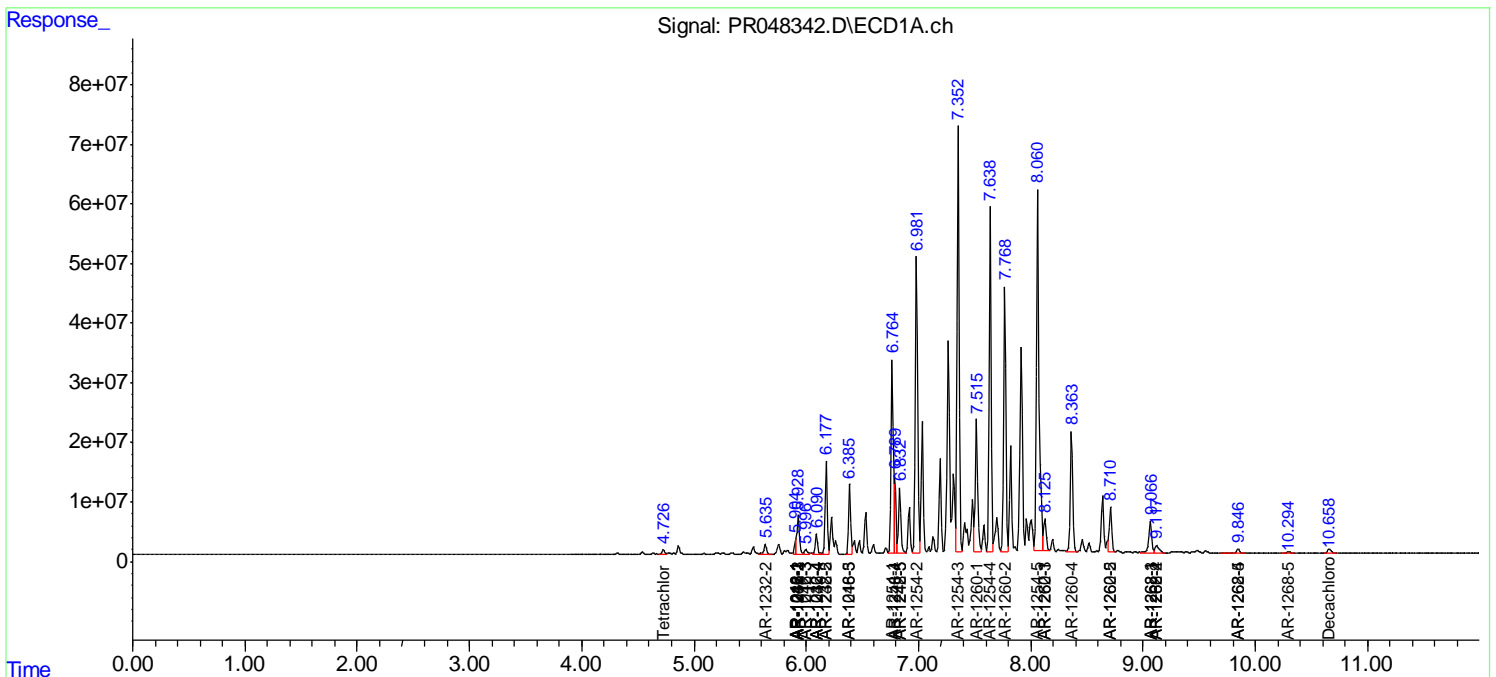
(f)=RT Delta > 1/2 Window (#)=Amounts differ by > 25% (m)=manual int.

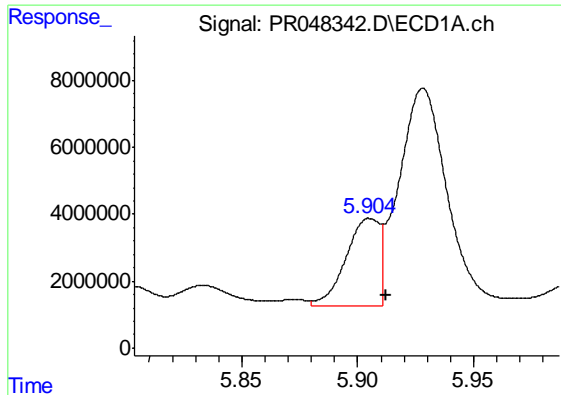
Data Path : Z:\pestpcbsrv\HPCHEM1\ECD_R\Data\PR102820\
 Data File : PR048342.D
 Signal(s) : Signal #1: ECD1A.ch Signal #2: ECD2B.ch
 Acq On : 28 Oct 2020 17:48
 Operator : AJ\MA
 Sample : L4506-22 5X
 Misc :
 ALS Vial : 33 Sample Multiplier: 1

Instrument :
 ECD_R
 ClientSampled :
 COBL1

Integration File signal 1: autoint1.e
 Integration File signal 2: autoint2.e
 Quant Time: Oct 29 01:57:04 2020
 Quant Method : Z:\pestpcbsrv\HPCHEM1\ECD_R\Method\PR102120CLP.M
 Quant Title : GC EXTRACTABLES
 QLast Update : Wed Oct 21 10:52:16 2020
 Response via : Initial Calibration
 Integrator: ChemStation

Volume Inj. : 1 µl
 Signal #1 Phase : ZB MR1 Signal #2 Phase: ZB MR2
 Signal #1 Info : 30Mx0.32mmx 0.5µm Signal #2 Info : 30M x 0.32mm x 0.25µm

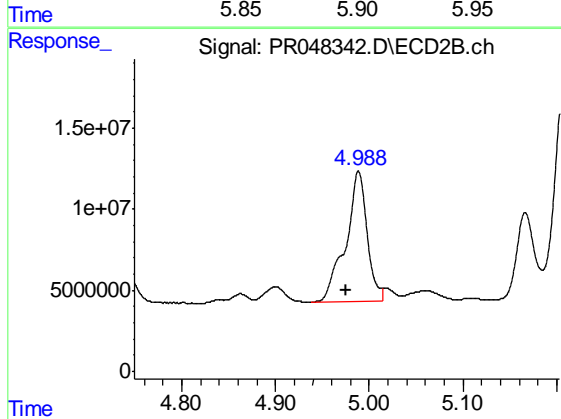




#3 AR-1016-1

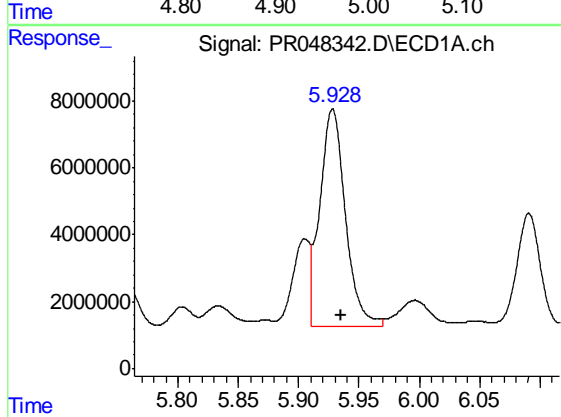
R.T.: 5.905 min
 Delta R.T.: -0.007 min
 Response: 26422130
 Conc: 348.71 ng/ml

Instrument :
 ECD_R
 ClientSampled :
 C0BL1



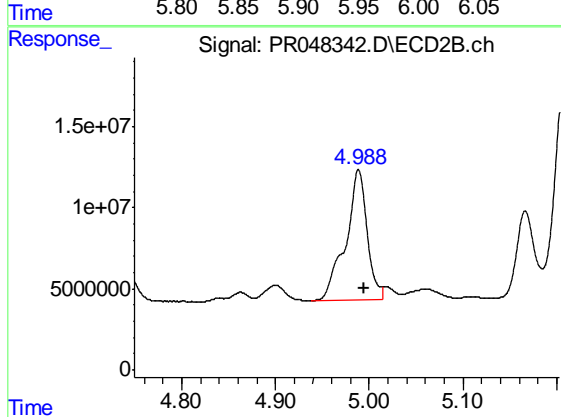
#3 AR-1016-1

R.T.: 4.989 min
 Delta R.T.: 0.013 min
 Response: 126811113
 Conc: 1735.80 ng/ml



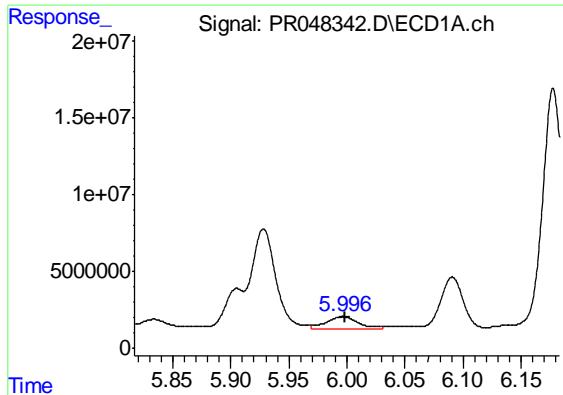
#4 AR-1016-2

R.T.: 5.928 min
 Delta R.T.: -0.007 min
 Response: 96368503
 Conc: 905.29 ng/ml



#4 AR-1016-2

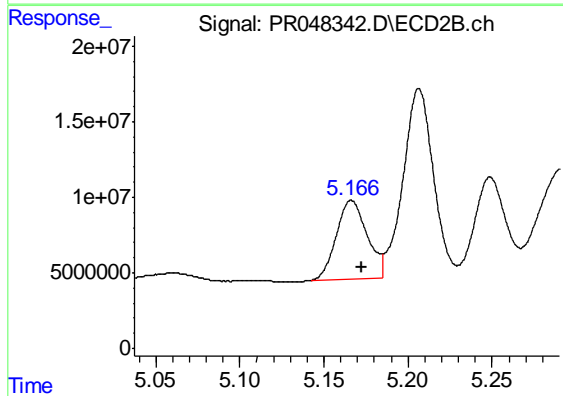
R.T.: 4.989 min
 Delta R.T.: -0.007 min
 Response: 126811113
 Conc: 859.72 ng/ml



#5 AR-1016-3

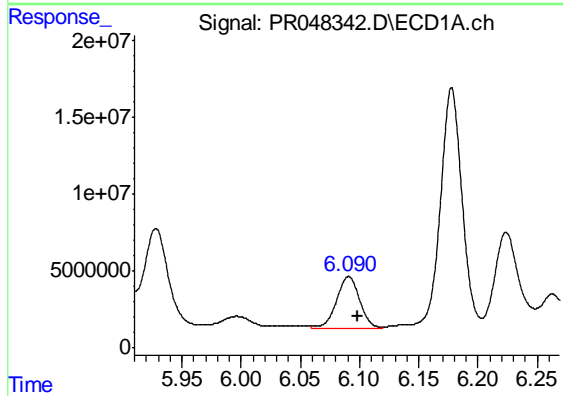
R.T.: 5.996 min
 Delta R.T.: -0.003 min
 Response: 15311612
 Conc: 234.85 ng/ml

Instrument :
 ECD_R
 ClientSampled :
 C0BL1



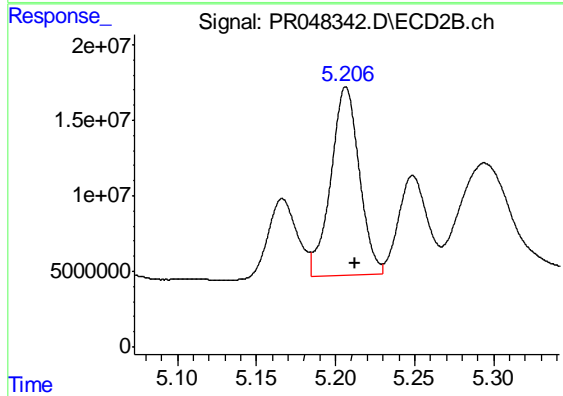
#5 AR-1016-3

R.T.: 5.166 min
 Delta R.T.: -0.006 min
 Response: 65923928
 Conc: 855.99 ng/ml



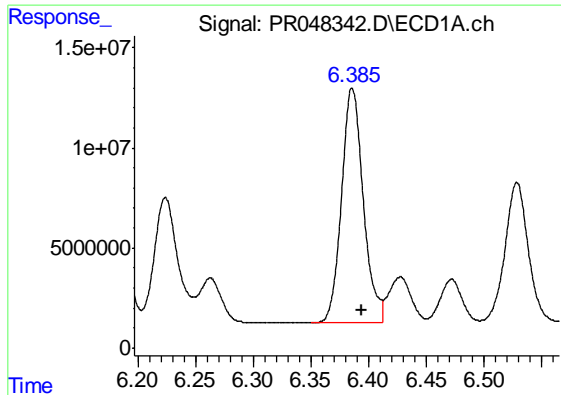
#6 AR-1016-4

R.T.: 6.091 min
 Delta R.T.: -0.008 min
 Response: 46067887
 Conc: 863.91 ng/ml



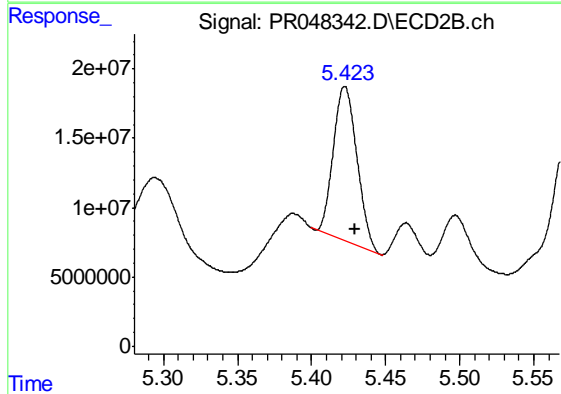
#6 AR-1016-4

R.T.: 5.207 min
 Delta R.T.: -0.006 min
 Response: 155938683
 Conc: 3809.09 ng/ml

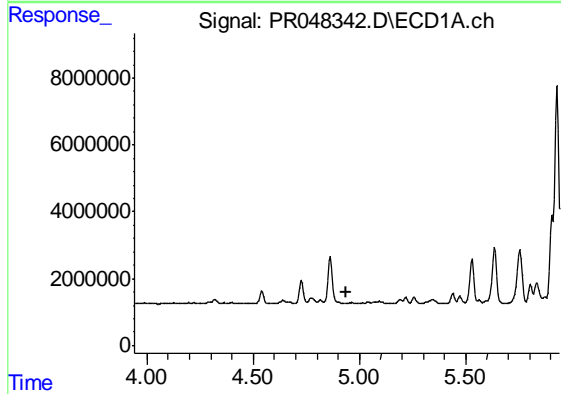


#7 AR-1016-5
 R.T.: 6.386 min
 Delta R.T.: -0.008 min
 Response: 153485934
 Conc: 2854.12 ng/ml

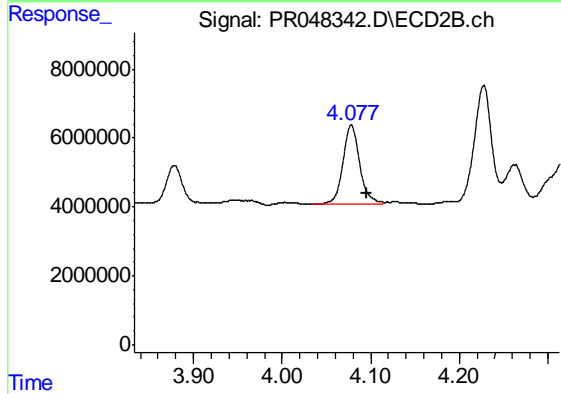
Instrument :
 ECD_R
 ClientSampleId :
 C0BL1



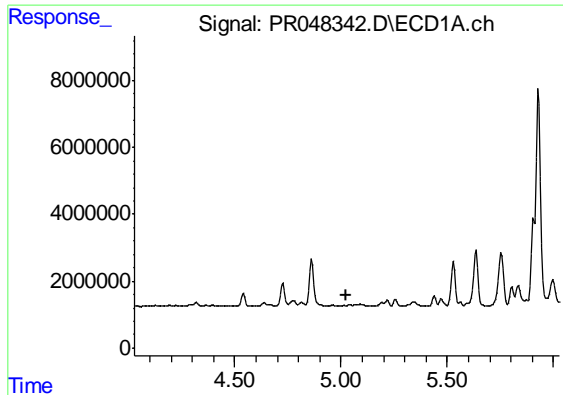
#7 AR-1016-5
 R.T.: 5.422 min
 Delta R.T.: -0.007 min
 Response: 123516657
 Conc: 1686.11 ng/ml



#8 AR-1221-1
 R.T.: 0.000 min
 Exp R.T. : 4.940 min
 Response: 0
 Conc: N.D.



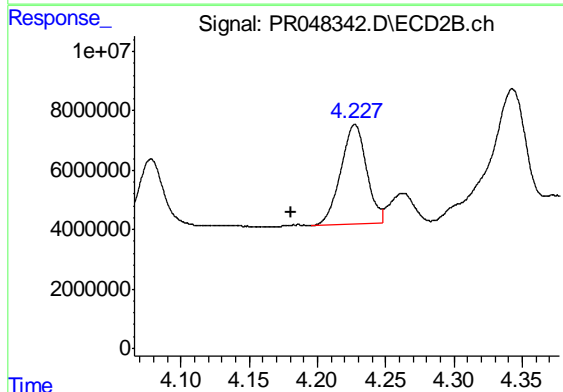
#8 AR-1221-1
 R.T.: 4.078 min
 Delta R.T.: -0.017 min
 Response: 30423631
 Conc: 1030.40 ng/ml



#9 AR-1221-2

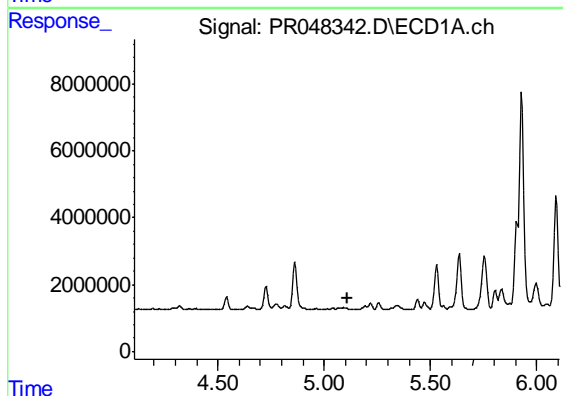
R.T.: 0.000 min
 Exp R.T. : 5.028 min
 Response: 0
 Conc: N.D.

Instrument :
 ECD_R
 ClientSampled :
 C0BL1



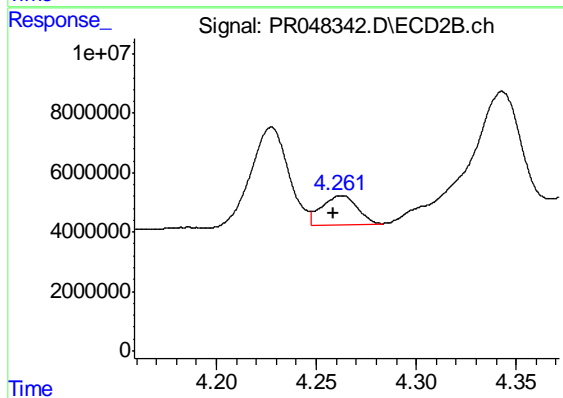
#9 AR-1221-2

R.T.: 4.228 min
 Delta R.T.: 0.046 min
 Response: 43811077
 Conc: 2050.48 ng/ml



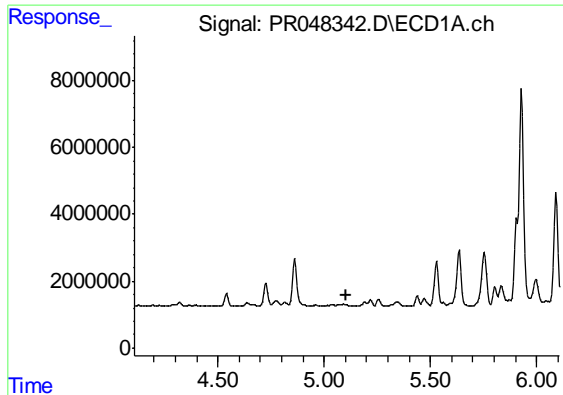
#10 AR-1221-3

R.T.: 0.000 min
 Exp R.T. : 5.107 min
 Response: 0
 Conc: N.D.



#10 AR-1221-3

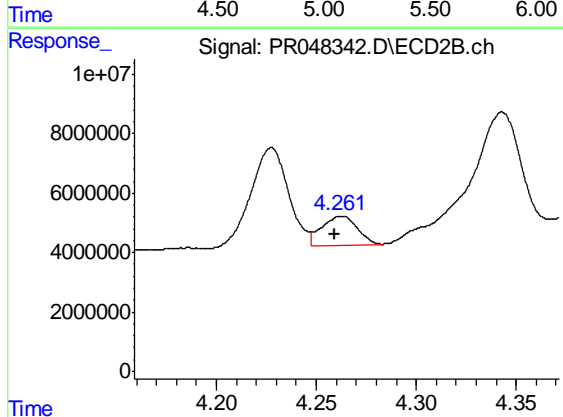
R.T.: 4.262 min
 Delta R.T.: 0.003 min
 Response: 12084551
 Conc: 177.98 ng/ml



#11 AR-1232-1

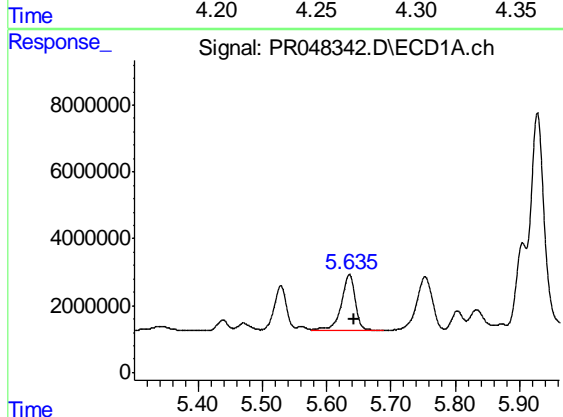
R.T.: 0.000 min
 Exp R.T. : 5.107 min
 Response: 0
 Conc: N.D.

Instrument :
 ECD_R
 ClientSampled :
 C0BL1



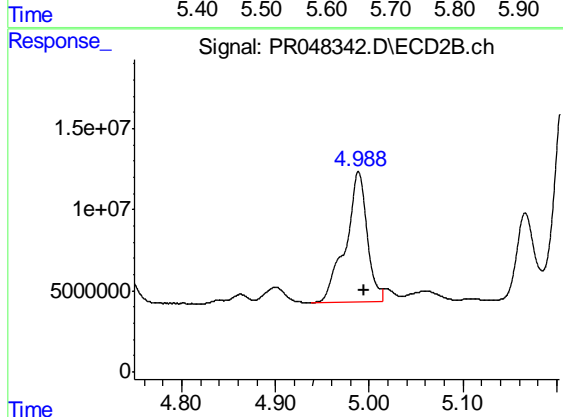
#11 AR-1232-1

R.T.: 4.262 min
 Delta R.T.: 0.003 min
 Response: 12084551
 Conc: 212.14 ng/ml



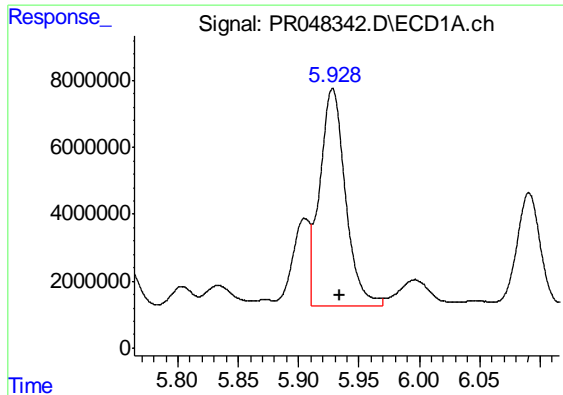
#12 AR-1232-2

R.T.: 5.635 min
 Delta R.T.: -0.008 min
 Response: 26106392
 Conc: 1128.78 ng/ml



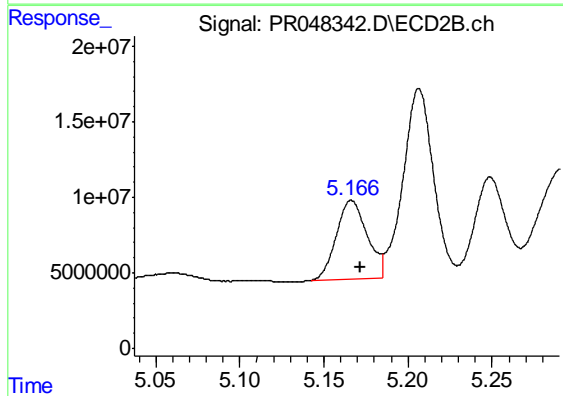
#12 AR-1232-2

R.T.: 4.989 min
 Delta R.T.: -0.006 min
 Response: 126811113
 Conc: 1940.71 ng/ml

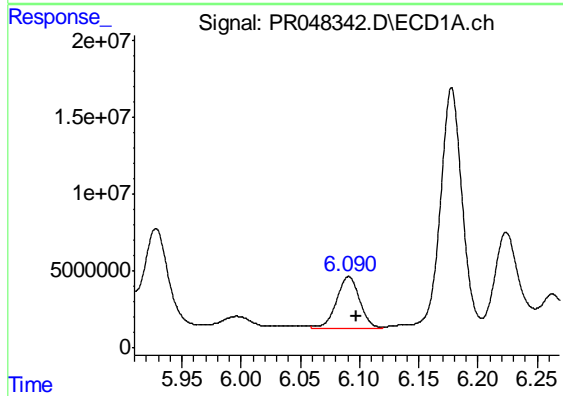


#13 AR-1232-3
 R.T.: 5.928 min
 Delta R.T.: -0.006 min
 Response: 96368503
 Conc: 2022.46 ng/ml

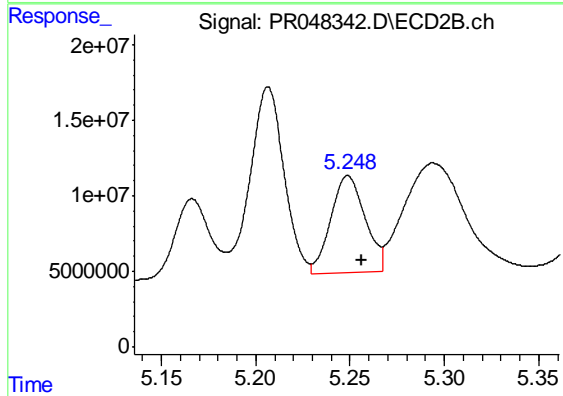
Instrument :
 ECD_R
 ClientSampled :
 C0BL1



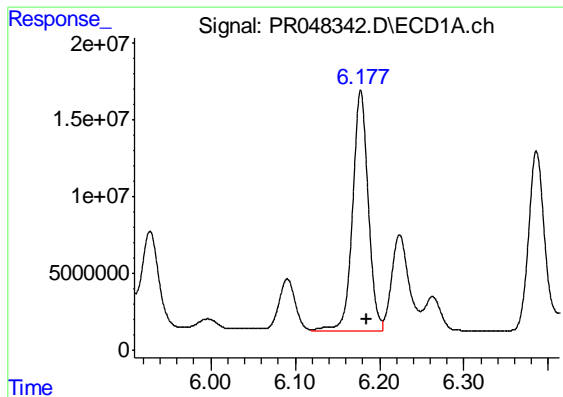
#13 AR-1232-3
 R.T.: 5.166 min
 Delta R.T.: -0.006 min
 Response: 65923928
 Conc: 1892.49 ng/ml



#14 AR-1232-4
 R.T.: 6.091 min
 Delta R.T.: -0.007 min
 Response: 46067887
 Conc: 1915.50 ng/ml

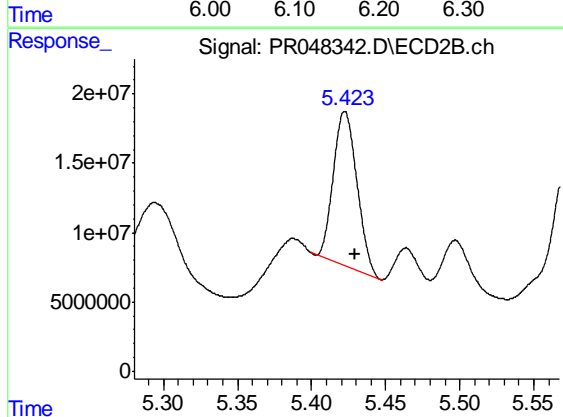


#14 AR-1232-4
 R.T.: 5.249 min
 Delta R.T.: -0.007 min
 Response: 80754724
 Conc: 3404.72 ng/ml

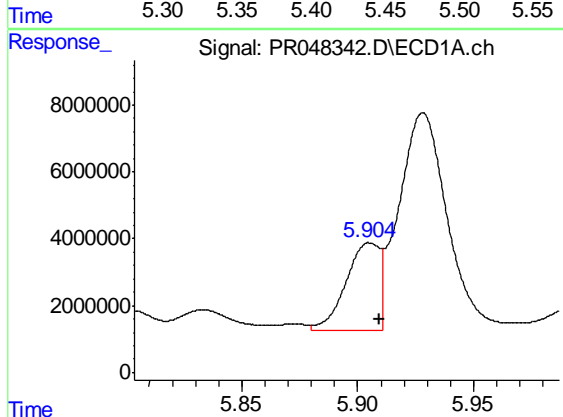


#15 AR-1232-5
 R.T.: 6.178 min
 Delta R.T.: -0.007 min
 Response: 201205192
 Conc: 10651.99 ng/ml

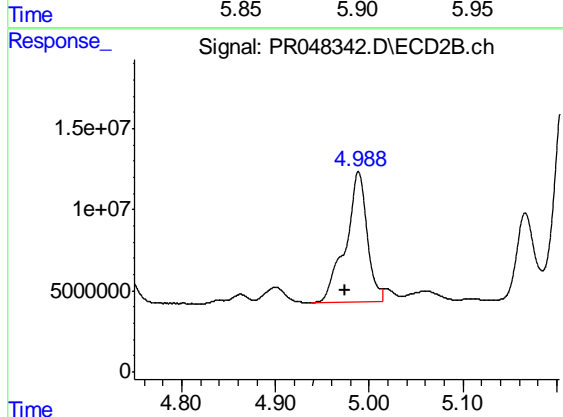
Instrument :
 ECD_R
 ClientSampled :
 C0BL1



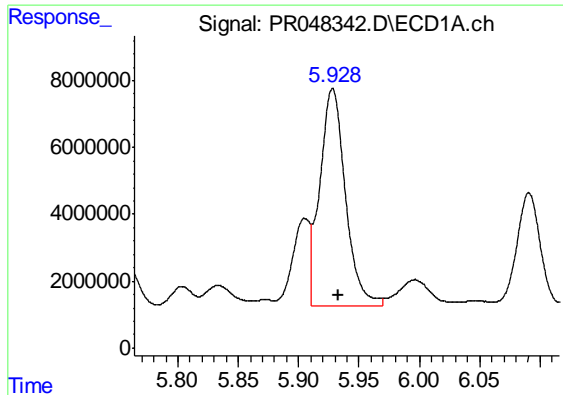
#15 AR-1232-5
 R.T.: 5.422 min
 Delta R.T.: -0.007 min
 Response: 123516657
 Conc: 3859.59 ng/ml



#16 AR-1242-1
 R.T.: 5.905 min
 Delta R.T.: -0.004 min
 Response: 26422130
 Conc: 415.57 ng/ml



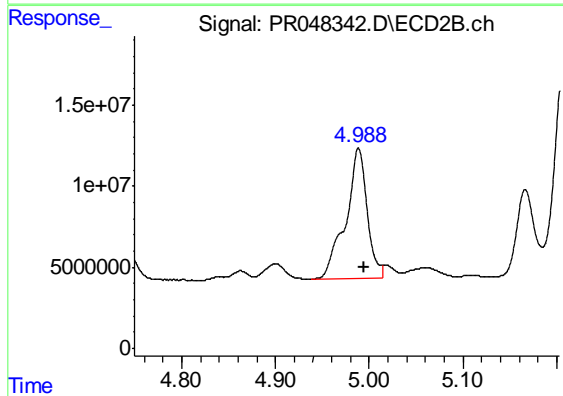
#16 AR-1242-1
 R.T.: 4.989 min
 Delta R.T.: 0.014 min
 Response: 126811113
 Conc: 2064.33 ng/ml



#17 AR-1242-2

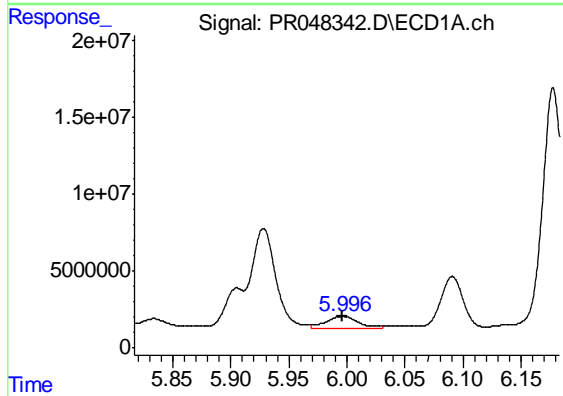
R.T.: 5.928 min
 Delta R.T.: -0.005 min
 Response: 96368503
 Conc: 1082.28 ng/ml

Instrument :
 ECD_R
 ClientSampleId :
 C0BL1



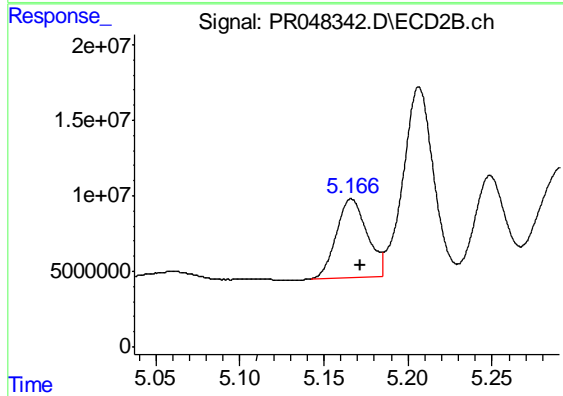
#17 AR-1242-2

R.T.: 4.989 min
 Delta R.T.: -0.006 min
 Response: 126811113
 Conc: 1066.46 ng/ml



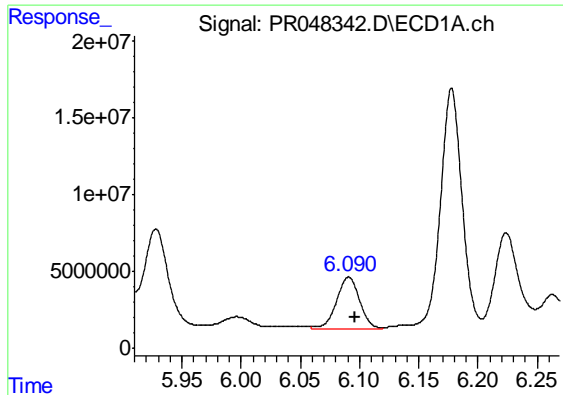
#18 AR-1242-3

R.T.: 5.996 min
 Delta R.T.: 0.000 min
 Response: 15311612
 Conc: 279.87 ng/ml



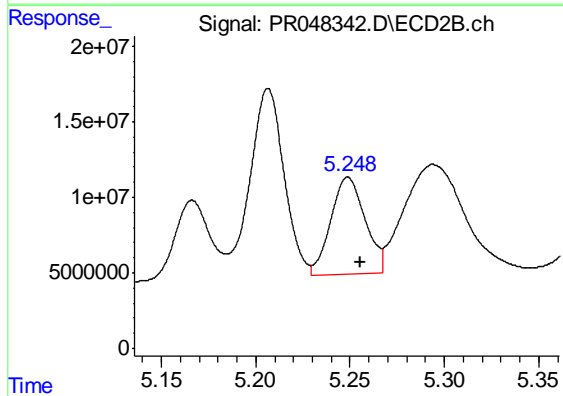
#18 AR-1242-3

R.T.: 5.166 min
 Delta R.T.: -0.005 min
 Response: 65923928
 Conc: 963.31 ng/ml

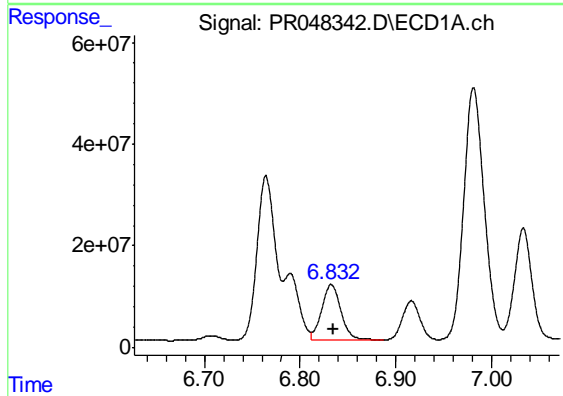


#19 AR-1242-4
 R.T.: 6.091 min
 Delta R.T.: -0.006 min
 Response: 46067887
 Conc: 1026.62 ng/ml

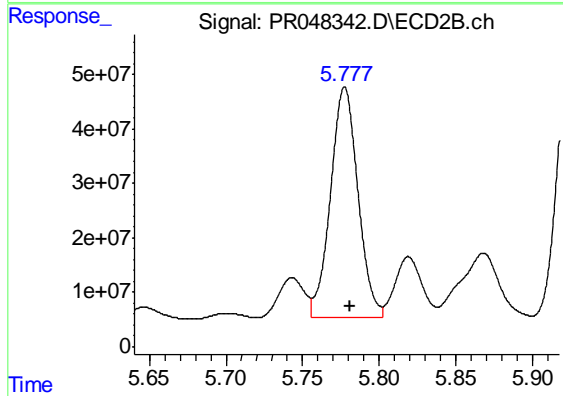
Instrument :
 ECD_R
 ClientSampled :
 C0BL1



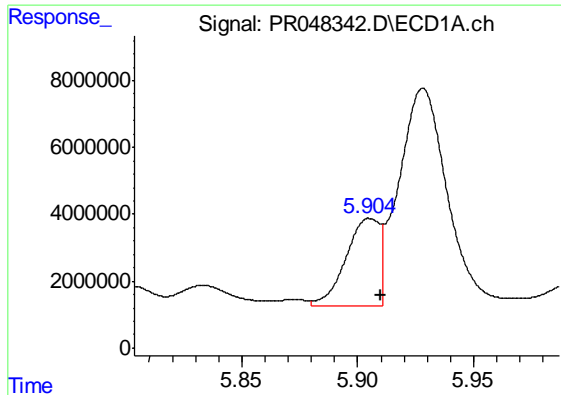
#19 AR-1242-4
 R.T.: 5.249 min
 Delta R.T.: -0.007 min
 Response: 80754724
 Conc: 1626.36 ng/ml



#20 AR-1242-5
 R.T.: 6.833 min
 Delta R.T.: -0.002 min
 Response: 155591327
 Conc: 2920.19 ng/ml



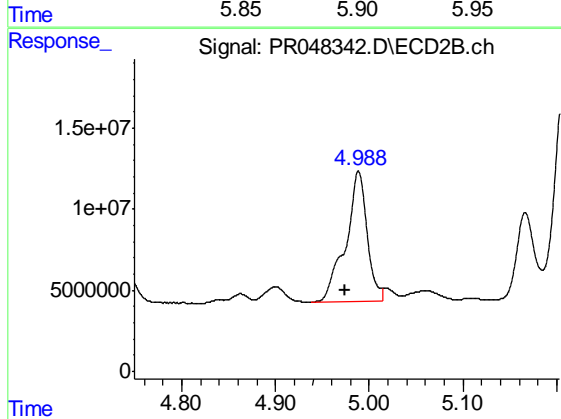
#20 AR-1242-5
 R.T.: 5.777 min
 Delta R.T.: -0.004 min
 Response: 528654362
 Conc: 6187.08 ng/ml



#21 AR-1248-1

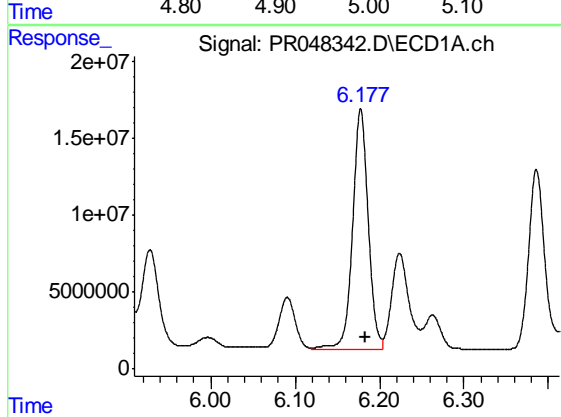
R.T.: 5.905 min
 Delta R.T.: -0.005 min
 Response: 26422130
 Conc: 564.17 ng/ml

Instrument :
 ECD_R
 ClientSampled :
 C0BL1



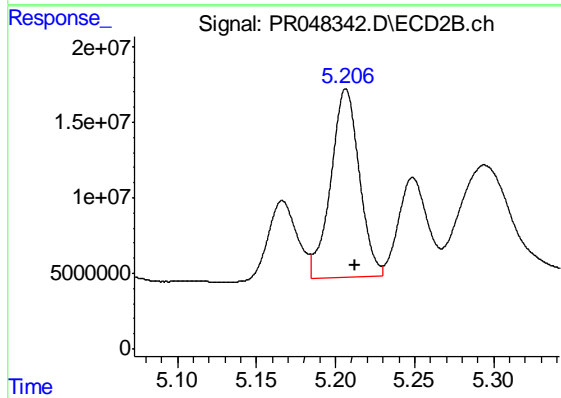
#21 AR-1248-1

R.T.: 4.989 min
 Delta R.T.: 0.014 min
 Response: 126811113
 Conc: 2778.61 ng/ml



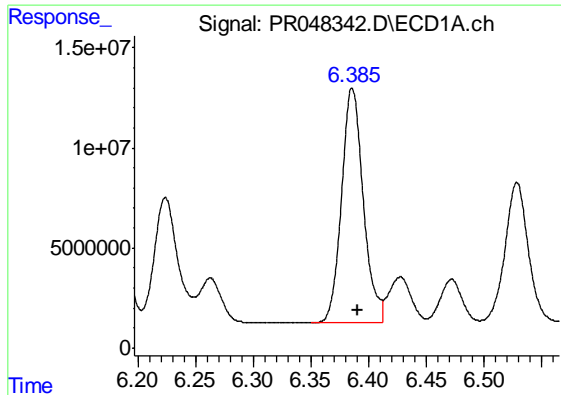
#22 AR-1248-2

R.T.: 6.178 min
 Delta R.T.: -0.005 min
 Response: 201205192
 Conc: 3004.57 ng/ml



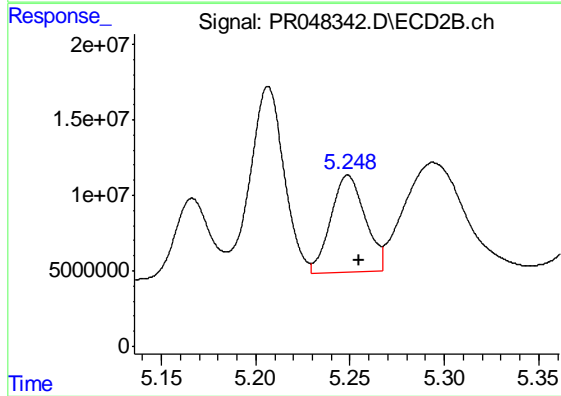
#22 AR-1248-2

R.T.: 5.207 min
 Delta R.T.: -0.006 min
 Response: 155938683
 Conc: 2705.45 ng/ml

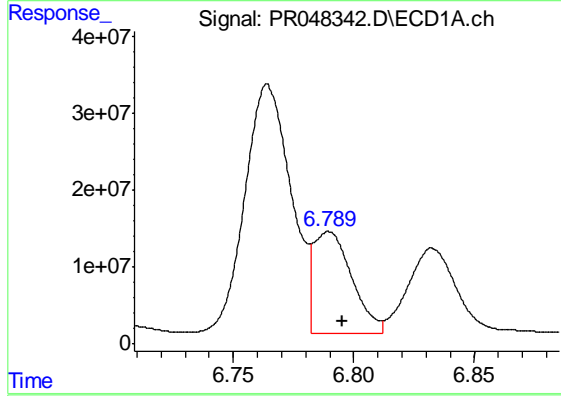


#23 AR-1248-3
 R.T.: 6.386 min
 Delta R.T.: -0.005 min
 Response: 153485934
 Conc: 2065.54 ng/ml

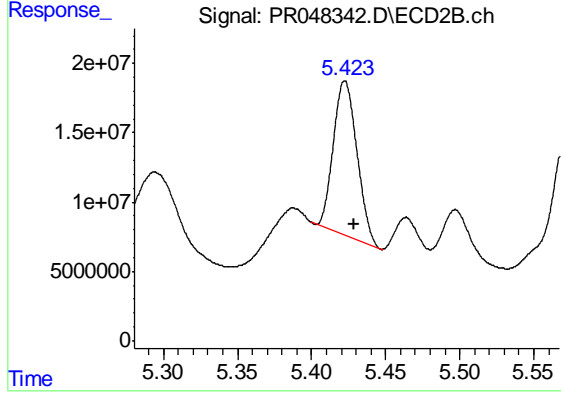
Instrument :
 ECD_R
 ClientSampled :
 C0BL1



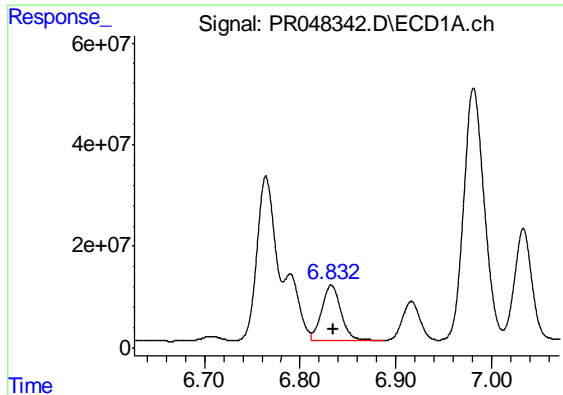
#23 AR-1248-3
 R.T.: 5.249 min
 Delta R.T.: -0.006 min
 Response: 80754724
 Conc: 1137.04 ng/ml



#24 AR-1248-4
 R.T.: 6.790 min
 Delta R.T.: -0.006 min
 Response: 145429145
 Conc: 1614.09 ng/ml

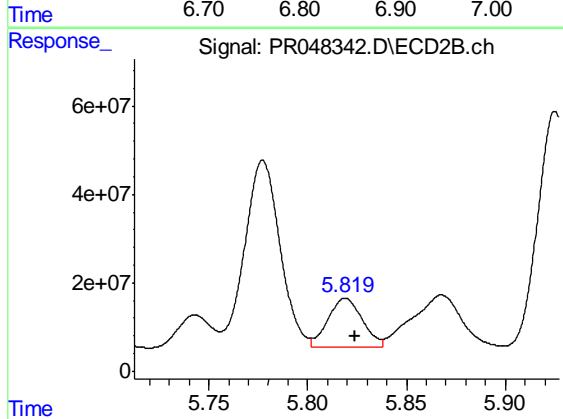


#24 AR-1248-4
 R.T.: 5.422 min
 Delta R.T.: -0.006 min
 Response: 123516657
 Conc: 1253.66 ng/ml

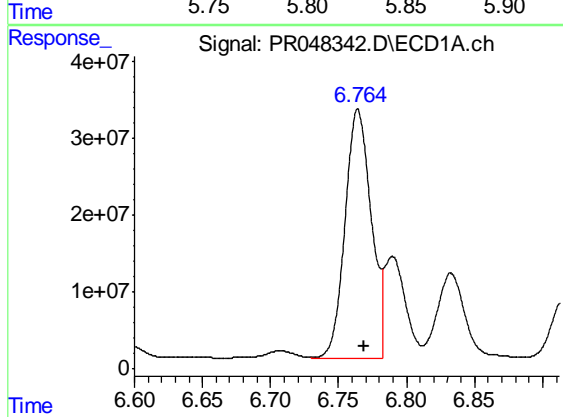


#25 AR-1248-5
 R.T.: 6.833 min
 Delta R.T.: -0.002 min
 Response: 155591327
 Conc: 1801.50 ng/ml

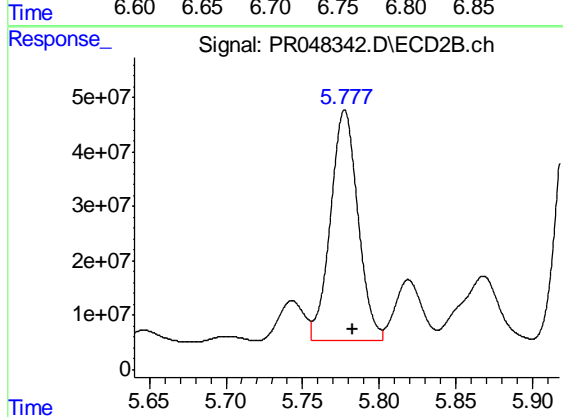
Instrument :
 ECD_R
 ClientSampled :
 C0BL1



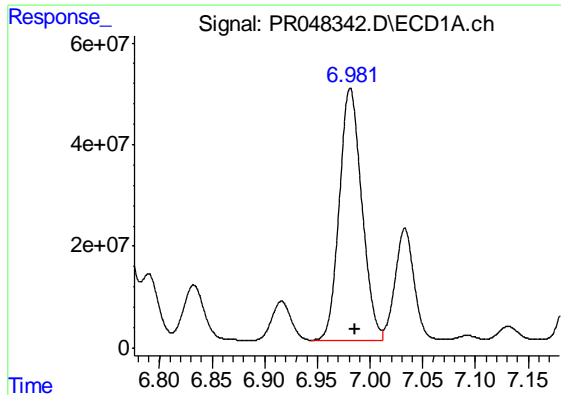
#25 AR-1248-5
 R.T.: 5.819 min
 Delta R.T.: -0.005 min
 Response: 136168224
 Conc: 903.63 ng/ml



#26 AR-1254-1
 R.T.: 6.764 min
 Delta R.T.: -0.004 min
 Response: 432531182
 Conc: 4663.09 ng/ml



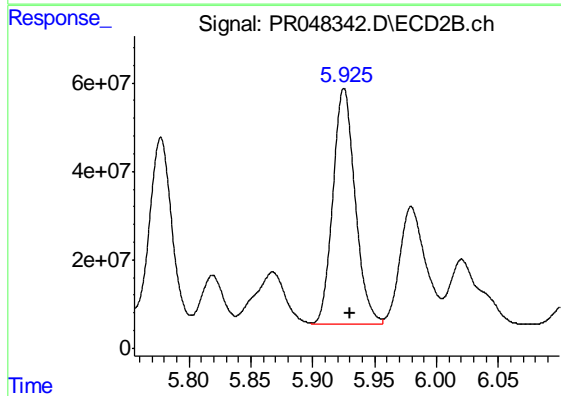
#26 AR-1254-1
 R.T.: 5.777 min
 Delta R.T.: -0.005 min
 Response: 528654362
 Conc: 3295.20 ng/ml



#27 AR-1254-2

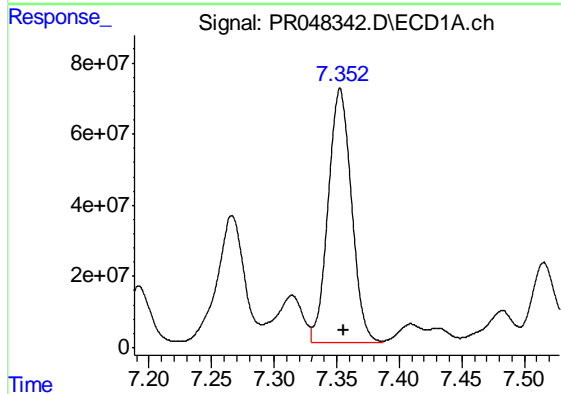
R.T.: 6.981 min
Delta R.T.: -0.005 min
Response: 738160775
Conc: 5123.15 ng/ml

Instrument :
ECD_R
ClientSampled :
C0BL1



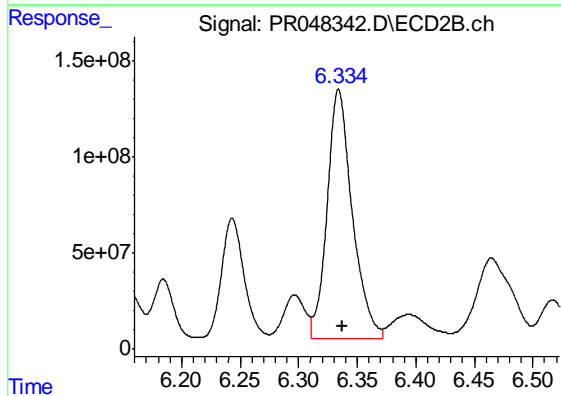
#27 AR-1254-2

R.T.: 5.925 min
Delta R.T.: -0.005 min
Response: 670767779
Conc: 4093.24 ng/ml



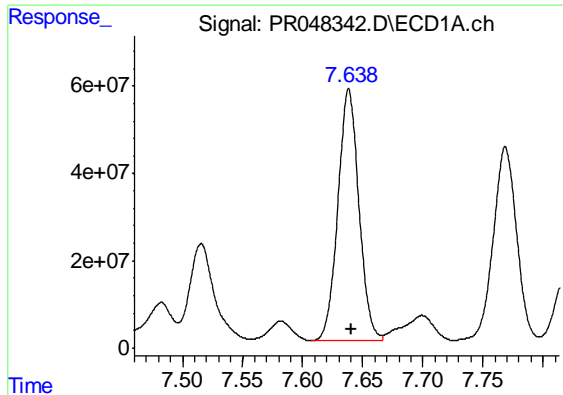
#28 AR-1254-3

R.T.: 7.353 min
Delta R.T.: -0.003 min
Response: 920626726
Conc: 6004.07 ng/ml



#28 AR-1254-3

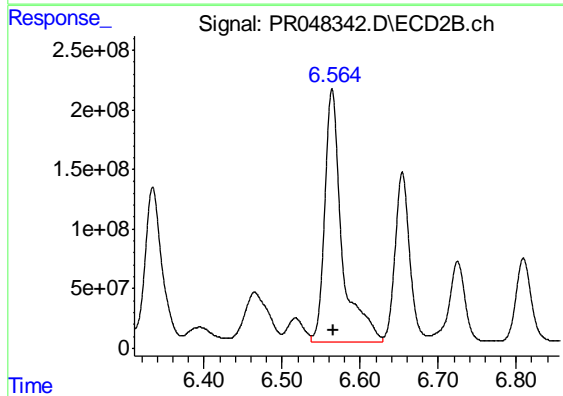
R.T.: 6.334 min
Delta R.T.: -0.003 min
Response: 1934355312
Conc: 5383.71 ng/ml



#29 AR-1254-4

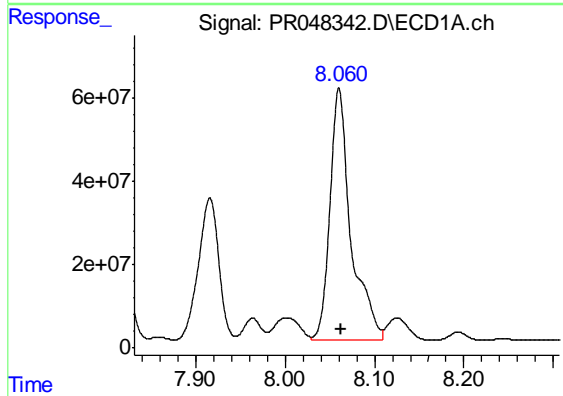
R.T.: 7.638 min
Delta R.T.: -0.003 min
Response: 703267298
Conc: 5930.08 ng/ml

Instrument :
ECD_R
ClientSampleId :
C0BL1



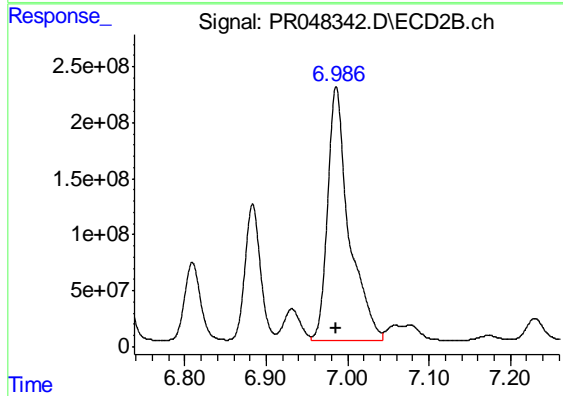
#29 AR-1254-4

R.T.: 6.564 min
Delta R.T.: -0.002 min
Response: 3255090780
Conc: 6777.94 ng/ml



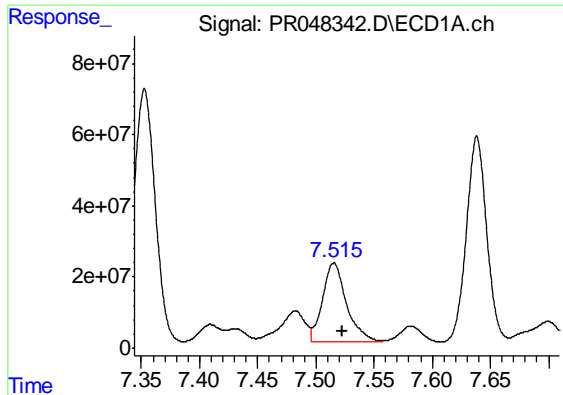
#30 AR-1254-5

R.T.: 8.060 min
Delta R.T.: -0.002 min
Response: 987612139
Conc: 7755.84 ng/ml



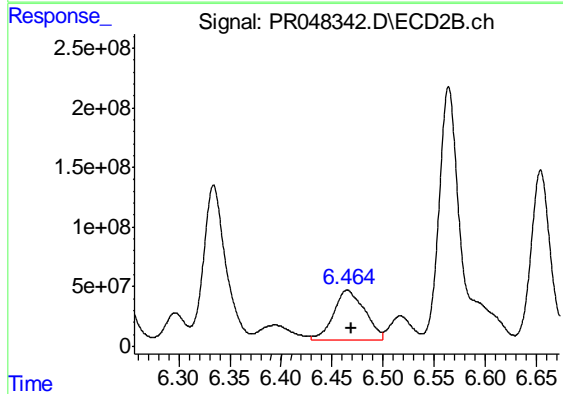
#30 AR-1254-5

R.T.: 6.986 min
Delta R.T.: 0.000 min
Response: 4129047917
Conc: 6636.96 ng/ml

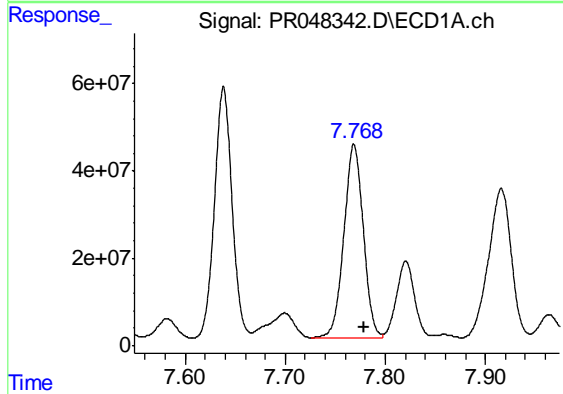


#31 AR-1260-1
 R.T.: 7.516 min
 Delta R.T.: -0.007 min
 Response: 322037536
 Conc: 3138.79 ng/ml

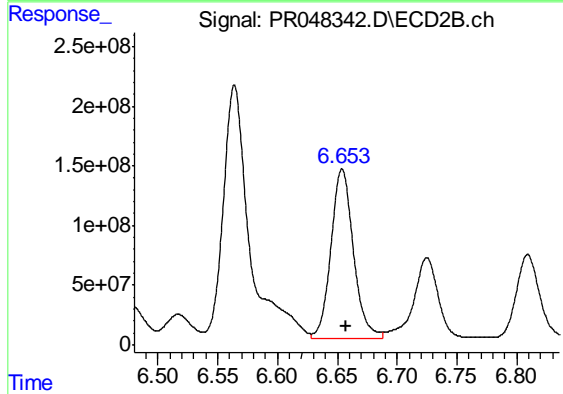
Instrument :
 ECD_R
 ClientSampled :
 C0BL1



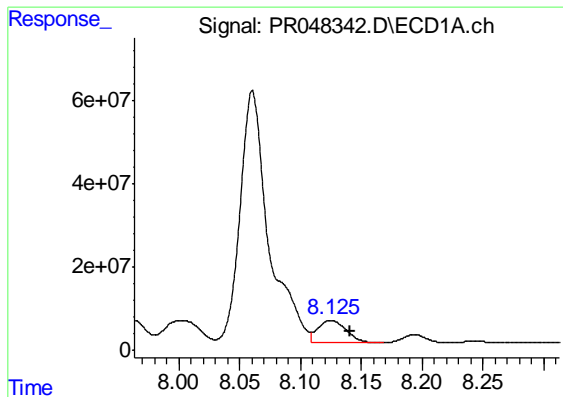
#31 AR-1260-1
 R.T.: 6.465 min
 Delta R.T.: -0.005 min
 Response: 876037136
 Conc: 4941.58 ng/ml



#32 AR-1260-2
 R.T.: 7.769 min
 Delta R.T.: -0.010 min
 Response: 600615147
 Conc: 4733.74 ng/ml



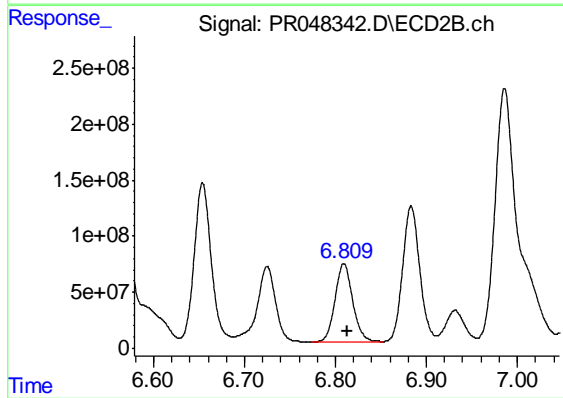
#32 AR-1260-2
 R.T.: 6.654 min
 Delta R.T.: -0.004 min
 Response: 1850022363
 Conc: 3073.03 ng/ml



#33 AR-1260-3

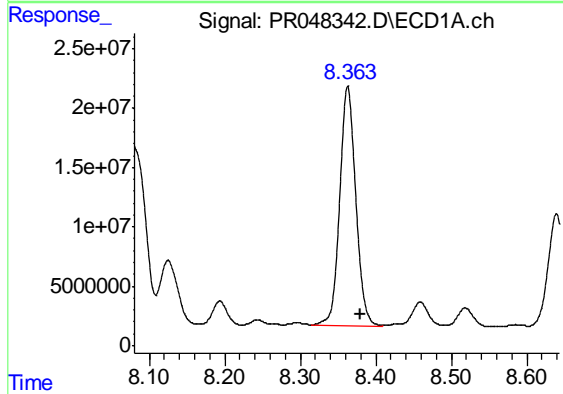
R.T.: 8.125 min
Delta R.T.: -0.016 min
Response: 86202204
Conc: 890.37 ng/ml

Instrument :
ECD_R
ClientSampled :
C0BL1



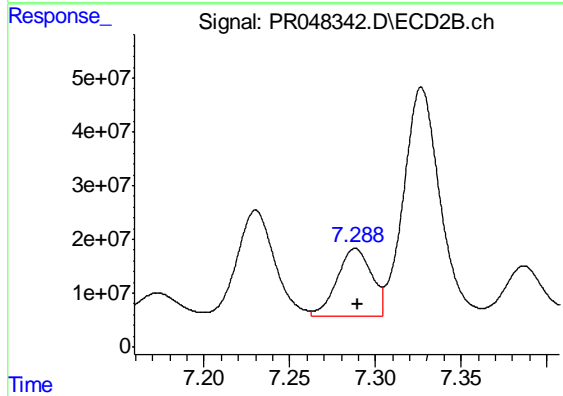
#33 AR-1260-3

R.T.: 6.809 min
Delta R.T.: -0.004 min
Response: 949916345
Conc: 2568.02 ng/ml



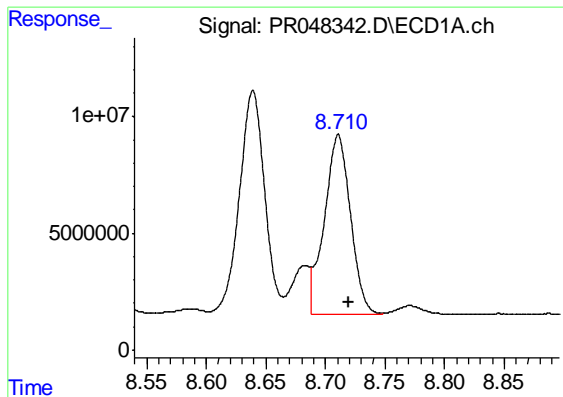
#34 AR-1260-4

R.T.: 8.363 min
Delta R.T.: -0.017 min
Response: 297854905
Conc: 2722.13 ng/ml



#34 AR-1260-4

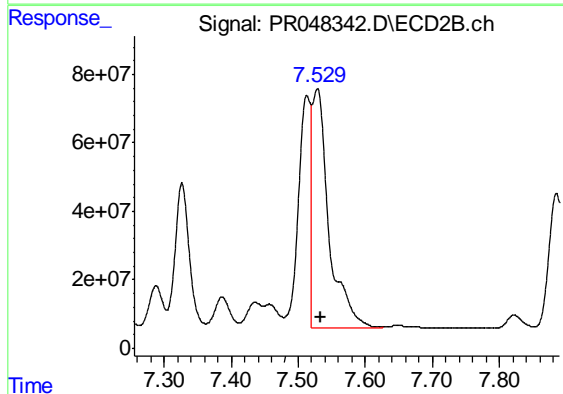
R.T.: 7.288 min
Delta R.T.: -0.002 min
Response: 175989859
Conc: 388.79 ng/ml



#35 AR-1260-5

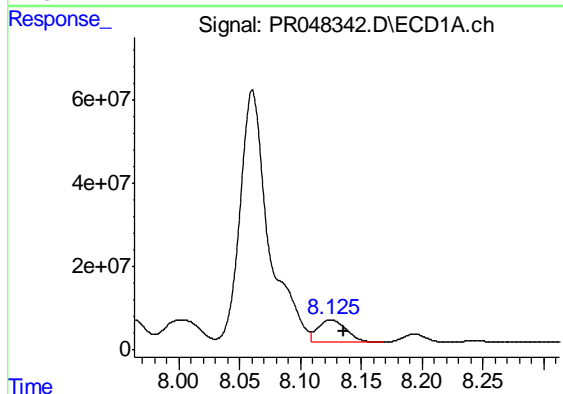
R.T.: 8.711 min
 Delta R.T.: -0.008 min
 Response: 116580482
 Conc: 513.01 ng/ml

Instrument :
 ECD_R
 ClientSampled :
 C0BL1



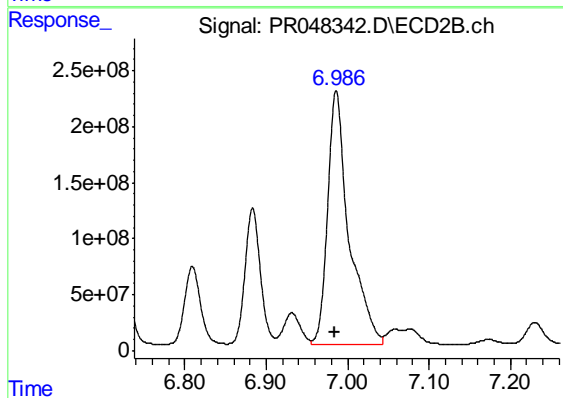
#35 AR-1260-5

R.T.: 7.529 min
 Delta R.T.: -0.004 min
 Response: 1221469356
 Conc: 648.35 ng/ml



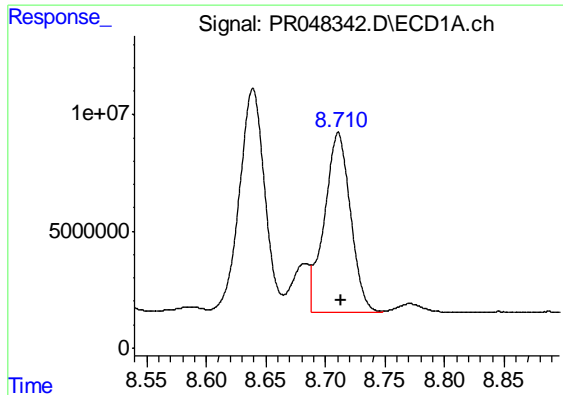
#36 AR-1262-1

R.T.: 8.125 min
 Delta R.T.: -0.010 min
 Response: 86202204
 Conc: 613.10 ng/ml



#36 AR-1262-1

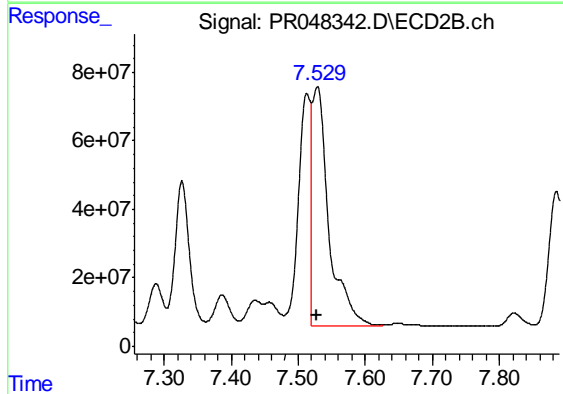
R.T.: 6.986 min
 Delta R.T.: 0.002 min
 Response: 4129047917
 Conc: 12849.17 ng/ml



#37 AR-1262-2

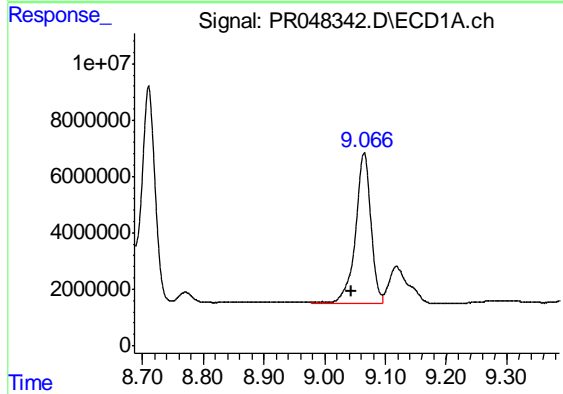
R.T.: 8.711 min
 Delta R.T.: -0.002 min
 Response: 116580482
 Conc: 462.26 ng/ml

Instrument :
 ECD_R
 ClientSampleId :
 C0BL1



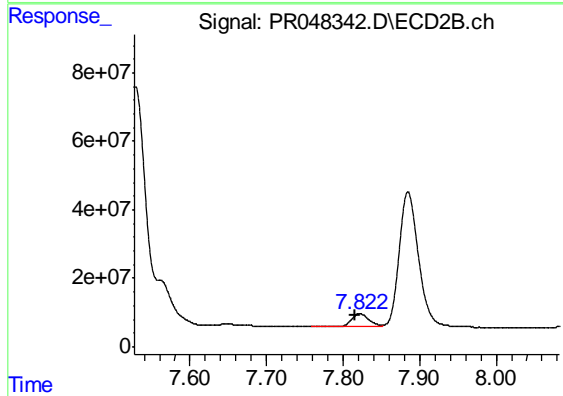
#37 AR-1262-2

R.T.: 7.529 min
 Delta R.T.: 0.000 min
 Response: 1221469356
 Conc: 587.54 ng/ml



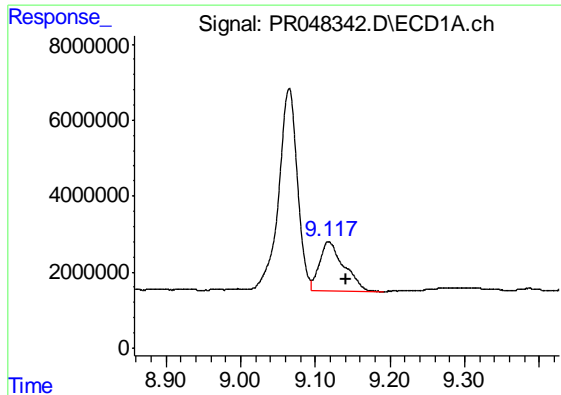
#38 AR-1262-3

R.T.: 9.065 min
 Delta R.T.: 0.021 min
 Response: 93472390
 Conc: 536.80 ng/ml



#38 AR-1262-3

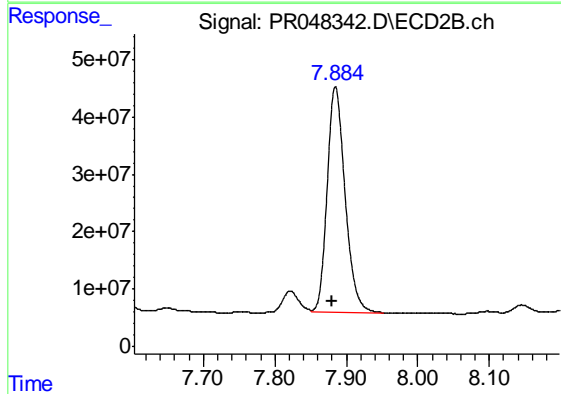
R.T.: 7.822 min
 Delta R.T.: 0.006 min
 Response: 57524559
 Conc: 69.68 ng/ml



#39 AR-1262-4

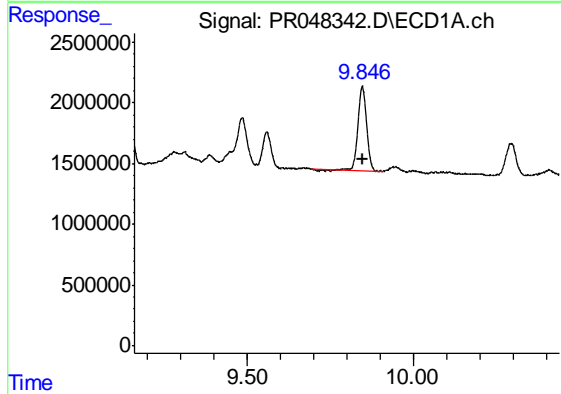
R.T.: 9.118 min
 Delta R.T.: -0.024 min
 Response: 29517134
 Conc: 223.22 ng/ml

Instrument :
 ECD_R
 ClientSampled :
 C0BL1



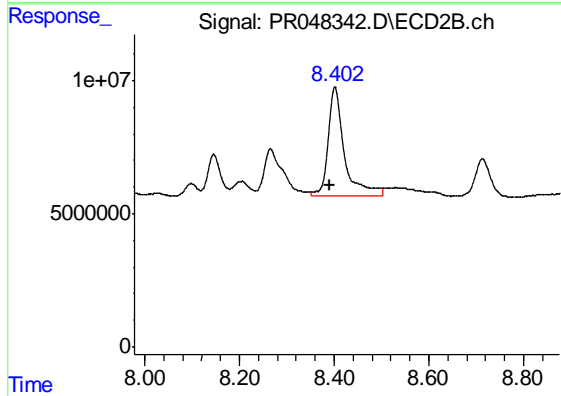
#39 AR-1262-4

R.T.: 7.885 min
 Delta R.T.: 0.005 min
 Response: 685523156
 Conc: 512.06 ng/ml



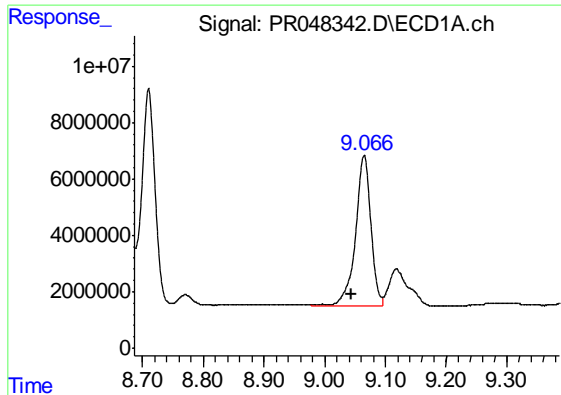
#40 AR-1262-5

R.T.: 9.847 min
 Delta R.T.: -0.003 min
 Response: 12801872
 Conc: 133.54 ng/ml



#40 AR-1262-5

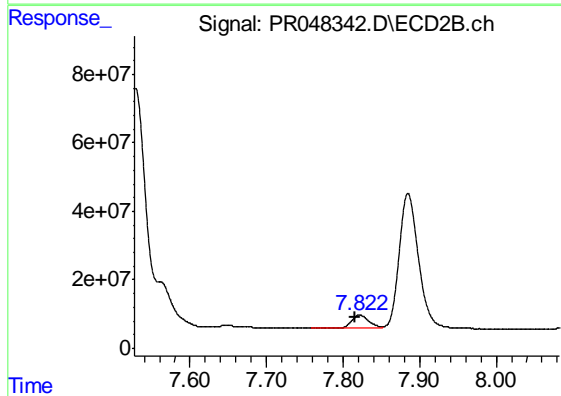
R.T.: 8.402 min
 Delta R.T.: 0.011 min
 Response: 99206030
 Conc: 156.19 ng/ml



#41 AR-1268-1

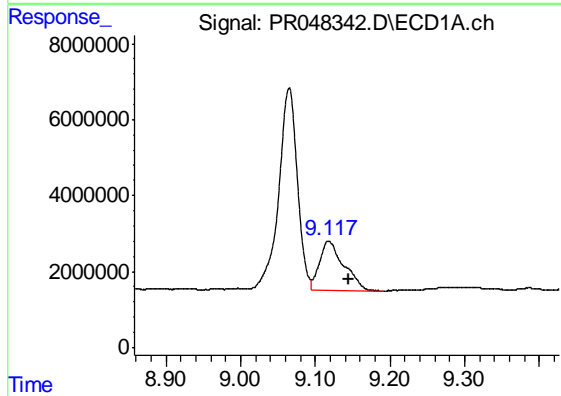
R.T.: 9.065 min
 Delta R.T.: 0.022 min
 Response: 93472390
 Conc: 307.33 ng/ml

Instrument :
 ECD_R
 ClientSampleId :
 C0BL1



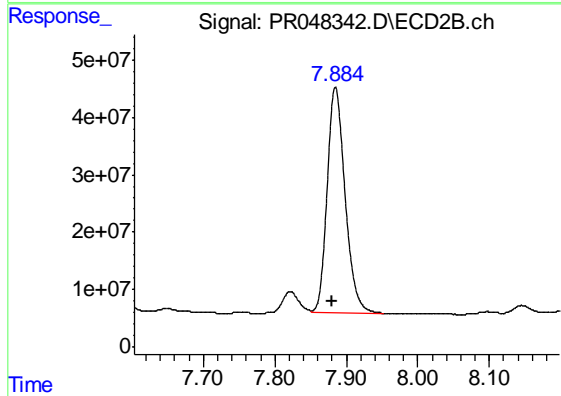
#41 AR-1268-1

R.T.: 7.822 min
 Delta R.T.: 0.006 min
 Response: 57524559
 Conc: 23.16 ng/ml



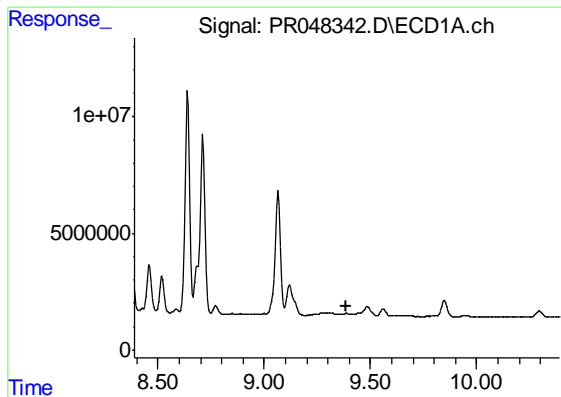
#42 AR-1268-2

R.T.: 9.118 min
 Delta R.T.: -0.027 min
 Response: 29517134
 Conc: 104.89 ng/ml



#42 AR-1268-2

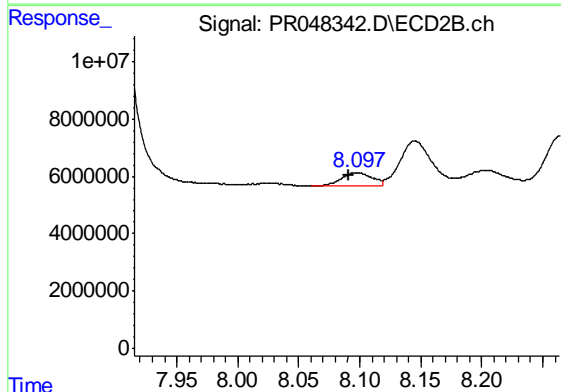
R.T.: 7.885 min
 Delta R.T.: 0.004 min
 Response: 685523156
 Conc: 328.12 ng/ml



#43 AR-1268-3

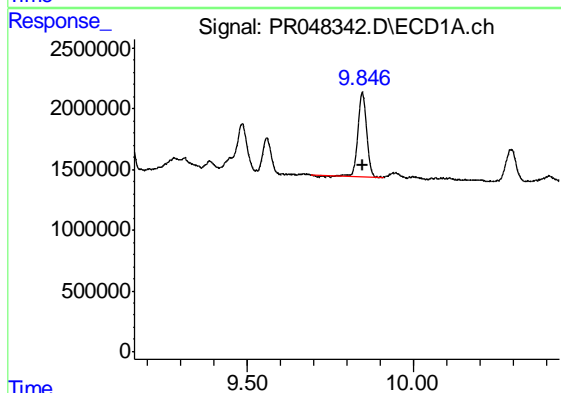
R.T.: 0.000 min
 Exp R.T. : 9.390 min
 Response: 0
 Conc: N.D.

Instrument :
 ECD_R
 ClientSampleId :
 C0BL1



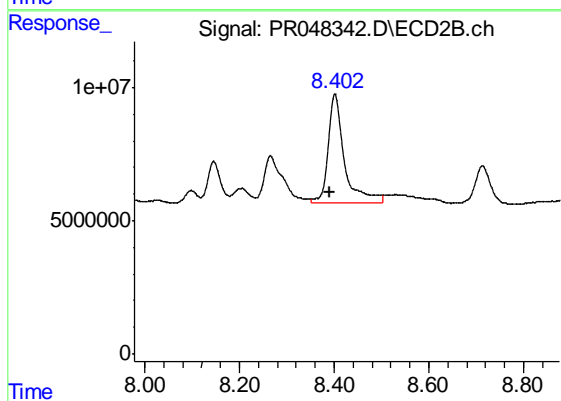
#43 AR-1268-3

R.T.: 8.097 min
 Delta R.T.: 0.006 min
 Response: 8526045
 Conc: 4.57 ng/ml



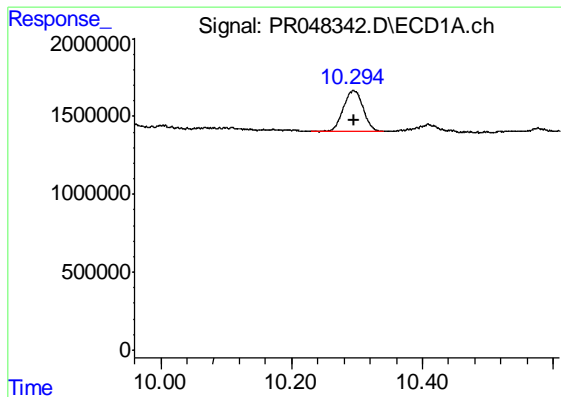
#44 AR-1268-4

R.T.: 9.847 min
 Delta R.T.: -0.002 min
 Response: 12801872
 Conc: 117.72 ng/ml



#44 AR-1268-4

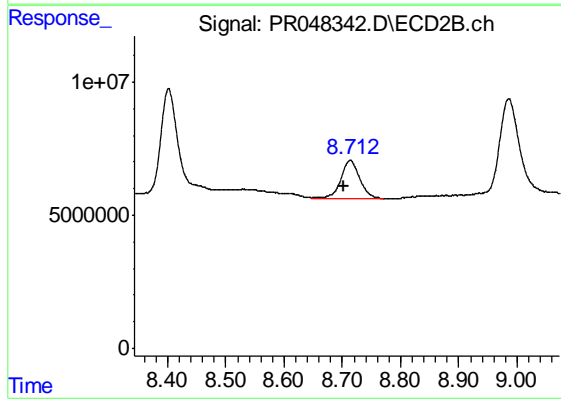
R.T.: 8.402 min
 Delta R.T.: 0.010 min
 Response: 99206030
 Conc: 136.07 ng/ml



#45 AR-1268-5

R.T.: 10.294 min
Delta R.T.: -0.002 min
Response: 5497233
Conc: 7.01 ng/ml

Instrument :
ECD_R
ClientSampleId :
C0BL1



#45 AR-1268-5

R.T.: 8.713 min
Delta R.T.: 0.012 min
Response: 31138538
Conc: 5.77 ng/ml