

Data Path : \\74.0.250.170\Terastorage\pestpcbsrv\HPCHEM1\ECD_R\Data\PR102918\
 Data File : PR033368.D
 Signal(s) : Signal #1: ECD1A.ch Signal #2: ECD2B.ch
 Acq On : 29 Oct 2018 18:35
 Operator : SM\SJ
 Sample : I.BLK
 Misc :
 ALS Vial : 2 Sample Multiplier: 1

Instrument :
 ECD_R
 ClientSampleId :
 I.BLK

Integration File signal 1: autoint1.e
 Integration File signal 2: autoint2.e
 Quant Time: Oct 30 01:00:28 2018
 Quant Method : Z:\pestpcbsrv\HPCHEM1\ECD_R\Method\PR102818.M
 Quant Title : GC EXTRACTABLES
 QLast Update : Mon Oct 29 02:03:30 2018
 Response via : Initial Calibration
 Integrator: ChemStation

Volume Inj. : 2 µl
 Signal #1 Phase : ZB-MR1 Signal #2 Phase: ZB-MR2
 Signal #1 Info : 30Mx0.32mmx 0.50µ Signal #2 Info : 30M x 0.32mm x 0.25µm

Compound	RT#1	RT#2	Resp#1	Resp#2	ng/ml	ng/ml
----------	------	------	--------	--------	-------	-------

 System Monitoring Compounds

1) SA Tetrachlo...	4.758	3.738	403.7E6	1511.6E6	23.281	23.121
2) SA Decachlor...	10.748	8.731	344.9E6	740.9E6	21.595	19.476

Target Compounds

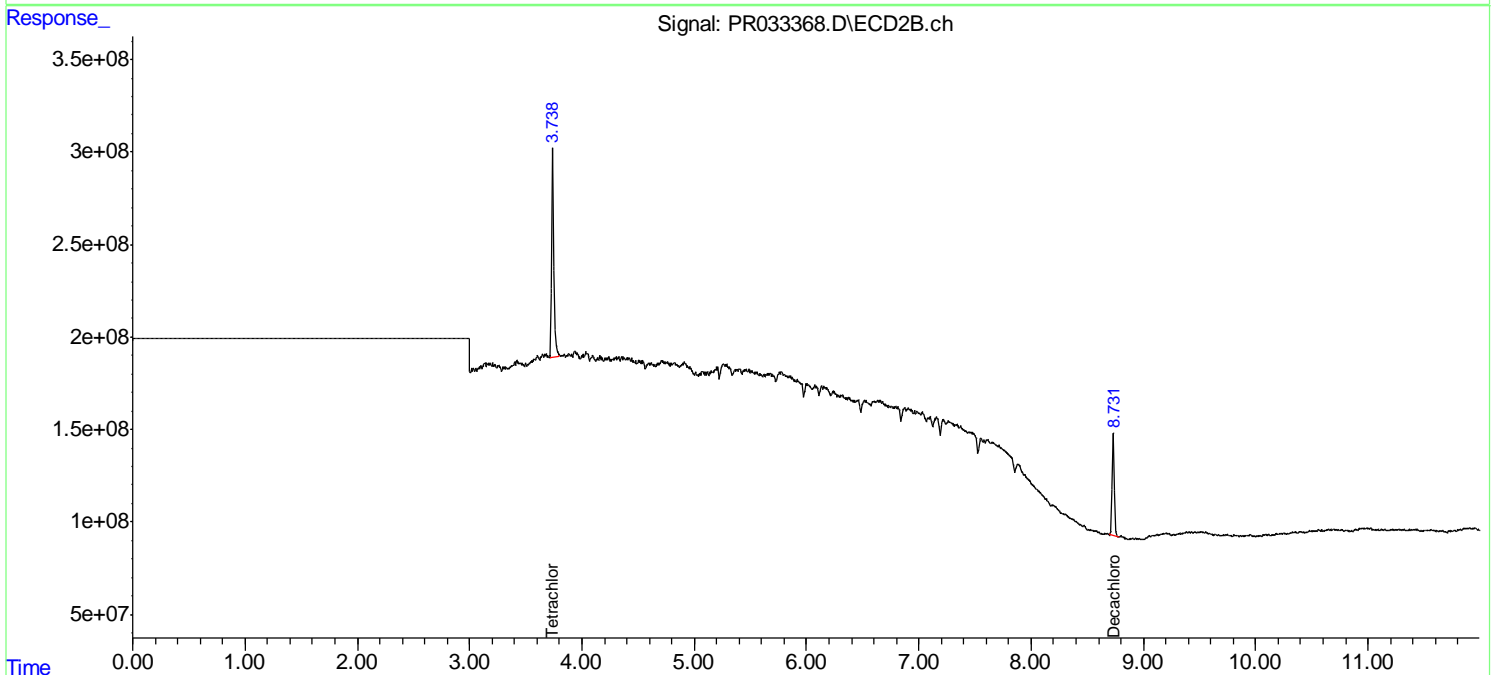
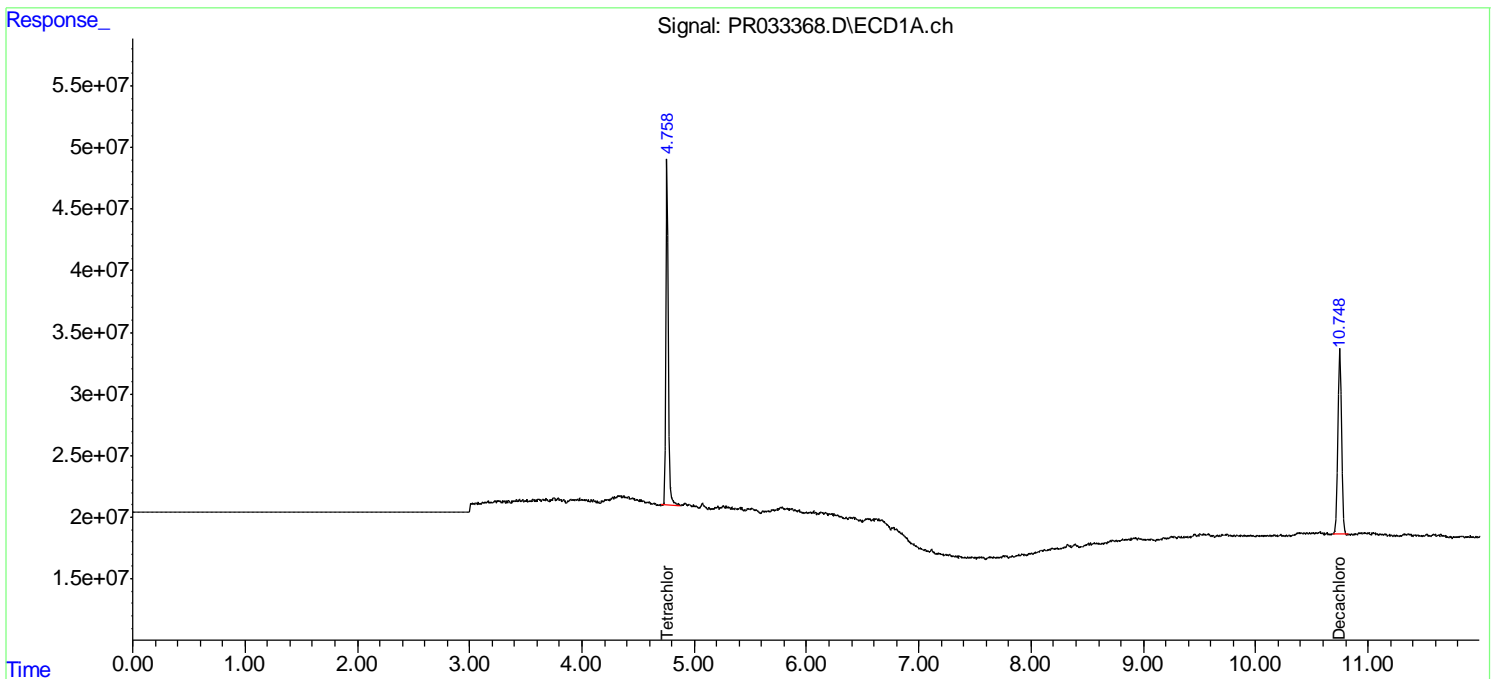
(f)=RT Delta > 1/2 Window (#)=Amounts differ by > 25% (m)=manual int.

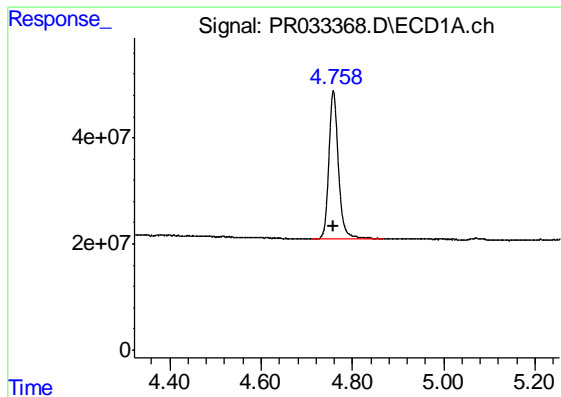
Data Path : \\74.0.250.170\Terastorage\pestpcbsrv\HPCHEM1\ECD_R\Data\PR102918\
 Data File : PR033368.D
 Signal(s) : Signal #1: ECD1A.ch Signal #2: ECD2B.ch
 Acq On : 29 Oct 2018 18:35
 Operator : SM\SJ
 Sample : I.BLK
 Misc :
 ALS Vial : 2 Sample Multiplier: 1

Instrument :
 ECD_R
 ClientSampled :
 I.BLK

Integration File signal 1: autoint1.e
 Integration File signal 2: autoint2.e
 Quant Time: Oct 30 01:00:28 2018
 Quant Method : Z:\pestpcbsrv\HPCHEM1\ECD_R\Method\PR102818.M
 Quant Title : GC EXTRACTABLES
 QLast Update : Mon Oct 29 02:03:30 2018
 Response via : Initial Calibration
 Integrator: ChemStation

Volume Inj. : 2 µl
 Signal #1 Phase : ZB-MR1 Signal #2 Phase: ZB-MR2
 Signal #1 Info : 30Mx0.32mmx 0.50µ Signal #2 Info : 30M x 0.32mm x 0.25µm

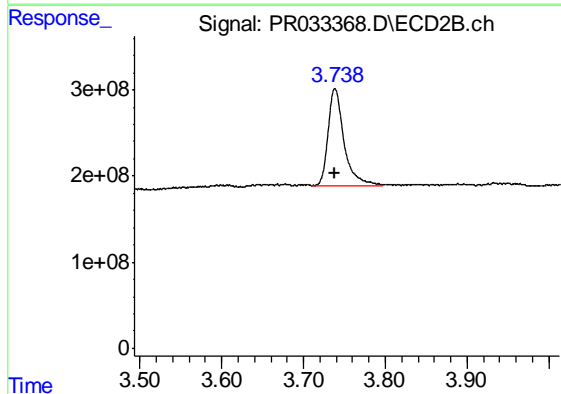




#1 Tetrachloro-m-xylene

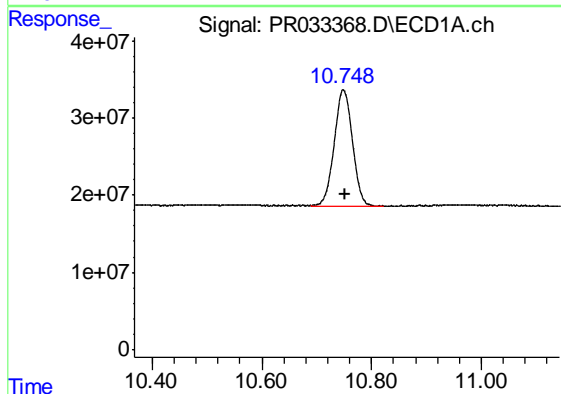
R.T.: 4.758 min
 Delta R.T.: 0.000 min
 Response: 403728340
 Conc: 23.28 ng/ml

Instrument :
 ECD_R
 ClientSampled :
 I.BLK



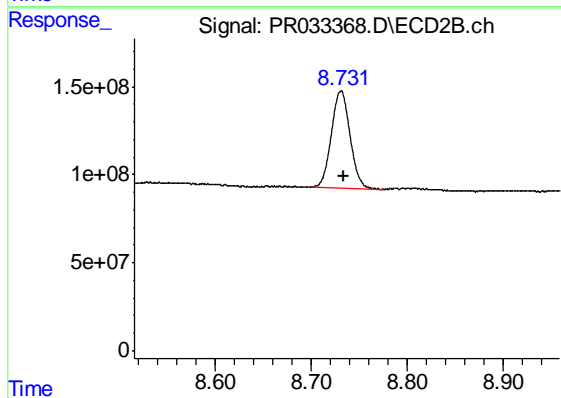
#1 Tetrachloro-m-xylene

R.T.: 3.738 min
 Delta R.T.: 0.000 min
 Response: 1511575318
 Conc: 23.12 ng/ml



#2 Decachlorobiphenyl

R.T.: 10.748 min
 Delta R.T.: -0.003 min
 Response: 344884157
 Conc: 21.60 ng/ml



#2 Decachlorobiphenyl

R.T.: 8.731 min
 Delta R.T.: -0.003 min
 Response: 740852036
 Conc: 19.48 ng/ml