

Data Path : \\74.0.250.170\Terastorage\pestpcbsrv\HPCHEM1\ECD_R\Data\PR102918\
 Data File : PR033371.D
 Signal(s) : Signal #1: ECD1A.ch Signal #2: ECD2B.ch
 Acq On : 29 Oct 2018 19:18
 Operator : SM\SJ
 Sample : PB114251BS
 Misc :
 ALS Vial : 27 Sample Multiplier: 1

Instrument :
 ECD_R
ClientSampled :
 PB114251BS

Manual Integrations
APPROVED
 Sohil
 10/30/2018 4:18:43 PM

Integration File signal 1: autoint1.e
 Integration File signal 2: autoint2.e
 Quant Time: Oct 30 01:03:25 2018
 Quant Method : Z:\pestpcbsrv\HPCHEM1\ECD_R\Method\PR102818.M
 Quant Title : GC EXTRACTABLES
 QLast Update : Mon Oct 29 02:03:30 2018
 Response via : Initial Calibration
 Integrator: ChemStation

Volume Inj. : 2 µl
 Signal #1 Phase : ZB-MR1 Signal #2 Phase: ZB-MR2
 Signal #1 Info : 30Mx0.32mmx 0.50µ Signal #2 Info : 30M x 0.32mm x 0.25µm

Compound	RT#1	RT#2	Resp#1	Resp#2	ng/ml	ng/ml

System Monitoring Compounds						
1) SA Tetrachlo...	4.759	3.739	377.7E6	1430.4E6	21.779m	21.880
2) SA Decachlor...	10.751	8.731	262.5E6	561.5E6	16.434	14.761
Target Compounds						
3) L1 AR-1016-1	5.944	4.823	42467953	175.2E6	64.332m	77.088
4) L1 AR-1016-2	5.967	4.840	48824604	189.9E6	50.595m	54.418
5) L1 AR-1016-3	6.029	5.015	33504793	83537782	57.302	48.435
6) L1 AR-1016-4	6.130	5.056	27418454	157.6E6	57.449	114.311 #
7) L1 AR-1016-5	6.423	5.269	24599451	123.2E6	52.104m	68.460m#
31) L7 AR-1260-1	7.558	6.295	35003265	159.0E6	36.551	52.280m#
32) L7 AR-1260-2	7.816	6.479	43292796	107.6E6	38.473	30.014m
33) L7 AR-1260-3	8.182	6.634	25871461	161.1E6	30.476m	47.942m#
34) L7 AR-1260-4	8.422	7.144	34840505	178.5E6	35.560m	68.685m#
35) L7 AR-1260-5	8.767	7.342	71878327	250.0E6	36.578m	38.193m

(f)=RT Delta > 1/2 Window (#)=Amounts differ by > 25% (m)=manual int.

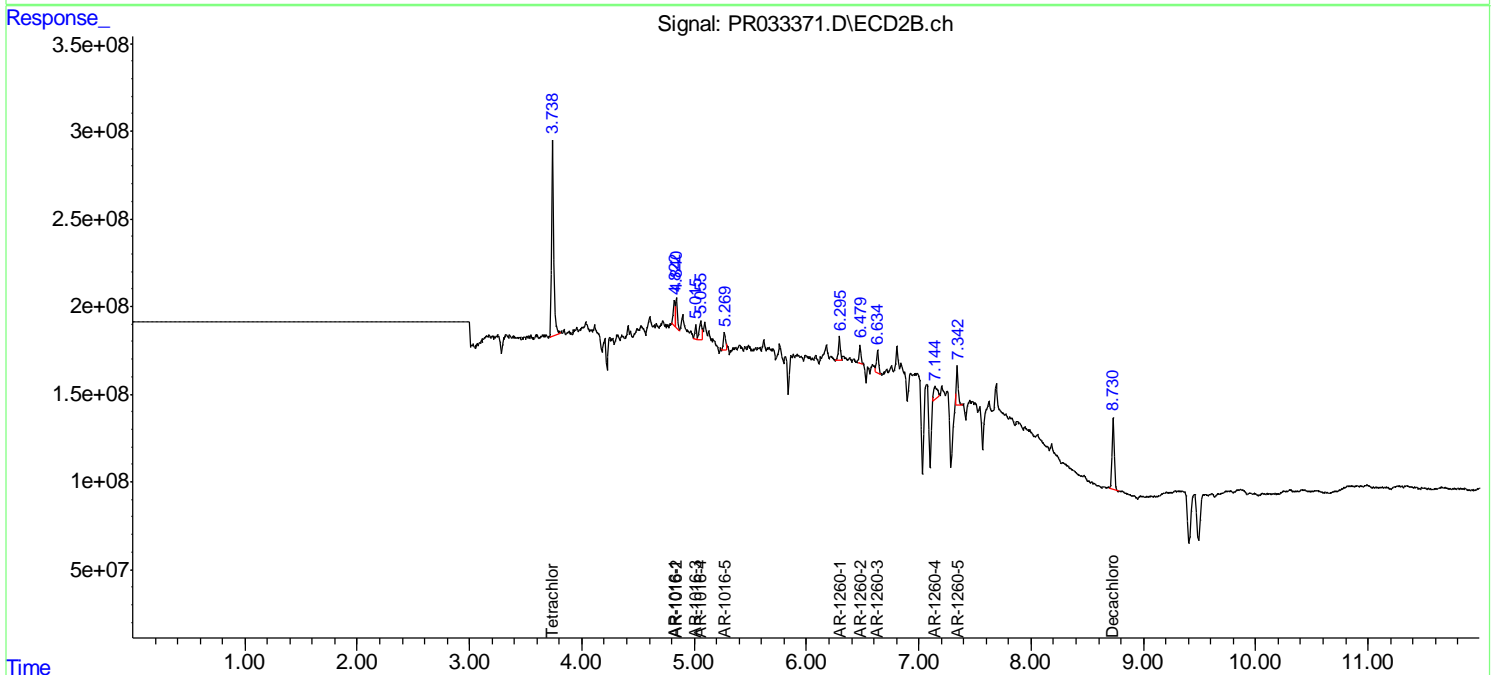
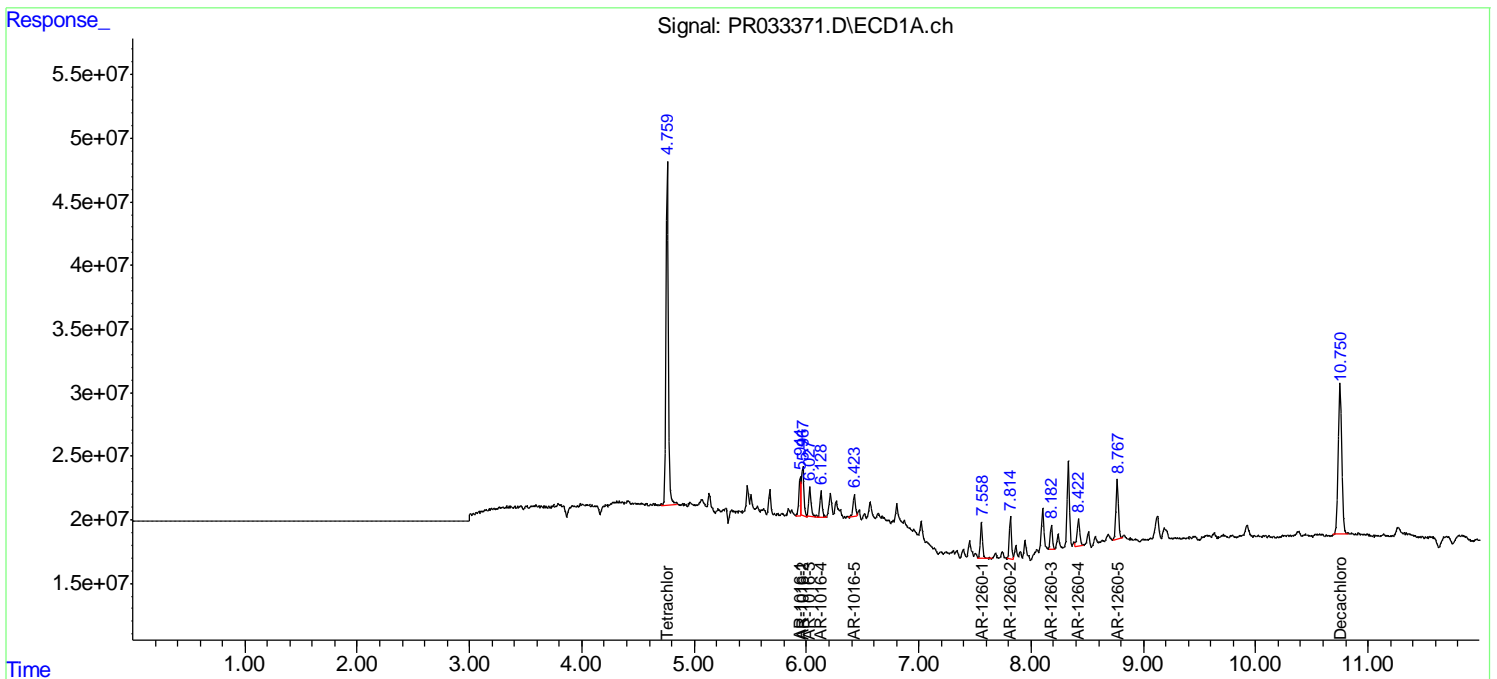
Data Path : \\74.0.250.170\Terastorage\pestpcbsrv\HPCHEM1\ECD_R\Data\PR102918\
 Data File : PR033371.D
 Signal(s) : Signal #1: ECD1A.ch Signal #2: ECD2B.ch
 Acq On : 29 Oct 2018 19:18
 Operator : SM\SJ
 Sample : PB114251BS
 Misc :
 ALS Vial : 27 Sample Multiplier: 1

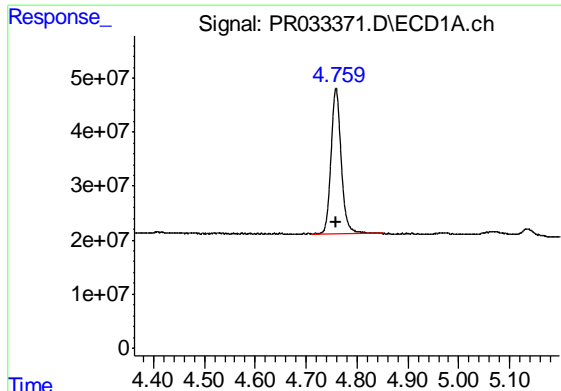
Instrument :
 ECD_R
ClientSampled :
 PB114251BS

Manual Integrations
APPROVED
 Sohil
 10/30/2018 4:18:43 PM

Integration File signal 1: autoint1.e
 Integration File signal 2: autoint2.e
 Quant Time: Oct 30 01:03:25 2018
 Quant Method : Z:\pestpcbsrv\HPCHEM1\ECD_R\Method\PR102818.M
 Quant Title : GC EXTRACTABLES
 QLast Update : Mon Oct 29 02:03:30 2018
 Response via : Initial Calibration
 Integrator: ChemStation

Volume Inj. : 2 µl
 Signal #1 Phase : ZB-MR1 Signal #2 Phase: ZB-MR2
 Signal #1 Info : 30Mx0.32mmx 0.50µ Signal #2 Info : 30M x 0.32mm x 0.25µm

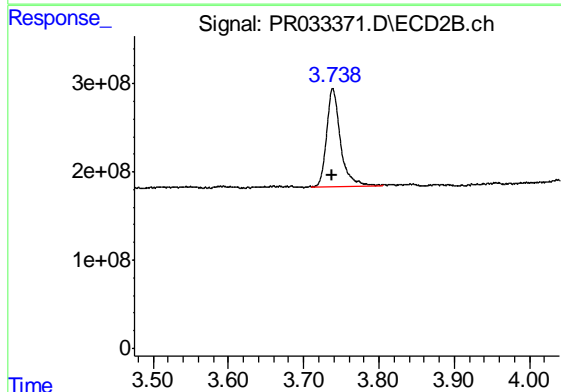




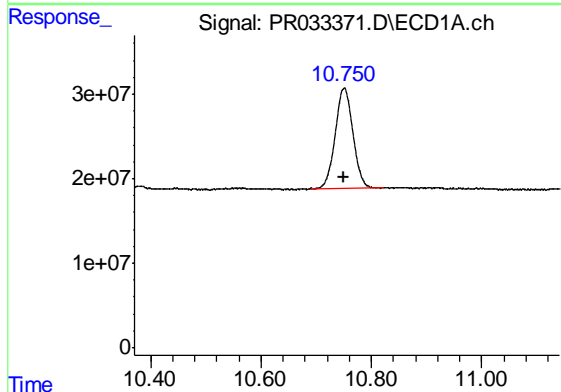
#1 Tetrachloro-m-xylene
 R.T.: 4.759 min
 Delta R.T.: 0.000 min
 Response: 377681953
 Conc: 21.78 ng/ml m

Instrument :
 ECD_R
 ClientSampleId :
 PB114251BS

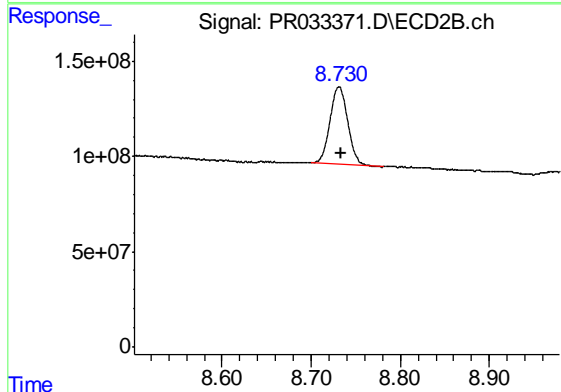
Manual Integrations
 APPROVED
 Sohil
 10/30/2018 4:18:43 PM



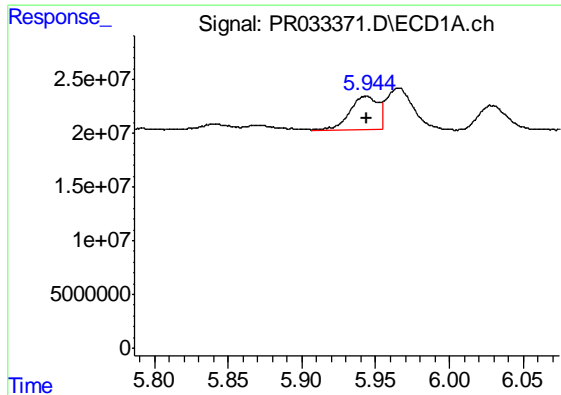
#1 Tetrachloro-m-xylene
 R.T.: 3.739 min
 Delta R.T.: 0.000 min
 Response: 1430410542
 Conc: 21.88 ng/ml



#2 Decachlorobiphenyl
 R.T.: 10.751 min
 Delta R.T.: 0.000 min
 Response: 262459184
 Conc: 16.43 ng/ml



#2 Decachlorobiphenyl
 R.T.: 8.731 min
 Delta R.T.: -0.003 min
 Response: 561483320
 Conc: 14.76 ng/ml

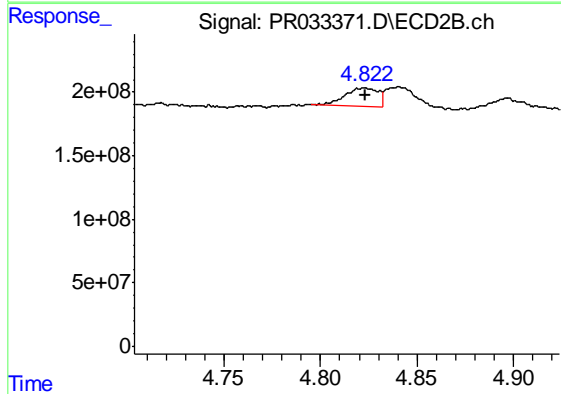


#3 AR-1016-1
 R.T.: 5.944 min
 Delta R.T.: 0.000 min
 Response: 42467953
 Conc: 64.33 ng/ml m

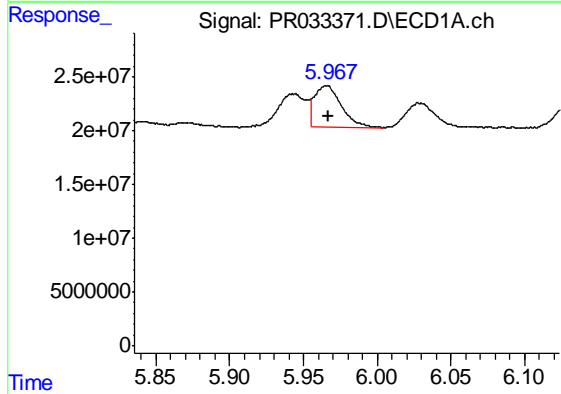
Instrument :
 ECD_R
 ClientSampleId :
 PB114251BS

Manual Integrations
 APPROVED

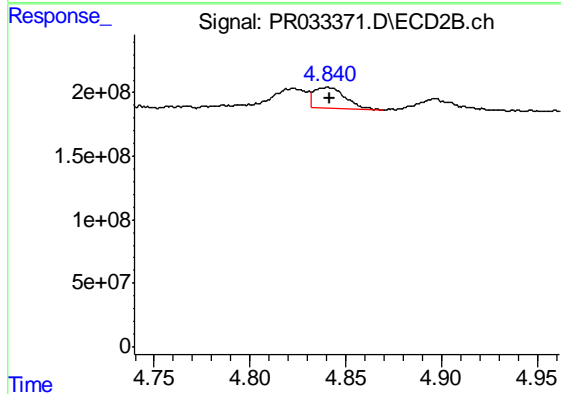
Sohil
 10/30/2018 4:18:43 PM



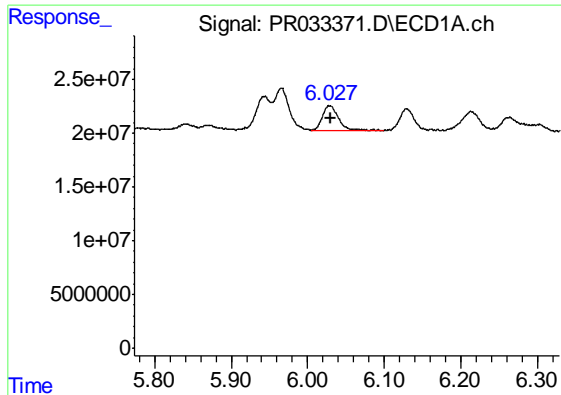
#3 AR-1016-1
 R.T.: 4.823 min
 Delta R.T.: 0.000 min
 Response: 175152655
 Conc: 77.09 ng/ml



#4 AR-1016-2
 R.T.: 5.967 min
 Delta R.T.: 0.000 min
 Response: 48824604
 Conc: 50.59 ng/ml m



#4 AR-1016-2
 R.T.: 4.840 min
 Delta R.T.: -0.001 min
 Response: 189897964
 Conc: 54.42 ng/ml



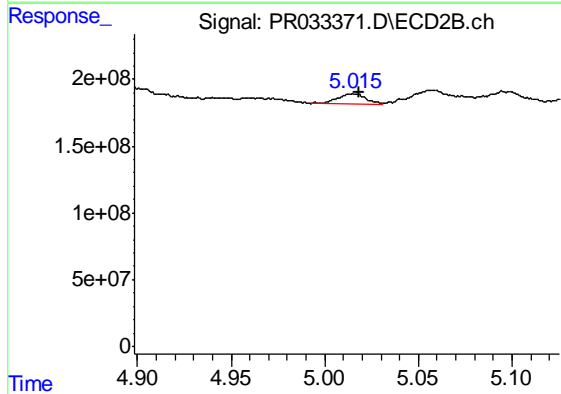
#5 AR-1016-3

R.T.: 6.029 min
 Delta R.T.: 0.000 min
 Response: 33504793
 Conc: 57.30 ng/ml

Instrument :
 ECD_R
 ClientSampleId :
 PB114251BS

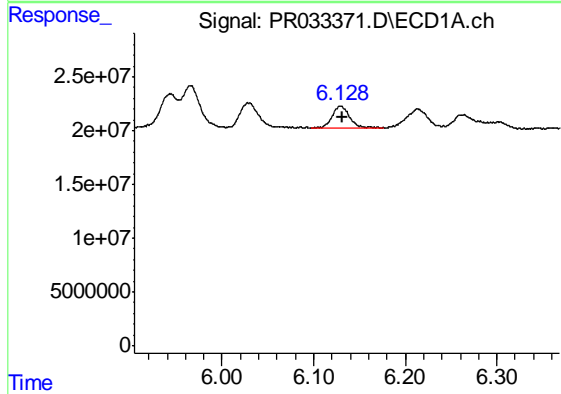
Manual Integrations
 APPROVED

Sohil
 10/30/2018 4:18:43 PM



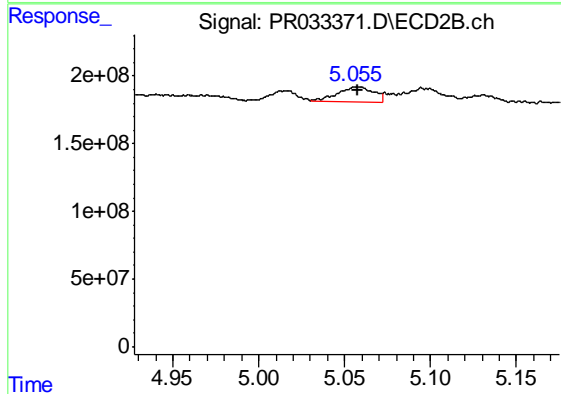
#5 AR-1016-3

R.T.: 5.015 min
 Delta R.T.: -0.003 min
 Response: 83537782
 Conc: 48.43 ng/ml



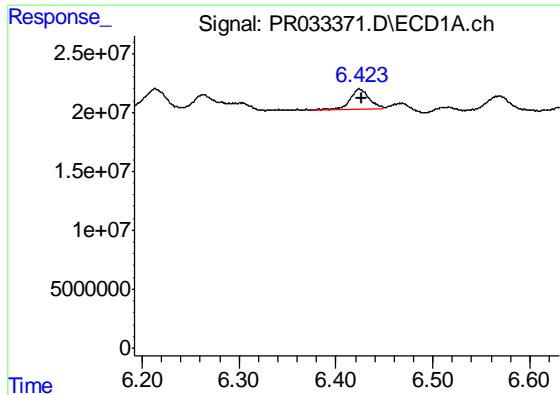
#6 AR-1016-4

R.T.: 6.130 min
 Delta R.T.: -0.001 min
 Response: 27418454
 Conc: 57.45 ng/ml



#6 AR-1016-4

R.T.: 5.056 min
 Delta R.T.: -0.002 min
 Response: 157637547
 Conc: 114.31 ng/ml



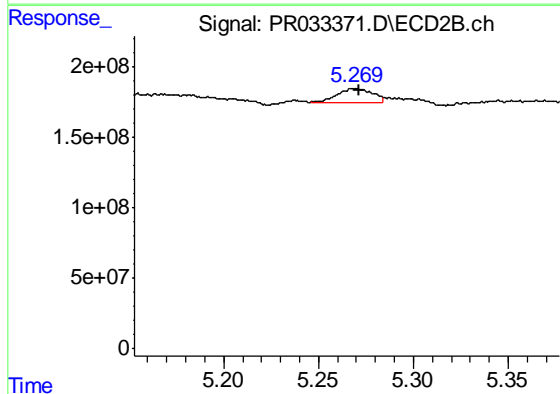
#7 AR-1016-5

R.T.: 6.423 min
 Delta R.T.: -0.003 min
 Response: 24599451
 Conc: 52.10 ng/ml m

Instrument :
 ECD_R
 ClientSampled :
 PB114251BS

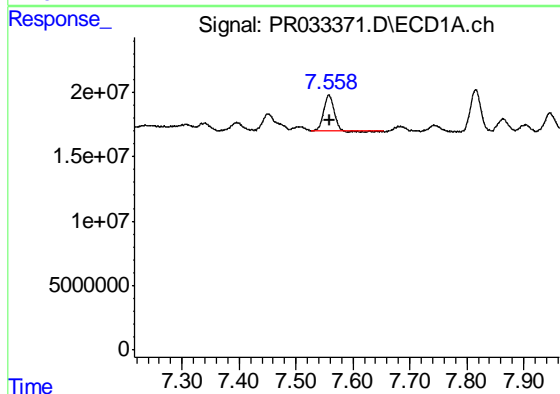
Manual Integrations
 APPROVED

Sohil
 10/30/2018 4:18:43 PM



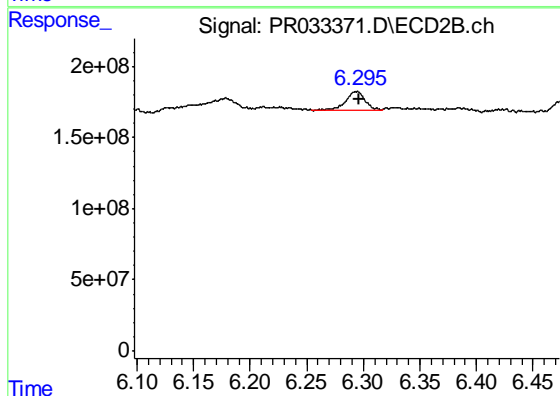
#7 AR-1016-5

R.T.: 5.269 min
 Delta R.T.: -0.003 min
 Response: 123224638
 Conc: 68.46 ng/ml m



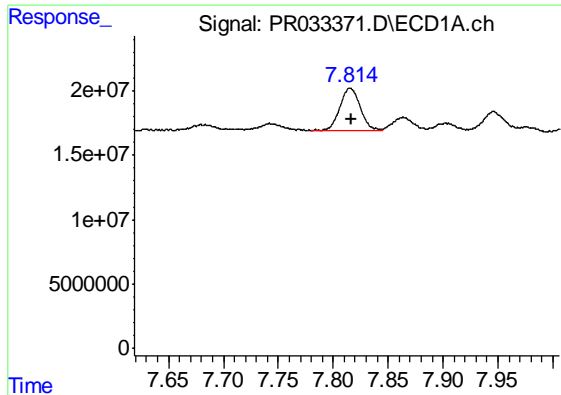
#31 AR-1260-1

R.T.: 7.558 min
 Delta R.T.: -0.001 min
 Response: 35003265
 Conc: 36.55 ng/ml m



#31 AR-1260-1

R.T.: 6.295 min
 Delta R.T.: -0.001 min
 Response: 159011693
 Conc: 52.28 ng/ml m



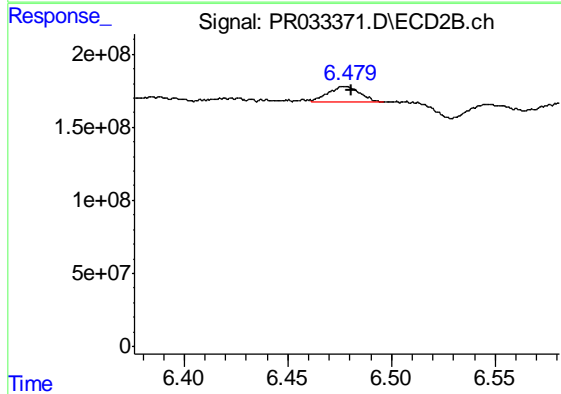
#32 AR-1260-2

R.T.: 7.816 min
 Delta R.T.: 0.000 min
 Response: 43292796
 Conc: 38.47 ng/ml

Instrument :
 ECD_R
 ClientSampleId :
 PB114251BS

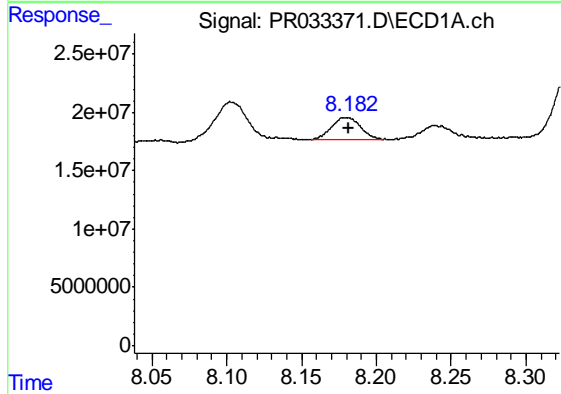
Manual Integrations
 APPROVED

Sohil
 10/30/2018 4:18:43 PM



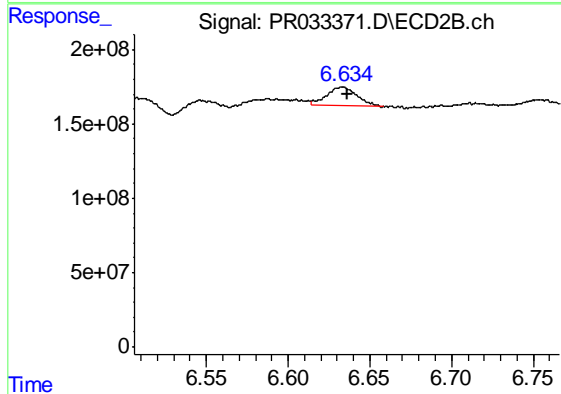
#32 AR-1260-2

R.T.: 6.479 min
 Delta R.T.: -0.002 min
 Response: 107586101
 Conc: 30.01 ng/ml m



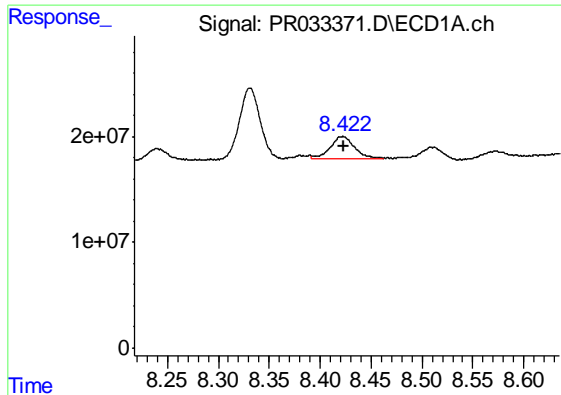
#33 AR-1260-3

R.T.: 8.182 min
 Delta R.T.: 0.000 min
 Response: 25871461
 Conc: 30.48 ng/ml m



#33 AR-1260-3

R.T.: 6.634 min
 Delta R.T.: -0.002 min
 Response: 161121140
 Conc: 47.94 ng/ml m



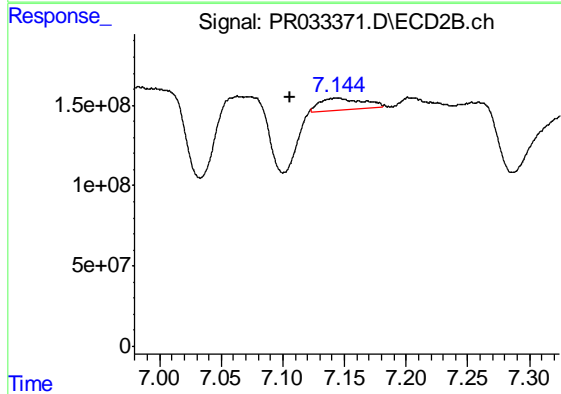
#34 AR-1260-4

R.T.: 8.422 min
 Delta R.T.: -0.001 min
 Response: 34840505
 Conc: 35.56 ng/ml m

Instrument :
 ECD_R
 ClientSampled :
 PB114251BS

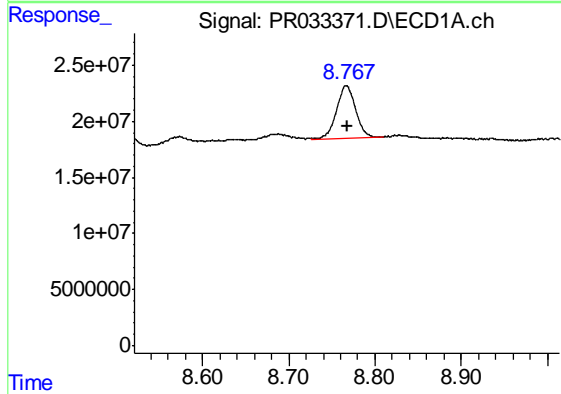
Manual Integrations
 APPROVED

Sohil
 10/30/2018 4:18:43 PM



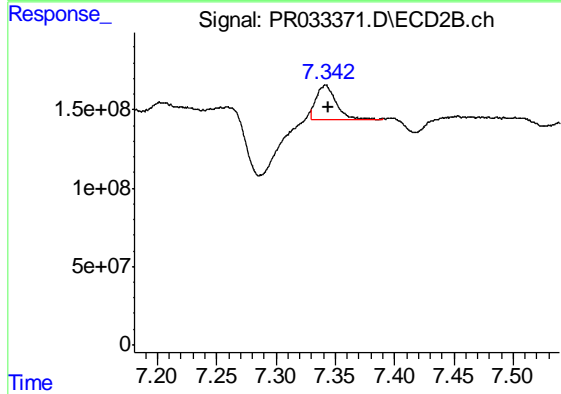
#34 AR-1260-4

R.T.: 7.144 min
 Delta R.T.: 0.038 min
 Response: 178462828
 Conc: 68.69 ng/ml m



#35 AR-1260-5

R.T.: 8.767 min
 Delta R.T.: -0.002 min
 Response: 71878327
 Conc: 36.58 ng/ml m



#35 AR-1260-5

R.T.: 7.342 min
 Delta R.T.: -0.002 min
 Response: 250001855
 Conc: 38.19 ng/ml m