

Data Path : \\74.0.250.170\Terastorage\pestpcbsrv\HPCHEM1\ECD_R\Data\PR103118\
 Data File : PR033454.D
 Signal(s) : Signal #1: ECD1A.ch Signal #2: ECD2B.ch
 Acq On : 31 Oct 2018 17:40
 Operator : SM\SJ
 Sample : J5164-03
 Misc : AR1221 MDL
 ALS Vial : 10 Sample Multiplier: 1

Integration File signal 1: autoint1.e
 Integration File signal 2: autoint2.e
 Quant Time: Nov 01 02:00:02 2018
 Quant Method : Z:\pestpcbsrv\HPCHEM1\ECD_R\Method\PR102818.M
 Quant Title : GC EXTRACTABLES
 QLast Update : Mon Oct 29 02:03:30 2018
 Response via : Initial Calibration
 Integrator: ChemStation

Volume Inj. : 2 µl
 Signal #1 Phase : ZB-MR1 Signal #2 Phase: ZB-MR2
 Signal #1 Info : 30Mx0.32mmx 0.50µ Signal #2 Info : 30M x 0.32mm x 0.25µm

Compound	RT#1	RT#2	Resp#1	Resp#2	ng/ml	ng/ml
----------	------	------	--------	--------	-------	-------

 System Monitoring Compounds

1) SA Tetrachlo...	4.759	3.739	424.4E6	1467.5E6	24.476	22.448
2) SA Decachlor...	10.752	8.728	309.7E6	858.4E6	19.392	22.566

Target Compounds

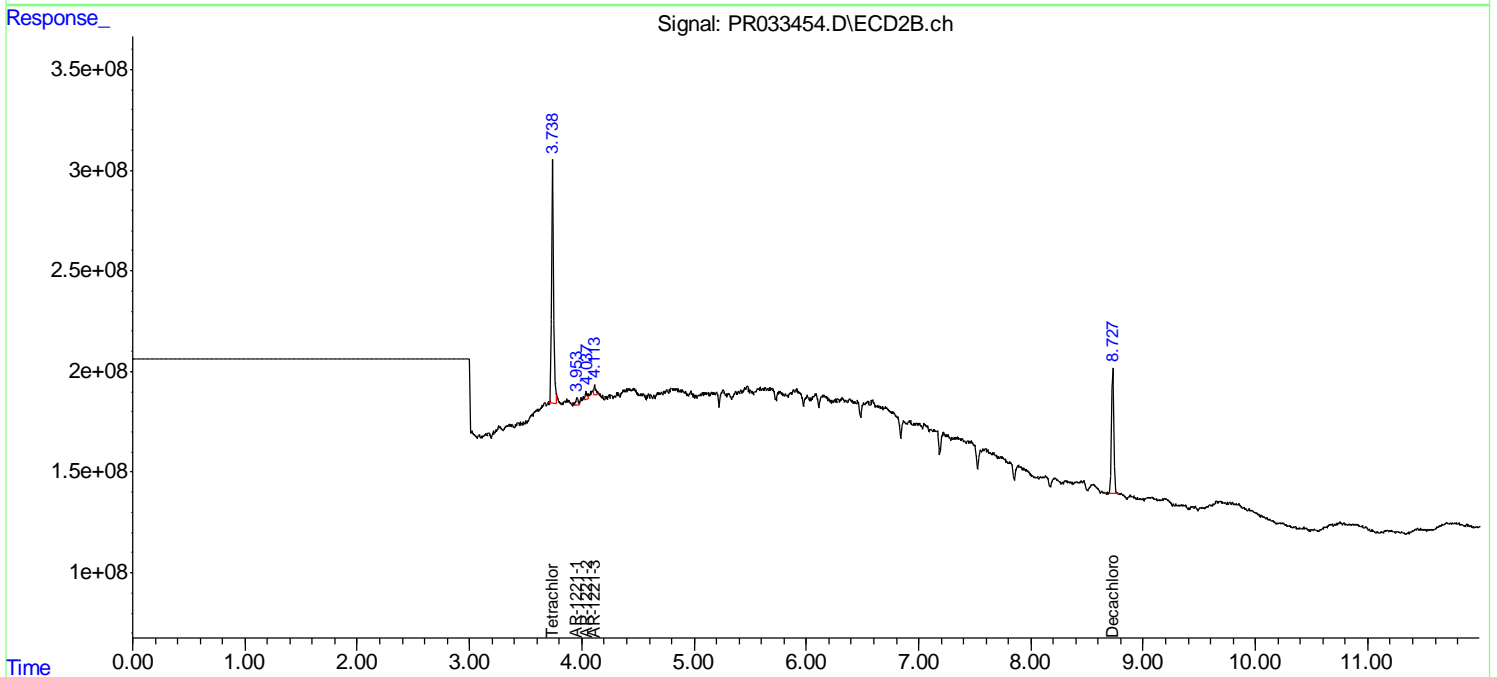
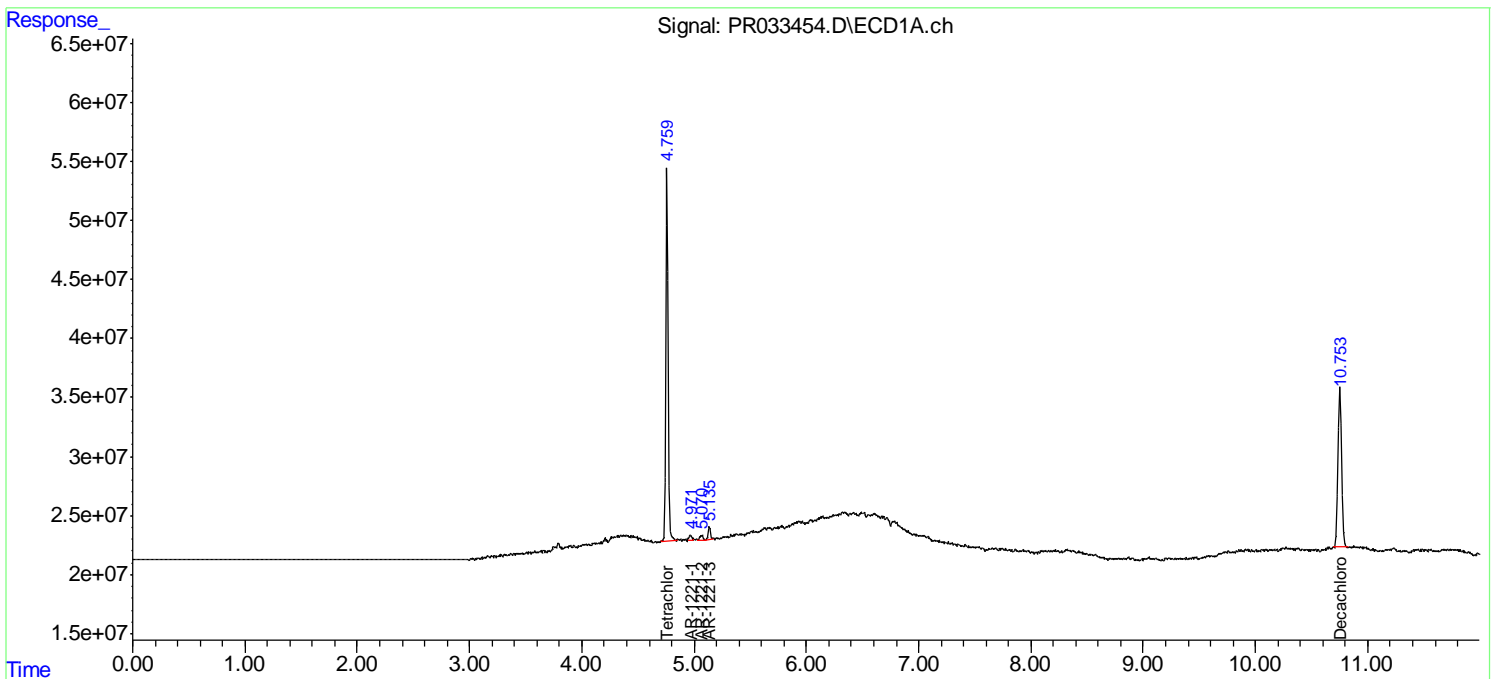
8) L2 AR-1221-1	4.971	3.953	7048873	38889278	31.320m	51.926m#
9) L2 AR-1221-2	5.070	4.037	8441790	50179245	51.537	87.024m#
10) L2 AR-1221-3	5.136	4.113	16515918	57256771	33.455	32.055m

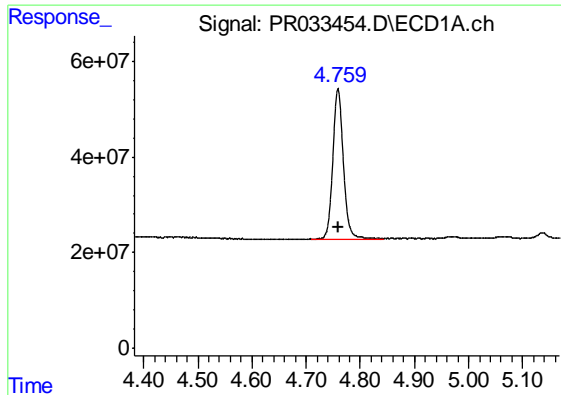
(f)=RT Delta > 1/2 Window (#)=Amounts differ by > 25% (m)=manual int.

Data Path : \\74.0.250.170\Terastorage\pestpcbsrv\HPCHEM1\ECD_R\Data\PR103118\
Data File : PR033454.D
Signal(s) : Signal #1: ECD1A.ch Signal #2: ECD2B.ch
Acq On : 31 Oct 2018 17:40
Operator : SM\SJ
Sample : J5164-03
Misc : AR1221 MDL
ALS Vial : 10 Sample Multiplier: 1

Integration File signal 1: autoint1.e
Integration File signal 2: autoint2.e
Quant Time: Nov 01 02:00:02 2018
Quant Method : Z:\pestpcbsrv\HPCHEM1\ECD_R\Method\PR102818.M
Quant Title : GC EXTRACTABLES
QLast Update : Mon Oct 29 02:03:30 2018
Response via : Initial Calibration
Integrator: ChemStation

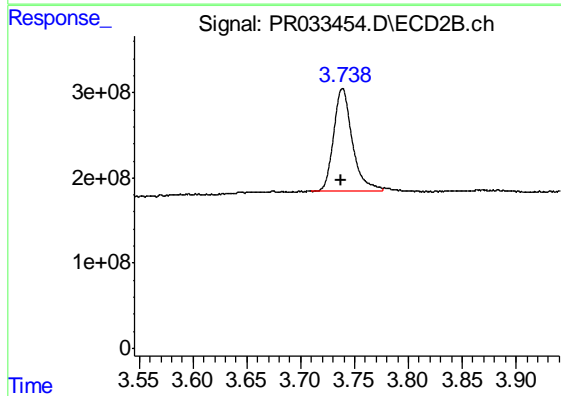
Volume Inj. : 2 µl
Signal #1 Phase : ZB-MR1 Signal #2 Phase: ZB-MR2
Signal #1 Info : 30Mx0.32mmx 0.50µ Signal #2 Info : 30M x 0.32mm x 0.25µm





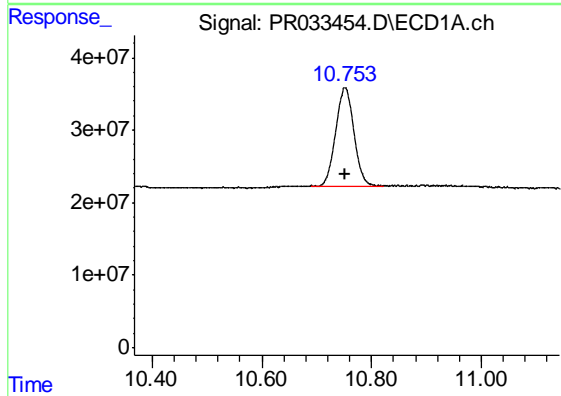
#1 Tetrachloro-m-xylene

R.T.: 4.759 min
Delta R.T.: 0.000 min
Response: 424443504
Conc: 24.48 ng/ml



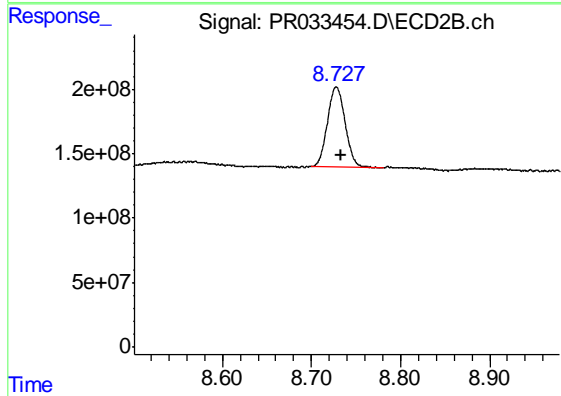
#1 Tetrachloro-m-xylene

R.T.: 3.739 min
Delta R.T.: 0.000 min
Response: 1467545210
Conc: 22.45 ng/ml



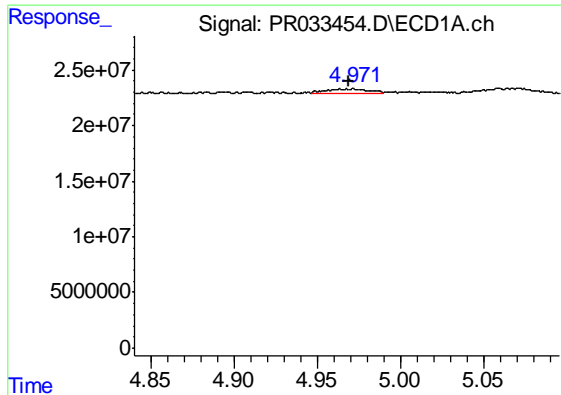
#2 Decachlorobiphenyl

R.T.: 10.752 min
Delta R.T.: 0.000 min
Response: 309694227
Conc: 19.39 ng/ml

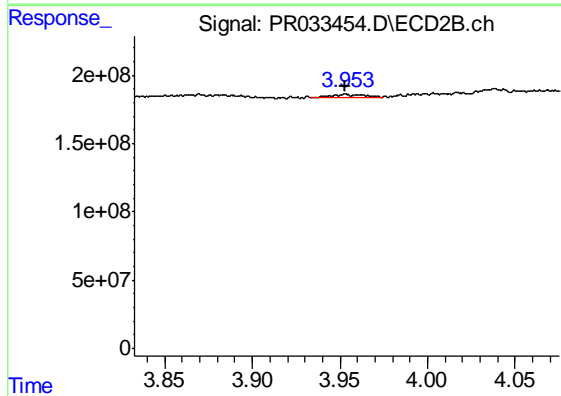


#2 Decachlorobiphenyl

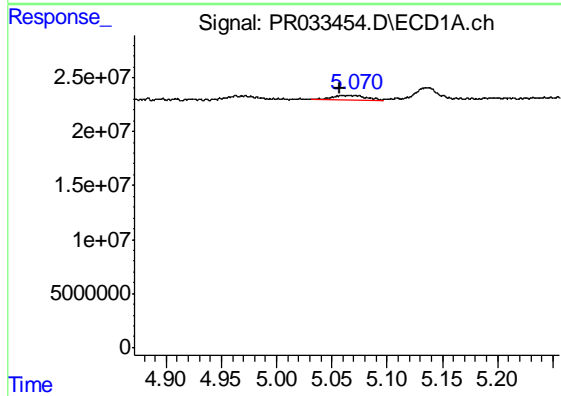
R.T.: 8.728 min
Delta R.T.: -0.006 min
Response: 858398011
Conc: 22.57 ng/ml



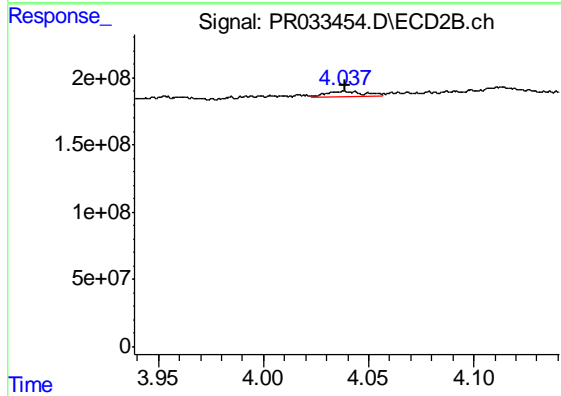
#8 AR-1221-1
 R.T.: 4.971 min
 Delta R.T.: 0.002 min
 Response: 7048873
 Conc: 31.32 ng/ml m



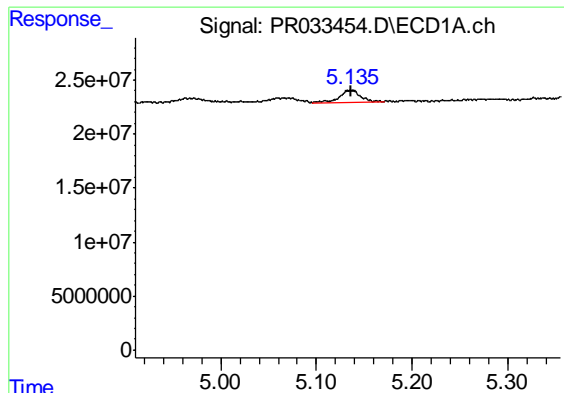
#8 AR-1221-1
 R.T.: 3.953 min
 Delta R.T.: 0.000 min
 Response: 38889278
 Conc: 51.93 ng/ml m



#9 AR-1221-2
 R.T.: 5.070 min
 Delta R.T.: 0.013 min
 Response: 8441790
 Conc: 51.54 ng/ml

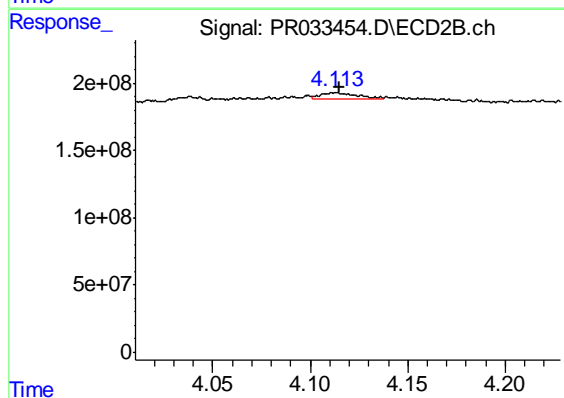


#9 AR-1221-2
 R.T.: 4.037 min
 Delta R.T.: -0.001 min
 Response: 50179245
 Conc: 87.02 ng/ml m



#10 AR-1221-3

R.T.: 5.136 min
Delta R.T.: 0.000 min
Response: 16515918
Conc: 33.46 ng/ml



#10 AR-1221-3

R.T.: 4.113 min
Delta R.T.: -0.003 min
Response: 57256771
Conc: 32.06 ng/ml m