

Data Path : \\74.0.250.170\Terastorage\pestpcbsrv\HPCHEM1\ECD\_R\Data\PR103118\  
 Data File : PR033499.D  
 Signal(s) : Signal #1: ECD1A.ch Signal #2: ECD2B.ch  
 Acq On : 01 Nov 2018 07:52  
 Operator : SM\SJ  
 Sample : J5730-03  
 Misc :  
 ALS Vial : 51 Sample Multiplier: 1

Integration File signal 1: autoint1.e  
 Integration File signal 2: autoint2.e  
 Quant Time: Nov 01 17:51:25 2018  
 Quant Method : Z:\pestpcbsrv\HPCHEM1\ECD\_R\Method\PR102818.M  
 Quant Title : GC EXTRACTABLES  
 QLast Update : Mon Oct 29 02:03:30 2018  
 Response via : Initial Calibration  
 Integrator: ChemStation

Volume Inj. : 2 µl  
 Signal #1 Phase : ZB-MR1 Signal #2 Phase: ZB-MR2  
 Signal #1 Info : 30Mx0.32mmx 0.50µ Signal #2 Info : 30M x 0.32mm x 0.25µm

Compound	RT#1	RT#2	Resp#1	Resp#2	ng/ml	ng/ml
----------	------	------	--------	--------	-------	-------

-----  
 System Monitoring Compounds

1) SA Tetrachlo...	4.758	3.738	269.6E6	885.9E6	15.549	13.551
2) SA Decachlor...	10.753	8.727	264.4E6	718.1E6	16.555	18.879

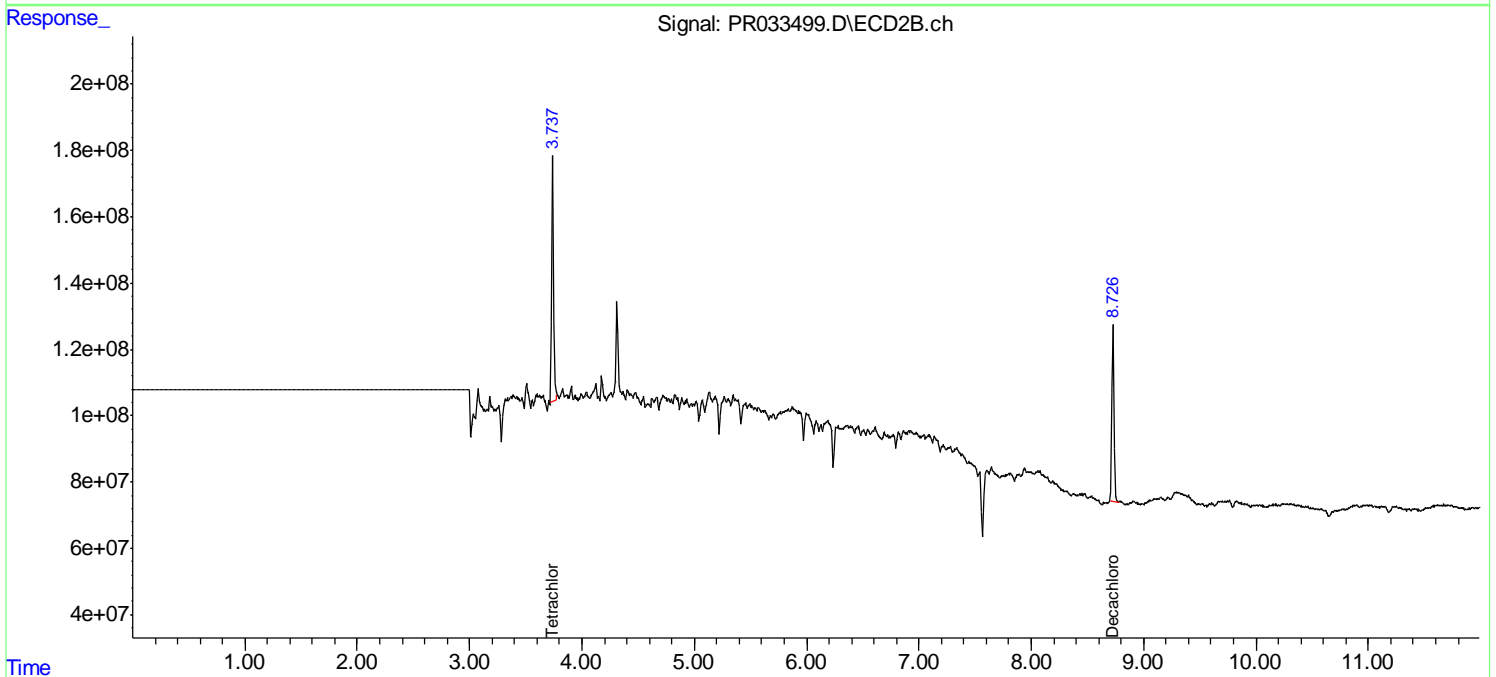
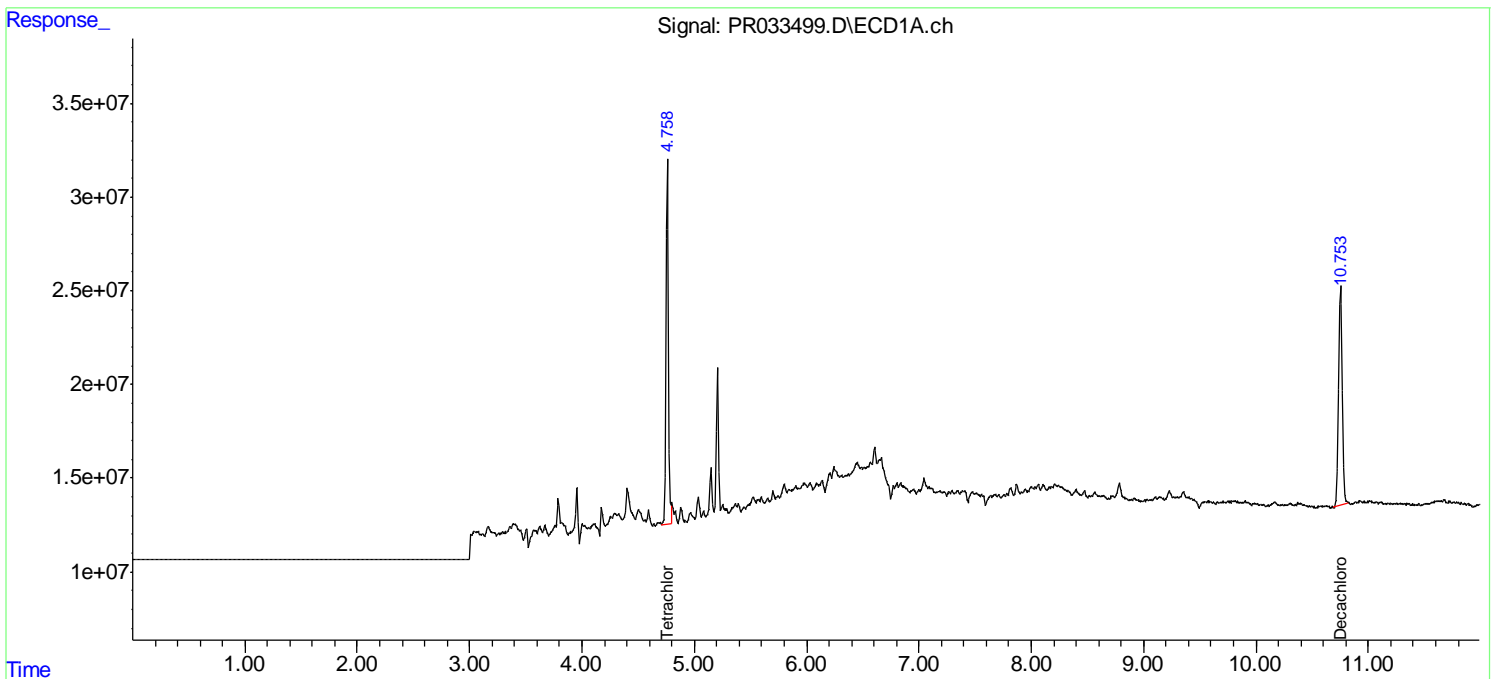
Target Compounds  
 -----

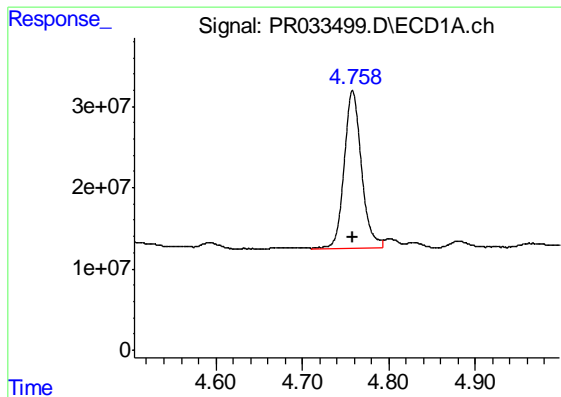
(f)=RT Delta > 1/2 Window (#)=Amounts differ by > 25% (m)=manual int.

Data Path : \\74.0.250.170\Terastorage\pestpcbsrv\HPCHEM1\ECD\_R\Data\PR103118\  
 Data File : PR033499.D  
 Signal(s) : Signal #1: ECD1A.ch Signal #2: ECD2B.ch  
 Acq On : 01 Nov 2018 07:52  
 Operator : SM\SJ  
 Sample : J5730-03  
 Misc :  
 ALS Vial : 51 Sample Multiplier: 1

Integration File signal 1: autoint1.e  
 Integration File signal 2: autoint2.e  
 Quant Time: Nov 01 17:51:25 2018  
 Quant Method : Z:\pestpcbsrv\HPCHEM1\ECD\_R\Method\PR102818.M  
 Quant Title : GC EXTRACTABLES  
 QLast Update : Mon Oct 29 02:03:30 2018  
 Response via : Initial Calibration  
 Integrator: ChemStation

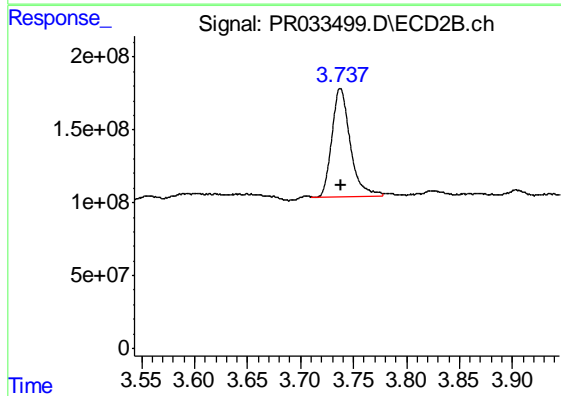
Volume Inj. : 2 µl  
 Signal #1 Phase : ZB-MR1 Signal #2 Phase: ZB-MR2  
 Signal #1 Info : 30Mx0.32mmx 0.50µ Signal #2 Info : 30M x 0.32mm x 0.25µm





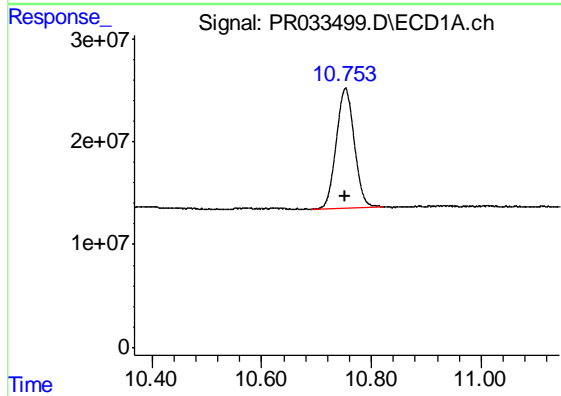
#1 Tetrachloro-m-xylene

R.T.: 4.758 min  
Delta R.T.: 0.000 min  
Response: 269637334  
Conc: 15.55 ng/ml



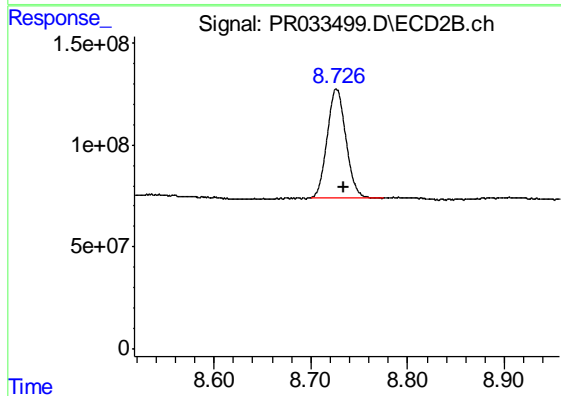
#1 Tetrachloro-m-xylene

R.T.: 3.738 min  
Delta R.T.: 0.000 min  
Response: 885885809  
Conc: 13.55 ng/ml



#2 Decachlorobiphenyl

R.T.: 10.753 min  
Delta R.T.: 0.002 min  
Response: 264382402  
Conc: 16.55 ng/ml



#2 Decachlorobiphenyl

R.T.: 8.727 min  
Delta R.T.: -0.007 min  
Response: 718126981  
Conc: 18.88 ng/ml