

Data Path : Z:\pestpcbsrv\HPCHEM1\ECD_R\Data\PR110121\
 Data File : PR052399.D
 Signal(s) : Signal #1: ECD1A.ch Signal #2: ECD2B.ch
 Acq On : 01 Nov 2021 15:05
 Operator : AJ\MA
 Sample : PB140382BL
 Misc :
 ALS Vial : 7 Sample Multiplier: 1

Instrument :
 ECD_R
 ClientSampled :

Integration File signal 1: autoint1.e
 Integration File signal 2: autoint2.e
 Quant Time: Nov 02 06:22:28 2021
 Quant Method : Z:\pestpcbsrv\HPCHEM1\ECD_R\Method\PR101421CLP.M
 Quant Title : GC EXTRACTABLES
 QLast Update : Sat Oct 16 08:36:17 2021
 Response via : Initial Calibration
 Integrator: ChemStation

Volume Inj. : 1 µl
 Signal #1 Phase : ZB MR1 Signal #2 Phase: ZB MR2
 Signal #1 Info : 30Mx0.32mmx 0.5µm Signal #2 Info : 30M x 0.32mm x 0.25µm

Compound	RT#1	RT#2	Resp#1	Resp#2	ng/ml	ng/ml

System Monitoring Compounds						
1) SA Tetrachlo...	4.688	3.855	72586252	58481195	18.479	20.476
2) SA Decachlor...	10.630	8.871	127.6E6	132.0E6	36.320	38.819
Target Compounds						
3) L1 AR-1016-1	5.866	4.941	111558	111925	0.919	1.278 #
4) L1 AR-1016-2	5.928	4.941	105231	111925	0.608	0.834 #
5) L1 AR-1016-3	5.984	5.179f	66069	156757	0.614	2.204 #
6) L1 AR-1016-4	6.023f	5.179	181675	156757	2.061	2.879 #
7) L1 AR-1016-5	6.374	0.000	815996	0	9.216	N.D. #
8) L2 AR-1221-1	4.928	4.077	315623	660978	6.885	17.134 #
9) L2 AR-1221-2	4.991	4.157	2040771	680910	41.113	28.184 #
10) L2 AR-1221-3	5.076	4.224	78808	283788	0.678	3.302 #
11) L3 AR-1232-1	5.076	4.224	78808	283788	1.017	4.785 #
12) L3 AR-1232-2	5.623	4.941	16914	111925	0.420	1.901 #
13) L3 AR-1232-3	5.928	5.179f	105231	156757	1.408	5.243 #
14) L3 AR-1232-4	6.023f	5.179f	181675	156757	4.851	6.071 #
15) L3 AR-1232-5	6.174	0.000	569244	0	18.446	N.D. #
16) L4 AR-1242-1	5.866	4.941	111558	111925	1.120	1.590 #
17) L4 AR-1242-2	5.928	4.941	105231	111925	0.748	1.046 #
18) L4 AR-1242-3	5.984	5.179f	66069	156757	0.751	2.756 #
19) L4 AR-1242-4	6.023f	5.179f	181675	156757	2.548	2.909 #
20) L4 AR-1242-5	6.807	5.718	57497	85762	0.754	1.248 #
21) L5 AR-1248-1	5.866	4.941	111558	111925	1.528	2.148 #
22) L5 AR-1248-2	6.174	5.179	569244	156757	5.309	2.144 #
23) L5 AR-1248-3	6.374	5.179f	815996	156757	7.000	2.009 #
24) L5 AR-1248-4	6.762	0.000	66339	0	0.520	N.D. #
25) L5 AR-1248-5	6.807	5.718f	57497	85762	0.467	0.906 #
26) L6 AR-1254-1	6.762	5.718	66339	85762	0.498	0.591
27) L6 AR-1254-2	6.958	5.886	182405	240714	0.882	1.919 #
28) L6 AR-1254-3	7.309	6.266	396456	579359	1.891	2.727 #
29) L6 AR-1254-4	0.000	6.578f	0	645682	N.D.	4.999 #
30) L6 AR-1254-5	8.004	6.993f	204786	271328	1.186	1.482
32) L7 AR-1260-2	7.686f	6.578	341317	645682	1.908	4.310 #
33) L7 AR-1260-3	8.133	0.000	1425823	0	10.054	N.D. #
35) L7 AR-1260-5	8.687	7.475	3719794	224468	11.476	0.723 #
36) L8 AR-1262-1	8.133	0.000	1425823	0	6.896	N.D. #
37) L8 AR-1262-2	8.687	7.475	3719794	224468	9.894	0.660 #
38) L8 AR-1262-3	9.054f	7.804f	3563545	43023	21.050	0.309 #
39) L8 AR-1262-4	9.083	7.804	402259	43023	3.399	0.160 #
40) L8 AR-1262-5	9.838	8.317	637674	374738	4.304	2.722 #
41) L9 AR-1268-1	9.054f	7.804f	3563545	43023	8.022	0.108 #
42) L9 AR-1268-2	9.083	7.804	402259	43023	0.992	0.111 #
43) L9 AR-1268-3	9.358	8.014	1656161	906358	4.727	2.662 #

Data Path : Z:\pestpcbsrv\HPCHEM1\ECD_R\Data\PR110121\
 Data File : PR052399.D
 Signal(s) : Signal #1: ECD1A.ch Signal #2: ECD2B.ch
 Acq On : 01 Nov 2021 15:05
 Operator : AJ\MA
 Sample : PB140382BL
 Misc :
 ALS Vial : 7 Sample Multiplier: 1

Instrument :
 ECD_R
 ClientSampleId :

Integration File signal 1: autoint1.e
 Integration File signal 2: autoint2.e
 Quant Time: Nov 02 06:22:28 2021
 Quant Method : Z:\pestpcbsrv\HPCHEM1\ECD_R\Method\PR101421CLP.M
 Quant Title : GC EXTRACTABLES
 QLast Update : Sat Oct 16 08:36:17 2021
 Response via : Initial Calibration
 Integrator: ChemStation

Volume Inj. : 1 µl
 Signal #1 Phase : ZB MR1 Signal #2 Phase: ZB MR2
 Signal #1 Info : 30Mx0.32mmx 0.5µm Signal #2 Info : 30M x 0.32mm x 0.25µm

	Compound	RT#1	RT#2	Resp#1	Resp#2	ng/ml	ng/ml
44)	L9 AR-1268-4	9.838	8.317	637674	374738	3.915	2.511 #
45)	L9 AR-1268-5	10.268	8.607	2358844	1955461	2.069	1.654

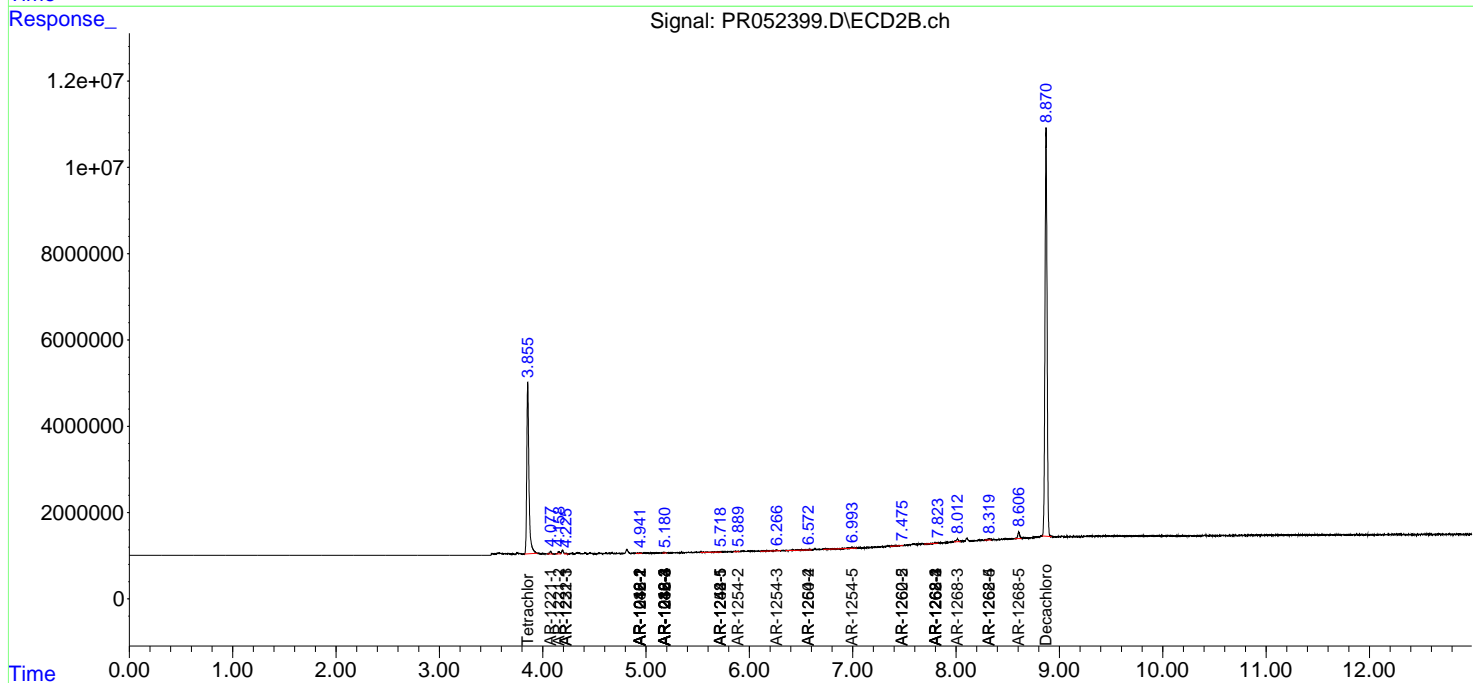
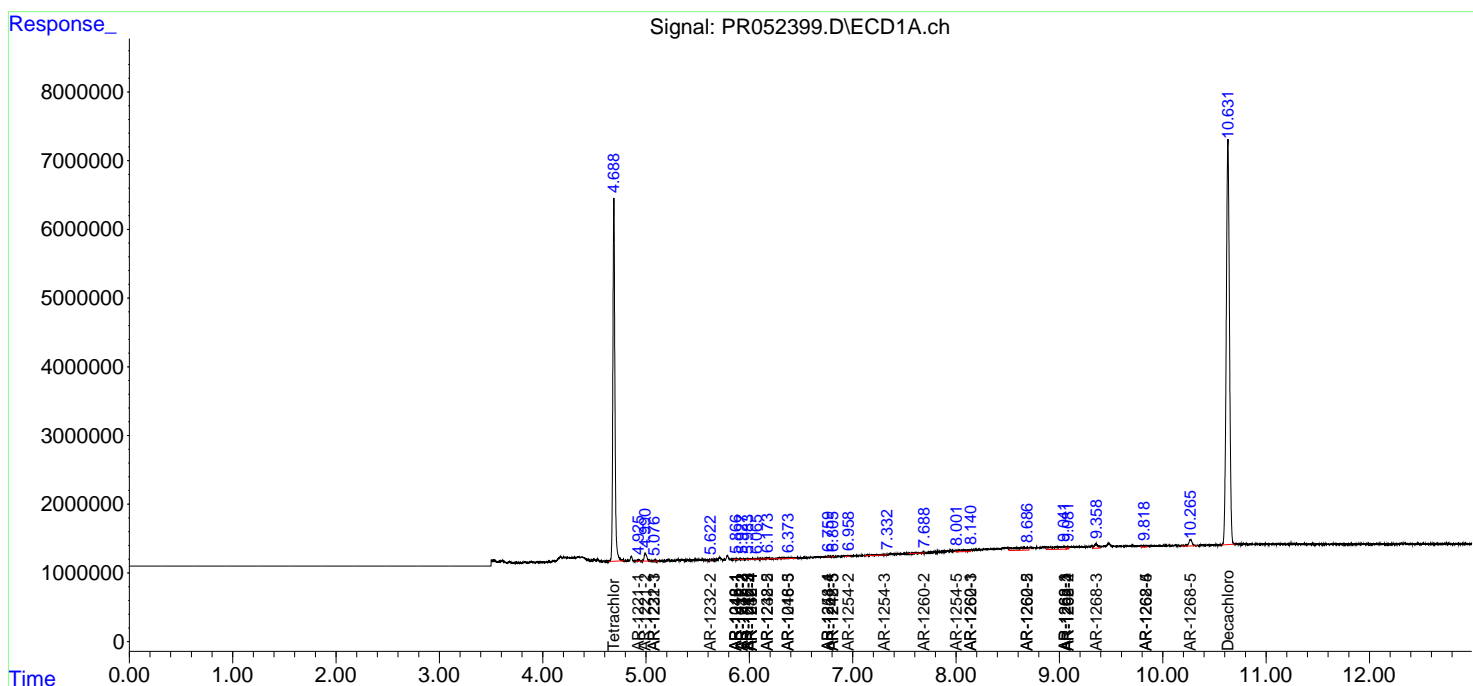
(f)=RT Delta > 1/2 Window (#)=Amounts differ by > 25% (m)=manual int.

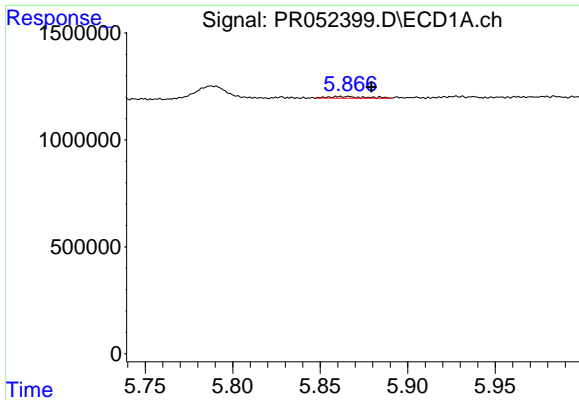
Data Path : Z:\pestpcbsrv\HPCHEM1\ECD_R\Data\PR110121\
 Data File : PR052399.D
 Signal(s) : Signal #1: ECD1A.ch Signal #2: ECD2B.ch
 Acq On : 01 Nov 2021 15:05
 Operator : AJ\MA
 Sample : PB140382BL
 Misc :
 ALS Vial : 7 Sample Multiplier: 1

Instrument :
 ECD_R
 ClientSampled :

Integration File signal 1: autoint1.e
 Integration File signal 2: autoint2.e
 Quant Time: Nov 02 06:22:28 2021
 Quant Method : Z:\pestpcbsrv\HPCHEM1\ECD_R\Method\PR101421CLP.M
 Quant Title : GC EXTRACTABLES
 QLast Update : Sat Oct 16 08:36:17 2021
 Response via : Initial Calibration
 Integrator: ChemStation

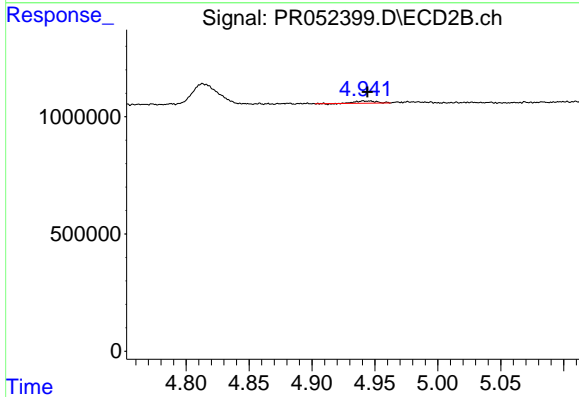
Volume Inj. : 1 µl
 Signal #1 Phase : ZB MR1 Signal #2 Phase: ZB MR2
 Signal #1 Info : 30Mx0.32mmx 0.5µm Signal #2 Info : 30M x 0.32mm x 0.25µm



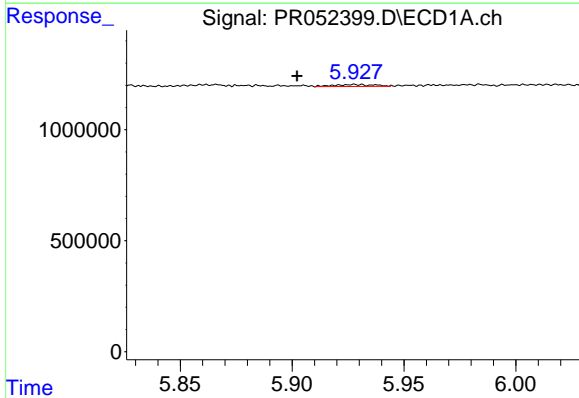


#3 AR-1016-1
 R.T.: 5.866 min
 Delta R.T.: -0.013 min
 Response: 111558
 Conc: 0.92 ng/ml

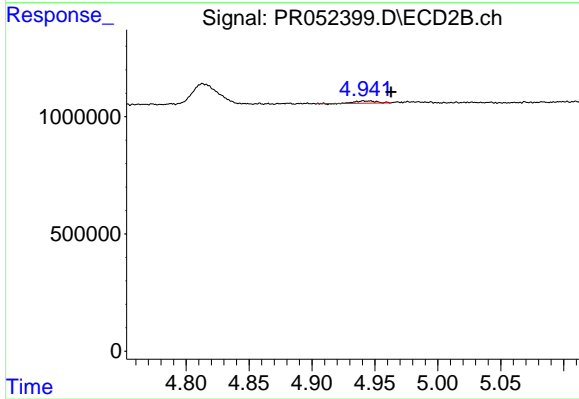
Instrument :
 ECD_R
 ClientSampleId :



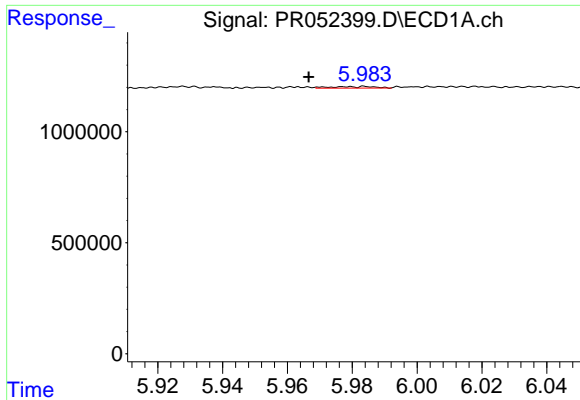
#3 AR-1016-1
 R.T.: 4.941 min
 Delta R.T.: -0.003 min
 Response: 111925
 Conc: 1.28 ng/ml



#4 AR-1016-2
 R.T.: 5.928 min
 Delta R.T.: 0.026 min
 Response: 105231
 Conc: 0.61 ng/ml



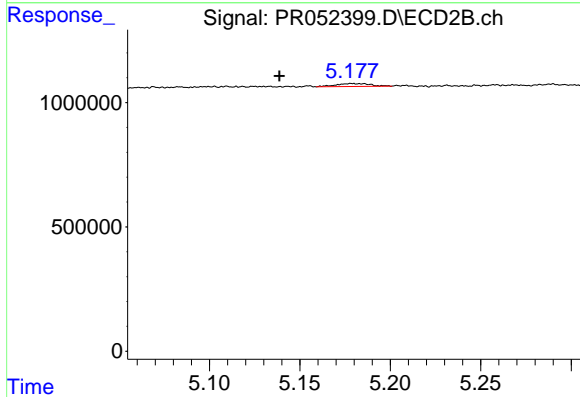
#4 AR-1016-2
 R.T.: 4.941 min
 Delta R.T.: -0.022 min
 Response: 111925
 Conc: 0.83 ng/ml



#5 AR-1016-3

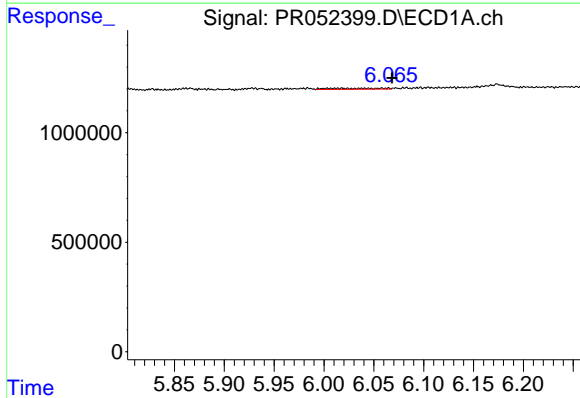
R.T.: 5.984 min
 Delta R.T.: 0.018 min
 Response: 66069
 Conc: 0.61 ng/ml

Instrument :
 ECD_R
 ClientSampleId :



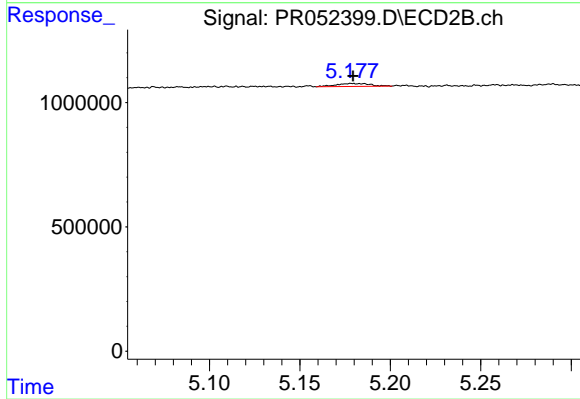
#5 AR-1016-3

R.T.: 5.179 min
 Delta R.T.: 0.040 min
 Response: 156757
 Conc: 2.20 ng/ml



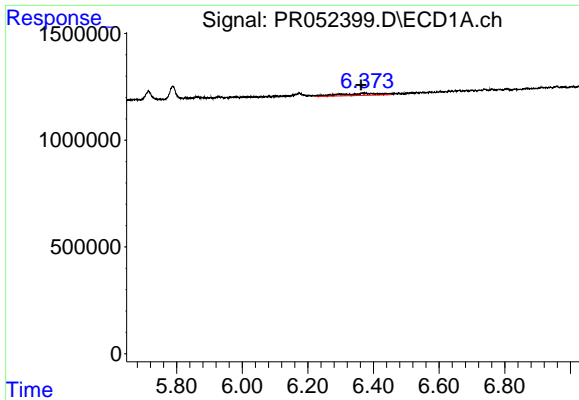
#6 AR-1016-4

R.T.: 6.023 min
 Delta R.T.: -0.045 min
 Response: 181675
 Conc: 2.06 ng/ml



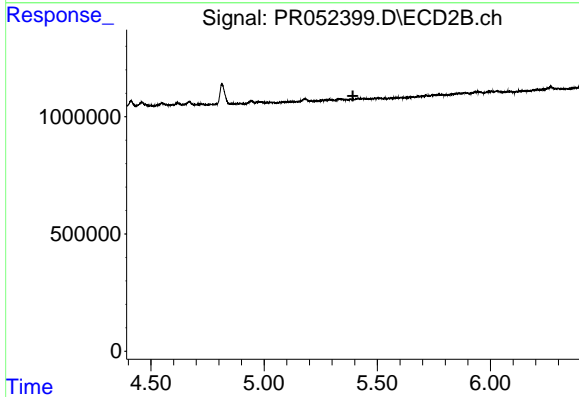
#6 AR-1016-4

R.T.: 5.179 min
 Delta R.T.: 0.000 min
 Response: 156757
 Conc: 2.88 ng/ml

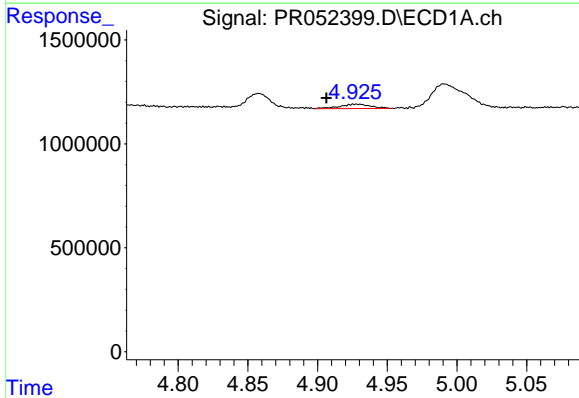


#7 AR-1016-5
 R.T.: 6.374 min
 Delta R.T.: 0.012 min
 Response: 815996
 Conc: 9.22 ng/ml

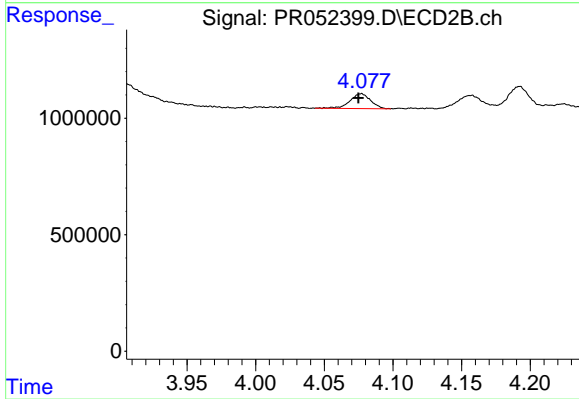
Instrument :
 ECD_R
 ClientSampleId :



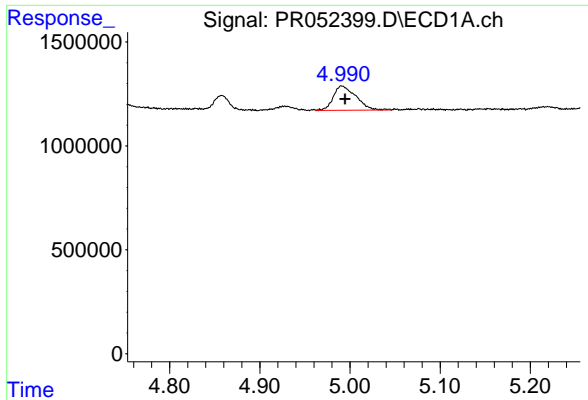
#7 AR-1016-5
 R.T.: 0.000 min
 Exp R.T. : 5.392 min
 Response: 0
 Conc: N.D.



#8 AR-1221-1
 R.T.: 4.928 min
 Delta R.T.: 0.021 min
 Response: 315623
 Conc: 6.88 ng/ml

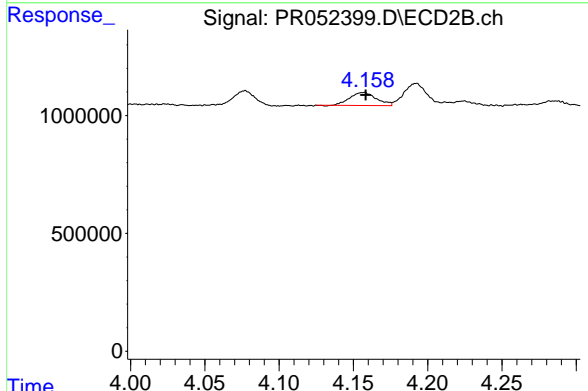


#8 AR-1221-1
 R.T.: 4.077 min
 Delta R.T.: 0.002 min
 Response: 660978
 Conc: 17.13 ng/ml

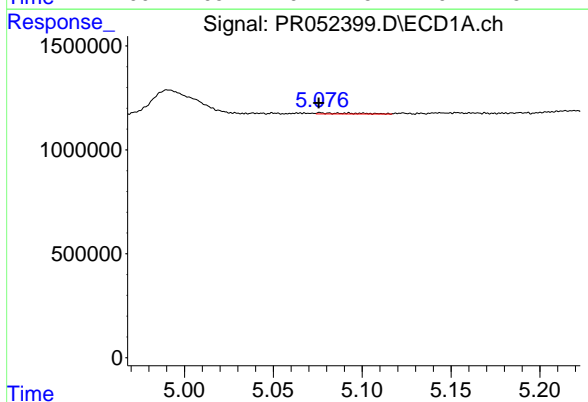


#9 AR-1221-2
 R.T.: 4.991 min
 Delta R.T.: -0.004 min
 Response: 2040771
 Conc: 41.11 ng/ml

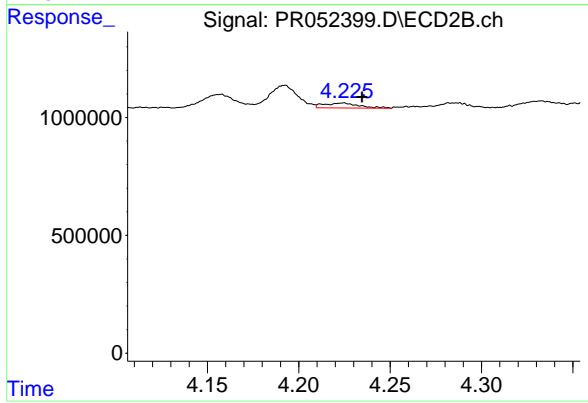
Instrument :
 ECD_R
 ClientSampleId :



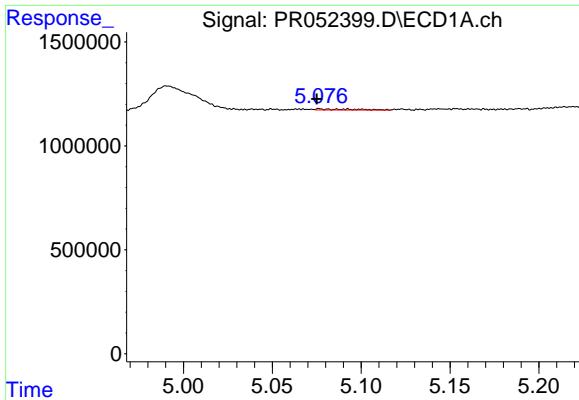
#9 AR-1221-2
 R.T.: 4.157 min
 Delta R.T.: -0.002 min
 Response: 680910
 Conc: 28.18 ng/ml



#10 AR-1221-3
 R.T.: 5.076 min
 Delta R.T.: 0.000 min
 Response: 78808
 Conc: 0.68 ng/ml



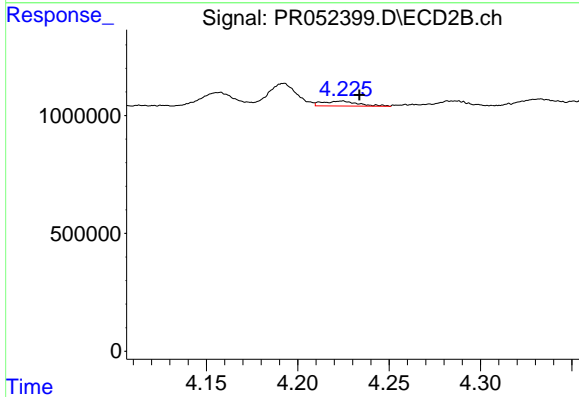
#10 AR-1221-3
 R.T.: 4.224 min
 Delta R.T.: -0.010 min
 Response: 283788
 Conc: 3.30 ng/ml



#11 AR-1232-1

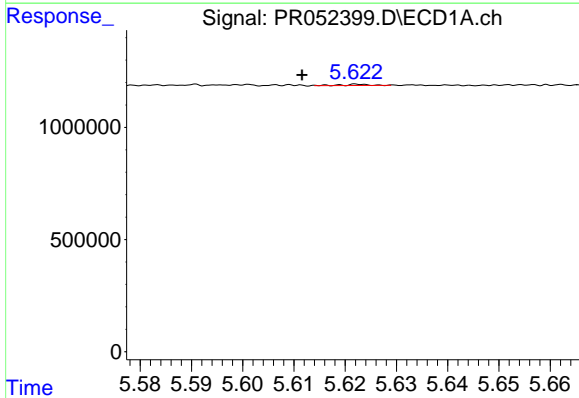
R.T.: 5.076 min
 Delta R.T.: 0.001 min
 Response: 78808
 Conc: 1.02 ng/ml

Instrument :
 ECD_R
 ClientSampleId :



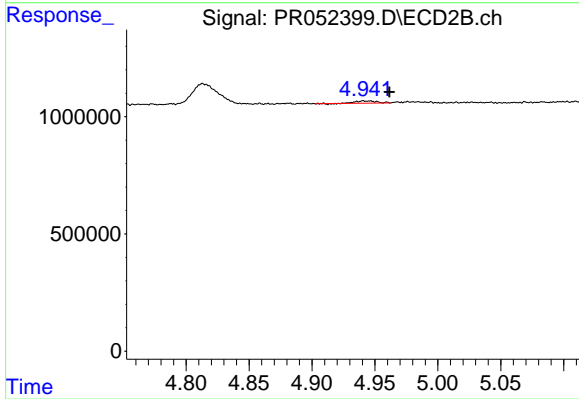
#11 AR-1232-1

R.T.: 4.224 min
 Delta R.T.: -0.009 min
 Response: 283788
 Conc: 4.79 ng/ml



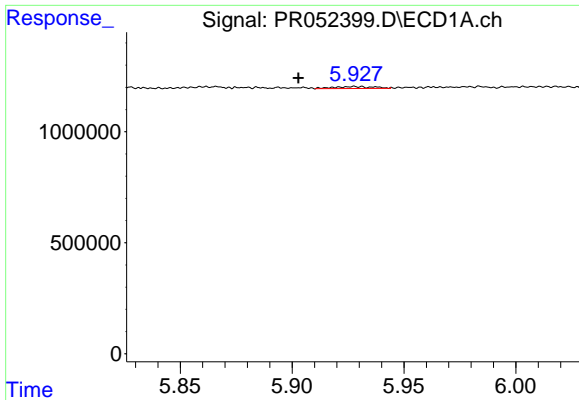
#12 AR-1232-2

R.T.: 5.623 min
 Delta R.T.: 0.011 min
 Response: 16914
 Conc: 0.42 ng/ml



#12 AR-1232-2

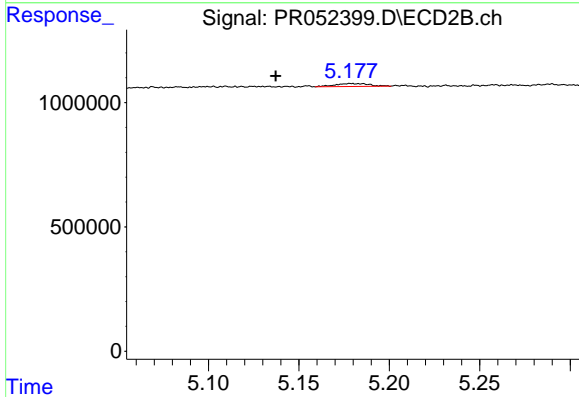
R.T.: 4.941 min
 Delta R.T.: -0.021 min
 Response: 111925
 Conc: 1.90 ng/ml



#13 AR-1232-3

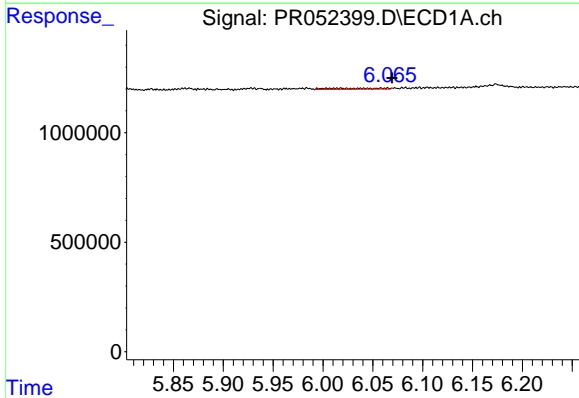
R.T.: 5.928 min
 Delta R.T.: 0.025 min
 Response: 105231
 Conc: 1.41 ng/ml

Instrument :
 ECD_R
 ClientSampleId :



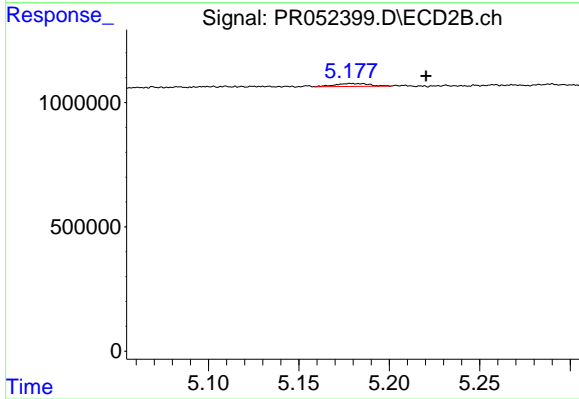
#13 AR-1232-3

R.T.: 5.179 min
 Delta R.T.: 0.042 min
 Response: 156757
 Conc: 5.24 ng/ml



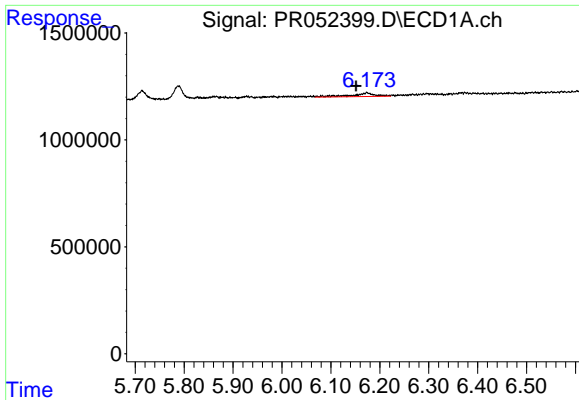
#14 AR-1232-4

R.T.: 6.023 min
 Delta R.T.: -0.046 min
 Response: 181675
 Conc: 4.85 ng/ml



#14 AR-1232-4

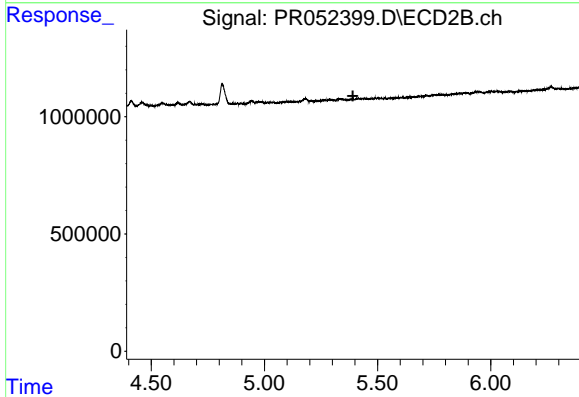
R.T.: 5.179 min
 Delta R.T.: -0.042 min
 Response: 156757
 Conc: 6.07 ng/ml



#15 AR-1232-5

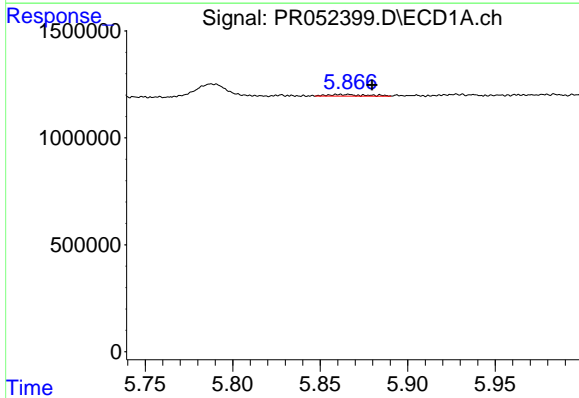
R.T.: 6.174 min
 Delta R.T.: 0.022 min
 Response: 569244
 Conc: 18.45 ng/ml

Instrument :
 ECD_R
 ClientSampled :



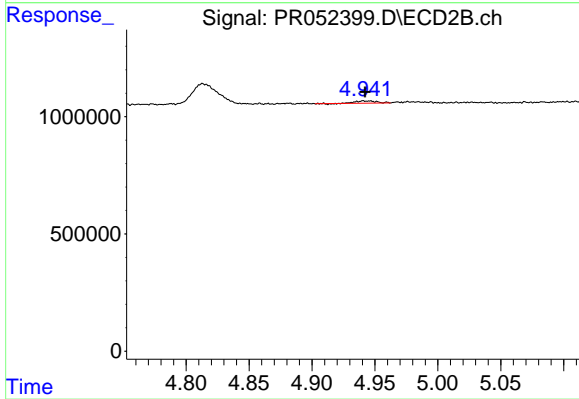
#15 AR-1232-5

R.T.: 0.000 min
 Exp R.T. : 5.391 min
 Response: 0
 Conc: N.D.



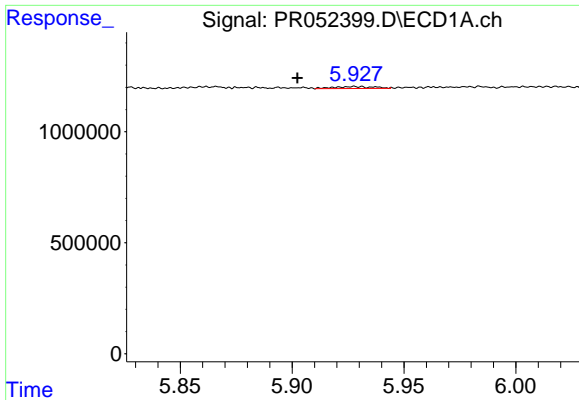
#16 AR-1242-1

R.T.: 5.866 min
 Delta R.T.: -0.013 min
 Response: 111558
 Conc: 1.12 ng/ml



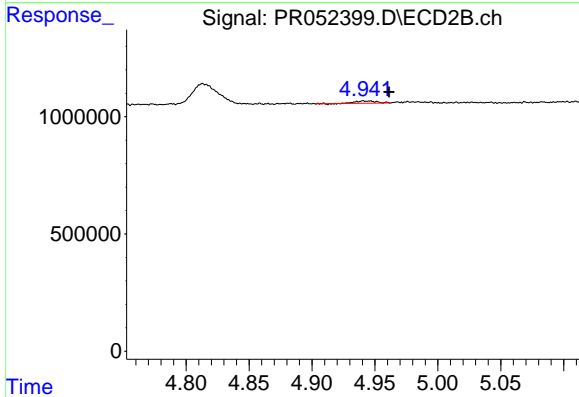
#16 AR-1242-1

R.T.: 4.941 min
 Delta R.T.: -0.001 min
 Response: 111925
 Conc: 1.59 ng/ml

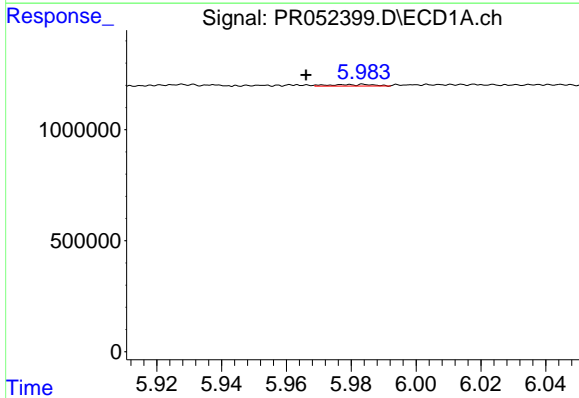


#17 AR-1242-2
 R.T.: 5.928 min
 Delta R.T.: 0.026 min
 Response: 105231
 Conc: 0.75 ng/ml

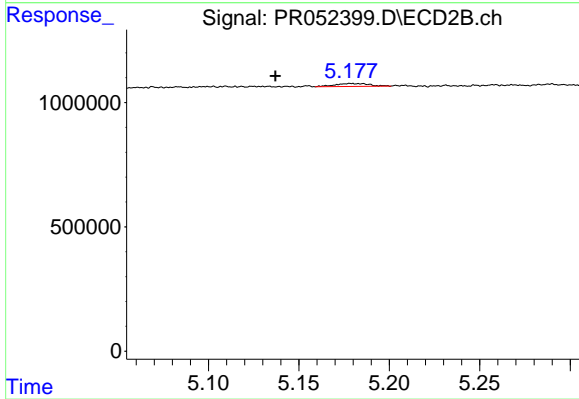
Instrument :
 ECD_R
 ClientSampleId :



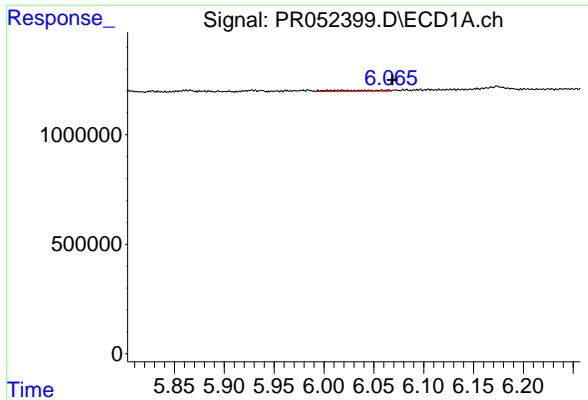
#17 AR-1242-2
 R.T.: 4.941 min
 Delta R.T.: -0.020 min
 Response: 111925
 Conc: 1.05 ng/ml



#18 AR-1242-3
 R.T.: 5.984 min
 Delta R.T.: 0.018 min
 Response: 66069
 Conc: 0.75 ng/ml



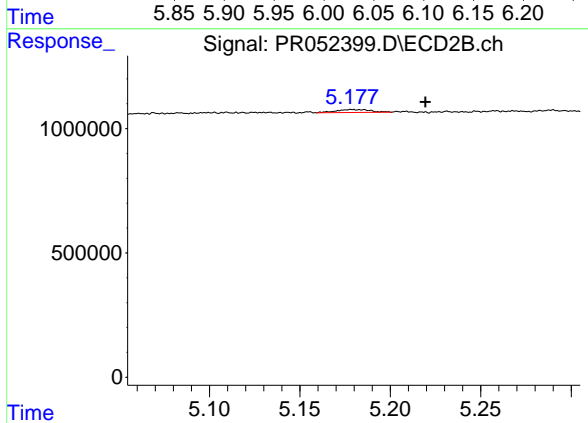
#18 AR-1242-3
 R.T.: 5.179 min
 Delta R.T.: 0.042 min
 Response: 156757
 Conc: 2.76 ng/ml



#19 AR-1242-4

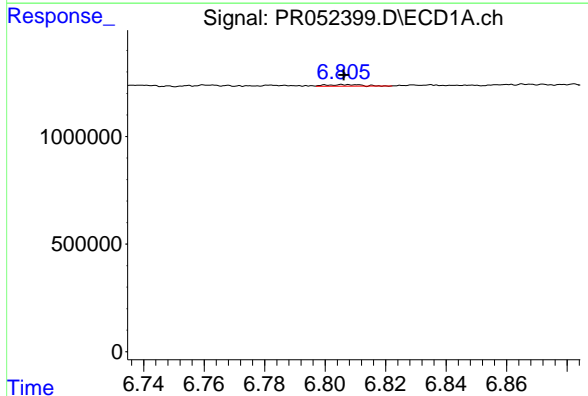
R.T.: 6.023 min
 Delta R.T.: -0.045 min
 Response: 181675
 Conc: 2.55 ng/ml

Instrument :
 ECD_R
 ClientSampleId :



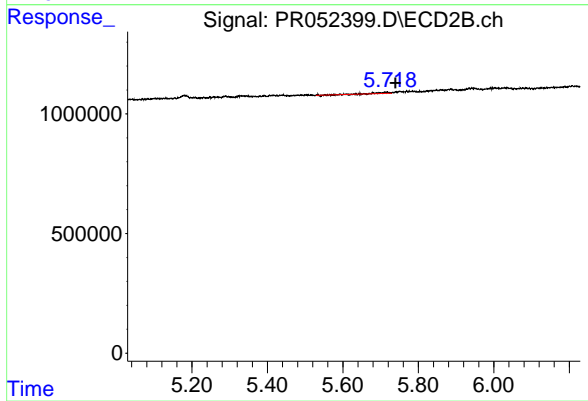
#19 AR-1242-4

R.T.: 5.179 min
 Delta R.T.: -0.041 min
 Response: 156757
 Conc: 2.91 ng/ml



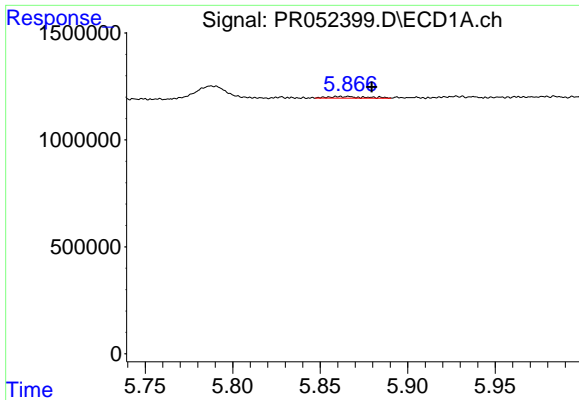
#20 AR-1242-5

R.T.: 6.807 min
 Delta R.T.: 0.000 min
 Response: 57497
 Conc: 0.75 ng/ml



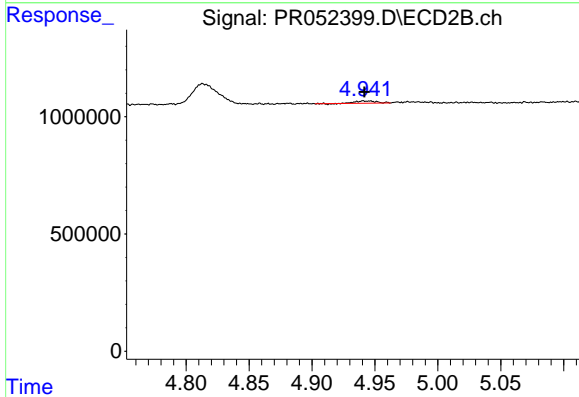
#20 AR-1242-5

R.T.: 5.718 min
 Delta R.T.: -0.021 min
 Response: 85762
 Conc: 1.25 ng/ml

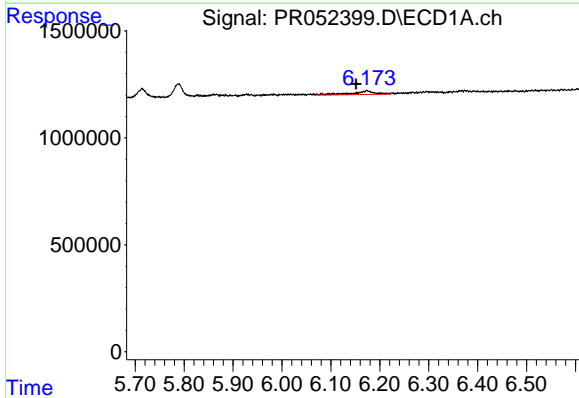


#21 AR-1248-1
 R.T.: 5.866 min
 Delta R.T.: -0.013 min
 Response: 111558
 Conc: 1.53 ng/ml

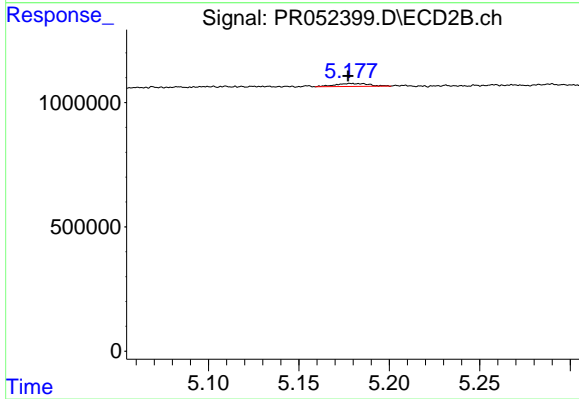
Instrument :
 ECD_R
 ClientSampleId :



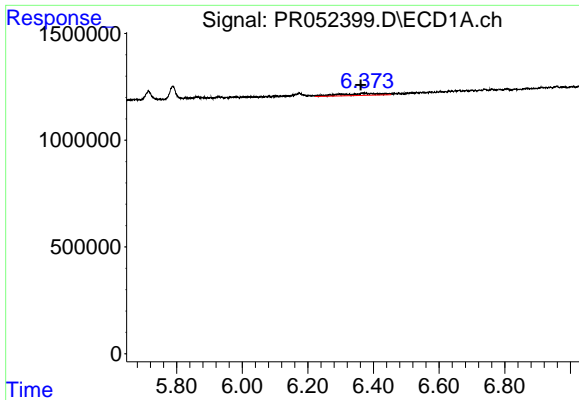
#21 AR-1248-1
 R.T.: 4.941 min
 Delta R.T.: 0.000 min
 Response: 111925
 Conc: 2.15 ng/ml



#22 AR-1248-2
 R.T.: 6.174 min
 Delta R.T.: 0.023 min
 Response: 569244
 Conc: 5.31 ng/ml



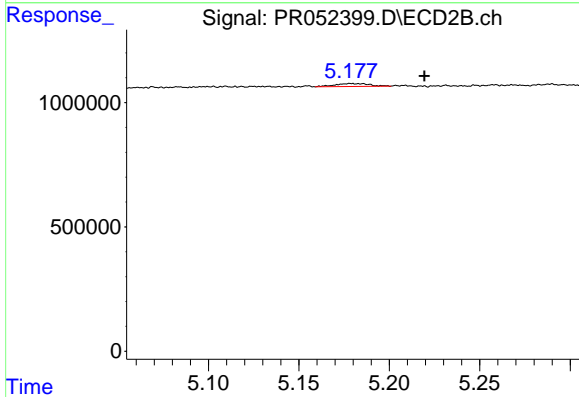
#22 AR-1248-2
 R.T.: 5.179 min
 Delta R.T.: 0.002 min
 Response: 156757
 Conc: 2.14 ng/ml



#23 AR-1248-3

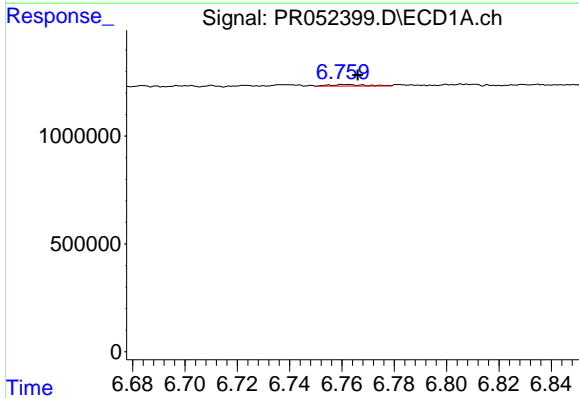
R.T.: 6.374 min
 Delta R.T.: 0.012 min
 Response: 815996
 Conc: 7.00 ng/ml

Instrument :
 ECD_R
 ClientSampleId :



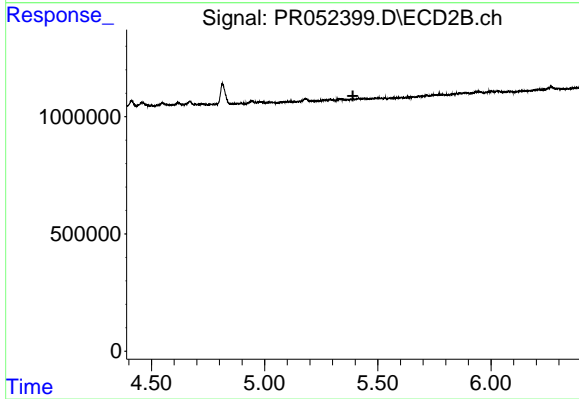
#23 AR-1248-3

R.T.: 5.179 min
 Delta R.T.: -0.041 min
 Response: 156757
 Conc: 2.01 ng/ml



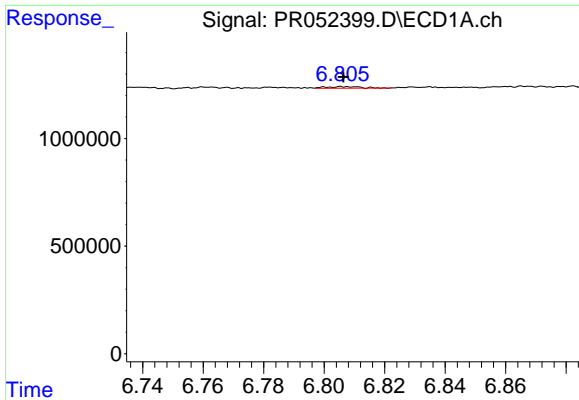
#24 AR-1248-4

R.T.: 6.762 min
 Delta R.T.: -0.004 min
 Response: 66339
 Conc: 0.52 ng/ml



#24 AR-1248-4

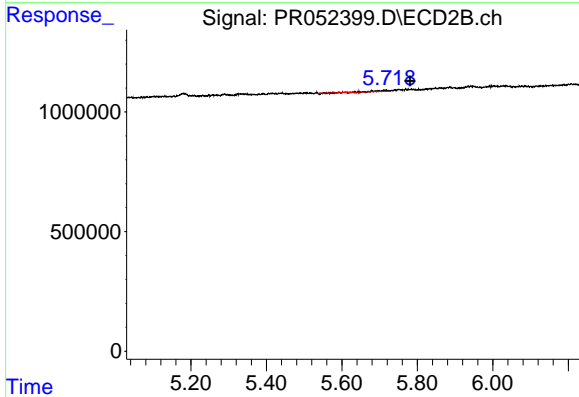
R.T.: 0.000 min
 Exp R.T.: 5.390 min
 Response: 0
 Conc: N.D.



#25 AR-1248-5

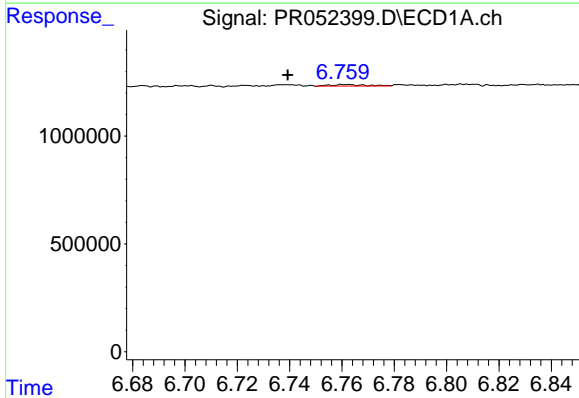
R.T.: 6.807 min
 Delta R.T.: 0.000 min
 Response: 57497
 Conc: 0.47 ng/ml

Instrument :
 ECD_R
 ClientSampleId :



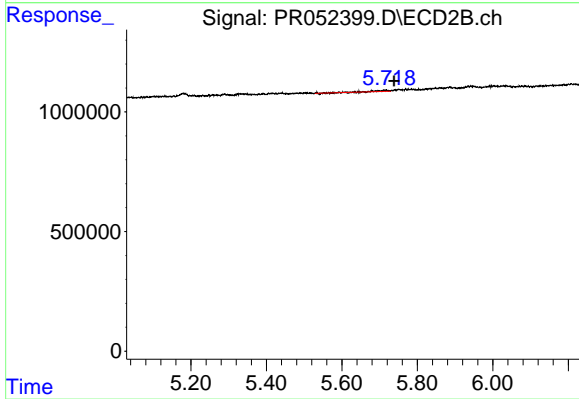
#25 AR-1248-5

R.T.: 5.718 min
 Delta R.T.: -0.063 min
 Response: 85762
 Conc: 0.91 ng/ml



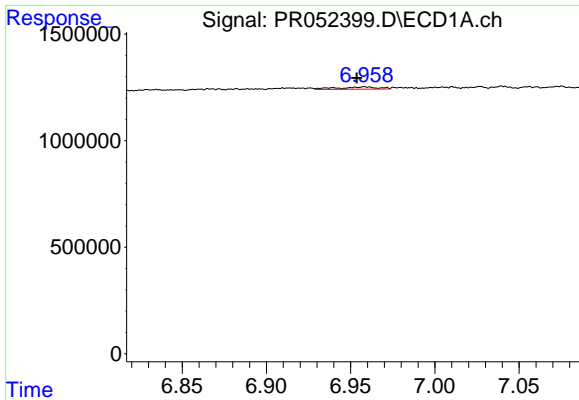
#26 AR-1254-1

R.T.: 6.762 min
 Delta R.T.: 0.022 min
 Response: 66339
 Conc: 0.50 ng/ml



#26 AR-1254-1

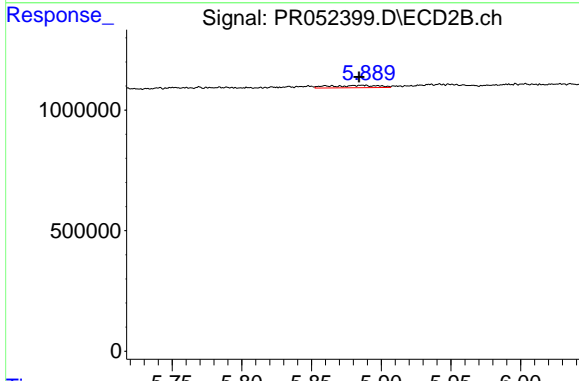
R.T.: 5.718 min
 Delta R.T.: -0.021 min
 Response: 85762
 Conc: 0.59 ng/ml



#27 AR-1254-2

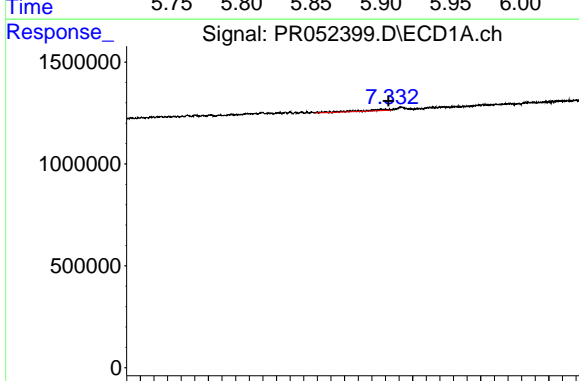
R.T.: 6.958 min
 Delta R.T.: 0.005 min
 Response: 182405
 Conc: 0.88 ng/ml

Instrument :
 ECD_R
 ClientSampleId :



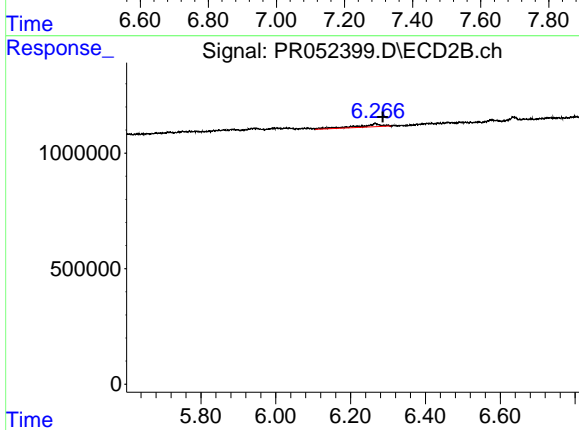
#27 AR-1254-2

R.T.: 5.886 min
 Delta R.T.: 0.002 min
 Response: 240714
 Conc: 1.92 ng/ml



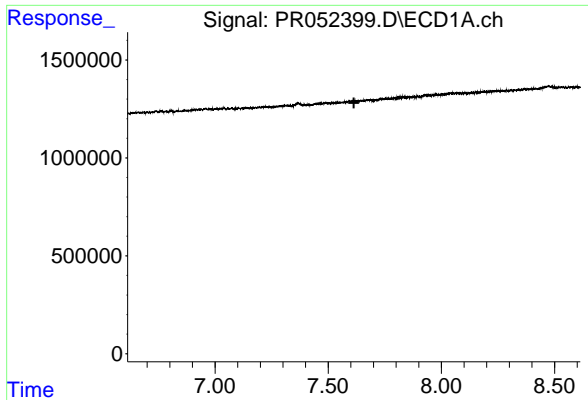
#28 AR-1254-3

R.T.: 7.309 min
 Delta R.T.: -0.021 min
 Response: 396456
 Conc: 1.89 ng/ml



#28 AR-1254-3

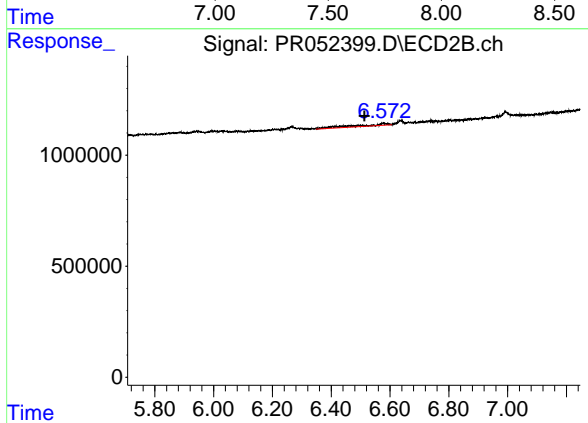
R.T.: 6.266 min
 Delta R.T.: -0.020 min
 Response: 579359
 Conc: 2.73 ng/ml



#29 AR-1254-4

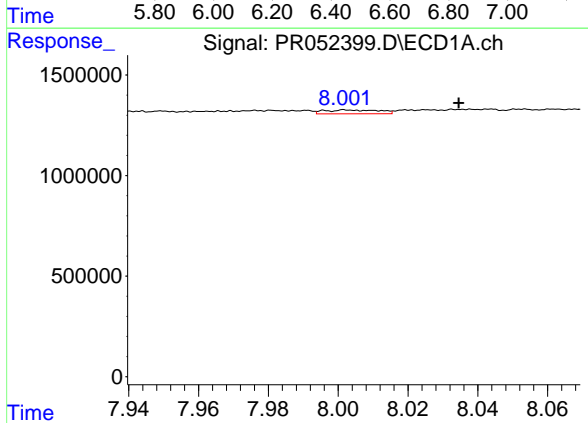
R.T.: 0.000 min
 Exp R.T.: 7.613 min
 Response: 0
 Conc: N.D.

Instrument :
 ECD_R
 ClientSampleId :



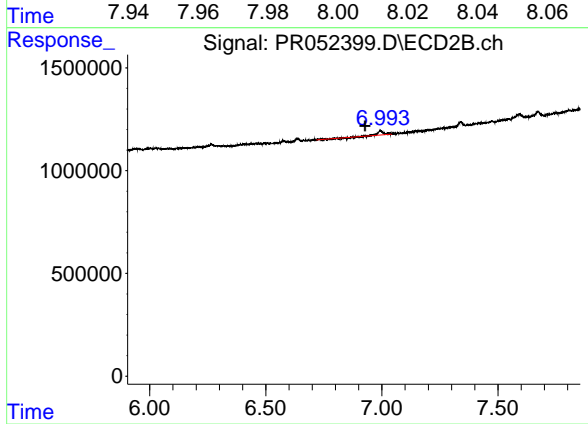
#29 AR-1254-4

R.T.: 6.578 min
 Delta R.T.: 0.066 min
 Response: 645682
 Conc: 5.00 ng/ml



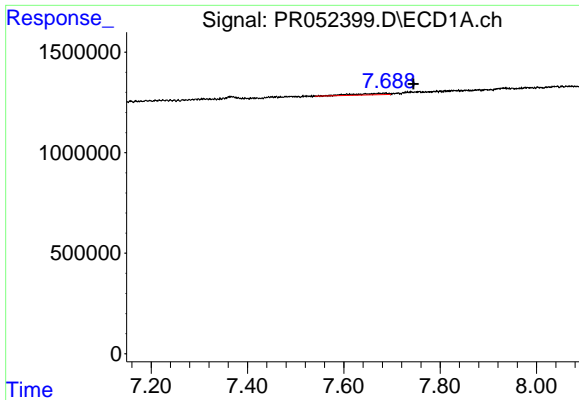
#30 AR-1254-5

R.T.: 8.004 min
 Delta R.T.: -0.031 min
 Response: 204786
 Conc: 1.19 ng/ml



#30 AR-1254-5

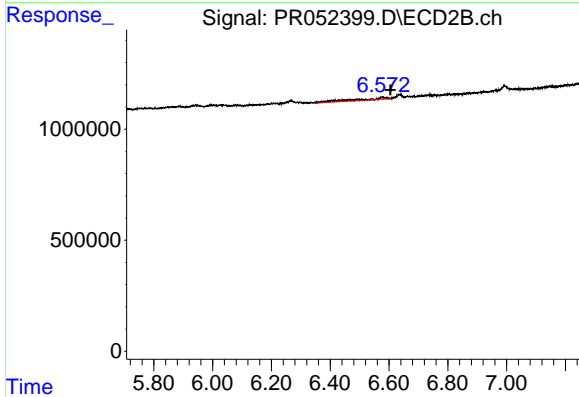
R.T.: 6.993 min
 Delta R.T.: 0.065 min
 Response: 271328
 Conc: 1.48 ng/ml



#32 AR-1260-2

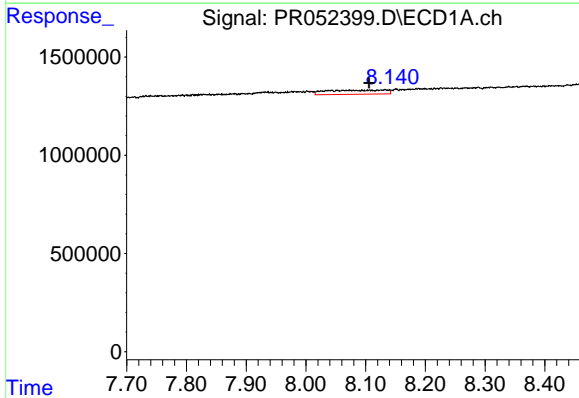
R.T.: 7.686 min
 Delta R.T.: -0.059 min
 Response: 341317
 Conc: 1.91 ng/ml

Instrument :
 ECD_R
 ClientSampleId :



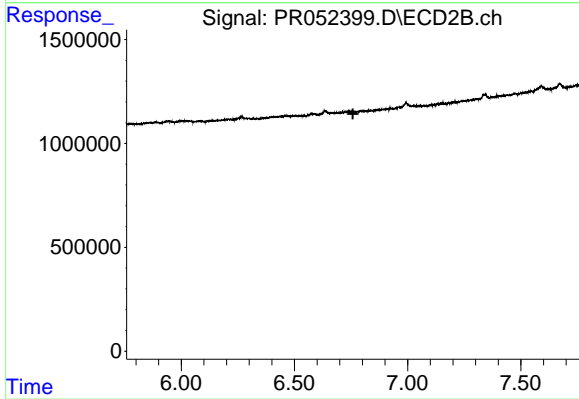
#32 AR-1260-2

R.T.: 6.578 min
 Delta R.T.: -0.026 min
 Response: 645682
 Conc: 4.31 ng/ml



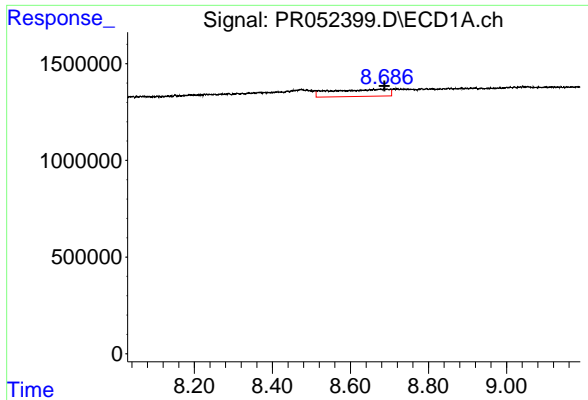
#33 AR-1260-3

R.T.: 8.133 min
 Delta R.T.: 0.027 min
 Response: 1425823
 Conc: 10.05 ng/ml



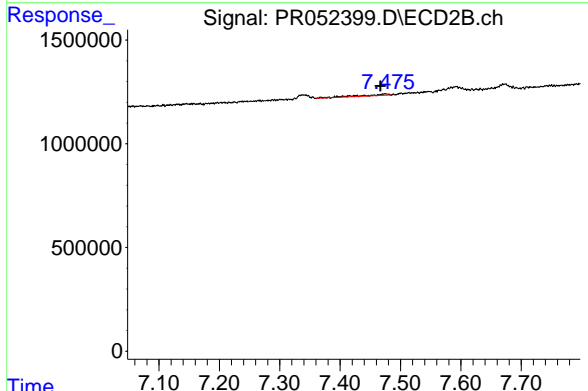
#33 AR-1260-3

R.T.: 0.000 min
 Exp R.T. : 6.758 min
 Response: 0
 Conc: N.D.

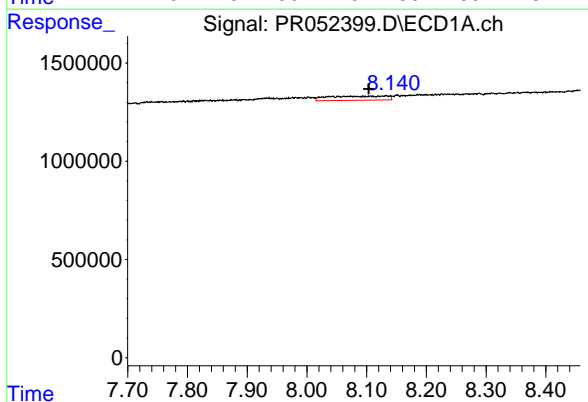


#35 AR-1260-5
 R.T.: 8.687 min
 Delta R.T.: 0.000 min
 Response: 3719794
 Conc: 11.48 ng/ml

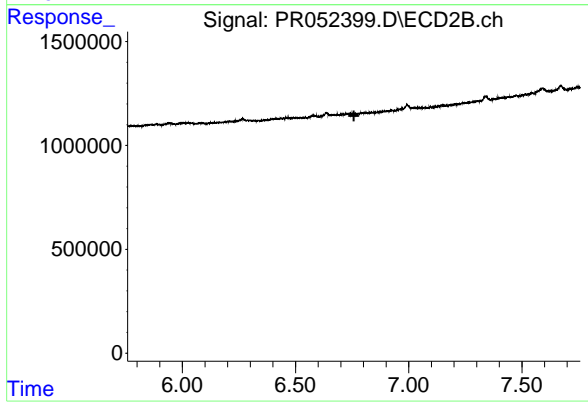
Instrument :
 ECD_R
 ClientSampleId :



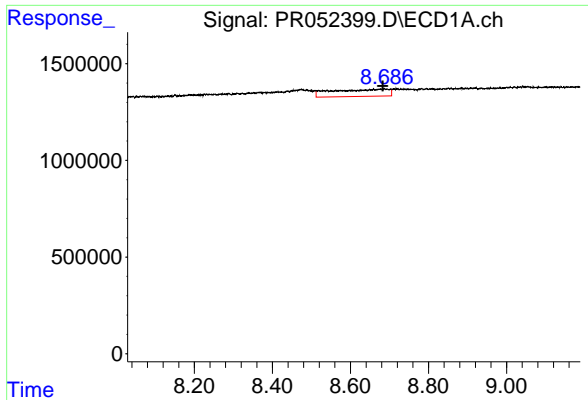
#35 AR-1260-5
 R.T.: 7.475 min
 Delta R.T.: 0.009 min
 Response: 224468
 Conc: 0.72 ng/ml



#36 AR-1262-1
 R.T.: 8.133 min
 Delta R.T.: 0.029 min
 Response: 1425823
 Conc: 6.90 ng/ml



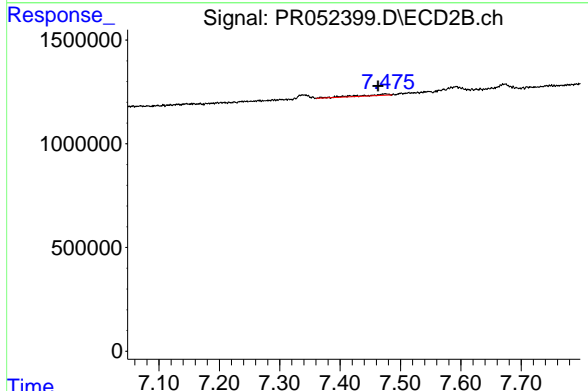
#36 AR-1262-1
 R.T.: 0.000 min
 Exp R.T. : 6.758 min
 Response: 0
 Conc: N.D.



#37 AR-1262-2

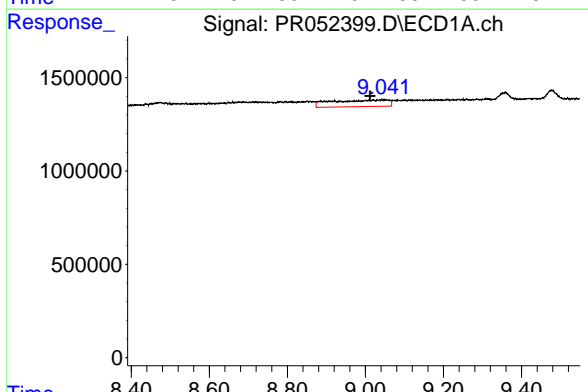
R.T.: 8.687 min
 Delta R.T.: 0.004 min
 Response: 3719794
 Conc: 9.89 ng/ml

Instrument :
 ECD_R
 ClientSampleId :



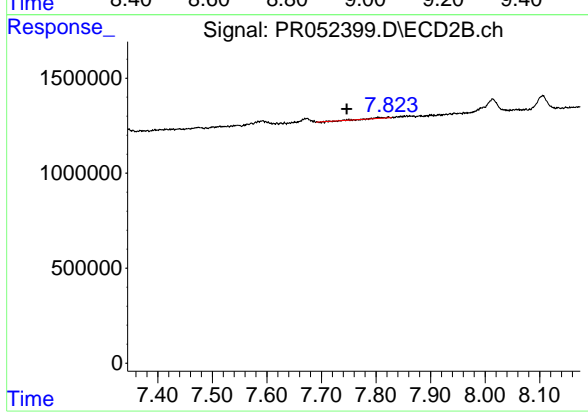
#37 AR-1262-2

R.T.: 7.475 min
 Delta R.T.: 0.012 min
 Response: 224468
 Conc: 0.66 ng/ml



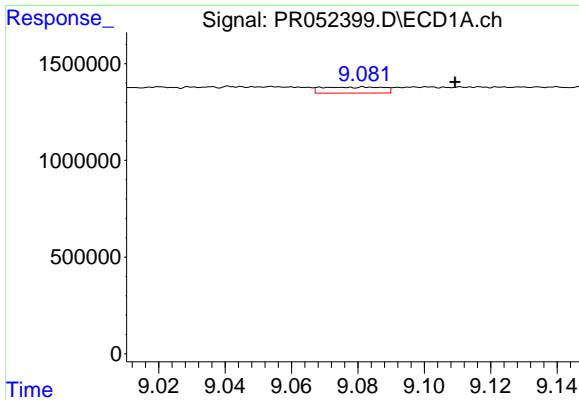
#38 AR-1262-3

R.T.: 9.054 min
 Delta R.T.: 0.042 min
 Response: 3563545
 Conc: 21.05 ng/ml



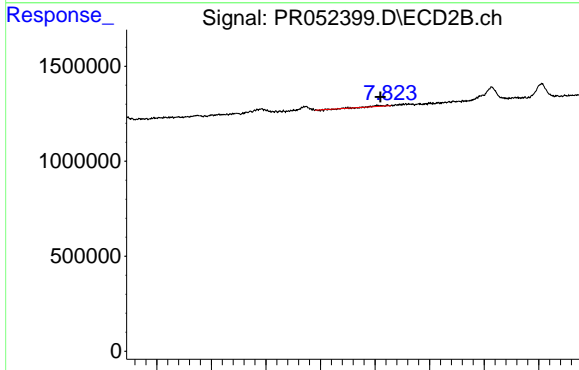
#38 AR-1262-3

R.T.: 7.804 min
 Delta R.T.: 0.058 min
 Response: 43023
 Conc: 0.31 ng/ml

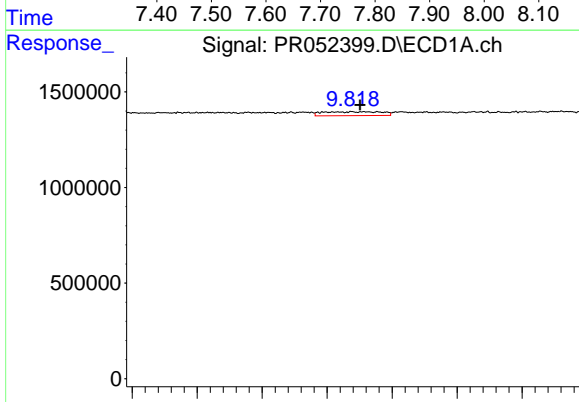


#39 AR-1262-4
 R.T.: 9.083 min
 Delta R.T.: -0.027 min
 Response: 402259
 Conc: 3.40 ng/ml

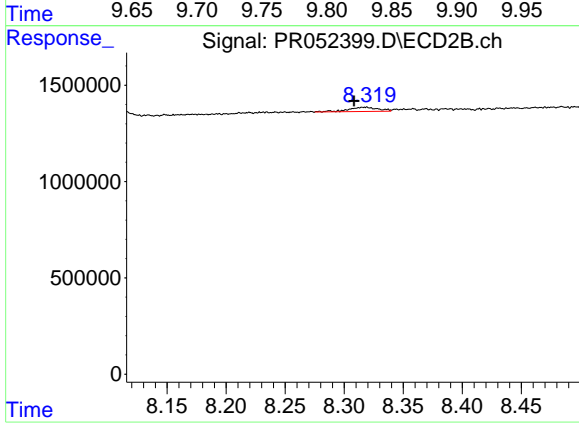
Instrument :
 ECD_R
 ClientSampleId :



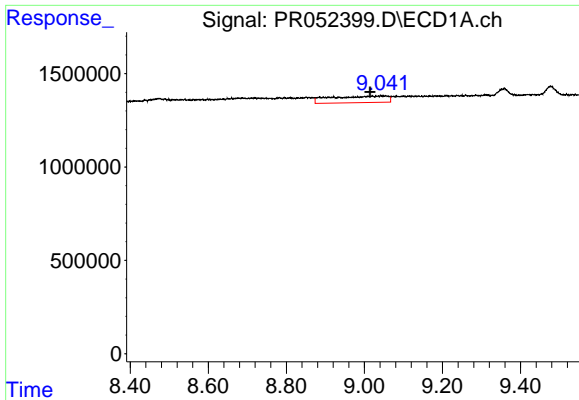
#39 AR-1262-4
 R.T.: 7.804 min
 Delta R.T.: -0.005 min
 Response: 43023
 Conc: 0.16 ng/ml



#40 AR-1262-5
 R.T.: 9.838 min
 Delta R.T.: 0.013 min
 Response: 637674
 Conc: 4.30 ng/ml

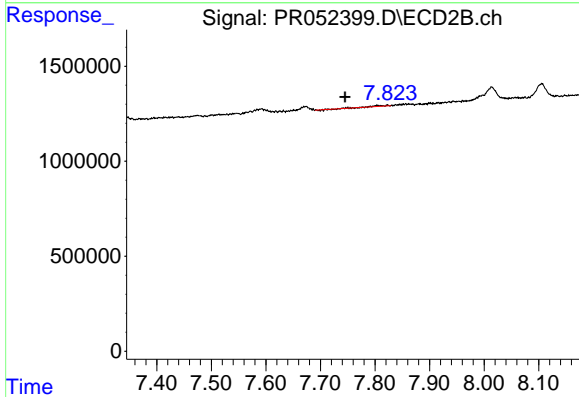


#40 AR-1262-5
 R.T.: 8.317 min
 Delta R.T.: 0.009 min
 Response: 374738
 Conc: 2.72 ng/ml

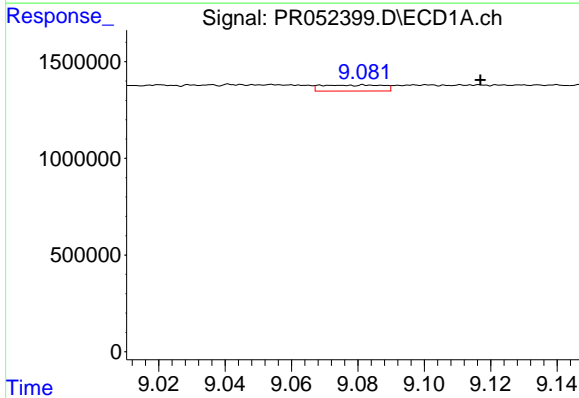


#41 AR-1268-1
 R.T.: 9.054 min
 Delta R.T.: 0.039 min
 Response: 3563545
 Conc: 8.02 ng/ml

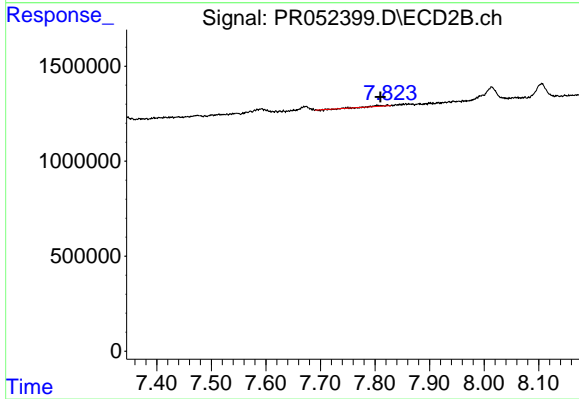
Instrument :
 ECD_R
 ClientSampleId :



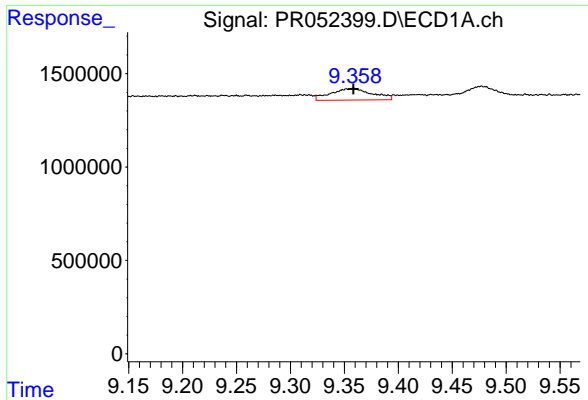
#41 AR-1268-1
 R.T.: 7.804 min
 Delta R.T.: 0.059 min
 Response: 43023
 Conc: 0.11 ng/ml



#42 AR-1268-2
 R.T.: 9.083 min
 Delta R.T.: -0.034 min
 Response: 402259
 Conc: 0.99 ng/ml



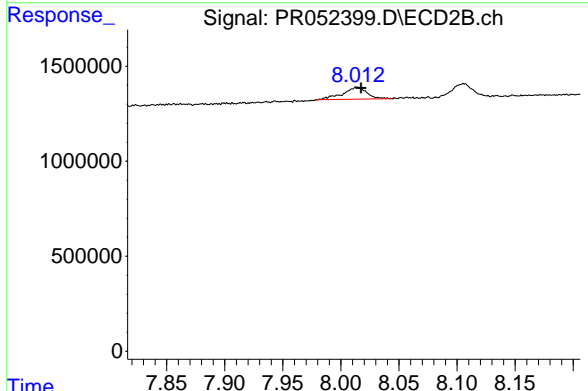
#42 AR-1268-2
 R.T.: 7.804 min
 Delta R.T.: -0.005 min
 Response: 43023
 Conc: 0.11 ng/ml



#43 AR-1268-3

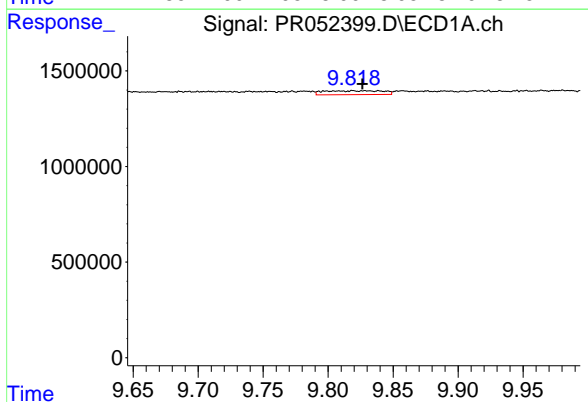
R.T.: 9.358 min
 Delta R.T.: 0.000 min
 Response: 1656161
 Conc: 4.73 ng/ml

Instrument :
 ECD_R
 ClientSampleId :



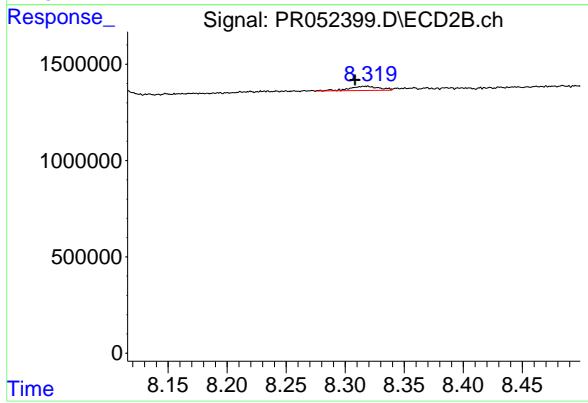
#43 AR-1268-3

R.T.: 8.014 min
 Delta R.T.: -0.004 min
 Response: 906358
 Conc: 2.66 ng/ml



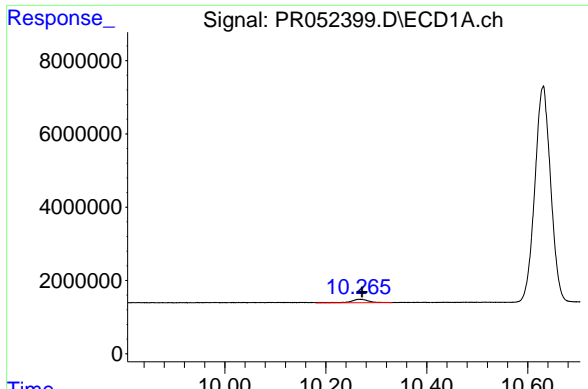
#44 AR-1268-4

R.T.: 9.838 min
 Delta R.T.: 0.012 min
 Response: 637674
 Conc: 3.91 ng/ml



#44 AR-1268-4

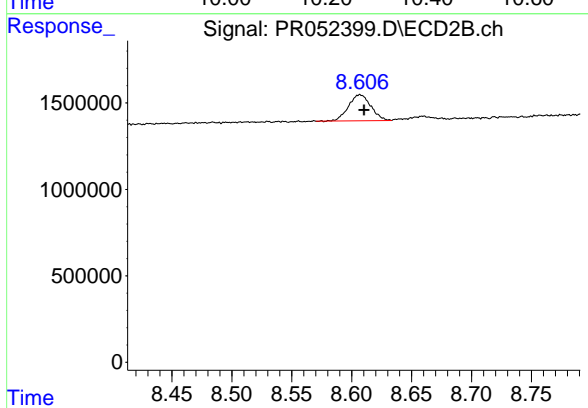
R.T.: 8.317 min
 Delta R.T.: 0.009 min
 Response: 374738
 Conc: 2.51 ng/ml



#45 AR-1268-5

R.T.: 10.268 min
Delta R.T.: -0.004 min
Response: 2358844
Conc: 2.07 ng/ml

Instrument :
ECD_R
ClientSampleId :



#45 AR-1268-5

R.T.: 8.607 min
Delta R.T.: -0.003 min
Response: 1955461
Conc: 1.65 ng/ml