

Data Path : Z:\pestpcbsrv\HPCHEM1\ECD\_R\Data\PR110124\  
 Data File : PR068974.D  
 Signal(s) : Signal #1: ECD1A.ch Signal #2: ECD2B.ch  
 Acq On : 01 Nov 2024 23:11  
 Operator : AJ\MA  
 Sample : P4627-20  
 Misc :  
 ALS Vial : 27 Sample Multiplier: 1

Instrument :  
 ECD\_R  
 ClientSampleId :

Integration File signal 1: autoint1.e  
 Integration File signal 2: autoint2.e  
 Quant Time: Nov 04 03:20:25 2024  
 Quant Method : Z:\pestpcbsrv\HPCHEM1\ECD\_R\Method\PR102924CLP.M  
 Quant Title : GC EXTRACTABLES  
 QLast Update : Tue Oct 29 14:51:31 2024  
 Response via : Initial Calibration  
 Integrator: ChemStation

Volume Inj. : 1 µl  
 Signal #1 Phase : ZB MR2 Signal #2 Phase: ZB MR2  
 Signal #1 Info : 30Mx0.32mmx 0.5µm Signal #2 Info : 30M x 0.32mm x 0.25µm

Compound	RT#1	RT#2	Resp#1	Resp#2	ng/ml	ng/ml
System Monitoring Compounds						
1) SA Tetrachlo...	3.644	2.975	16968291	113.6E6	17.068	18.930
2) SA Decachlor...	9.535	8.261	6958209	54244159	20.871	22.326
Target Compounds						
3) L1 AR-1016-1	4.818f	4.126	1107159	586097	37.522	3.163 #
4) L1 AR-1016-2	0.000	4.126	0	586097	N.D.	2.191 #
6) L1 AR-1016-4	0.000	4.376	0	598851	N.D.	5.079 #
7) L1 AR-1016-5	0.000	4.578	0	328641	N.D.	2.039 #
8) L2 AR-1221-1	0.000	3.256f	0	438864	N.D.	6.135 #
9) L2 AR-1221-2	0.000	3.279	0	1577472	N.D.	31.078 #
10) L2 AR-1221-3	0.000	3.407f	0	211137	N.D.	1.310 #
11) L3 AR-1232-1	0.000	3.407f	0	211137	N.D.	1.607 #
12) L3 AR-1232-2	0.000	4.126	0	586097	N.D.	4.848 #
14) L3 AR-1232-4	0.000	4.376	0	598851	N.D.	10.895 #
15) L3 AR-1232-5	0.000	4.578	0	328641	N.D.	5.197 #
16) L4 AR-1242-1	4.818f	4.126	1107159	586097	44.582	3.786 #
17) L4 AR-1242-2	0.000	4.126	0	586097	N.D.	2.646 #
19) L4 AR-1242-4	0.000	4.376	0	598851	N.D.	5.131 #
20) L4 AR-1242-5	0.000	4.937	0	713455	N.D.	3.891 #
21) L5 AR-1248-1	4.818f	4.126	1107159	586097	62.000	5.266 #
22) L5 AR-1248-2	0.000	4.376	0	598851	N.D.	3.768 #
23) L5 AR-1248-3	0.000	4.376	0	598851	N.D.	3.650 #
24) L5 AR-1248-4	0.000	4.578	0	328641	N.D.	1.548 #
25) L5 AR-1248-5	0.000	4.989	0	435502	N.D.	1.809 #
26) L6 AR-1254-1	0.000	4.937	0	713455	N.D.	2.003 #
27) L6 AR-1254-2	0.000	5.072	0	411899	N.D.	1.330 #
30) L6 AR-1254-5	0.000	6.170f	0	845207	N.D.	2.634 #
32) L7 AR-1260-2	0.000	5.883	0	975606	N.D.	2.921 #
33) L7 AR-1260-3	0.000	6.039	0	855724	N.D.	2.986 #
34) L7 AR-1260-4	0.000	6.572	0	1063534	N.D.	4.549 #
35) L7 AR-1260-5	0.000	6.814	0	472057	N.D.	0.874 #
37) L8 AR-1262-2	0.000	6.814	0	472057	N.D.	0.807 #
44) L9 AR-1268-4	0.000	7.645f	0	126345	N.D.	0.609 #
45) L9 AR-1268-5	0.000	8.014	0	561746	N.D.	0.350 #

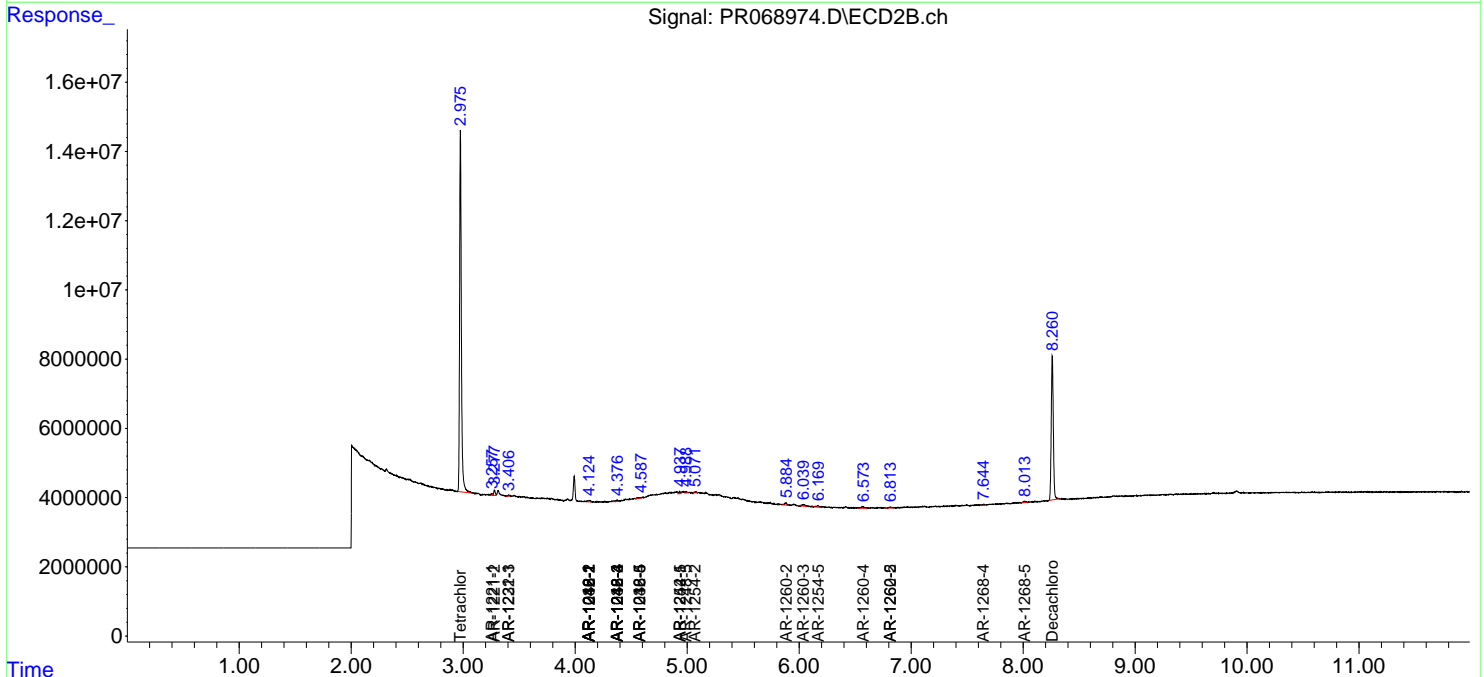
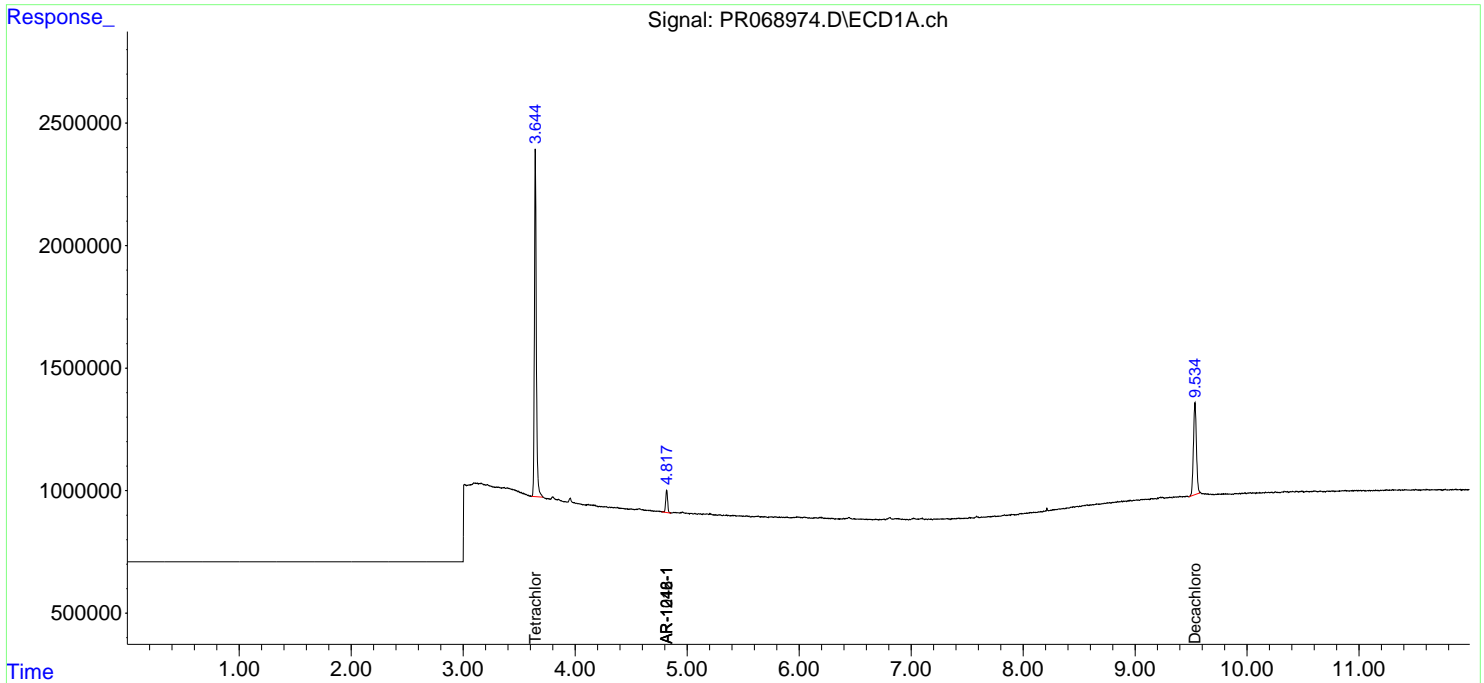
(f)=RT Delta > 1/2 Window (#)=Amounts differ by > 25% (m)=manual int.

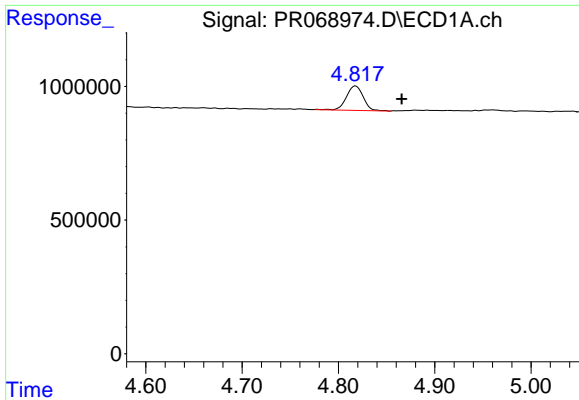
Data Path : Z:\pestpcbsrv\HPCHEM1\ECD\_R\Data\PR110124\  
 Data File : PR068974.D  
 Signal(s) : Signal #1: ECD1A.ch Signal #2: ECD2B.ch  
 Acq On : 01 Nov 2024 23:11  
 Operator : AJ\MA  
 Sample : P4627-20  
 Misc :  
 ALS Vial : 27 Sample Multiplier: 1

Instrument :  
 ECD\_R  
 ClientSampleId :

Integration File signal 1: autoint1.e  
 Integration File signal 2: autoint2.e  
 Quant Time: Nov 04 03:20:25 2024  
 Quant Method : Z:\pestpcbsrv\HPCHEM1\ECD\_R\Method\PR102924CLP.M  
 Quant Title : GC EXTRACTABLES  
 QLast Update : Tue Oct 29 14:51:31 2024  
 Response via : Initial Calibration  
 Integrator: ChemStation

Volume Inj. : 1 µl  
 Signal #1 Phase : ZB MR1 Signal #2 Phase: ZB MR2  
 Signal #1 Info : 30Mx0.32mmx 0.5µm Signal #2 Info : 30M x 0.32mm x 0.25µm

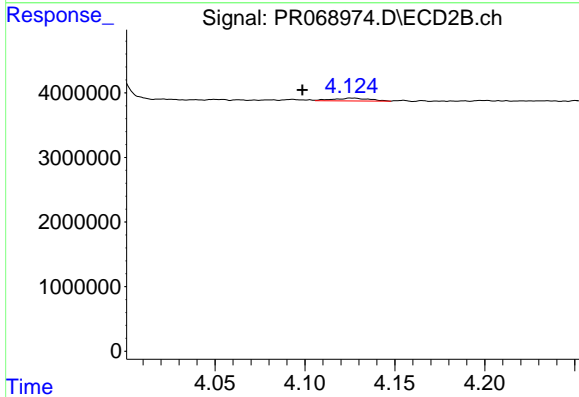




#3 AR-1016-1

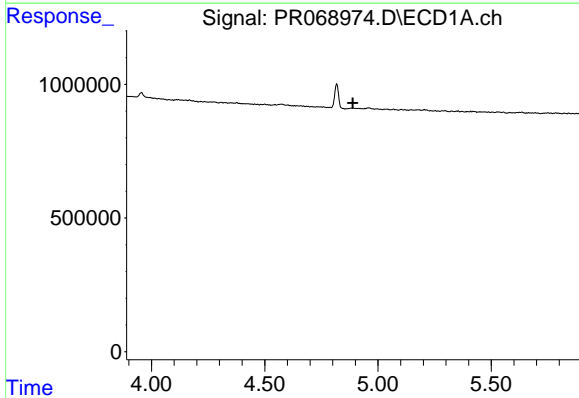
R.T.: 4.818 min  
 Delta R.T.: -0.048 min  
 Response: 1107159  
 Conc: 37.52 ng/ml

Instrument :  
 ECD\_R  
 ClientSampleId :



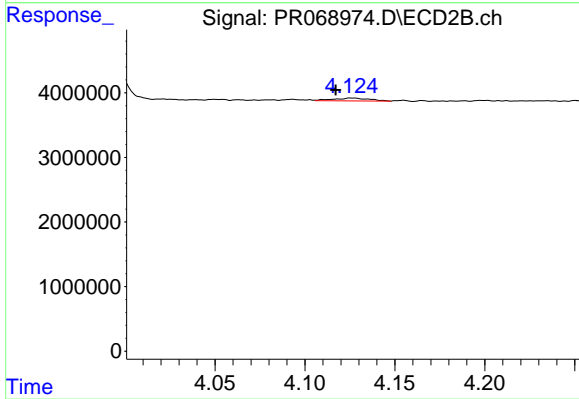
#3 AR-1016-1

R.T.: 4.126 min  
 Delta R.T.: 0.028 min  
 Response: 586097  
 Conc: 3.16 ng/ml



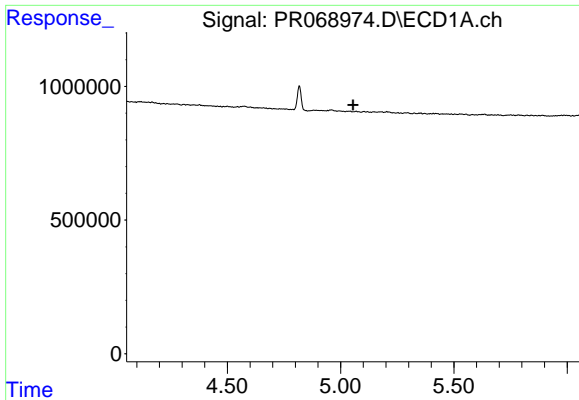
#4 AR-1016-2

R.T.: 0.000 min  
 Exp R.T. : 4.888 min  
 Response: 0  
 Conc: N.D.



#4 AR-1016-2

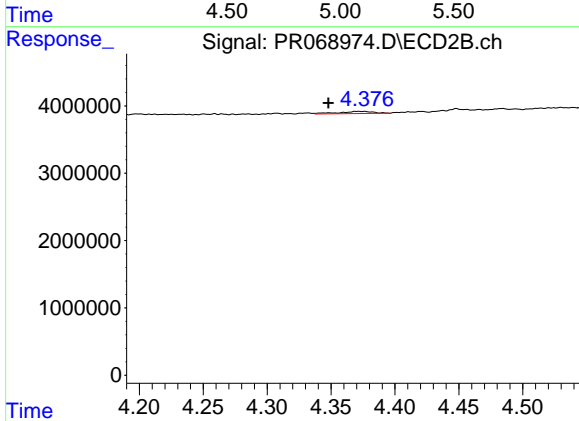
R.T.: 4.126 min  
 Delta R.T.: 0.009 min  
 Response: 586097  
 Conc: 2.19 ng/ml



#6 AR-1016-4

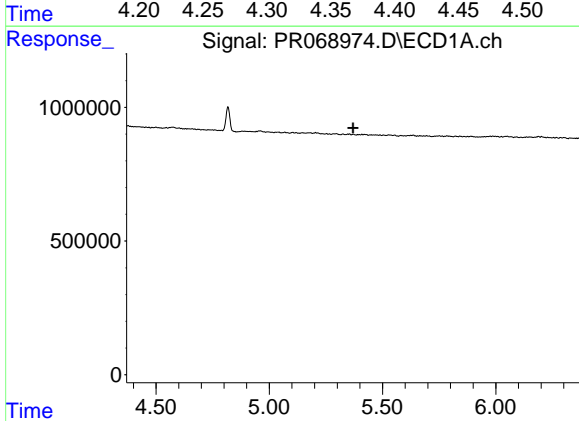
R.T.: 0.000 min  
 Exp R.T.: 5.055 min  
 Response: 0  
 Conc: N.D.

Instrument :  
 ECD\_R  
 ClientSampleId :



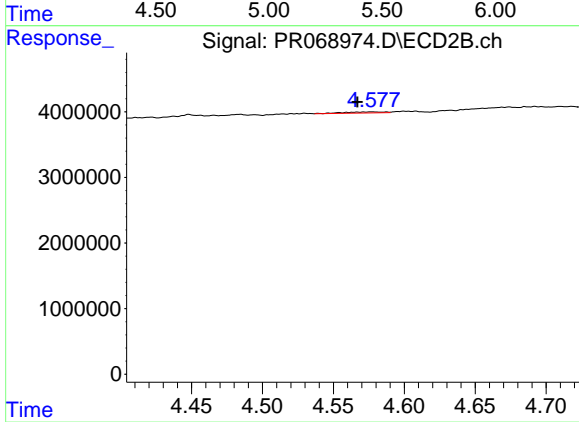
#6 AR-1016-4

R.T.: 4.376 min  
 Delta R.T.: 0.028 min  
 Response: 598851  
 Conc: 5.08 ng/ml



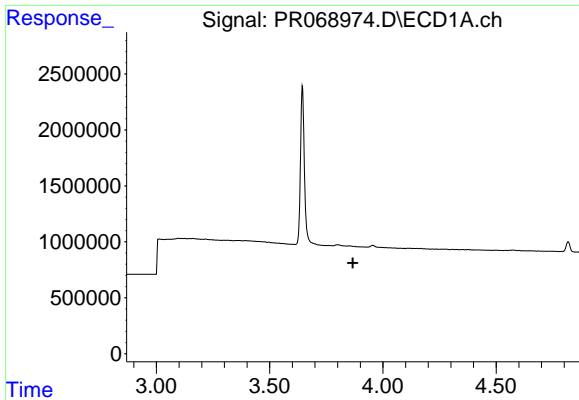
#7 AR-1016-5

R.T.: 0.000 min  
 Exp R.T.: 5.370 min  
 Response: 0  
 Conc: N.D.



#7 AR-1016-5

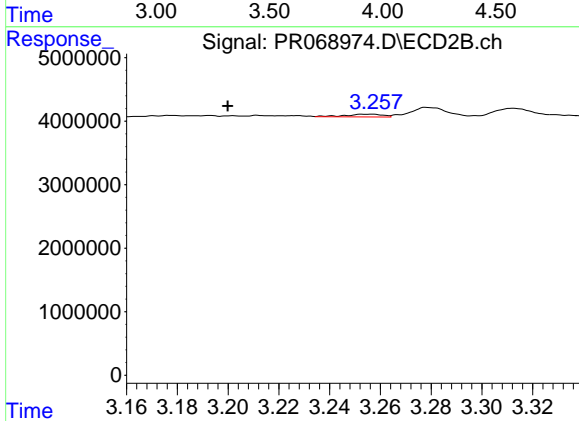
R.T.: 4.578 min  
 Delta R.T.: 0.011 min  
 Response: 328641  
 Conc: 2.04 ng/ml



#8 AR-1221-1

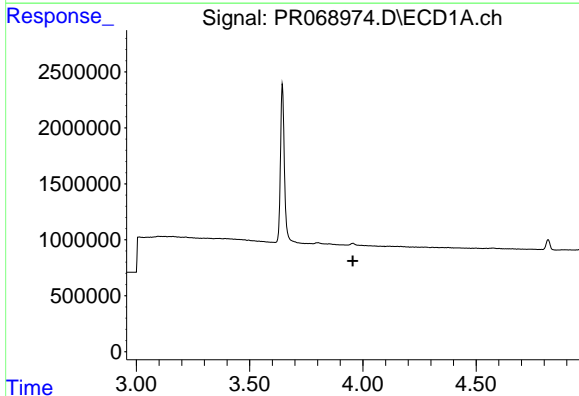
R.T.: 0.000 min  
 Exp R.T.: 3.867 min  
 Response: 0  
 Conc: N.D.

Instrument :  
 ECD\_R  
 ClientSampleId :



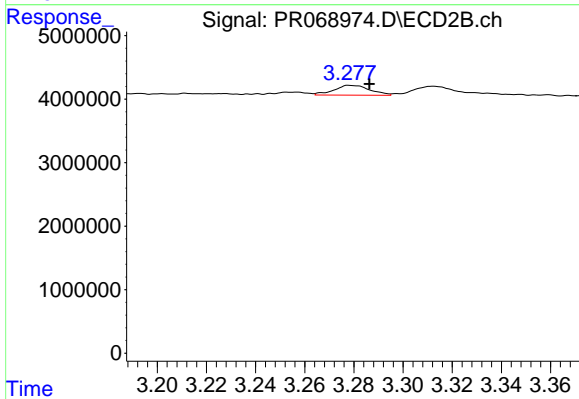
#8 AR-1221-1

R.T.: 3.256 min  
 Delta R.T.: 0.056 min  
 Response: 438864  
 Conc: 6.14 ng/ml



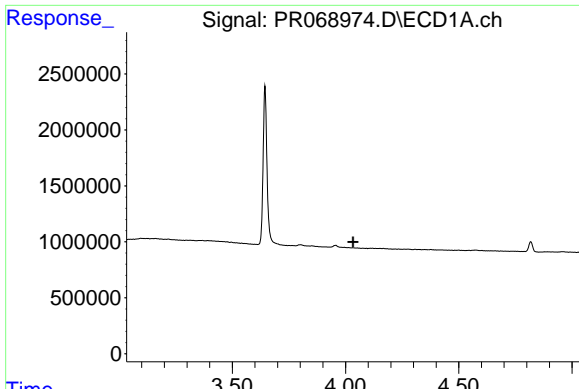
#9 AR-1221-2

R.T.: 0.000 min  
 Exp R.T.: 3.955 min  
 Response: 0  
 Conc: N.D.



#9 AR-1221-2

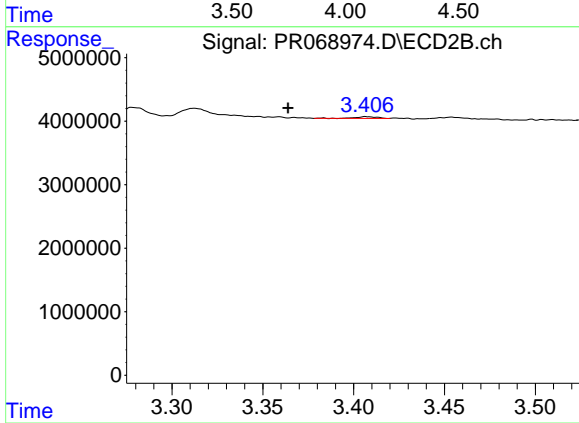
R.T.: 3.279 min  
 Delta R.T.: -0.008 min  
 Response: 1577472  
 Conc: 31.08 ng/ml



#10 AR-1221-3

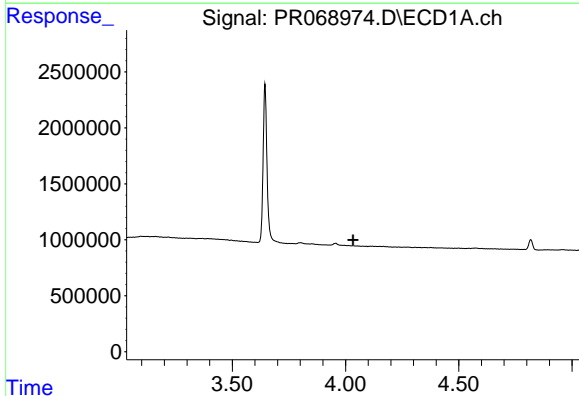
R.T.: 0.000 min  
 Exp R.T. : 4.033 min  
 Response: 0  
 Conc: N.D.

Instrument :  
 ECD\_R  
 ClientSampleId :



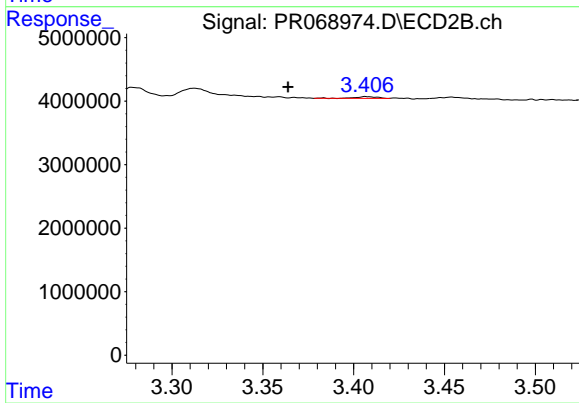
#10 AR-1221-3

R.T.: 3.407 min  
 Delta R.T.: 0.043 min  
 Response: 211137  
 Conc: 1.31 ng/ml



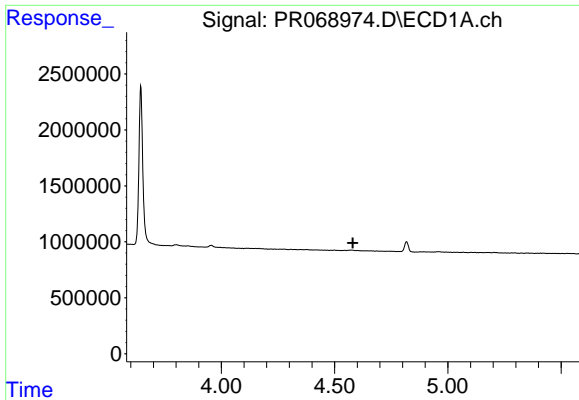
#11 AR-1232-1

R.T.: 0.000 min  
 Exp R.T. : 4.033 min  
 Response: 0  
 Conc: N.D.



#11 AR-1232-1

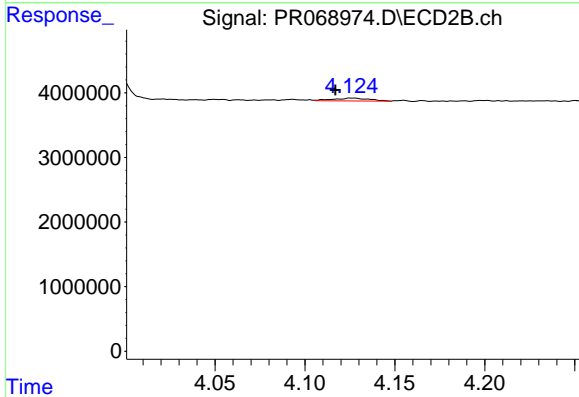
R.T.: 3.407 min  
 Delta R.T.: 0.043 min  
 Response: 211137  
 Conc: 1.61 ng/ml



#12 AR-1232-2

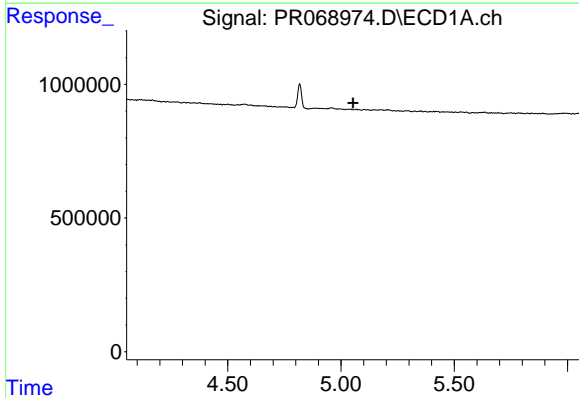
R.T.: 0.000 min  
 Exp R.T. : 4.580 min  
 Response: 0  
 Conc: N.D.

Instrument :  
 ECD\_R  
 ClientSampleId :



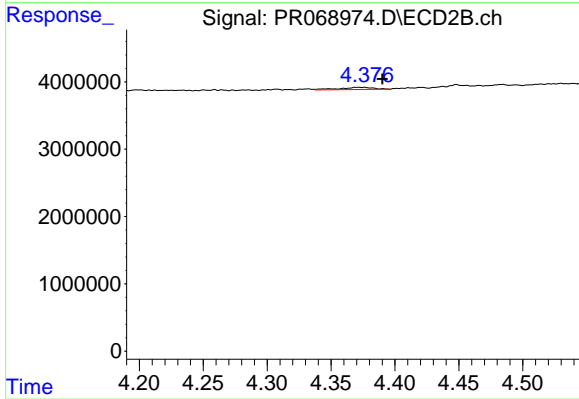
#12 AR-1232-2

R.T.: 4.126 min  
 Delta R.T.: 0.009 min  
 Response: 586097  
 Conc: 4.85 ng/ml



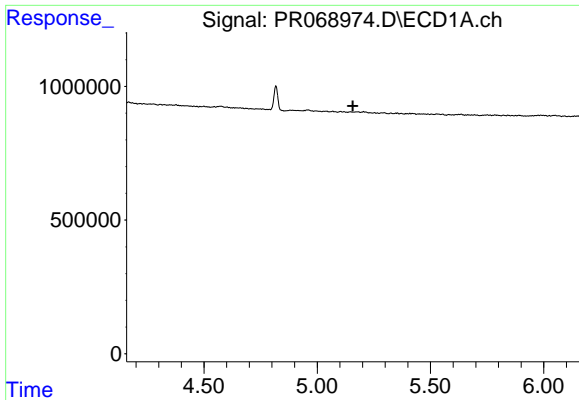
#14 AR-1232-4

R.T.: 0.000 min  
 Exp R.T. : 5.053 min  
 Response: 0  
 Conc: N.D.



#14 AR-1232-4

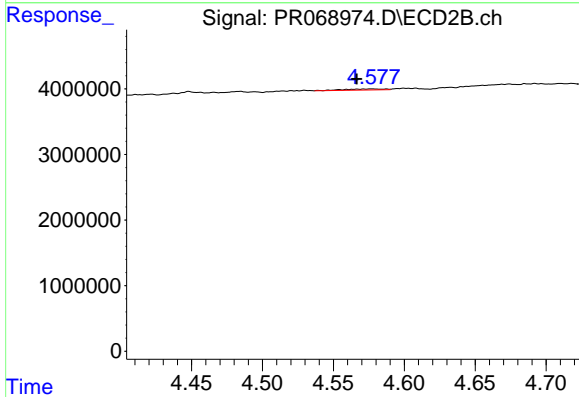
R.T.: 4.376 min  
 Delta R.T.: -0.014 min  
 Response: 598851  
 Conc: 10.89 ng/ml



#15 AR-1232-5

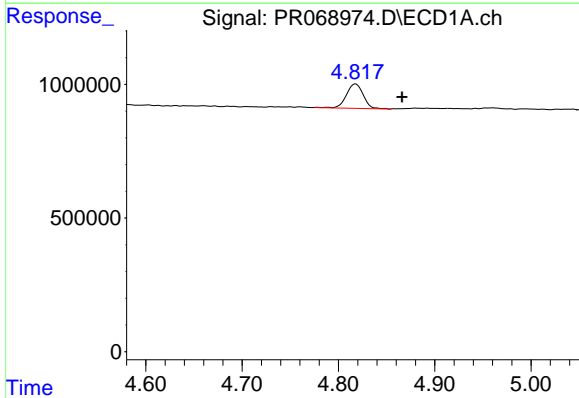
R.T.: 0.000 min  
 Exp R.T.: 5.157 min  
 Response: 0  
 Conc: N.D.

Instrument :  
 ECD\_R  
 ClientSampleId :



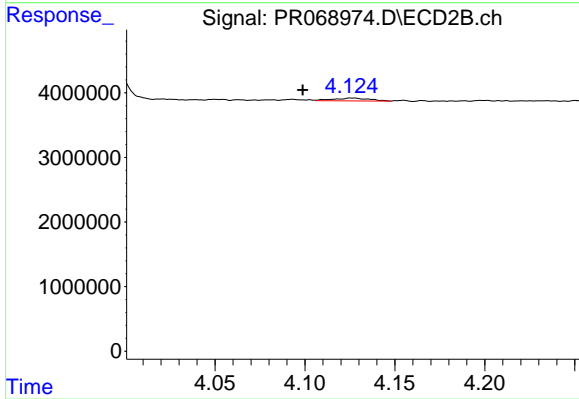
#15 AR-1232-5

R.T.: 4.578 min  
 Delta R.T.: 0.011 min  
 Response: 328641  
 Conc: 5.20 ng/ml



#16 AR-1242-1

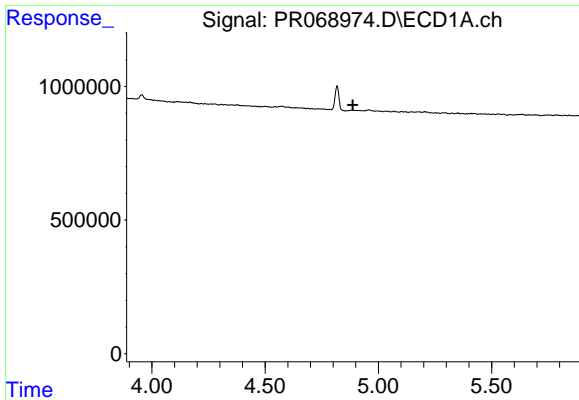
R.T.: 4.818 min  
 Delta R.T.: -0.048 min  
 Response: 1107159  
 Conc: 44.58 ng/ml



#16 AR-1242-1

R.T.: 4.126 min  
 Delta R.T.: 0.028 min  
 Response: 586097  
 Conc: 3.79 ng/ml

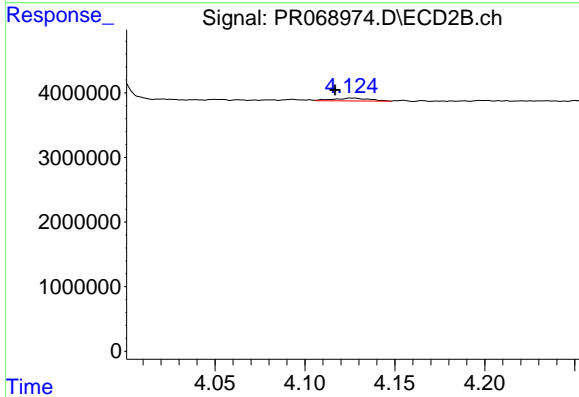




#17 AR-1242-2

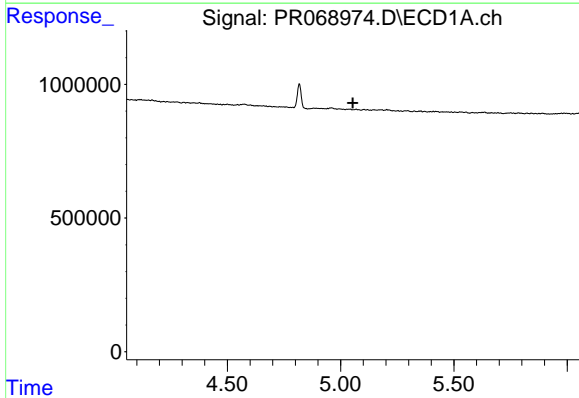
R.T.: 0.000 min  
 Exp R.T. : 4.888 min  
 Response: 0  
 Conc: N.D.

Instrument :  
 ECD\_R  
 ClientSampleId :



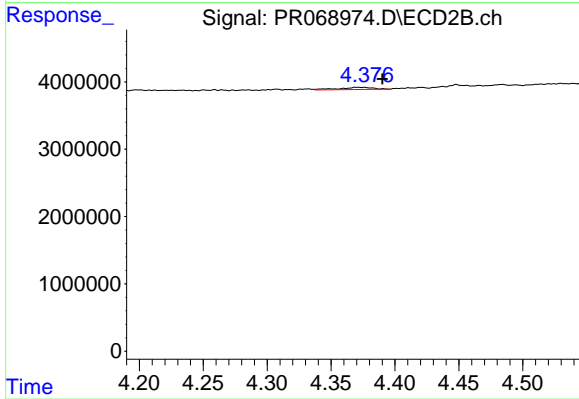
#17 AR-1242-2

R.T.: 4.126 min  
 Delta R.T.: 0.010 min  
 Response: 586097  
 Conc: 2.65 ng/ml



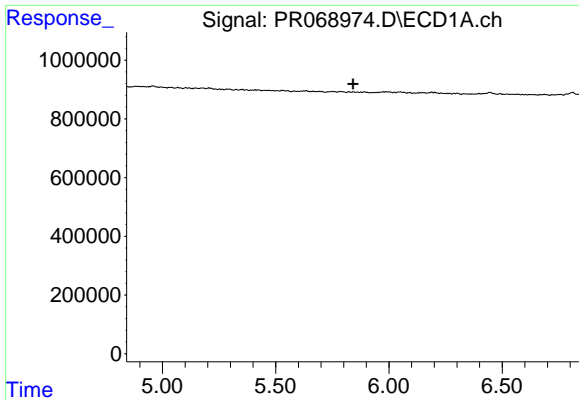
#19 AR-1242-4

R.T.: 0.000 min  
 Exp R.T. : 5.054 min  
 Response: 0  
 Conc: N.D.



#19 AR-1242-4

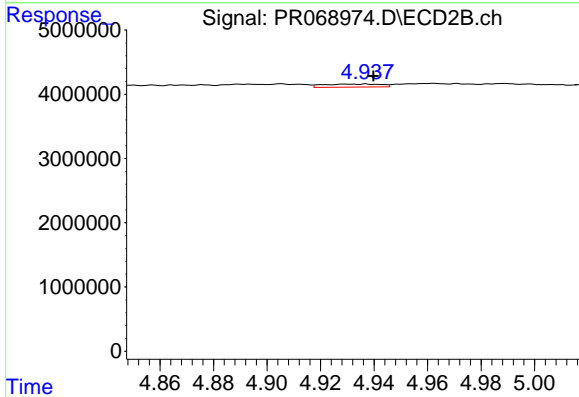
R.T.: 4.376 min  
 Delta R.T.: -0.014 min  
 Response: 598851  
 Conc: 5.13 ng/ml



#20 AR-1242-5

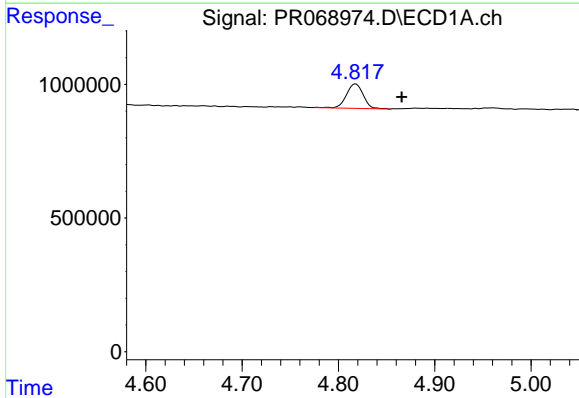
R.T.: 0.000 min  
 Exp R.T.: 5.841 min  
 Response: 0  
 Conc: N.D.

Instrument :  
 ECD\_R  
 ClientSampleId :



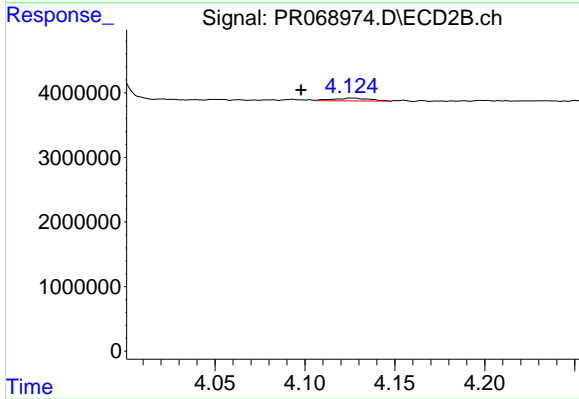
#20 AR-1242-5

R.T.: 4.937 min  
 Delta R.T.: -0.003 min  
 Response: 713455  
 Conc: 3.89 ng/ml



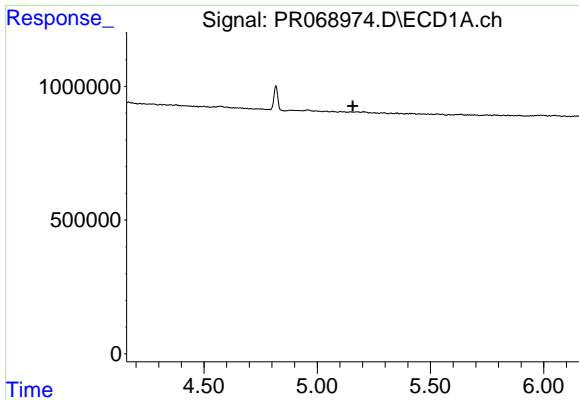
#21 AR-1248-1

R.T.: 4.818 min  
 Delta R.T.: -0.048 min  
 Response: 1107159  
 Conc: 62.00 ng/ml



#21 AR-1248-1

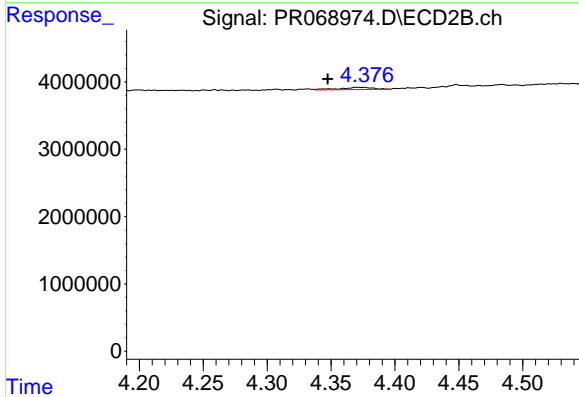
R.T.: 4.126 min  
 Delta R.T.: 0.029 min  
 Response: 586097  
 Conc: 5.27 ng/ml



#22 AR-1248-2

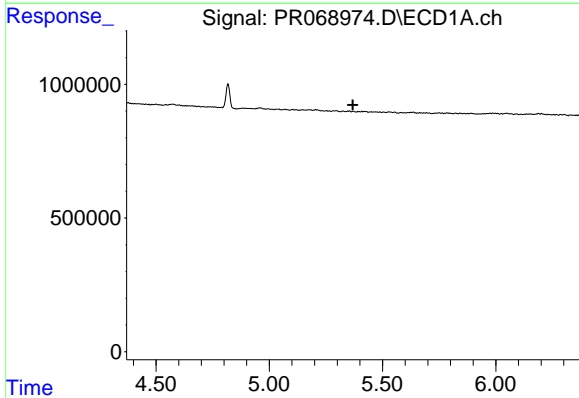
R.T.: 0.000 min  
 Exp R.T.: 5.157 min  
 Response: 0  
 Conc: N.D.

Instrument :  
 ECD\_R  
 ClientSampleId :



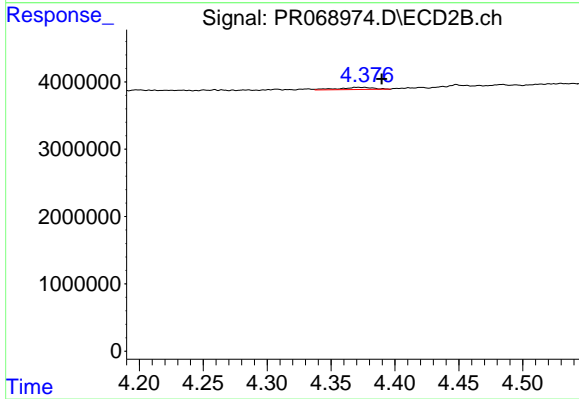
#22 AR-1248-2

R.T.: 4.376 min  
 Delta R.T.: 0.028 min  
 Response: 598851  
 Conc: 3.77 ng/ml



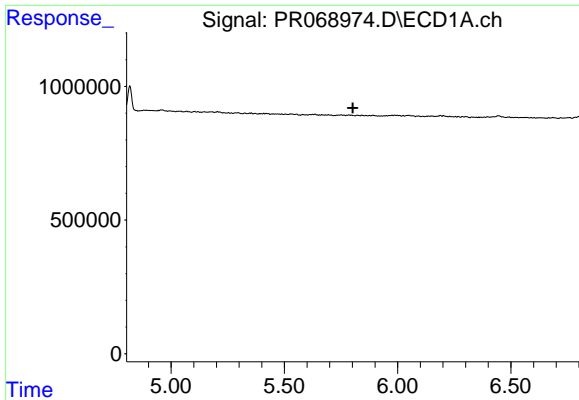
#23 AR-1248-3

R.T.: 0.000 min  
 Exp R.T.: 5.368 min  
 Response: 0  
 Conc: N.D.



#23 AR-1248-3

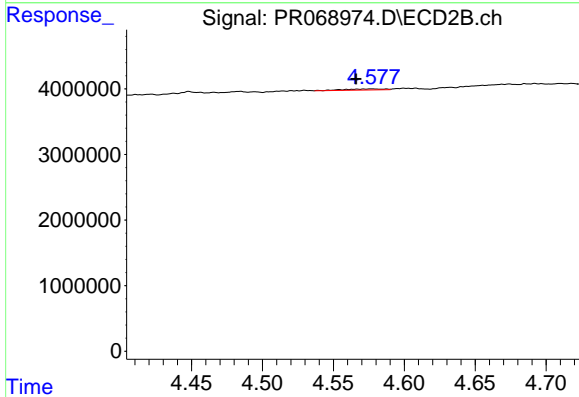
R.T.: 4.376 min  
 Delta R.T.: -0.014 min  
 Response: 598851  
 Conc: 3.65 ng/ml



#24 AR-1248-4

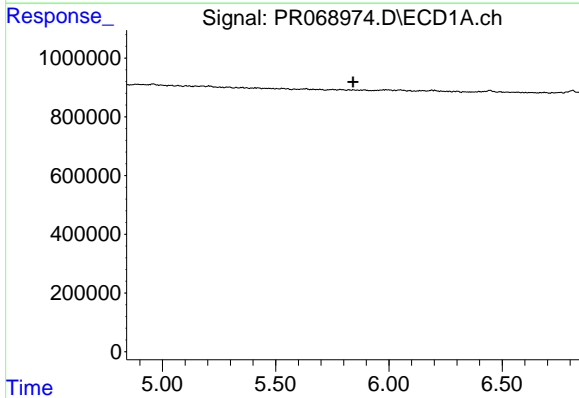
R.T.: 0.000 min  
 Exp R.T.: 5.802 min  
 Response: 0  
 Conc: N.D.

Instrument :  
 ECD\_R  
 ClientSampleId :



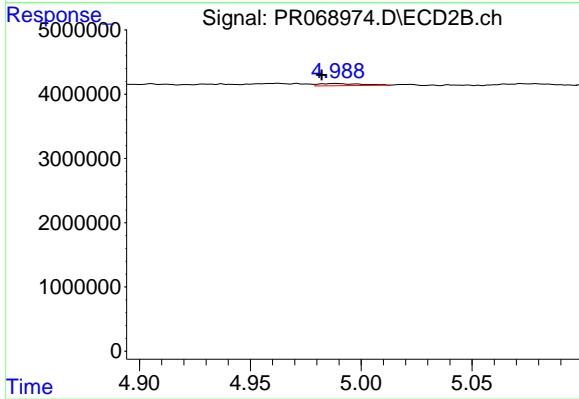
#24 AR-1248-4

R.T.: 4.578 min  
 Delta R.T.: 0.011 min  
 Response: 328641  
 Conc: 1.55 ng/ml



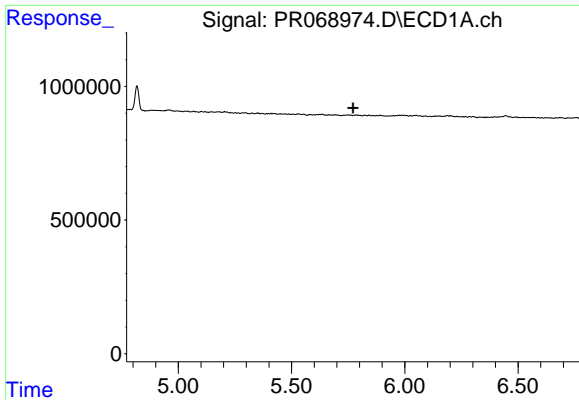
#25 AR-1248-5

R.T.: 0.000 min  
 Exp R.T.: 5.841 min  
 Response: 0  
 Conc: N.D.



#25 AR-1248-5

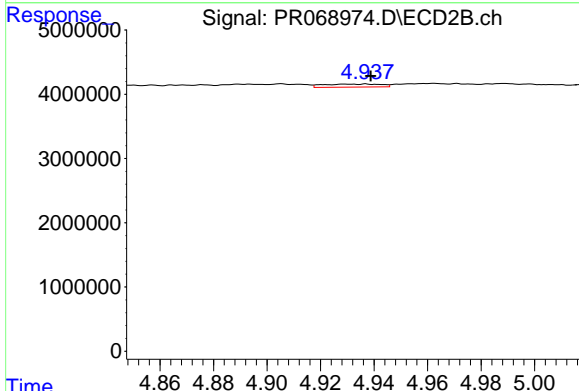
R.T.: 4.989 min  
 Delta R.T.: 0.006 min  
 Response: 435502  
 Conc: 1.81 ng/ml



#26 AR-1254-1

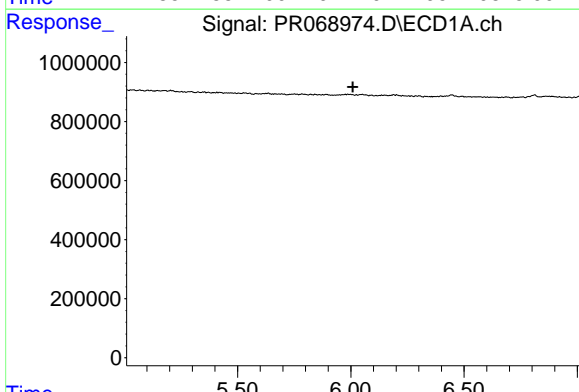
R.T.: 0.000 min  
 Exp R.T.: 5.771 min  
 Response: 0  
 Conc: N.D.

Instrument :  
 ECD\_R  
 ClientSampleId :



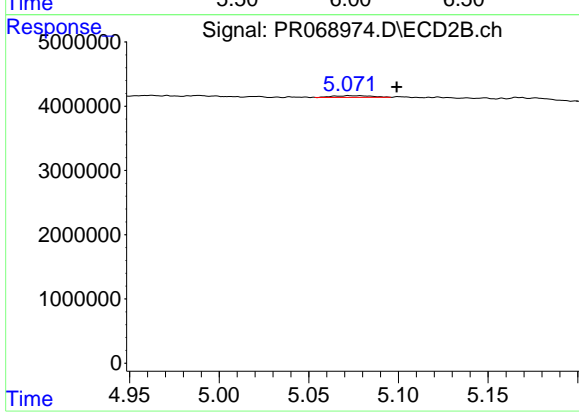
#26 AR-1254-1

R.T.: 4.937 min  
 Delta R.T.: -0.002 min  
 Response: 713455  
 Conc: 2.00 ng/ml



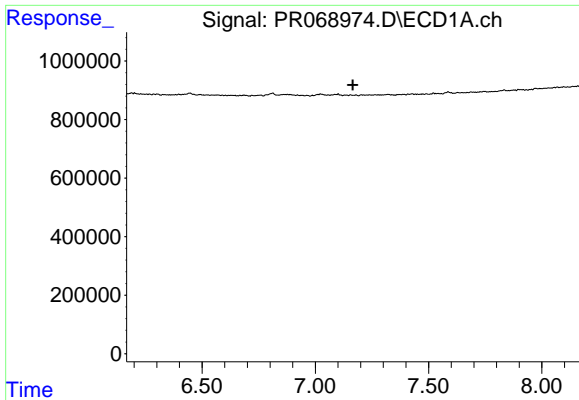
#27 AR-1254-2

R.T.: 0.000 min  
 Exp R.T.: 6.009 min  
 Response: 0  
 Conc: N.D.



#27 AR-1254-2

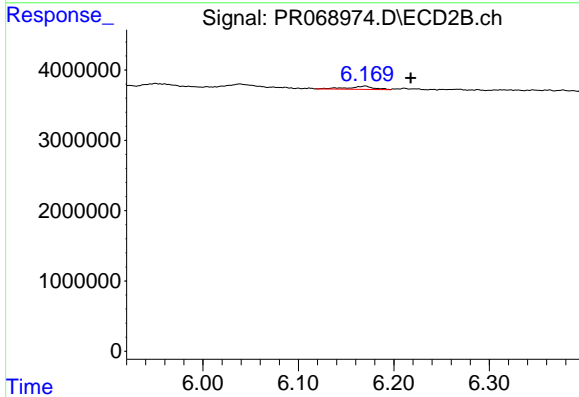
R.T.: 5.072 min  
 Delta R.T.: -0.027 min  
 Response: 411899  
 Conc: 1.33 ng/ml



#30 AR-1254-5

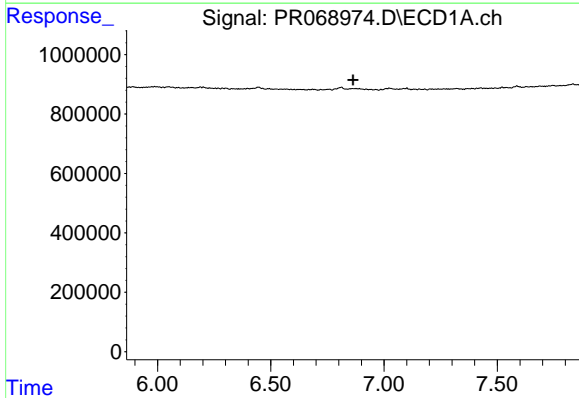
R.T.: 0.000 min  
 Exp R.T. : 7.166 min  
 Response: 0  
 Conc: N.D.

Instrument :  
 ECD\_R  
 ClientSampleId :



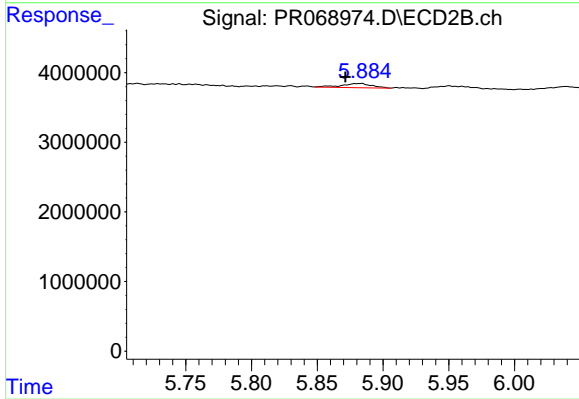
#30 AR-1254-5

R.T.: 6.170 min  
 Delta R.T.: -0.048 min  
 Response: 845207  
 Conc: 2.63 ng/ml



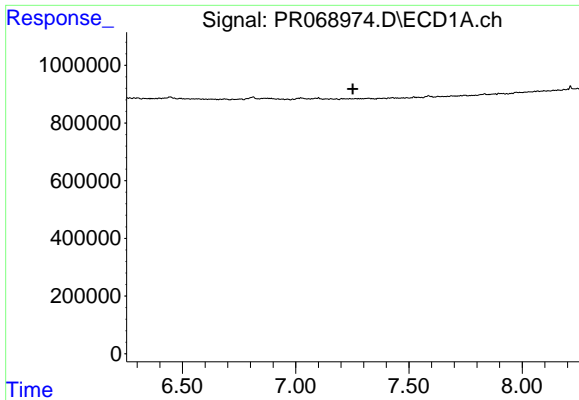
#32 AR-1260-2

R.T.: 0.000 min  
 Exp R.T. : 6.863 min  
 Response: 0  
 Conc: N.D.



#32 AR-1260-2

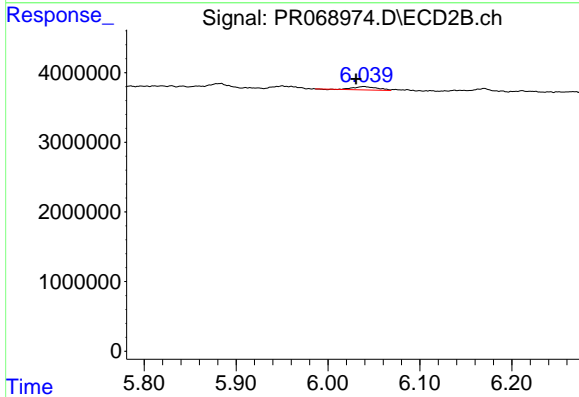
R.T.: 5.883 min  
 Delta R.T.: 0.012 min  
 Response: 975606  
 Conc: 2.92 ng/ml



#33 AR-1260-3

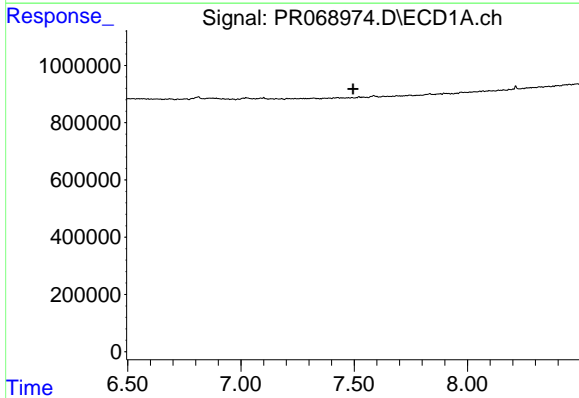
R.T.: 0.000 min  
 Exp R.T.: 7.253 min  
 Response: 0  
 Conc: N.D.

Instrument :  
 ECD\_R  
 ClientSampleId :



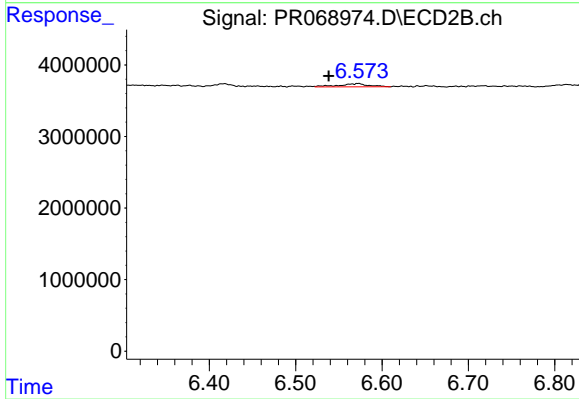
#33 AR-1260-3

R.T.: 6.039 min  
 Delta R.T.: 0.008 min  
 Response: 855724  
 Conc: 2.99 ng/ml



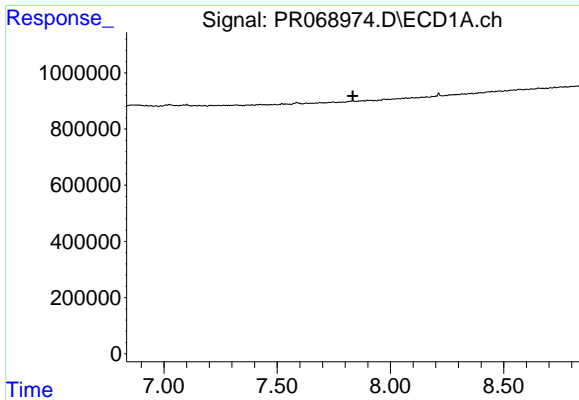
#34 AR-1260-4

R.T.: 0.000 min  
 Exp R.T.: 7.495 min  
 Response: 0  
 Conc: N.D.



#34 AR-1260-4

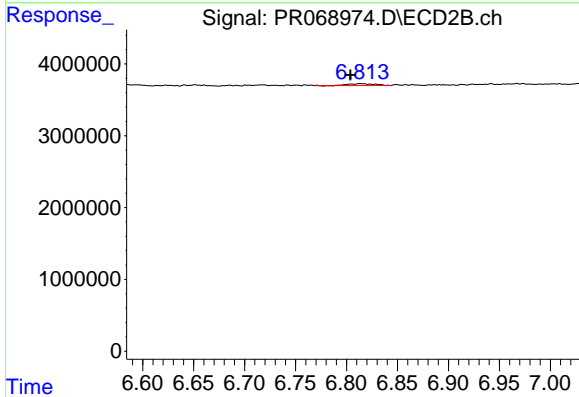
R.T.: 6.572 min  
 Delta R.T.: 0.034 min  
 Response: 1063534  
 Conc: 4.55 ng/ml



#35 AR-1260-5

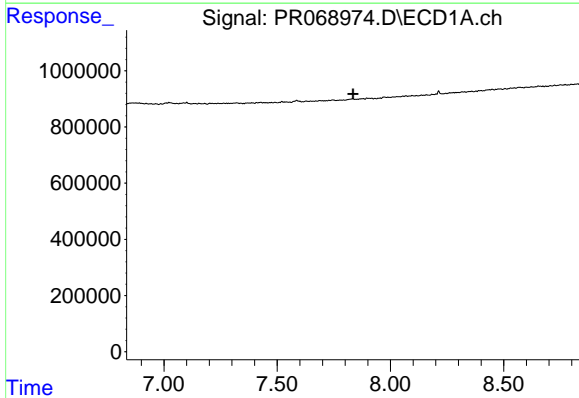
R.T.: 0.000 min  
 Exp R.T. : 7.833 min  
 Response: 0  
 Conc: N.D.

Instrument :  
 ECD\_R  
 ClientSampleId :



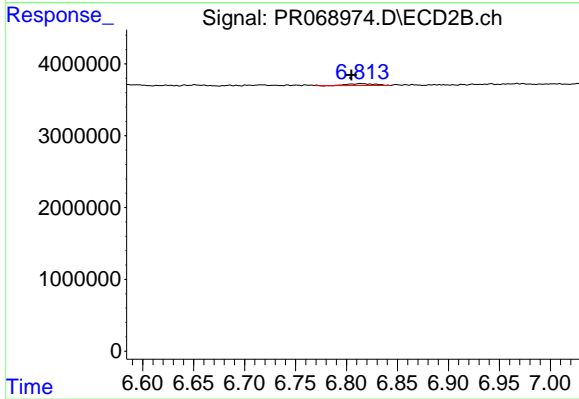
#35 AR-1260-5

R.T.: 6.814 min  
 Delta R.T.: 0.010 min  
 Response: 472057  
 Conc: 0.87 ng/ml



#37 AR-1262-2

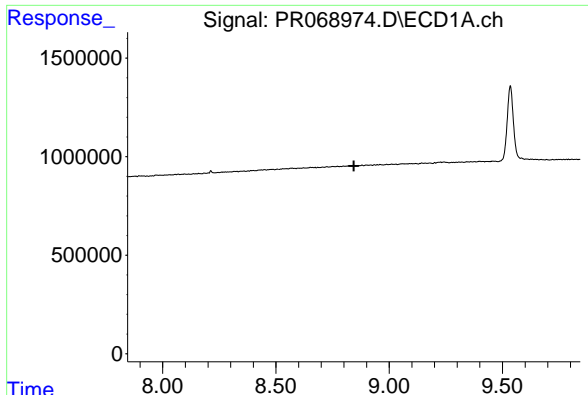
R.T.: 0.000 min  
 Exp R.T. : 7.835 min  
 Response: 0  
 Conc: N.D.



#37 AR-1262-2

R.T.: 6.814 min  
 Delta R.T.: 0.009 min  
 Response: 472057  
 Conc: 0.81 ng/ml

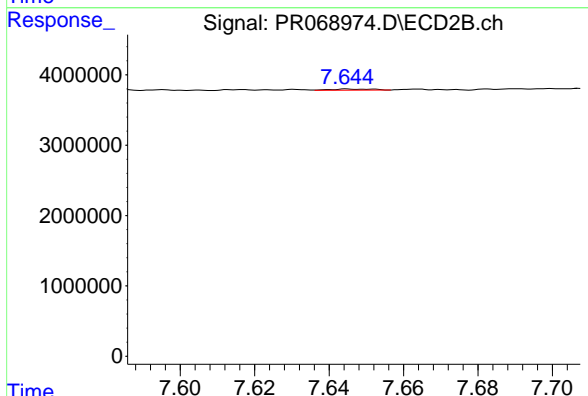




#44 AR-1268-4

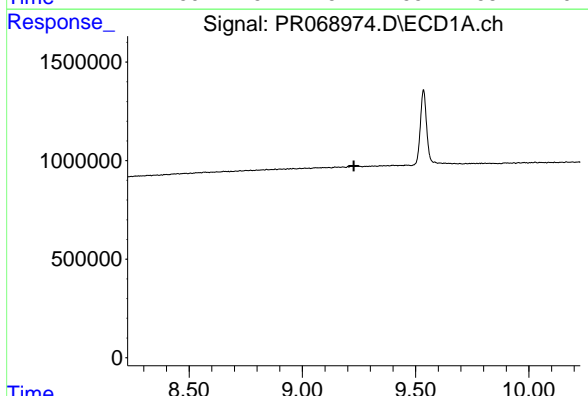
R.T.: 0.000 min  
 Exp R.T. : 8.844 min  
 Response: 0  
 Conc: N.D.

Instrument :  
 ECD\_R  
 ClientSampleId :



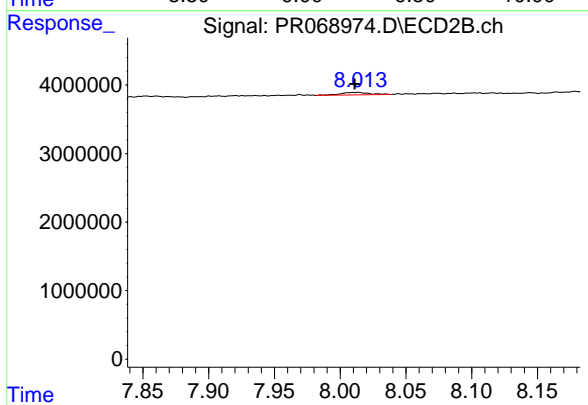
#44 AR-1268-4

R.T.: 7.645 min  
 Delta R.T.: -0.069 min  
 Response: 126345  
 Conc: 0.61 ng/ml



#45 AR-1268-5

R.T.: 0.000 min  
 Exp R.T. : 9.227 min  
 Response: 0  
 Conc: N.D.



#45 AR-1268-5

R.T.: 8.014 min  
 Delta R.T.: 0.003 min  
 Response: 561746  
 Conc: 0.35 ng/ml