

Data Path : Z:\pestpcbsrv\HPCHEM1\ECD_R\Data\PR110223\
 Data File : PR064339.D
 Signal(s) : Signal #1: ECD1A.ch Signal #2: ECD2B.ch
 Acq On : 02 Nov 2023 16:44
 Operator : AJ\MA
 Sample : PPB156869BS
 Misc :
 ALS Vial : 8 Sample Multiplier: 1

Instrument :
 ECD_R
 ClientSampleId :

Integration File signal 1: autoint1.e
 Integration File signal 2: autoint2.e
 Quant Time: Nov 02 21:37:41 2023
 Quant Method : Z:\pestpcbsrv\HPCHEM1\ECD_R\Method\PR101223CLP.M
 Quant Title : GC EXTRACTABLES
 QLast Update : Fri Oct 13 05:04:13 2023
 Response via : Initial Calibration
 Integrator: ChemStation

Volume Inj. : 1 µl
 Signal #1 Phase : ZB MR1 Signal #2 Phase: ZB MR2
 Signal #1 Info : 30Mx0.32mmx 0.5µm Signal #2 Info : 30M x 0.32mm x 0.25µm

Compound	RT#1	RT#2	Resp#1	Resp#2	ng/ml	ng/ml
System Monitoring Compounds						
1) SA Tetrachlo...	3.735	3.021	133.5E6	71377242	18.644	17.293
2) SA Decachlor...	9.753	8.409	116.0E6	72593953	24.828	23.916
Target Compounds						
3) L1 AR-1016-1	4.978	4.169	23070094	13888652	107.247	95.541
4) L1 AR-1016-2	5.001	4.187	33802056	19003960	103.161	95.065
5) L1 AR-1016-3	5.066	4.371	22103789	10586901	106.850	96.034
6) L1 AR-1016-4	5.169	4.423	17084140	9319494	104.885	107.693
7) L1 AR-1016-5	5.488	4.646	18181694	11086167	111.849	97.037
8) L2 AR-1221-1	3.961	3.251	2887805	1392461	35.350	25.721 #
9) L2 AR-1221-2	4.052	3.338	3932058	2513547	72.333	64.909
10) L2 AR-1221-3	4.132	3.419	12196755	8071492	67.959	64.362
11) L3 AR-1232-1	4.132	3.419	12196755	8071492	82.041	77.085
12) L3 AR-1232-2	4.689	4.187	19092889	19003960	234.240	203.630
13) L3 AR-1232-3	5.001	4.371	33802056	10586901	225.822	209.193
14) L3 AR-1232-4	5.169	4.466	17084140	10931991	234.191	239.401
15) L3 AR-1232-5	5.273	4.646	14839201	11086167	271.454	219.903
16) L4 AR-1242-1	4.978	4.169	23070094	13888652	127.751	112.975
17) L4 AR-1242-2	5.001	4.187	33802056	19003960	123.179	112.960
18) L4 AR-1242-3	5.066	4.371	22103789	10586901	125.700	113.811
19) L4 AR-1242-4	5.169	4.466	17084140	10931991	124.984	120.281
20) L4 AR-1242-5	5.965	5.025	2876412	9294213	19.427	83.848 #
21) L5 AR-1248-1	4.978	4.169	23070094	13888652	167.256	147.223
22) L5 AR-1248-2	5.273	4.423	14839201	9319494	75.779	71.577
23) L5 AR-1248-3	5.488	4.466	18181694	10931991	78.966	81.089
24) L5 AR-1248-4	5.925	4.646	2975095	11086167	12.017	68.924 #
25) L5 AR-1248-5	5.965	5.069	2876412	1273660	11.478	8.423 #
26) L6 AR-1254-1	5.895	5.025	14208575	9294213	56.671	40.300 #
27) L6 AR-1254-2	6.136	5.188	15062220	9057713	39.597	45.743
28) L6 AR-1254-3	6.529	5.620	7510660	4739504	19.276	15.140
29) L6 AR-1254-4	6.842	5.870	4553510	1774804	17.025	9.445 #
30) L6 AR-1254-5	7.300	6.324	43039400	30781966	146.387	112.815
31) L7 AR-1260-1	6.711	5.762	32795588	24154841	110.348	107.580
32) L7 AR-1260-2	6.996	5.971	37284389	28181469	107.813	106.866
33) L7 AR-1260-3	7.388	6.133	23767032	26147899	92.505	103.405
34) L7 AR-1260-4	7.633	6.650	28054427	17816993	99.266	90.313
35) L7 AR-1260-5	7.972	6.919	50092710	38423177	92.785	90.484
36) L8 AR-1262-1	7.388	6.369	23767032	19352023	63.127	66.483
37) L8 AR-1262-2	7.972	6.919	50092710	38423177	81.377	82.322
38) L8 AR-1262-3	8.294	7.230	33031328	7902654	78.828	43.278 #
39) L8 AR-1262-4	8.377	7.297	7402721	28331766	22.983	84.110 #
40) L8 AR-1262-5	9.024	7.844	12439950	8167951	56.598	55.894
41) L9 AR-1268-1	8.294	7.230	33031328	7902654	45.032	15.190 #

Data Path : Z:\pestpcbsrv\HPCHEM1\ECD_R\Data\PR110223\
 Data File : PR064339.D
 Signal(s) : Signal #1: ECD1A.ch Signal #2: ECD2B.ch
 Acq On : 02 Nov 2023 16:44
 Operator : AJ\MA
 Sample : PPB156869BS
 Misc :
 ALS Vial : 8 Sample Multiplier: 1

Instrument :
 ECD_R
 ClientSampleId :

Integration File signal 1: autoint1.e
 Integration File signal 2: autoint2.e
 Quant Time: Nov 02 21:37:41 2023
 Quant Method : Z:\pestpcbsrv\HPCHEM1\ECD_R\Method\PR101223CLP.M
 Quant Title : GC EXTRACTABLES
 QLast Update : Fri Oct 13 05:04:13 2023
 Response via : Initial Calibration
 Integrator: ChemStation

Volume Inj. : 1 µl
 Signal #1 Phase : ZB MR1 Signal #2 Phase: ZB MR2
 Signal #1 Info : 30Mx0.32mmx 0.5µm Signal #2 Info : 30M x 0.32mm x 0.25µm

	Compound	RT#1	RT#2	Resp#1	Resp#2	ng/ml	ng/ml
42)	L9 AR-1268-2	8.377	7.297	7402721	28331766	11.155	60.011 #
43)	L9 AR-1268-3	8.603	7.529	1287789	933346	2.236	2.336
44)	L9 AR-1268-4	9.024	7.844	12439950	8167951	53.189	50.185
45)	L9 AR-1268-5	9.425	8.147	4457725	3047204	2.505	2.605

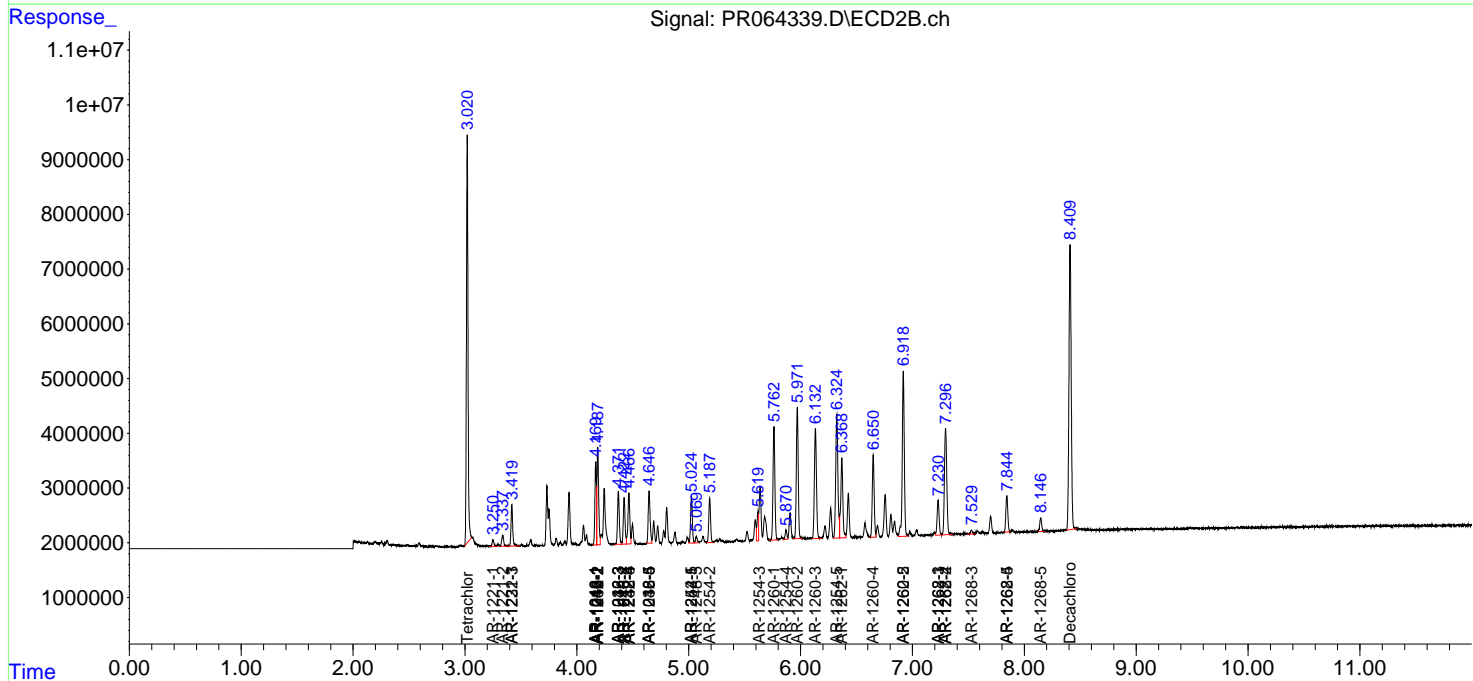
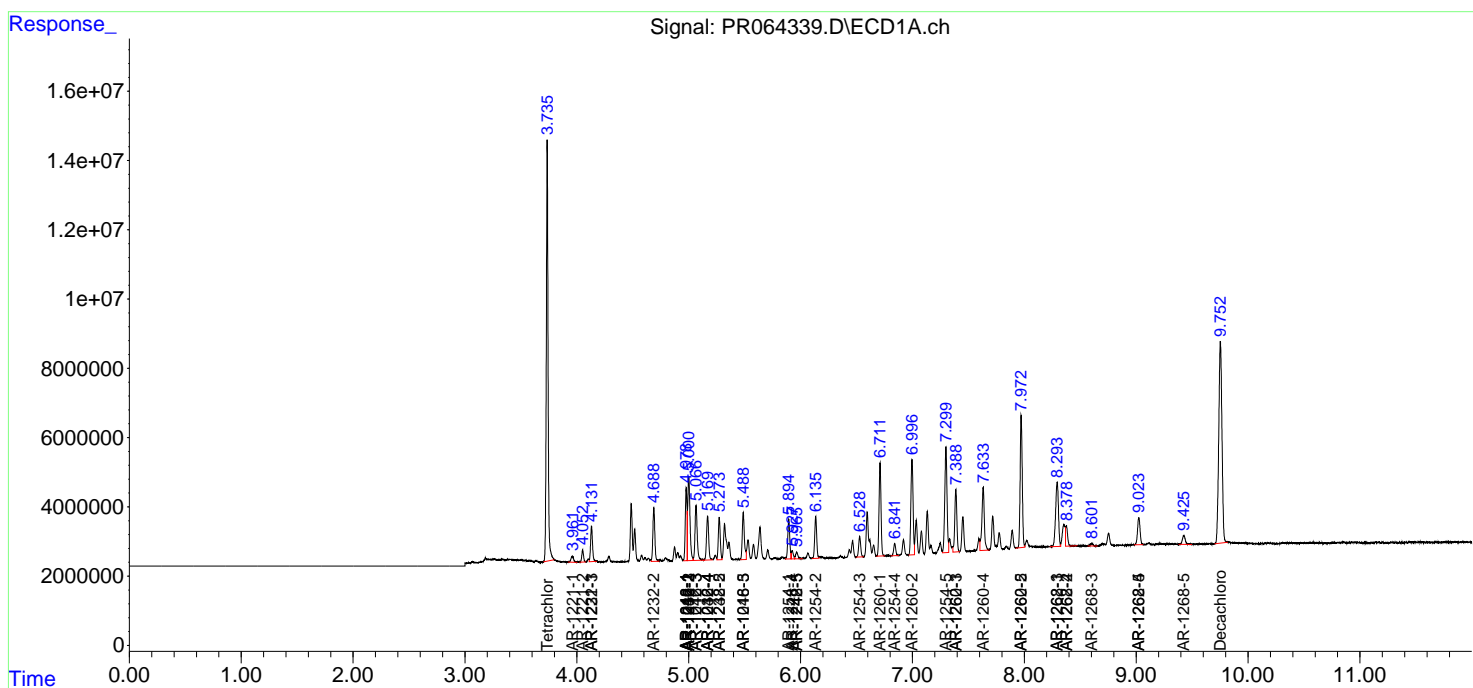
(f)=RT Delta > 1/2 Window (#)=Amounts differ by > 25% (m)=manual int.

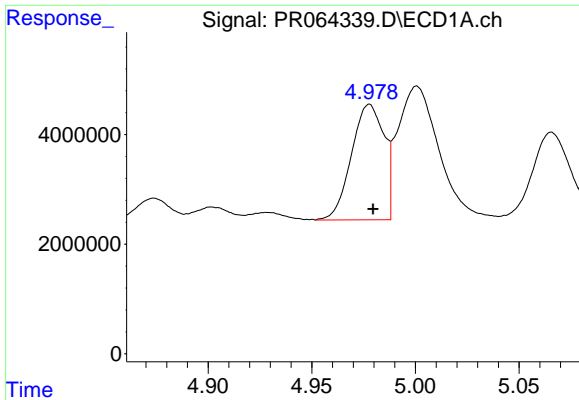
Data Path : Z:\pestpcbsrv\HPCHEM1\ECD_R\Data\PR10223\
 Data File : PR064339.D
 Signal(s) : Signal #1: ECD1A.ch Signal #2: ECD2B.ch
 Acq On : 02 Nov 2023 16:44
 Operator : AJ\MA
 Sample : PPB156869BS
 Misc :
 ALS Vial : 8 Sample Multiplier: 1

Instrument :
 ECD_R
 ClientSampleId :

Integration File signal 1: autoint1.e
 Integration File signal 2: autoint2.e
 Quant Time: Nov 02 21:37:41 2023
 Quant Method : Z:\pestpcbsrv\HPCHEM1\ECD_R\Method\PR101223CLP.M
 Quant Title : GC EXTRACTABLES
 QLast Update : Fri Oct 13 05:04:13 2023
 Response via : Initial Calibration
 Integrator: ChemStation

Volume Inj. : 1 µl
 Signal #1 Phase : ZB MR1 Signal #2 Phase: ZB MR2
 Signal #1 Info : 30Mx0.32mmx 0.5µm Signal #2 Info : 30M x 0.32mm x 0.25µm

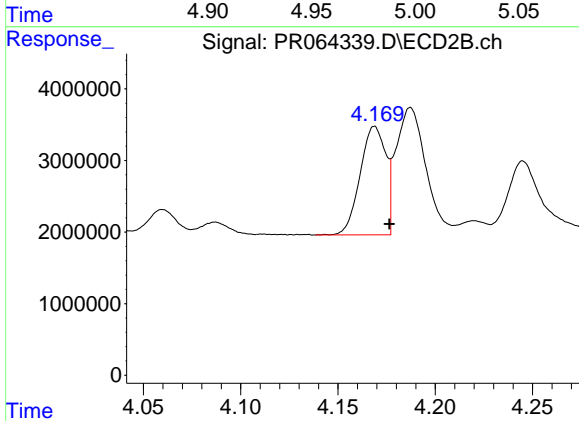




#3 AR-1016-1

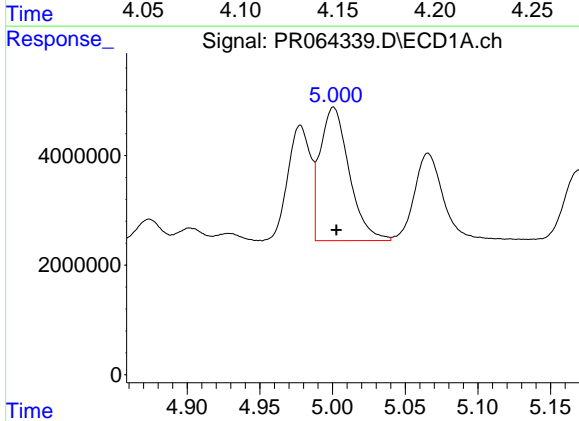
R.T.: 4.978 min
 Delta R.T.: -0.002 min
 Response: 23070094
 Conc: 107.25 ng/ml

Instrument :
 ECD_R
 ClientSampleId :



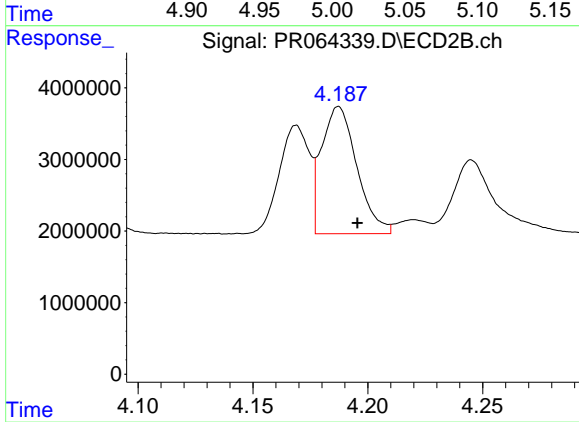
#3 AR-1016-1

R.T.: 4.169 min
 Delta R.T.: -0.008 min
 Response: 13888652
 Conc: 95.54 ng/ml



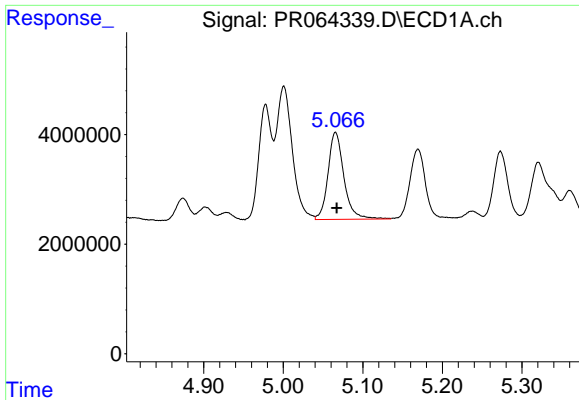
#4 AR-1016-2

R.T.: 5.001 min
 Delta R.T.: -0.002 min
 Response: 33802056
 Conc: 103.16 ng/ml



#4 AR-1016-2

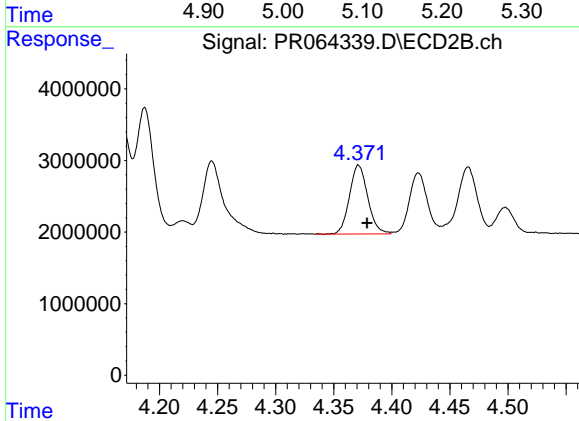
R.T.: 4.187 min
 Delta R.T.: -0.008 min
 Response: 19003960
 Conc: 95.06 ng/ml



#5 AR-1016-3

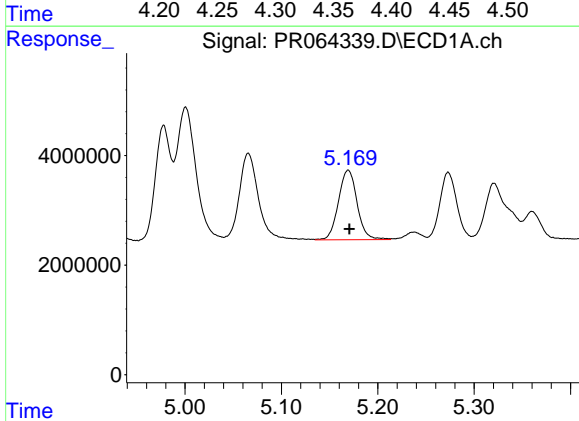
R.T.: 5.066 min
Delta R.T.: -0.002 min
Response: 22103789
Conc: 106.85 ng/ml

Instrument :
ECD_R
ClientSampleId :



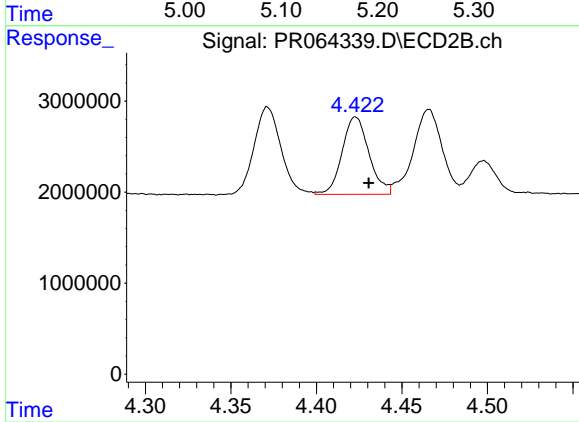
#5 AR-1016-3

R.T.: 4.371 min
Delta R.T.: -0.007 min
Response: 10586901
Conc: 96.03 ng/ml



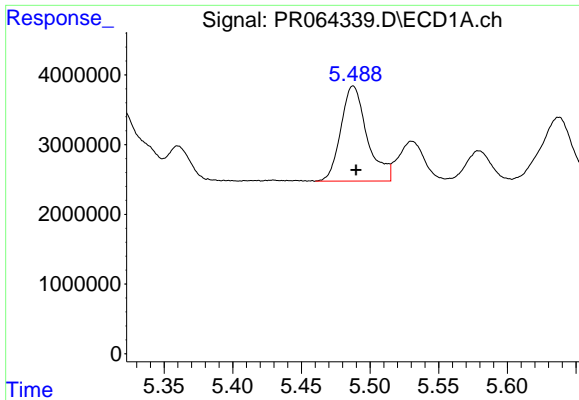
#6 AR-1016-4

R.T.: 5.169 min
Delta R.T.: -0.001 min
Response: 17084140
Conc: 104.89 ng/ml



#6 AR-1016-4

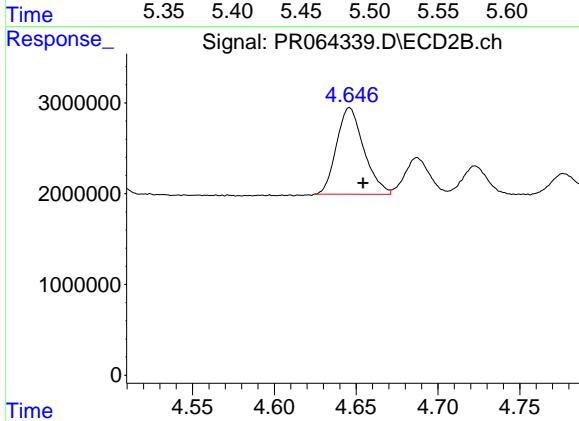
R.T.: 4.423 min
Delta R.T.: -0.008 min
Response: 9319494
Conc: 107.69 ng/ml



#7 AR-1016-5

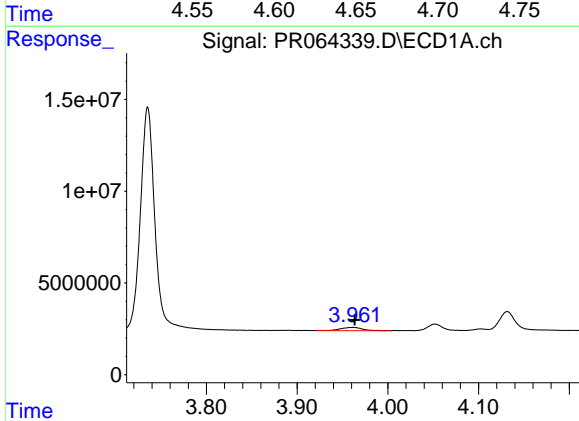
R.T.: 5.488 min
 Delta R.T.: -0.002 min
 Response: 18181694
 Conc: 111.85 ng/ml

Instrument :
 ECD_R
 ClientSampleId :



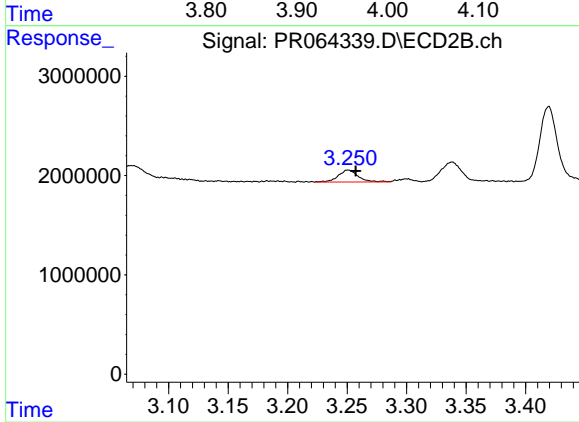
#7 AR-1016-5

R.T.: 4.646 min
 Delta R.T.: -0.008 min
 Response: 11086167
 Conc: 97.04 ng/ml



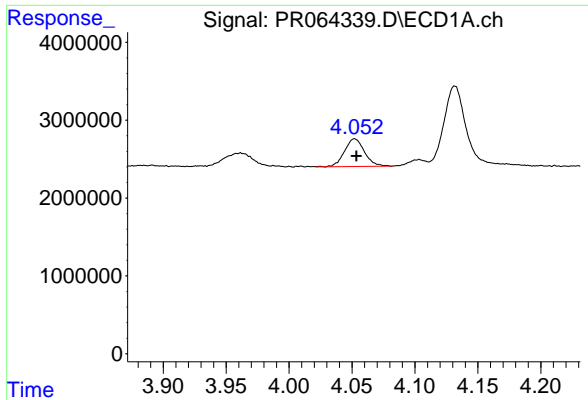
#8 AR-1221-1

R.T.: 3.961 min
 Delta R.T.: -0.002 min
 Response: 2887805
 Conc: 35.35 ng/ml



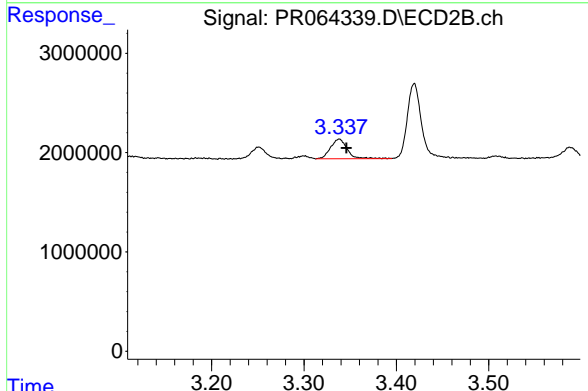
#8 AR-1221-1

R.T.: 3.251 min
 Delta R.T.: -0.006 min
 Response: 1392461
 Conc: 25.72 ng/ml

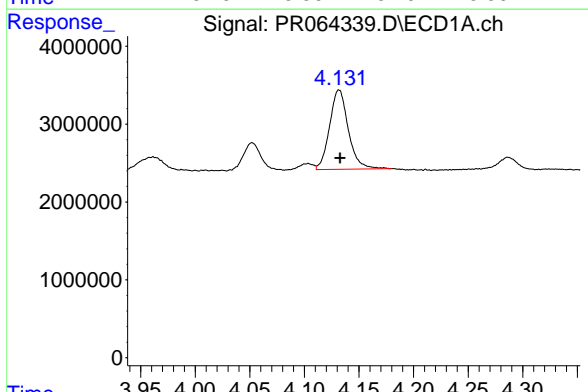


#9 AR-1221-2
 R.T.: 4.052 min
 Delta R.T.: -0.001 min
 Response: 3932058
 Conc: 72.33 ng/ml

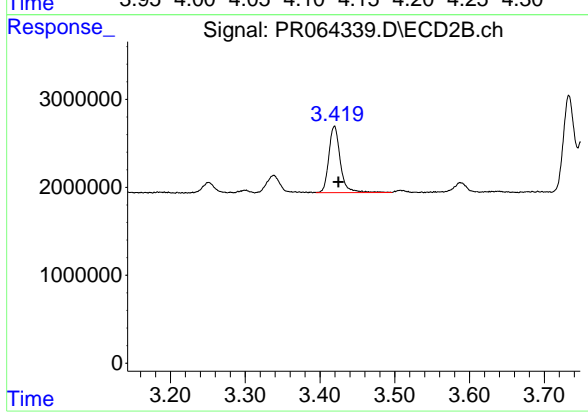
Instrument :
 ECD_R
 ClientSampleId :



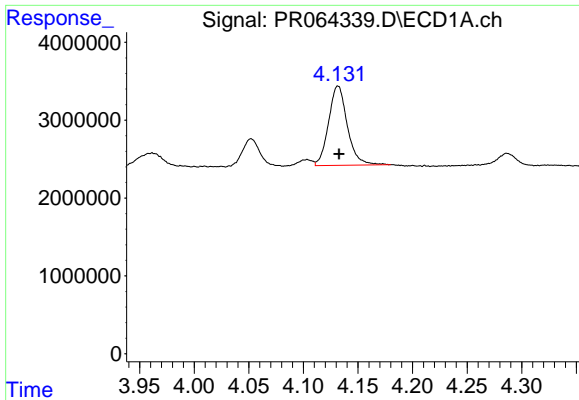
#9 AR-1221-2
 R.T.: 3.338 min
 Delta R.T.: -0.008 min
 Response: 2513547
 Conc: 64.91 ng/ml



#10 AR-1221-3
 R.T.: 4.132 min
 Delta R.T.: 0.000 min
 Response: 12196755
 Conc: 67.96 ng/ml



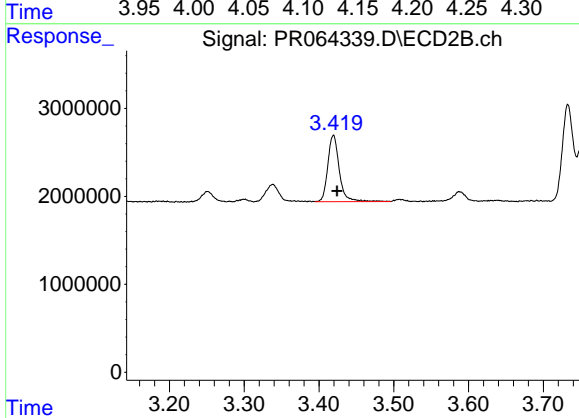
#10 AR-1221-3
 R.T.: 3.419 min
 Delta R.T.: -0.005 min
 Response: 8071492
 Conc: 64.36 ng/ml



#11 AR-1232-1

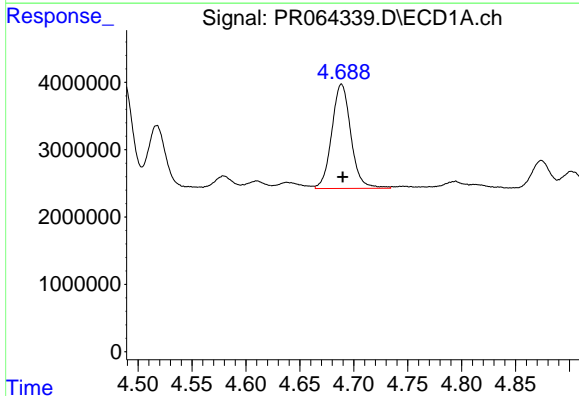
R.T.: 4.132 min
 Delta R.T.: 0.000 min
 Response: 12196755
 Conc: 82.04 ng/ml

Instrument :
 ECD_R
 ClientSampleId :



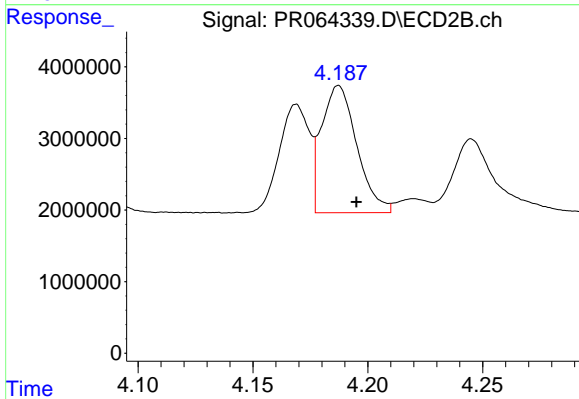
#11 AR-1232-1

R.T.: 3.419 min
 Delta R.T.: -0.005 min
 Response: 8071492
 Conc: 77.08 ng/ml



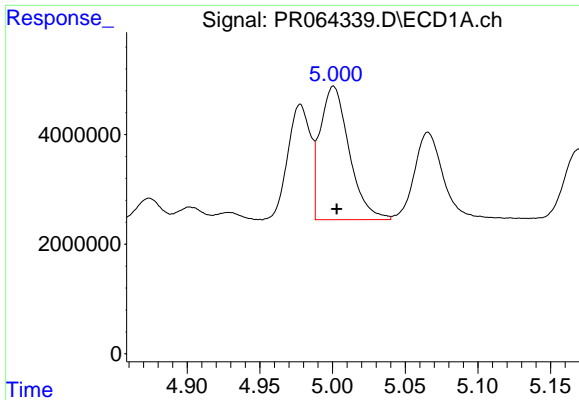
#12 AR-1232-2

R.T.: 4.689 min
 Delta R.T.: -0.001 min
 Response: 19092889
 Conc: 234.24 ng/ml



#12 AR-1232-2

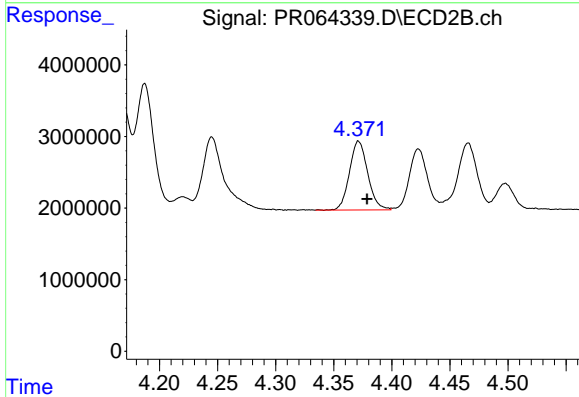
R.T.: 4.187 min
 Delta R.T.: -0.008 min
 Response: 19003960
 Conc: 203.63 ng/ml



#13 AR-1232-3

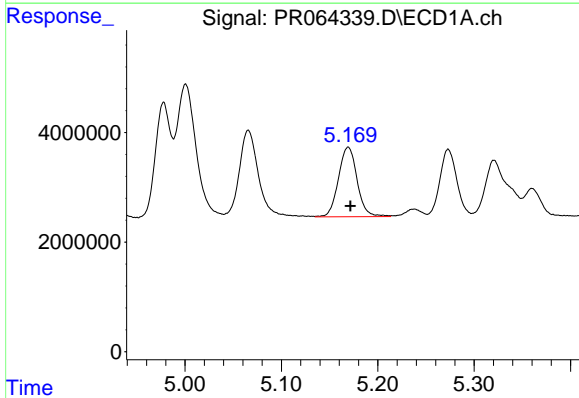
R.T.: 5.001 min
 Delta R.T.: -0.002 min
 Response: 33802056
 Conc: 225.82 ng/ml

Instrument :
 ECD_R
 ClientSampleId :



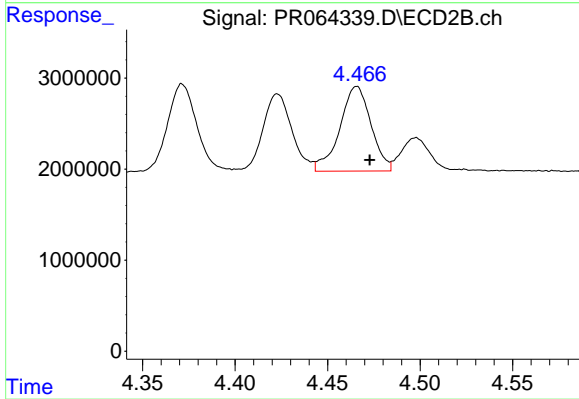
#13 AR-1232-3

R.T.: 4.371 min
 Delta R.T.: -0.007 min
 Response: 10586901
 Conc: 209.19 ng/ml



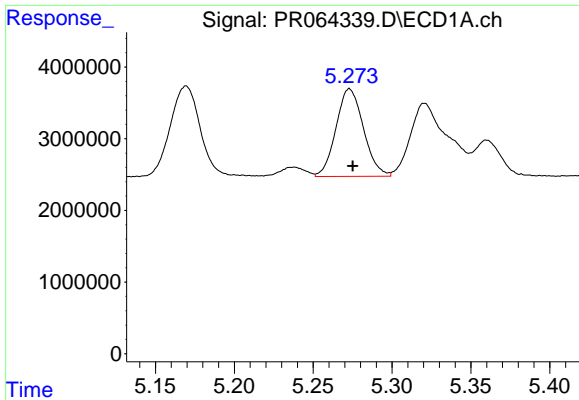
#14 AR-1232-4

R.T.: 5.169 min
 Delta R.T.: -0.002 min
 Response: 17084140
 Conc: 234.19 ng/ml



#14 AR-1232-4

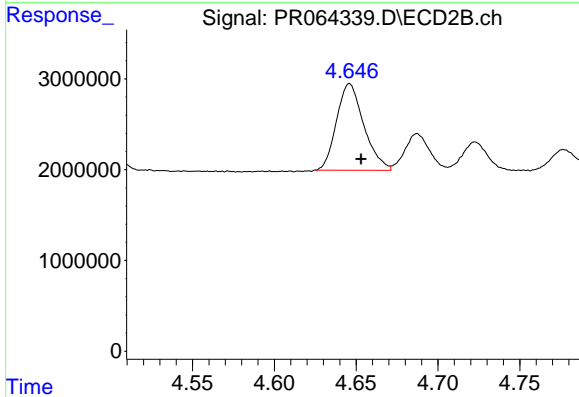
R.T.: 4.466 min
 Delta R.T.: -0.007 min
 Response: 10931991
 Conc: 239.40 ng/ml



#15 AR-1232-5

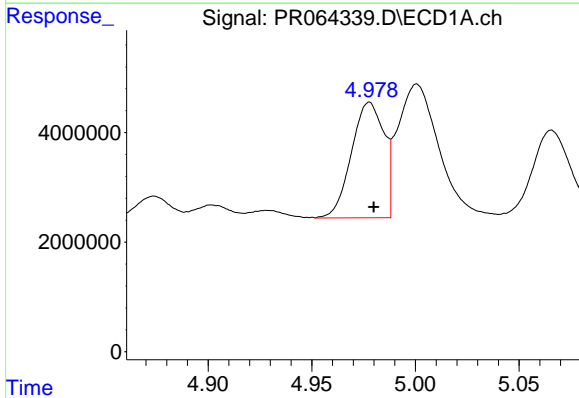
R.T.: 5.273 min
 Delta R.T.: -0.002 min
 Response: 14839201
 Conc: 271.45 ng/ml

Instrument :
 ECD_R
 ClientSampleId :



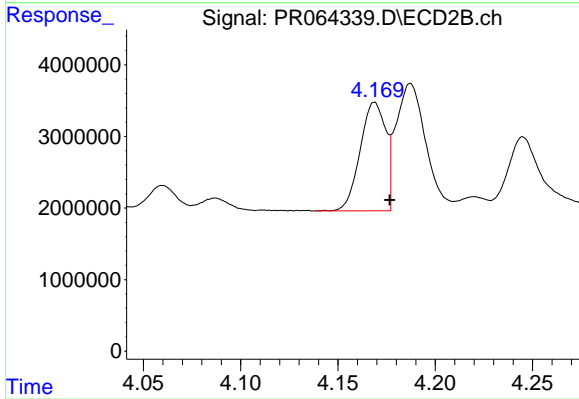
#15 AR-1232-5

R.T.: 4.646 min
 Delta R.T.: -0.007 min
 Response: 11086167
 Conc: 219.90 ng/ml



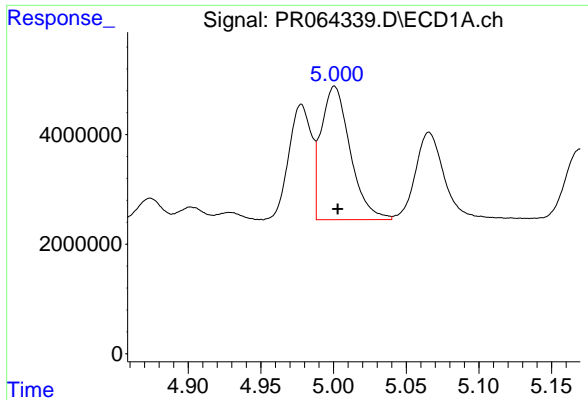
#16 AR-1242-1

R.T.: 4.978 min
 Delta R.T.: -0.002 min
 Response: 23070094
 Conc: 127.75 ng/ml



#16 AR-1242-1

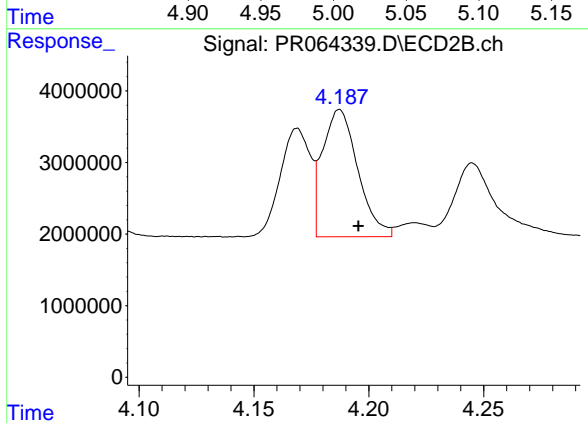
R.T.: 4.169 min
 Delta R.T.: -0.008 min
 Response: 13888652
 Conc: 112.98 ng/ml



#17 AR-1242-2

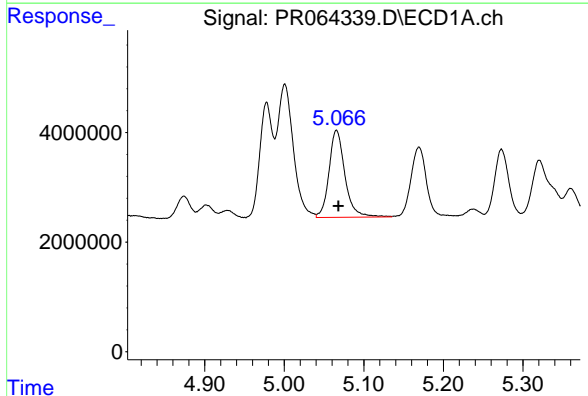
R.T.: 5.001 min
 Delta R.T.: -0.002 min
 Response: 33802056
 Conc: 123.18 ng/ml

Instrument :
 ECD_R
 ClientSampleId :



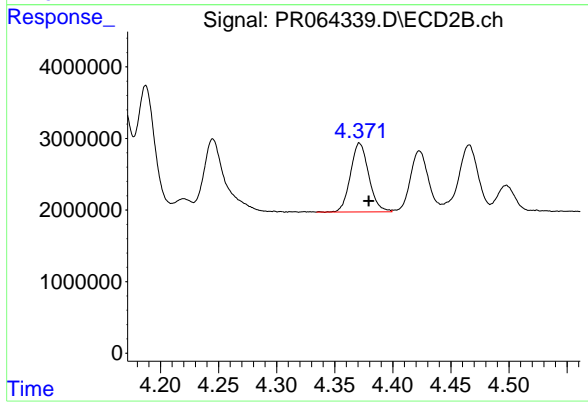
#17 AR-1242-2

R.T.: 4.187 min
 Delta R.T.: -0.008 min
 Response: 19003960
 Conc: 112.96 ng/ml



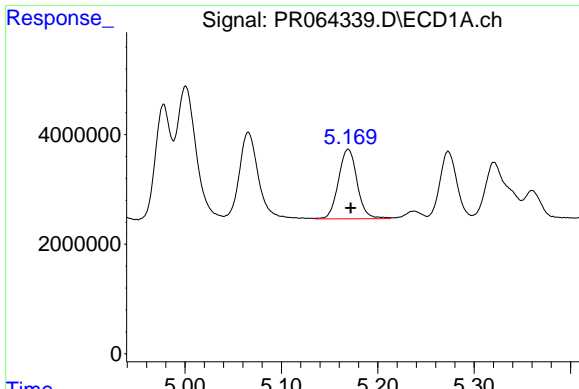
#18 AR-1242-3

R.T.: 5.066 min
 Delta R.T.: -0.003 min
 Response: 22103789
 Conc: 125.70 ng/ml



#18 AR-1242-3

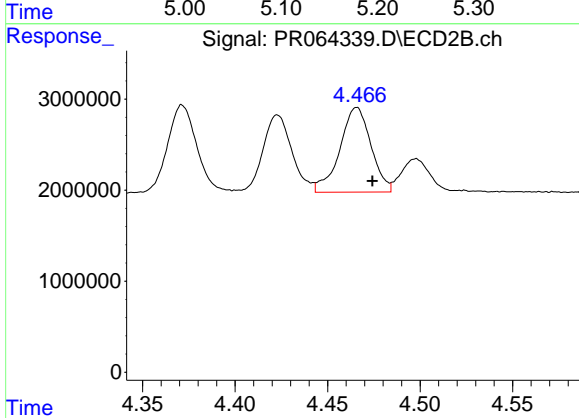
R.T.: 4.371 min
 Delta R.T.: -0.008 min
 Response: 10586901
 Conc: 113.81 ng/ml



#19 AR-1242-4

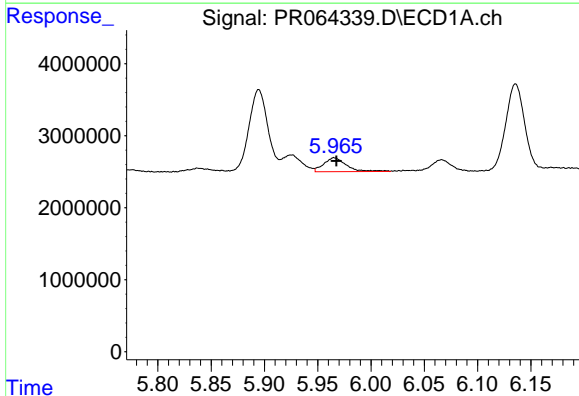
R.T.: 5.169 min
 Delta R.T.: -0.002 min
 Response: 17084140
 Conc: 124.98 ng/ml

Instrument :
 ECD_R
 ClientSampleId :



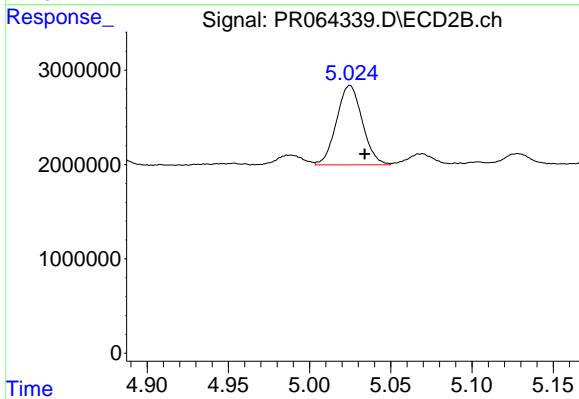
#19 AR-1242-4

R.T.: 4.466 min
 Delta R.T.: -0.008 min
 Response: 10931991
 Conc: 120.28 ng/ml



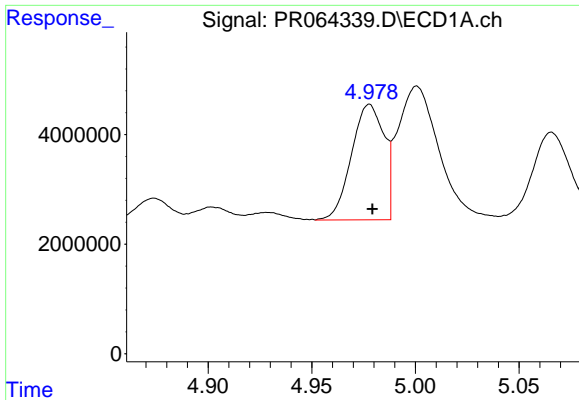
#20 AR-1242-5

R.T.: 5.965 min
 Delta R.T.: -0.002 min
 Response: 2876412
 Conc: 19.43 ng/ml



#20 AR-1242-5

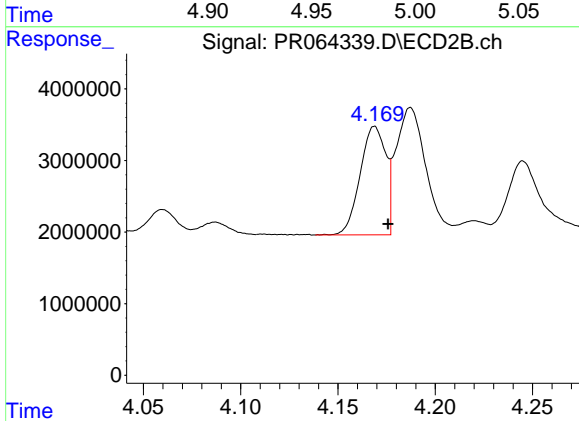
R.T.: 5.025 min
 Delta R.T.: -0.009 min
 Response: 9294213
 Conc: 83.85 ng/ml



#21 AR-1248-1

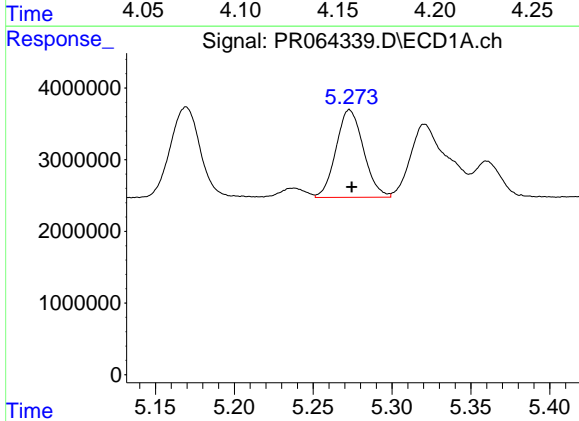
R.T.: 4.978 min
 Delta R.T.: -0.001 min
 Response: 23070094
 Conc: 167.26 ng/ml

Instrument :
 ECD_R
 ClientSampleId :



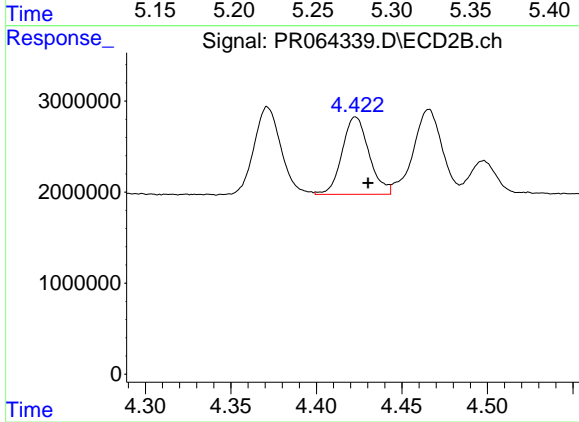
#21 AR-1248-1

R.T.: 4.169 min
 Delta R.T.: -0.007 min
 Response: 13888652
 Conc: 147.22 ng/ml



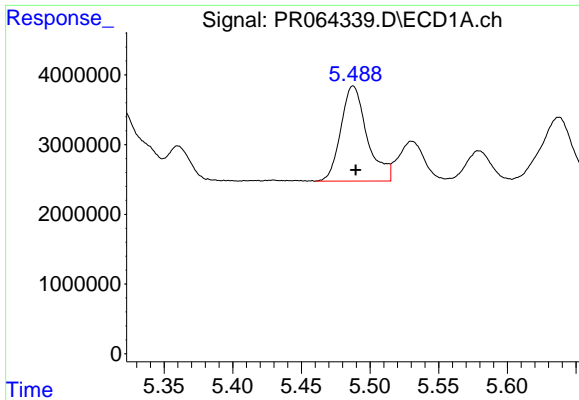
#22 AR-1248-2

R.T.: 5.273 min
 Delta R.T.: -0.001 min
 Response: 14839201
 Conc: 75.78 ng/ml



#22 AR-1248-2

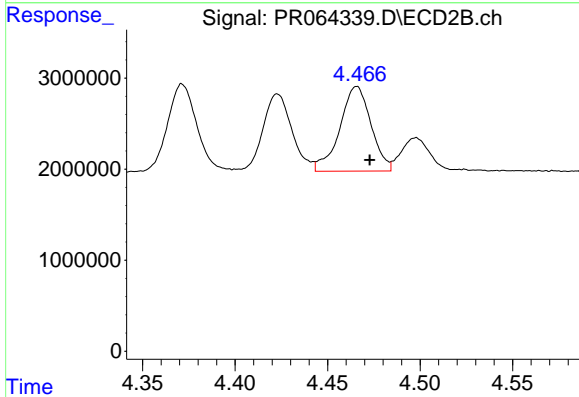
R.T.: 4.423 min
 Delta R.T.: -0.007 min
 Response: 9319494
 Conc: 71.58 ng/ml



#23 AR-1248-3

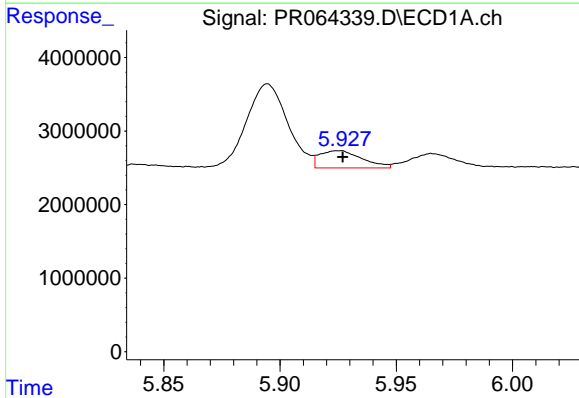
R.T.: 5.488 min
 Delta R.T.: -0.002 min
 Response: 18181694
 Conc: 78.97 ng/ml

Instrument :
 ECD_R
 ClientSampleId :



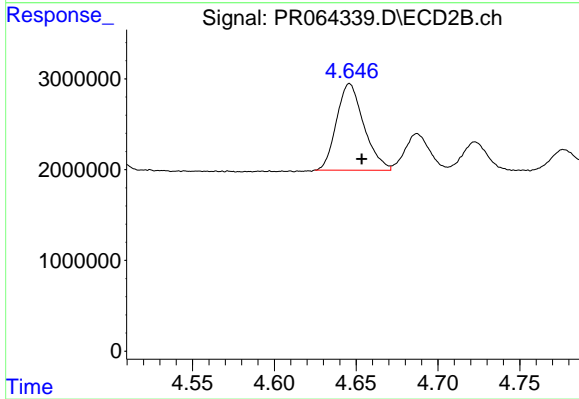
#23 AR-1248-3

R.T.: 4.466 min
 Delta R.T.: -0.007 min
 Response: 10931991
 Conc: 81.09 ng/ml



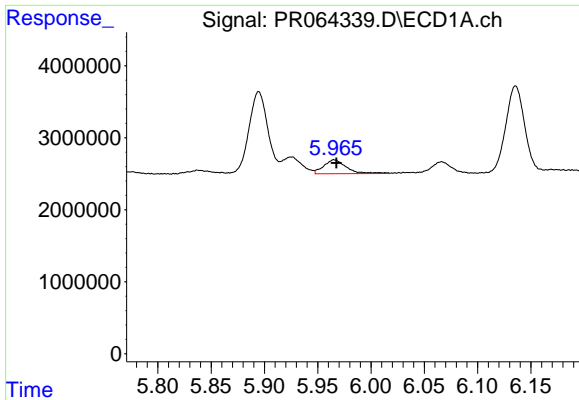
#24 AR-1248-4

R.T.: 5.925 min
 Delta R.T.: -0.002 min
 Response: 2975095
 Conc: 12.02 ng/ml



#24 AR-1248-4

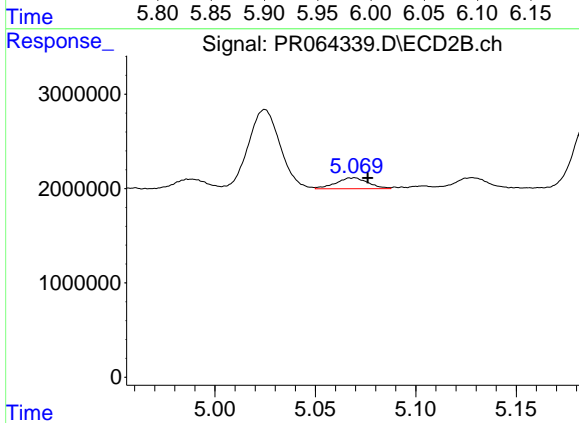
R.T.: 4.646 min
 Delta R.T.: -0.007 min
 Response: 11086167
 Conc: 68.92 ng/ml



#25 AR-1248-5

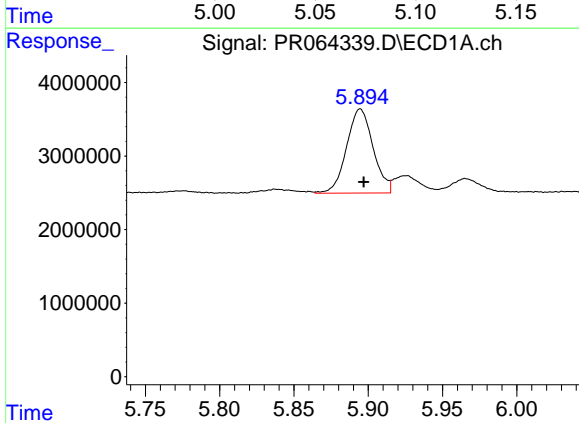
R.T.: 5.965 min
 Delta R.T.: -0.002 min
 Response: 2876412
 Conc: 11.48 ng/ml

Instrument :
 ECD_R
 ClientSampleId :



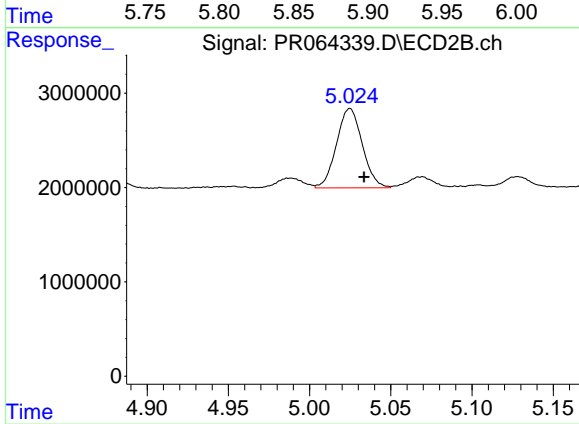
#25 AR-1248-5

R.T.: 5.069 min
 Delta R.T.: -0.007 min
 Response: 1273660
 Conc: 8.42 ng/ml



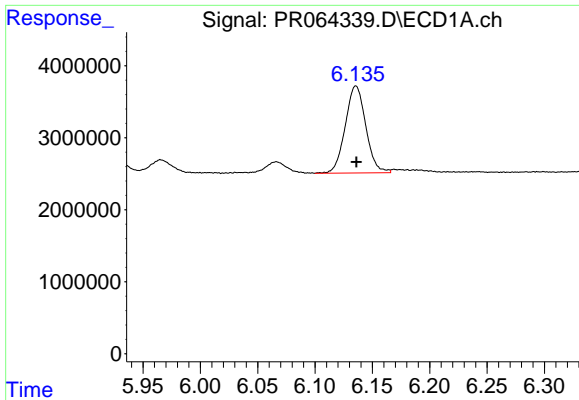
#26 AR-1254-1

R.T.: 5.895 min
 Delta R.T.: -0.002 min
 Response: 14208575
 Conc: 56.67 ng/ml



#26 AR-1254-1

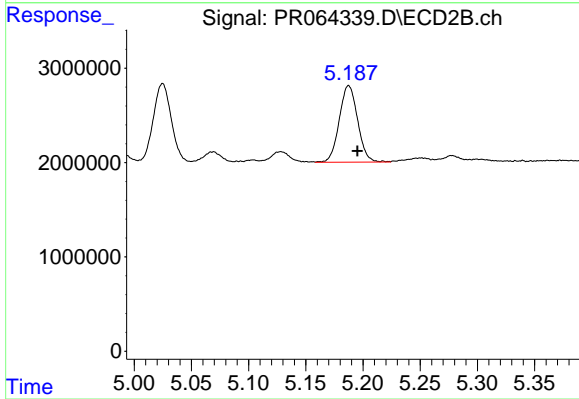
R.T.: 5.025 min
 Delta R.T.: -0.009 min
 Response: 9294213
 Conc: 40.30 ng/ml



#27 AR-1254-2

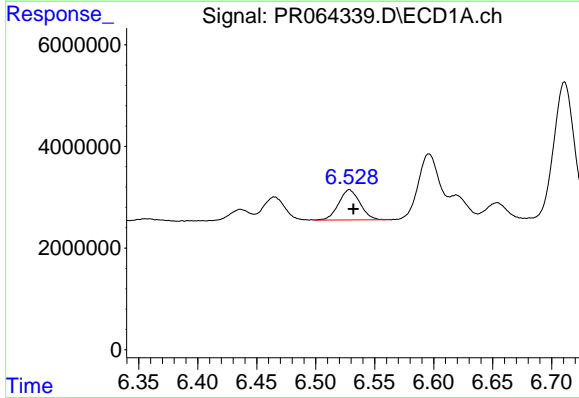
R.T.: 6.136 min
 Delta R.T.: 0.000 min
 Response: 15062220
 Conc: 39.60 ng/ml

Instrument :
 ECD_R
 ClientSampleId :



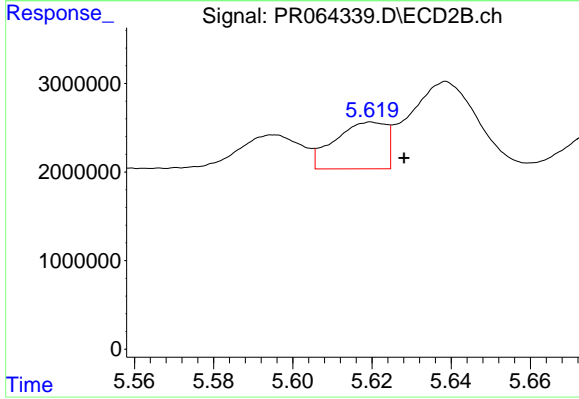
#27 AR-1254-2

R.T.: 5.188 min
 Delta R.T.: -0.008 min
 Response: 9057713
 Conc: 45.74 ng/ml



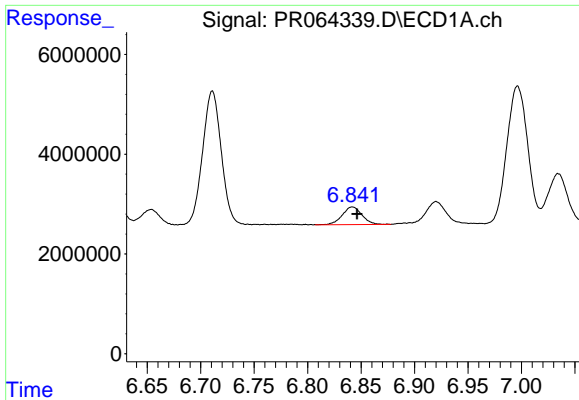
#28 AR-1254-3

R.T.: 6.529 min
 Delta R.T.: -0.003 min
 Response: 7510660
 Conc: 19.28 ng/ml



#28 AR-1254-3

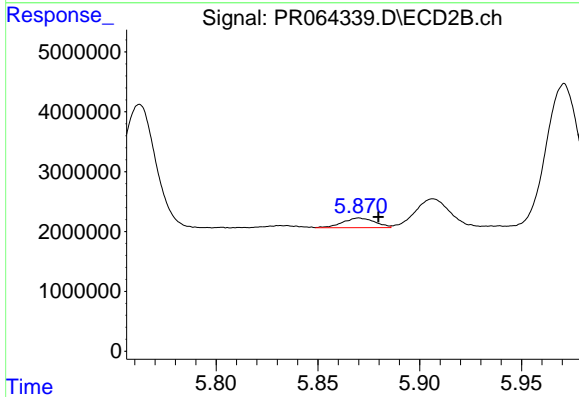
R.T.: 5.620 min
 Delta R.T.: -0.008 min
 Response: 4739504
 Conc: 15.14 ng/ml



#29 AR-1254-4

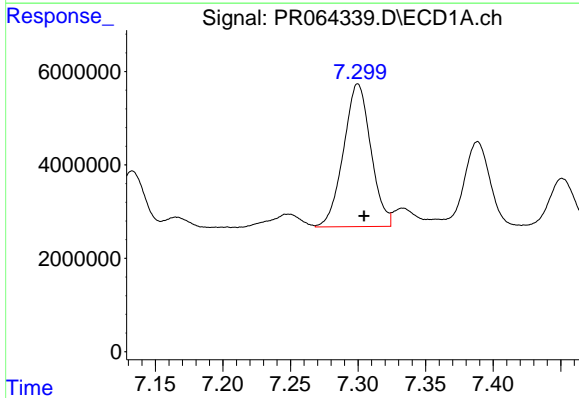
R.T.: 6.842 min
 Delta R.T.: -0.004 min
 Response: 4553510
 Conc: 17.02 ng/ml

Instrument :
 ECD_R
 ClientSampleId :



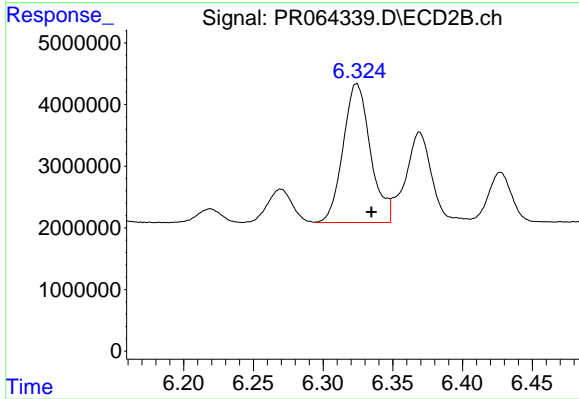
#29 AR-1254-4

R.T.: 5.870 min
 Delta R.T.: -0.010 min
 Response: 1774804
 Conc: 9.45 ng/ml



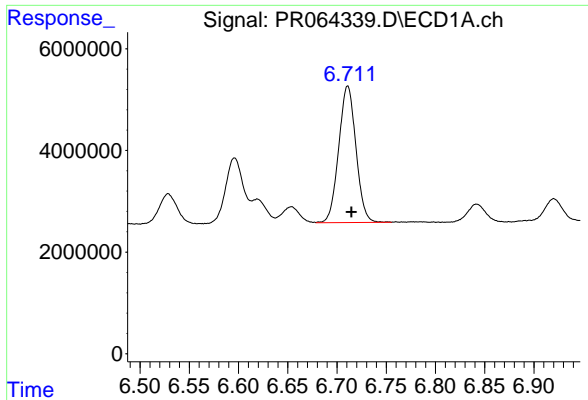
#30 AR-1254-5

R.T.: 7.300 min
 Delta R.T.: -0.005 min
 Response: 43039400
 Conc: 146.39 ng/ml



#30 AR-1254-5

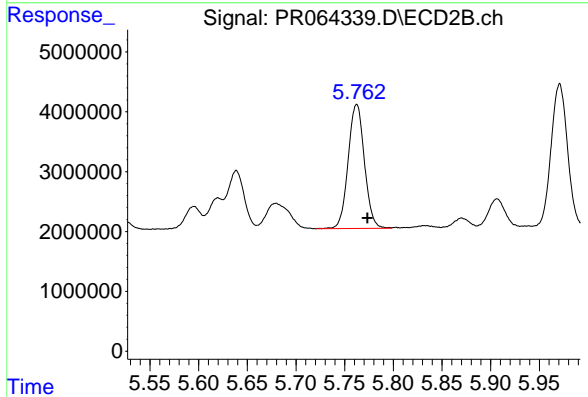
R.T.: 6.324 min
 Delta R.T.: -0.011 min
 Response: 30781966
 Conc: 112.81 ng/ml



#31 AR-1260-1

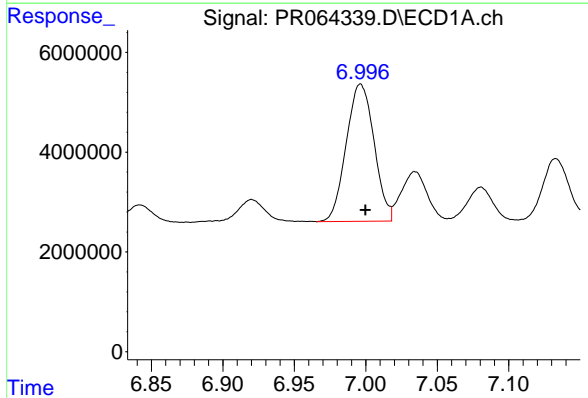
R.T.: 6.711 min
 Delta R.T.: -0.004 min
 Response: 32795588
 Conc: 110.35 ng/ml

Instrument :
 ECD_R
 ClientSampleId :



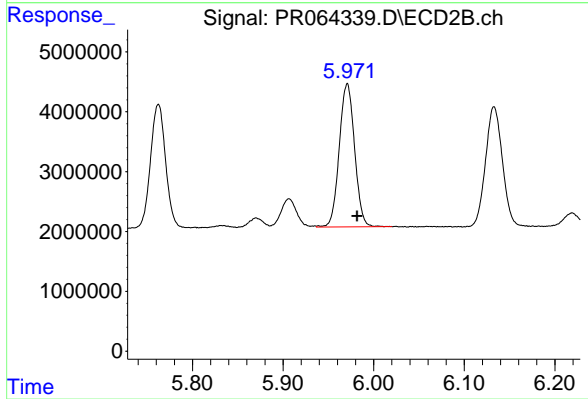
#31 AR-1260-1

R.T.: 5.762 min
 Delta R.T.: -0.011 min
 Response: 24154841
 Conc: 107.58 ng/ml



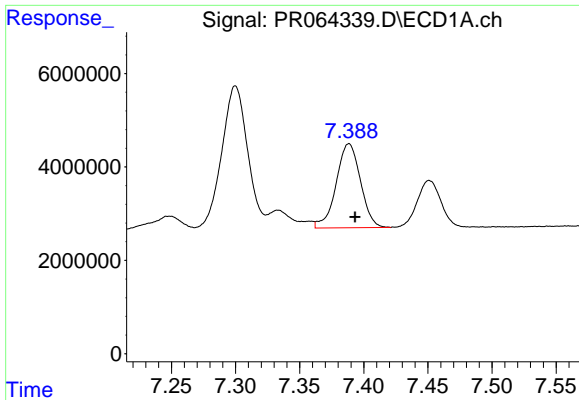
#32 AR-1260-2

R.T.: 6.996 min
 Delta R.T.: -0.003 min
 Response: 37284389
 Conc: 107.81 ng/ml



#32 AR-1260-2

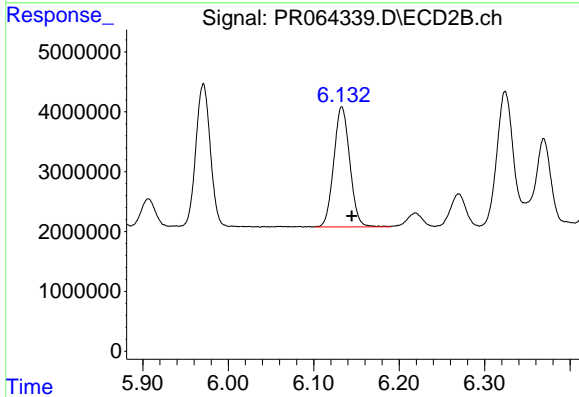
R.T.: 5.971 min
 Delta R.T.: -0.011 min
 Response: 28181469
 Conc: 106.87 ng/ml



#33 AR-1260-3

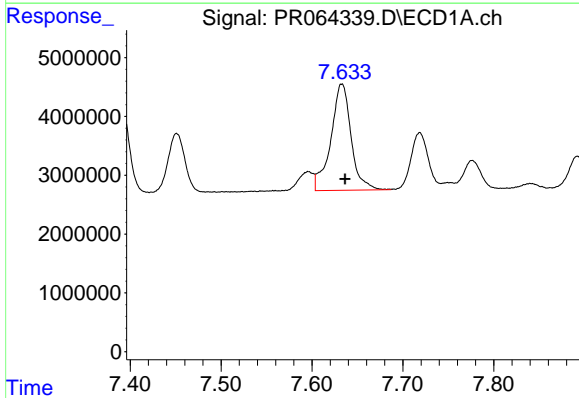
R.T.: 7.388 min
 Delta R.T.: -0.005 min
 Response: 23767032
 Conc: 92.50 ng/ml

Instrument :
 ECD_R
 ClientSampleId :



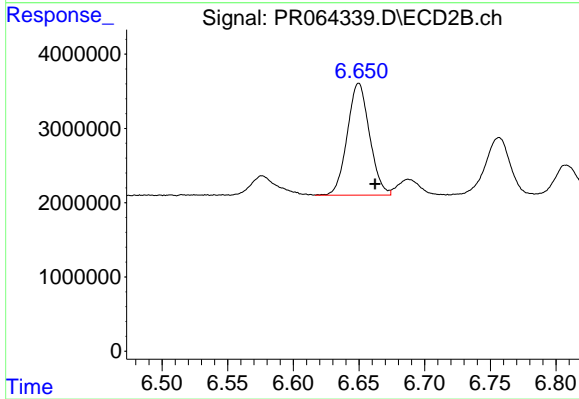
#33 AR-1260-3

R.T.: 6.133 min
 Delta R.T.: -0.012 min
 Response: 26147899
 Conc: 103.41 ng/ml



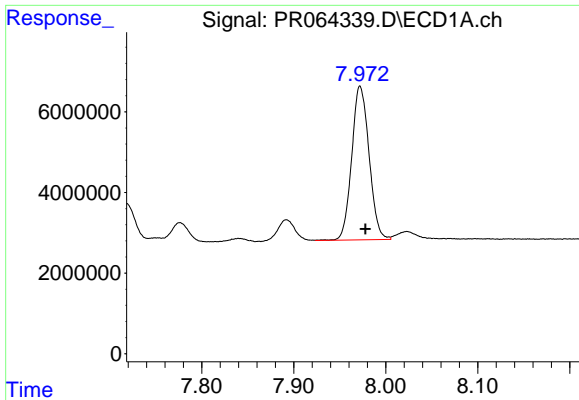
#34 AR-1260-4

R.T.: 7.633 min
 Delta R.T.: -0.004 min
 Response: 28054427
 Conc: 99.27 ng/ml



#34 AR-1260-4

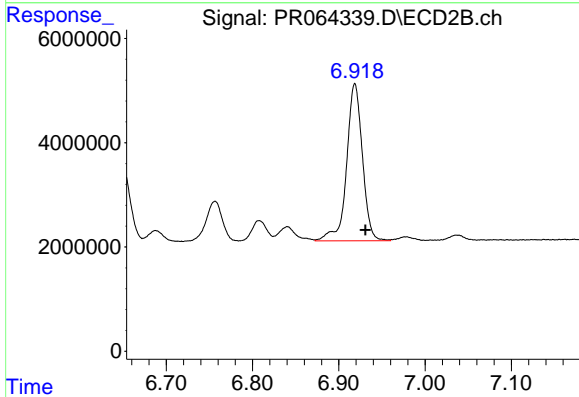
R.T.: 6.650 min
 Delta R.T.: -0.012 min
 Response: 17816993
 Conc: 90.31 ng/ml



#35 AR-1260-5

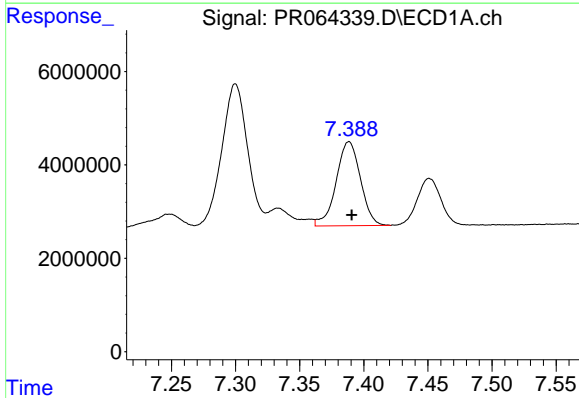
R.T.: 7.972 min
Delta R.T.: -0.006 min
Response: 50092710
Conc: 92.79 ng/ml

Instrument :
ECD_R
ClientSampleId :



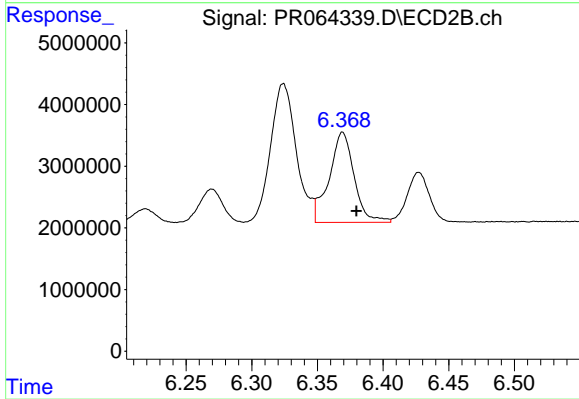
#35 AR-1260-5

R.T.: 6.919 min
Delta R.T.: -0.012 min
Response: 38423177
Conc: 90.48 ng/ml



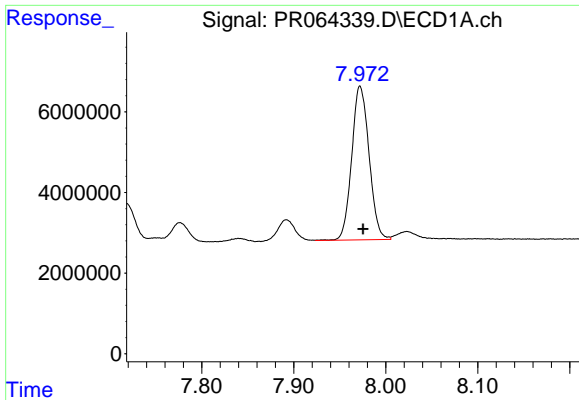
#36 AR-1262-1

R.T.: 7.388 min
Delta R.T.: -0.002 min
Response: 23767032
Conc: 63.13 ng/ml



#36 AR-1262-1

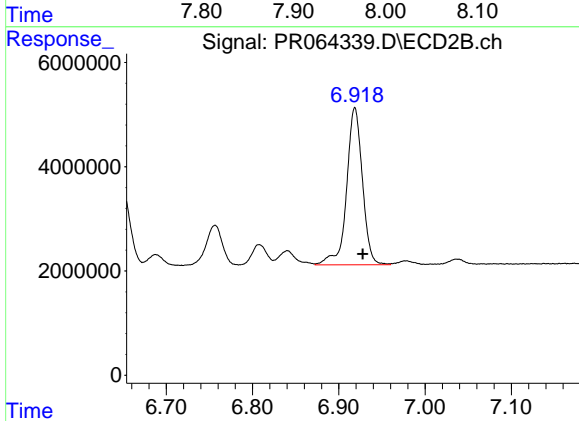
R.T.: 6.369 min
Delta R.T.: -0.010 min
Response: 19352023
Conc: 66.48 ng/ml



#37 AR-1262-2

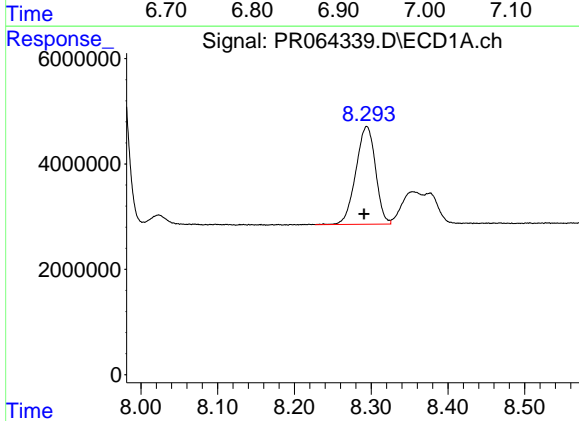
R.T.: 7.972 min
Delta R.T.: -0.003 min
Response: 50092710
Conc: 81.38 ng/ml

Instrument :
ECD_R
ClientSampleId :



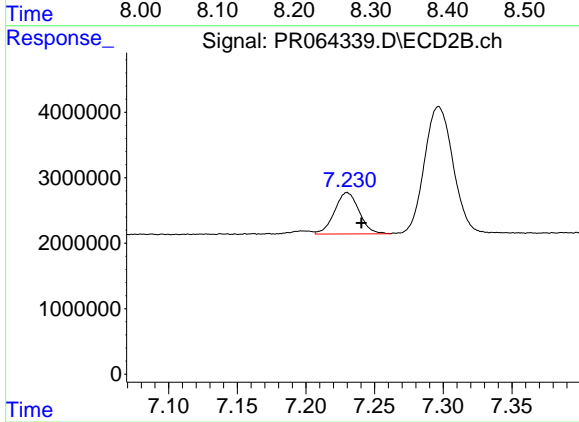
#37 AR-1262-2

R.T.: 6.919 min
Delta R.T.: -0.009 min
Response: 38423177
Conc: 82.32 ng/ml



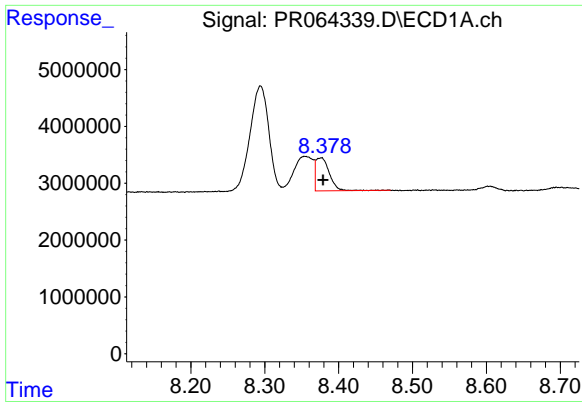
#38 AR-1262-3

R.T.: 8.294 min
Delta R.T.: 0.004 min
Response: 33031328
Conc: 78.83 ng/ml



#38 AR-1262-3

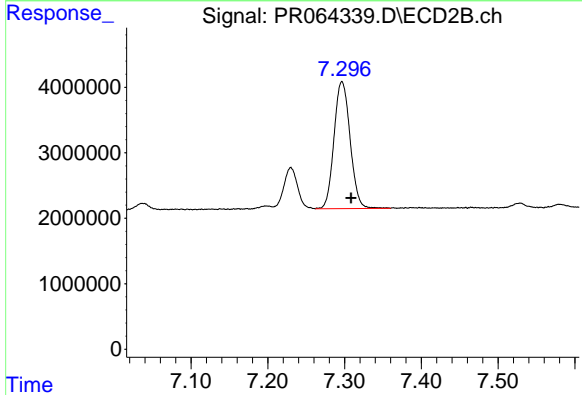
R.T.: 7.230 min
Delta R.T.: -0.010 min
Response: 7902654
Conc: 43.28 ng/ml



#39 AR-1262-4

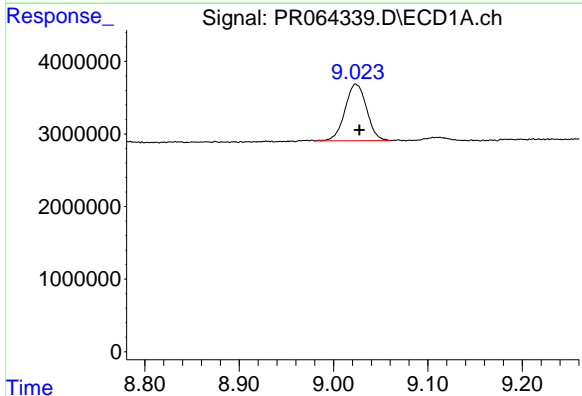
R.T.: 8.377 min
 Delta R.T.: -0.002 min
 Response: 7402721
 Conc: 22.98 ng/ml

Instrument :
 ECD_R
 ClientSampleId :



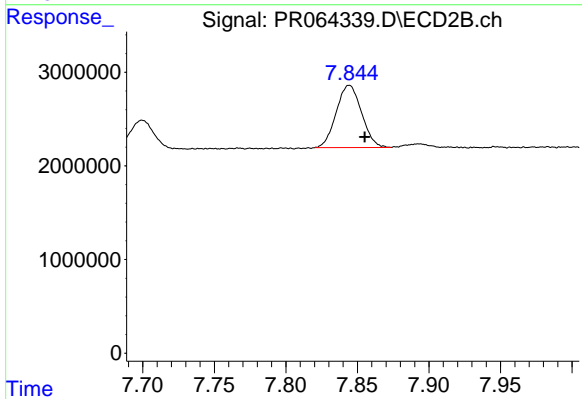
#39 AR-1262-4

R.T.: 7.297 min
 Delta R.T.: -0.012 min
 Response: 28331766
 Conc: 84.11 ng/ml



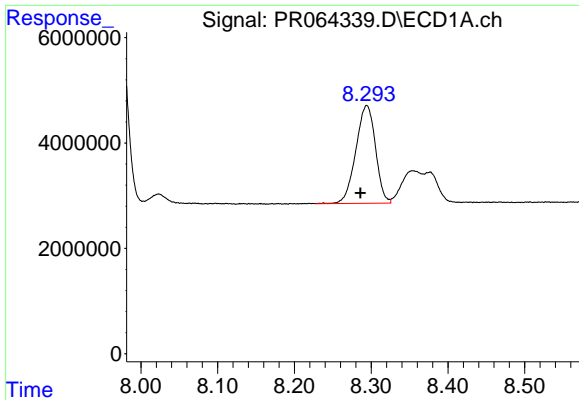
#40 AR-1262-5

R.T.: 9.024 min
 Delta R.T.: -0.004 min
 Response: 12439950
 Conc: 56.60 ng/ml



#40 AR-1262-5

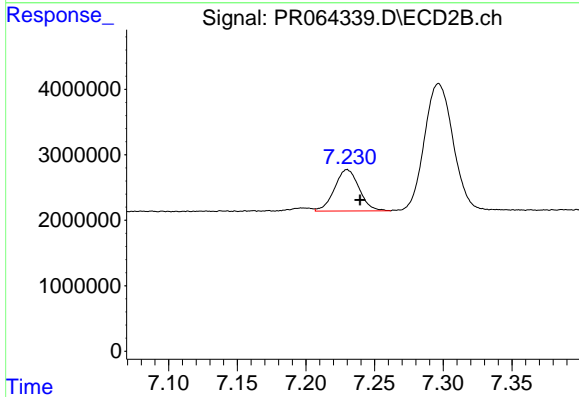
R.T.: 7.844 min
 Delta R.T.: -0.011 min
 Response: 8167951
 Conc: 55.89 ng/ml



#41 AR-1268-1

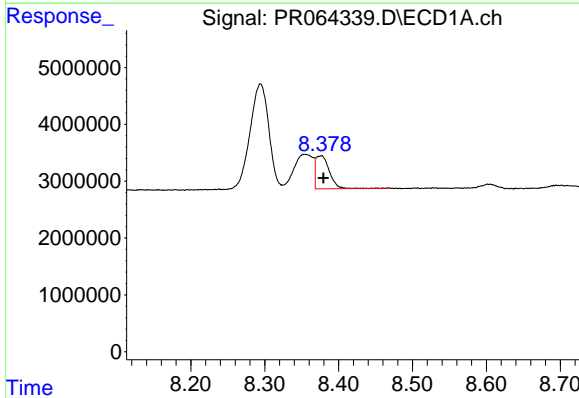
R.T.: 8.294 min
 Delta R.T.: 0.008 min
 Response: 33031328
 Conc: 45.03 ng/ml

Instrument :
 ECD_R
 ClientSampleId :



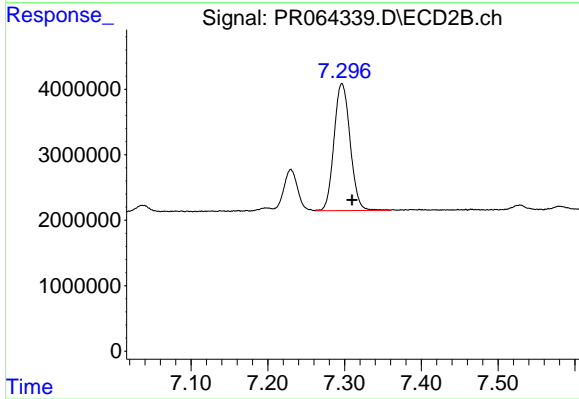
#41 AR-1268-1

R.T.: 7.230 min
 Delta R.T.: -0.009 min
 Response: 7902654
 Conc: 15.19 ng/ml



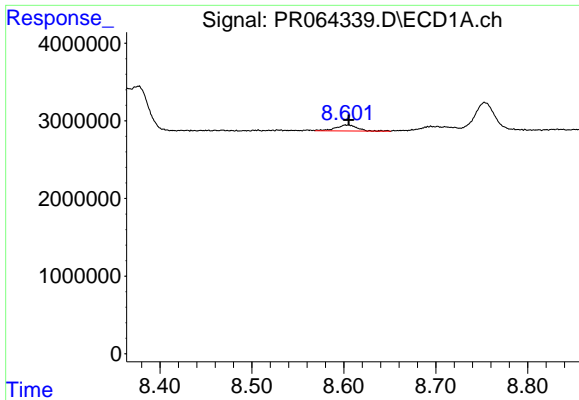
#42 AR-1268-2

R.T.: 8.377 min
 Delta R.T.: -0.003 min
 Response: 7402721
 Conc: 11.16 ng/ml



#42 AR-1268-2

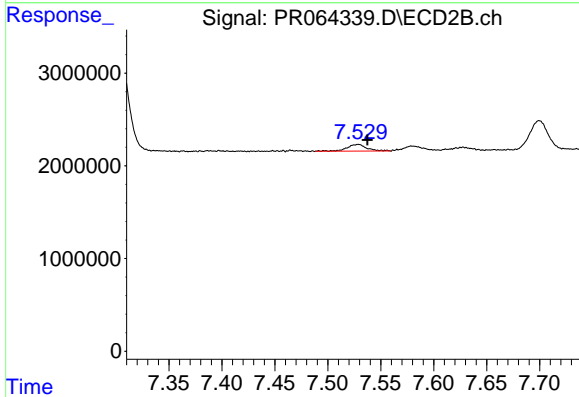
R.T.: 7.297 min
 Delta R.T.: -0.013 min
 Response: 28331766
 Conc: 60.01 ng/ml



#43 AR-1268-3

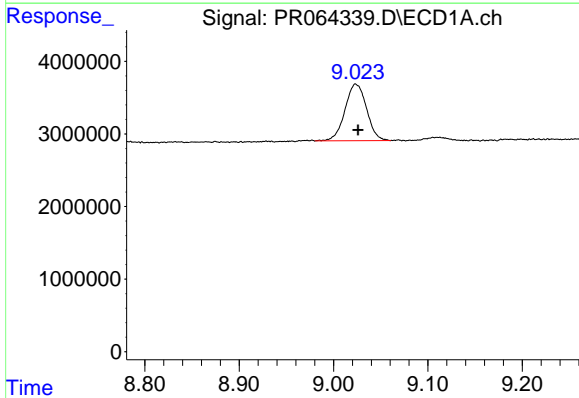
R.T.: 8.603 min
 Delta R.T.: -0.003 min
 Response: 1287789
 Conc: 2.24 ng/ml

Instrument :
 ECD_R
 ClientSampleId :



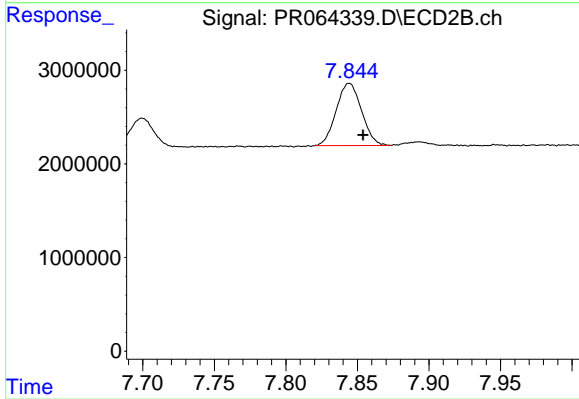
#43 AR-1268-3

R.T.: 7.529 min
 Delta R.T.: -0.009 min
 Response: 933346
 Conc: 2.34 ng/ml



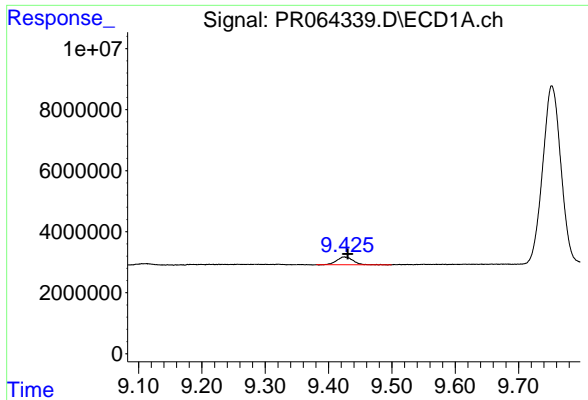
#44 AR-1268-4

R.T.: 9.024 min
 Delta R.T.: -0.002 min
 Response: 12439950
 Conc: 53.19 ng/ml



#44 AR-1268-4

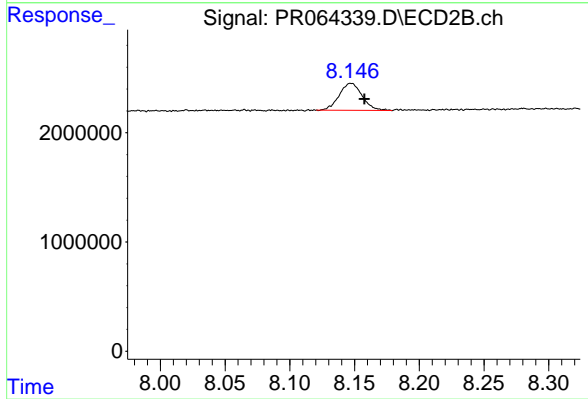
R.T.: 7.844 min
 Delta R.T.: -0.010 min
 Response: 8167951
 Conc: 50.19 ng/ml



#45 AR-1268-5

R.T.: 9.425 min
 Delta R.T.: -0.006 min
 Response: 4457725
 Conc: 2.51 ng/ml

Instrument :
 ECD_R
 ClientSampleId :



#45 AR-1268-5

R.T.: 8.147 min
 Delta R.T.: -0.010 min
 Response: 3047204
 Conc: 2.60 ng/ml