

Data Path : Z:\pestpcbsrv\HPCHEM1\ECD_R\Data\PR111021\
 Data File : PR052574.D
 Signal(s) : Signal #1: ECD1A.ch Signal #2: ECD2B.ch
 Acq On : 10 Nov 2021 21:31
 Operator : AJ\MA
 Sample : M4522-02MS
 Misc :
 ALS Vial : 32 Sample Multiplier: 1

Integration File signal 1: autoint1.e
 Integration File signal 2: autoint2.e
 Quant Time: Nov 11 03:18:24 2021
 Quant Method : Z:\pestpcbsrv\HPCHEM1\ECD_R\Method\PR110921CLP.M
 Quant Title : GC EXTRACTABLES
 QLast Update : Wed Nov 10 04:57:17 2021
 Response via : Initial Calibration
 Integrator: ChemStation

Volume Inj. : 1 µl
 Signal #1 Phase : ZB MR1 Signal #2 Phase: ZB MR2
 Signal #1 Info : 30Mx0.32mmx 0.5µm Signal #2 Info : 30M x 0.32mm x 0.25µm

Compound	RT#1	RT#2	Resp#1	Resp#2	ng/ml	ng/ml

System Monitoring Compounds						
1) SA Tetrachlo...	4.692	3.861	72181312	56227492	20.058	19.064
2) SA Decachlor...	10.625	8.864	123.2E6	116.1E6	36.862	35.716
Target Compounds						
3) L1 AR-1016-1	5.876	4.938	58652198	44316093	493.580	466.988
4) L1 AR-1016-2	5.900	4.957	83065992	67734346	498.740	476.691
5) L1 AR-1016-3	5.964	5.132	49923316	35307232	482.770	463.226
6) L1 AR-1016-4	6.066	5.172	41047681	26894126	487.754	439.219
7) L1 AR-1016-5	6.359	5.385	41209918	35938153	473.124	448.636
8) L2 AR-1221-1	4.902	4.069	6895048	3725023	160.103	103.421 #
9) L2 AR-1221-2	4.994	4.157	6337343	5006370	204.440	190.177
10) L2 AR-1221-3	5.073	4.232	28165724	22925849	284.420	269.360
11) L3 AR-1232-1	5.073	4.232	28165724	22925849	366.834	346.569
12) L3 AR-1232-2	5.610	4.957	40950244	67734346	1047.543	1085.021
13) L3 AR-1232-3	5.900	5.132	83065992	35307232	1146.676	1071.282
14) L3 AR-1232-4	6.066	5.214	41047681	33729415	1138.220	1139.002
15) L3 AR-1232-5	6.149	5.385	36083102	35938153	1216.320	1091.223
16) L4 AR-1242-1	5.876	4.938	58652198	44316093	599.814	574.004
17) L4 AR-1242-2	5.900	4.957	83065992	67734346	608.479	590.565
18) L4 AR-1242-3	5.964	5.132	49923316	35307232	582.249	571.788
19) L4 AR-1242-4	6.066	5.214	41047681	33729415	590.273	553.139
20) L4 AR-1242-5	6.803	5.734	5900432	28330829	77.401	377.269 #
21) L5 AR-1248-1	5.876	4.938	58652198	44316093	808.425	754.831
22) L5 AR-1248-2	6.149	5.172	36083102	26894126	340.315	321.480
23) L5 AR-1248-3	6.359	5.214	41209918	33729415	353.488	381.120
24) L5 AR-1248-4	6.762	5.385	5805645	35938153	44.522	340.752 #
25) L5 AR-1248-5	6.803	5.773	5900432	4285406	47.142	41.617
26) L6 AR-1254-1	6.736	5.734	32536328	28330829	245.646	183.130 #
27) L6 AR-1254-2	6.950	5.879	35011892	27261900	171.047	202.923
28) L6 AR-1254-3	7.326	6.295	18817060	60225831	88.591	266.380 #
29) L6 AR-1254-4	7.611	6.505	12835976	5478219	79.519	39.507 #
30) L6 AR-1254-5	8.031	6.920	120.4E6	112.2E6	686.799	536.138
31) L7 AR-1260-1	7.486	6.409	80391267	70943412	545.965	509.800
32) L7 AR-1260-2	7.739	6.594	96329440	87764239	541.922	524.520
33) L7 AR-1260-3	8.101	6.748	62089034	86308279	446.474	519.853
34) L7 AR-1260-4	8.343	7.217	77823241	65917972	477.566	439.767
35) L7 AR-1260-5	8.681	7.455	149.0E6	167.6E6	466.894	458.230
36) L8 AR-1262-1	8.101	6.920	62089034	112.2E6	239.113	809.202 #
37) L8 AR-1262-2	8.681	7.455	149.0E6	167.6E6	311.852	325.893
38) L8 AR-1262-3	9.011	7.737	27268875	30409220	128.246	147.290
39) L8 AR-1262-4	9.092	7.800	53056755	120.3E6	425.016	307.835 #
40) L8 AR-1262-5	9.820	8.299	38790944	37214850	210.563	200.117
41) L9 AR-1268-1	9.011	7.737	27268875	30409220	61.829	66.193

Data Path : Z:\pestpcbsrv\HPCHEM1\ECD_R\Data\PR111021\
 Data File : PR052574.D
 Signal(s) : Signal #1: ECD1A.ch Signal #2: ECD2B.ch
 Acq On : 10 Nov 2021 21:31
 Operator : AJ\MA
 Sample : M4522-02MS
 Misc :
 ALS Vial : 32 Sample Multiplier: 1

Integration File signal 1: autoint1.e
 Integration File signal 2: autoint2.e
 Quant Time: Nov 11 03:18:24 2021
 Quant Method : Z:\pestpcbsrv\HPCHEM1\ECD_R\Method\PR110921CLP.M
 Quant Title : GC EXTRACTABLES
 QLast Update : Wed Nov 10 04:57:17 2021
 Response via : Initial Calibration
 Integrator: ChemStation

Volume Inj. : 1 µl
 Signal #1 Phase : ZB MR1 Signal #2 Phase: ZB MR2
 Signal #1 Info : 30Mx0.32mmx 0.5µm Signal #2 Info : 30M x 0.32mm x 0.25µm

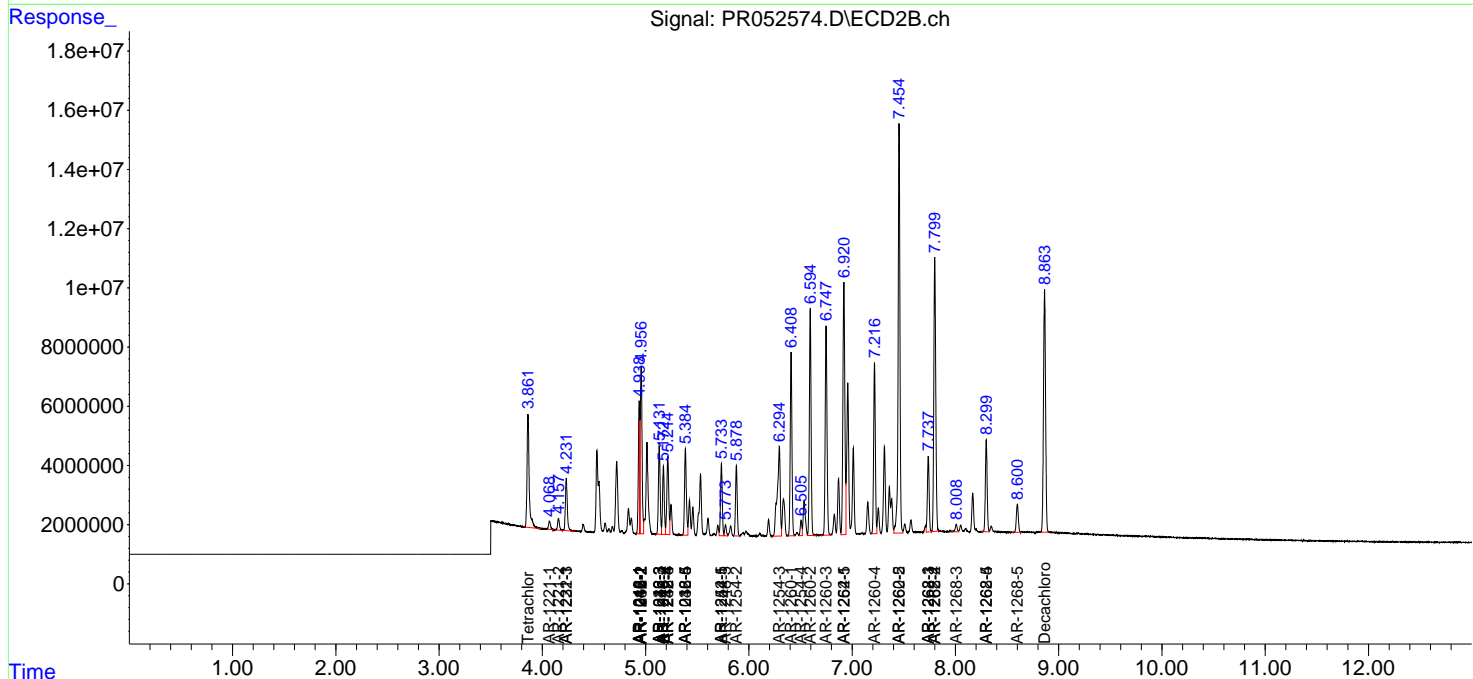
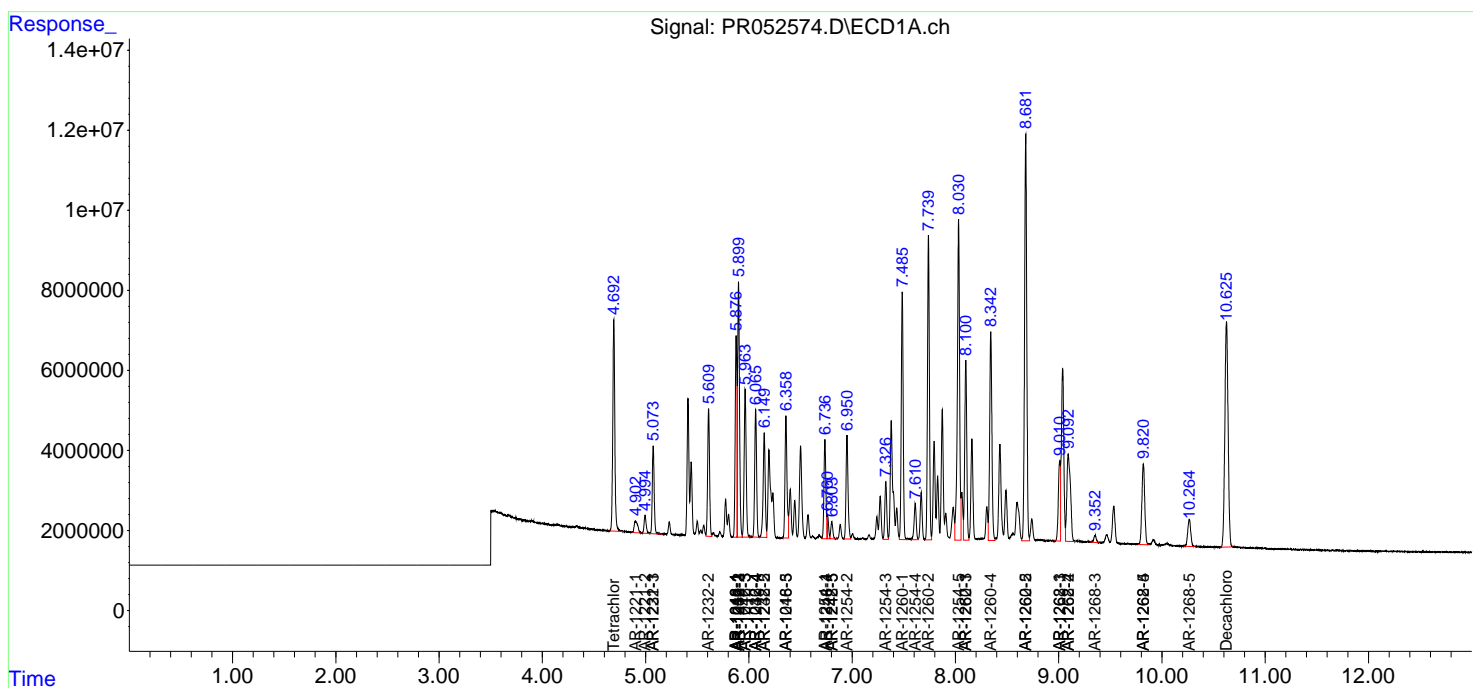
	Compound	RT#1	RT#2	Resp#1	Resp#2	ng/ml	ng/ml
42)	L9 AR-1268-2	9.092	7.800	53056755	120.3E6	131.504	280.105 #
43)	L9 AR-1268-3	9.352	8.008	2909555	3338965	8.424	9.082
44)	L9 AR-1268-4	9.820	8.299	38790944	37214850	244.845	234.314
45)	L9 AR-1268-5	10.265	8.600	13907669	12735618	12.243	10.895

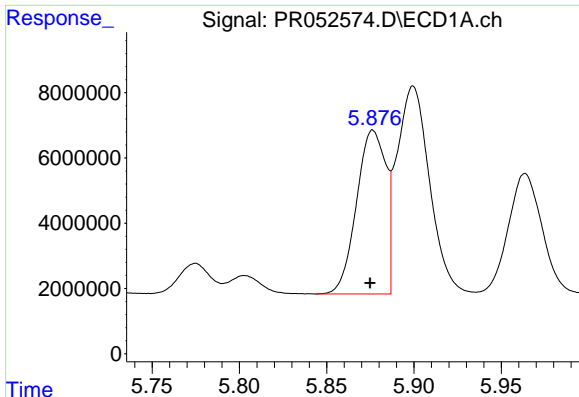
(f)=RT Delta > 1/2 Window (#)=Amounts differ by > 25% (m)=manual int.

Data Path : Z:\pestpcbsrv\HPCHEM1\ECD_R\Data\PR111021\
 Data File : PR052574.D
 Signal(s) : Signal #1: ECD1A.ch Signal #2: ECD2B.ch
 Acq On : 10 Nov 2021 21:31
 Operator : AJ\MA
 Sample : M4522-02MS
 Misc :
 ALS Vial : 32 Sample Multiplier: 1

Integration File signal 1: autoint1.e
 Integration File signal 2: autoint2.e
 Quant Time: Nov 11 03:18:24 2021
 Quant Method : Z:\pestpcbsrv\HPCHEM1\ECD_R\Method\PR110921CLP.M
 Quant Title : GC EXTRACTABLES
 QLast Update : Wed Nov 10 04:57:17 2021
 Response via : Initial Calibration
 Integrator: ChemStation

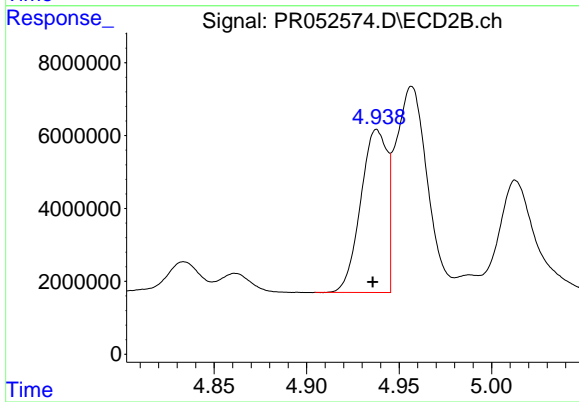
Volume Inj. : 1 µl
 Signal #1 Phase : ZB MR1 Signal #2 Phase: ZB MR2
 Signal #1 Info : 30Mx0.32mmx 0.5µm Signal #2 Info : 30M x 0.32mm x 0.25µm





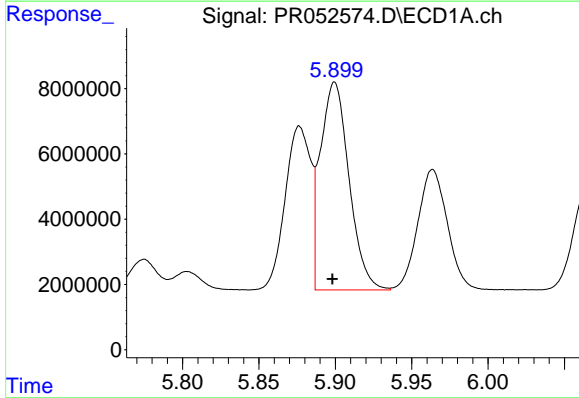
#3 AR-1016-1

R.T.: 5.876 min
Delta R.T.: 0.002 min
Response: 58652198
Conc: 493.58 ng/ml



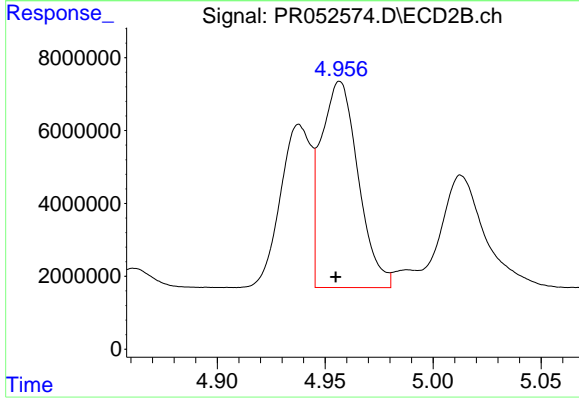
#3 AR-1016-1

R.T.: 4.938 min
Delta R.T.: 0.002 min
Response: 44316093
Conc: 466.99 ng/ml



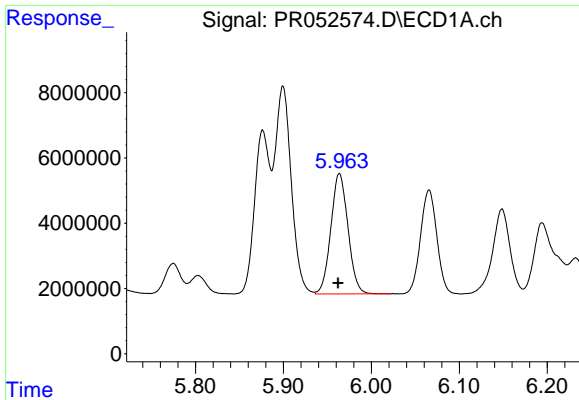
#4 AR-1016-2

R.T.: 5.900 min
Delta R.T.: 0.001 min
Response: 83065992
Conc: 498.74 ng/ml



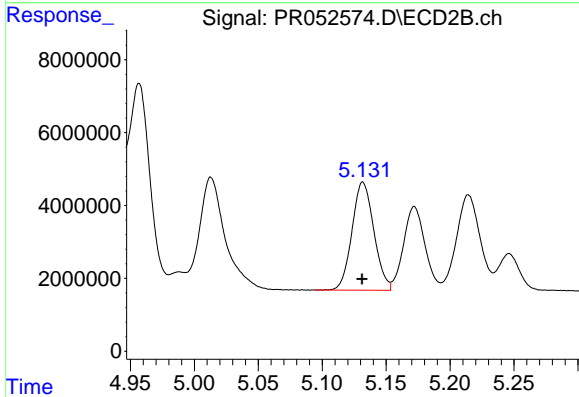
#4 AR-1016-2

R.T.: 4.957 min
Delta R.T.: 0.002 min
Response: 67734346
Conc: 476.69 ng/ml



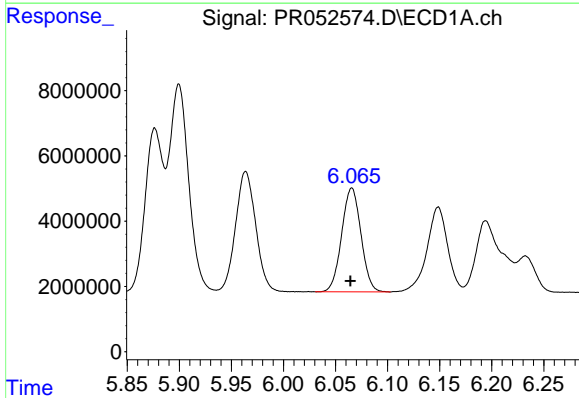
#5 AR-1016-3

R.T.: 5.964 min
Delta R.T.: 0.002 min
Response: 49923316
Conc: 482.77 ng/ml



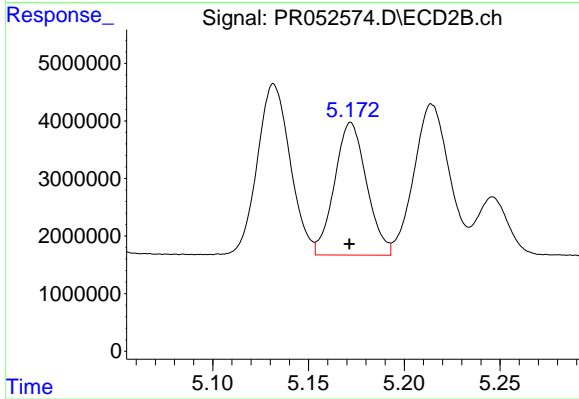
#5 AR-1016-3

R.T.: 5.132 min
Delta R.T.: 0.000 min
Response: 35307232
Conc: 463.23 ng/ml



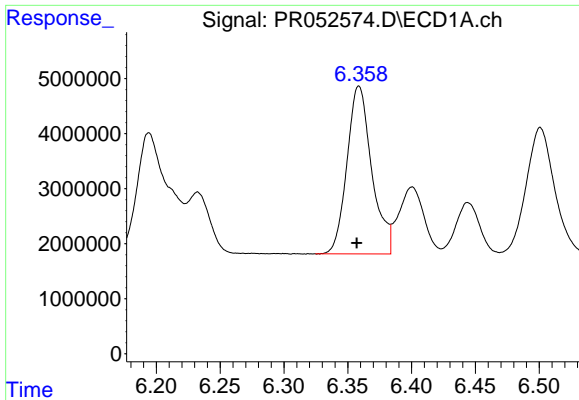
#6 AR-1016-4

R.T.: 6.066 min
Delta R.T.: 0.001 min
Response: 41047681
Conc: 487.75 ng/ml



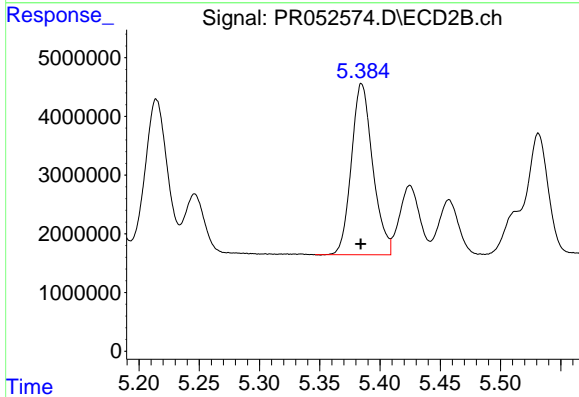
#6 AR-1016-4

R.T.: 5.172 min
Delta R.T.: 0.000 min
Response: 26894126
Conc: 439.22 ng/ml



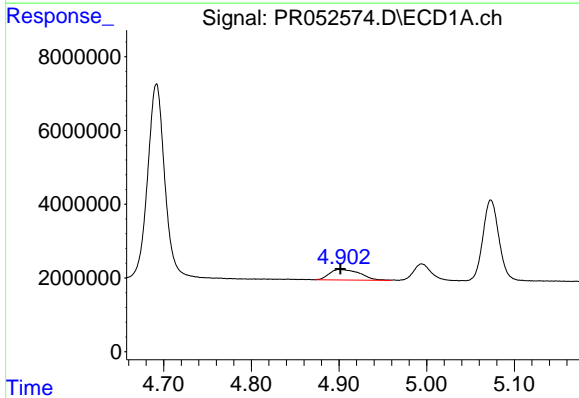
#7 AR-1016-5

R.T.: 6.359 min
Delta R.T.: 0.002 min
Response: 41209918
Conc: 473.12 ng/ml



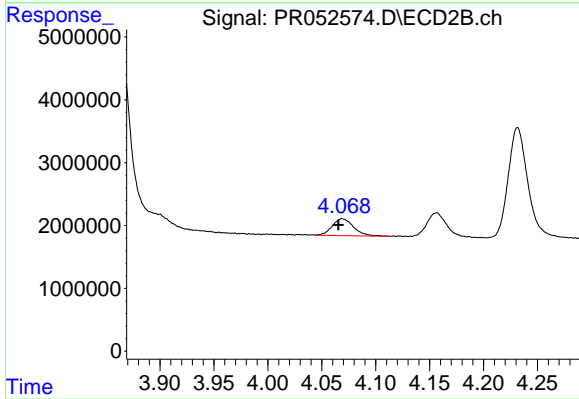
#7 AR-1016-5

R.T.: 5.385 min
Delta R.T.: 0.000 min
Response: 35938153
Conc: 448.64 ng/ml



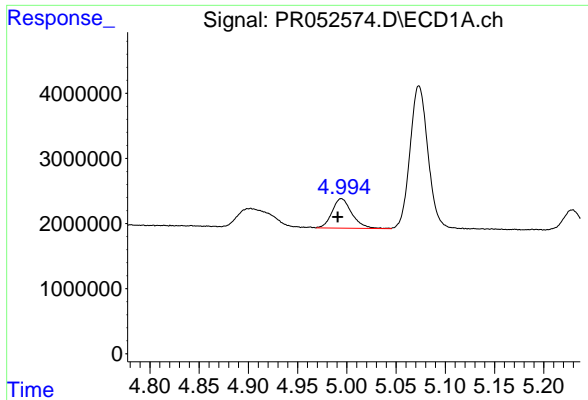
#8 AR-1221-1

R.T.: 4.902 min
Delta R.T.: 0.000 min
Response: 6895048
Conc: 160.10 ng/ml

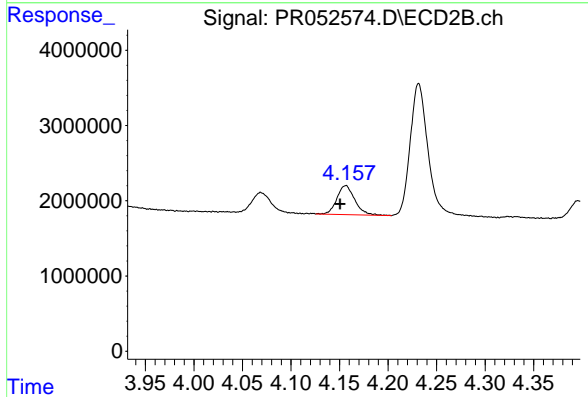


#8 AR-1221-1

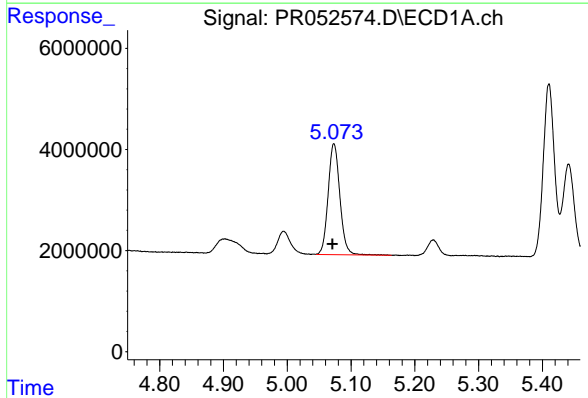
R.T.: 4.069 min
Delta R.T.: 0.003 min
Response: 3725023
Conc: 103.42 ng/ml



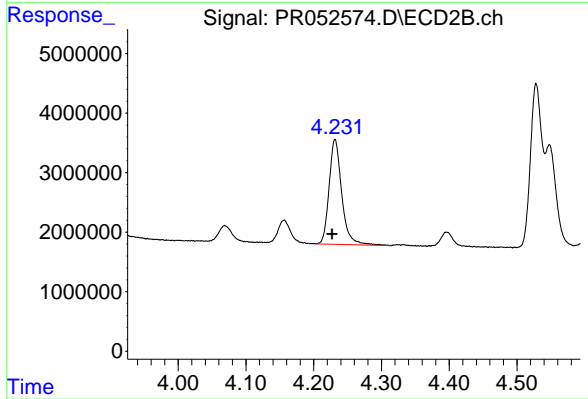
#9 AR-1221-2
 R.T.: 4.994 min
 Delta R.T.: 0.004 min
 Response: 6337343
 Conc: 204.44 ng/ml



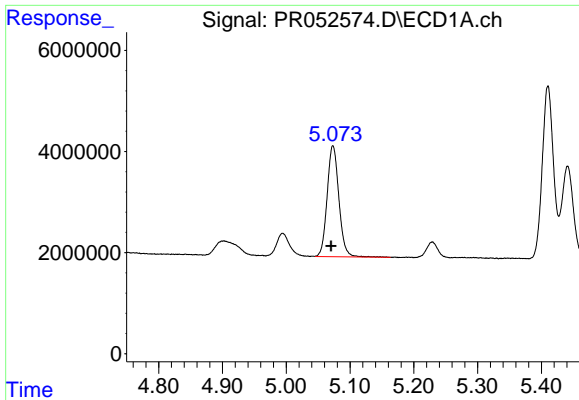
#9 AR-1221-2
 R.T.: 4.157 min
 Delta R.T.: 0.006 min
 Response: 5006370
 Conc: 190.18 ng/ml



#10 AR-1221-3
 R.T.: 5.073 min
 Delta R.T.: 0.003 min
 Response: 28165724
 Conc: 284.42 ng/ml

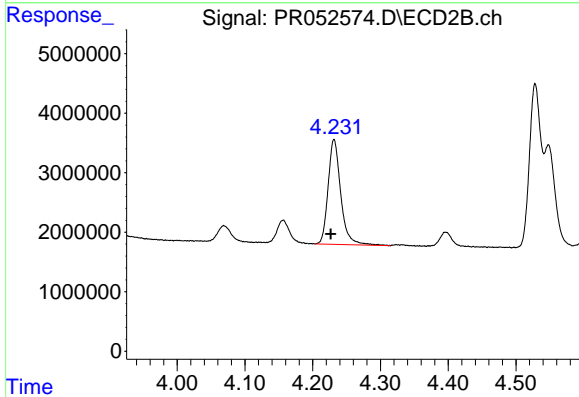


#10 AR-1221-3
 R.T.: 4.232 min
 Delta R.T.: 0.004 min
 Response: 22925849
 Conc: 269.36 ng/ml



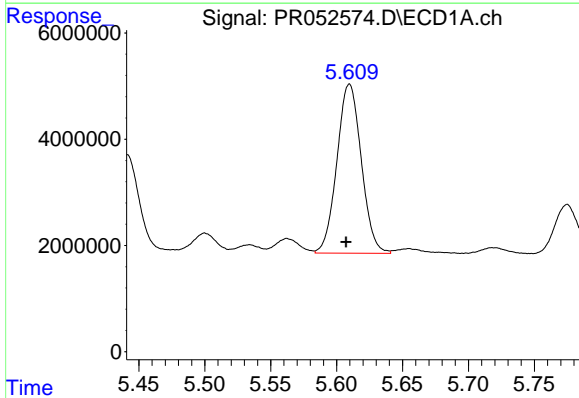
#11 AR-1232-1

R.T.: 5.073 min
Delta R.T.: 0.003 min
Response: 28165724
Conc: 366.83 ng/ml



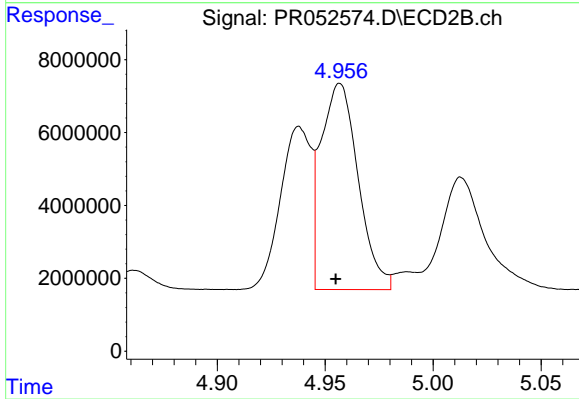
#11 AR-1232-1

R.T.: 4.232 min
Delta R.T.: 0.005 min
Response: 22925849
Conc: 346.57 ng/ml



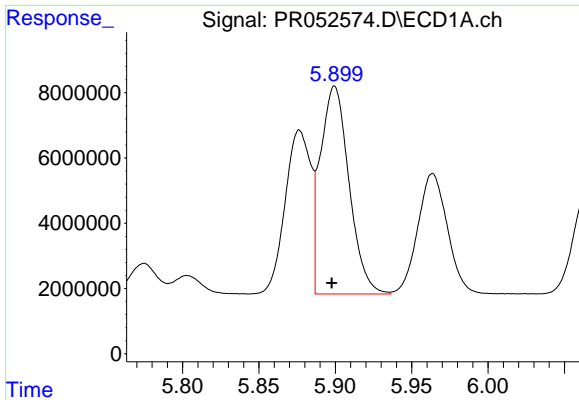
#12 AR-1232-2

R.T.: 5.610 min
Delta R.T.: 0.003 min
Response: 40950244
Conc: 1047.54 ng/ml



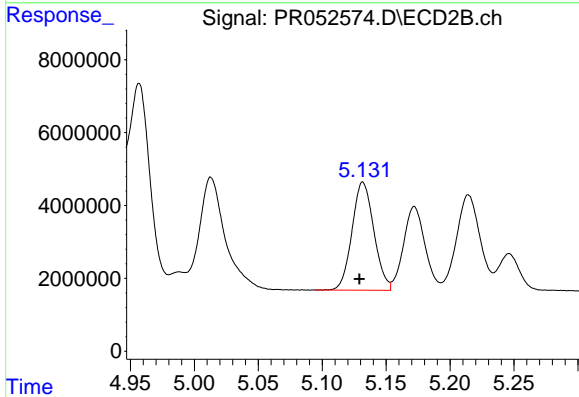
#12 AR-1232-2

R.T.: 4.957 min
Delta R.T.: 0.002 min
Response: 67734346
Conc: 1085.02 ng/ml



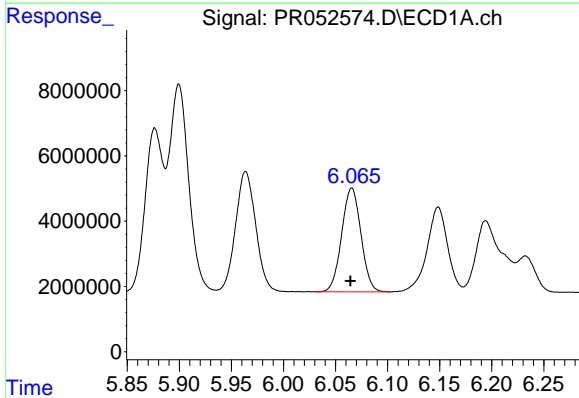
#13 AR-1232-3

R.T.: 5.900 min
Delta R.T.: 0.002 min
Response: 83065992
Conc: 1146.68 ng/ml



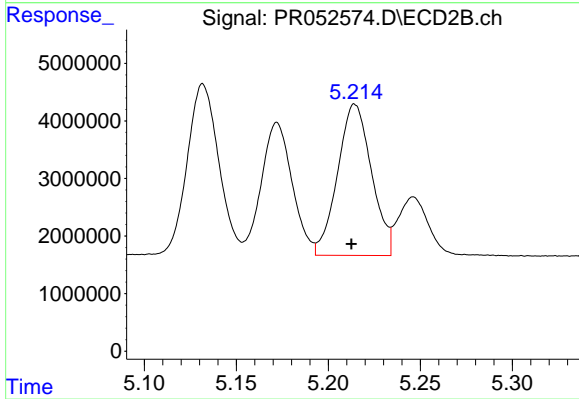
#13 AR-1232-3

R.T.: 5.132 min
Delta R.T.: 0.003 min
Response: 35307232
Conc: 1071.28 ng/ml



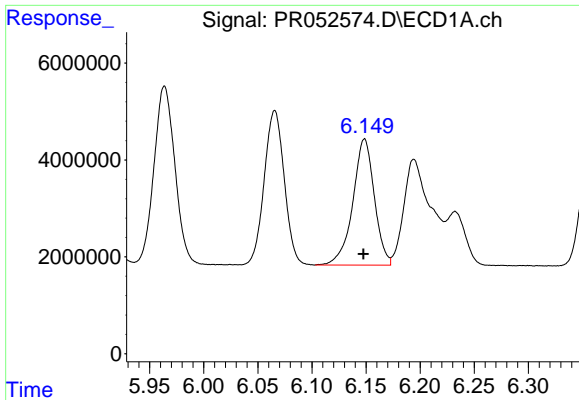
#14 AR-1232-4

R.T.: 6.066 min
Delta R.T.: 0.001 min
Response: 41047681
Conc: 1138.22 ng/ml



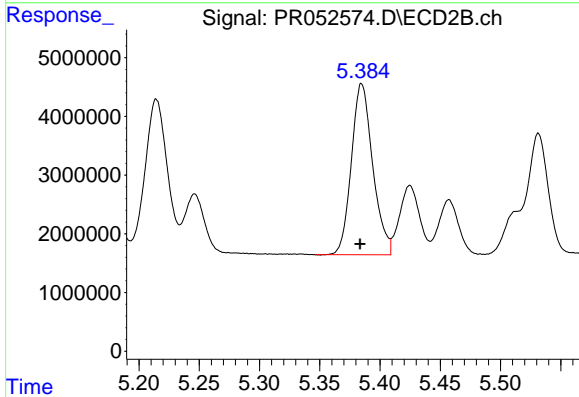
#14 AR-1232-4

R.T.: 5.214 min
Delta R.T.: 0.002 min
Response: 33729415
Conc: 1139.00 ng/ml



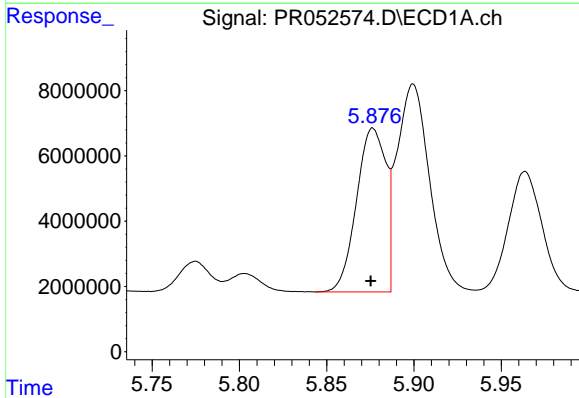
#15 AR-1232-5

R.T.: 6.149 min
Delta R.T.: 0.001 min
Response: 36083102
Conc: 1216.32 ng/ml



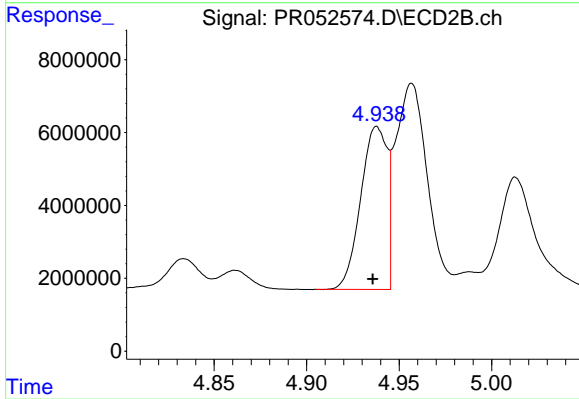
#15 AR-1232-5

R.T.: 5.385 min
Delta R.T.: 0.001 min
Response: 35938153
Conc: 1091.22 ng/ml



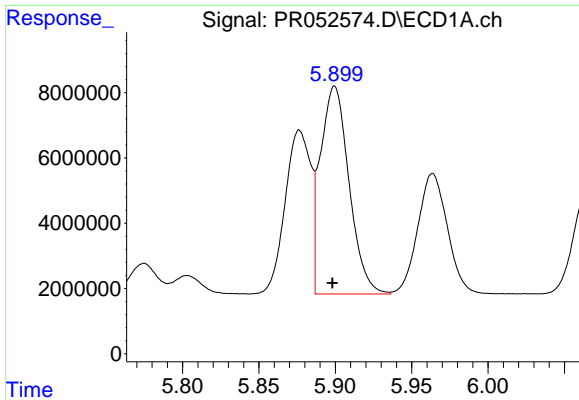
#16 AR-1242-1

R.T.: 5.876 min
Delta R.T.: 0.001 min
Response: 58652198
Conc: 599.81 ng/ml



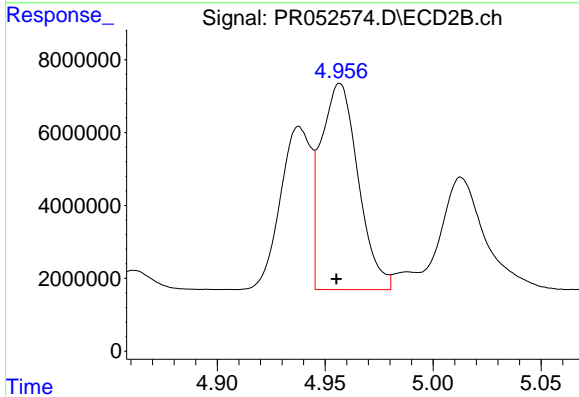
#16 AR-1242-1

R.T.: 4.938 min
Delta R.T.: 0.002 min
Response: 44316093
Conc: 574.00 ng/ml



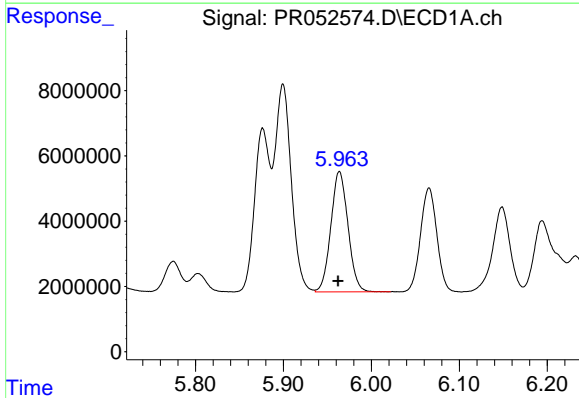
#17 AR-1242-2

R.T.: 5.900 min
Delta R.T.: 0.001 min
Response: 83065992
Conc: 608.48 ng/ml



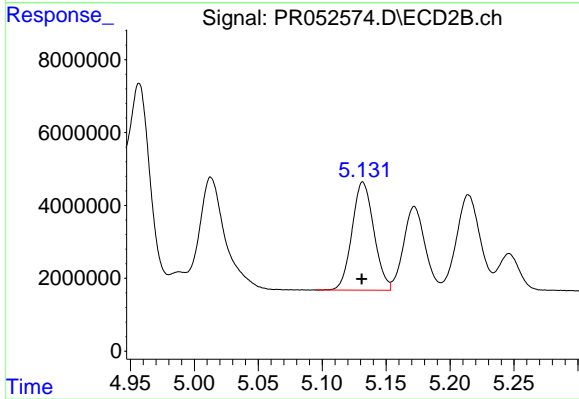
#17 AR-1242-2

R.T.: 4.957 min
Delta R.T.: 0.002 min
Response: 67734346
Conc: 590.56 ng/ml



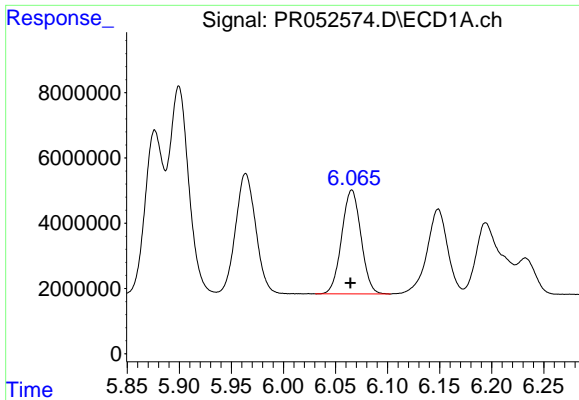
#18 AR-1242-3

R.T.: 5.964 min
Delta R.T.: 0.001 min
Response: 49923316
Conc: 582.25 ng/ml



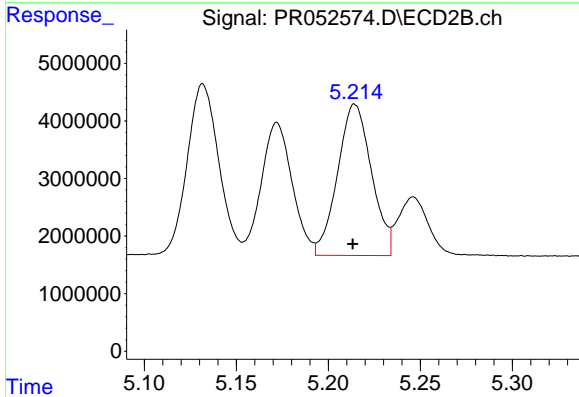
#18 AR-1242-3

R.T.: 5.132 min
Delta R.T.: 0.000 min
Response: 35307232
Conc: 571.79 ng/ml



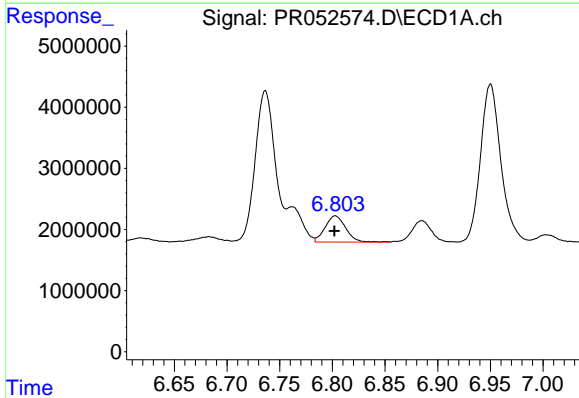
#19 AR-1242-4

R.T.: 6.066 min
Delta R.T.: 0.001 min
Response: 41047681
Conc: 590.27 ng/ml



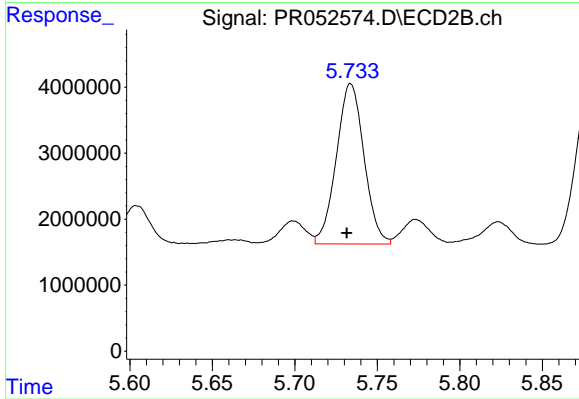
#19 AR-1242-4

R.T.: 5.214 min
Delta R.T.: 0.001 min
Response: 33729415
Conc: 553.14 ng/ml



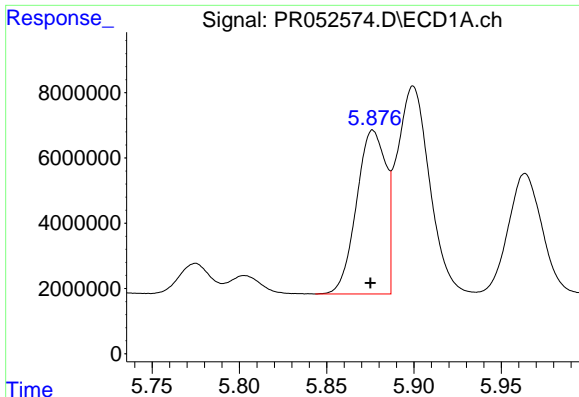
#20 AR-1242-5

R.T.: 6.803 min
Delta R.T.: 0.000 min
Response: 5900432
Conc: 77.40 ng/ml



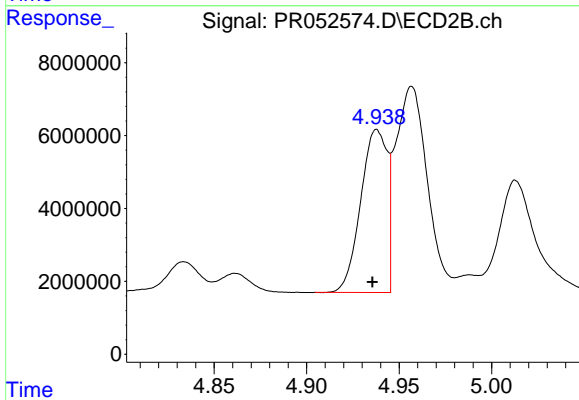
#20 AR-1242-5

R.T.: 5.734 min
Delta R.T.: 0.002 min
Response: 28330829
Conc: 377.27 ng/ml



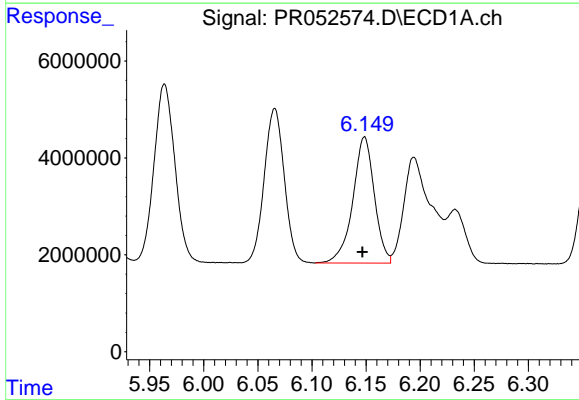
#21 AR-1248-1

R.T.: 5.876 min
Delta R.T.: 0.001 min
Response: 58652198
Conc: 808.43 ng/ml



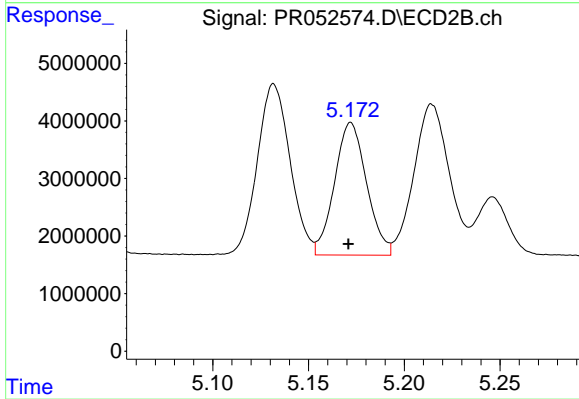
#21 AR-1248-1

R.T.: 4.938 min
Delta R.T.: 0.002 min
Response: 44316093
Conc: 754.83 ng/ml



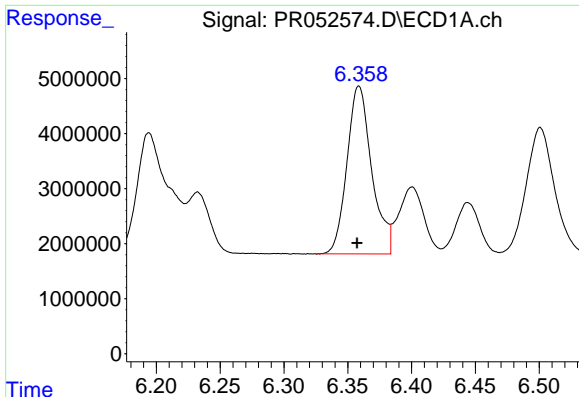
#22 AR-1248-2

R.T.: 6.149 min
Delta R.T.: 0.002 min
Response: 36083102
Conc: 340.32 ng/ml



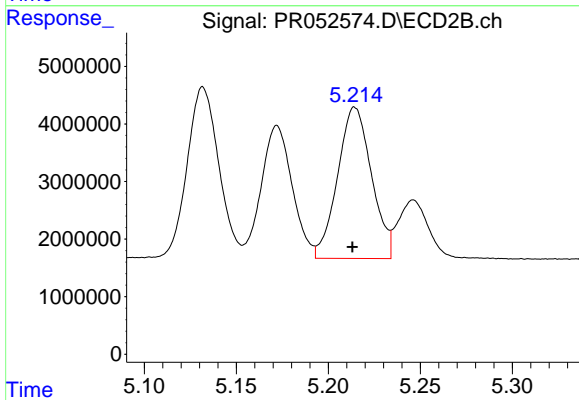
#22 AR-1248-2

R.T.: 5.172 min
Delta R.T.: 0.001 min
Response: 26894126
Conc: 321.48 ng/ml



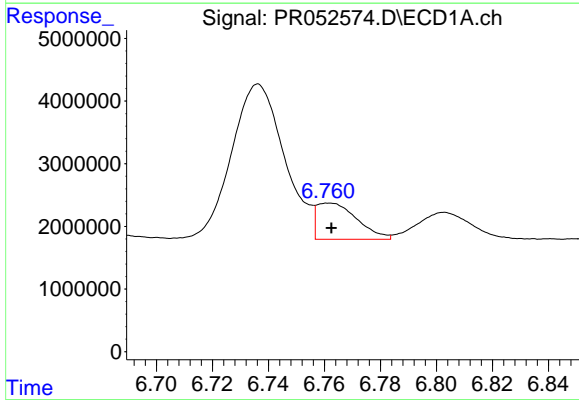
#23 AR-1248-3

R.T.: 6.359 min
 Delta R.T.: 0.001 min
 Response: 41209918
 Conc: 353.49 ng/ml



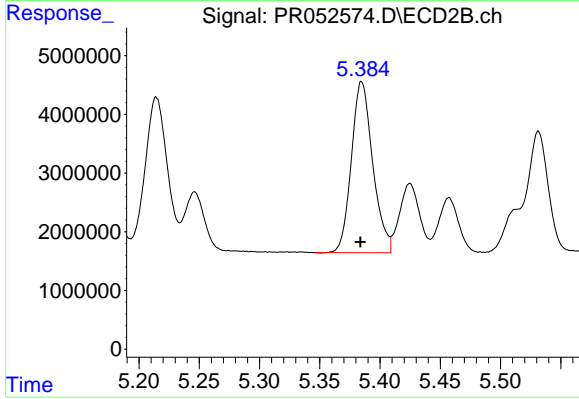
#23 AR-1248-3

R.T.: 5.214 min
 Delta R.T.: 0.001 min
 Response: 33729415
 Conc: 381.12 ng/ml



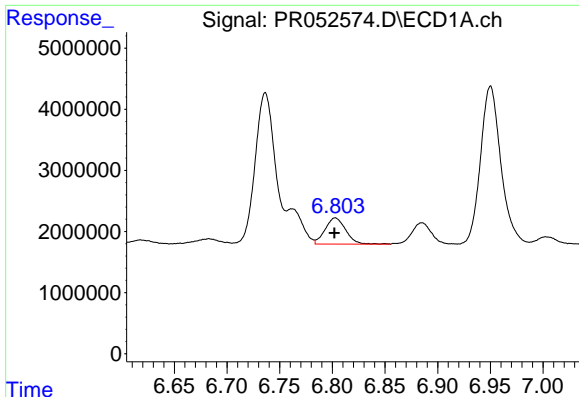
#24 AR-1248-4

R.T.: 6.762 min
 Delta R.T.: 0.000 min
 Response: 5805645
 Conc: 44.52 ng/ml



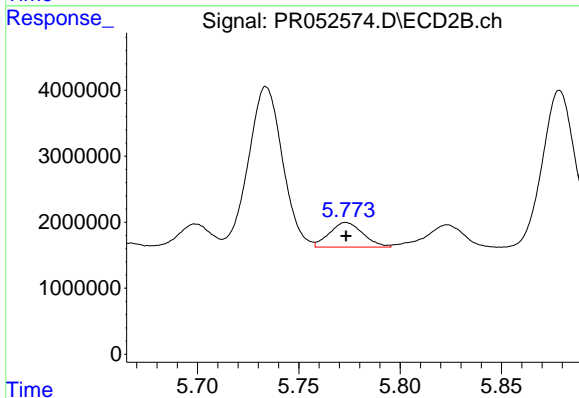
#24 AR-1248-4

R.T.: 5.385 min
 Delta R.T.: 0.001 min
 Response: 35938153
 Conc: 340.75 ng/ml



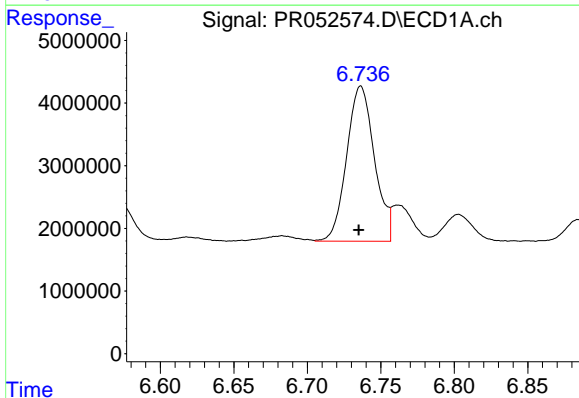
#25 AR-1248-5

R.T.: 6.803 min
Delta R.T.: 0.000 min
Response: 5900432
Conc: 47.14 ng/ml



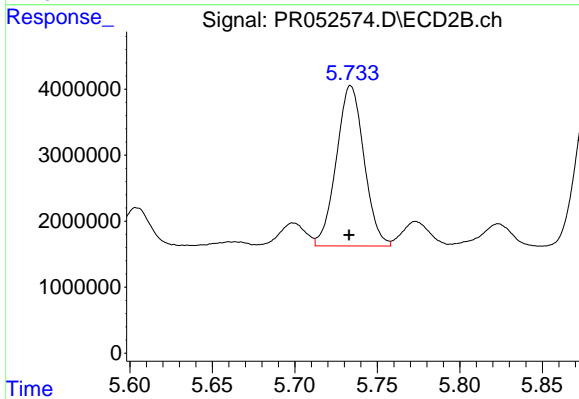
#25 AR-1248-5

R.T.: 5.773 min
Delta R.T.: 0.000 min
Response: 4285406
Conc: 41.62 ng/ml



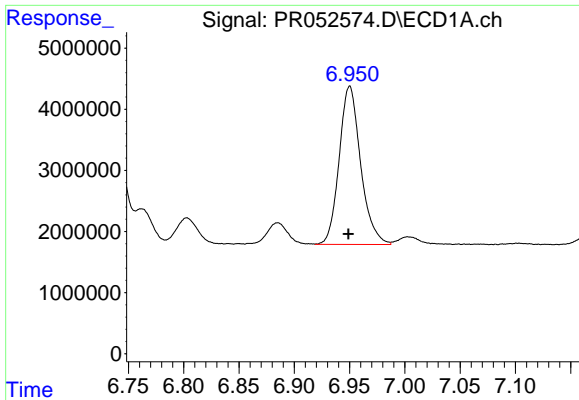
#26 AR-1254-1

R.T.: 6.736 min
Delta R.T.: 0.001 min
Response: 32536328
Conc: 245.65 ng/ml



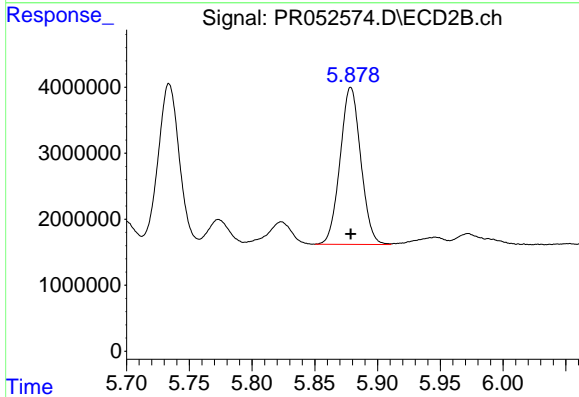
#26 AR-1254-1

R.T.: 5.734 min
Delta R.T.: 0.000 min
Response: 28330829
Conc: 183.13 ng/ml



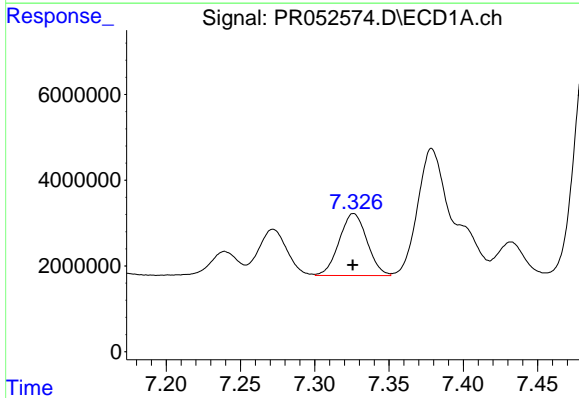
#27 AR-1254-2

R.T.: 6.950 min
Delta R.T.: 0.001 min
Response: 35011892
Conc: 171.05 ng/ml



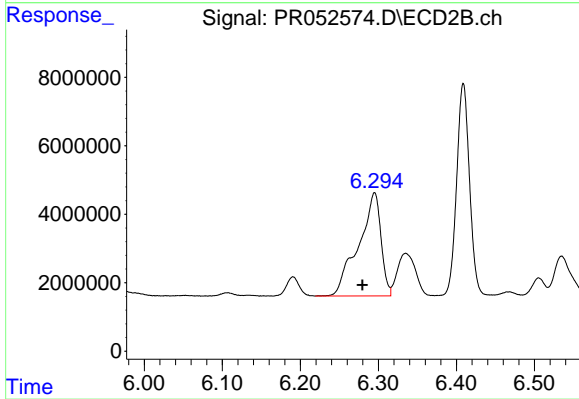
#27 AR-1254-2

R.T.: 5.879 min
Delta R.T.: 0.000 min
Response: 27261900
Conc: 202.92 ng/ml



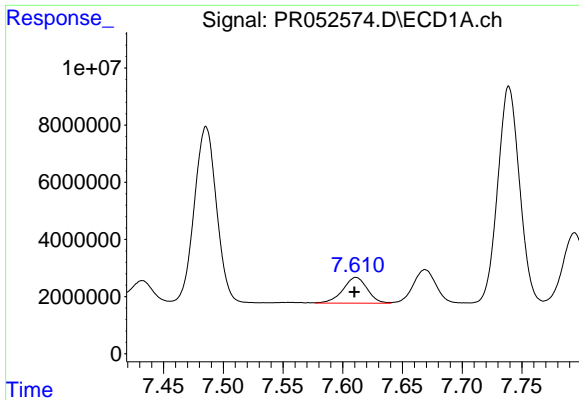
#28 AR-1254-3

R.T.: 7.326 min
Delta R.T.: 0.000 min
Response: 18817060
Conc: 88.59 ng/ml



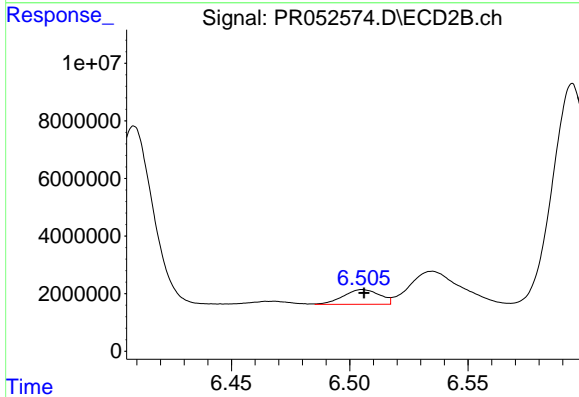
#28 AR-1254-3

R.T.: 6.295 min
Delta R.T.: 0.016 min
Response: 60225831
Conc: 266.38 ng/ml



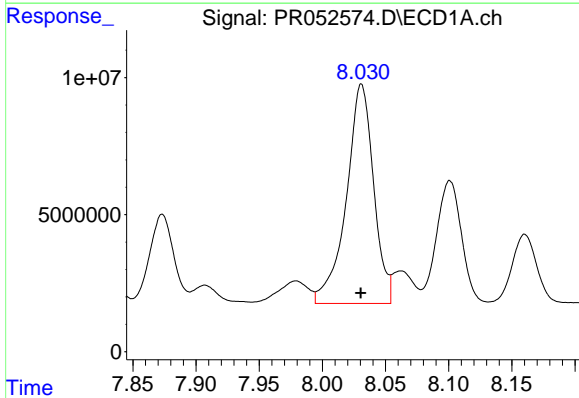
#29 AR-1254-4

R.T.: 7.611 min
Delta R.T.: 0.001 min
Response: 12835976
Conc: 79.52 ng/ml



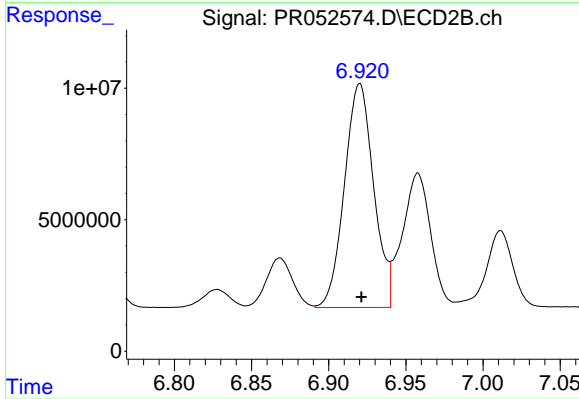
#29 AR-1254-4

R.T.: 6.505 min
Delta R.T.: 0.000 min
Response: 5478219
Conc: 39.51 ng/ml



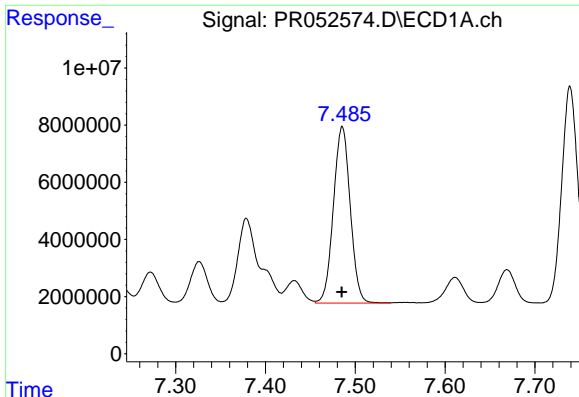
#30 AR-1254-5

R.T.: 8.031 min
Delta R.T.: 0.000 min
Response: 120410955
Conc: 686.80 ng/ml



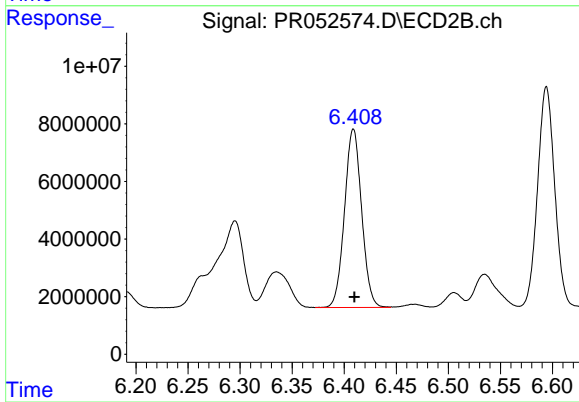
#30 AR-1254-5

R.T.: 6.920 min
Delta R.T.: -0.001 min
Response: 112218830
Conc: 536.14 ng/ml



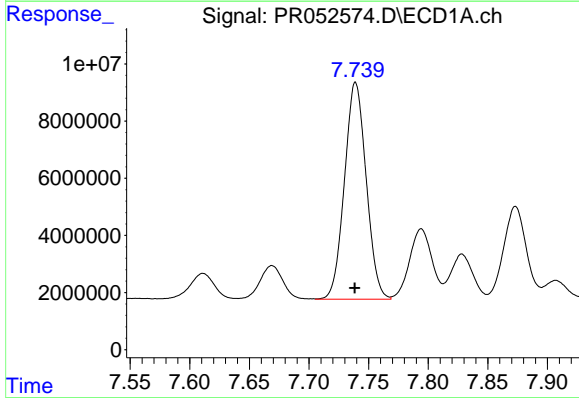
#31 AR-1260-1

R.T.: 7.486 min
Delta R.T.: 0.000 min
Response: 80391267
Conc: 545.97 ng/ml



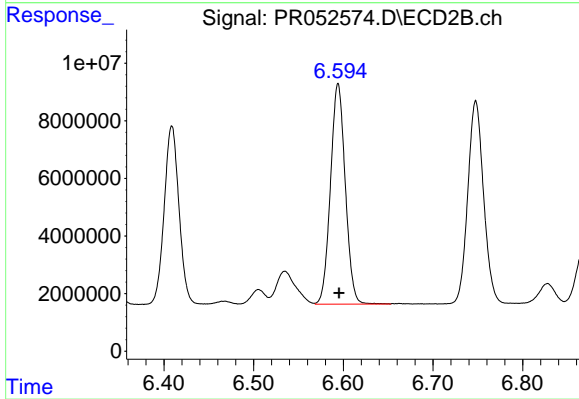
#31 AR-1260-1

R.T.: 6.409 min
Delta R.T.: 0.000 min
Response: 70943412
Conc: 509.80 ng/ml



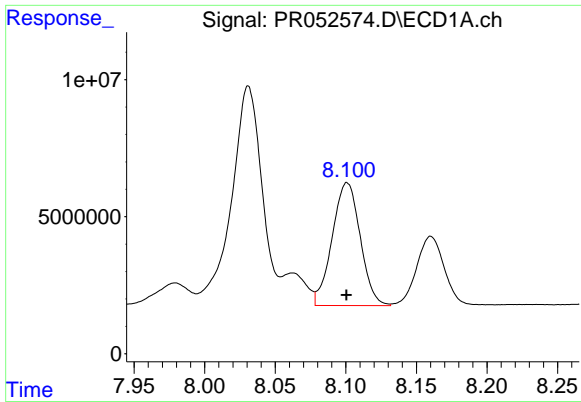
#32 AR-1260-2

R.T.: 7.739 min
Delta R.T.: 0.000 min
Response: 96329440
Conc: 541.92 ng/ml



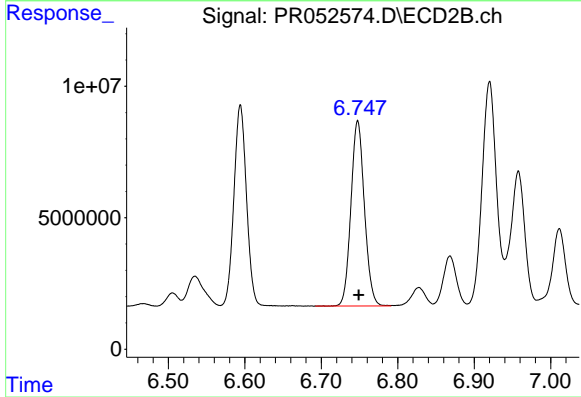
#32 AR-1260-2

R.T.: 6.594 min
Delta R.T.: 0.000 min
Response: 87764239
Conc: 524.52 ng/ml



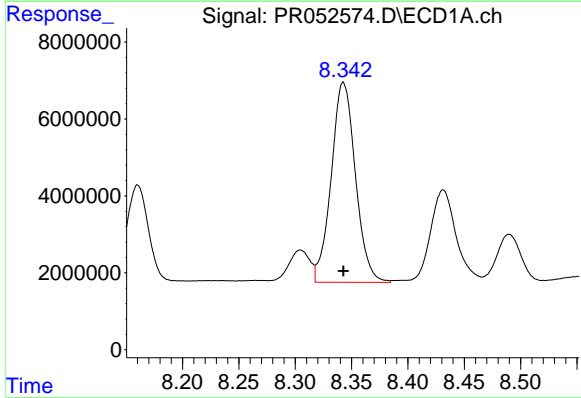
#33 AR-1260-3

R.T.: 8.101 min
 Delta R.T.: 0.000 min
 Response: 62089034
 Conc: 446.47 ng/ml



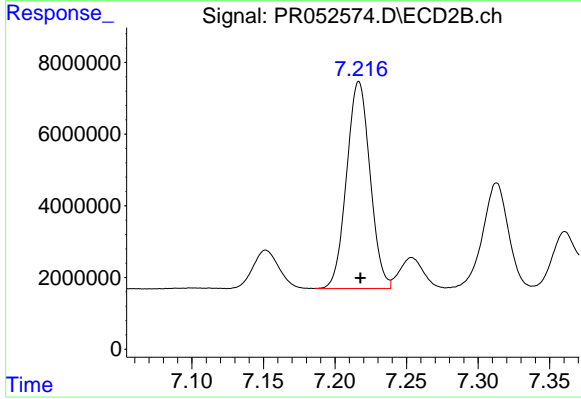
#33 AR-1260-3

R.T.: 6.748 min
 Delta R.T.: -0.001 min
 Response: 86308279
 Conc: 519.85 ng/ml



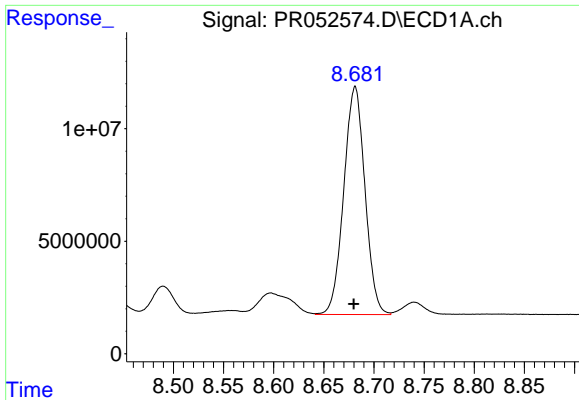
#34 AR-1260-4

R.T.: 8.343 min
 Delta R.T.: 0.000 min
 Response: 77823241
 Conc: 477.57 ng/ml



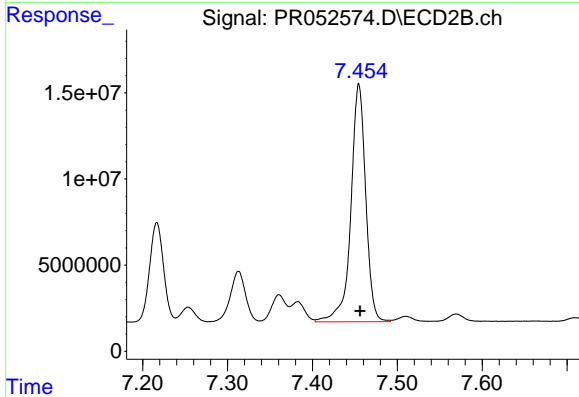
#34 AR-1260-4

R.T.: 7.217 min
 Delta R.T.: -0.001 min
 Response: 65917972
 Conc: 439.77 ng/ml



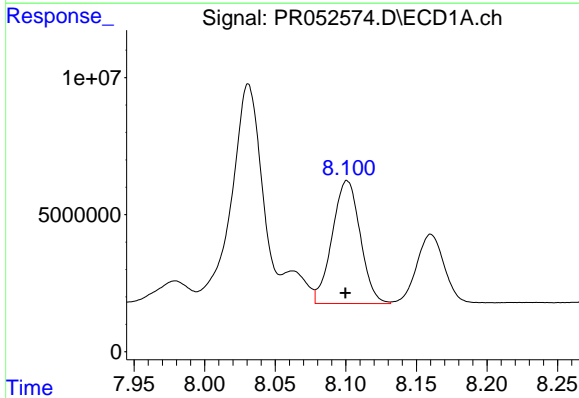
#35 AR-1260-5

R.T.: 8.681 min
Delta R.T.: 0.001 min
Response: 149035186
Conc: 466.89 ng/ml



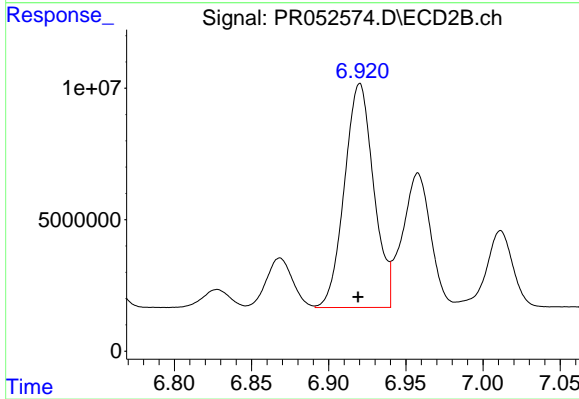
#35 AR-1260-5

R.T.: 7.455 min
Delta R.T.: -0.001 min
Response: 167591354
Conc: 458.23 ng/ml



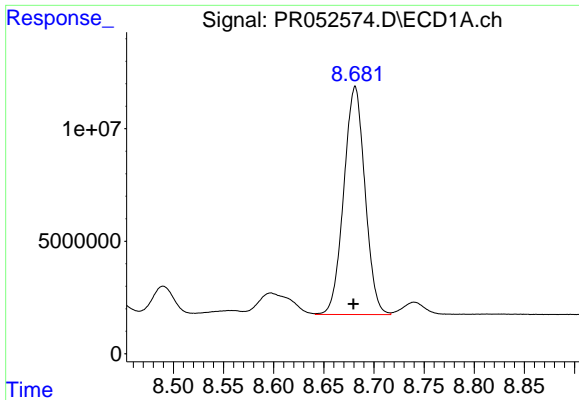
#36 AR-1262-1

R.T.: 8.101 min
Delta R.T.: 0.001 min
Response: 62089034
Conc: 239.11 ng/ml



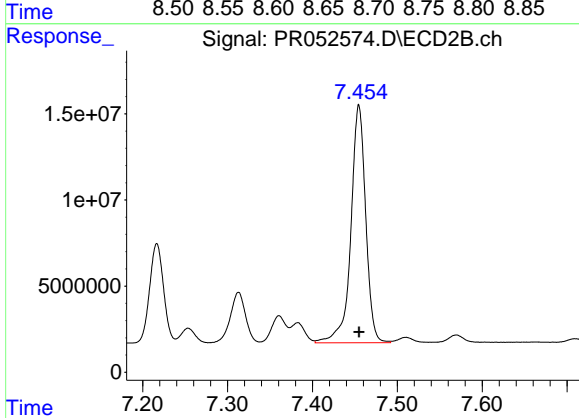
#36 AR-1262-1

R.T.: 6.920 min
Delta R.T.: 0.001 min
Response: 112218830
Conc: 809.20 ng/ml



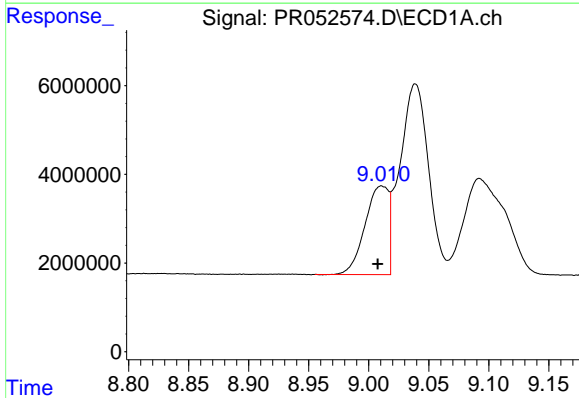
#37 AR-1262-2

R.T.: 8.681 min
 Delta R.T.: 0.002 min
 Response: 149035186
 Conc: 311.85 ng/ml



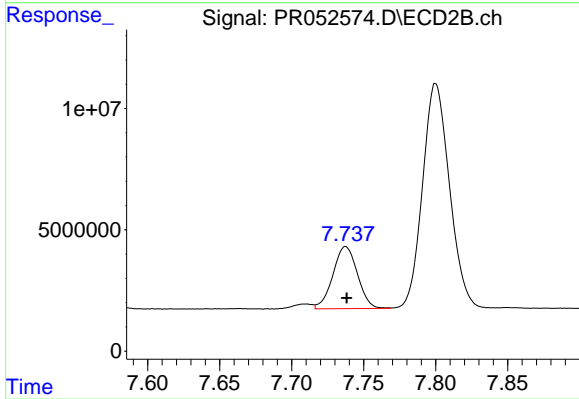
#37 AR-1262-2

R.T.: 7.455 min
 Delta R.T.: 0.000 min
 Response: 167591354
 Conc: 325.89 ng/ml



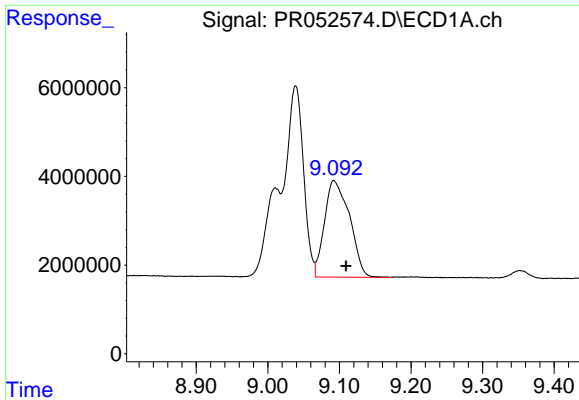
#38 AR-1262-3

R.T.: 9.011 min
 Delta R.T.: 0.003 min
 Response: 27268875
 Conc: 128.25 ng/ml

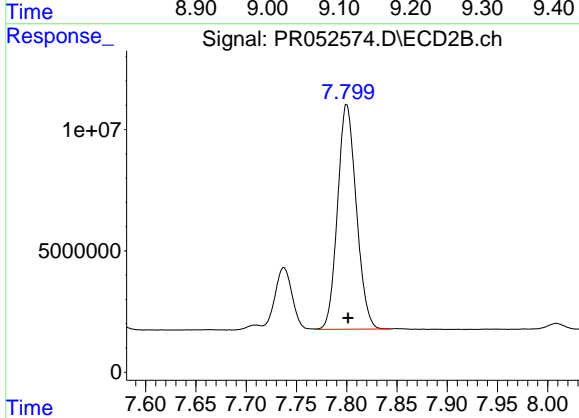


#38 AR-1262-3

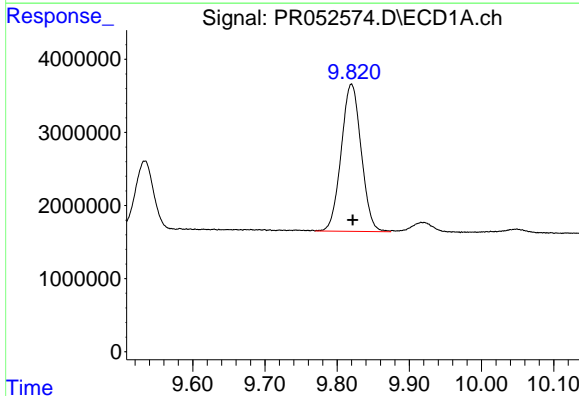
R.T.: 7.737 min
 Delta R.T.: 0.000 min
 Response: 30409220
 Conc: 147.29 ng/ml



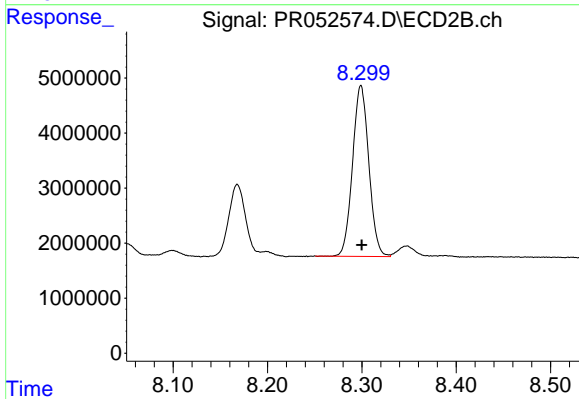
#39 AR-1262-4
R.T.: 9.092 min
Delta R.T.: -0.017 min
Response: 53056755
Conc: 425.02 ng/ml



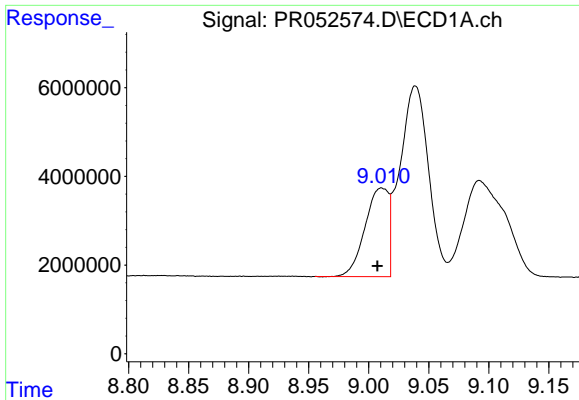
#39 AR-1262-4
R.T.: 7.800 min
Delta R.T.: -0.001 min
Response: 120340154
Conc: 307.84 ng/ml



#40 AR-1262-5
R.T.: 9.820 min
Delta R.T.: -0.002 min
Response: 38790944
Conc: 210.56 ng/ml

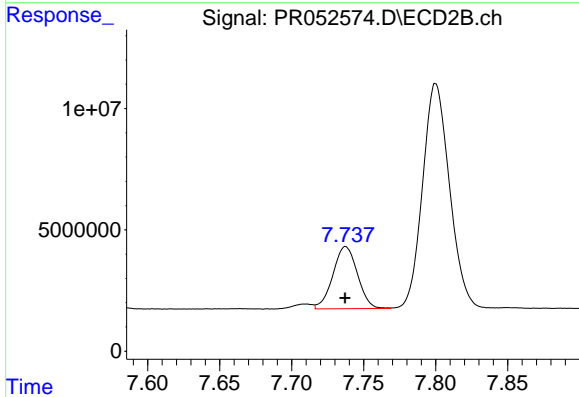


#40 AR-1262-5
R.T.: 8.299 min
Delta R.T.: 0.000 min
Response: 37214850
Conc: 200.12 ng/ml



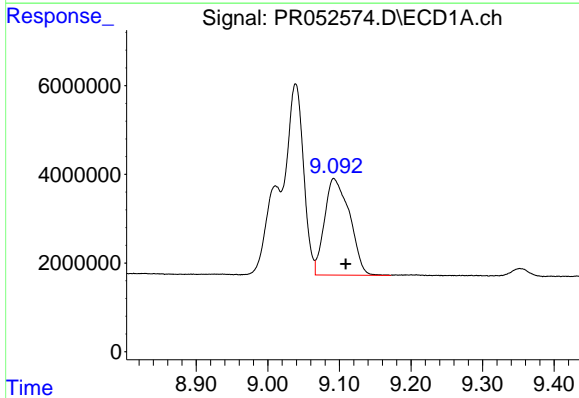
#41 AR-1268-1

R.T.: 9.011 min
Delta R.T.: 0.003 min
Response: 27268875
Conc: 61.83 ng/ml



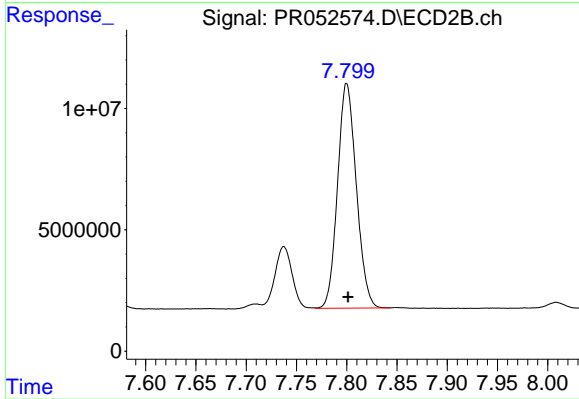
#41 AR-1268-1

R.T.: 7.737 min
Delta R.T.: 0.000 min
Response: 30409220
Conc: 66.19 ng/ml



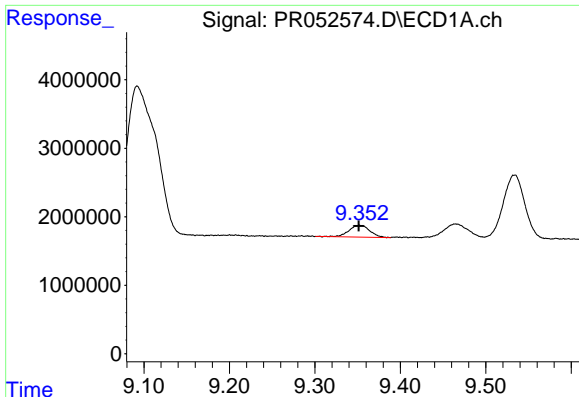
#42 AR-1268-2

R.T.: 9.092 min
Delta R.T.: -0.017 min
Response: 53056755
Conc: 131.50 ng/ml



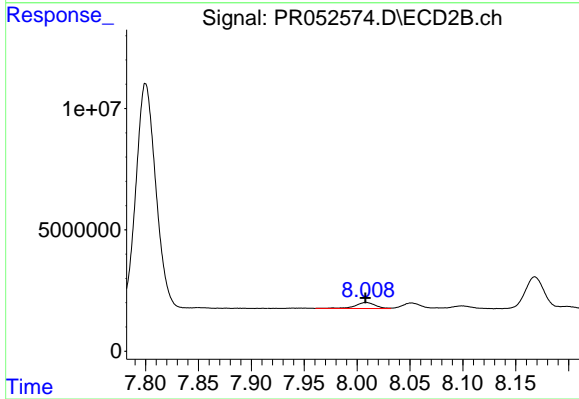
#42 AR-1268-2

R.T.: 7.800 min
Delta R.T.: -0.001 min
Response: 120340154
Conc: 280.11 ng/ml



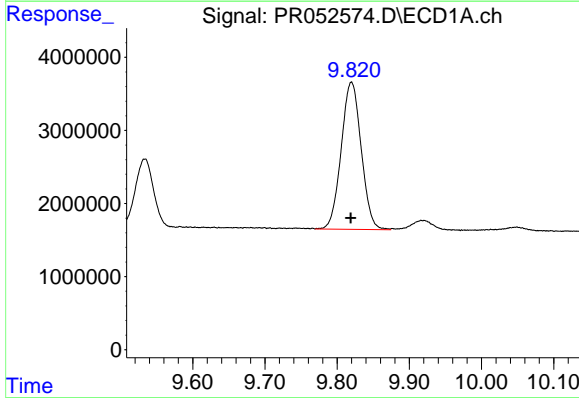
#43 AR-1268-3

R.T.: 9.352 min
Delta R.T.: 0.000 min
Response: 2909555
Conc: 8.42 ng/ml



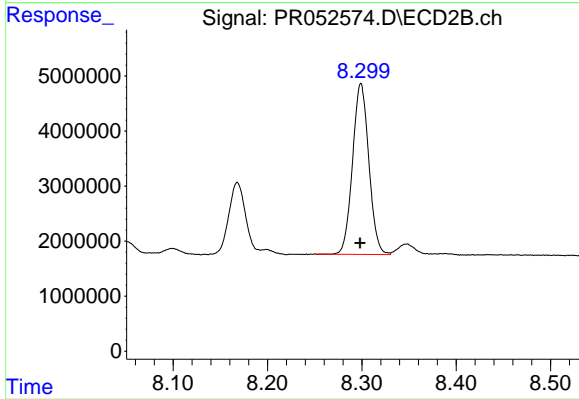
#43 AR-1268-3

R.T.: 8.008 min
Delta R.T.: 0.000 min
Response: 3338965
Conc: 9.08 ng/ml



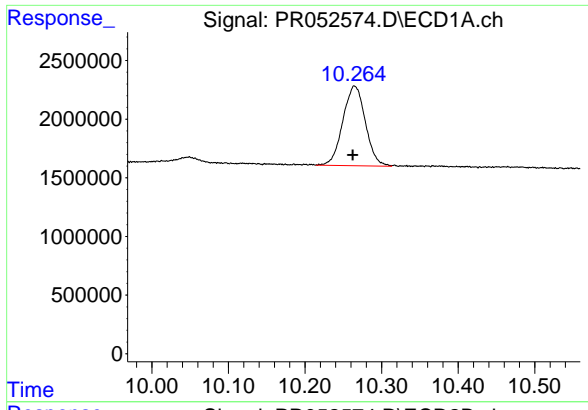
#44 AR-1268-4

R.T.: 9.820 min
Delta R.T.: 0.001 min
Response: 38790944
Conc: 244.85 ng/ml



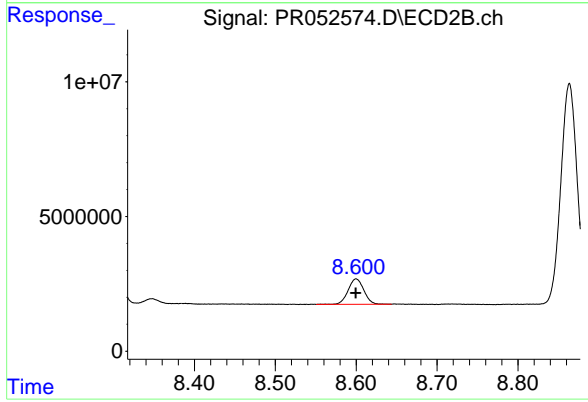
#44 AR-1268-4

R.T.: 8.299 min
Delta R.T.: 0.000 min
Response: 37214850
Conc: 234.31 ng/ml



#45 AR-1268-5

R.T.: 10.265 min
Delta R.T.: 0.002 min
Response: 13907669
Conc: 12.24 ng/ml



#45 AR-1268-5

R.T.: 8.600 min
Delta R.T.: 0.000 min
Response: 12735618
Conc: 10.89 ng/ml