

Data Path : Z:\pestpcbsrv\HPCHEM1\ECD_R\Data\PR111124\
 Data File : PR069095.D
 Signal(s) : Signal #1: ECD1A.ch Signal #2: ECD2B.ch
 Acq On : 11 Nov 2024 14:05
 Operator : AJ\MA
 Sample : P4687-17
 Misc :
 ALS Vial : 23 Sample Multiplier: 1

Instrument :
 ECD_R
 ClientSampleId :
 C0CD4

Integration File signal 1: autoint1.e
 Integration File signal 2: autoint2.e
 Quant Time: Nov 11 23:29:50 2024
 Quant Method : Z:\pestpcbsrv\HPCHEM1\ECD_R\Method\PR102924CLP.M
 Quant Title : GC EXTRACTABLES
 QLast Update : Tue Oct 29 14:51:31 2024
 Response via : Initial Calibration
 Integrator: ChemStation

Volume Inj. : 1 µl
 Signal #1 Phase : ZB MR2 Signal #2 Phase: ZB MR2
 Signal #1 Info : 30Mx0.32mmx 0.5µm Signal #2 Info : 30M x 0.32mm x 0.25µm

Compound	RT#1	RT#2	Resp#1	Resp#2	ng/ml	ng/ml

System Monitoring Compounds						
1) SA Tetrachlo...	3.641	2.973	18784509	122.0E6	18.895	20.339
2) SA Decachlor...	9.533	8.257	11148806	75731049	33.441	31.169
Target Compounds						
3) L1 AR-1016-1	4.815f	4.126	1536721	452852	52.080	2.444 #
4) L1 AR-1016-2	0.000	4.126	0	452852	N.D.	1.693 #
6) L1 AR-1016-4	0.000	4.369	0	652134	N.D.	5.531 #
8) L2 AR-1221-1	0.000	3.209	0	235087	N.D.	3.286 #
9) L2 AR-1221-2	0.000	3.277	0	1887440	N.D.	37.185 #
12) L3 AR-1232-2	0.000	4.126	0	452852	N.D.	3.746 #
14) L3 AR-1232-4	0.000	4.369	0	652134	N.D.	11.864 #
16) L4 AR-1242-1	4.815f	4.126	1536721	452852	61.879	2.926 #
17) L4 AR-1242-2	0.000	4.126	0	452852	N.D.	2.044 #
19) L4 AR-1242-4	0.000	4.369	0	652134	N.D.	5.588 #
20) L4 AR-1242-5	0.000	4.962	0	4598994	N.D.	25.080 #
21) L5 AR-1248-1	4.815f	4.126	1536721	452852	86.055	4.069 #
22) L5 AR-1248-2	0.000	4.369	0	652134	N.D.	4.104 #
23) L5 AR-1248-3	0.000	4.369	0	652134	N.D.	3.975 #
25) L5 AR-1248-5	0.000	4.962	0	4598994	N.D.	19.105 #
26) L6 AR-1254-1	0.000	4.962	0	4598994	N.D.	12.915 #
28) L6 AR-1254-3	0.000	5.497	0	2473131	N.D.	5.917 #
45) L9 AR-1268-5	0.000	8.009	0	1079757	N.D.	0.672 #

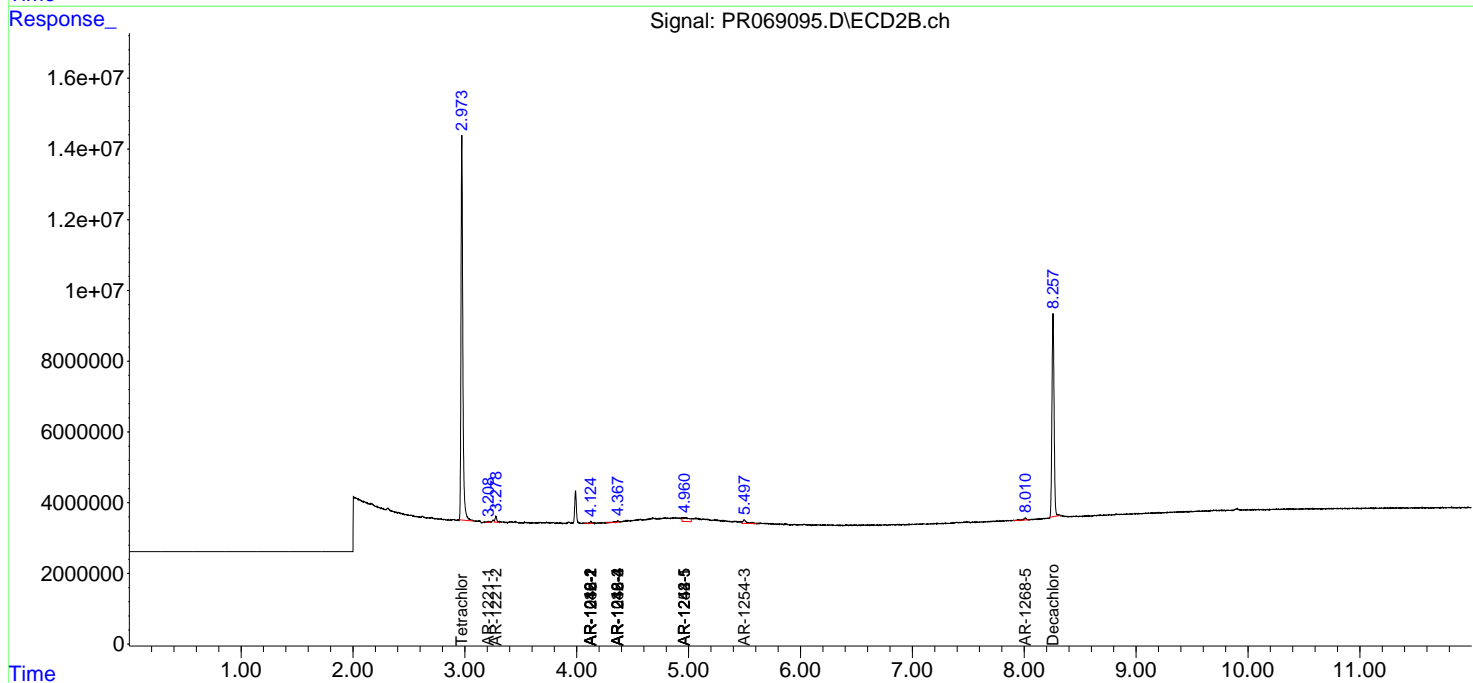
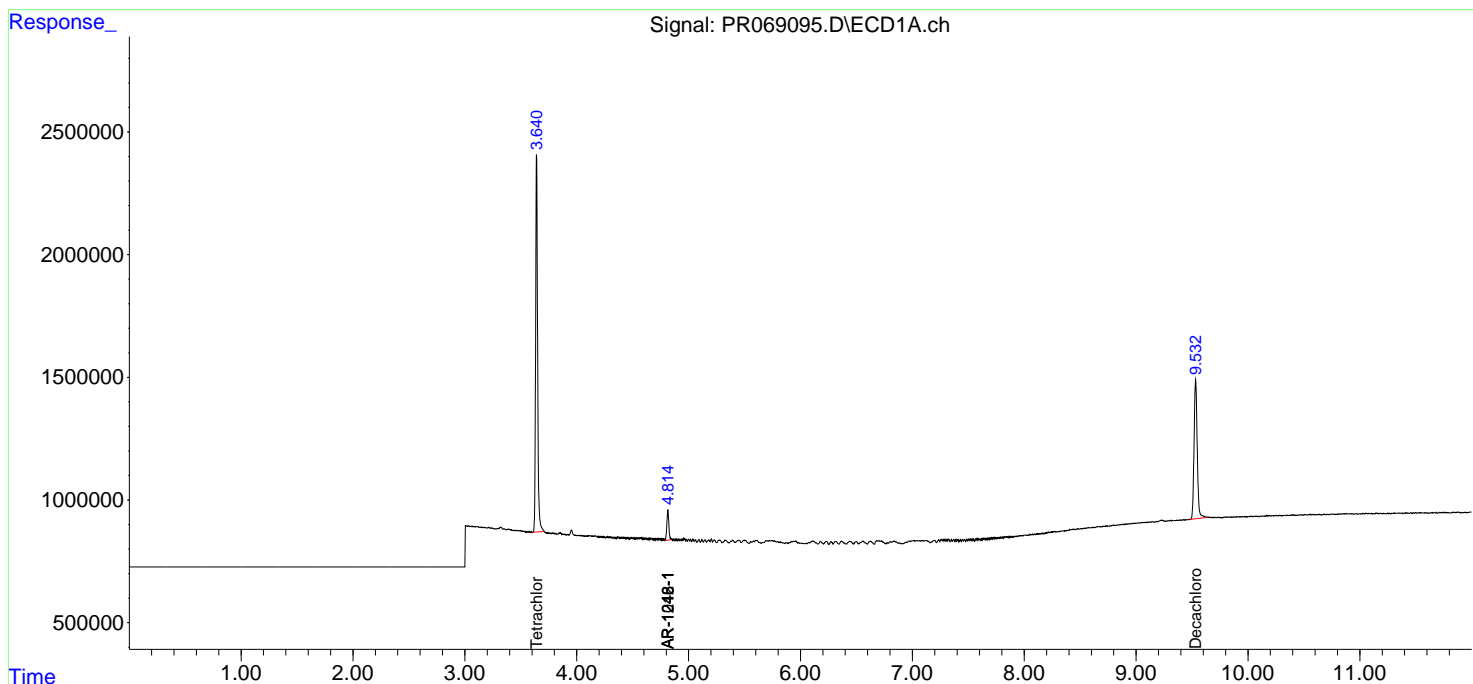
(f)=RT Delta > 1/2 Window (#)=Amounts differ by > 25% (m)=manual int.

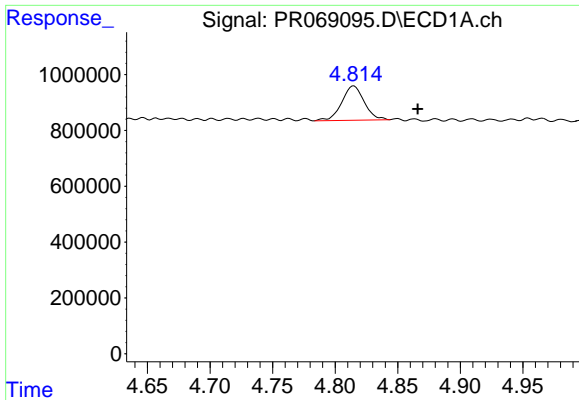
Data Path : Z:\pestpcbsrv\HPCHEM1\ECD_R\Data\PR111124\
 Data File : PR069095.D
 Signal(s) : Signal #1: ECD1A.ch Signal #2: ECD2B.ch
 Acq On : 11 Nov 2024 14:05
 Operator : AJ\MA
 Sample : P4687-17
 Misc :
 ALS Vial : 23 Sample Multiplier: 1

Instrument :
 ECD_R
 ClientSampleId :
 C0CD4

Integration File signal 1: autoint1.e
 Integration File signal 2: autoint2.e
 Quant Time: Nov 11 23:29:50 2024
 Quant Method : Z:\pestpcbsrv\HPCHEM1\ECD_R\Method\PR102924CLP.M
 Quant Title : GC EXTRACTABLES
 QLast Update : Tue Oct 29 14:51:31 2024
 Response via : Initial Calibration
 Integrator: ChemStation

Volume Inj. : 1 µl
 Signal #1 Phase : ZB MR1 Signal #2 Phase: ZB MR2
 Signal #1 Info : 30Mx0.32mmx 0.5µm Signal #2 Info : 30M x 0.32mm x 0.25µm

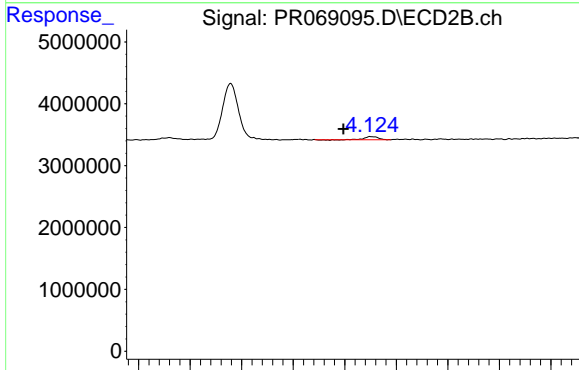




#3 AR-1016-1

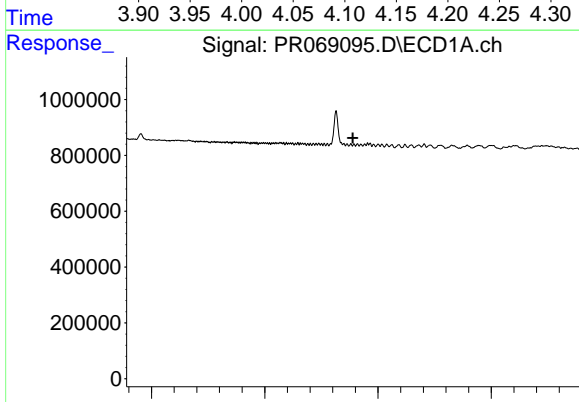
R.T.: 4.815 min
 Delta R.T.: -0.051 min
 Response: 1536721
 Conc: 52.08 ng/ml

Instrument :
 ECD_R
 ClientSampleId :
 C0CD4



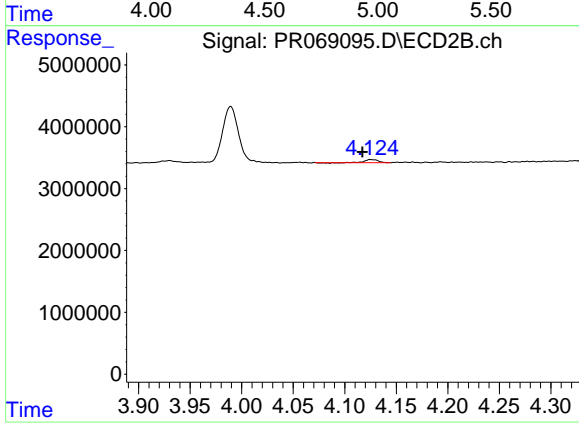
#3 AR-1016-1

R.T.: 4.126 min
 Delta R.T.: 0.028 min
 Response: 452852
 Conc: 2.44 ng/ml



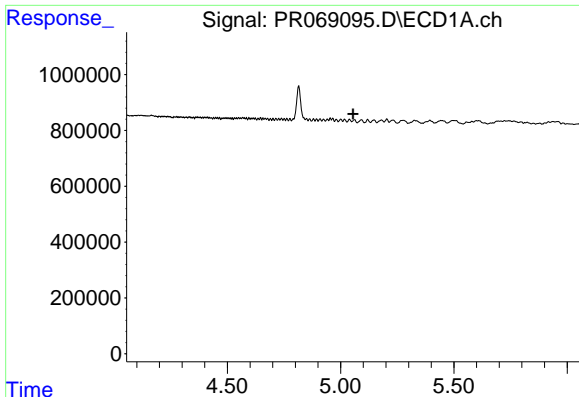
#4 AR-1016-2

R.T.: 0.000 min
 Exp R.T. : 4.888 min
 Response: 0
 Conc: N.D.



#4 AR-1016-2

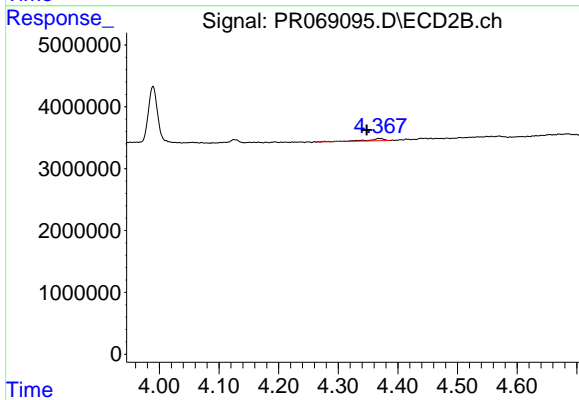
R.T.: 4.126 min
 Delta R.T.: 0.009 min
 Response: 452852
 Conc: 1.69 ng/ml



#6 AR-1016-4

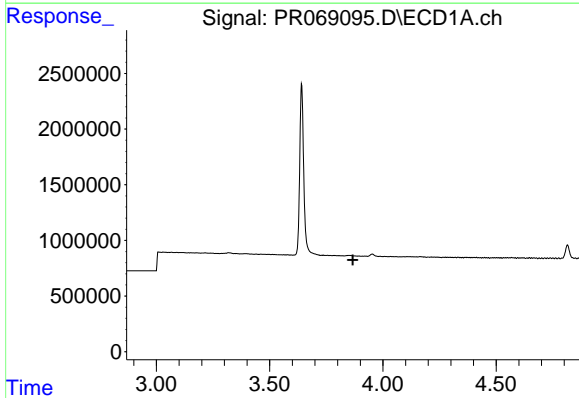
R.T.: 0.000 min
 Exp R.T. : 5.055 min
 Response: 0
 Conc: N.D.

Instrument :
 ECD_R
 ClientSampleId :
 C0CD4



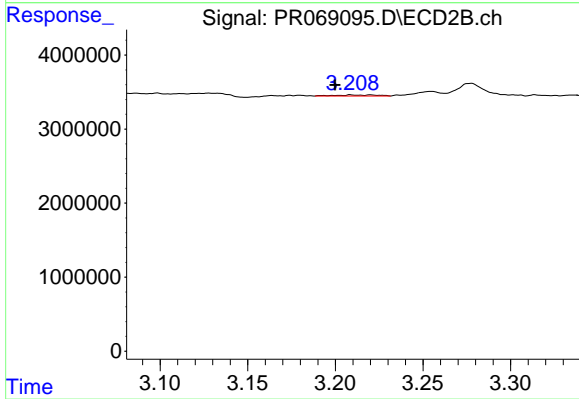
#6 AR-1016-4

R.T.: 4.369 min
 Delta R.T.: 0.021 min
 Response: 652134
 Conc: 5.53 ng/ml



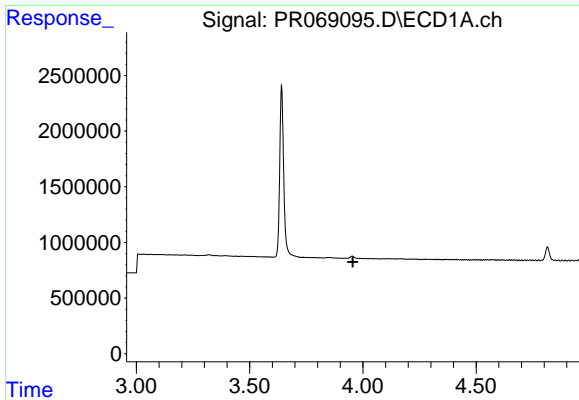
#8 AR-1221-1

R.T.: 0.000 min
 Exp R.T. : 3.867 min
 Response: 0
 Conc: N.D.



#8 AR-1221-1

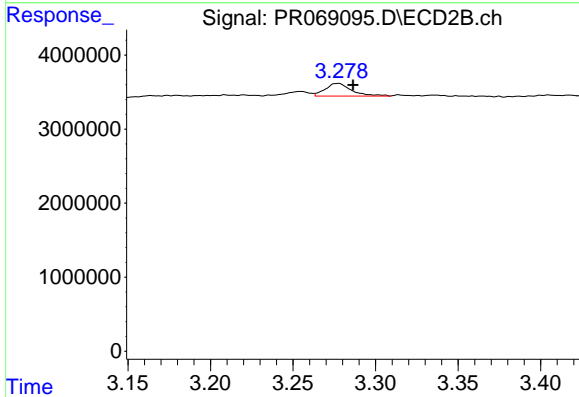
R.T.: 3.209 min
 Delta R.T.: 0.009 min
 Response: 235087
 Conc: 3.29 ng/ml



#9 AR-1221-2

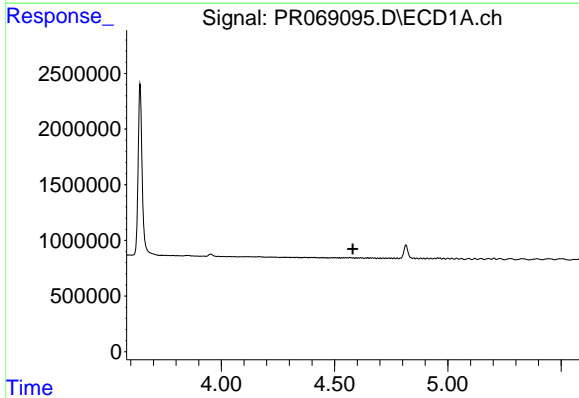
R.T.: 0.000 min
 Exp R.T. : 3.955 min
 Response: 0
 Conc: N.D.

Instrument :
 ECD_R
 ClientSampleId :
 C0CD4



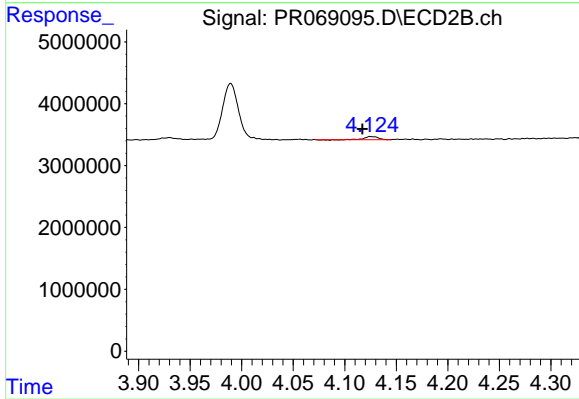
#9 AR-1221-2

R.T.: 3.277 min
 Delta R.T.: -0.009 min
 Response: 1887440
 Conc: 37.19 ng/ml



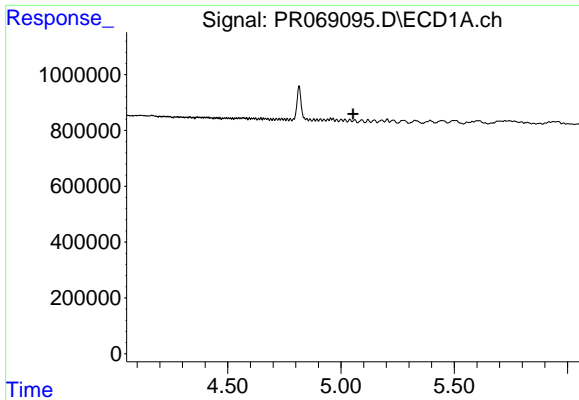
#12 AR-1232-2

R.T.: 0.000 min
 Exp R.T. : 4.580 min
 Response: 0
 Conc: N.D.



#12 AR-1232-2

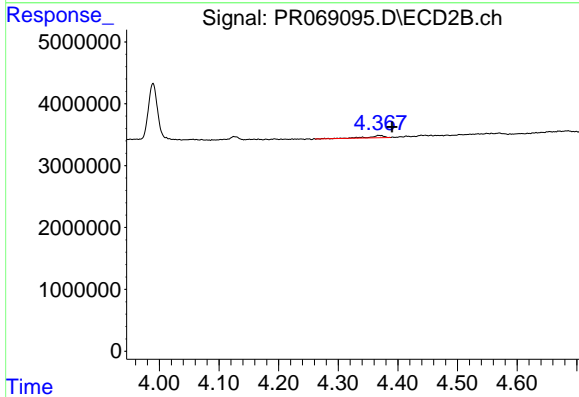
R.T.: 4.126 min
 Delta R.T.: 0.009 min
 Response: 452852
 Conc: 3.75 ng/ml



#14 AR-1232-4

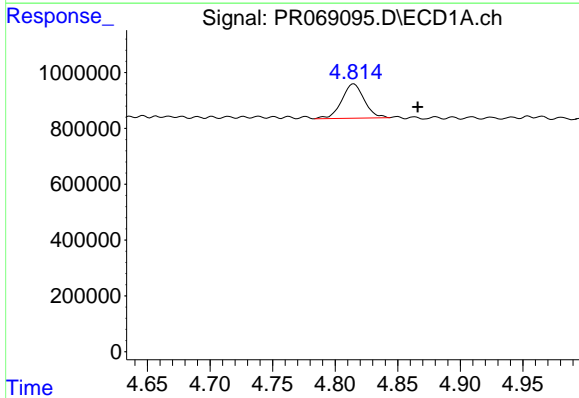
R.T.: 0.000 min
 Exp R.T.: 5.053 min
 Response: 0
 Conc: N.D.

Instrument :
 ECD_R
 ClientSampleId :
 C0CD4



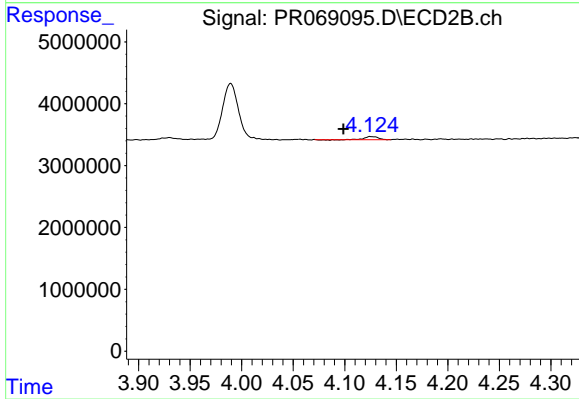
#14 AR-1232-4

R.T.: 4.369 min
 Delta R.T.: -0.021 min
 Response: 652134
 Conc: 11.86 ng/ml



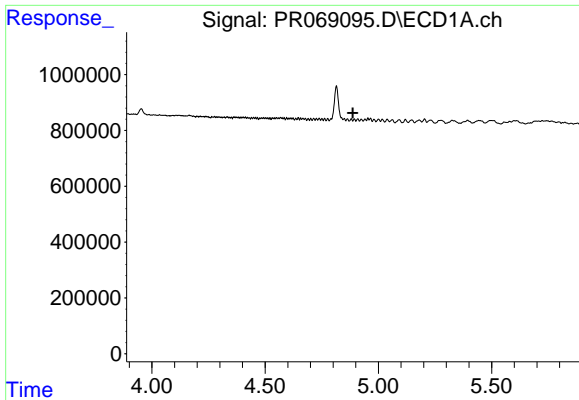
#16 AR-1242-1

R.T.: 4.815 min
 Delta R.T.: -0.051 min
 Response: 1536721
 Conc: 61.88 ng/ml



#16 AR-1242-1

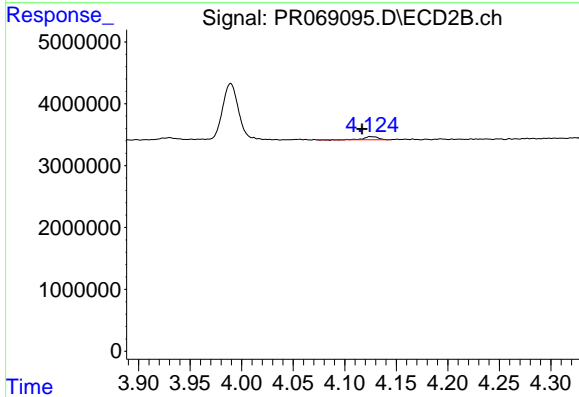
R.T.: 4.126 min
 Delta R.T.: 0.027 min
 Response: 452852
 Conc: 2.93 ng/ml



#17 AR-1242-2

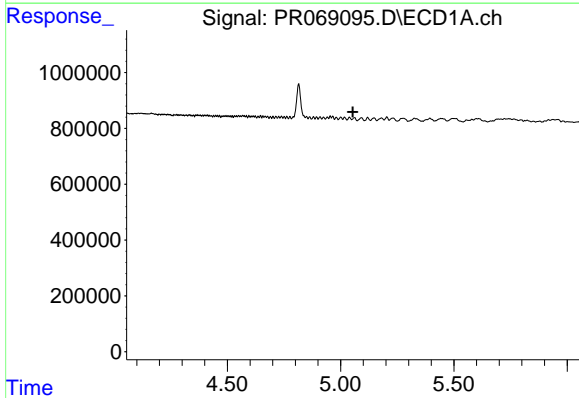
R.T.: 0.000 min
 Exp R.T.: 4.888 min
 Response: 0
 Conc: N.D.

Instrument :
 ECD_R
 ClientSampleId :
 C0CD4



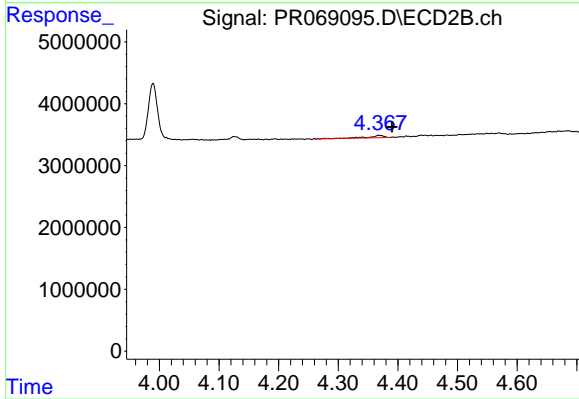
#17 AR-1242-2

R.T.: 4.126 min
 Delta R.T.: 0.010 min
 Response: 452852
 Conc: 2.04 ng/ml



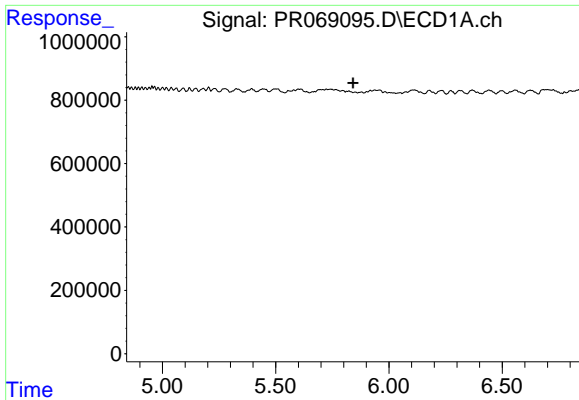
#19 AR-1242-4

R.T.: 0.000 min
 Exp R.T.: 5.054 min
 Response: 0
 Conc: N.D.



#19 AR-1242-4

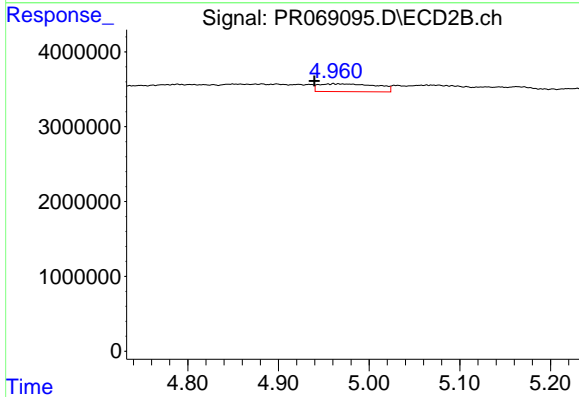
R.T.: 4.369 min
 Delta R.T.: -0.021 min
 Response: 652134
 Conc: 5.59 ng/ml



#20 AR-1242-5

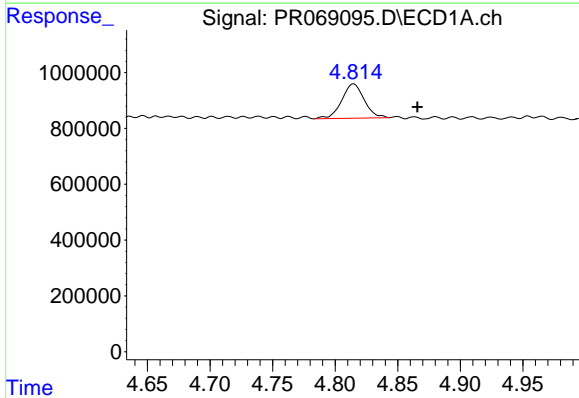
R.T.: 0.000 min
 Exp R.T.: 5.841 min
 Response: 0
 Conc: N.D.

Instrument :
 ECD_R
 ClientSampleId :
 C0CD4



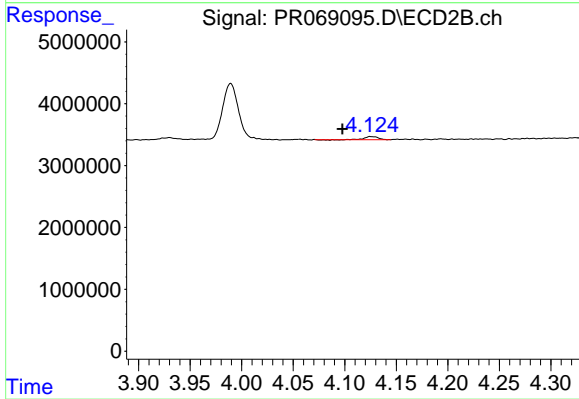
#20 AR-1242-5

R.T.: 4.962 min
 Delta R.T.: 0.022 min
 Response: 4598994
 Conc: 25.08 ng/ml



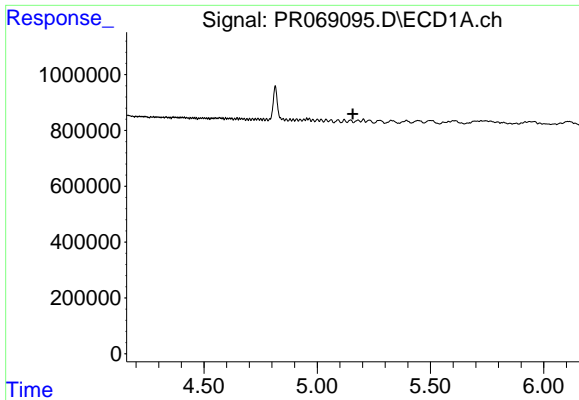
#21 AR-1248-1

R.T.: 4.815 min
 Delta R.T.: -0.051 min
 Response: 1536721
 Conc: 86.05 ng/ml



#21 AR-1248-1

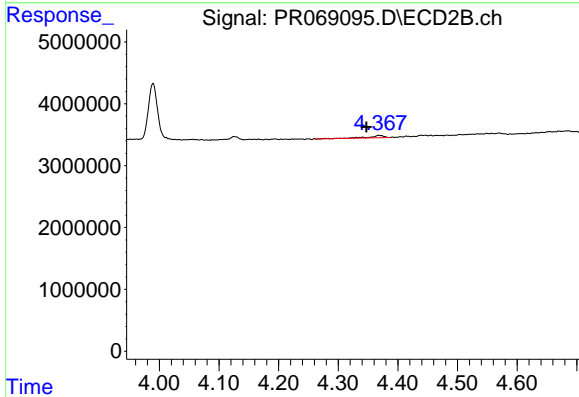
R.T.: 4.126 min
 Delta R.T.: 0.029 min
 Response: 452852
 Conc: 4.07 ng/ml



#22 AR-1248-2

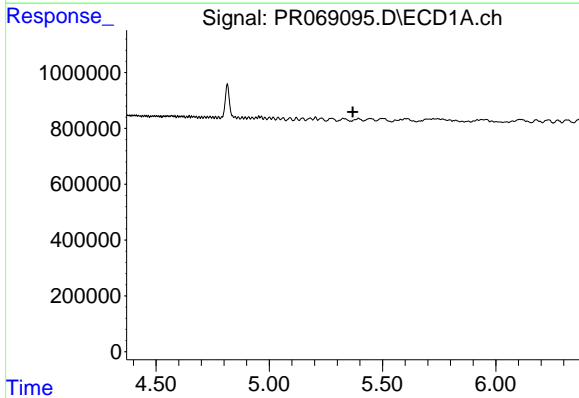
R.T.: 0.000 min
 Exp R.T.: 5.157 min
 Response: 0
 Conc: N.D.

Instrument :
 ECD_R
 ClientSampleId :
 C0CD4



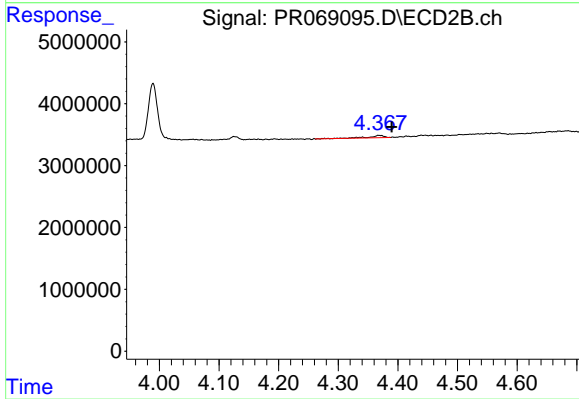
#22 AR-1248-2

R.T.: 4.369 min
 Delta R.T.: 0.022 min
 Response: 652134
 Conc: 4.10 ng/ml



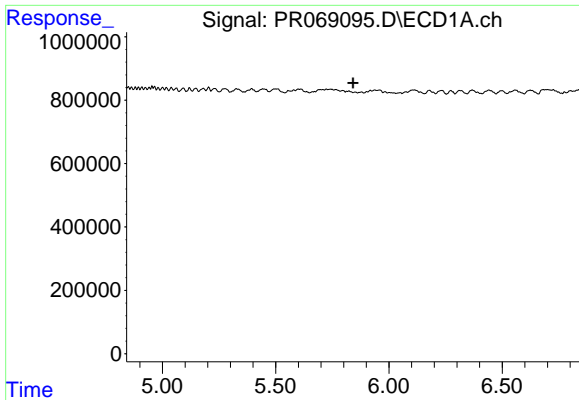
#23 AR-1248-3

R.T.: 0.000 min
 Exp R.T.: 5.368 min
 Response: 0
 Conc: N.D.



#23 AR-1248-3

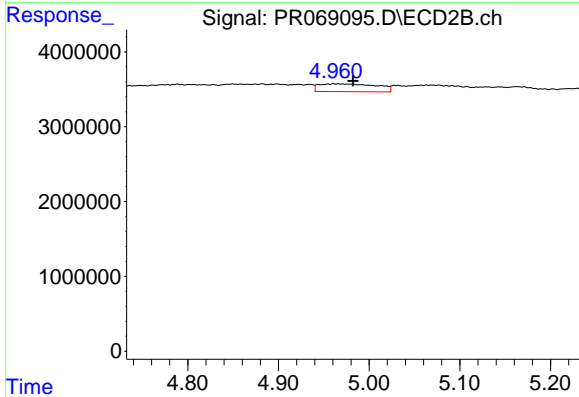
R.T.: 4.369 min
 Delta R.T.: -0.021 min
 Response: 652134
 Conc: 3.97 ng/ml



#25 AR-1248-5

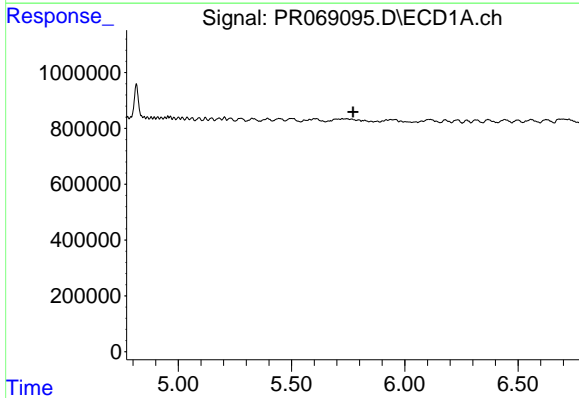
R.T.: 0.000 min
 Exp R.T.: 5.841 min
 Response: 0
 Conc: N.D.

Instrument : ECD_R
 ClientSampleId : C0CD4



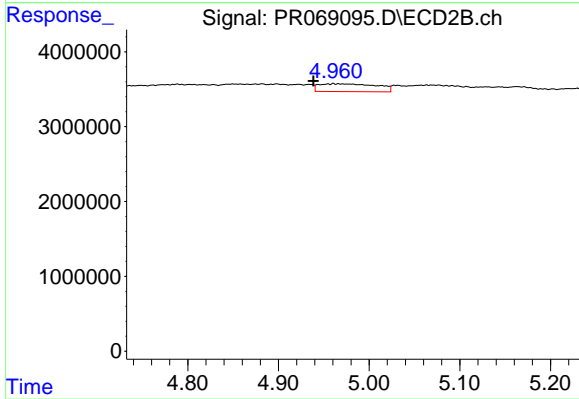
#25 AR-1248-5

R.T.: 4.962 min
 Delta R.T.: -0.021 min
 Response: 4598994
 Conc: 19.11 ng/ml



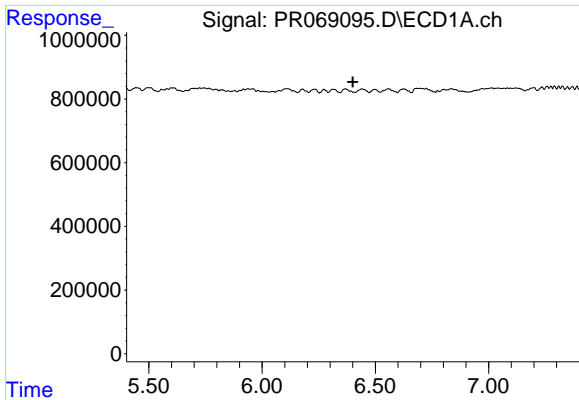
#26 AR-1254-1

R.T.: 0.000 min
 Exp R.T.: 5.771 min
 Response: 0
 Conc: N.D.



#26 AR-1254-1

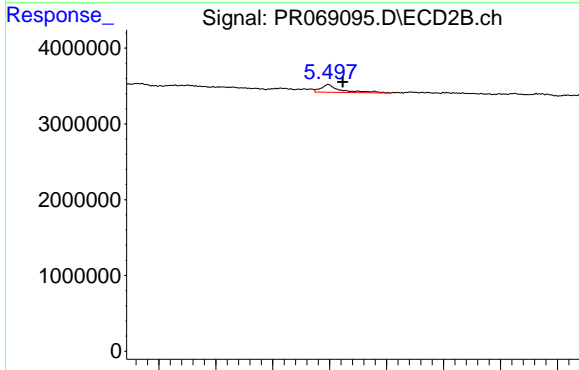
R.T.: 4.962 min
 Delta R.T.: 0.023 min
 Response: 4598994
 Conc: 12.91 ng/ml



#28 AR-1254-3

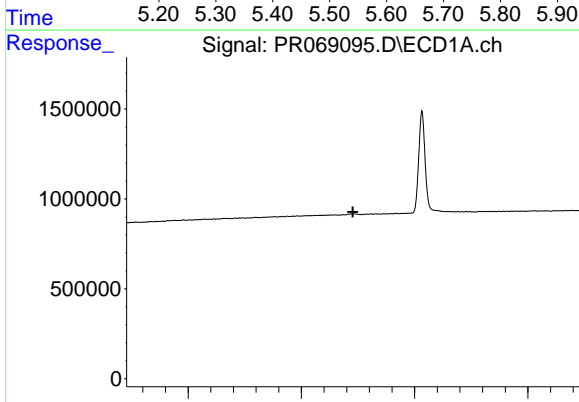
R.T.: 0.000 min
 Exp R.T.: 6.400 min
 Response: 0
 Conc: N.D.

Instrument :
 ECD_R
 ClientSampleId :
 C0CD4



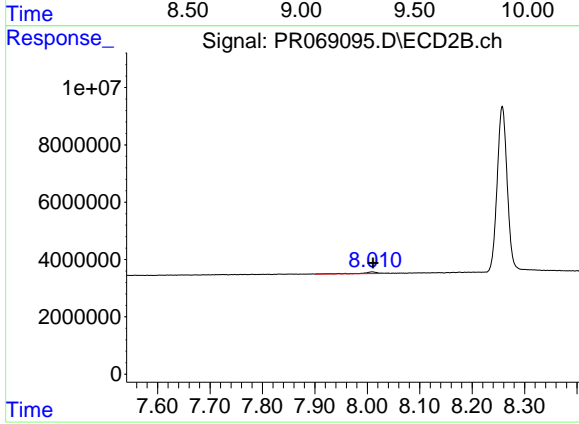
#28 AR-1254-3

R.T.: 5.497 min
 Delta R.T.: -0.026 min
 Response: 2473131
 Conc: 5.92 ng/ml



#45 AR-1268-5

R.T.: 0.000 min
 Exp R.T.: 9.227 min
 Response: 0
 Conc: N.D.



#45 AR-1268-5

R.T.: 8.009 min
 Delta R.T.: -0.002 min
 Response: 1079757
 Conc: 0.67 ng/ml