

Data Path : Z:\pestpcbsrv\HPCHEM1\ECD_R\Data\PR111124\
 Data File : PR069111.D
 Signal(s) : Signal #1: ECD1A.ch Signal #2: ECD2B.ch
 Acq On : 11 Nov 2024 18:00
 Operator : AJ\MA
 Sample : P4724-02MS
 Misc :
 ALS Vial : 34 Sample Multiplier: 1

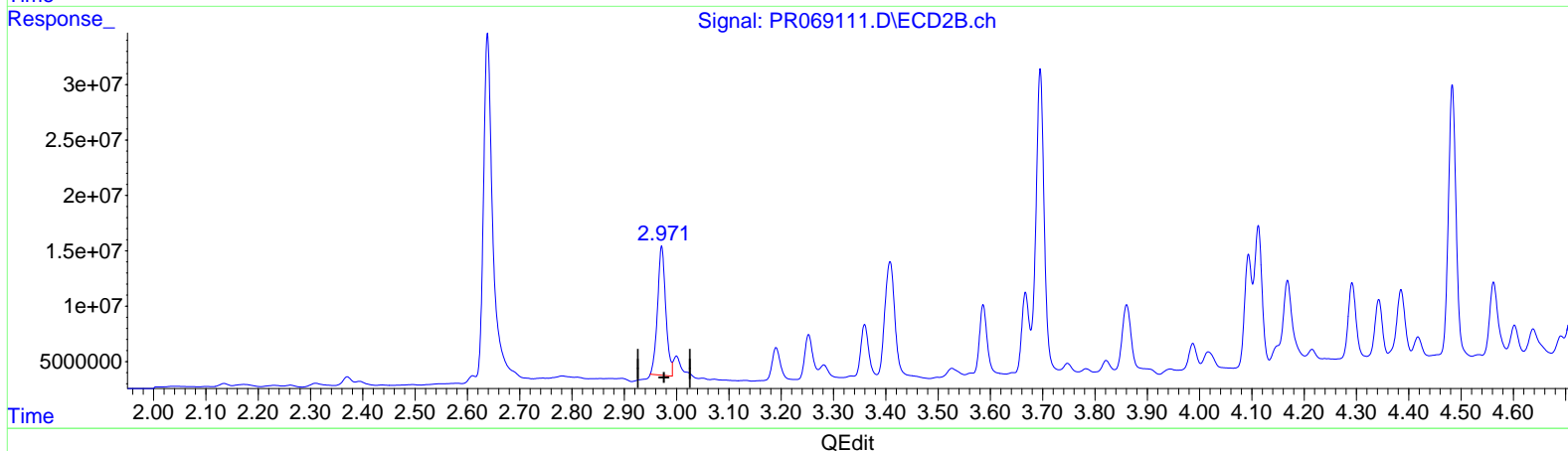
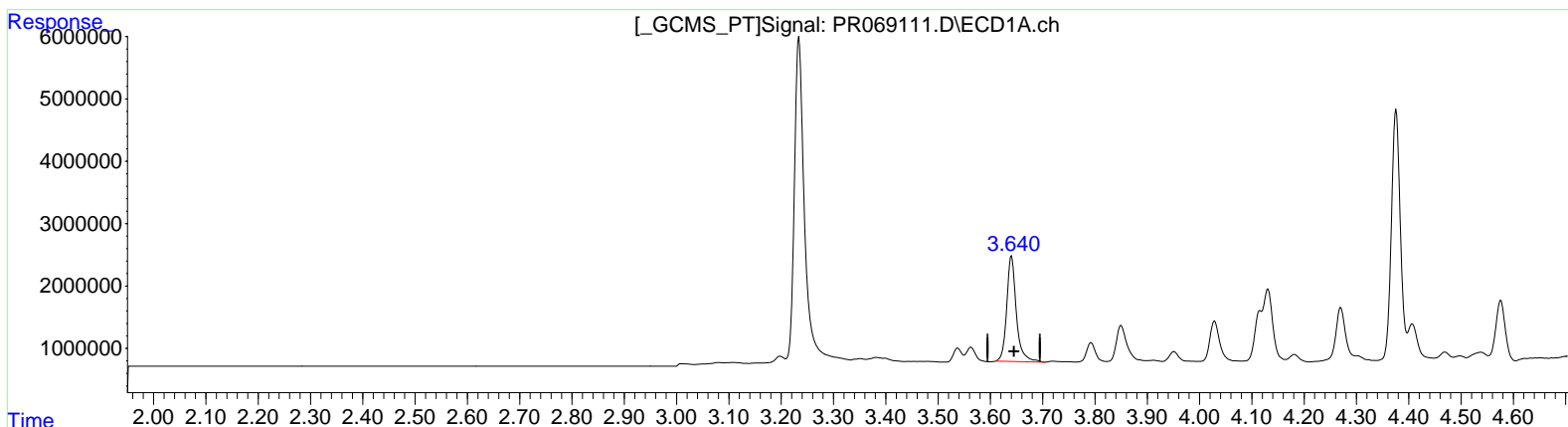
Instrument :
 ECD_R
ClientSampleId :
 BH9B8MS

Manual IntegrationsAPPROVED

Reviewed By :Yogesh Patel 11/12/2024
 Supervised By :Ankita Jodhani 11/12/2024

Integration File signal 1: autoint1.e
 Integration File signal 2: autoint2.e
 Quant Time: Nov 11 23:39:12 2024
 Quant Method : Z:\pestpcbsrv\HPCHEM1\ECD_R\Method\PR102924CLP.M
 Quant Title : GC EXTRACTABLES
 QLast Update : Tue Oct 29 14:51:31 2024
 Response via : Initial Calibration
 Integrator: ChemStation

Volume Inj. : 1 µl
 Signal #1 Phase : ZB MR1 Signal #2 Phase: ZB MR2
 Signal #1 Info : 30Mx0.32mmx 0.5µm Signal #2 Info : 30M x 0.32mm x 0.25µm



(1) Tetrachloro-m-xylene (SA)
 3.640min 21.630 ng/ml
 response 21503447

(1) Tetrachloro-m-xylene #2 (SA)
 2.972min 21.181 ng/ml
 response 127087290

Data Path : Z:\pestpcbsrv\HPCHEM1\ECD_R\Data\PR111124\
 Data File : PR069111.D
 Signal(s) : Signal #1: ECD1A.ch Signal #2: ECD2B.ch
 Acq On : 11 Nov 2024 18:00
 Operator : AJ\MA
 Sample : P4724-02MS
 Misc :
 ALS Vial : 34 Sample Multiplier: 1

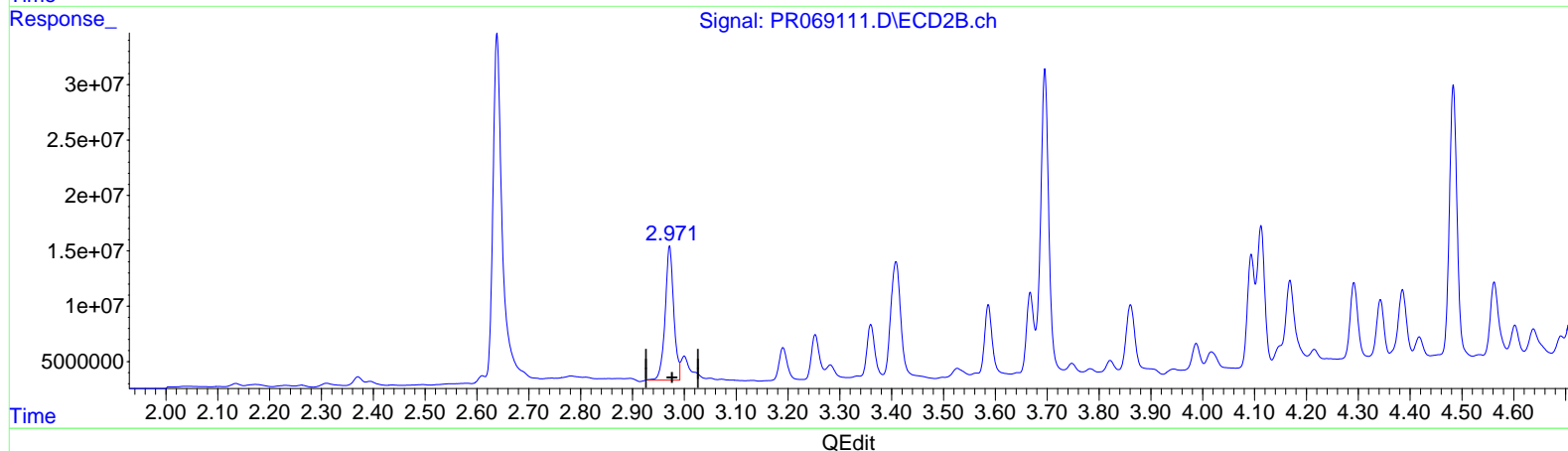
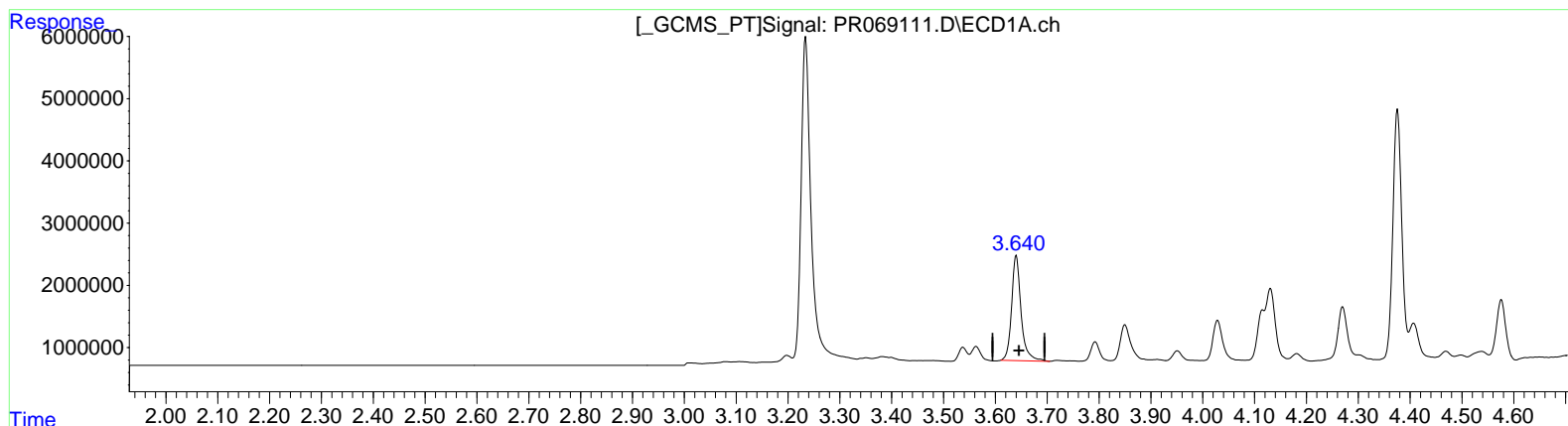
Instrument :
 ECD_R
 ClientSampleId :
 BH9B8MS

Manual Integrations APPROVED

Reviewed By :Yogesh Patel 11/12/2024
 Supervised By :Ankita Jodhani 11/12/2024

Integration File signal 1: autoint1.e
 Integration File signal 2: autoint2.e
 Quant Time: Nov 11 23:39:12 2024
 Quant Method : Z:\pestpcbsrv\HPCHEM1\ECD_R\Method\PR102924CLP.M
 Quant Title : GC EXTRACTABLES
 QLast Update : Tue Oct 29 14:51:31 2024
 Response via : Initial Calibration
 Integrator: ChemStation

Volume Inj. : 1 µl
 Signal #1 Phase : ZB MR1 Signal #2 Phase: ZB MR2
 Signal #1 Info : 30Mx0.32mmx 0.5µm Signal #2 Info : 30M x 0.32mm x 0.25µm



(1) Tetrachloro-m-xylene (SA)
 3.640min 21.630 ng/ml
 response 21503447

(1) Tetrachloro-m-xylene #2 (SA)
 2.971min 23.263 ng/ml m
 response 139583833

Data Path : Z:\pestpcbsrv\HPCHEM1\ECD_R\Data\PR111124\
 Data File : PR069111.D
 Signal(s) : Signal #1: ECD1A.ch Signal #2: ECD2B.ch
 Acq On : 11 Nov 2024 18:00
 Operator : AJ\MA
 Sample : P4724-02MS
 Misc :
 ALS Vial : 34 Sample Multiplier: 1

Instrument :

ECD_R

ClientSampleId :

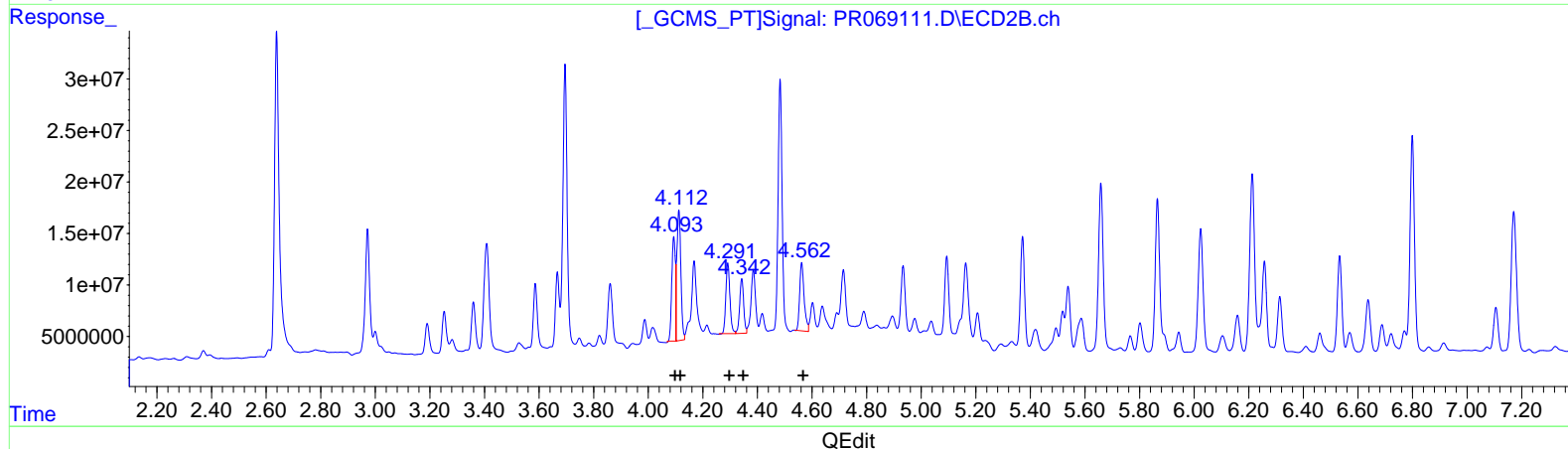
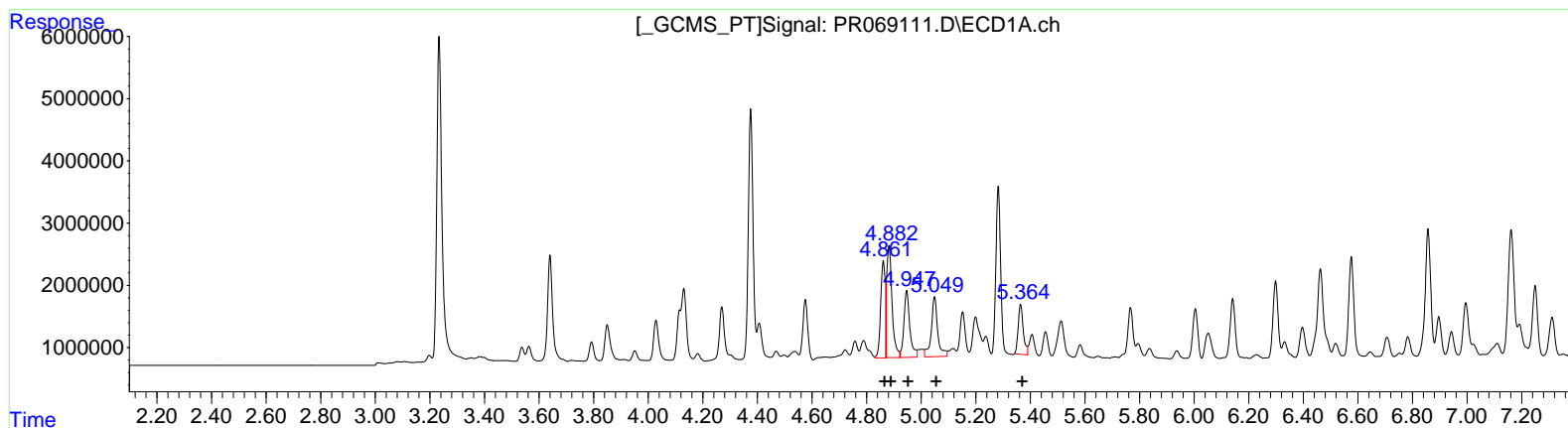
BH9B8MS

Manual IntegrationsAPPROVED

Reviewed By :Yogesh Patel 11/12/2024
 Supervised By :Ankita Jodhani 11/12/2024

Integration File signal 1: autoint1.e
 Integration File signal 2: autoint2.e
 Quant Time: Nov 11 23:39:12 2024
 Quant Method : Z:\pestpcbsrv\HPCHEM1\ECD_R\Method\PR102924CLP.M
 Quant Title : GC EXTRACTABLES
 QLast Update : Tue Oct 29 14:51:31 2024
 Response via : Initial Calibration
 Integrator: ChemStation

Volume Inj. : 1 µl
 Signal #1 Phase : ZB MR1 Signal #2 Phase: ZB MR2
 Signal #1 Info : 30Mx0.32mmx 0.5µm Signal #2 Info : 30M x 0.32mm x 0.25µm



(3) AR-1016-1 (L1)

R.T.	Response	Conc
4.86	17763412	602.01
4.88	25226094	548.38
4.95	16100851	547.14
5.05	15767222	680.11
5.36	10384072	446.20

(3) AR-1016-1 #2 (L1)

R.T.	Response	Conc
4.09	93733584	505.87
4.11	129848884	485.48
4.29	72162865	501.48
4.34	54035268	458.27
4.56	75182633	466.39

Data Path : Z:\pestpcbsrv\HPCHEM1\ECD_R\Data\PR111124\
 Data File : PR069111.D
 Signal(s) : Signal #1: ECD1A.ch Signal #2: ECD2B.ch
 Acq On : 11 Nov 2024 18:00
 Operator : AJ\MA
 Sample : P4724-02MS
 Misc :
 ALS Vial : 34 Sample Multiplier: 1

Instrument :

ECD_R

ClientSampleId :

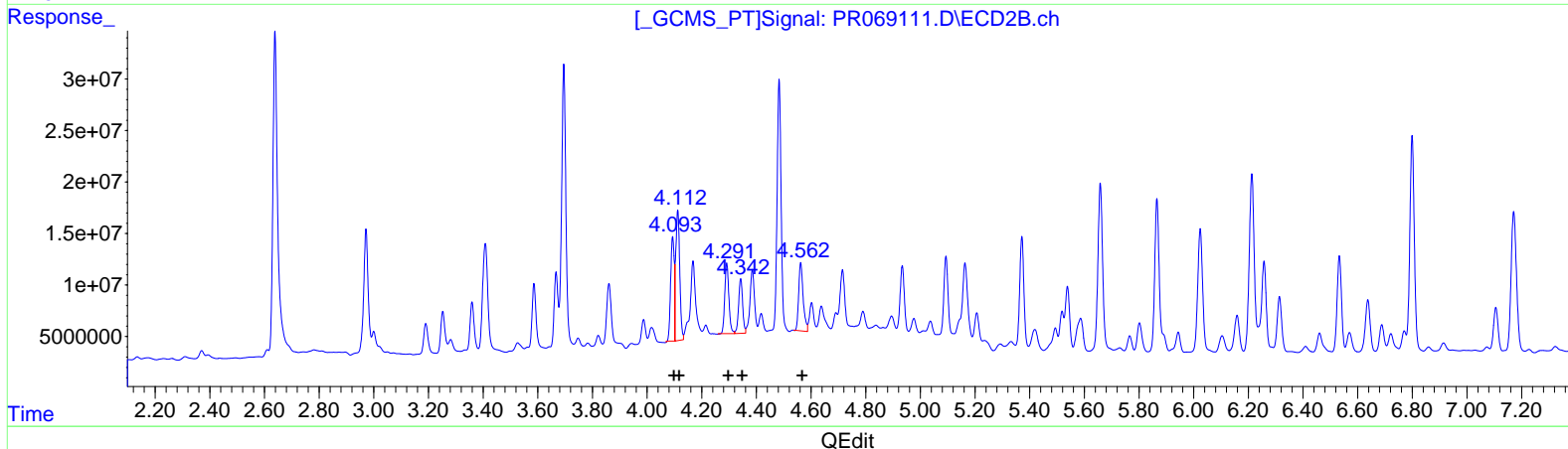
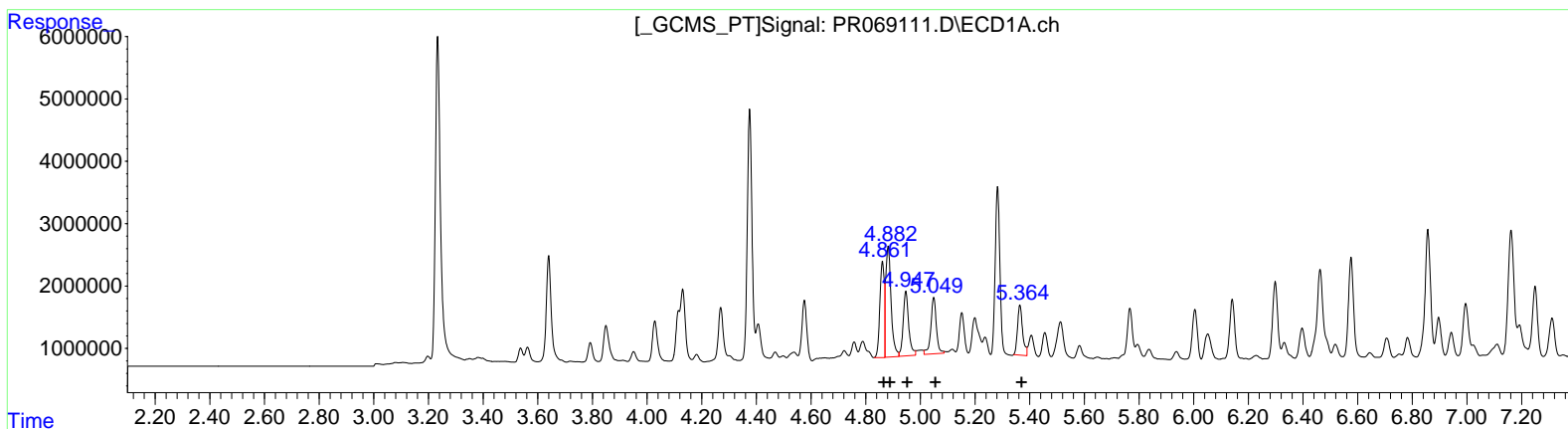
BH9B8MS

Manual IntegrationsAPPROVED

Reviewed By :Yogesh Patel 11/12/2024
 Supervised By :Ankita Jodhani 11/12/2024

Integration File signal 1: autoint1.e
 Integration File signal 2: autoint2.e
 Quant Time: Nov 11 23:39:12 2024
 Quant Method : Z:\pestpcbsrv\HPCHEM1\ECD_R\Method\PR102924CLP.M
 Quant Title : GC EXTRACTABLES
 QLast Update : Tue Oct 29 14:51:31 2024
 Response via : Initial Calibration
 Integrator: ChemStation

Volume Inj. : 1 µl
 Signal #1 Phase : ZB MR1 Signal #2 Phase: ZB MR2
 Signal #1 Info : 30Mx0.32mmx 0.5µm Signal #2 Info : 30M x 0.32mm x 0.25µm



(3) AR-1016-1 (L1)

R.T.	Response	Conc
4.86	16191033	548.72
4.88	23953401	520.71
4.95	14380939	488.69
5.05	12639966	545.22
5.36	10384072	446.20

(3) AR-1016-1 #2 (L1)

R.T.	Response	Conc
4.09	93733584	505.87
4.11	129848884	485.48
4.29	72162865	501.48
4.34	54035268	458.27
4.56	75182633	466.39