

Data Path : Z:\pestpcbsrv\HPCHEM1\ECD_R\Data\PR111318\
 Data File : PR033715.D
 Signal(s) : Signal #1: ECD1A.ch Signal #2: ECD2B.ch
 Acq On : 13 Nov 2018 16:10
 Operator : SM\SJ
 Sample : AR1221CCC500
 Misc :
 ALS Vial : 20 Sample Multiplier: 1

Instrument :
 ECD_R
 ClientSampleId :
 AR1221CCC500

Integration File signal 1: autoint1.e
 Integration File signal 2: autoint2.e
 Quant Time: Nov 13 16:27:36 2018
 Quant Method : Z:\pestpcbsrv\HPCHEM1\ECD_R\Method\PR111318.M
 Quant Title : GC EXTRACTABLES
 QLast Update : Tue Nov 13 13:12:48 2018
 Response via : Initial Calibration
 Integrator: ChemStation

Volume Inj. : 2 µl
 Signal #1 Phase : ZB-MR1 Signal #2 Phase: ZB-MR2
 Signal #1 Info : 30Mx0.32mmx 0.50µ Signal #2 Info : 30M x 0.32mm x 0.25µm

Compound	RT#1	RT#2	Resp#1	Resp#2	ng/ml	ng/ml

System Monitoring Compounds						
1) SA Tetrachlo...	4.958	3.706	64321829	121.1E6	45.131	44.605
2) SA Decachlor...	10.985	8.682	77603581	129.9E6	47.111	46.732
Target Compounds						
8) L2 AR-1221-1	5.163	3.917	8043065	13411273	451.730	431.750
9) L2 AR-1221-2	5.250	4.002	6304738	10321674	456.047	481.791
10) L2 AR-1221-3	5.328	4.078	18593860	31658129	446.238	463.469

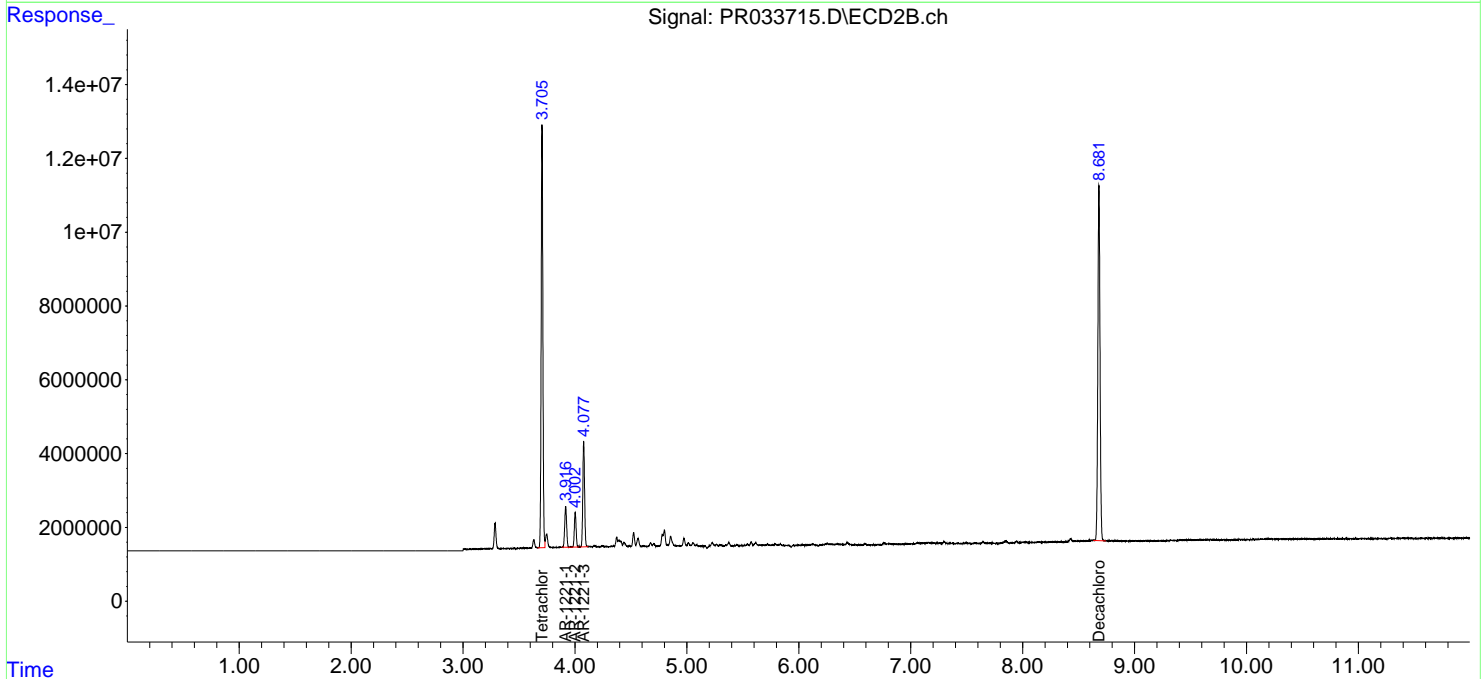
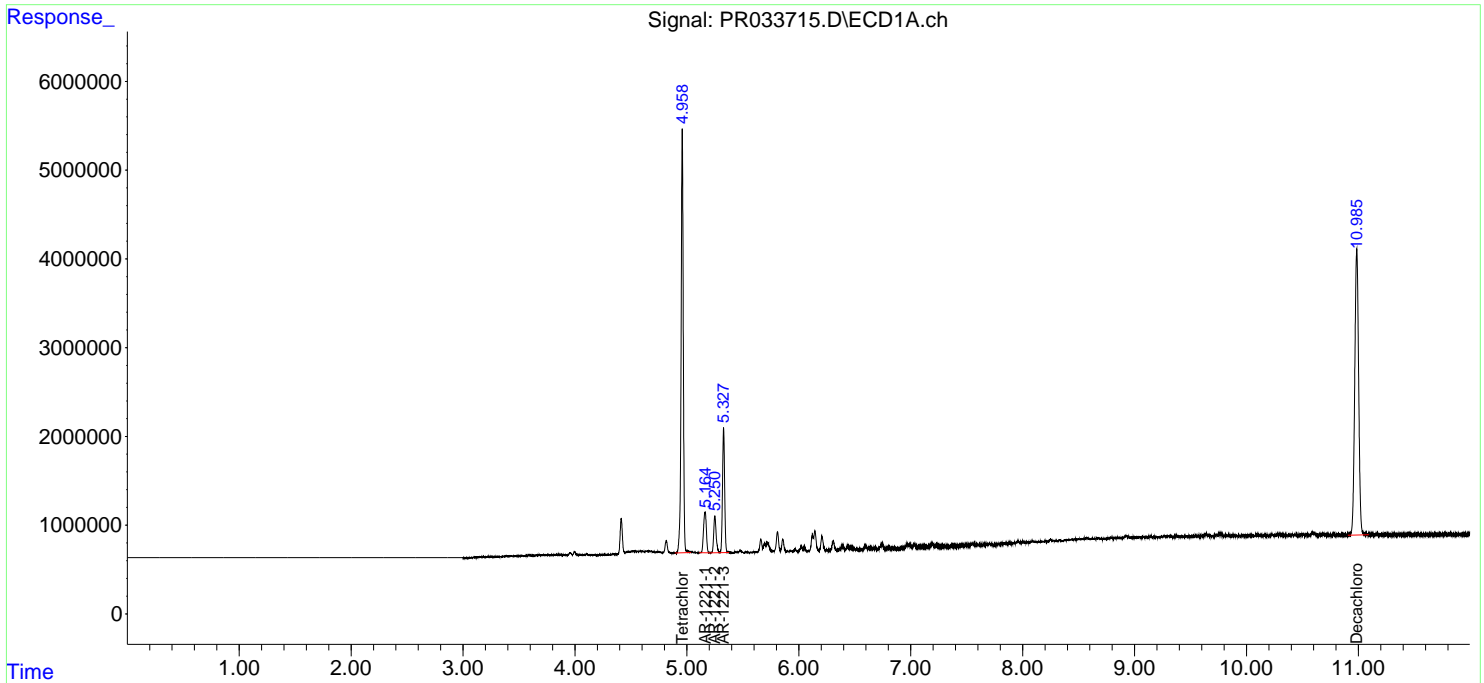
(f)=RT Delta > 1/2 Window (#)=Amounts differ by > 25% (m)=manual int.

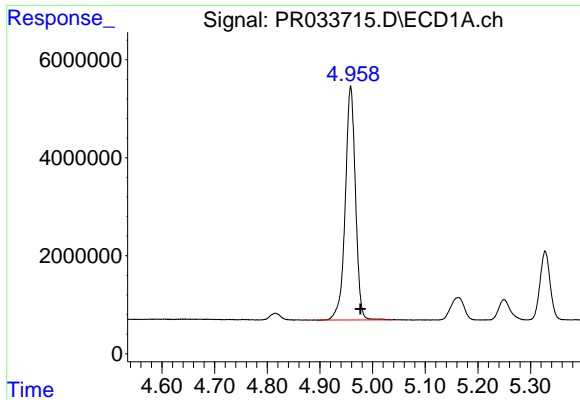
Data Path : Z:\pestpcbsrv\HPCHEM1\ECD_R\Data\PR111318\
 Data File : PR033715.D
 Signal(s) : Signal #1: ECD1A.ch Signal #2: ECD2B.ch
 Acq On : 13 Nov 2018 16:10
 Operator : SM\SJ
 Sample : AR1221CCC500
 Misc :
 ALS Vial : 20 Sample Multiplier: 1

Instrument :
 ECD_R
 ClientSampled :
 AR1221CCC500

Integration File signal 1: autoint1.e
 Integration File signal 2: autoint2.e
 Quant Time: Nov 13 16:27:36 2018
 Quant Method : Z:\pestpcbsrv\HPCHEM1\ECD_R\Method\PR111318.M
 Quant Title : GC EXTRACTABLES
 QLast Update : Tue Nov 13 13:12:48 2018
 Response via : Initial Calibration
 Integrator: ChemStation

Volume Inj. : 2 µl
 Signal #1 Phase : ZB-MR1 Signal #2 Phase: ZB-MR2
 Signal #1 Info : 30Mx0.32mmx 0.50µ Signal #2 Info : 30M x 0.32mm x 0.25µm

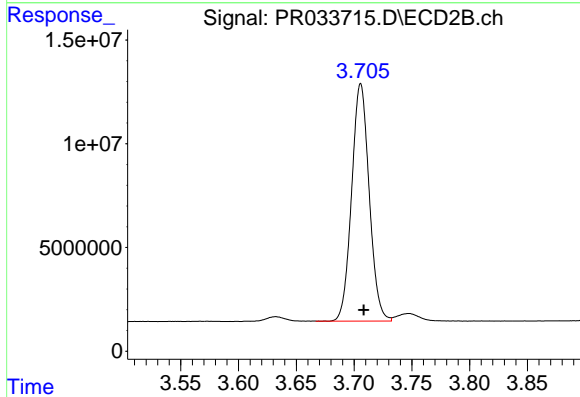




#1 Tetrachloro-m-xylene

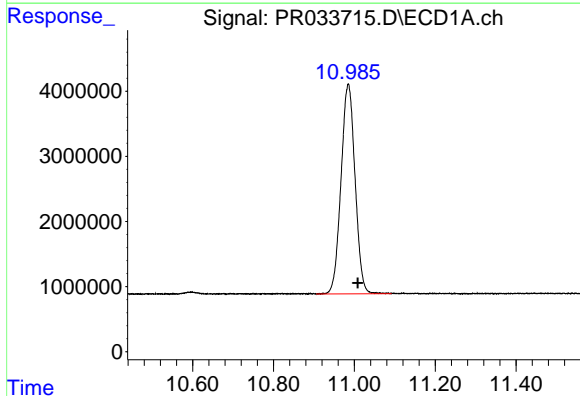
R.T.: 4.958 min
 Delta R.T.: -0.019 min
 Response: 64321829
 Conc: 45.13 ng/ml

Instrument :
 ECD_R
 ClientSampleId :
 AR1221CCC500



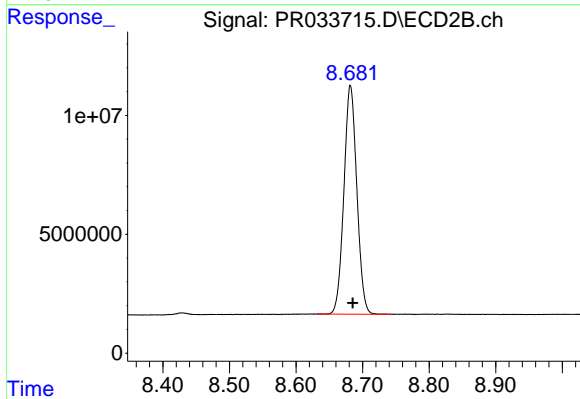
#1 Tetrachloro-m-xylene

R.T.: 3.706 min
 Delta R.T.: -0.003 min
 Response: 121132995
 Conc: 44.60 ng/ml



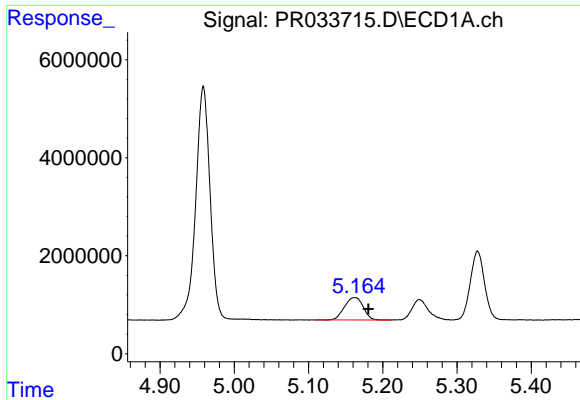
#2 Decachlorobiphenyl

R.T.: 10.985 min
 Delta R.T.: -0.023 min
 Response: 77603581
 Conc: 47.11 ng/ml



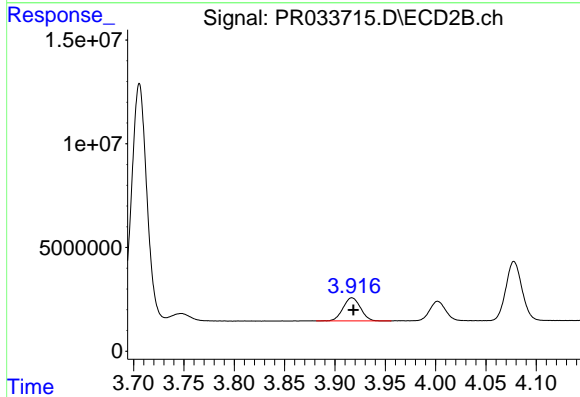
#2 Decachlorobiphenyl

R.T.: 8.682 min
 Delta R.T.: -0.003 min
 Response: 129914194
 Conc: 46.73 ng/ml

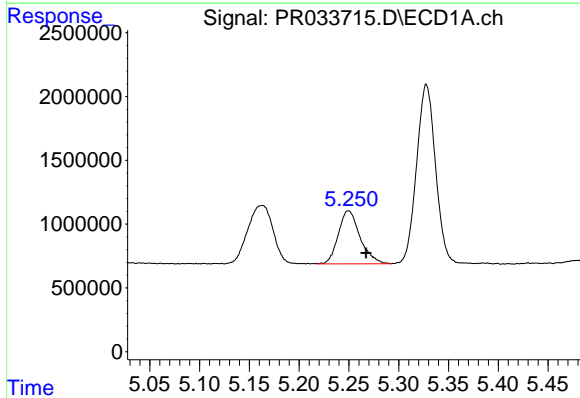


#8 AR-1221-1
 R.T.: 5.163 min
 Delta R.T.: -0.018 min
 Response: 8043065
 Conc: 451.73 ng/ml

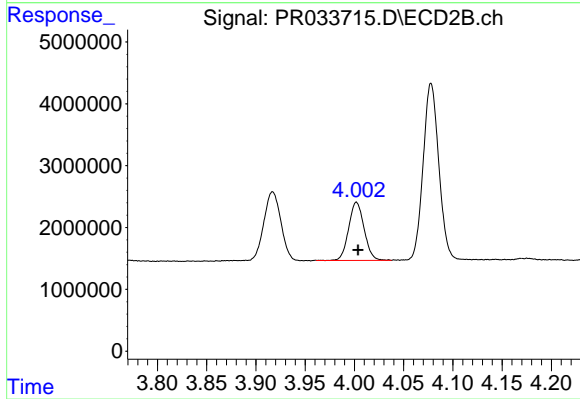
Instrument :
 ECD_R
ClientSampleId :
 AR1221CCC500



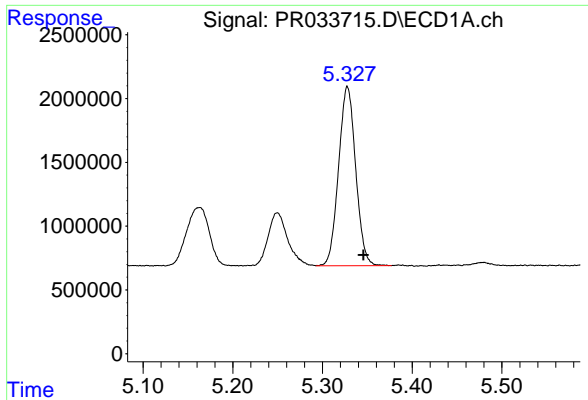
#8 AR-1221-1
 R.T.: 3.917 min
 Delta R.T.: -0.002 min
 Response: 13411273
 Conc: 431.75 ng/ml



#9 AR-1221-2
 R.T.: 5.250 min
 Delta R.T.: -0.018 min
 Response: 6304738
 Conc: 456.05 ng/ml



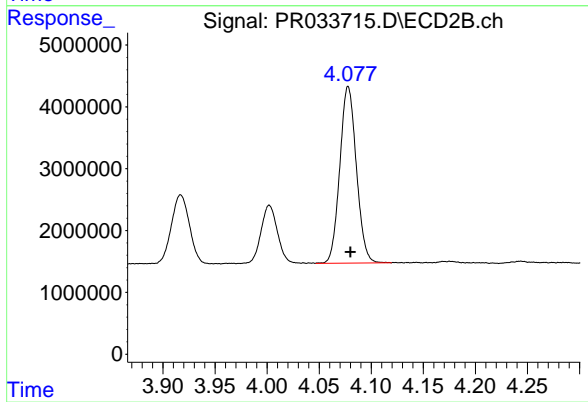
#9 AR-1221-2
 R.T.: 4.002 min
 Delta R.T.: -0.002 min
 Response: 10321674
 Conc: 481.79 ng/ml



#10 AR-1221-3

R.T.: 5.328 min
Delta R.T.: -0.018 min
Response: 18593860
Conc: 446.24 ng/ml

Instrument :
ECD_R
ClientSampleId :
AR1221CCC500



#10 AR-1221-3

R.T.: 4.078 min
Delta R.T.: -0.002 min
Response: 31658129
Conc: 463.47 ng/ml