

Data Path : Z:\pestpcbsrv\HPCHEM1\ECD_R\Data\PR111820\
 Data File : PR048681.D
 Signal(s) : Signal #1: ECD1A.ch Signal #2: ECD2B.ch
 Acq On : 18 Nov 2020 09:56
 Operator : DD\AJ
 Sample : L4731-05MS
 Misc :
 ALS Vial : 4 Sample Multiplier: 1

Instrument :
 ECD_R
 ClientSampled :
 TI-633MS

Manual Integrations
 APPROVED

Ankita
 11/19/2020 1:39:01 PM

Integration File signal 1: autoint1.e
 Integration File signal 2: autoint2.e
 Quant Time: Nov 18 12:08:21 2020
 Quant Method : Z:\pestpcbsrv\HPCHEM1\ECD_R\Method\PR110320.M
 Quant Title : GC EXTRACTABLES
 QLast Update : Wed Nov 04 04:25:33 2020
 Response via : Initial Calibration
 Integrator: ChemStation

Volume Inj. : 2 µl
 Signal #1 Phase : ZB-MR2 Signal #2 Phase: ZB-MR2
 Signal #1 Info : 30Mx0.32mmx 0.50µ Signal #2 Info : 30M x 0.32mm x 0.25µm

Compound	RT#1	RT#2	Resp#1	Resp#2	ng/ml	ng/ml

System Monitoring Compounds						
1) SA Tetrachlo...	4.725	3.878	79860594	95902871	32.624	33.030
2) SA Decachlor...	10.655	8.994	73487514	404.1E6	27.891	27.664
Target Compounds						
3) L1 AR-1016-1	5.904	4.967	5142219	3233730	55.035m	39.732m#
4) L1 AR-1016-2	5.925	4.987	6531385	7422781	50.041m	44.486
5) L1 AR-1016-3	5.985	5.162	4982880	4943684	62.621m	49.703m
6) L1 AR-1016-4	6.089	5.210	3512139	2114176	53.925m	47.341
7) L1 AR-1016-5	6.383	5.421	3867366	4251359	60.589m	51.692
31) L7 AR-1260-1	7.512	6.466	6134647	6833457	53.981m	35.958 #
32) L7 AR-1260-2	7.768	6.656	6197757	34176627	44.142m	52.239
33) L7 AR-1260-3	8.130	6.811	5121021	20930856	48.021m	48.996
34) L7 AR-1260-4	8.368	7.290	4353779	21616013	35.045m	42.657
35) L7 AR-1260-5	8.705	7.535	10279050	78209619	41.075m	38.426

(f)=RT Delta > 1/2 Window (#)=Amounts differ by > 25% (m)=manual int.

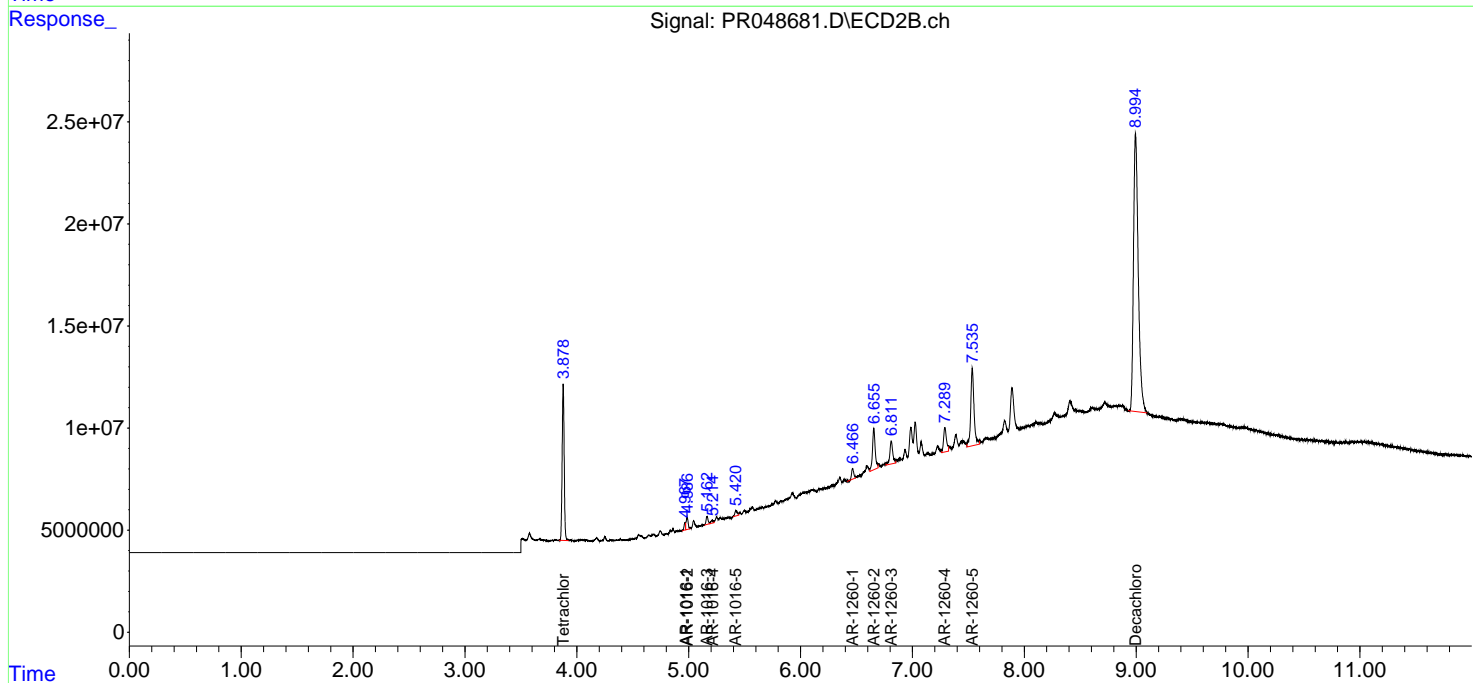
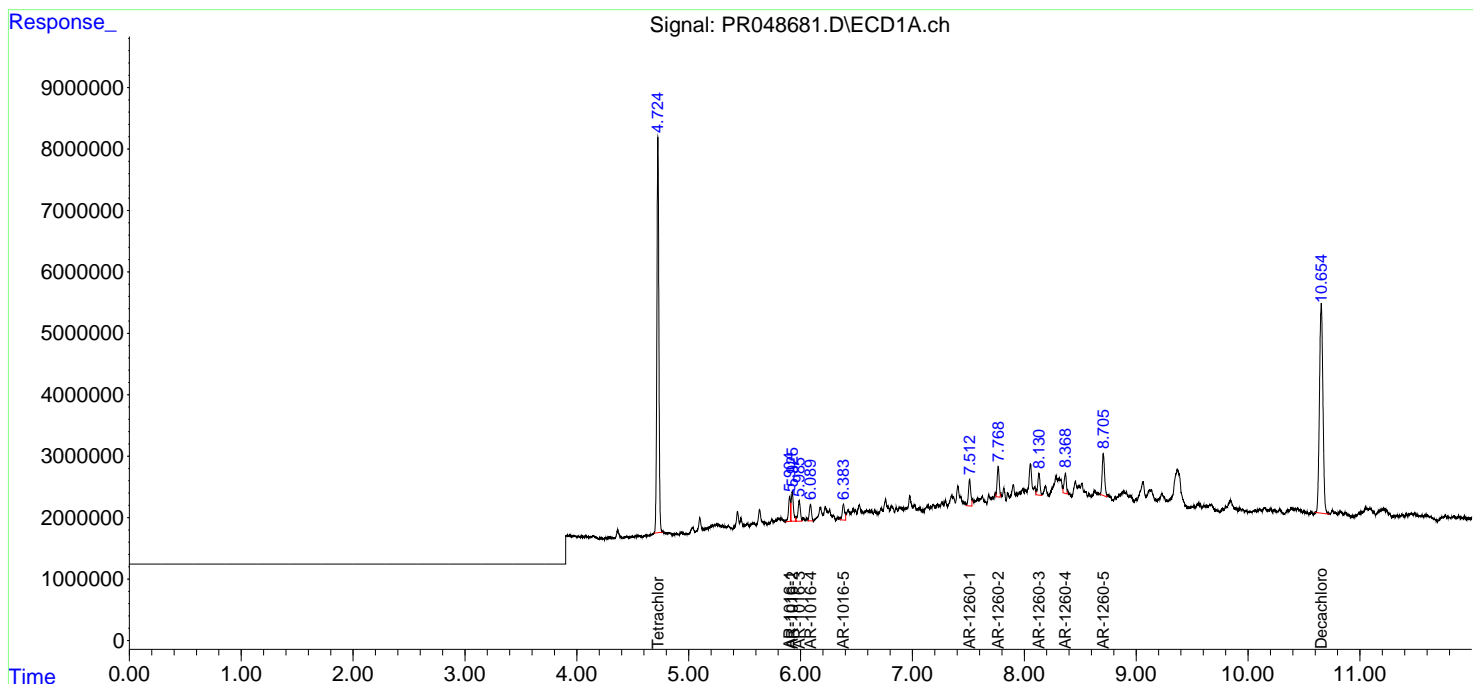
Data Path : Z:\pestpcbsrv\HPCHEM1\ECD_R\Data\PR111820\
 Data File : PR048681.D
 Signal(s) : Signal #1: ECD1A.ch Signal #2: ECD2B.ch
 Acq On : 18 Nov 2020 09:56
 Operator : DD\AJ
 Sample : L4731-05MS
 Misc :
 ALS Vial : 4 Sample Multiplier: 1

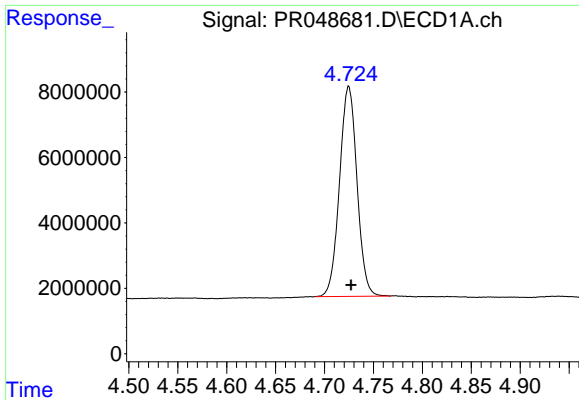
Instrument :
 ECD_R
Client Sampled :
 TI-633MS

Manual Integrations
APPROVED
 Ankita
 11/19/2020 1:39:01 PM

Integration File signal 1: autoint1.e
 Integration File signal 2: autoint2.e
 Quant Time: Nov 18 12:08:21 2020
 Quant Method : Z:\pestpcbsrv\HPCHEM1\ECD_R\Method\PR110320.M
 Quant Title : GC EXTRACTABLES
 QLast Update : Wed Nov 04 04:25:33 2020
 Response via : Initial Calibration
 Integrator: ChemStation

Volume Inj. : 2 µl
 Signal #1 Phase : ZB-MR1 Signal #2 Phase: ZB-MR2
 Signal #1 Info : 30Mx0.32mmx 0.50µ Signal #2 Info : 30M x 0.32mm x 0.25µm



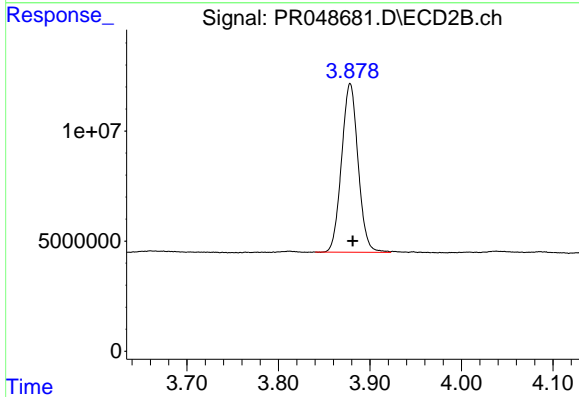


#1 Tetrachloro-m-xylene

R.T.: 4.725 min
 Delta R.T.: -0.002 min
 Response: 79860594
 Conc: 32.62 ng/ml

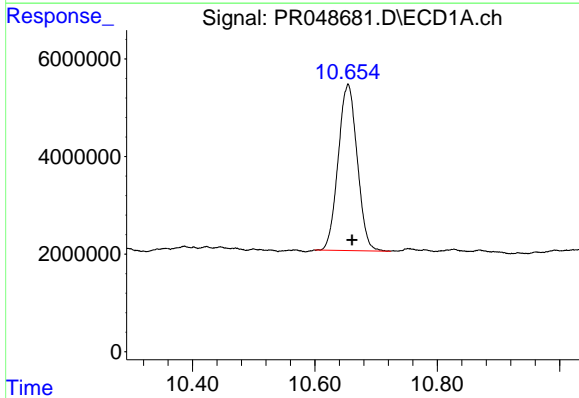
Instrument :
 ECD_R
 ClientSampled :
 TI-633MS

Manual Integrations
 APPROVED
 Ankita
 11/19/2020 1:39:01 PM



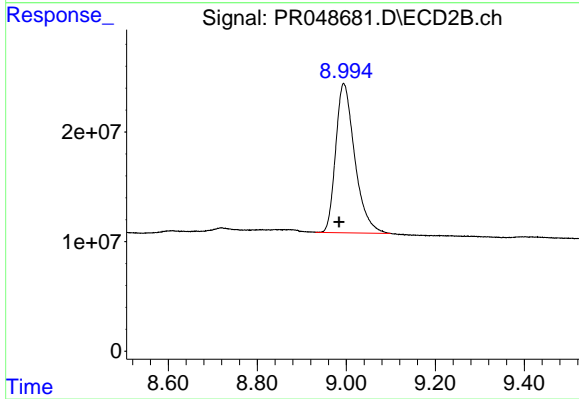
#1 Tetrachloro-m-xylene

R.T.: 3.878 min
 Delta R.T.: -0.003 min
 Response: 95902871
 Conc: 33.03 ng/ml



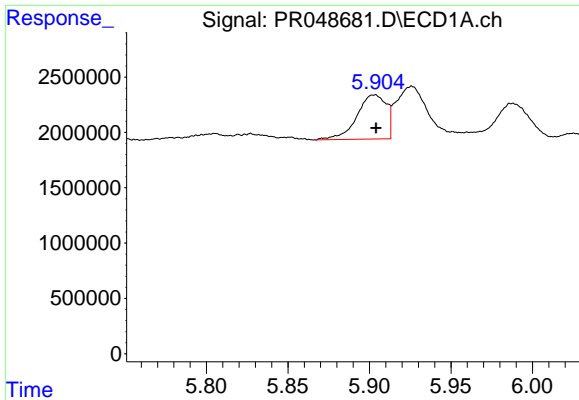
#2 Decachlorobiphenyl

R.T.: 10.655 min
 Delta R.T.: -0.006 min
 Response: 73487514
 Conc: 27.89 ng/ml



#2 Decachlorobiphenyl

R.T.: 8.994 min
 Delta R.T.: 0.010 min
 Response: 404055621
 Conc: 27.66 ng/ml

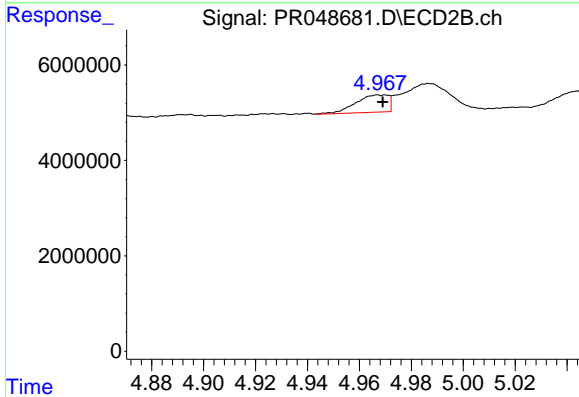


#3 AR-1016-1

R.T.: 5.904 min
 Delta R.T.: 0.000 min
 Response: 5142219
 Conc: 55.03 ng/ml m

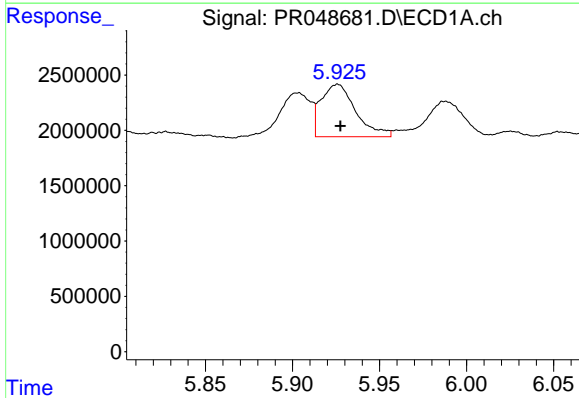
Instrument :
 ECD_R
ClientSampled :
 TI-633MS

Manual Integrations
APPROVED
 Ankita
 11/19/2020 1:39:01 PM



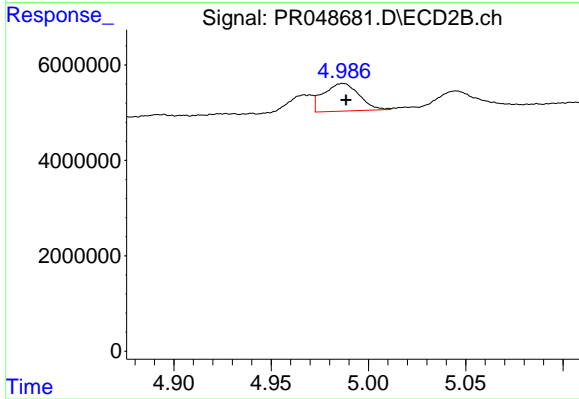
#3 AR-1016-1

R.T.: 4.967 min
 Delta R.T.: -0.002 min
 Response: 3233730
 Conc: 39.73 ng/ml m



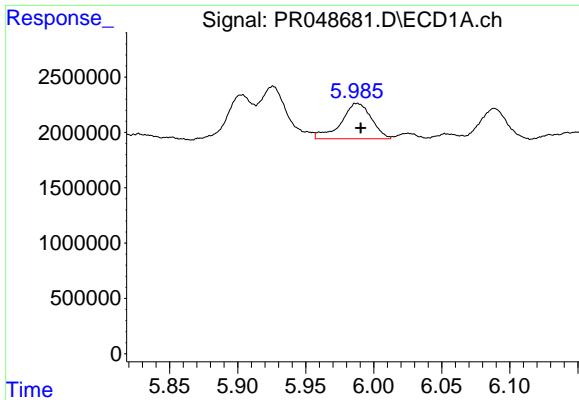
#4 AR-1016-2

R.T.: 5.925 min
 Delta R.T.: -0.002 min
 Response: 6531385
 Conc: 50.04 ng/ml m



#4 AR-1016-2

R.T.: 4.987 min
 Delta R.T.: -0.002 min
 Response: 7422781
 Conc: 44.49 ng/ml

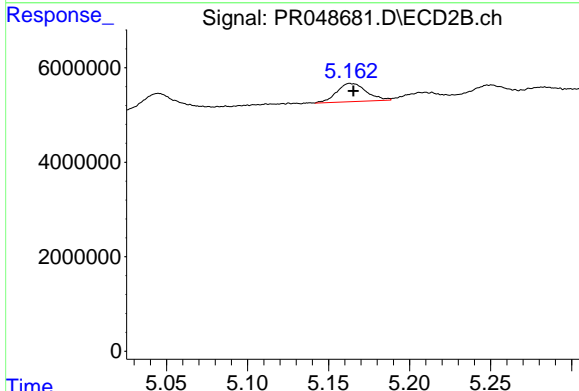


#5 AR-1016-3

R.T.: 5.985 min
 Delta R.T.: -0.005 min
 Response: 4982880
 Conc: 62.62 ng/ml m

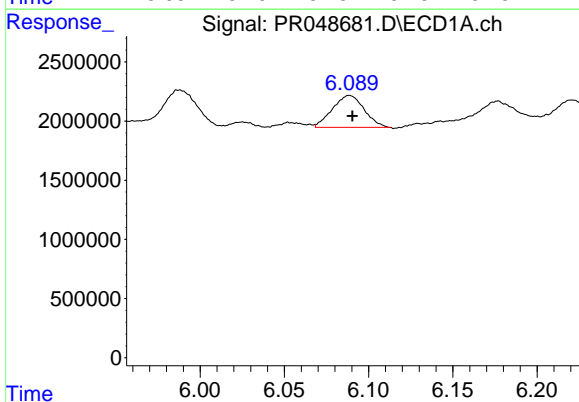
Instrument :
 ECD_R
ClientSampled :
 TI-633MS

Manual Integrations
APPROVED
 Ankita
 11/19/2020 1:39:01 PM



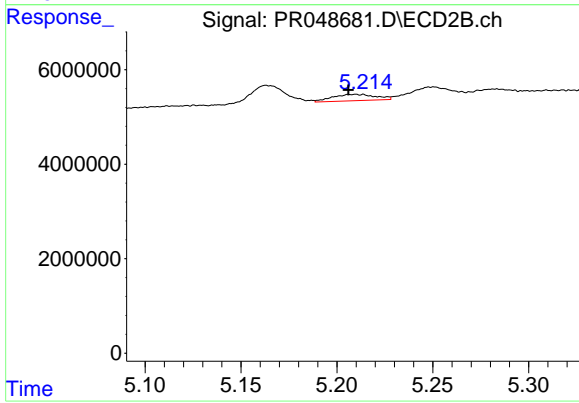
#5 AR-1016-3

R.T.: 5.162 min
 Delta R.T.: -0.003 min
 Response: 4943684
 Conc: 49.70 ng/ml m



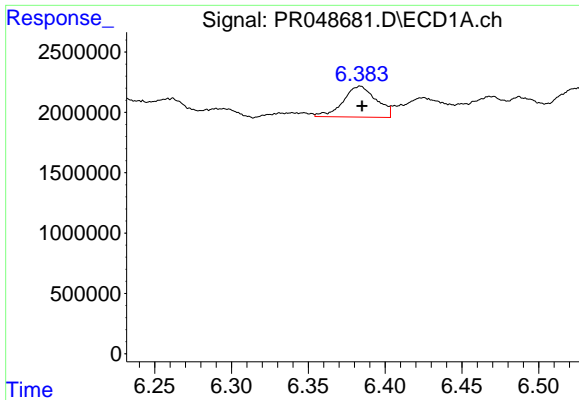
#6 AR-1016-4

R.T.: 6.089 min
 Delta R.T.: -0.002 min
 Response: 3512139
 Conc: 53.93 ng/ml m



#6 AR-1016-4

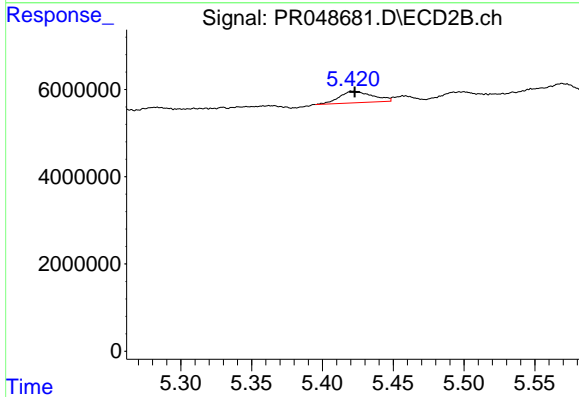
R.T.: 5.210 min
 Delta R.T.: 0.004 min
 Response: 2114176
 Conc: 47.34 ng/ml



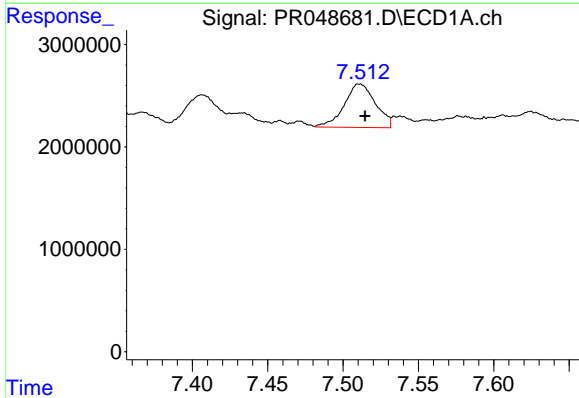
#7 AR-1016-5
 R.T.: 6.383 min
 Delta R.T.: -0.002 min
 Response: 3867366
 Conc: 60.59 ng/ml m

Instrument :
 ECD_R
ClientSampled :
 TI-633MS

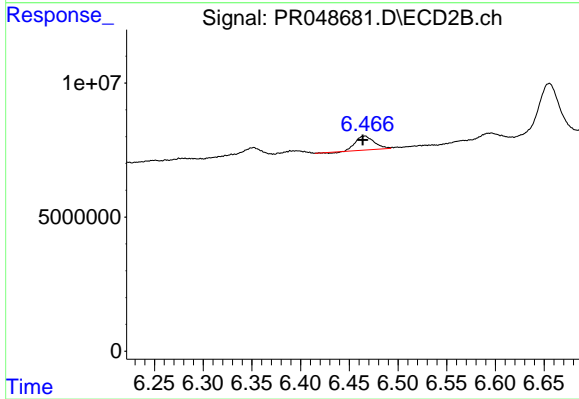
Manual Integrations
APPROVED
 Ankita
 11/19/2020 1:39:01 PM



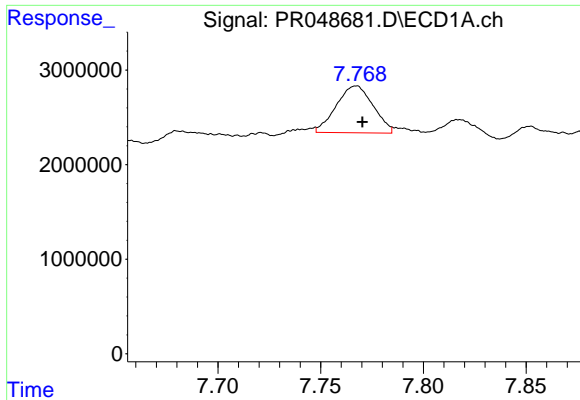
#7 AR-1016-5
 R.T.: 5.421 min
 Delta R.T.: -0.002 min
 Response: 4251359
 Conc: 51.69 ng/ml



#31 AR-1260-1
 R.T.: 7.512 min
 Delta R.T.: -0.003 min
 Response: 6134647
 Conc: 53.98 ng/ml m



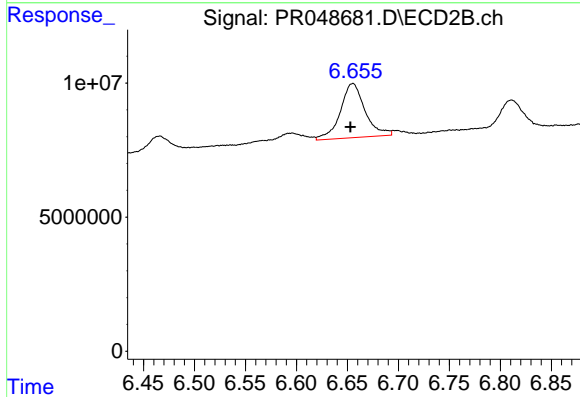
#31 AR-1260-1
 R.T.: 6.466 min
 Delta R.T.: 0.003 min
 Response: 6833457
 Conc: 35.96 ng/ml



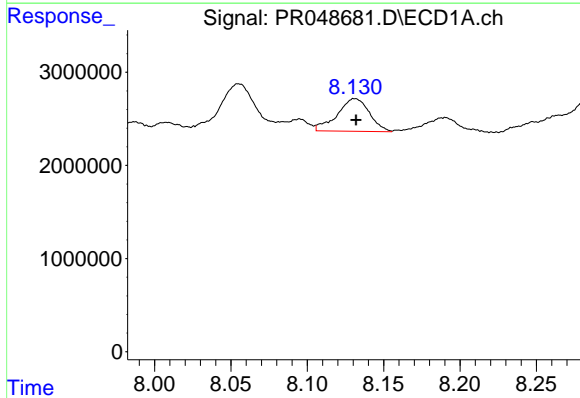
#32 AR-1260-2
 R.T.: 7.768 min
 Delta R.T.: -0.002 min
 Response: 6197757
 Conc: 44.14 ng/ml m

Instrument :
 ECD_R
ClientSampled :
 TI-633MS

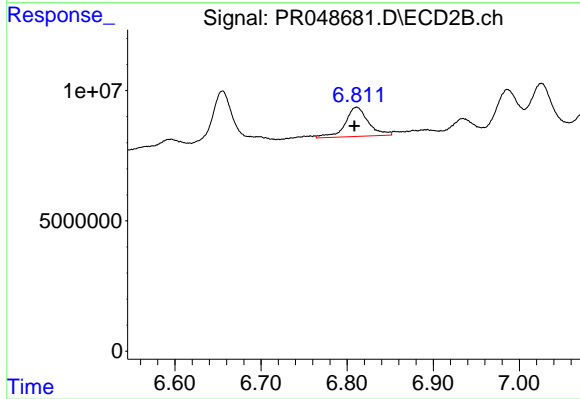
Manual Integrations
APPROVED
 Ankita
 11/19/2020 1:39:01 PM



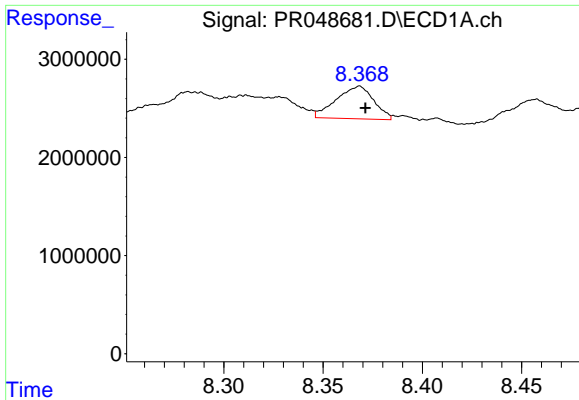
#32 AR-1260-2
 R.T.: 6.656 min
 Delta R.T.: 0.003 min
 Response: 34176627
 Conc: 52.24 ng/ml



#33 AR-1260-3
 R.T.: 8.130 min
 Delta R.T.: -0.002 min
 Response: 5121021
 Conc: 48.02 ng/ml m



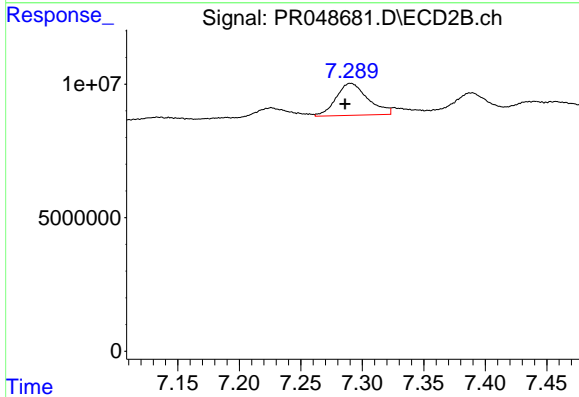
#33 AR-1260-3
 R.T.: 6.811 min
 Delta R.T.: 0.003 min
 Response: 20930856
 Conc: 49.00 ng/ml



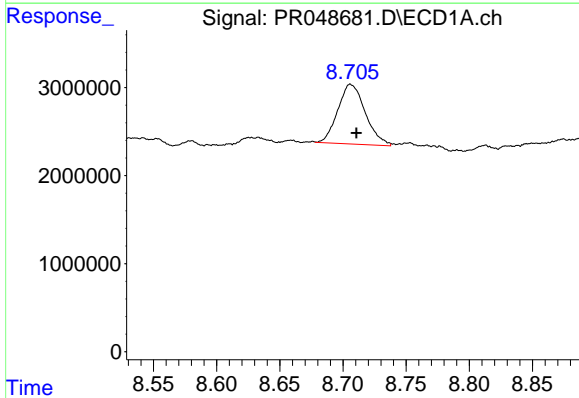
#34 AR-1260-4
 R.T.: 8.368 min
 Delta R.T.: -0.003 min
 Response: 4353779
 Conc: 35.05 ng/ml m

Instrument :
 ECD_R
ClientSampled :
 TI-633MS

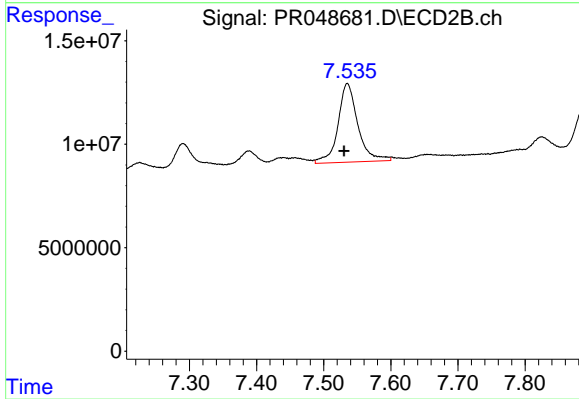
Manual Integrations
APPROVED
 Ankita
 11/19/2020 1:39:01 PM



#34 AR-1260-4
 R.T.: 7.290 min
 Delta R.T.: 0.004 min
 Response: 21616013
 Conc: 42.66 ng/ml



#35 AR-1260-5
 R.T.: 8.705 min
 Delta R.T.: -0.005 min
 Response: 10279050
 Conc: 41.08 ng/ml m



#35 AR-1260-5
 R.T.: 7.535 min
 Delta R.T.: 0.005 min
 Response: 78209619
 Conc: 38.43 ng/ml