

Data Path : Z:\pestpcbsrv\HPCHEM1\ECD\_R\Data\PR111820\  
 Data File : PR048683.D  
 Signal(s) : Signal #1: ECD1A.ch Signal #2: ECD2B.ch  
 Acq On : 18 Nov 2020 10:25  
 Operator : DD\AJ  
 Sample : L4765-03  
 Misc :  
 ALS Vial : 6 Sample Multiplier: 1

**Instrument :**  
 ECD\_R  
**ClientSampled :**  
 CF-OIL

**Manual Integrations**  
**APPROVED**

Ankita  
 11/19/2020 1:39:05 PM

Integration File signal 1: autoint1.e  
 Integration File signal 2: autoint2.e  
 Quant Time: Nov 18 12:09:24 2020  
 Quant Method : Z:\pestpcbsrv\HPCHEM1\ECD\_R\Method\PR110320.M  
 Quant Title : GC EXTRACTABLES  
 QLast Update : Wed Nov 04 04:25:33 2020  
 Response via : Initial Calibration  
 Integrator: ChemStation

Volume Inj. : 2 µl  
 Signal #1 Phase : ZB-MR1 Signal #2 Phase: ZB-MR2  
 Signal #1 Info : 30Mx0.32mmx 0.50µ Signal #2 Info : 30M x 0.32mm x 0.25µm

Compound	RT#1	RT#2	Resp#1	Resp#2	ng/ml	ng/ml
-----						
System Monitoring Compounds						
1) SA Tetrachlo...	4.740	3.905f	31773797	39202982	12.980m	13.502
2) SA Decachlor...	10.652	8.997	42448088	191.6E6	16.111	13.116

Target Compounds

(f)=RT Delta > 1/2 Window (#)=Amounts differ by > 25% (m)=manual int.

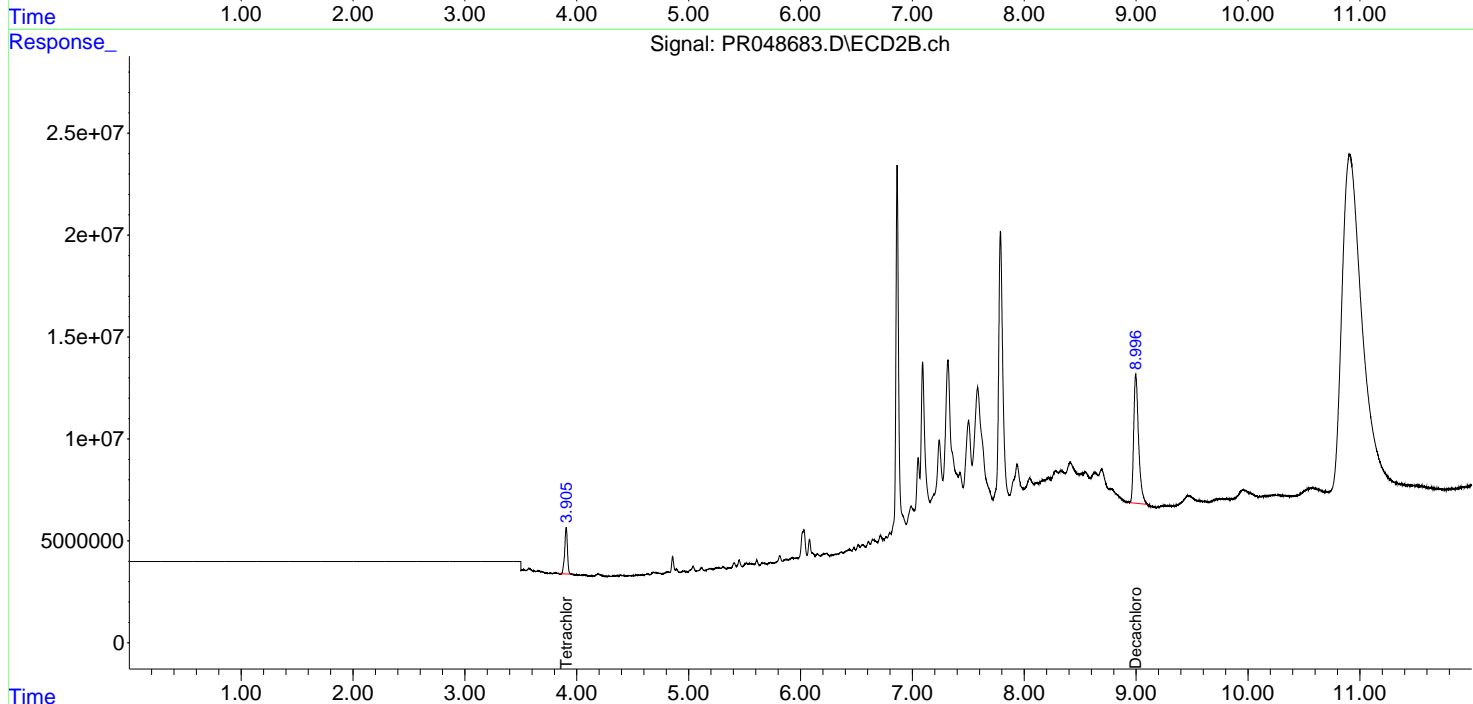
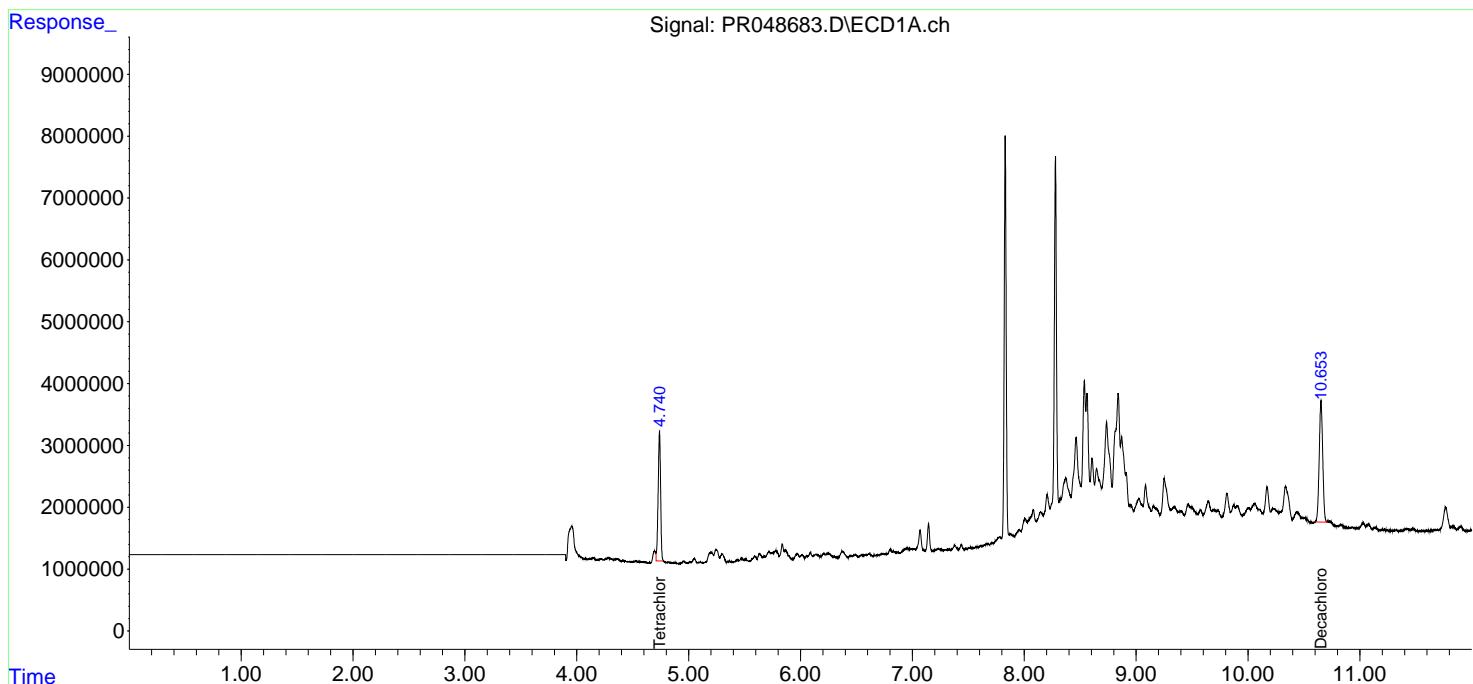
Data Path : Z:\pestpcbsrv\HPCHEM1\ECD\_R\Data\PR111820\  
 Data File : PR048683.D  
 Signal(s) : Signal #1: ECD1A.ch Signal #2: ECD2B.ch  
 Acq On : 18 Nov 2020 10:25  
 Operator : DD\AJ  
 Sample : L4765-03  
 Misc :  
 ALS Vial : 6 Sample Multiplier: 1

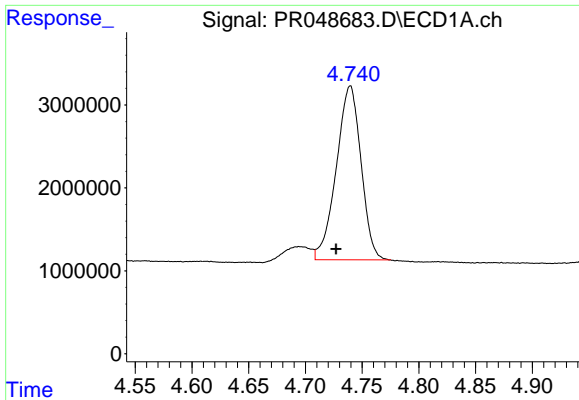
**Instrument :**  
 ECD\_R  
**Client Sampled :**  
 CF-OIL

**Manual Integrations**  
**APPROVED**  
 Ankita  
 11/19/2020 1:39:05 PM

Integration File signal 1: autoint1.e  
 Integration File signal 2: autoint2.e  
 Quant Time: Nov 18 12:09:24 2020  
 Quant Method : Z:\pestpcbsrv\HPCHEM1\ECD\_R\Method\PR110320.M  
 Quant Title : GC EXTRACTABLES  
 QLast Update : Wed Nov 04 04:25:33 2020  
 Response via : Initial Calibration  
 Integrator: ChemStation

Volume Inj. : 2 µl  
 Signal #1 Phase : ZB-MR1 Signal #2 Phase: ZB-MR2  
 Signal #1 Info : 30Mx0.32mmx 0.50µ Signal #2 Info : 30M x 0.32mm x 0.25µm

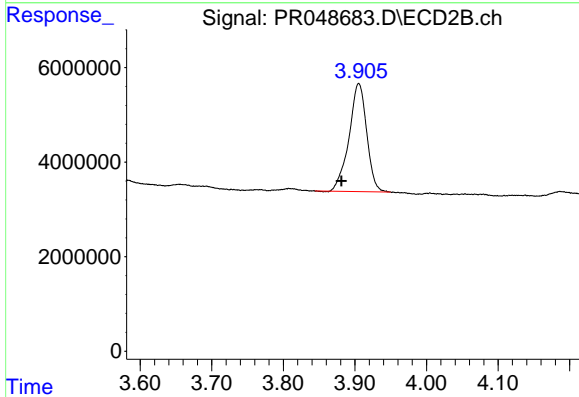




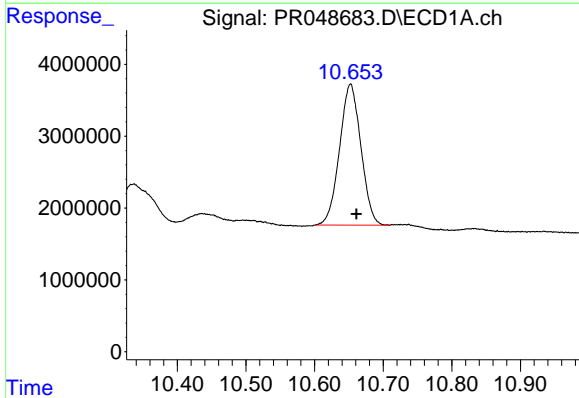
#1 Tetrachloro-m-xylene  
 R.T.: 4.740 min  
 Delta R.T.: 0.013 min  
 Response: 31773797  
 Conc: 12.98 ng/ml m

**Instrument :**  
 ECD\_R  
**ClientSampled :**  
 CF-OIL

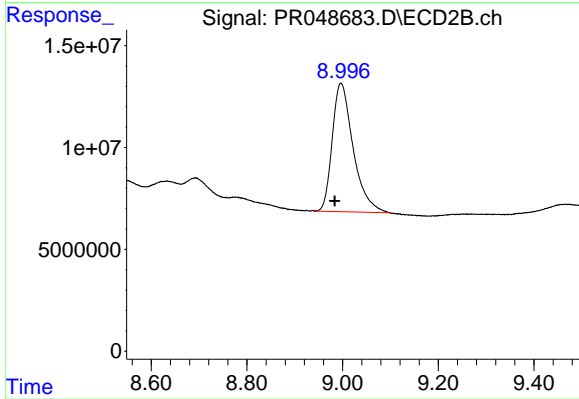
**Manual Integrations**  
**APPROVED**  
 Ankita  
 11/19/2020 1:39:05 PM



#1 Tetrachloro-m-xylene  
 R.T.: 3.905 min  
 Delta R.T.: 0.024 min  
 Response: 39202982  
 Conc: 13.50 ng/ml



#2 Decachlorobiphenyl  
 R.T.: 10.652 min  
 Delta R.T.: -0.009 min  
 Response: 42448088  
 Conc: 16.11 ng/ml



#2 Decachlorobiphenyl  
 R.T.: 8.997 min  
 Delta R.T.: 0.013 min  
 Response: 191565744  
 Conc: 13.12 ng/ml