

Data Path : Z:\pestpcbsrv\HPCHEM1\ECD\_R\Data\PR111820\  
 Data File : PR048687.D  
 Signal(s) : Signal #1: ECD1A.ch Signal #2: ECD2B.ch  
 Acq On : 18 Nov 2020 11:23  
 Operator : DD\AJ  
 Sample : L4767-01  
 Misc :  
 ALS Vial : 10 Sample Multiplier: 1

**Instrument :**  
 ECD\_R  
**ClientSampled :**  
 NWB-1555

**Manual Integrations**  
**APPROVED**  
 Ankita  
 11/19/2020 1:39:13 PM

Integration File signal 1: autoint1.e  
 Integration File signal 2: autoint2.e  
 Quant Time: Nov 18 12:11:19 2020  
 Quant Method : Z:\pestpcbsrv\HPCHEM1\ECD\_R\Method\PR110320.M  
 Quant Title : GC EXTRACTABLES  
 QLast Update : Wed Nov 04 04:25:33 2020  
 Response via : Initial Calibration  
 Integrator: ChemStation

Volume Inj. : 2 µl  
 Signal #1 Phase : ZB-MR1 Signal #2 Phase: ZB-MR2  
 Signal #1 Info : 30Mx0.32mmx 0.50µ Signal #2 Info : 30M x 0.32mm x 0.25µm

Compound	RT#1	RT#2	Resp#1	Resp#2	ng/ml	ng/ml
-----						
System Monitoring Compounds						
1) SA Tetrachlo...	4.725	3.881	32141066	33873513	13.130	11.666
2) SA Decachlor...	10.676	9.022f	38955094	152.4E6	14.785	10.435m#

Target Compounds

(f)=RT Delta > 1/2 Window (#)=Amounts differ by > 25% (m)=manual int.

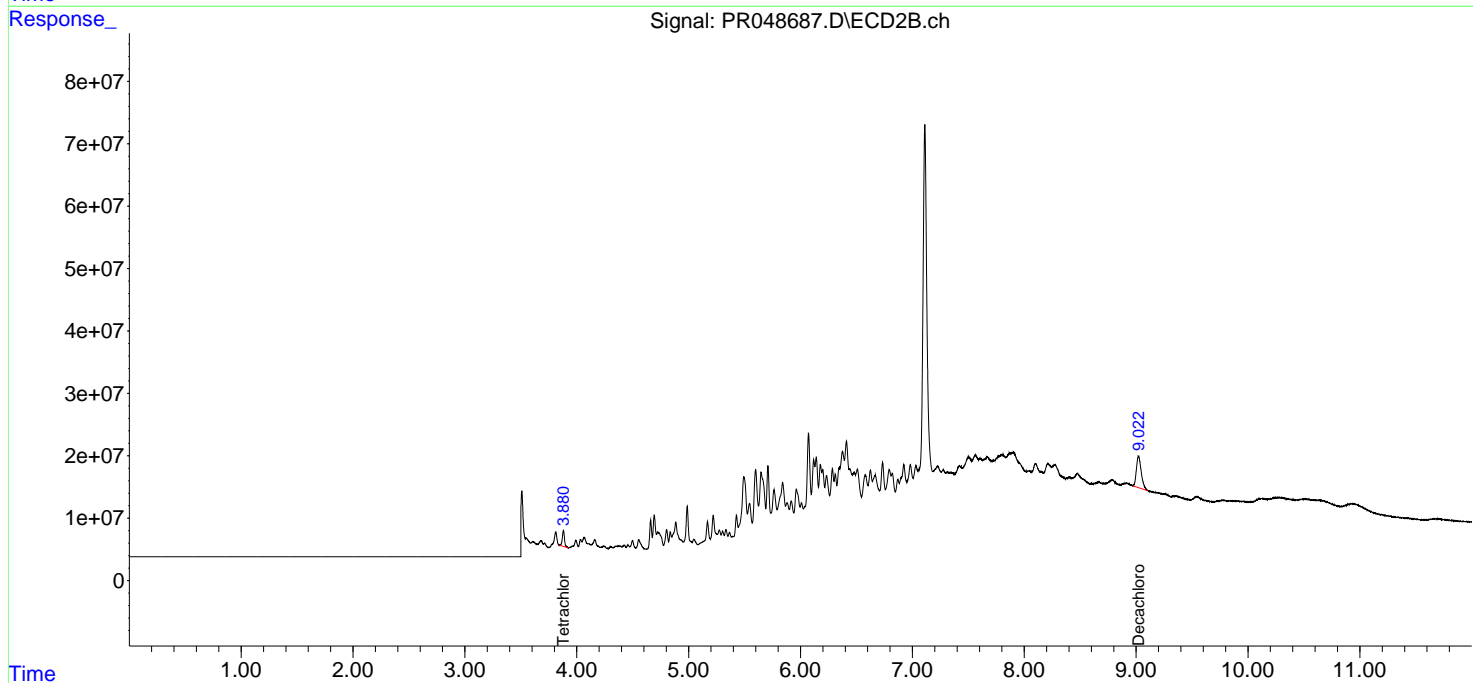
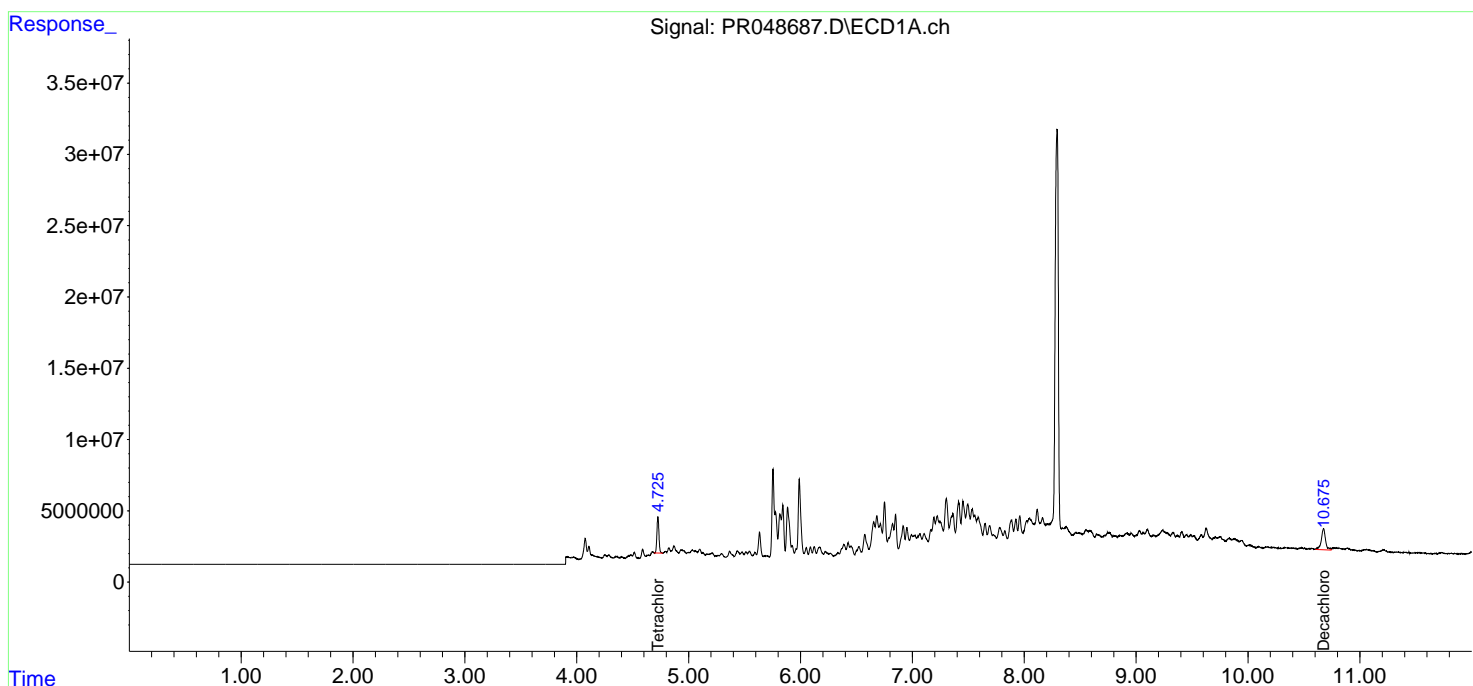
Data Path : Z:\pestpcbsrv\HPCHEM1\ECD\_R\Data\PR111820\  
 Data File : PR048687.D  
 Signal(s) : Signal #1: ECD1A.ch Signal #2: ECD2B.ch  
 Acq On : 18 Nov 2020 11:23  
 Operator : DD\AJ  
 Sample : L4767-01  
 Misc :  
 ALS Vial : 10 Sample Multiplier: 1

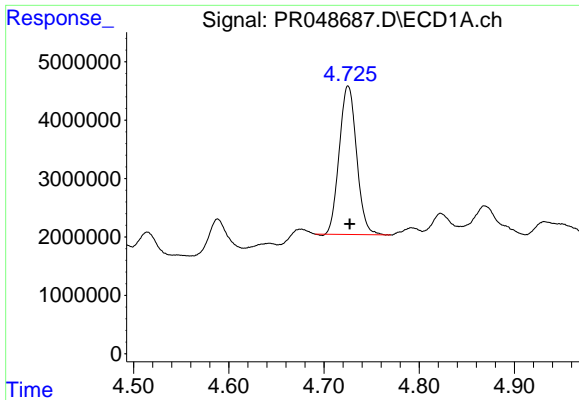
**Instrument :**  
 ECD\_R  
**Client Sampled :**  
 NWB-1555

**Manual Integrations**  
**APPROVED**  
 Ankita  
 11/19/2020 1:39:13 PM

Integration File signal 1: autoint1.e  
 Integration File signal 2: autoint2.e  
 Quant Time: Nov 18 12:11:19 2020  
 Quant Method : Z:\pestpcbsrv\HPCHEM1\ECD\_R\Method\PR110320.M  
 Quant Title : GC EXTRACTABLES  
 QLast Update : Wed Nov 04 04:25:33 2020  
 Response via : Initial Calibration  
 Integrator: ChemStation

Volume Inj. : 2 µl  
 Signal #1 Phase : ZB-MR1 Signal #2 Phase: ZB-MR2  
 Signal #1 Info : 30Mx0.32mmx 0.50µ Signal #2 Info : 30M x 0.32mm x 0.25µm



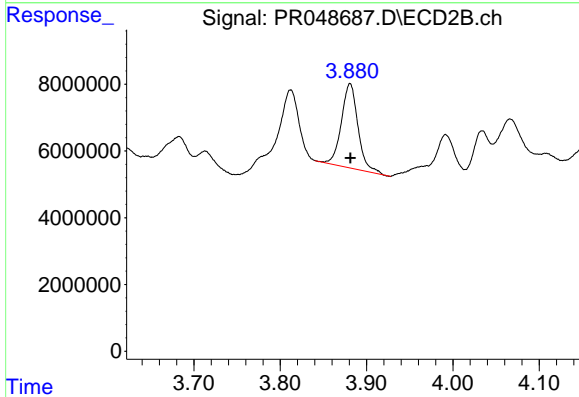


#1 Tetrachloro-m-xylene

R.T.: 4.725 min  
 Delta R.T.: -0.002 min  
 Response: 32141066  
 Conc: 13.13 ng/ml

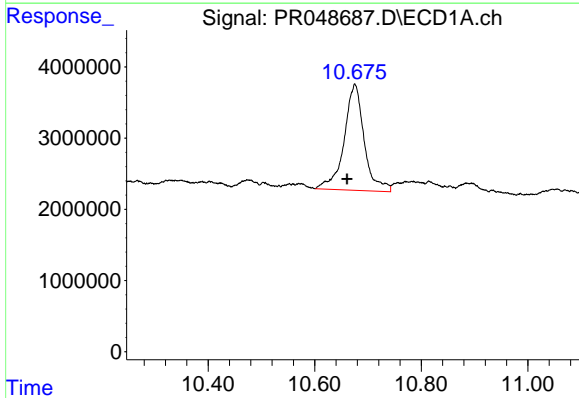
Instrument :  
 ECD\_R  
 ClientSampleId :  
 NWB-1555

Manual Integrations  
 APPROVED  
 Ankita  
 11/19/2020 1:39:13 PM



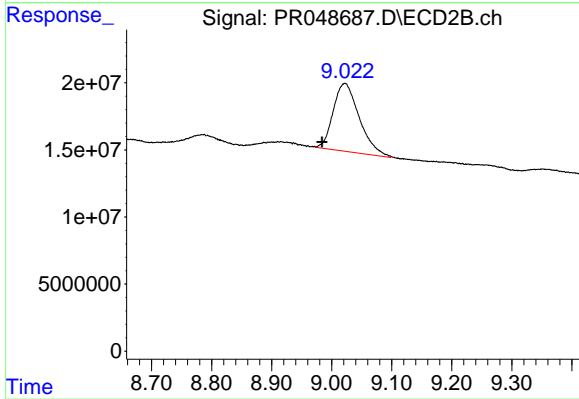
#1 Tetrachloro-m-xylene

R.T.: 3.881 min  
 Delta R.T.: 0.000 min  
 Response: 33873513  
 Conc: 11.67 ng/ml



#2 Decachlorobiphenyl

R.T.: 10.676 min  
 Delta R.T.: 0.015 min  
 Response: 38955094  
 Conc: 14.78 ng/ml



#2 Decachlorobiphenyl

R.T.: 9.022 min  
 Delta R.T.: 0.038 min  
 Response: 152415224  
 Conc: 10.44 ng/ml m