

Data Path : Z:\pestpcbsrv\HPCHEM1\ECD_R\Data\PR111820\
 Data File : PR048688.D
 Signal(s) : Signal #1: ECD1A.ch Signal #2: ECD2B.ch
 Acq On : 18 Nov 2020 11:38
 Operator : DD\AJ
 Sample : L4764-01
 Misc :
 ALS Vial : 11 Sample Multiplier: 1

Instrument :
 ECD_R
 ClientSampleId :
 WH-PIPE-A

Integration File signal 1: autoint1.e
 Integration File signal 2: autoint2.e
 Quant Time: Nov 18 12:11:46 2020
 Quant Method : Z:\pestpcbsrv\HPCHEM1\ECD_R\Method\PR110320.M
 Quant Title : GC EXTRACTABLES
 QLast Update : Wed Nov 04 04:25:33 2020
 Response via : Initial Calibration
 Integrator: ChemStation

Volume Inj. : 2 µl
 Signal #1 Phase : ZB-MR1 Signal #2 Phase: ZB-MR2
 Signal #1 Info : 30Mx0.32mmx 0.50µ Signal #2 Info : 30M x 0.32mm x 0.25µm

Compound	RT#1	RT#2	Resp#1	Resp#2	ng/ml	ng/ml

System Monitoring Compounds						
1) SA Tetrachlo...	4.726	3.881	27441445	43883485	11.210	15.114 #
2) SA Decachlor...	10.653	8.997	29321262	146.5E6	11.128m	10.030

Target Compounds

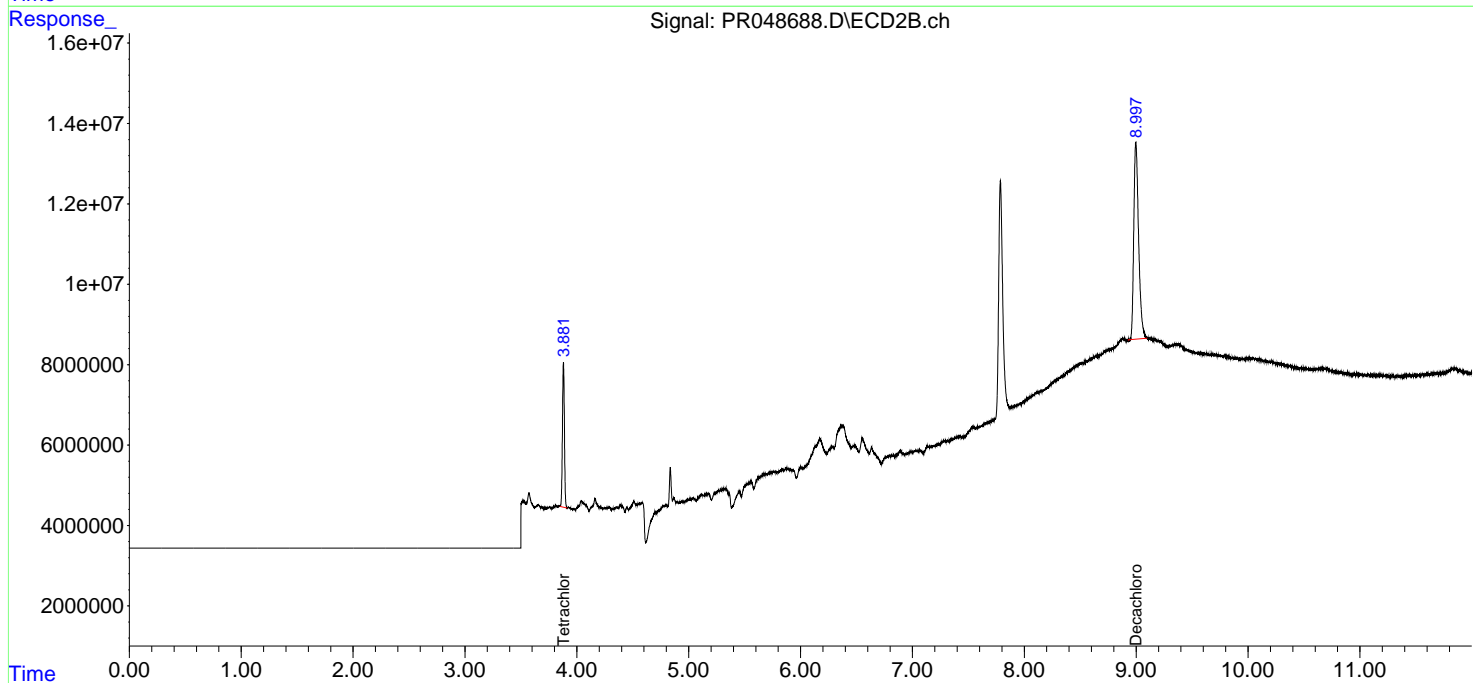
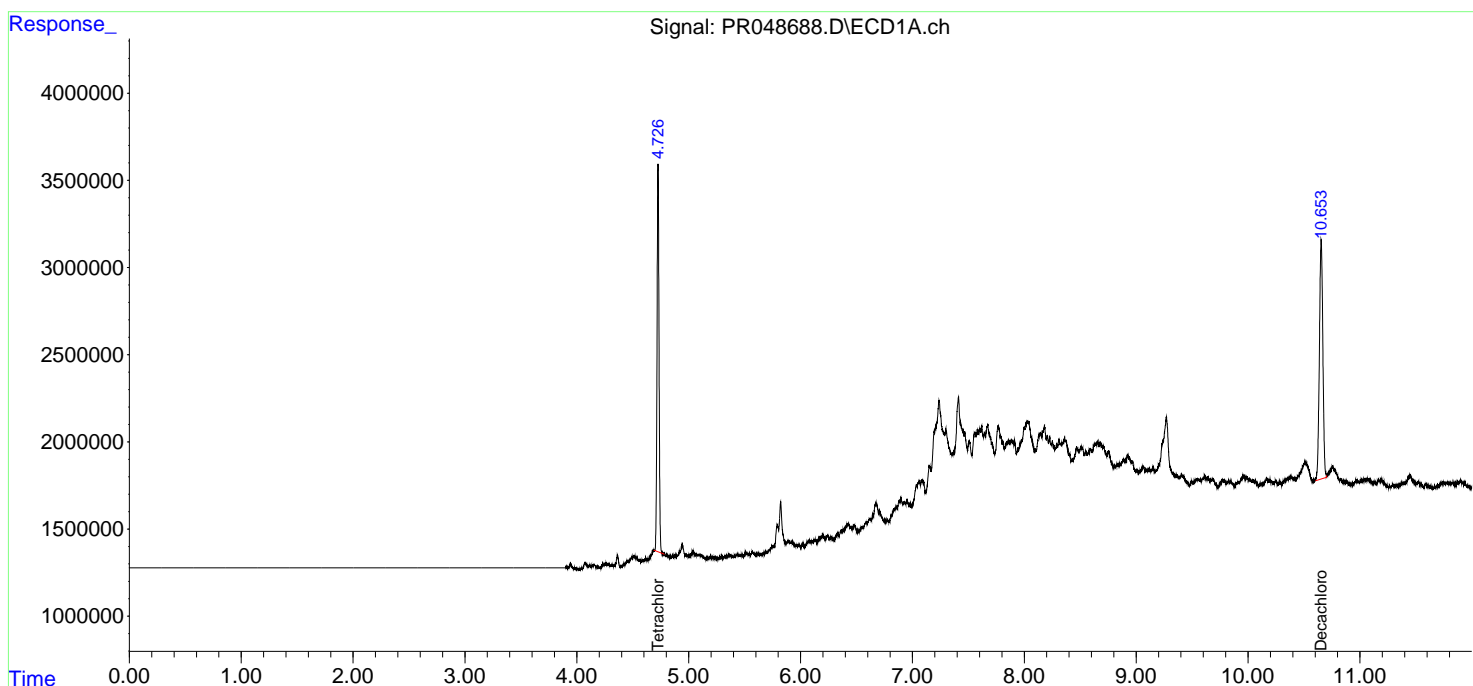
(f)=RT Delta > 1/2 Window (#)=Amounts differ by > 25% (m)=manual int.

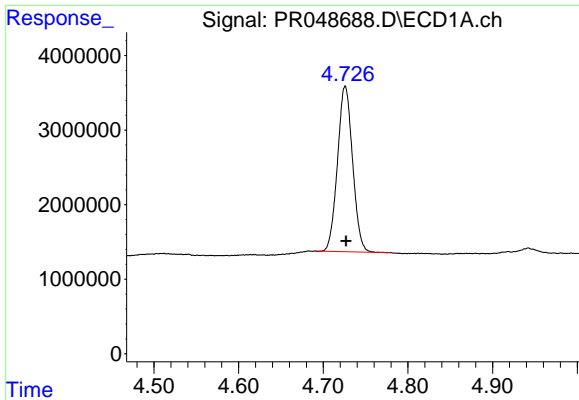
Data Path : Z:\pestpcbsrv\HPCHEM1\ECD_R\Data\PR111820\
 Data File : PR048688.D
 Signal(s) : Signal #1: ECD1A.ch Signal #2: ECD2B.ch
 Acq On : 18 Nov 2020 11:38
 Operator : DD\AJ
 Sample : L4764-01
 Misc :
 ALS Vial : 11 Sample Multiplier: 1

Instrument :
 ECD_R
 ClientSampleId :
 WH-PIPE-A

Integration File signal 1: autoint1.e
 Integration File signal 2: autoint2.e
 Quant Time: Nov 18 12:11:46 2020
 Quant Method : Z:\pestpcbsrv\HPCHEM1\ECD_R\Method\PR110320.M
 Quant Title : GC EXTRACTABLES
 QLast Update : Wed Nov 04 04:25:33 2020
 Response via : Initial Calibration
 Integrator: ChemStation

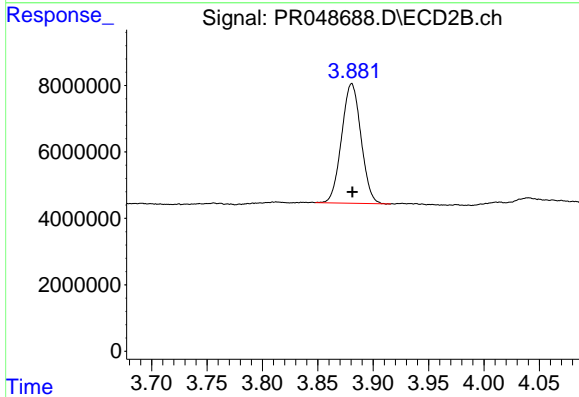
Volume Inj. : 2 µl
 Signal #1 Phase : ZB-MR1 Signal #2 Phase: ZB-MR2
 Signal #1 Info : 30Mx0.32mmx 0.50µ Signal #2 Info : 30M x 0.32mm x 0.25µm



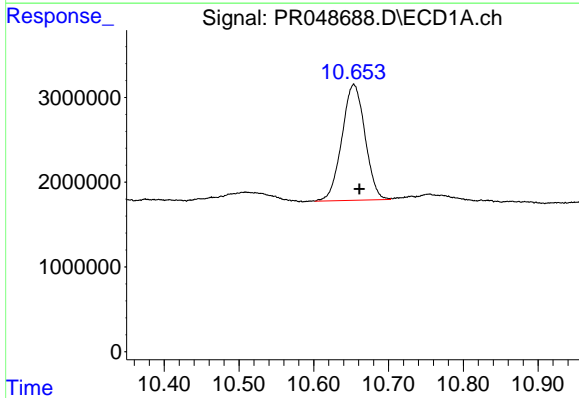


#1 Tetrachloro-m-xylene
 R.T.: 4.726 min
 Delta R.T.: -0.001 min
 Response: 27441445
 Conc: 11.21 ng/ml

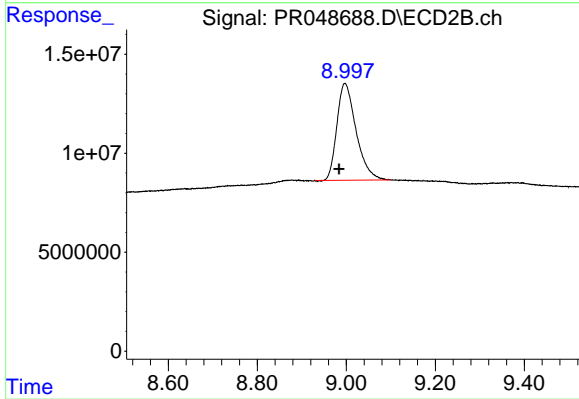
Instrument :
 ECD_R
 ClientSampleId :
 WH-PIPE-A



#1 Tetrachloro-m-xylene
 R.T.: 3.881 min
 Delta R.T.: 0.000 min
 Response: 43883485
 Conc: 15.11 ng/ml



#2 Decachlorobiphenyl
 R.T.: 10.653 min
 Delta R.T.: -0.008 min
 Response: 29321262
 Conc: 11.13 ng/ml m



#2 Decachlorobiphenyl
 R.T.: 8.997 min
 Delta R.T.: 0.013 min
 Response: 146488141
 Conc: 10.03 ng/ml