

Data Path : Z:\pestpcbsrv\HPCHEM1\ECD_R\Data\PR111820\
 Data File : PR048689.D
 Signal(s) : Signal #1: ECD1A.ch Signal #2: ECD2B.ch
 Acq On : 18 Nov 2020 11:52
 Operator : DD\AJ
 Sample : L4764-02
 Misc :
 ALS Vial : 12 Sample Multiplier: 1

Instrument :
 ECD_R
ClientSampled :
 WH-PIPE-B

Manual Integrations
APPROVED
 Ankita
 11/19/2020 1:39:14 PM

Integration File signal 1: autoint1.e
 Integration File signal 2: autoint2.e
 Quant Time: Nov 18 12:16:30 2020
 Quant Method : Z:\pestpcbsrv\HPCHEM1\ECD_R\Method\PR110320.M
 Quant Title : GC EXTRACTABLES
 QLast Update : Wed Nov 04 04:25:33 2020
 Response via : Initial Calibration
 Integrator: ChemStation

Volume Inj. : 2 µl
 Signal #1 Phase : ZB-MR1 Signal #2 Phase: ZB-MR2
 Signal #1 Info : 30Mx0.32mmx 0.50µ Signal #2 Info : 30M x 0.32mm x 0.25µm

Compound	RT#1	RT#2	Resp#1	Resp#2	ng/ml	ng/ml

System Monitoring Compounds						
1) SA Tetrachlo...	4.725	3.880	37534472	43251474	15.333	14.896
2) SA Decachlor...	10.653	8.995	33302324	179.6E6	12.639m	12.299

Target Compounds

(f)=RT Delta > 1/2 Window (#)=Amounts differ by > 25% (m)=manual int.

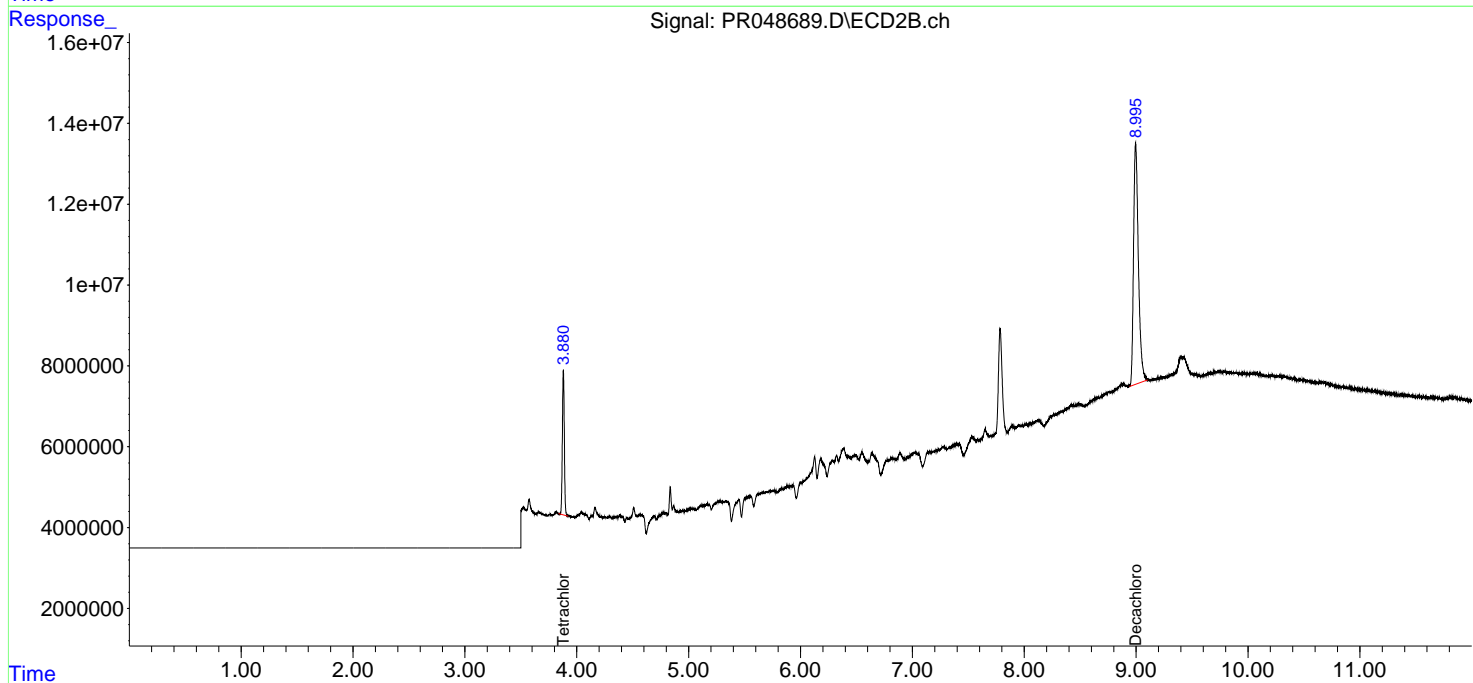
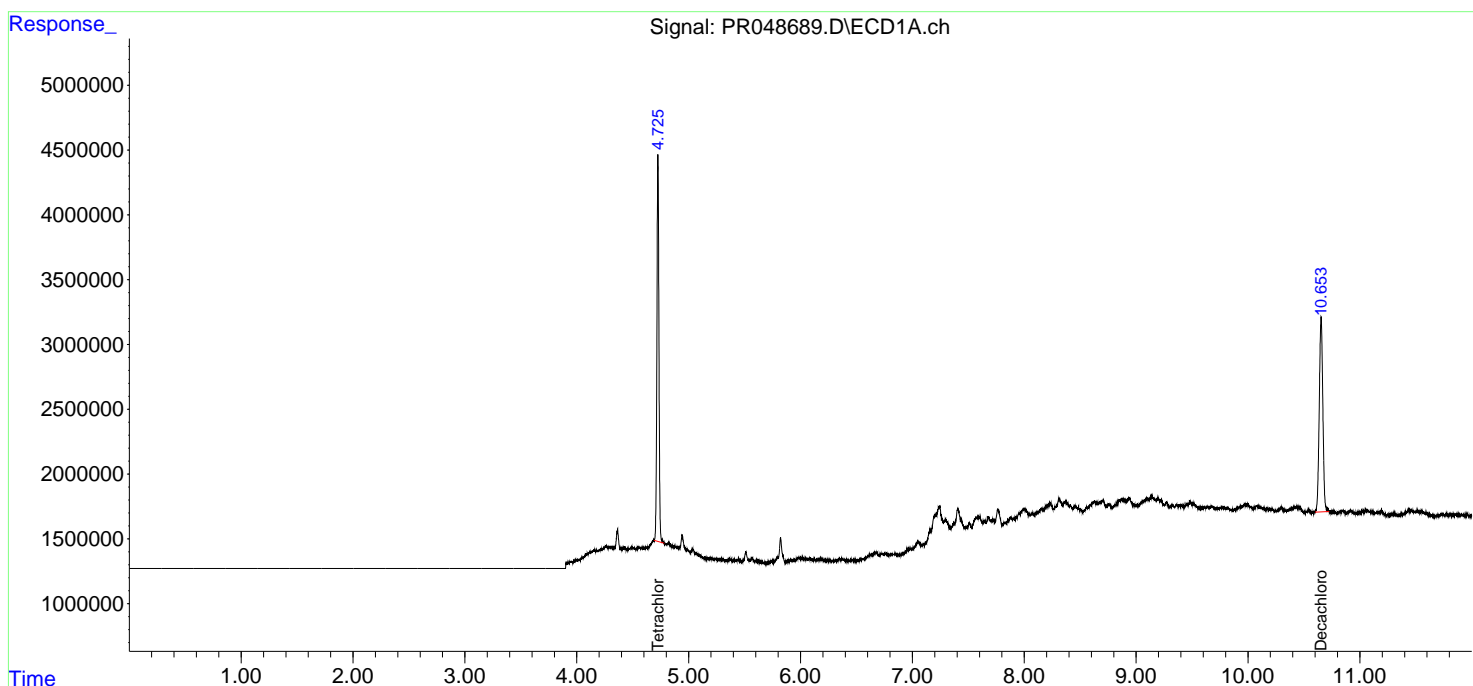
Data Path : Z:\pestpcbsrv\HPCHEM1\ECD_R\Data\PR111820\
 Data File : PR048689.D
 Signal(s) : Signal #1: ECD1A.ch Signal #2: ECD2B.ch
 Acq On : 18 Nov 2020 11:52
 Operator : DD\AJ
 Sample : L4764-02
 Misc :
 ALS Vial : 12 Sample Multiplier: 1

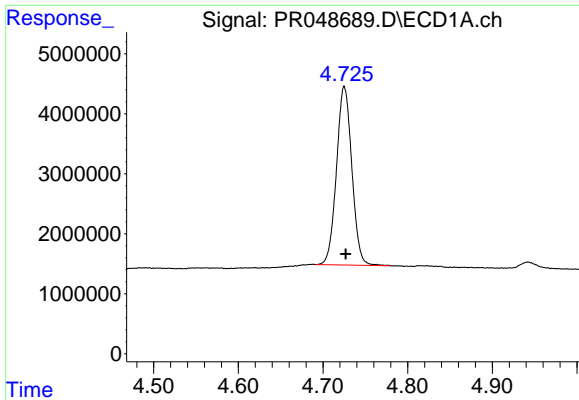
Instrument :
 ECD_R
Client Sampled :
 WH-PIPE-B

Manual Integrations
APPROVED
 Ankita
 11/19/2020 1:39:14 PM

Integration File signal 1: autoint1.e
 Integration File signal 2: autoint2.e
 Quant Time: Nov 18 12:16:30 2020
 Quant Method : Z:\pestpcbsrv\HPCHEM1\ECD_R\Method\PR110320.M
 Quant Title : GC EXTRACTABLES
 QLast Update : Wed Nov 04 04:25:33 2020
 Response via : Initial Calibration
 Integrator: ChemStation

Volume Inj. : 2 µl
 Signal #1 Phase : ZB-MR1 Signal #2 Phase: ZB-MR2
 Signal #1 Info : 30Mx0.32mmx 0.50µ Signal #2 Info : 30M x 0.32mm x 0.25µm

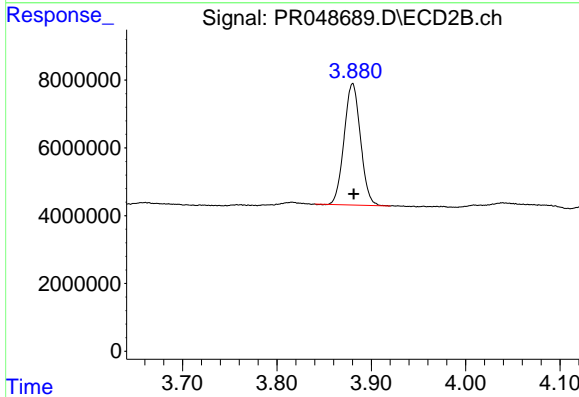




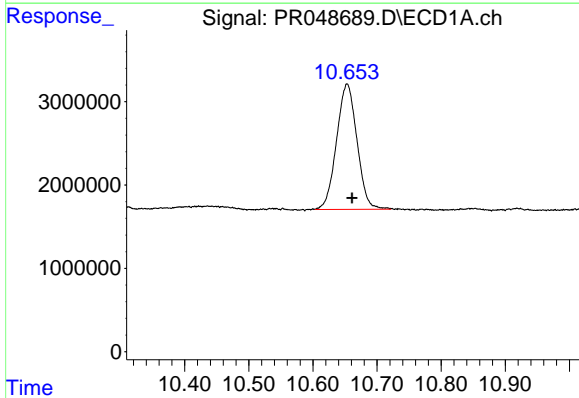
#1 Tetrachloro-m-xylene
 R.T.: 4.725 min
 Delta R.T.: -0.002 min
 Response: 37534472
 Conc: 15.33 ng/ml

Instrument :
 ECD_R
ClientSampled :
 WH-PIPE-B

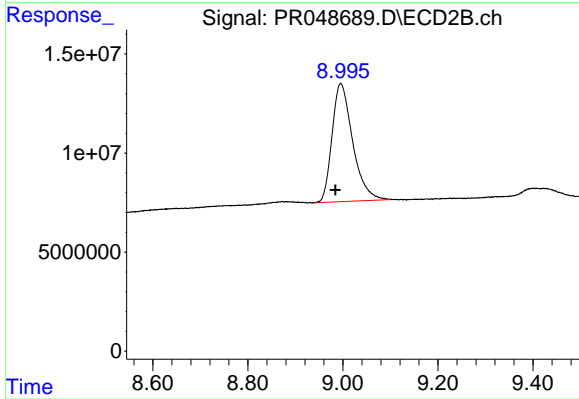
Manual Integrations
APPROVED
 Ankita
 11/19/2020 1:39:14 PM



#1 Tetrachloro-m-xylene
 R.T.: 3.880 min
 Delta R.T.: -0.001 min
 Response: 43251474
 Conc: 14.90 ng/ml



#2 Decachlorobiphenyl
 R.T.: 10.653 min
 Delta R.T.: -0.008 min
 Response: 33302324
 Conc: 12.64 ng/ml m



#2 Decachlorobiphenyl
 R.T.: 8.995 min
 Delta R.T.: 0.012 min
 Response: 179628339
 Conc: 12.30 ng/ml