

Data Path : Z:\pestpcbsrv\HPCHEM1\ECD\_R\Data\PR111820\  
 Data File : PR048691.D  
 Signal(s) : Signal #1: ECD1A.ch Signal #2: ECD2B.ch  
 Acq On : 18 Nov 2020 13:21  
 Operator : DD\AJ  
 Sample : I.BLK  
 Misc :  
 ALS Vial : 2 Sample Multiplier: 1

Instrument :  
 ECD\_R  
 ClientSampleId :  
 I.BLK

Integration File signal 1: autoint1.e  
 Integration File signal 2: autoint2.e  
 Quant Time: Nov 18 14:21:32 2020  
 Quant Method : Z:\pestpcbsrv\HPCHEM1\ECD\_R\Method\PR110320.M  
 Quant Title : GC EXTRACTABLES  
 QLast Update : Wed Nov 04 04:25:33 2020  
 Response via : Initial Calibration  
 Integrator: ChemStation

Volume Inj. : 2 µl  
 Signal #1 Phase : ZB-MR1 Signal #2 Phase: ZB-MR2  
 Signal #1 Info : 30Mx0.32mmx 0.50µ Signal #2 Info : 30M x 0.32mm x 0.25µm

Compound	RT#1	RT#2	Resp#1	Resp#2	ng/ml	ng/ml
-----						
System Monitoring Compounds						
1) SA Tetrachlo...	4.729	3.880	46727250	56452976	19.089	19.443
2) SA Decachlor...	10.658	8.998	41744995	218.1E6	15.844	14.932

Target Compounds

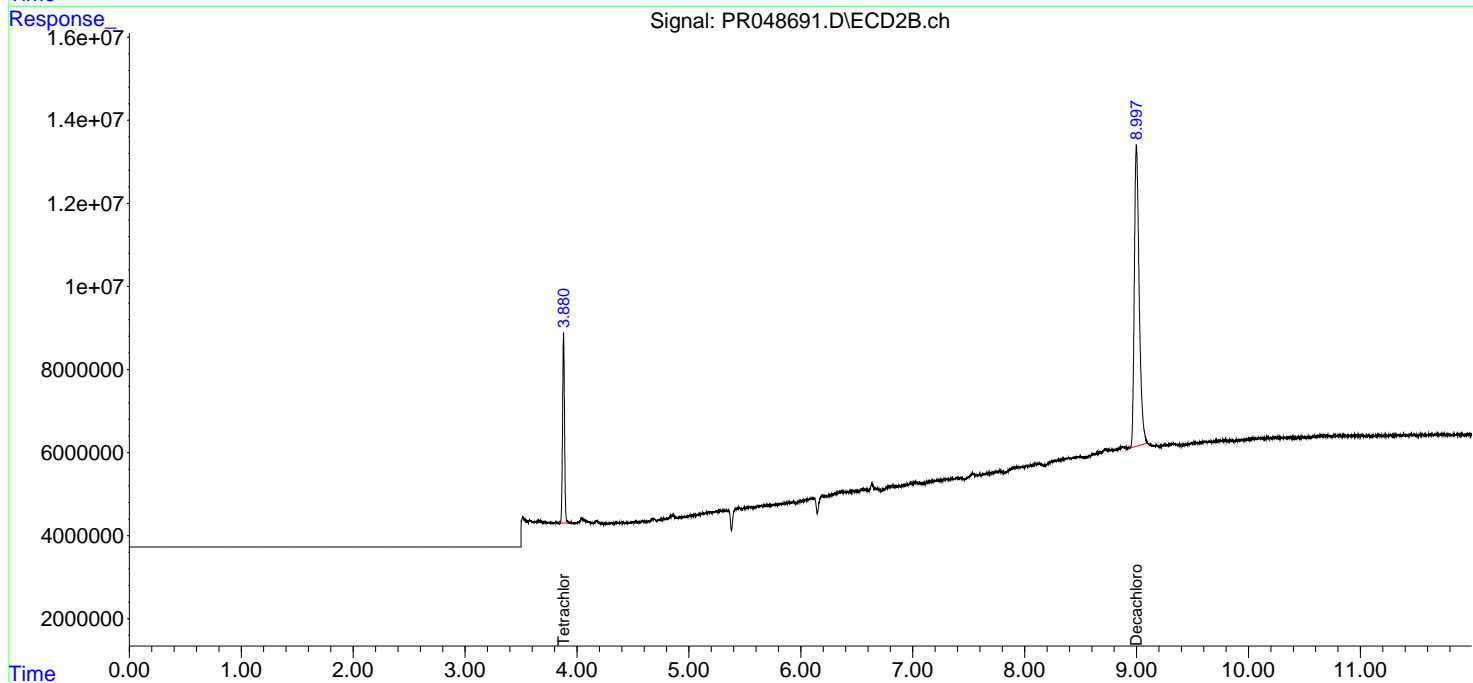
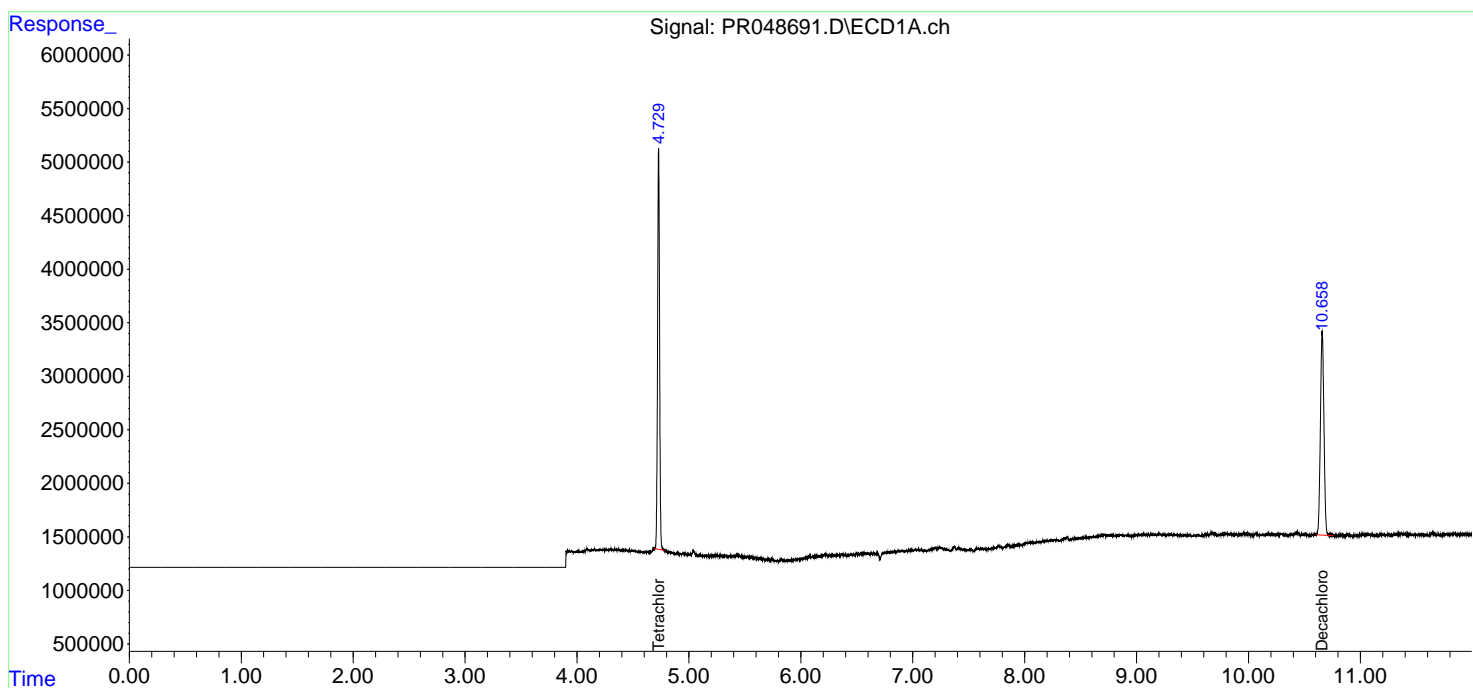
(f)=RT Delta > 1/2 Window (#)=Amounts differ by > 25% (m)=manual int.

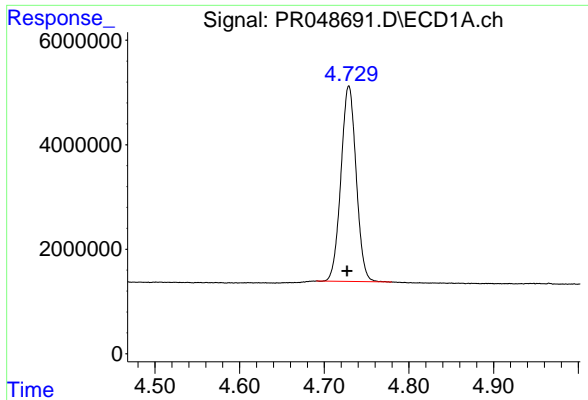
Data Path : Z:\pestpcbsrv\HPCHEM1\ECD\_R\Data\PR111820\  
 Data File : PR048691.D  
 Signal(s) : Signal #1: ECD1A.ch Signal #2: ECD2B.ch  
 Acq On : 18 Nov 2020 13:21  
 Operator : DD\AJ  
 Sample : I.BLK  
 Misc :  
 ALS Vial : 2 Sample Multiplier: 1

Instrument :  
 ECD\_R  
 ClientSampled :  
 I.BLK

Integration File signal 1: autoint1.e  
 Integration File signal 2: autoint2.e  
 Quant Time: Nov 18 14:21:32 2020  
 Quant Method : Z:\pestpcbsrv\HPCHEM1\ECD\_R\Method\PR110320.M  
 Quant Title : GC EXTRACTABLES  
 QLast Update : Wed Nov 04 04:25:33 2020  
 Response via : Initial Calibration  
 Integrator: ChemStation

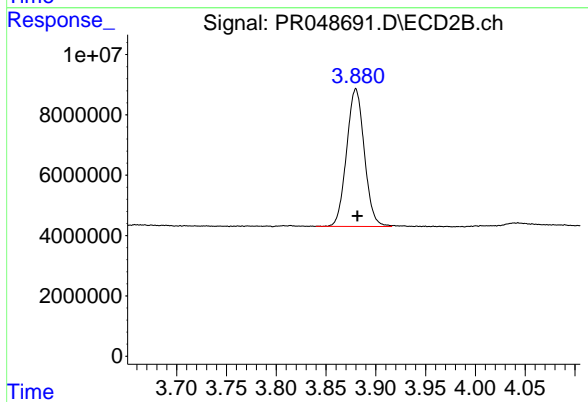
Volume Inj. : 2 µl  
 Signal #1 Phase : ZB-MR1 Signal #2 Phase: ZB-MR2  
 Signal #1 Info : 30Mx0.32mmx 0.50µ Signal #2 Info : 30M x 0.32mm x 0.25µm



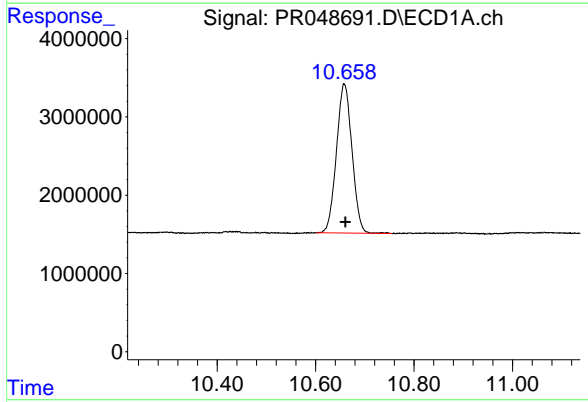


#1 Tetrachloro-m-xylene  
 R.T.: 4.729 min  
 Delta R.T.: 0.002 min  
 Response: 46727250  
 Conc: 19.09 ng/ml

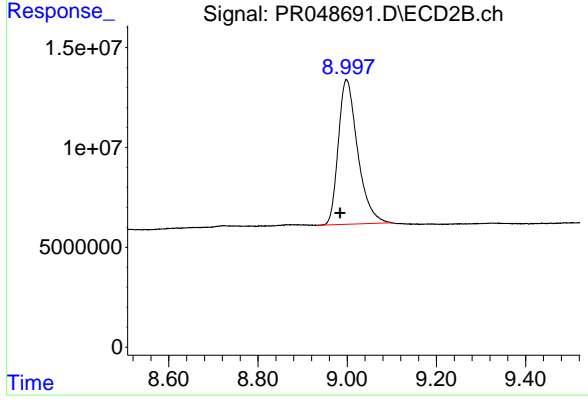
Instrument :  
 ECD\_R  
 ClientSampleId :  
 I.BLK



#1 Tetrachloro-m-xylene  
 R.T.: 3.880 min  
 Delta R.T.: -0.001 min  
 Response: 56452976  
 Conc: 19.44 ng/ml



#2 Decachlorobiphenyl  
 R.T.: 10.658 min  
 Delta R.T.: -0.003 min  
 Response: 41744995  
 Conc: 15.84 ng/ml



#2 Decachlorobiphenyl  
 R.T.: 8.998 min  
 Delta R.T.: 0.014 min  
 Response: 218089361  
 Conc: 14.93 ng/ml