

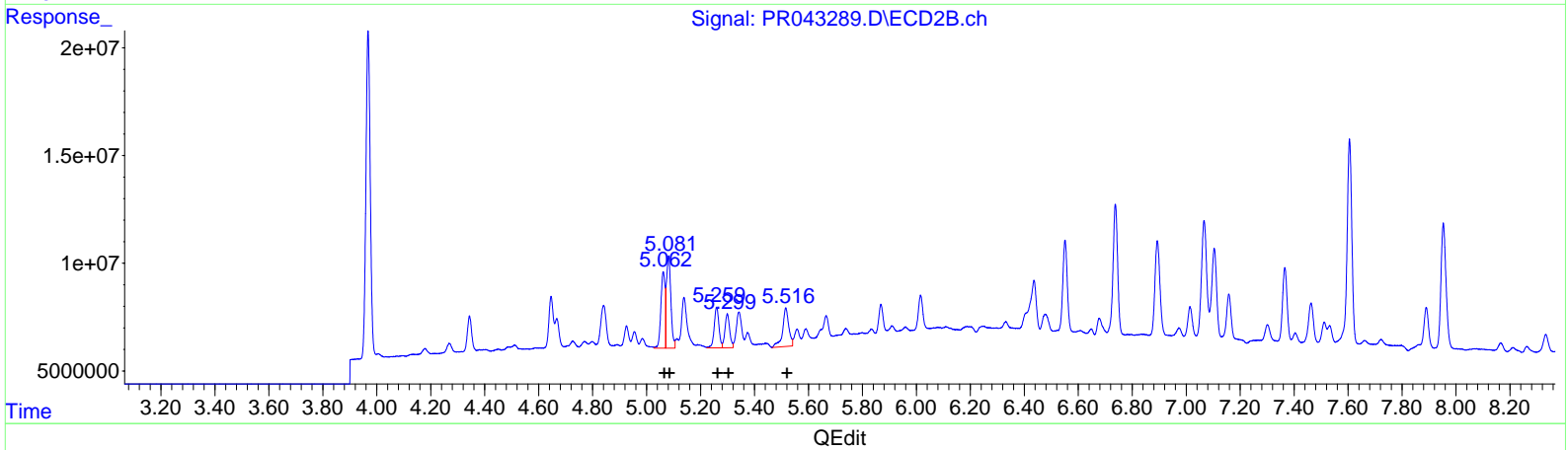
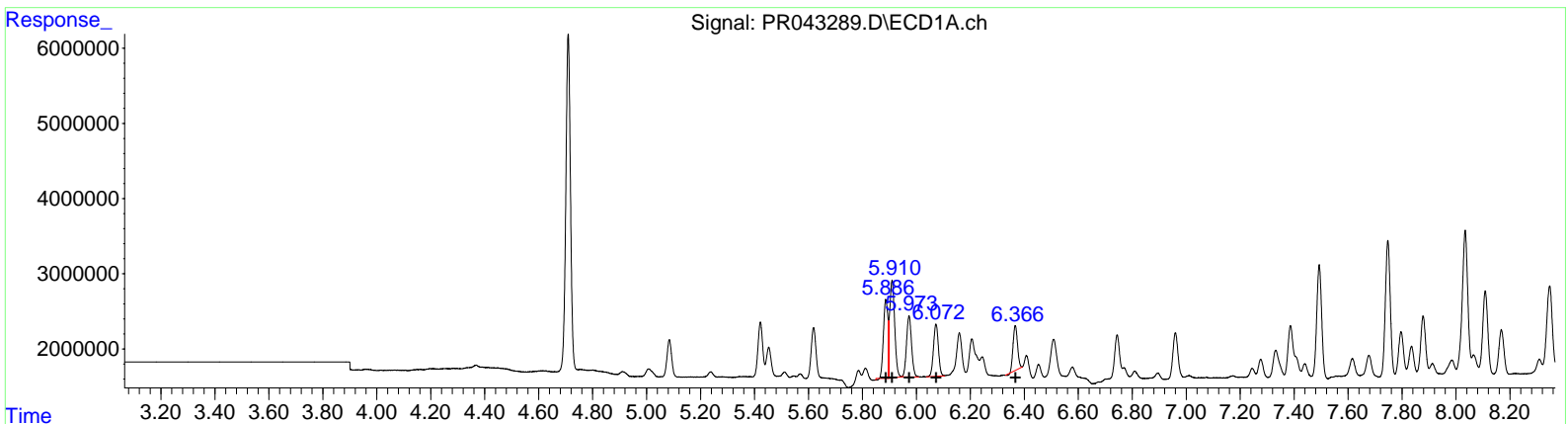
Data Path : Z:\pestpcbsrv\HPCHEM1\ECD_R\Data\PR112019\
 Data File : PR043289.D
 Signal(s) : Signal #1: ECD1A.ch Signal #2: ECD2B.ch
 Acq On : 20 Nov 2019 12:20
 Operator : SM\AJ
 Sample : PB124962BS
 Misc :
 ALS Vial : 7 Sample Multiplier: 1

Instrument :
 ECD_R
Client Sampled :
 ALCS62

Manual Integrations
APPROVED
 Ankita
 11/21/2019 1:31:52 PM

Integration File signal 1: autoint1.e
 Integration File signal 2: autoint2.e
 Quant Time: Nov 21 00:49:47 2019
 Quant Method : Z:\pestpcbsrv\HPCHEM1\ECD_R\Method\PR110219CLP.M
 Quant Title : GC EXTRACTABLES
 QLast Update : Sat Nov 02 01:05:46 2019
 Response via : Initial Calibration
 Integrator: ChemStation

Volume Inj. : 1 µl
 Signal #1 Phase : ZB MR1 Signal #2 Phase: ZB MR2
 Signal #1 Info : 30Mx0.32mmx 0.5µm Signal #2 Info : 30M x 0.32mm x 0.25µm



(3) AR-1016-1 (L1)

R.T.	Response	Conc
5.89	12206279	65.11
5.91	16835252	64.05
5.97	10502874	67.13
6.07	8804496	67.62
6.37	6813552	52.77

(3) AR-1016-1 #2 (L1)

R.T.	Response	Conc
5.06	38791245	65.36
5.08	48697784	60.78
5.26	23130623	60.92
5.30	19240907	68.46
5.52	28519161	89.94

Quantitation Report (Qedit)

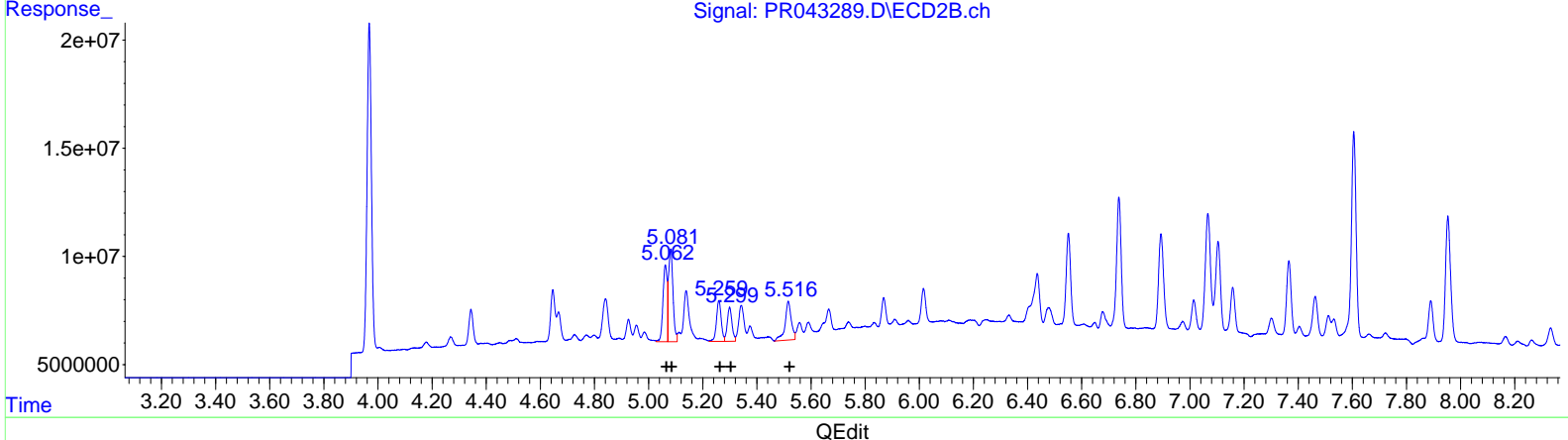
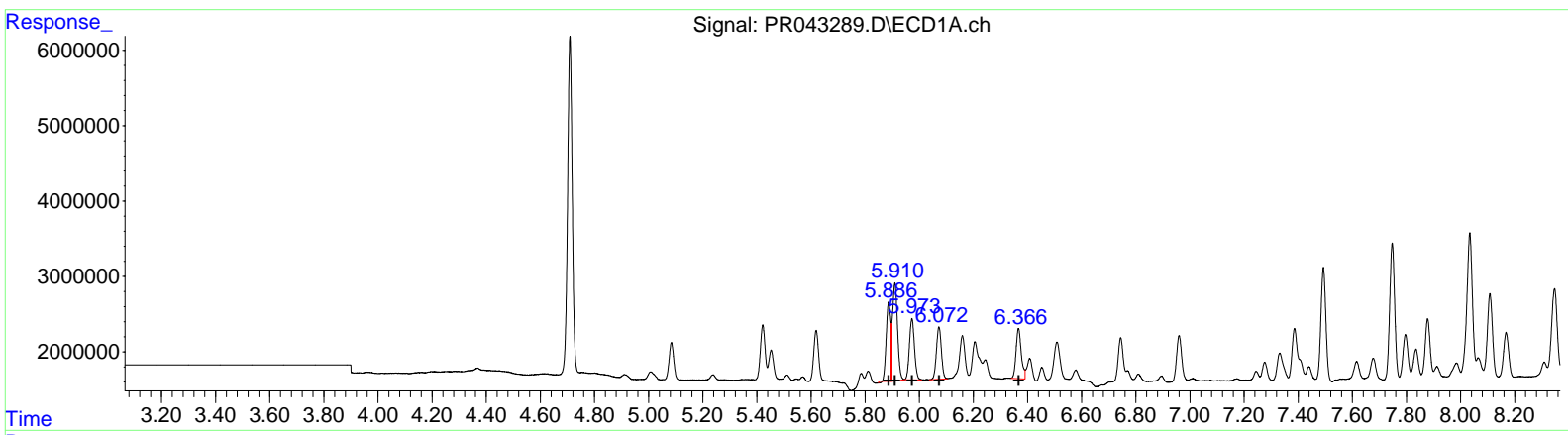
Data Path : Z:\pestpcbsrv\HPCHEM1\ECD_R\Data\PR112019\
 Data File : PR043289.D
 Signal(s) : Signal #1: ECD1A.ch Signal #2: ECD2B.ch
 Acq On : 20 Nov 2019 12:20
 Operator : SM\AJ
 Sample : PB124962BS
 Misc :
 ALS Vial : 7 Sample Multiplier: 1

Instrument :
 ECD_R
Client Sampled :
 ALCS62

Manual Integrations
APPROVED
 Ankita
 11/21/2019 1:31:52 PM

Integration File signal 1: autoint1.e
 Integration File signal 2: autoint2.e
 Quant Time: Nov 21 00:49:47 2019
 Quant Method : Z:\pestpcbsrv\HPCHEM1\ECD_R\Method\PR110219CLP.M
 Quant Title : GC EXTRACTABLES
 QLast Update : Sat Nov 02 01:05:46 2019
 Response via : Initial Calibration
 Integrator: ChemStation

Volume Inj. : 1 µl
 Signal #1 Phase : ZB MR1 Signal #2 Phase: ZB MR2
 Signal #1 Info : 30Mx0.32mmx 0.5µm Signal #2 Info : 30M x 0.32mm x 0.25µm



QEdit

(3) AR-1016-1 (L1)		
R.T.	Response	Conc
5.89	12206279	65.11
5.91	16835252	64.05
5.97	10502874	67.13
6.07	8804496	67.62
6.37	8935514	69.20
(3) AR-1016-1 #2 (L1)		
R.T.	Response	Conc
5.06	38791245	65.36
5.08	48697784	60.78
5.26	23130623	60.92
5.30	19240907	68.46
5.52	28519161	89.94

Data Path : Z:\pestpcbsrv\HPCHEM1\ECD_R\Data\PR112019\
 Data File : PR043289.D
 Signal(s) : Signal #1: ECD1A.ch Signal #2: ECD2B.ch
 Acq On : 20 Nov 2019 12:20
 Operator : SM\AJ
 Sample : PB124962BS
 Misc :
 ALS Vial : 7 Sample Multiplier: 1

Instrument :
 ECD_R
 Client Sampled :
 ALCS62

Integration File signal 1: autoint1.e
 Integration File signal 2: autoint2.e
 Quant Time: Nov 21 00:49:47 2019
 Quant Method : Z:\pestpcbsrv\HPCHEM1\ECD_R\Method\PR110219CLP.M
 Quant Title : GC EXTRACTABLES
 QLast Update : Sat Nov 02 01:05:46 2019
 Response via : Initial Calibration
 Integrator: ChemStation

Manual Integrations
 APPROVED

Ankita
 11/21/2019 1:31:52 PM

Volume Inj. : 1 µl
 Signal #1 Phase : ZB MR1 Signal #2 Phase: ZB MR2
 Signal #1 Info : 30Mx0.32mmx 0.5µm Signal #2 Info : 30M x 0.32mm x 0.25µm

Compound	RT#1	RT#2	Resp#1	Resp#2	ng/ml	ng/ml

System Monitoring Compounds						
1) SA Tetrachlo...	4.710	3.968	53458336	170.4E6	9.525	8.822
2) SA Decachlor...	10.620	9.060	115.0E6	284.5E6	31.941	25.298
Target Compounds						
3) L1 AR-1016-1	5.887	5.062	12206279	38791245	65.115	65.363
4) L1 AR-1016-2	5.910	5.082	16835252	48697784	64.054	60.778
5) L1 AR-1016-3	5.973	5.260	10502874	23130623	67.133	60.918
6) L1 AR-1016-4	6.073	5.300	8804496	19240907	67.625	68.455
7) L1 AR-1016-5	6.366	5.516	8935514	28519161	69.202m	89.936
31) L7 AR-1260-1	7.493	6.551	19078000	51119935	84.999	78.050
32) L7 AR-1260-2	7.748	6.738	22513480	73123075	84.869	80.076
33) L7 AR-1260-3	8.109	6.893	14637075	58573893	73.817	76.380
34) L7 AR-1260-4	8.347	7.366	17960175	43730818	78.566	69.116
35) L7 AR-1260-5	8.685	7.606	35270526	121.2E6	77.008	68.626

3 AJ
 11/22/19

(f)=RT Delta > 1/2 Window (#)=Amounts differ by > 25% (m)=manual int.