

Data Path : Z:\pestpcbsrv\HPCHEM1\ECD\_R\Data\PR112119\  
 Data File : PR043405.D  
 Signal(s) : Signal #1: ECD1A.ch Signal #2: ECD2B.ch  
 Acq On : 22 Nov 2019 00:42  
 Operator : SM\AJ  
 Sample : K5915-14  
 Misc :  
 ALS Vial : 51 Sample Multiplier: 1

Instrument :  
 ECD\_R  
 ClientSampleId :  
 JLNS2

Integration File signal 1: autoint1.e  
 Integration File signal 2: autoint2.e  
 Quant Time: Nov 22 03:08:24 2019  
 Quant Method : Z:\pestpcbsrv\HPCHEM1\ECD\_R\Method\PR110219CLP.M  
 Quant Title : GC EXTRACTABLES  
 QLast Update : Sat Nov 02 01:05:46 2019  
 Response via : Initial Calibration  
 Integrator: ChemStation

Volume Inj. : 1 µl  
 Signal #1 Phase : ZB MR1 Signal #2 Phase: ZB MR2  
 Signal #1 Info : 30Mx0.32mmx 0.5µm Signal #2 Info : 30M x 0.32mm x 0.25µm

Compound	RT#1	RT#2	Resp#1	Resp#2	ng/ml	ng/ml
----------	------	------	--------	--------	-------	-------

System Monitoring Compounds

1) SA Tetrachlo...	4.707	3.966	80851373	267.0E6	14.406	13.822
2) SA Decachlor...	10.617	9.058	97743684	271.7E6	27.141	24.157

Target Compounds

3) L1 AR-1016-1	0.000	5.057	0	2528920	N.D.	4.261 #
4) L1 AR-1016-2	0.000	5.111	0	2063507	N.D.	2.575 #
5) L1 AR-1016-3	0.000	5.297	0	2066481	N.D.	5.442 #
6) L1 AR-1016-4	0.000	5.297	0	2066481	N.D.	7.352 #
7) L1 AR-1016-5	0.000	5.516	0	3558257	N.D.	11.221 #
8) L2 AR-1221-1	0.000	4.220f	0	1395622	N.D.	7.155 #
9) L2 AR-1221-2	5.020	4.273	1134994	5962099	29.556	44.443 #
10) L2 AR-1221-3	5.020f	4.341	1134994	1112627	8.896	2.439 #
11) L3 AR-1232-1	5.020f	4.341	1134994	1112627	10.277	2.819 #
12) L3 AR-1232-2	5.640	5.111	293604	2063507	5.147	5.599
13) L3 AR-1232-3	0.000	5.297	0	2066481	N.D.	11.958 #
14) L3 AR-1232-4	0.000	5.339	0	1657604	N.D.	12.404 #
15) L3 AR-1232-5	0.000	5.516	0	3558257	N.D.	26.111 #
16) L4 AR-1242-1	0.000	5.057	0	2528920	N.D.	5.522 #
17) L4 AR-1242-2	0.000	5.111	0	2063507	N.D.	3.370 #
18) L4 AR-1242-3	0.000	5.297	0	2066481	N.D.	7.076 #
19) L4 AR-1242-4	0.000	5.339	0	1657604	N.D.	6.576 #
20) L4 AR-1242-5	6.797	5.837	305686	5752827	2.828	19.360 #
21) L5 AR-1248-1	0.000	5.057	0	2528920	N.D.	6.792 #
22) L5 AR-1248-2	0.000	5.297	0	2066481	N.D.	5.377 #
23) L5 AR-1248-3	0.000	5.339	0	1657604	N.D.	4.384 #
24) L5 AR-1248-4	6.797	5.516	305686	3558257	1.542	8.542 #
25) L5 AR-1248-5	6.797	5.916	305686	8155726	1.638	18.512 #
26) L6 AR-1254-1	6.745	5.837f	921967	5752827	4.793	9.214 #
27) L6 AR-1254-2	6.954	5.983f	361139	3090434	1.225	5.502 #
28) L6 AR-1254-3	7.342	6.432	603803	4404654	1.959	4.510 #
29) L6 AR-1254-4	7.609	6.630	711541	7889791	3.150	11.041 #
30) L6 AR-1254-5	8.033	0.000	968728	0	4.147	N.D. #
31) L7 AR-1260-1	7.496	6.553	386615	6297217	1.723	9.615 #
32) L7 AR-1260-2	7.741	6.735	357909	4738372	1.349	5.189 #
33) L7 AR-1260-3	8.106	0.000	529829	0	2.672	N.D. #
35) L7 AR-1260-5	8.680	0.000	439171	0	0.959	N.D. #
36) L8 AR-1262-1	8.173	0.000	580038	0	5.078	N.D. #
37) L8 AR-1262-2	8.680	0.000	439171	0	0.843	N.D. #
38) L8 AR-1262-3	9.012	7.890	128616	2427045	0.386	3.272 #
40) L8 AR-1262-5	9.753f	0.000	126883	0	0.751	N.D. #
41) L9 AR-1268-1	9.012	7.890	128616	2427045	0.220	1.095 #
43) L9 AR-1268-3	9.356	8.165	729479	4467373	1.688	2.695 #
44) L9 AR-1268-4	9.753f	0.000	126883	0	0.673	N.D. #

Data Path : Z:\pestpcbsrv\HPCHEM1\ECD\_R\Data\PR112119\  
 Data File : PR043405.D  
 Signal(s) : Signal #1: ECD1A.ch Signal #2: ECD2B.ch  
 Acq On : 22 Nov 2019 00:42  
 Operator : SM\AJ  
 Sample : K5915-14  
 Misc :  
 ALS Vial : 51 Sample Multiplier: 1

Instrument :  
 ECD\_R  
 ClientSampleId :  
 JLNS2

Integration File signal 1: autoint1.e  
 Integration File signal 2: autoint2.e  
 Quant Time: Nov 22 03:08:24 2019  
 Quant Method : Z:\pestpcbsrv\HPCHEM1\ECD\_R\Method\PR110219CLP.M  
 Quant Title : GC EXTRACTABLES  
 QLast Update : Sat Nov 02 01:05:46 2019  
 Response via : Initial Calibration  
 Integrator: ChemStation

Volume Inj. : 1 µl  
 Signal #1 Phase : ZB MR1 Signal #2 Phase: ZB MR2  
 Signal #1 Info : 30Mx0.32mmx 0.5µm Signal #2 Info : 30M x 0.32mm x 0.25µm

	Compound	RT#1	RT#2	Resp#1	Resp#2	ng/ml	ng/ml
45)	L9 AR-1268-5	10.255	8.785	801093	6509384	0.569	1.382 #

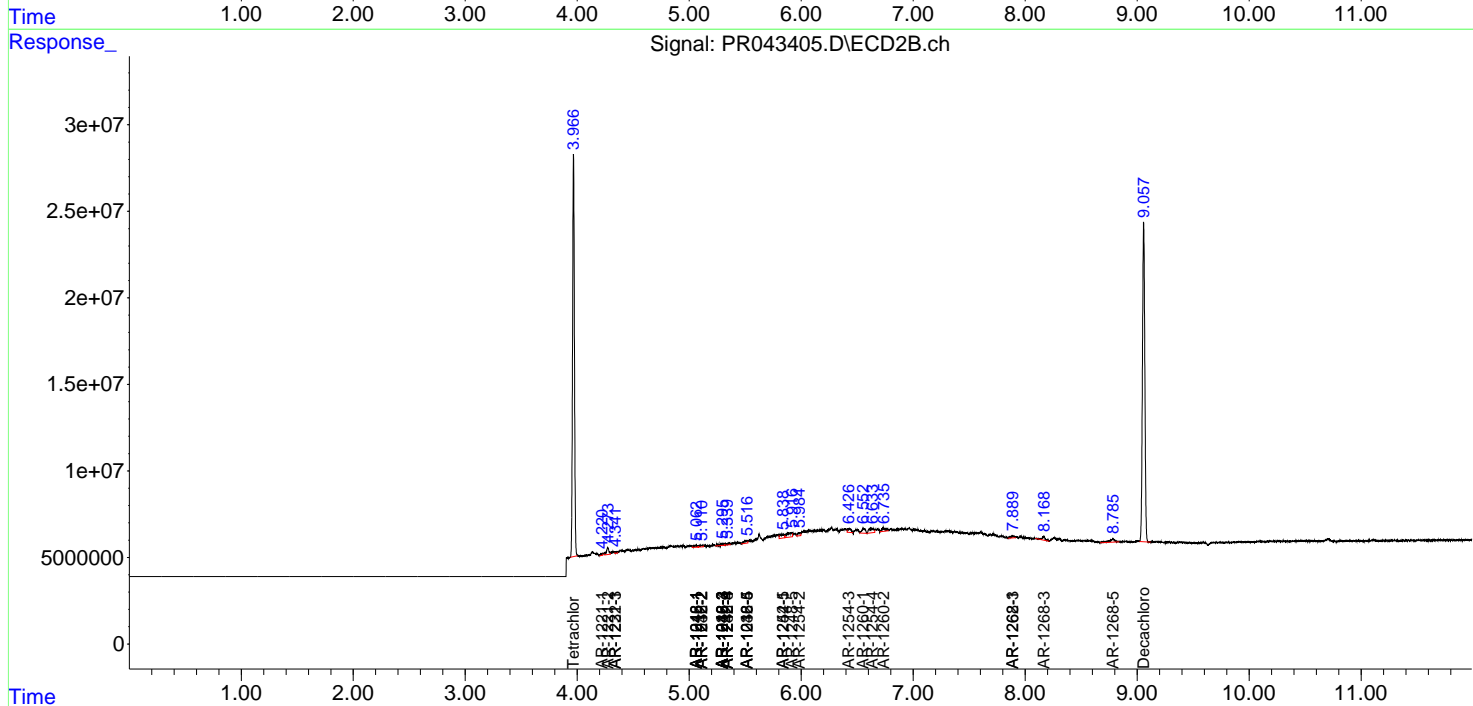
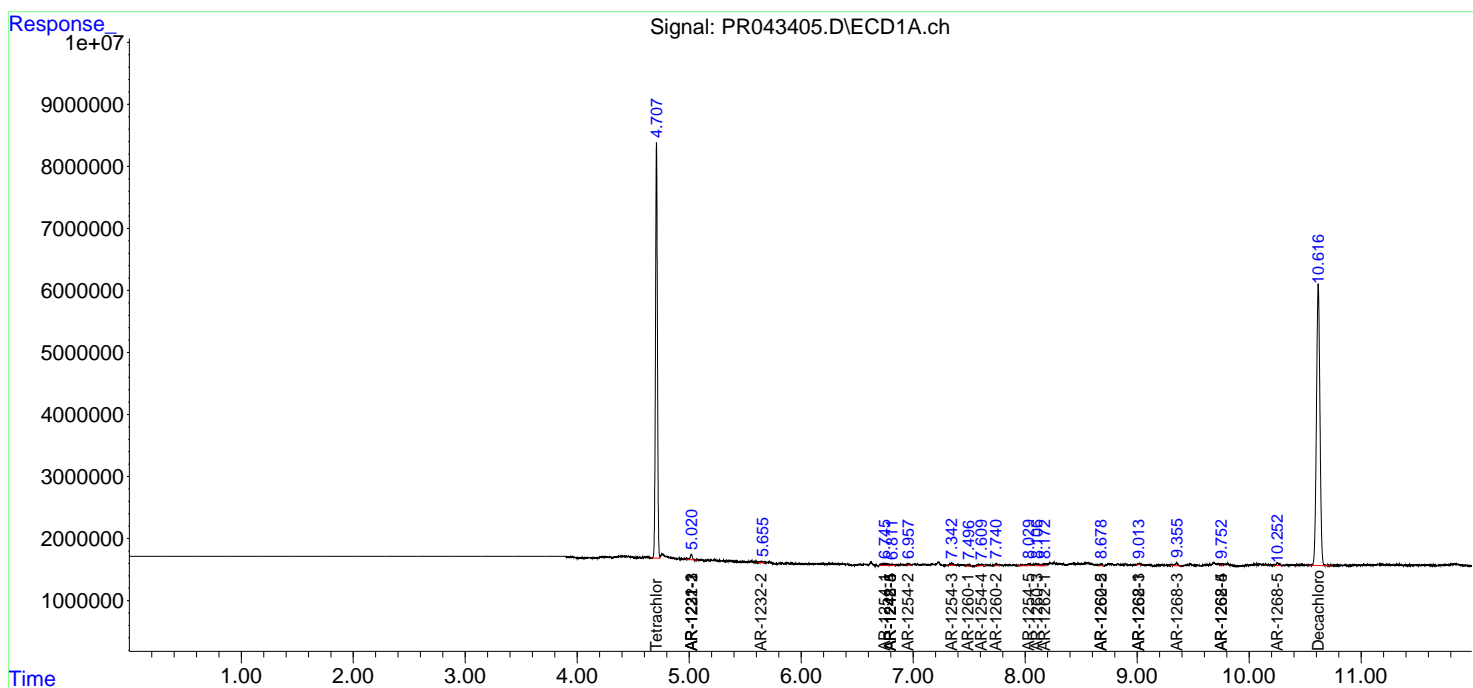
(f)=RT Delta > 1/2 Window (#)=Amounts differ by > 25% (m)=manual int.

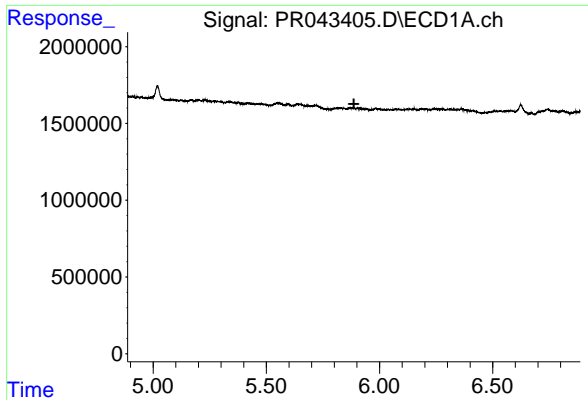
Data Path : Z:\pestpcbsrv\HPCHEM1\ECD\_R\Data\PR112119\  
 Data File : PR043405.D  
 Signal(s) : Signal #1: ECD1A.ch Signal #2: ECD2B.ch  
 Acq On : 22 Nov 2019 00:42  
 Operator : SM\AJ  
 Sample : K5915-14  
 Misc :  
 ALS Vial : 51 Sample Multiplier: 1

Instrument :  
 ECD\_R  
 ClientSampled :  
 JLNS2

Integration File signal 1: autoint1.e  
 Integration File signal 2: autoint2.e  
 Quant Time: Nov 22 03:08:24 2019  
 Quant Method : Z:\pestpcbsrv\HPCHEM1\ECD\_R\Method\PR110219CLP.M  
 Quant Title : GC EXTRACTABLES  
 QLast Update : Sat Nov 02 01:05:46 2019  
 Response via : Initial Calibration  
 Integrator: ChemStation

Volume Inj. : 1 µl  
 Signal #1 Phase : ZB MR1 Signal #2 Phase: ZB MR2  
 Signal #1 Info : 30Mx0.32mmx 0.5µm Signal #2 Info : 30M x 0.32mm x 0.25µm

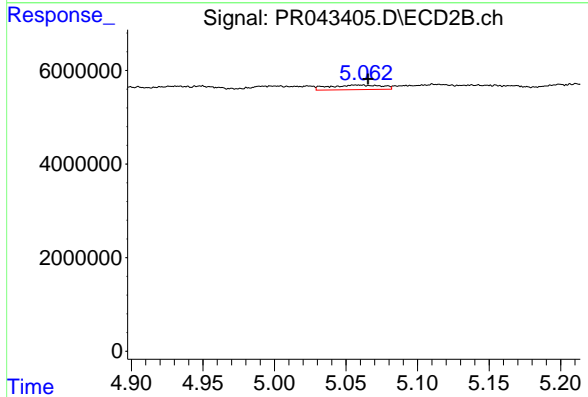




#3 AR-1016-1

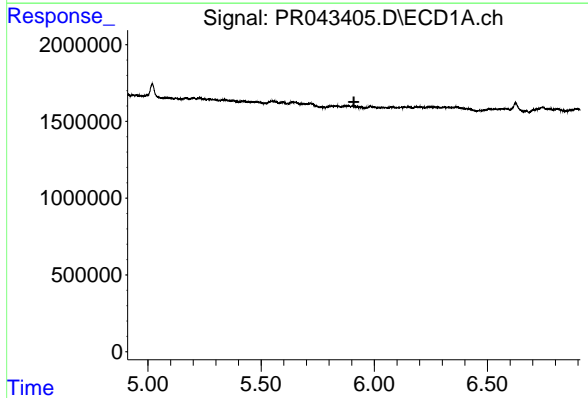
R.T.: 0.000 min  
 Exp R.T.: 5.887 min  
 Response: 0  
 Conc: N.D.

Instrument :  
 ECD\_R  
 ClientSampled :  
 JLNS2



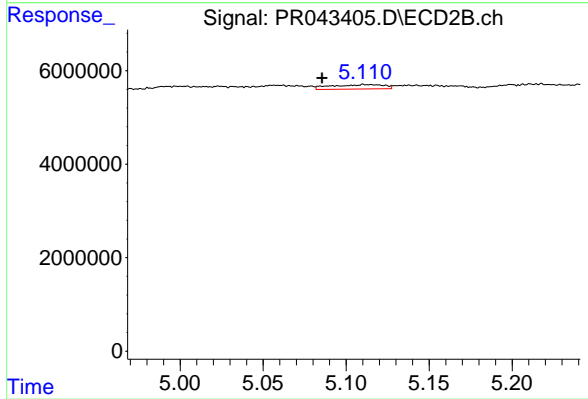
#3 AR-1016-1

R.T.: 5.057 min  
 Delta R.T.: -0.008 min  
 Response: 2528920  
 Conc: 4.26 ng/ml



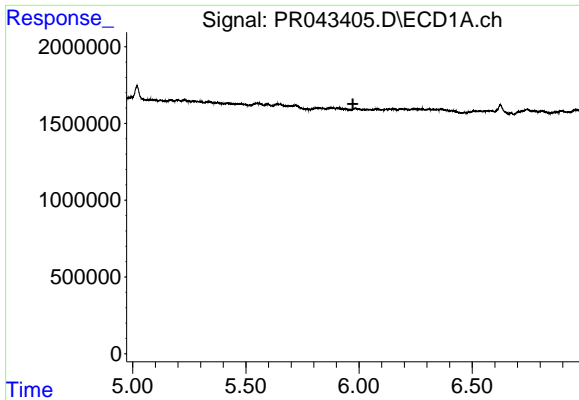
#4 AR-1016-2

R.T.: 0.000 min  
 Exp R.T.: 5.910 min  
 Response: 0  
 Conc: N.D.



#4 AR-1016-2

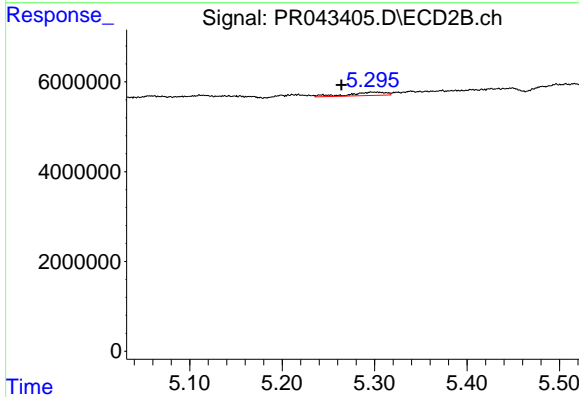
R.T.: 5.111 min  
 Delta R.T.: 0.026 min  
 Response: 2063507  
 Conc: 2.58 ng/ml



#5 AR-1016-3

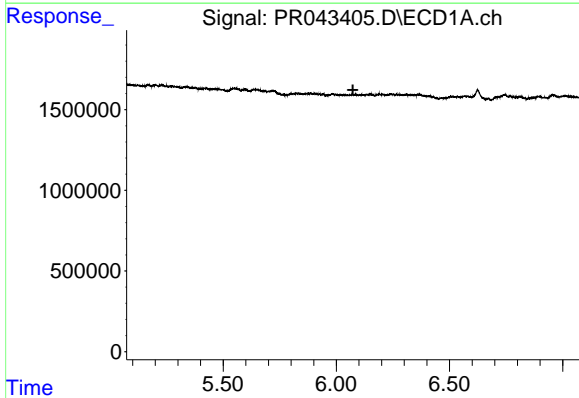
R.T.: 0.000 min  
 Exp R.T. : 5.973 min  
 Response: 0  
 Conc: N.D.

Instrument :  
 ECD\_R  
 ClientSampleId :  
 JLNS2



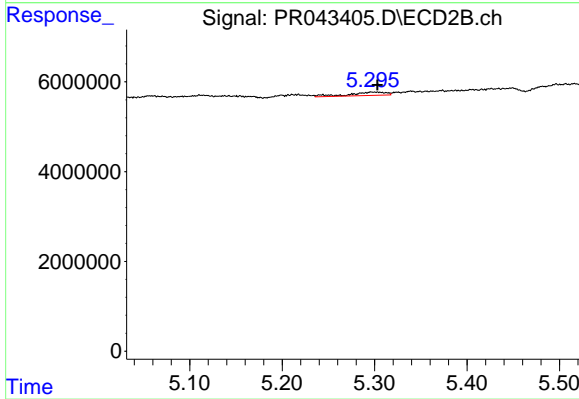
#5 AR-1016-3

R.T.: 5.297 min  
 Delta R.T.: 0.033 min  
 Response: 2066481  
 Conc: 5.44 ng/ml



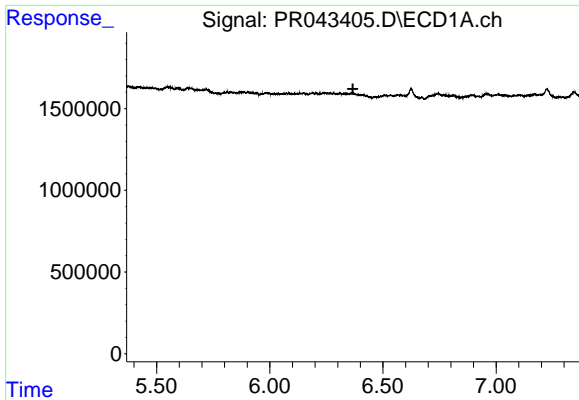
#6 AR-1016-4

R.T.: 0.000 min  
 Exp R.T. : 6.073 min  
 Response: 0  
 Conc: N.D.



#6 AR-1016-4

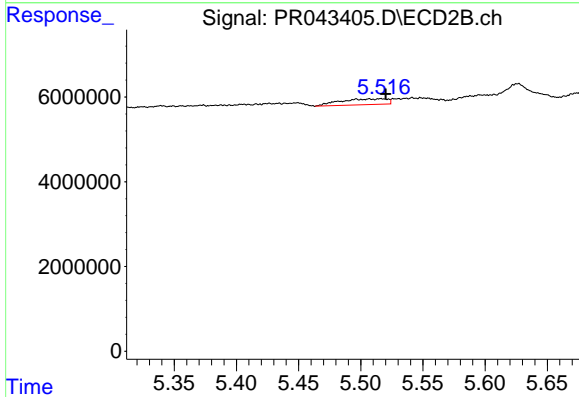
R.T.: 5.297 min  
 Delta R.T.: -0.007 min  
 Response: 2066481  
 Conc: 7.35 ng/ml



#7 AR-1016-5

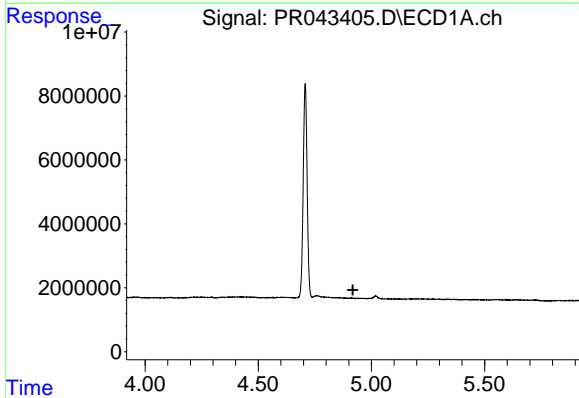
R.T.: 0.000 min  
 Exp R.T. : 6.367 min  
 Response: 0  
 Conc: N.D.

Instrument :  
 ECD\_R  
 ClientSampleId :  
 JLNS2



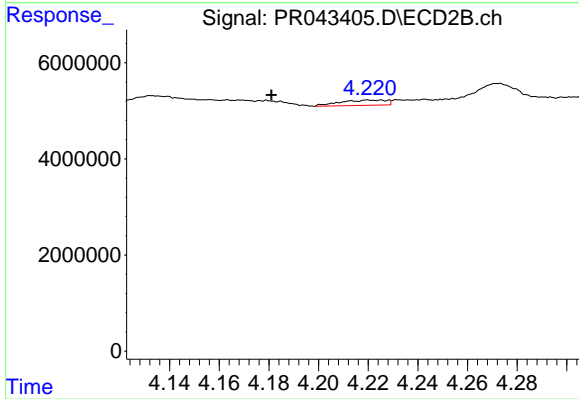
#7 AR-1016-5

R.T.: 5.516 min  
 Delta R.T.: -0.004 min  
 Response: 3558257  
 Conc: 11.22 ng/ml



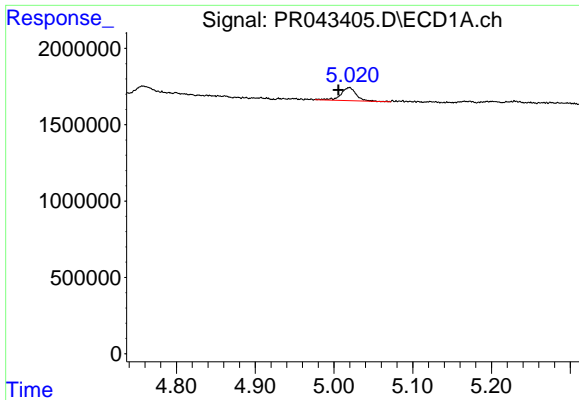
#8 AR-1221-1

R.T.: 0.000 min  
 Exp R.T. : 4.918 min  
 Response: 0  
 Conc: N.D.



#8 AR-1221-1

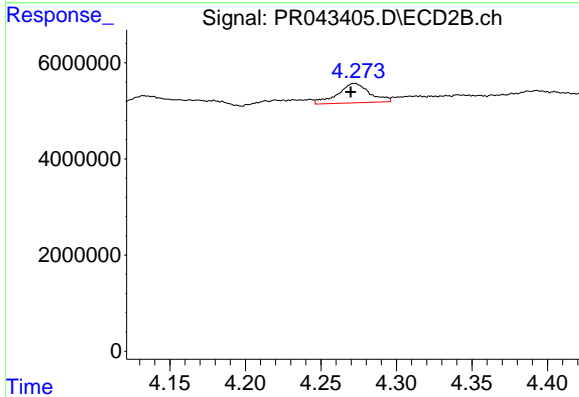
R.T.: 4.220 min  
 Delta R.T.: 0.039 min  
 Response: 1395622  
 Conc: 7.15 ng/ml



#9 AR-1221-2

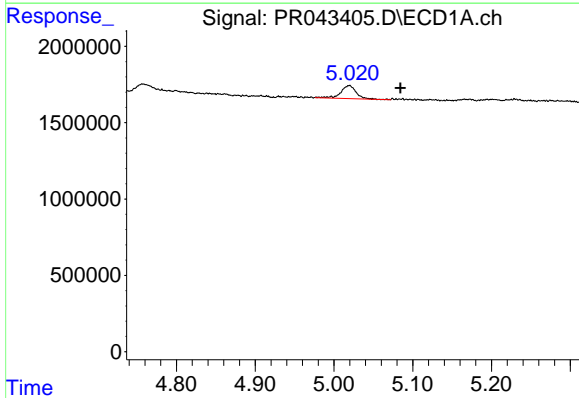
R.T.: 5.020 min  
 Delta R.T.: 0.014 min  
 Response: 1134994  
 Conc: 29.56 ng/ml

Instrument :  
 ECD\_R  
 ClientSampled :  
 JLNS2



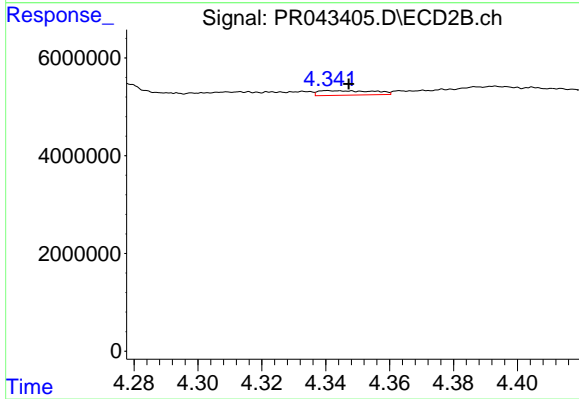
#9 AR-1221-2

R.T.: 4.273 min  
 Delta R.T.: 0.003 min  
 Response: 5962099  
 Conc: 44.44 ng/ml



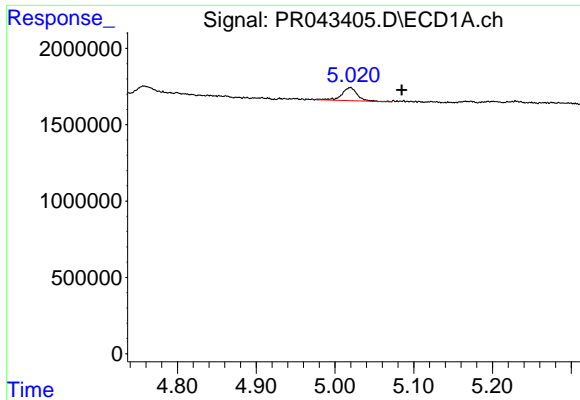
#10 AR-1221-3

R.T.: 5.020 min  
 Delta R.T.: -0.065 min  
 Response: 1134994  
 Conc: 8.90 ng/ml



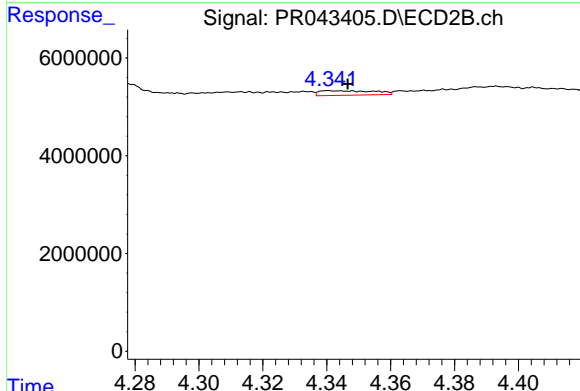
#10 AR-1221-3

R.T.: 4.341 min  
 Delta R.T.: -0.006 min  
 Response: 1112627  
 Conc: 2.44 ng/ml

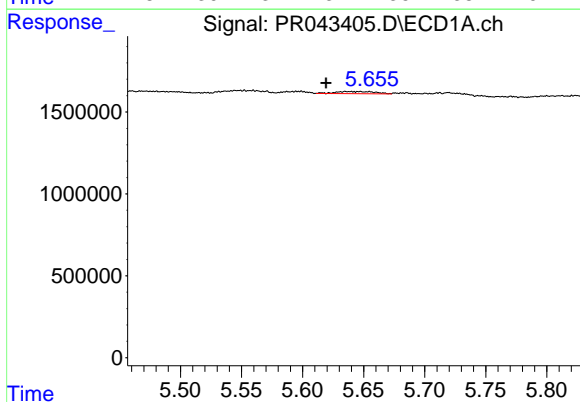


#11 AR-1232-1  
 R.T.: 5.020 min  
 Delta R.T.: -0.065 min  
 Response: 1134994  
 Conc: 10.28 ng/ml

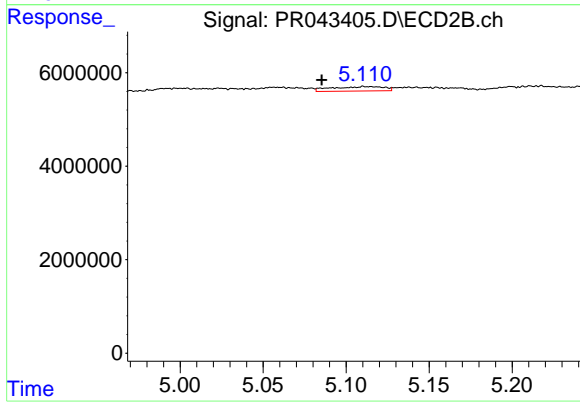
Instrument :  
 ECD\_R  
 ClientSampleId :  
 JLNS2



#11 AR-1232-1  
 R.T.: 4.341 min  
 Delta R.T.: -0.006 min  
 Response: 1112627  
 Conc: 2.82 ng/ml

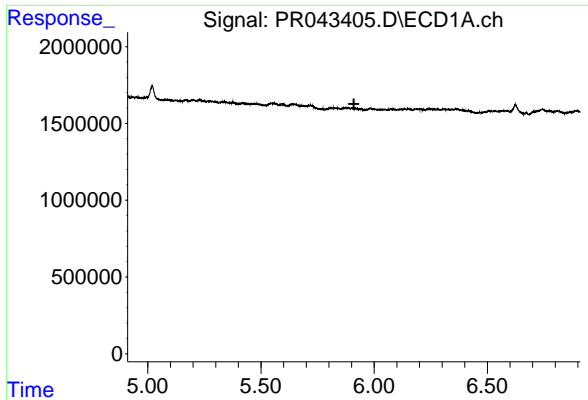


#12 AR-1232-2  
 R.T.: 5.640 min  
 Delta R.T.: 0.021 min  
 Response: 293604  
 Conc: 5.15 ng/ml



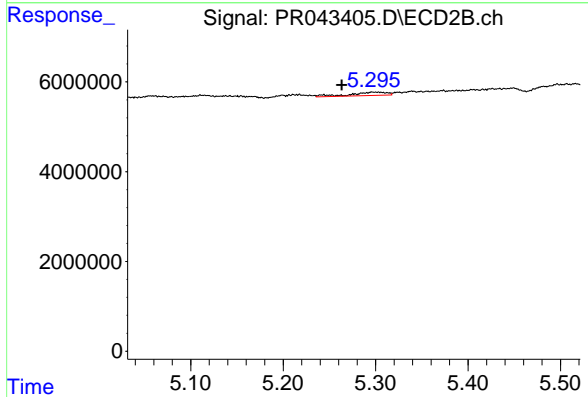
#12 AR-1232-2  
 R.T.: 5.111 min  
 Delta R.T.: 0.026 min  
 Response: 2063507  
 Conc: 5.60 ng/ml



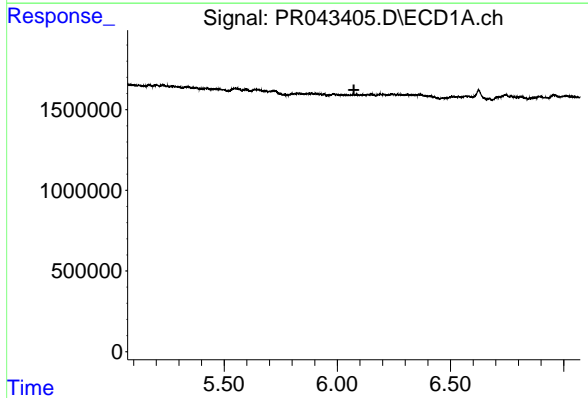


#13 AR-1232-3  
 R.T.: 0.000 min  
 Exp R.T. : 5.910 min  
 Response: 0  
 Conc: N.D.

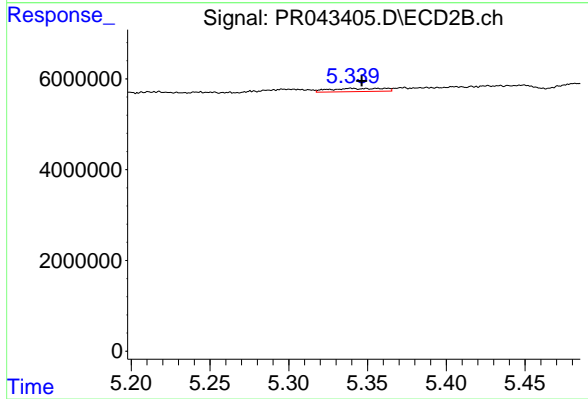
Instrument :  
 ECD\_R  
 ClientSampleId :  
 JLNS2



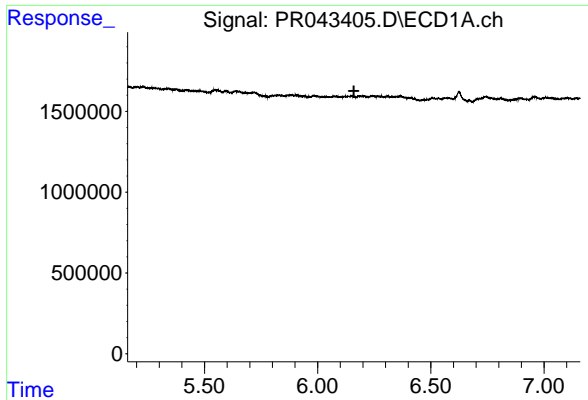
#13 AR-1232-3  
 R.T.: 5.297 min  
 Delta R.T.: 0.033 min  
 Response: 2066481  
 Conc: 11.96 ng/ml



#14 AR-1232-4  
 R.T.: 0.000 min  
 Exp R.T. : 6.073 min  
 Response: 0  
 Conc: N.D.



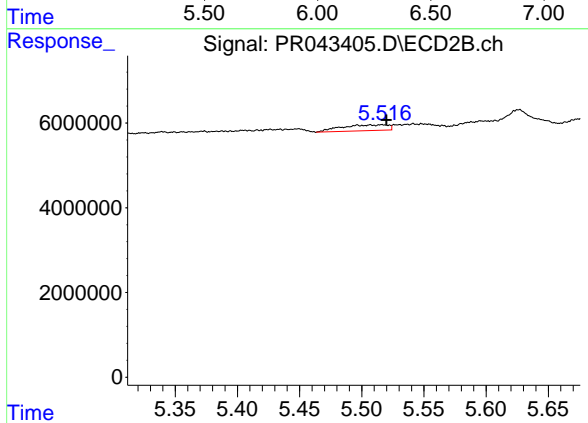
#14 AR-1232-4  
 R.T.: 5.339 min  
 Delta R.T.: -0.007 min  
 Response: 1657604  
 Conc: 12.40 ng/ml



#15 AR-1232-5

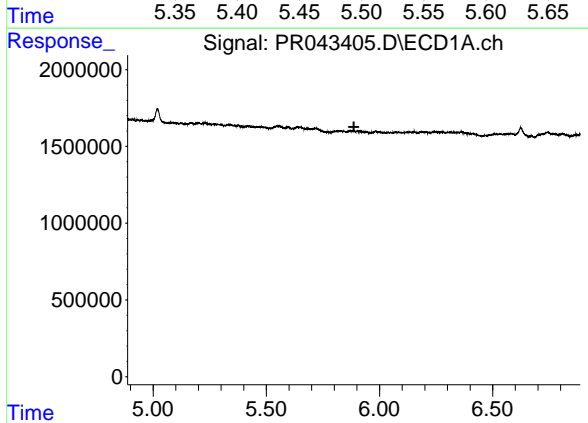
R.T.: 0.000 min  
 Exp R.T. : 6.160 min  
 Response: 0  
 Conc: N.D.

Instrument :  
 ECD\_R  
 ClientSampleId :  
 JLNS2



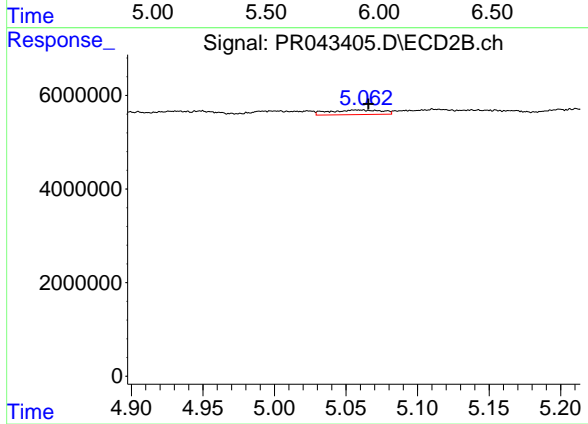
#15 AR-1232-5

R.T.: 5.516 min  
 Delta R.T.: -0.004 min  
 Response: 3558257  
 Conc: 26.11 ng/ml



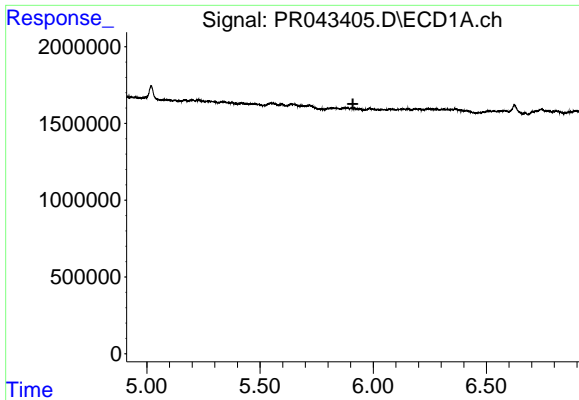
#16 AR-1242-1

R.T.: 0.000 min  
 Exp R.T. : 5.887 min  
 Response: 0  
 Conc: N.D.



#16 AR-1242-1

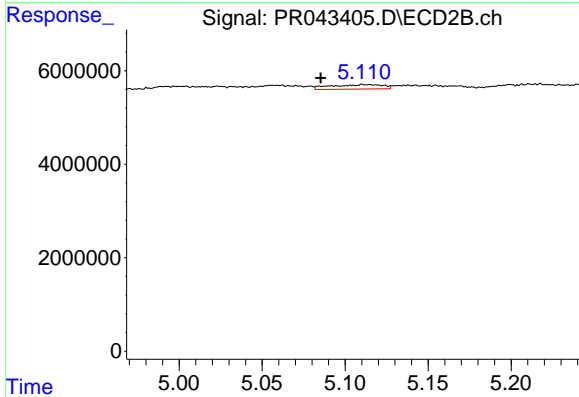
R.T.: 5.057 min  
 Delta R.T.: -0.009 min  
 Response: 2528920  
 Conc: 5.52 ng/ml



#17 AR-1242-2

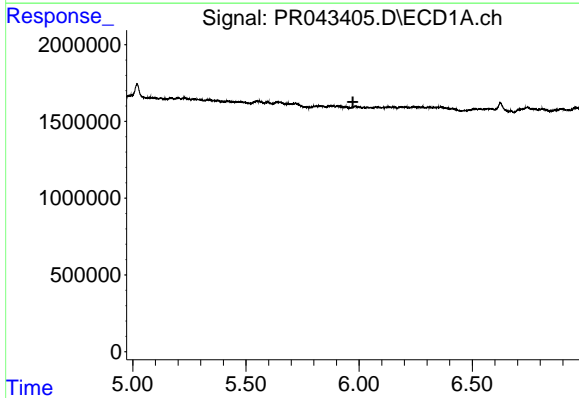
R.T.: 0.000 min  
 Exp R.T. : 5.910 min  
 Response: 0  
 Conc: N.D.

Instrument :  
 ECD\_R  
 ClientSampled :  
 JLNS2



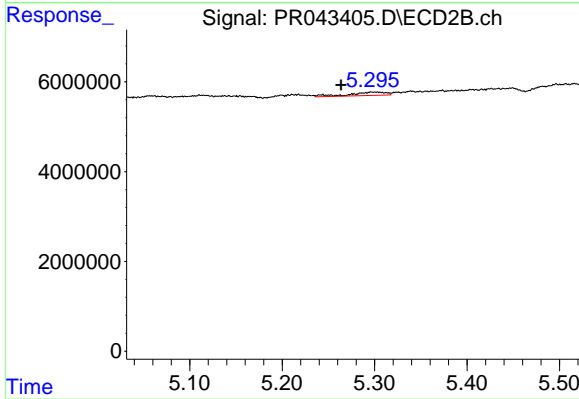
#17 AR-1242-2

R.T.: 5.111 min  
 Delta R.T.: 0.026 min  
 Response: 2063507  
 Conc: 3.37 ng/ml



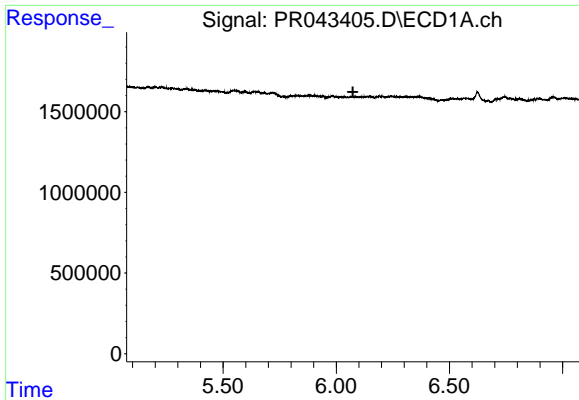
#18 AR-1242-3

R.T.: 0.000 min  
 Exp R.T. : 5.973 min  
 Response: 0  
 Conc: N.D.



#18 AR-1242-3

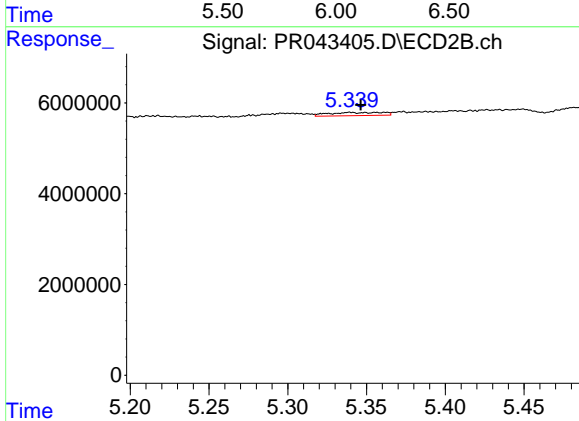
R.T.: 5.297 min  
 Delta R.T.: 0.033 min  
 Response: 2066481  
 Conc: 7.08 ng/ml



#19 AR-1242-4

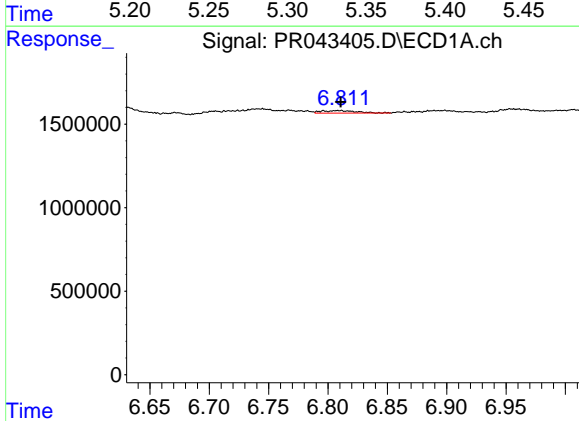
R.T.: 0.000 min  
 Exp R.T.: 6.074 min  
 Response: 0  
 Conc: N.D.

Instrument :  
 ECD\_R  
 ClientSampleId :  
 JLNS2



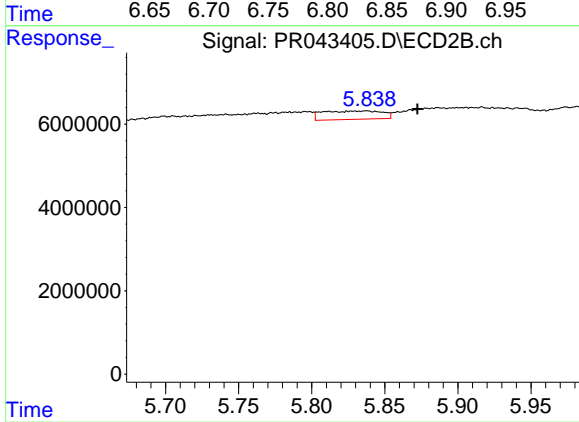
#19 AR-1242-4

R.T.: 5.339 min  
 Delta R.T.: -0.007 min  
 Response: 1657604  
 Conc: 6.58 ng/ml



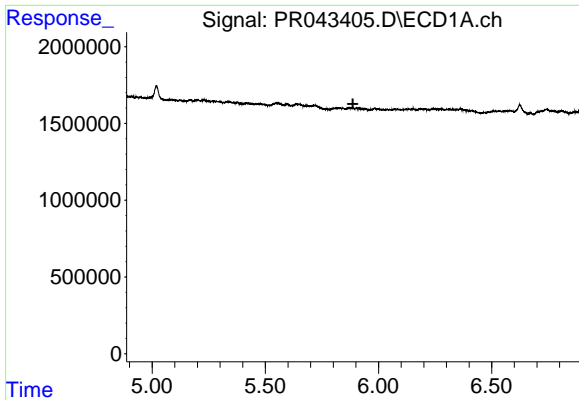
#20 AR-1242-5

R.T.: 6.797 min  
 Delta R.T.: -0.014 min  
 Response: 305686  
 Conc: 2.83 ng/ml



#20 AR-1242-5

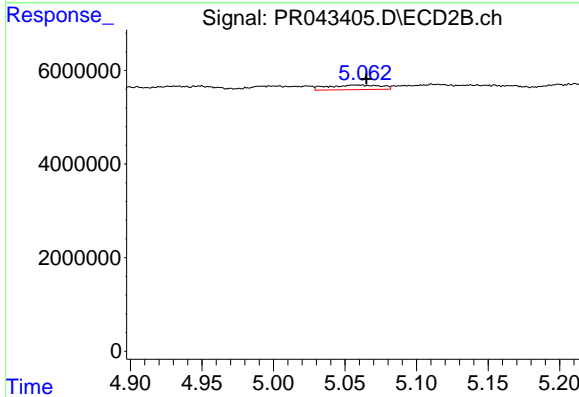
R.T.: 5.837 min  
 Delta R.T.: -0.035 min  
 Response: 5752827  
 Conc: 19.36 ng/ml



#21 AR-1248-1

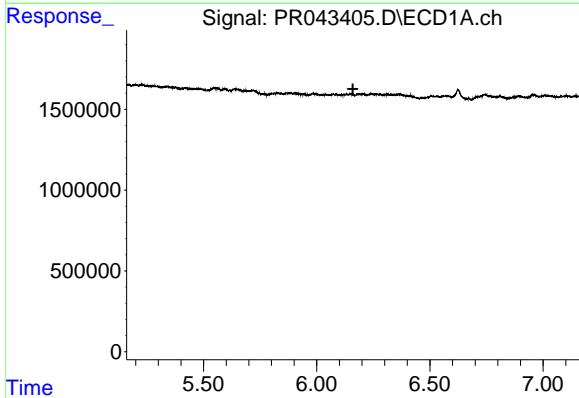
R.T.: 0.000 min  
 Exp R.T.: 5.887 min  
 Response: 0  
 Conc: N.D.

Instrument :  
 ECD\_R  
 ClientSampleId :  
 JLNS2



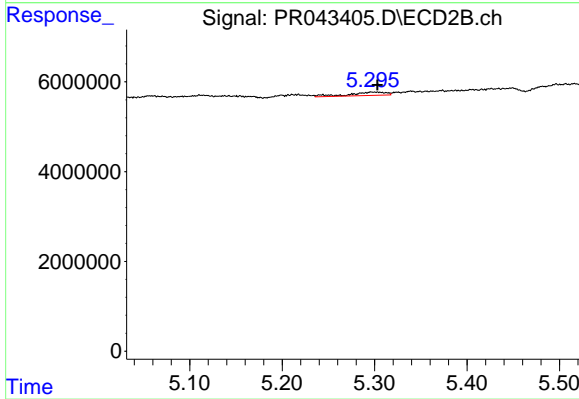
#21 AR-1248-1

R.T.: 5.057 min  
 Delta R.T.: -0.008 min  
 Response: 2528920  
 Conc: 6.79 ng/ml



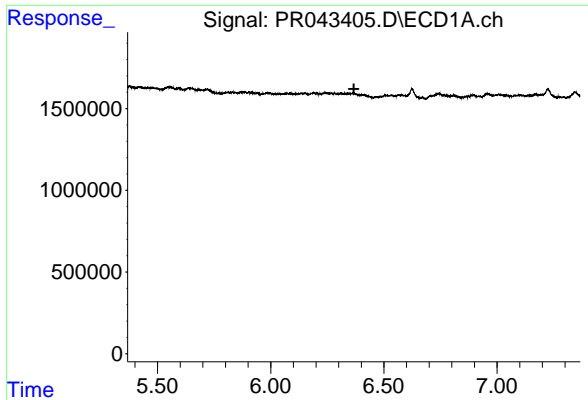
#22 AR-1248-2

R.T.: 0.000 min  
 Exp R.T.: 6.160 min  
 Response: 0  
 Conc: N.D.



#22 AR-1248-2

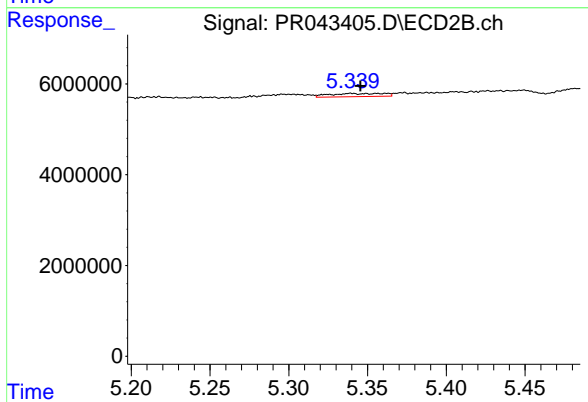
R.T.: 5.297 min  
 Delta R.T.: -0.006 min  
 Response: 2066481  
 Conc: 5.38 ng/ml



#23 AR-1248-3

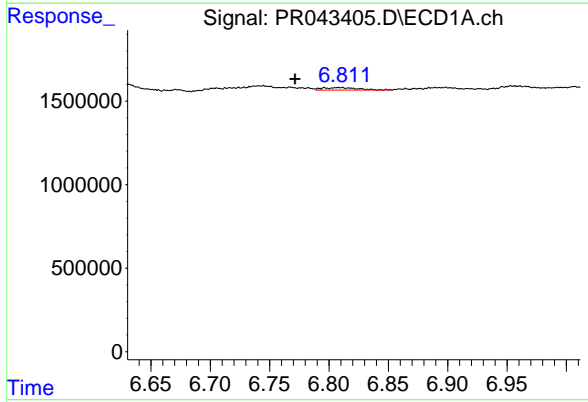
R.T.: 0.000 min  
 Exp R.T.: 6.367 min  
 Response: 0  
 Conc: N.D.

Instrument :  
 ECD\_R  
 ClientSampleId :  
 JLNS2



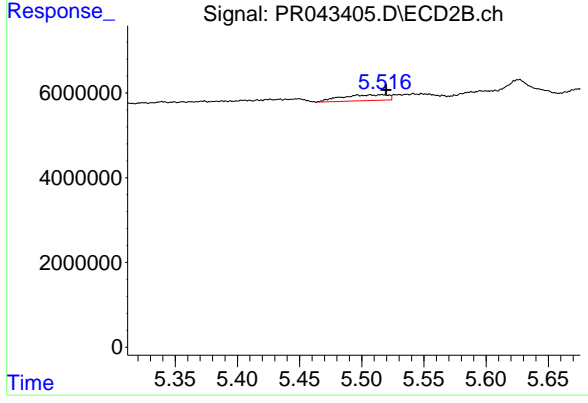
#23 AR-1248-3

R.T.: 5.339 min  
 Delta R.T.: -0.006 min  
 Response: 1657604  
 Conc: 4.38 ng/ml



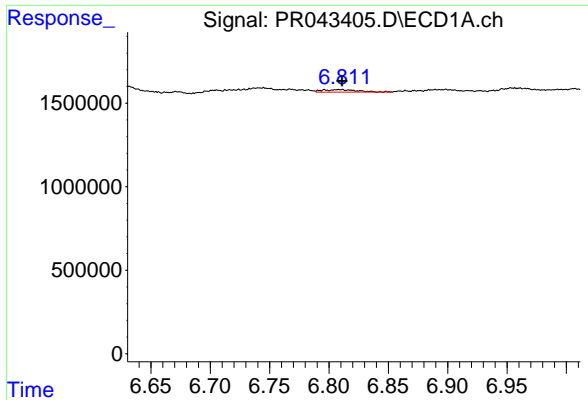
#24 AR-1248-4

R.T.: 6.797 min  
 Delta R.T.: 0.025 min  
 Response: 305686  
 Conc: 1.54 ng/ml



#24 AR-1248-4

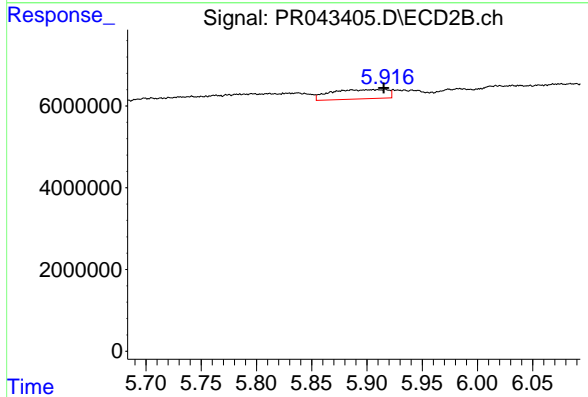
R.T.: 5.516 min  
 Delta R.T.: -0.003 min  
 Response: 3558257  
 Conc: 8.54 ng/ml



#25 AR-1248-5

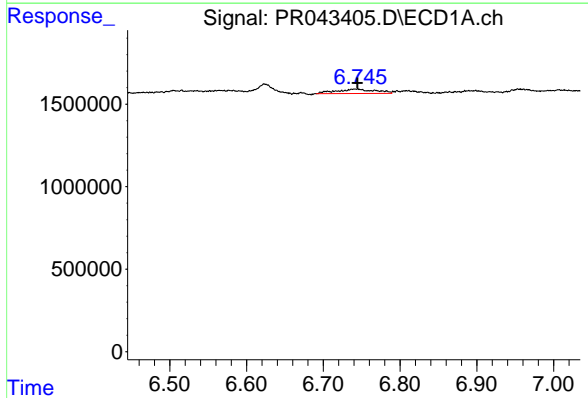
R.T.: 6.797 min  
 Delta R.T.: -0.015 min  
 Response: 305686  
 Conc: 1.64 ng/ml

Instrument :  
 ECD\_R  
 ClientSampleId :  
 JLNS2



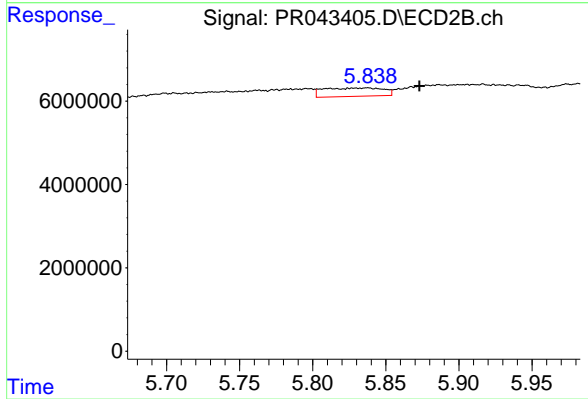
#25 AR-1248-5

R.T.: 5.916 min  
 Delta R.T.: 0.001 min  
 Response: 8155726  
 Conc: 18.51 ng/ml



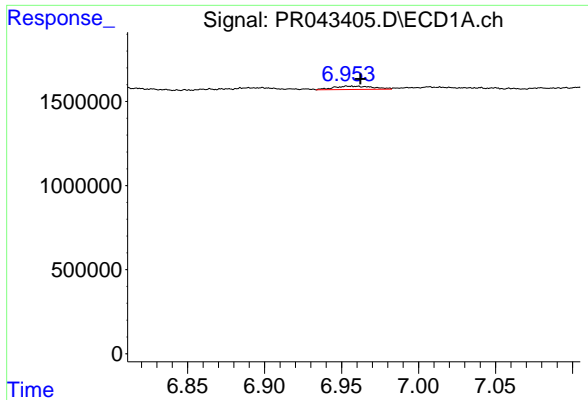
#26 AR-1254-1

R.T.: 6.745 min  
 Delta R.T.: 0.000 min  
 Response: 921967  
 Conc: 4.79 ng/ml



#26 AR-1254-1

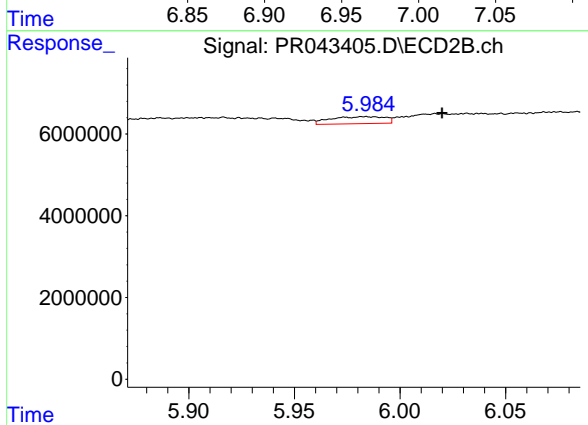
R.T.: 5.837 min  
 Delta R.T.: -0.036 min  
 Response: 5752827  
 Conc: 9.21 ng/ml



#27 AR-1254-2

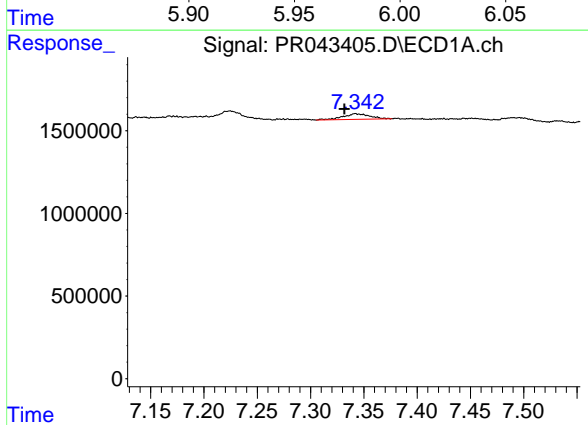
R.T.: 6.954 min  
 Delta R.T.: -0.008 min  
 Response: 361139  
 Conc: 1.22 ng/ml

Instrument :  
 ECD\_R  
 ClientSampled :  
 JLNS2



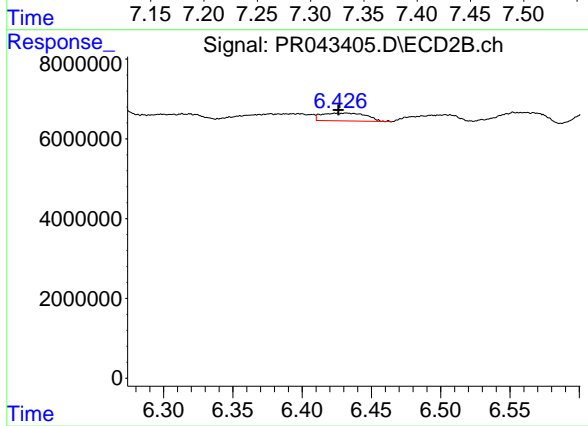
#27 AR-1254-2

R.T.: 5.983 min  
 Delta R.T.: -0.037 min  
 Response: 3090434  
 Conc: 5.50 ng/ml



#28 AR-1254-3

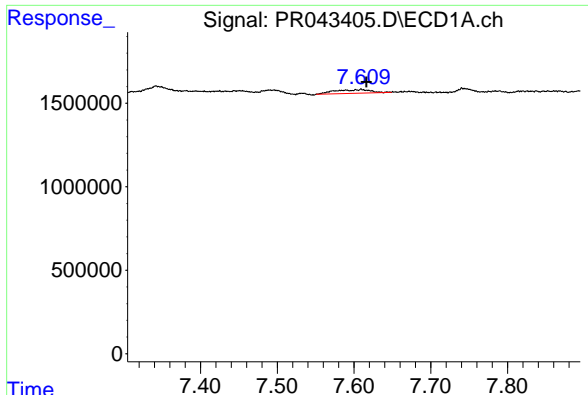
R.T.: 7.342 min  
 Delta R.T.: 0.011 min  
 Response: 603803  
 Conc: 1.96 ng/ml



#28 AR-1254-3

R.T.: 6.432 min  
 Delta R.T.: 0.006 min  
 Response: 4404654  
 Conc: 4.51 ng/ml

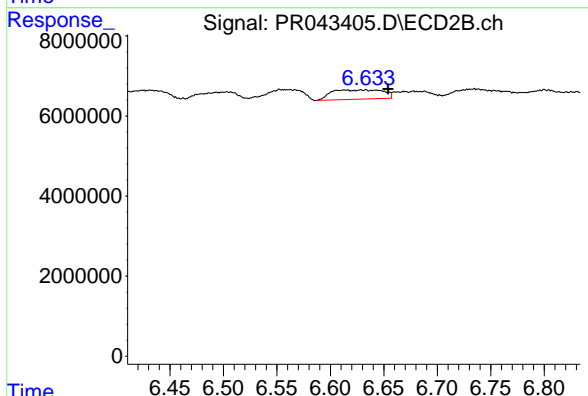




#29 AR-1254-4

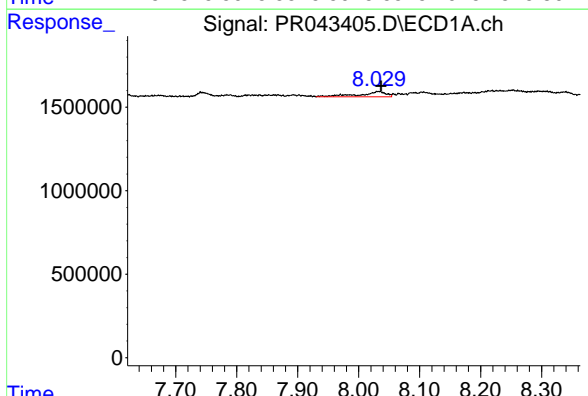
R.T.: 7.609 min  
 Delta R.T.: -0.007 min  
 Response: 711541  
 Conc: 3.15 ng/ml

Instrument :  
 ECD\_R  
 ClientSampleId :  
 JLNS2



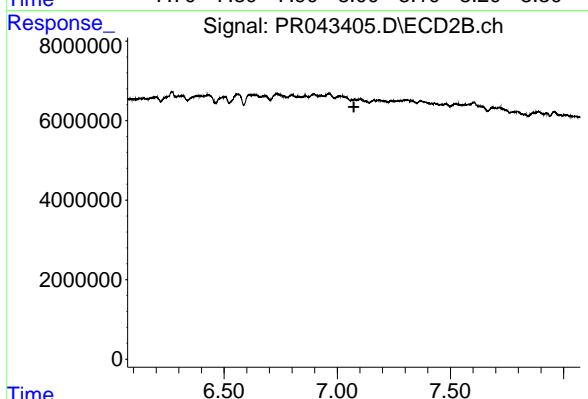
#29 AR-1254-4

R.T.: 6.630 min  
 Delta R.T.: -0.024 min  
 Response: 7889791  
 Conc: 11.04 ng/ml



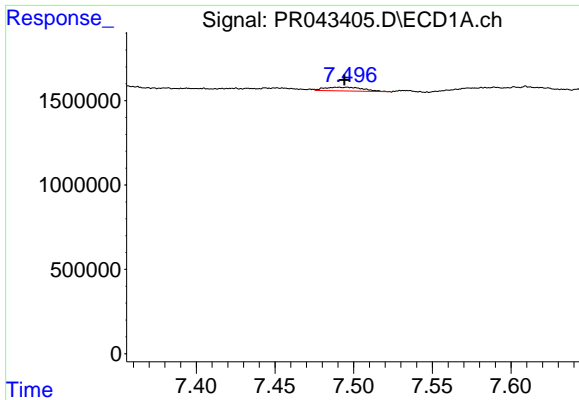
#30 AR-1254-5

R.T.: 8.033 min  
 Delta R.T.: -0.004 min  
 Response: 968728  
 Conc: 4.15 ng/ml



#30 AR-1254-5

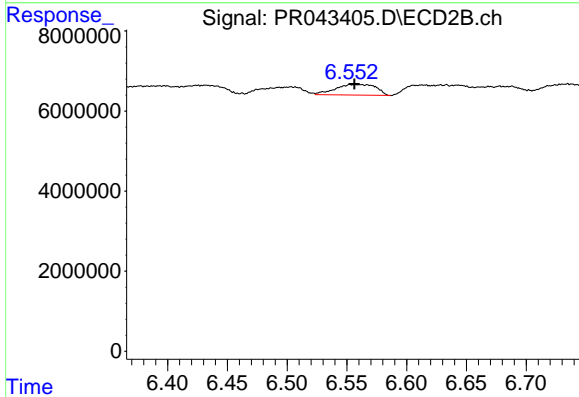
R.T.: 0.000 min  
 Exp R.T.: 7.074 min  
 Response: 0  
 Conc: N.D.



#31 AR-1260-1

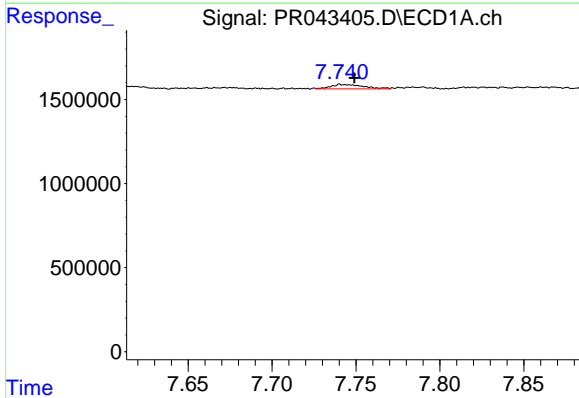
R.T.: 7.496 min  
 Delta R.T.: 0.002 min  
 Response: 386615  
 Conc: 1.72 ng/ml

**Instrument :**  
 ECD\_R  
**ClientSampleId :**  
 JLNS2



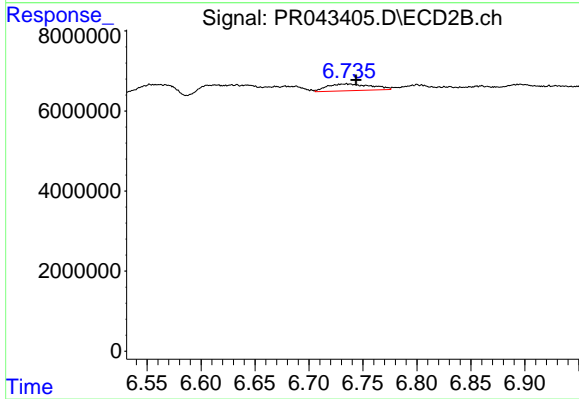
#31 AR-1260-1

R.T.: 6.553 min  
 Delta R.T.: -0.003 min  
 Response: 6297217  
 Conc: 9.61 ng/ml



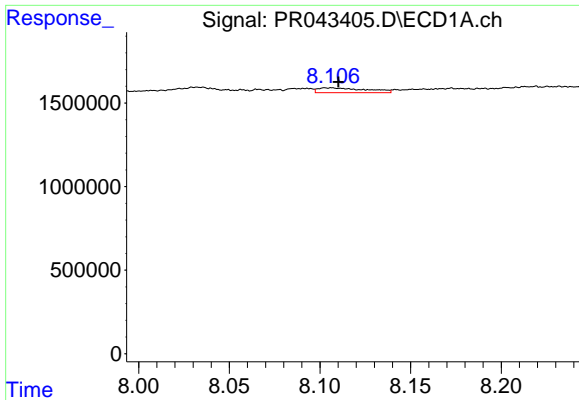
#32 AR-1260-2

R.T.: 7.741 min  
 Delta R.T.: -0.008 min  
 Response: 357909  
 Conc: 1.35 ng/ml



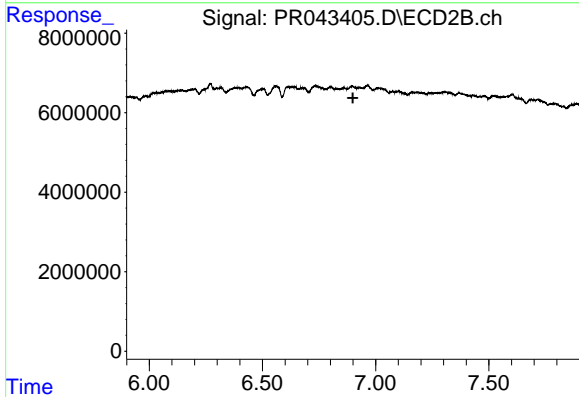
#32 AR-1260-2

R.T.: 6.735 min  
 Delta R.T.: -0.009 min  
 Response: 4738372  
 Conc: 5.19 ng/ml

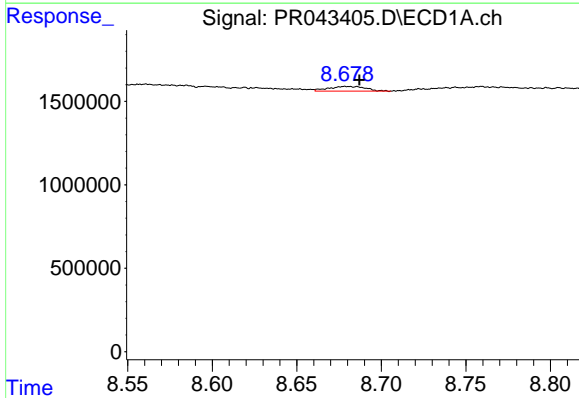


#33 AR-1260-3  
 R.T.: 8.106 min  
 Delta R.T.: -0.004 min  
 Response: 529829  
 Conc: 2.67 ng/ml

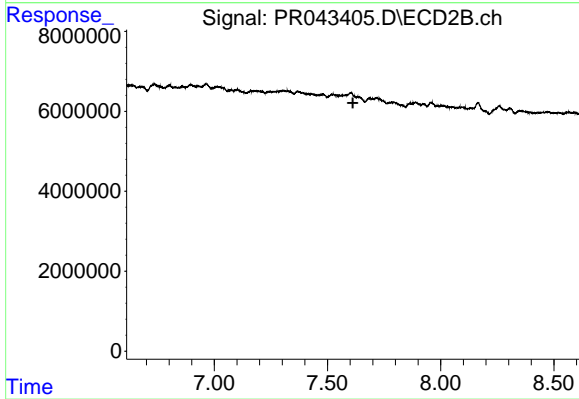
Instrument :  
 ECD\_R  
 ClientSampled :  
 JLNS2



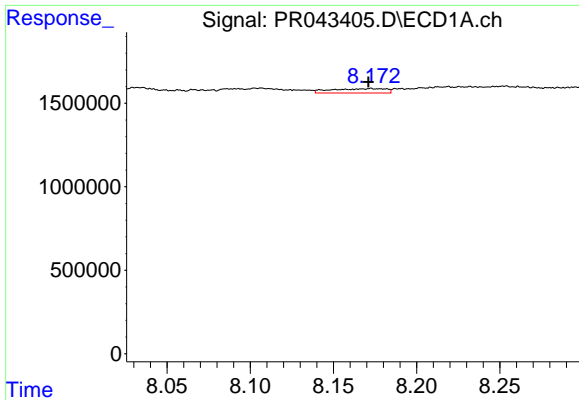
#33 AR-1260-3  
 R.T.: 0.000 min  
 Exp R.T. : 6.900 min  
 Response: 0  
 Conc: N.D.



#35 AR-1260-5  
 R.T.: 8.680 min  
 Delta R.T.: -0.007 min  
 Response: 439171  
 Conc: 0.96 ng/ml



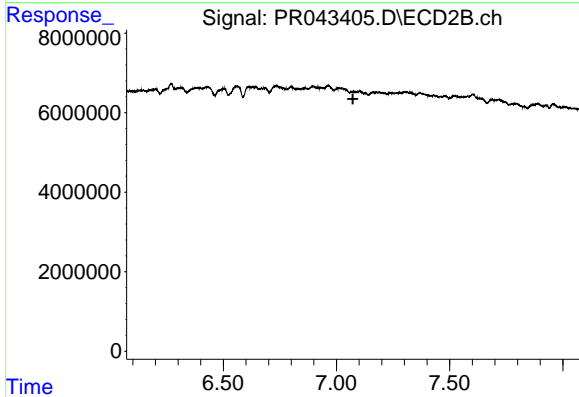
#35 AR-1260-5  
 R.T.: 0.000 min  
 Exp R.T. : 7.612 min  
 Response: 0  
 Conc: N.D.



#36 AR-1262-1

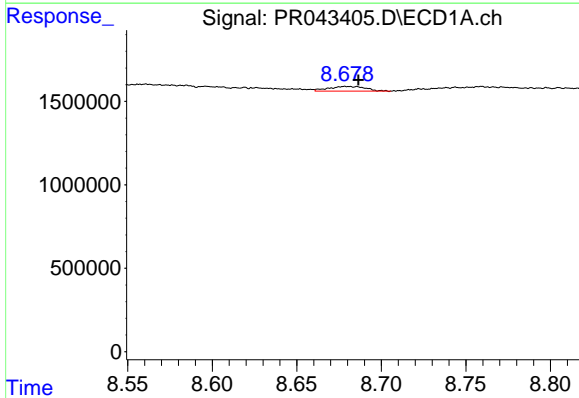
R.T.: 8.173 min  
 Delta R.T.: 0.002 min  
 Response: 580038  
 Conc: 5.08 ng/ml

Instrument :  
 ECD\_R  
 ClientSampleId :  
 JLNS2



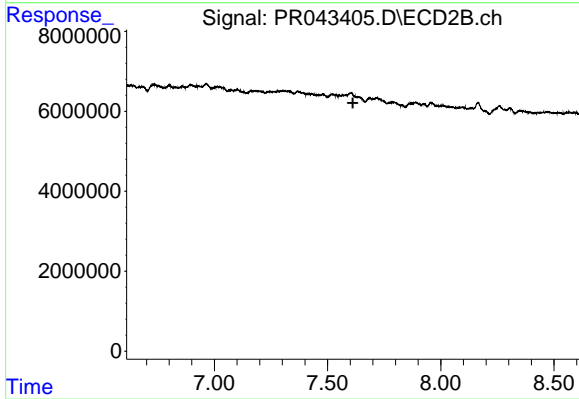
#36 AR-1262-1

R.T.: 0.000 min  
 Exp R.T. : 7.072 min  
 Response: 0  
 Conc: N.D.



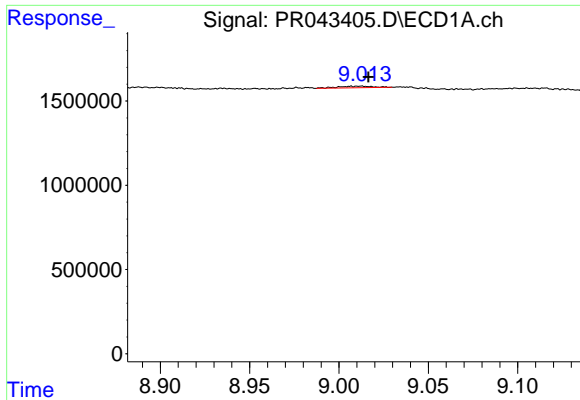
#37 AR-1262-2

R.T.: 8.680 min  
 Delta R.T.: -0.007 min  
 Response: 439171  
 Conc: 0.84 ng/ml



#37 AR-1262-2

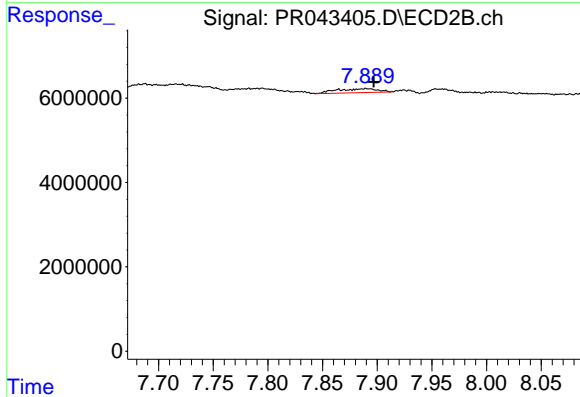
R.T.: 0.000 min  
 Exp R.T. : 7.612 min  
 Response: 0  
 Conc: N.D.



#38 AR-1262-3

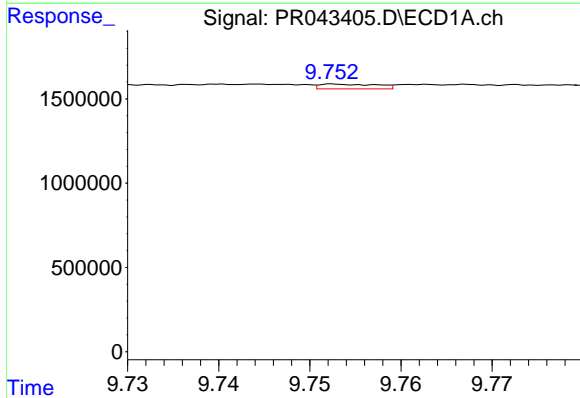
R.T.: 9.012 min  
 Delta R.T.: -0.004 min  
 Response: 128616  
 Conc: 0.39 ng/ml

Instrument :  
 ECD\_R  
 ClientSampleId :  
 JLNS2



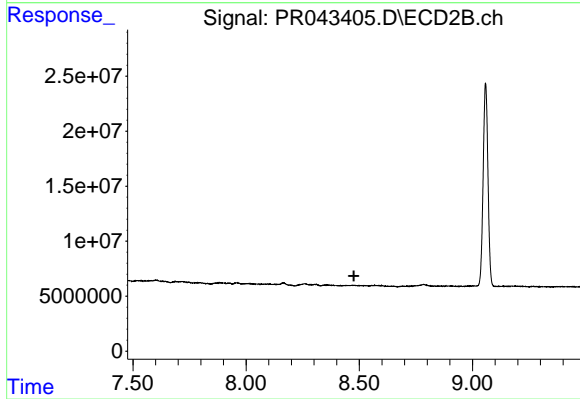
#38 AR-1262-3

R.T.: 7.890 min  
 Delta R.T.: -0.007 min  
 Response: 2427045  
 Conc: 3.27 ng/ml



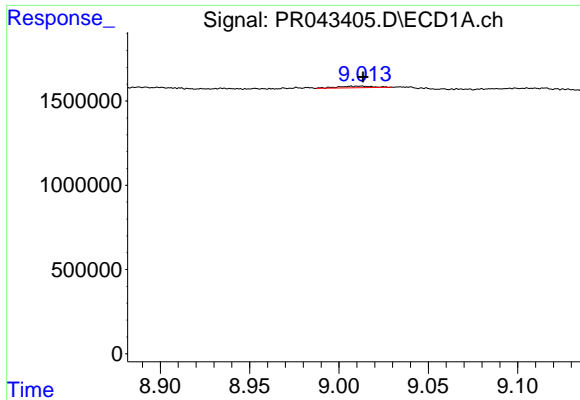
#40 AR-1262-5

R.T.: 9.753 min  
 Delta R.T.: -0.064 min  
 Response: 126883  
 Conc: 0.75 ng/ml



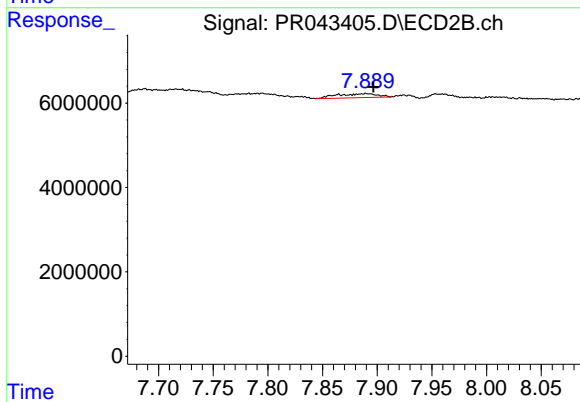
#40 AR-1262-5

R.T.: 0.000 min  
 Exp R.T. : 8.476 min  
 Response: 0  
 Conc: N.D.

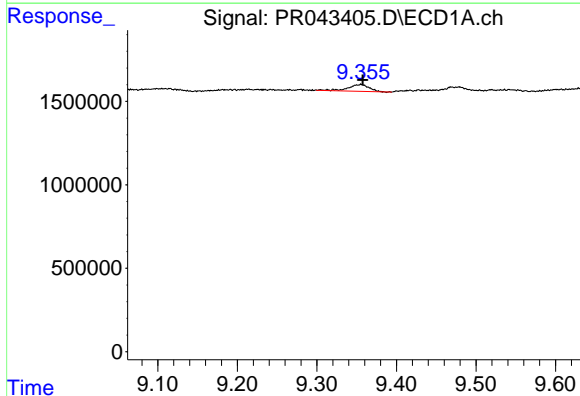


#41 AR-1268-1  
 R.T.: 9.012 min  
 Delta R.T.: -0.001 min  
 Response: 128616  
 Conc: 0.22 ng/ml

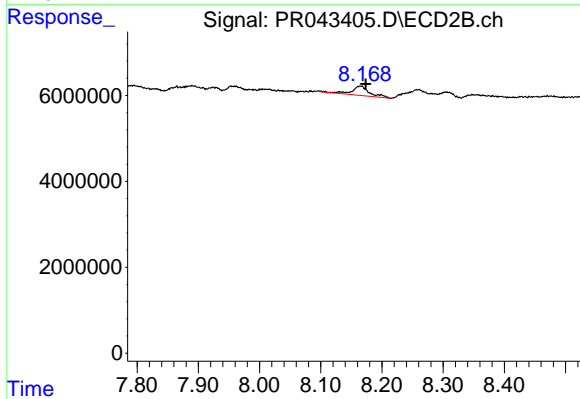
Instrument :  
 ECD\_R  
 ClientSampleId :  
 JLNS2



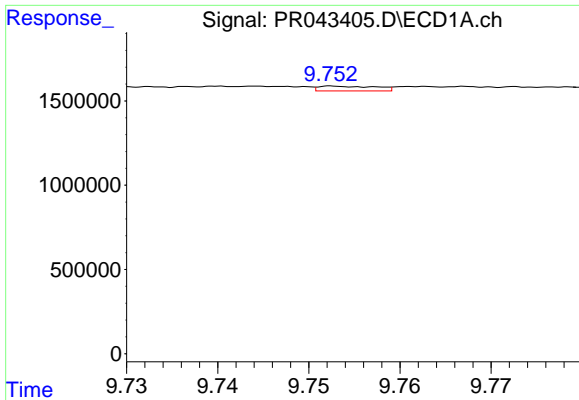
#41 AR-1268-1  
 R.T.: 7.890 min  
 Delta R.T.: -0.006 min  
 Response: 2427045  
 Conc: 1.10 ng/ml



#43 AR-1268-3  
 R.T.: 9.356 min  
 Delta R.T.: -0.002 min  
 Response: 729479  
 Conc: 1.69 ng/ml



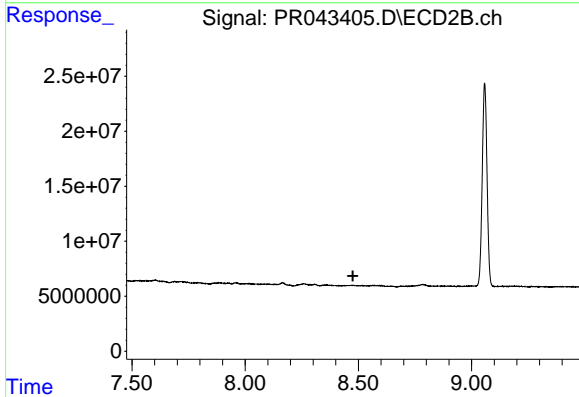
#43 AR-1268-3  
 R.T.: 8.165 min  
 Delta R.T.: -0.009 min  
 Response: 4467373  
 Conc: 2.69 ng/ml



#44 AR-1268-4

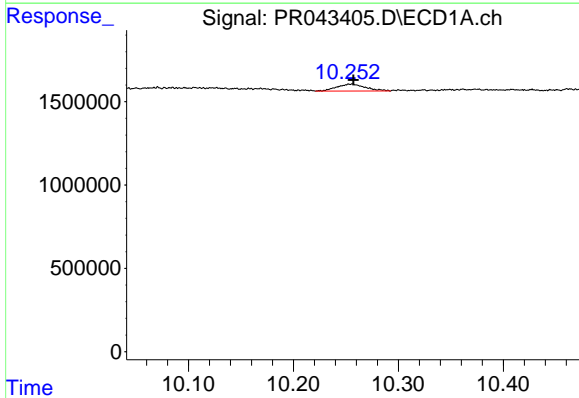
R.T.: 9.753 min  
 Delta R.T.: -0.062 min  
 Response: 126883  
 Conc: 0.67 ng/ml

Instrument :  
 ECD\_R  
 ClientSampled :  
 JLNS2



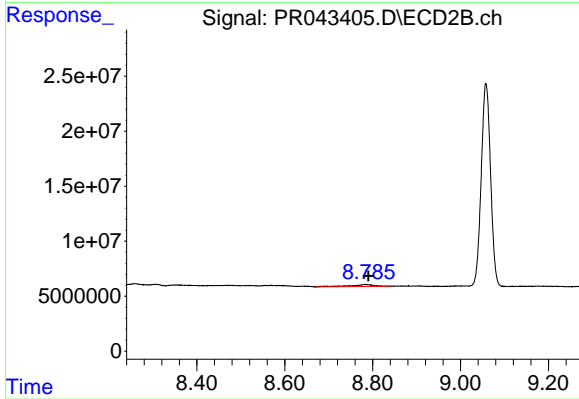
#44 AR-1268-4

R.T.: 0.000 min  
 Exp R.T. : 8.476 min  
 Response: 0  
 Conc: N.D.



#45 AR-1268-5

R.T.: 10.255 min  
 Delta R.T.: -0.002 min  
 Response: 801093  
 Conc: 0.57 ng/ml



#45 AR-1268-5

R.T.: 8.785 min  
 Delta R.T.: -0.006 min  
 Response: 6509384  
 Conc: 1.38 ng/ml