

Data Path : Z:\pestpcbsrv\HPCHEM1\ECD_R\Data\PR112124\
 Data File : PR069331.D
 Signal(s) : Signal #1: ECD1A.ch Signal #2: ECD2B.ch
 Acq On : 22 Nov 2024 01:32
 Operator : AJ\MA
 Sample : AR1268ICC800
 Misc :
 ALS Vial : 41 Sample Multiplier: 1

Instrument :
 ECD_R
 ClientSampleId :

Integration File signal 1: autoint1.e
 Integration File signal 2: autoint2.e
 Quant Time: Nov 22 04:09:17 2024
 Quant Method : Z:\pestpcbsrv\HPCHEM1\ECD_R\Method\PR112124CLP.M
 Quant Title : GC EXTRACTABLES
 QLast Update : Fri Nov 22 04:07:50 2024
 Response via : Initial Calibration
 Integrator: ChemStation

Volume Inj. : 1 µl
 Signal #1 Phase : ZB MR1 Signal #2 Phase: ZB MR2
 Signal #1 Info : 30Mx0.32mmx 0.5µm Signal #2 Info : 30M x 0.32mm x 0.25µm

Compound	RT#1	RT#2	Resp#1	Resp#2	ng/ml	ng/ml

System Monitoring Compounds						
1) SA Tetrachlo...	3.637	2.969	40178638	251.3E6	39.627	39.052
2) SA Decachlor...	9.530	8.253	78221481	572.7E6	75.532	77.337
Target Compounds						
41) L9 AR-1268-1	8.131	7.102	77994135	565.5E6	769.752	772.567
42) L9 AR-1268-2	8.222	7.172	71384751	533.8E6	777.709	783.671
43) L9 AR-1268-3	8.437	7.393	58599127	447.0E6	764.895	782.652
44) L9 AR-1268-4	8.842	7.708	25704378	193.3E6	772.621	778.055
45) L9 AR-1268-5	9.224	8.005	186.9E6	1435.3E6	779.678	777.503

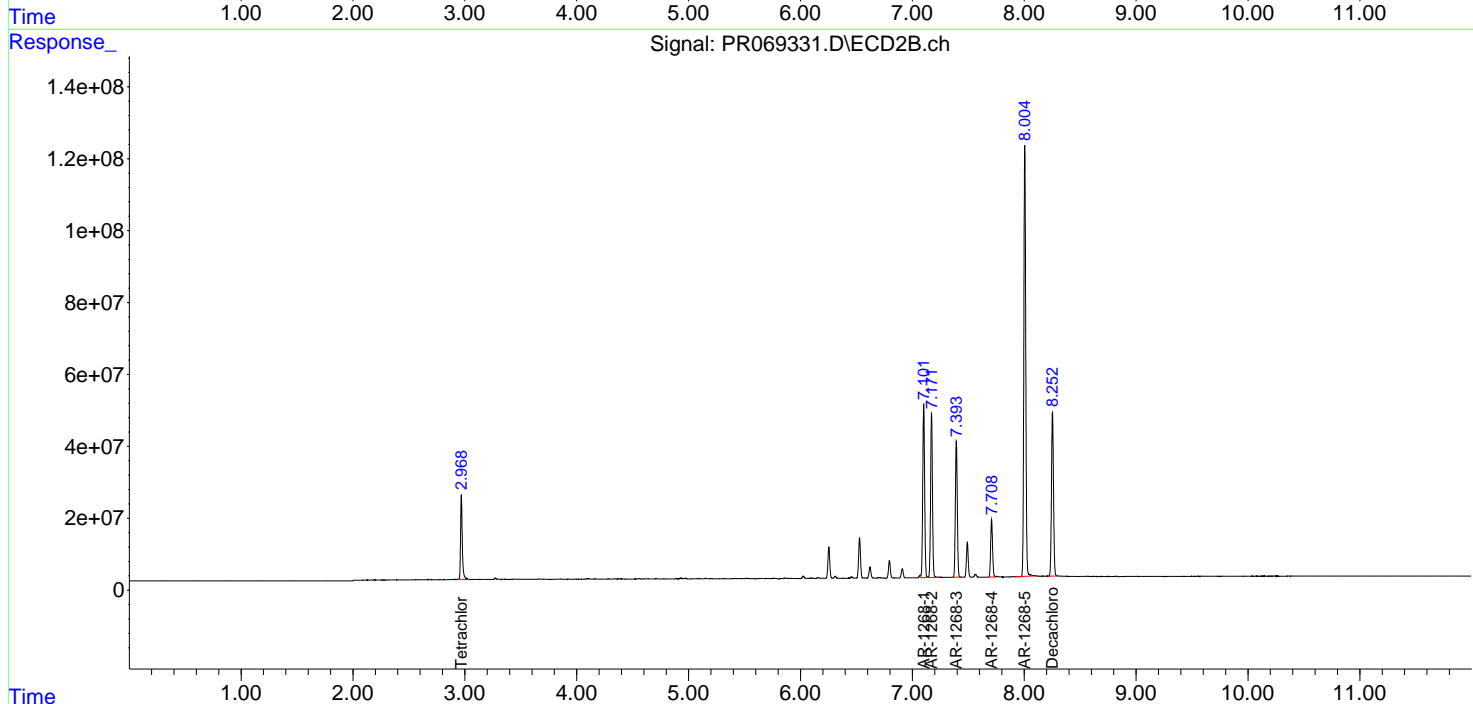
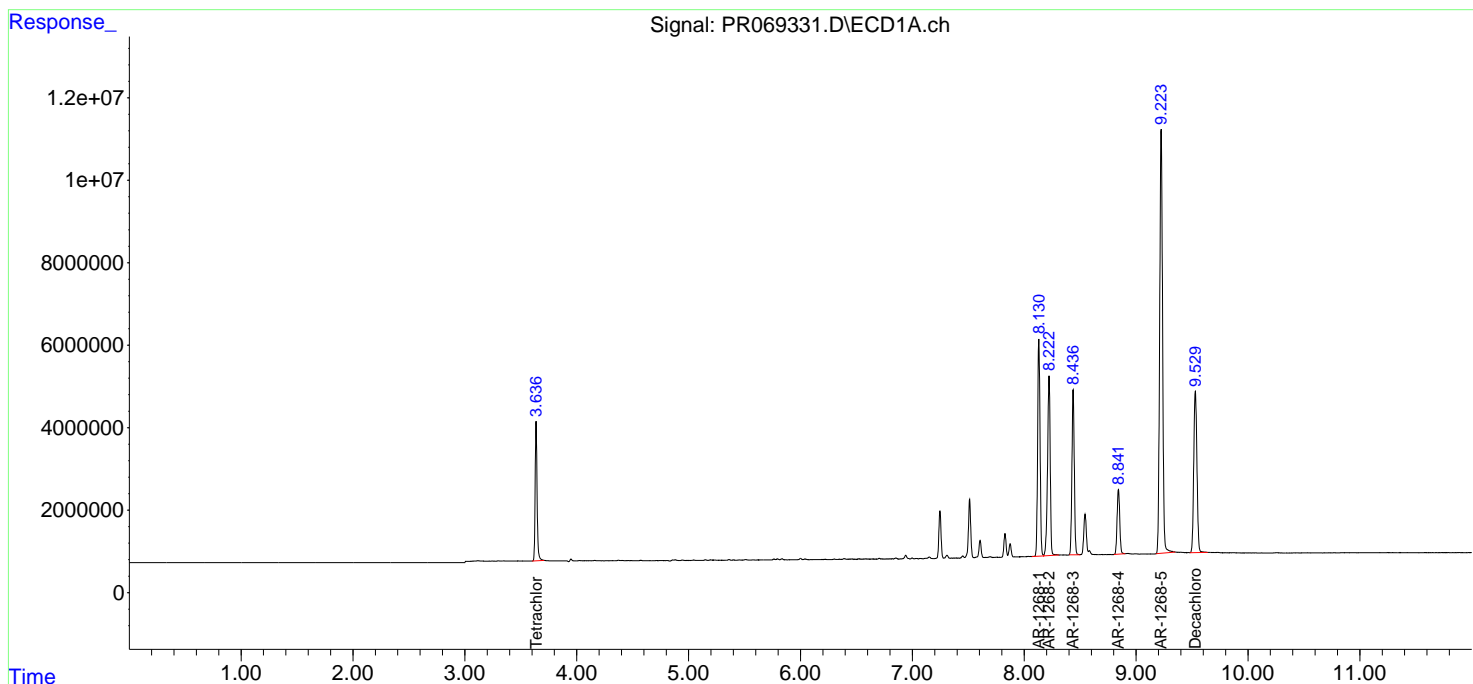
(f)=RT Delta > 1/2 Window (#)=Amounts differ by > 25% (m)=manual int.

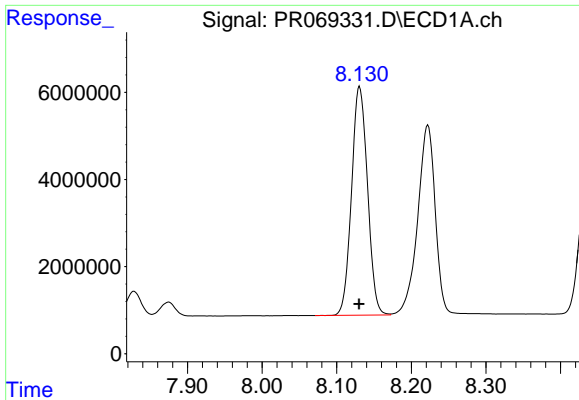
Data Path : Z:\pestpcbsrv\HPCHEM1\ECD_R\Data\PR112124\
 Data File : PR069331.D
 Signal(s) : Signal #1: ECD1A.ch Signal #2: ECD2B.ch
 Acq On : 22 Nov 2024 01:32
 Operator : AJ\MA
 Sample : AR1268ICC800
 Misc :
 ALS Vial : 41 Sample Multiplier: 1

Instrument :
 ECD_R
 ClientSampleId :

Integration File signal 1: autoint1.e
 Integration File signal 2: autoint2.e
 Quant Time: Nov 22 04:09:17 2024
 Quant Method : Z:\pestpcbsrv\HPCHEM1\ECD_R\Method\PR112124CLP.M
 Quant Title : GC EXTRACTABLES
 QLast Update : Fri Nov 22 04:07:50 2024
 Response via : Initial Calibration
 Integrator: ChemStation

Volume Inj. : 1 µl
 Signal #1 Phase : ZB MR1 Signal #2 Phase: ZB MR2
 Signal #1 Info : 30Mx0.32mmx 0.5µm Signal #2 Info : 30M x 0.32mm x 0.25µm

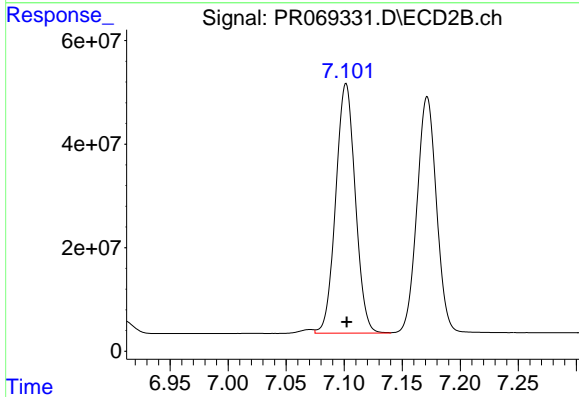




#41 AR-1268-1

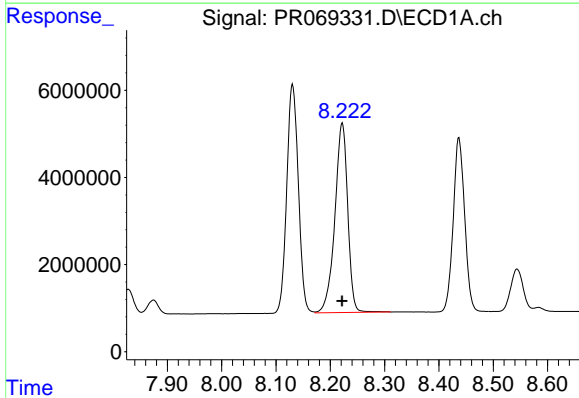
R.T.: 8.131 min
 Delta R.T.: 0.000 min
 Response: 77994135
 Conc: 769.75 ng/ml

Instrument :
 ECD_R
 ClientSampleId :



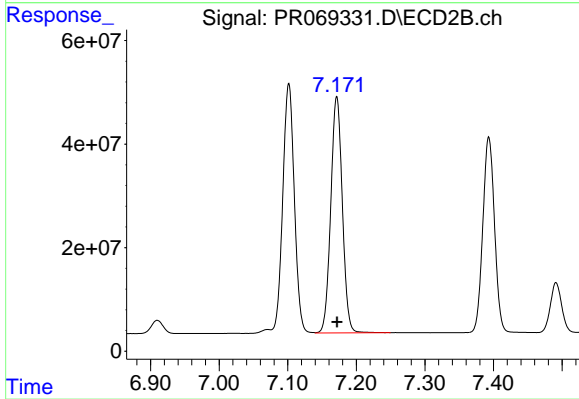
#41 AR-1268-1

R.T.: 7.102 min
 Delta R.T.: 0.000 min
 Response: 565455184
 Conc: 772.57 ng/ml



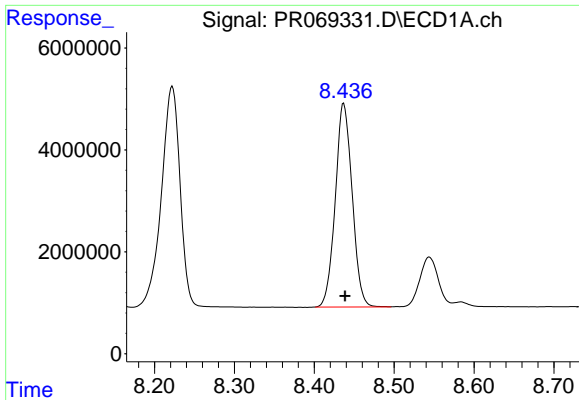
#42 AR-1268-2

R.T.: 8.222 min
 Delta R.T.: 0.000 min
 Response: 71384751
 Conc: 777.71 ng/ml



#42 AR-1268-2

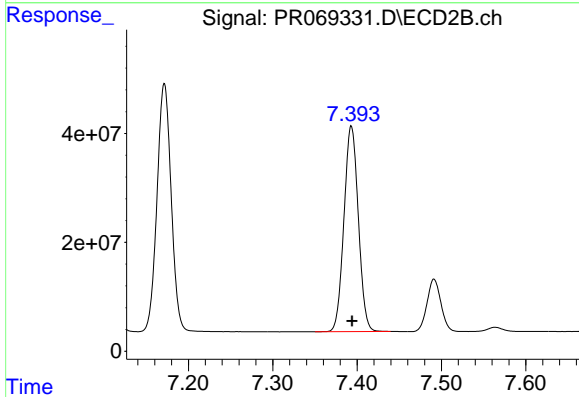
R.T.: 7.172 min
 Delta R.T.: 0.000 min
 Response: 533839435
 Conc: 783.67 ng/ml



#43 AR-1268-3

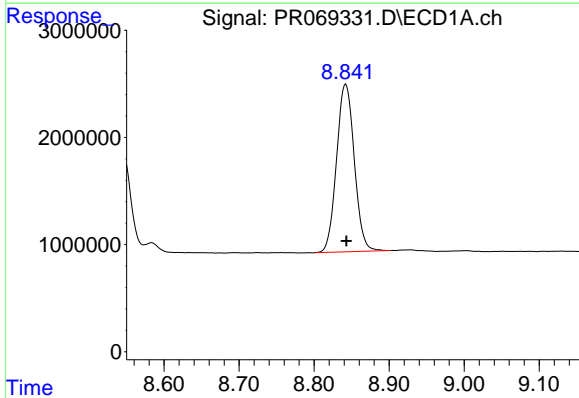
R.T.: 8.437 min
 Delta R.T.: -0.002 min
 Response: 58599127
 Conc: 764.89 ng/ml

Instrument :
 ECD_R
 ClientSampleId :



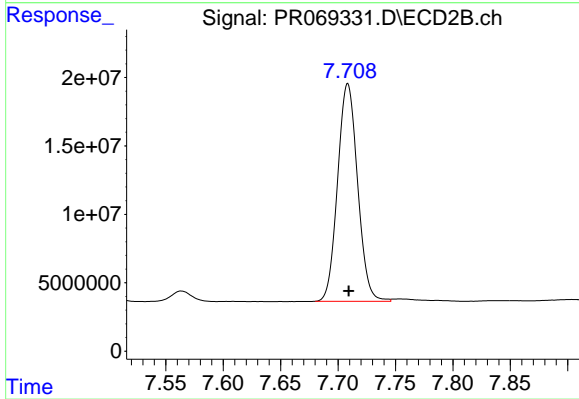
#43 AR-1268-3

R.T.: 7.393 min
 Delta R.T.: -0.001 min
 Response: 446954661
 Conc: 782.65 ng/ml



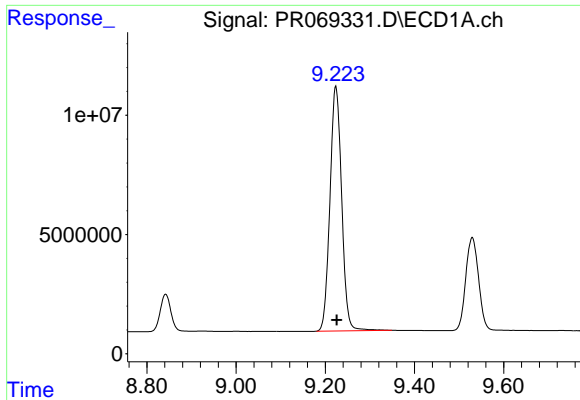
#44 AR-1268-4

R.T.: 8.842 min
 Delta R.T.: 0.000 min
 Response: 25704378
 Conc: 772.62 ng/ml



#44 AR-1268-4

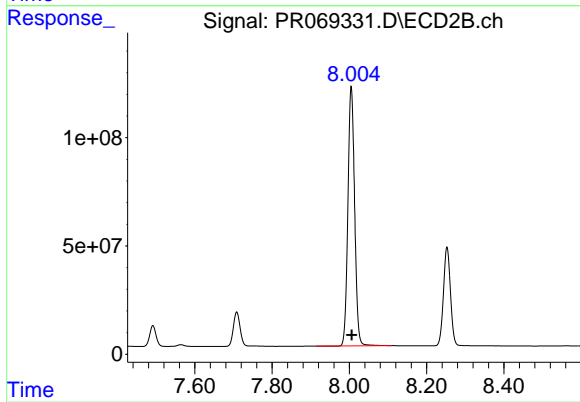
R.T.: 7.708 min
 Delta R.T.: -0.001 min
 Response: 193259317
 Conc: 778.05 ng/ml



#45 AR-1268-5

R.T.: 9.224 min
Delta R.T.: -0.002 min
Response: 186854597
Conc: 779.68 ng/ml

Instrument :
ECD_R
ClientSampleId :



#45 AR-1268-5

R.T.: 8.005 min
Delta R.T.: 0.000 min
Response: 1435256094
Conc: 777.50 ng/ml