

Data Path : Z:\pestpcbsrv\HPCHEM1\ECD\_R\Data\PR112124\  
 Data File : PR069326.D  
 Signal(s) : Signal #1: ECD1A.ch Signal #2: ECD2B.ch  
 Acq On : 22 Nov 2024 00:18  
 Operator : AJ\MA  
 Sample : AR1262ICC800  
 Misc :  
 ALS Vial : 36 Sample Multiplier: 1

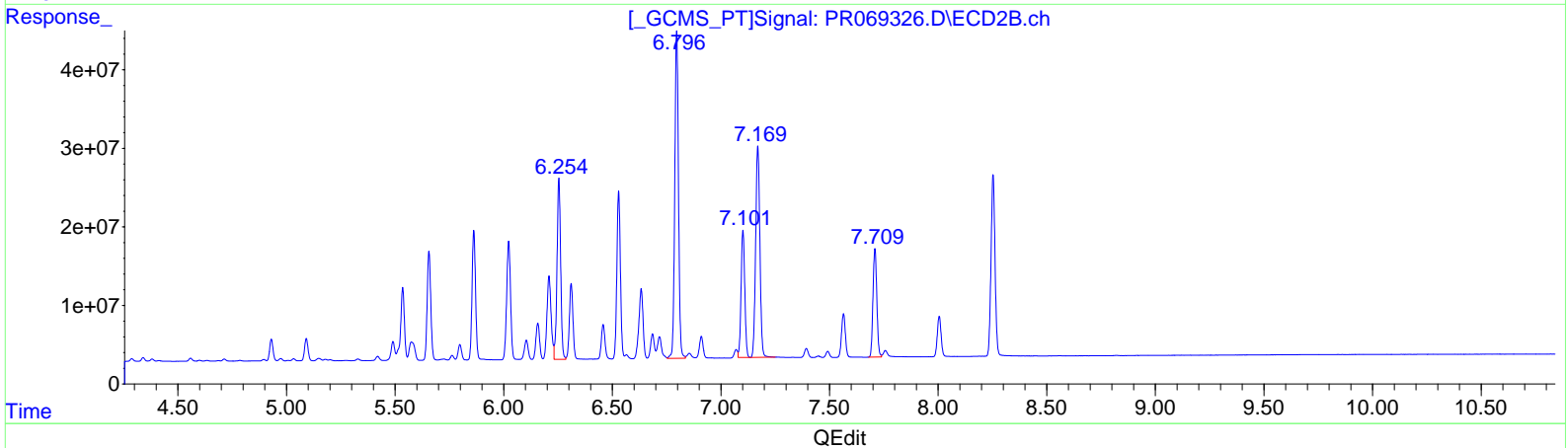
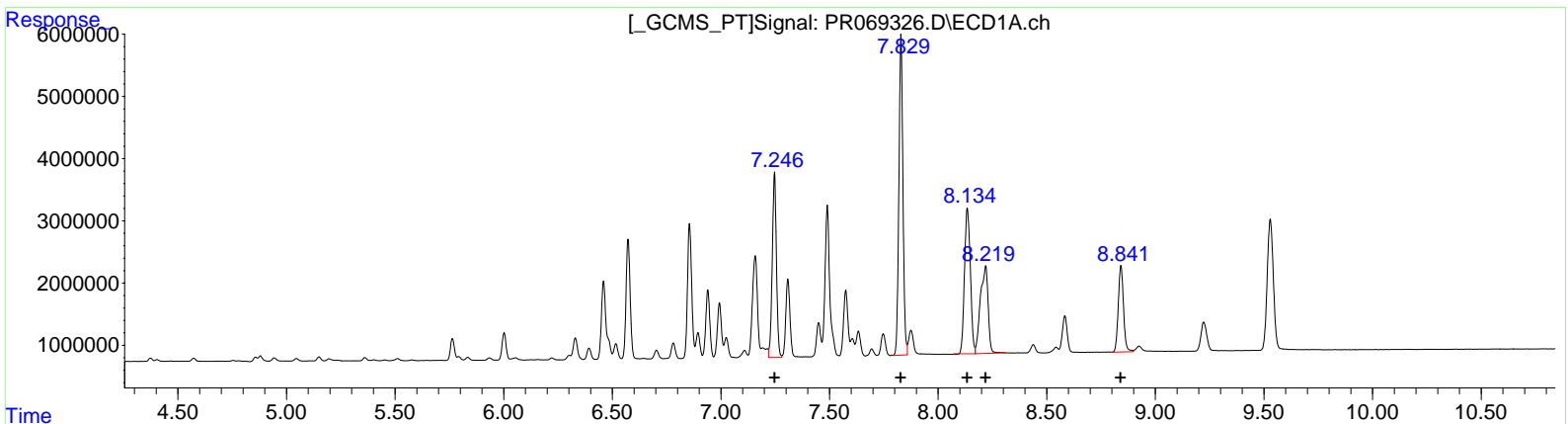
Instrument :  
 ECD\_R  
 LabSampleID :  
 AR1262ICC800

Manual Integrations APPROVED

Reviewed By :Yogesh Patel 11/22/2024  
 Supervised By :Ankita Jodhani 11/22/2024

Integration File signal 1: autoint1.e  
 Integration File signal 2: autoint2.e  
 Quant Time: Nov 22 03:05:55 2024  
 Quant Method : Z:\pestpcbsrv\HPCHEM1\ECD\_R\Method\PR112124CLP.M  
 Quant Title : GC EXTRACTABLES  
 QLast Update : Fri Nov 22 02:58:44 2024  
 Response via : Initial Calibration  
 Integrator: ChemStation

Volume Inj. : 1 µl  
 Signal #1 Phase : ZB MR1 Signal #2 Phase: ZB MR2  
 Signal #1 Info : 30Mx0.32mmx 0.5µm Signal #2 Info : 30M x 0.32mm x 0.25µm



(36) AR-1262-1 (L8)

R.T.	Response	Conc
7.25	39623718	743.71
7.83	66432186	767.59
8.13	44257777	744.77
8.22	34659123	764.18
8.84	23102557	776.74

(36) AR-1262-1 #2 (L8)

R.T.	Response	Conc
6.25	268957078	757.22
6.80	494662692	779.67
7.10	190840987	768.50
7.17	366950422	772.87
7.71	168896096	769.67

Data Path : Z:\pestpcbsrv\HPCHEM1\ECD\_R\Data\PR112124\  
 Data File : PR069326.D  
 Signal(s) : Signal #1: ECD1A.ch Signal #2: ECD2B.ch  
 Acq On : 22 Nov 2024 00:18  
 Operator : AJ\MA  
 Sample : AR1262ICC800  
 Misc :  
 ALS Vial : 36 Sample Multiplier: 1

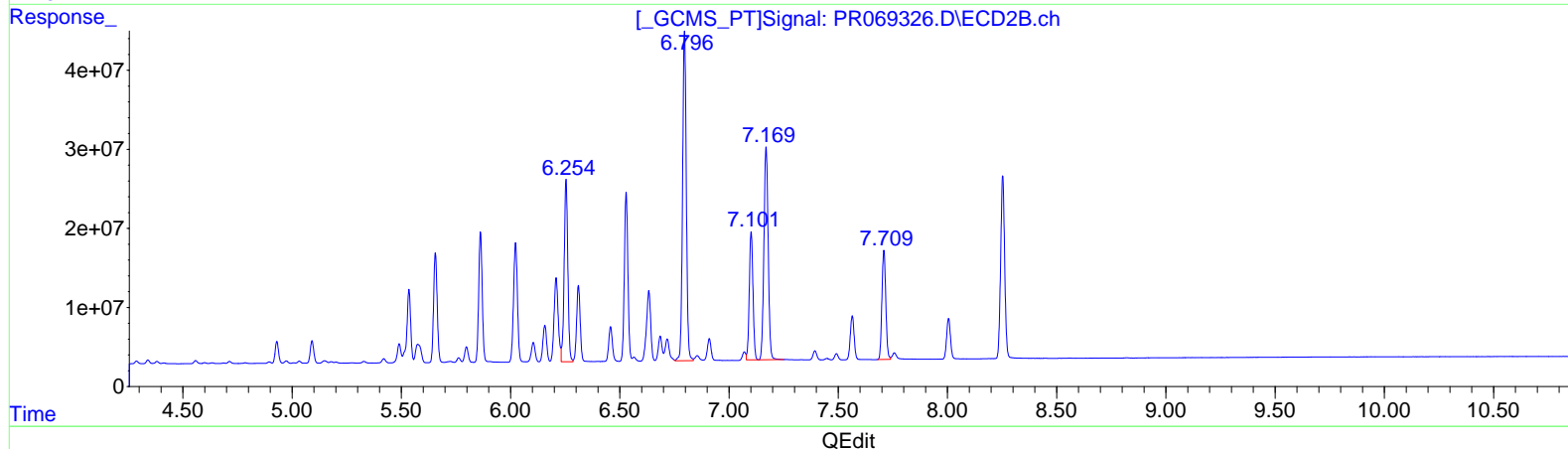
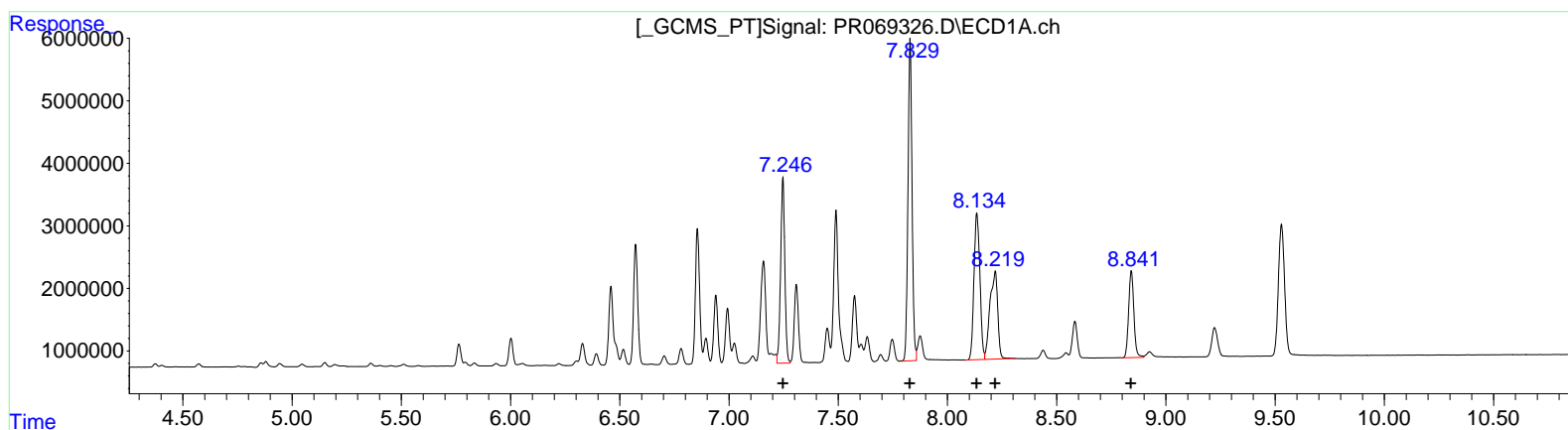
Instrument :  
 ECD\_R  
 LabSampleId :  
 AR1262ICC800

Manual Integrations APPROVED

Reviewed By :Yogesh Patel 11/22/2024  
 Supervised By :Ankita Jodhani 11/22/2024

Integration File signal 1: autoint1.e  
 Integration File signal 2: autoint2.e  
 Quant Time: Nov 22 03:05:55 2024  
 Quant Method : Z:\pestpcbsrv\HPCHEM1\ECD\_R\Method\PR112124CLP.M  
 Quant Title : GC EXTRACTABLES  
 QLast Update : Fri Nov 22 02:58:44 2024  
 Response via : Initial Calibration  
 Integrator: ChemStation

Volume Inj. : 1 µl  
 Signal #1 Phase : ZB MR1 Signal #2 Phase: ZB MR2  
 Signal #1 Info : 30Mx0.32mmx 0.5µm Signal #2 Info : 30M x 0.32mm x 0.25µm



(36) AR-1262-1 (L8)		
R.T.	Response	Conc
7.25	39623718	743.71
7.83	66432186	767.59
8.13	44283019	745.20
8.22	34659123	764.18
8.84	23102557	776.74
(36) AR-1262-1 #2 (L8)		
R.T.	Response	Conc
6.25	268957078	757.22
6.80	494662692	779.67
7.10	190840987	768.50
7.17	366950422	772.87
7.71	168896096	769.67