

Data Path : Z:\pestpcbsrv\HPCHEM1\ECD_R\Data\PR112223\
 Data File : PR064505.D
 Signal(s) : Signal #1: ECD1A.ch Signal #2: ECD2B.ch
 Acq On : 22 Nov 2023 19:21
 Operator : AJ\MA
 Sample : AIBLK59
 Misc :
 ALS Vial : 2 Sample Multiplier: 1

Instrument :
 ECD_R
 ClientSampleId :

Integration File signal 1: autoint1.e
 Integration File signal 2: autoint2.e
 Quant Time: Nov 22 20:56:01 2023
 Quant Method : Z:\pestpcbsrv\HPCHEM1\ECD_R\Method\PR112023CLP.M
 Quant Title : GC EXTRACTABLES
 QLast Update : Tue Nov 21 05:53:23 2023
 Response via : Initial Calibration
 Integrator: ChemStation

Volume Inj. : 1 µl
 Signal #1 Phase : ZB MR1 Signal #2 Phase: ZB MR2
 Signal #1 Info : 30Mx0.32mmx 0.5µm Signal #2 Info : 30M x 0.32mm x 0.25µm

Compound	RT#1	RT#2	Resp#1	Resp#2	ng/ml	ng/ml

System Monitoring Compounds						
1) SA Tetrachlo...	3.703	3.010	99315055	95025202	16.295	16.707
2) SA Decachlor...	9.725	8.392	116.6E6	146.3E6	33.019	33.781
Target Compounds						
3) L1 AR-1016-1	4.894f	4.156	431319	309020	2.367	1.619 #
4) L1 AR-1016-2	4.894f	4.181	431319	508603	1.609	1.917
5) L1 AR-1016-3	0.000	4.363	0	748089	N.D.	5.242 #
6) L1 AR-1016-4	5.125	4.432	538008	447063	3.942	4.184
7) L1 AR-1016-5	0.000	4.584f	0	75682	N.D.	0.527 #
8) L2 AR-1221-1	3.931	3.255	588814	86239	8.486	1.343 #
9) L2 AR-1221-2	4.018	3.320	1781860	1249680	37.658	28.186 #
10) L2 AR-1221-3	4.069	3.407	1019392	911332	6.531	5.960
11) L3 AR-1232-1	4.069	3.407	1019392	911332	7.943	7.230
12) L3 AR-1232-2	4.640	4.181	170892	508603	2.676	4.187 #
13) L3 AR-1232-3	4.894f	4.363	431319	748089	3.617	11.715 #
14) L3 AR-1232-4	5.125	4.432	538008	447063	9.098	7.787
15) L3 AR-1232-5	5.195f	4.584f	171511	75682	3.882	1.212 #
16) L4 AR-1242-1	4.894f	4.156	431319	309020	2.814	1.901 #
17) L4 AR-1242-2	4.894f	4.181	431319	508603	1.923	2.279
18) L4 AR-1242-3	0.000	4.363	0	748089	N.D.	6.232 #
19) L4 AR-1242-4	5.125	4.432	538008	447063	4.681	3.905
20) L4 AR-1242-5	5.924	5.008	1094285	2618727	9.495	17.666 #
21) L5 AR-1248-1	4.894f	4.156	431319	309020	3.652	2.502 #
22) L5 AR-1248-2	5.195f	4.432	171511	447063	1.050	2.730 #
23) L5 AR-1248-3	0.000	4.432	0	447063	N.D.	2.603 #
24) L5 AR-1248-4	5.861	4.584f	2340561	75682	11.450	0.364 #
25) L5 AR-1248-5	5.924	5.039	1094285	2647766	5.405	12.789 #
26) L6 AR-1254-1	5.861	5.008	2340561	2618727	11.526	8.457 #
27) L6 AR-1254-2	6.106	5.177	1626401	1446650	5.294	5.388
28) L6 AR-1254-3	6.484	5.603	682663	889294	2.174	2.097
29) L6 AR-1254-4	6.845f	5.926f	965620	5168605	4.473	19.566 #
30) L6 AR-1254-5	7.230f	6.315	380624	2100422	1.629	5.562 #
31) L7 AR-1260-1	6.686	5.766	288381	4880897	1.206	16.697 #
32) L7 AR-1260-2	6.957	5.926	1281542	5168605	4.686	14.740 #
33) L7 AR-1260-3	7.403f	6.126	730491	4962456	3.676	14.732 #
34) L7 AR-1260-4	7.623	0.000	948292	0	4.292	N.D. #
35) L7 AR-1260-5	7.968	6.931	125122	7267910	0.301	11.535 #
36) L8 AR-1262-1	7.403f	6.315f	730491	2100422	2.539	5.412 #
37) L8 AR-1262-2	7.968	6.931	125122	7267910	0.270	10.458 #
38) L8 AR-1262-3	8.248	7.194	269004	1400615	0.872	5.635 #
39) L8 AR-1262-4	8.340	7.241f	683656	1746875	2.965	3.461
40) L8 AR-1262-5	0.000	7.872f	0	3653379	N.D.	16.158 #
41) L9 AR-1268-1	8.248	7.194	269004	1400615	0.508	1.950 #

Data Path : Z:\pestpcbsrv\HPCHEM1\ECD_R\Data\PR112223\
 Data File : PR064505.D
 Signal(s) : Signal #1: ECD1A.ch Signal #2: ECD2B.ch
 Acq On : 22 Nov 2023 19:21
 Operator : AJ\MA
 Sample : AIBLK59
 Misc :
 ALS Vial : 2 Sample Multiplier: 1

Instrument :
 ECD_R
 ClientSampleId :

Integration File signal 1: autoint1.e
 Integration File signal 2: autoint2.e
 Quant Time: Nov 22 20:56:01 2023
 Quant Method : Z:\pestpcbsrv\HPCHEM1\ECD_R\Method\PR112023CLP.M
 Quant Title : GC EXTRACTABLES
 QLast Update : Tue Nov 21 05:53:23 2023
 Response via : Initial Calibration
 Integrator: ChemStation

Volume Inj. : 1 µl
 Signal #1 Phase : ZB MR1 Signal #2 Phase: ZB MR2
 Signal #1 Info : 30Mx0.32mmx 0.5µm Signal #2 Info : 30M x 0.32mm x 0.25µm

	Compound	RT#1	RT#2	Resp#1	Resp#2	ng/ml	ng/ml
42)	L9 AR-1268-2	8.340	7.241f	683656	1746875	1.460	2.437 #
43)	L9 AR-1268-3	8.580	7.516	434755	1136227	1.061	1.858 #
44)	L9 AR-1268-4	0.000	7.872f	0	3653379	N.D.	14.566 #
45)	L9 AR-1268-5	9.401	8.130	1114705	1416779	0.862	0.779

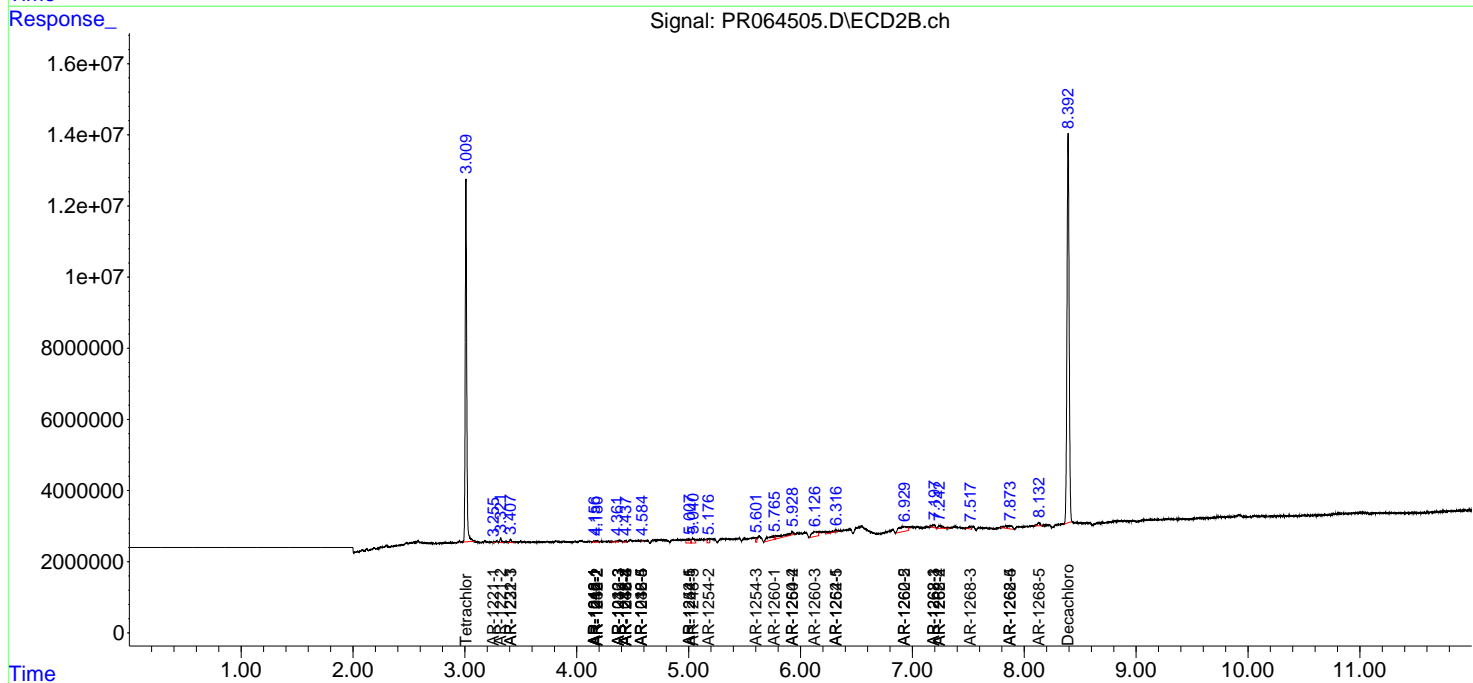
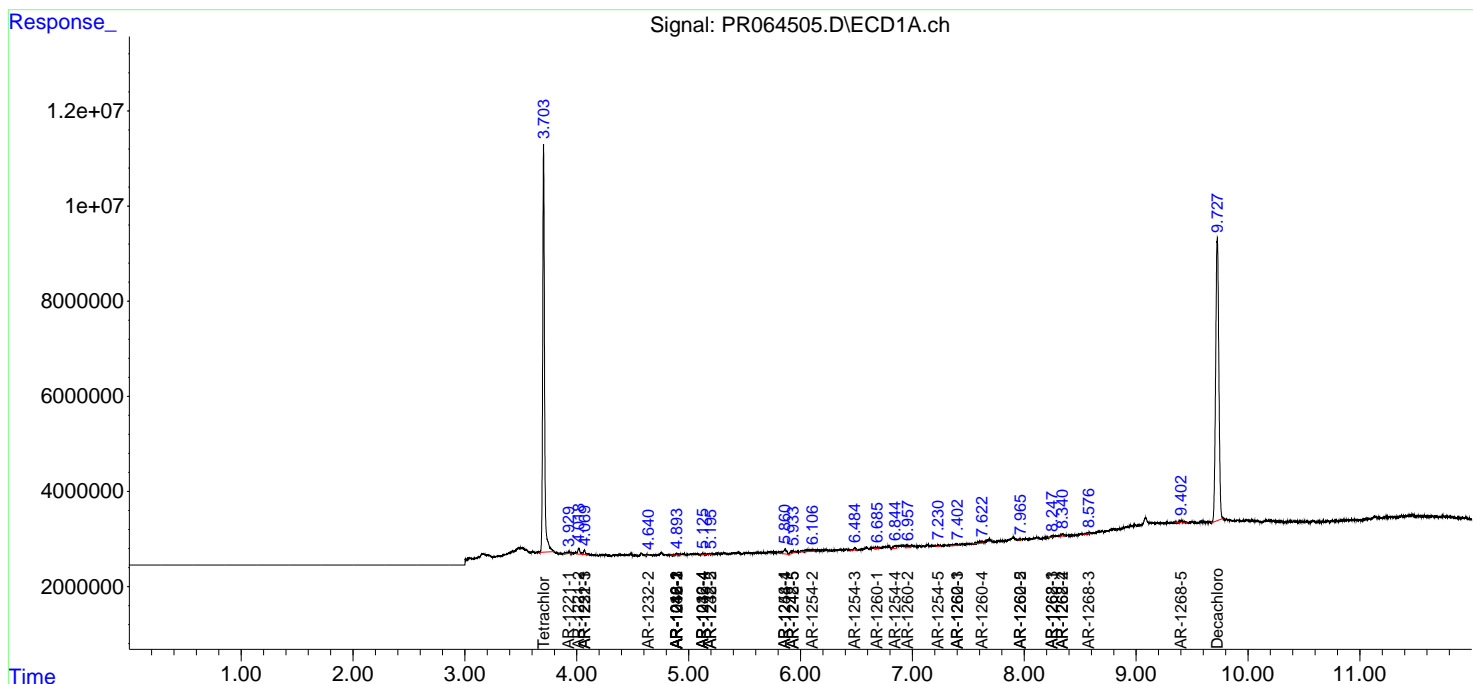
(f)=RT Delta > 1/2 Window (#)=Amounts differ by > 25% (m)=manual int.

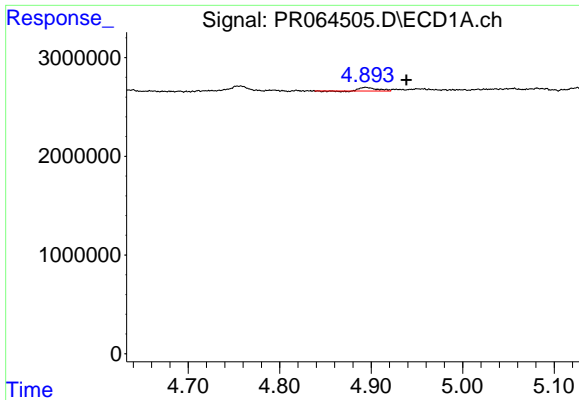
Data Path : Z:\pestpcbsrv\HPCHEM1\ECD_R\Data\PR112223\
 Data File : PR064505.D
 Signal(s) : Signal #1: ECD1A.ch Signal #2: ECD2B.ch
 Acq On : 22 Nov 2023 19:21
 Operator : AJ\MA
 Sample : AIBLK59
 Misc :
 ALS Vial : 2 Sample Multiplier: 1

Instrument :
 ECD_R
 ClientSampleId :

Integration File signal 1: autoint1.e
 Integration File signal 2: autoint2.e
 Quant Time: Nov 22 20:56:01 2023
 Quant Method : Z:\pestpcbsrv\HPCHEM1\ECD_R\Method\PR112023CLP.M
 Quant Title : GC EXTRACTABLES
 QLast Update : Tue Nov 21 05:53:23 2023
 Response via : Initial Calibration
 Integrator: ChemStation

Volume Inj. : 1 µl
 Signal #1 Phase : ZB MR1 Signal #2 Phase: ZB MR2
 Signal #1 Info : 30Mx0.32mmx 0.5µm Signal #2 Info : 30M x 0.32mm x 0.25µm

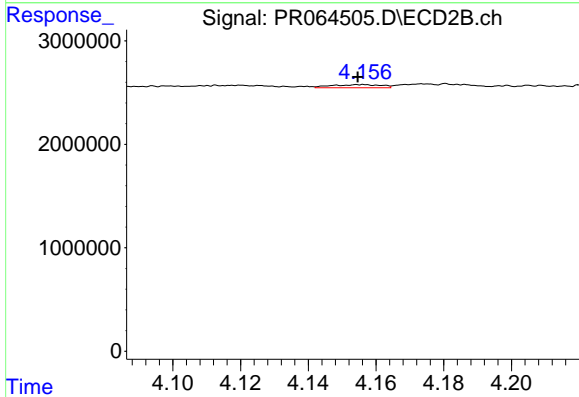




#3 AR-1016-1

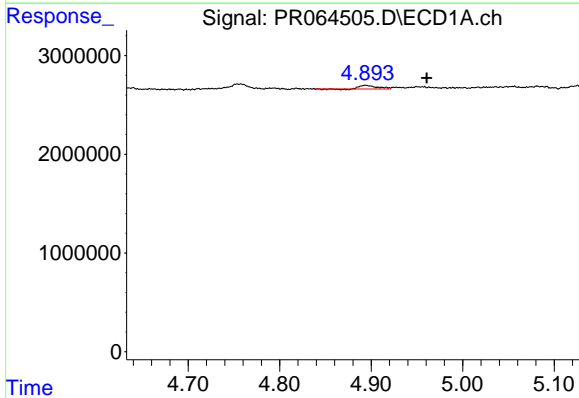
R.T.: 4.894 min
 Delta R.T.: -0.044 min
 Response: 431319
 Conc: 2.37 ng/ml

Instrument :
 ECD_R
 ClientSampleId :



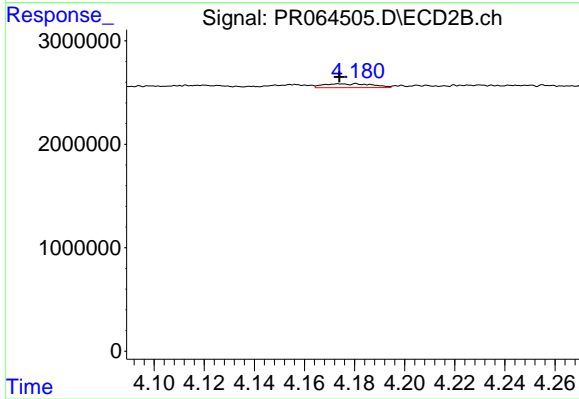
#3 AR-1016-1

R.T.: 4.156 min
 Delta R.T.: 0.001 min
 Response: 309020
 Conc: 1.62 ng/ml



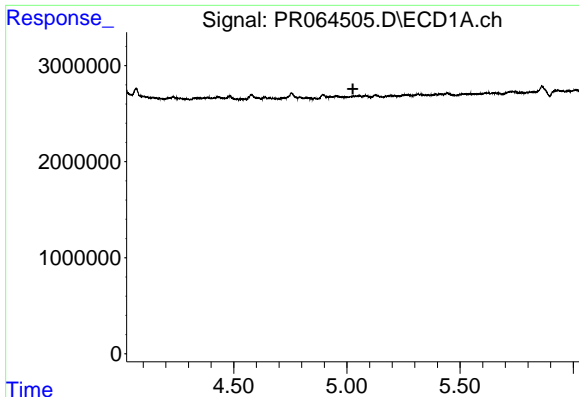
#4 AR-1016-2

R.T.: 4.894 min
 Delta R.T.: -0.067 min
 Response: 431319
 Conc: 1.61 ng/ml



#4 AR-1016-2

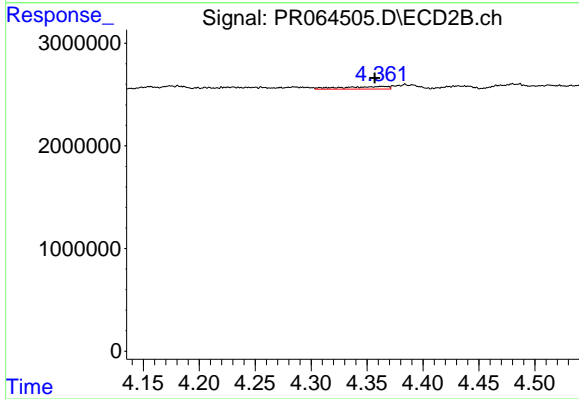
R.T.: 4.181 min
 Delta R.T.: 0.007 min
 Response: 508603
 Conc: 1.92 ng/ml



#5 AR-1016-3

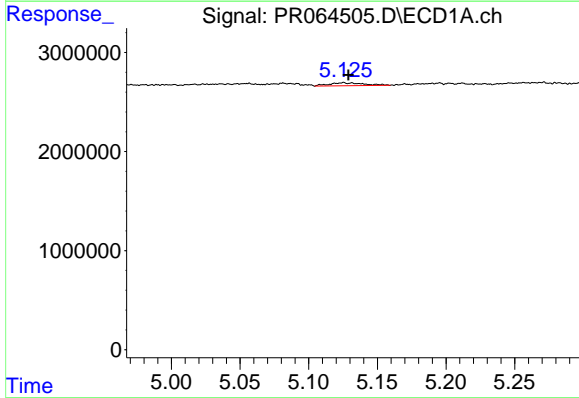
R.T.: 0.000 min
 Exp R.T.: 5.026 min
 Response: 0
 Conc: N.D.

Instrument :
 ECD_R
 ClientSampleId :



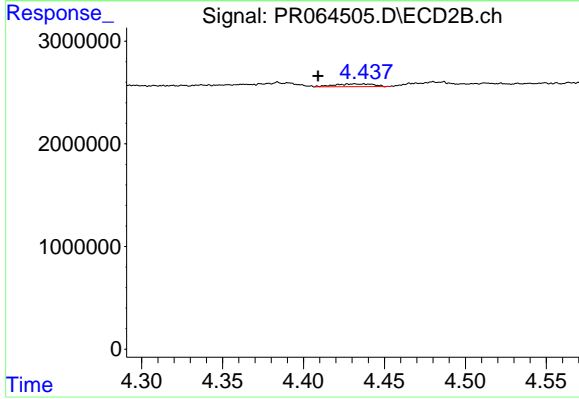
#5 AR-1016-3

R.T.: 4.363 min
 Delta R.T.: 0.006 min
 Response: 748089
 Conc: 5.24 ng/ml



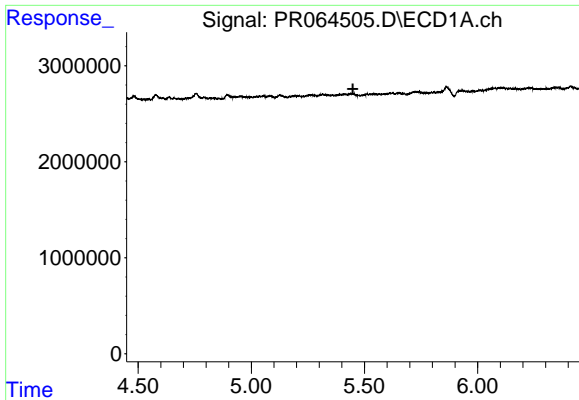
#6 AR-1016-4

R.T.: 5.125 min
 Delta R.T.: -0.004 min
 Response: 538008
 Conc: 3.94 ng/ml



#6 AR-1016-4

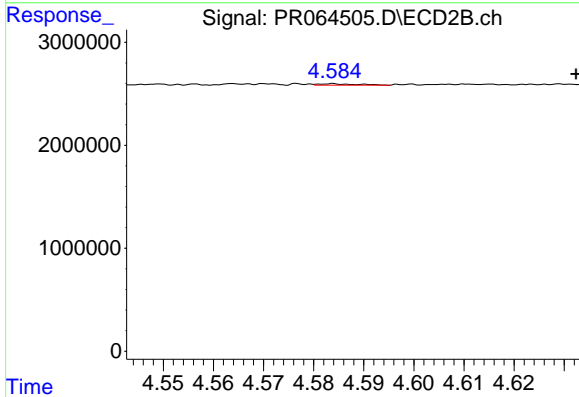
R.T.: 4.432 min
 Delta R.T.: 0.023 min
 Response: 447063
 Conc: 4.18 ng/ml



#7 AR-1016-5

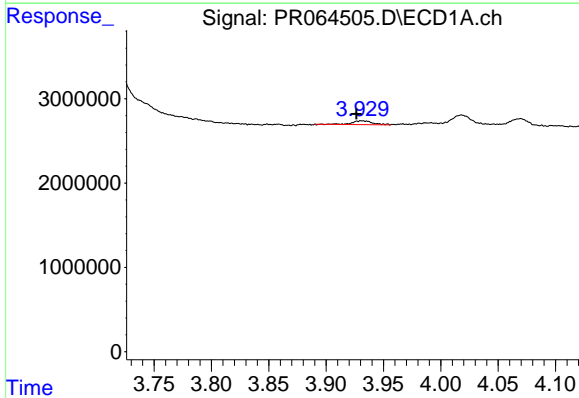
R.T.: 0.000 min
 Exp R.T.: 5.449 min
 Response: 0
 Conc: N.D.

Instrument :
 ECD_R
 ClientSampleId :



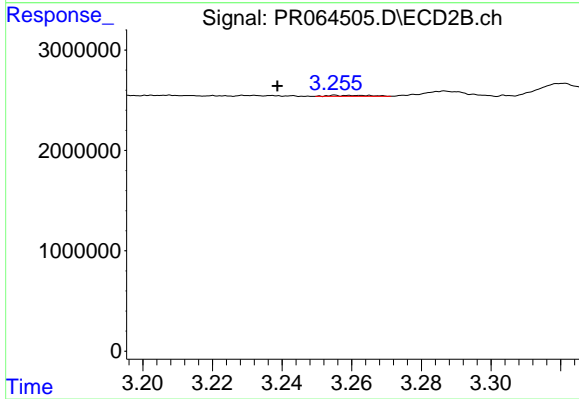
#7 AR-1016-5

R.T.: 4.584 min
 Delta R.T.: -0.049 min
 Response: 75682
 Conc: 0.53 ng/ml



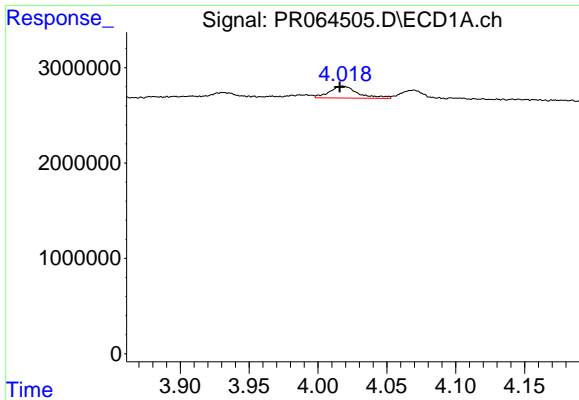
#8 AR-1221-1

R.T.: 3.931 min
 Delta R.T.: 0.005 min
 Response: 588814
 Conc: 8.49 ng/ml



#8 AR-1221-1

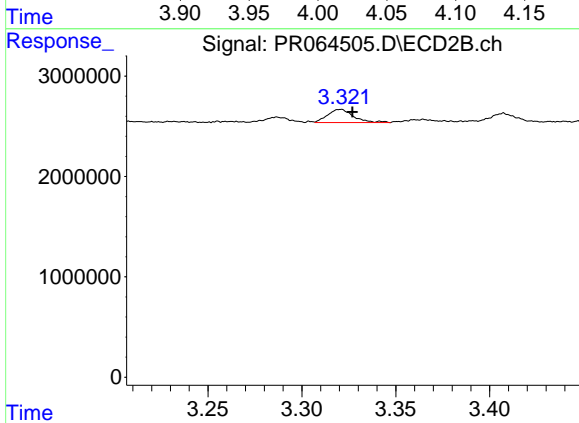
R.T.: 3.255 min
 Delta R.T.: 0.017 min
 Response: 86239
 Conc: 1.34 ng/ml



#9 AR-1221-2

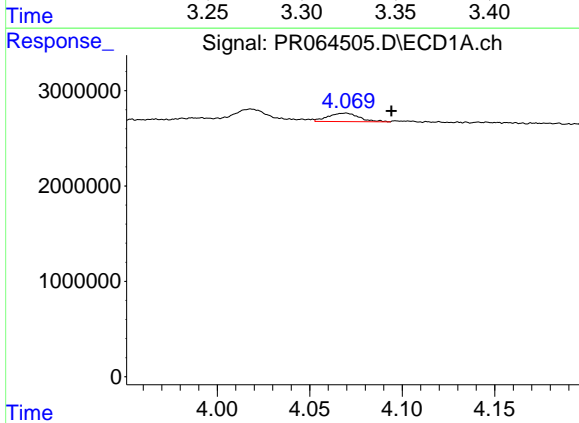
R.T.: 4.018 min
 Delta R.T.: 0.002 min
 Response: 1781860
 Conc: 37.66 ng/ml

Instrument :
 ECD_R
 ClientSampleId :



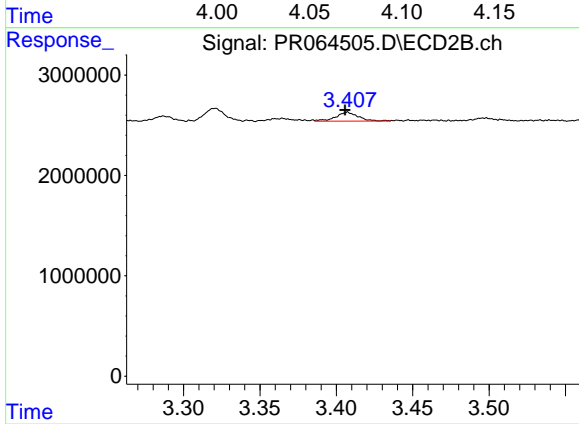
#9 AR-1221-2

R.T.: 3.320 min
 Delta R.T.: -0.007 min
 Response: 1249680
 Conc: 28.19 ng/ml



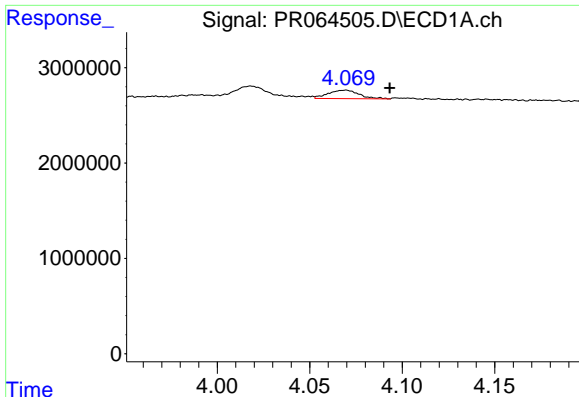
#10 AR-1221-3

R.T.: 4.069 min
 Delta R.T.: -0.025 min
 Response: 1019392
 Conc: 6.53 ng/ml



#10 AR-1221-3

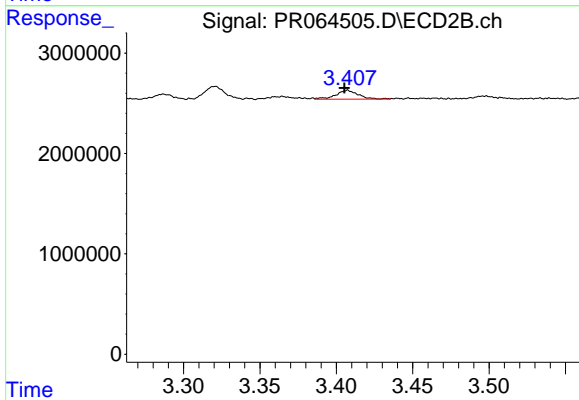
R.T.: 3.407 min
 Delta R.T.: 0.002 min
 Response: 911332
 Conc: 5.96 ng/ml



#11 AR-1232-1

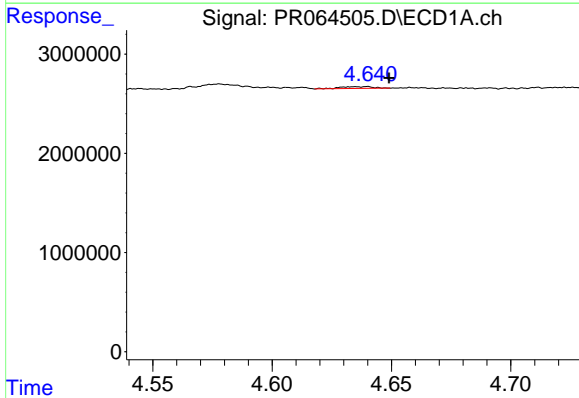
R.T.: 4.069 min
 Delta R.T.: -0.024 min
 Response: 1019392
 Conc: 7.94 ng/ml

Instrument :
 ECD_R
 ClientSampleId :



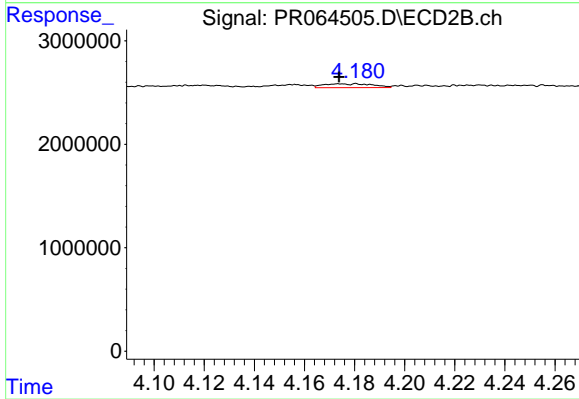
#11 AR-1232-1

R.T.: 3.407 min
 Delta R.T.: 0.002 min
 Response: 911332
 Conc: 7.23 ng/ml



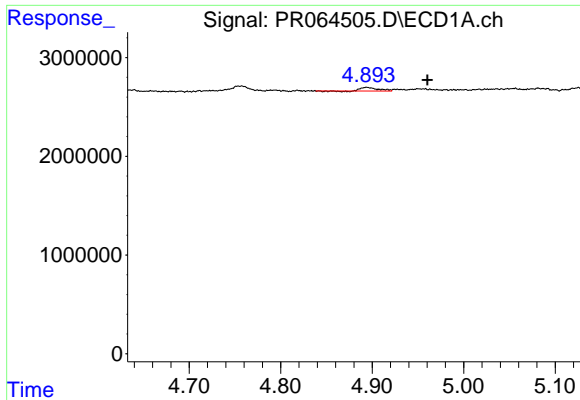
#12 AR-1232-2

R.T.: 4.640 min
 Delta R.T.: -0.009 min
 Response: 170892
 Conc: 2.68 ng/ml



#12 AR-1232-2

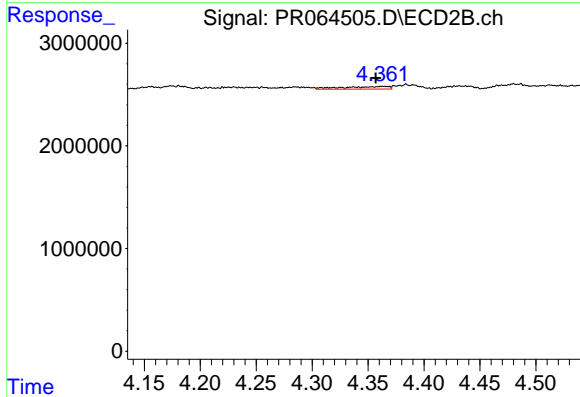
R.T.: 4.181 min
 Delta R.T.: 0.007 min
 Response: 508603
 Conc: 4.19 ng/ml



#13 AR-1232-3

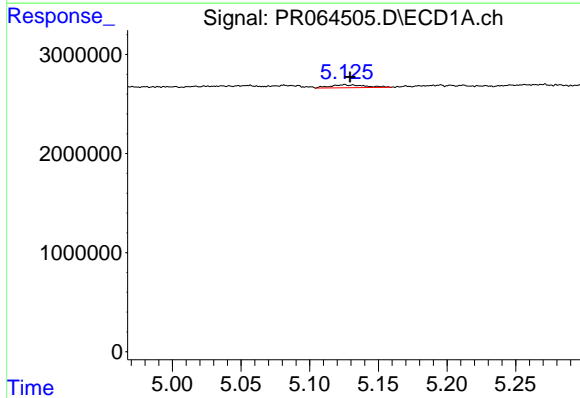
R.T.: 4.894 min
 Delta R.T.: -0.066 min
 Response: 431319
 Conc: 3.62 ng/ml

Instrument :
 ECD_R
 ClientSampleId :



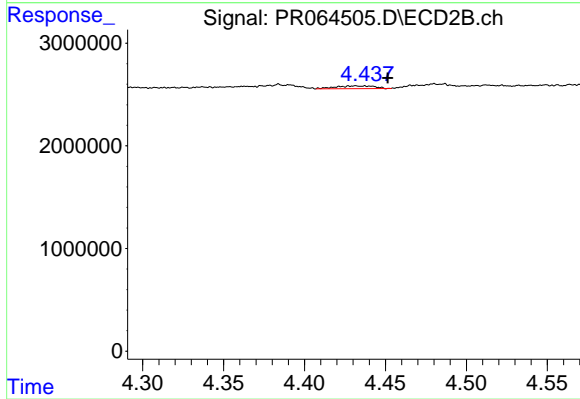
#13 AR-1232-3

R.T.: 4.363 min
 Delta R.T.: 0.007 min
 Response: 748089
 Conc: 11.72 ng/ml



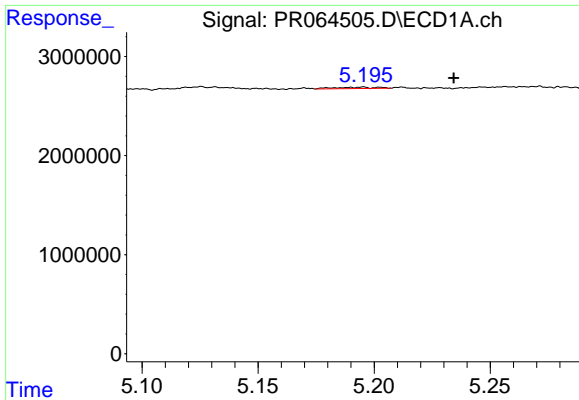
#14 AR-1232-4

R.T.: 5.125 min
 Delta R.T.: -0.004 min
 Response: 538008
 Conc: 9.10 ng/ml



#14 AR-1232-4

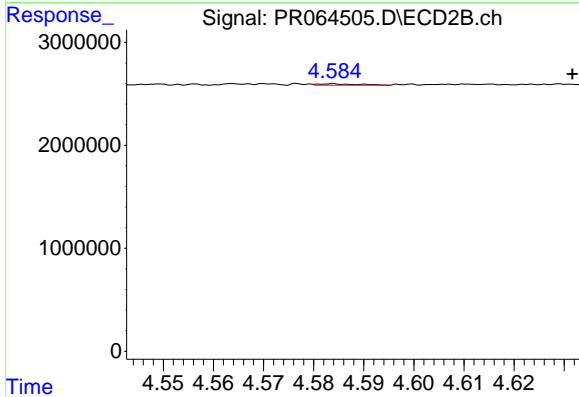
R.T.: 4.432 min
 Delta R.T.: -0.020 min
 Response: 447063
 Conc: 7.79 ng/ml



#15 AR-1232-5

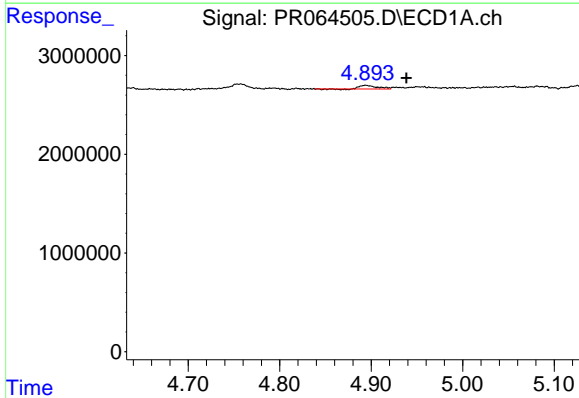
R.T.: 5.195 min
 Delta R.T.: -0.039 min
 Response: 171511
 Conc: 3.88 ng/ml

Instrument :
 ECD_R
 ClientSampleId :



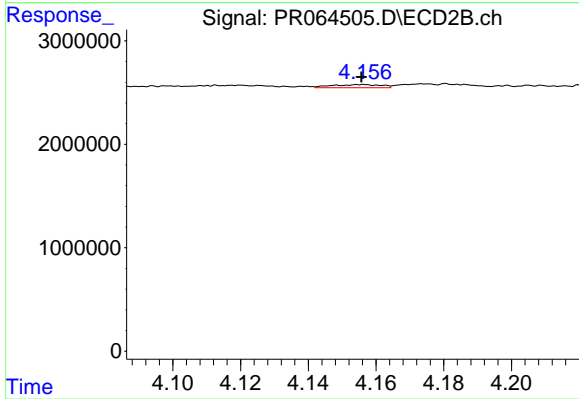
#15 AR-1232-5

R.T.: 4.584 min
 Delta R.T.: -0.048 min
 Response: 75682
 Conc: 1.21 ng/ml



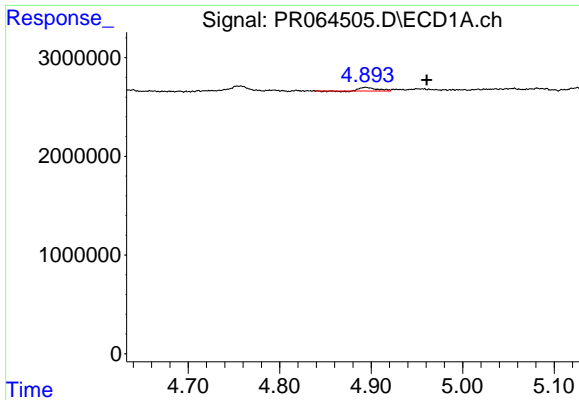
#16 AR-1242-1

R.T.: 4.894 min
 Delta R.T.: -0.044 min
 Response: 431319
 Conc: 2.81 ng/ml



#16 AR-1242-1

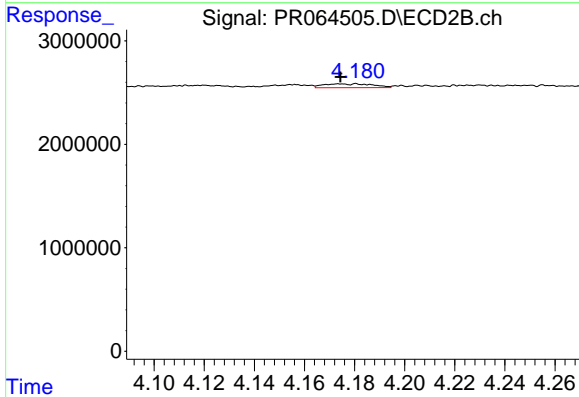
R.T.: 4.156 min
 Delta R.T.: 0.000 min
 Response: 309020
 Conc: 1.90 ng/ml



#17 AR-1242-2

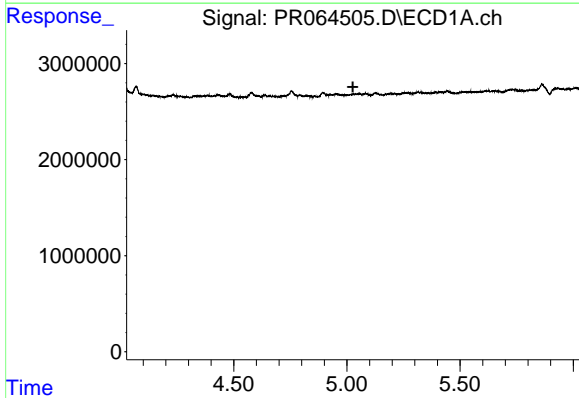
R.T.: 4.894 min
 Delta R.T.: -0.067 min
 Response: 431319
 Conc: 1.92 ng/ml

Instrument :
 ECD_R
 ClientSampleId :



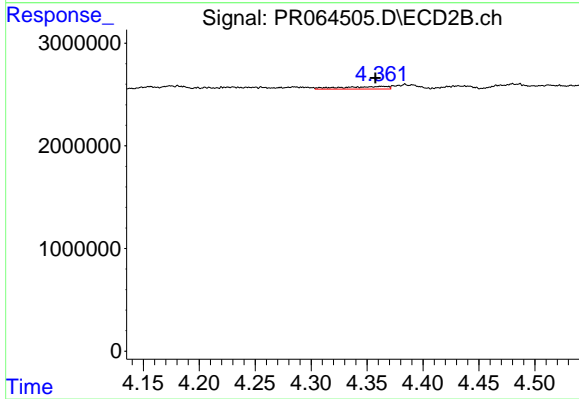
#17 AR-1242-2

R.T.: 4.181 min
 Delta R.T.: 0.007 min
 Response: 508603
 Conc: 2.28 ng/ml



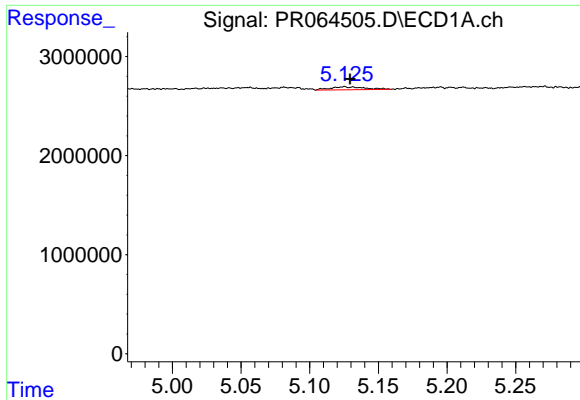
#18 AR-1242-3

R.T.: 0.000 min
 Exp R.T. : 5.026 min
 Response: 0
 Conc: N.D.



#18 AR-1242-3

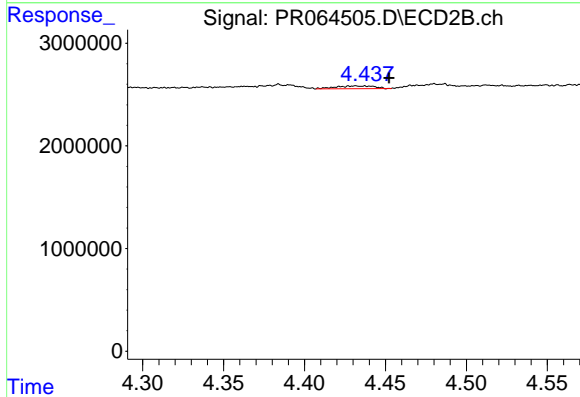
R.T.: 4.363 min
 Delta R.T.: 0.006 min
 Response: 748089
 Conc: 6.23 ng/ml



#19 AR-1242-4

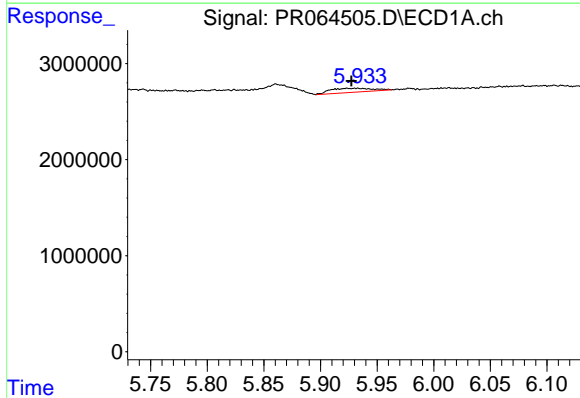
R.T.: 5.125 min
 Delta R.T.: -0.004 min
 Response: 538008
 Conc: 4.68 ng/ml

Instrument :
 ECD_R
 ClientSampleId :



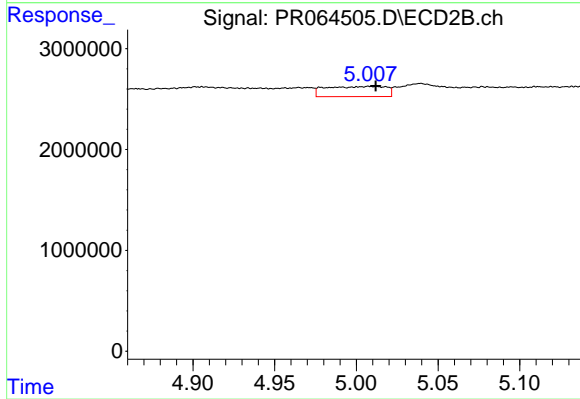
#19 AR-1242-4

R.T.: 4.432 min
 Delta R.T.: -0.021 min
 Response: 447063
 Conc: 3.90 ng/ml



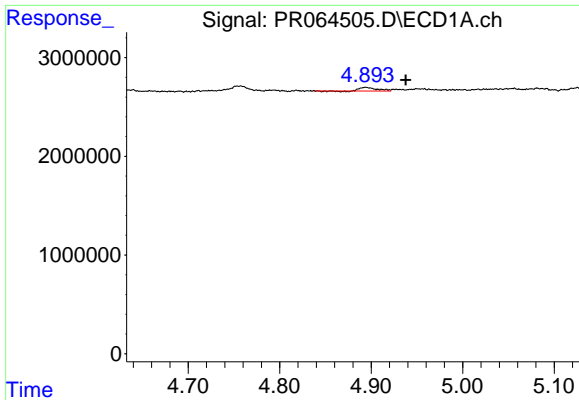
#20 AR-1242-5

R.T.: 5.924 min
 Delta R.T.: -0.004 min
 Response: 1094285
 Conc: 9.50 ng/ml



#20 AR-1242-5

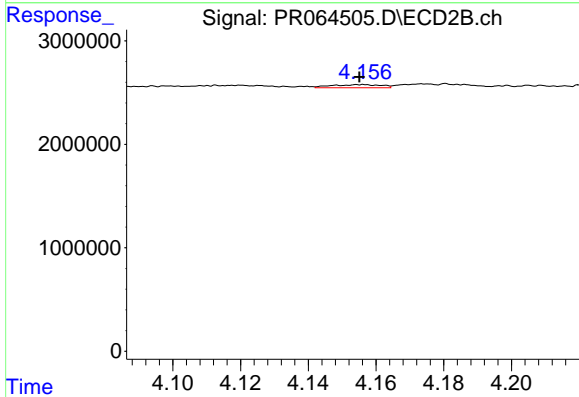
R.T.: 5.008 min
 Delta R.T.: -0.004 min
 Response: 2618727
 Conc: 17.67 ng/ml



#21 AR-1248-1

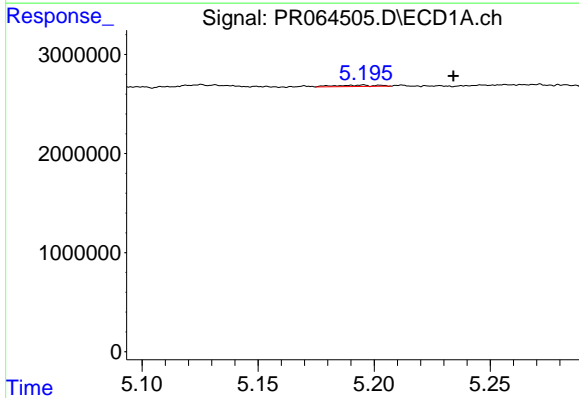
R.T.: 4.894 min
 Delta R.T.: -0.044 min
 Response: 431319
 Conc: 3.65 ng/ml

Instrument :
 ECD_R
 ClientSampleId :



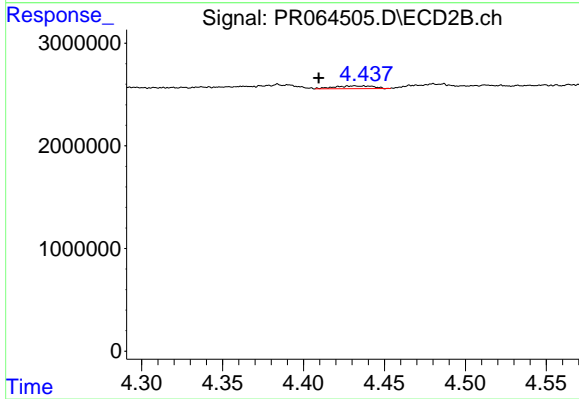
#21 AR-1248-1

R.T.: 4.156 min
 Delta R.T.: 0.000 min
 Response: 309020
 Conc: 2.50 ng/ml



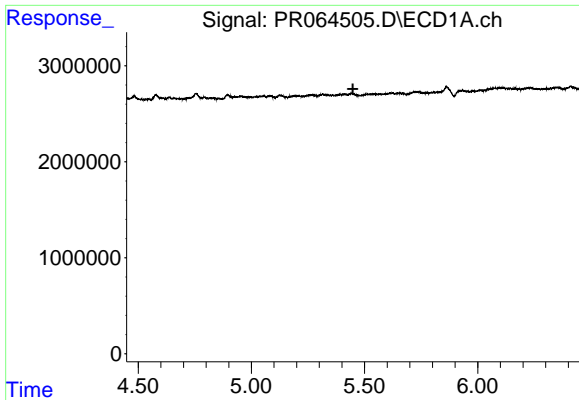
#22 AR-1248-2

R.T.: 5.195 min
 Delta R.T.: -0.039 min
 Response: 171511
 Conc: 1.05 ng/ml



#22 AR-1248-2

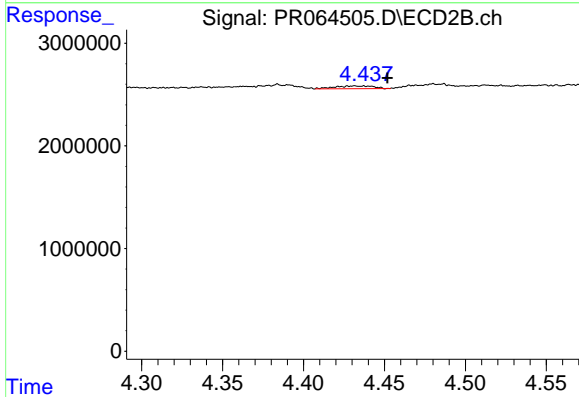
R.T.: 4.432 min
 Delta R.T.: 0.022 min
 Response: 447063
 Conc: 2.73 ng/ml



#23 AR-1248-3

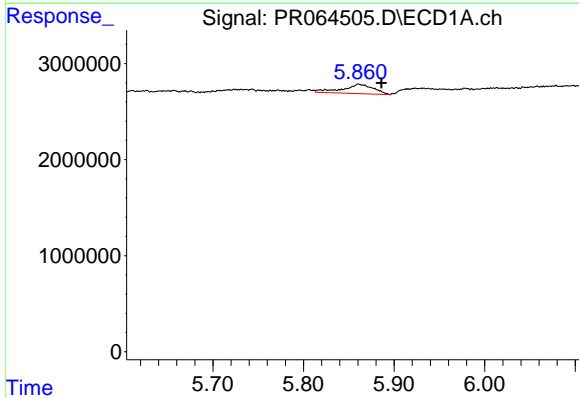
R.T.: 0.000 min
 Exp R.T.: 5.448 min
 Response: 0
 Conc: N.D.

Instrument :
 ECD_R
 ClientSampleId :



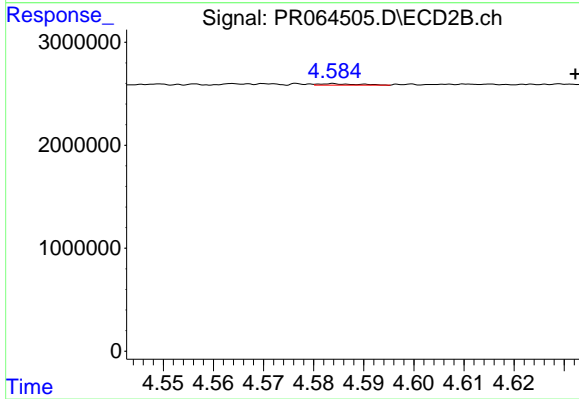
#23 AR-1248-3

R.T.: 4.432 min
 Delta R.T.: -0.020 min
 Response: 447063
 Conc: 2.60 ng/ml



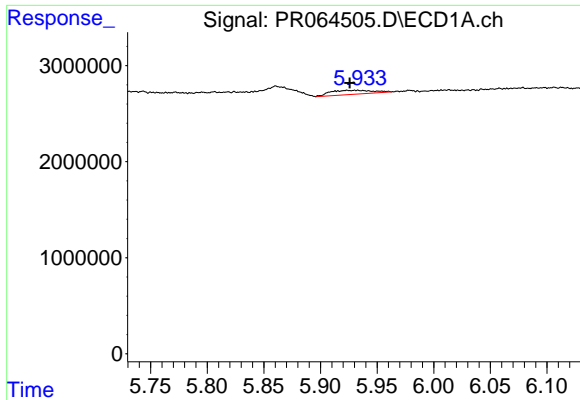
#24 AR-1248-4

R.T.: 5.861 min
 Delta R.T.: -0.025 min
 Response: 2340561
 Conc: 11.45 ng/ml



#24 AR-1248-4

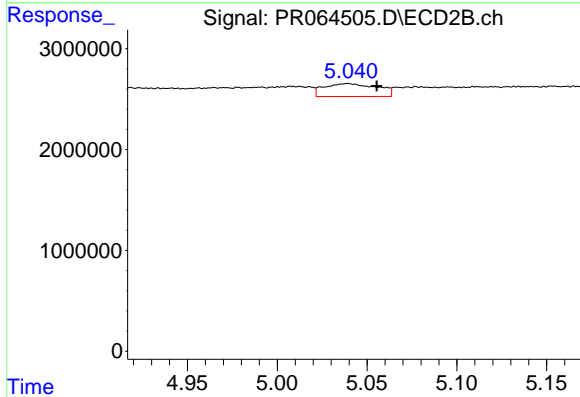
R.T.: 4.584 min
 Delta R.T.: -0.048 min
 Response: 75682
 Conc: 0.36 ng/ml



#25 AR-1248-5

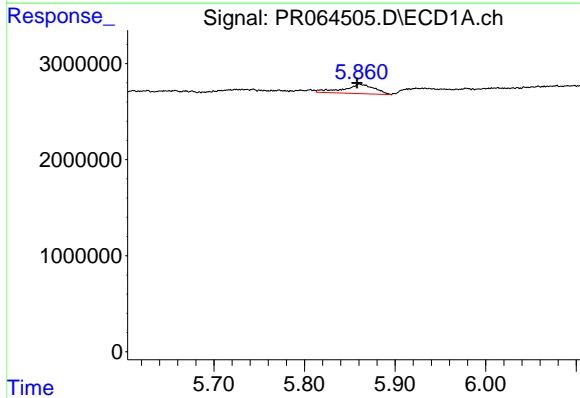
R.T.: 5.924 min
 Delta R.T.: -0.002 min
 Response: 1094285
 Conc: 5.41 ng/ml

Instrument :
 ECD_R
 ClientSampleId :



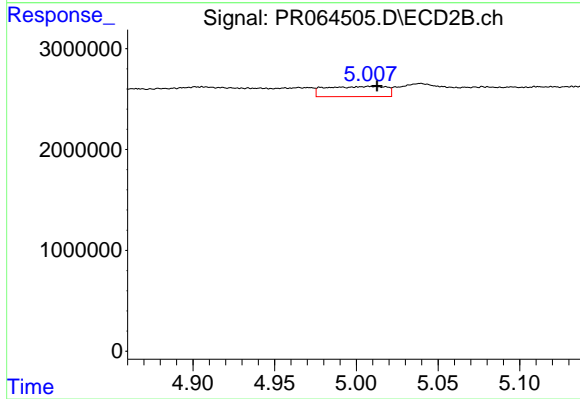
#25 AR-1248-5

R.T.: 5.039 min
 Delta R.T.: -0.016 min
 Response: 2647766
 Conc: 12.79 ng/ml



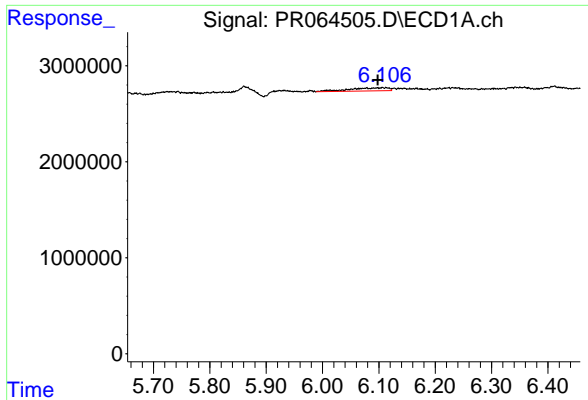
#26 AR-1254-1

R.T.: 5.861 min
 Delta R.T.: 0.003 min
 Response: 2340561
 Conc: 11.53 ng/ml



#26 AR-1254-1

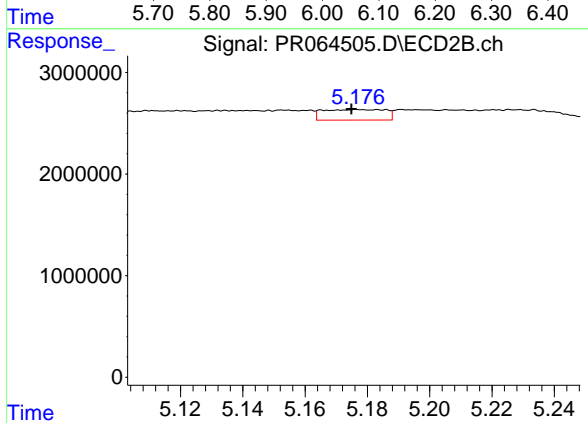
R.T.: 5.008 min
 Delta R.T.: -0.005 min
 Response: 2618727
 Conc: 8.46 ng/ml



#27 AR-1254-2

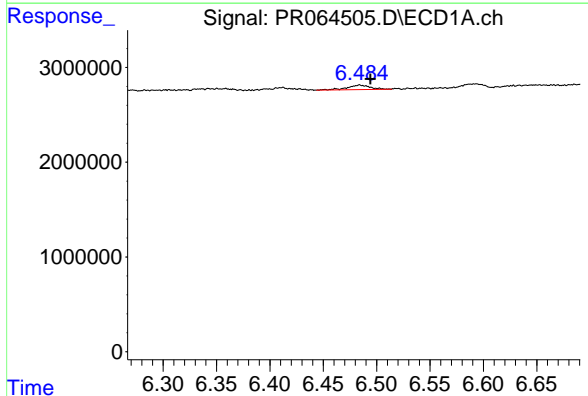
R.T.: 6.106 min
 Delta R.T.: 0.008 min
 Response: 1626401
 Conc: 5.29 ng/ml

Instrument :
 ECD_R
 ClientSampleId :



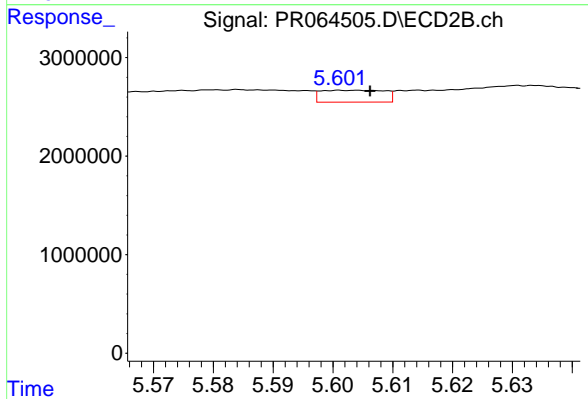
#27 AR-1254-2

R.T.: 5.177 min
 Delta R.T.: 0.002 min
 Response: 1446650
 Conc: 5.39 ng/ml



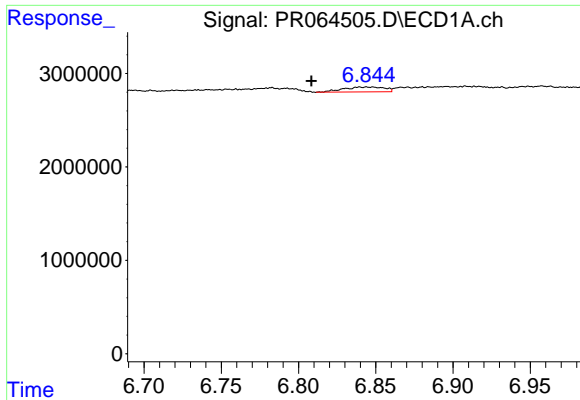
#28 AR-1254-3

R.T.: 6.484 min
 Delta R.T.: -0.010 min
 Response: 682663
 Conc: 2.17 ng/ml



#28 AR-1254-3

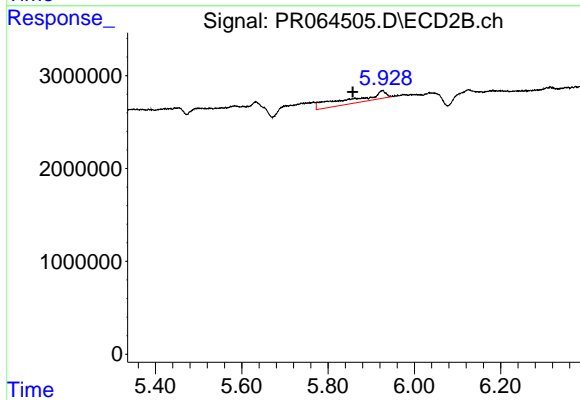
R.T.: 5.603 min
 Delta R.T.: -0.003 min
 Response: 889294
 Conc: 2.10 ng/ml



#29 AR-1254-4

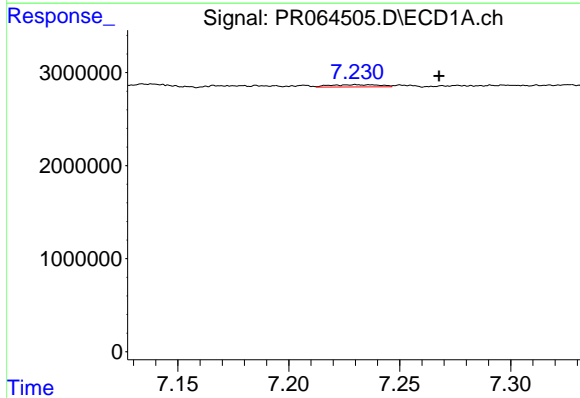
R.T.: 6.845 min
 Delta R.T.: 0.036 min
 Response: 965620
 Conc: 4.47 ng/ml

Instrument :
 ECD_R
 ClientSampleId :



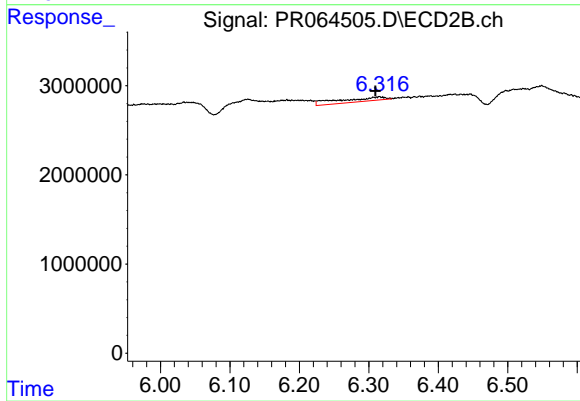
#29 AR-1254-4

R.T.: 5.926 min
 Delta R.T.: 0.069 min
 Response: 5168605
 Conc: 19.57 ng/ml



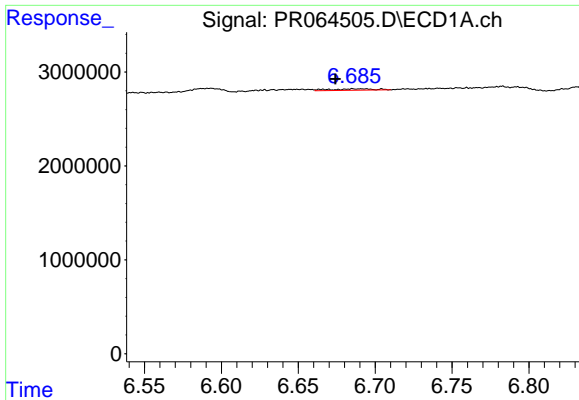
#30 AR-1254-5

R.T.: 7.230 min
 Delta R.T.: -0.037 min
 Response: 380624
 Conc: 1.63 ng/ml



#30 AR-1254-5

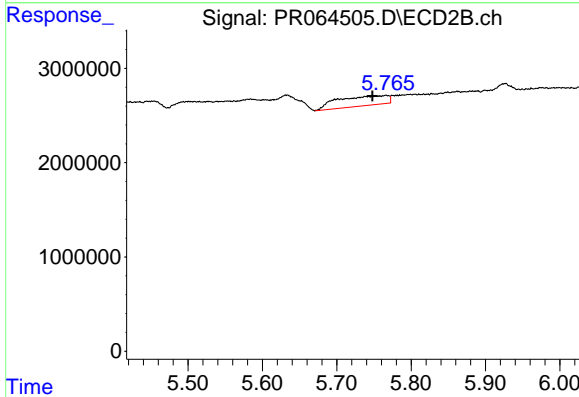
R.T.: 6.315 min
 Delta R.T.: 0.006 min
 Response: 2100422
 Conc: 5.56 ng/ml



#31 AR-1260-1

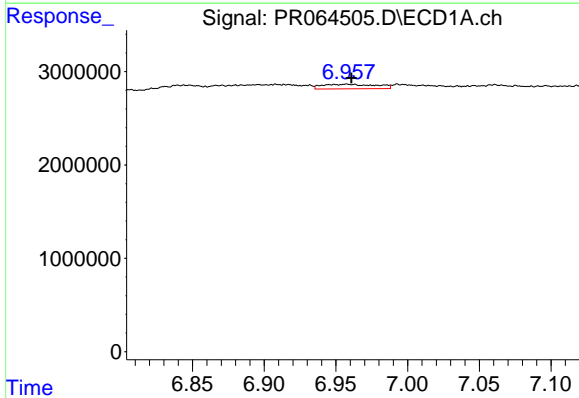
R.T.: 6.686 min
 Delta R.T.: 0.012 min
 Response: 288381
 Conc: 1.21 ng/ml

Instrument :
 ECD_R
 ClientSampleId :



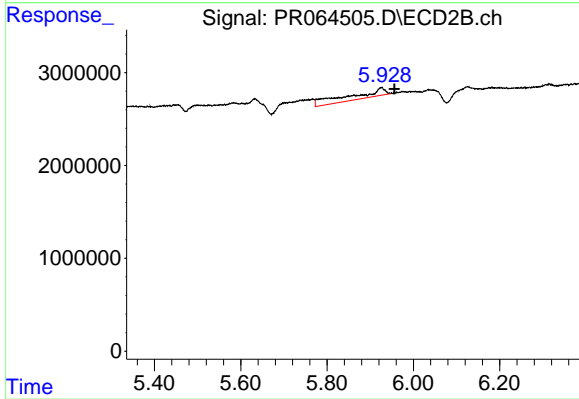
#31 AR-1260-1

R.T.: 5.766 min
 Delta R.T.: 0.018 min
 Response: 4880897
 Conc: 16.70 ng/ml



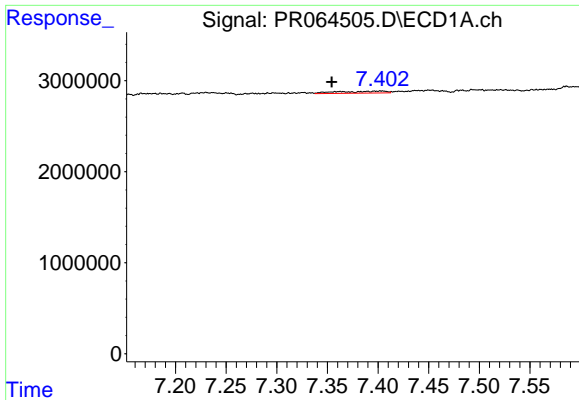
#32 AR-1260-2

R.T.: 6.957 min
 Delta R.T.: -0.003 min
 Response: 1281542
 Conc: 4.69 ng/ml



#32 AR-1260-2

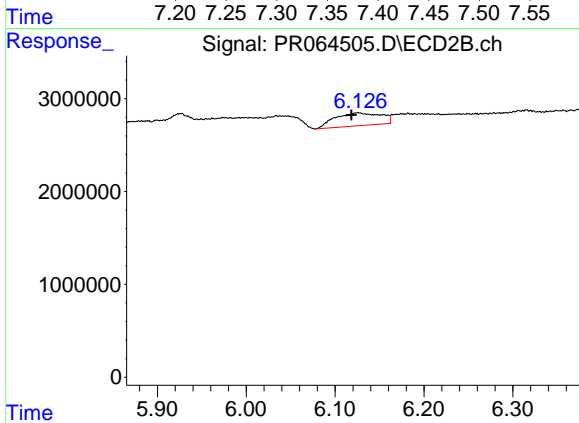
R.T.: 5.926 min
 Delta R.T.: -0.030 min
 Response: 5168605
 Conc: 14.74 ng/ml



#33 AR-1260-3

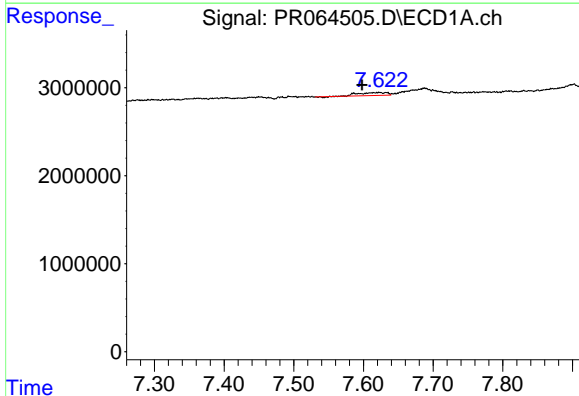
R.T.: 7.403 min
 Delta R.T.: 0.049 min
 Response: 730491
 Conc: 3.68 ng/ml

Instrument :
 ECD_R
 ClientSampleId :



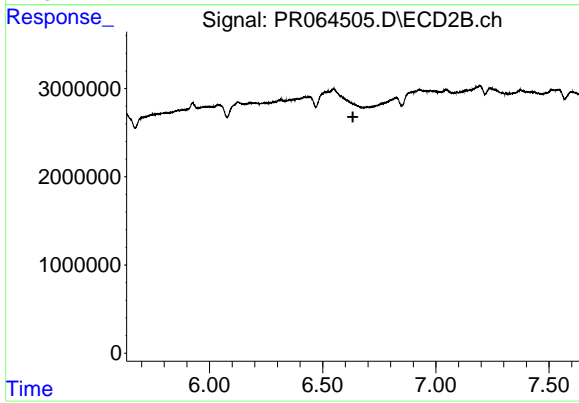
#33 AR-1260-3

R.T.: 6.126 min
 Delta R.T.: 0.007 min
 Response: 4962456
 Conc: 14.73 ng/ml



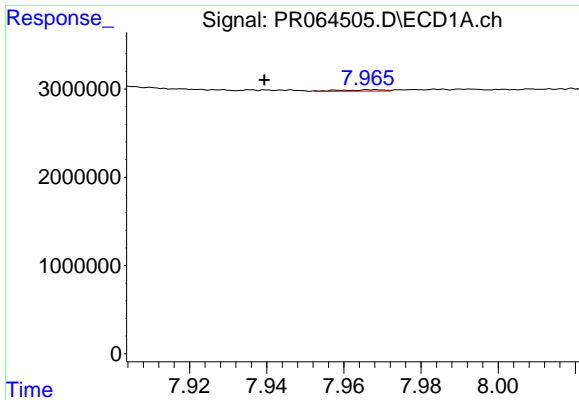
#34 AR-1260-4

R.T.: 7.623 min
 Delta R.T.: 0.025 min
 Response: 948292
 Conc: 4.29 ng/ml



#34 AR-1260-4

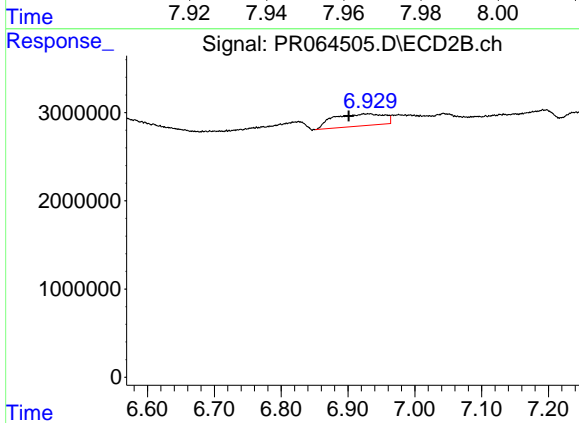
R.T.: 0.000 min
 Exp R.T. : 6.633 min
 Response: 0
 Conc: N.D.



#35 AR-1260-5

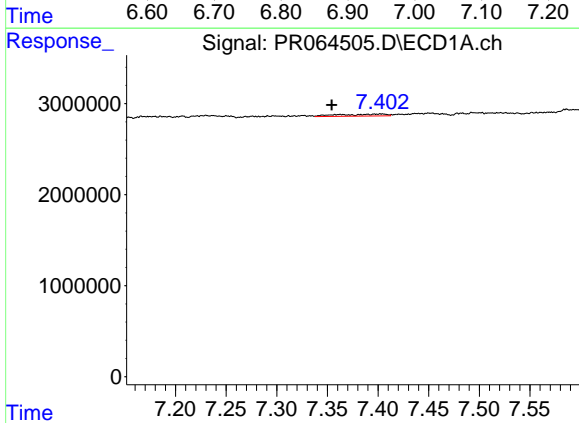
R.T.: 7.968 min
 Delta R.T.: 0.028 min
 Response: 125122
 Conc: 0.30 ng/ml

Instrument :
 ECD_R
 ClientSampleId :



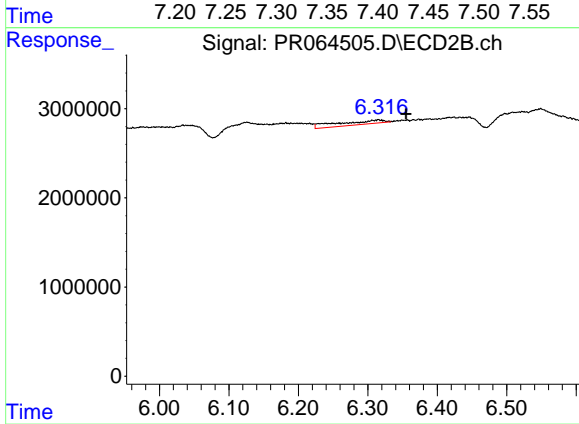
#35 AR-1260-5

R.T.: 6.931 min
 Delta R.T.: 0.030 min
 Response: 7267910
 Conc: 11.53 ng/ml



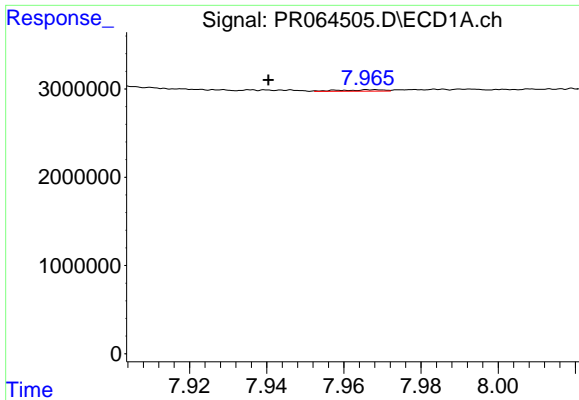
#36 AR-1262-1

R.T.: 7.403 min
 Delta R.T.: 0.049 min
 Response: 730491
 Conc: 2.54 ng/ml



#36 AR-1262-1

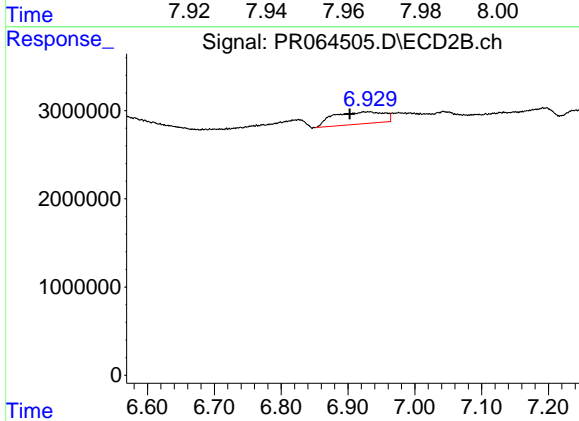
R.T.: 6.315 min
 Delta R.T.: -0.040 min
 Response: 2100422
 Conc: 5.41 ng/ml



#37 AR-1262-2

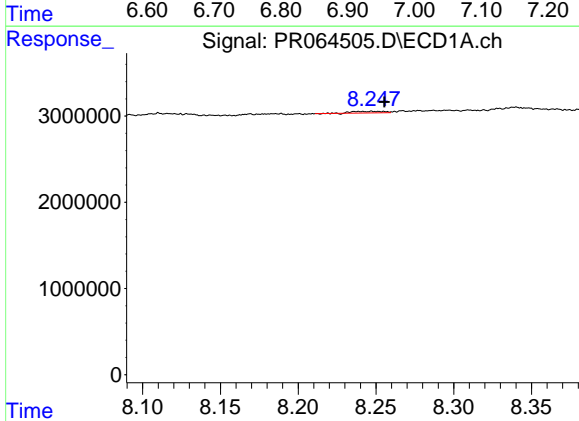
R.T.: 7.968 min
 Delta R.T.: 0.027 min
 Response: 125122
 Conc: 0.27 ng/ml

Instrument :
 ECD_R
 ClientSampleId :



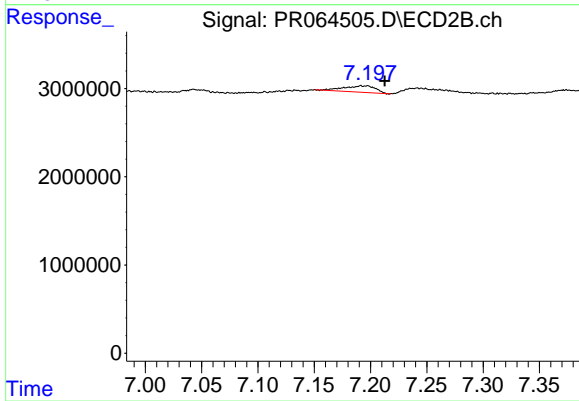
#37 AR-1262-2

R.T.: 6.931 min
 Delta R.T.: 0.029 min
 Response: 7267910
 Conc: 10.46 ng/ml



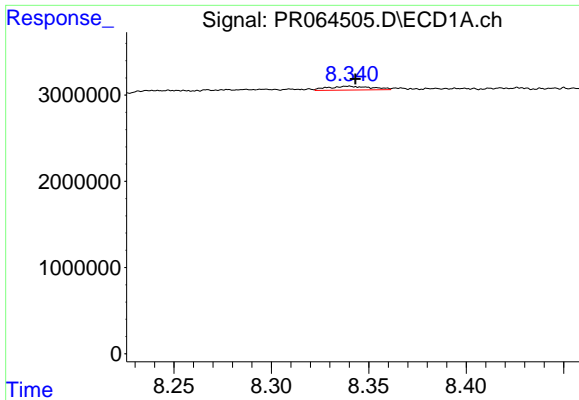
#38 AR-1262-3

R.T.: 8.248 min
 Delta R.T.: -0.008 min
 Response: 269004
 Conc: 0.87 ng/ml



#38 AR-1262-3

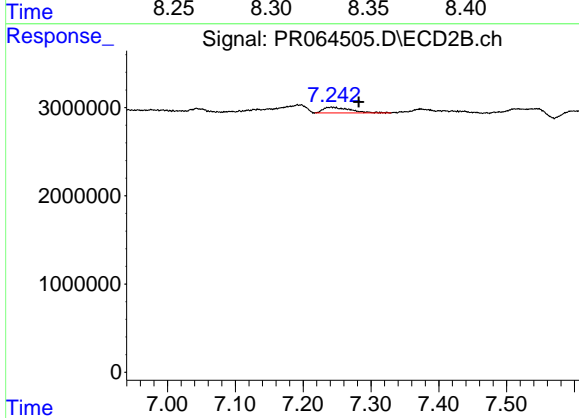
R.T.: 7.194 min
 Delta R.T.: -0.019 min
 Response: 1400615
 Conc: 5.64 ng/ml



#39 AR-1262-4

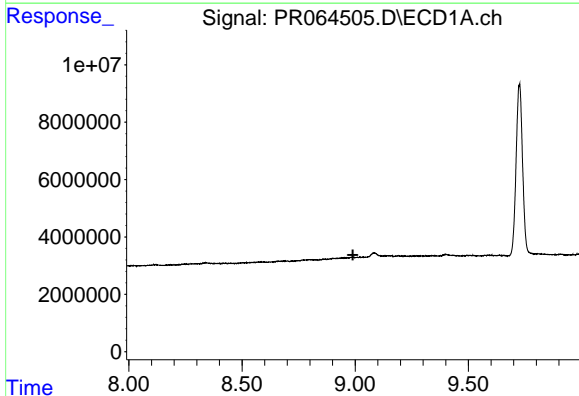
R.T.: 8.340 min
 Delta R.T.: -0.004 min
 Response: 683656
 Conc: 2.96 ng/ml

Instrument :
 ECD_R
 ClientSampleId :



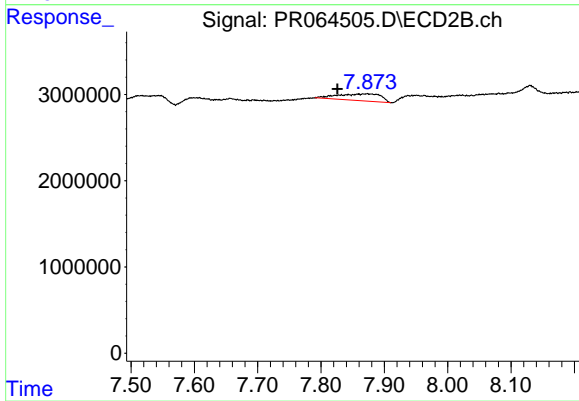
#39 AR-1262-4

R.T.: 7.241 min
 Delta R.T.: -0.041 min
 Response: 1746875
 Conc: 3.46 ng/ml



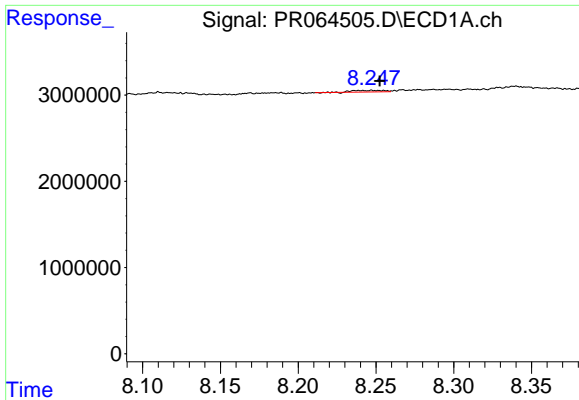
#40 AR-1262-5

R.T.: 0.000 min
 Exp R.T. : 8.990 min
 Response: 0
 Conc: N.D.



#40 AR-1262-5

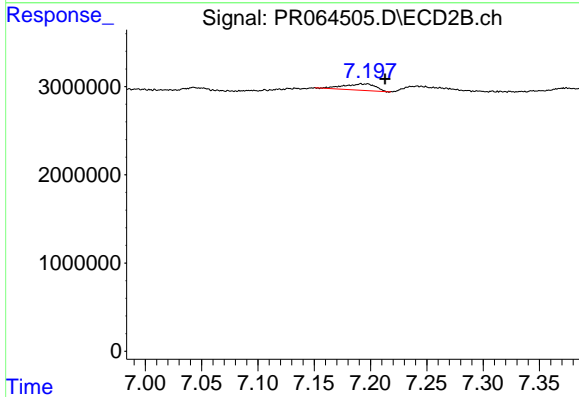
R.T.: 7.872 min
 Delta R.T.: 0.046 min
 Response: 3653379
 Conc: 16.16 ng/ml



#41 AR-1268-1

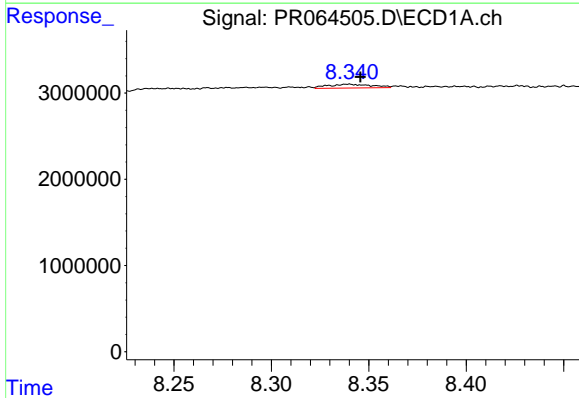
R.T.: 8.248 min
 Delta R.T.: -0.005 min
 Response: 269004
 Conc: 0.51 ng/ml

Instrument :
 ECD_R
 ClientSampleId :



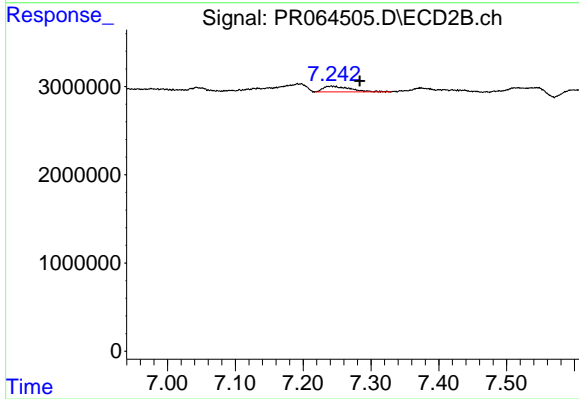
#41 AR-1268-1

R.T.: 7.194 min
 Delta R.T.: -0.019 min
 Response: 1400615
 Conc: 1.95 ng/ml



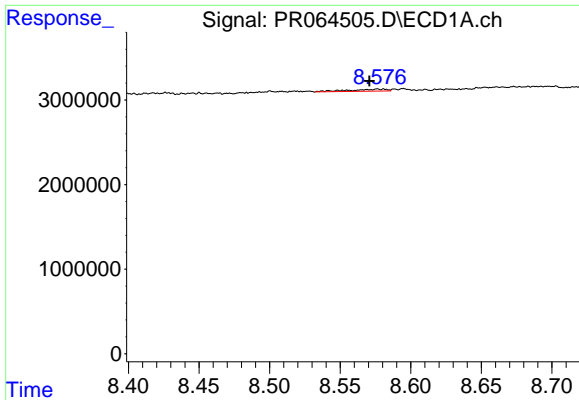
#42 AR-1268-2

R.T.: 8.340 min
 Delta R.T.: -0.006 min
 Response: 683656
 Conc: 1.46 ng/ml



#42 AR-1268-2

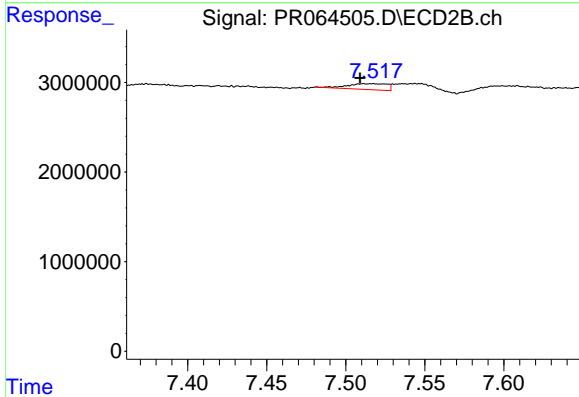
R.T.: 7.241 min
 Delta R.T.: -0.042 min
 Response: 1746875
 Conc: 2.44 ng/ml



#43 AR-1268-3

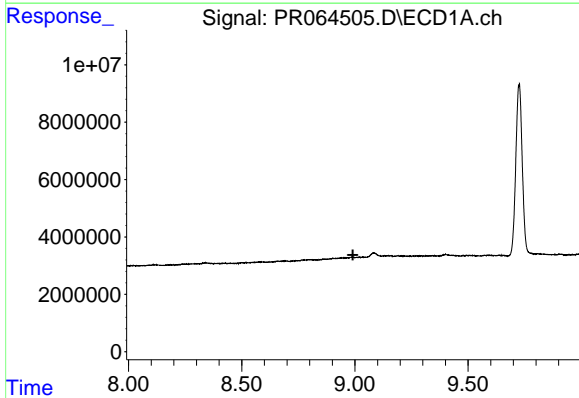
R.T.: 8.580 min
 Delta R.T.: 0.010 min
 Response: 434755
 Conc: 1.06 ng/ml

Instrument :
 ECD_R
 ClientSampleId :



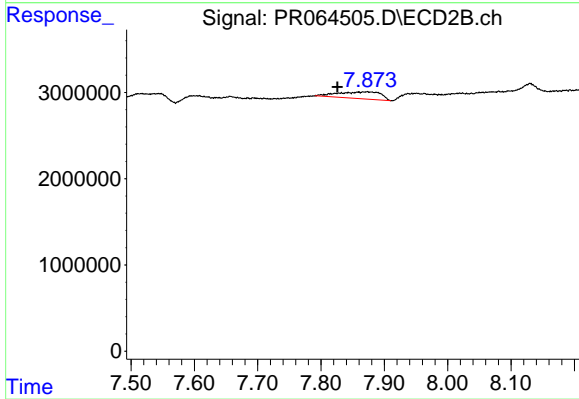
#43 AR-1268-3

R.T.: 7.516 min
 Delta R.T.: 0.007 min
 Response: 1136227
 Conc: 1.86 ng/ml



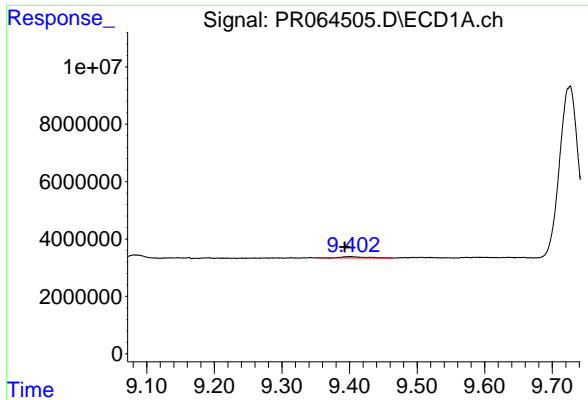
#44 AR-1268-4

R.T.: 0.000 min
 Exp R.T. : 8.991 min
 Response: 0
 Conc: N.D.



#44 AR-1268-4

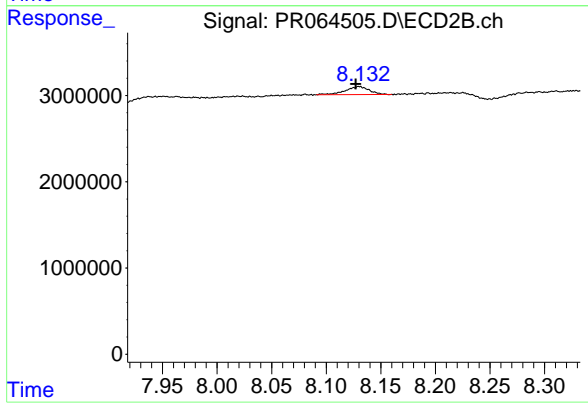
R.T.: 7.872 min
 Delta R.T.: 0.046 min
 Response: 3653379
 Conc: 14.57 ng/ml



#45 AR-1268-5

R.T.: 9.401 min
 Delta R.T.: 0.009 min
 Response: 1114705
 Conc: 0.86 ng/ml

Instrument :
 ECD_R
 ClientSampleId :



#45 AR-1268-5

R.T.: 8.130 min
 Delta R.T.: 0.003 min
 Response: 1416779
 Conc: 0.78 ng/ml