

Data Path : Z:\pestpcbsrv\HPCHEM1\ECD_R\Data\PR112423\
 Data File : PR064565.D
 Signal(s) : Signal #1: ECD1A.ch Signal #2: ECD2B.ch
 Acq On : 24 Nov 2023 15:10
 Operator : AJ\MA
 Sample : 05456-02
 Misc :
 ALS Vial : 10 Sample Multiplier: 1

Instrument :
 ECD_R
 ClientSampleId :

Integration File signal 1: autoint1.e
 Integration File signal 2: autoint2.e
 Quant Time: Nov 24 21:41:27 2023
 Quant Method : Z:\pestpcbsrv\HPCHEM1\ECD_R\Method\PR112023CLP.M
 Quant Title : GC EXTRACTABLES
 QLast Update : Tue Nov 21 05:53:23 2023
 Response via : Initial Calibration
 Integrator: ChemStation

Volume Inj. : 1 µl
 Signal #1 Phase : ZB MR1 Signal #2 Phase: ZB MR2
 Signal #1 Info : 30Mx0.32mmx 0.5µm Signal #2 Info : 30M x 0.32mm x 0.25µm

Compound	RT#1	RT#2	Resp#1	Resp#2	ng/ml	ng/ml
System Monitoring Compounds						
1) SA Tetrachlo...	3.703	3.009	107.0E6	97522499	17.560	17.146
2) SA Decachlor...	9.723	8.388	151.9E6	152.9E6	43.024	35.315
Target Compounds						
3) L1 AR-1016-1	4.939	4.155	12833476	14874027	70.415	77.944
4) L1 AR-1016-2	4.964	4.178	11235917	9795782	41.911	36.931
5) L1 AR-1016-3	5.032	4.356	17443185	19455804	104.445	136.341 #
6) L1 AR-1016-4	5.105	4.408	45843074	11815461	335.872	110.570 #
7) L1 AR-1016-5	5.447	4.636	1878555	5041249	14.184	35.101 #
8) L2 AR-1221-1	3.924	3.234	1116631	926999	16.093	14.433
9) L2 AR-1221-2	4.018	3.319	1184292	6708159	25.029	151.298 #
10) L2 AR-1221-3	4.114	3.409	3146624	781251	20.161	5.110 #
11) L3 AR-1232-1	4.114	3.409	3146624	781251	24.517	6.198 #
12) L3 AR-1232-2	4.655	4.178	14764652	9795782	231.232	80.646 #
13) L3 AR-1232-3	4.964	4.356	11235917	19455804	94.227	304.677 #
14) L3 AR-1232-4	5.105	4.461	45843074	16001392	775.264	278.710 #
15) L3 AR-1232-5	5.221	4.636	19278182	5041249	436.305	80.746 #
16) L4 AR-1242-1	4.939	4.155	12833476	14874027	83.739	91.522
17) L4 AR-1242-2	4.964	4.178	11235917	9795782	50.106	43.896
18) L4 AR-1242-3	5.032	4.356	17443185	19455804	123.906	162.069 #
19) L4 AR-1242-4	5.105	4.461	45843074	16001392	398.870	139.751 #
20) L4 AR-1242-5	5.933	5.013	15153728	61189098	131.493	412.778 #
21) L5 AR-1248-1	4.939	4.155	12833476	14874027	108.654	120.450
22) L5 AR-1248-2	5.221	4.408	19278182	11815461	118.048	72.152 #
23) L5 AR-1248-3	5.447	4.461	1878555	16001392	9.954	93.170 #
24) L5 AR-1248-4	5.888	4.636	14925686	5041249	73.014	24.267 #
25) L5 AR-1248-5	5.933	5.056	15153728	13261464	74.856	64.056
26) L6 AR-1254-1	5.860	5.013	47076084	61189098	231.830	197.606
27) L6 AR-1254-2	6.099	5.175	41433360	30651912	134.874	114.155
28) L6 AR-1254-3	6.498	5.605	64941641	46807840	206.801	110.374 #
29) L6 AR-1254-4	6.811	5.857	12572628	17595363	58.238	66.608
30) L6 AR-1254-5	7.269	6.310	34594920	48601924	148.035	128.691
31) L7 AR-1260-1	6.677	5.749	18584366	33800305	77.750	115.628 #
32) L7 AR-1260-2	6.952	5.957	84074045	21372673	307.390	60.949 #
33) L7 AR-1260-3	7.358	6.116	31395523	25026342	157.992	74.297 #
34) L7 AR-1260-4	7.582	6.634	14135381	8344888	63.984	31.057 #
35) L7 AR-1260-5	7.944	6.902	20077106	20375155	48.370	32.338 #
36) L8 AR-1262-1	7.358	6.353	31395523	8278483	109.133	21.329 #
37) L8 AR-1262-2	7.944	6.902	20077106	20375155	43.293	29.318 #
38) L8 AR-1262-3	8.257	7.213	16030007	13279120	51.939	53.428
39) L8 AR-1262-4	8.347	7.282	6821338	34812523	29.580	68.978 #
40) L8 AR-1262-5	8.993	7.826	5679129	4927696	36.078	21.793 #
41) L9 AR-1268-1	8.257	7.213	16030007	13279120	30.249	18.490 #

Data Path : Z:\pestpcbsrv\HPCHEM1\ECD_R\Data\PR112423\
 Data File : PR064565.D
 Signal(s) : Signal #1: ECD1A.ch Signal #2: ECD2B.ch
 Acq On : 24 Nov 2023 15:10
 Operator : AJ\MA
 Sample : 05456-02
 Misc :
 ALS Vial : 10 Sample Multiplier: 1

Instrument :
 ECD_R
 ClientSampleId :

Integration File signal 1: autoint1.e
 Integration File signal 2: autoint2.e
 Quant Time: Nov 24 21:41:27 2023
 Quant Method : Z:\pestpcbsrv\HPCHEM1\ECD_R\Method\PR112023CLP.M
 Quant Title : GC EXTRACTABLES
 QLast Update : Tue Nov 21 05:53:23 2023
 Response via : Initial Calibration
 Integrator: ChemStation

Volume Inj. : 1 µl
 Signal #1 Phase : ZB MR1 Signal #2 Phase: ZB MR2
 Signal #1 Info : 30Mx0.32mmx 0.5µm Signal #2 Info : 30M x 0.32mm x 0.25µm

	Compound	RT#1	RT#2	Resp#1	Resp#2	ng/ml	ng/ml
42)	L9 AR-1268-2	8.347	7.282	6821338	34812523	14.566	48.572 #
43)	L9 AR-1268-3	8.574	7.509	20933156	25007549	51.071	40.893
44)	L9 AR-1268-4	8.993	7.826	5679129	4927696	33.423	19.647 #
45)	L9 AR-1268-5	9.398	8.128	52083801	52746758	40.266	28.988 #

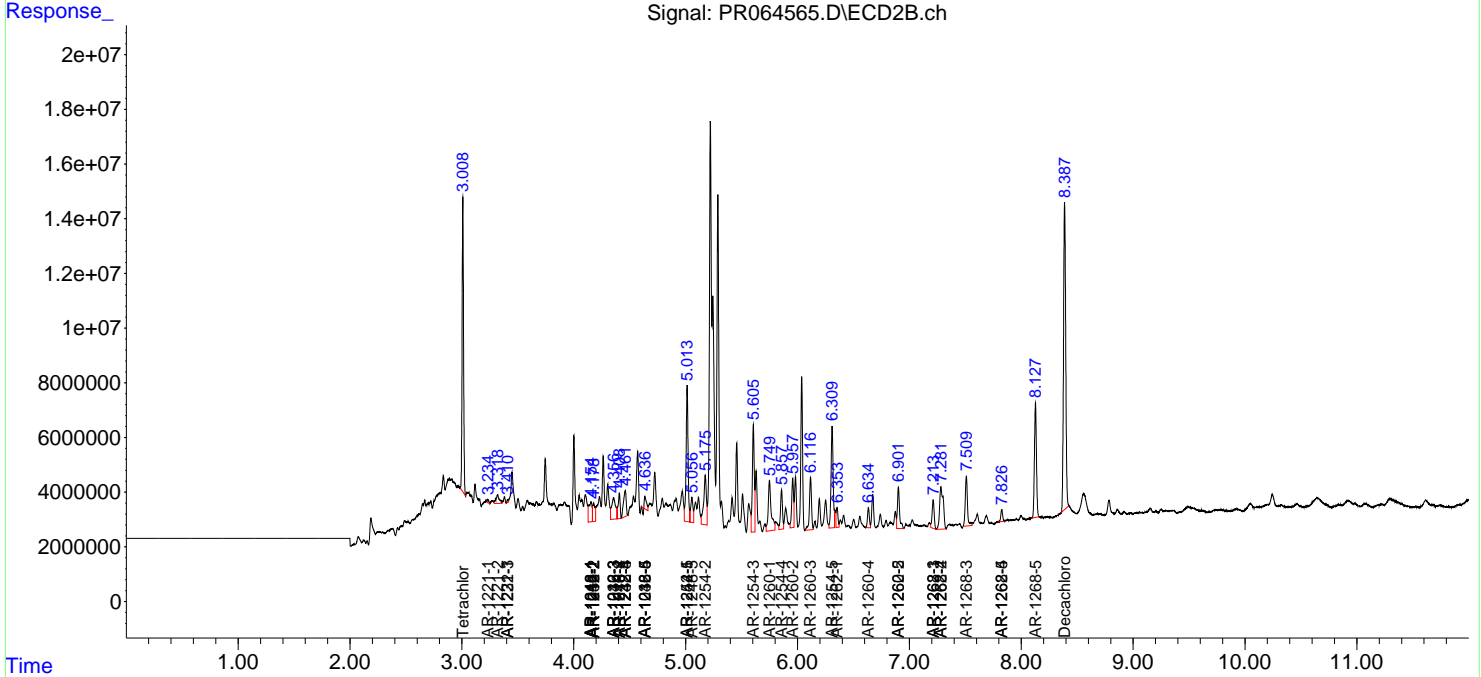
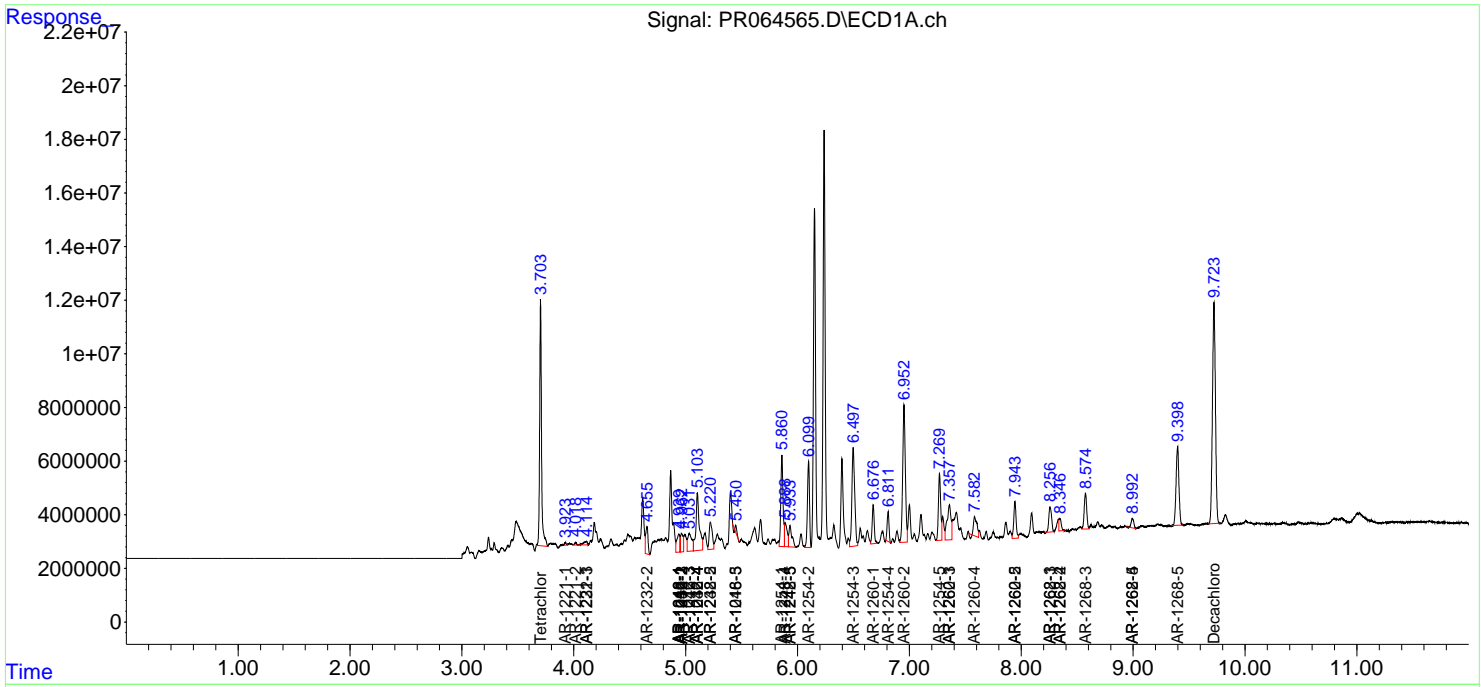
(f)=RT Delta > 1/2 Window (#)=Amounts differ by > 25% (m)=manual int.

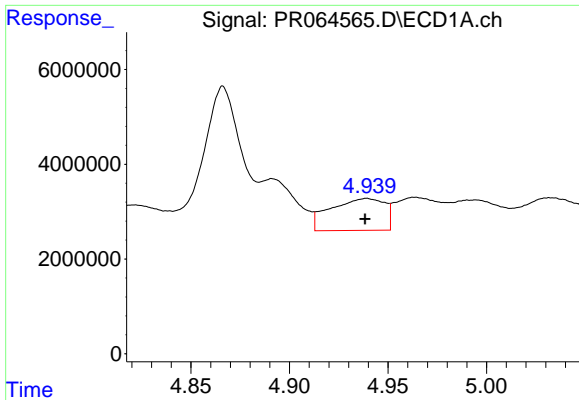
Data Path : Z:\pestpcbsrv\HPCHEM1\ECD_R\Data\PR112423\
 Data File : PR064565.D
 Signal(s) : Signal #1: ECD1A.ch Signal #2: ECD2B.ch
 Acq On : 24 Nov 2023 15:10
 Operator : AJ\MA
 Sample : 05456-02
 Misc :
 ALS Vial : 10 Sample Multiplier: 1

Instrument :
 ECD_R
 ClientSampleId :

Integration File signal 1: autoint1.e
 Integration File signal 2: autoint2.e
 Quant Time: Nov 24 21:41:27 2023
 Quant Method : Z:\pestpcbsrv\HPCHEM1\ECD_R\Method\PR112023CLP.M
 Quant Title : GC EXTRACTABLES
 QLast Update : Tue Nov 21 05:53:23 2023
 Response via : Initial Calibration
 Integrator: ChemStation

Volume Inj. : 1 µl
 Signal #1 Phase : ZB MR1 Signal #2 Phase: ZB MR2
 Signal #1 Info : 30Mx0.32mmx 0.5µm Signal #2 Info : 30M x 0.32mm x 0.25µm

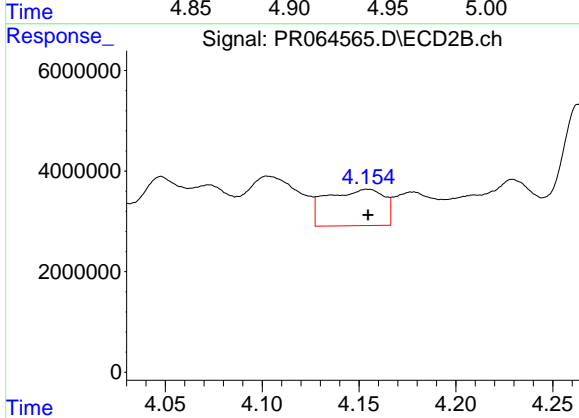




#3 AR-1016-1

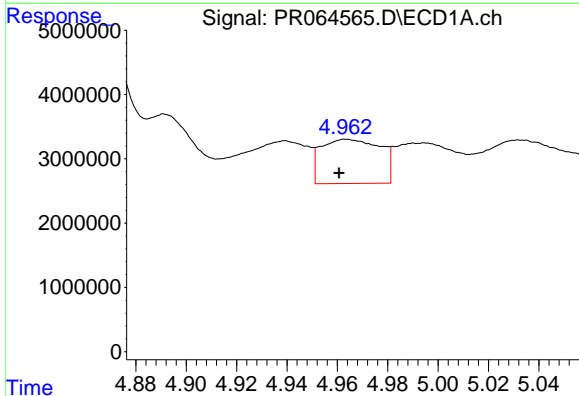
R.T.: 4.939 min
 Delta R.T.: 0.000 min
 Response: 12833476
 Conc: 70.41 ng/ml

Instrument :
 ECD_R
 ClientSampleId :



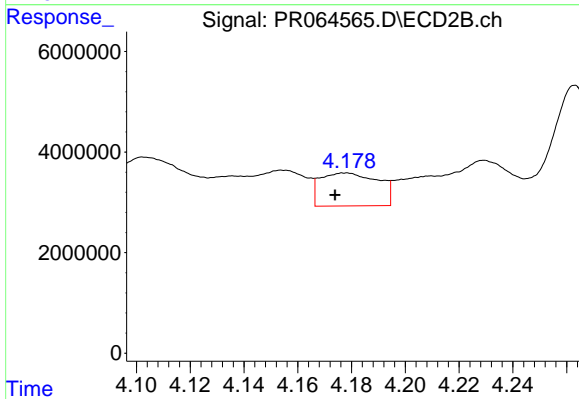
#3 AR-1016-1

R.T.: 4.155 min
 Delta R.T.: 0.000 min
 Response: 14874027
 Conc: 77.94 ng/ml



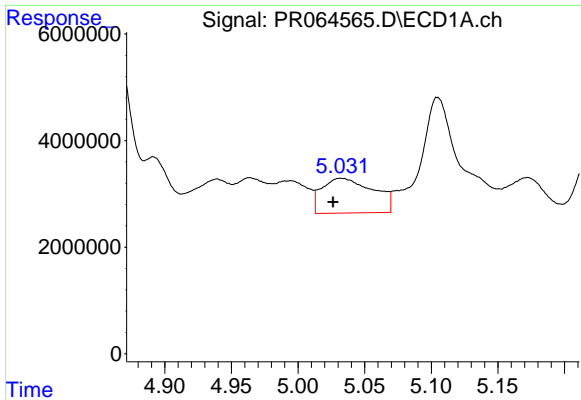
#4 AR-1016-2

R.T.: 4.964 min
 Delta R.T.: 0.003 min
 Response: 11235917
 Conc: 41.91 ng/ml



#4 AR-1016-2

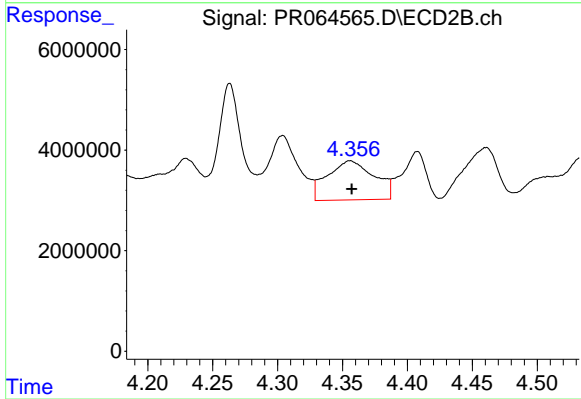
R.T.: 4.178 min
 Delta R.T.: 0.004 min
 Response: 9795782
 Conc: 36.93 ng/ml



#5 AR-1016-3

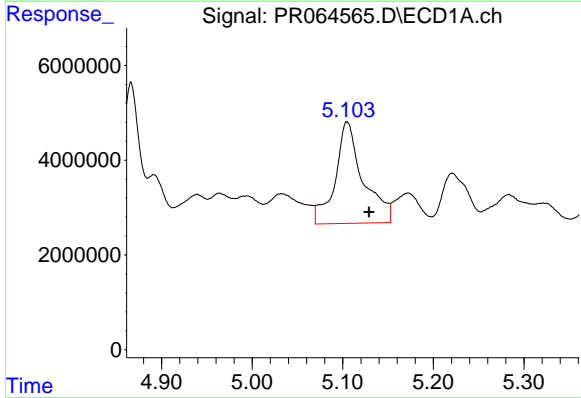
R.T.: 5.032 min
 Delta R.T.: 0.006 min
 Response: 17443185
 Conc: 104.45 ng/ml

Instrument :
 ECD_R
 ClientSampleId :



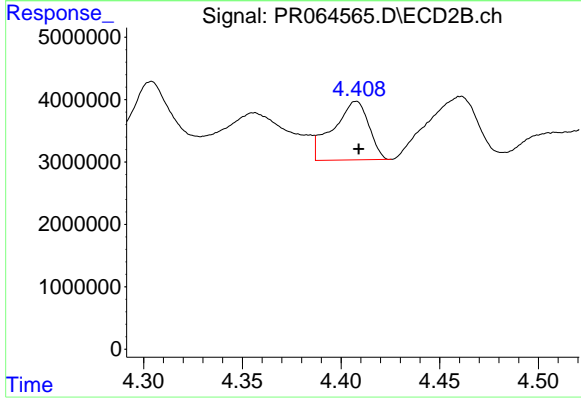
#5 AR-1016-3

R.T.: 4.356 min
 Delta R.T.: -0.001 min
 Response: 19455804
 Conc: 136.34 ng/ml



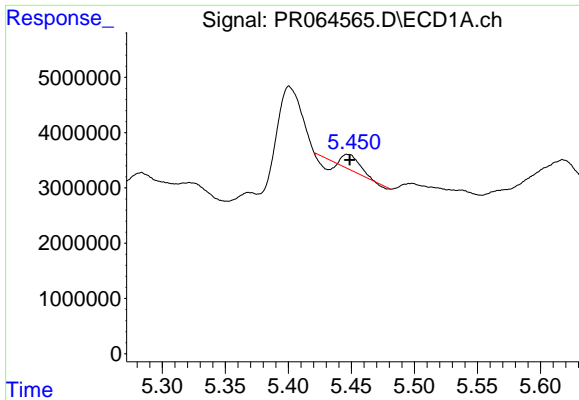
#6 AR-1016-4

R.T.: 5.105 min
 Delta R.T.: -0.024 min
 Response: 45843074
 Conc: 335.87 ng/ml



#6 AR-1016-4

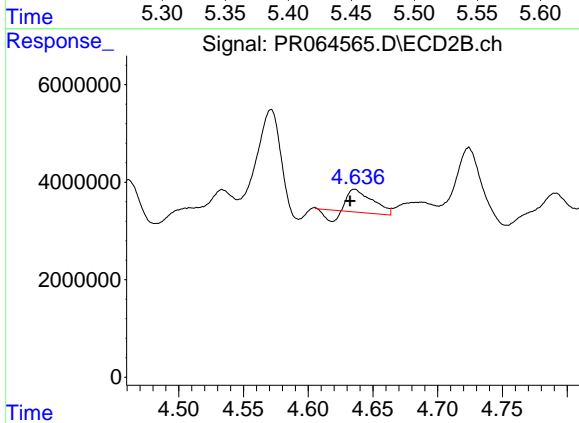
R.T.: 4.408 min
 Delta R.T.: -0.001 min
 Response: 11815461
 Conc: 110.57 ng/ml



#7 AR-1016-5

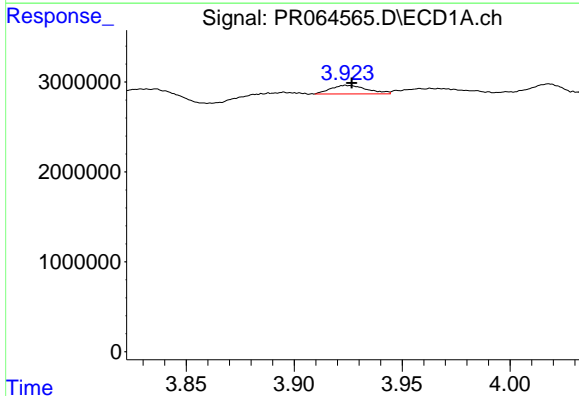
R.T.: 5.447 min
 Delta R.T.: -0.002 min
 Response: 1878555
 Conc: 14.18 ng/ml

Instrument :
 ECD_R
 ClientSampleId :



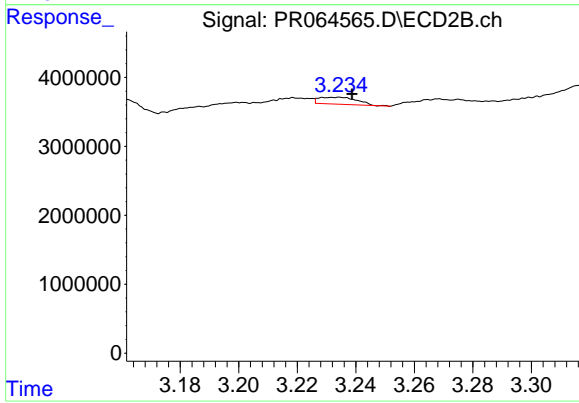
#7 AR-1016-5

R.T.: 4.636 min
 Delta R.T.: 0.003 min
 Response: 5041249
 Conc: 35.10 ng/ml



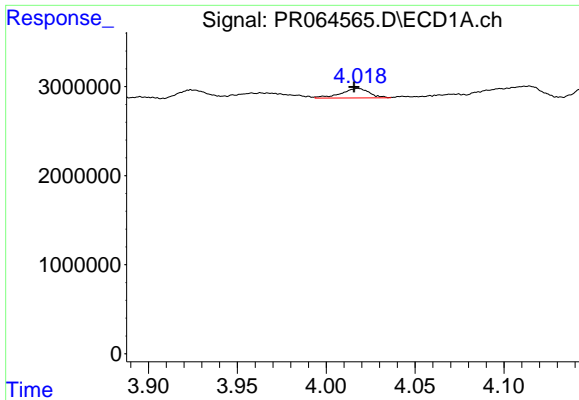
#8 AR-1221-1

R.T.: 3.924 min
 Delta R.T.: -0.002 min
 Response: 1116631
 Conc: 16.09 ng/ml



#8 AR-1221-1

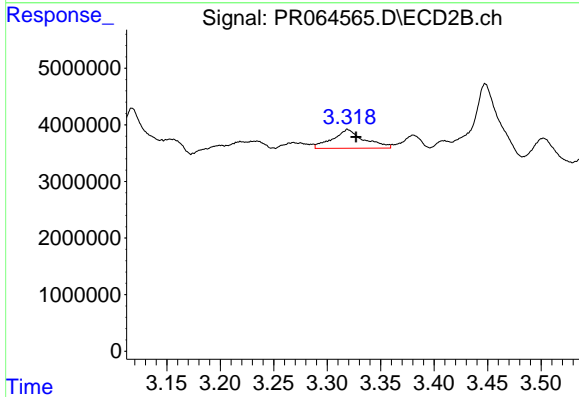
R.T.: 3.234 min
 Delta R.T.: -0.004 min
 Response: 926999
 Conc: 14.43 ng/ml



#9 AR-1221-2

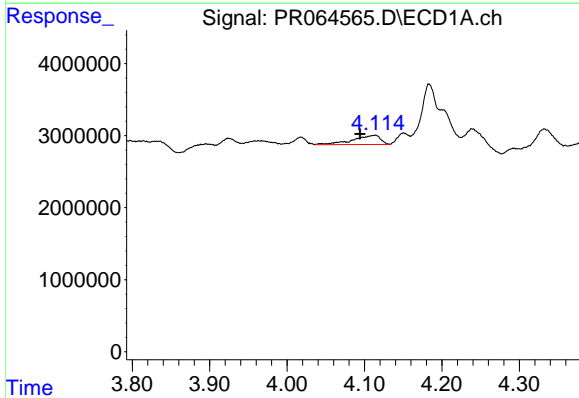
R.T.: 4.018 min
 Delta R.T.: 0.002 min
 Response: 1184292
 Conc: 25.03 ng/ml

Instrument :
 ECD_R
 ClientSampleId :



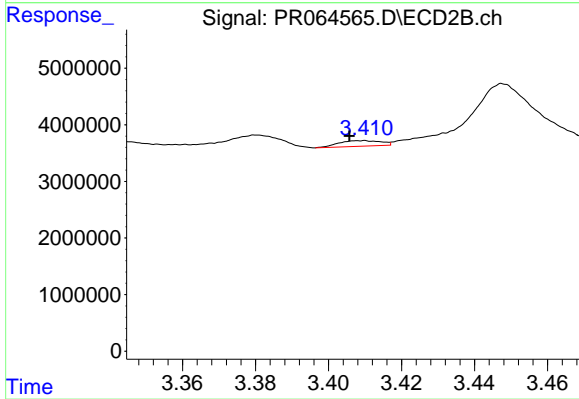
#9 AR-1221-2

R.T.: 3.319 min
 Delta R.T.: -0.008 min
 Response: 6708159
 Conc: 151.30 ng/ml



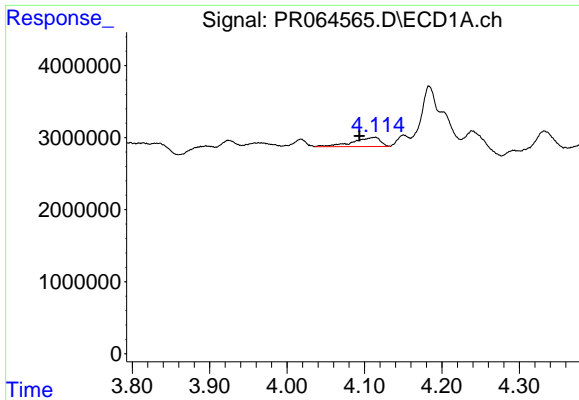
#10 AR-1221-3

R.T.: 4.114 min
 Delta R.T.: 0.020 min
 Response: 3146624
 Conc: 20.16 ng/ml



#10 AR-1221-3

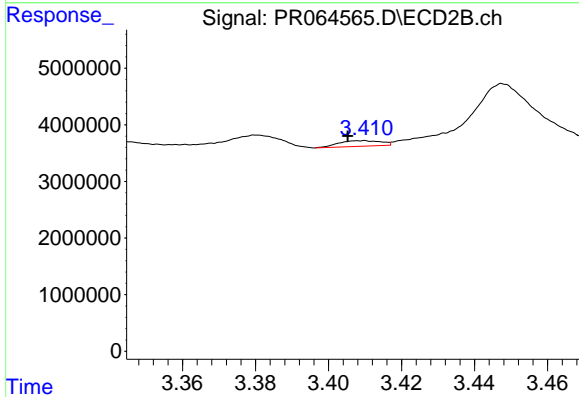
R.T.: 3.409 min
 Delta R.T.: 0.003 min
 Response: 781251
 Conc: 5.11 ng/ml



#11 AR-1232-1

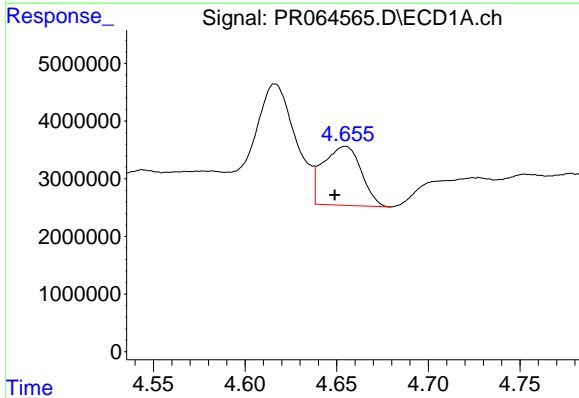
R.T.: 4.114 min
 Delta R.T.: 0.021 min
 Response: 3146624
 Conc: 24.52 ng/ml

Instrument :
 ECD_R
 ClientSampleId :



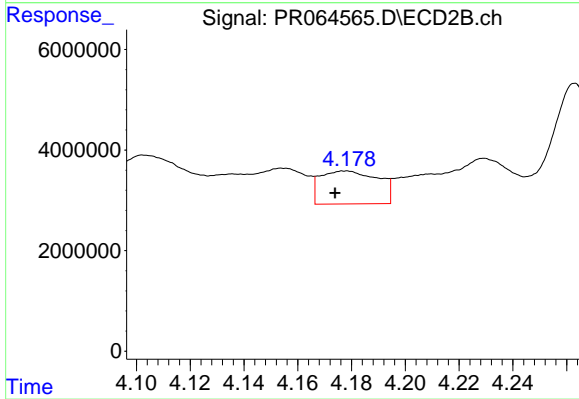
#11 AR-1232-1

R.T.: 3.409 min
 Delta R.T.: 0.004 min
 Response: 781251
 Conc: 6.20 ng/ml



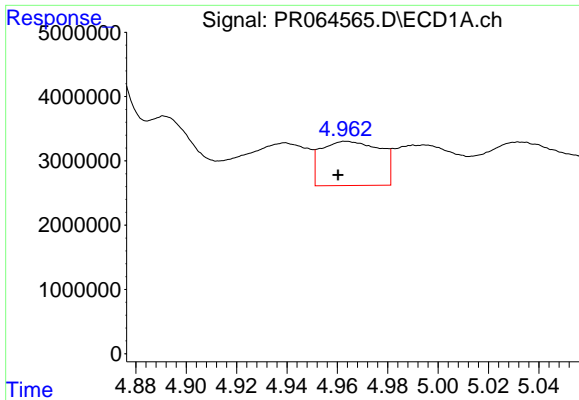
#12 AR-1232-2

R.T.: 4.655 min
 Delta R.T.: 0.006 min
 Response: 14764652
 Conc: 231.23 ng/ml



#12 AR-1232-2

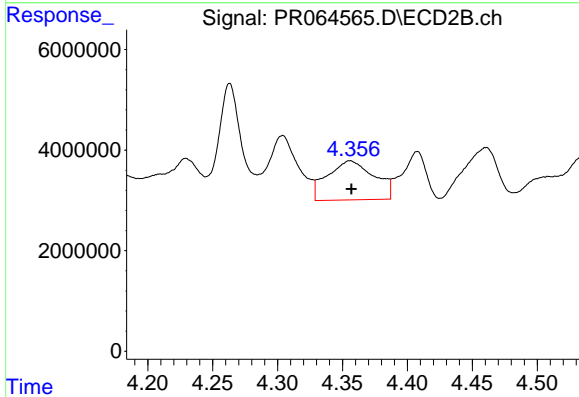
R.T.: 4.178 min
 Delta R.T.: 0.004 min
 Response: 9795782
 Conc: 80.65 ng/ml



#13 AR-1232-3

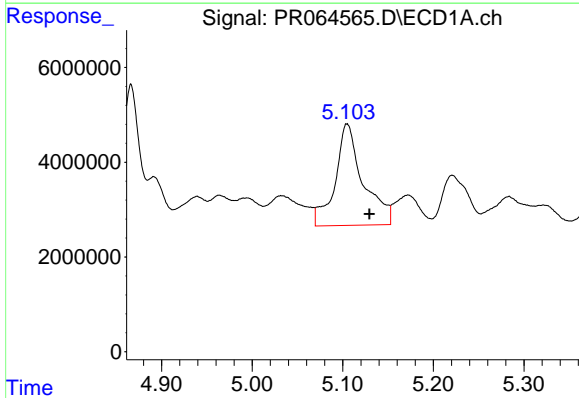
R.T.: 4.964 min
 Delta R.T.: 0.003 min
 Response: 11235917
 Conc: 94.23 ng/ml

Instrument :
 ECD_R
 ClientSampleId :



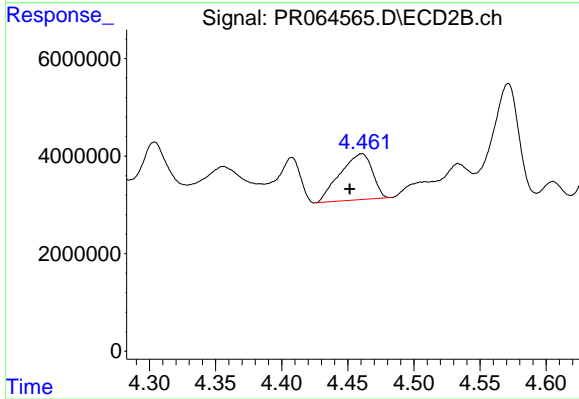
#13 AR-1232-3

R.T.: 4.356 min
 Delta R.T.: 0.000 min
 Response: 19455804
 Conc: 304.68 ng/ml



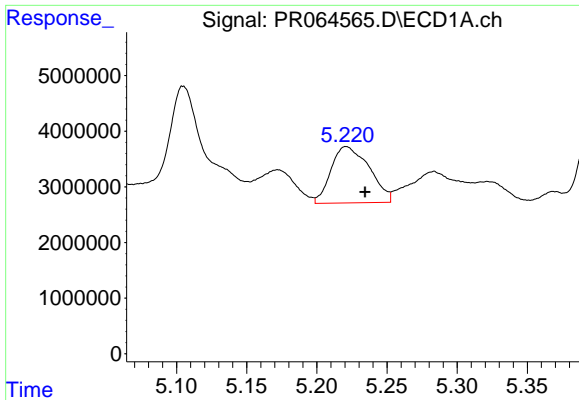
#14 AR-1232-4

R.T.: 5.105 min
 Delta R.T.: -0.025 min
 Response: 45843074
 Conc: 775.26 ng/ml



#14 AR-1232-4

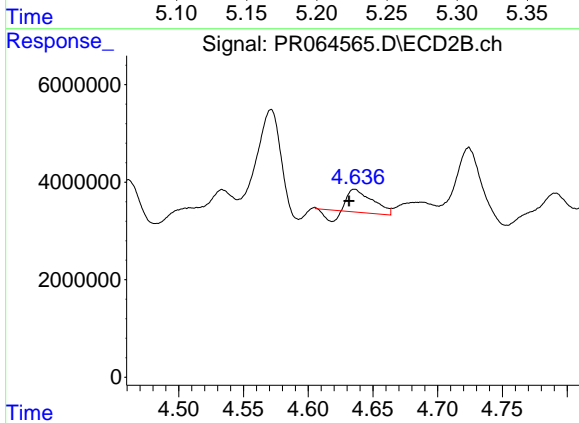
R.T.: 4.461 min
 Delta R.T.: 0.009 min
 Response: 16001392
 Conc: 278.71 ng/ml



#15 AR-1232-5

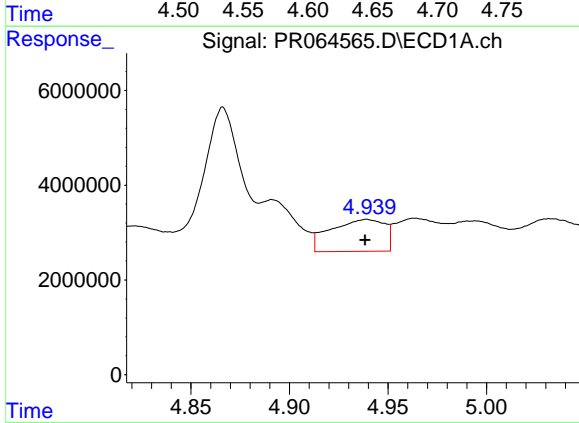
R.T.: 5.221 min
 Delta R.T.: -0.013 min
 Response: 19278182
 Conc: 436.31 ng/ml

Instrument :
 ECD_R
 ClientSampleId :



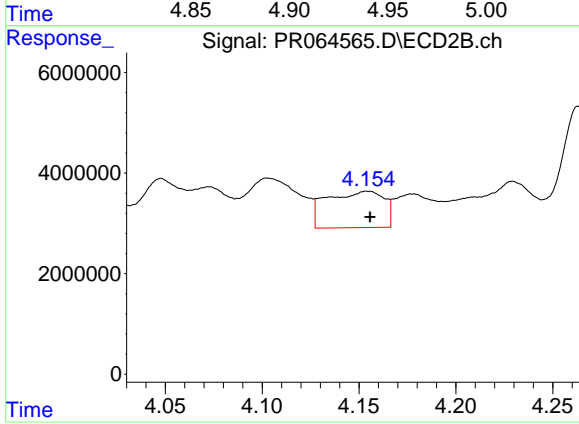
#15 AR-1232-5

R.T.: 4.636 min
 Delta R.T.: 0.004 min
 Response: 5041249
 Conc: 80.75 ng/ml



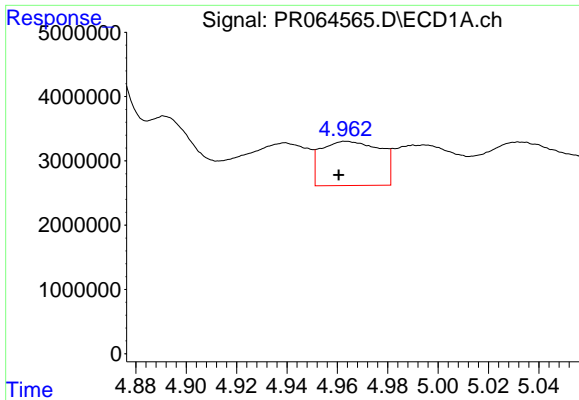
#16 AR-1242-1

R.T.: 4.939 min
 Delta R.T.: 0.000 min
 Response: 12833476
 Conc: 83.74 ng/ml



#16 AR-1242-1

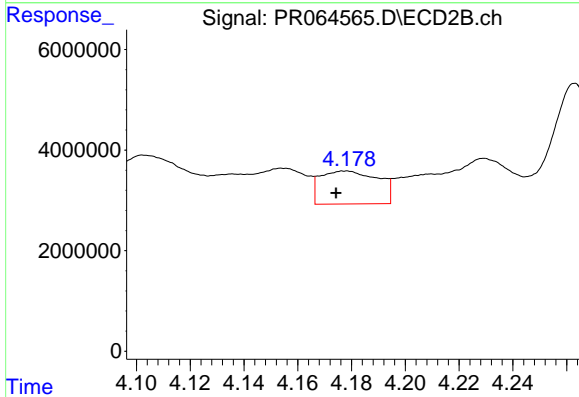
R.T.: 4.155 min
 Delta R.T.: -0.001 min
 Response: 14874027
 Conc: 91.52 ng/ml



#17 AR-1242-2

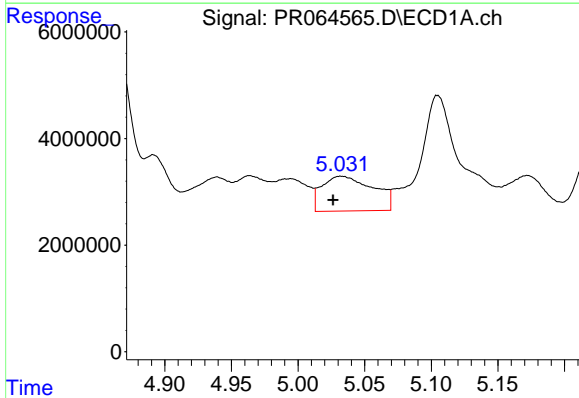
R.T.: 4.964 min
 Delta R.T.: 0.003 min
 Response: 11235917
 Conc: 50.11 ng/ml

Instrument :
 ECD_R
 ClientSampleId :



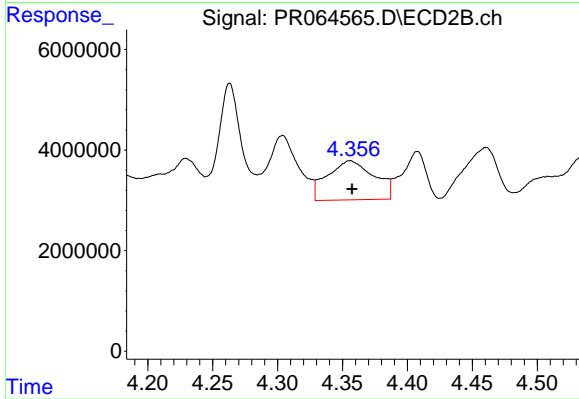
#17 AR-1242-2

R.T.: 4.178 min
 Delta R.T.: 0.004 min
 Response: 9795782
 Conc: 43.90 ng/ml



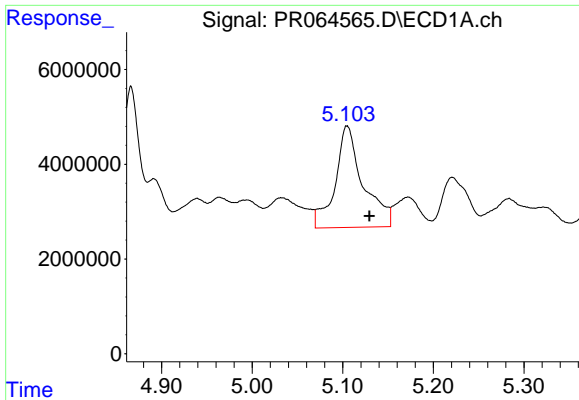
#18 AR-1242-3

R.T.: 5.032 min
 Delta R.T.: 0.006 min
 Response: 17443185
 Conc: 123.91 ng/ml



#18 AR-1242-3

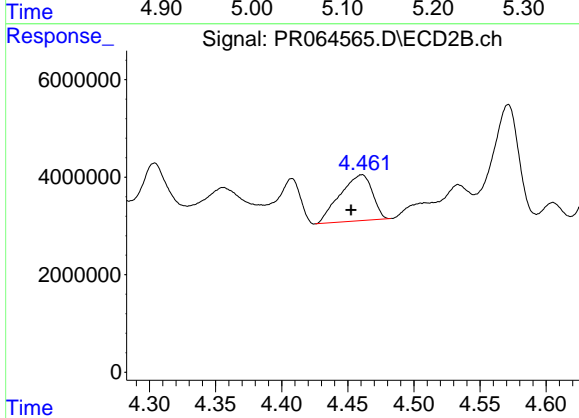
R.T.: 4.356 min
 Delta R.T.: -0.002 min
 Response: 19455804
 Conc: 162.07 ng/ml



#19 AR-1242-4

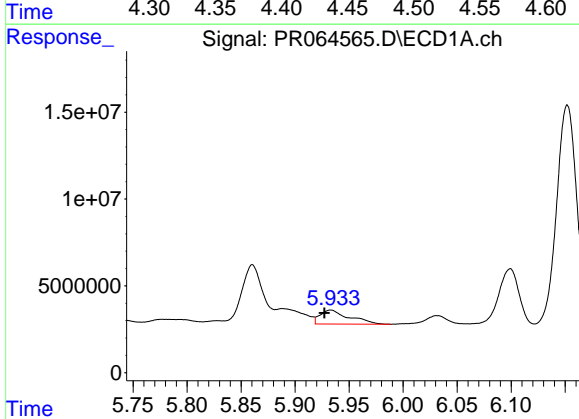
R.T.: 5.105 min
 Delta R.T.: -0.025 min
 Response: 45843074
 Conc: 398.87 ng/ml

Instrument :
 ECD_R
 ClientSampleId :



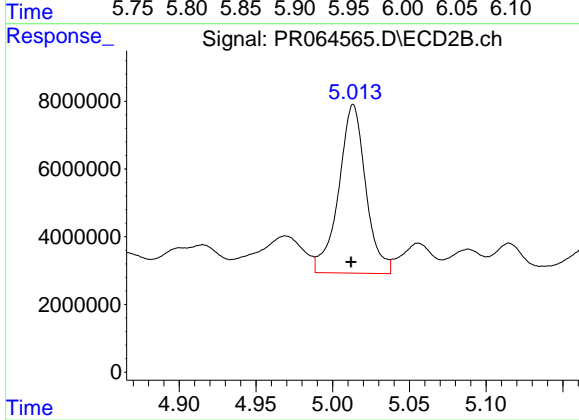
#19 AR-1242-4

R.T.: 4.461 min
 Delta R.T.: 0.008 min
 Response: 16001392
 Conc: 139.75 ng/ml



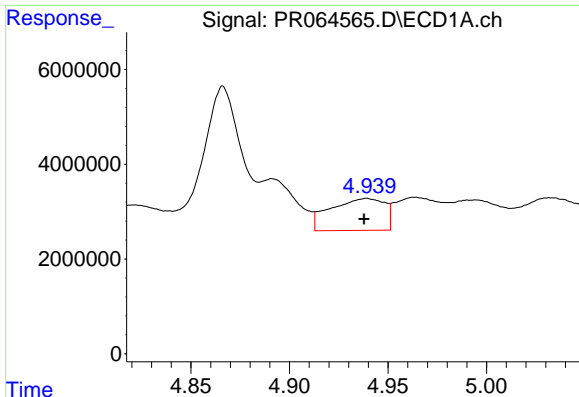
#20 AR-1242-5

R.T.: 5.933 min
 Delta R.T.: 0.006 min
 Response: 15153728
 Conc: 131.49 ng/ml



#20 AR-1242-5

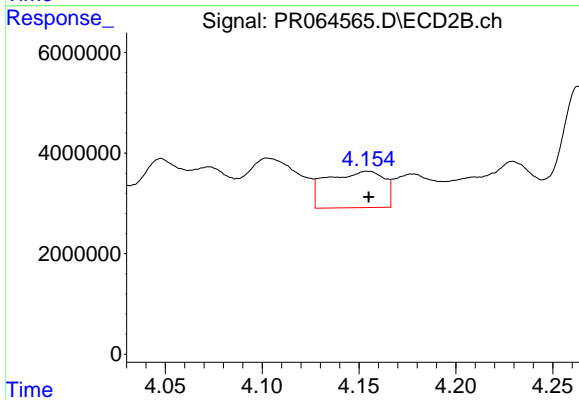
R.T.: 5.013 min
 Delta R.T.: 0.002 min
 Response: 61189098
 Conc: 412.78 ng/ml



#21 AR-1248-1

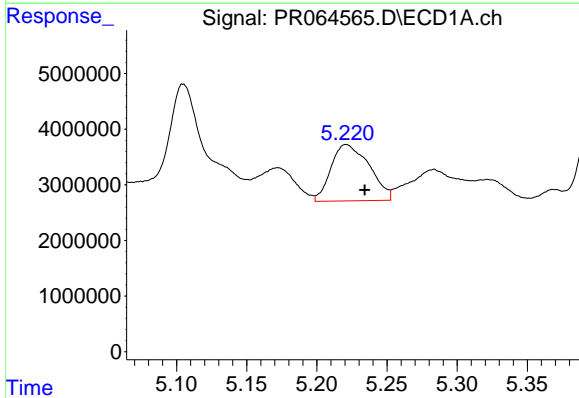
R.T.: 4.939 min
 Delta R.T.: 0.001 min
 Response: 12833476
 Conc: 108.65 ng/ml

Instrument :
 ECD_R
 ClientSampleId :



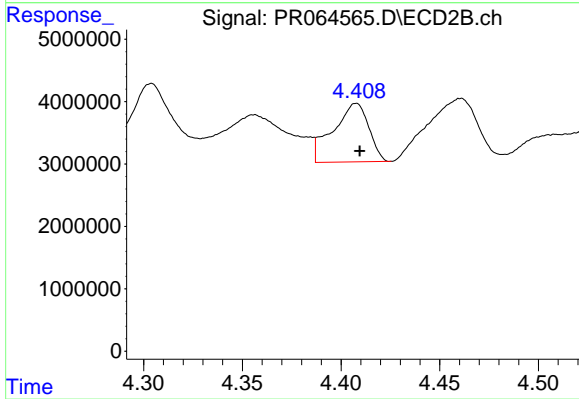
#21 AR-1248-1

R.T.: 4.155 min
 Delta R.T.: 0.000 min
 Response: 14874027
 Conc: 120.45 ng/ml



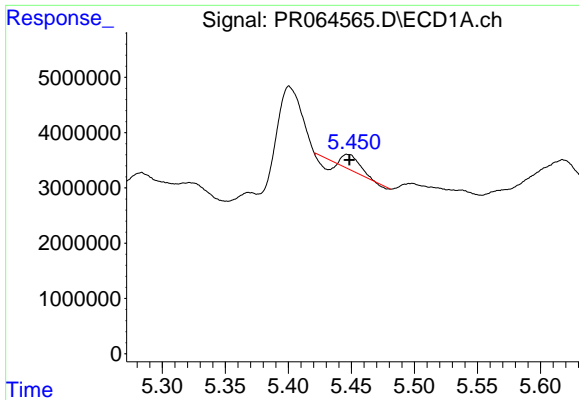
#22 AR-1248-2

R.T.: 5.221 min
 Delta R.T.: -0.013 min
 Response: 19278182
 Conc: 118.05 ng/ml



#22 AR-1248-2

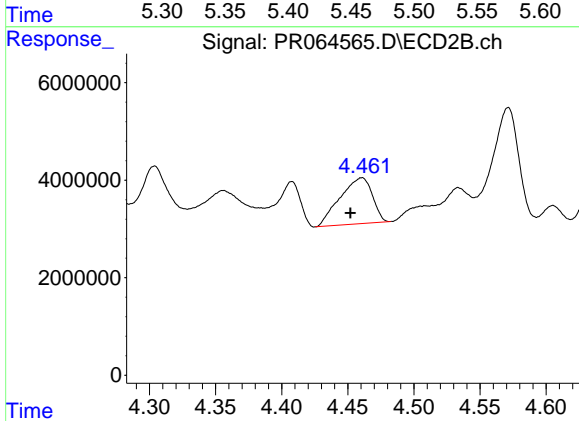
R.T.: 4.408 min
 Delta R.T.: -0.002 min
 Response: 11815461
 Conc: 72.15 ng/ml



#23 AR-1248-3

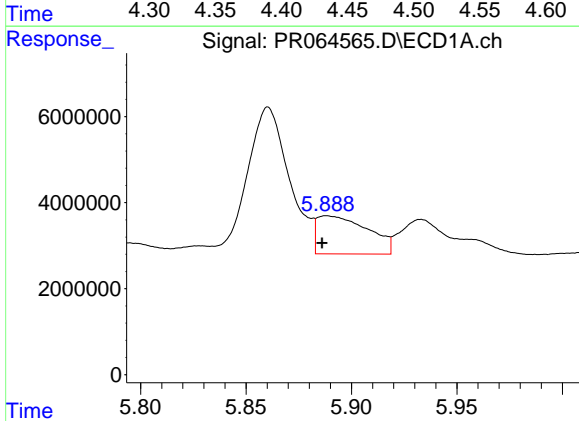
R.T.: 5.447 min
 Delta R.T.: -0.001 min
 Response: 1878555
 Conc: 9.95 ng/ml

Instrument :
 ECD_R
 ClientSampleId :



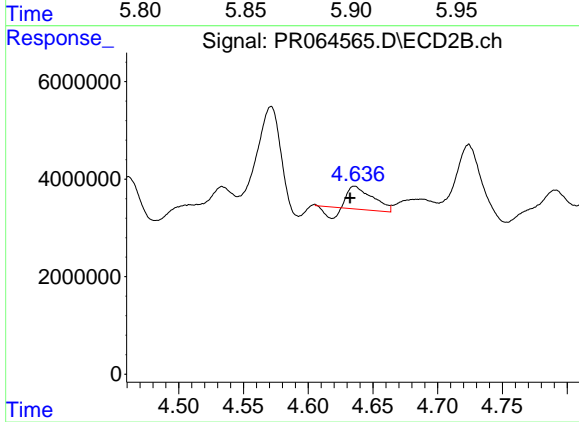
#23 AR-1248-3

R.T.: 4.461 min
 Delta R.T.: 0.009 min
 Response: 16001392
 Conc: 93.17 ng/ml



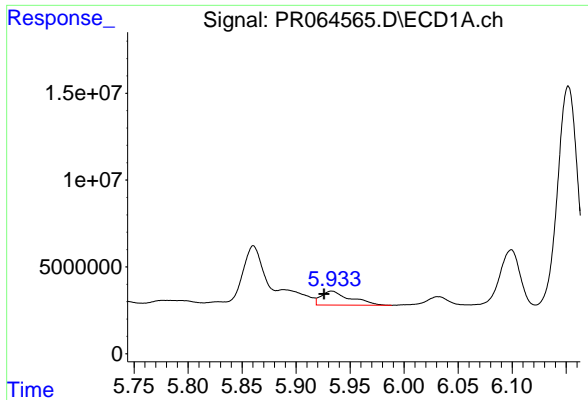
#24 AR-1248-4

R.T.: 5.888 min
 Delta R.T.: 0.002 min
 Response: 14925686
 Conc: 73.01 ng/ml



#24 AR-1248-4

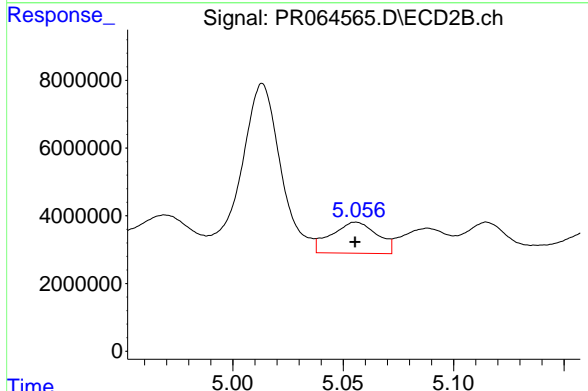
R.T.: 4.636 min
 Delta R.T.: 0.004 min
 Response: 5041249
 Conc: 24.27 ng/ml



#25 AR-1248-5

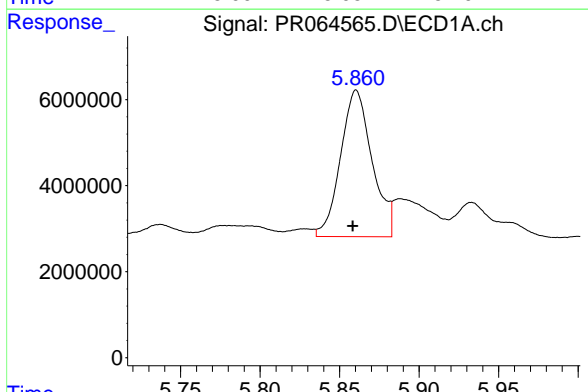
R.T.: 5.933 min
 Delta R.T.: 0.007 min
 Response: 15153728
 Conc: 74.86 ng/ml

Instrument :
 ECD_R
 ClientSampleId :



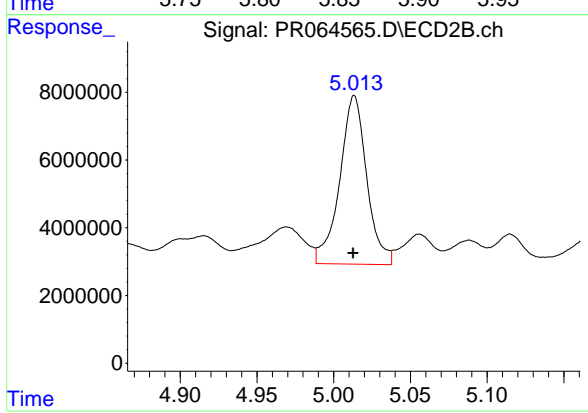
#25 AR-1248-5

R.T.: 5.056 min
 Delta R.T.: 0.000 min
 Response: 13261464
 Conc: 64.06 ng/ml



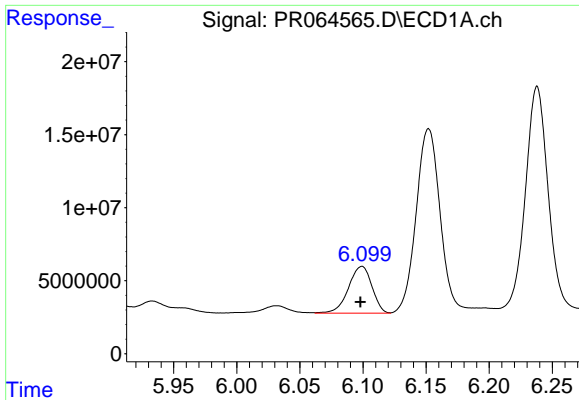
#26 AR-1254-1

R.T.: 5.860 min
 Delta R.T.: 0.002 min
 Response: 47076084
 Conc: 231.83 ng/ml



#26 AR-1254-1

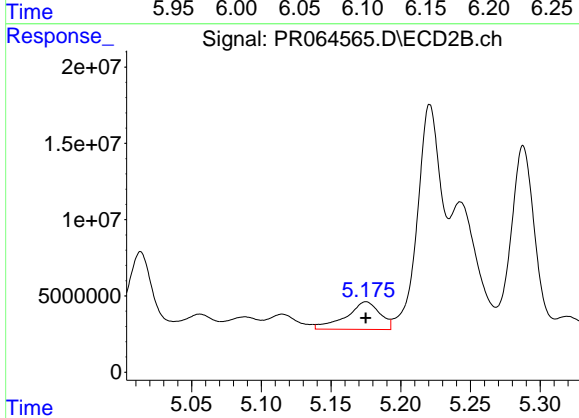
R.T.: 5.013 min
 Delta R.T.: 0.000 min
 Response: 61189098
 Conc: 197.61 ng/ml



#27 AR-1254-2

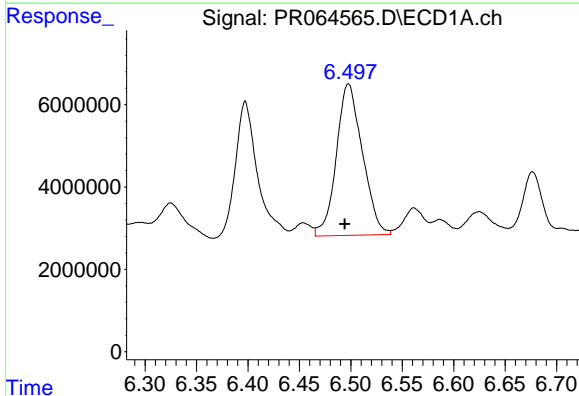
R.T.: 6.099 min
 Delta R.T.: 0.001 min
 Response: 41433360
 Conc: 134.87 ng/ml

Instrument :
 ECD_R
 ClientSampleId :



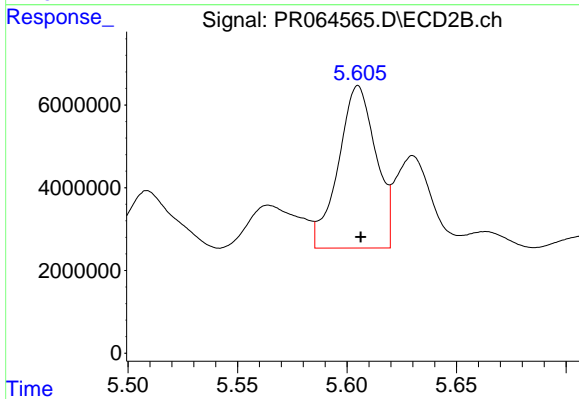
#27 AR-1254-2

R.T.: 5.175 min
 Delta R.T.: 0.000 min
 Response: 30651912
 Conc: 114.16 ng/ml



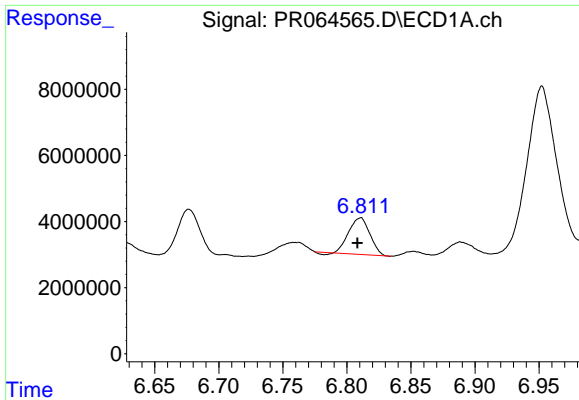
#28 AR-1254-3

R.T.: 6.498 min
 Delta R.T.: 0.004 min
 Response: 64941641
 Conc: 206.80 ng/ml



#28 AR-1254-3

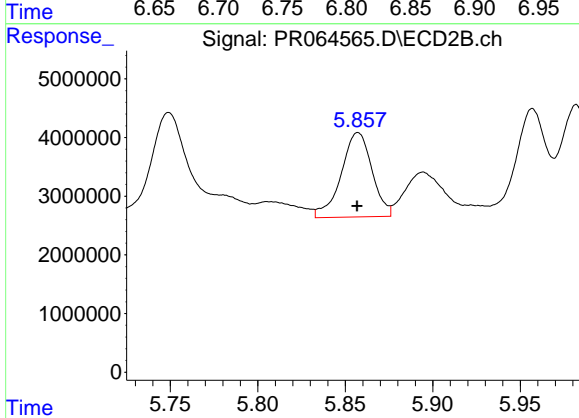
R.T.: 5.605 min
 Delta R.T.: -0.001 min
 Response: 46807840
 Conc: 110.37 ng/ml



#29 AR-1254-4

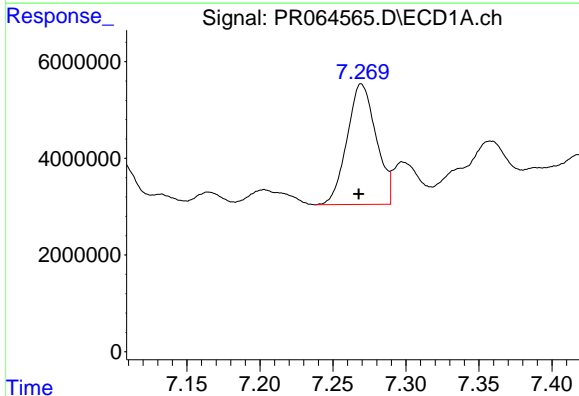
R.T.: 6.811 min
 Delta R.T.: 0.002 min
 Response: 12572628
 Conc: 58.24 ng/ml

Instrument :
 ECD_R
 ClientSampleId :



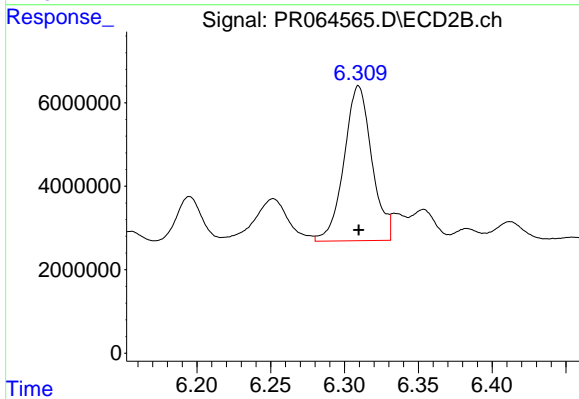
#29 AR-1254-4

R.T.: 5.857 min
 Delta R.T.: 0.000 min
 Response: 17595363
 Conc: 66.61 ng/ml



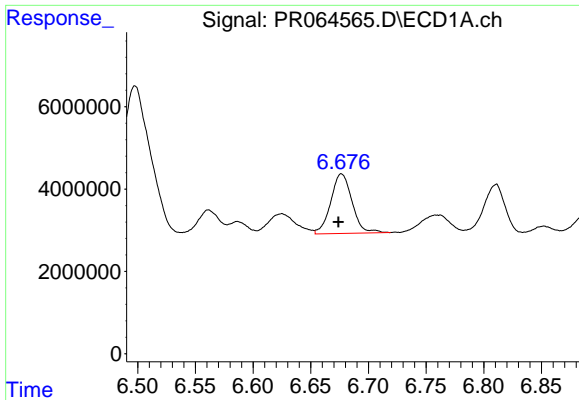
#30 AR-1254-5

R.T.: 7.269 min
 Delta R.T.: 0.002 min
 Response: 34594920
 Conc: 148.04 ng/ml



#30 AR-1254-5

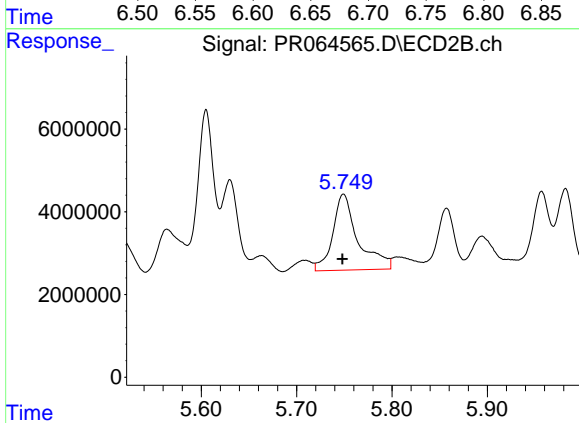
R.T.: 6.310 min
 Delta R.T.: 0.000 min
 Response: 48601924
 Conc: 128.69 ng/ml



#31 AR-1260-1

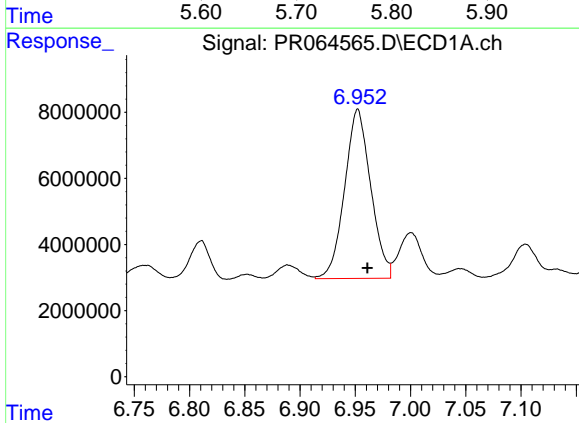
R.T.: 6.677 min
 Delta R.T.: 0.003 min
 Response: 18584366
 Conc: 77.75 ng/ml

Instrument :
 ECD_R
 ClientSampleId :



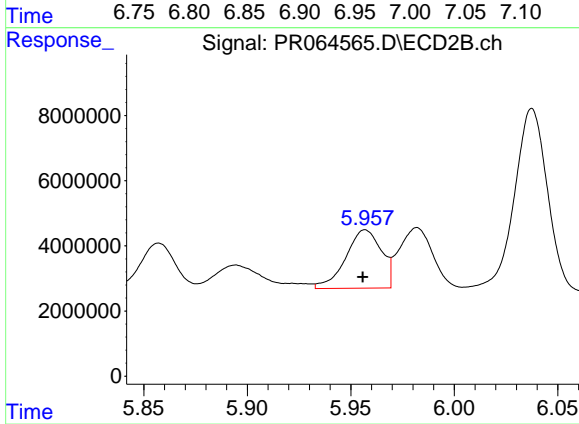
#31 AR-1260-1

R.T.: 5.749 min
 Delta R.T.: 0.001 min
 Response: 33800305
 Conc: 115.63 ng/ml



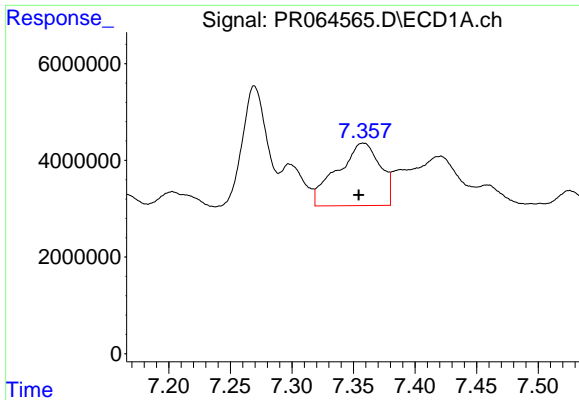
#32 AR-1260-2

R.T.: 6.952 min
 Delta R.T.: -0.009 min
 Response: 84074045
 Conc: 307.39 ng/ml



#32 AR-1260-2

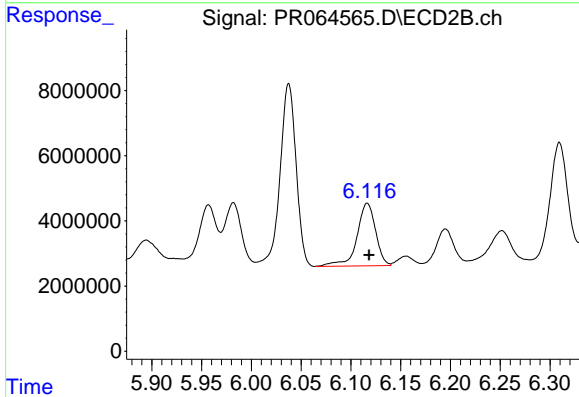
R.T.: 5.957 min
 Delta R.T.: 0.001 min
 Response: 21372673
 Conc: 60.95 ng/ml



#33 AR-1260-3

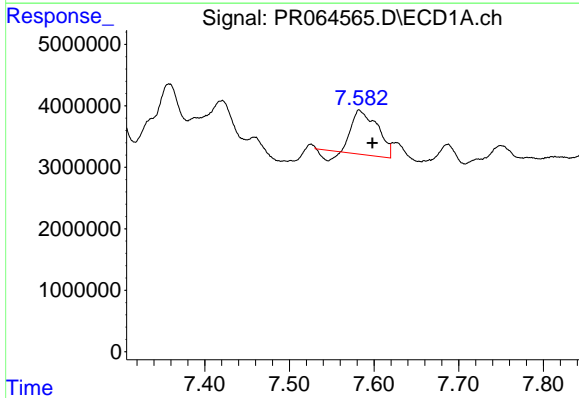
R.T.: 7.358 min
 Delta R.T.: 0.004 min
 Response: 31395523
 Conc: 157.99 ng/ml

Instrument :
 ECD_R
 ClientSampleId :



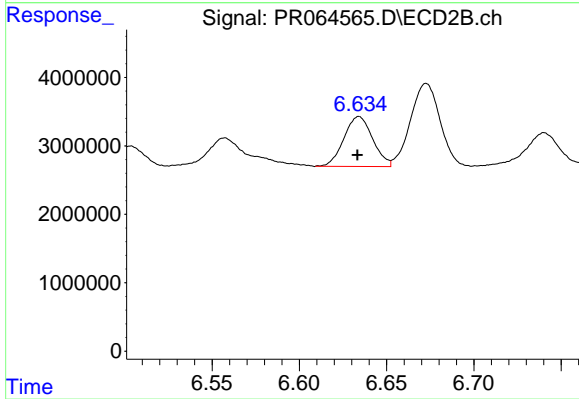
#33 AR-1260-3

R.T.: 6.116 min
 Delta R.T.: -0.002 min
 Response: 25026342
 Conc: 74.30 ng/ml



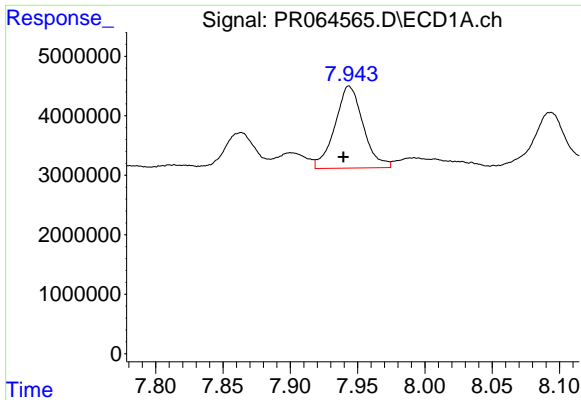
#34 AR-1260-4

R.T.: 7.582 min
 Delta R.T.: -0.016 min
 Response: 14135381
 Conc: 63.98 ng/ml



#34 AR-1260-4

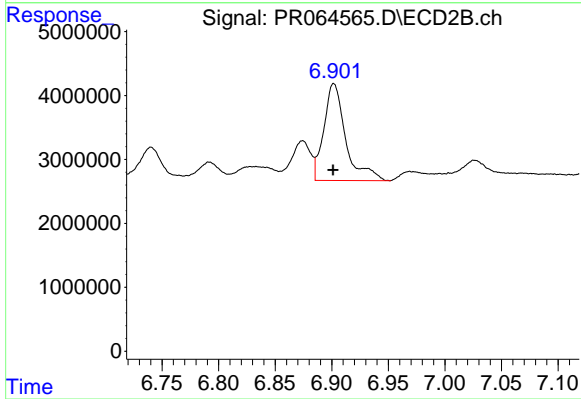
R.T.: 6.634 min
 Delta R.T.: 0.000 min
 Response: 8344888
 Conc: 31.06 ng/ml



#35 AR-1260-5

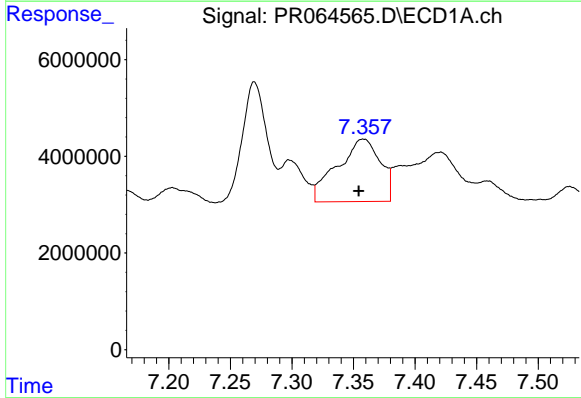
R.T.: 7.944 min
 Delta R.T.: 0.004 min
 Response: 20077106
 Conc: 48.37 ng/ml

Instrument :
 ECD_R
 ClientSampleId :



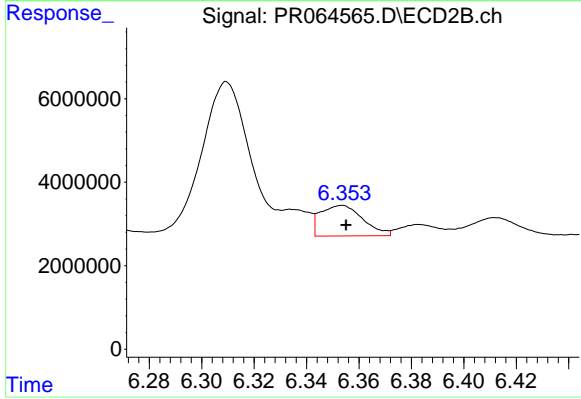
#35 AR-1260-5

R.T.: 6.902 min
 Delta R.T.: 0.000 min
 Response: 20375155
 Conc: 32.34 ng/ml



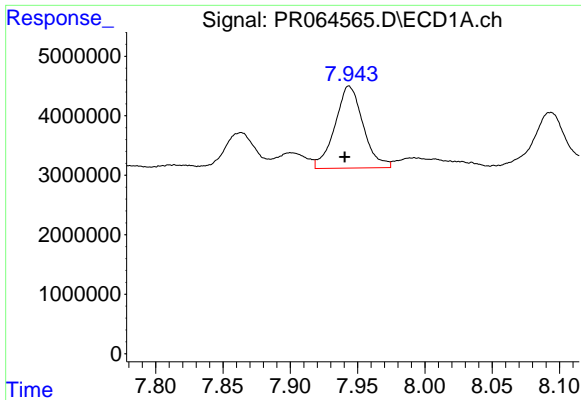
#36 AR-1262-1

R.T.: 7.358 min
 Delta R.T.: 0.004 min
 Response: 31395523
 Conc: 109.13 ng/ml



#36 AR-1262-1

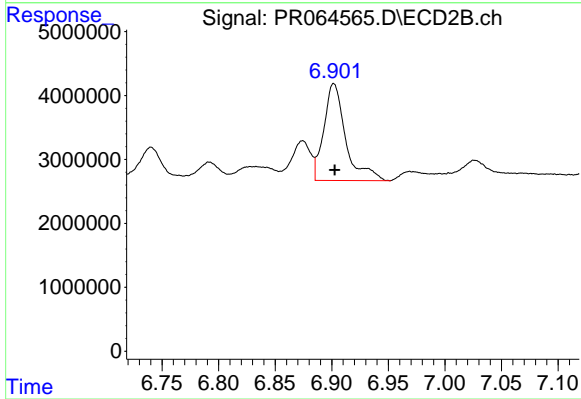
R.T.: 6.353 min
 Delta R.T.: -0.002 min
 Response: 8278483
 Conc: 21.33 ng/ml



#37 AR-1262-2

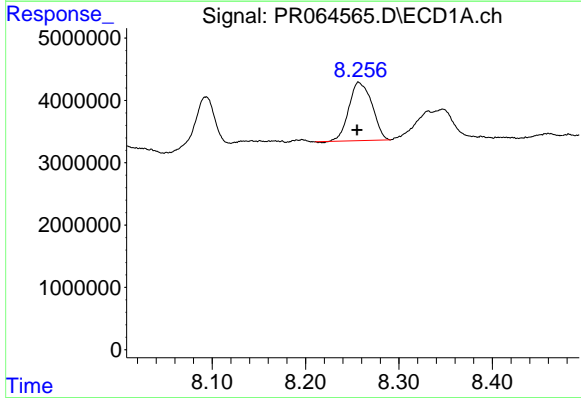
R.T.: 7.944 min
 Delta R.T.: 0.003 min
 Response: 20077106
 Conc: 43.29 ng/ml

Instrument :
 ECD_R
 ClientSampleId :



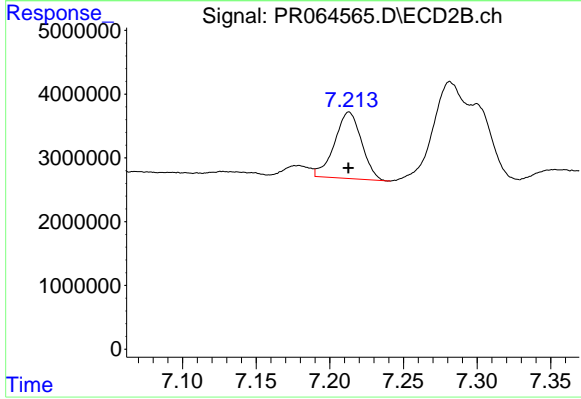
#37 AR-1262-2

R.T.: 6.902 min
 Delta R.T.: 0.000 min
 Response: 20375155
 Conc: 29.32 ng/ml



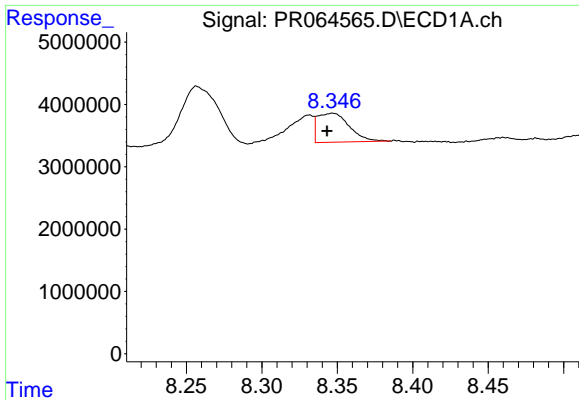
#38 AR-1262-3

R.T.: 8.257 min
 Delta R.T.: 0.002 min
 Response: 16030007
 Conc: 51.94 ng/ml



#38 AR-1262-3

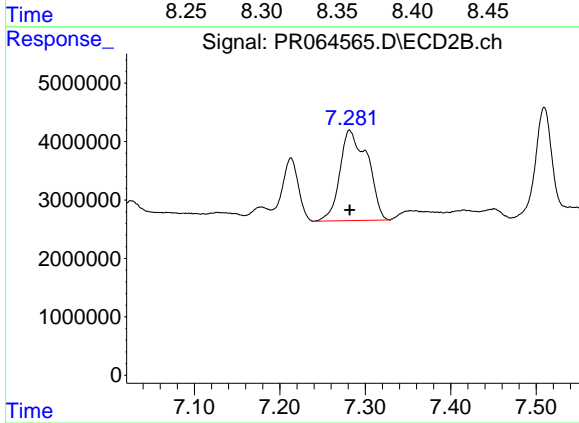
R.T.: 7.213 min
 Delta R.T.: 0.000 min
 Response: 13279120
 Conc: 53.43 ng/ml



#39 AR-1262-4

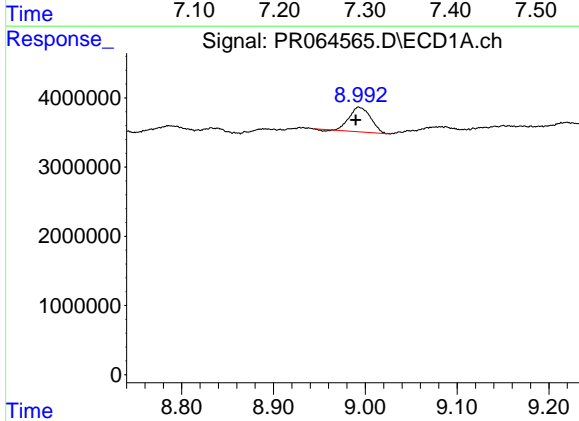
R.T.: 8.347 min
 Delta R.T.: 0.004 min
 Response: 6821338
 Conc: 29.58 ng/ml

Instrument :
 ECD_R
 ClientSampleId :



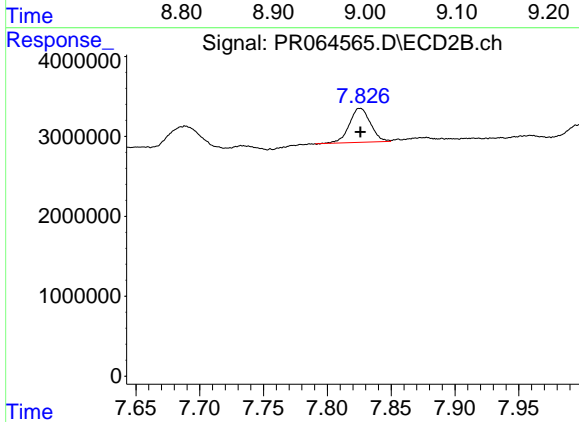
#39 AR-1262-4

R.T.: 7.282 min
 Delta R.T.: 0.000 min
 Response: 34812523
 Conc: 68.98 ng/ml



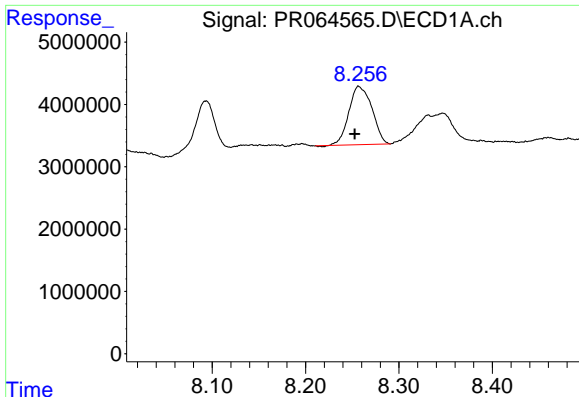
#40 AR-1262-5

R.T.: 8.993 min
 Delta R.T.: 0.003 min
 Response: 5679129
 Conc: 36.08 ng/ml



#40 AR-1262-5

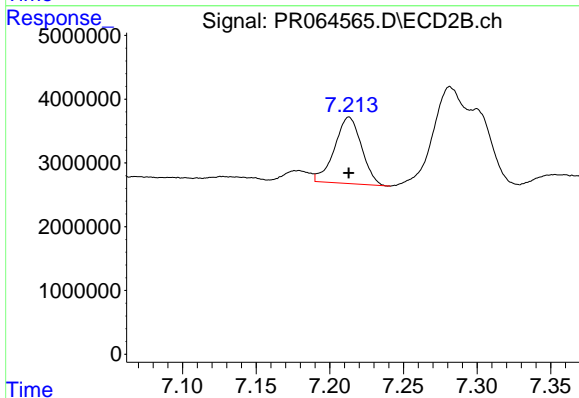
R.T.: 7.826 min
 Delta R.T.: 0.000 min
 Response: 4927696
 Conc: 21.79 ng/ml



#41 AR-1268-1

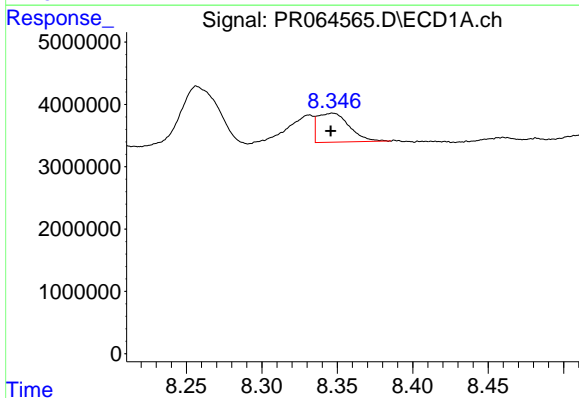
R.T.: 8.257 min
 Delta R.T.: 0.004 min
 Response: 16030007
 Conc: 30.25 ng/ml

Instrument :
 ECD_R
 ClientSampleId :



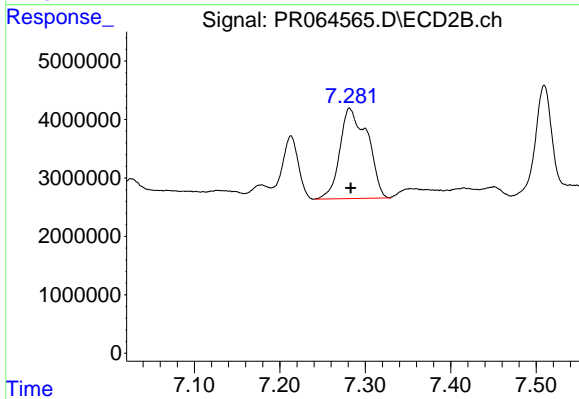
#41 AR-1268-1

R.T.: 7.213 min
 Delta R.T.: 0.000 min
 Response: 13279120
 Conc: 18.49 ng/ml



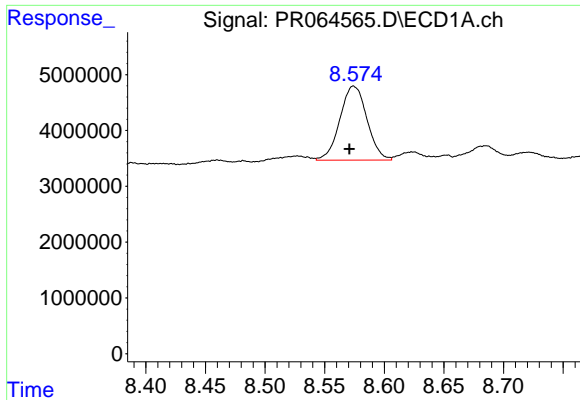
#42 AR-1268-2

R.T.: 8.347 min
 Delta R.T.: 0.001 min
 Response: 6821338
 Conc: 14.57 ng/ml



#42 AR-1268-2

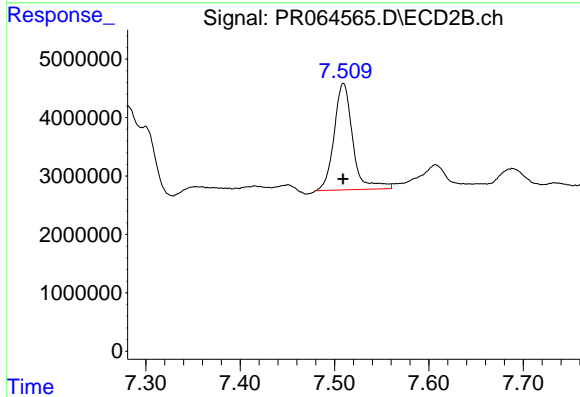
R.T.: 7.282 min
 Delta R.T.: -0.002 min
 Response: 34812523
 Conc: 48.57 ng/ml



#43 AR-1268-3

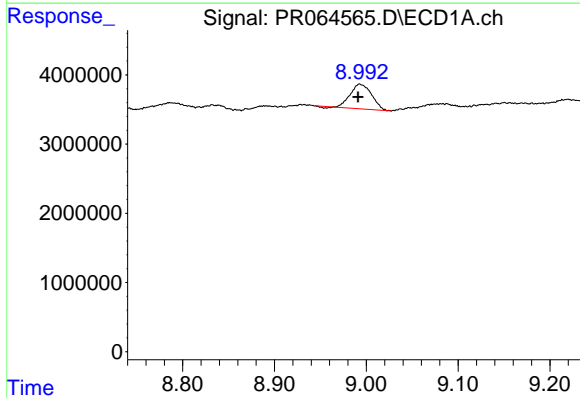
R.T.: 8.574 min
 Delta R.T.: 0.003 min
 Response: 20933156
 Conc: 51.07 ng/ml

Instrument :
 ECD_R
 ClientSampleId :



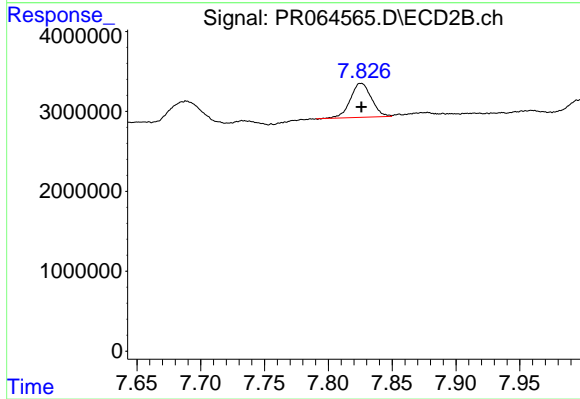
#43 AR-1268-3

R.T.: 7.509 min
 Delta R.T.: 0.000 min
 Response: 25007549
 Conc: 40.89 ng/ml



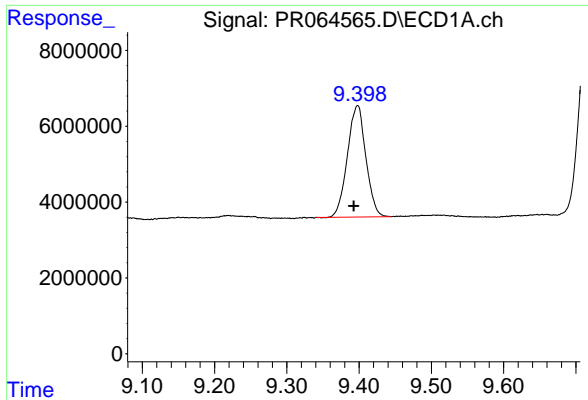
#44 AR-1268-4

R.T.: 8.993 min
 Delta R.T.: 0.002 min
 Response: 5679129
 Conc: 33.42 ng/ml



#44 AR-1268-4

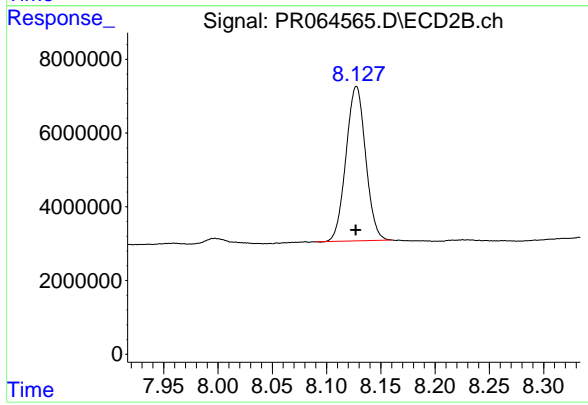
R.T.: 7.826 min
 Delta R.T.: 0.000 min
 Response: 4927696
 Conc: 19.65 ng/ml



#45 AR-1268-5

R.T.: 9.398 min
Delta R.T.: 0.005 min
Response: 52083801
Conc: 40.27 ng/ml

Instrument :
ECD_R
ClientSampleId :



#45 AR-1268-5

R.T.: 8.128 min
Delta R.T.: 0.000 min
Response: 52746758
Conc: 28.99 ng/ml