

Data Path : Z:\pestpcbsrv\HPCHEM1\ECD\_R\Data\PR112822\  
 Data File : PR058403.D  
 Signal(s) : Signal #1: ECD1A.ch Signal #2: ECD2B.ch  
 Acq On : 29 Nov 2022 01:55  
 Operator : AJ\MA  
 Sample : PB149315BS  
 Misc :  
 ALS Vial : 46 Sample Multiplier: 1

Instrument :  
 ECD\_R  
 ClientSampleId :

Integration File signal 1: autoint1.e  
 Integration File signal 2: autoint2.e  
 Quant Time: Nov 29 04:27:05 2022  
 Quant Method : Z:\pestpcbsrv\HPCHEM1\ECD\_R\Method\PR111622CLP.M  
 Quant Title : GC EXTRACTABLES  
 QLast Update : Thu Nov 17 05:36:05 2022  
 Response via : Initial Calibration  
 Integrator: ChemStation

Volume Inj. : 1 µl  
 Signal #1 Phase : ZB MR1 Signal #2 Phase: ZB MR2  
 Signal #1 Info : 30Mx0.32mmx 0.5µm Signal #2 Info : 30M x 0.32mm x 0.25µm

Compound	RT#1	RT#2	Resp#1	Resp#2	ng/ml	ng/ml
-----						
System Monitoring Compounds						
1) SA Tetrachlo...	3.695	2.916	43372058	61068868	18.683	19.790
2) SA Decachlor...	9.676	8.159	77892873	107.5E6	36.129	38.546
Target Compounds						
3) L1 AR-1016-1	4.928	4.029	8521348	11488422	111.559	109.900
4) L1 AR-1016-2	4.950	4.047	11352021	15379859	109.664	108.009
5) L1 AR-1016-3	5.016	4.225	7552716	8527243	112.636	111.400
6) L1 AR-1016-4	5.119	4.276	6095604	6930361	110.100	117.553
7) L1 AR-1016-5	5.438	4.492	5823449	8717820	102.694	110.473
8) L2 AR-1221-1	3.909	3.139	2401245	1085795	80.326	30.234 #
9) L2 AR-1221-2	4.008	3.224	1707024	2240869	81.041	86.707
10) L2 AR-1221-3	4.086	3.302	4873818	6025355	75.971	72.172
11) L3 AR-1232-1	4.086	3.302	4873818	6025355	90.083	85.941
12) L3 AR-1232-2	4.640	4.047	6252026	15379859	235.085	229.121
13) L3 AR-1232-3	4.950	4.225	11352021	8527243	226.172	238.417
14) L3 AR-1232-4	5.119	4.317	6095604	8112161	232.166	260.901
15) L3 AR-1232-5	5.224	4.492	4926727	8717820	253.800	242.939
16) L4 AR-1242-1	4.928	4.029	8521348	11488422	129.944	128.674
17) L4 AR-1242-2	4.950	4.047	11352021	15379859	128.333	126.174
18) L4 AR-1242-3	5.016	4.225	7552716	8527243	130.254	130.883
19) L4 AR-1242-4	5.119	4.317	6095604	8112161	129.426	131.235
20) L4 AR-1242-5	5.915	4.861	920299	7197589	17.365	87.558 #
21) L5 AR-1248-1	4.928	4.029	8521348	11488422	165.087	165.581
22) L5 AR-1248-2	5.224	4.276	4926727	6930361	72.989	74.512
23) L5 AR-1248-3	5.438	4.317	5823449	8112161	71.884	85.719
24) L5 AR-1248-4	5.873	4.492	959083	8717820	10.116	75.061 #
25) L5 AR-1248-5	5.915	4.902	920299	1163264	9.976	9.656
26) L6 AR-1254-1	5.845	4.861	4834303	7197589	54.321	42.257
27) L6 AR-1254-2	6.085	5.019	5178637	6876330	36.990	46.850 #
28) L6 AR-1254-3	6.480	5.440	3162238	3860228	20.455	15.784
29) L6 AR-1254-4	6.793	5.685	2359620	1424287	19.257	9.012 #
30) L6 AR-1254-5	7.252	6.129	17117861	24779938	128.217	111.524
31) L7 AR-1260-1	6.662	5.580	12025970	17342148	100.791	106.814
32) L7 AR-1260-2	6.947	5.784	14519730	21167388	98.282	106.177
33) L7 AR-1260-3	7.340	5.942	9411116	21188569	85.655	108.925 #
34) L7 AR-1260-4	7.585	6.448	11516525	14357569	90.115	90.612
35) L7 AR-1260-5	7.924	6.712	20594550	32644123	82.881	86.094
36) L8 AR-1262-1	7.340	6.173	9411116	15216682	58.354	64.887
37) L8 AR-1262-2	7.924	6.448	20594550	14357569	70.877	67.098
38) L8 AR-1262-3	8.244	7.017	13885241	6699004	69.011	39.236 #
39) L8 AR-1262-4	8.323	7.082	3058287	24786302	20.043	75.555 #
40) L8 AR-1262-5	8.962	7.621	5384587	7515569	47.932	48.671
41) L9 AR-1268-1	8.244	7.017	13885241	6699004	41.572	13.378 #

Data Path : Z:\pestpcbsrv\HPCHEM1\ECD\_R\Data\PR112822\  
 Data File : PR058403.D  
 Signal(s) : Signal #1: ECD1A.ch Signal #2: ECD2B.ch  
 Acq On : 29 Nov 2022 01:55  
 Operator : AJ\MA  
 Sample : PB149315BS  
 Misc :  
 ALS Vial : 46 Sample Multiplier: 1

Instrument :  
 ECD\_R  
 ClientSampleId :

Integration File signal 1: autoint1.e  
 Integration File signal 2: autoint2.e  
 Quant Time: Nov 29 04:27:05 2022  
 Quant Method : Z:\pestpcbsrv\HPCHEM1\ECD\_R\Method\PR111622CLP.M  
 Quant Title : GC EXTRACTABLES  
 QLast Update : Thu Nov 17 05:36:05 2022  
 Response via : Initial Calibration  
 Integrator: ChemStation

Volume Inj. : 1 µl  
 Signal #1 Phase : ZB MR1 Signal #2 Phase: ZB MR2  
 Signal #1 Info : 30Mx0.32mmx 0.5µm Signal #2 Info : 30M x 0.32mm x 0.25µm

	Compound	RT#1	RT#2	Resp#1	Resp#2	ng/ml	ng/ml
42)	L9 AR-1268-2	8.323	7.082	3058287	24786302	10.087	54.302 #
43)	L9 AR-1268-3	8.551	7.308	500807	992617	1.942	2.574 #
44)	L9 AR-1268-4	8.962	7.621	5384587	7515569	44.602	45.321
45)	L9 AR-1268-5	9.357	7.916	2566225	2763076	3.012	2.156 #

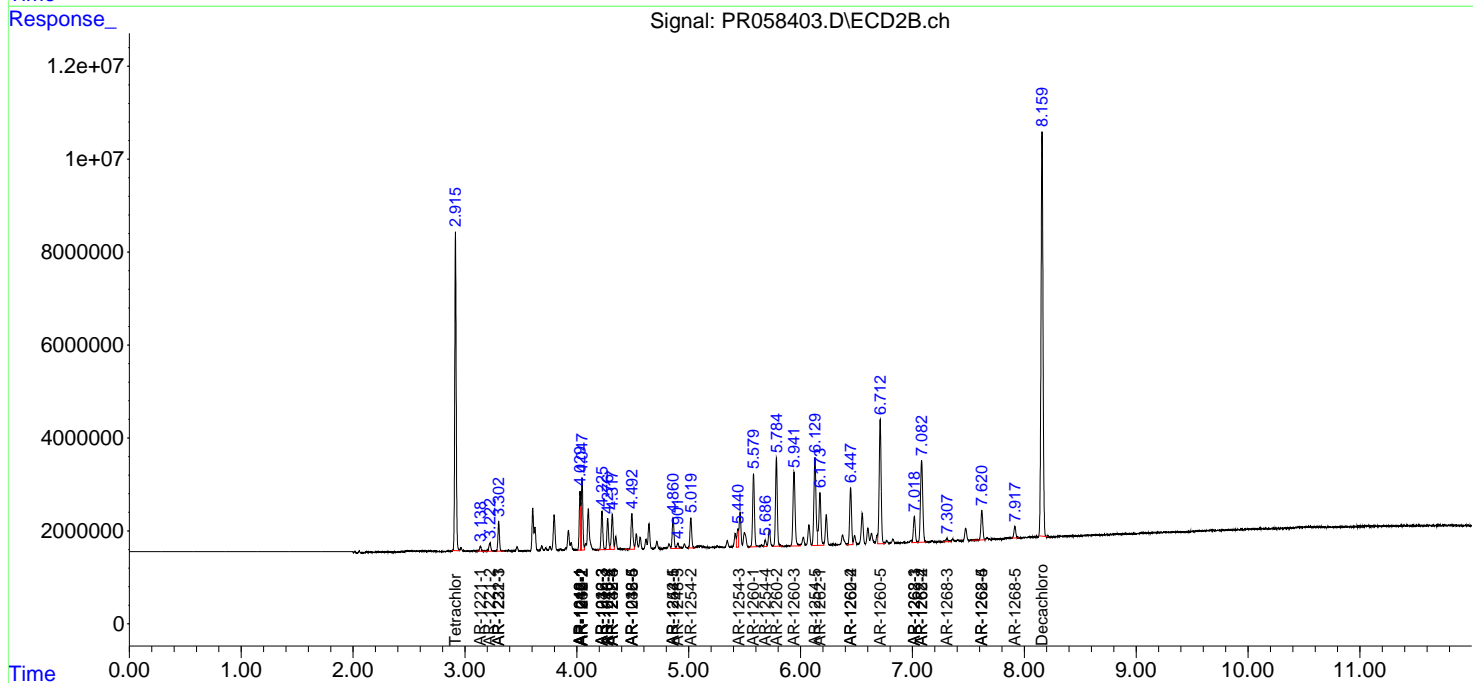
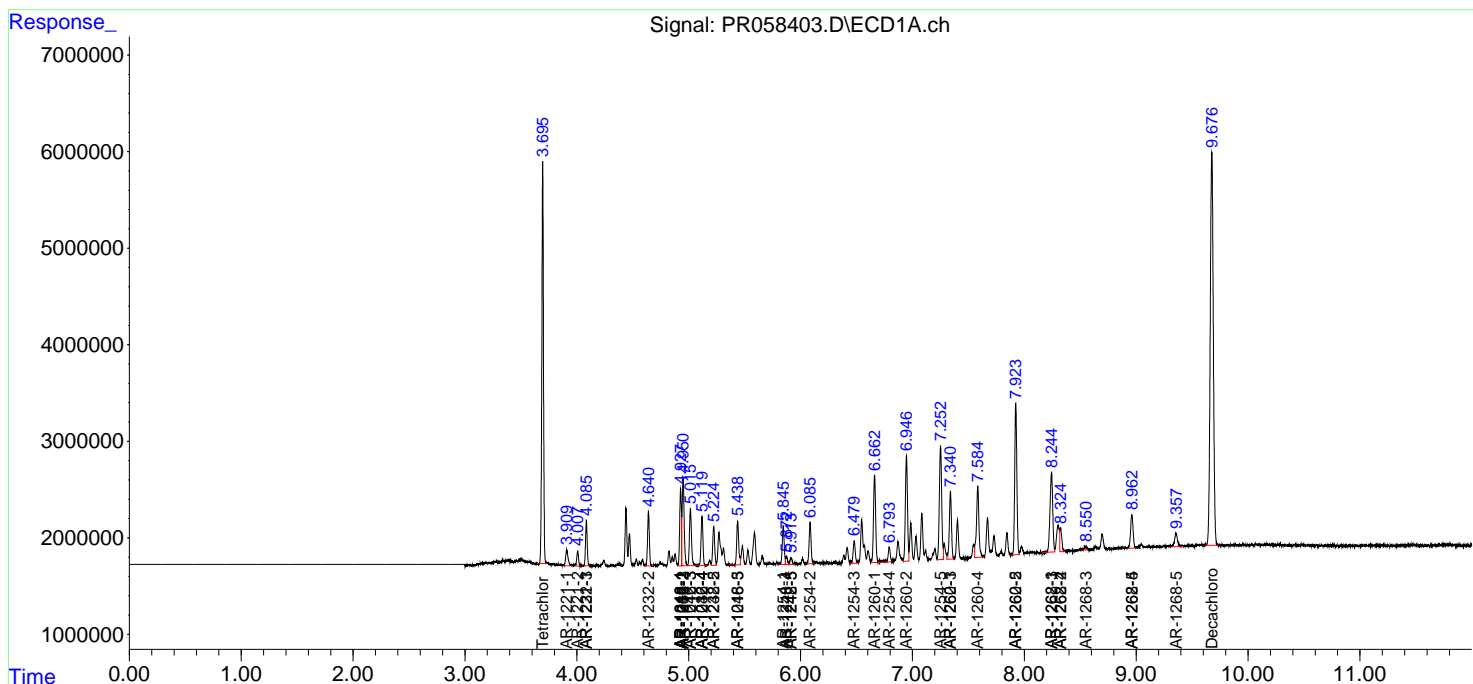
(f)=RT Delta > 1/2 Window (#)=Amounts differ by > 25% (m)=manual int.

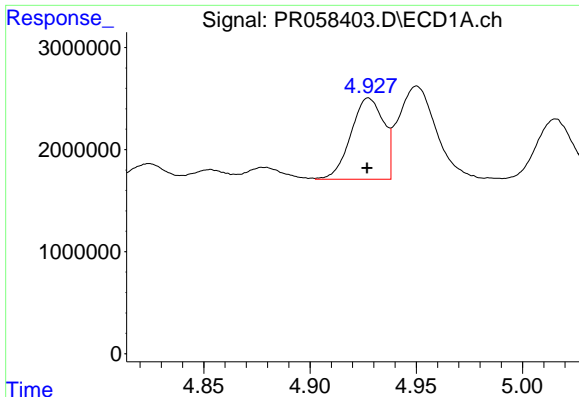
Data Path : Z:\pestpcbsrv\HPCHEM1\ECD\_R\Data\PR112822\  
 Data File : PR058403.D  
 Signal(s) : Signal #1: ECD1A.ch Signal #2: ECD2B.ch  
 Acq On : 29 Nov 2022 01:55  
 Operator : AJ\MA  
 Sample : PB149315BS  
 Misc :  
 ALS Vial : 46 Sample Multiplier: 1

Instrument :  
 ECD\_R  
 ClientSampleId :

Integration File signal 1: autoint1.e  
 Integration File signal 2: autoint2.e  
 Quant Time: Nov 29 04:27:05 2022  
 Quant Method : Z:\pestpcbsrv\HPCHEM1\ECD\_R\Method\PR11622CLP.M  
 Quant Title : GC EXTRACTABLES  
 QLast Update : Thu Nov 17 05:36:05 2022  
 Response via : Initial Calibration  
 Integrator: ChemStation

Volume Inj. : 1 µl  
 Signal #1 Phase : ZB MR1 Signal #2 Phase: ZB MR2  
 Signal #1 Info : 30Mx0.32mmx 0.5µm Signal #2 Info : 30M x 0.32mm x 0.25µm

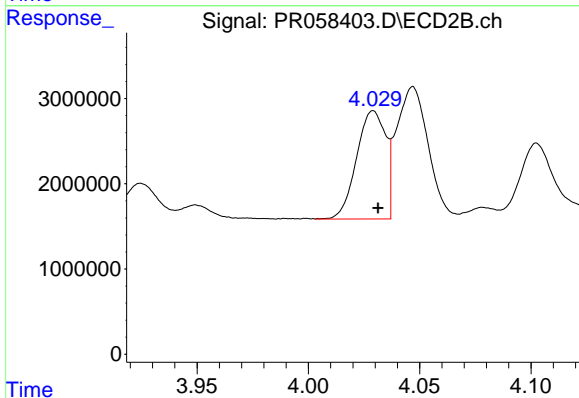




#3 AR-1016-1

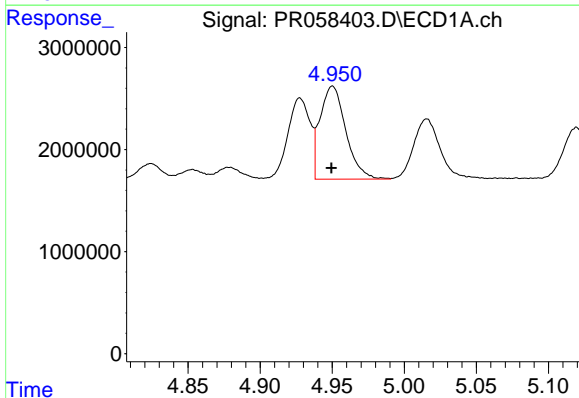
R.T.: 4.928 min  
 Delta R.T.: 0.000 min  
 Response: 8521348  
 Conc: 111.56 ng/ml

Instrument :  
 ECD\_R  
 ClientSampleId :



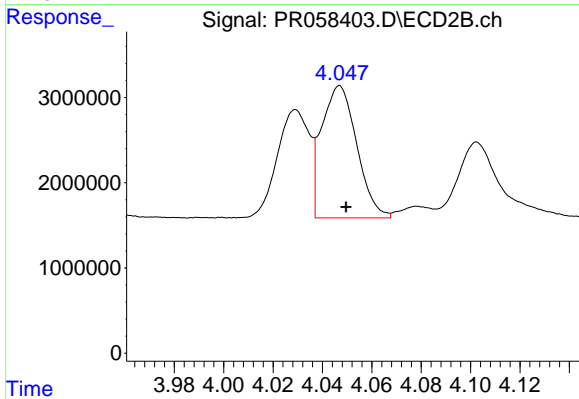
#3 AR-1016-1

R.T.: 4.029 min  
 Delta R.T.: -0.002 min  
 Response: 11488422  
 Conc: 109.90 ng/ml



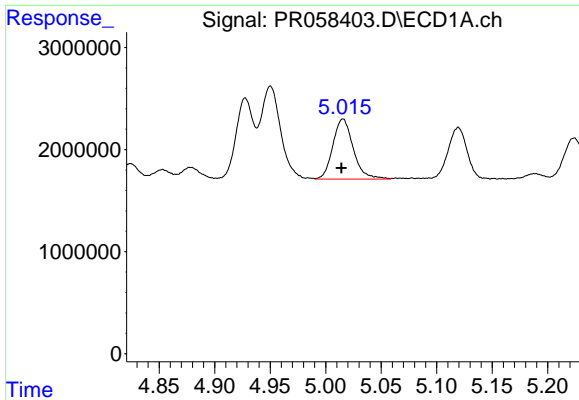
#4 AR-1016-2

R.T.: 4.950 min  
 Delta R.T.: 0.000 min  
 Response: 11352021  
 Conc: 109.66 ng/ml



#4 AR-1016-2

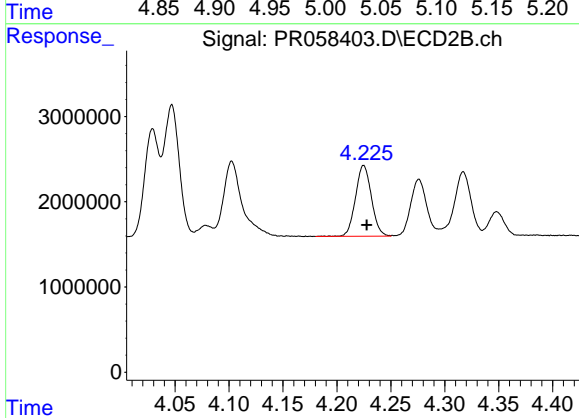
R.T.: 4.047 min  
 Delta R.T.: -0.003 min  
 Response: 15379859  
 Conc: 108.01 ng/ml



#5 AR-1016-3

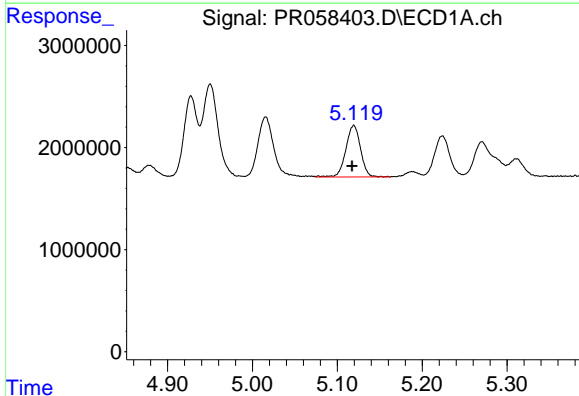
R.T.: 5.016 min  
 Delta R.T.: 0.001 min  
 Response: 7552716  
 Conc: 112.64 ng/ml

Instrument :  
 ECD\_R  
 ClientSampleId :



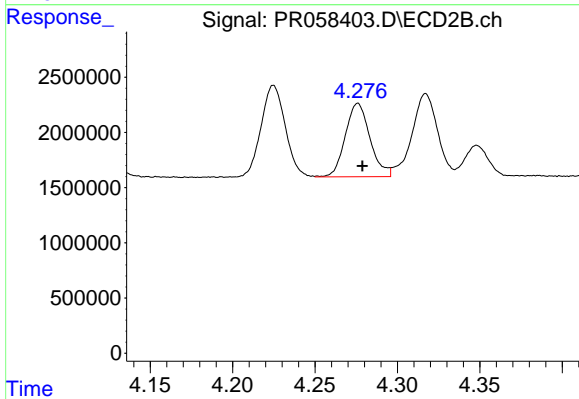
#5 AR-1016-3

R.T.: 4.225 min  
 Delta R.T.: -0.003 min  
 Response: 8527243  
 Conc: 111.40 ng/ml



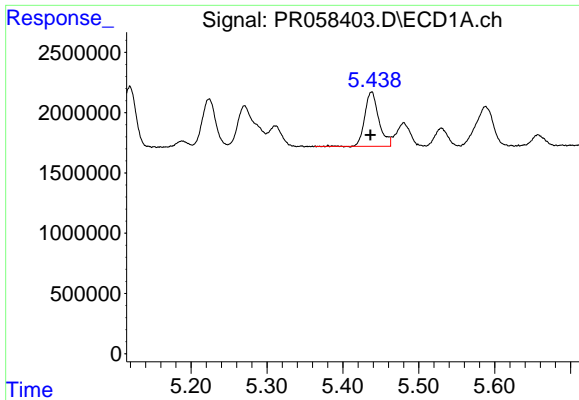
#6 AR-1016-4

R.T.: 5.119 min  
 Delta R.T.: 0.002 min  
 Response: 6095604  
 Conc: 110.10 ng/ml



#6 AR-1016-4

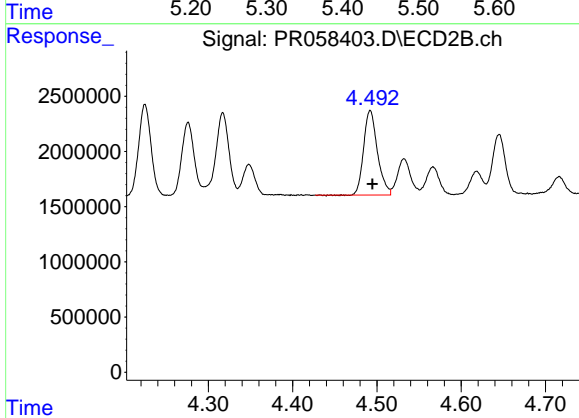
R.T.: 4.276 min  
 Delta R.T.: -0.003 min  
 Response: 6930361  
 Conc: 117.55 ng/ml



#7 AR-1016-5

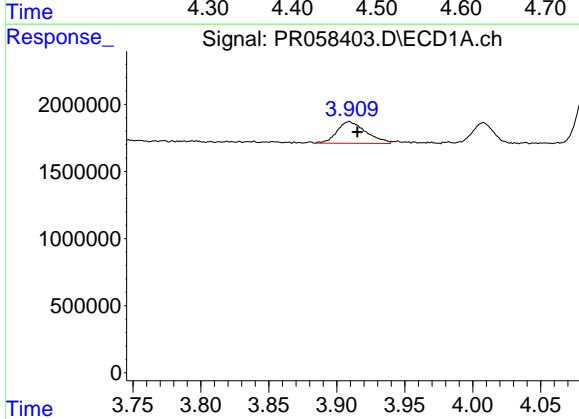
R.T.: 5.438 min  
 Delta R.T.: 0.001 min  
 Response: 5823449  
 Conc: 102.69 ng/ml

Instrument :  
 ECD\_R  
 ClientSampleId :



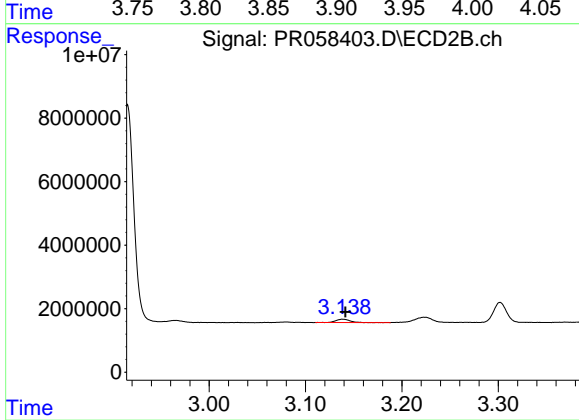
#7 AR-1016-5

R.T.: 4.492 min  
 Delta R.T.: -0.003 min  
 Response: 8717820  
 Conc: 110.47 ng/ml



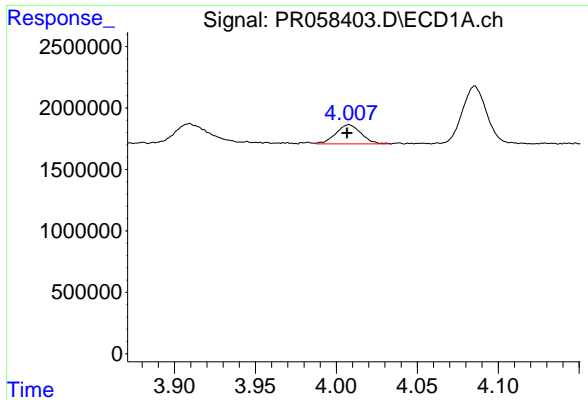
#8 AR-1221-1

R.T.: 3.909 min  
 Delta R.T.: -0.006 min  
 Response: 2401245  
 Conc: 80.33 ng/ml



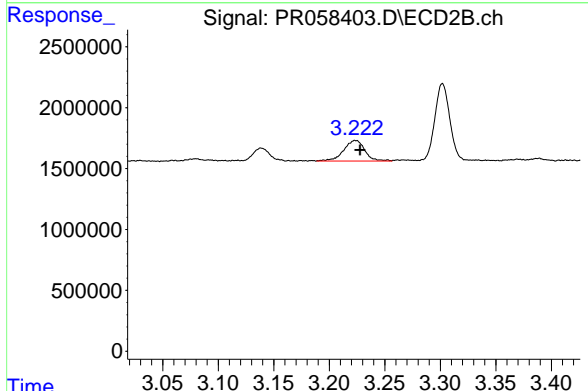
#8 AR-1221-1

R.T.: 3.139 min  
 Delta R.T.: -0.003 min  
 Response: 1085795  
 Conc: 30.23 ng/ml

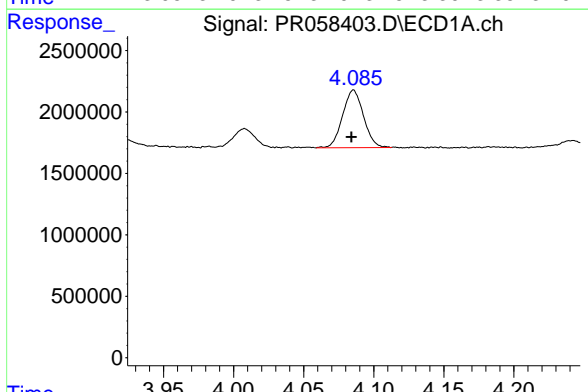


#9 AR-1221-2  
 R.T.: 4.008 min  
 Delta R.T.: 0.001 min  
 Response: 1707024  
 Conc: 81.04 ng/ml

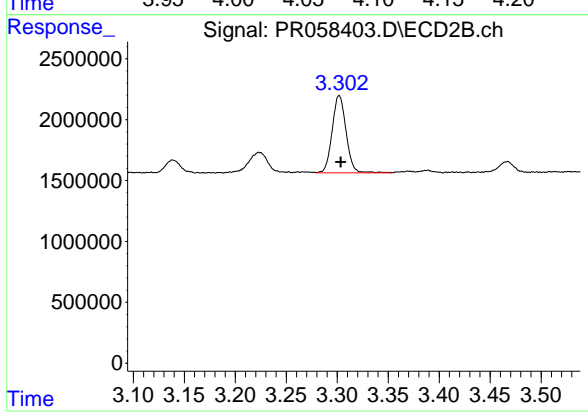
Instrument :  
 ECD\_R  
 ClientSampleId :



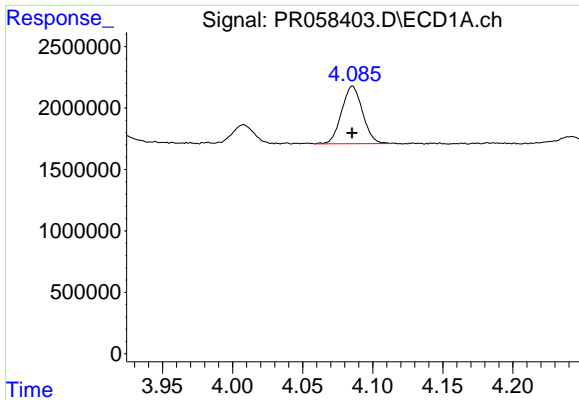
#9 AR-1221-2  
 R.T.: 3.224 min  
 Delta R.T.: -0.004 min  
 Response: 2240869  
 Conc: 86.71 ng/ml



#10 AR-1221-3  
 R.T.: 4.086 min  
 Delta R.T.: 0.002 min  
 Response: 4873818  
 Conc: 75.97 ng/ml



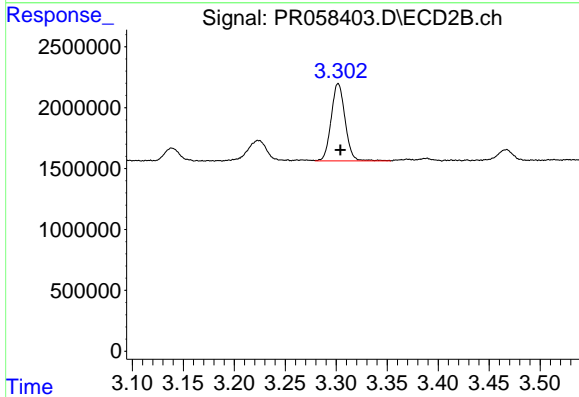
#10 AR-1221-3  
 R.T.: 3.302 min  
 Delta R.T.: -0.002 min  
 Response: 6025355  
 Conc: 72.17 ng/ml



#11 AR-1232-1

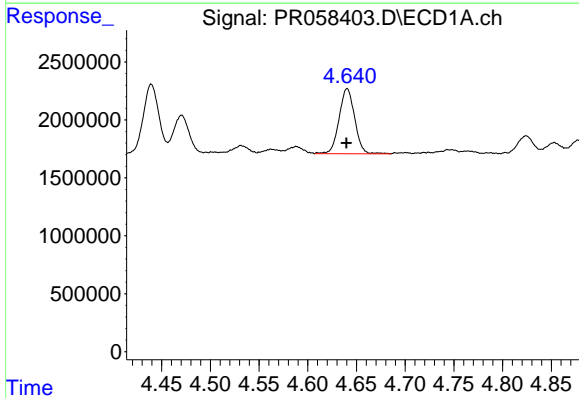
R.T.: 4.086 min  
 Delta R.T.: 0.000 min  
 Response: 4873818  
 Conc: 90.08 ng/ml

Instrument :  
 ECD\_R  
 ClientSampleId :



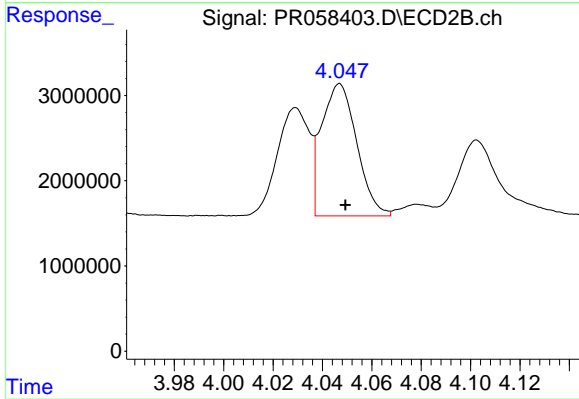
#11 AR-1232-1

R.T.: 3.302 min  
 Delta R.T.: -0.002 min  
 Response: 6025355  
 Conc: 85.94 ng/ml



#12 AR-1232-2

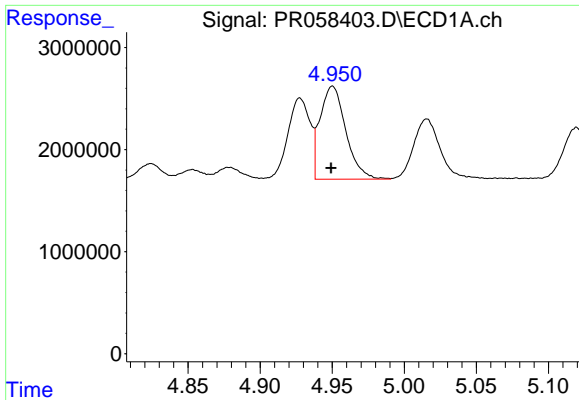
R.T.: 4.640 min  
 Delta R.T.: 0.000 min  
 Response: 6252026  
 Conc: 235.08 ng/ml



#12 AR-1232-2

R.T.: 4.047 min  
 Delta R.T.: -0.002 min  
 Response: 15379859  
 Conc: 229.12 ng/ml

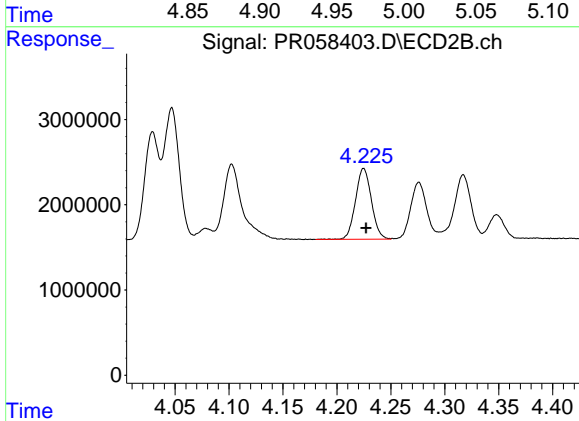




#13 AR-1232-3

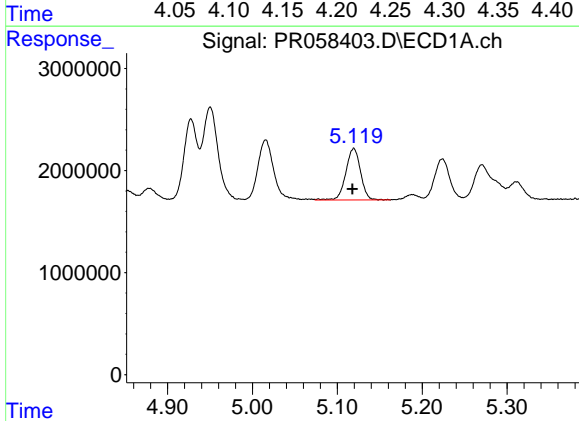
R.T.: 4.950 min  
 Delta R.T.: 0.001 min  
 Response: 11352021  
 Conc: 226.17 ng/ml

Instrument :  
 ECD\_R  
 ClientSampleId :



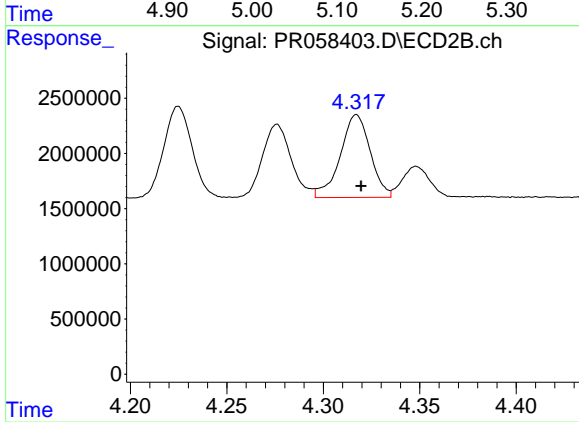
#13 AR-1232-3

R.T.: 4.225 min  
 Delta R.T.: -0.002 min  
 Response: 8527243  
 Conc: 238.42 ng/ml



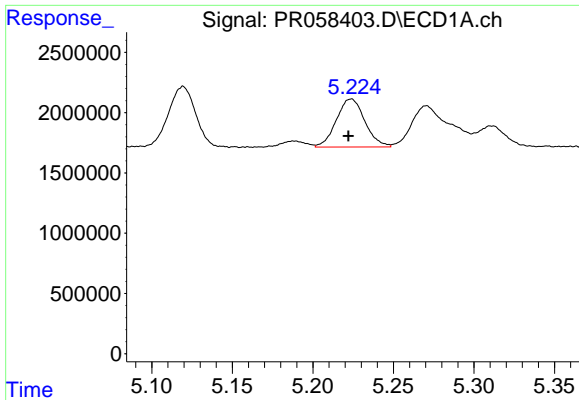
#14 AR-1232-4

R.T.: 5.119 min  
 Delta R.T.: 0.001 min  
 Response: 6095604  
 Conc: 232.17 ng/ml



#14 AR-1232-4

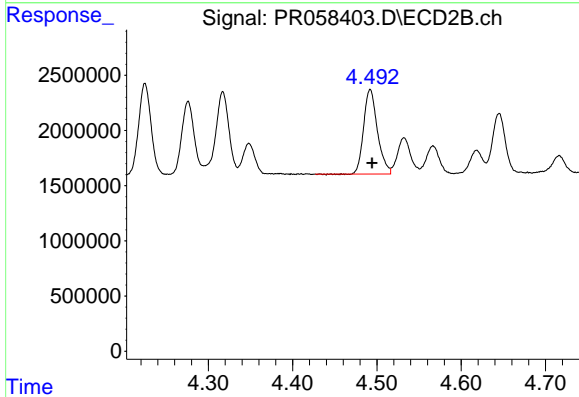
R.T.: 4.317 min  
 Delta R.T.: -0.002 min  
 Response: 8112161  
 Conc: 260.90 ng/ml



#15 AR-1232-5

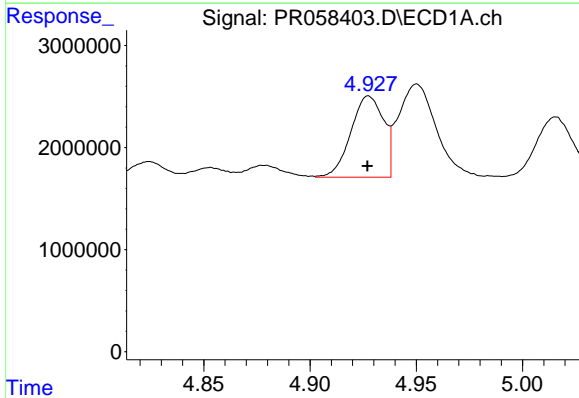
R.T.: 5.224 min  
 Delta R.T.: 0.002 min  
 Response: 4926727  
 Conc: 253.80 ng/ml

Instrument :  
 ECD\_R  
 ClientSampleId :



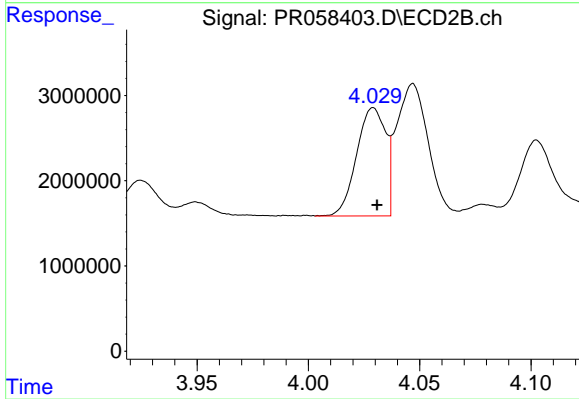
#15 AR-1232-5

R.T.: 4.492 min  
 Delta R.T.: -0.002 min  
 Response: 8717820  
 Conc: 242.94 ng/ml



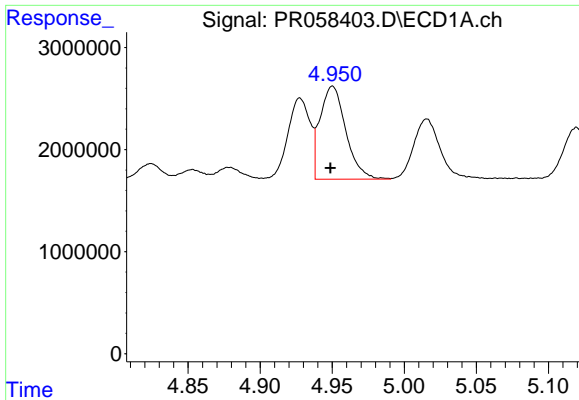
#16 AR-1242-1

R.T.: 4.928 min  
 Delta R.T.: 0.000 min  
 Response: 8521348  
 Conc: 129.94 ng/ml



#16 AR-1242-1

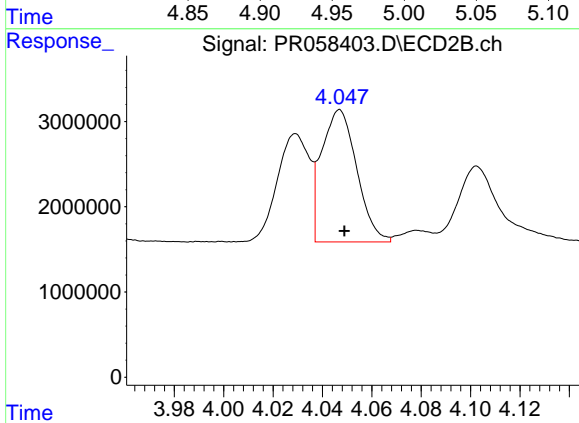
R.T.: 4.029 min  
 Delta R.T.: -0.002 min  
 Response: 11488422  
 Conc: 128.67 ng/ml



#17 AR-1242-2

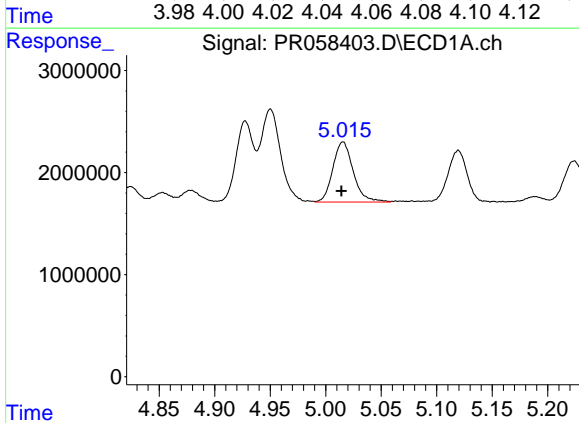
R.T.: 4.950 min  
 Delta R.T.: 0.001 min  
 Response: 11352021  
 Conc: 128.33 ng/ml

Instrument :  
 ECD\_R  
 ClientSampleId :



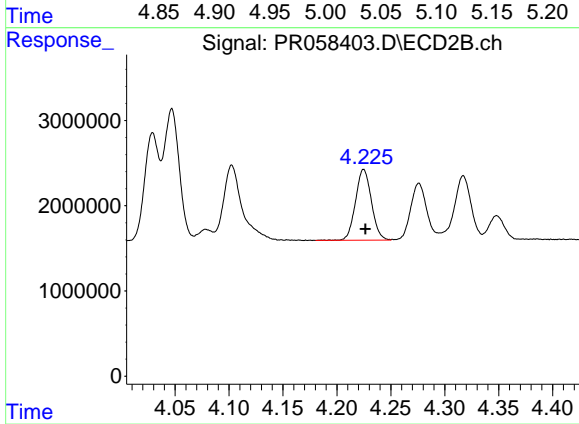
#17 AR-1242-2

R.T.: 4.047 min  
 Delta R.T.: -0.002 min  
 Response: 15379859  
 Conc: 126.17 ng/ml



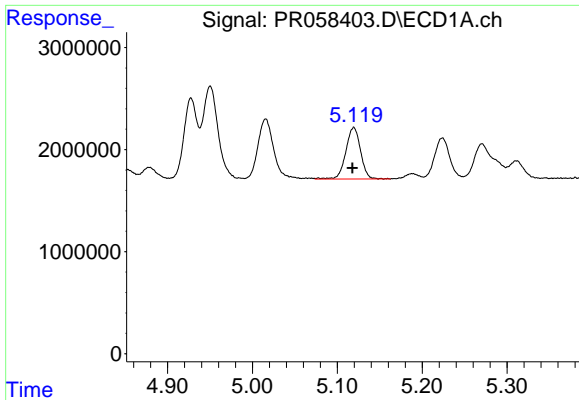
#18 AR-1242-3

R.T.: 5.016 min  
 Delta R.T.: 0.001 min  
 Response: 7552716  
 Conc: 130.25 ng/ml



#18 AR-1242-3

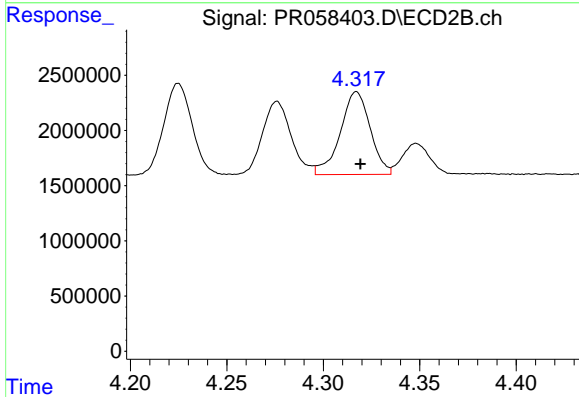
R.T.: 4.225 min  
 Delta R.T.: -0.002 min  
 Response: 8527243  
 Conc: 130.88 ng/ml



#19 AR-1242-4

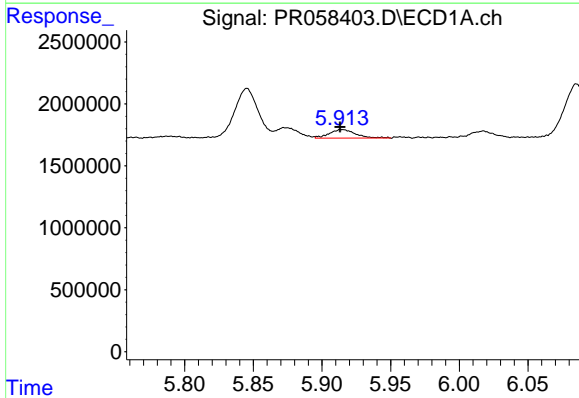
R.T.: 5.119 min  
 Delta R.T.: 0.002 min  
 Response: 6095604  
 Conc: 129.43 ng/ml

Instrument :  
 ECD\_R  
 ClientSampleId :



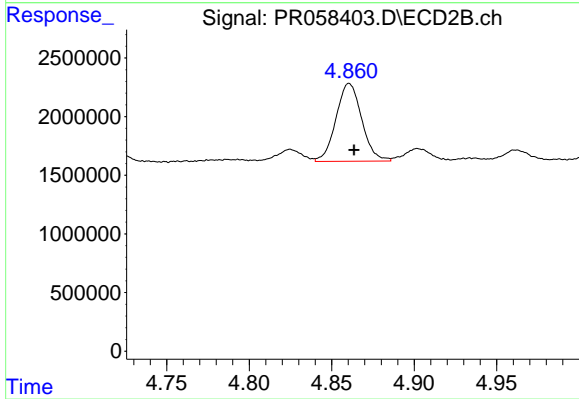
#19 AR-1242-4

R.T.: 4.317 min  
 Delta R.T.: -0.002 min  
 Response: 8112161  
 Conc: 131.23 ng/ml



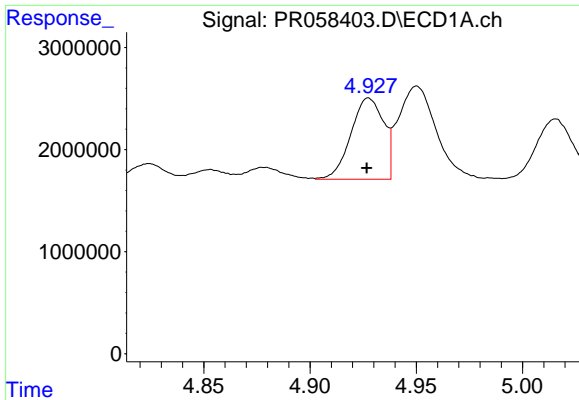
#20 AR-1242-5

R.T.: 5.915 min  
 Delta R.T.: 0.002 min  
 Response: 920299  
 Conc: 17.37 ng/ml



#20 AR-1242-5

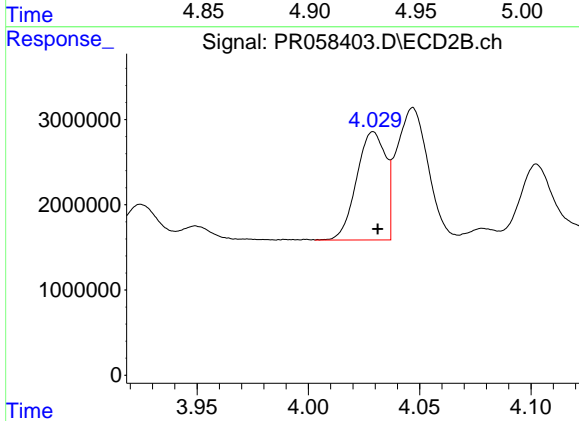
R.T.: 4.861 min  
 Delta R.T.: -0.003 min  
 Response: 7197589  
 Conc: 87.56 ng/ml



#21 AR-1248-1

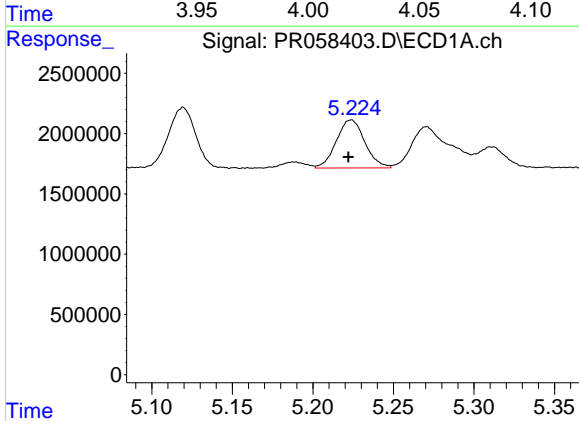
R.T.: 4.928 min  
 Delta R.T.: 0.000 min  
 Response: 8521348  
 Conc: 165.09 ng/ml

Instrument :  
 ECD\_R  
 ClientSampleId :



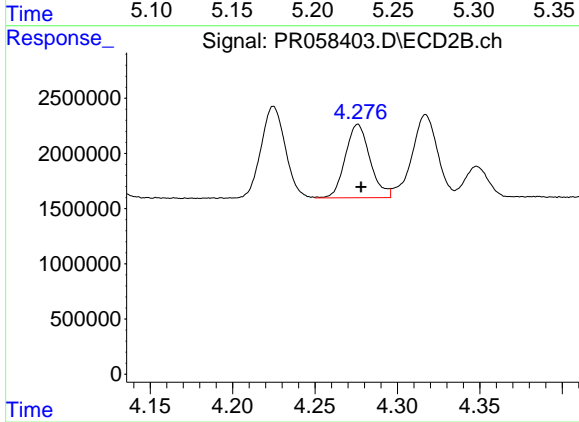
#21 AR-1248-1

R.T.: 4.029 min  
 Delta R.T.: -0.002 min  
 Response: 11488422  
 Conc: 165.58 ng/ml



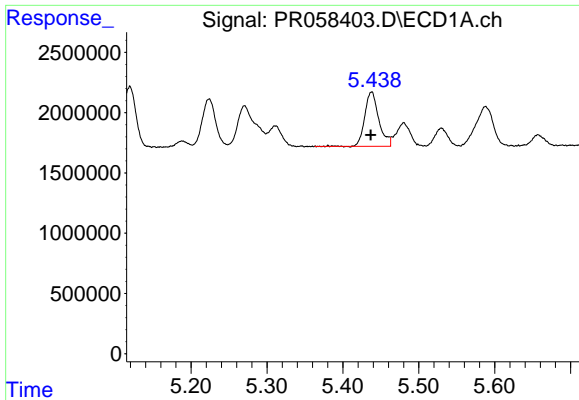
#22 AR-1248-2

R.T.: 5.224 min  
 Delta R.T.: 0.002 min  
 Response: 4926727  
 Conc: 72.99 ng/ml



#22 AR-1248-2

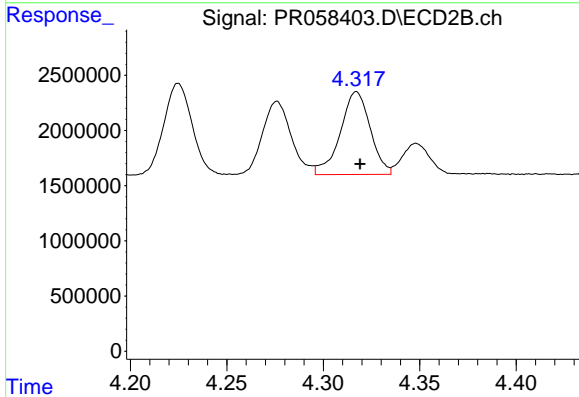
R.T.: 4.276 min  
 Delta R.T.: -0.002 min  
 Response: 6930361  
 Conc: 74.51 ng/ml



#23 AR-1248-3

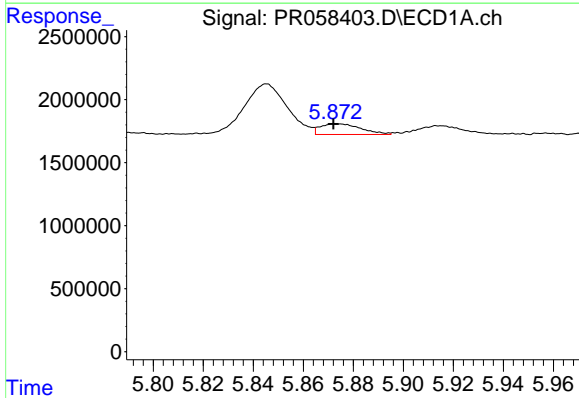
R.T.: 5.438 min  
 Delta R.T.: 0.001 min  
 Response: 5823449  
 Conc: 71.88 ng/ml

Instrument :  
 ECD\_R  
 ClientSampleId :



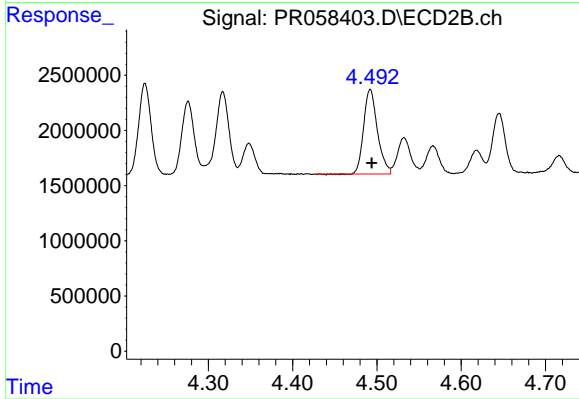
#23 AR-1248-3

R.T.: 4.317 min  
 Delta R.T.: -0.002 min  
 Response: 8112161  
 Conc: 85.72 ng/ml



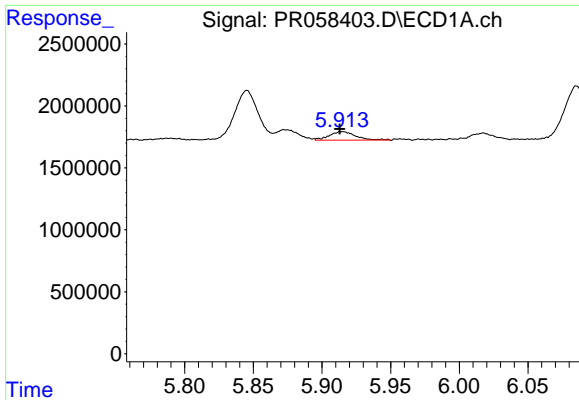
#24 AR-1248-4

R.T.: 5.873 min  
 Delta R.T.: 0.001 min  
 Response: 959083  
 Conc: 10.12 ng/ml



#24 AR-1248-4

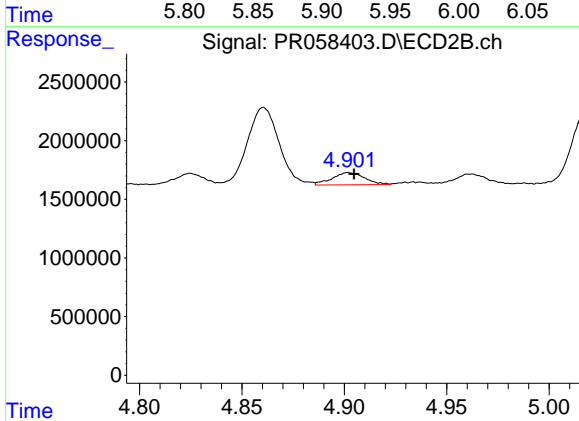
R.T.: 4.492 min  
 Delta R.T.: -0.002 min  
 Response: 8717820  
 Conc: 75.06 ng/ml



#25 AR-1248-5

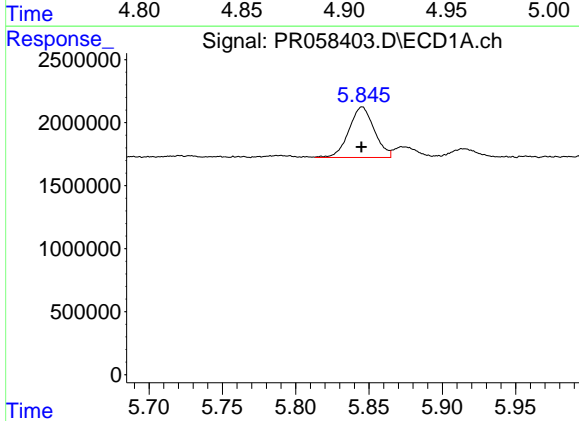
R.T.: 5.915 min  
 Delta R.T.: 0.002 min  
 Response: 920299  
 Conc: 9.98 ng/ml

Instrument :  
 ECD\_R  
 ClientSampleId :



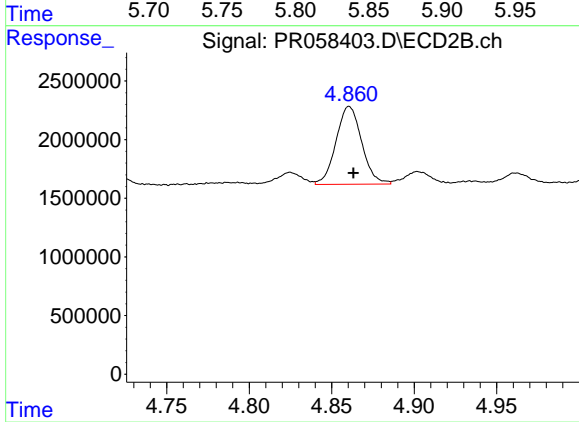
#25 AR-1248-5

R.T.: 4.902 min  
 Delta R.T.: -0.003 min  
 Response: 1163264  
 Conc: 9.66 ng/ml



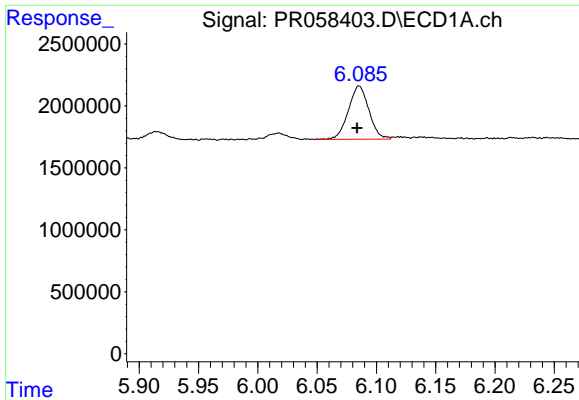
#26 AR-1254-1

R.T.: 5.845 min  
 Delta R.T.: 0.000 min  
 Response: 4834303  
 Conc: 54.32 ng/ml



#26 AR-1254-1

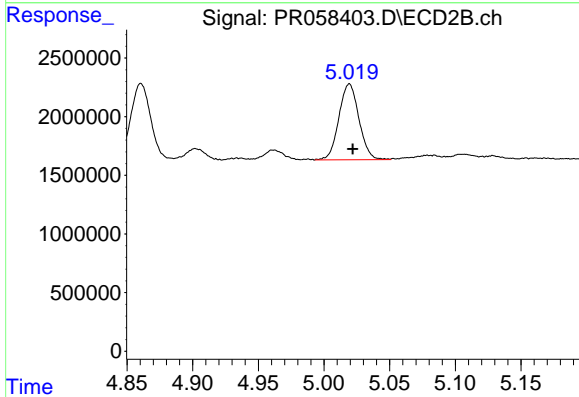
R.T.: 4.861 min  
 Delta R.T.: -0.003 min  
 Response: 7197589  
 Conc: 42.26 ng/ml



#27 AR-1254-2

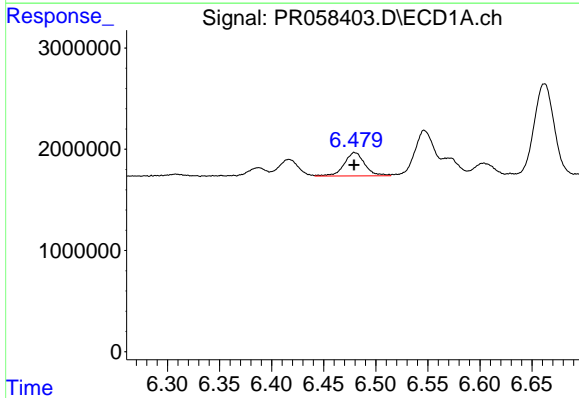
R.T.: 6.085 min  
 Delta R.T.: 0.002 min  
 Response: 5178637  
 Conc: 36.99 ng/ml

Instrument :  
 ECD\_R  
 ClientSampleId :



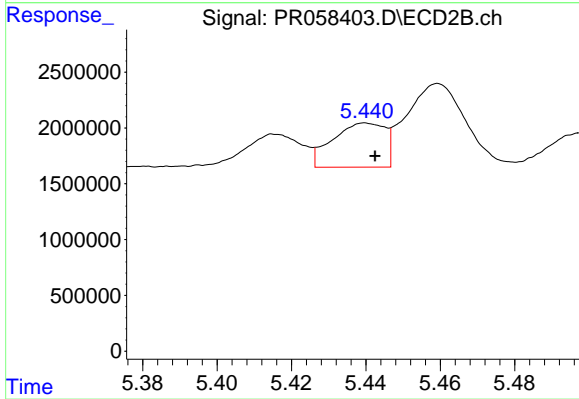
#27 AR-1254-2

R.T.: 5.019 min  
 Delta R.T.: -0.003 min  
 Response: 6876330  
 Conc: 46.85 ng/ml



#28 AR-1254-3

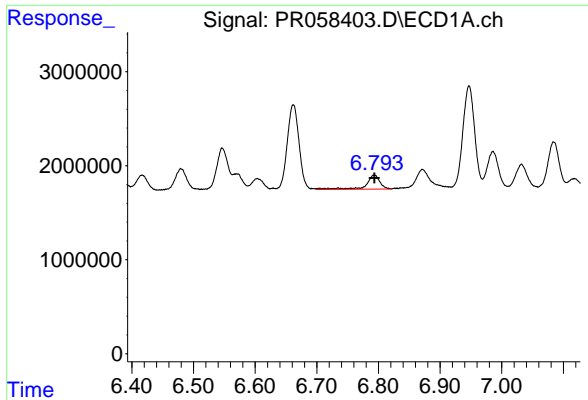
R.T.: 6.480 min  
 Delta R.T.: 0.000 min  
 Response: 3162238  
 Conc: 20.46 ng/ml



#28 AR-1254-3

R.T.: 5.440 min  
 Delta R.T.: -0.002 min  
 Response: 3860228  
 Conc: 15.78 ng/ml

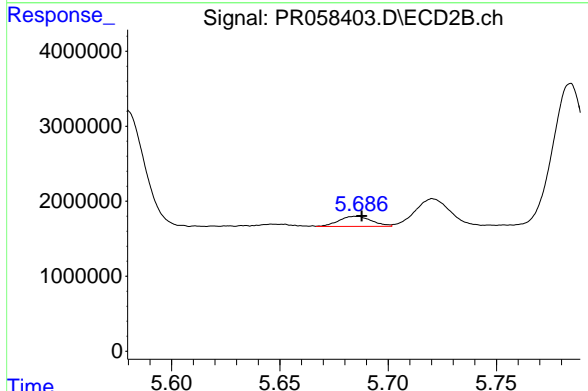




#29 AR-1254-4

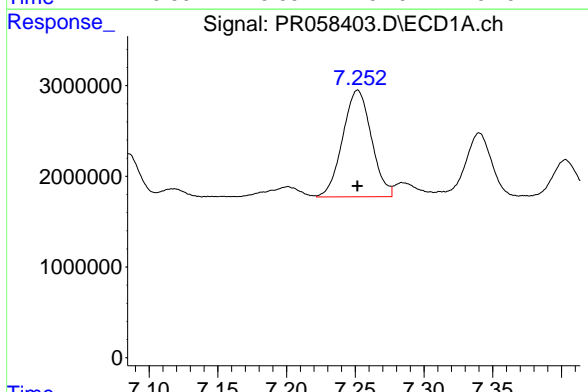
R.T.: 6.793 min  
 Delta R.T.: 0.000 min  
 Response: 2359620  
 Conc: 19.26 ng/ml

Instrument :  
 ECD\_R  
 ClientSampleId :



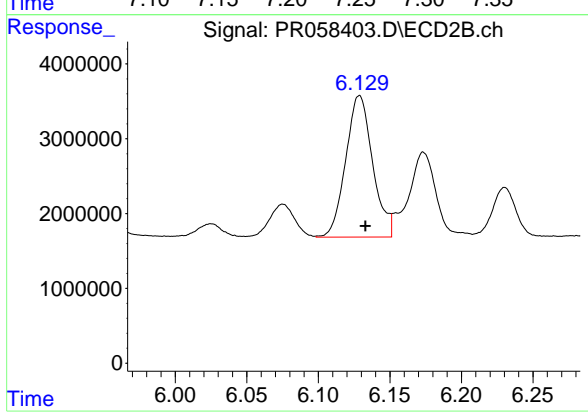
#29 AR-1254-4

R.T.: 5.685 min  
 Delta R.T.: -0.003 min  
 Response: 1424287  
 Conc: 9.01 ng/ml



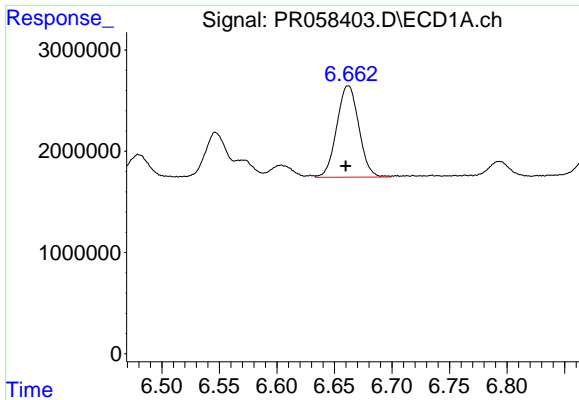
#30 AR-1254-5

R.T.: 7.252 min  
 Delta R.T.: 0.000 min  
 Response: 17117861  
 Conc: 128.22 ng/ml



#30 AR-1254-5

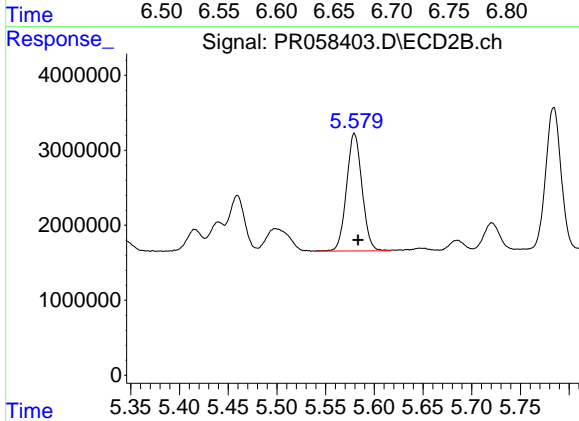
R.T.: 6.129 min  
 Delta R.T.: -0.004 min  
 Response: 24779938  
 Conc: 111.52 ng/ml



#31 AR-1260-1

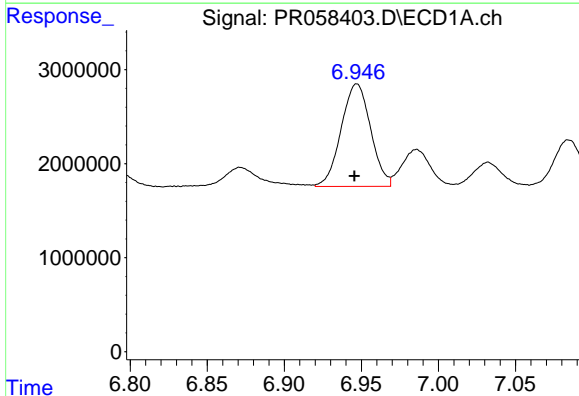
R.T.: 6.662 min  
 Delta R.T.: 0.002 min  
 Response: 12025970  
 Conc: 100.79 ng/ml

Instrument :  
 ECD\_R  
 ClientSampleId :



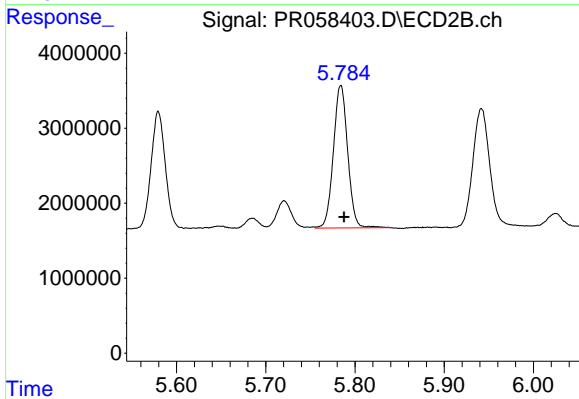
#31 AR-1260-1

R.T.: 5.580 min  
 Delta R.T.: -0.004 min  
 Response: 17342148  
 Conc: 106.81 ng/ml



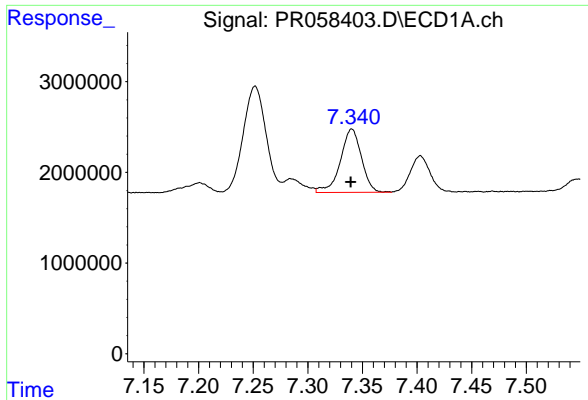
#32 AR-1260-2

R.T.: 6.947 min  
 Delta R.T.: 0.001 min  
 Response: 14519730  
 Conc: 98.28 ng/ml



#32 AR-1260-2

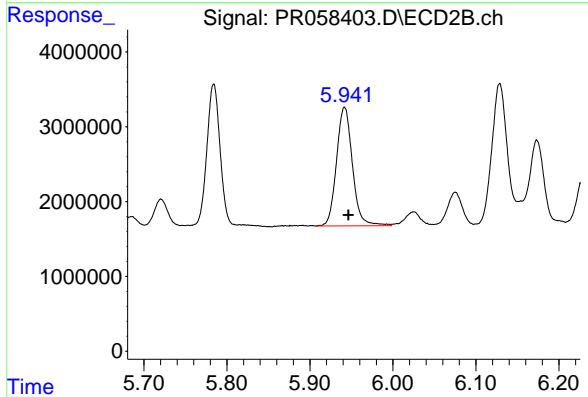
R.T.: 5.784 min  
 Delta R.T.: -0.004 min  
 Response: 21167388  
 Conc: 106.18 ng/ml



#33 AR-1260-3

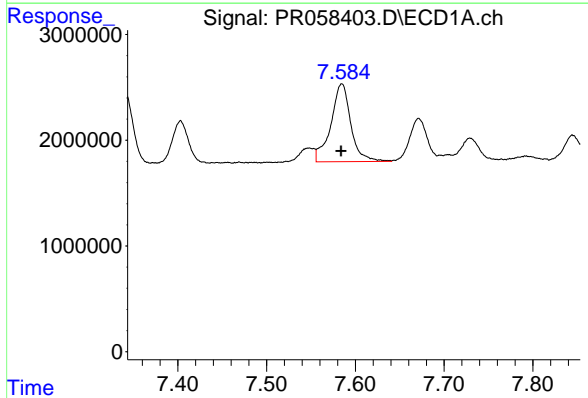
R.T.: 7.340 min  
 Delta R.T.: 0.000 min  
 Response: 9411116  
 Conc: 85.65 ng/ml

Instrument :  
 ECD\_R  
 ClientSampleId :



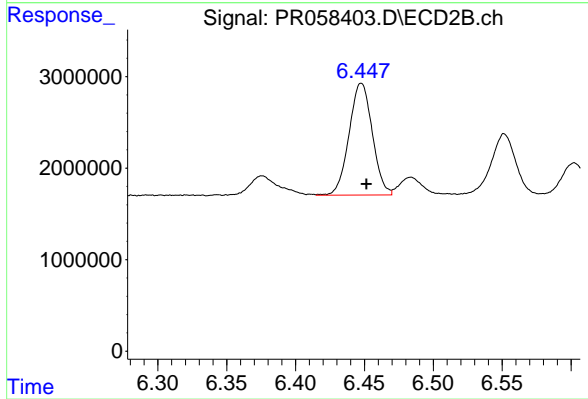
#33 AR-1260-3

R.T.: 5.942 min  
 Delta R.T.: -0.005 min  
 Response: 21188569  
 Conc: 108.92 ng/ml



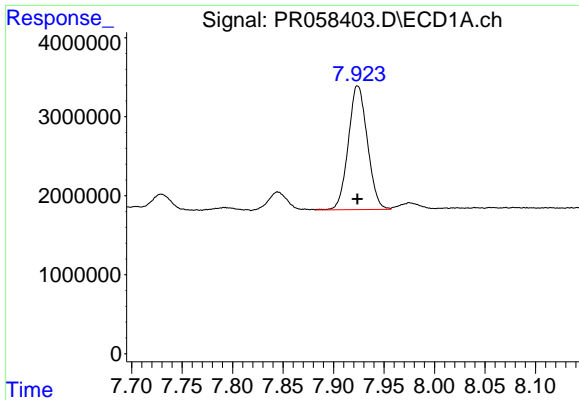
#34 AR-1260-4

R.T.: 7.585 min  
 Delta R.T.: 0.000 min  
 Response: 11516525  
 Conc: 90.11 ng/ml



#34 AR-1260-4

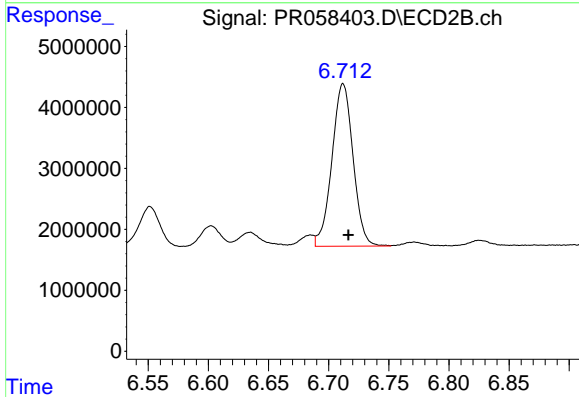
R.T.: 6.448 min  
 Delta R.T.: -0.004 min  
 Response: 14357569  
 Conc: 90.61 ng/ml



#35 AR-1260-5

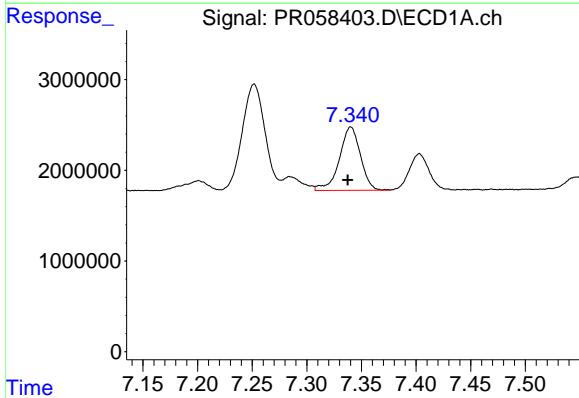
R.T.: 7.924 min  
 Delta R.T.: 0.000 min  
 Response: 20594550  
 Conc: 82.88 ng/ml

Instrument :  
 ECD\_R  
 ClientSampleId :



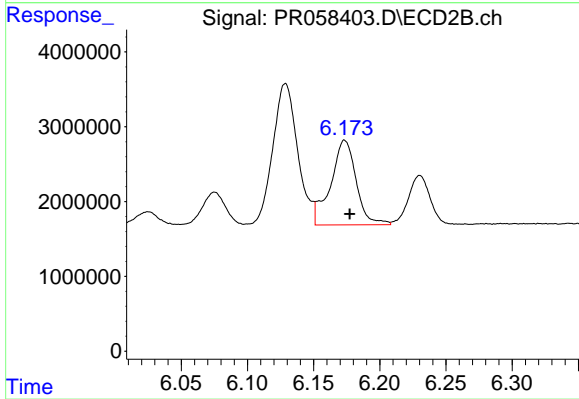
#35 AR-1260-5

R.T.: 6.712 min  
 Delta R.T.: -0.004 min  
 Response: 32644123  
 Conc: 86.09 ng/ml



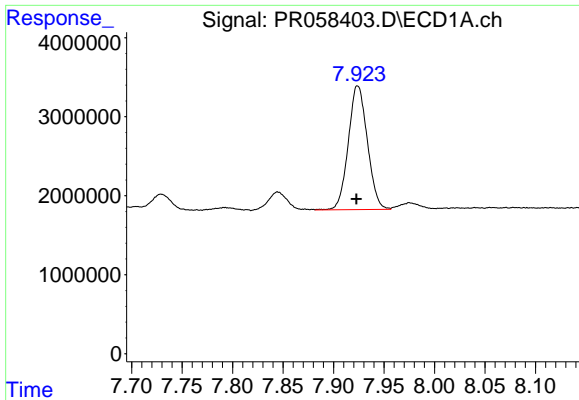
#36 AR-1262-1

R.T.: 7.340 min  
 Delta R.T.: 0.003 min  
 Response: 9411116  
 Conc: 58.35 ng/ml



#36 AR-1262-1

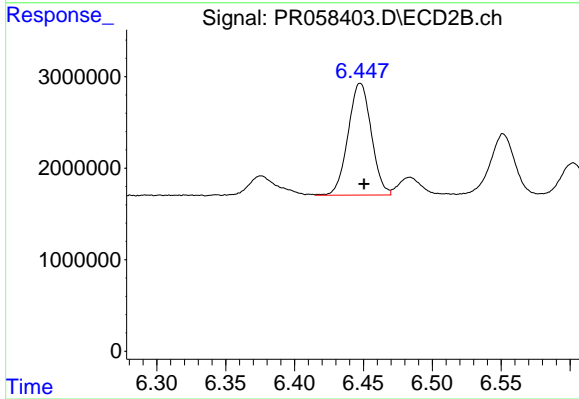
R.T.: 6.173 min  
 Delta R.T.: -0.004 min  
 Response: 15216682  
 Conc: 64.89 ng/ml



#37 AR-1262-2

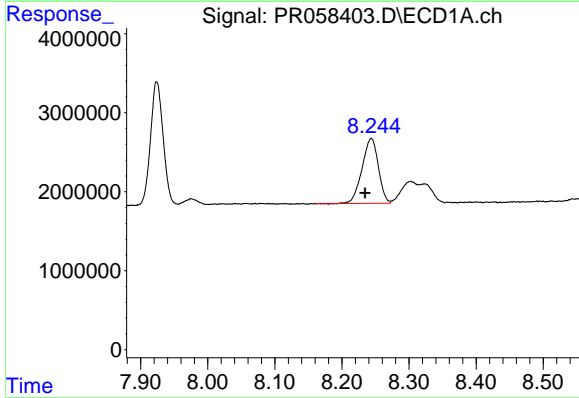
R.T.: 7.924 min  
 Delta R.T.: 0.002 min  
 Response: 20594550  
 Conc: 70.88 ng/ml

Instrument :  
 ECD\_R  
 ClientSampleId :



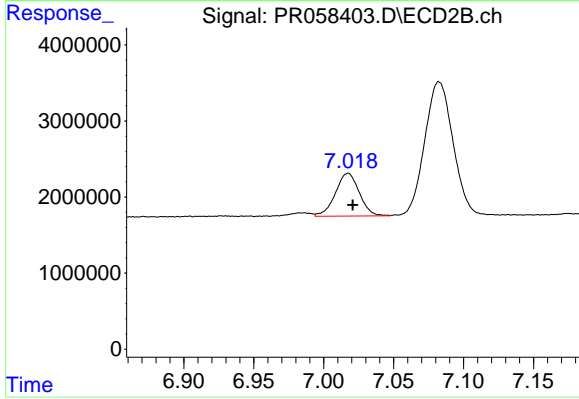
#37 AR-1262-2

R.T.: 6.448 min  
 Delta R.T.: -0.003 min  
 Response: 14357569  
 Conc: 67.10 ng/ml



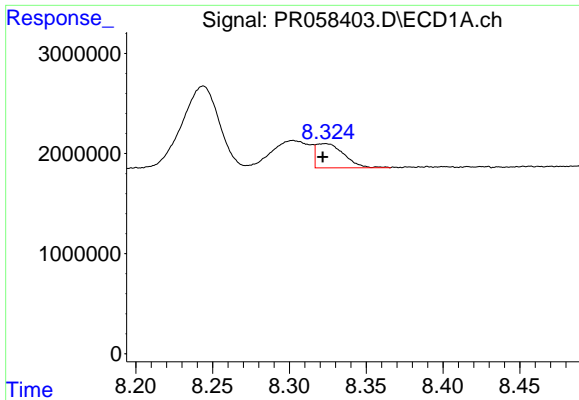
#38 AR-1262-3

R.T.: 8.244 min  
 Delta R.T.: 0.010 min  
 Response: 13885241  
 Conc: 69.01 ng/ml



#38 AR-1262-3

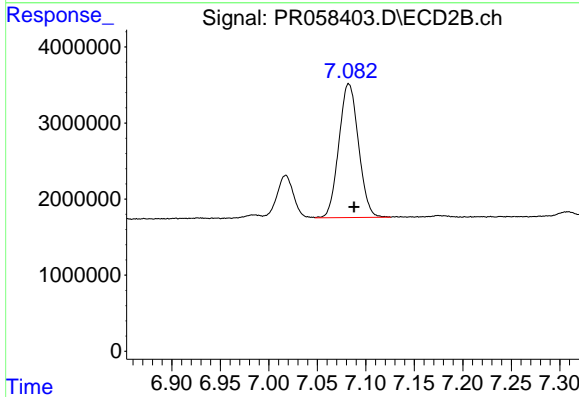
R.T.: 7.017 min  
 Delta R.T.: -0.003 min  
 Response: 6699004  
 Conc: 39.24 ng/ml



#39 AR-1262-4

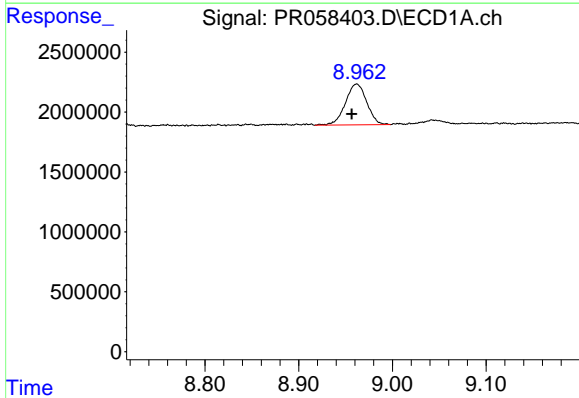
R.T.: 8.323 min  
 Delta R.T.: 0.002 min  
 Response: 3058287  
 Conc: 20.04 ng/ml

Instrument :  
 ECD\_R  
 ClientSampleId :



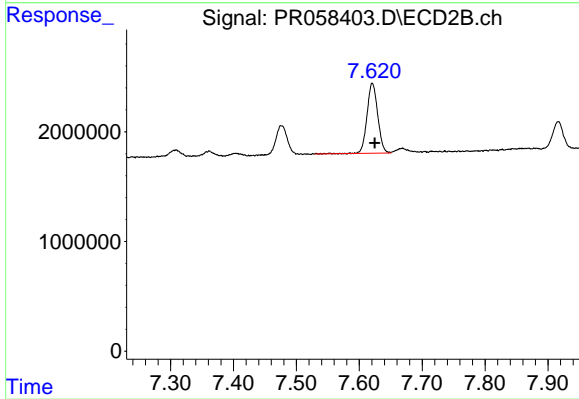
#39 AR-1262-4

R.T.: 7.082 min  
 Delta R.T.: -0.006 min  
 Response: 24786302  
 Conc: 75.56 ng/ml



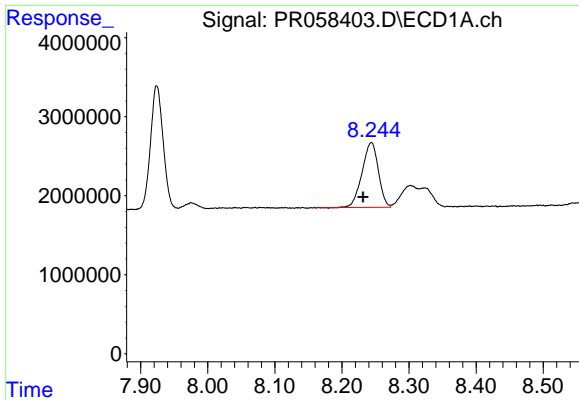
#40 AR-1262-5

R.T.: 8.962 min  
 Delta R.T.: 0.005 min  
 Response: 5384587  
 Conc: 47.93 ng/ml



#40 AR-1262-5

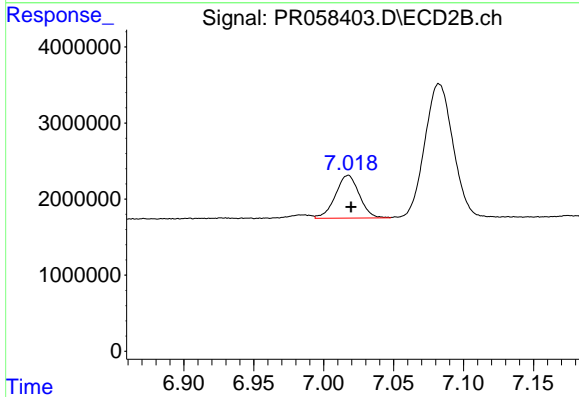
R.T.: 7.621 min  
 Delta R.T.: -0.004 min  
 Response: 7515569  
 Conc: 48.67 ng/ml



#41 AR-1268-1

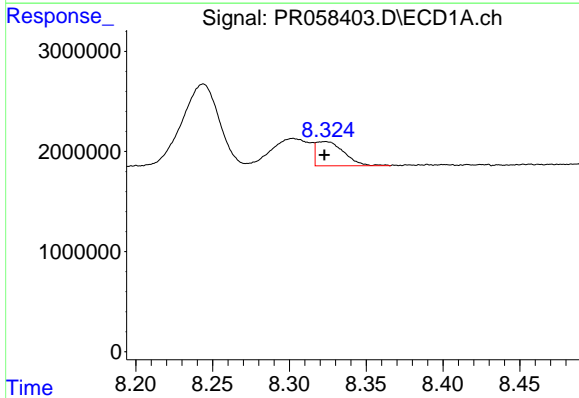
R.T.: 8.244 min  
 Delta R.T.: 0.013 min  
 Response: 13885241  
 Conc: 41.57 ng/ml

Instrument :  
 ECD\_R  
 ClientSampleId :



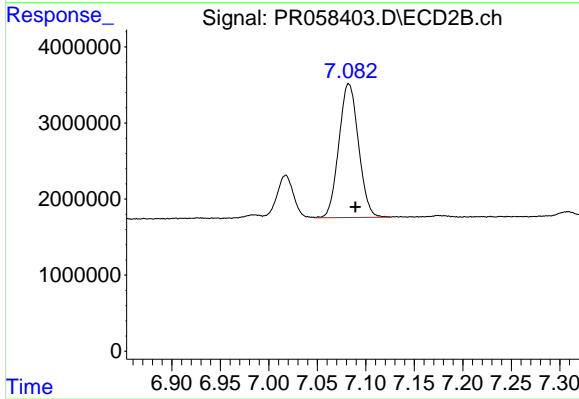
#41 AR-1268-1

R.T.: 7.017 min  
 Delta R.T.: -0.002 min  
 Response: 6699004  
 Conc: 13.38 ng/ml



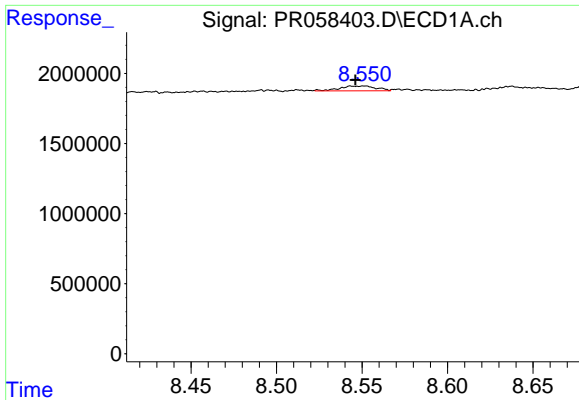
#42 AR-1268-2

R.T.: 8.323 min  
 Delta R.T.: 0.000 min  
 Response: 3058287  
 Conc: 10.09 ng/ml



#42 AR-1268-2

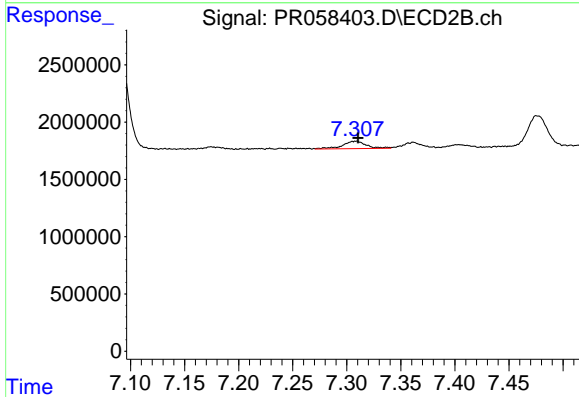
R.T.: 7.082 min  
 Delta R.T.: -0.007 min  
 Response: 24786302  
 Conc: 54.30 ng/ml



#43 AR-1268-3

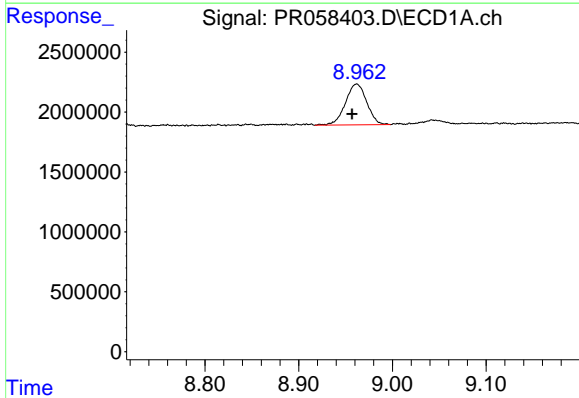
R.T.: 8.551 min  
 Delta R.T.: 0.005 min  
 Response: 500807  
 Conc: 1.94 ng/ml

Instrument :  
 ECD\_R  
 ClientSampleId :



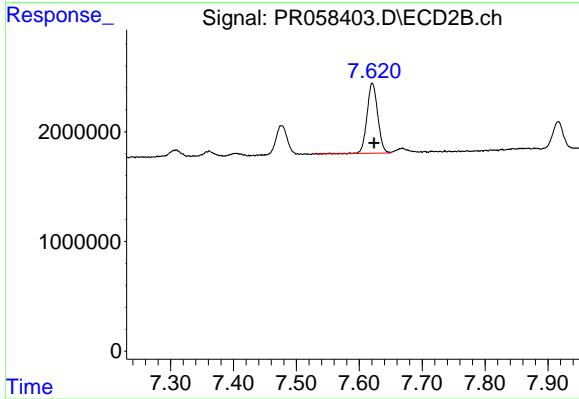
#43 AR-1268-3

R.T.: 7.308 min  
 Delta R.T.: -0.002 min  
 Response: 992617  
 Conc: 2.57 ng/ml



#44 AR-1268-4

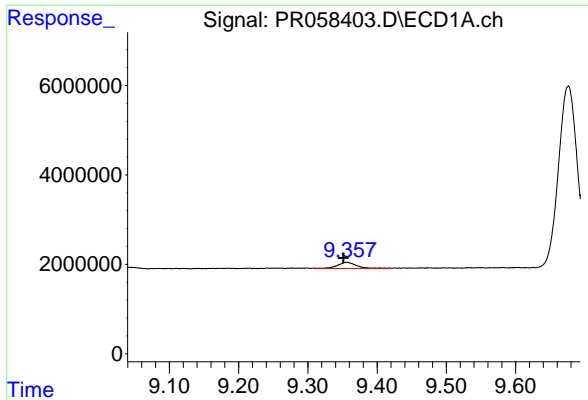
R.T.: 8.962 min  
 Delta R.T.: 0.005 min  
 Response: 5384587  
 Conc: 44.60 ng/ml



#44 AR-1268-4

R.T.: 7.621 min  
 Delta R.T.: -0.003 min  
 Response: 7515569  
 Conc: 45.32 ng/ml

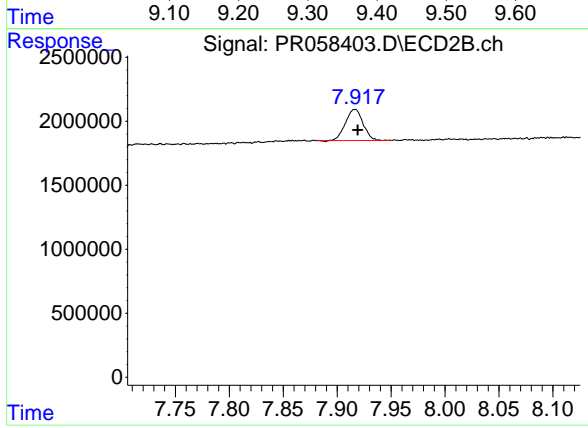




#45 AR-1268-5

R.T.: 9.357 min  
 Delta R.T.: 0.005 min  
 Response: 2566225  
 Conc: 3.01 ng/ml

Instrument :  
 ECD\_R  
 ClientSampleId :



#45 AR-1268-5

R.T.: 7.916 min  
 Delta R.T.: -0.003 min  
 Response: 2763076  
 Conc: 2.16 ng/ml