

Data Path : Z:\pestpcbsrv\HPCHEM1\ECD\_R\Data\PR112822\  
 Data File : PR058413.D  
 Signal(s) : Signal #1: ECD1A.ch Signal #2: ECD2B.ch  
 Acq On : 29 Nov 2022 04:21  
 Operator : AJ\MA  
 Sample : N5722-10  
 Misc :  
 ALS Vial : 56 Sample Multiplier: 1

Instrument :  
 ECD\_R  
 ClientSampleId :

Integration File signal 1: autoint1.e  
 Integration File signal 2: autoint2.e  
 Quant Time: Nov 29 05:44:09 2022  
 Quant Method : Z:\pestpcbsrv\HPCHEM1\ECD\_R\Method\PR111622CLP.M  
 Quant Title : GC EXTRACTABLES  
 QLast Update : Thu Nov 17 05:36:05 2022  
 Response via : Initial Calibration  
 Integrator: ChemStation

Volume Inj. : 1 µl  
 Signal #1 Phase : ZB MR1 Signal #2 Phase: ZB MR2  
 Signal #1 Info : 30Mx0.32mmx 0.5µm Signal #2 Info : 30M x 0.32mm x 0.25µm

Compound	RT#1	RT#2	Resp#1	Resp#2	ng/ml	ng/ml
System Monitoring Compounds						
1) SA Tetrachlo...	3.695	2.916	42461916	58691103	18.291	19.019
2) SA Decachlor...	9.676	8.158	64254032	85645089	29.803	30.714
Target Compounds						
3) L1 AR-1016-1	4.905	4.020	22068923	38093221	288.921	364.406 #
4) L1 AR-1016-2	4.993f	4.047	340383	2212851	3.288	15.540 #
5) L1 AR-1016-3	5.014	4.224	453853	1343128	6.768	17.547 #
6) L1 AR-1016-4	5.118	4.276	1519148	5376553	27.439	91.197 #
7) L1 AR-1016-5	5.437	4.493	2410535	10925122	42.509	138.444 #
8) L2 AR-1221-1	3.908	3.134	3098751	295263	103.659	8.222 #
9) L2 AR-1221-2	4.010	3.217	562442	1079753	26.702	41.779 #
10) L2 AR-1221-3	4.107	3.301	571728	1536976	8.912	18.410 #
11) L3 AR-1232-1	4.107	3.301	571728	1536976	10.567	21.922 #
12) L3 AR-1232-2	4.694f	4.047	826275	2212851	31.069	32.966
13) L3 AR-1232-3	4.993f	4.224	340383	1343128	6.782	37.553 #
14) L3 AR-1232-4	5.118	4.316	1519148	5058834	57.860	162.701 #
15) L3 AR-1232-5	5.224	4.493	3570771	10925122	183.948	304.449 #
16) L4 AR-1242-1	4.905	4.020	22068923	38093221	336.533	426.656 #
17) L4 AR-1242-2	4.905f	4.047	22068923	2212851	249.486	18.154 #
18) L4 AR-1242-3	5.014	4.224	453853	1343128	7.827	20.615 #
19) L4 AR-1242-4	5.118	4.316	1519148	5058834	32.256	81.839 #
20) L4 AR-1242-5	5.914	4.860	13126011	30339502	247.677	369.078 #
21) L5 AR-1248-1	4.905	4.020	22068923	38093221	427.548	549.032 #
22) L5 AR-1248-2	5.224	4.276	3570771	5376553	52.900	57.806
23) L5 AR-1248-3	5.437	4.316	2410535	5058834	29.755	53.455 #
24) L5 AR-1248-4	5.873	4.493	42883132	10925122	452.293	94.066 #
25) L5 AR-1248-5	5.914	4.903	13126011	18768106	142.281	155.789
26) L6 AR-1254-1	5.844	4.860	6359651	30339502	71.461	178.123 #
27) L6 AR-1254-2	6.084	5.020	11884954	5436139	84.892	37.038 #
28) L6 AR-1254-3	6.481	5.440	11649550	18194736	75.356	74.394
29) L6 AR-1254-4	6.794	5.685	9887307	13920776	80.690	88.086
30) L6 AR-1254-5	7.278	6.131	37838694	62945885	283.420	283.293
31) L7 AR-1260-1	6.662	5.589	3607424	14573838	30.234	89.763 #
32) L7 AR-1260-2	6.935	5.785	15775054	5097194	106.779	25.568 #
33) L7 AR-1260-3	7.341	5.941	2097609	8219646	19.091	42.255 #
34) L7 AR-1260-4	7.585	6.445	6310676	3201540	49.380	20.205 #
35) L7 AR-1260-5	7.925	6.711	3358195	6341045	13.515	16.724
36) L8 AR-1262-1	7.341	6.176	2097609	4370416	13.006	18.636 #
37) L8 AR-1262-2	7.925	6.445	3358195	3201540	11.557	14.962 #
38) L8 AR-1262-3	8.246	7.018	3509239	1959422	17.441	11.476 #
39) L8 AR-1262-4	8.308	7.082	1764824	5605034	11.566	17.086 #
40) L8 AR-1262-5	8.963	7.620	1827585	1352671	16.269	8.760 #
41) L9 AR-1268-1	8.246	7.018	3509239	1959422	10.507	3.913 #

Data Path : Z:\pestpcbsrv\HPCHEM1\ECD\_R\Data\PR112822\  
 Data File : PR058413.D  
 Signal(s) : Signal #1: ECD1A.ch Signal #2: ECD2B.ch  
 Acq On : 29 Nov 2022 04:21  
 Operator : AJ\MA  
 Sample : N5722-10  
 Misc :  
 ALS Vial : 56 Sample Multiplier: 1

Instrument :  
 ECD\_R  
 ClientSampleId :

Integration File signal 1: autoint1.e  
 Integration File signal 2: autoint2.e  
 Quant Time: Nov 29 05:44:09 2022  
 Quant Method : Z:\pestpcbsrv\HPCHEM1\ECD\_R\Method\PR111622CLP.M  
 Quant Title : GC EXTRACTABLES  
 QLast Update : Thu Nov 17 05:36:05 2022  
 Response via : Initial Calibration  
 Integrator: ChemStation

Volume Inj. : 1 µl  
 Signal #1 Phase : ZB MR1 Signal #2 Phase: ZB MR2  
 Signal #1 Info : 30Mx0.32mmx 0.5µm Signal #2 Info : 30M x 0.32mm x 0.25µm

	Compound	RT#1	RT#2	Resp#1	Resp#2	ng/ml	ng/ml
42)	L9 AR-1268-2	8.308	7.082	1764824	5605034	5.821	12.280 #
43)	L9 AR-1268-3	8.552	7.307	702255	1004858	2.723	2.606
44)	L9 AR-1268-4	8.963	7.620	1827585	1352671	15.139	8.157 #
45)	L9 AR-1268-5	9.362	7.917	2278226	1345438	2.674	1.050 #

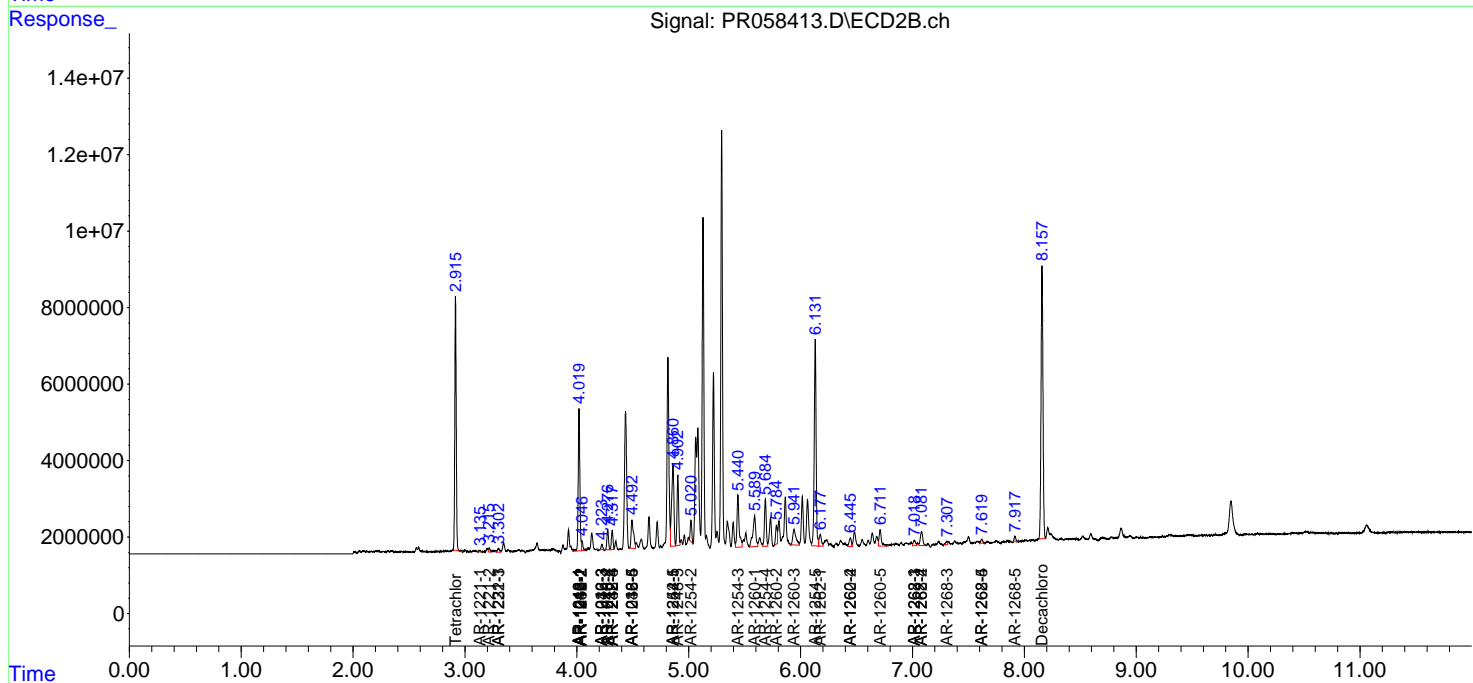
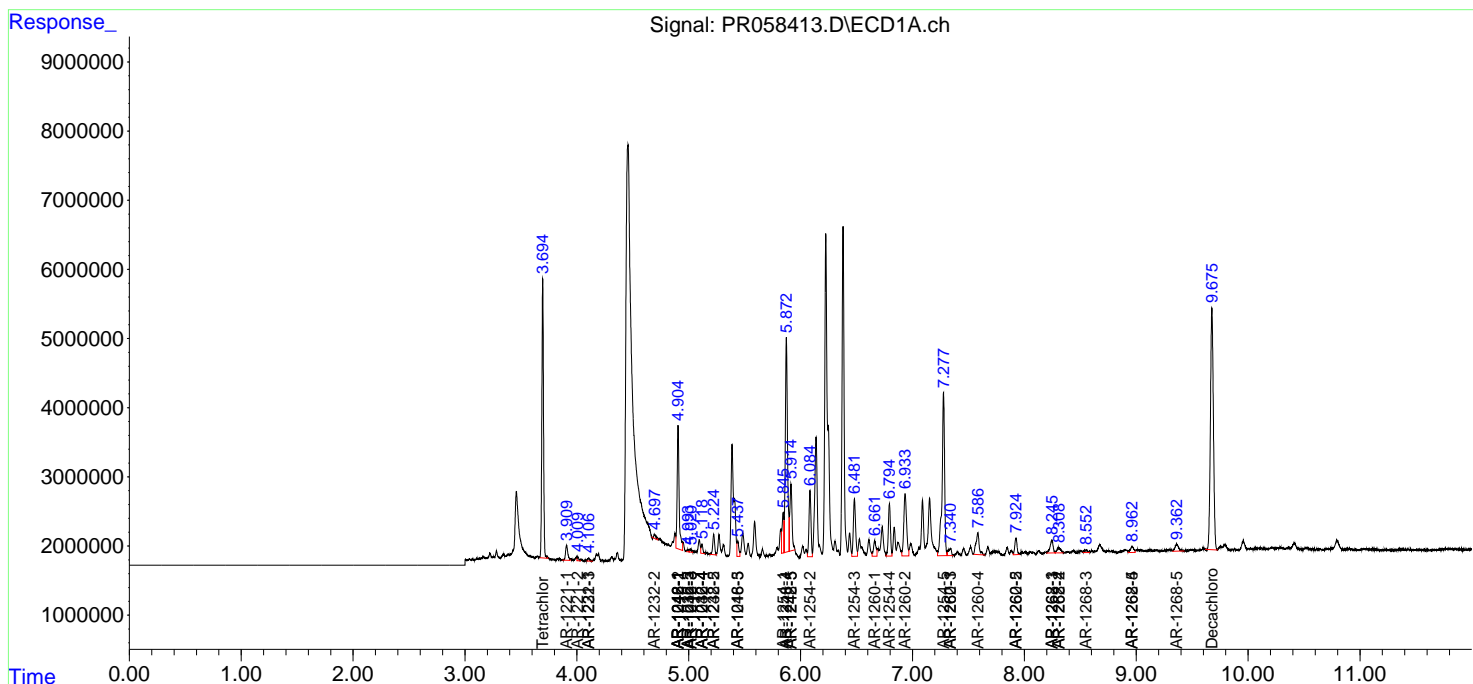
(f)=RT Delta > 1/2 Window (#)=Amounts differ by > 25% (m)=manual int.

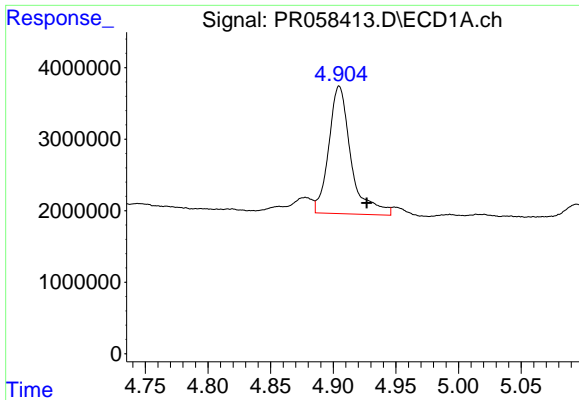
Data Path : Z:\pestpcbsrv\HPCHEM1\ECD\_R\Data\PR112822\  
 Data File : PR058413.D  
 Signal(s) : Signal #1: ECD1A.ch Signal #2: ECD2B.ch  
 Acq On : 29 Nov 2022 04:21  
 Operator : AJ\MA  
 Sample : N5722-10  
 Misc :  
 ALS Vial : 56 Sample Multiplier: 1

Instrument :  
 ECD\_R  
 ClientSampleId :

Integration File signal 1: autoint1.e  
 Integration File signal 2: autoint2.e  
 Quant Time: Nov 29 05:44:09 2022  
 Quant Method : Z:\pestpcbsrv\HPCHEM1\ECD\_R\Method\PR11622CLP.M  
 Quant Title : GC EXTRACTABLES  
 QLast Update : Thu Nov 17 05:36:05 2022  
 Response via : Initial Calibration  
 Integrator: ChemStation

Volume Inj. : 1 µl  
 Signal #1 Phase : ZB MR1 Signal #2 Phase: ZB MR2  
 Signal #1 Info : 30Mx0.32mmx 0.5µm Signal #2 Info : 30M x 0.32mm x 0.25µm

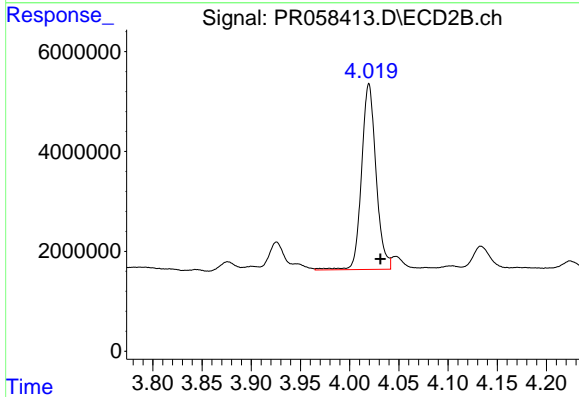




#3 AR-1016-1

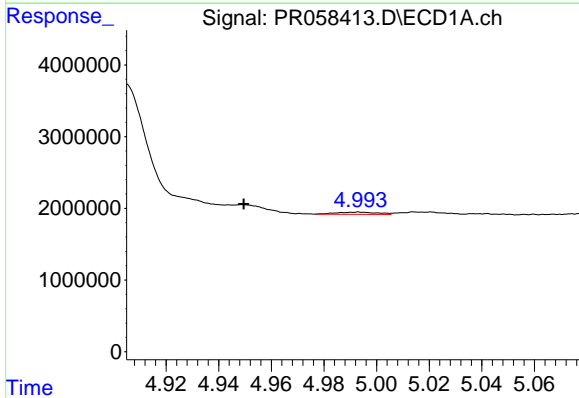
R.T.: 4.905 min  
 Delta R.T.: -0.022 min  
 Response: 22068923  
 Conc: 288.92 ng/ml

Instrument :  
 ECD\_R  
 ClientSampleId :



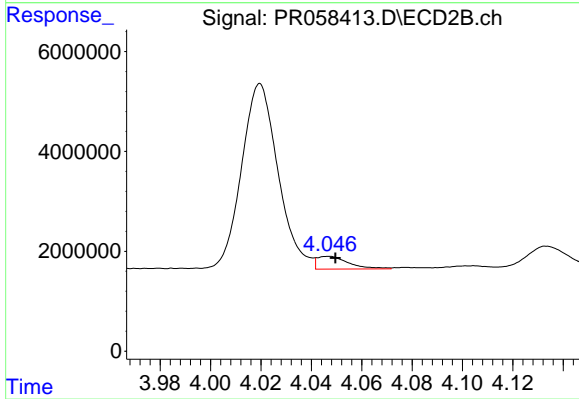
#3 AR-1016-1

R.T.: 4.020 min  
 Delta R.T.: -0.012 min  
 Response: 38093221  
 Conc: 364.41 ng/ml



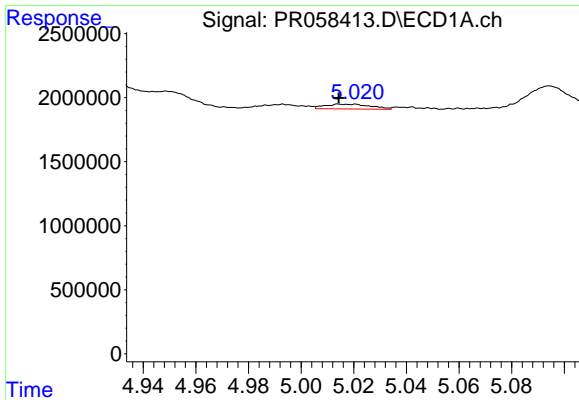
#4 AR-1016-2

R.T.: 4.993 min  
 Delta R.T.: 0.044 min  
 Response: 340383  
 Conc: 3.29 ng/ml



#4 AR-1016-2

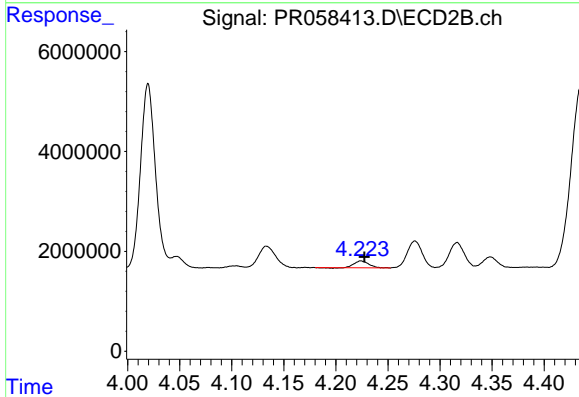
R.T.: 4.047 min  
 Delta R.T.: -0.003 min  
 Response: 2212851  
 Conc: 15.54 ng/ml



#5 AR-1016-3

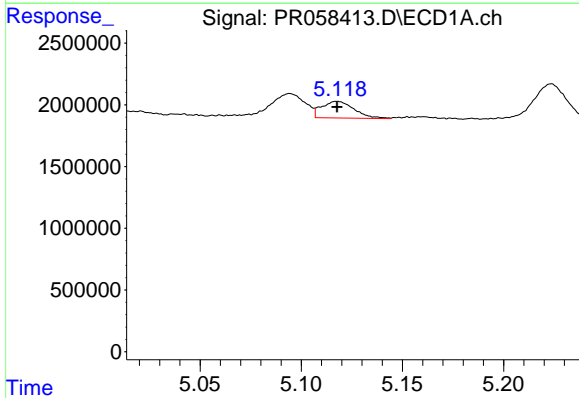
R.T.: 5.014 min  
 Delta R.T.: 0.000 min  
 Response: 453853  
 Conc: 6.77 ng/ml

Instrument :  
 ECD\_R  
 ClientSampleId :



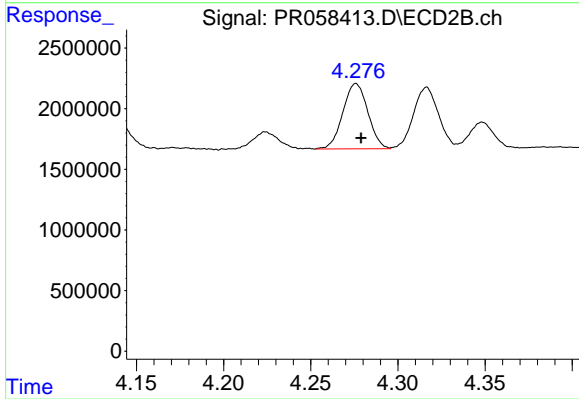
#5 AR-1016-3

R.T.: 4.224 min  
 Delta R.T.: -0.004 min  
 Response: 1343128  
 Conc: 17.55 ng/ml



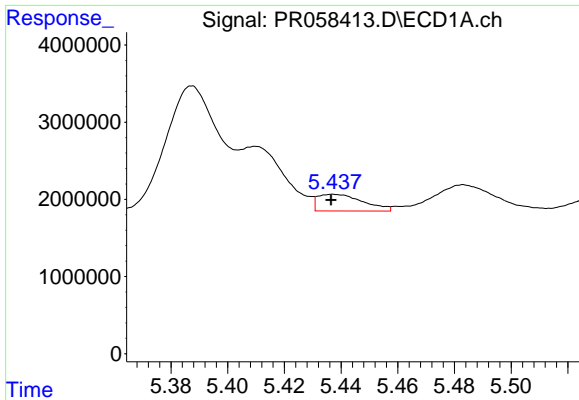
#6 AR-1016-4

R.T.: 5.118 min  
 Delta R.T.: 0.000 min  
 Response: 1519148  
 Conc: 27.44 ng/ml



#6 AR-1016-4

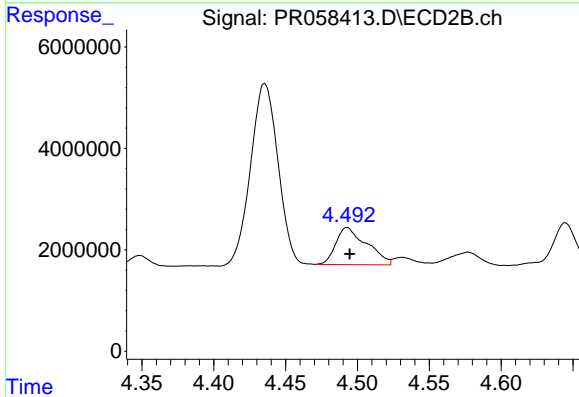
R.T.: 4.276 min  
 Delta R.T.: -0.003 min  
 Response: 5376553  
 Conc: 91.20 ng/ml



#7 AR-1016-5

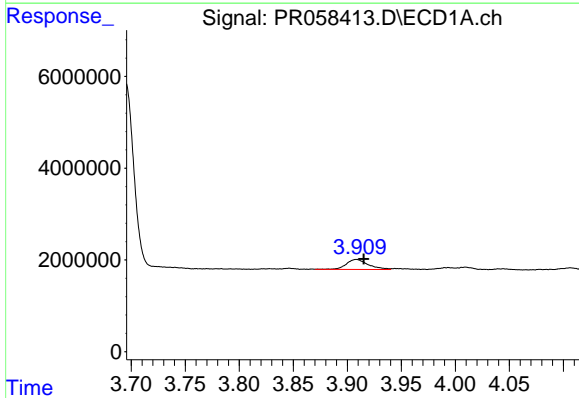
R.T.: 5.437 min  
 Delta R.T.: 0.000 min  
 Response: 2410535  
 Conc: 42.51 ng/ml

Instrument :  
 ECD\_R  
 ClientSampleId :



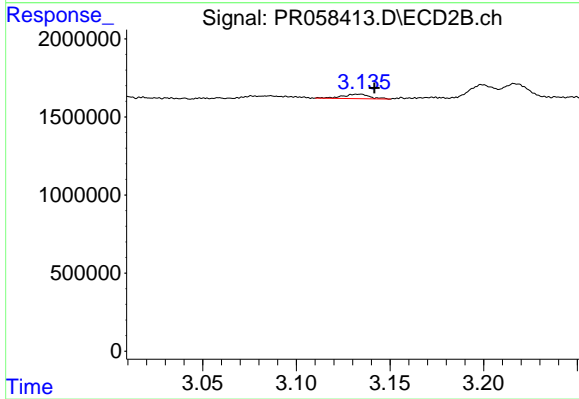
#7 AR-1016-5

R.T.: 4.493 min  
 Delta R.T.: -0.002 min  
 Response: 10925122  
 Conc: 138.44 ng/ml



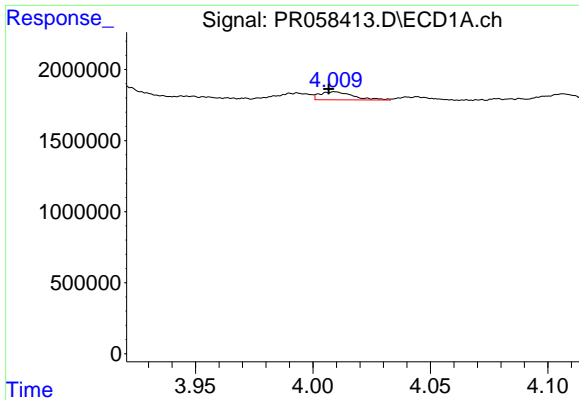
#8 AR-1221-1

R.T.: 3.908 min  
 Delta R.T.: -0.007 min  
 Response: 3098751  
 Conc: 103.66 ng/ml



#8 AR-1221-1

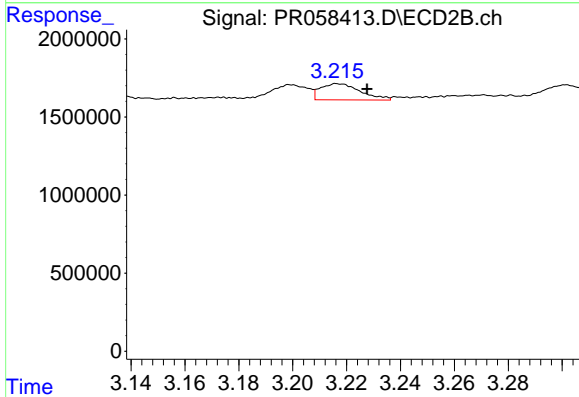
R.T.: 3.134 min  
 Delta R.T.: -0.008 min  
 Response: 295263  
 Conc: 8.22 ng/ml



#9 AR-1221-2

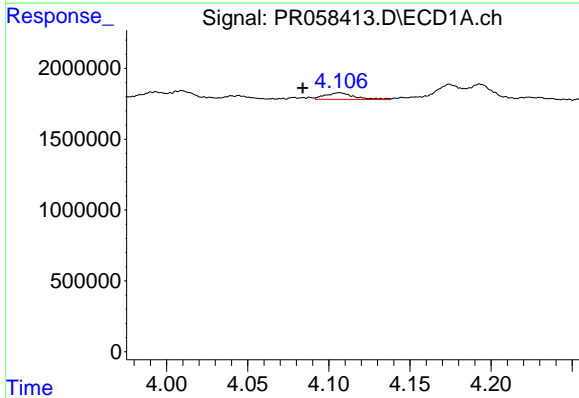
R.T.: 4.010 min  
 Delta R.T.: 0.003 min  
 Response: 562442  
 Conc: 26.70 ng/ml

Instrument :  
 ECD\_R  
 ClientSampleId :



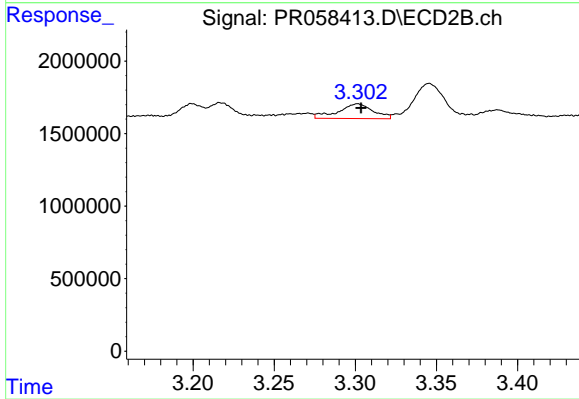
#9 AR-1221-2

R.T.: 3.217 min  
 Delta R.T.: -0.011 min  
 Response: 1079753  
 Conc: 41.78 ng/ml



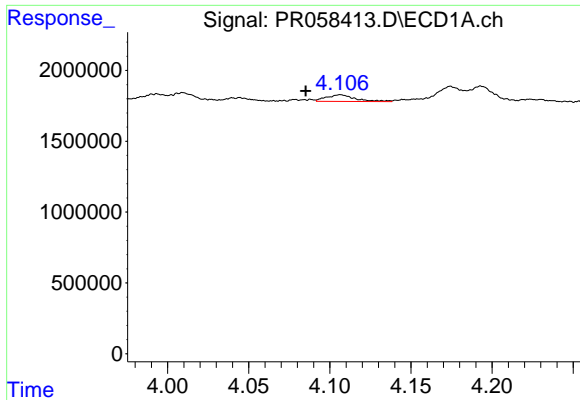
#10 AR-1221-3

R.T.: 4.107 min  
 Delta R.T.: 0.023 min  
 Response: 571728  
 Conc: 8.91 ng/ml



#10 AR-1221-3

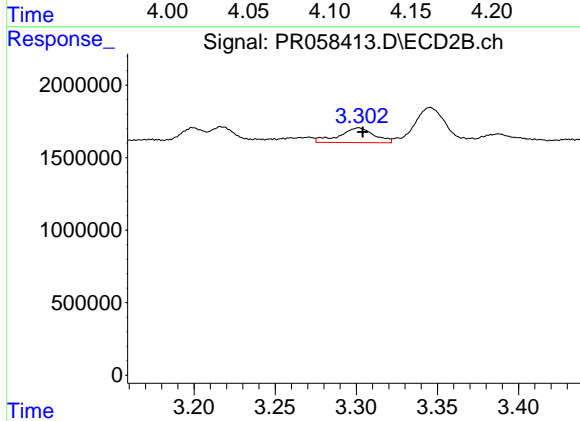
R.T.: 3.301 min  
 Delta R.T.: -0.002 min  
 Response: 1536976  
 Conc: 18.41 ng/ml



#11 AR-1232-1

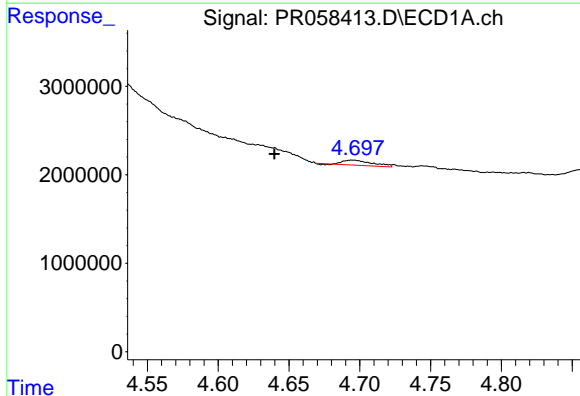
R.T.: 4.107 min  
 Delta R.T.: 0.021 min  
 Response: 571728  
 Conc: 10.57 ng/ml

Instrument :  
 ECD\_R  
 ClientSampleId :



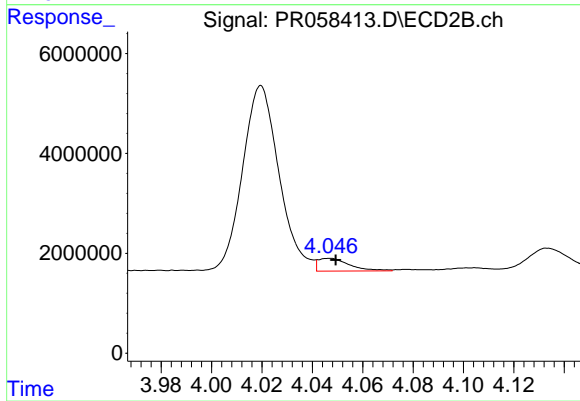
#11 AR-1232-1

R.T.: 3.301 min  
 Delta R.T.: -0.002 min  
 Response: 1536976  
 Conc: 21.92 ng/ml



#12 AR-1232-2

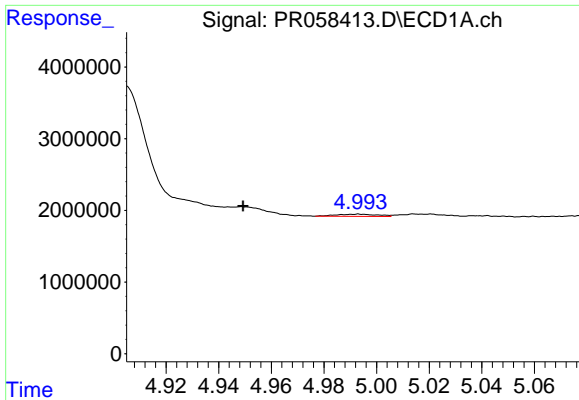
R.T.: 4.694 min  
 Delta R.T.: 0.055 min  
 Response: 826275  
 Conc: 31.07 ng/ml



#12 AR-1232-2

R.T.: 4.047 min  
 Delta R.T.: -0.002 min  
 Response: 2212851  
 Conc: 32.97 ng/ml

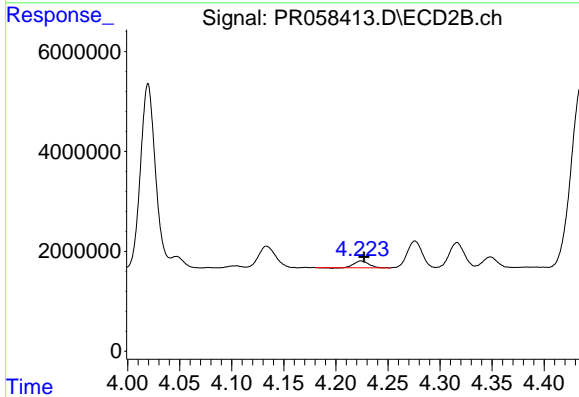




#13 AR-1232-3

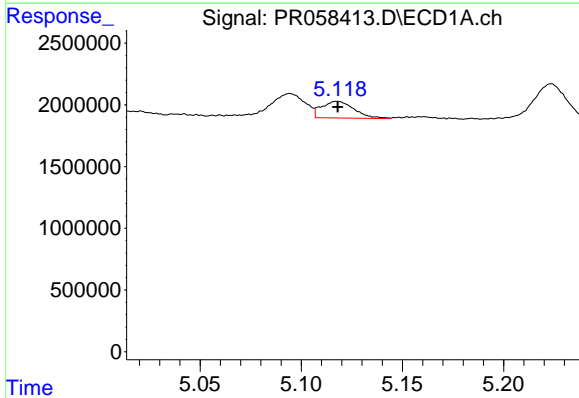
R.T.: 4.993 min  
 Delta R.T.: 0.044 min  
 Response: 340383  
 Conc: 6.78 ng/ml

Instrument :  
 ECD\_R  
 ClientSampleId :



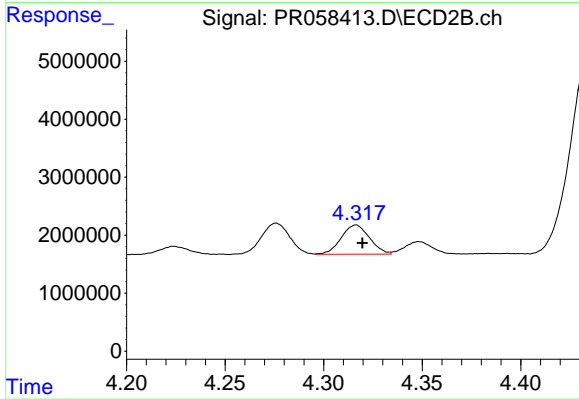
#13 AR-1232-3

R.T.: 4.224 min  
 Delta R.T.: -0.003 min  
 Response: 1343128  
 Conc: 37.55 ng/ml



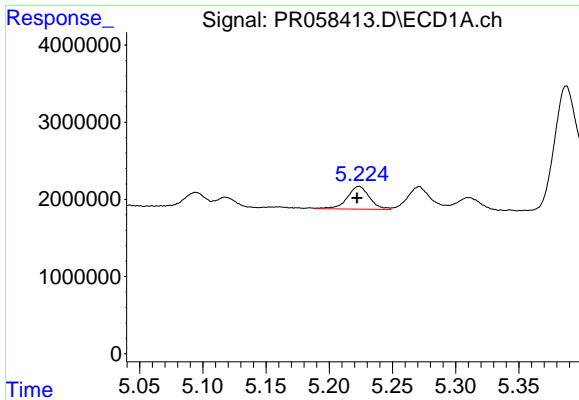
#14 AR-1232-4

R.T.: 5.118 min  
 Delta R.T.: 0.000 min  
 Response: 1519148  
 Conc: 57.86 ng/ml



#14 AR-1232-4

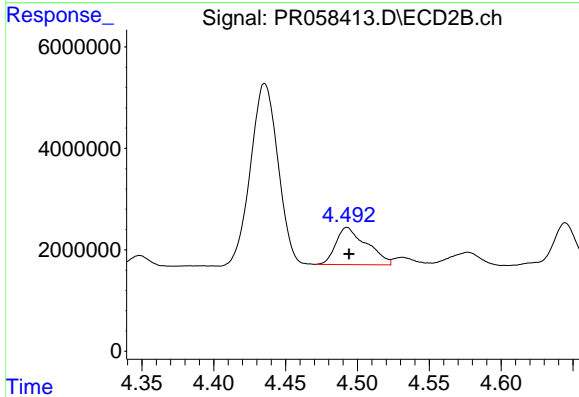
R.T.: 4.316 min  
 Delta R.T.: -0.003 min  
 Response: 5058834  
 Conc: 162.70 ng/ml



#15 AR-1232-5

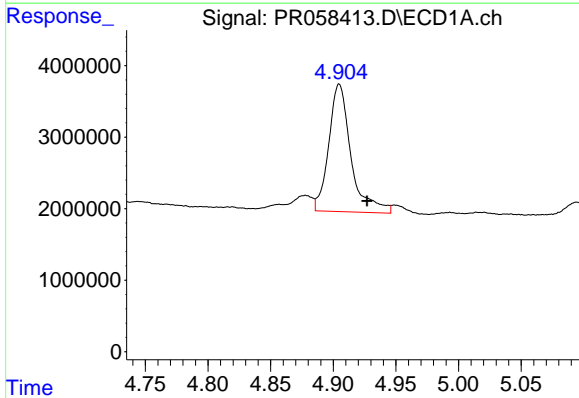
R.T.: 5.224 min  
 Delta R.T.: 0.002 min  
 Response: 3570771  
 Conc: 183.95 ng/ml

Instrument :  
 ECD\_R  
 ClientSampleId :



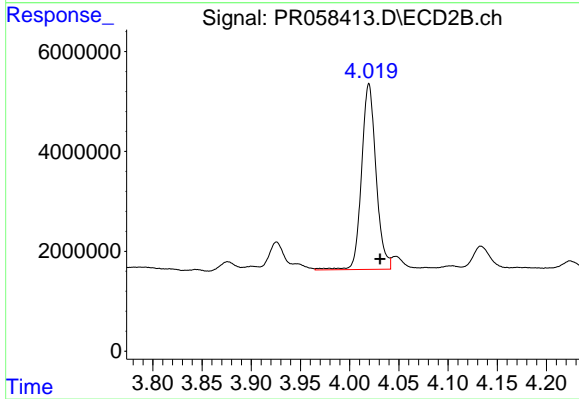
#15 AR-1232-5

R.T.: 4.493 min  
 Delta R.T.: -0.001 min  
 Response: 10925122  
 Conc: 304.45 ng/ml



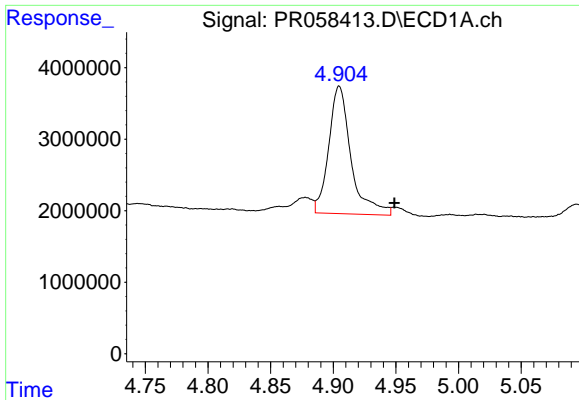
#16 AR-1242-1

R.T.: 4.905 min  
 Delta R.T.: -0.022 min  
 Response: 22068923  
 Conc: 336.53 ng/ml



#16 AR-1242-1

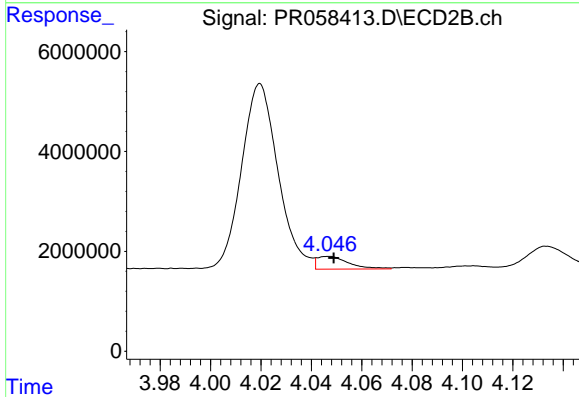
R.T.: 4.020 min  
 Delta R.T.: -0.011 min  
 Response: 38093221  
 Conc: 426.66 ng/ml



#17 AR-1242-2

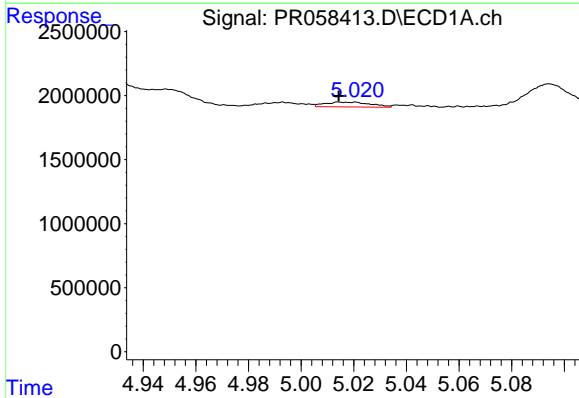
R.T.: 4.905 min  
 Delta R.T.: -0.044 min  
 Response: 22068923  
 Conc: 249.49 ng/ml

Instrument :  
 ECD\_R  
 ClientSampleId :



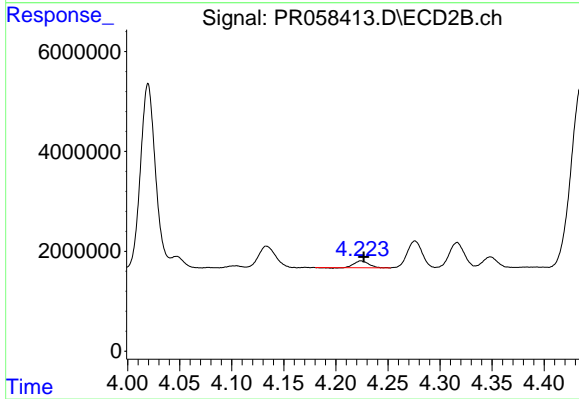
#17 AR-1242-2

R.T.: 4.047 min  
 Delta R.T.: -0.002 min  
 Response: 2212851  
 Conc: 18.15 ng/ml



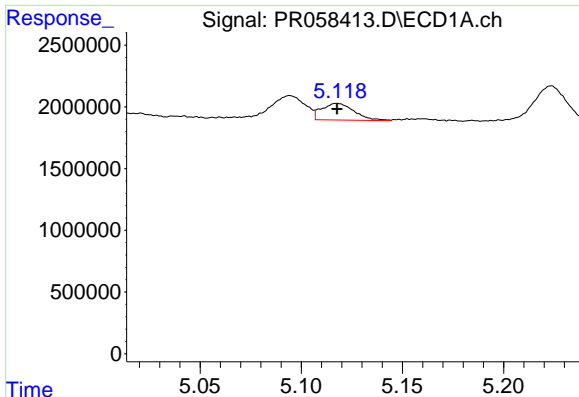
#18 AR-1242-3

R.T.: 5.014 min  
 Delta R.T.: 0.000 min  
 Response: 453853  
 Conc: 7.83 ng/ml



#18 AR-1242-3

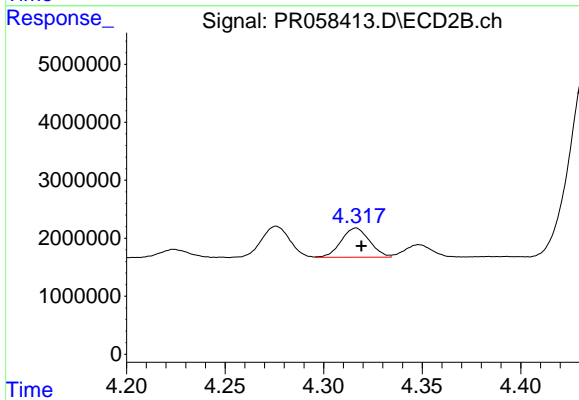
R.T.: 4.224 min  
 Delta R.T.: -0.002 min  
 Response: 1343128  
 Conc: 20.62 ng/ml



#19 AR-1242-4

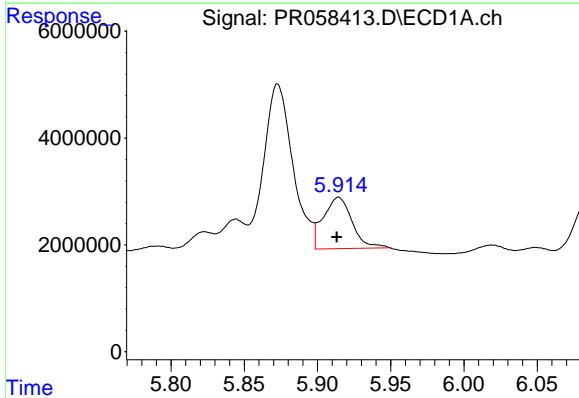
R.T.: 5.118 min  
 Delta R.T.: 0.000 min  
 Response: 1519148  
 Conc: 32.26 ng/ml

Instrument :  
 ECD\_R  
 ClientSampleId :



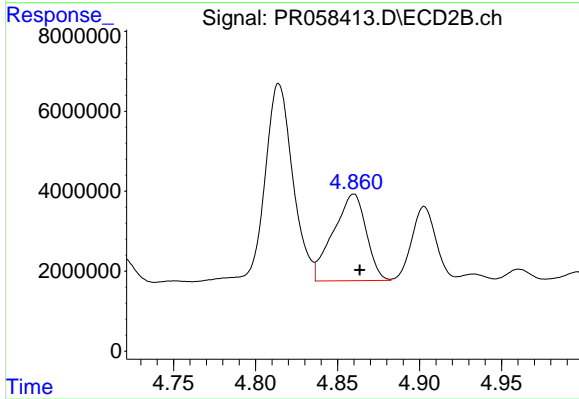
#19 AR-1242-4

R.T.: 4.316 min  
 Delta R.T.: -0.003 min  
 Response: 5058834  
 Conc: 81.84 ng/ml



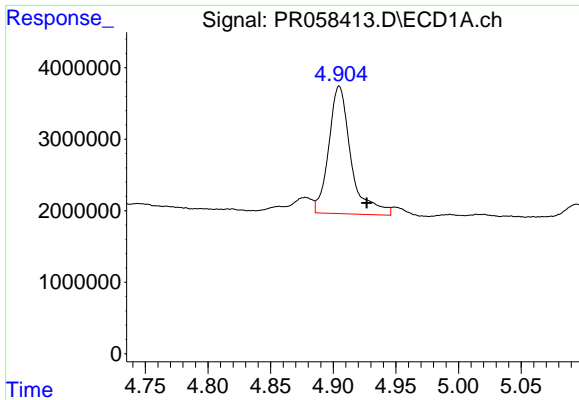
#20 AR-1242-5

R.T.: 5.914 min  
 Delta R.T.: 0.001 min  
 Response: 13126011  
 Conc: 247.68 ng/ml



#20 AR-1242-5

R.T.: 4.860 min  
 Delta R.T.: -0.004 min  
 Response: 30339502  
 Conc: 369.08 ng/ml

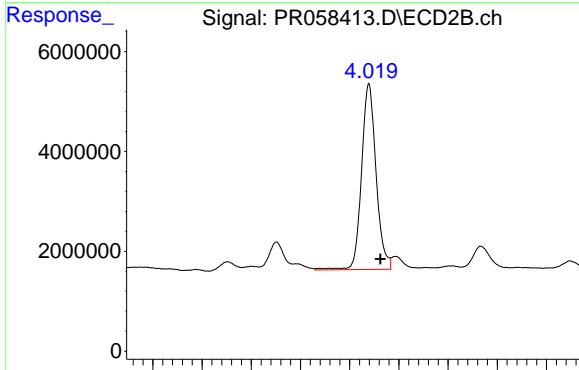


#21 AR-1248-1

R.T.: 4.905 min  
 Delta R.T.: -0.022 min  
 Response: 22068923  
 Conc: 427.55 ng/ml

Instrument :  
 ECD\_R  
 ClientSampleId :

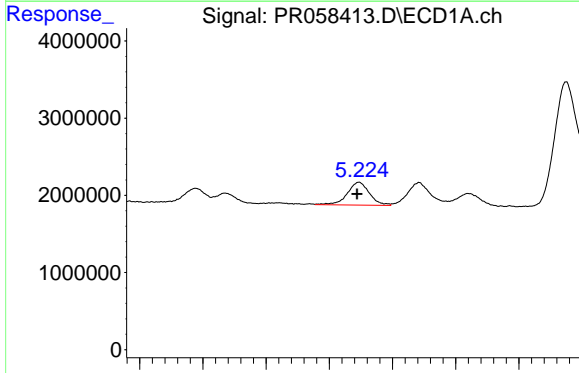
Time 4.75 4.80 4.85 4.90 4.95 5.00 5.05



#21 AR-1248-1

R.T.: 4.020 min  
 Delta R.T.: -0.011 min  
 Response: 38093221  
 Conc: 549.03 ng/ml

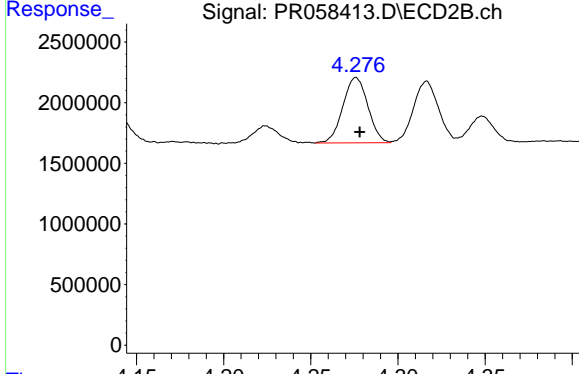
Time 3.80 3.85 3.90 3.95 4.00 4.05 4.10 4.15 4.20



#22 AR-1248-2

R.T.: 5.224 min  
 Delta R.T.: 0.002 min  
 Response: 3570771  
 Conc: 52.90 ng/ml

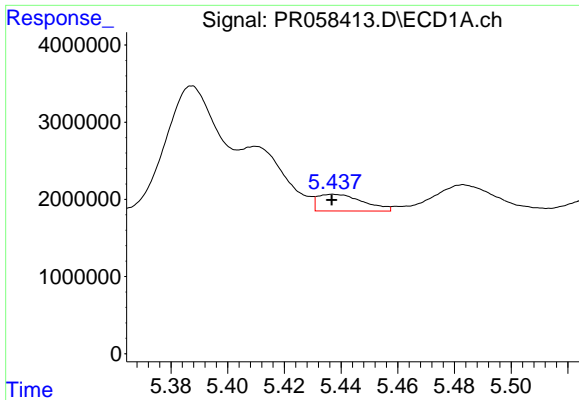
Time 5.05 5.10 5.15 5.20 5.25 5.30 5.35



#22 AR-1248-2

R.T.: 4.276 min  
 Delta R.T.: -0.002 min  
 Response: 5376553  
 Conc: 57.81 ng/ml

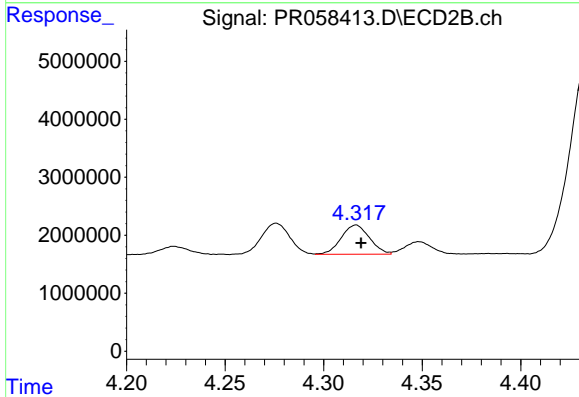
Time 4.15 4.20 4.25 4.30 4.35



#23 AR-1248-3

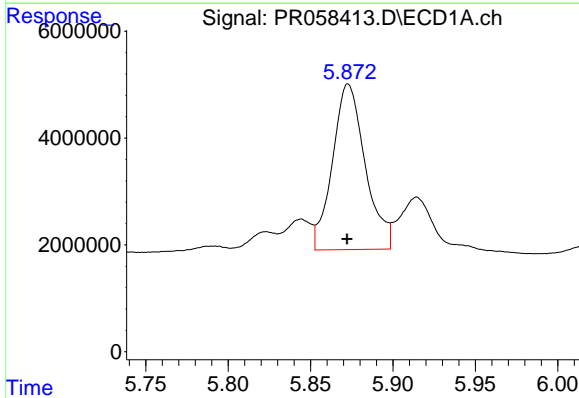
R.T.: 5.437 min  
 Delta R.T.: 0.000 min  
 Response: 2410535  
 Conc: 29.76 ng/ml

Instrument :  
 ECD\_R  
 ClientSampleId :



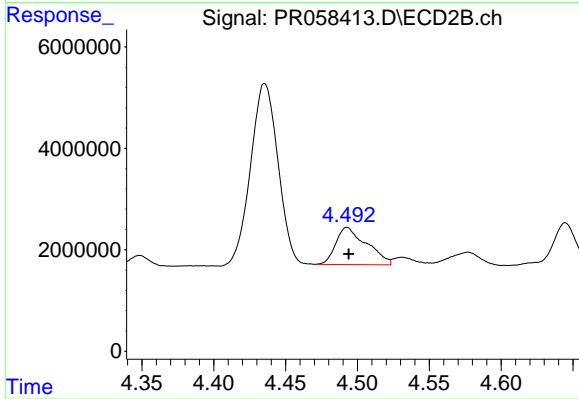
#23 AR-1248-3

R.T.: 4.316 min  
 Delta R.T.: -0.003 min  
 Response: 5058834  
 Conc: 53.46 ng/ml



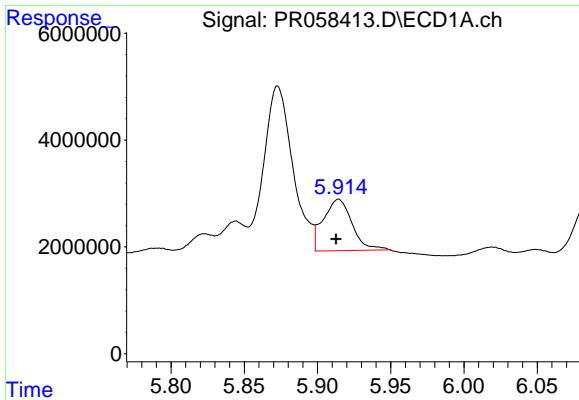
#24 AR-1248-4

R.T.: 5.873 min  
 Delta R.T.: 0.000 min  
 Response: 42883132  
 Conc: 452.29 ng/ml



#24 AR-1248-4

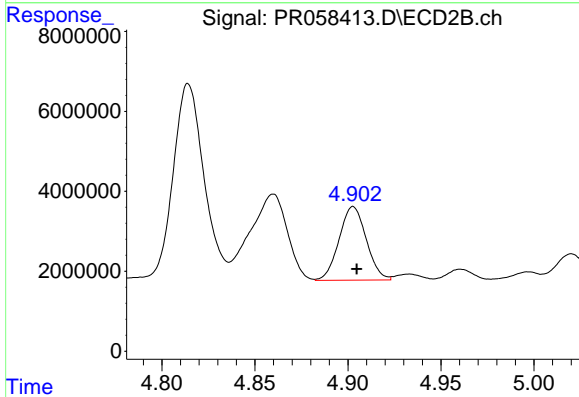
R.T.: 4.493 min  
 Delta R.T.: -0.001 min  
 Response: 10925122  
 Conc: 94.07 ng/ml



#25 AR-1248-5

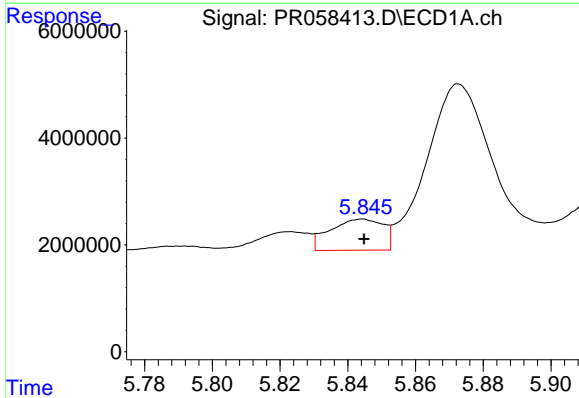
R.T.: 5.914 min  
 Delta R.T.: 0.002 min  
 Response: 13126011  
 Conc: 142.28 ng/ml

Instrument :  
 ECD\_R  
 ClientSampleId :



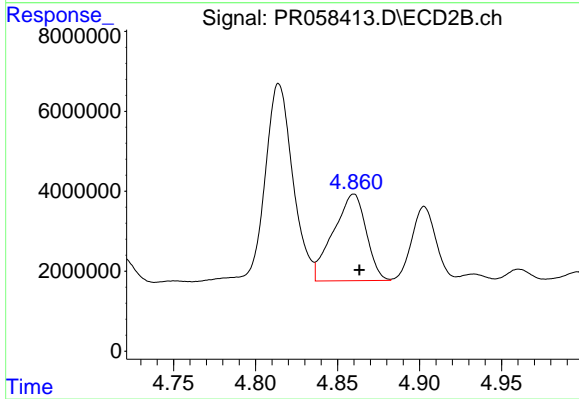
#25 AR-1248-5

R.T.: 4.903 min  
 Delta R.T.: -0.002 min  
 Response: 18768106  
 Conc: 155.79 ng/ml



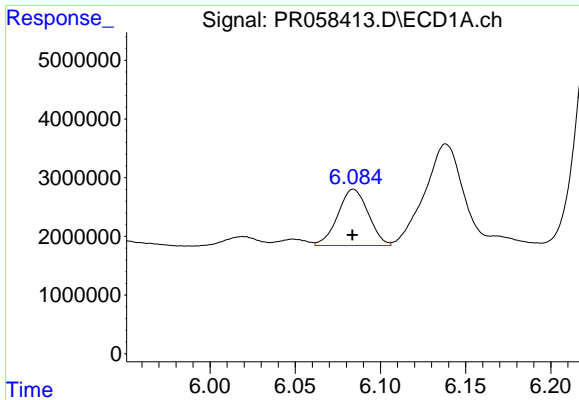
#26 AR-1254-1

R.T.: 5.844 min  
 Delta R.T.: 0.000 min  
 Response: 6359651  
 Conc: 71.46 ng/ml



#26 AR-1254-1

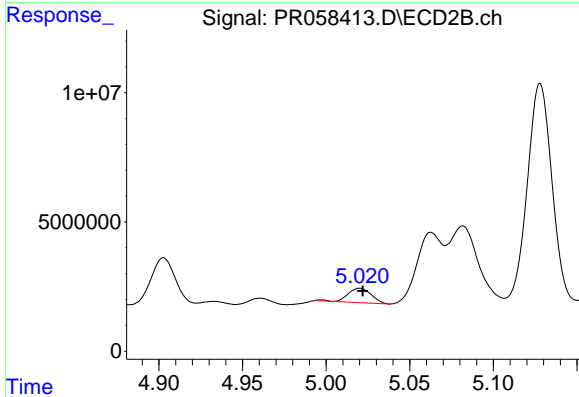
R.T.: 4.860 min  
 Delta R.T.: -0.003 min  
 Response: 30339502  
 Conc: 178.12 ng/ml



#27 AR-1254-2

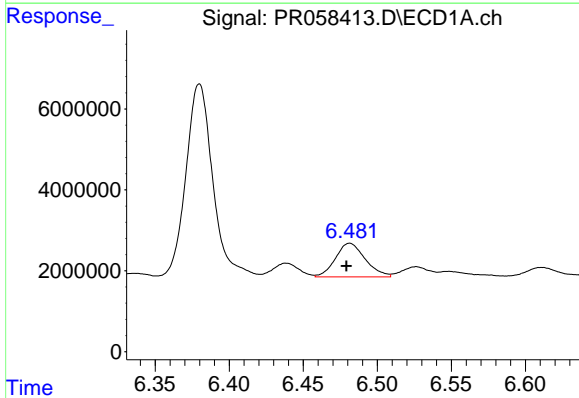
R.T.: 6.084 min  
 Delta R.T.: 0.000 min  
 Response: 11884954  
 Conc: 84.89 ng/ml

Instrument :  
 ECD\_R  
 ClientSampleId :



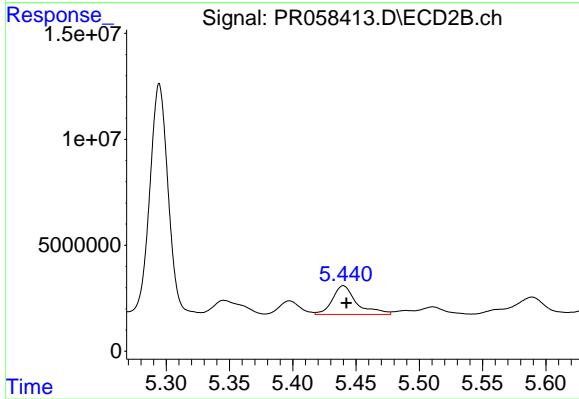
#27 AR-1254-2

R.T.: 5.020 min  
 Delta R.T.: -0.002 min  
 Response: 5436139  
 Conc: 37.04 ng/ml



#28 AR-1254-3

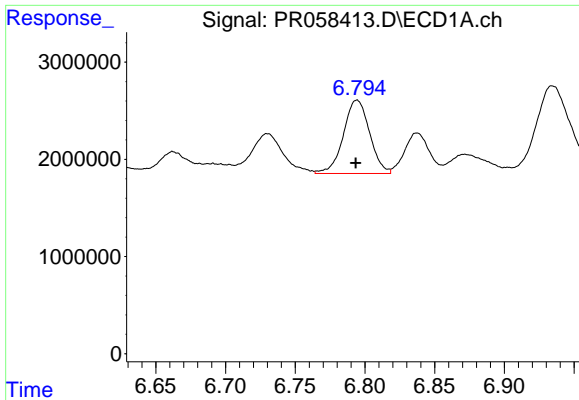
R.T.: 6.481 min  
 Delta R.T.: 0.002 min  
 Response: 11649550  
 Conc: 75.36 ng/ml



#28 AR-1254-3

R.T.: 5.440 min  
 Delta R.T.: -0.002 min  
 Response: 18194736  
 Conc: 74.39 ng/ml

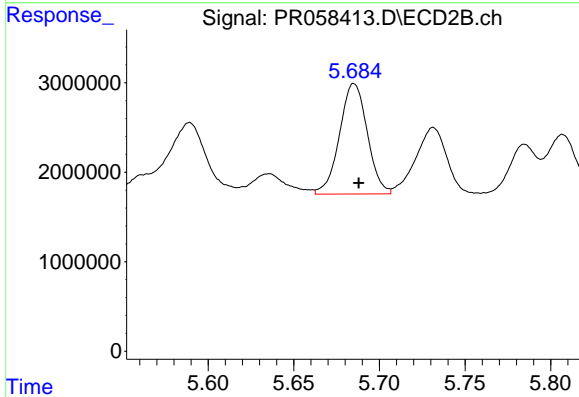




#29 AR-1254-4

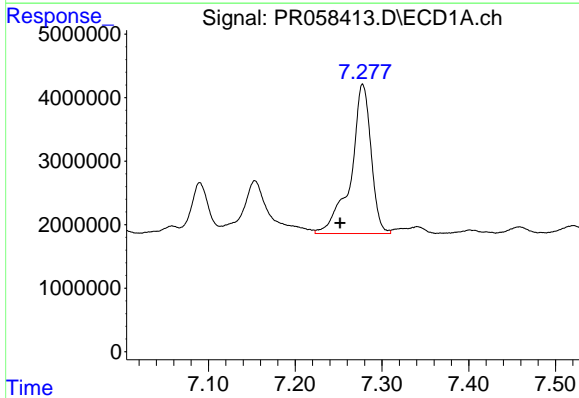
R.T.: 6.794 min  
 Delta R.T.: 0.000 min  
 Response: 9887307  
 Conc: 80.69 ng/ml

Instrument :  
 ECD\_R  
 ClientSampleId :



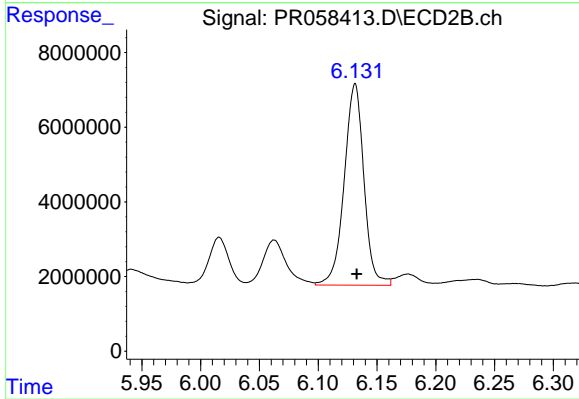
#29 AR-1254-4

R.T.: 5.685 min  
 Delta R.T.: -0.003 min  
 Response: 13920776  
 Conc: 88.09 ng/ml



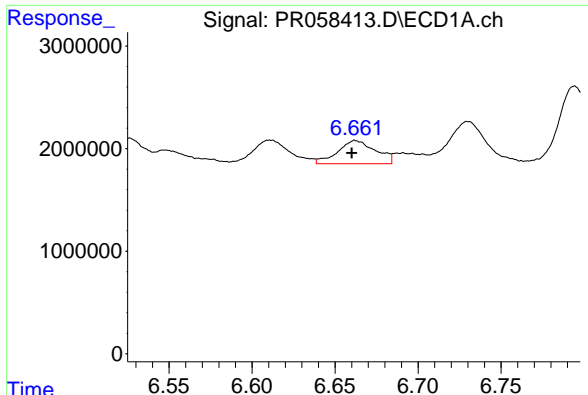
#30 AR-1254-5

R.T.: 7.278 min  
 Delta R.T.: 0.026 min  
 Response: 37838694  
 Conc: 283.42 ng/ml



#30 AR-1254-5

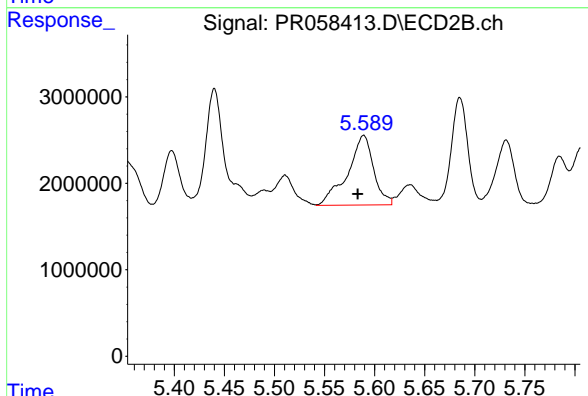
R.T.: 6.131 min  
 Delta R.T.: -0.001 min  
 Response: 62945885  
 Conc: 283.29 ng/ml



#31 AR-1260-1

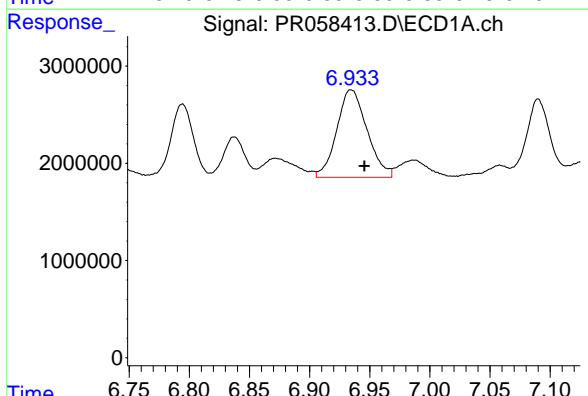
R.T.: 6.662 min  
 Delta R.T.: 0.002 min  
 Response: 3607424  
 Conc: 30.23 ng/ml

Instrument :  
 ECD\_R  
 ClientSampleId :



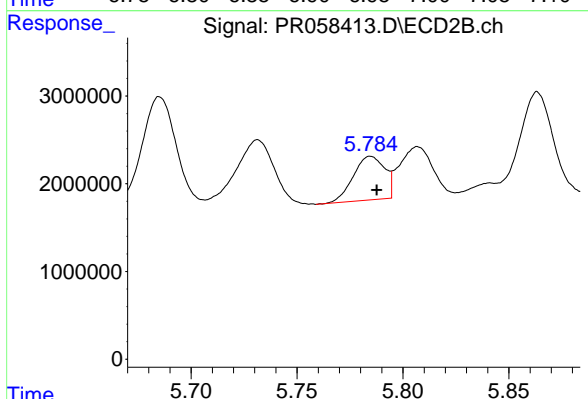
#31 AR-1260-1

R.T.: 5.589 min  
 Delta R.T.: 0.006 min  
 Response: 14573838  
 Conc: 89.76 ng/ml



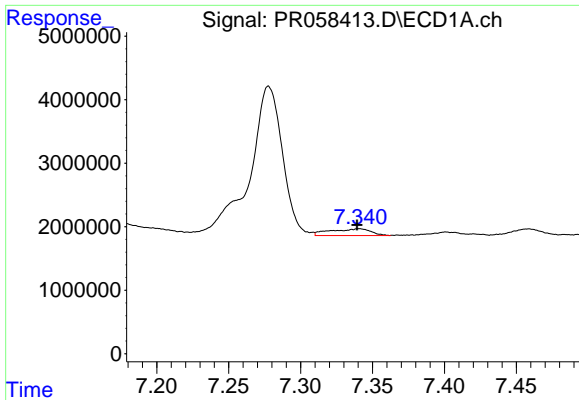
#32 AR-1260-2

R.T.: 6.935 min  
 Delta R.T.: -0.011 min  
 Response: 15775054  
 Conc: 106.78 ng/ml



#32 AR-1260-2

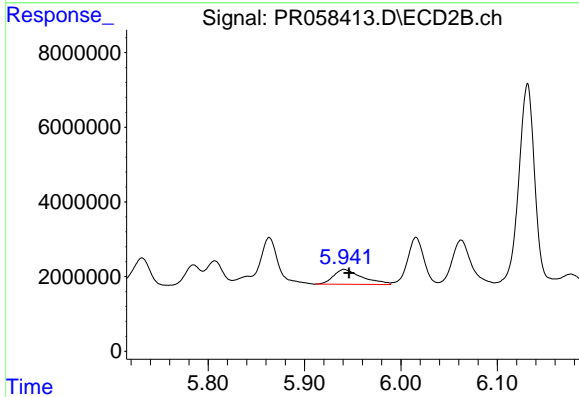
R.T.: 5.785 min  
 Delta R.T.: -0.003 min  
 Response: 5097194  
 Conc: 25.57 ng/ml



#33 AR-1260-3

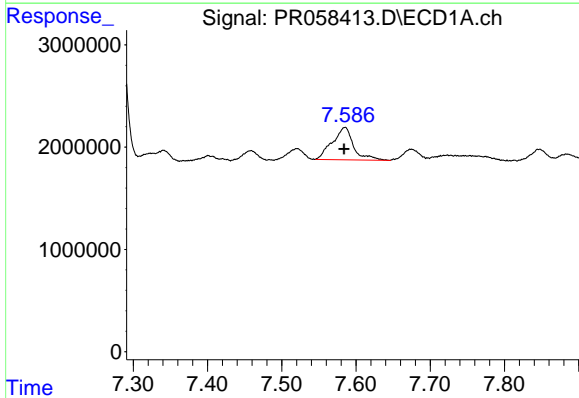
R.T.: 7.341 min  
 Delta R.T.: 0.001 min  
 Response: 2097609  
 Conc: 19.09 ng/ml

Instrument :  
 ECD\_R  
 ClientSampleId :



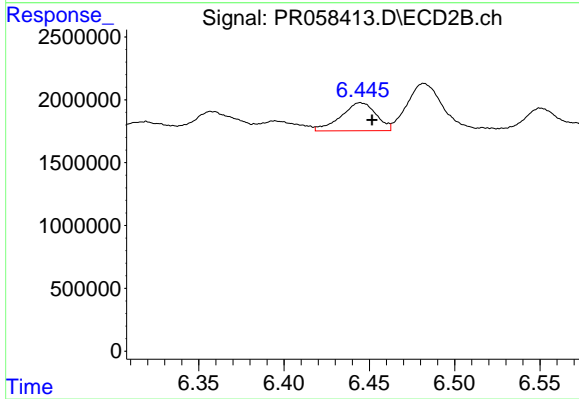
#33 AR-1260-3

R.T.: 5.941 min  
 Delta R.T.: -0.005 min  
 Response: 8219646  
 Conc: 42.25 ng/ml



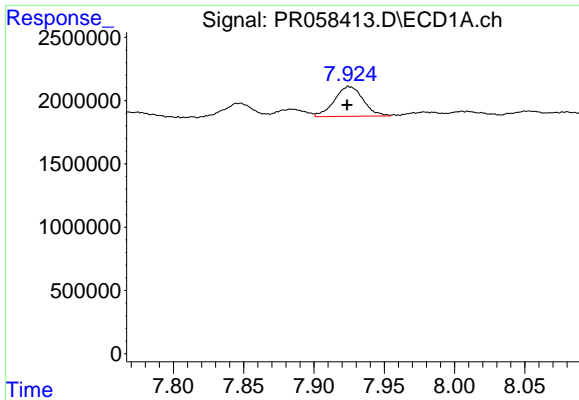
#34 AR-1260-4

R.T.: 7.585 min  
 Delta R.T.: 0.001 min  
 Response: 6310676  
 Conc: 49.38 ng/ml



#34 AR-1260-4

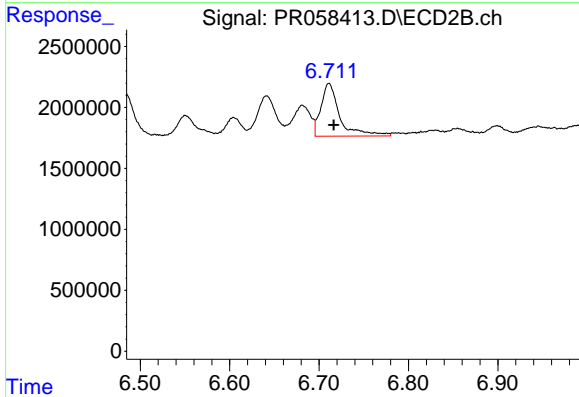
R.T.: 6.445 min  
 Delta R.T.: -0.007 min  
 Response: 3201540  
 Conc: 20.21 ng/ml



#35 AR-1260-5

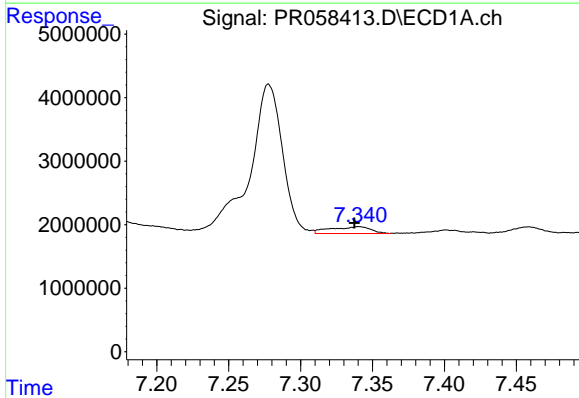
R.T.: 7.925 min  
 Delta R.T.: 0.001 min  
 Response: 3358195  
 Conc: 13.51 ng/ml

Instrument :  
 ECD\_R  
 ClientSampleId :



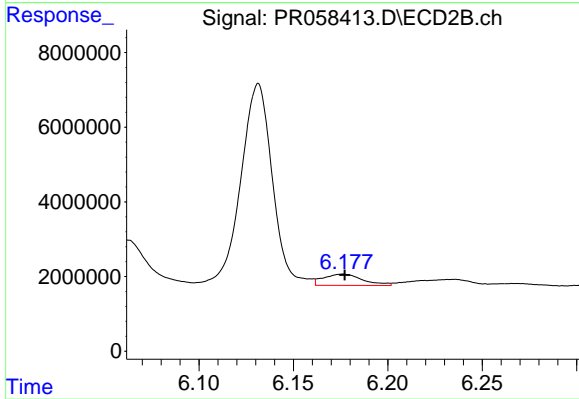
#35 AR-1260-5

R.T.: 6.711 min  
 Delta R.T.: -0.005 min  
 Response: 6341045  
 Conc: 16.72 ng/ml



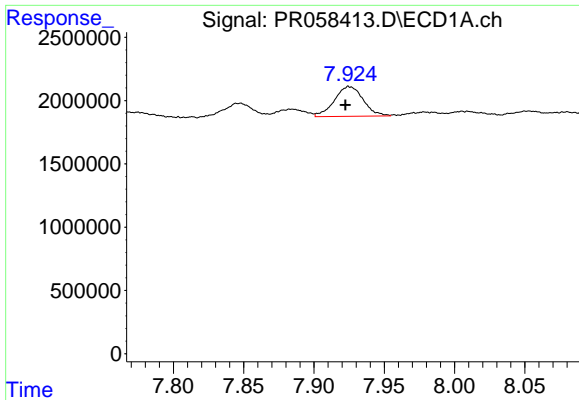
#36 AR-1262-1

R.T.: 7.341 min  
 Delta R.T.: 0.003 min  
 Response: 2097609  
 Conc: 13.01 ng/ml



#36 AR-1262-1

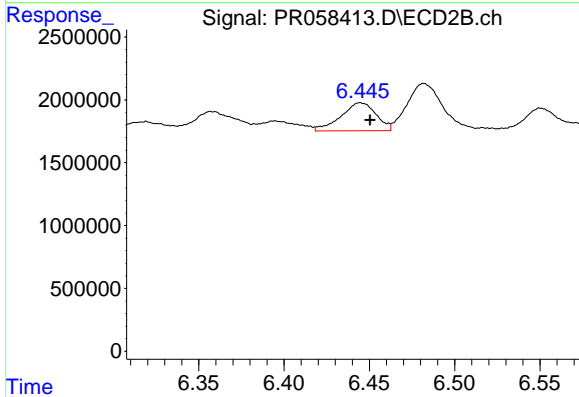
R.T.: 6.176 min  
 Delta R.T.: 0.000 min  
 Response: 4370416  
 Conc: 18.64 ng/ml



#37 AR-1262-2

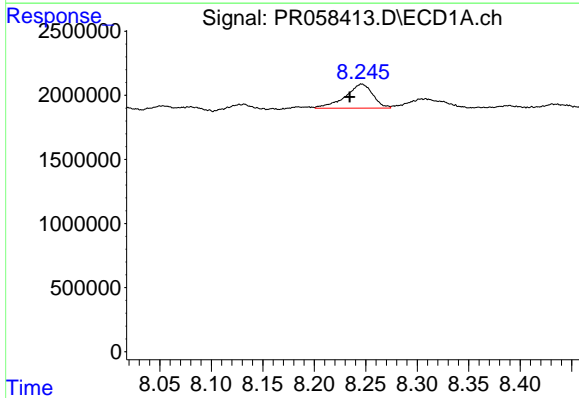
R.T.: 7.925 min  
 Delta R.T.: 0.003 min  
 Response: 3358195  
 Conc: 11.56 ng/ml

Instrument :  
 ECD\_R  
 ClientSampleId :



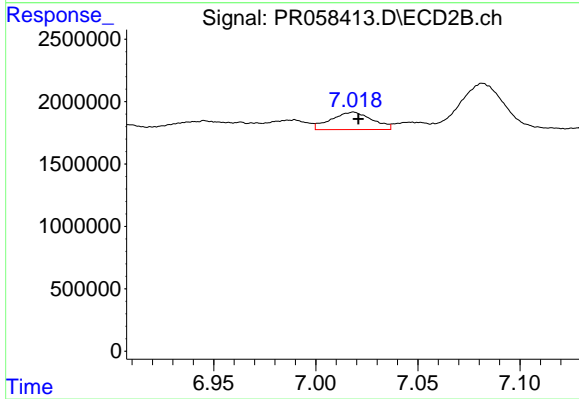
#37 AR-1262-2

R.T.: 6.445 min  
 Delta R.T.: -0.006 min  
 Response: 3201540  
 Conc: 14.96 ng/ml



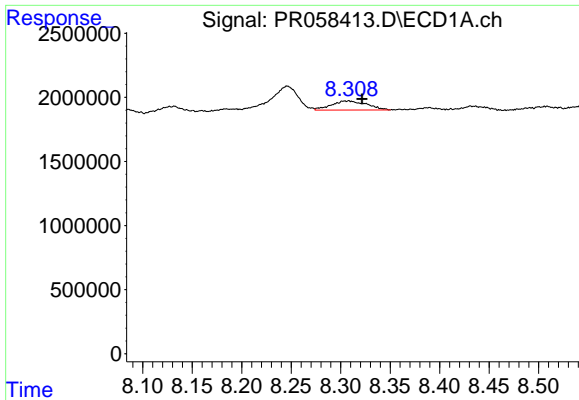
#38 AR-1262-3

R.T.: 8.246 min  
 Delta R.T.: 0.012 min  
 Response: 3509239  
 Conc: 17.44 ng/ml



#38 AR-1262-3

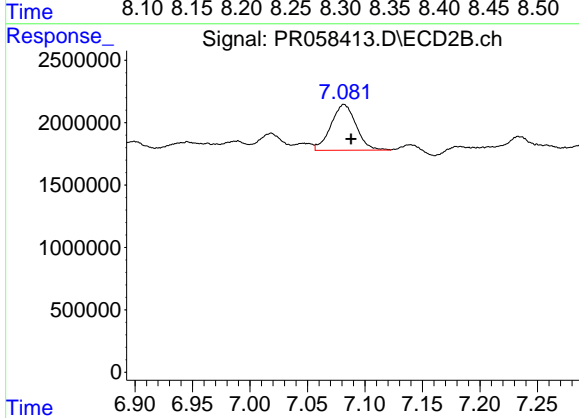
R.T.: 7.018 min  
 Delta R.T.: -0.002 min  
 Response: 1959422  
 Conc: 11.48 ng/ml



#39 AR-1262-4

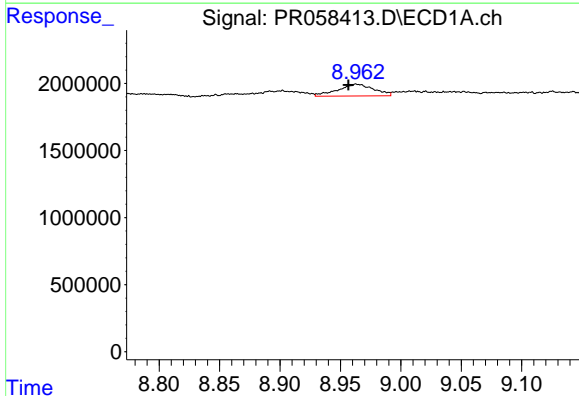
R.T.: 8.308 min  
 Delta R.T.: -0.014 min  
 Response: 1764824  
 Conc: 11.57 ng/ml

Instrument :  
 ECD\_R  
 ClientSampleId :



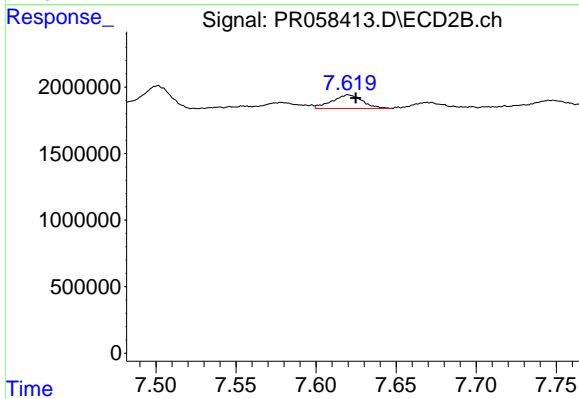
#39 AR-1262-4

R.T.: 7.082 min  
 Delta R.T.: -0.006 min  
 Response: 5605034  
 Conc: 17.09 ng/ml



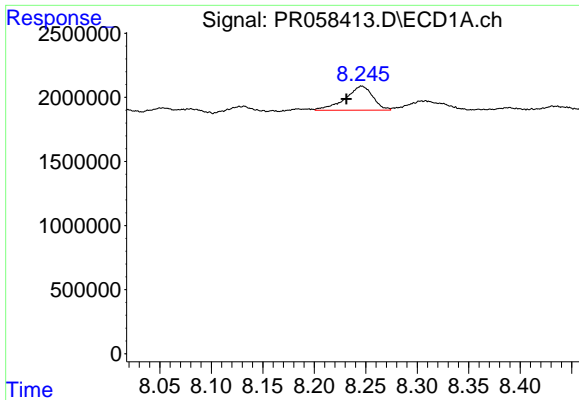
#40 AR-1262-5

R.T.: 8.963 min  
 Delta R.T.: 0.007 min  
 Response: 1827585  
 Conc: 16.27 ng/ml



#40 AR-1262-5

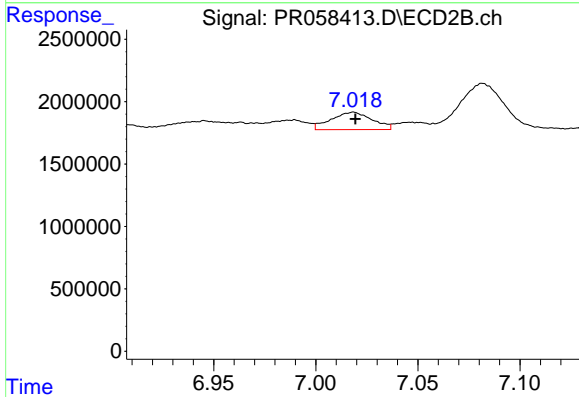
R.T.: 7.620 min  
 Delta R.T.: -0.005 min  
 Response: 1352671  
 Conc: 8.76 ng/ml



#41 AR-1268-1

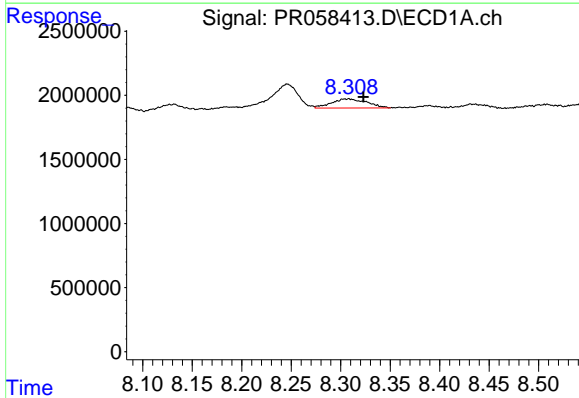
R.T.: 8.246 min  
 Delta R.T.: 0.015 min  
 Response: 3509239  
 Conc: 10.51 ng/ml

Instrument :  
 ECD\_R  
 ClientSampleId :



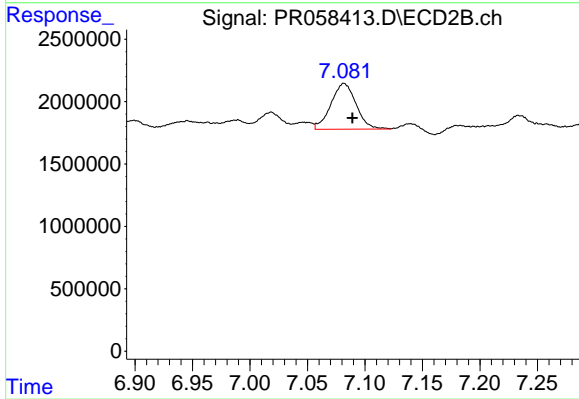
#41 AR-1268-1

R.T.: 7.018 min  
 Delta R.T.: -0.001 min  
 Response: 1959422  
 Conc: 3.91 ng/ml



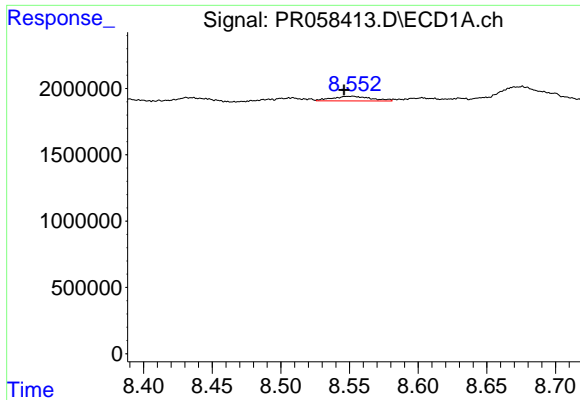
#42 AR-1268-2

R.T.: 8.308 min  
 Delta R.T.: -0.015 min  
 Response: 1764824  
 Conc: 5.82 ng/ml



#42 AR-1268-2

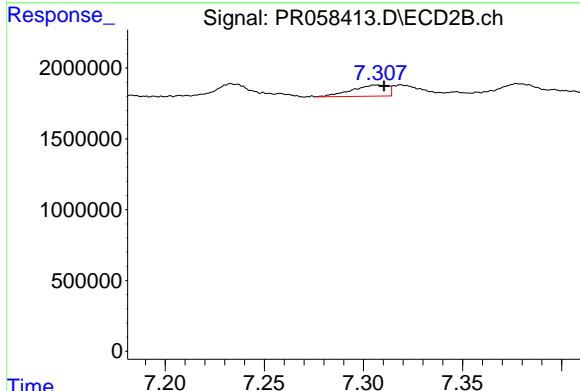
R.T.: 7.082 min  
 Delta R.T.: -0.007 min  
 Response: 5605034  
 Conc: 12.28 ng/ml



#43 AR-1268-3

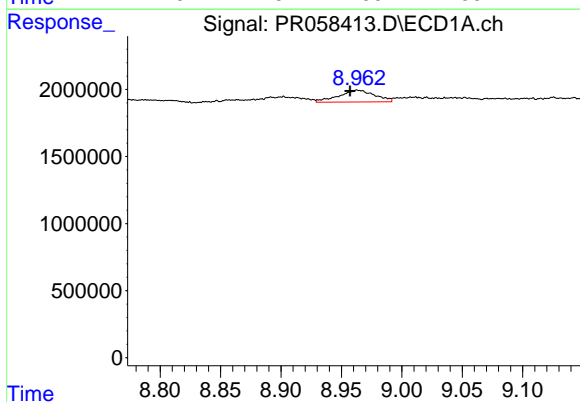
R.T.: 8.552 min  
 Delta R.T.: 0.006 min  
 Response: 702255  
 Conc: 2.72 ng/ml

Instrument :  
 ECD\_R  
 ClientSampleId :



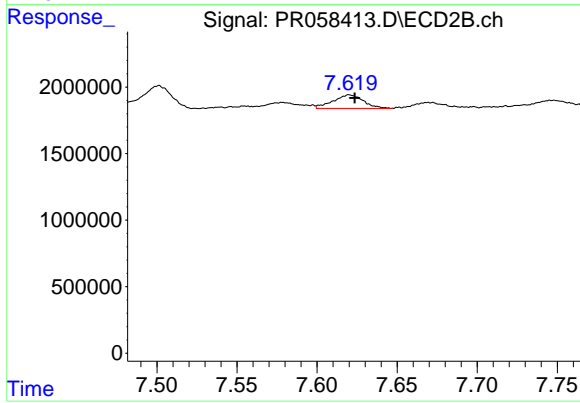
#43 AR-1268-3

R.T.: 7.307 min  
 Delta R.T.: -0.004 min  
 Response: 1004858  
 Conc: 2.61 ng/ml



#44 AR-1268-4

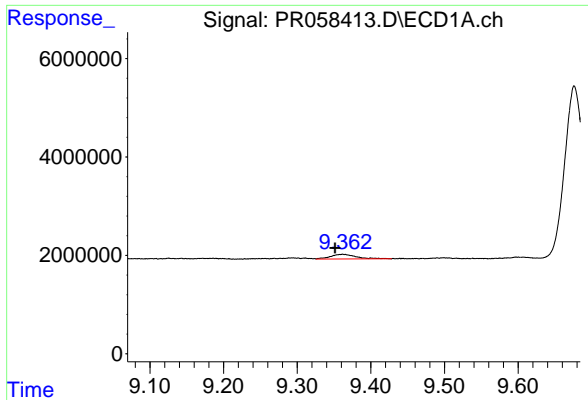
R.T.: 8.963 min  
 Delta R.T.: 0.006 min  
 Response: 1827585  
 Conc: 15.14 ng/ml



#44 AR-1268-4

R.T.: 7.620 min  
 Delta R.T.: -0.003 min  
 Response: 1352671  
 Conc: 8.16 ng/ml

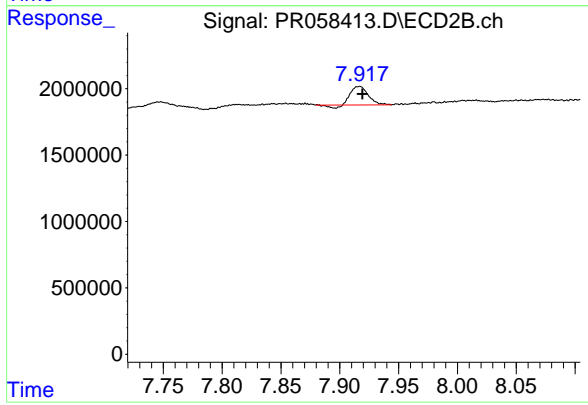




#45 AR-1268-5

R.T.: 9.362 min  
Delta R.T.: 0.010 min  
Response: 2278226  
Conc: 2.67 ng/ml

Instrument :  
ECD\_R  
ClientSampleId :



#45 AR-1268-5

R.T.: 7.917 min  
Delta R.T.: -0.003 min  
Response: 1345438  
Conc: 1.05 ng/ml