

Data Path : Z:\pestpcbsrv\HPCHEM1\ECD_R\Data\PR120121\
 Data File : PR052795.D
 Signal(s) : Signal #1: ECD1A.ch Signal #2: ECD2B.ch
 Acq On : 01 Dec 2021 08:40
 Operator : AJ\MA
 Sample : HEXANE
 Misc :
 ALS Vial : 1 Sample Multiplier: 1

Instrument :
 ECD_R
 ClientSampleId :

Integration File signal 1: autoint1.e
 Integration File signal 2: autoint2.e
 Quant Time: Dec 01 21:43:11 2021
 Quant Method : Z:\pestpcbsrv\HPCHEM1\ECD_R\Method\PR110921CLP.M
 Quant Title : GC EXTRACTABLES
 QLast Update : Wed Nov 10 04:57:17 2021
 Response via : Initial Calibration
 Integrator: ChemStation

Volume Inj. : 1 µl
 Signal #1 Phase : ZB MR1 Signal #2 Phase: ZB MR2
 Signal #1 Info : 30Mx0.32mmx 0.5µm Signal #2 Info : 30M x 0.32mm x 0.25µm

Compound	RT#1	RT#2	Resp#1	Resp#2	ng/ml	ng/ml
System Monitoring Compounds						
1) SA Tetrachlo...	4.688	0.000	15521	0	0.004	N.D. #
Target Compounds						
3) L1 AR-1016-1	5.881	0.000	83411	0	0.702	N.D. #
4) L1 AR-1016-2	5.901	0.000	70508	0	0.423	N.D. #
7) L1 AR-1016-5	6.373	0.000	514310	0	5.905	N.D. #
8) L2 AR-1221-1	4.908	0.000	27607	0	0.641	N.D. #
9) L2 AR-1221-2	4.995	0.000	220633	0	7.118	N.D. #
10) L2 AR-1221-3	5.083	0.000	73564	0	0.743	N.D. #
11) L3 AR-1232-1	5.083	0.000	73564	0	0.958	N.D. #
12) L3 AR-1232-2	5.620	0.000	190887	0	4.883	N.D. #
15) L3 AR-1232-5	6.146	0.000	51520	0	1.737	N.D. #
16) L4 AR-1242-1	5.881	0.000	83411	0	0.853	N.D. #
17) L4 AR-1242-2	5.901	0.000	70508	0	0.516	N.D. #
20) L4 AR-1242-5	6.794	5.752	2093209	1313146	27.458	17.487 #
21) L5 AR-1248-1	5.881	0.000	83411	0	1.150	N.D. #
23) L5 AR-1248-3	6.373	5.181	514310	-223345	4.412	N.D. #
24) L5 AR-1248-4	6.756	0.000	8496836	0	65.160	N.D. #
25) L5 AR-1248-5	6.794	5.752	2093209	1313146	16.724	12.752
26) L6 AR-1254-1	6.722	5.752	5812276	1313146	43.882	8.488 #
27) L6 AR-1254-2	6.971	0.000	1841701	0	8.997	N.D. #
28) L6 AR-1254-3	7.283f	6.257	6160185	2296842	29.002	10.159 #
29) L6 AR-1254-4	7.587	6.573f	7078844	555460	43.853	4.006 #
30) L6 AR-1254-5	0.000	6.991f	0	781681	N.D.	3.735 #
31) L7 AR-1260-1	7.473	0.000	4187407	0	28.438	N.D. #
32) L7 AR-1260-2	7.711	6.573	4817025	555460	27.099	3.320 #
33) L7 AR-1260-3	8.124	6.723	8998837	473756	64.709	2.854 #
34) L7 AR-1260-4	8.342	0.000	4336022	0	26.608	N.D. #
35) L7 AR-1260-5	8.701	7.459	895415	317202	2.805	0.867 #
36) L8 AR-1262-1	8.124	0.000	8998837	0	34.656	N.D. #
37) L8 AR-1262-2	8.701	7.459	895415	317202	1.874	0.617 #
38) L8 AR-1262-3	9.069f	7.676f	443725	749815	2.087	3.632 #
39) L8 AR-1262-4	9.069f	7.849f	443725	930687	3.555	2.381 #
40) L8 AR-1262-5	9.845	0.000	1116360	0	6.060	N.D. #
41) L9 AR-1268-1	9.069f	7.676f	443725	749815	1.006	1.632 #
42) L9 AR-1268-2	9.069f	7.849f	443725	930687	1.100	2.166 #
43) L9 AR-1268-3	0.000	8.004	0	833022	N.D.	2.266 #
44) L9 AR-1268-4	9.845	0.000	1116360	0	7.046	N.D. #
45) L9 AR-1268-5	10.257	0.000	674022	0	0.593	N.D. #

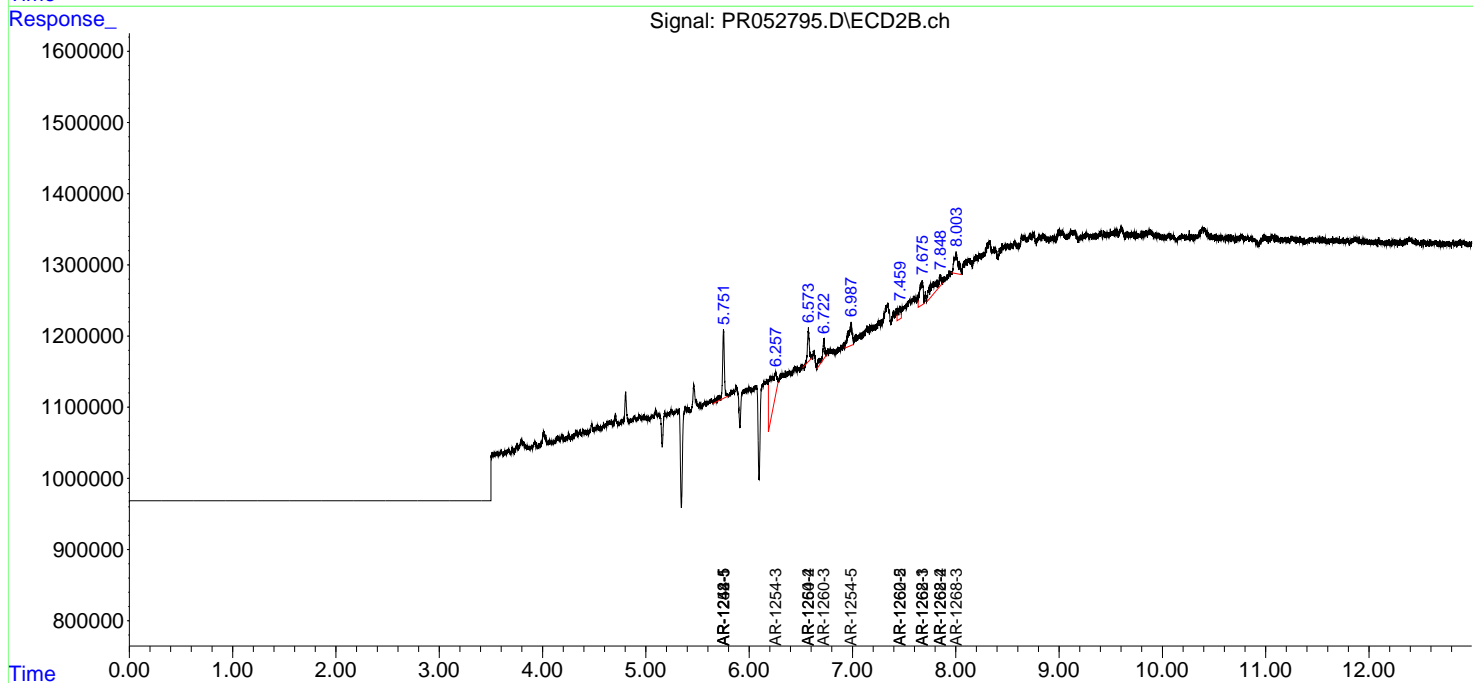
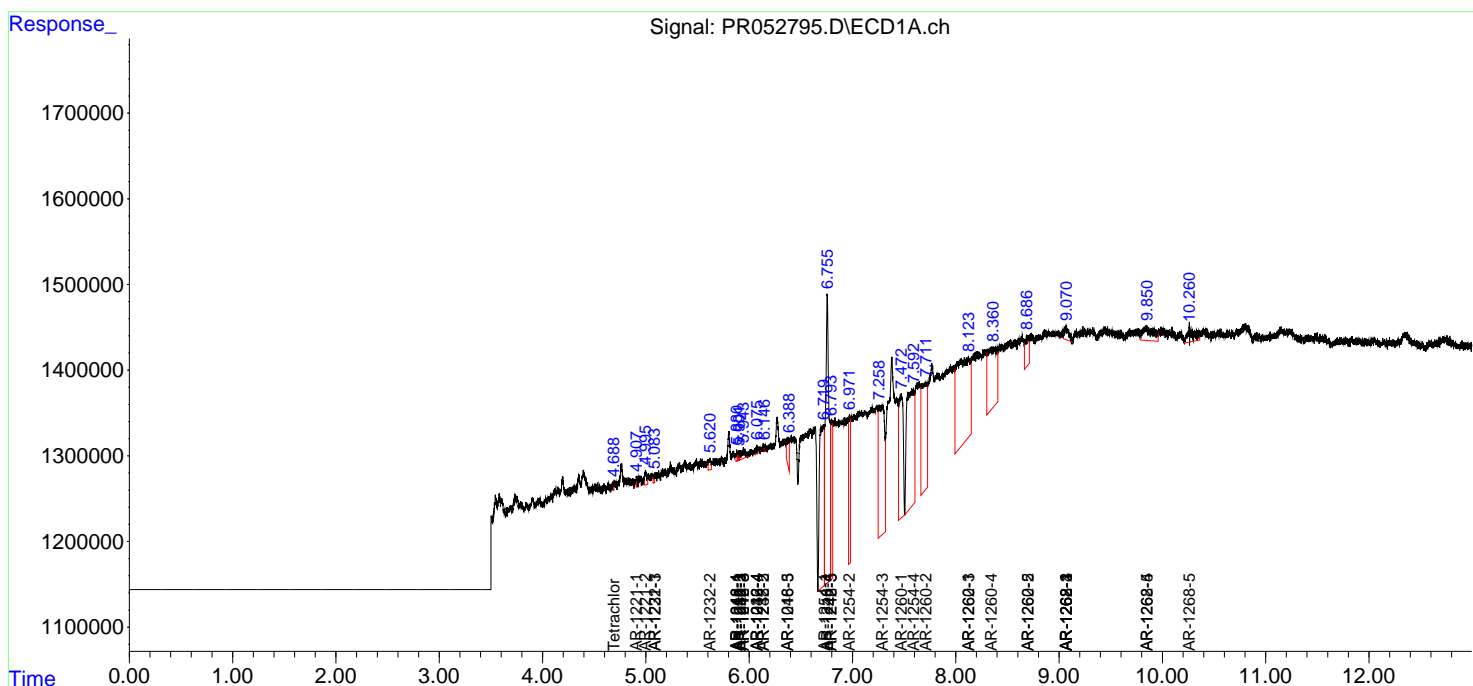
(f)=RT Delta > 1/2 Window (#)=Amounts differ by > 25% (m)=manual int.

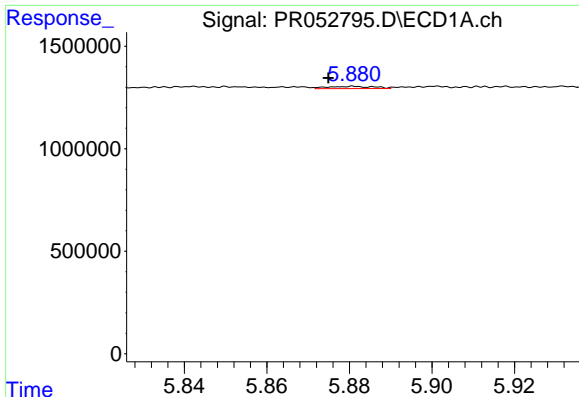
Data Path : Z:\pestpcbsrv\HPCHEM1\ECD_R\Data\PR120121\
 Data File : PR052795.D
 Signal(s) : Signal #1: ECD1A.ch Signal #2: ECD2B.ch
 Acq On : 01 Dec 2021 08:40
 Operator : AJ\MA
 Sample : HEXANE
 Misc :
 ALS Vial : 1 Sample Multiplier: 1

Instrument :
 ECD_R
 ClientSampleId :

Integration File signal 1: autoint1.e
 Integration File signal 2: autoint2.e
 Quant Time: Dec 01 21:43:11 2021
 Quant Method : Z:\pestpcbsrv\HPCHEM1\ECD_R\Method\PR110921CLP.M
 Quant Title : GC EXTRACTABLES
 QLast Update : Wed Nov 10 04:57:17 2021
 Response via : Initial Calibration
 Integrator: ChemStation

Volume Inj. : 1 µl
 Signal #1 Phase : ZB MR1 Signal #2 Phase: ZB MR2
 Signal #1 Info : 30Mx0.32mmx 0.5µm Signal #2 Info : 30M x 0.32mm x 0.25µm

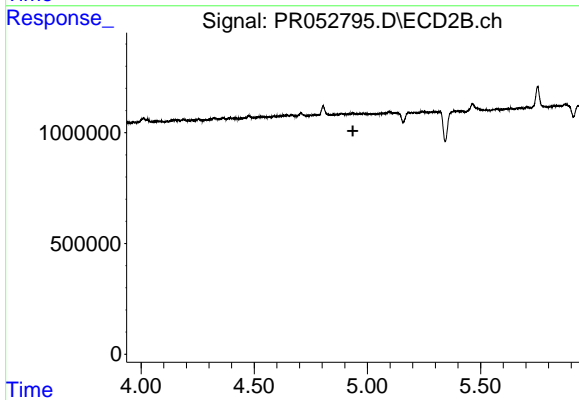




#3 AR-1016-1

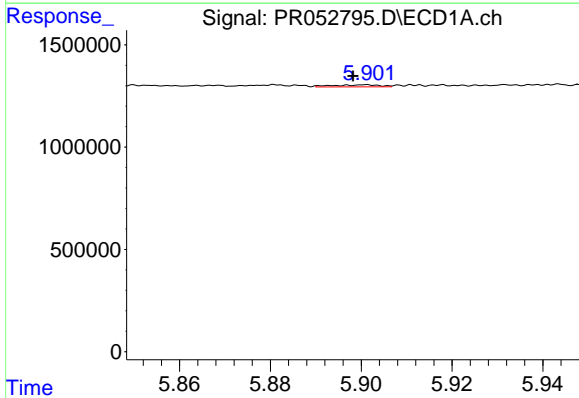
R.T.: 5.881 min
 Delta R.T.: 0.006 min
 Response: 83411
 Conc: 0.70 ng/ml

Instrument :
 ECD_R
 ClientSampleId :



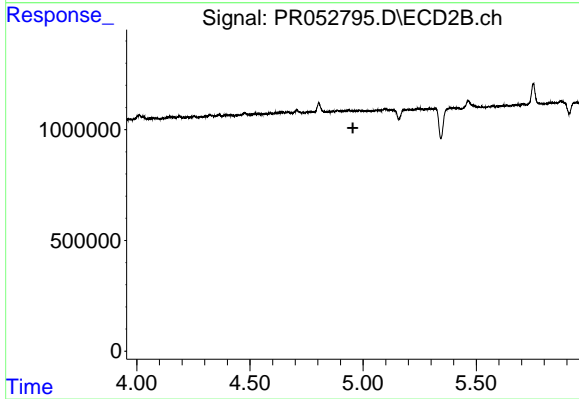
#3 AR-1016-1

R.T.: 0.000 min
 Exp R.T. : 4.936 min
 Response: 0
 Conc: N.D.



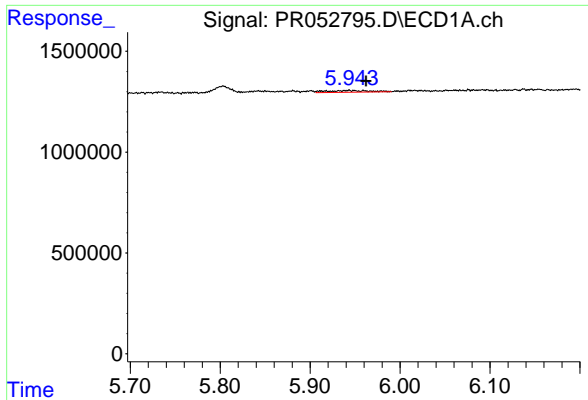
#4 AR-1016-2

R.T.: 5.901 min
 Delta R.T.: 0.003 min
 Response: 70508
 Conc: 0.42 ng/ml



#4 AR-1016-2

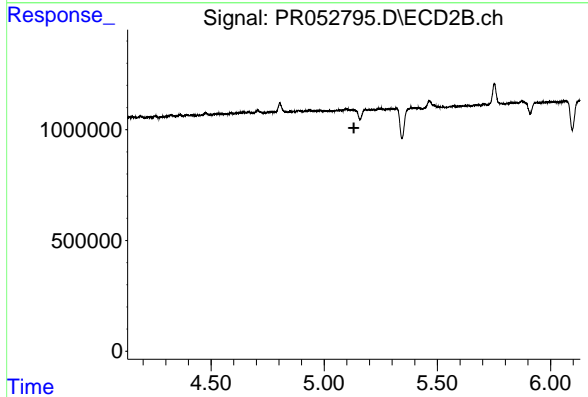
R.T.: 0.000 min
 Exp R.T. : 4.955 min
 Response: 0
 Conc: N.D.



#5 AR-1016-3

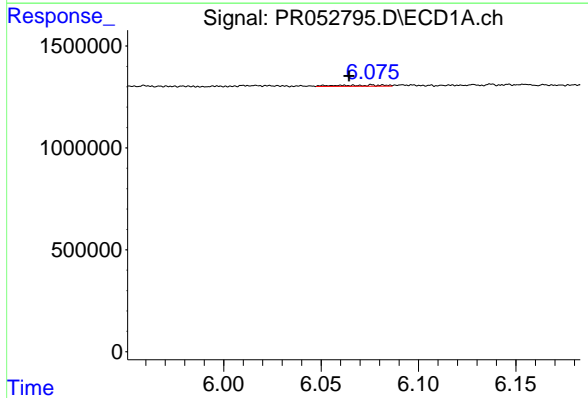
R.T.: 5.943 min
 Delta R.T.: -0.019 min
 Response: 278913
 Conc: 2.70 ng/ml

Instrument :
 ECD_R
 ClientSampleId :



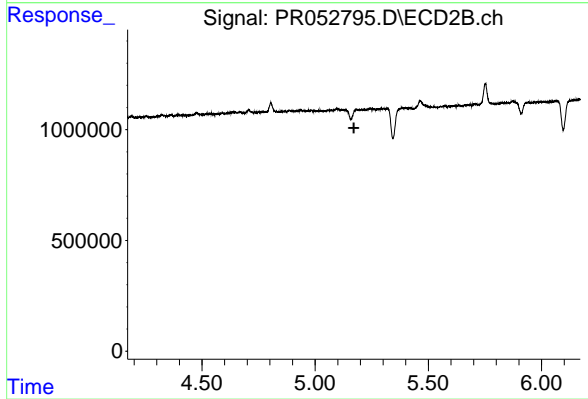
#5 AR-1016-3

R.T.: 5.181 min
 Delta R.T.: 0.050 min
 Response: -223345
 Conc: N.D.



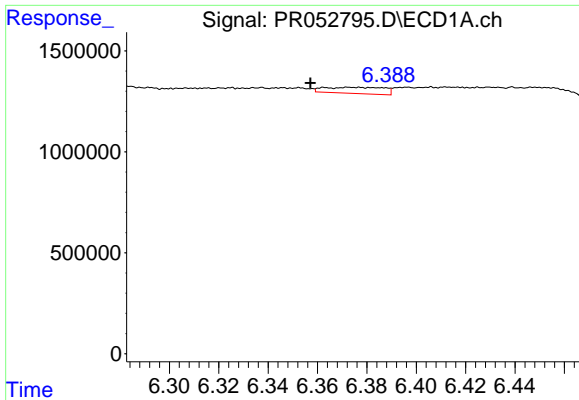
#6 AR-1016-4

R.T.: 6.067 min
 Delta R.T.: 0.003 min
 Response: 99348
 Conc: 1.18 ng/ml



#6 AR-1016-4

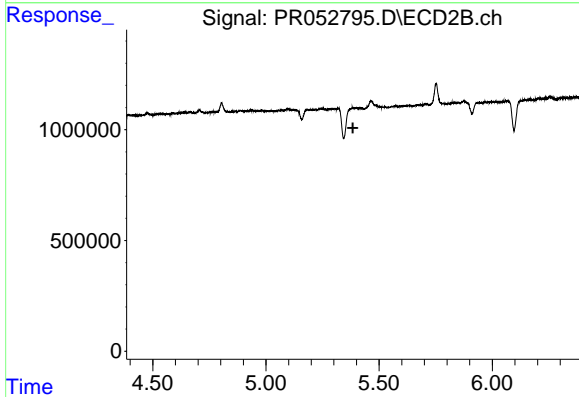
R.T.: 5.181 min
 Delta R.T.: 0.010 min
 Response: -223345
 Conc: N.D.



#7 AR-1016-5

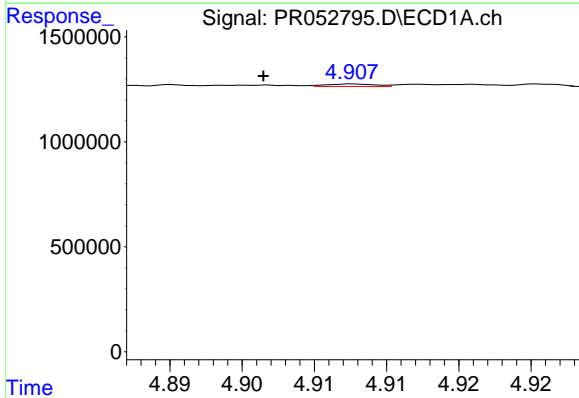
R.T.: 6.373 min
 Delta R.T.: 0.016 min
 Response: 514310
 Conc: 5.90 ng/ml

Instrument :
 ECD_R
 ClientSampleId :



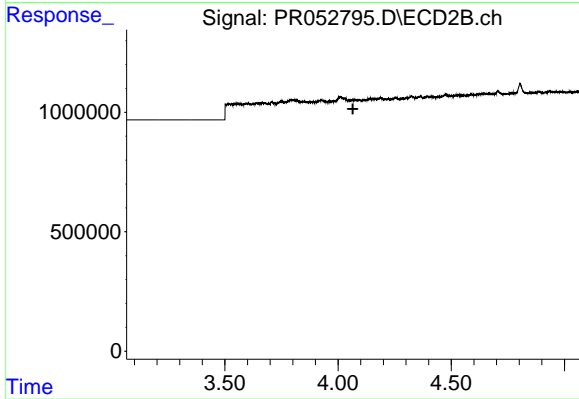
#7 AR-1016-5

R.T.: 0.000 min
 Exp R.T. : 5.384 min
 Response: 0
 Conc: N.D.



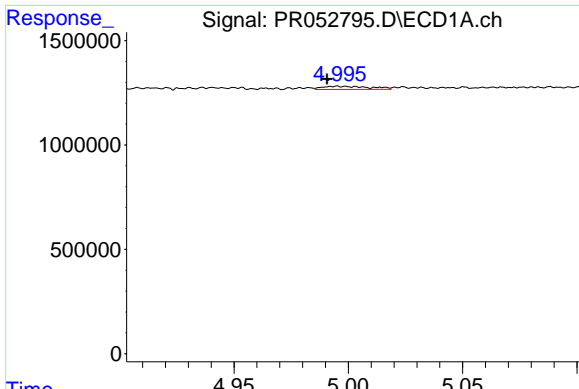
#8 AR-1221-1

R.T.: 4.908 min
 Delta R.T.: 0.006 min
 Response: 27607
 Conc: 0.64 ng/ml



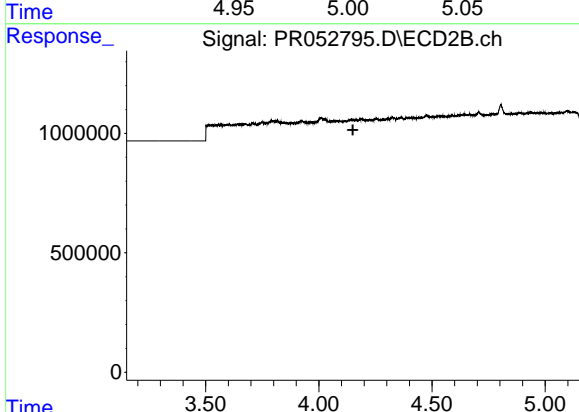
#8 AR-1221-1

R.T.: 0.000 min
 Exp R.T. : 4.065 min
 Response: 0
 Conc: N.D.

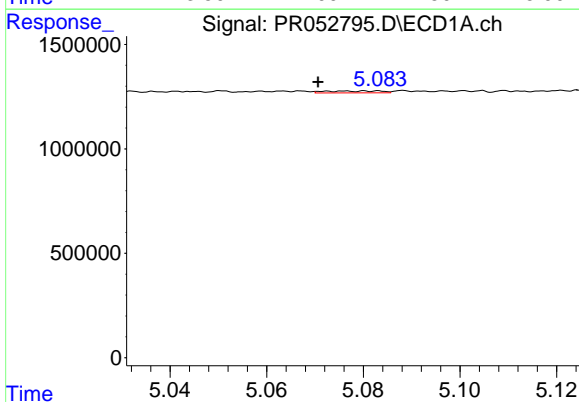


#9 AR-1221-2
 R.T.: 4.995 min
 Delta R.T.: 0.004 min
 Response: 220633
 Conc: 7.12 ng/ml

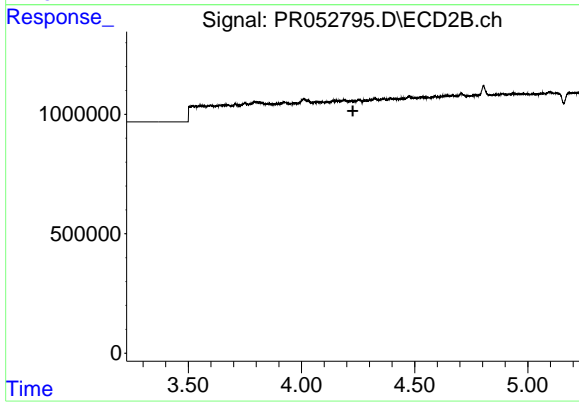
Instrument :
 ECD_R
 ClientSampleId :



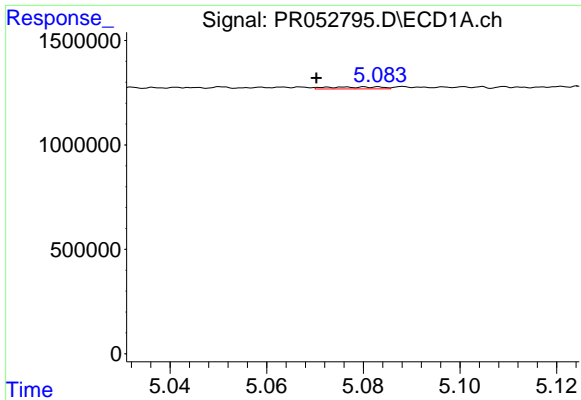
#9 AR-1221-2
 R.T.: 0.000 min
 Exp R.T. : 4.151 min
 Response: 0
 Conc: N.D.



#10 AR-1221-3
 R.T.: 5.083 min
 Delta R.T.: 0.013 min
 Response: 73564
 Conc: 0.74 ng/ml



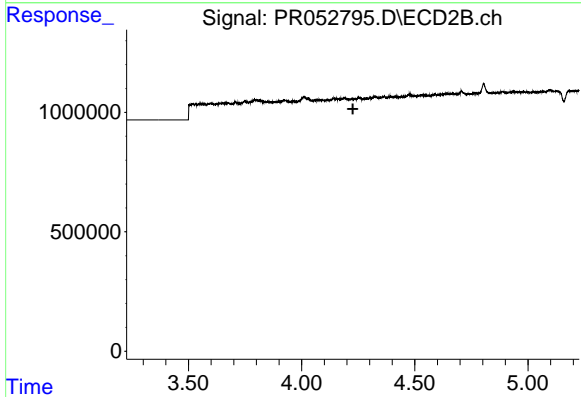
#10 AR-1221-3
 R.T.: 0.000 min
 Exp R.T. : 4.227 min
 Response: 0
 Conc: N.D.



#11 AR-1232-1

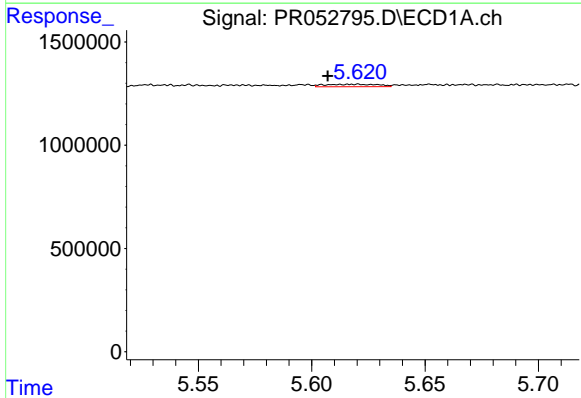
R.T.: 5.083 min
 Delta R.T.: 0.013 min
 Response: 73564
 Conc: 0.96 ng/ml

Instrument :
 ECD_R
 ClientSampleId :



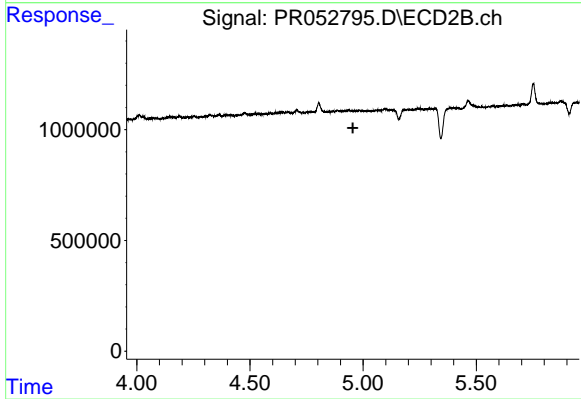
#11 AR-1232-1

R.T.: 0.000 min
 Exp R.T. : 4.227 min
 Response: 0
 Conc: N.D.



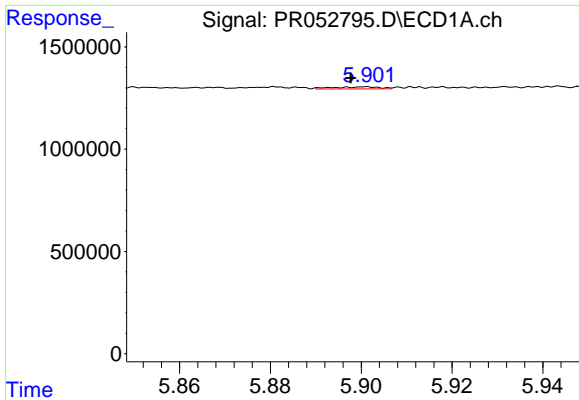
#12 AR-1232-2

R.T.: 5.620 min
 Delta R.T.: 0.013 min
 Response: 190887
 Conc: 4.88 ng/ml



#12 AR-1232-2

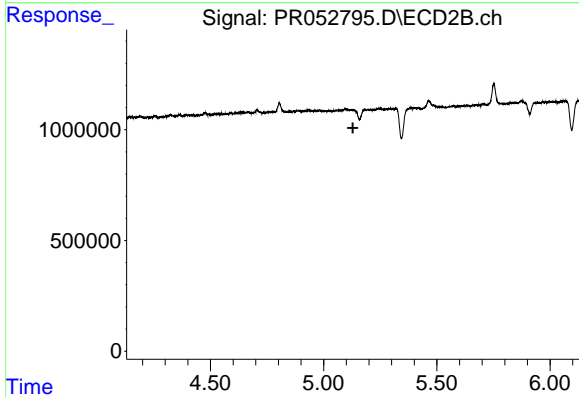
R.T.: 0.000 min
 Exp R.T. : 4.955 min
 Response: 0
 Conc: N.D.



#13 AR-1232-3

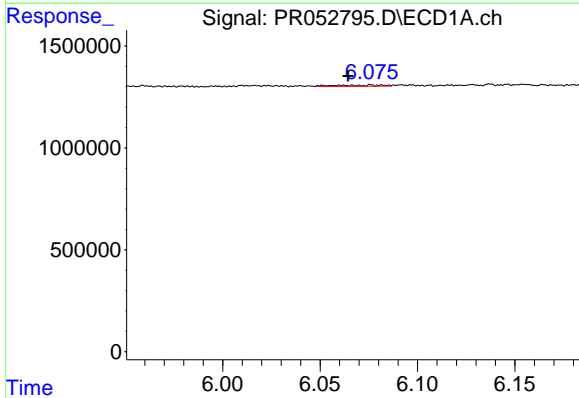
R.T.: 5.901 min
 Delta R.T.: 0.004 min
 Response: 70508
 Conc: 0.97 ng/ml

Instrument :
 ECD_R
 ClientSampleId :



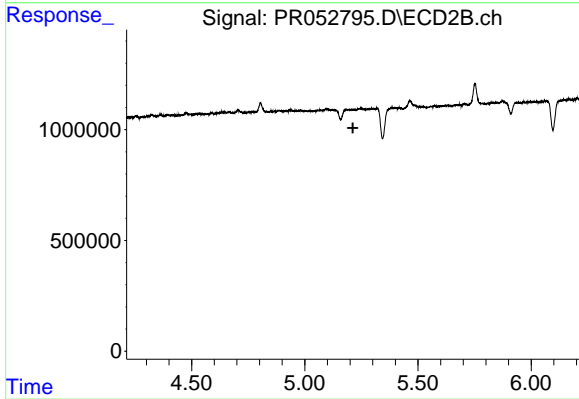
#13 AR-1232-3

R.T.: 5.181 min
 Delta R.T.: 0.052 min
 Response: -223345
 Conc: N.D.



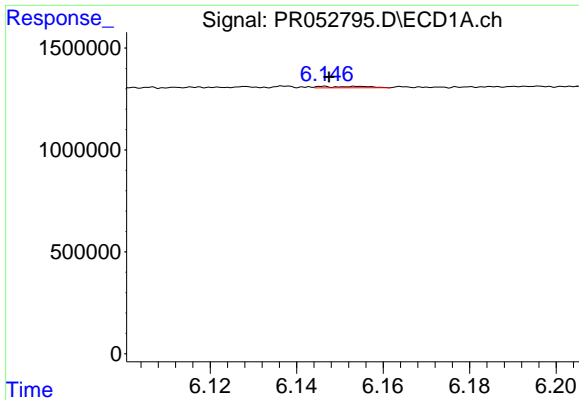
#14 AR-1232-4

R.T.: 6.067 min
 Delta R.T.: 0.002 min
 Response: 99348
 Conc: 2.75 ng/ml



#14 AR-1232-4

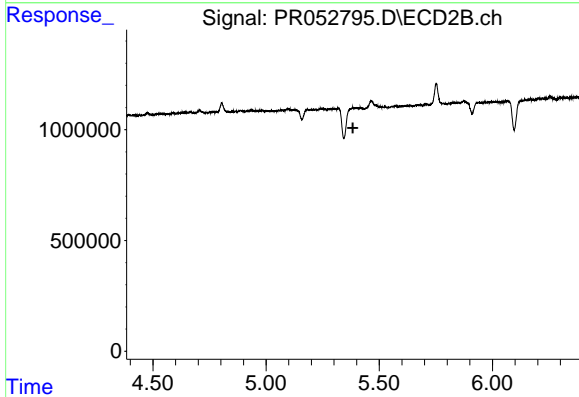
R.T.: 5.181 min
 Delta R.T.: -0.031 min
 Response: -223345
 Conc: N.D.



#15 AR-1232-5

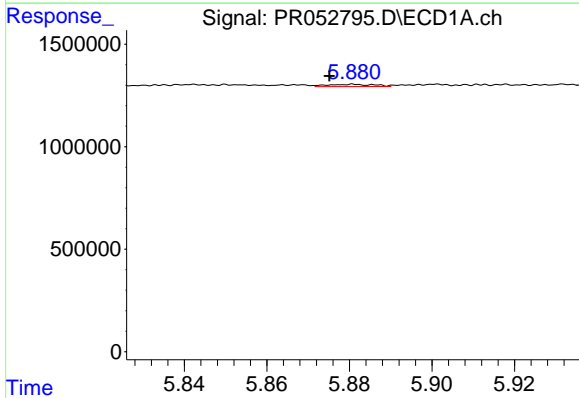
R.T.: 6.146 min
Delta R.T.: -0.001 min
Response: 51520
Conc: 1.74 ng/ml

Instrument :
ECD_R
ClientSampleId :



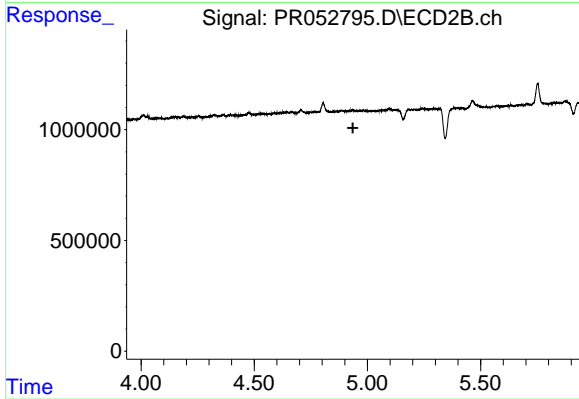
#15 AR-1232-5

R.T.: 0.000 min
Exp R.T. : 5.383 min
Response: 0
Conc: N.D.



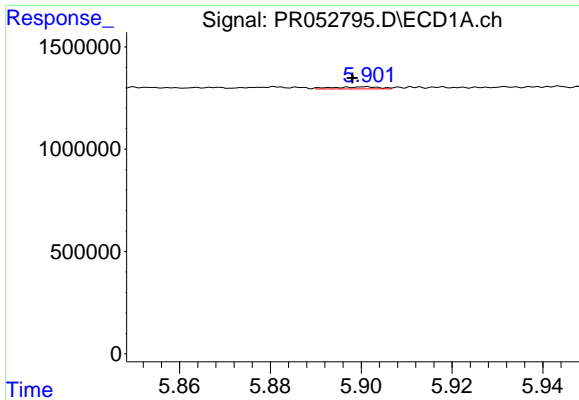
#16 AR-1242-1

R.T.: 5.881 min
Delta R.T.: 0.006 min
Response: 83411
Conc: 0.85 ng/ml



#16 AR-1242-1

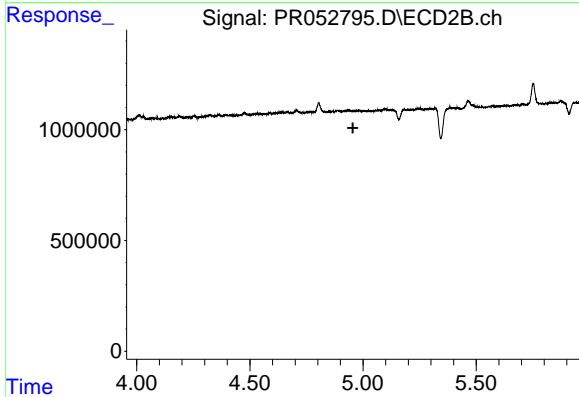
R.T.: 0.000 min
Exp R.T. : 4.936 min
Response: 0
Conc: N.D.



#17 AR-1242-2

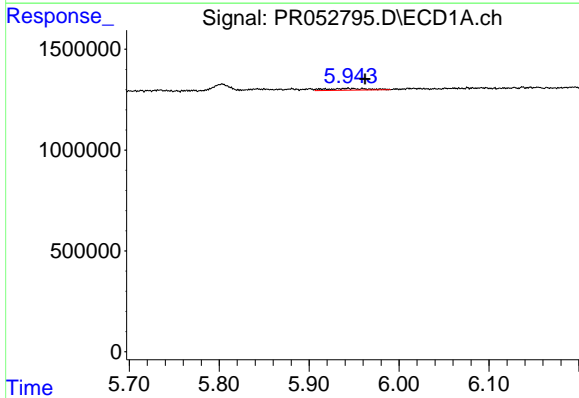
R.T.: 5.901 min
 Delta R.T.: 0.003 min
 Response: 70508
 Conc: 0.52 ng/ml

Instrument :
 ECD_R
 ClientSampleId :



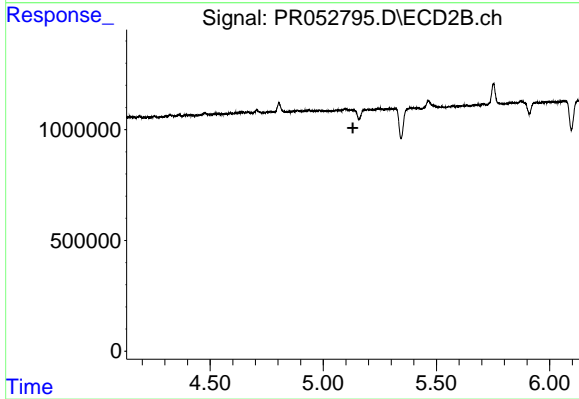
#17 AR-1242-2

R.T.: 0.000 min
 Exp R.T. : 4.955 min
 Response: 0
 Conc: N.D.



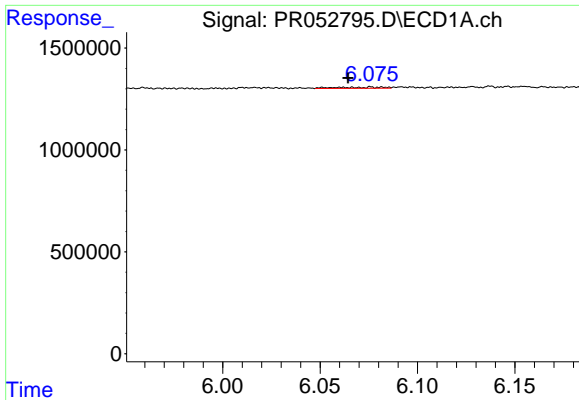
#18 AR-1242-3

R.T.: 5.943 min
 Delta R.T.: -0.019 min
 Response: 278913
 Conc: 3.25 ng/ml



#18 AR-1242-3

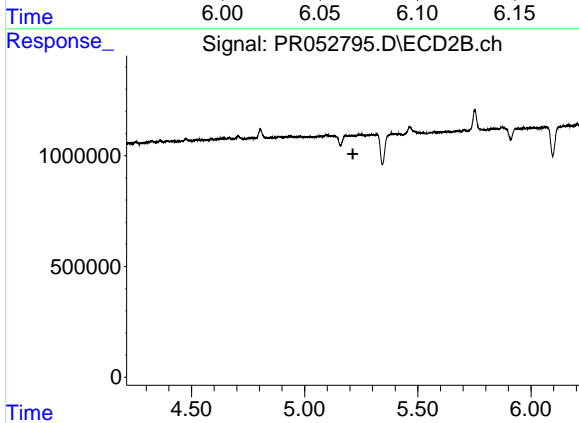
R.T.: 5.181 min
 Delta R.T.: 0.051 min
 Response: -223345
 Conc: N.D.



#19 AR-1242-4

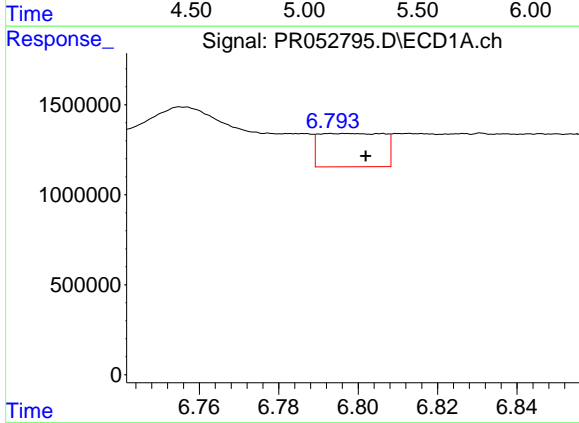
R.T.: 6.067 min
 Delta R.T.: 0.003 min
 Response: 99348
 Conc: 1.43 ng/ml

Instrument :
 ECD_R
 ClientSampleId :



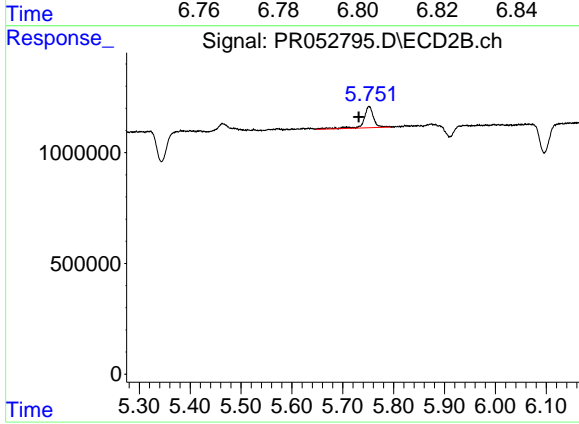
#19 AR-1242-4

R.T.: 5.181 min
 Delta R.T.: -0.032 min
 Response: -223345
 Conc: N.D.



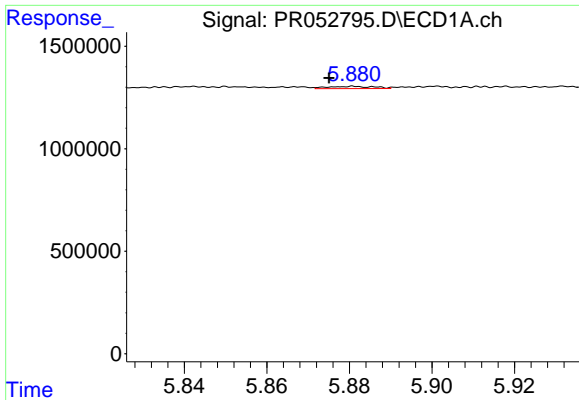
#20 AR-1242-5

R.T.: 6.794 min
 Delta R.T.: -0.008 min
 Response: 2093209
 Conc: 27.46 ng/ml



#20 AR-1242-5

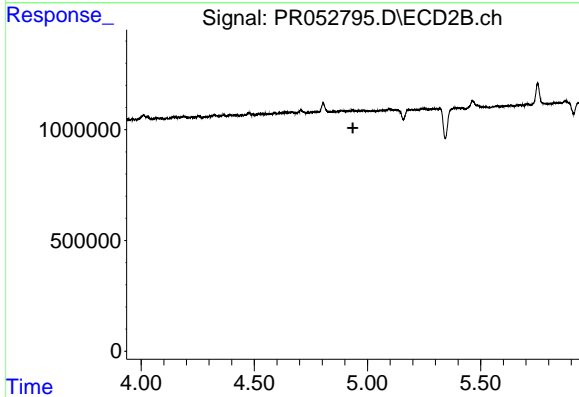
R.T.: 5.752 min
 Delta R.T.: 0.020 min
 Response: 1313146
 Conc: 17.49 ng/ml



#21 AR-1248-1

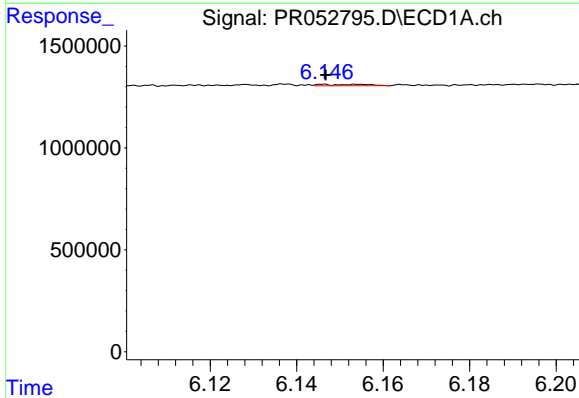
R.T.: 5.881 min
 Delta R.T.: 0.006 min
 Response: 83411
 Conc: 1.15 ng/ml

Instrument :
 ECD_R
 ClientSampleId :



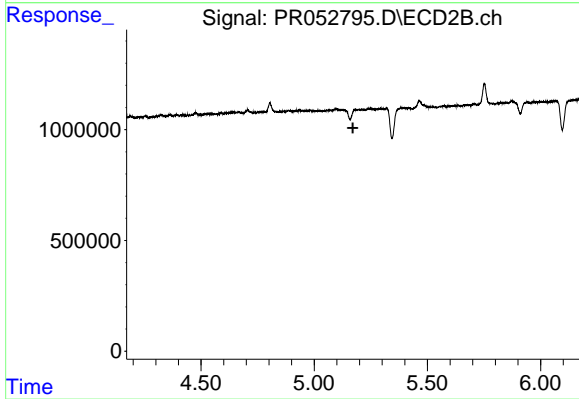
#21 AR-1248-1

R.T.: 0.000 min
 Exp R.T. : 4.936 min
 Response: 0
 Conc: N.D.



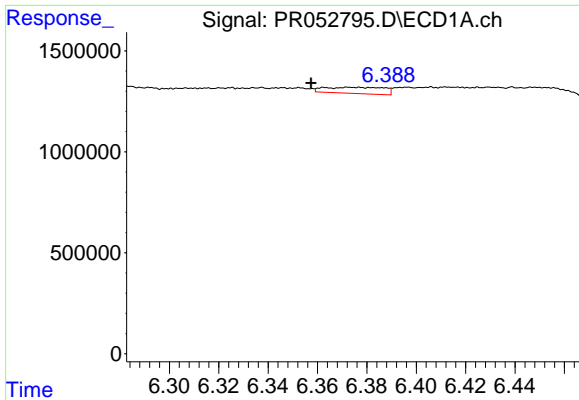
#22 AR-1248-2

R.T.: 6.146 min
 Delta R.T.: 0.000 min
 Response: 51520
 Conc: 0.49 ng/ml



#22 AR-1248-2

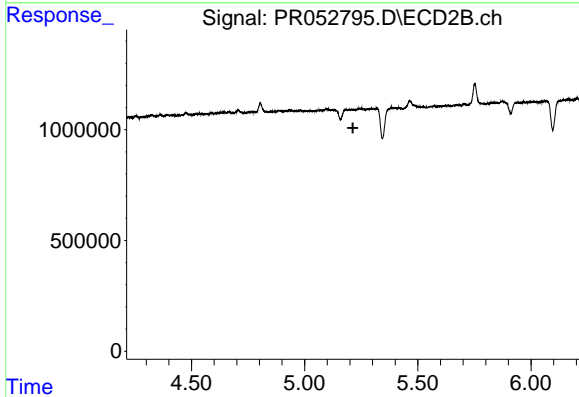
R.T.: 5.181 min
 Delta R.T.: 0.011 min
 Response: -223345
 Conc: N.D.



#23 AR-1248-3

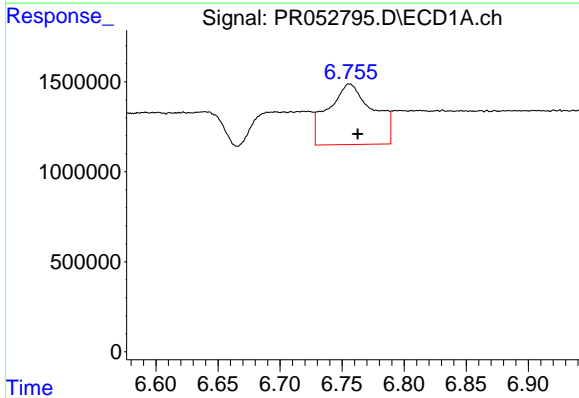
R.T.: 6.373 min
 Delta R.T.: 0.015 min
 Response: 514310
 Conc: 4.41 ng/ml

Instrument :
 ECD_R
 ClientSampleId :



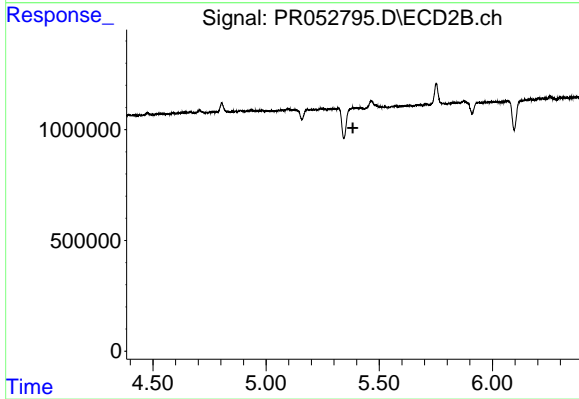
#23 AR-1248-3

R.T.: 5.181 min
 Delta R.T.: -0.032 min
 Response: -223345
 Conc: N.D.



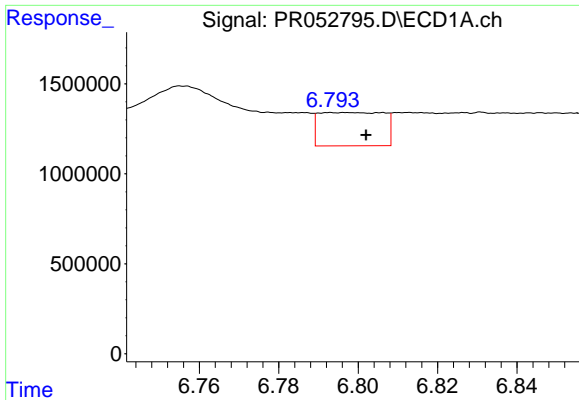
#24 AR-1248-4

R.T.: 6.756 min
 Delta R.T.: -0.007 min
 Response: 8496836
 Conc: 65.16 ng/ml



#24 AR-1248-4

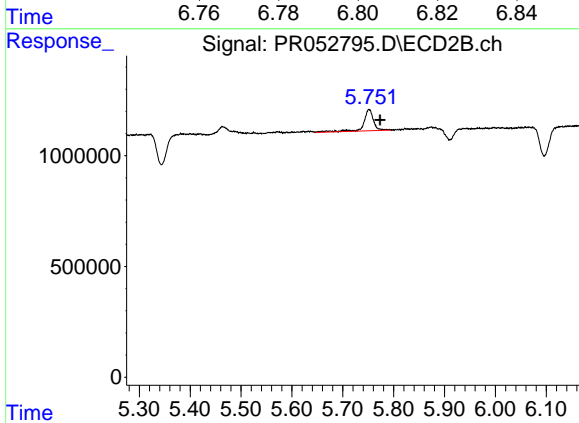
R.T.: 0.000 min
 Exp R.T.: 5.384 min
 Response: 0
 Conc: N.D.



#25 AR-1248-5

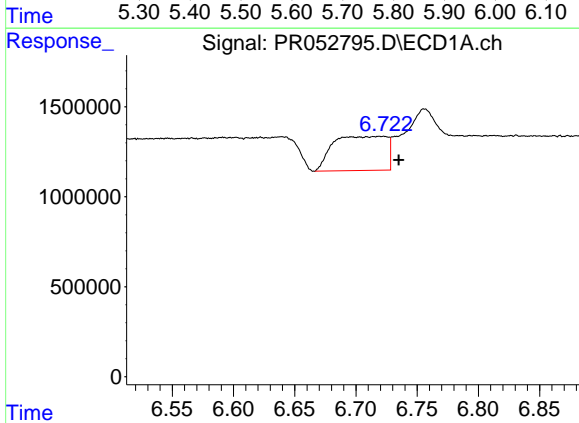
R.T.: 6.794 min
 Delta R.T.: -0.008 min
 Response: 2093209
 Conc: 16.72 ng/ml

Instrument :
 ECD_R
 ClientSampleId :



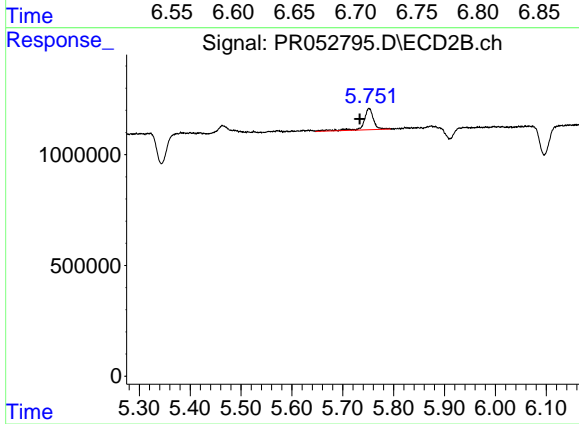
#25 AR-1248-5

R.T.: 5.752 min
 Delta R.T.: -0.022 min
 Response: 1313146
 Conc: 12.75 ng/ml



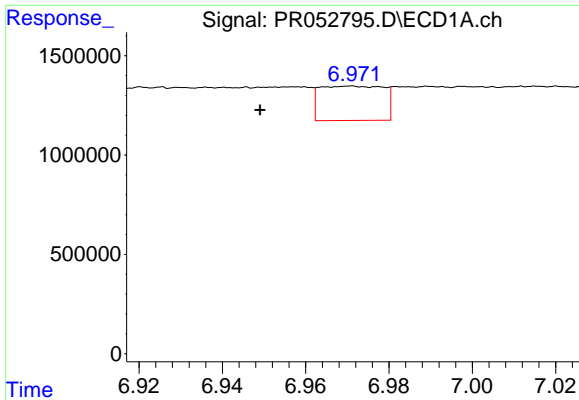
#26 AR-1254-1

R.T.: 6.722 min
 Delta R.T.: -0.013 min
 Response: 5812276
 Conc: 43.88 ng/ml



#26 AR-1254-1

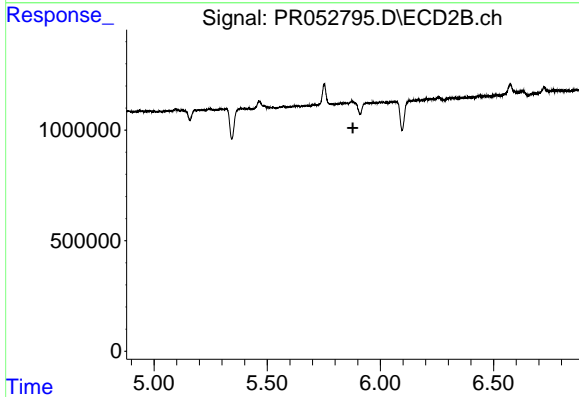
R.T.: 5.752 min
 Delta R.T.: 0.019 min
 Response: 1313146
 Conc: 8.49 ng/ml



#27 AR-1254-2

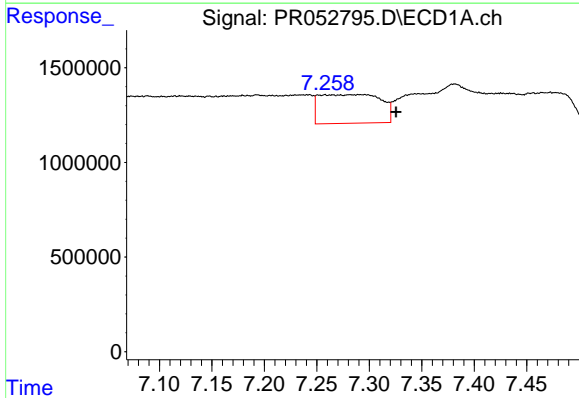
R.T.: 6.971 min
 Delta R.T.: 0.022 min
 Response: 1841701
 Conc: 9.00 ng/ml

Instrument :
 ECD_R
 ClientSampleId :



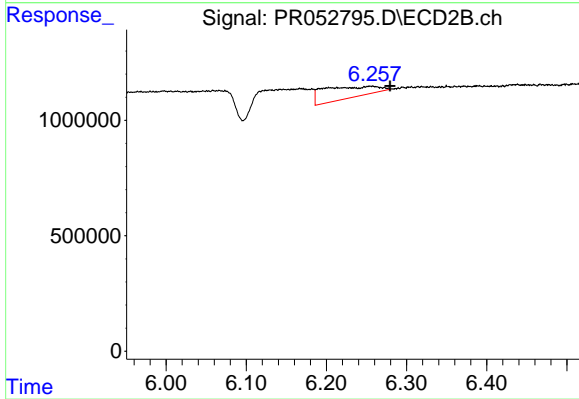
#27 AR-1254-2

R.T.: 0.000 min
 Exp R.T. : 5.878 min
 Response: 0
 Conc: N.D.



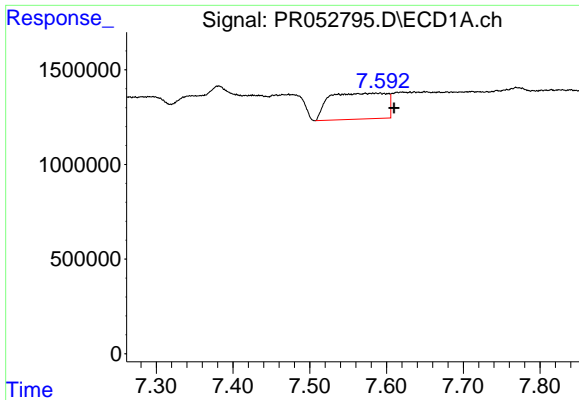
#28 AR-1254-3

R.T.: 7.283 min
 Delta R.T.: -0.043 min
 Response: 6160185
 Conc: 29.00 ng/ml



#28 AR-1254-3

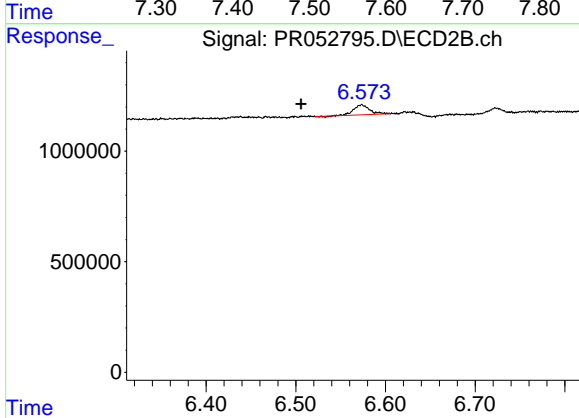
R.T.: 6.257 min
 Delta R.T.: -0.022 min
 Response: 2296842
 Conc: 10.16 ng/ml



#29 AR-1254-4

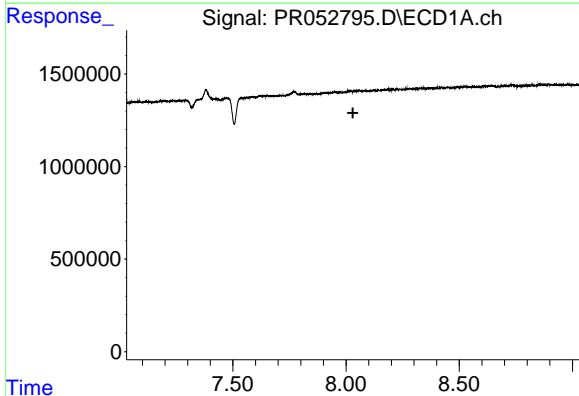
R.T.: 7.587 min
 Delta R.T.: -0.023 min
 Response: 7078844
 Conc: 43.85 ng/ml

Instrument :
 ECD_R
 ClientSampleId :



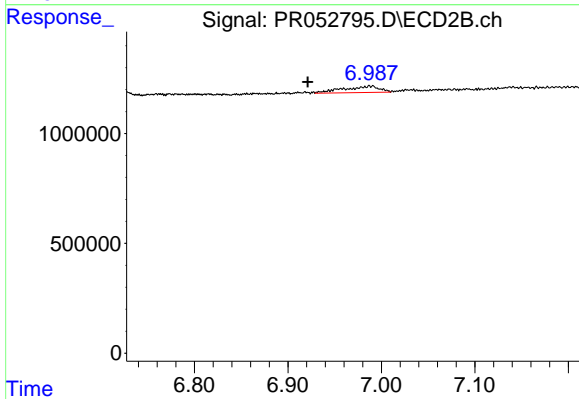
#29 AR-1254-4

R.T.: 6.573 min
 Delta R.T.: 0.067 min
 Response: 555460
 Conc: 4.01 ng/ml



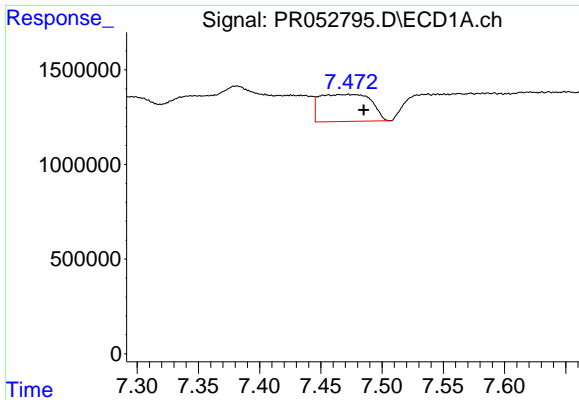
#30 AR-1254-5

R.T.: 0.000 min
 Exp R.T. : 8.030 min
 Response: 0
 Conc: N.D.



#30 AR-1254-5

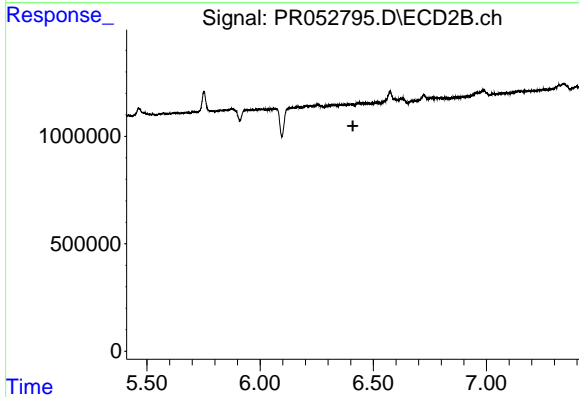
R.T.: 6.991 min
 Delta R.T.: 0.070 min
 Response: 781681
 Conc: 3.73 ng/ml



#31 AR-1260-1

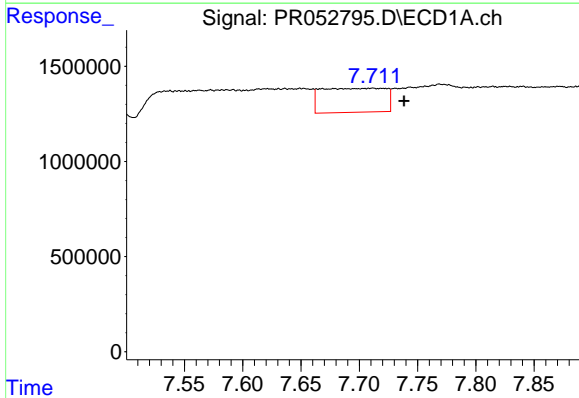
R.T.: 7.473 min
 Delta R.T.: -0.012 min
 Response: 4187407
 Conc: 28.44 ng/ml

Instrument :
 ECD_R
 ClientSampleId :



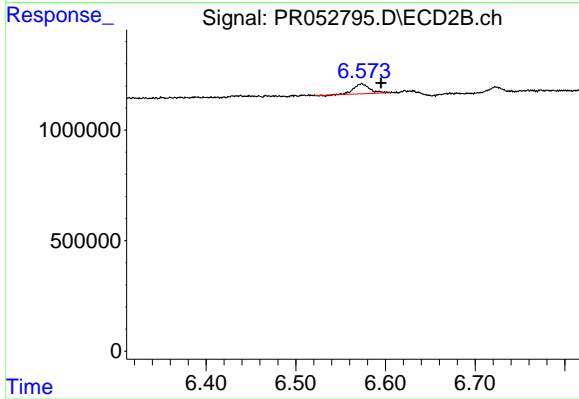
#31 AR-1260-1

R.T.: 0.000 min
 Exp R.T. : 6.410 min
 Response: 0
 Conc: N.D.



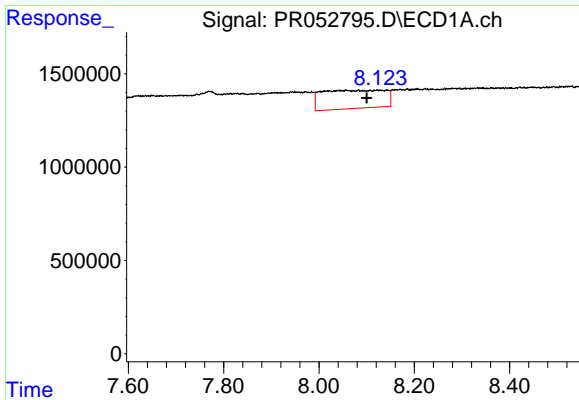
#32 AR-1260-2

R.T.: 7.711 min
 Delta R.T.: -0.028 min
 Response: 4817025
 Conc: 27.10 ng/ml



#32 AR-1260-2

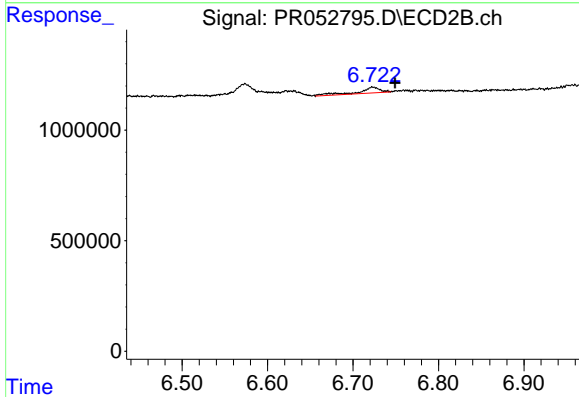
R.T.: 6.573 min
 Delta R.T.: -0.022 min
 Response: 555460
 Conc: 3.32 ng/ml



#33 AR-1260-3

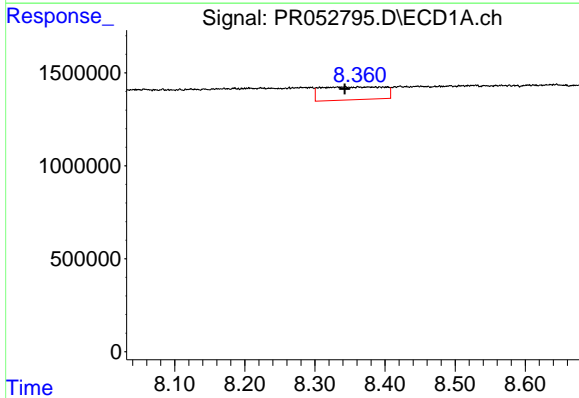
R.T.: 8.124 min
 Delta R.T.: 0.023 min
 Response: 8998837
 Conc: 64.71 ng/ml

Instrument :
 ECD_R
 ClientSampleId :



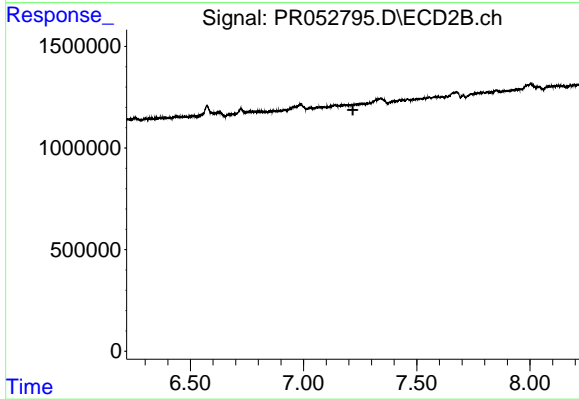
#33 AR-1260-3

R.T.: 6.723 min
 Delta R.T.: -0.026 min
 Response: 473756
 Conc: 2.85 ng/ml



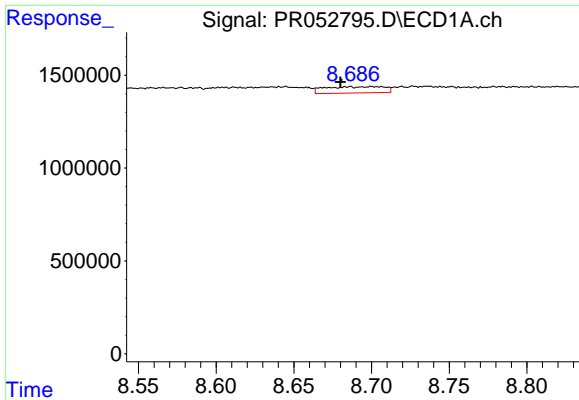
#34 AR-1260-4

R.T.: 8.342 min
 Delta R.T.: -0.001 min
 Response: 4336022
 Conc: 26.61 ng/ml



#34 AR-1260-4

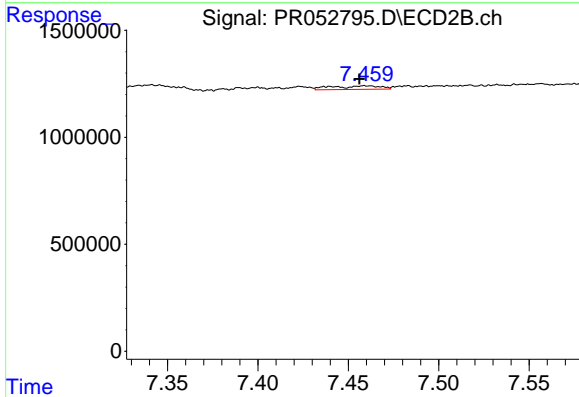
R.T.: 0.000 min
 Exp R.T. : 7.218 min
 Response: 0
 Conc: N.D.



#35 AR-1260-5

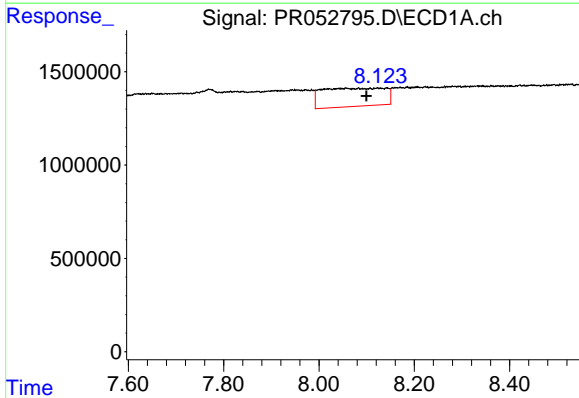
R.T.: 8.701 min
 Delta R.T.: 0.021 min
 Response: 895415
 Conc: 2.81 ng/ml

Instrument :
 ECD_R
 ClientSampleId :



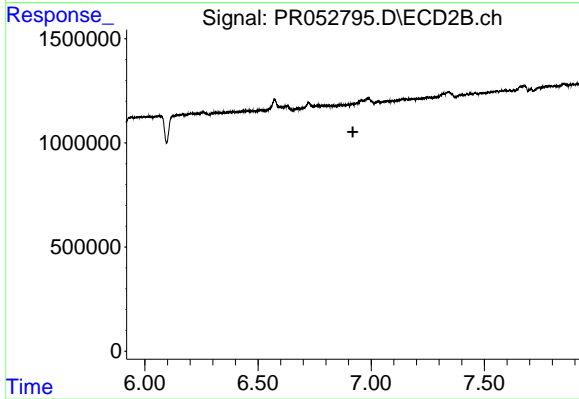
#35 AR-1260-5

R.T.: 7.459 min
 Delta R.T.: 0.003 min
 Response: 317202
 Conc: 0.87 ng/ml



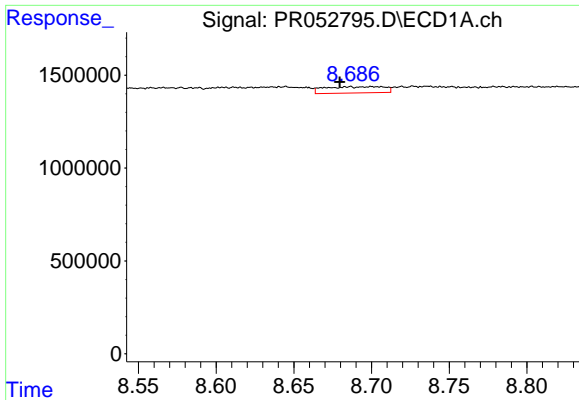
#36 AR-1262-1

R.T.: 8.124 min
 Delta R.T.: 0.024 min
 Response: 8998837
 Conc: 34.66 ng/ml



#36 AR-1262-1

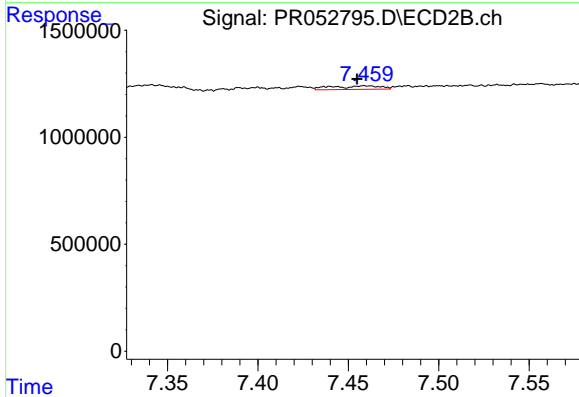
R.T.: 0.000 min
 Exp R.T. : 6.919 min
 Response: 0
 Conc: N.D.



#37 AR-1262-2

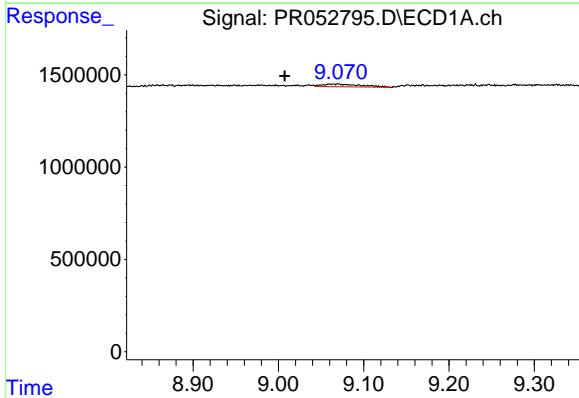
R.T.: 8.701 min
 Delta R.T.: 0.022 min
 Response: 895415
 Conc: 1.87 ng/ml

Instrument :
 ECD_R
 ClientSampleId :



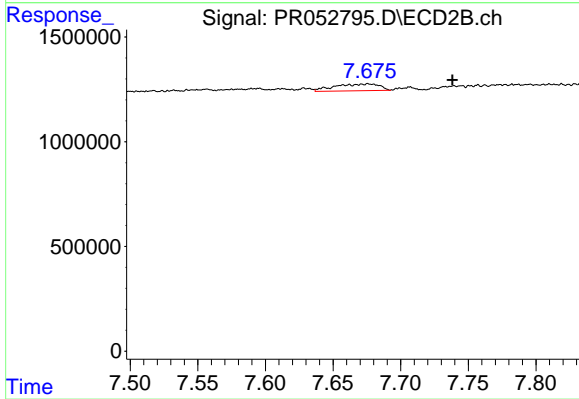
#37 AR-1262-2

R.T.: 7.459 min
 Delta R.T.: 0.004 min
 Response: 317202
 Conc: 0.62 ng/ml



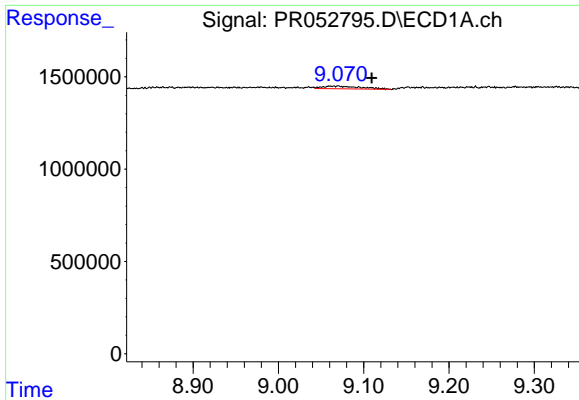
#38 AR-1262-3

R.T.: 9.069 min
 Delta R.T.: 0.061 min
 Response: 443725
 Conc: 2.09 ng/ml



#38 AR-1262-3

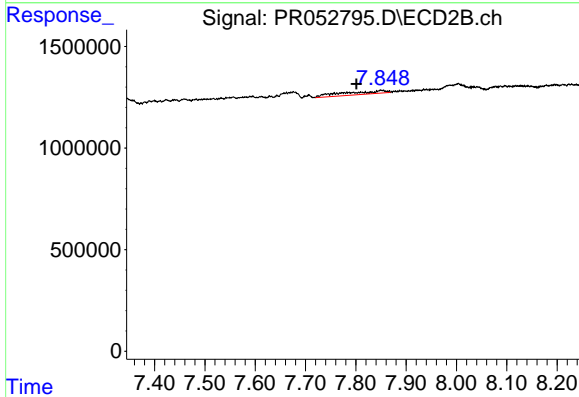
R.T.: 7.676 min
 Delta R.T.: -0.062 min
 Response: 749815
 Conc: 3.63 ng/ml



#39 AR-1262-4

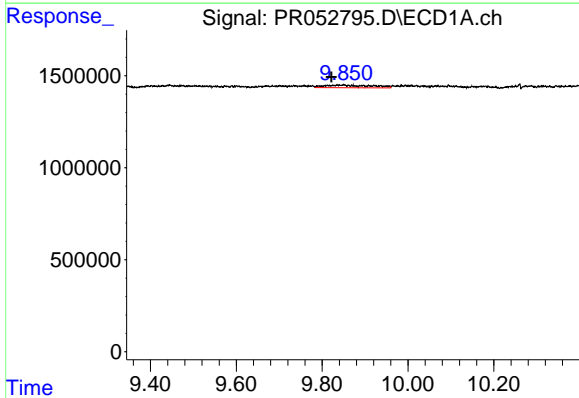
R.T.: 9.069 min
 Delta R.T.: -0.041 min
 Response: 443725
 Conc: 3.55 ng/ml

Instrument :
 ECD_R
 ClientSampleId :



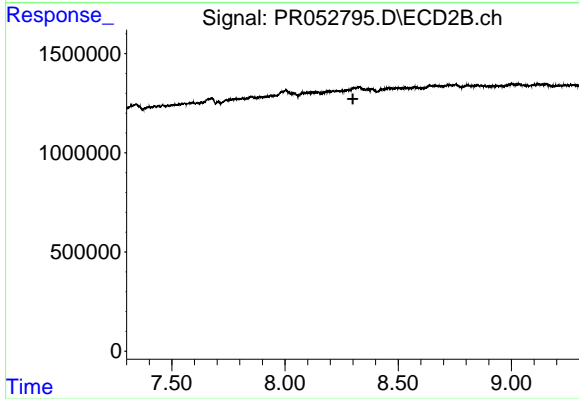
#39 AR-1262-4

R.T.: 7.849 min
 Delta R.T.: 0.048 min
 Response: 930687
 Conc: 2.38 ng/ml



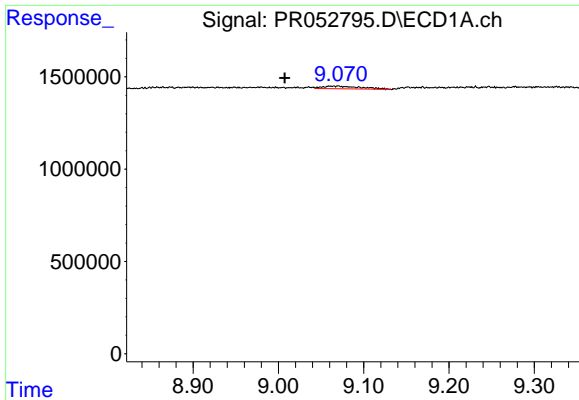
#40 AR-1262-5

R.T.: 9.845 min
 Delta R.T.: 0.024 min
 Response: 1116360
 Conc: 6.06 ng/ml



#40 AR-1262-5

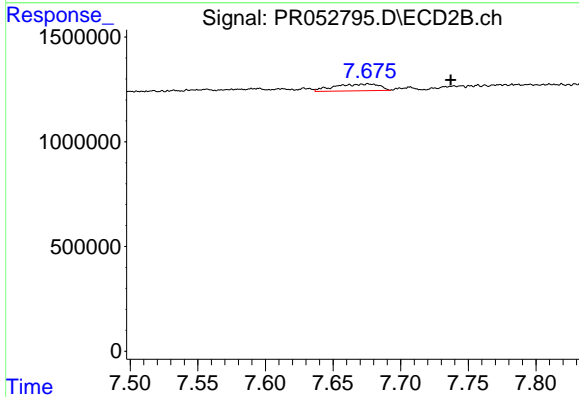
R.T.: 0.000 min
 Exp R.T. : 8.300 min
 Response: 0
 Conc: N.D.



#41 AR-1268-1

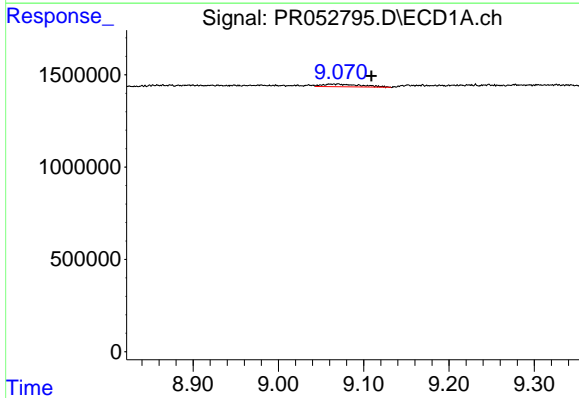
R.T.: 9.069 min
 Delta R.T.: 0.061 min
 Response: 443725
 Conc: 1.01 ng/ml

Instrument :
 ECD_R
 ClientSampleId :



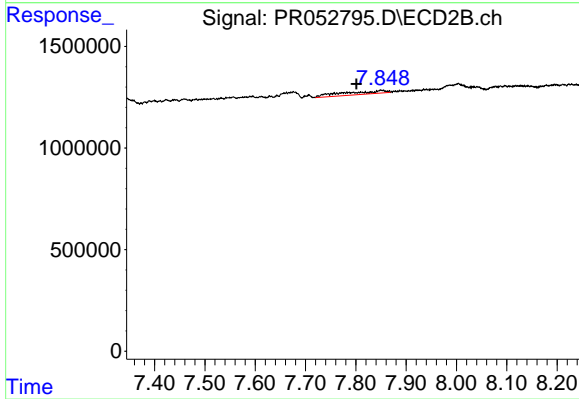
#41 AR-1268-1

R.T.: 7.676 min
 Delta R.T.: -0.061 min
 Response: 749815
 Conc: 1.63 ng/ml



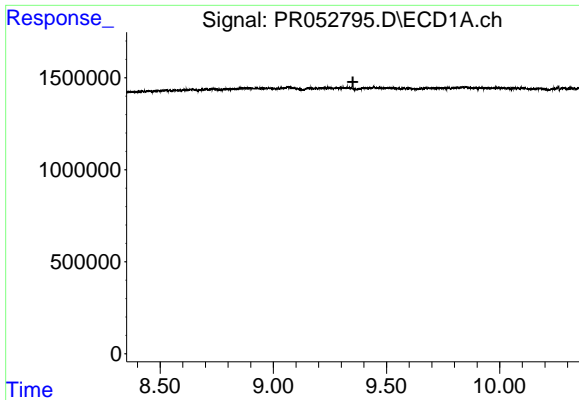
#42 AR-1268-2

R.T.: 9.069 min
 Delta R.T.: -0.040 min
 Response: 443725
 Conc: 1.10 ng/ml



#42 AR-1268-2

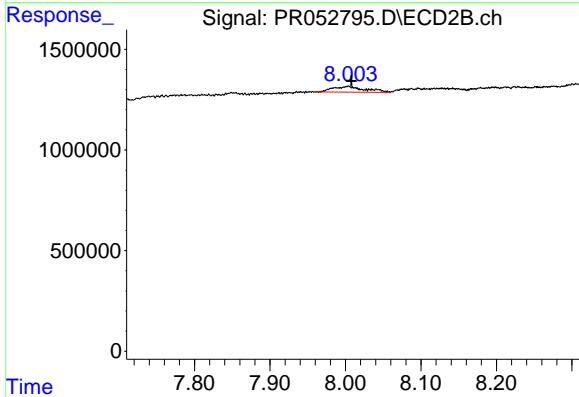
R.T.: 7.849 min
 Delta R.T.: 0.048 min
 Response: 930687
 Conc: 2.17 ng/ml



#43 AR-1268-3

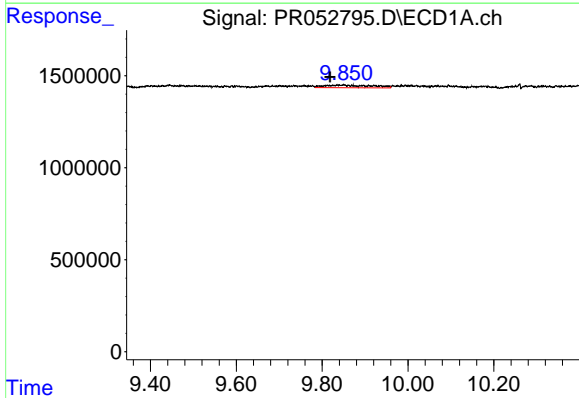
R.T.: 0.000 min
 Exp R.T.: 9.351 min
 Response: 0
 Conc: N.D.

Instrument :
 ECD_R
 ClientSampleId :



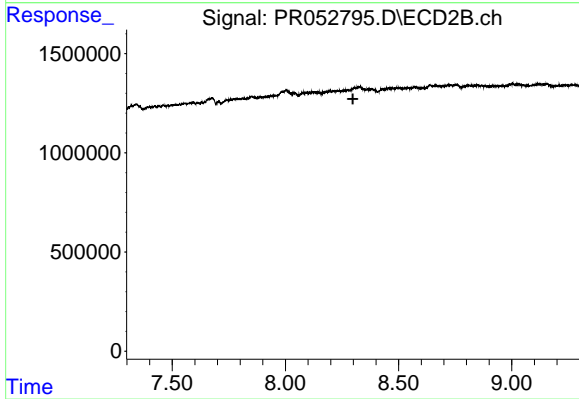
#43 AR-1268-3

R.T.: 8.004 min
 Delta R.T.: -0.004 min
 Response: 833022
 Conc: 2.27 ng/ml



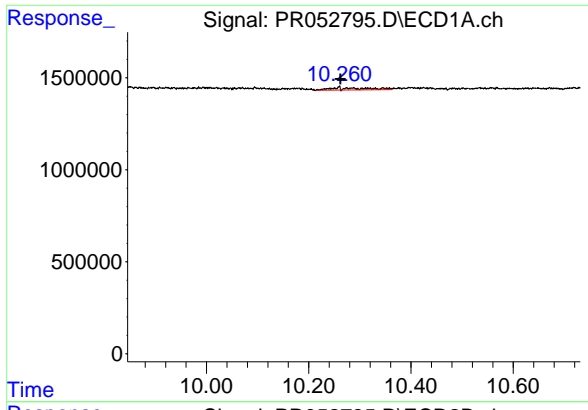
#44 AR-1268-4

R.T.: 9.845 min
 Delta R.T.: 0.027 min
 Response: 1116360
 Conc: 7.05 ng/ml



#44 AR-1268-4

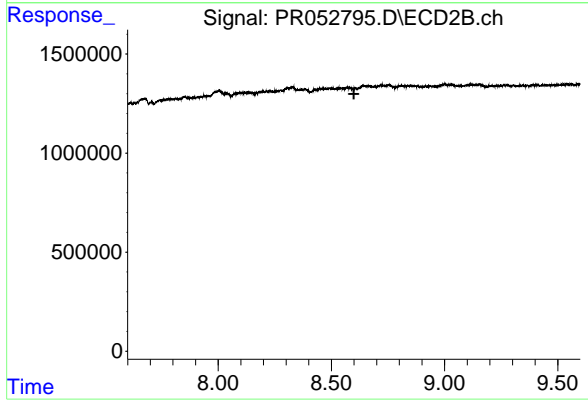
R.T.: 0.000 min
 Exp R.T.: 8.298 min
 Response: 0
 Conc: N.D.



#45 AR-1268-5

R.T.: 10.257 min
Delta R.T.: -0.006 min
Response: 674022
Conc: 0.59 ng/ml

Instrument :
ECD_R
ClientSampleId :



#45 AR-1268-5

R.T.: 0.000 min
Exp R.T. : 8.599 min
Response: 0
Conc: N.D.