

Data Path : Z:\pestpcbsrv\HPCHEM1\ECD\_R\Data\PR120518\  
 Data File : PR034282.D  
 Signal(s) : Signal #1: ECD1A.ch Signal #2: ECD2B.ch  
 Acq On : 04 Dec 2018 17:07  
 Operator : SM\SJ  
 Sample : PB115308BL  
 Misc :  
 ALS Vial : 4 Sample Multiplier: 1

Instrument :  
 ECD\_R  
 ClientSampleId :

Integration File signal 1: autoint1.e  
 Integration File signal 2: autoint2.e  
 Quant Time: Dec 05 01:13:07 2018  
 Quant Method : Z:\pestpcbsrv\HPCHEM1\ECD\_R\Method\PR120518.M  
 Quant Title : GC EXTRACTABLES  
 QLast Update : Tue Dec 04 13:48:33 2018  
 Response via : Initial Calibration  
 Integrator: ChemStation

Volume Inj. : 2 µl  
 Signal #1 Phase : ZB-MR1 Signal #2 Phase: ZB-MR2  
 Signal #1 Info : 30Mx0.32mmx 0.50µ Signal #2 Info : 30M x 0.32mm x 0.25µm

| Compound                    | RT#1   | RT#2  | Resp#1   | Resp#2   | ng/ml  | ng/ml  |
|-----------------------------|--------|-------|----------|----------|--------|--------|
| -----                       |        |       |          |          |        |        |
| System Monitoring Compounds |        |       |          |          |        |        |
| 1) SA Tetrachlo...          | 4.447  | 3.516 | 31669454 | 61709556 | 18.816 | 18.163 |
| 2) SA Decachlor...          | 10.149 | 8.432 | 28893902 | 63364854 | 16.890 | 17.244 |
| Target Compounds            |        |       |          |          |        |        |
| 32) L7 AR-1260-2            | 7.390  | 0.000 | 1144646  | 0        | 10.321 | N.D. # |
| -----                       |        |       |          |          |        |        |

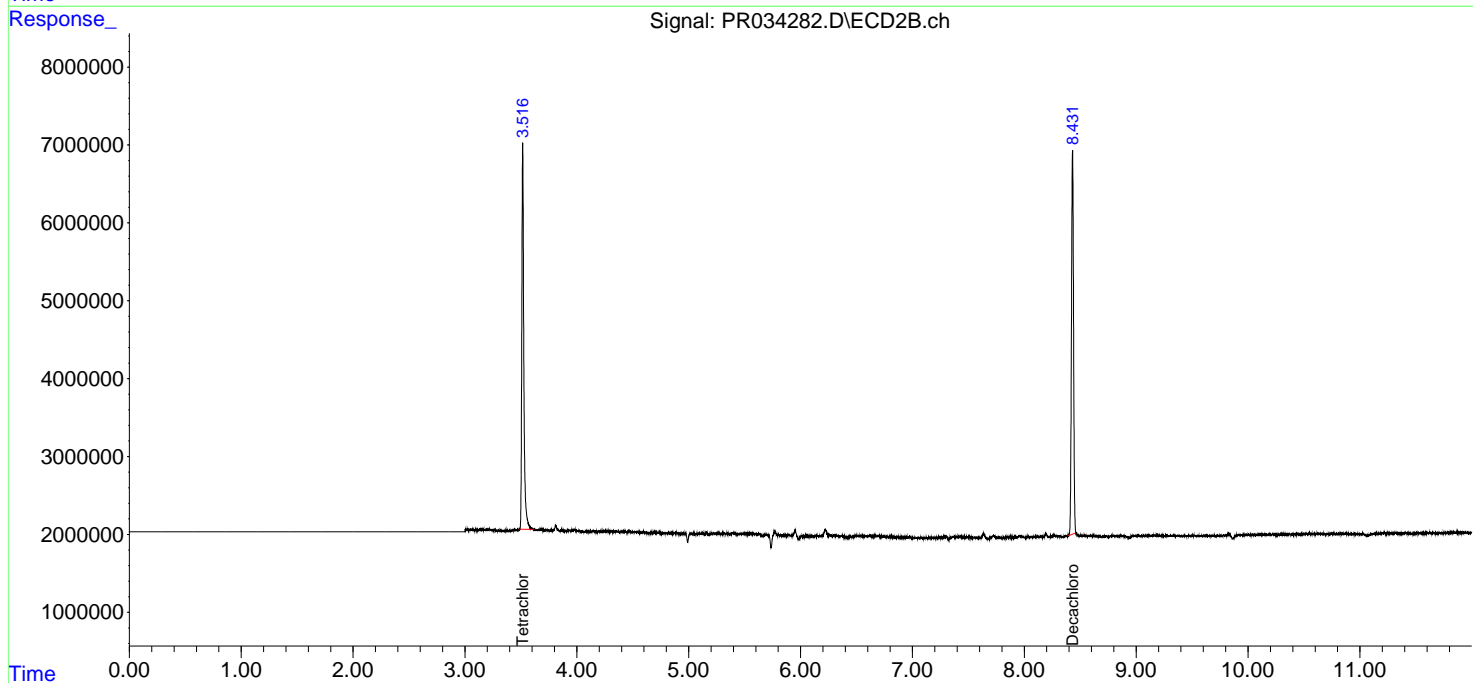
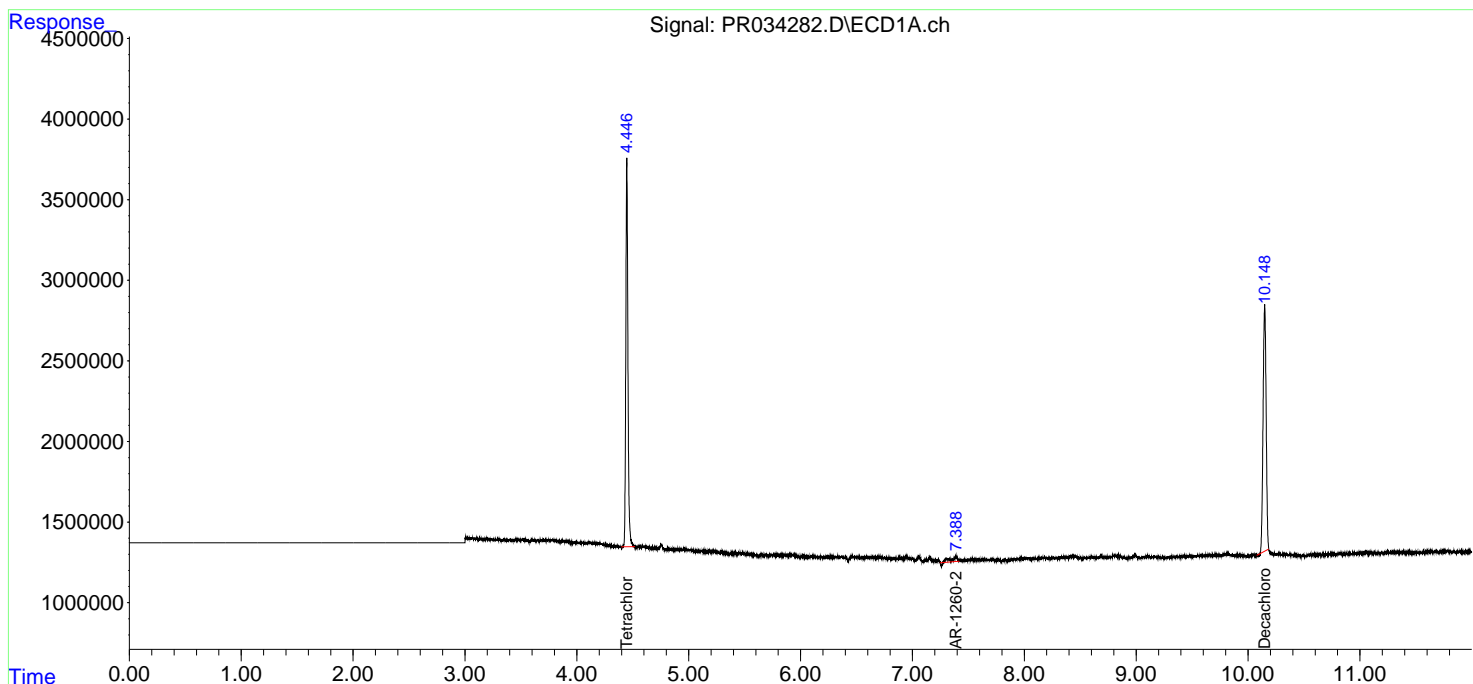
(f)=RT Delta > 1/2 Window (#)=Amounts differ by > 25% (m)=manual int.

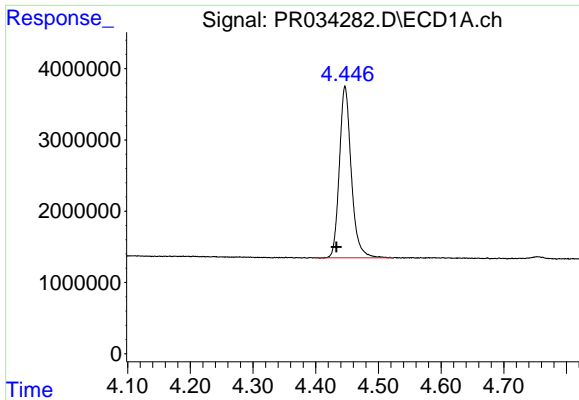
Data Path : Z:\pestpcbsrv\HPCHEM1\ECD\_R\Data\PR120518\  
 Data File : PR034282.D  
 Signal(s) : Signal #1: ECD1A.ch Signal #2: ECD2B.ch  
 Acq On : 04 Dec 2018 17:07  
 Operator : SM\SJ  
 Sample : PB115308BL  
 Misc :  
 ALS Vial : 4 Sample Multiplier: 1

Instrument :  
 ECD\_R  
 ClientSampleId :

Integration File signal 1: autoint1.e  
 Integration File signal 2: autoint2.e  
 Quant Time: Dec 05 01:13:07 2018  
 Quant Method : Z:\pestpcbsrv\HPCHEM1\ECD\_R\Method\PR120518.M  
 Quant Title : GC EXTRACTABLES  
 QLast Update : Tue Dec 04 13:48:33 2018  
 Response via : Initial Calibration  
 Integrator: ChemStation

Volume Inj. : 2 µl  
 Signal #1 Phase : ZB-MR1 Signal #2 Phase: ZB-MR2  
 Signal #1 Info : 30Mx0.32mmx 0.50µ Signal #2 Info : 30M x 0.32mm x 0.25µm

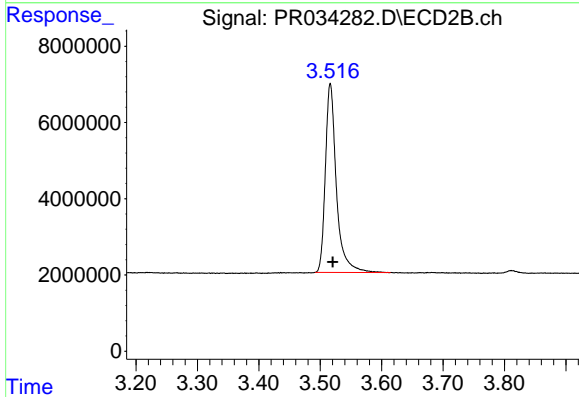




#1 Tetrachloro-m-xylene

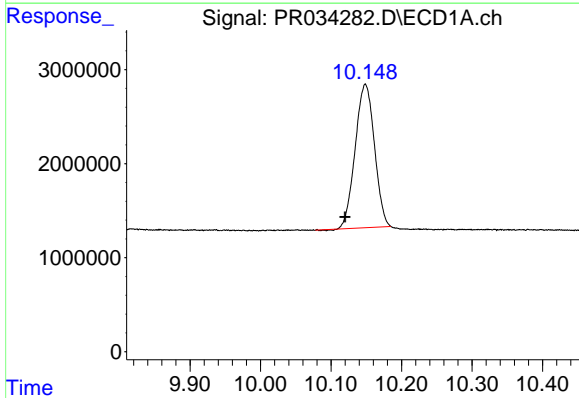
R.T.: 4.447 min  
Delta R.T.: 0.014 min  
Response: 31669454  
Conc: 18.82 ng/ml

Instrument :  
ECD\_R  
ClientSampleId :



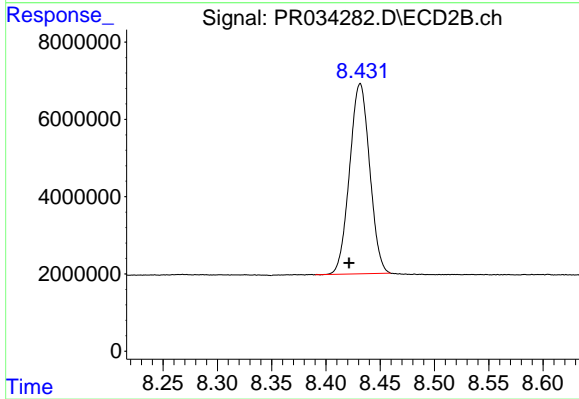
#1 Tetrachloro-m-xylene

R.T.: 3.516 min  
Delta R.T.: -0.004 min  
Response: 61709556  
Conc: 18.16 ng/ml



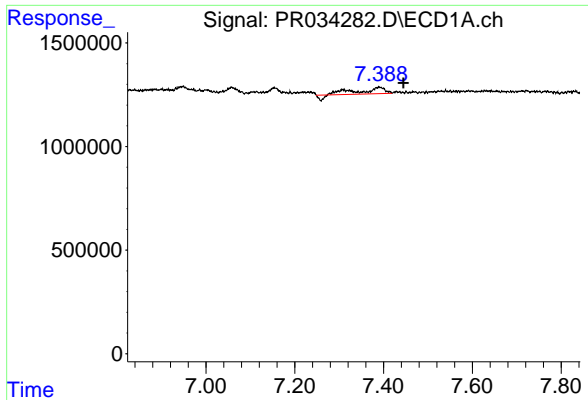
#2 Decachlorobiphenyl

R.T.: 10.149 min  
Delta R.T.: 0.029 min  
Response: 28893902  
Conc: 16.89 ng/ml



#2 Decachlorobiphenyl

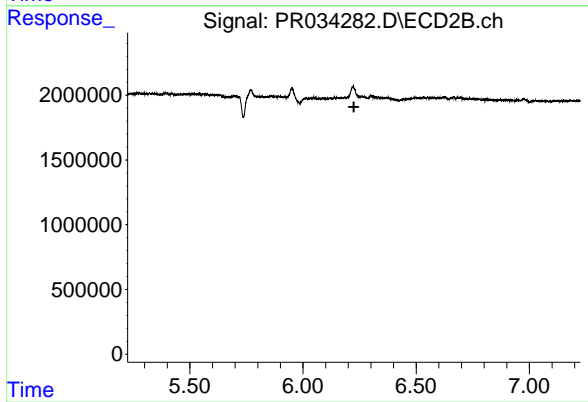
R.T.: 8.432 min  
Delta R.T.: 0.010 min  
Response: 63364854  
Conc: 17.24 ng/ml



#32 AR-1260-2

R.T.: 7.390 min  
Delta R.T.: -0.055 min  
Response: 1144646  
Conc: 10.32 ng/ml

Instrument :  
ECD\_R  
ClientSampleId :



#32 AR-1260-2

R.T.: 0.000 min  
Exp R.T. : 6.225 min  
Response: 0  
Conc: N.D.