

Data Path : Z:\pestpcbsrv\HPCHEM1\ECD\_R\Data\PR120624\  
 Data File : PR069366.D  
 Signal(s) : Signal #1: ECD1A.ch Signal #2: ECD2B.ch  
 Acq On : 06 Dec 2024 11:06  
 Operator : AJ\MA  
 Sample : AR1248CCC400  
 Misc :  
 ALS Vial : 5 Sample Multiplier: 1

Instrument :  
 ECD\_R  
 ClientSampleId :  
 AR12483251

Integration File signal 1: autoint1.e  
 Integration File signal 2: autoint2.e  
 Quant Time: Dec 06 22:55:18 2024  
 Quant Method : Z:\pestpcbsrv\HPCHEM1\ECD\_R\Method\PR112124CLP.M  
 Quant Title : GC EXTRACTABLES  
 QLast Update : Fri Nov 22 04:30:58 2024  
 Response via : Initial Calibration  
 Integrator: ChemStation

Volume Inj. : 1 µl  
 Signal #1 Phase : ZB MR1 Signal #2 Phase: ZB MR2  
 Signal #1 Info : 30Mx0.32mmx 0.5µm Signal #2 Info : 30M x 0.32mm x 0.25µm

Compound	RT#1	RT#2	Resp#1	Resp#2	ng/ml	ng/ml
-----						
System Monitoring Compounds						
1) SA Tetrachlo...	3.637	2.969	19074254	121.7E6	18.234	19.544
2) SA Decachlor...	9.528	8.251	20684032	137.6E6	38.511	36.505
Target Compounds						
3) L1 AR-1016-1	4.858	4.090	6947067	45468210	217.331	227.128
4) L1 AR-1016-2	4.880	4.108	8936908	48567139	188.670	170.563
5) L1 AR-1016-3	4.943	4.289	4534594	31469226	153.973	205.965 #
6) L1 AR-1016-4	5.044	4.339	4870302	63917438	209.118	516.371 #
7) L1 AR-1016-5	5.361	4.558	11877093	75215925	495.660	496.929
8) L2 AR-1221-1	0.000	3.193	0	537258	N.D.	7.171 #
9) L2 AR-1221-2	3.949	3.274	406030	2379307	54.754	44.952
10) L2 AR-1221-3	4.026	3.356	685306	3971363	24.617	23.654
11) L3 AR-1232-1	4.026	3.356	685306	3971363	30.736	29.598
12) L3 AR-1232-2	4.573	4.108	3417061	48567139	296.256	367.907
13) L3 AR-1232-3	4.880	4.289	8936908	31469226	412.217	457.567
14) L3 AR-1232-4	5.044	4.381	4870302	64585408	461.254	1084.926 #
15) L3 AR-1232-5	5.149	4.558	10162794	75215925	1367.129	1190.977
16) L4 AR-1242-1	4.858	4.090	6947067	45468210	263.023	271.948
17) L4 AR-1242-2	4.880	4.108	8936908	48567139	225.963	204.402
18) L4 AR-1242-3	4.943	4.289	4534594	31469226	183.786	246.849 #
19) L4 AR-1242-4	5.044	4.381	4870302	64585408	253.166	533.048 #
20) L4 AR-1242-5	5.833	4.931	12882155	97791358	628.273	678.080
21) L5 AR-1248-1	4.858	4.090	6947067	45468210	353.633	364.273
22) L5 AR-1248-2	5.149	4.339	10162794	63917438	370.075	368.930
23) L5 AR-1248-3	5.361	4.381	11877093	64585408	371.947	369.150
24) L5 AR-1248-4	5.794	4.558	12413709	75215925	356.083	366.380
25) L5 AR-1248-5	5.833	4.973	12882155	68277037	372.504	347.215
26) L6 AR-1254-1	5.763	4.931	9814174	97791358	273.082	327.733
27) L6 AR-1254-2	6.001	5.091	12484433	29605249	226.866	115.594 #
28) L6 AR-1254-3	6.393	5.514	7241527	43463375	126.758	110.008
29) L6 AR-1254-4	6.706	5.762	4684422	27818593	115.232	113.594
30) L6 AR-1254-5	7.160	6.208	969956	10176893	22.667	29.161 #
31) L7 AR-1260-1	6.573	5.664	1243886	21673201	30.139	85.550 #
32) L7 AR-1260-2	6.858	5.861	592806	4457243	12.424	15.039
33) L7 AR-1260-3	0.000	6.017	0	4984366	N.D.	17.587 #
34) L7 AR-1260-4	7.468	6.529	482814	885285	11.608	3.665 #
35) L7 AR-1260-5	0.000	6.795	0	1366885	N.D.	2.396 #
36) L8 AR-1262-1	0.000	6.280	0	1479357	N.D.	4.147 #
37) L8 AR-1262-2	0.000	6.795	0	1366885	N.D.	2.153 #
38) L8 AR-1262-3	0.000	7.165f	0	2001038	N.D.	8.005 #
39) L8 AR-1262-4	0.000	7.165	0	2001038	N.D.	4.214 #
40) L8 AR-1262-5	0.000	7.705	0	341204	N.D.	1.565 #
41) L9 AR-1268-1	0.000	7.165f	0	2001038	N.D.	2.725 #

Data Path : Z:\pestpcbsrv\HPCHEM1\ECD\_R\Data\PR120624\  
 Data File : PR069366.D  
 Signal(s) : Signal #1: ECD1A.ch Signal #2: ECD2B.ch  
 Acq On : 06 Dec 2024 11:06  
 Operator : AJ\MA  
 Sample : AR1248CCC400  
 Misc :  
 ALS Vial : 5 Sample Multiplier: 1

Instrument :  
 ECD\_R  
 ClientSampleId :  
 AR12483251

Integration File signal 1: autoint1.e  
 Integration File signal 2: autoint2.e  
 Quant Time: Dec 06 22:55:18 2024  
 Quant Method : Z:\pestpcbsrv\HPCHEM1\ECD\_R\Method\PR112124CLP.M  
 Quant Title : GC EXTRACTABLES  
 QLast Update : Fri Nov 22 04:30:58 2024  
 Response via : Initial Calibration  
 Integrator: ChemStation

Volume Inj. : 1 µl  
 Signal #1 Phase : ZB MR1 Signal #2 Phase: ZB MR2  
 Signal #1 Info : 30Mx0.32mmx 0.5µm Signal #2 Info : 30M x 0.32mm x 0.25µm

	Compound	RT#1	RT#2	Resp#1	Resp#2	ng/ml	ng/ml
42)	L9 AR-1268-2	0.000	7.165	0	2001038	N.D.	2.923 #
43)	L9 AR-1268-3	0.000	7.392	0	412178	N.D.	0.717 #
44)	L9 AR-1268-4	0.000	7.705	0	341204	N.D.	1.380 #
45)	L9 AR-1268-5	0.000	8.004	0	1485425	N.D.	0.812 #

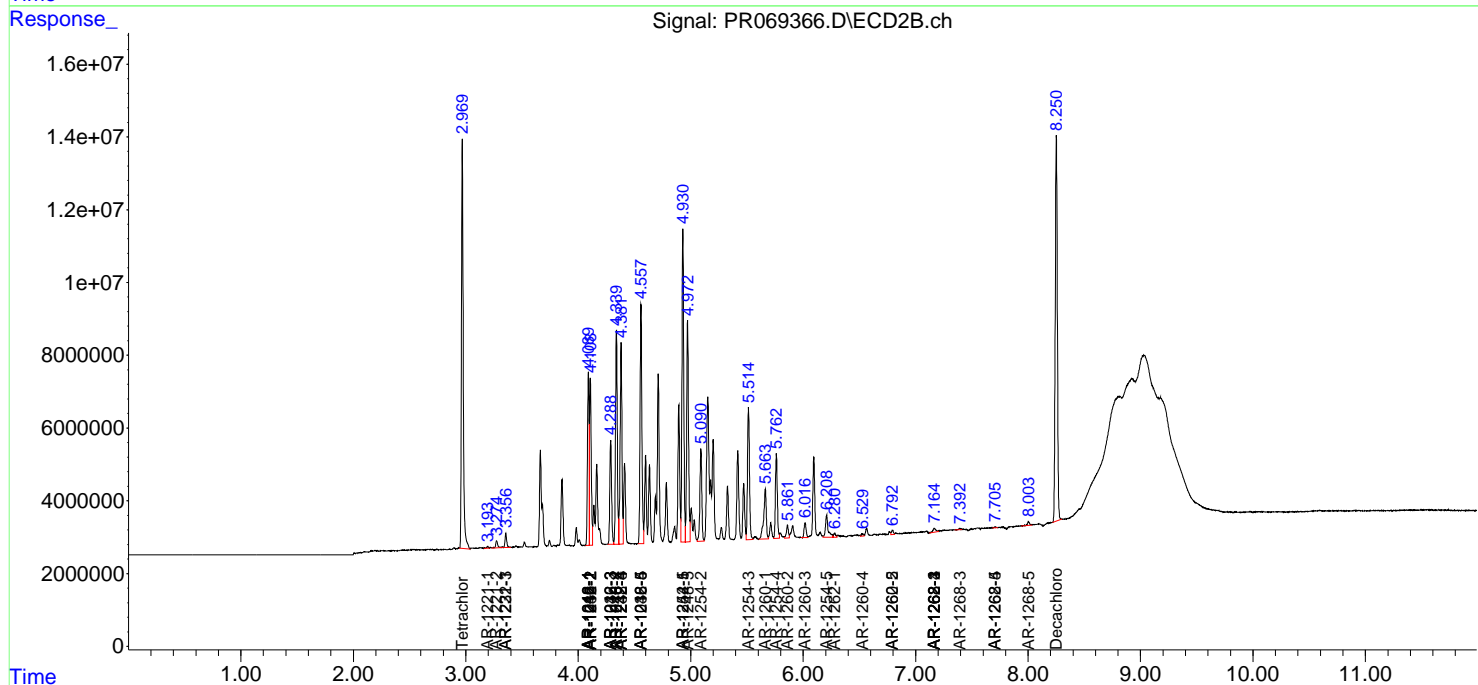
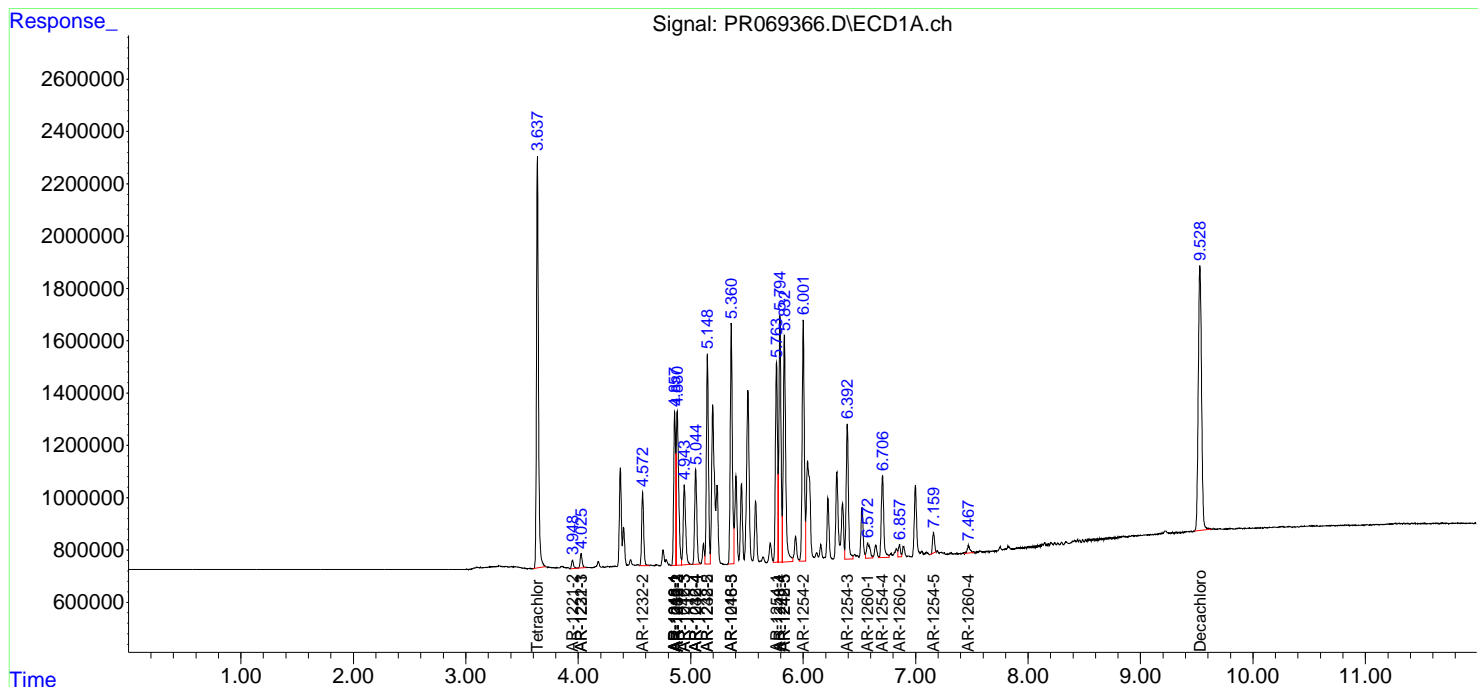
(f)=RT Delta > 1/2 Window (#)=Amounts differ by > 25% (m)=manual int.

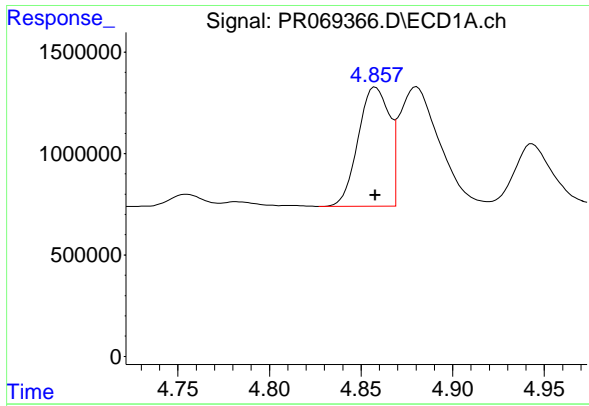
Data Path : Z:\pestpcbsrv\HPCHEM1\ECD\_R\Data\PR120624\  
 Data File : PR069366.D  
 Signal(s) : Signal #1: ECD1A.ch Signal #2: ECD2B.ch  
 Acq On : 06 Dec 2024 11:06  
 Operator : AJ\MA  
 Sample : AR1248CCC400  
 Misc :  
 ALS Vial : 5 Sample Multiplier: 1

Instrument :  
 ECD\_R  
 ClientSampleId :  
 AR12483251

Integration File signal 1: autoint1.e  
 Integration File signal 2: autoint2.e  
 Quant Time: Dec 06 22:55:18 2024  
 Quant Method : Z:\pestpcbsrv\HPCHEM1\ECD\_R\Method\PR112124CLP.M  
 Quant Title : GC EXTRACTABLES  
 QLast Update : Fri Nov 22 04:30:58 2024  
 Response via : Initial Calibration  
 Integrator: ChemStation

Volume Inj. : 1 µl  
 Signal #1 Phase : ZB MR1 Signal #2 Phase: ZB MR2  
 Signal #1 Info : 30Mx0.32mmx 0.5µm Signal #2 Info : 30M x 0.32mm x 0.25µm

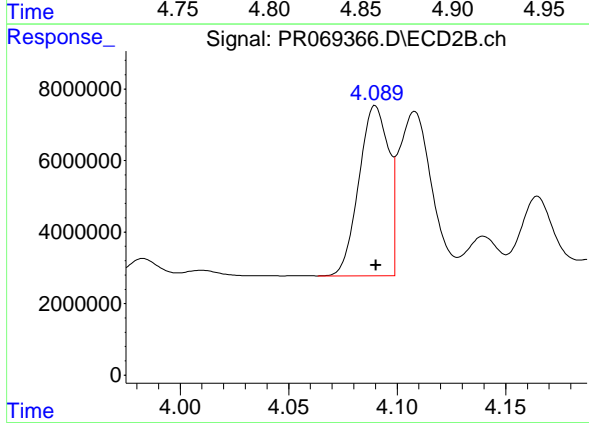




#3 AR-1016-1

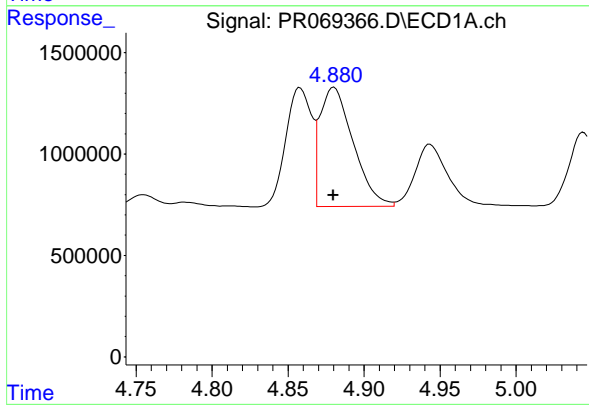
R.T.: 4.858 min  
 Delta R.T.: 0.000 min  
 Response: 6947067  
 Conc: 217.33 ng/ml

Instrument :  
 ECD\_R  
 ClientSampleId :  
 AR12483251



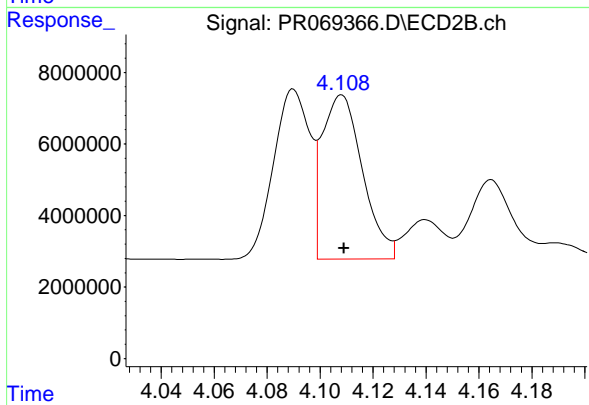
#3 AR-1016-1

R.T.: 4.090 min  
 Delta R.T.: 0.000 min  
 Response: 45468210  
 Conc: 227.13 ng/ml



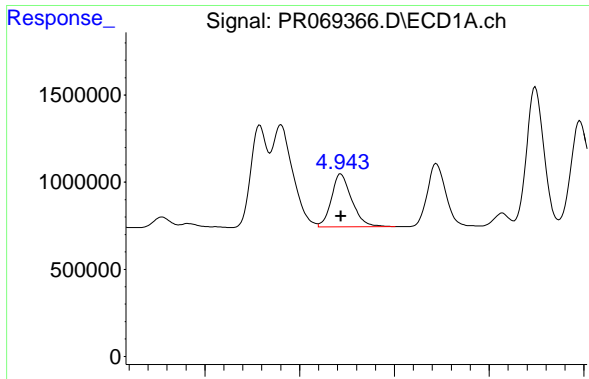
#4 AR-1016-2

R.T.: 4.880 min  
 Delta R.T.: 0.000 min  
 Response: 8936908  
 Conc: 188.67 ng/ml



#4 AR-1016-2

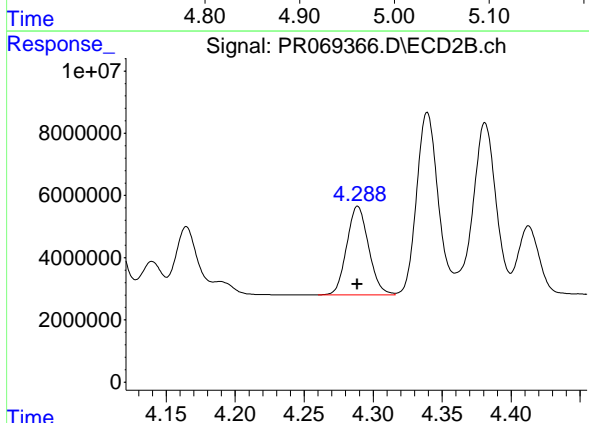
R.T.: 4.108 min  
 Delta R.T.: 0.000 min  
 Response: 48567139  
 Conc: 170.56 ng/ml



#5 AR-1016-3

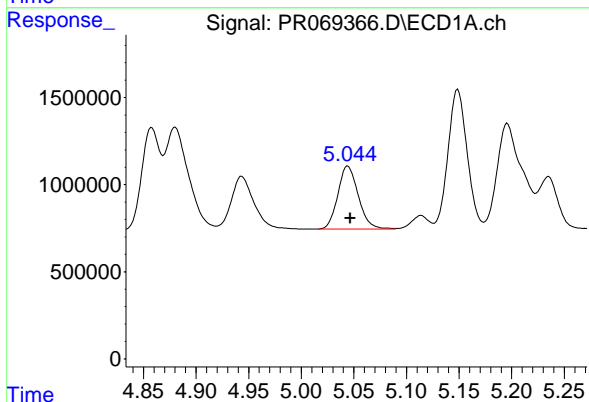
R.T.: 4.943 min  
 Delta R.T.: 0.000 min  
 Response: 4534594  
 Conc: 153.97 ng/ml

Instrument :  
 ECD\_R  
 ClientSampleId :  
 AR12483251



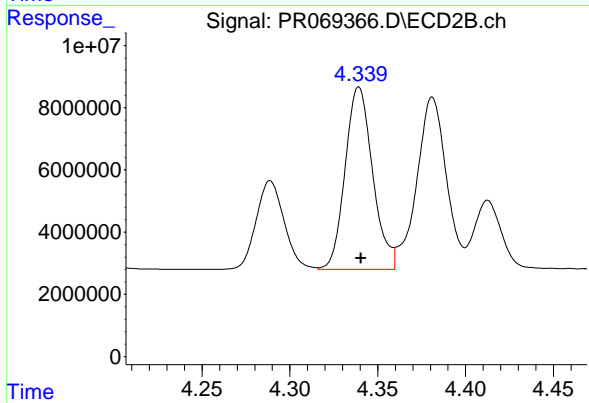
#5 AR-1016-3

R.T.: 4.289 min  
 Delta R.T.: 0.000 min  
 Response: 31469226  
 Conc: 205.97 ng/ml



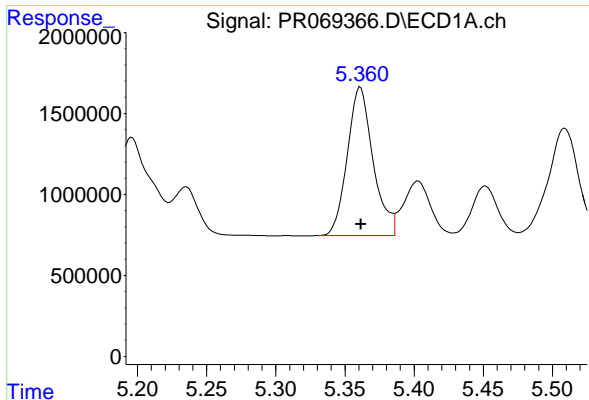
#6 AR-1016-4

R.T.: 5.044 min  
 Delta R.T.: -0.003 min  
 Response: 4870302  
 Conc: 209.12 ng/ml



#6 AR-1016-4

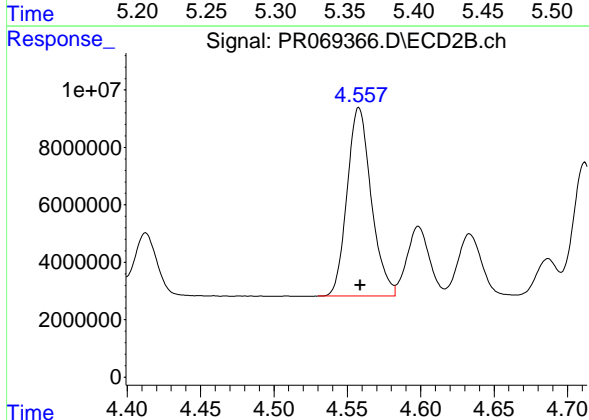
R.T.: 4.339 min  
 Delta R.T.: -0.001 min  
 Response: 63917438  
 Conc: 516.37 ng/ml



#7 AR-1016-5

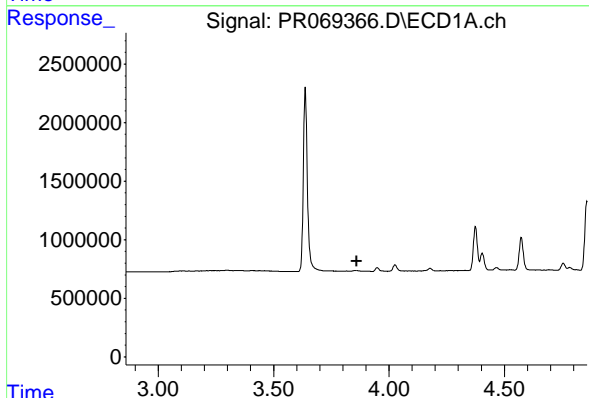
R.T.: 5.361 min  
 Delta R.T.: 0.000 min  
 Response: 11877093  
 Conc: 495.66 ng/ml

Instrument :  
 ECD\_R  
 ClientSampleId :  
 AR12483251



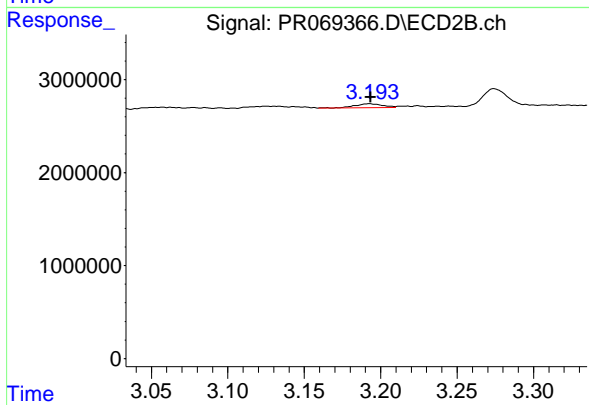
#7 AR-1016-5

R.T.: 4.558 min  
 Delta R.T.: 0.000 min  
 Response: 75215925  
 Conc: 496.93 ng/ml



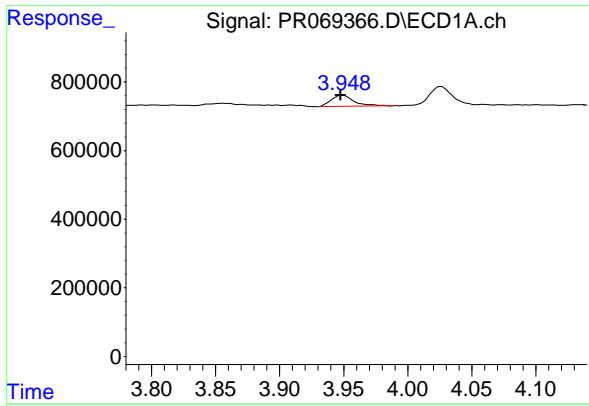
#8 AR-1221-1

R.T.: 0.000 min  
 Exp R.T. : 3.859 min  
 Response: 0  
 Conc: N.D.



#8 AR-1221-1

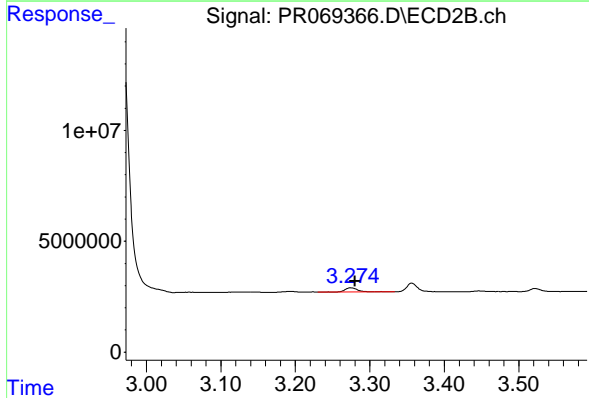
R.T.: 3.193 min  
 Delta R.T.: 0.000 min  
 Response: 537258  
 Conc: 7.17 ng/ml



#9 AR-1221-2

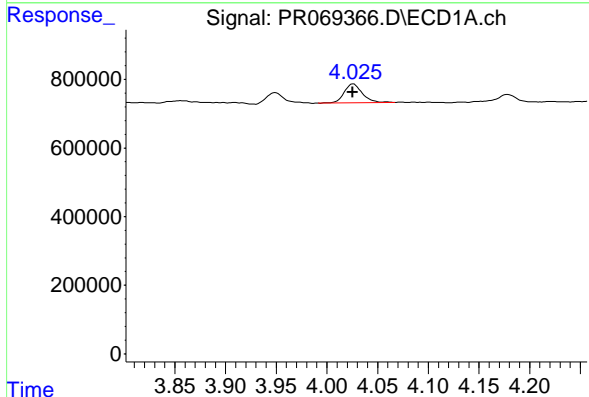
R.T.: 3.949 min  
 Delta R.T.: 0.002 min  
 Response: 406030  
 Conc: 54.75 ng/ml

Instrument :  
 ECD\_R  
 ClientSampleId :  
 AR12483251



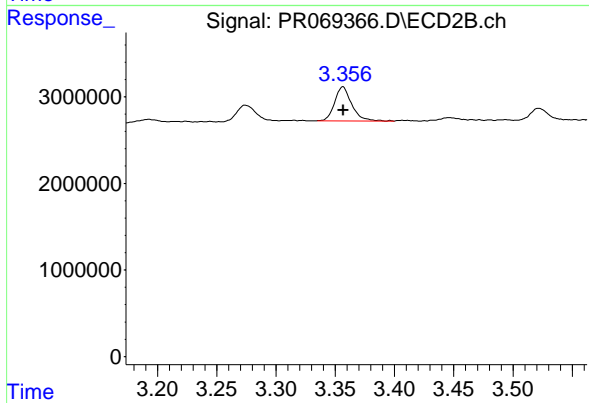
#9 AR-1221-2

R.T.: 3.274 min  
 Delta R.T.: -0.005 min  
 Response: 2379307  
 Conc: 44.95 ng/ml



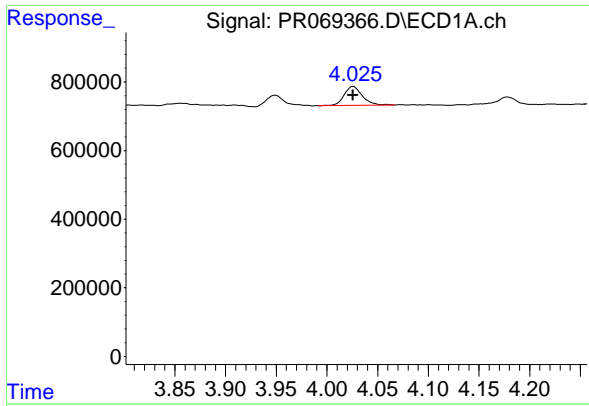
#10 AR-1221-3

R.T.: 4.026 min  
 Delta R.T.: 0.000 min  
 Response: 685306  
 Conc: 24.62 ng/ml



#10 AR-1221-3

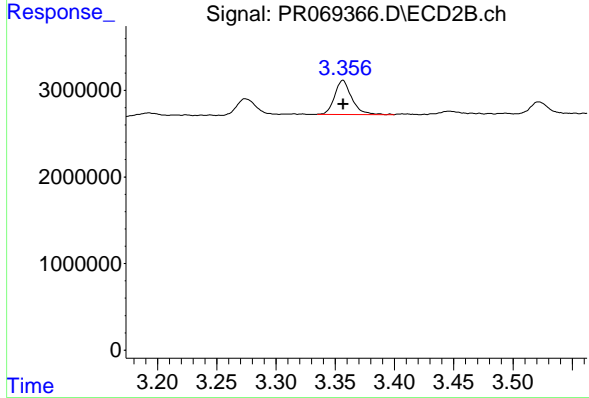
R.T.: 3.356 min  
 Delta R.T.: 0.000 min  
 Response: 3971363  
 Conc: 23.65 ng/ml



#11 AR-1232-1

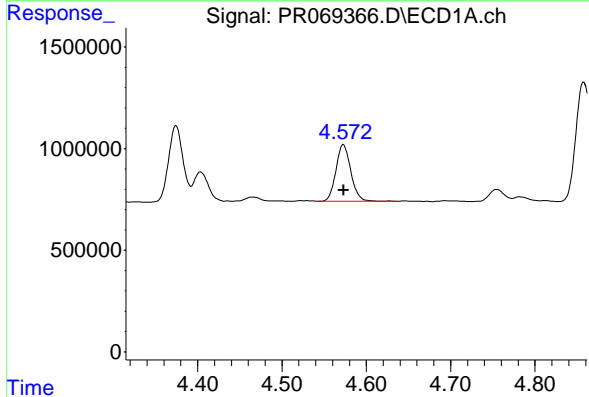
R.T.: 4.026 min  
 Delta R.T.: 0.000 min  
 Response: 685306  
 Conc: 30.74 ng/ml

Instrument : ECD\_R  
 ClientSampleId : AR12483251



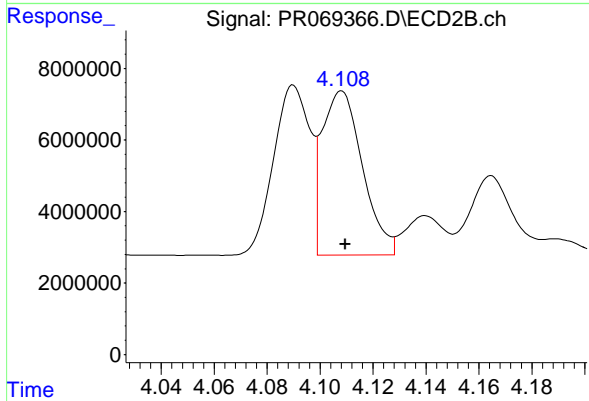
#11 AR-1232-1

R.T.: 3.356 min  
 Delta R.T.: 0.000 min  
 Response: 3971363  
 Conc: 29.60 ng/ml



#12 AR-1232-2

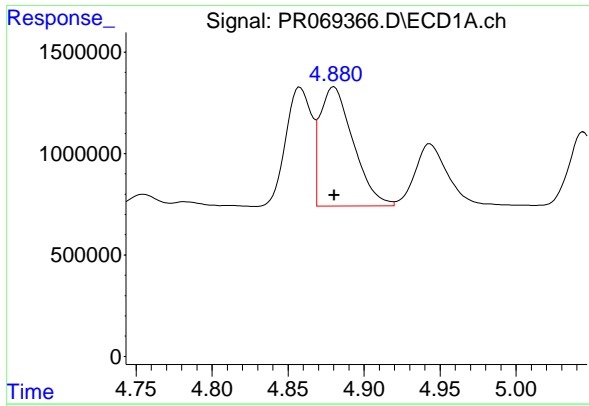
R.T.: 4.573 min  
 Delta R.T.: 0.000 min  
 Response: 3417061  
 Conc: 296.26 ng/ml



#12 AR-1232-2

R.T.: 4.108 min  
 Delta R.T.: -0.001 min  
 Response: 48567139  
 Conc: 367.91 ng/ml

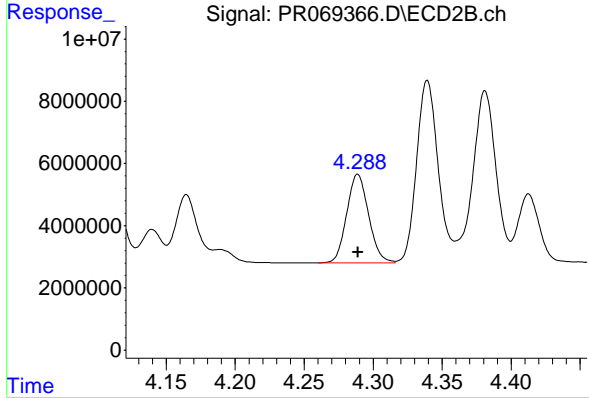




#13 AR-1232-3

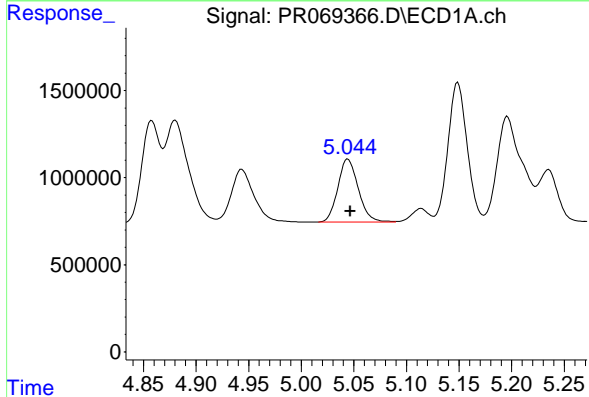
R.T.: 4.880 min  
 Delta R.T.: 0.000 min  
 Response: 8936908  
 Conc: 412.22 ng/ml

Instrument :  
 ECD\_R  
 ClientSampleId :  
 AR12483251



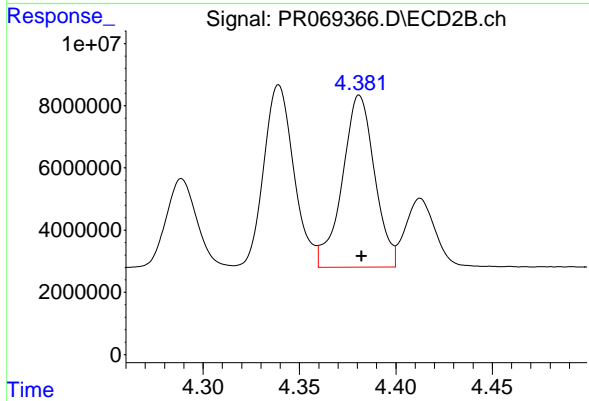
#13 AR-1232-3

R.T.: 4.289 min  
 Delta R.T.: 0.000 min  
 Response: 31469226  
 Conc: 457.57 ng/ml



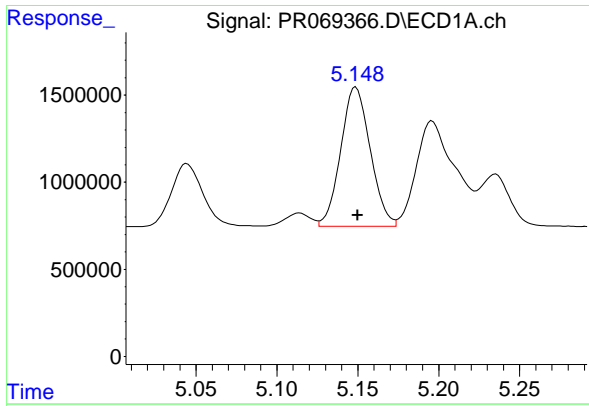
#14 AR-1232-4

R.T.: 5.044 min  
 Delta R.T.: -0.002 min  
 Response: 4870302  
 Conc: 461.25 ng/ml



#14 AR-1232-4

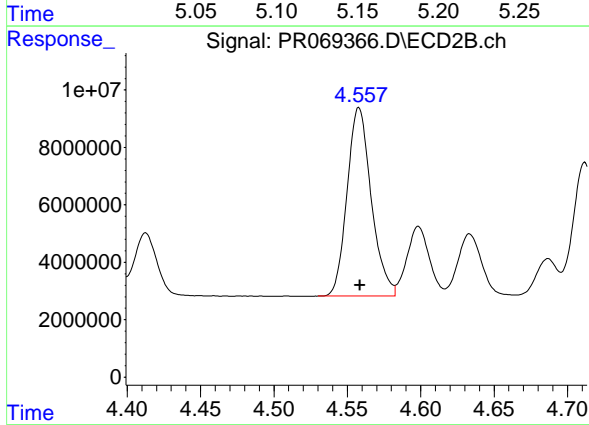
R.T.: 4.381 min  
 Delta R.T.: -0.001 min  
 Response: 64585408  
 Conc: 1084.93 ng/ml



#15 AR-1232-5

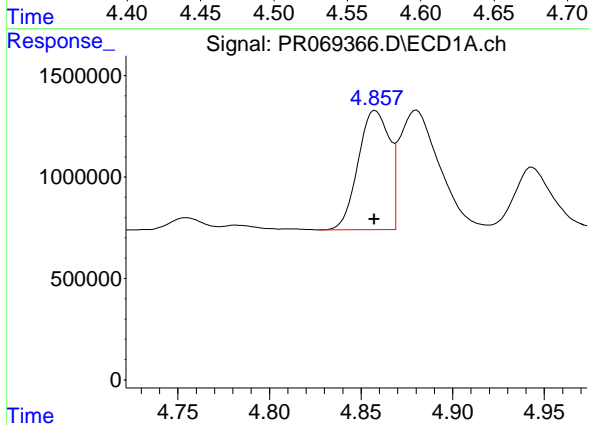
R.T.: 5.149 min  
 Delta R.T.: -0.001 min  
 Response: 10162794  
 Conc: 1367.13 ng/ml

Instrument :  
 ECD\_R  
 Client Sample Id :  
 AR12483251



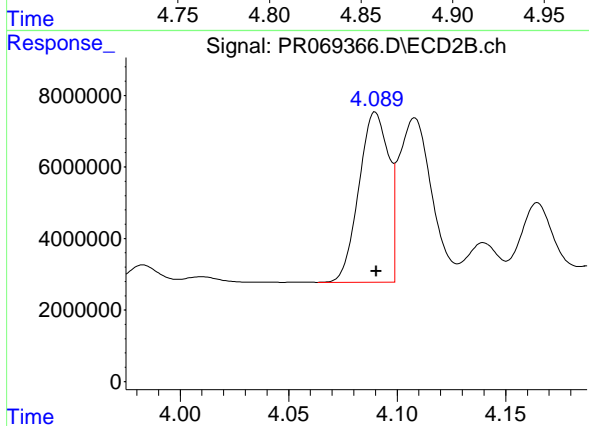
#15 AR-1232-5

R.T.: 4.558 min  
 Delta R.T.: 0.000 min  
 Response: 75215925  
 Conc: 1190.98 ng/ml



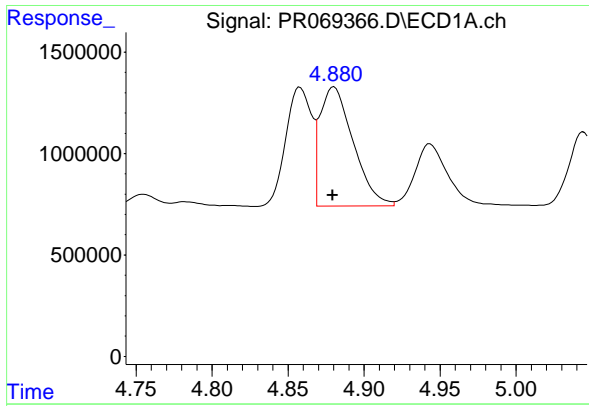
#16 AR-1242-1

R.T.: 4.858 min  
 Delta R.T.: 0.000 min  
 Response: 6947067  
 Conc: 263.02 ng/ml



#16 AR-1242-1

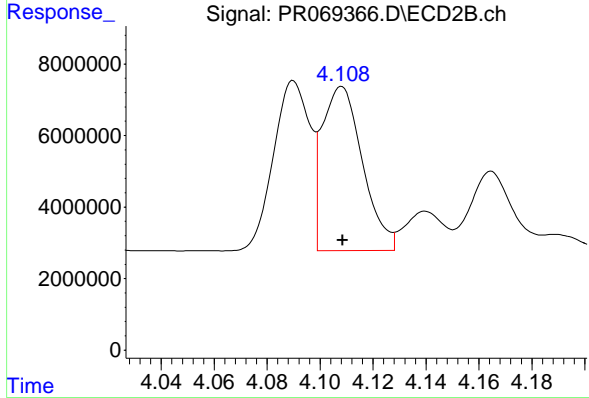
R.T.: 4.090 min  
 Delta R.T.: 0.000 min  
 Response: 45468210  
 Conc: 271.95 ng/ml



#17 AR-1242-2

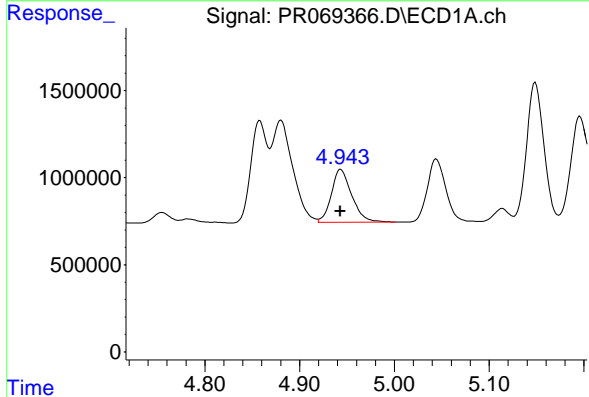
R.T.: 4.880 min  
 Delta R.T.: 0.000 min  
 Response: 8936908  
 Conc: 225.96 ng/ml

Instrument :  
 ECD\_R  
 ClientSampleId :  
 AR12483251



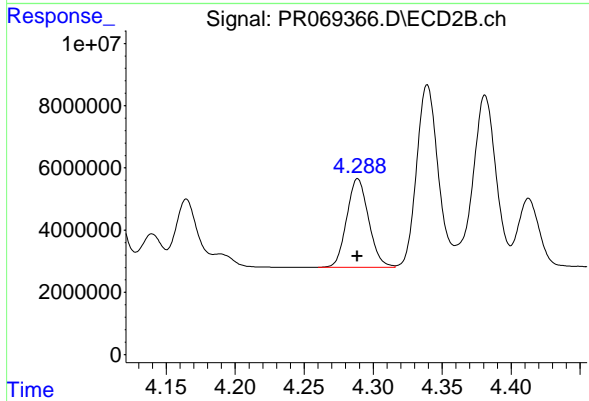
#17 AR-1242-2

R.T.: 4.108 min  
 Delta R.T.: 0.000 min  
 Response: 48567139  
 Conc: 204.40 ng/ml



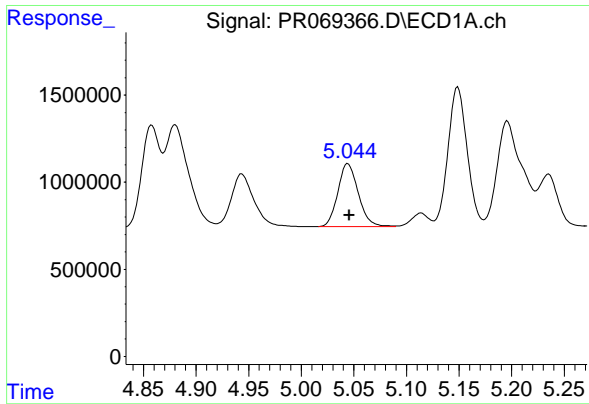
#18 AR-1242-3

R.T.: 4.943 min  
 Delta R.T.: 0.000 min  
 Response: 4534594  
 Conc: 183.79 ng/ml



#18 AR-1242-3

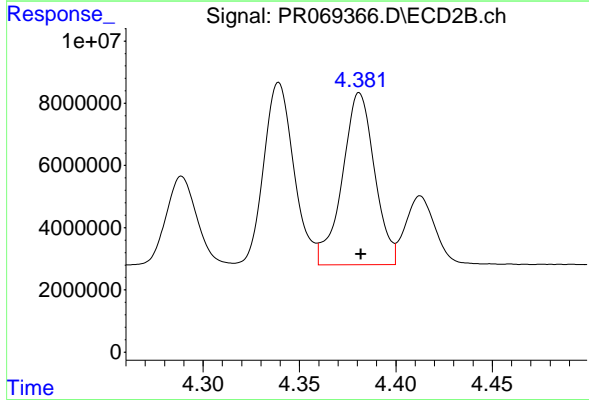
R.T.: 4.289 min  
 Delta R.T.: 0.000 min  
 Response: 31469226  
 Conc: 246.85 ng/ml



#19 AR-1242-4

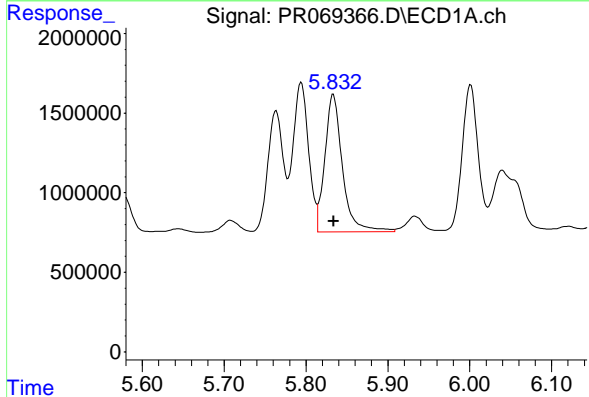
R.T.: 5.044 min  
 Delta R.T.: -0.001 min  
 Response: 4870302  
 Conc: 253.17 ng/ml

Instrument :  
 ECD\_R  
 ClientSampleId :  
 AR12483251



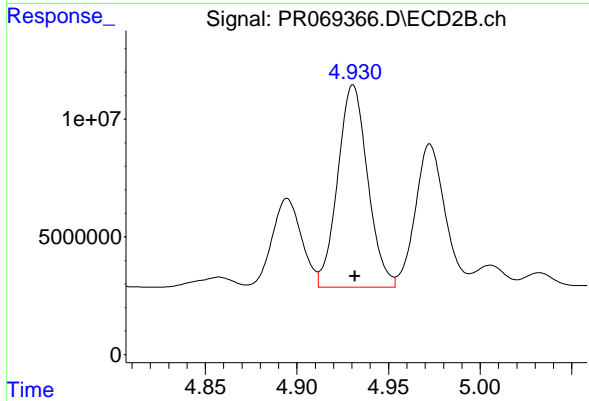
#19 AR-1242-4

R.T.: 4.381 min  
 Delta R.T.: 0.000 min  
 Response: 64585408  
 Conc: 533.05 ng/ml



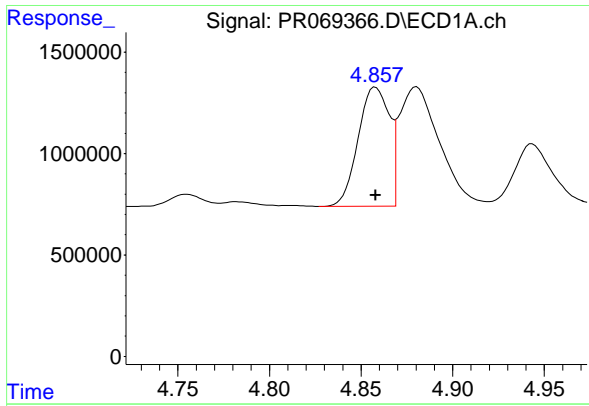
#20 AR-1242-5

R.T.: 5.833 min  
 Delta R.T.: 0.000 min  
 Response: 12882155  
 Conc: 628.27 ng/ml



#20 AR-1242-5

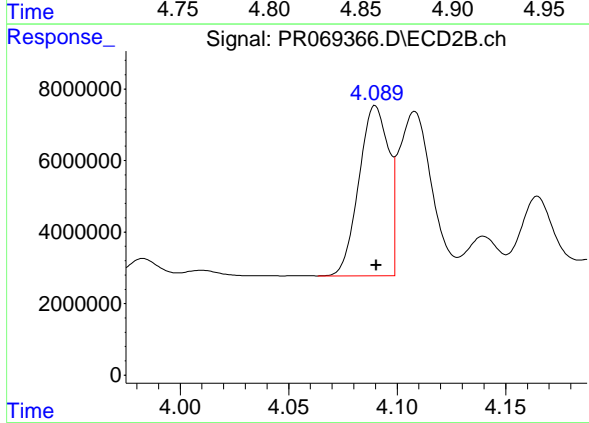
R.T.: 4.931 min  
 Delta R.T.: 0.000 min  
 Response: 97791358  
 Conc: 678.08 ng/ml



#21 AR-1248-1

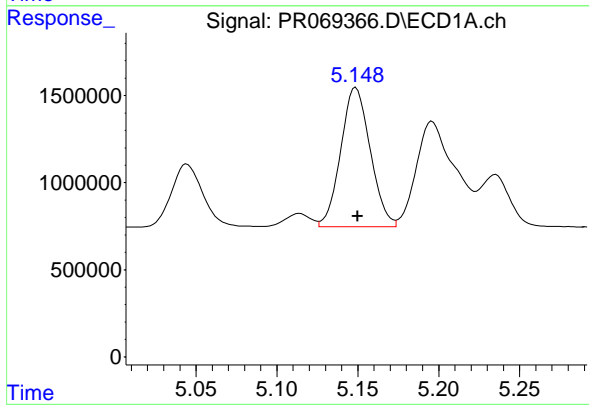
R.T.: 4.858 min  
 Delta R.T.: 0.000 min  
 Response: 6947067  
 Conc: 353.63 ng/ml

Instrument :  
 ECD\_R  
 ClientSampleId :  
 AR12483251



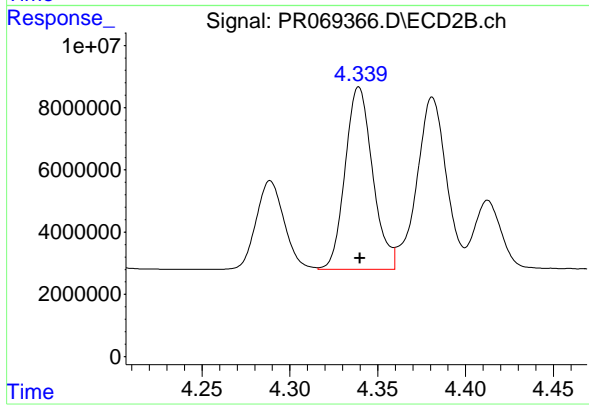
#21 AR-1248-1

R.T.: 4.090 min  
 Delta R.T.: 0.000 min  
 Response: 45468210  
 Conc: 364.27 ng/ml



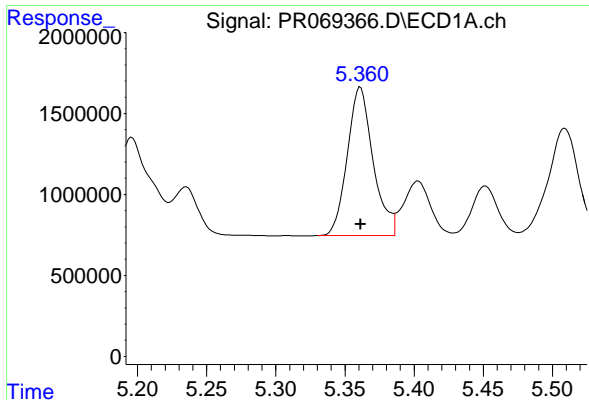
#22 AR-1248-2

R.T.: 5.149 min  
 Delta R.T.: -0.001 min  
 Response: 10162794  
 Conc: 370.08 ng/ml



#22 AR-1248-2

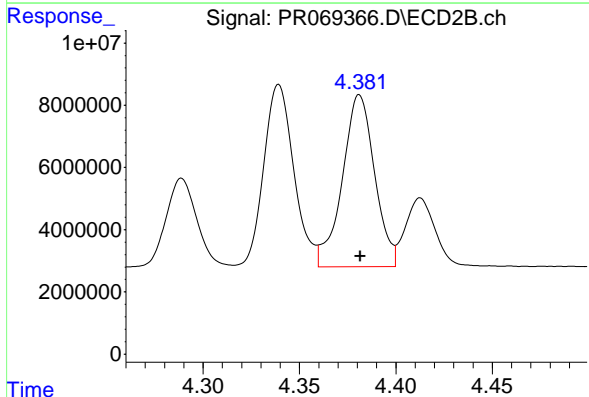
R.T.: 4.339 min  
 Delta R.T.: 0.000 min  
 Response: 63917438  
 Conc: 368.93 ng/ml



#23 AR-1248-3

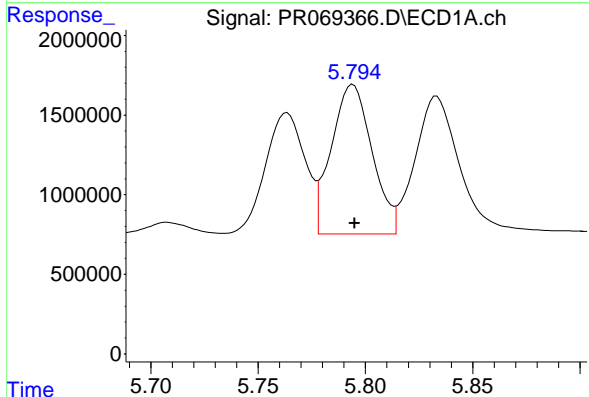
R.T.: 5.361 min  
 Delta R.T.: 0.000 min  
 Response: 11877093  
 Conc: 371.95 ng/ml

Instrument :  
 ECD\_R  
 ClientSampleId :  
 AR12483251



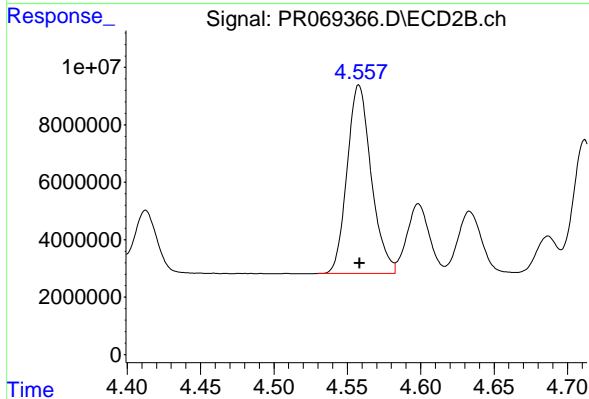
#23 AR-1248-3

R.T.: 4.381 min  
 Delta R.T.: 0.000 min  
 Response: 64585408  
 Conc: 369.15 ng/ml



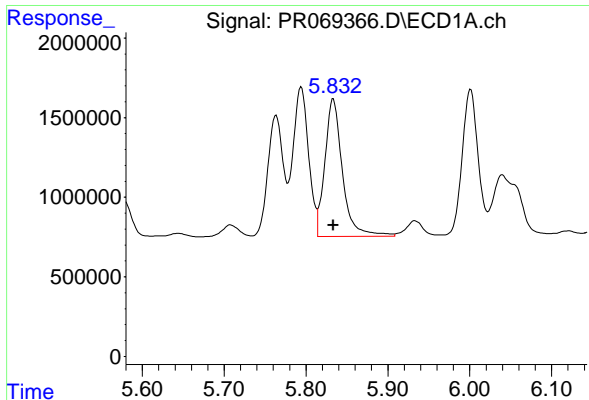
#24 AR-1248-4

R.T.: 5.794 min  
 Delta R.T.: 0.000 min  
 Response: 12413709  
 Conc: 356.08 ng/ml



#24 AR-1248-4

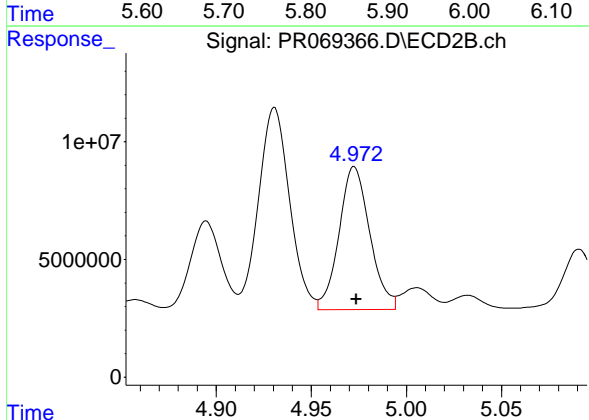
R.T.: 4.558 min  
 Delta R.T.: 0.000 min  
 Response: 75215925  
 Conc: 366.38 ng/ml



#25 AR-1248-5

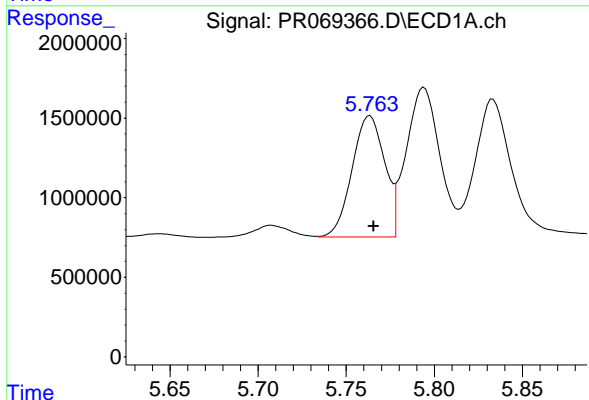
R.T.: 5.833 min  
 Delta R.T.: 0.000 min  
 Response: 12882155  
 Conc: 372.50 ng/ml

Instrument :  
 ECD\_R  
 ClientSampleId :  
 AR12483251



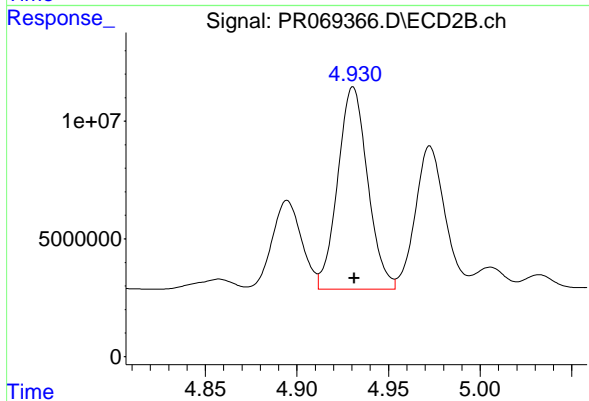
#25 AR-1248-5

R.T.: 4.973 min  
 Delta R.T.: -0.001 min  
 Response: 68277037  
 Conc: 347.21 ng/ml



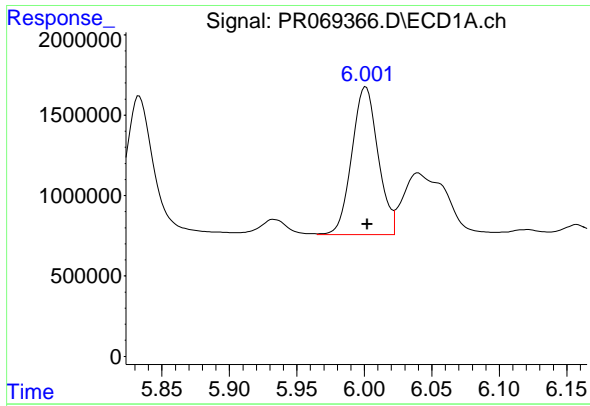
#26 AR-1254-1

R.T.: 5.763 min  
 Delta R.T.: -0.002 min  
 Response: 9814174  
 Conc: 273.08 ng/ml



#26 AR-1254-1

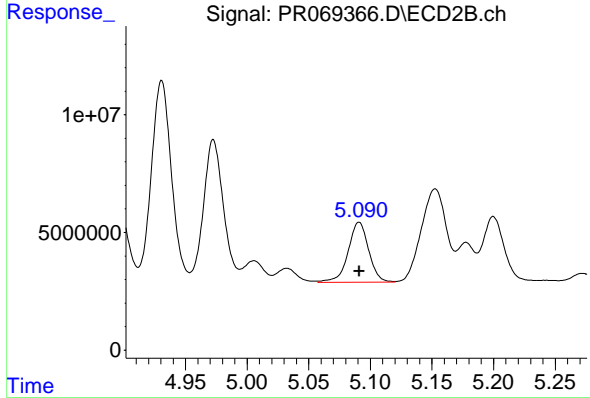
R.T.: 4.931 min  
 Delta R.T.: 0.000 min  
 Response: 97791358  
 Conc: 327.73 ng/ml



#27 AR-1254-2

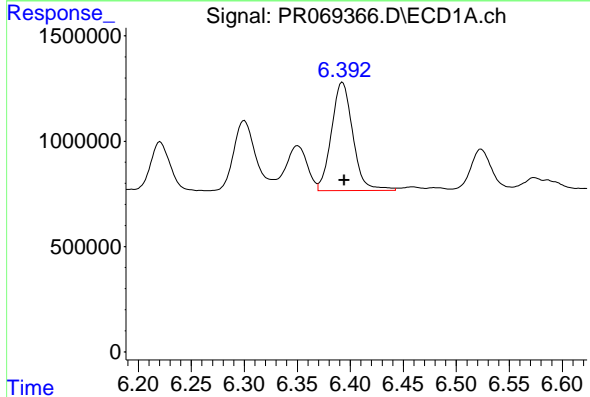
R.T.: 6.001 min  
 Delta R.T.: 0.000 min  
 Response: 12484433  
 Conc: 226.87 ng/ml

Instrument :  
 ECD\_R  
 ClientSampleId :  
 AR12483251



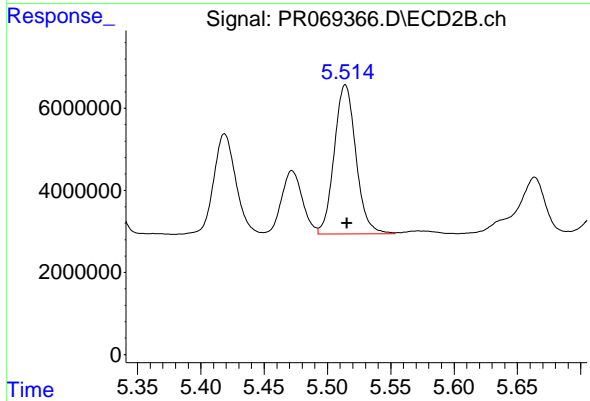
#27 AR-1254-2

R.T.: 5.091 min  
 Delta R.T.: 0.000 min  
 Response: 29605249  
 Conc: 115.59 ng/ml



#28 AR-1254-3

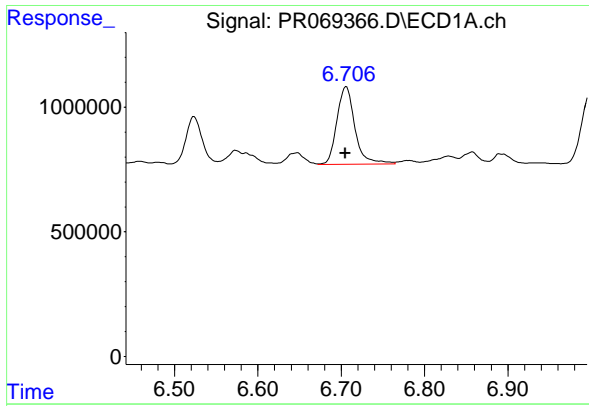
R.T.: 6.393 min  
 Delta R.T.: -0.002 min  
 Response: 7241527  
 Conc: 126.76 ng/ml



#28 AR-1254-3

R.T.: 5.514 min  
 Delta R.T.: -0.001 min  
 Response: 43463375  
 Conc: 110.01 ng/ml

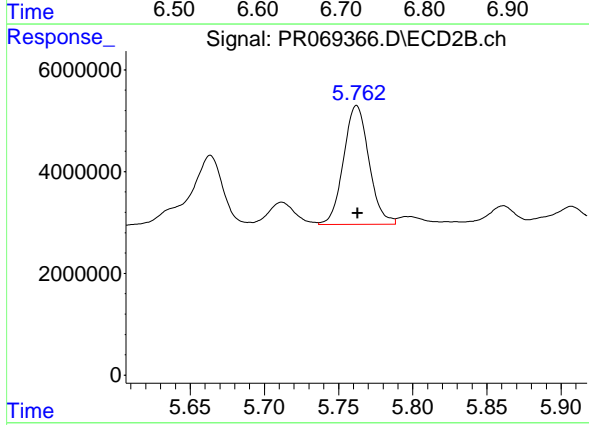




#29 AR-1254-4

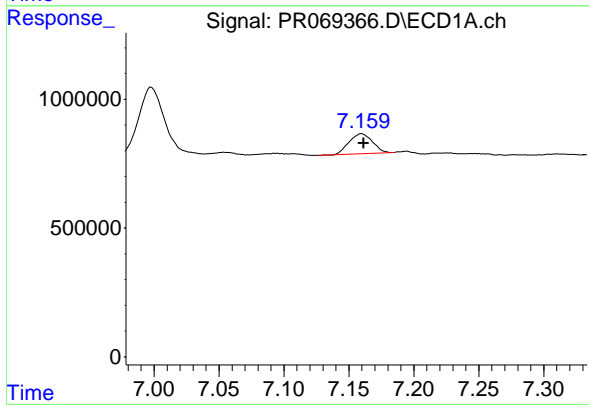
R.T.: 6.706 min  
 Delta R.T.: 0.001 min  
 Response: 4684422  
 Conc: 115.23 ng/ml

Instrument :  
 ECD\_R  
 ClientSampleId :  
 AR12483251



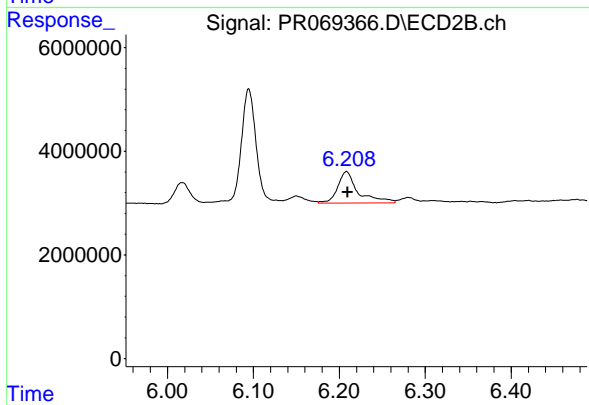
#29 AR-1254-4

R.T.: 5.762 min  
 Delta R.T.: 0.000 min  
 Response: 27818593  
 Conc: 113.59 ng/ml



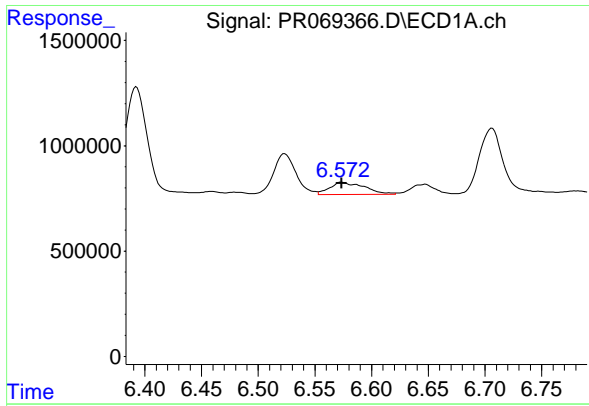
#30 AR-1254-5

R.T.: 7.160 min  
 Delta R.T.: -0.001 min  
 Response: 969956  
 Conc: 22.67 ng/ml



#30 AR-1254-5

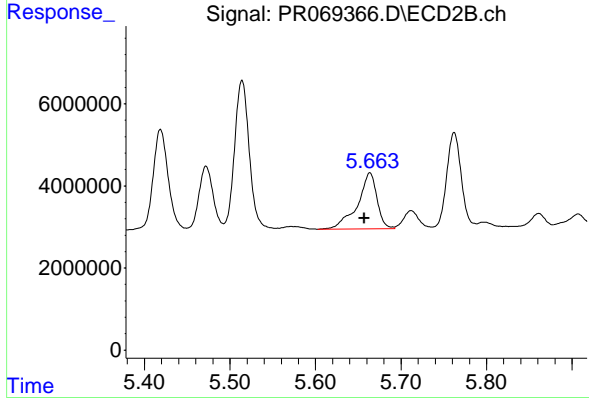
R.T.: 6.208 min  
 Delta R.T.: -0.001 min  
 Response: 10176893  
 Conc: 29.16 ng/ml



#31 AR-1260-1

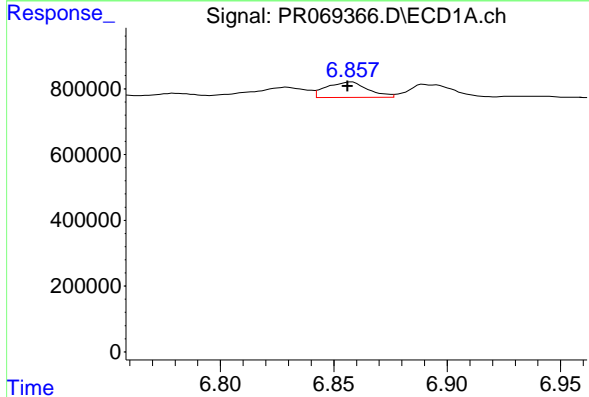
R.T.: 6.573 min  
 Delta R.T.: 0.000 min  
 Response: 1243886  
 Conc: 30.14 ng/ml

Instrument :  
 ECD\_R  
 ClientSampleId :  
 AR12483251



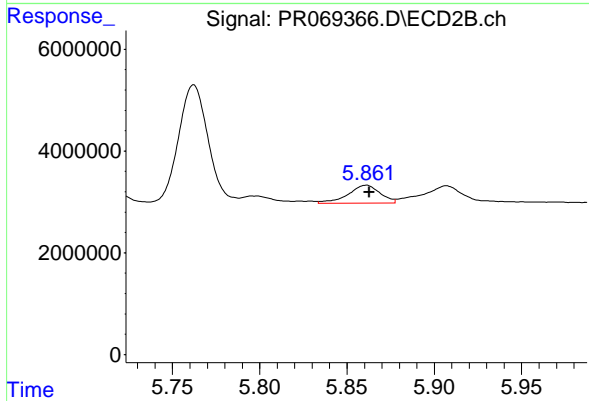
#31 AR-1260-1

R.T.: 5.664 min  
 Delta R.T.: 0.007 min  
 Response: 21673201  
 Conc: 85.55 ng/ml



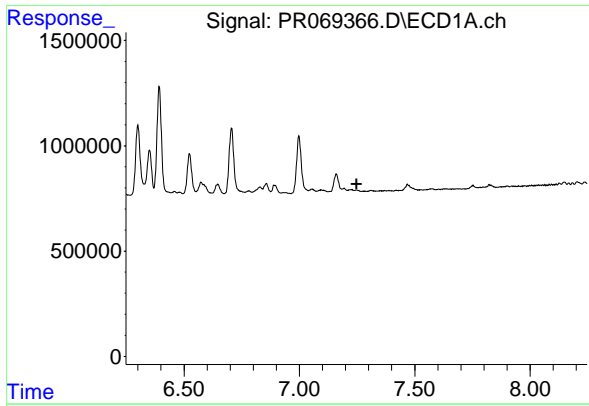
#32 AR-1260-2

R.T.: 6.858 min  
 Delta R.T.: 0.001 min  
 Response: 592806  
 Conc: 12.42 ng/ml



#32 AR-1260-2

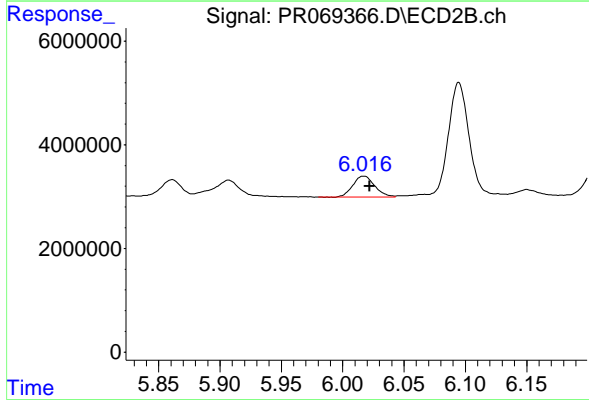
R.T.: 5.861 min  
 Delta R.T.: -0.002 min  
 Response: 4457243  
 Conc: 15.04 ng/ml



#33 AR-1260-3

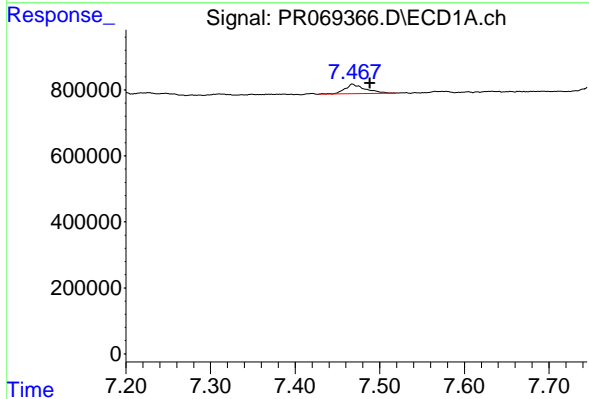
R.T.: 0.000 min  
 Exp R.T.: 7.247 min  
 Response: 0  
 Conc: N.D.

Instrument :  
 ECD\_R  
 ClientSampleId :  
 AR12483251



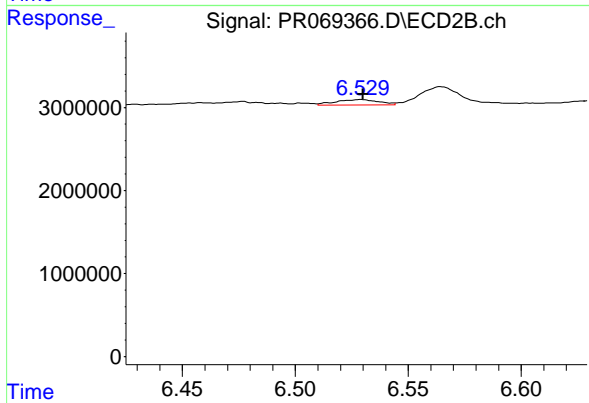
#33 AR-1260-3

R.T.: 6.017 min  
 Delta R.T.: -0.005 min  
 Response: 4984366  
 Conc: 17.59 ng/ml



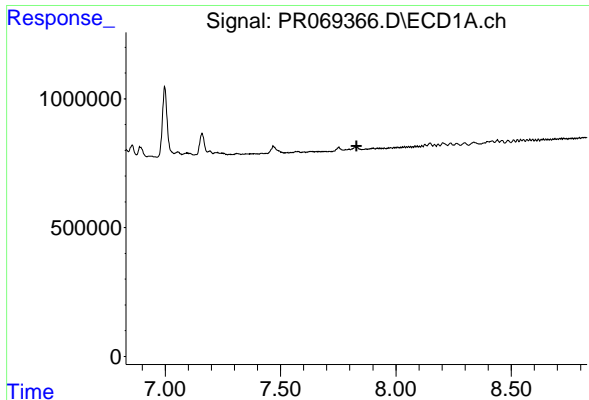
#34 AR-1260-4

R.T.: 7.468 min  
 Delta R.T.: -0.021 min  
 Response: 482814  
 Conc: 11.61 ng/ml



#34 AR-1260-4

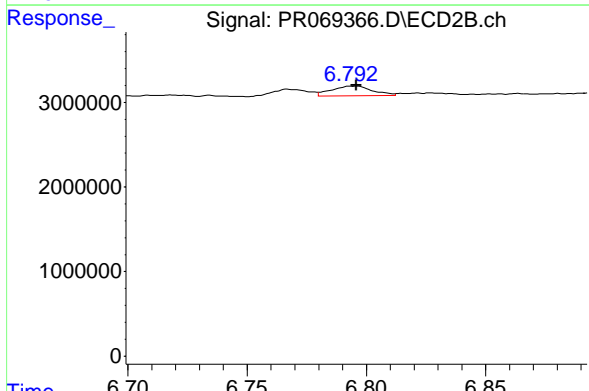
R.T.: 6.529 min  
 Delta R.T.: 0.000 min  
 Response: 885285  
 Conc: 3.67 ng/ml



#35 AR-1260-5

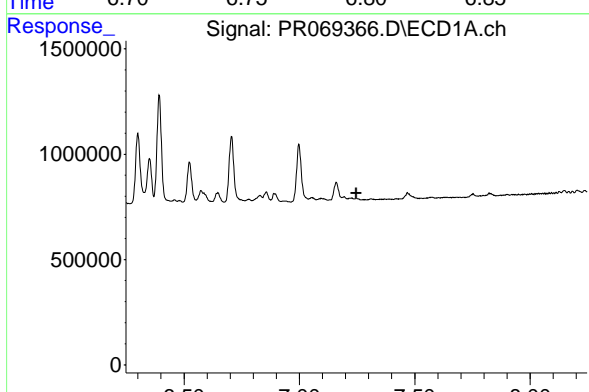
R.T.: 0.000 min  
 Exp R.T.: 7.829 min  
 Response: 0  
 Conc: N.D.

Instrument : ECD\_R  
 ClientSampleId : AR12483251



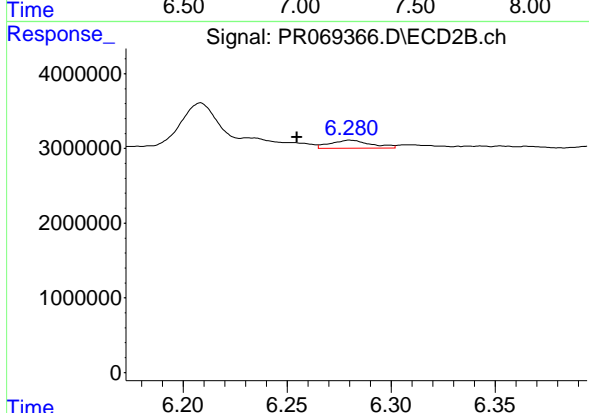
#35 AR-1260-5

R.T.: 6.795 min  
 Delta R.T.: 0.000 min  
 Response: 1366885  
 Conc: 2.40 ng/ml



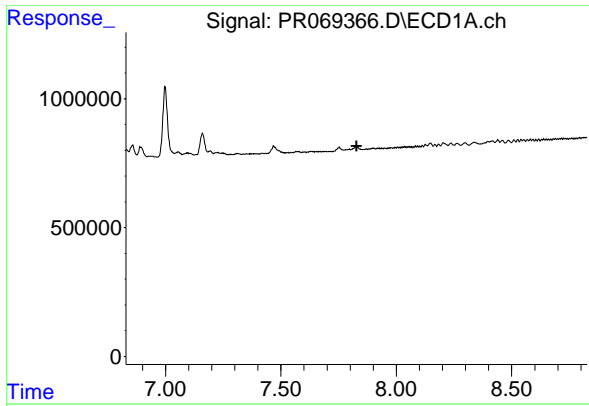
#36 AR-1262-1

R.T.: 0.000 min  
 Exp R.T.: 7.247 min  
 Response: 0  
 Conc: N.D.



#36 AR-1262-1

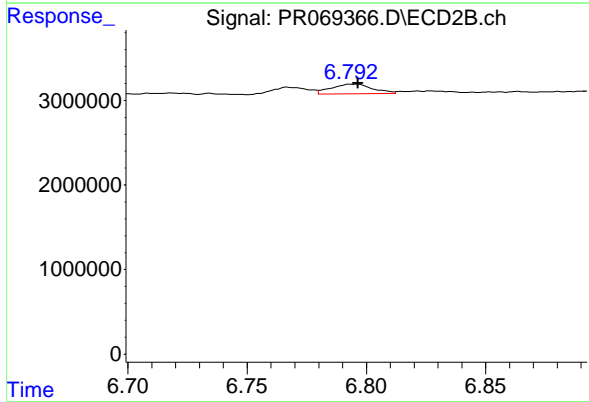
R.T.: 6.280 min  
 Delta R.T.: 0.026 min  
 Response: 1479357  
 Conc: 4.15 ng/ml



#37 AR-1262-2

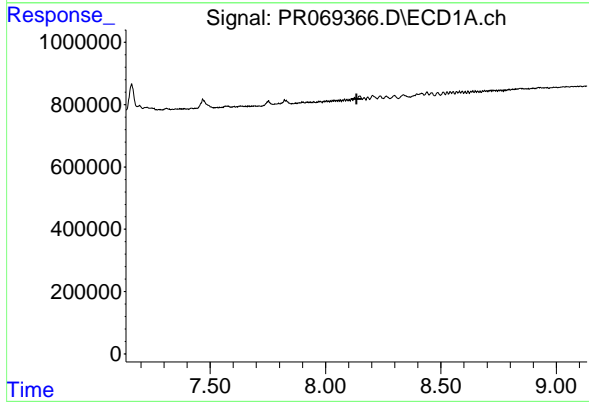
R.T.: 0.000 min  
 Exp R.T.: 7.828 min  
 Response: 0  
 Conc: N.D.

Instrument :  
 ECD\_R  
 ClientSampleId :  
 AR12483251



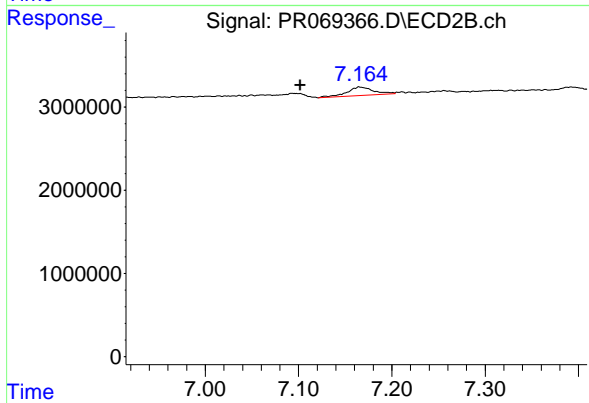
#37 AR-1262-2

R.T.: 6.795 min  
 Delta R.T.: -0.002 min  
 Response: 1366885  
 Conc: 2.15 ng/ml



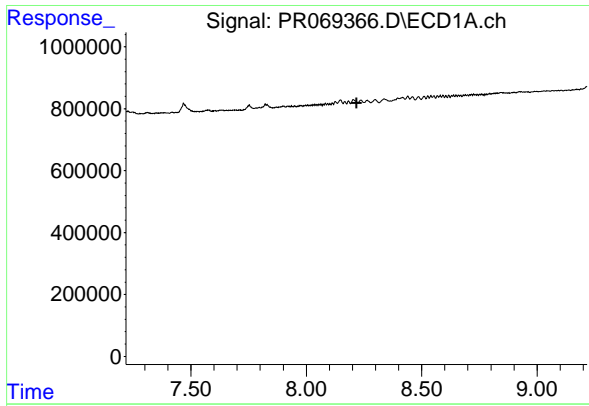
#38 AR-1262-3

R.T.: 0.000 min  
 Exp R.T.: 8.134 min  
 Response: 0  
 Conc: N.D.



#38 AR-1262-3

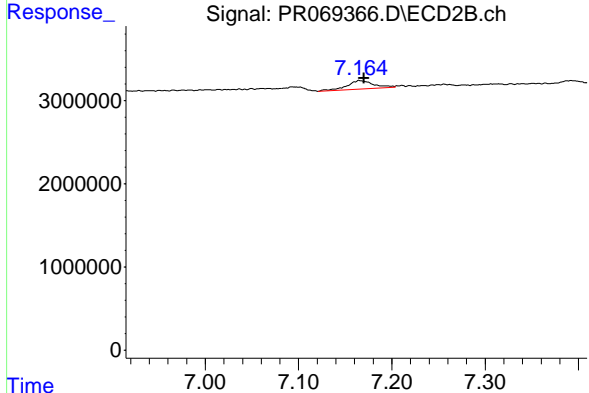
R.T.: 7.165 min  
 Delta R.T.: 0.063 min  
 Response: 2001038  
 Conc: 8.00 ng/ml



#39 AR-1262-4

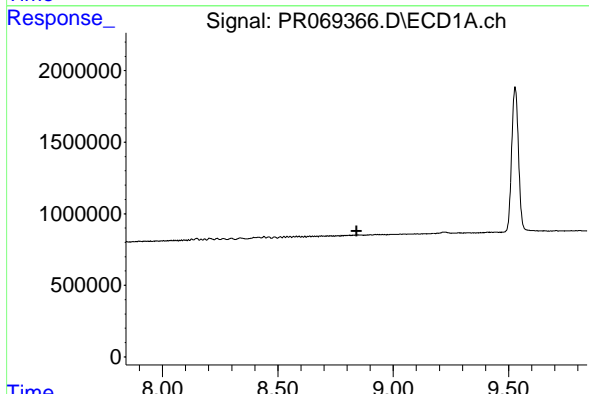
R.T.: 0.000 min  
 Exp R.T.: 8.218 min  
 Response: 0  
 Conc: N.D.

Instrument : ECD\_R  
 ClientSampleId : AR12483251



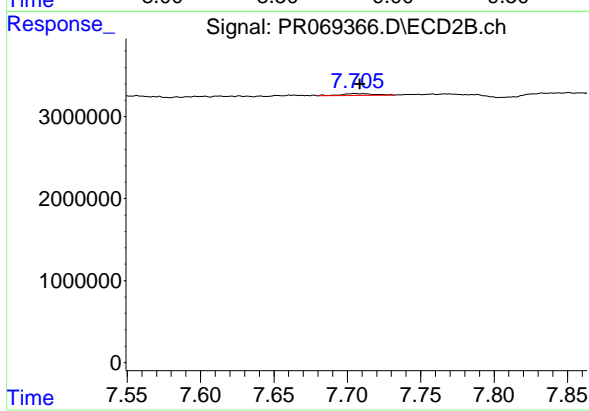
#39 AR-1262-4

R.T.: 7.165 min  
 Delta R.T.: -0.005 min  
 Response: 2001038  
 Conc: 4.21 ng/ml



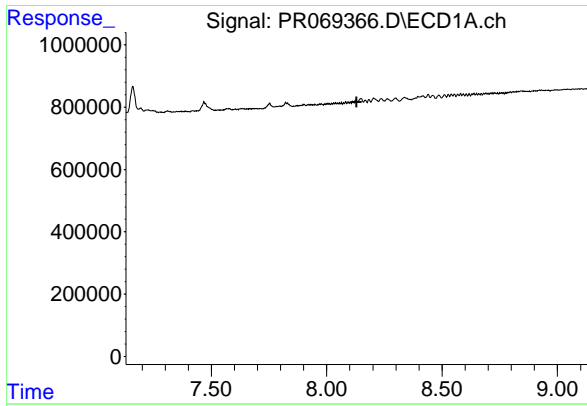
#40 AR-1262-5

R.T.: 0.000 min  
 Exp R.T.: 8.841 min  
 Response: 0  
 Conc: N.D.



#40 AR-1262-5

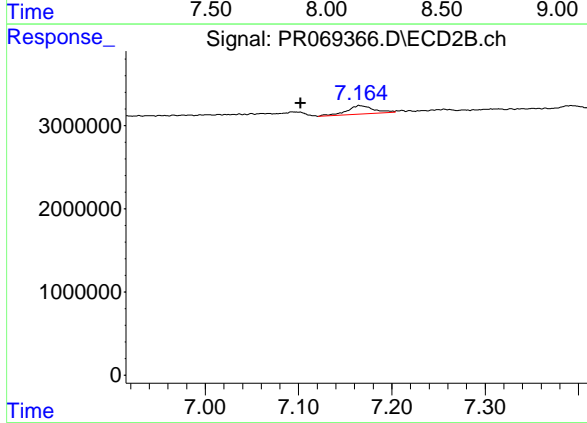
R.T.: 7.705 min  
 Delta R.T.: -0.003 min  
 Response: 341204  
 Conc: 1.57 ng/ml



#41 AR-1268-1

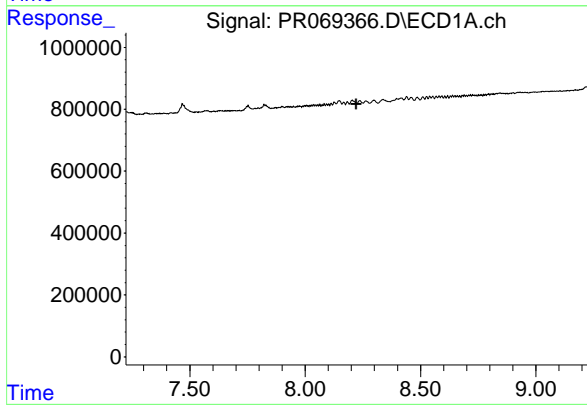
R.T.: 0.000 min  
 Exp R.T.: 8.130 min  
 Response: 0  
 Conc: N.D.

Instrument : ECD\_R  
 ClientSampleId : AR12483251



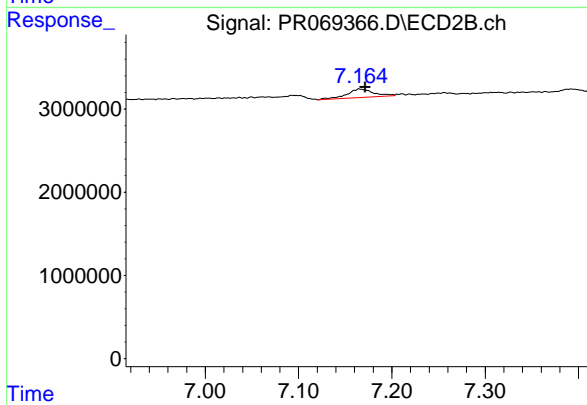
#41 AR-1268-1

R.T.: 7.165 min  
 Delta R.T.: 0.063 min  
 Response: 2001038  
 Conc: 2.73 ng/ml



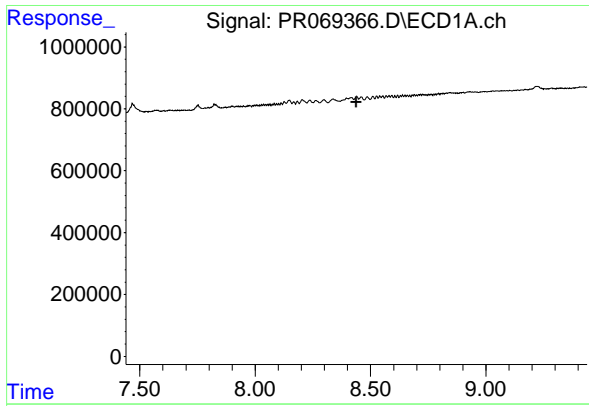
#42 AR-1268-2

R.T.: 0.000 min  
 Exp R.T.: 8.222 min  
 Response: 0  
 Conc: N.D.



#42 AR-1268-2

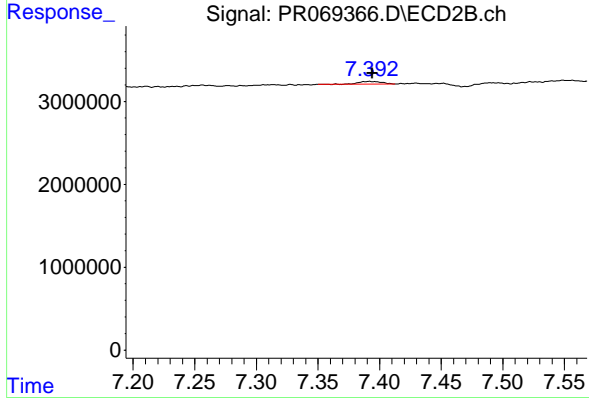
R.T.: 7.165 min  
 Delta R.T.: -0.006 min  
 Response: 2001038  
 Conc: 2.92 ng/ml



#43 AR-1268-3

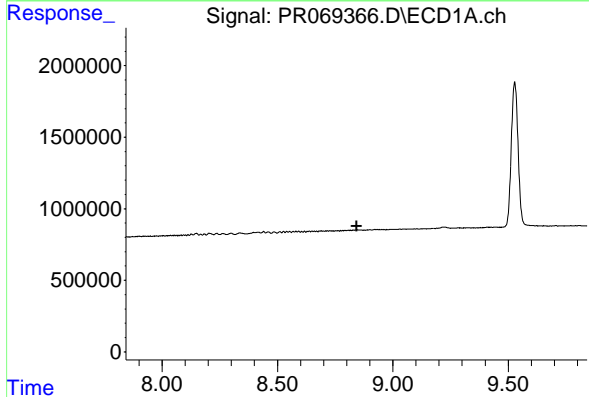
R.T.: 0.000 min  
 Exp R.T.: 8.438 min  
 Response: 0  
 Conc: N.D.

Instrument : ECD\_R  
 ClientSampleId : AR12483251



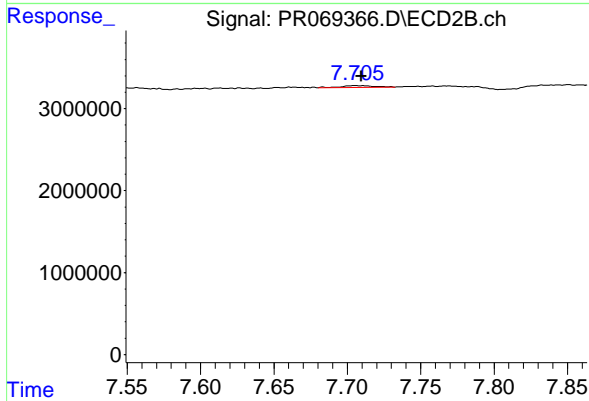
#43 AR-1268-3

R.T.: 7.392 min  
 Delta R.T.: -0.002 min  
 Response: 412178  
 Conc: 0.72 ng/ml



#44 AR-1268-4

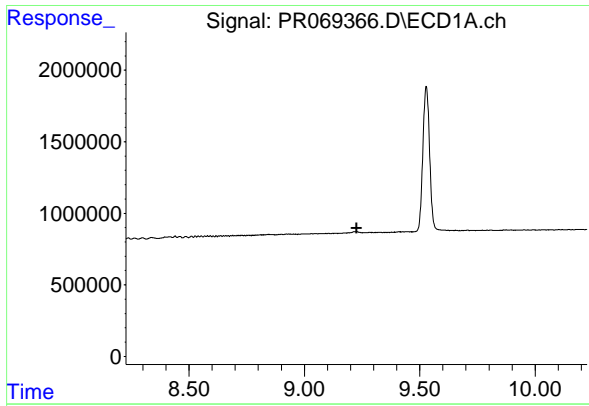
R.T.: 0.000 min  
 Exp R.T.: 8.843 min  
 Response: 0  
 Conc: N.D.



#44 AR-1268-4

R.T.: 7.705 min  
 Delta R.T.: -0.004 min  
 Response: 341204  
 Conc: 1.38 ng/ml

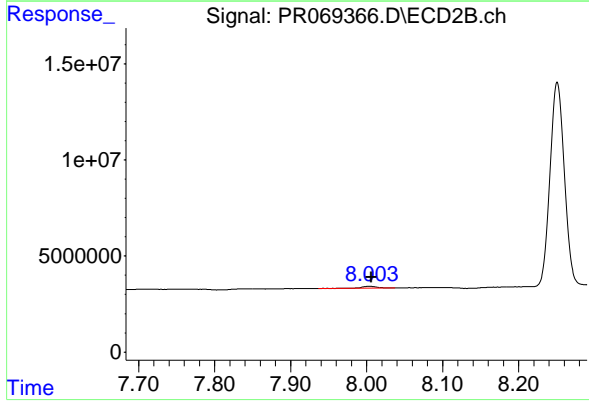




#45 AR-1268-5

R.T.: 0.000 min  
 Exp R.T.: 9.226 min  
 Response: 0  
 Conc: N.D.

Instrument :  
 ECD\_R  
 ClientSampleId :  
 AR12483251



#45 AR-1268-5

R.T.: 8.004 min  
 Delta R.T.: -0.002 min  
 Response: 1485425  
 Conc: 0.81 ng/ml