

Data Path : Z:\pestpcbsrv\HPCHEM1\ECD_R\Data\PR120924\
 Data File : PR069415.D
 Signal(s) : Signal #1: ECD1A.ch Signal #2: ECD2B.ch
 Acq On : 09 Dec 2024 18:32
 Operator : AJ\MA
 Sample : P5153-12
 Misc :
 ALS Vial : 44 Sample Multiplier: 1

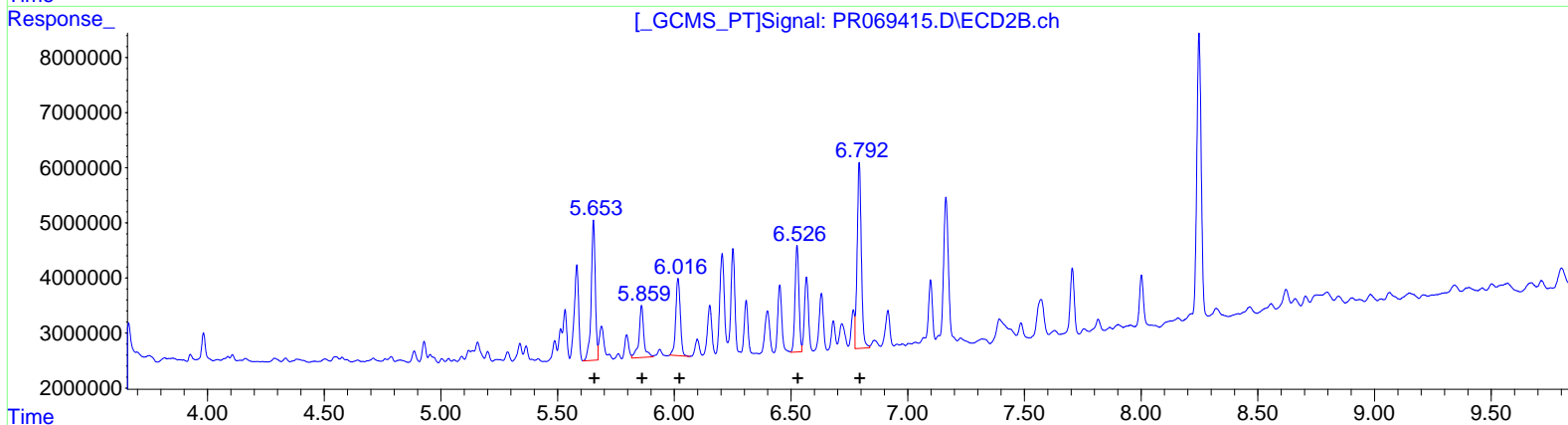
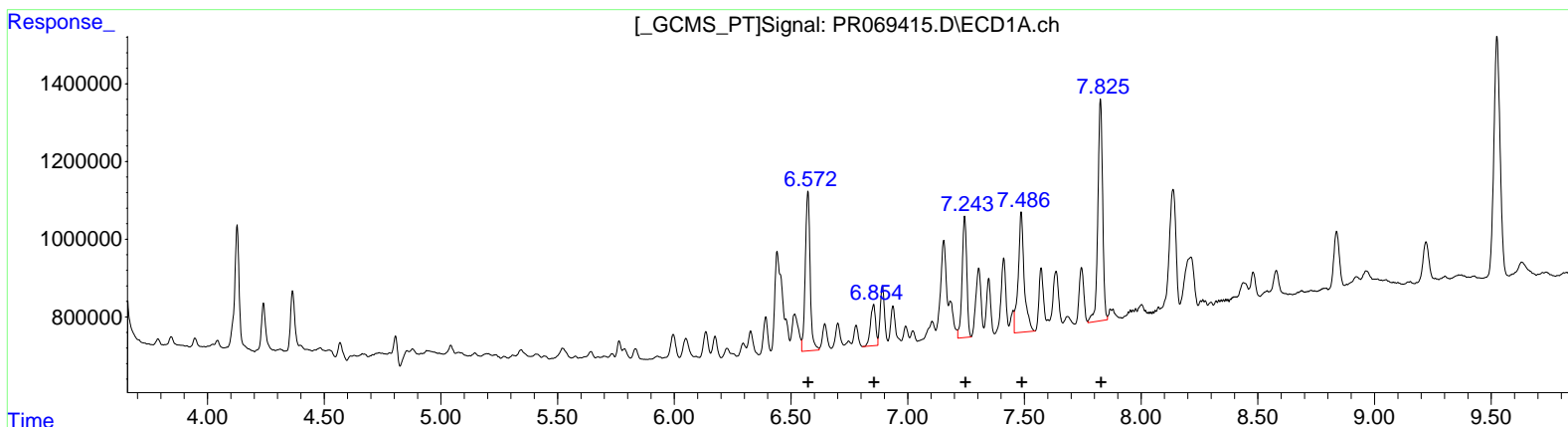
Instrument :
 ECD_R
 ClientSampleId :
 E28P9

Manual Integrations APPROVED

Reviewed By : Yogesh Patel 12/10/2024
 Supervised By : Ankita Jodhani 12/10/2024

Integration File signal 1: autoint1.e
 Integration File signal 2: autoint2.e
 Quant Time: Dec 10 07:11:46 2024
 Quant Method : Z:\pestpcbsrv\HPCHEM1\ECD_R\Method\PR112124CLP.M
 Quant Title : GC EXTRACTABLES
 QLast Update : Fri Nov 22 04:30:58 2024
 Response via : Initial Calibration
 Integrator: ChemStation

Volume Inj. : 1 µl
 Signal #1 Phase : ZB MR1 Signal #2 Phase: ZB MR2
 Signal #1 Info : 30Mx0.32mmx 0.5µm Signal #2 Info : 30M x 0.32mm x 0.25µm



QEdit

(31) AR-1260-1 (L7)		
R.T.	Response	Conc
6.57	5931585	143.72
6.85	1600285	33.54
7.24	4306871	117.56
7.49	5518512	132.67
7.83	8149050	106.81

(31) AR-1260-1 #2 (L7)		
R.T.	Response	Conc
5.65	30901249	121.97
5.86	13751961	46.40
6.02	19082069	67.33
6.53	22370728	92.62
6.79	42312157	74.18

Data Path : Z:\pestpcbsrv\HPCHEM1\ECD_R\Data\PR120924\
 Data File : PR069415.D
 Signal(s) : Signal #1: ECD1A.ch Signal #2: ECD2B.ch
 Acq On : 09 Dec 2024 18:32
 Operator : AJ\MA
 Sample : P5153-12
 Misc :
 ALS Vial : 44 Sample Multiplier: 1

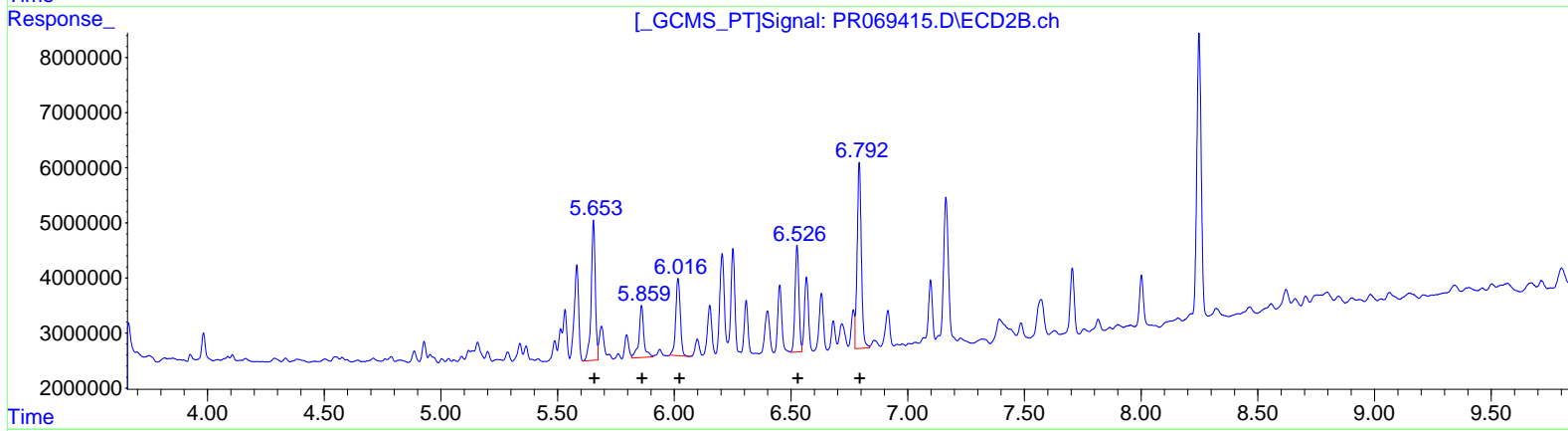
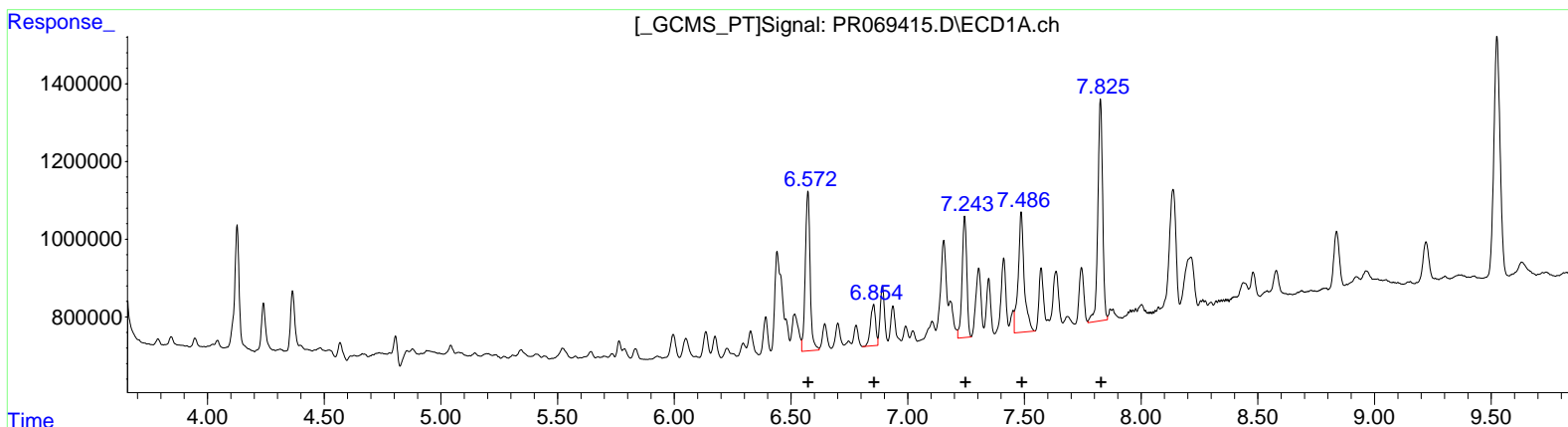
Instrument :
 ECD_R
 ClientSampleId :
 E28P9

Manual Integrations APPROVED

Reviewed By :Yogesh Patel 12/10/2024
 Supervised By :Ankita Jodhani 12/10/2024

Integration File signal 1: autoint1.e
 Integration File signal 2: autoint2.e
 Quant Time: Dec 10 02:07:10 2024
 Quant Method : Z:\pestpcbsrv\HPCHEM1\ECD_R\Method\PR112124CLP.M
 Quant Title : GC EXTRACTABLES
 QLast Update : Fri Nov 22 04:30:58 2024
 Response via : Initial Calibration
 Integrator: ChemStation

Volume Inj. : 1 µl
 Signal #1 Phase : ZB MR1 Signal #2 Phase: ZB MR2
 Signal #1 Info : 30Mx0.32mmx 0.5µm Signal #2 Info : 30M x 0.32mm x 0.25µm



(31) AR-1260-1 (L7)

R.T.	Response	Conc
6.57	5931585	143.72
6.85	1600285	33.54
7.24	4306871	117.56
7.49	5518512	132.67
7.83	8149050	106.81

(31) AR-1260-1 #2 (L7)

R.T.	Response	Conc
5.65	30901249	121.97
5.86	13751961	46.40
6.02	19082069	67.33
6.53	22370728	92.62
6.79	42312157	74.18