

Data Path : Z:\pestpcbsrv\HPCHEM1\ECD_R\Data\PR121124\
 Data File : PR069491.D
 Signal(s) : Signal #1: ECD1A.ch Signal #2: ECD2B.ch
 Acq On : 12 Dec 2024 01:29
 Operator : AJ\MA
 Sample : P5232-17
 Misc :
 ALS Vial : 49 Sample Multiplier: 1

Instrument :
 ECD_R
 ClientSampleId :

Integration File signal 1: autoint1.e
 Integration File signal 2: autoint2.e
 Quant Time: Dec 12 02:01:31 2024
 Quant Method : Z:\pestpcbsrv\HPCHEM1\ECD_R\Method\PR12124CLP.M
 Quant Title : GC EXTRACTABLES
 QLast Update : Fri Nov 22 04:30:58 2024
 Response via : Initial Calibration
 Integrator: ChemStation

Volume Inj. : 1 µl
 Signal #1 Phase : ZB MR1 Signal #2 Phase: ZB MR2
 Signal #1 Info : 30Mx0.32mmx 0.5µm Signal #2 Info : 30M x 0.32mm x 0.25µm

Compound	RT#1	RT#2	Resp#1	Resp#2	ng/ml	ng/ml
System Monitoring Compounds						
1) SA Tetrachlo...	3.636	2.968	14948085	89223768	14.290	14.331
2) SA Decachlor...	9.528	8.250	6342414	36956576	11.809	9.805
Target Compounds						
3) L1 AR-1016-1	4.856	4.089	7229393	39700920	226.163	198.318
4) L1 AR-1016-2	4.878	4.107	13908464	72019626	293.627	252.926
5) L1 AR-1016-3	4.942	4.287	6225651	30019145	211.393	196.475
6) L1 AR-1016-4	5.044	4.338	5133462	45753165	220.418	369.627 #
7) L1 AR-1016-5	5.360	4.557	8932786	56607424	372.787	373.988
8) L2 AR-1221-1	3.850	3.188	560081	3674701	47.516	49.049
9) L2 AR-1221-2	3.947	3.277	723102	5266816	97.511	99.506
10) L2 AR-1221-3	4.024	3.355	3746781	20140790	134.590	119.962
11) L3 AR-1232-1	4.024	3.355	3746781	20140790	168.042	150.106
12) L3 AR-1232-2	4.572	4.107	4380704	72019626	379.803	545.565 #
13) L3 AR-1232-3	4.878	4.287	13908464	30019145	641.531	436.483 #
14) L3 AR-1232-4	5.044	4.379	5133462	48347845	486.177	812.163 #
15) L3 AR-1232-5	5.148	4.557	8012120	56607424	1077.814	896.328
16) L4 AR-1242-1	4.856	4.089	7229393	39700920	273.712	237.454
17) L4 AR-1242-2	4.878	4.107	13908464	72019626	351.666	303.105
18) L4 AR-1242-3	4.942	4.287	6225651	30019145	252.324	235.475
19) L4 AR-1242-4	5.044	4.379	5133462	48347845	266.845	399.033 #
20) L4 AR-1242-5	5.834	4.929	14711161	108.4E6	717.475	751.529
21) L5 AR-1248-1	4.856	4.089	7229393	39700920	368.004	318.068
22) L5 AR-1248-2	5.148	4.338	8012120	45753165	291.759	264.086
23) L5 AR-1248-3	5.360	4.379	8932786	48347845	279.742	276.341
24) L5 AR-1248-4	5.793	4.557	7391436	56607424	212.021	275.737 #
25) L5 AR-1248-5	5.834	4.971	14711161	69785617	425.392	354.887
26) L6 AR-1254-1	5.763	4.929	14248014	108.4E6	396.455	363.232
27) L6 AR-1254-2	6.000	5.089	24086819	71584963	437.704	279.503 #
28) L6 AR-1254-3	6.393	5.513	28404116	191.9E6	497.194	485.634
29) L6 AR-1254-4	6.703	5.761	7620580	32997731	187.459	134.743 #
30) L6 AR-1254-5	7.158	6.207	22153379	121.0E6	517.702	346.694 #
31) L7 AR-1260-1	6.572	5.655	13919984	122.5E6	337.280	483.606 #
32) L7 AR-1260-2	6.856	5.860	15815672	101.6E6	331.462	342.775
33) L7 AR-1260-3	7.245	6.018	11565095	77905030	315.676	274.889
34) L7 AR-1260-4	7.487	6.527	17168057	65772906	412.744	272.328 #
35) L7 AR-1260-5	7.828	6.793	22771128	137.4E6	298.457	240.967
36) L8 AR-1262-1	7.245	6.252	11565095	69605219	216.821	195.134
37) L8 AR-1262-2	7.828	6.793	22771128	137.4E6	262.348	216.483
38) L8 AR-1262-3	8.139	7.099	14035966	29634826	238.450	118.546 #
39) L8 AR-1262-4	8.218	7.165	3616462	110.3E6	79.675	232.390 #
40) L8 AR-1262-5	8.839	7.707	5383742	31846855	182.172	146.080
41) L9 AR-1268-1	8.139	7.099	14035966	29634826	137.317	40.364 #

Data Path : Z:\pestpcbsrv\HPCHEM1\ECD_R\Data\PR121124\
 Data File : PR069491.D
 Signal(s) : Signal #1: ECD1A.ch Signal #2: ECD2B.ch
 Acq On : 12 Dec 2024 01:29
 Operator : AJ\MA
 Sample : P5232-17
 Misc :
 ALS Vial : 49 Sample Multiplier: 1

Instrument :
 ECD_R
 ClientSampleId :

Integration File signal 1: autoint1.e
 Integration File signal 2: autoint2.e
 Quant Time: Dec 12 02:01:31 2024
 Quant Method : Z:\pestpcbsrv\HPCHEM1\ECD_R\Method\PR12124CLP.M
 Quant Title : GC EXTRACTABLES
 QLast Update : Fri Nov 22 04:30:58 2024
 Response via : Initial Calibration
 Integrator: ChemStation

Volume Inj. : 1 µl
 Signal #1 Phase : ZB MR1 Signal #2 Phase: ZB MR2
 Signal #1 Info : 30Mx0.32mmx 0.5µm Signal #2 Info : 30M x 0.32mm x 0.25µm

	Compound	RT#1	RT#2	Resp#1	Resp#2	ng/ml	ng/ml
42)	L9 AR-1268-2	8.218	7.165	3616462	110.3E6	39.331	161.210 #
43)	L9 AR-1268-3	8.451	7.415	1024158	28707694	13.294	49.964 #
44)	L9 AR-1268-4	8.839	7.707	5383742	31846855	163.656	128.827
45)	L9 AR-1268-5	9.221	8.002	2155358	10986755	8.952	6.006 #

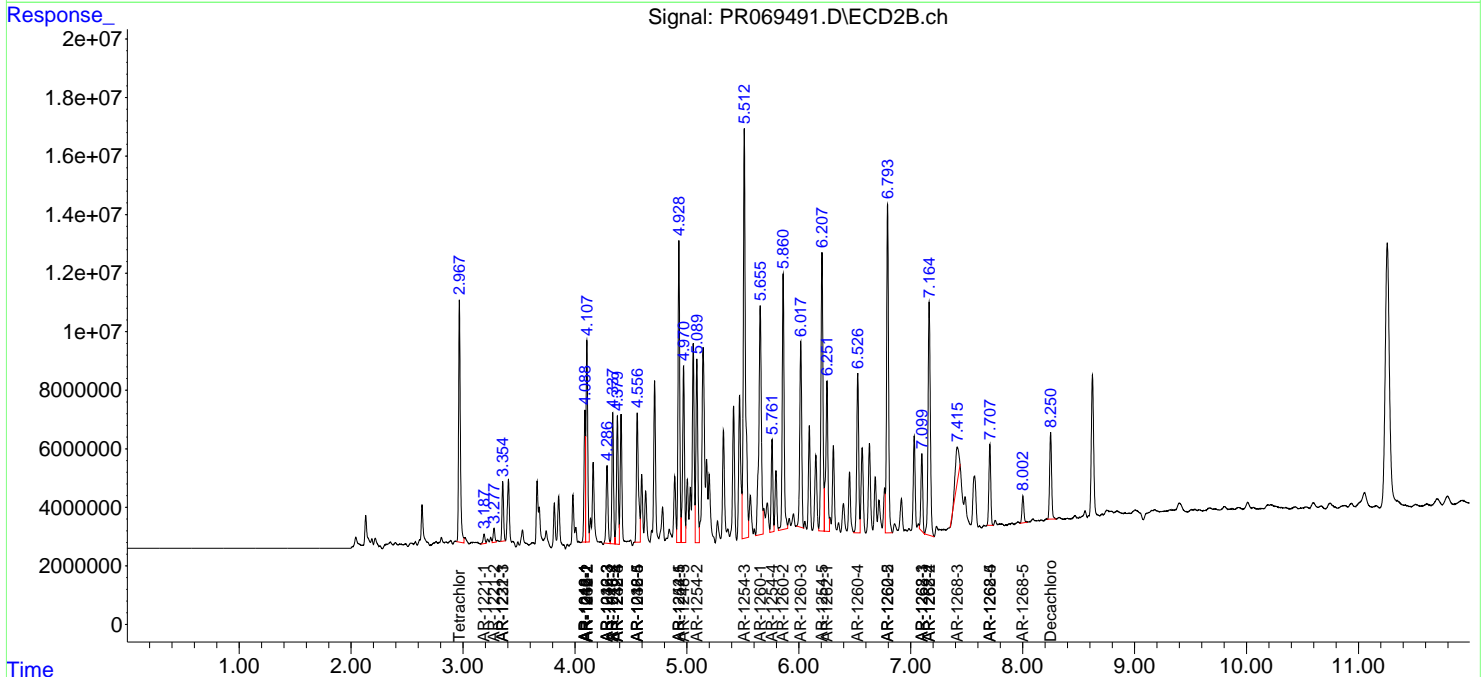
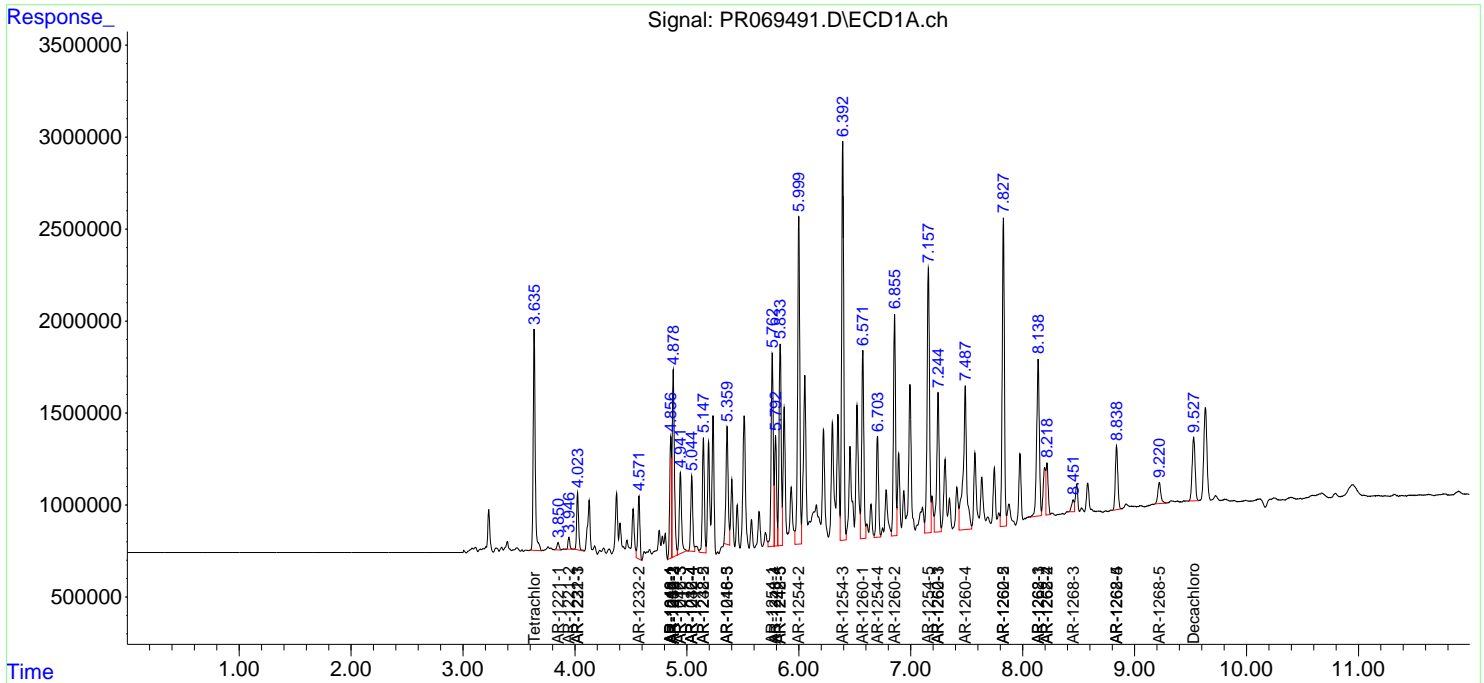
(f)=RT Delta > 1/2 Window (#)=Amounts differ by > 25% (m)=manual int.

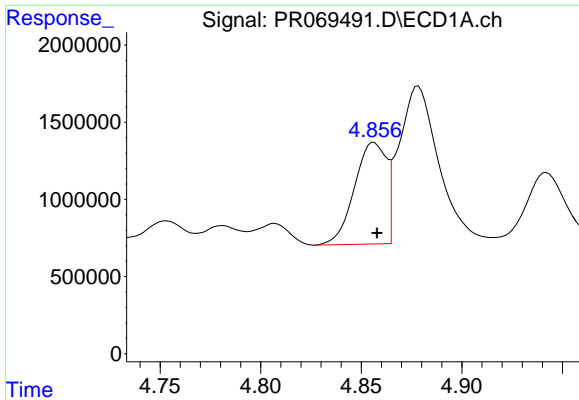
Data Path : Z:\pestpcbsrv\HPCHEM1\ECD_R\Data\PR121124\
 Data File : PR069491.D
 Signal(s) : Signal #1: ECD1A.ch Signal #2: ECD2B.ch
 Acq On : 12 Dec 2024 01:29
 Operator : AJ\MA
 Sample : P5232-17
 Misc :
 ALS Vial : 49 Sample Multiplier: 1

Instrument :
 ECD_R
 ClientSampleId :

Integration File signal 1: autoint1.e
 Integration File signal 2: autoint2.e
 Quant Time: Dec 12 02:01:31 2024
 Quant Method : Z:\pestpcbsrv\HPCHEM1\ECD_R\Method\PR12124CLP.M
 Quant Title : GC EXTRACTABLES
 QLast Update : Fri Nov 22 04:30:58 2024
 Response via : Initial Calibration
 Integrator: ChemStation

Volume Inj. : 1 µl
 Signal #1 Phase : ZB MR1 Signal #2 Phase: ZB MR2
 Signal #1 Info : 30Mx0.32mmx 0.5µm Signal #2 Info : 30M x 0.32mm x 0.25µm

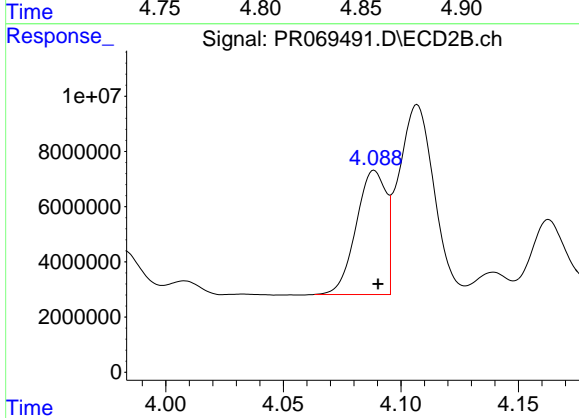




#3 AR-1016-1

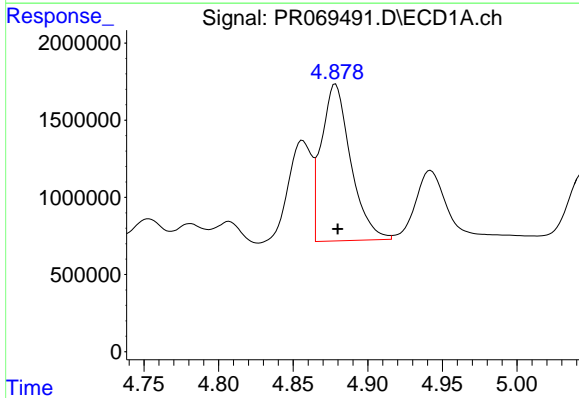
R.T.: 4.856 min
 Delta R.T.: -0.002 min
 Response: 7229393
 Conc: 226.16 ng/ml

Instrument :
 ECD_R
 ClientSampleId :



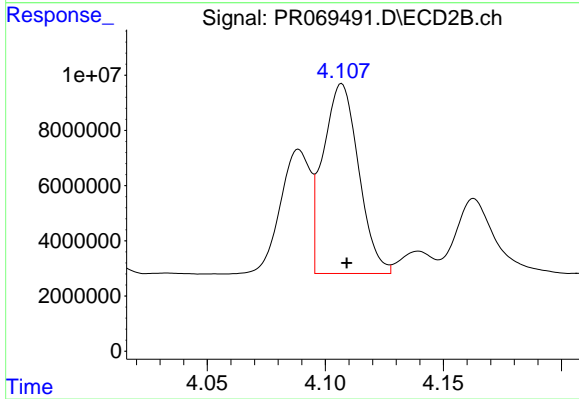
#3 AR-1016-1

R.T.: 4.089 min
 Delta R.T.: -0.002 min
 Response: 39700920
 Conc: 198.32 ng/ml



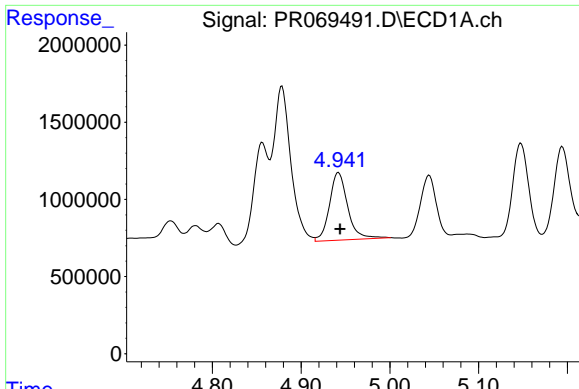
#4 AR-1016-2

R.T.: 4.878 min
 Delta R.T.: -0.002 min
 Response: 13908464
 Conc: 293.63 ng/ml



#4 AR-1016-2

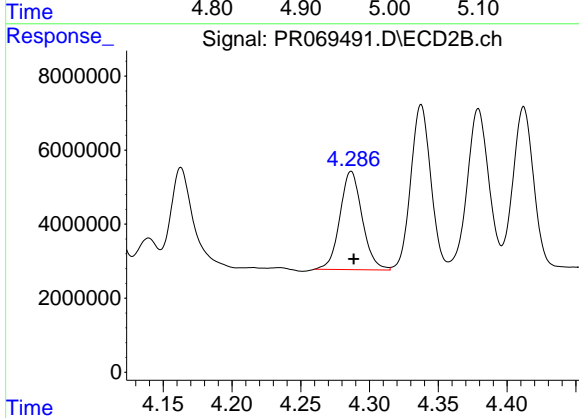
R.T.: 4.107 min
 Delta R.T.: -0.002 min
 Response: 72019626
 Conc: 252.93 ng/ml



#5 AR-1016-3

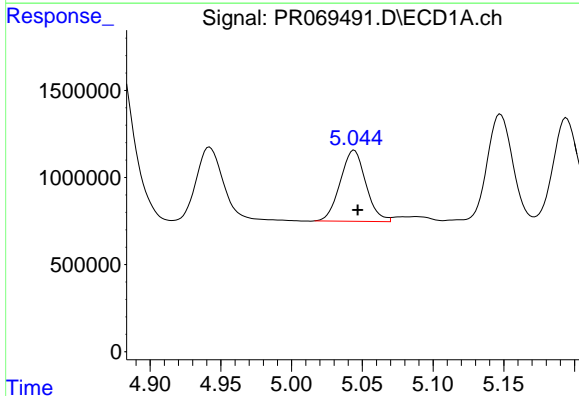
R.T.: 4.942 min
 Delta R.T.: -0.002 min
 Response: 6225651
 Conc: 211.39 ng/ml

Instrument :
 ECD_R
 ClientSampleId :



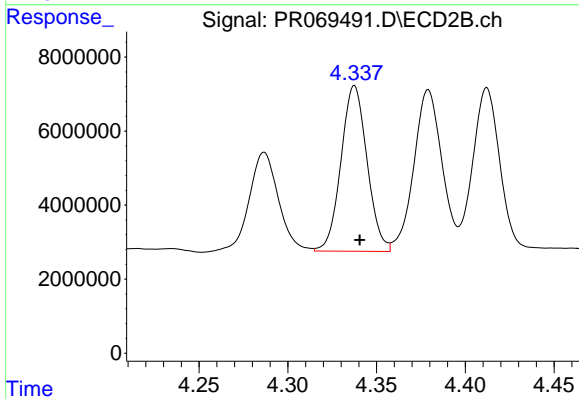
#5 AR-1016-3

R.T.: 4.287 min
 Delta R.T.: -0.002 min
 Response: 30019145
 Conc: 196.47 ng/ml



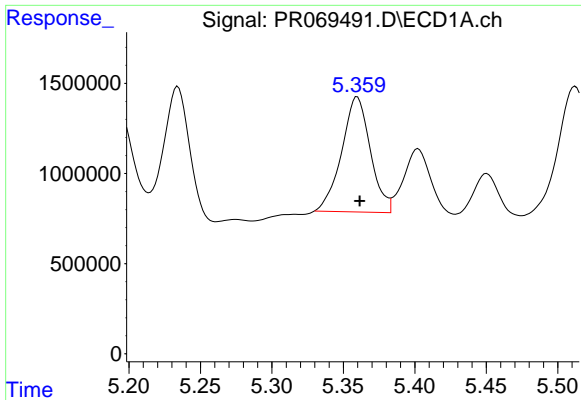
#6 AR-1016-4

R.T.: 5.044 min
 Delta R.T.: -0.003 min
 Response: 5133462
 Conc: 220.42 ng/ml



#6 AR-1016-4

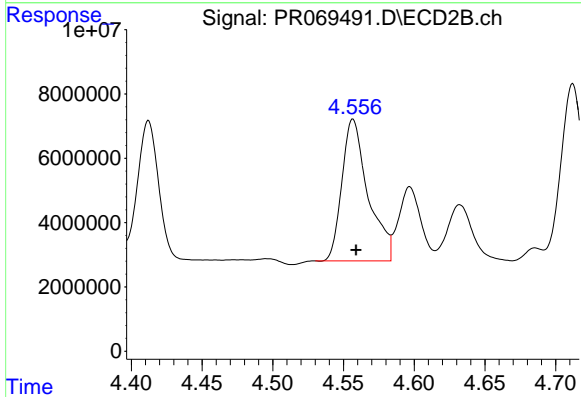
R.T.: 4.338 min
 Delta R.T.: -0.003 min
 Response: 45753165
 Conc: 369.63 ng/ml



#7 AR-1016-5

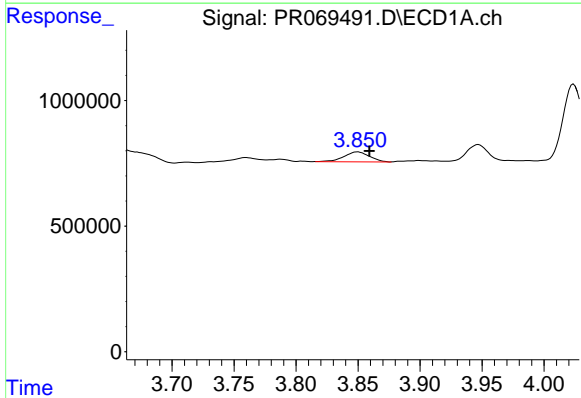
R.T.: 5.360 min
 Delta R.T.: -0.002 min
 Response: 8932786
 Conc: 372.79 ng/ml

Instrument :
 ECD_R
 ClientSampleId :



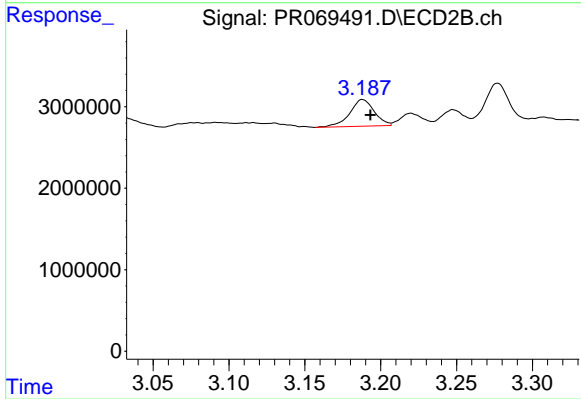
#7 AR-1016-5

R.T.: 4.557 min
 Delta R.T.: -0.002 min
 Response: 56607424
 Conc: 373.99 ng/ml



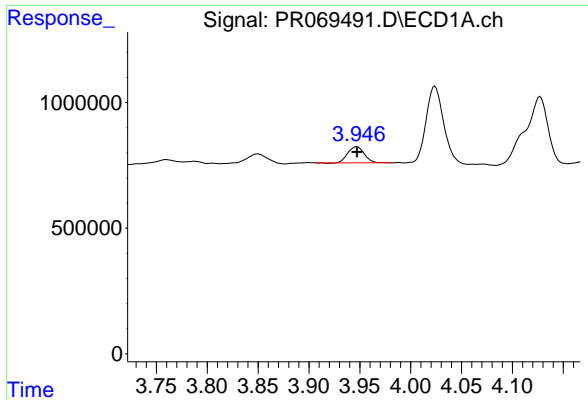
#8 AR-1221-1

R.T.: 3.850 min
 Delta R.T.: -0.010 min
 Response: 560081
 Conc: 47.52 ng/ml



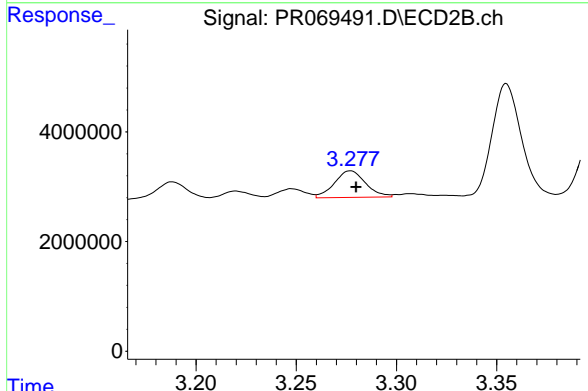
#8 AR-1221-1

R.T.: 3.188 min
 Delta R.T.: -0.005 min
 Response: 3674701
 Conc: 49.05 ng/ml

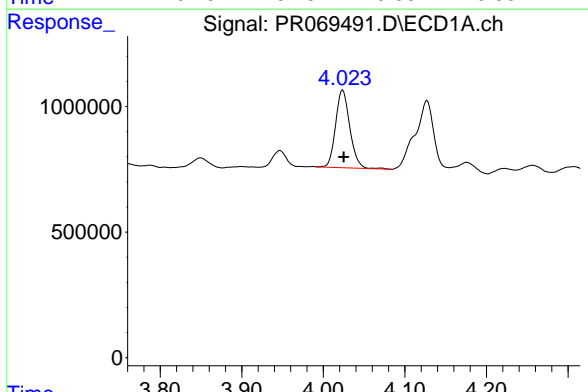


#9 AR-1221-2
 R.T.: 3.947 min
 Delta R.T.: 0.000 min
 Response: 723102
 Conc: 97.51 ng/ml

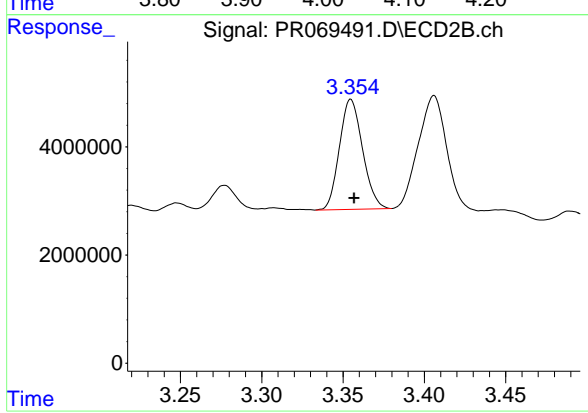
Instrument :
 ECD_R
 ClientSampleId :



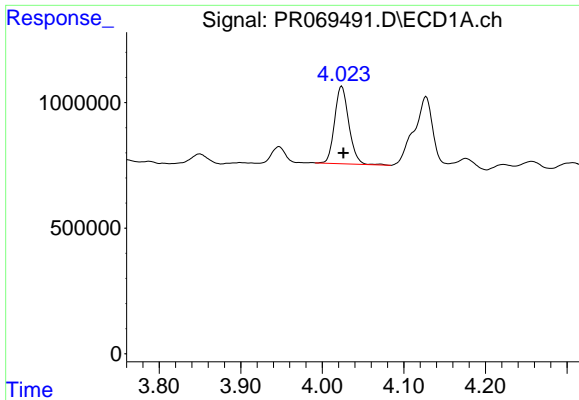
#9 AR-1221-2
 R.T.: 3.277 min
 Delta R.T.: -0.003 min
 Response: 5266816
 Conc: 99.51 ng/ml



#10 AR-1221-3
 R.T.: 4.024 min
 Delta R.T.: -0.001 min
 Response: 3746781
 Conc: 134.59 ng/ml



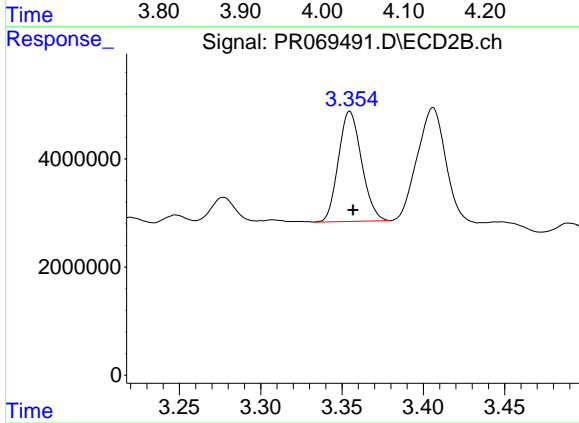
#10 AR-1221-3
 R.T.: 3.355 min
 Delta R.T.: -0.002 min
 Response: 20140790
 Conc: 119.96 ng/ml



#11 AR-1232-1

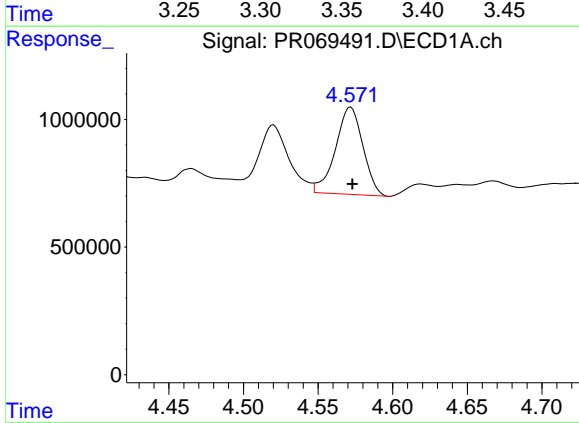
R.T.: 4.024 min
 Delta R.T.: -0.002 min
 Response: 3746781
 Conc: 168.04 ng/ml

Instrument :
 ECD_R
 ClientSampleId :



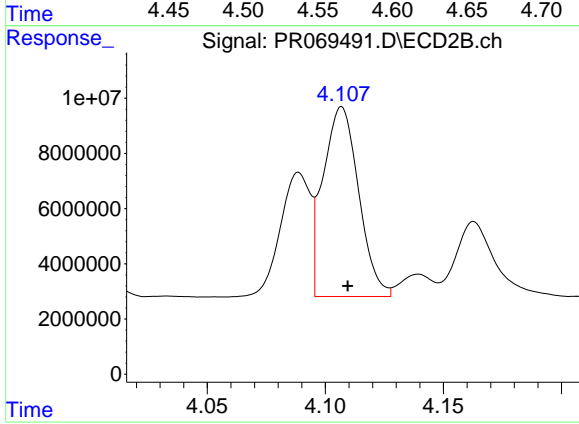
#11 AR-1232-1

R.T.: 3.355 min
 Delta R.T.: -0.002 min
 Response: 20140790
 Conc: 150.11 ng/ml



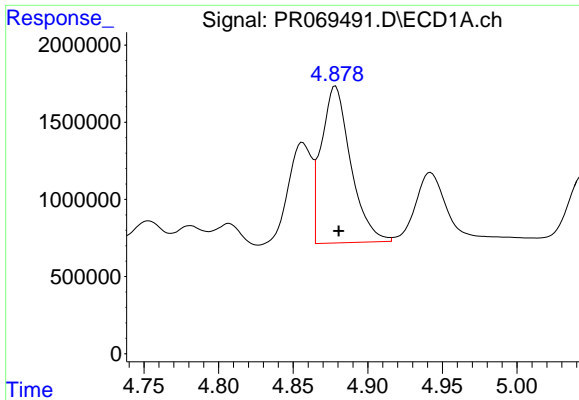
#12 AR-1232-2

R.T.: 4.572 min
 Delta R.T.: -0.001 min
 Response: 4380704
 Conc: 379.80 ng/ml



#12 AR-1232-2

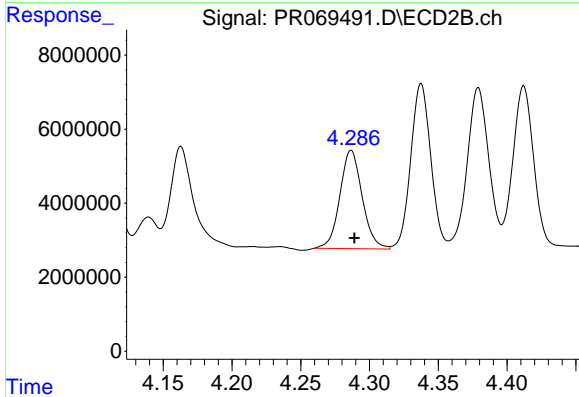
R.T.: 4.107 min
 Delta R.T.: -0.003 min
 Response: 72019626
 Conc: 545.56 ng/ml



#13 AR-1232-3

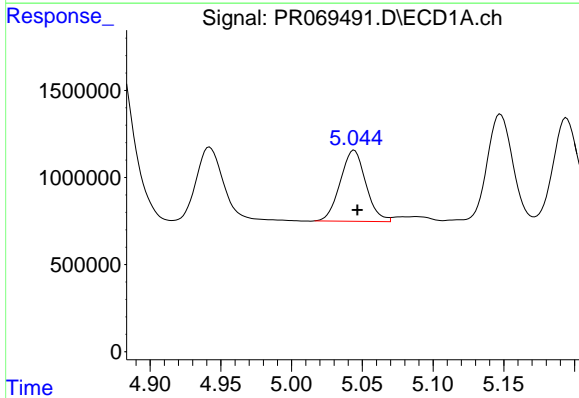
R.T.: 4.878 min
 Delta R.T.: -0.002 min
 Response: 13908464
 Conc: 641.53 ng/ml

Instrument :
 ECD_R
 ClientSampleId :



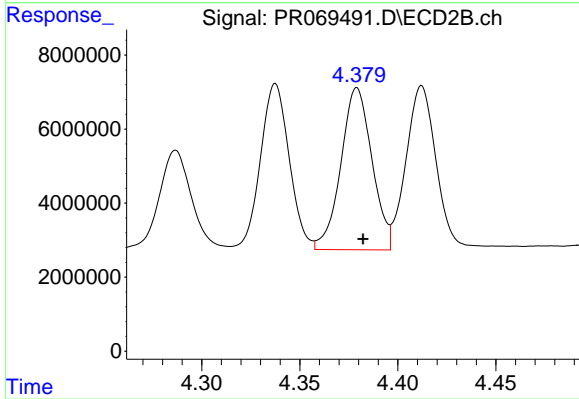
#13 AR-1232-3

R.T.: 4.287 min
 Delta R.T.: -0.002 min
 Response: 30019145
 Conc: 436.48 ng/ml



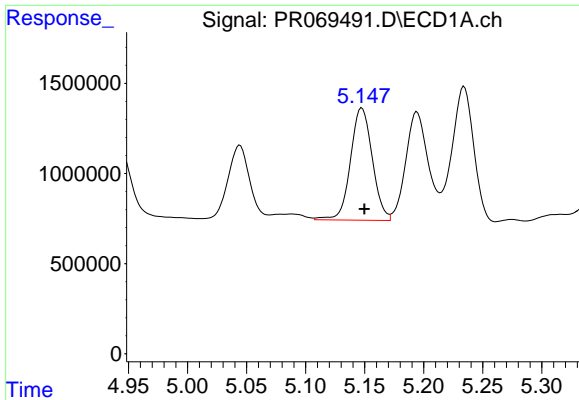
#14 AR-1232-4

R.T.: 5.044 min
 Delta R.T.: -0.002 min
 Response: 5133462
 Conc: 486.18 ng/ml



#14 AR-1232-4

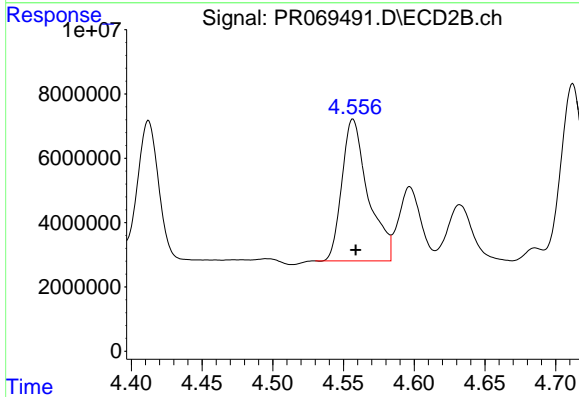
R.T.: 4.379 min
 Delta R.T.: -0.003 min
 Response: 48347845
 Conc: 812.16 ng/ml



#15 AR-1232-5

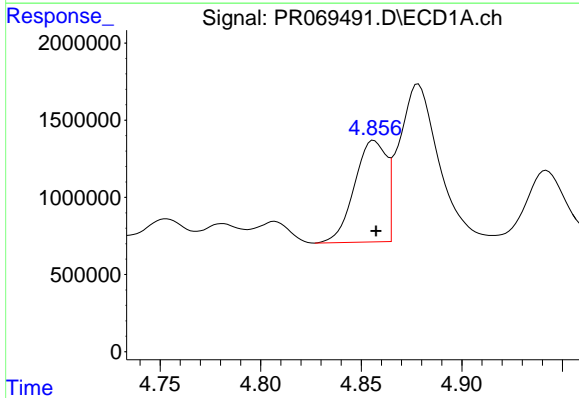
R.T.: 5.148 min
 Delta R.T.: -0.002 min
 Response: 8012120
 Conc: 1077.81 ng/ml

Instrument :
 ECD_R
 ClientSampleId :



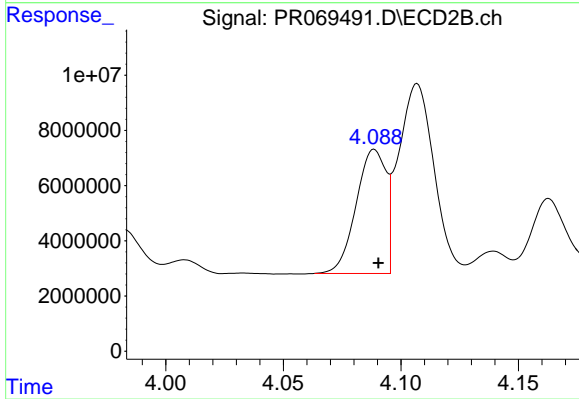
#15 AR-1232-5

R.T.: 4.557 min
 Delta R.T.: -0.002 min
 Response: 56607424
 Conc: 896.33 ng/ml



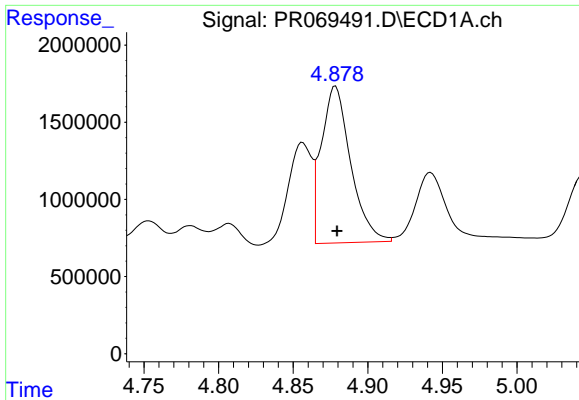
#16 AR-1242-1

R.T.: 4.856 min
 Delta R.T.: -0.001 min
 Response: 7229393
 Conc: 273.71 ng/ml



#16 AR-1242-1

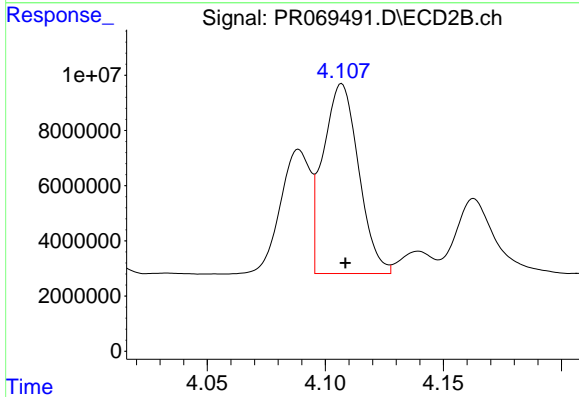
R.T.: 4.089 min
 Delta R.T.: -0.002 min
 Response: 39700920
 Conc: 237.45 ng/ml



#17 AR-1242-2

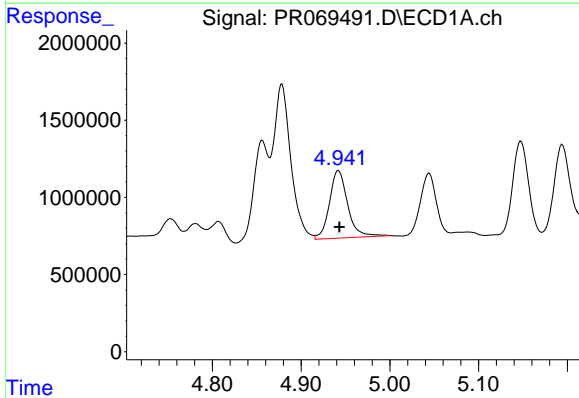
R.T.: 4.878 min
 Delta R.T.: 0.000 min
 Response: 13908464
 Conc: 351.67 ng/ml

Instrument :
 ECD_R
 ClientSampleId :



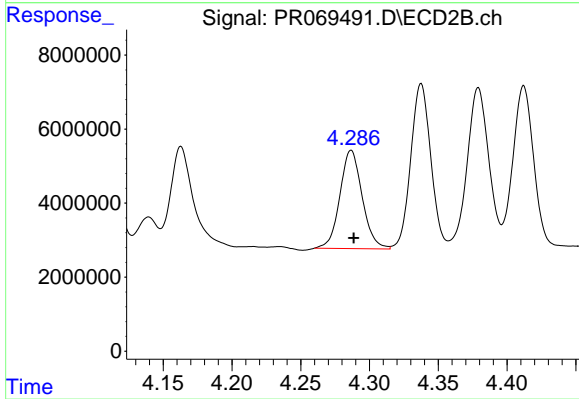
#17 AR-1242-2

R.T.: 4.107 min
 Delta R.T.: -0.002 min
 Response: 72019626
 Conc: 303.11 ng/ml



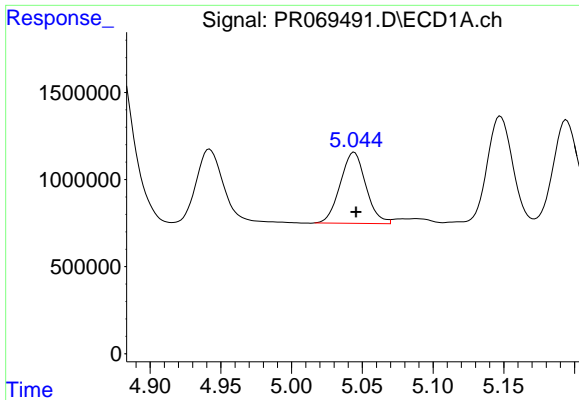
#18 AR-1242-3

R.T.: 4.942 min
 Delta R.T.: -0.001 min
 Response: 6225651
 Conc: 252.32 ng/ml



#18 AR-1242-3

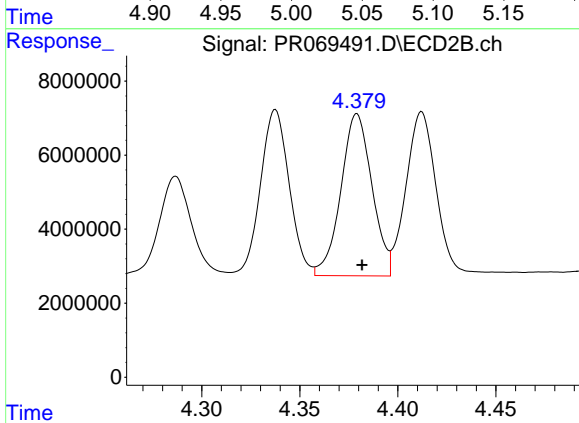
R.T.: 4.287 min
 Delta R.T.: -0.002 min
 Response: 30019145
 Conc: 235.47 ng/ml



#19 AR-1242-4

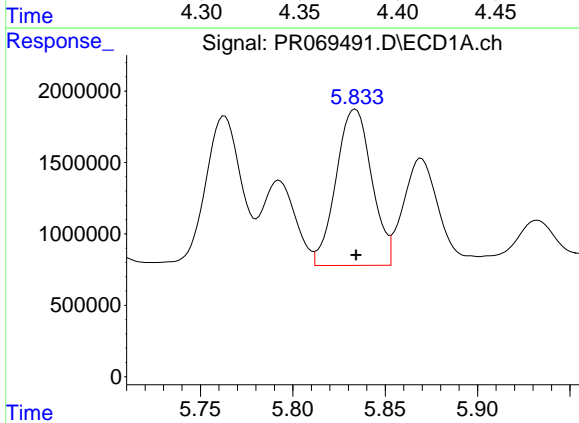
R.T.: 5.044 min
 Delta R.T.: -0.001 min
 Response: 5133462
 Conc: 266.85 ng/ml

Instrument :
 ECD_R
 ClientSampleId :



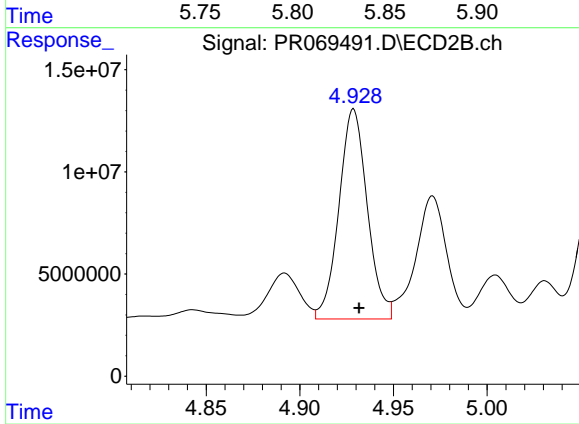
#19 AR-1242-4

R.T.: 4.379 min
 Delta R.T.: -0.003 min
 Response: 48347845
 Conc: 399.03 ng/ml



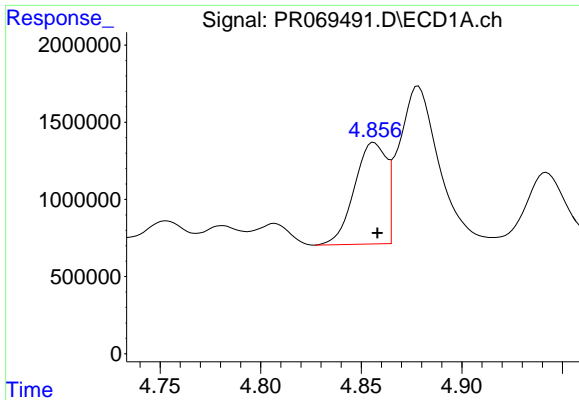
#20 AR-1242-5

R.T.: 5.834 min
 Delta R.T.: 0.000 min
 Response: 14711161
 Conc: 717.48 ng/ml



#20 AR-1242-5

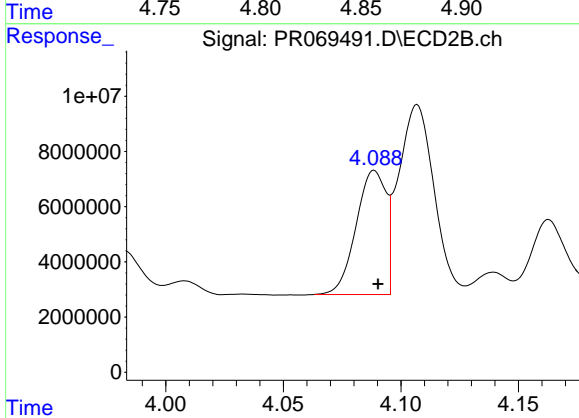
R.T.: 4.929 min
 Delta R.T.: -0.003 min
 Response: 108383955
 Conc: 751.53 ng/ml



#21 AR-1248-1

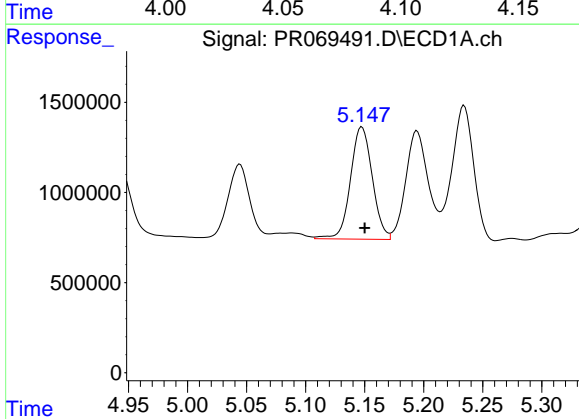
R.T.: 4.856 min
 Delta R.T.: -0.002 min
 Response: 7229393
 Conc: 368.00 ng/ml

Instrument :
 ECD_R
 ClientSampleId :



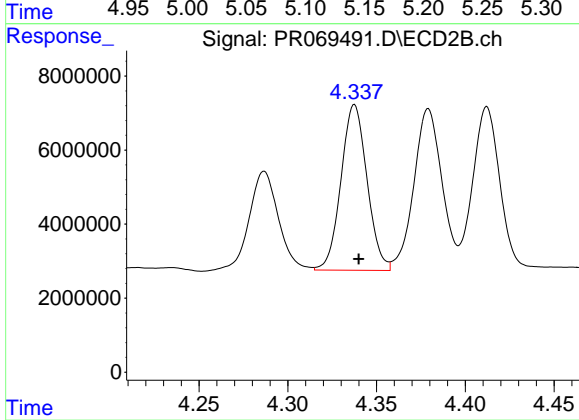
#21 AR-1248-1

R.T.: 4.089 min
 Delta R.T.: -0.002 min
 Response: 39700920
 Conc: 318.07 ng/ml



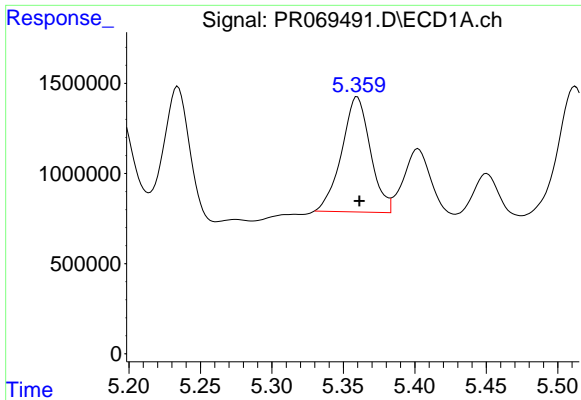
#22 AR-1248-2

R.T.: 5.148 min
 Delta R.T.: -0.002 min
 Response: 8012120
 Conc: 291.76 ng/ml



#22 AR-1248-2

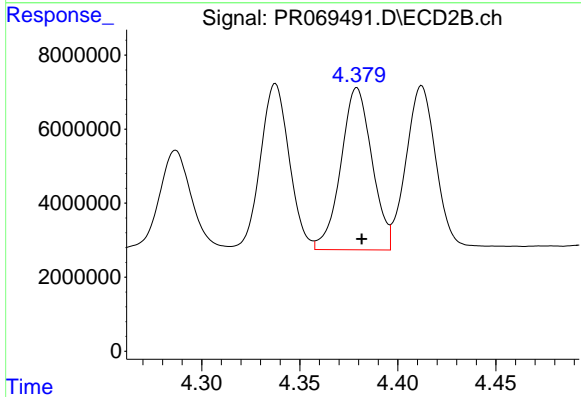
R.T.: 4.338 min
 Delta R.T.: -0.002 min
 Response: 45753165
 Conc: 264.09 ng/ml



#23 AR-1248-3

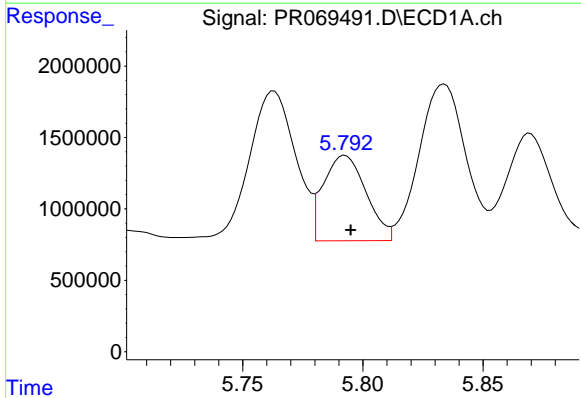
R.T.: 5.360 min
 Delta R.T.: -0.002 min
 Response: 8932786
 Conc: 279.74 ng/ml

Instrument :
 ECD_R
 ClientSampleId :



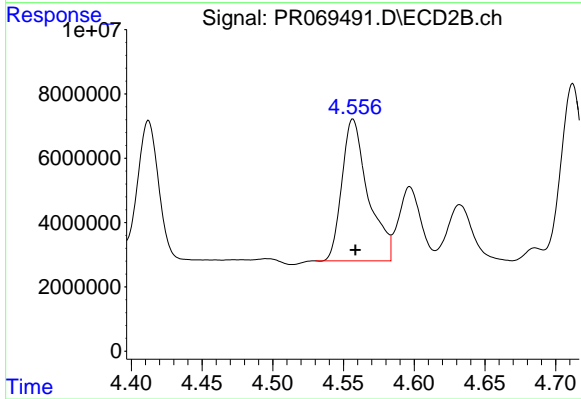
#23 AR-1248-3

R.T.: 4.379 min
 Delta R.T.: -0.002 min
 Response: 48347845
 Conc: 276.34 ng/ml



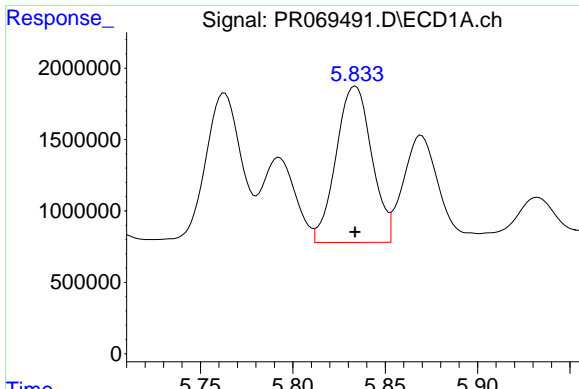
#24 AR-1248-4

R.T.: 5.793 min
 Delta R.T.: -0.002 min
 Response: 7391436
 Conc: 212.02 ng/ml



#24 AR-1248-4

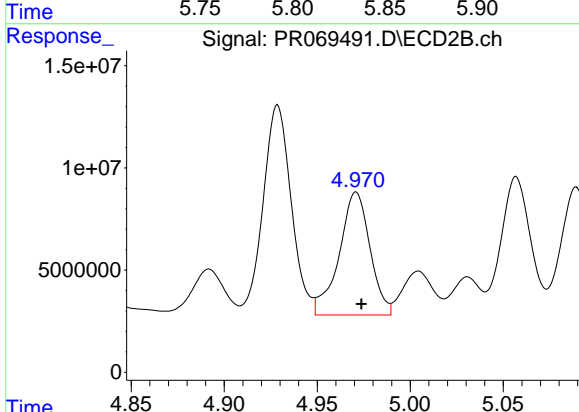
R.T.: 4.557 min
 Delta R.T.: -0.002 min
 Response: 56607424
 Conc: 275.74 ng/ml



#25 AR-1248-5

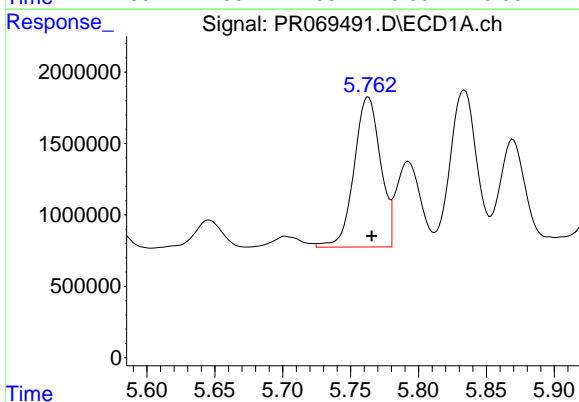
R.T.: 5.834 min
 Delta R.T.: 0.000 min
 Response: 14711161
 Conc: 425.39 ng/ml

Instrument :
 ECD_R
 ClientSampleId :



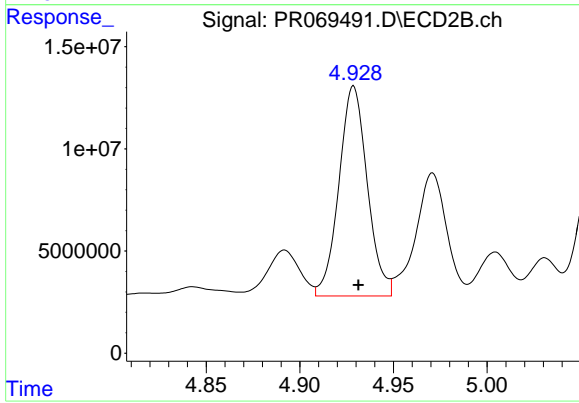
#25 AR-1248-5

R.T.: 4.971 min
 Delta R.T.: -0.003 min
 Response: 69785617
 Conc: 354.89 ng/ml



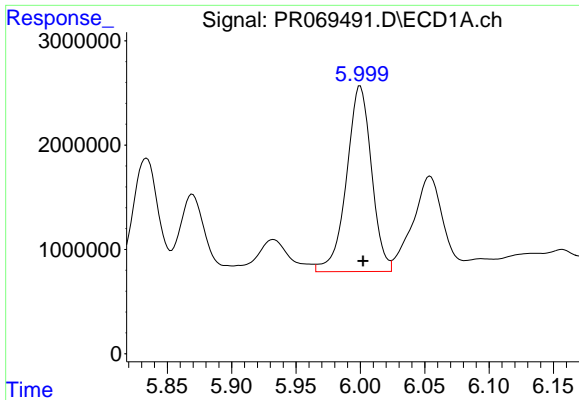
#26 AR-1254-1

R.T.: 5.763 min
 Delta R.T.: -0.003 min
 Response: 14248014
 Conc: 396.46 ng/ml



#26 AR-1254-1

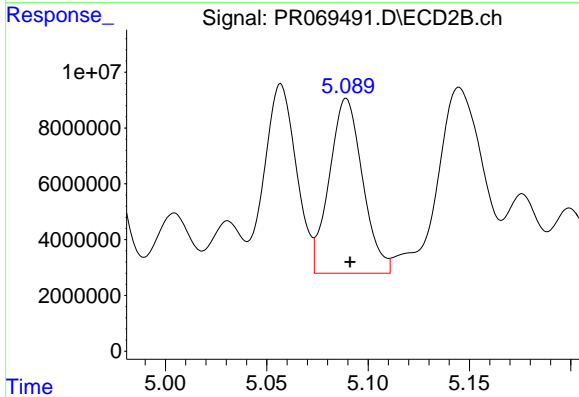
R.T.: 4.929 min
 Delta R.T.: -0.003 min
 Response: 108383955
 Conc: 363.23 ng/ml



#27 AR-1254-2

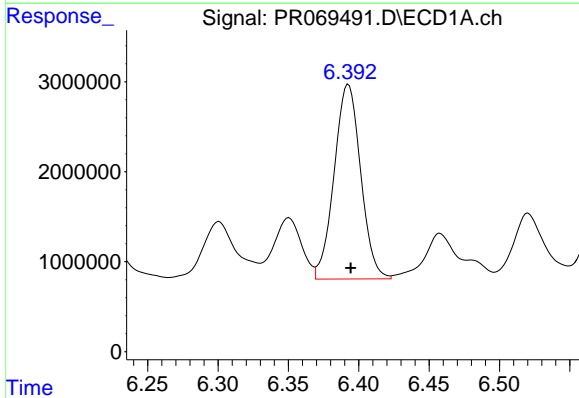
R.T.: 6.000 min
 Delta R.T.: -0.002 min
 Response: 24086819
 Conc: 437.70 ng/ml

Instrument :
 ECD_R
 ClientSampleId :



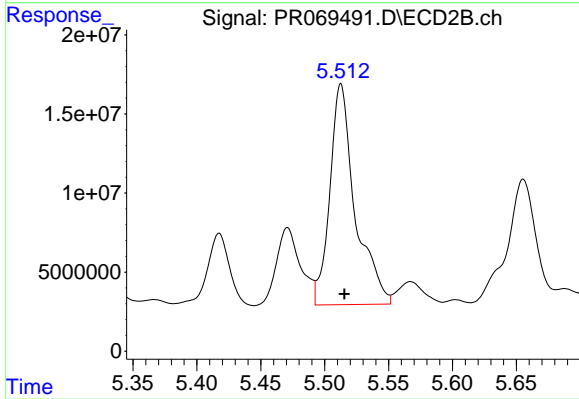
#27 AR-1254-2

R.T.: 5.089 min
 Delta R.T.: -0.002 min
 Response: 71584963
 Conc: 279.50 ng/ml



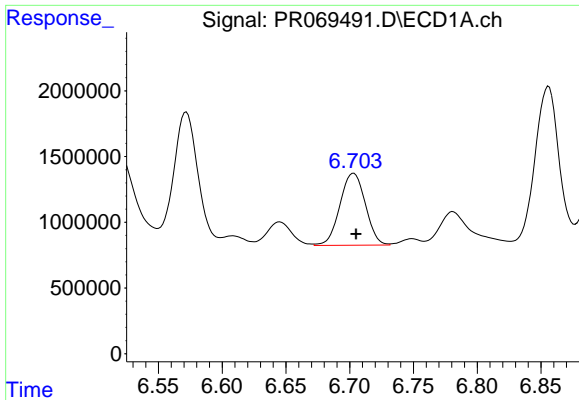
#28 AR-1254-3

R.T.: 6.393 min
 Delta R.T.: -0.002 min
 Response: 28404116
 Conc: 497.19 ng/ml



#28 AR-1254-3

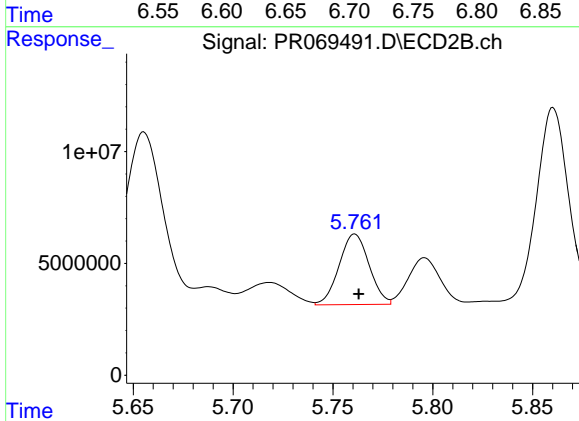
R.T.: 5.513 min
 Delta R.T.: -0.003 min
 Response: 191870419
 Conc: 485.63 ng/ml



#29 AR-1254-4

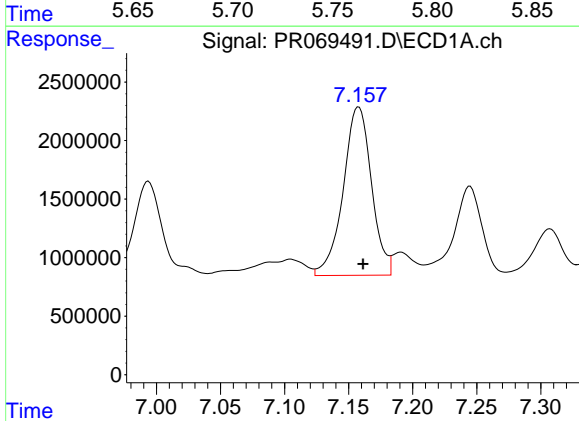
R.T.: 6.703 min
 Delta R.T.: -0.002 min
 Response: 7620580
 Conc: 187.46 ng/ml

Instrument :
 ECD_R
 ClientSampleId :



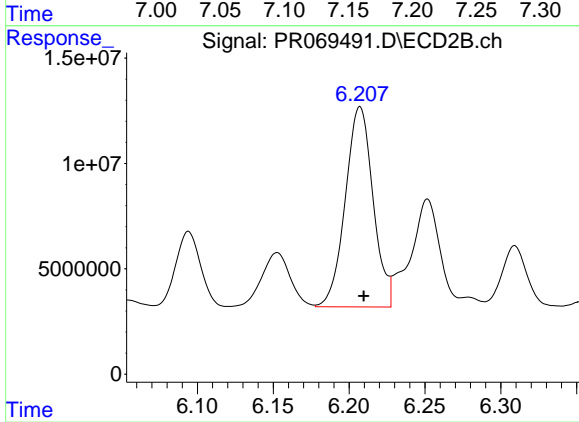
#29 AR-1254-4

R.T.: 5.761 min
 Delta R.T.: -0.002 min
 Response: 32997731
 Conc: 134.74 ng/ml



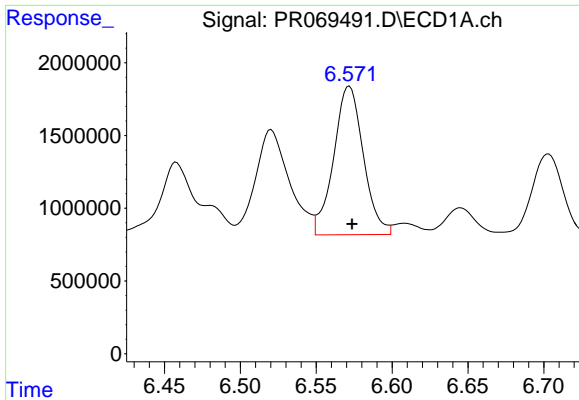
#30 AR-1254-5

R.T.: 7.158 min
 Delta R.T.: -0.003 min
 Response: 22153379
 Conc: 517.70 ng/ml



#30 AR-1254-5

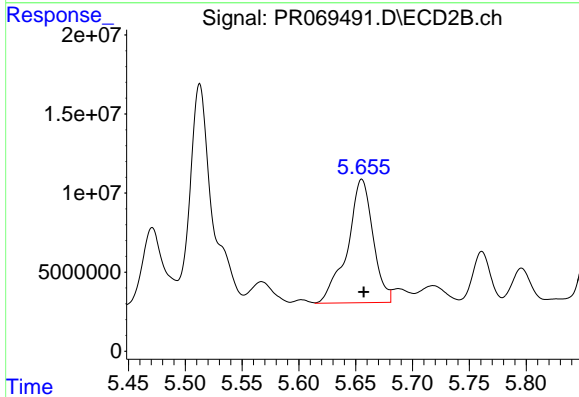
R.T.: 6.207 min
 Delta R.T.: -0.002 min
 Response: 120991479
 Conc: 346.69 ng/ml



#31 AR-1260-1

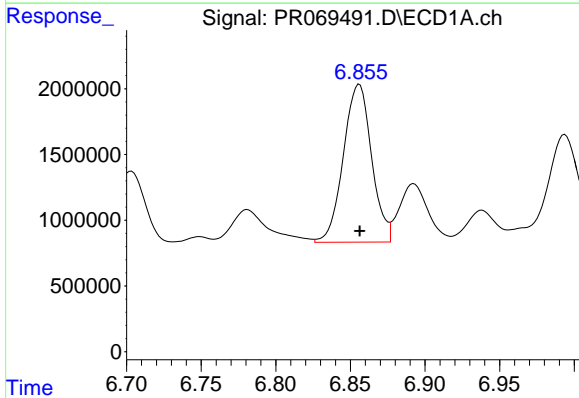
R.T.: 6.572 min
 Delta R.T.: -0.002 min
 Response: 13919984
 Conc: 337.28 ng/ml

Instrument :
 ECD_R
 ClientSampleId :



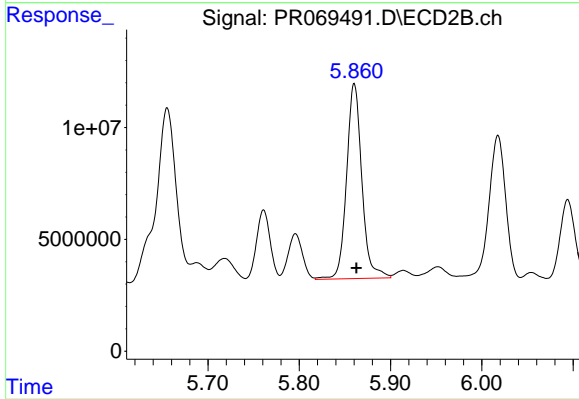
#31 AR-1260-1

R.T.: 5.655 min
 Delta R.T.: -0.002 min
 Response: 122517244
 Conc: 483.61 ng/ml



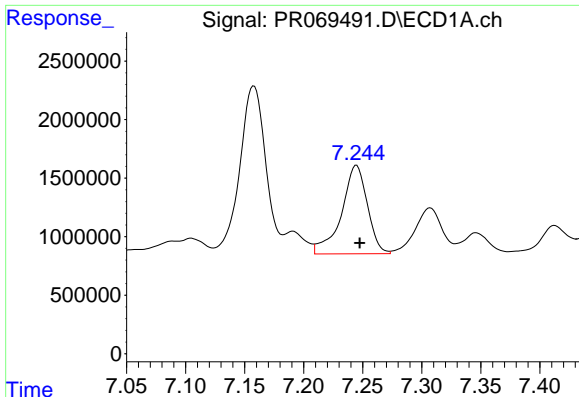
#32 AR-1260-2

R.T.: 6.856 min
 Delta R.T.: 0.000 min
 Response: 15815672
 Conc: 331.46 ng/ml



#32 AR-1260-2

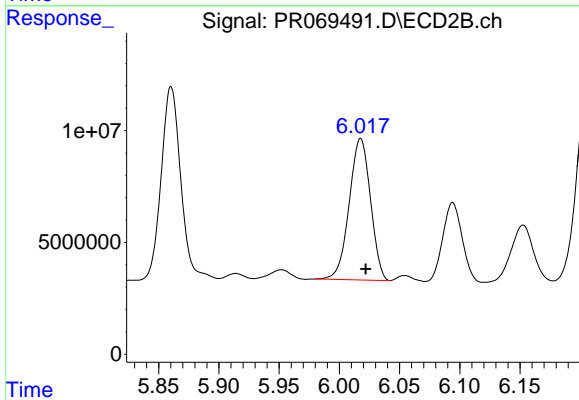
R.T.: 5.860 min
 Delta R.T.: -0.002 min
 Response: 101588933
 Conc: 342.77 ng/ml



#33 AR-1260-3

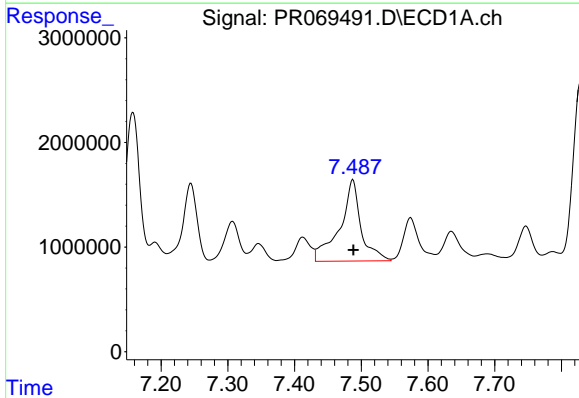
R.T.: 7.245 min
 Delta R.T.: -0.003 min
 Response: 11565095
 Conc: 315.68 ng/ml

Instrument :
 ECD_R
 ClientSampleId :



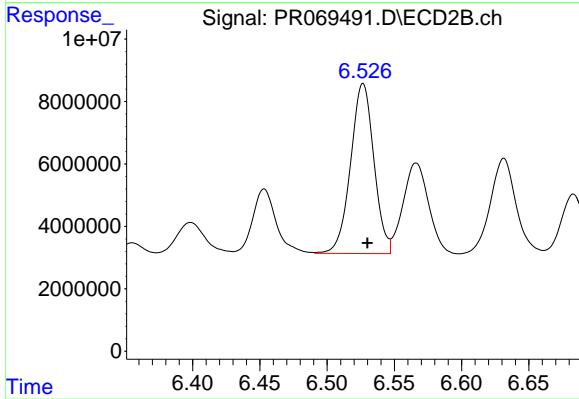
#33 AR-1260-3

R.T.: 6.018 min
 Delta R.T.: -0.004 min
 Response: 77905030
 Conc: 274.89 ng/ml



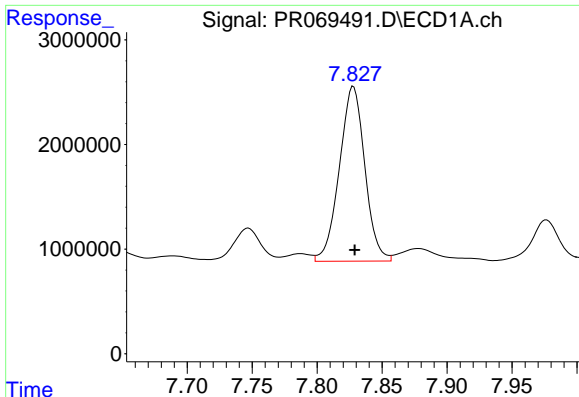
#34 AR-1260-4

R.T.: 7.487 min
 Delta R.T.: -0.001 min
 Response: 17168057
 Conc: 412.74 ng/ml



#34 AR-1260-4

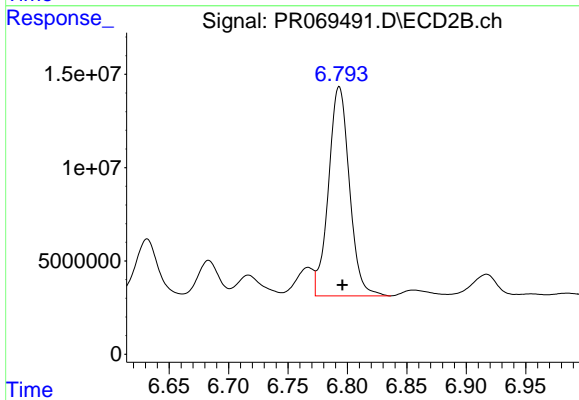
R.T.: 6.527 min
 Delta R.T.: -0.003 min
 Response: 65772906
 Conc: 272.33 ng/ml



#35 AR-1260-5

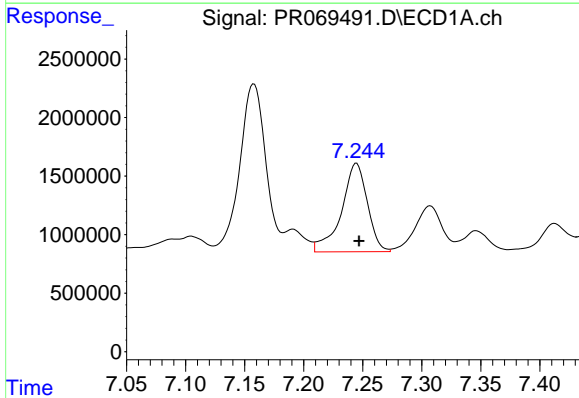
R.T.: 7.828 min
 Delta R.T.: 0.000 min
 Response: 22771128
 Conc: 298.46 ng/ml

Instrument :
 ECD_R
 ClientSampleId :



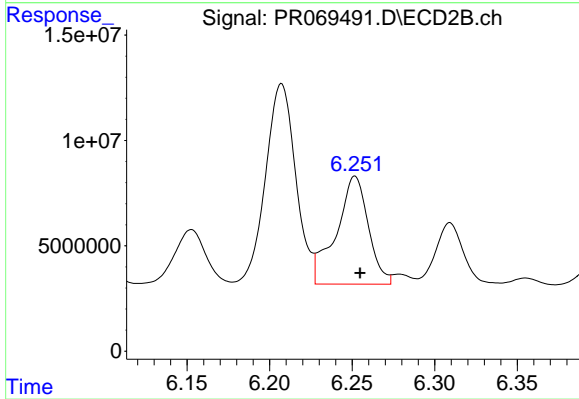
#35 AR-1260-5

R.T.: 6.793 min
 Delta R.T.: -0.003 min
 Response: 137440722
 Conc: 240.97 ng/ml



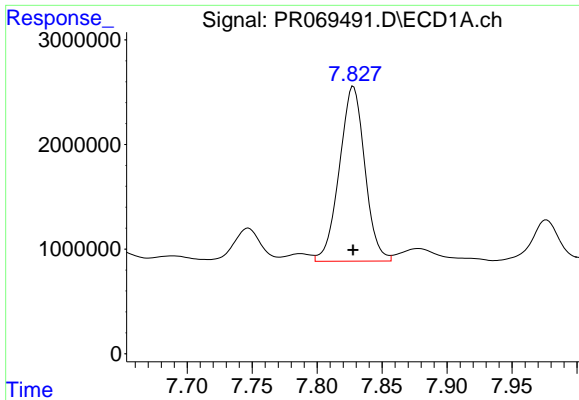
#36 AR-1262-1

R.T.: 7.245 min
 Delta R.T.: -0.002 min
 Response: 11565095
 Conc: 216.82 ng/ml



#36 AR-1262-1

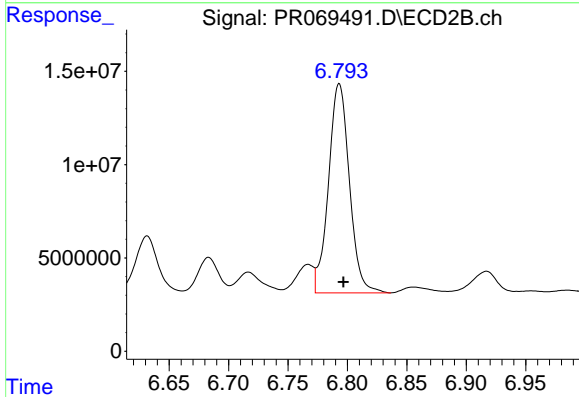
R.T.: 6.252 min
 Delta R.T.: -0.003 min
 Response: 69605219
 Conc: 195.13 ng/ml



#37 AR-1262-2

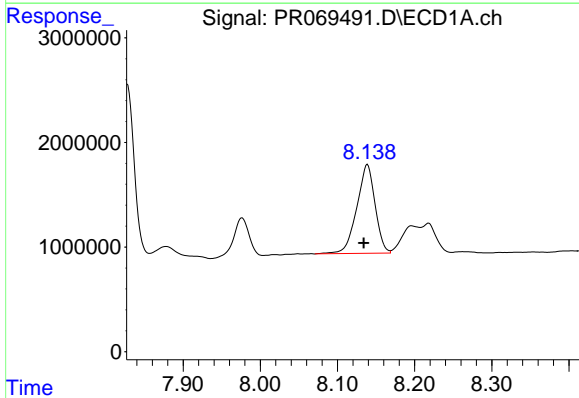
R.T.: 7.828 min
 Delta R.T.: 0.000 min
 Response: 22771128
 Conc: 262.35 ng/ml

Instrument :
 ECD_R
 ClientSampleId :



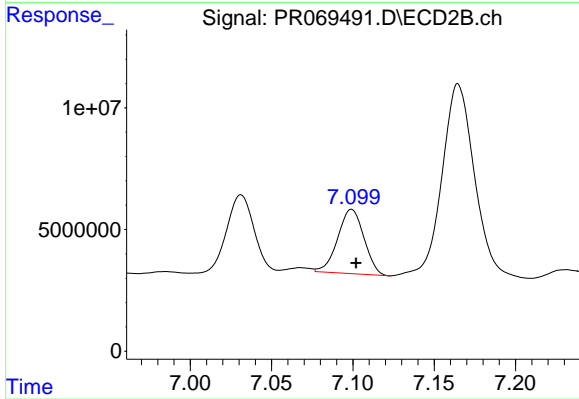
#37 AR-1262-2

R.T.: 6.793 min
 Delta R.T.: -0.003 min
 Response: 137440722
 Conc: 216.48 ng/ml



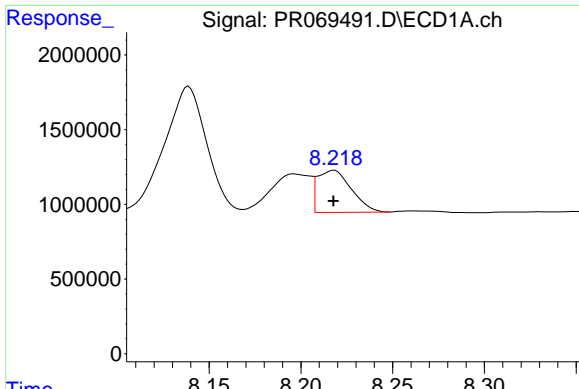
#38 AR-1262-3

R.T.: 8.139 min
 Delta R.T.: 0.005 min
 Response: 14035966
 Conc: 238.45 ng/ml



#38 AR-1262-3

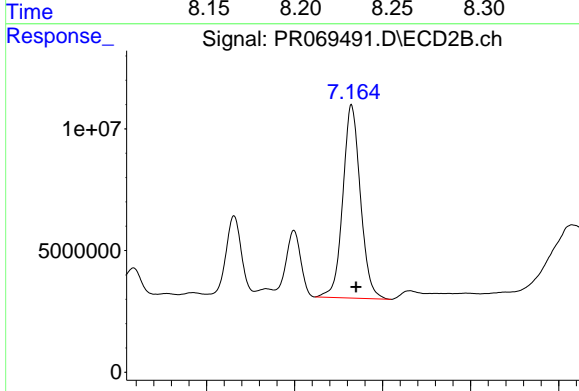
R.T.: 7.099 min
 Delta R.T.: -0.003 min
 Response: 29634826
 Conc: 118.55 ng/ml



#39 AR-1262-4

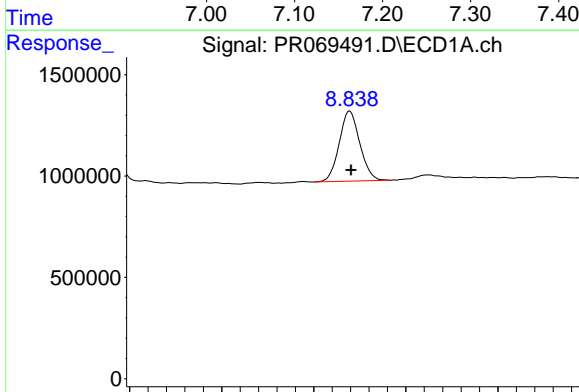
R.T.: 8.218 min
 Delta R.T.: 0.000 min
 Response: 3616462
 Conc: 79.67 ng/ml

Instrument :
 ECD_R
 ClientSampleId :



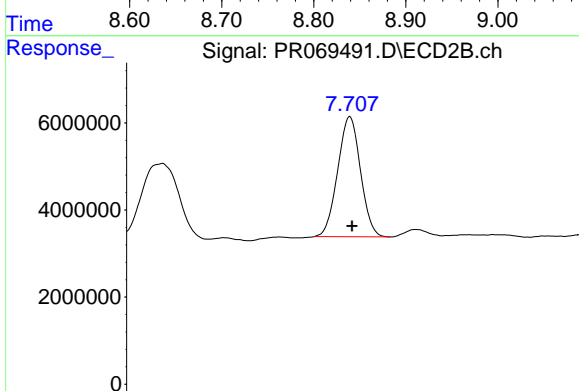
#39 AR-1262-4

R.T.: 7.165 min
 Delta R.T.: -0.005 min
 Response: 110342775
 Conc: 232.39 ng/ml



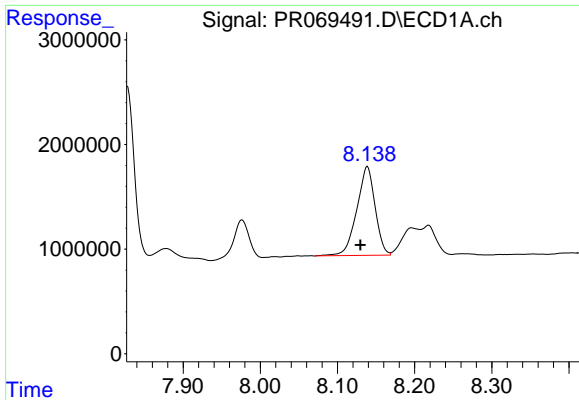
#40 AR-1262-5

R.T.: 8.839 min
 Delta R.T.: -0.002 min
 Response: 5383742
 Conc: 182.17 ng/ml



#40 AR-1262-5

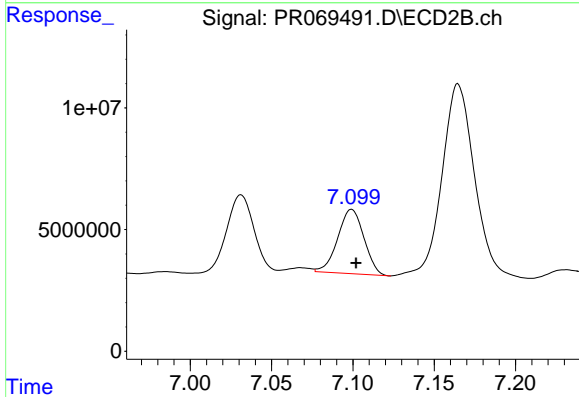
R.T.: 7.707 min
 Delta R.T.: -0.002 min
 Response: 31846855
 Conc: 146.08 ng/ml



#41 AR-1268-1

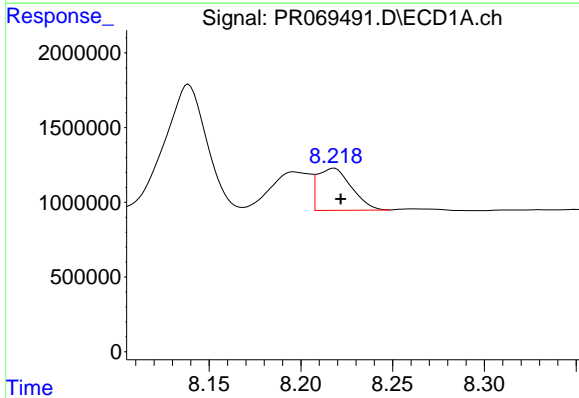
R.T.: 8.139 min
 Delta R.T.: 0.009 min
 Response: 14035966
 Conc: 137.32 ng/ml

Instrument :
 ECD_R
 ClientSampleId :



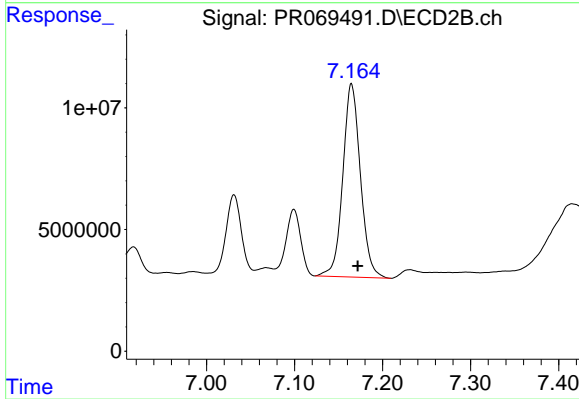
#41 AR-1268-1

R.T.: 7.099 min
 Delta R.T.: -0.003 min
 Response: 29634826
 Conc: 40.36 ng/ml



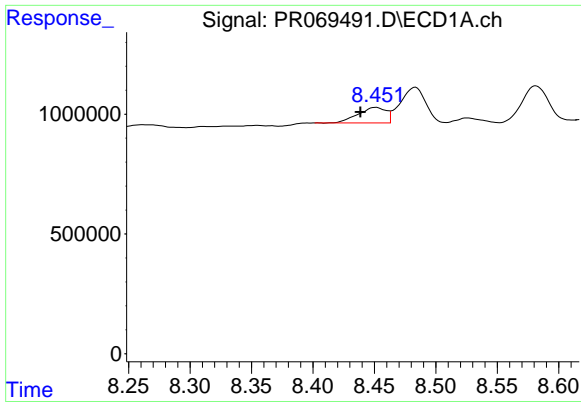
#42 AR-1268-2

R.T.: 8.218 min
 Delta R.T.: -0.004 min
 Response: 3616462
 Conc: 39.33 ng/ml



#42 AR-1268-2

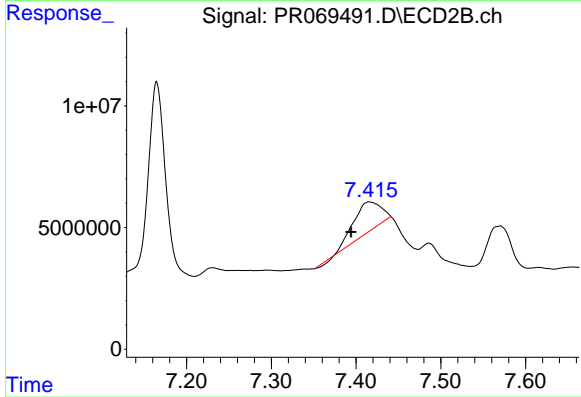
R.T.: 7.165 min
 Delta R.T.: -0.007 min
 Response: 110342775
 Conc: 161.21 ng/ml



#43 AR-1268-3

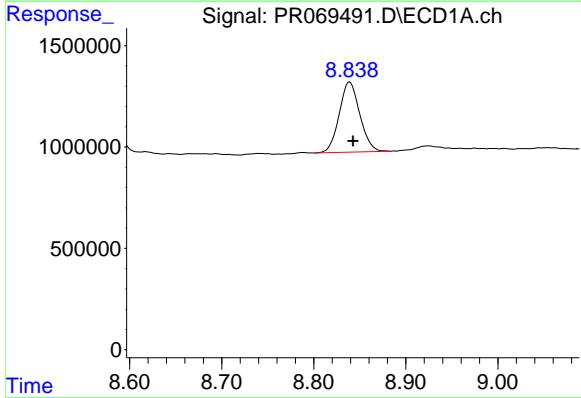
R.T.: 8.451 min
 Delta R.T.: 0.013 min
 Response: 1024158
 Conc: 13.29 ng/ml

Instrument :
 ECD_R
 ClientSampleId :



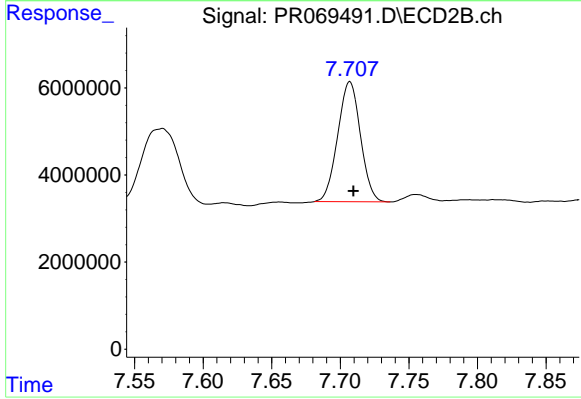
#43 AR-1268-3

R.T.: 7.415 min
 Delta R.T.: 0.021 min
 Response: 28707694
 Conc: 49.96 ng/ml



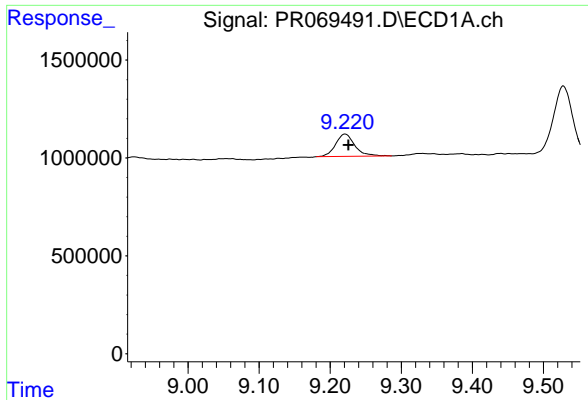
#44 AR-1268-4

R.T.: 8.839 min
 Delta R.T.: -0.004 min
 Response: 5383742
 Conc: 163.66 ng/ml



#44 AR-1268-4

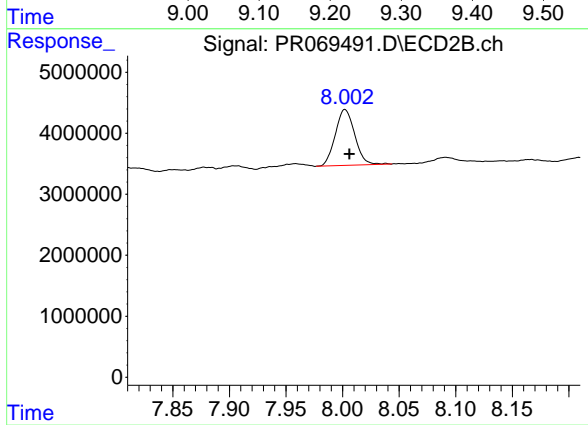
R.T.: 7.707 min
 Delta R.T.: -0.003 min
 Response: 31846855
 Conc: 128.83 ng/ml



#45 AR-1268-5

R.T.: 9.221 min
Delta R.T.: -0.004 min
Response: 2155358
Conc: 8.95 ng/ml

Instrument :
ECD_R
ClientSampleId :



#45 AR-1268-5

R.T.: 8.002 min
Delta R.T.: -0.004 min
Response: 10986755
Conc: 6.01 ng/ml