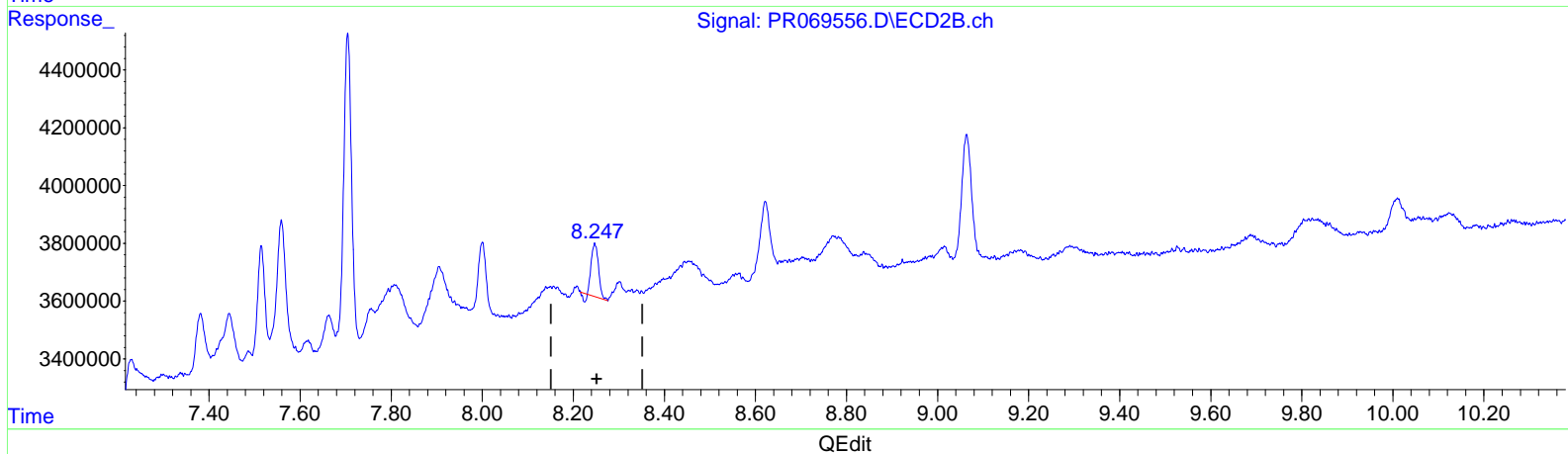
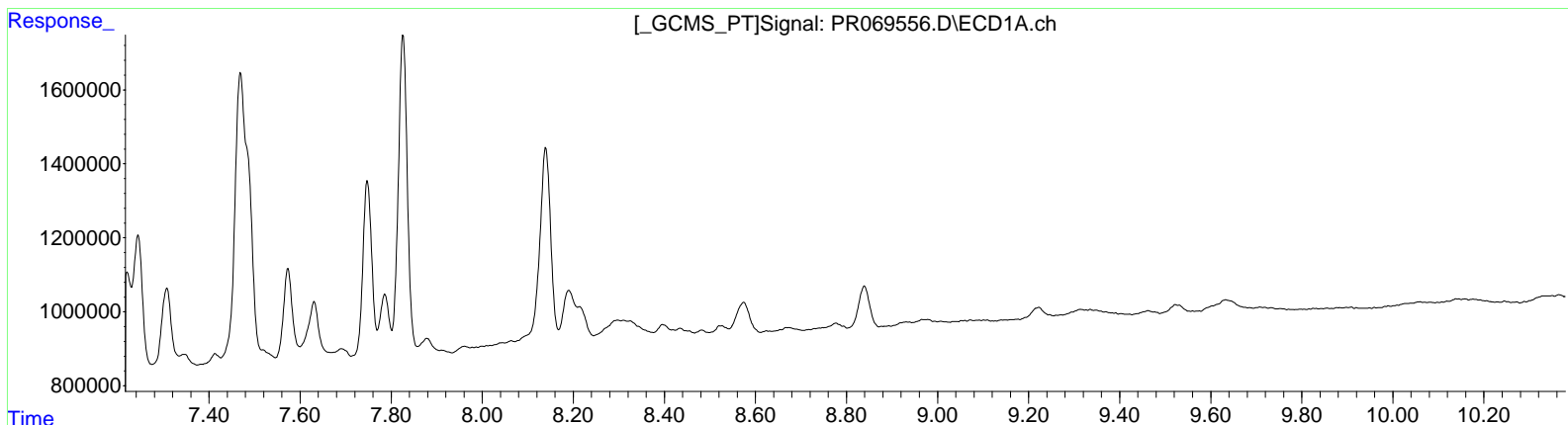


Data Path : Z:\pestpcbsrv\HPCHEM1\ECD\_R\Data\PR121224\  
 Data File : PR069556.D  
 Signal(s) : Signal #1: ECD1A.ch Signal #2: ECD2B.ch  
 Acq On : 12 Dec 2024 23:08  
 Operator : AJ\MA  
 Sample : P5234-06DL2 40X  
 Misc :  
 ALS Vial : 45 Sample Multiplier: 1

Integration File signal 1: autoint1.e  
 Integration File signal 2: autoint2.e  
 Quant Time: Dec 13 01:50:01 2024  
 Quant Method : Z:\pestpcbsrv\HPCHEM1\ECD\_R\Method\PR112124CLP.M  
 Quant Title : GC EXTRACTABLES  
 QLast Update : Fri Nov 22 04:30:58 2024  
 Response via : Initial Calibration  
 Integrator: ChemStation

Volume Inj. : 1 µl  
 Signal #1 Phase : ZB MR1 Signal #2 Phase: ZB MR2  
 Signal #1 Info : 30Mx0.32mmx 0.5µm Signal #2 Info : 30M x 0.32mm x 0.25µm



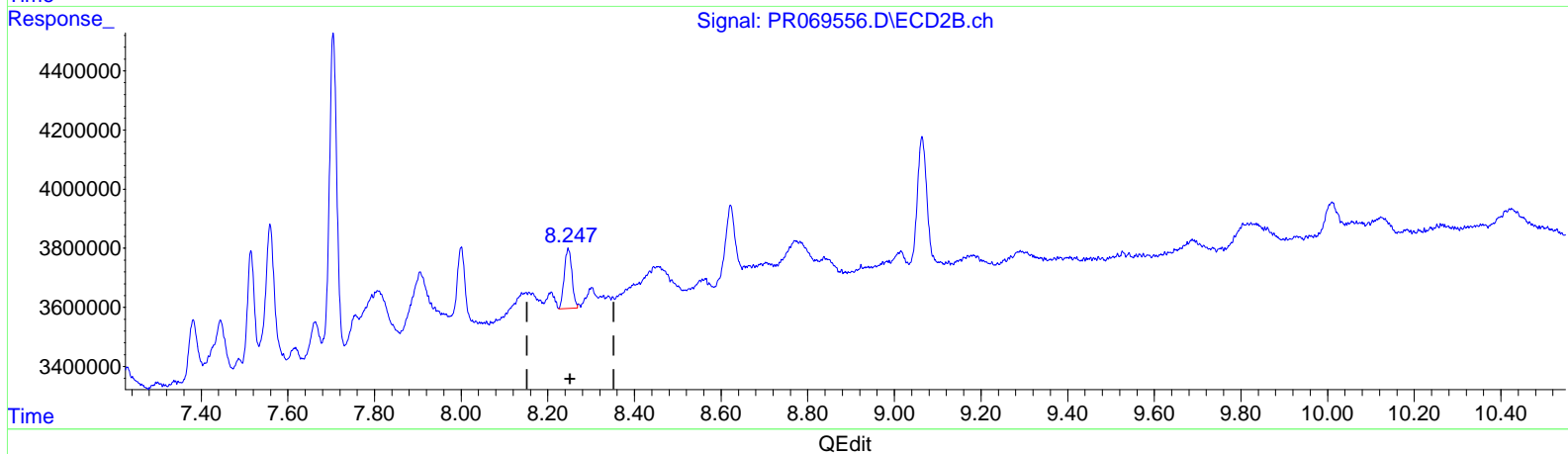
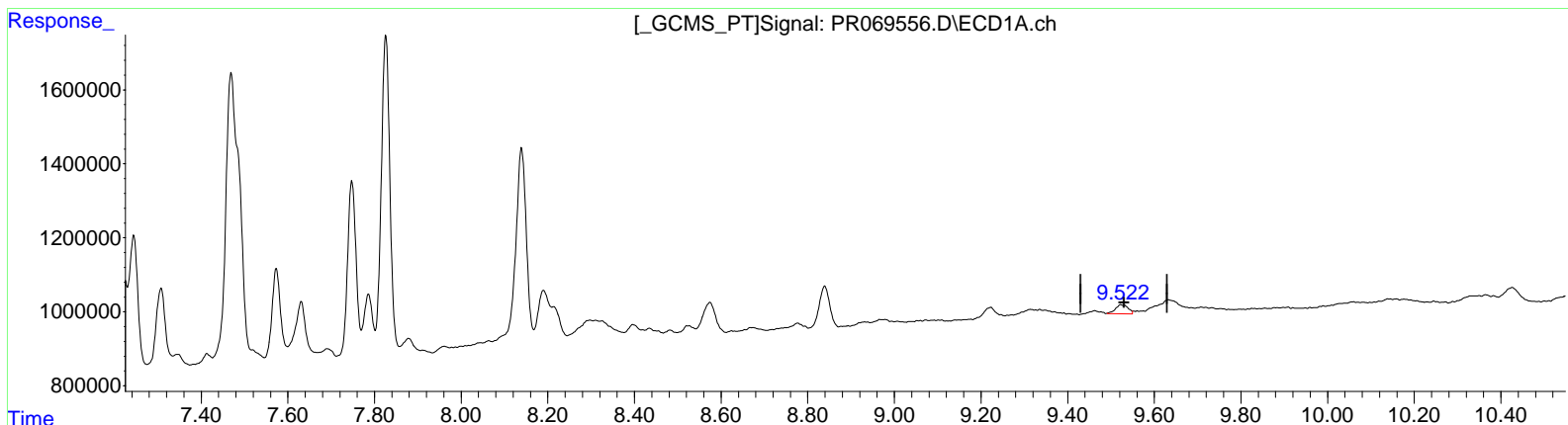
(2) Decachlorobiphenyl (SA)  
 0.000min 0.000 ng/ml  
 response 0

(2) Decachlorobiphenyl #2 (SA)  
 8.247min 0.509 ng/ml  
 response 1920227

Data Path : Z:\pestpcbsrv\HPCHEM1\ECD\_R\Data\PR121224\  
 Data File : PR069556.D  
 Signal(s) : Signal #1: ECD1A.ch Signal #2: ECD2B.ch  
 Acq On : 12 Dec 2024 23:08  
 Operator : AJ\MA  
 Sample : P5234-06DL2 40X  
 Misc :  
 ALS Vial : 45 Sample Multiplier: 1

Integration File signal 1: autoint1.e  
 Integration File signal 2: autoint2.e  
 Quant Time: Dec 13 01:50:01 2024  
 Quant Method : Z:\pestpcbsrv\HPCHEM1\ECD\_R\Method\PR12124CLP.M  
 Quant Title : GC EXTRACTABLES  
 QLast Update : Fri Nov 22 04:30:58 2024  
 Response via : Initial Calibration  
 Integrator: ChemStation

Volume Inj. : 1 µl  
 Signal #1 Phase : ZB MR1 Signal #2 Phase: ZB MR2  
 Signal #1 Info : 30Mx0.32mmx 0.5µm Signal #2 Info : 30M x 0.32mm x 0.25µm



(2) Decachlorobiphenyl (SA)

9.522min 0.896 ng/ml m

response 481413

(2) Decachlorobiphenyl #2 (SA)

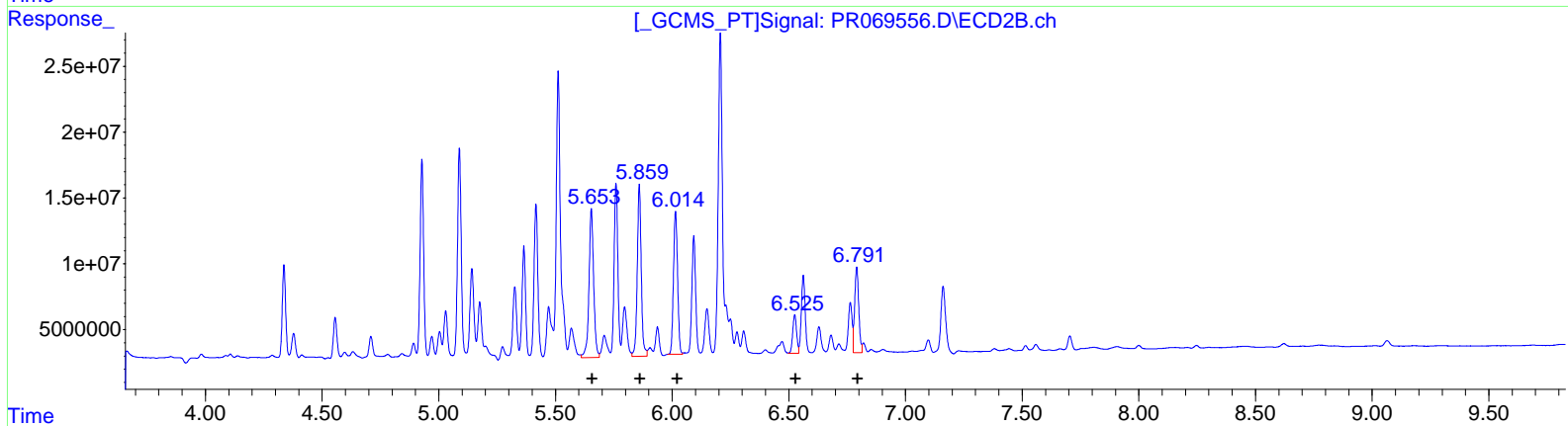
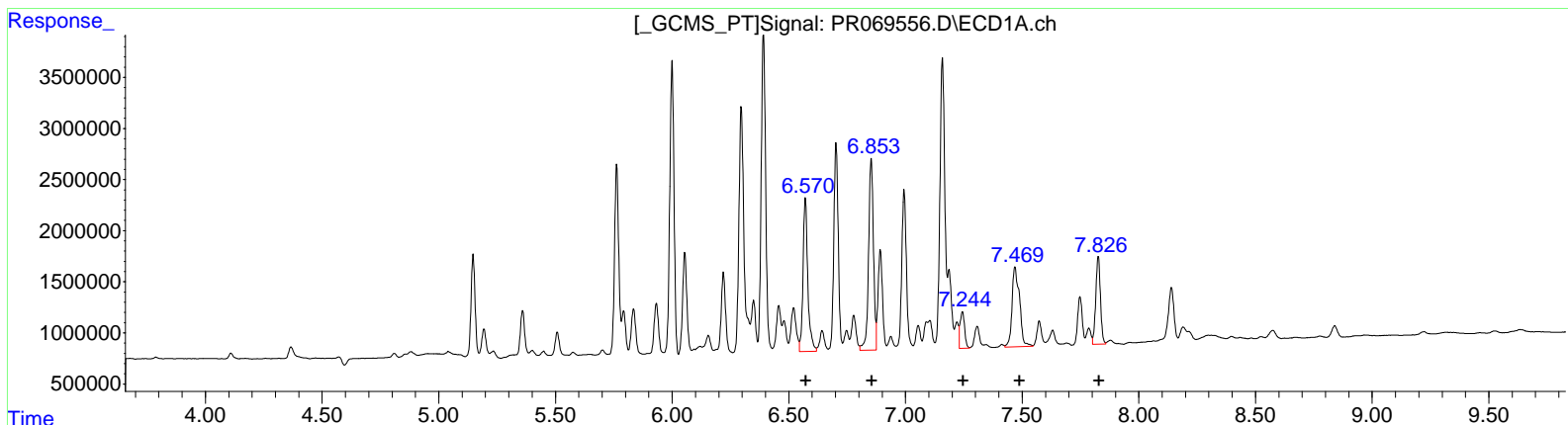
8.247min 0.666 ng/ml m

response 2510742

Data Path : Z:\pestpcbsrv\HPCHEM1\ECD\_R\Data\PR121224\  
 Data File : PR069556.D  
 Signal(s) : Signal #1: ECD1A.ch Signal #2: ECD2B.ch  
 Acq On : 12 Dec 2024 23:08  
 Operator : AJ\MA  
 Sample : P5234-06DL2 40X  
 Misc :  
 ALS Vial : 45 Sample Multiplier: 1

Integration File signal 1: autoint1.e  
 Integration File signal 2: autoint2.e  
 Quant Time: Dec 13 01:50:01 2024  
 Quant Method : Z:\pestpcbsrv\HPCHEM1\ECD\_R\Method\PR112124CLP.M  
 Quant Title : GC EXTRACTABLES  
 QLast Update : Fri Nov 22 04:30:58 2024  
 Response via : Initial Calibration  
 Integrator: ChemStation

Volume Inj. : 1 µl  
 Signal #1 Phase : ZB MR1 Signal #2 Phase: ZB MR2  
 Signal #1 Info : 30Mx0.32mmx 0.5µm Signal #2 Info : 30M x 0.32mm x 0.25µm



QEdit

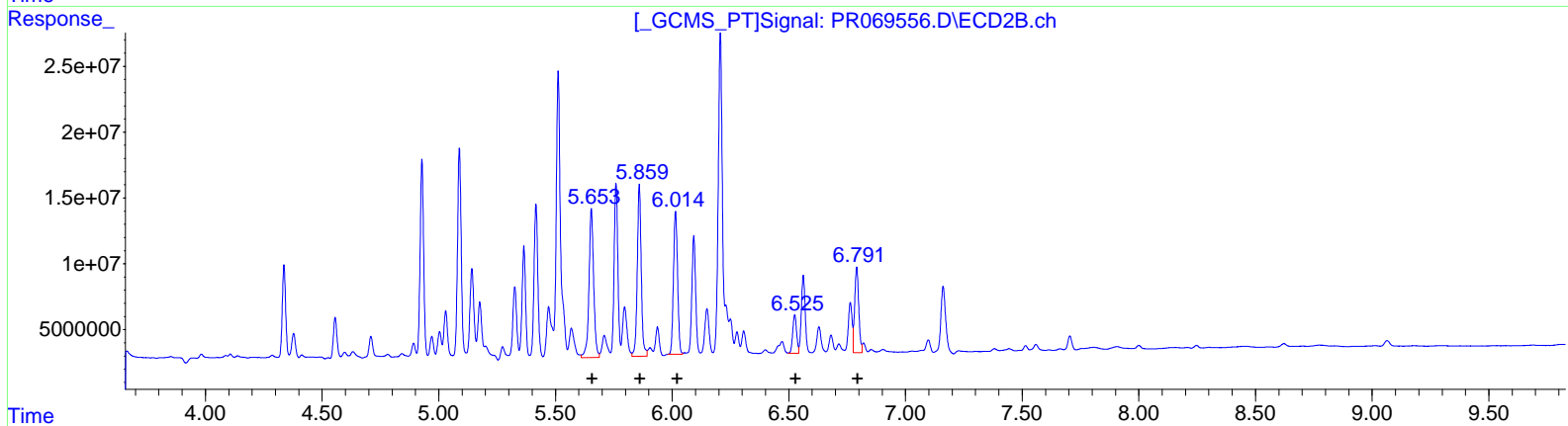
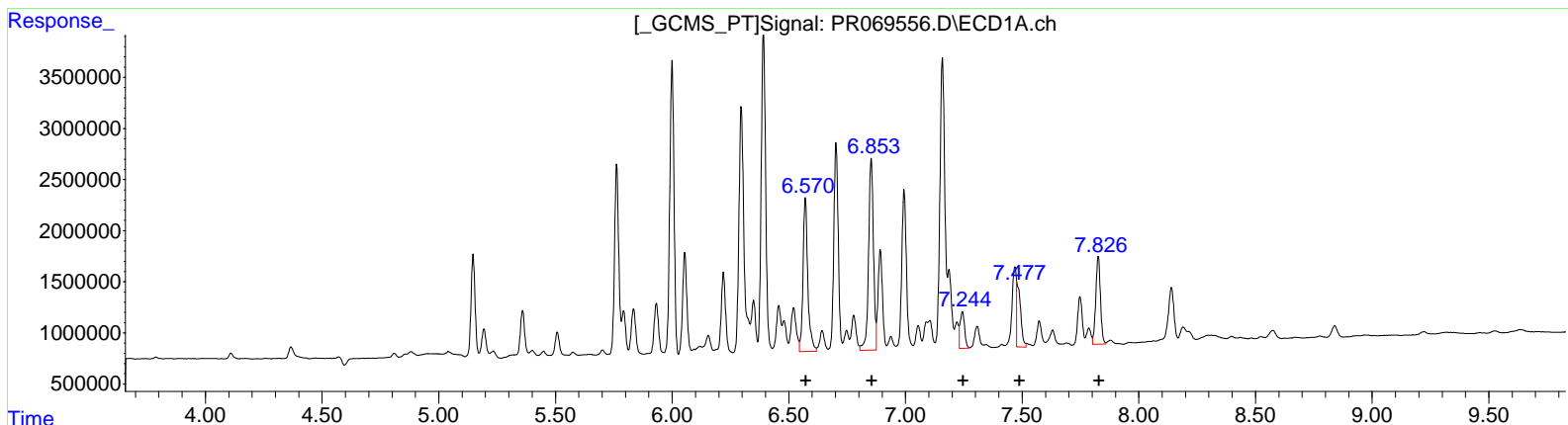
(31) AR-1260-1 (L7)			
R.T.	Response	Conc	
6.57	21375760	517.93	
6.85	27376509	573.75	
7.24	4937514	134.77	
7.47	17637805	424.04	
7.83	11901092	155.99	
(31) AR-1260-1 #2 (L7)			
R.T.	Response	Conc	
5.65	157383931	621.23	
5.86	154930721	522.76	
6.01	133338063	470.49	
6.53	33809485	139.99	
6.79	78998665	138.50	

(+) = Expected Retention Time

Data Path : Z:\pestpcbsrv\HPCHEM1\ECD\_R\Data\PR121224\  
 Data File : PR069556.D  
 Signal(s) : Signal #1: ECD1A.ch Signal #2: ECD2B.ch  
 Acq On : 12 Dec 2024 23:08  
 Operator : AJ\MA  
 Sample : P5234-06DL2 40X  
 Misc :  
 ALS Vial : 45 Sample Multiplier: 1

Integration File signal 1: autoint1.e  
 Integration File signal 2: autoint2.e  
 Quant Time: Dec 13 01:50:01 2024  
 Quant Method : Z:\pestpcbsrv\HPCHEM1\ECD\_R\Method\PR112124CLP.M  
 Quant Title : GC EXTRACTABLES  
 QLast Update : Fri Nov 22 04:30:58 2024  
 Response via : Initial Calibration  
 Integrator: ChemStation

Volume Inj. : 1 µl  
 Signal #1 Phase : ZB MR1 Signal #2 Phase: ZB MR2  
 Signal #1 Info : 30Mx0.32mmx 0.5µm Signal #2 Info : 30M x 0.32mm x 0.25µm



QEdit

(31) AR-1260-1 (L7)			
R.T.	Response	Conc	
6.57	21375760	517.93	
6.85	27376509	573.75	
7.24	4937514	134.77	
7.48	7087729	170.40	
7.83	11901092	155.99	
(31) AR-1260-1 #2 (L7)			
R.T.	Response	Conc	
5.65	157383931	621.23	
5.86	154930721	522.76	
6.01	133338063	470.49	
6.53	33809485	139.99	
6.79	78998665	138.50	

(+) = Expected Retention Time