

Data Path : Z:\pestpcbsrv\HPCHEM1\ECD\_R\Data\PR121319\  
 Data File : PR043807.D  
 Signal(s) : Signal #1: ECD1A.ch Signal #2: ECD2B.ch  
 Acq On : 13 Dec 2019 18:46  
 Operator : SM\AJ  
 Sample : K6236-17  
 Misc :  
 ALS Vial : 24 Sample Multiplier: 1

Instrument :  
 ECD\_R  
 ClientSampleId :  
 BFEZ4

Integration File signal 1: autoint1.e  
 Integration File signal 2: autoint2.e  
 Quant Time: Dec 13 22:42:30 2019  
 Quant Method : Z:\pestpcbsrv\HPCHEM1\ECD\_R\Method\PR120419CLP.M  
 Quant Title : GC EXTRACTABLES  
 QLast Update : Sat Dec 07 03:51:56 2019  
 Response via : Initial Calibration  
 Integrator: ChemStation

Volume Inj. : 1 µl  
 Signal #1 Phase : ZB MR1 Signal #2 Phase: ZB MR2  
 Signal #1 Info : 30Mx0.32mmx 0.5µm Signal #2 Info : 30M x 0.32mm x 0.25µm

Compound	RT#1	RT#2	Resp#1	Resp#2	ng/ml	ng/ml
System Monitoring Compounds						
1) SA Tetrachlo...	4.703	3.962	135.1E6	190.2E6	24.304	24.622
2) SA Decachlor...	10.606	9.049	130.7E6	244.8E6	34.711	24.741 #
Target Compounds						
3) L1 AR-1016-1	5.875	5.014f	229080	1812337	1.183	4.445 #
4) L1 AR-1016-2	5.916	5.014f	712067	1812337	2.601	3.245
5) L1 AR-1016-3	5.931f	0.000	428446	0	2.602	N.D. #
6) L1 AR-1016-4	6.083	0.000	12292866	0	89.260	N.D. #
7) L1 AR-1016-5	6.385	5.548	177358	16202976	1.284	51.029 #
8) L2 AR-1221-1	4.928	0.000	181623	0	3.166	N.D. #
9) L2 AR-1221-2	5.014	4.267	1955293	2312906	47.846	37.781
10) L2 AR-1221-3	5.101	0.000	489690	0	3.563	N.D. #
11) L3 AR-1232-1	5.101	0.000	489690	0	4.556	N.D. #
12) L3 AR-1232-2	0.000	5.014f	0	1812337	N.D.	7.767 #
13) L3 AR-1232-3	5.916	0.000	712067	0	6.280	N.D. #
14) L3 AR-1232-4	6.083	0.000	12292866	0	211.490	N.D. #
15) L3 AR-1232-5	6.167	5.548	6236950	16202976	139.688	135.319
16) L4 AR-1242-1	5.875	5.014f	229080	1812337	1.409	5.481 #
17) L4 AR-1242-2	5.916	5.014f	712067	1812337	3.121	3.964 #
18) L4 AR-1242-3	5.931f	0.000	428446	0	3.115	N.D. #
19) L4 AR-1242-4	6.083	0.000	12292866	0	107.092	N.D. #
20) L4 AR-1242-5	6.795	0.000	143086	0	1.125	N.D. #
21) L5 AR-1248-1	5.875	5.014f	229080	1812337	1.930	7.406 #
22) L5 AR-1248-2	6.167	0.000	6236950	0	38.282	N.D. #
23) L5 AR-1248-3	6.385	0.000	177358	0	0.977	N.D. #
24) L5 AR-1248-4	6.781	5.548	73987	16202976	0.353	39.081 #
25) L5 AR-1248-5	6.795	0.000	143086	0	0.721	N.D. #
26) L6 AR-1254-1	6.740	0.000	961223	0	4.398	N.D. #
27) L6 AR-1254-2	6.970	0.000	422459	0	1.253	N.D. #
28) L6 AR-1254-3	7.331	0.000	8321582	0	23.791	N.D. #
29) L6 AR-1254-4	7.669f	6.642	5362286	846489	21.459	1.176 #
30) L6 AR-1254-5	8.026	0.000	1521687	0	5.905	N.D. #
31) L7 AR-1260-1	7.480	0.000	1387231	0	5.567	N.D. #
32) L7 AR-1260-2	7.737	0.000	1729848	0	5.822	N.D. #
33) L7 AR-1260-3	8.114	0.000	453045	0	2.045	N.D. #
34) L7 AR-1260-4	8.292f	0.000	99680	0	0.396	N.D. #
35) L7 AR-1260-5	8.673	0.000	1298310	0	2.692	N.D. #
36) L8 AR-1262-1	8.158	0.000	2508982	0	18.847	N.D. #
37) L8 AR-1262-2	8.673	0.000	1298310	0	2.279	N.D. #
38) L8 AR-1262-3	9.010	0.000	561057	0	1.550	N.D. #
39) L8 AR-1262-4	9.115	0.000	679964	0	2.555	N.D. #
40) L8 AR-1262-5	9.857f	0.000	330413	0	1.755	N.D. #
41) L9 AR-1268-1	9.010	0.000	561057	0	0.877	N.D. #

Data Path : Z:\pestpcbsrv\HPCHEM1\ECD\_R\Data\PR121319\  
 Data File : PR043807.D  
 Signal(s) : Signal #1: ECD1A.ch Signal #2: ECD2B.ch  
 Acq On : 13 Dec 2019 18:46  
 Operator : SM\AJ  
 Sample : K6236-17  
 Misc :  
 ALS Vial : 24 Sample Multiplier: 1

Instrument :  
 ECD\_R  
 ClientSampleId :  
 BFEZ4

Integration File signal 1: autoint1.e  
 Integration File signal 2: autoint2.e  
 Quant Time: Dec 13 22:42:30 2019  
 Quant Method : Z:\pestpcbsrv\HPCHEM1\ECD\_R\Method\PR120419CLP.M  
 Quant Title : GC EXTRACTABLES  
 QLast Update : Sat Dec 07 03:51:56 2019  
 Response via : Initial Calibration  
 Integrator: ChemStation

Volume Inj. : 1 µl  
 Signal #1 Phase : ZB MR1 Signal #2 Phase: ZB MR2  
 Signal #1 Info : 30Mx0.32mmx 0.5µm Signal #2 Info : 30M x 0.32mm x 0.25µm

	Compound	RT#1	RT#2	Resp#1	Resp#2	ng/ml	ng/ml
42)	L9 AR-1268-2	9.115	0.000	679964	0	1.180	N.D. #
43)	L9 AR-1268-3	9.349	0.000	1663544	0	3.534	N.D. #
44)	L9 AR-1268-4	9.857f	0.000	330413	0	1.617	N.D. #
45)	L9 AR-1268-5	10.245	8.774	1153971	2895051	0.738	0.684

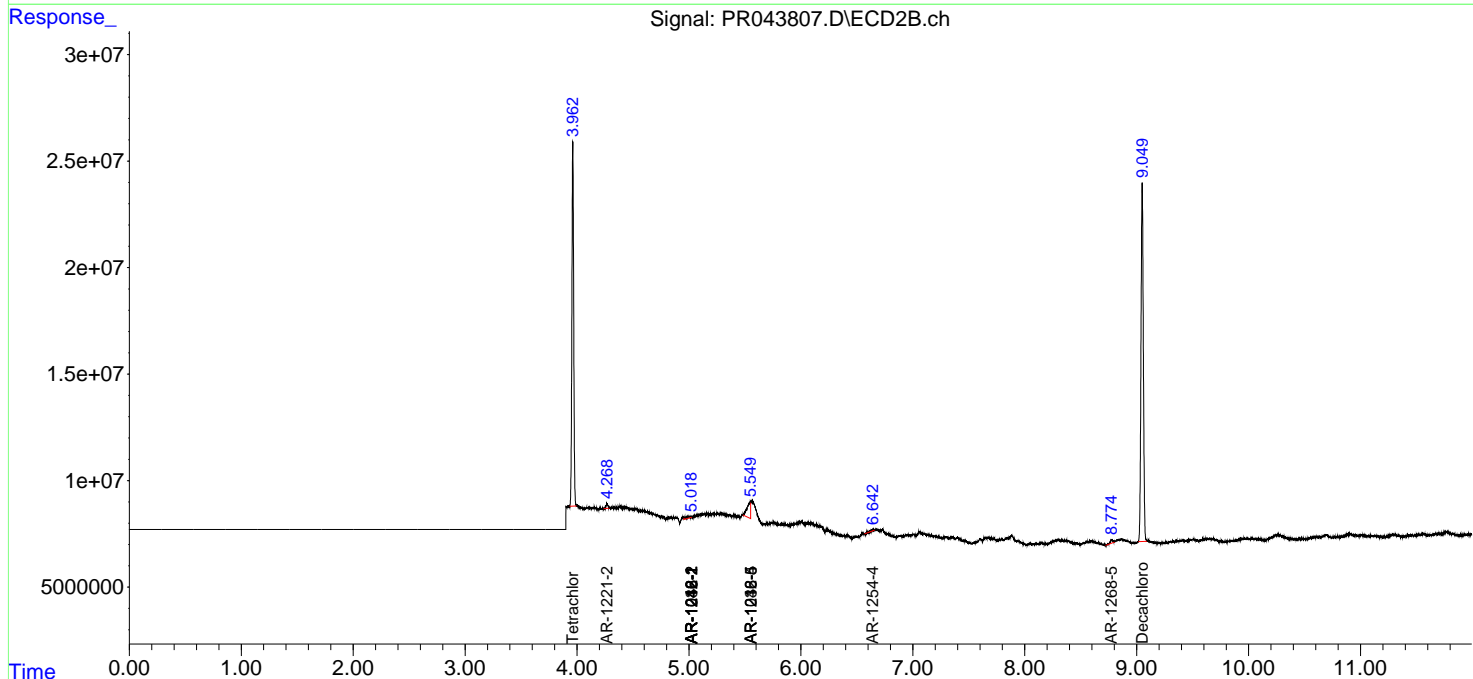
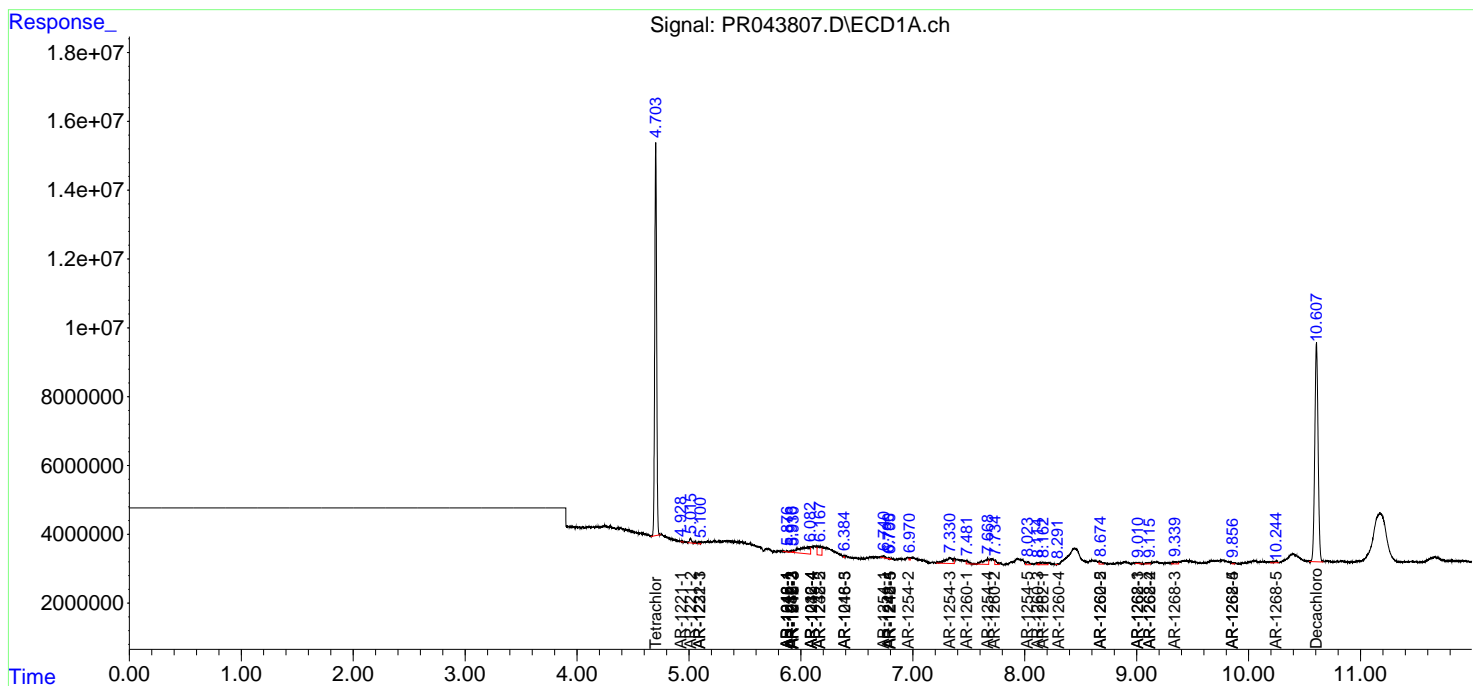
(f)=RT Delta > 1/2 Window (#)=Amounts differ by > 25% (m)=manual int.

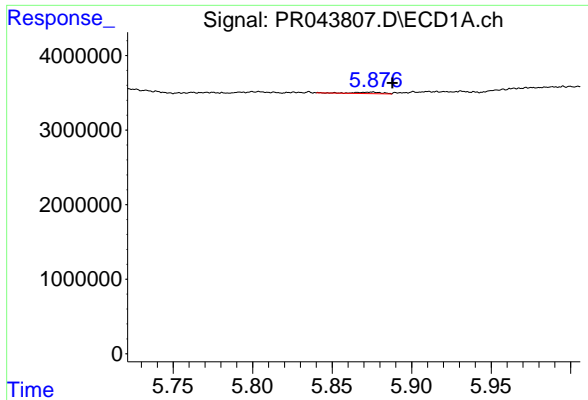
Data Path : Z:\pestpcbsrv\HPCHEM1\ECD\_R\Data\PR121319\  
 Data File : PR043807.D  
 Signal(s) : Signal #1: ECD1A.ch Signal #2: ECD2B.ch  
 Acq On : 13 Dec 2019 18:46  
 Operator : SM\AJ  
 Sample : K6236-17  
 Misc :  
 ALS Vial : 24 Sample Multiplier: 1

Instrument :  
 ECD\_R  
 ClientSampled :  
 BFEZ4

Integration File signal 1: autoint1.e  
 Integration File signal 2: autoint2.e  
 Quant Time: Dec 13 22:42:30 2019  
 Quant Method : Z:\pestpcbsrv\HPCHEM1\ECD\_R\Method\PR120419CLP.M  
 Quant Title : GC EXTRACTABLES  
 QLast Update : Sat Dec 07 03:51:56 2019  
 Response via : Initial Calibration  
 Integrator: ChemStation

Volume Inj. : 1 µl  
 Signal #1 Phase : ZB MR1 Signal #2 Phase: ZB MR2  
 Signal #1 Info : 30Mx0.32mmx 0.5µm Signal #2 Info : 30M x 0.32mm x 0.25µm

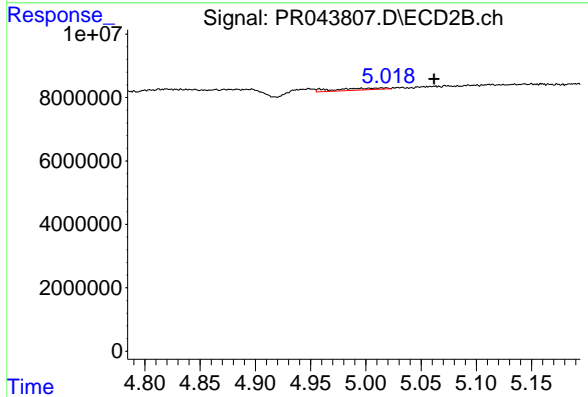




#3 AR-1016-1

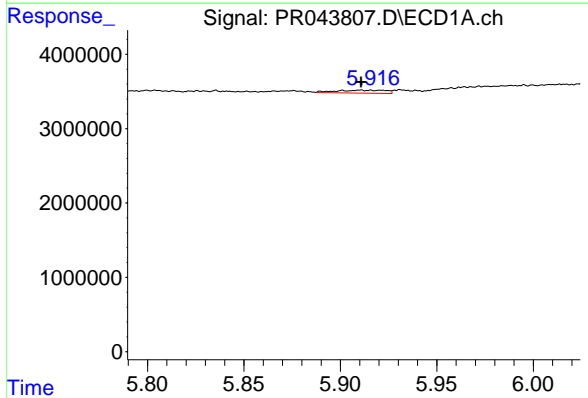
R.T.: 5.875 min  
 Delta R.T.: -0.012 min  
 Response: 229080  
 Conc: 1.18 ng/ml

Instrument :  
 ECD\_R  
 ClientSampled :  
 BFEZ4



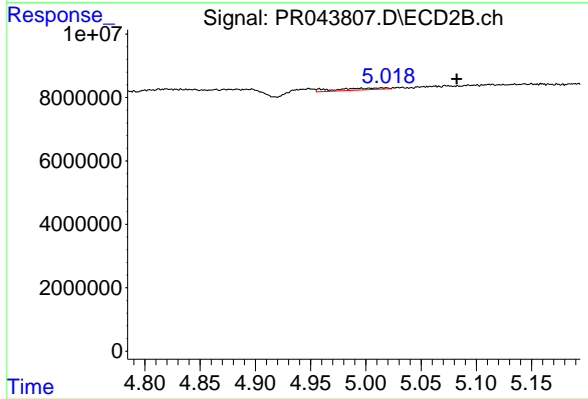
#3 AR-1016-1

R.T.: 5.014 min  
 Delta R.T.: -0.048 min  
 Response: 1812337  
 Conc: 4.45 ng/ml



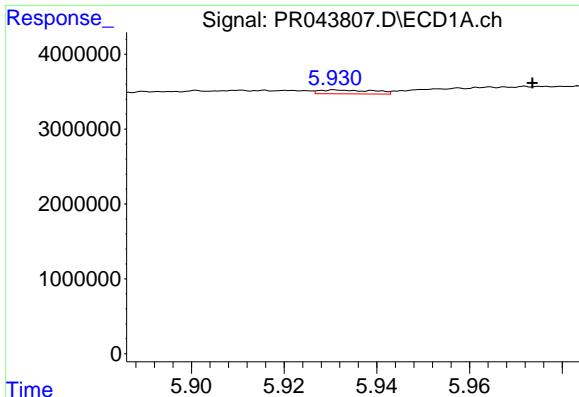
#4 AR-1016-2

R.T.: 5.916 min  
 Delta R.T.: 0.005 min  
 Response: 712067  
 Conc: 2.60 ng/ml



#4 AR-1016-2

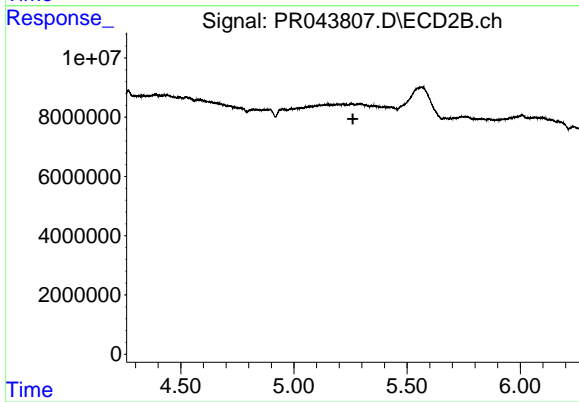
R.T.: 5.014 min  
 Delta R.T.: -0.068 min  
 Response: 1812337  
 Conc: 3.24 ng/ml



#5 AR-1016-3

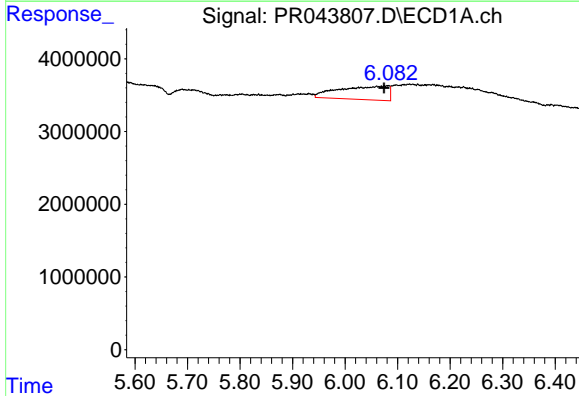
R.T.: 5.931 min  
 Delta R.T.: -0.042 min  
 Response: 428446  
 Conc: 2.60 ng/ml

Instrument :  
 ECD\_R  
 ClientSampled :  
 BFEZ4



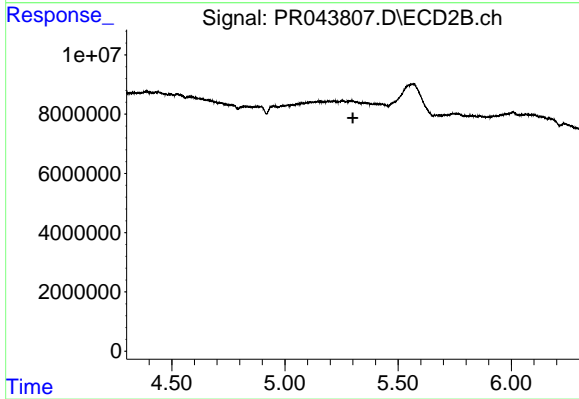
#5 AR-1016-3

R.T.: 0.000 min  
 Exp R.T. : 5.260 min  
 Response: 0  
 Conc: N.D.



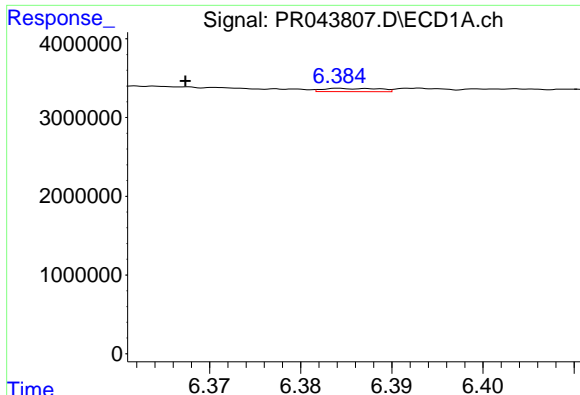
#6 AR-1016-4

R.T.: 6.083 min  
 Delta R.T.: 0.009 min  
 Response: 12292866  
 Conc: 89.26 ng/ml



#6 AR-1016-4

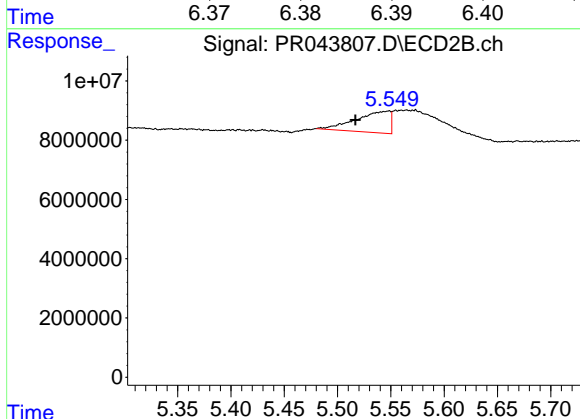
R.T.: 0.000 min  
 Exp R.T. : 5.300 min  
 Response: 0  
 Conc: N.D.



#7 AR-1016-5

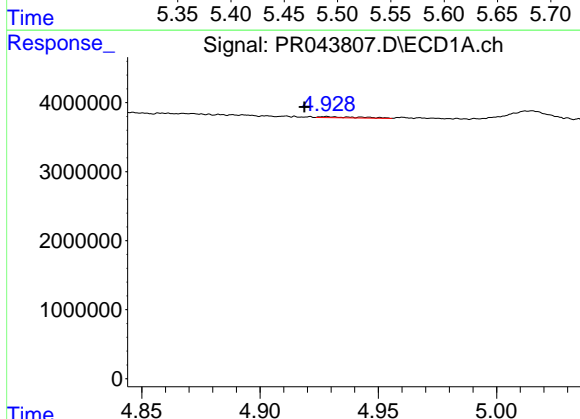
R.T.: 6.385 min  
 Delta R.T.: 0.018 min  
 Response: 177358  
 Conc: 1.28 ng/ml

Instrument :  
 ECD\_R  
 ClientSampleId :  
 BFEZ4



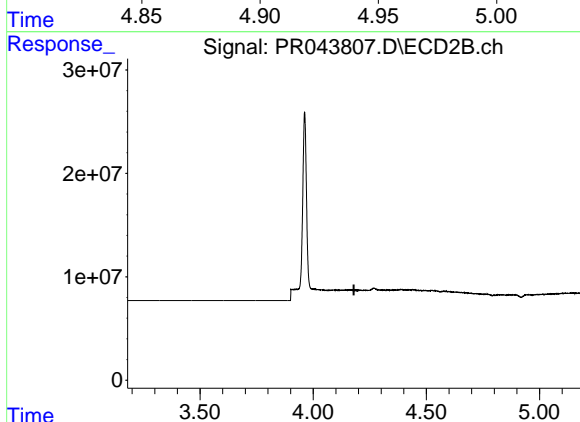
#7 AR-1016-5

R.T.: 5.548 min  
 Delta R.T.: 0.032 min  
 Response: 16202976  
 Conc: 51.03 ng/ml



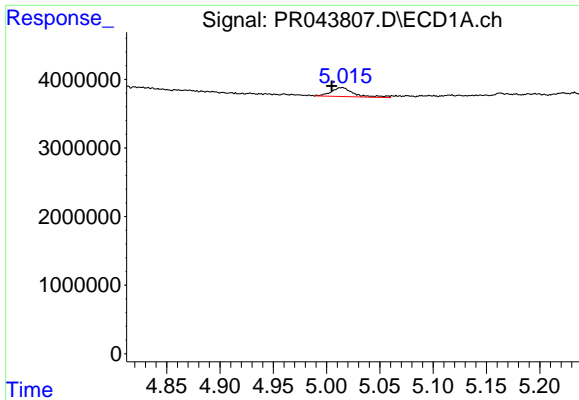
#8 AR-1221-1

R.T.: 4.928 min  
 Delta R.T.: 0.009 min  
 Response: 181623  
 Conc: 3.17 ng/ml



#8 AR-1221-1

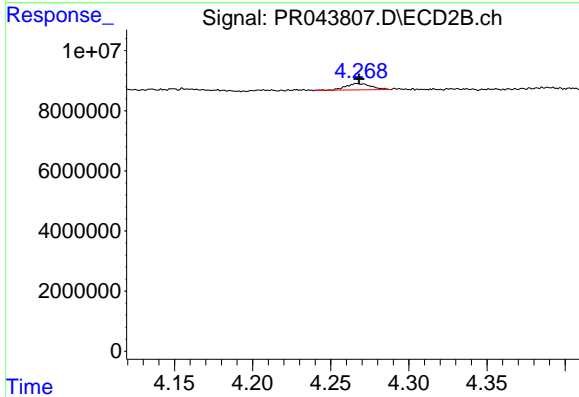
R.T.: 0.000 min  
 Exp R.T. : 4.180 min  
 Response: 0  
 Conc: N.D.



#9 AR-1221-2

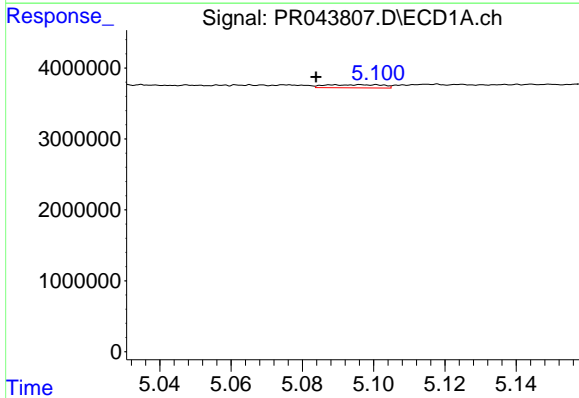
R.T.: 5.014 min  
 Delta R.T.: 0.010 min  
 Response: 1955293  
 Conc: 47.85 ng/ml

Instrument :  
 ECD\_R  
 ClientSampleId :  
 BFEZ4



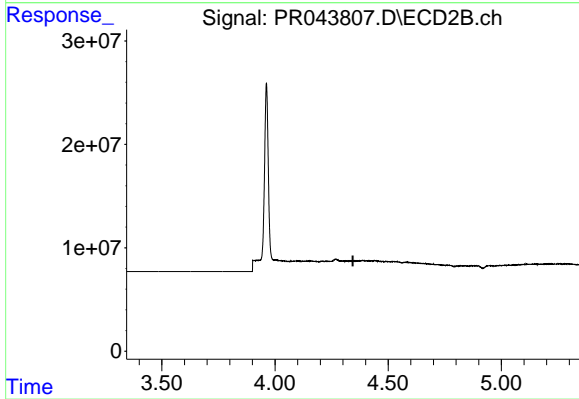
#9 AR-1221-2

R.T.: 4.267 min  
 Delta R.T.: -0.001 min  
 Response: 2312906  
 Conc: 37.78 ng/ml



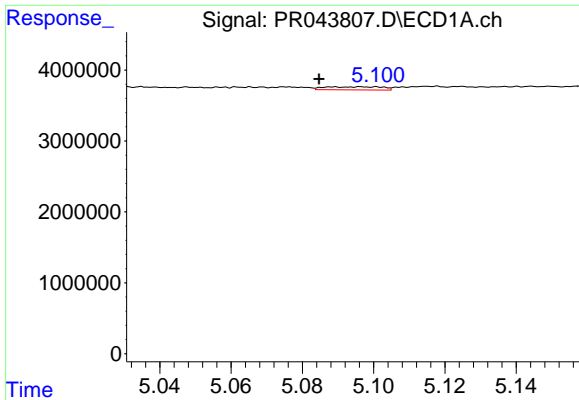
#10 AR-1221-3

R.T.: 5.101 min  
 Delta R.T.: 0.017 min  
 Response: 489690  
 Conc: 3.56 ng/ml



#10 AR-1221-3

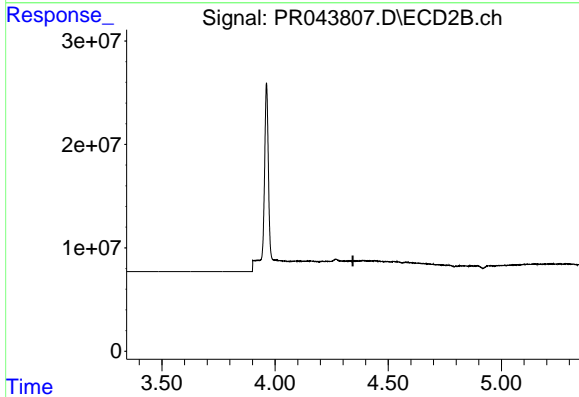
R.T.: 0.000 min  
 Exp R.T. : 4.344 min  
 Response: 0  
 Conc: N.D.



#11 AR-1232-1

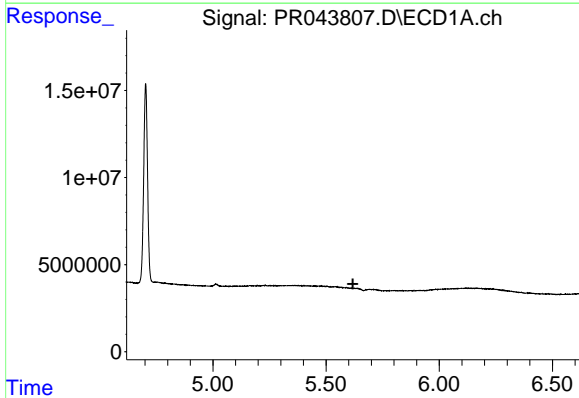
R.T.: 5.101 min  
 Delta R.T.: 0.016 min  
 Response: 489690  
 Conc: 4.56 ng/ml

Instrument :  
 ECD\_R  
 ClientSampled :  
 BFEZ4



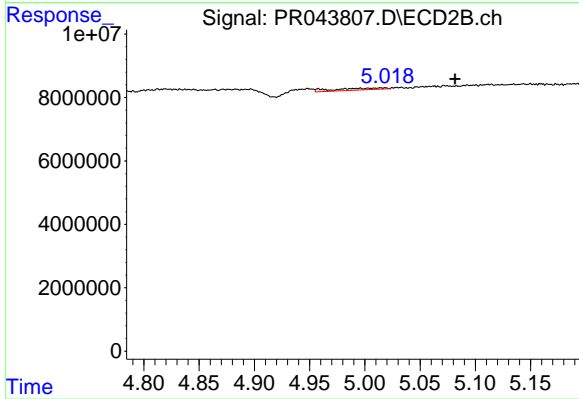
#11 AR-1232-1

R.T.: 0.000 min  
 Exp R.T. : 4.344 min  
 Response: 0  
 Conc: N.D.



#12 AR-1232-2

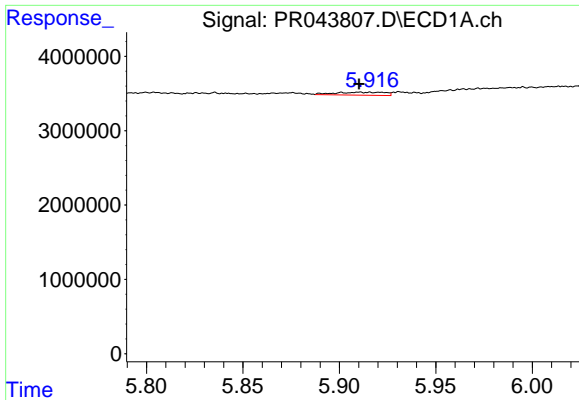
R.T.: 0.000 min  
 Exp R.T. : 5.618 min  
 Response: 0  
 Conc: N.D.



#12 AR-1232-2

R.T.: 5.014 min  
 Delta R.T.: -0.067 min  
 Response: 1812337  
 Conc: 7.77 ng/ml

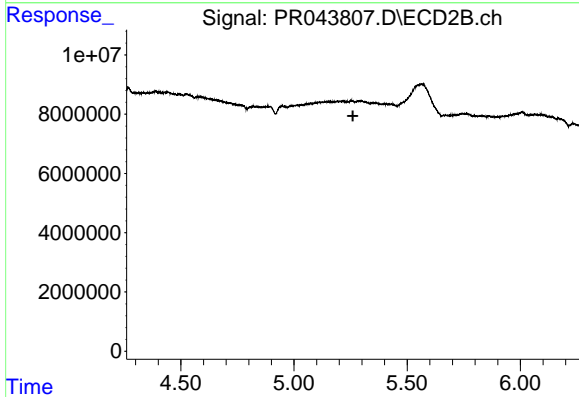




#13 AR-1232-3

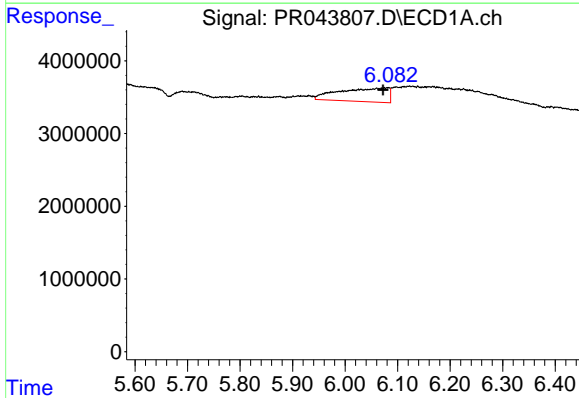
R.T.: 5.916 min  
 Delta R.T.: 0.006 min  
 Response: 712067  
 Conc: 6.28 ng/ml

Instrument :  
 ECD\_R  
 ClientSampleId :  
 BFEZ4



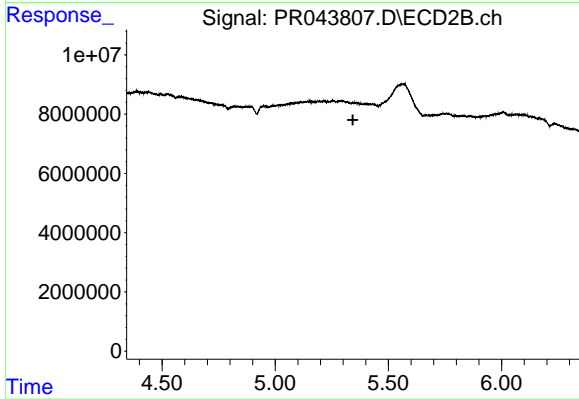
#13 AR-1232-3

R.T.: 0.000 min  
 Exp R.T. : 5.260 min  
 Response: 0  
 Conc: N.D.



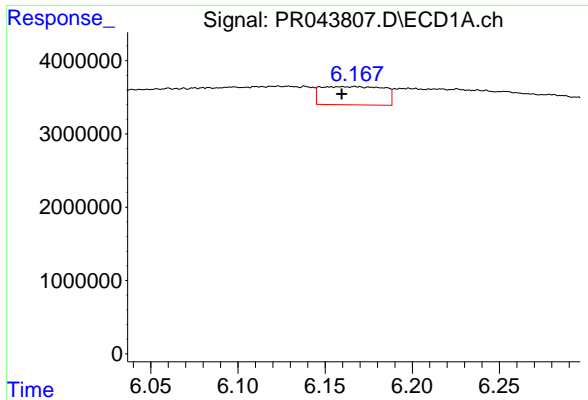
#14 AR-1232-4

R.T.: 6.083 min  
 Delta R.T.: 0.010 min  
 Response: 12292866  
 Conc: 211.49 ng/ml



#14 AR-1232-4

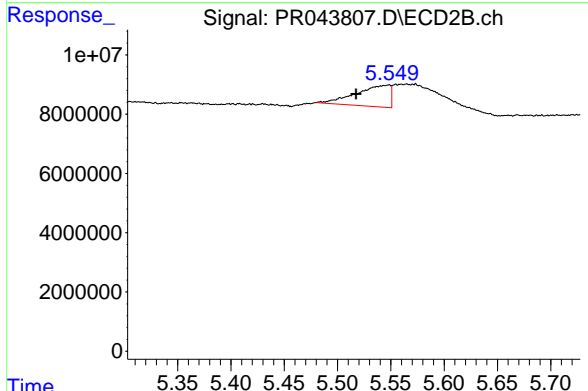
R.T.: 0.000 min  
 Exp R.T. : 5.343 min  
 Response: 0  
 Conc: N.D.



#15 AR-1232-5

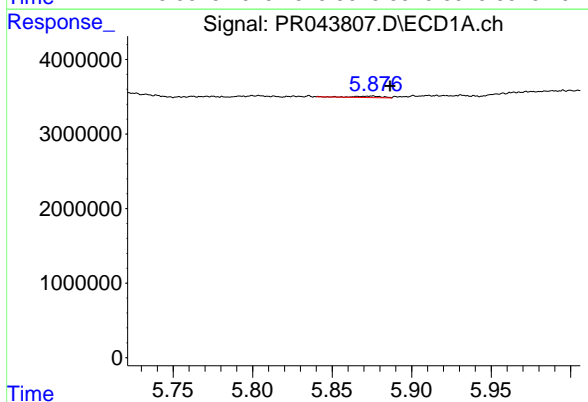
R.T.: 6.167 min  
 Delta R.T.: 0.008 min  
 Response: 6236950  
 Conc: 139.69 ng/ml

Instrument :  
 ECD\_R  
 ClientSampleId :  
 BFEZ4



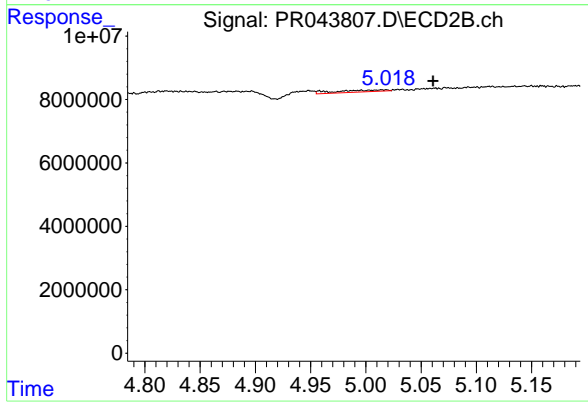
#15 AR-1232-5

R.T.: 5.548 min  
 Delta R.T.: 0.031 min  
 Response: 16202976  
 Conc: 135.32 ng/ml



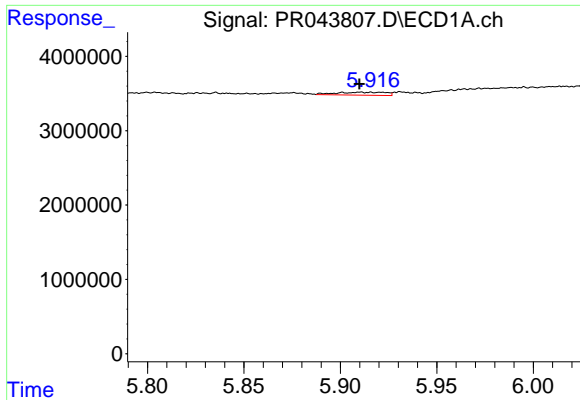
#16 AR-1242-1

R.T.: 5.875 min  
 Delta R.T.: -0.011 min  
 Response: 229080  
 Conc: 1.41 ng/ml



#16 AR-1242-1

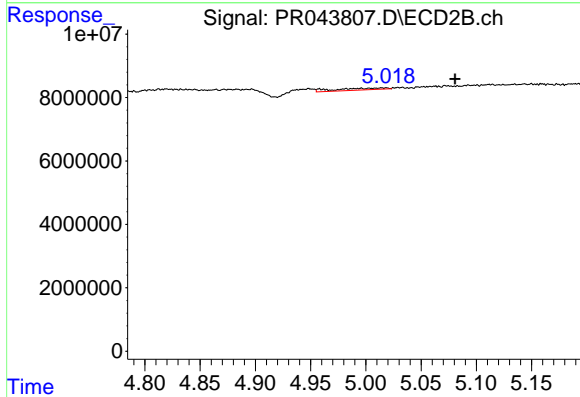
R.T.: 5.014 min  
 Delta R.T.: -0.046 min  
 Response: 1812337  
 Conc: 5.48 ng/ml



#17 AR-1242-2

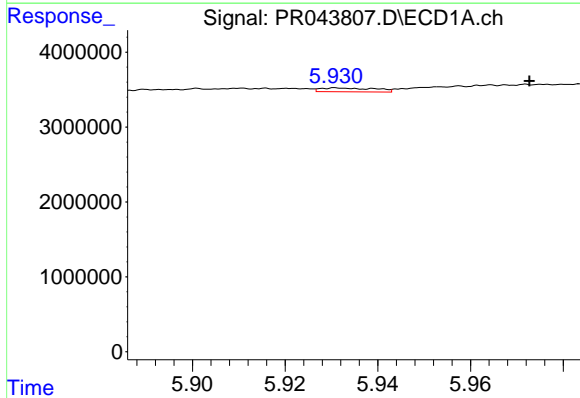
R.T.: 5.916 min  
 Delta R.T.: 0.006 min  
 Response: 712067  
 Conc: 3.12 ng/ml

Instrument :  
 ECD\_R  
 ClientSampleId :  
 BFEZ4



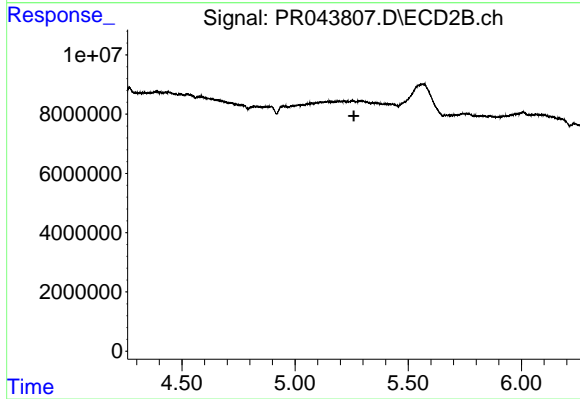
#17 AR-1242-2

R.T.: 5.014 min  
 Delta R.T.: -0.067 min  
 Response: 1812337  
 Conc: 3.96 ng/ml



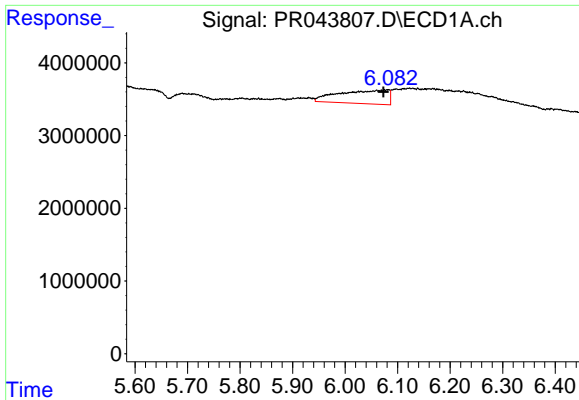
#18 AR-1242-3

R.T.: 5.931 min  
 Delta R.T.: -0.042 min  
 Response: 428446  
 Conc: 3.11 ng/ml



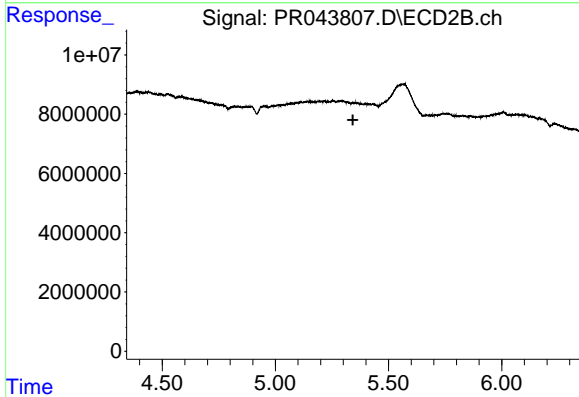
#18 AR-1242-3

R.T.: 0.000 min  
 Exp R.T.: 5.260 min  
 Response: 0  
 Conc: N.D.

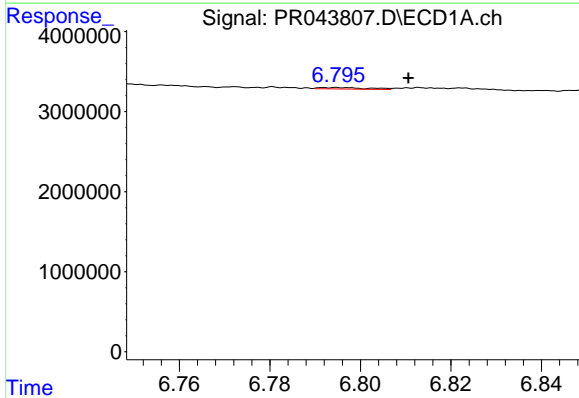


#19 AR-1242-4  
 R.T.: 6.083 min  
 Delta R.T.: 0.010 min  
 Response: 12292866  
 Conc: 107.09 ng/ml

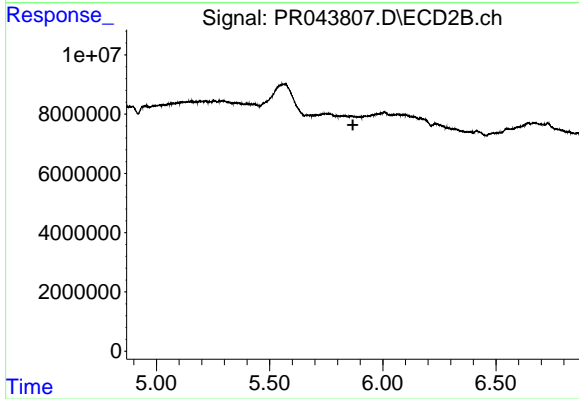
**Instrument :**  
 ECD\_R  
**ClientSampled :**  
 BFEZ4



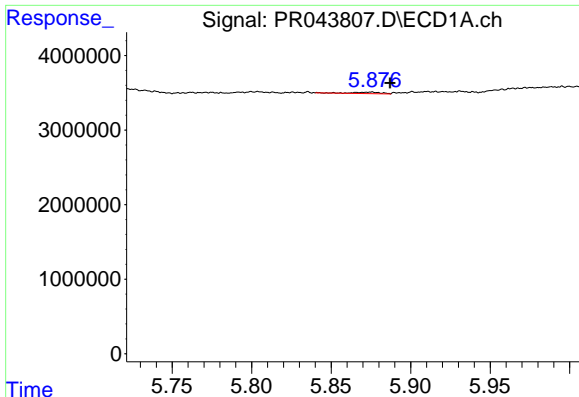
#19 AR-1242-4  
 R.T.: 0.000 min  
 Exp R.T. : 5.343 min  
 Response: 0  
 Conc: N.D.



#20 AR-1242-5  
 R.T.: 6.795 min  
 Delta R.T.: -0.016 min  
 Response: 143086  
 Conc: 1.12 ng/ml



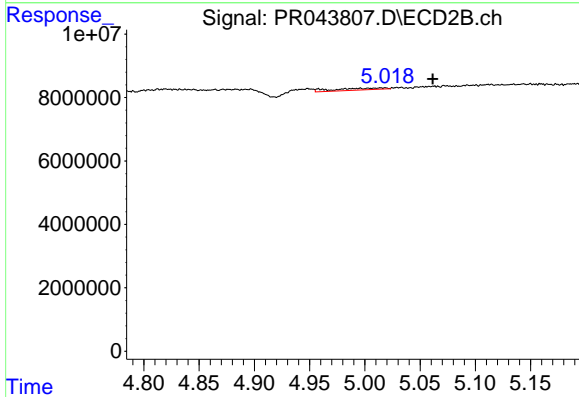
#20 AR-1242-5  
 R.T.: 0.000 min  
 Exp R.T. : 5.868 min  
 Response: 0  
 Conc: N.D.



#21 AR-1248-1

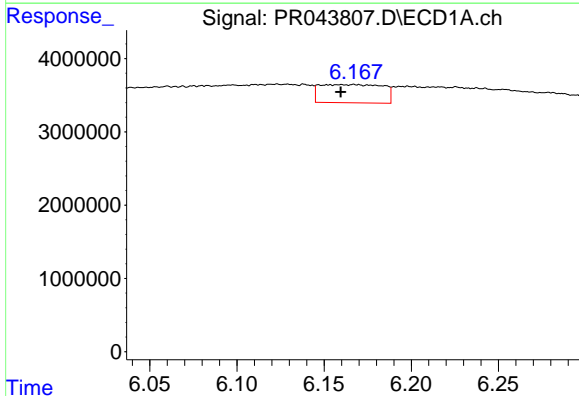
R.T.: 5.875 min  
 Delta R.T.: -0.012 min  
 Response: 229080  
 Conc: 1.93 ng/ml

Instrument :  
 ECD\_R  
 ClientSampleId :  
 BFEZ4



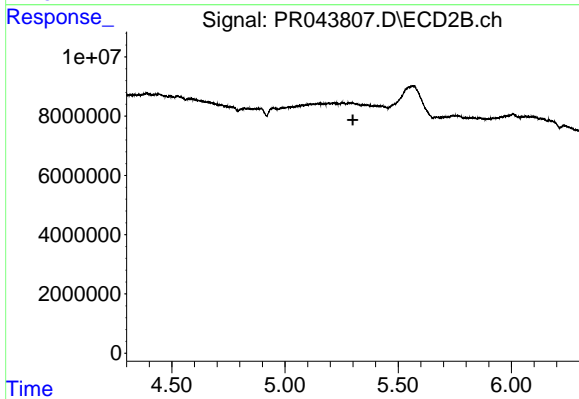
#21 AR-1248-1

R.T.: 5.014 min  
 Delta R.T.: -0.047 min  
 Response: 1812337  
 Conc: 7.41 ng/ml



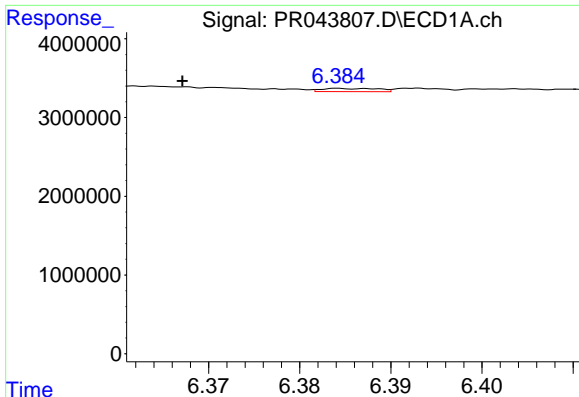
#22 AR-1248-2

R.T.: 6.167 min  
 Delta R.T.: 0.008 min  
 Response: 6236950  
 Conc: 38.28 ng/ml



#22 AR-1248-2

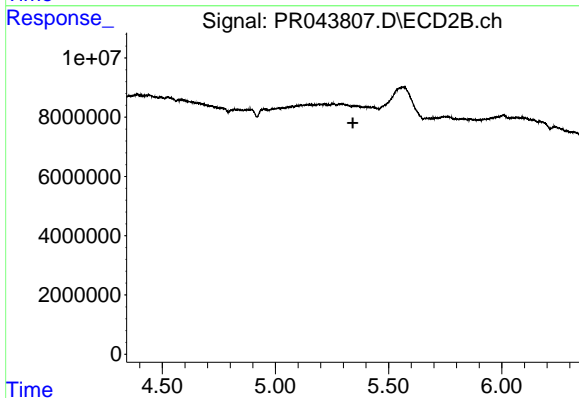
R.T.: 0.000 min  
 Exp R.T. : 5.300 min  
 Response: 0  
 Conc: N.D.



#23 AR-1248-3

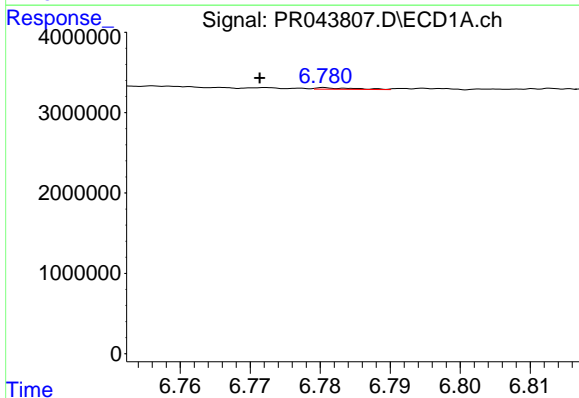
R.T.: 6.385 min  
 Delta R.T.: 0.018 min  
 Response: 177358  
 Conc: 0.98 ng/ml

Instrument :  
 ECD\_R  
 ClientSampled :  
 BFEZ4



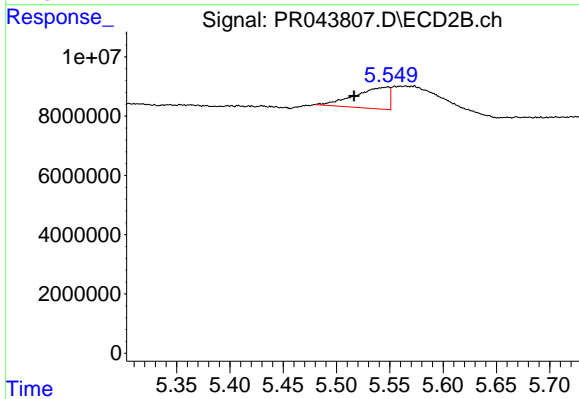
#23 AR-1248-3

R.T.: 0.000 min  
 Exp R.T. : 5.342 min  
 Response: 0  
 Conc: N.D.



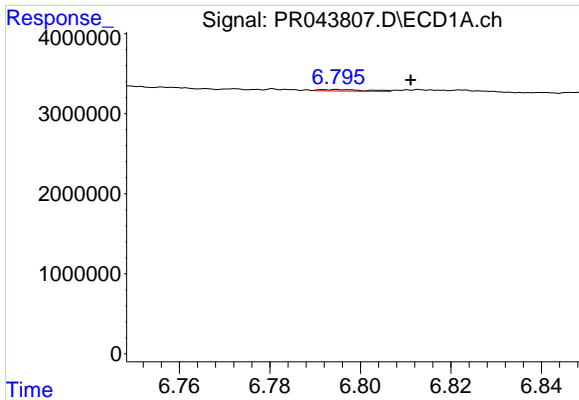
#24 AR-1248-4

R.T.: 6.781 min  
 Delta R.T.: 0.010 min  
 Response: 73987  
 Conc: 0.35 ng/ml



#24 AR-1248-4

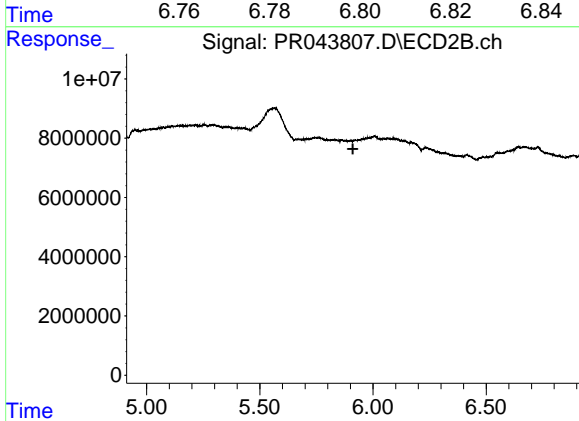
R.T.: 5.548 min  
 Delta R.T.: 0.032 min  
 Response: 16202976  
 Conc: 39.08 ng/ml



#25 AR-1248-5

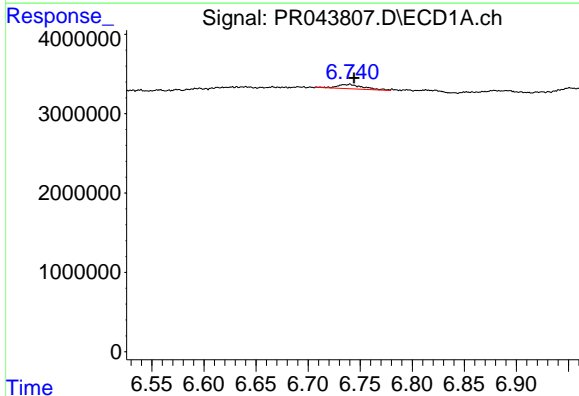
R.T.: 6.795 min  
 Delta R.T.: -0.016 min  
 Response: 143086  
 Conc: 0.72 ng/ml

**Instrument :**  
 ECD\_R  
**ClientSampled :**  
 BFEZ4



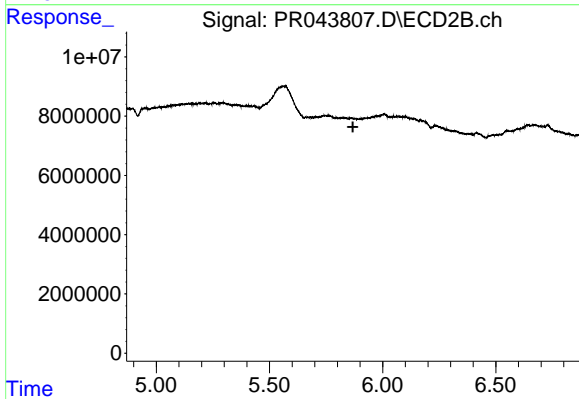
#25 AR-1248-5

R.T.: 0.000 min  
 Exp R.T. : 5.911 min  
 Response: 0  
 Conc: N.D.



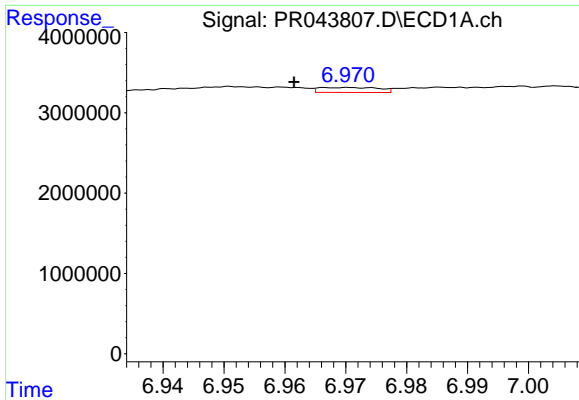
#26 AR-1254-1

R.T.: 6.740 min  
 Delta R.T.: -0.004 min  
 Response: 961223  
 Conc: 4.40 ng/ml



#26 AR-1254-1

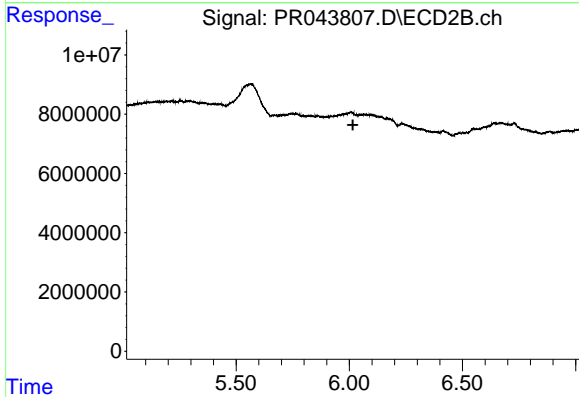
R.T.: 0.000 min  
 Exp R.T. : 5.868 min  
 Response: 0  
 Conc: N.D.



#27 AR-1254-2

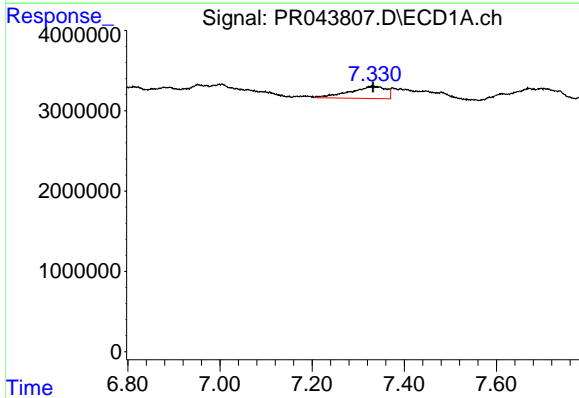
R.T.: 6.970 min  
 Delta R.T.: 0.008 min  
 Response: 422459  
 Conc: 1.25 ng/ml

Instrument :  
 ECD\_R  
 ClientSampled :  
 BFEZ4



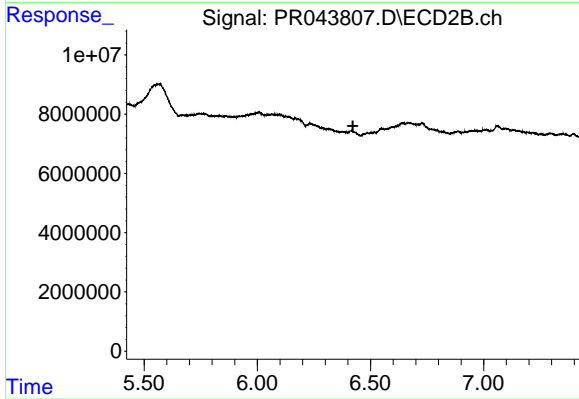
#27 AR-1254-2

R.T.: 0.000 min  
 Exp R.T. : 6.016 min  
 Response: 0  
 Conc: N.D.



#28 AR-1254-3

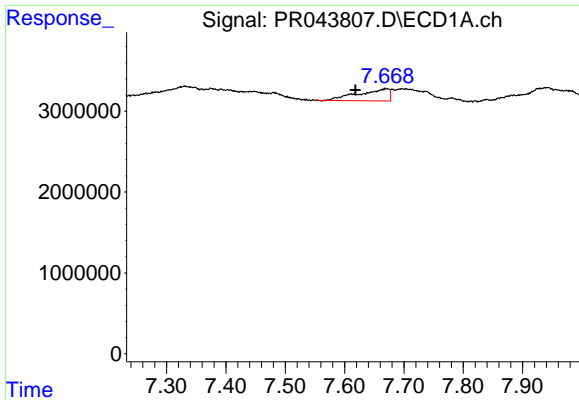
R.T.: 7.331 min  
 Delta R.T.: -0.002 min  
 Response: 8321582  
 Conc: 23.79 ng/ml



#28 AR-1254-3

R.T.: 0.000 min  
 Exp R.T. : 6.422 min  
 Response: 0  
 Conc: N.D.

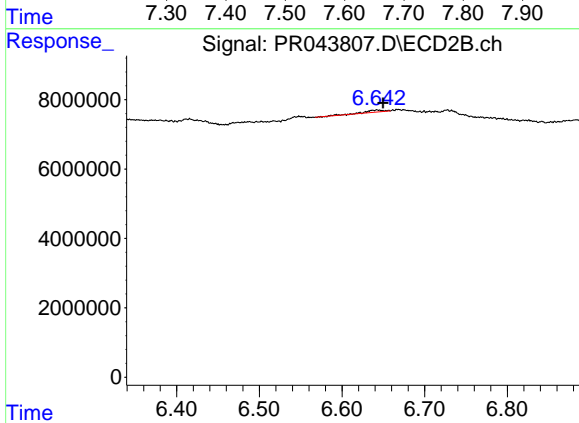




#29 AR-1254-4

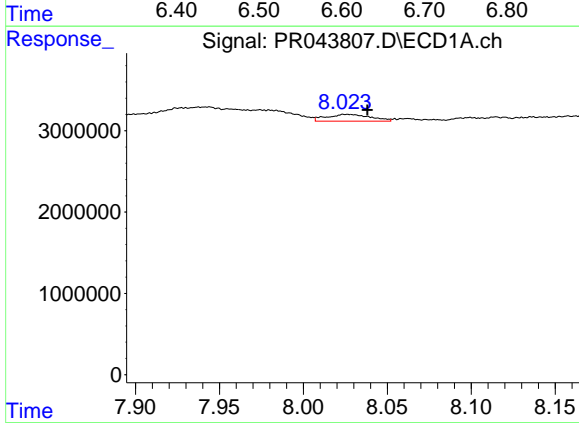
R.T.: 7.669 min  
 Delta R.T.: 0.051 min  
 Response: 5362286  
 Conc: 21.46 ng/ml

Instrument :  
 ECD\_R  
 ClientSampled :  
 BFEZ4



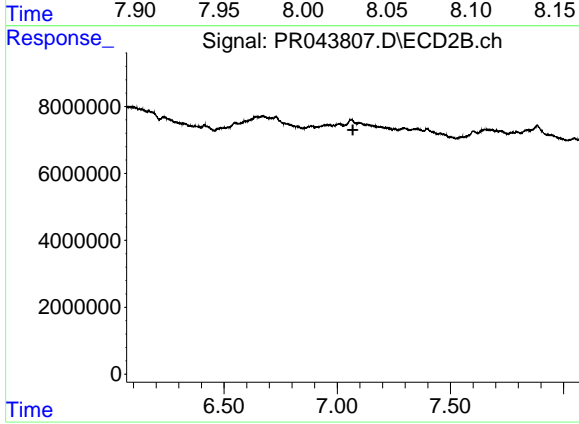
#29 AR-1254-4

R.T.: 6.642 min  
 Delta R.T.: -0.007 min  
 Response: 846489  
 Conc: 1.18 ng/ml



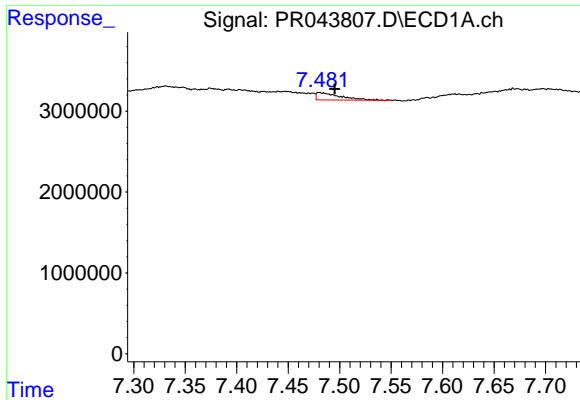
#30 AR-1254-5

R.T.: 8.026 min  
 Delta R.T.: -0.012 min  
 Response: 1521687  
 Conc: 5.90 ng/ml



#30 AR-1254-5

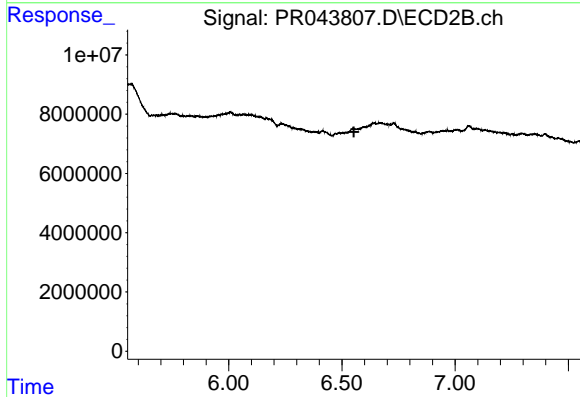
R.T.: 0.000 min  
 Exp R.T. : 7.069 min  
 Response: 0  
 Conc: N.D.



#31 AR-1260-1

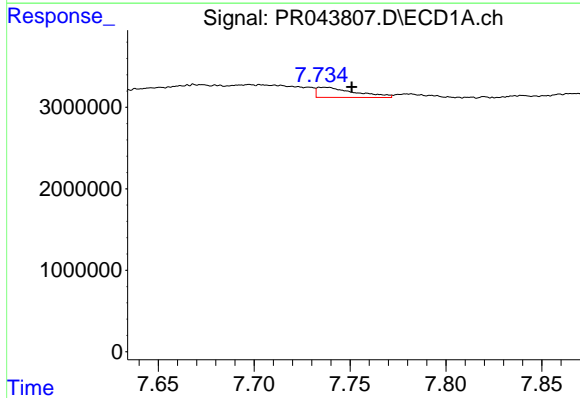
R.T.: 7.480 min  
 Delta R.T.: -0.015 min  
 Response: 1387231  
 Conc: 5.57 ng/ml

Instrument :  
 ECD\_R  
 ClientSampleId :  
 BFEZ4



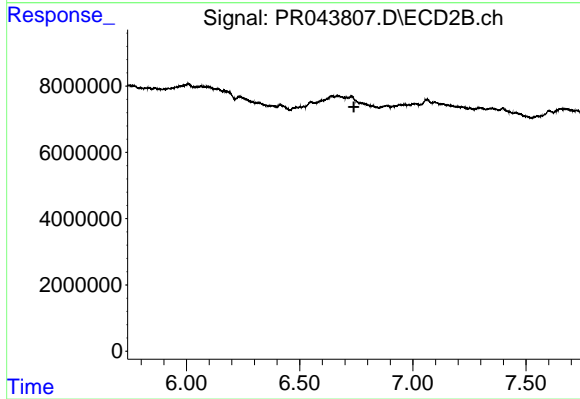
#31 AR-1260-1

R.T.: 0.000 min  
 Exp R.T. : 6.553 min  
 Response: 0  
 Conc: N.D.



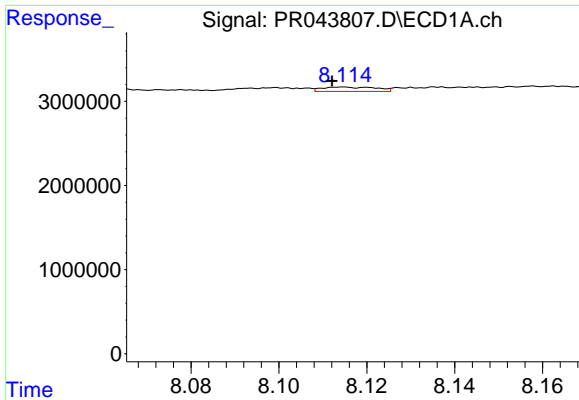
#32 AR-1260-2

R.T.: 7.737 min  
 Delta R.T.: -0.014 min  
 Response: 1729848  
 Conc: 5.82 ng/ml



#32 AR-1260-2

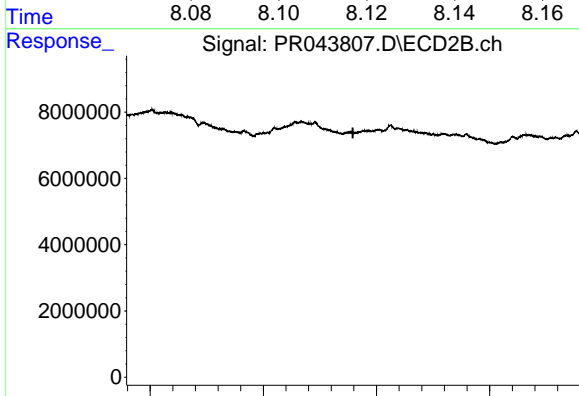
R.T.: 0.000 min  
 Exp R.T. : 6.740 min  
 Response: 0  
 Conc: N.D.



#33 AR-1260-3

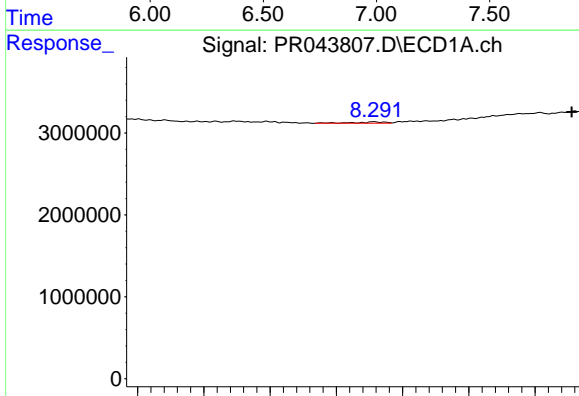
R.T.: 8.114 min  
 Delta R.T.: 0.002 min  
 Response: 453045  
 Conc: 2.04 ng/ml

Instrument :  
 ECD\_R  
 ClientSampled :  
 BFEZ4



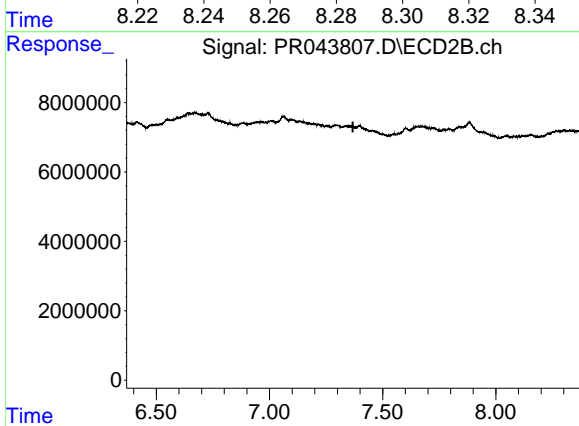
#33 AR-1260-3

R.T.: 0.000 min  
 Exp R.T. : 6.896 min  
 Response: 0  
 Conc: N.D.



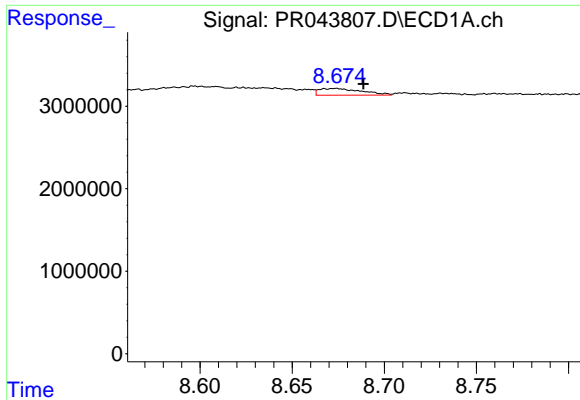
#34 AR-1260-4

R.T.: 8.292 min  
 Delta R.T.: -0.059 min  
 Response: 99680  
 Conc: 0.40 ng/ml



#34 AR-1260-4

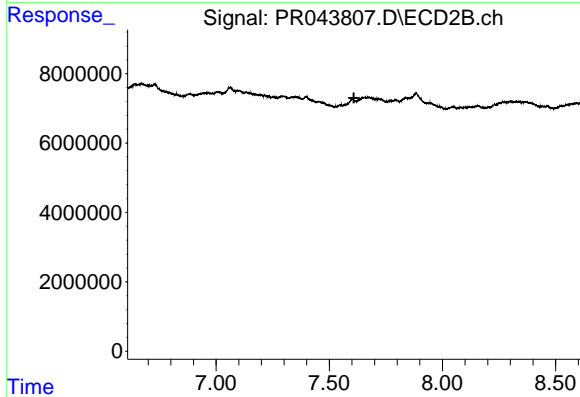
R.T.: 0.000 min  
 Exp R.T. : 7.369 min  
 Response: 0  
 Conc: N.D.



#35 AR-1260-5

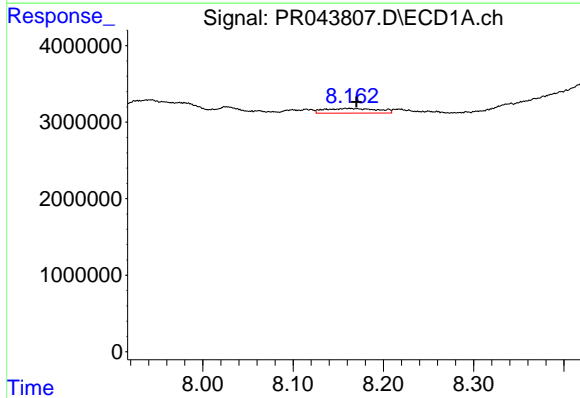
R.T.: 8.673 min  
 Delta R.T.: -0.015 min  
 Response: 1298310  
 Conc: 2.69 ng/ml

Instrument :  
 ECD\_R  
 ClientSampleId :  
 BFEZ4



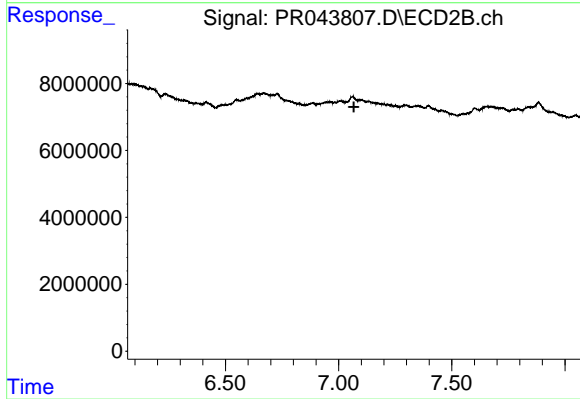
#35 AR-1260-5

R.T.: 0.000 min  
 Exp R.T. : 7.609 min  
 Response: 0  
 Conc: N.D.



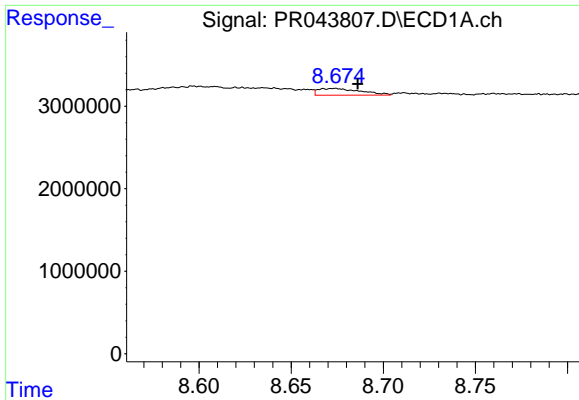
#36 AR-1262-1

R.T.: 8.158 min  
 Delta R.T.: -0.012 min  
 Response: 2508982  
 Conc: 18.85 ng/ml



#36 AR-1262-1

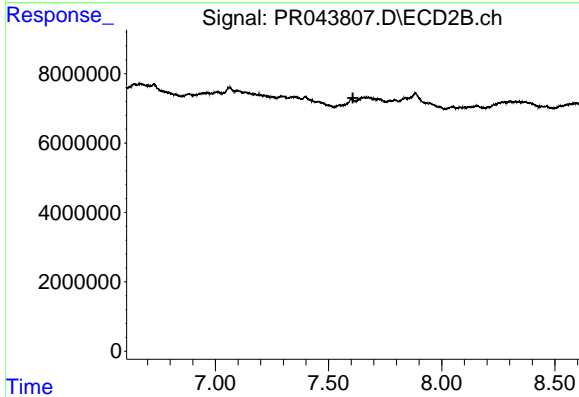
R.T.: 0.000 min  
 Exp R.T. : 7.067 min  
 Response: 0  
 Conc: N.D.



#37 AR-1262-2

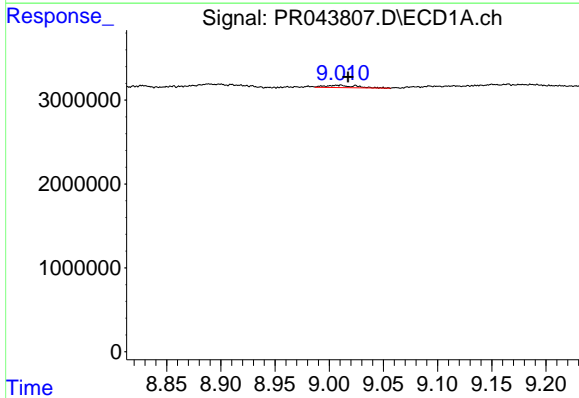
R.T.: 8.673 min  
 Delta R.T.: -0.013 min  
 Response: 1298310  
 Conc: 2.28 ng/ml

Instrument :  
 ECD\_R  
 ClientSampleId :  
 BFEZ4



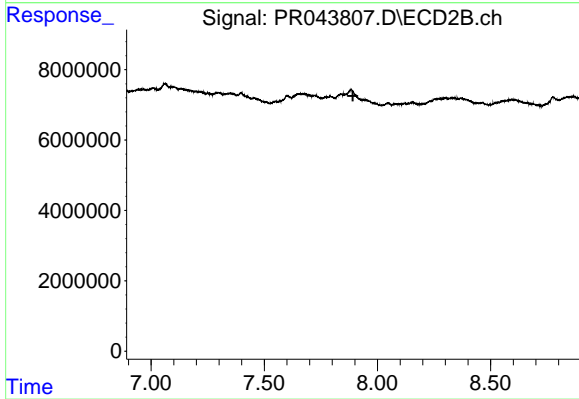
#37 AR-1262-2

R.T.: 0.000 min  
 Exp R.T. : 7.607 min  
 Response: 0  
 Conc: N.D.



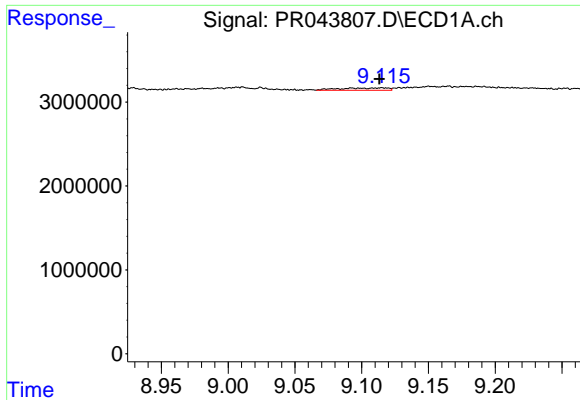
#38 AR-1262-3

R.T.: 9.010 min  
 Delta R.T.: -0.007 min  
 Response: 561057  
 Conc: 1.55 ng/ml



#38 AR-1262-3

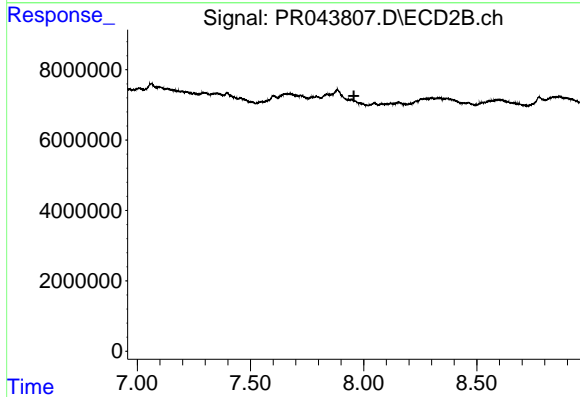
R.T.: 0.000 min  
 Exp R.T. : 7.892 min  
 Response: 0  
 Conc: N.D.



#39 AR-1262-4

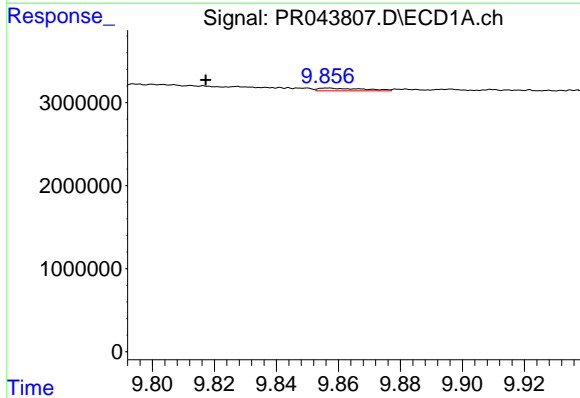
R.T.: 9.115 min  
 Delta R.T.: 0.002 min  
 Response: 679964  
 Conc: 2.55 ng/ml

Instrument :  
 ECD\_R  
 ClientSampled :  
 BFEZ4



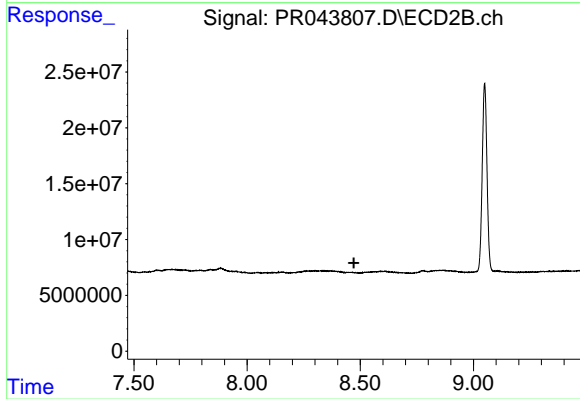
#39 AR-1262-4

R.T.: 0.000 min  
 Exp R.T. : 7.957 min  
 Response: 0  
 Conc: N.D.



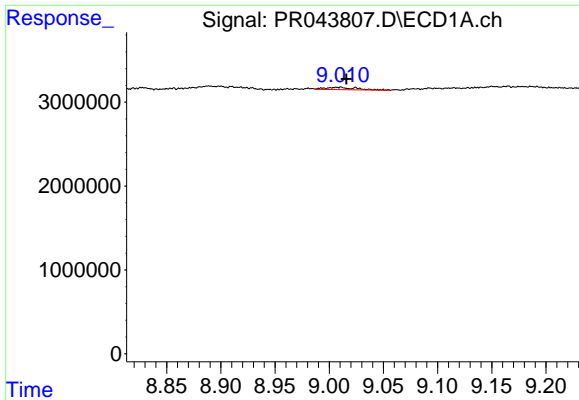
#40 AR-1262-5

R.T.: 9.857 min  
 Delta R.T.: 0.040 min  
 Response: 330413  
 Conc: 1.75 ng/ml



#40 AR-1262-5

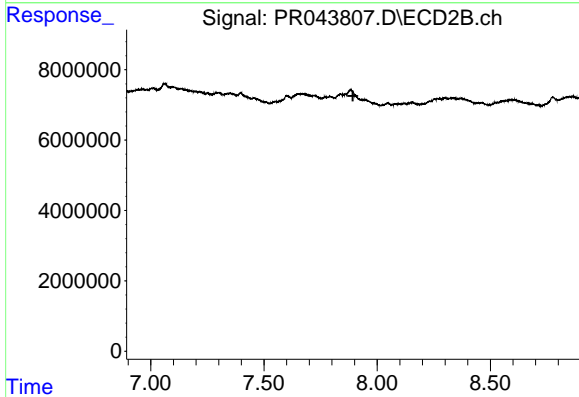
R.T.: 0.000 min  
 Exp R.T. : 8.472 min  
 Response: 0  
 Conc: N.D.



#41 AR-1268-1

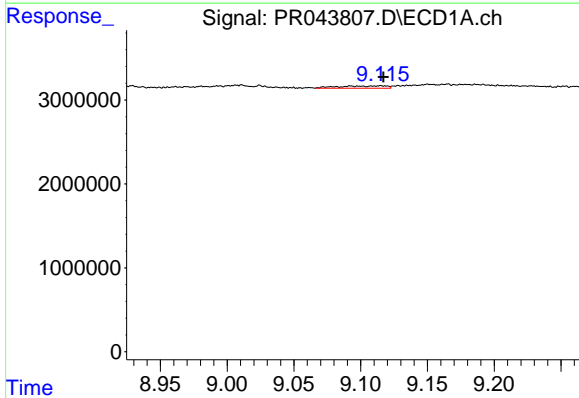
R.T.: 9.010 min  
 Delta R.T.: -0.005 min  
 Response: 561057  
 Conc: 0.88 ng/ml

Instrument :  
 ECD\_R  
 ClientSampled :  
 BFEZ4



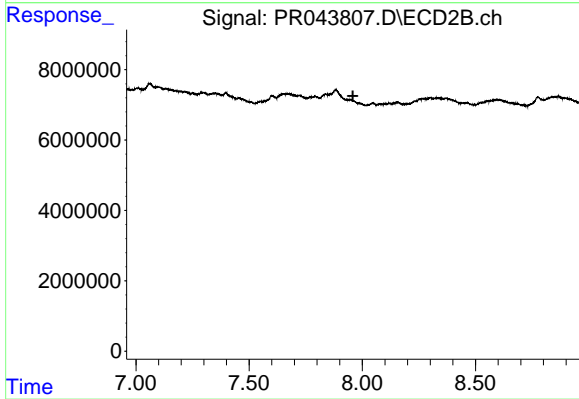
#41 AR-1268-1

R.T.: 0.000 min  
 Exp R.T. : 7.893 min  
 Response: 0  
 Conc: N.D.



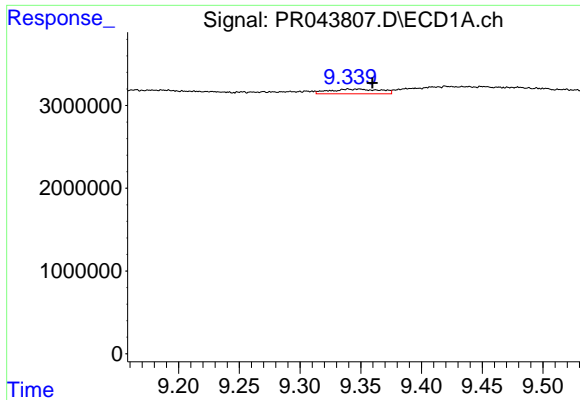
#42 AR-1268-2

R.T.: 9.115 min  
 Delta R.T.: -0.002 min  
 Response: 679964  
 Conc: 1.18 ng/ml



#42 AR-1268-2

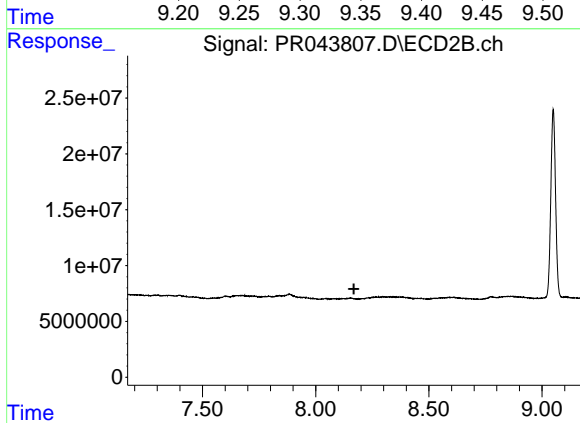
R.T.: 0.000 min  
 Exp R.T. : 7.958 min  
 Response: 0  
 Conc: N.D.



#43 AR-1268-3

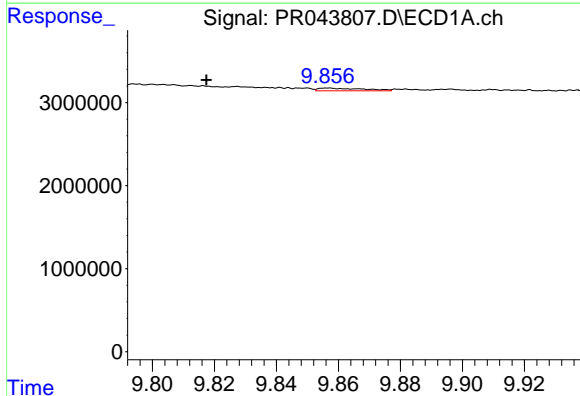
R.T.: 9.349 min  
 Delta R.T.: -0.011 min  
 Response: 1663544  
 Conc: 3.53 ng/ml

Instrument :  
 ECD\_R  
 ClientSampled :  
 BFEZ4



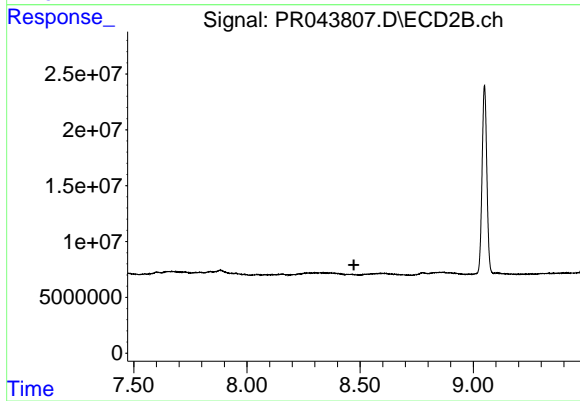
#43 AR-1268-3

R.T.: 0.000 min  
 Exp R.T. : 8.169 min  
 Response: 0  
 Conc: N.D.



#44 AR-1268-4

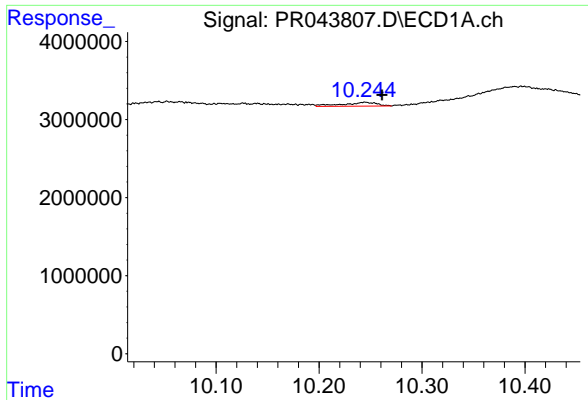
R.T.: 9.857 min  
 Delta R.T.: 0.039 min  
 Response: 330413  
 Conc: 1.62 ng/ml



#44 AR-1268-4

R.T.: 0.000 min  
 Exp R.T. : 8.472 min  
 Response: 0  
 Conc: N.D.

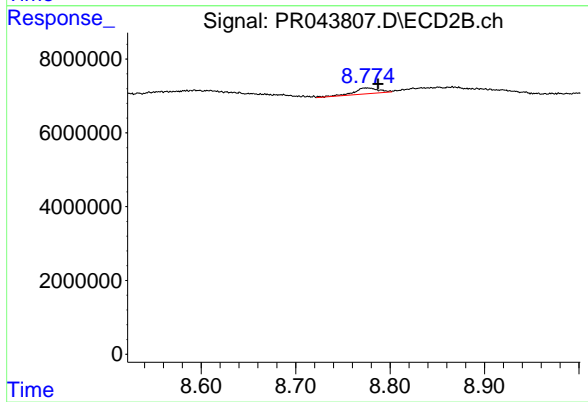




#45 AR-1268-5

R.T.: 10.245 min  
Delta R.T.: -0.017 min  
Response: 1153971  
Conc: 0.74 ng/ml

Instrument :  
ECD\_R  
ClientSampled :  
BFEZ4



#45 AR-1268-5

R.T.: 8.774 min  
Delta R.T.: -0.013 min  
Response: 2895051  
Conc: 0.68 ng/ml