

Data Path : Z:\pestpcbsrv\HPCHEM1\ECD\_R\Data\PR121324\  
 Data File : PR069601.D  
 Signal(s) : Signal #1: ECD1A.ch Signal #2: ECD2B.ch  
 Acq On : 13 Dec 2024 12:39  
 Operator : AJ\MA  
 Sample : P5234-01DL2 60X  
 Misc :  
 ALS Vial : 77 Sample Multiplier: 1

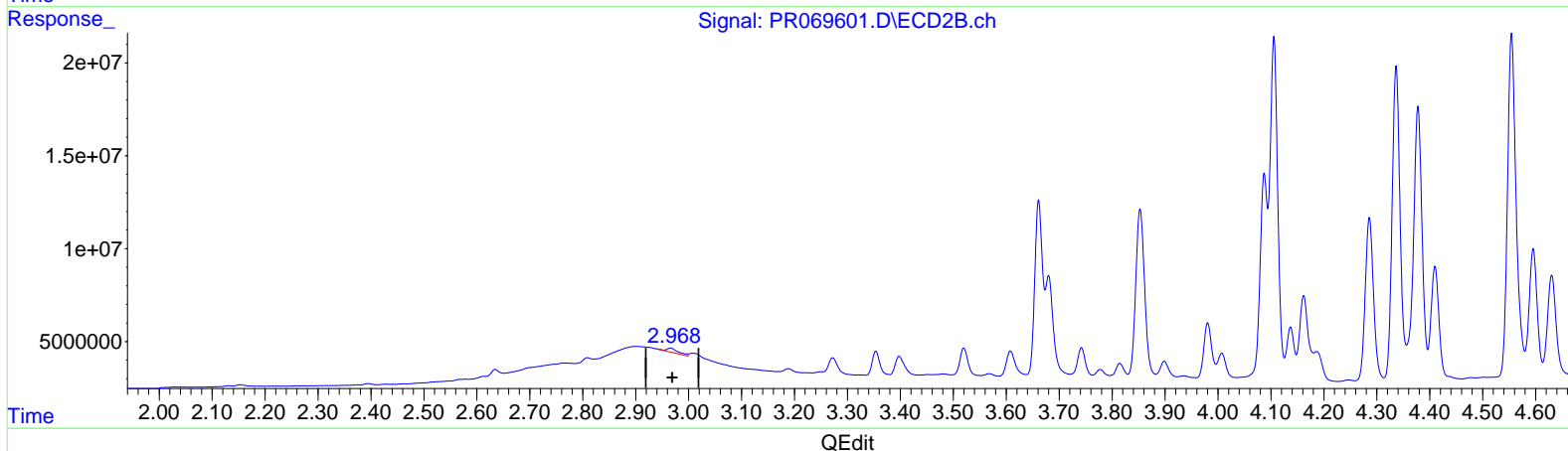
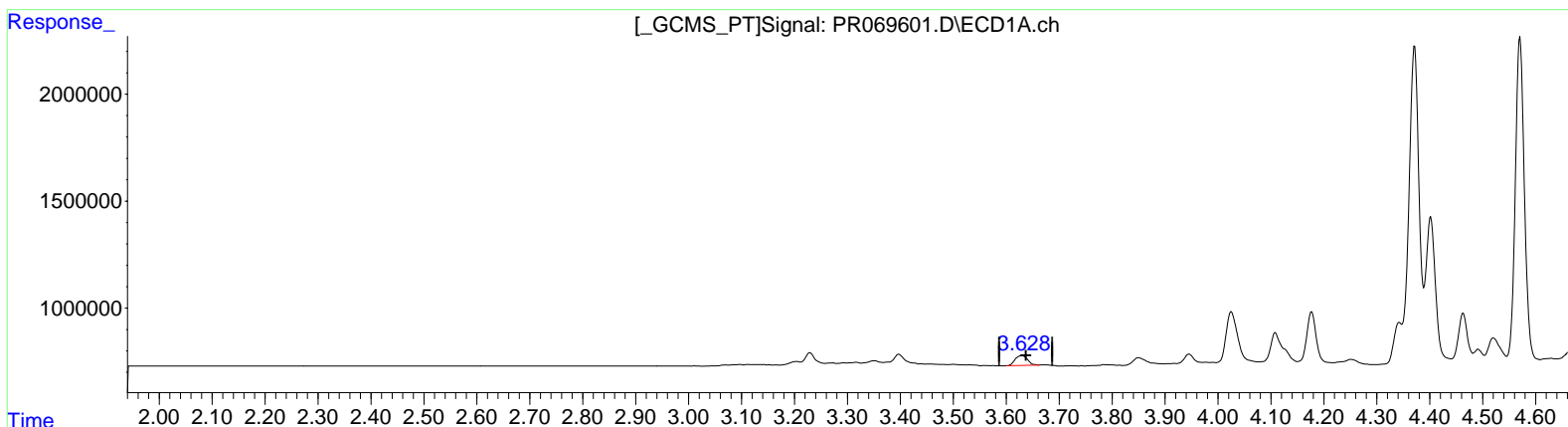
Instrument :  
 ECD\_R  
 ClientSampleId :  
 C0AD3DL2

Manual Integrations APPROVED

Reviewed By :Yogesh Patel 12/16/2024  
 Supervised By :Ankita Jodhani 12/16/2024

Integration File signal 1: autoint1.e  
 Integration File signal 2: autoint2.e  
 Quant Time: Dec 14 01:37:40 2024  
 Quant Method : Z:\pestpcbsrv\HPCHEM1\ECD\_R\Method\PR112124CLP.M  
 Quant Title : GC EXTRACTABLES  
 QLast Update : Fri Nov 22 04:30:58 2024  
 Response via : Initial Calibration  
 Integrator: ChemStation

Volume Inj. : 1 µl  
 Signal #1 Phase : ZB MR1 Signal #2 Phase: ZB MR2  
 Signal #1 Info : 30Mx0.32mmx 0.5µm Signal #2 Info : 30M x 0.32mm x 0.25µm



(1) Tetrachloro-m-xylene (SA)  
 3.629min 0.713 ng/ml  
 response 746324

(1) Tetrachloro-m-xylene #2 (SA)  
 2.966min 0.563 ng/ml  
 response 3508151

Data Path : Z:\pestpcbsrv\HPCHEM1\ECD\_R\Data\PR121324\  
 Data File : PR069601.D  
 Signal(s) : Signal #1: ECD1A.ch Signal #2: ECD2B.ch  
 Acq On : 13 Dec 2024 12:39  
 Operator : AJ\MA  
 Sample : P5234-01DL2 60X  
 Misc :  
 ALS Vial : 77 Sample Multiplier: 1

**Instrument :**

ECD\_R

**ClientSampleId :**

C0AD3DL2

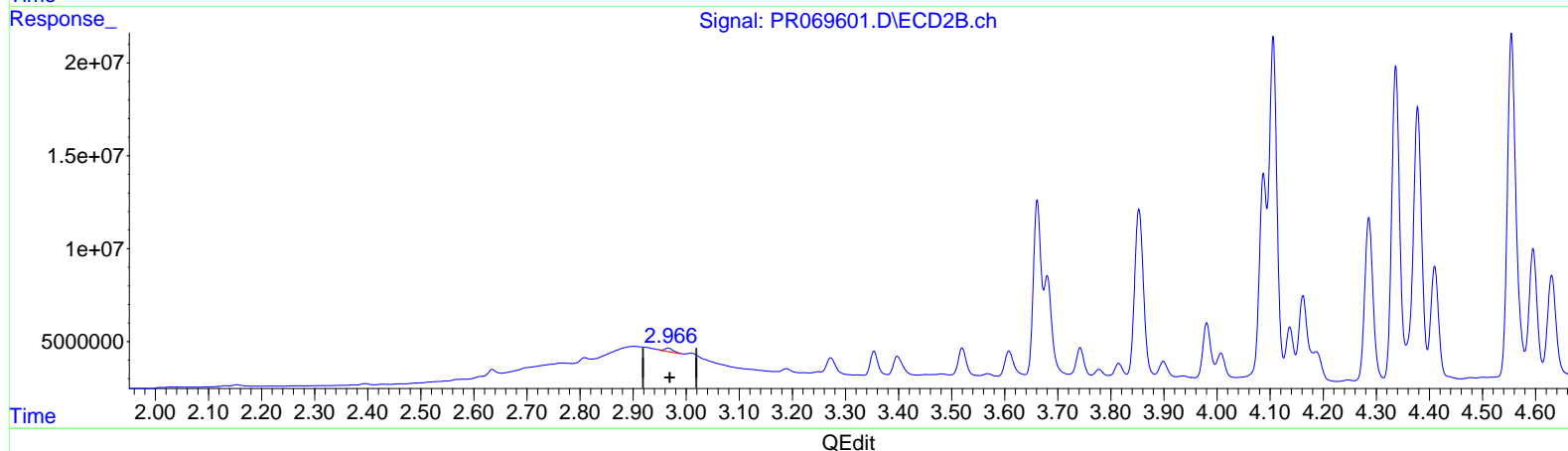
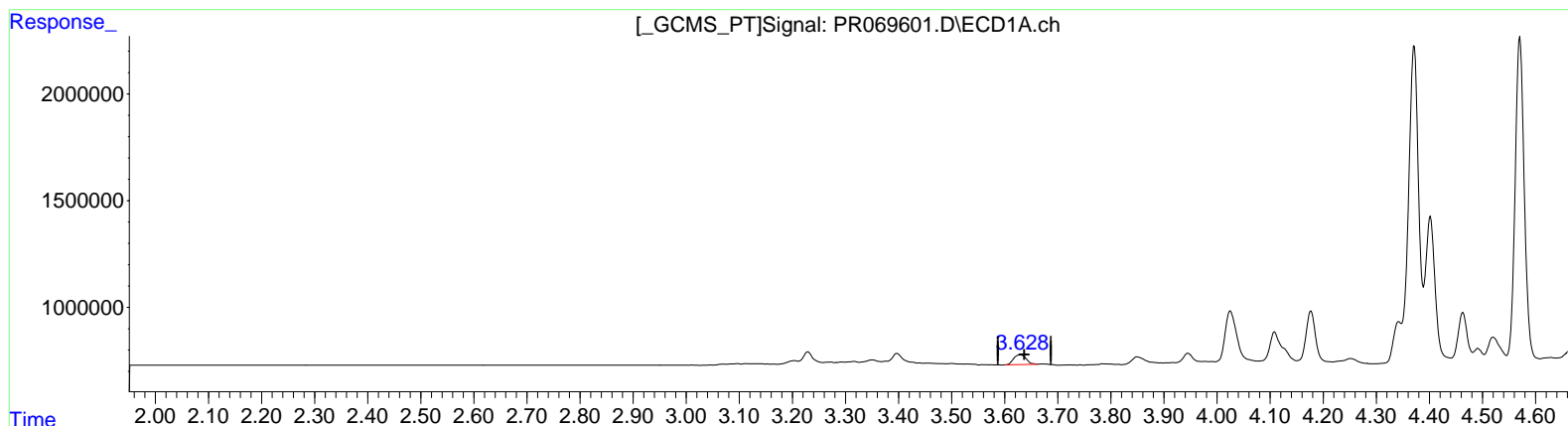
**Manual IntegrationsAPPROVED**

Reviewed By :Yogesh Patel 12/16/2024

Supervised By :Ankita Jodhani 12/16/2024

Integration File signal 1: autoint1.e  
 Integration File signal 2: autoint2.e  
 Quant Time: Dec 14 01:37:40 2024  
 Quant Method : Z:\pestpcbsrv\HPCHEM1\ECD\_R\Method\PR112124CLP.M  
 Quant Title : GC EXTRACTABLES  
 QLast Update : Fri Nov 22 04:30:58 2024  
 Response via : Initial Calibration  
 Integrator: ChemStation

Volume Inj. : 1 µl  
 Signal #1 Phase : ZB MR1 Signal #2 Phase: ZB MR2  
 Signal #1 Info : 30Mx0.32mmx 0.5µm Signal #2 Info : 30M x 0.32mm x 0.25µm



(1) Tetrachloro-m-xylene (SA)

3.629min 0.713 ng/ml

response 746324

(1) Tetrachloro-m-xylene #2 (SA)

2.966min 0.346 ng/ml m

response 2151534

Data Path : Z:\pestpcbsrv\HPCHEM1\ECD\_R\Data\PR121324\  
Data File : PR069601.D  
Signal(s) : Signal #1: ECD1A.ch Signal #2: ECD2B.ch  
Acq On : 13 Dec 2024 12:39  
Operator : AJ\MA  
Sample : P5234-01DL2 60X  
Misc :  
ALS Vial : 77 Sample Multiplier: 1

**Instrument :**

ECD\_R

**ClientSampleId :**

C0AD3DL2

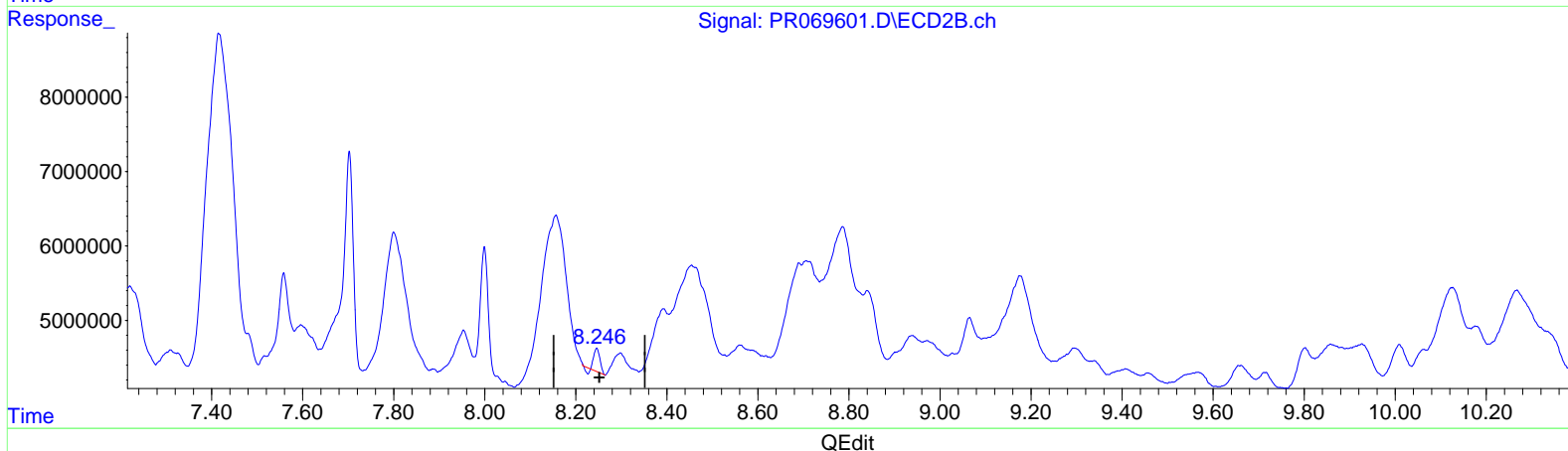
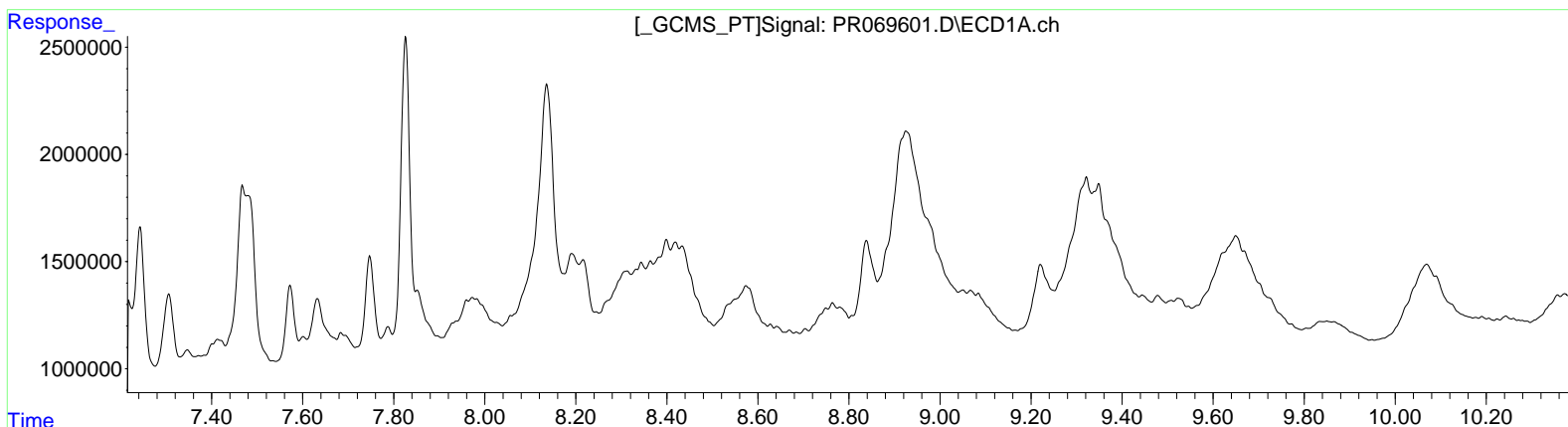
**Manual IntegrationsAPPROVED**

Reviewed By :Yogesh Patel 12/16/2024

Supervised By :Ankita Jodhani 12/16/2024

Integration File signal 1: autoint1.e  
Integration File signal 2: autoint2.e  
Quant Time: Dec 14 01:37:40 2024  
Quant Method : Z:\pestpcbsrv\HPCHEM1\ECD\_R\Method\PR112124CLP.M  
Quant Title : GC EXTRACTABLES  
QLast Update : Fri Nov 22 04:30:58 2024  
Response via : Initial Calibration  
Integrator: ChemStation

Volume Inj. : 1 µl  
Signal #1 Phase : ZB MR1 Signal #2 Phase: ZB MR2  
Signal #1 Info : 30Mx0.32mmx 0.5µm Signal #2 Info : 30M x 0.32mm x 0.25µm



(2) Decachlorobiphenyl (SA)

0.000min 0.000 ng/ml

response 0

(2) Decachlorobiphenyl #2 (SA)

8.246min 0.711 ng/ml

response 2680420

Data Path : Z:\pestpcbsrv\HPCHEM1\ECD\_R\Data\PR121324\  
 Data File : PR069601.D  
 Signal(s) : Signal #1: ECD1A.ch Signal #2: ECD2B.ch  
 Acq On : 13 Dec 2024 12:39  
 Operator : AJ\MA  
 Sample : P5234-01DL2 60X  
 Misc :  
 ALS Vial : 77 Sample Multiplier: 1

**Instrument :**

ECD\_R

**ClientSampleId :**

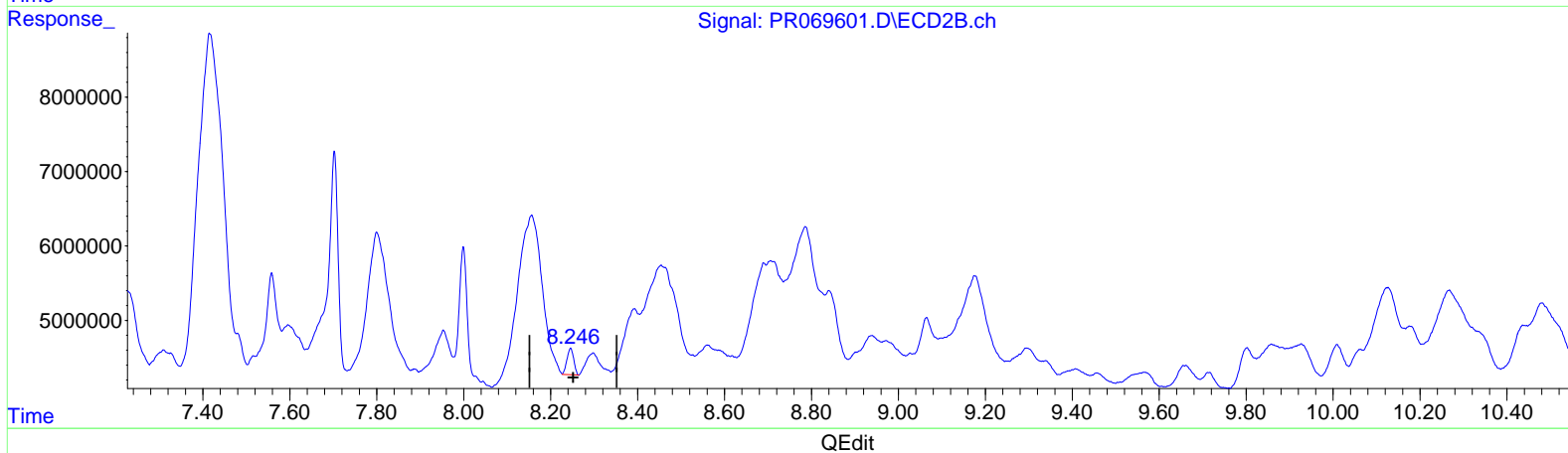
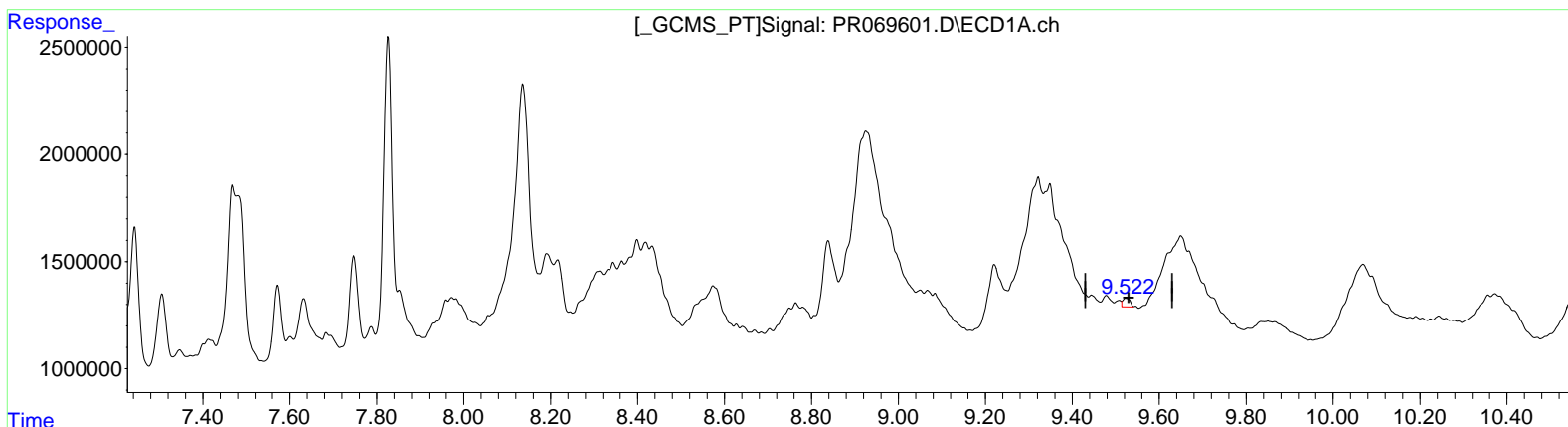
C0AD3DL2

**Manual IntegrationsAPPROVED**

Reviewed By :Yogesh Patel 12/16/2024  
 Supervised By :Ankita Jodhani 12/16/2024

Integration File signal 1: autoint1.e  
 Integration File signal 2: autoint2.e  
 Quant Time: Dec 14 01:37:40 2024  
 Quant Method : Z:\pestpcbsrv\HPCHEM1\ECD\_R\Method\PR112124CLP.M  
 Quant Title : GC EXTRACTABLES  
 QLast Update : Fri Nov 22 04:30:58 2024  
 Response via : Initial Calibration  
 Integrator: ChemStation

Volume Inj. : 1 µl  
 Signal #1 Phase : ZB MR1 Signal #2 Phase: ZB MR2  
 Signal #1 Info : 30Mx0.32mmx 0.5µm Signal #2 Info : 30M x 0.32mm x 0.25µm



(2) Decachlorobiphenyl (SA)

9.522min 0.866 ng/ml m

response 464974

(2) Decachlorobiphenyl #2 (SA)

8.246min 1.011 ng/ml m

response 3809096

Data Path : Z:\pestpcbsrv\HPCHEM1\ECD\_R\Data\PR121324\  
 Data File : PR069601.D  
 Signal(s) : Signal #1: ECD1A.ch Signal #2: ECD2B.ch  
 Acq On : 13 Dec 2024 12:39  
 Operator : AJ\MA  
 Sample : P5234-01DL2 60X  
 Misc :  
 ALS Vial : 77 Sample Multiplier: 1

**Instrument :**

ECD\_R

**ClientSampleId :**

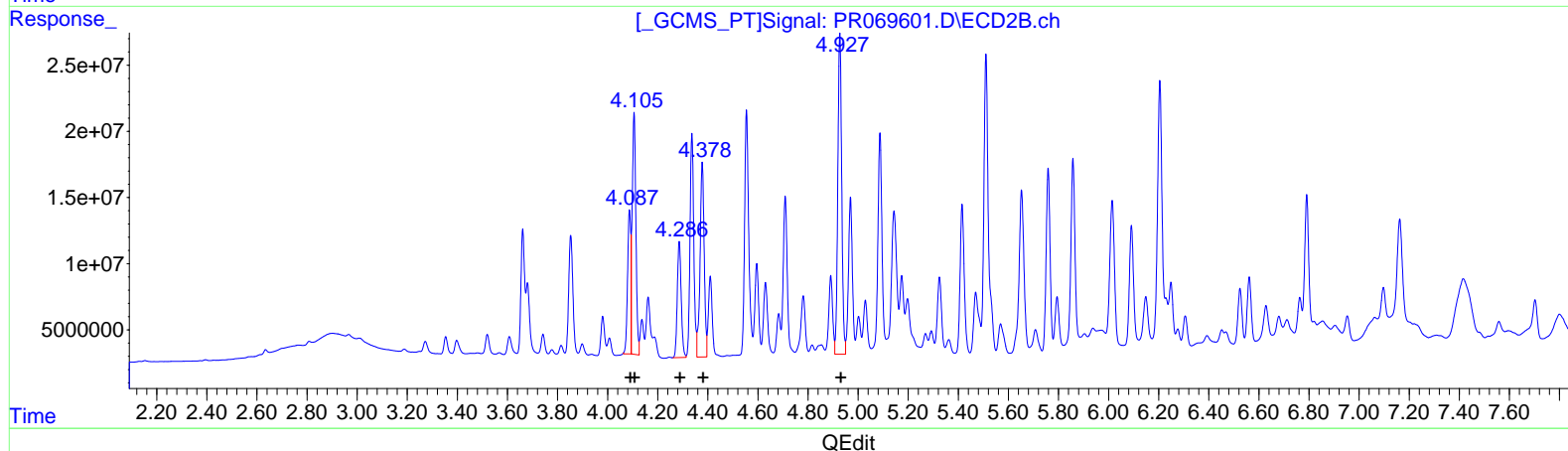
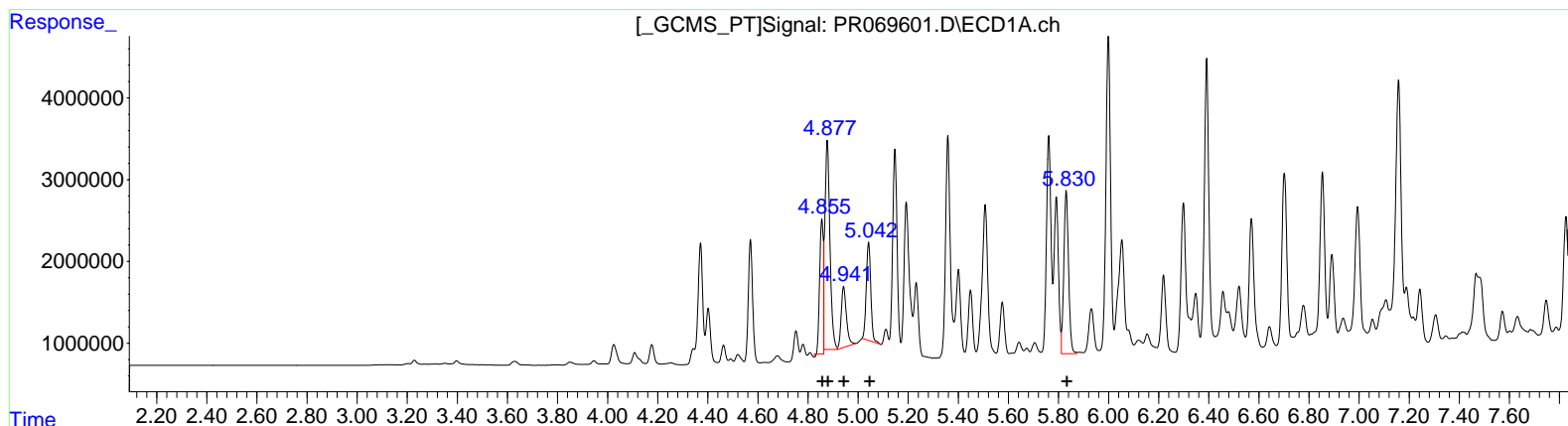
C0AD3DL2

**Manual IntegrationsAPPROVED**

Reviewed By :Yogesh Patel 12/16/2024  
 Supervised By :Ankita Jodhani 12/16/2024

Integration File signal 1: autoint1.e  
 Integration File signal 2: autoint2.e  
 Quant Time: Dec 14 01:37:40 2024  
 Quant Method : Z:\pestpcbsrv\HPCHEM1\ECD\_R\Method\PR112124CLP.M  
 Quant Title : GC EXTRACTABLES  
 QLast Update : Fri Nov 22 04:30:58 2024  
 Response via : Initial Calibration  
 Integrator: ChemStation

Volume Inj. : 1 µl  
 Signal #1 Phase : ZB MR1 Signal #2 Phase: ZB MR2  
 Signal #1 Info : 30Mx0.32mmx 0.5µm Signal #2 Info : 30M x 0.32mm x 0.25µm



(16) AR-1242-1 (L4)

R.T.	Response	Conc
4.86	16964586	642.30
4.88	36577573	924.84
4.94	10738087	435.21
5.04	15058857	782.78
5.83	26113112	1273.56

(16) AR-1242-1 #2 (L4)

R.T.	Response	Conc
4.09	95174814	569.25
4.11	188592452	793.72
4.29	95473654	748.91
4.38	167963447	1386.27
4.93	262748280	1821.88

Data Path : Z:\pestpcbsrv\HPCHEM1\ECD\_R\Data\PR121324\  
 Data File : PR069601.D  
 Signal(s) : Signal #1: ECD1A.ch Signal #2: ECD2B.ch  
 Acq On : 13 Dec 2024 12:39  
 Operator : AJ\MA  
 Sample : P5234-01DL2 60X  
 Misc :  
 ALS Vial : 77 Sample Multiplier: 1

**Instrument :**

ECD\_R

**ClientSampleId :**

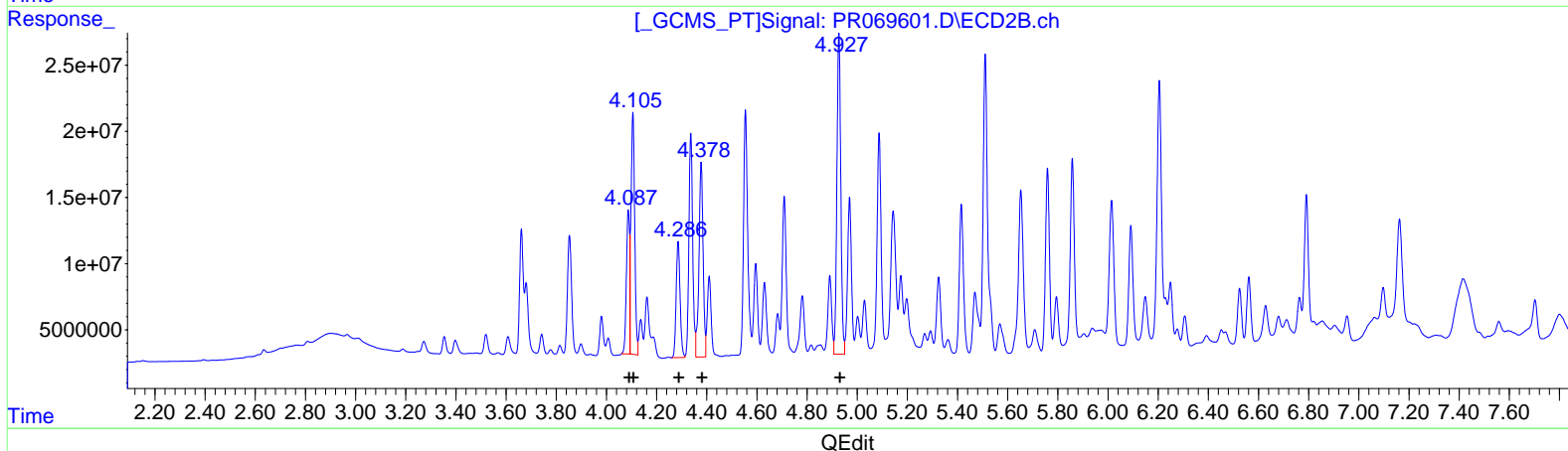
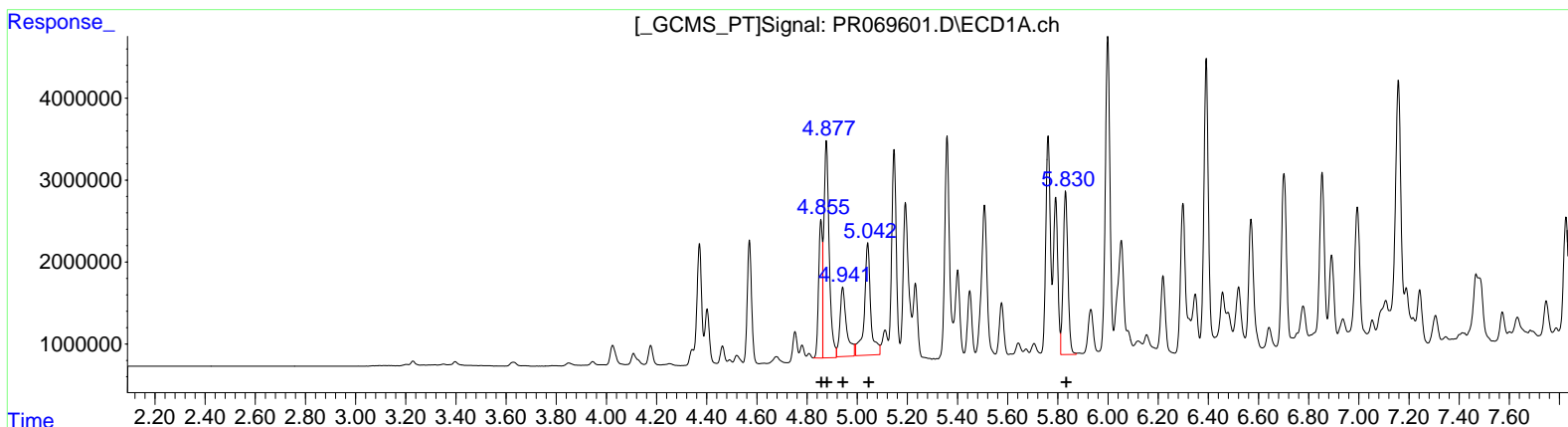
C0AD3DL2

**Manual IntegrationsAPPROVED**

Reviewed By :Yogesh Patel 12/16/2024  
 Supervised By :Ankita Jodhani 12/16/2024

Integration File signal 1: autoint1.e  
 Integration File signal 2: autoint2.e  
 Quant Time: Dec 14 01:37:40 2024  
 Quant Method : Z:\pestpcbsrv\HPCHEM1\ECD\_R\Method\PR112124CLP.M  
 Quant Title : GC EXTRACTABLES  
 QLast Update : Fri Nov 22 04:30:58 2024  
 Response via : Initial Calibration  
 Integrator: ChemStation

Volume Inj. : 1 µl  
 Signal #1 Phase : ZB MR1 Signal #2 Phase: ZB MR2  
 Signal #1 Info : 30Mx0.32mmx 0.5µm Signal #2 Info : 30M x 0.32mm x 0.25µm



(16) AR-1242-1 (L4)

R.T.	Response	Conc
4.85	17538693	664.03
4.88	38594309	975.83
4.94	15563340	630.78
5.04	24284813	1262.36
5.83	26113112	1273.56

(16) AR-1242-1 #2 (L4)

R.T.	Response	Conc
4.09	95174814	569.25
4.11	188592452	793.72
4.29	95473654	748.91
4.38	167963447	1386.27
4.93	262748280	1821.88

Data Path : Z:\pestpcbsrv\HPCHEM1\ECD\_R\Data\PR121324\  
 Data File : PR069601.D  
 Signal(s) : Signal #1: ECD1A.ch Signal #2: ECD2B.ch  
 Acq On : 13 Dec 2024 12:39  
 Operator : AJ\MA  
 Sample : P5234-01DL2 60X  
 Misc :  
 ALS Vial : 77 Sample Multiplier: 1

**Instrument :**

ECD\_R

**ClientSampleId :**

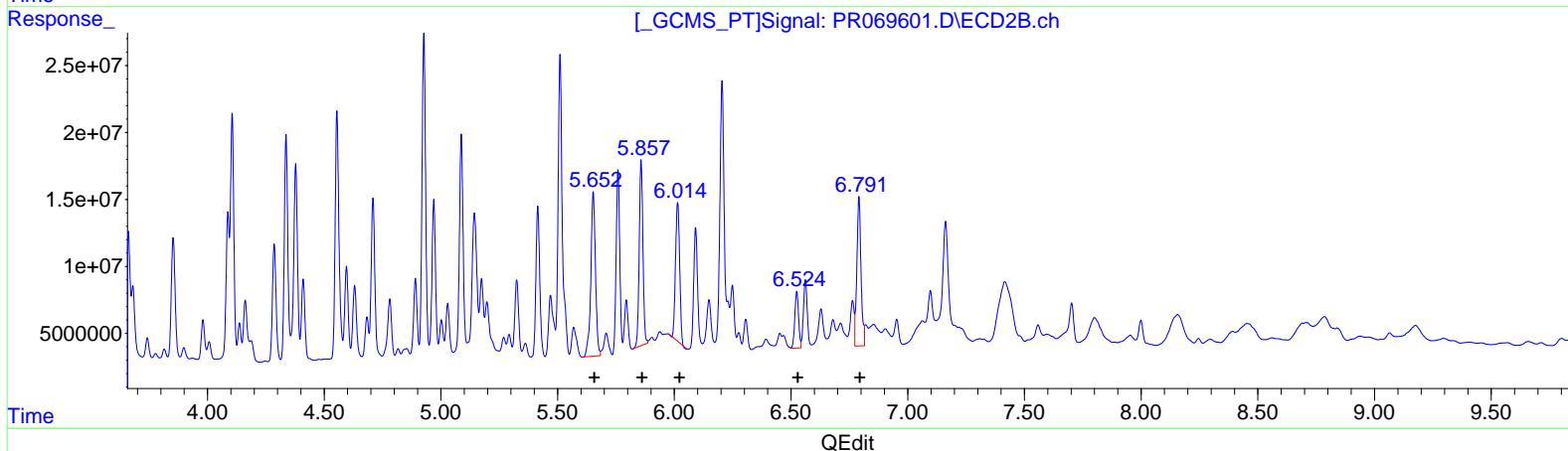
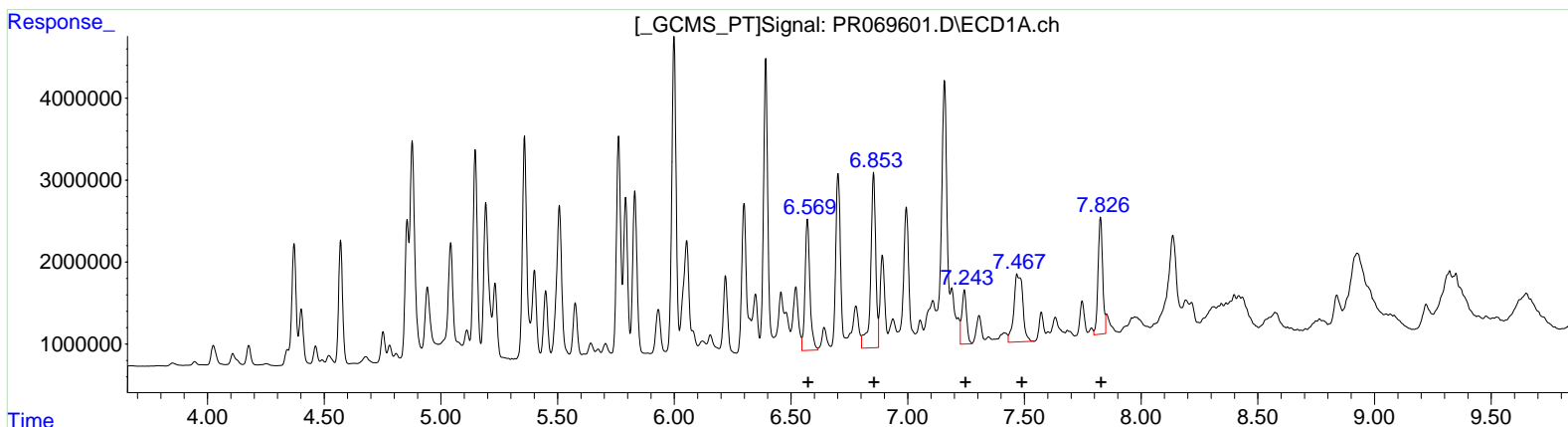
C0AD3DL2

**Manual IntegrationsAPPROVED**

Reviewed By :Yogesh Patel 12/16/2024  
 Supervised By :Ankita Jodhani 12/16/2024

Integration File signal 1: autoint1.e  
 Integration File signal 2: autoint2.e  
 Quant Time: Dec 14 01:37:40 2024  
 Quant Method : Z:\pestpcbsrv\HPCHEM1\ECD\_R\Method\PR112124CLP.M  
 Quant Title : GC EXTRACTABLES  
 QLast Update : Fri Nov 22 04:30:58 2024  
 Response via : Initial Calibration  
 Integrator: ChemStation

Volume Inj. : 1 µl  
 Signal #1 Phase : ZB MR1 Signal #2 Phase: ZB MR2  
 Signal #1 Info : 30Mx0.32mmx 0.5µm Signal #2 Info : 30M x 0.32mm x 0.25µm



QEdit

(31) AR-1260-1 (L7)		
R.T.	Response	Conc
6.57	23135843	560.58
6.85	32314222	677.24
7.24	9343045	255.02
7.47	21951291	527.74
7.83	19623909	257.21

(31) AR-1260-1 #2 (L7)		
R.T.	Response	Conc
5.65	170073322	671.32
5.86	152543996	514.70
6.01	127378188	449.46
6.52	47963065	198.59
6.79	138731387	243.23

Data Path : Z:\pestpcbsrv\HPCHEM1\ECD\_R\Data\PR121324\  
 Data File : PR069601.D  
 Signal(s) : Signal #1: ECD1A.ch Signal #2: ECD2B.ch  
 Acq On : 13 Dec 2024 12:39  
 Operator : AJ\MA  
 Sample : P5234-01DL2 60X  
 Misc :  
 ALS Vial : 77 Sample Multiplier: 1

**Instrument :**

ECD\_R

**ClientSampleId :**

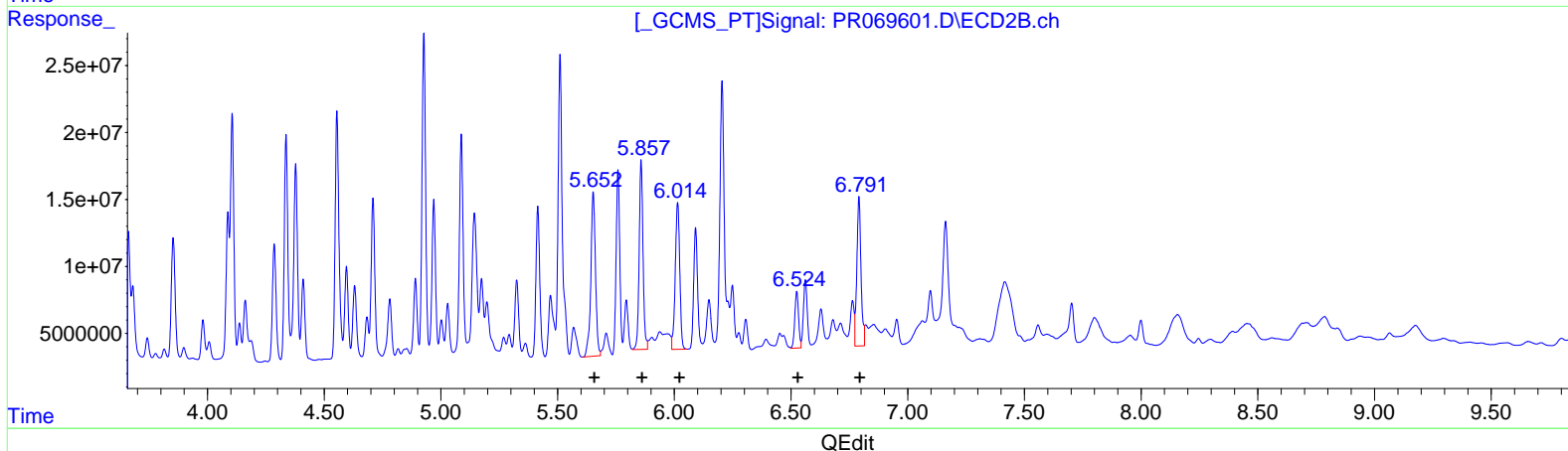
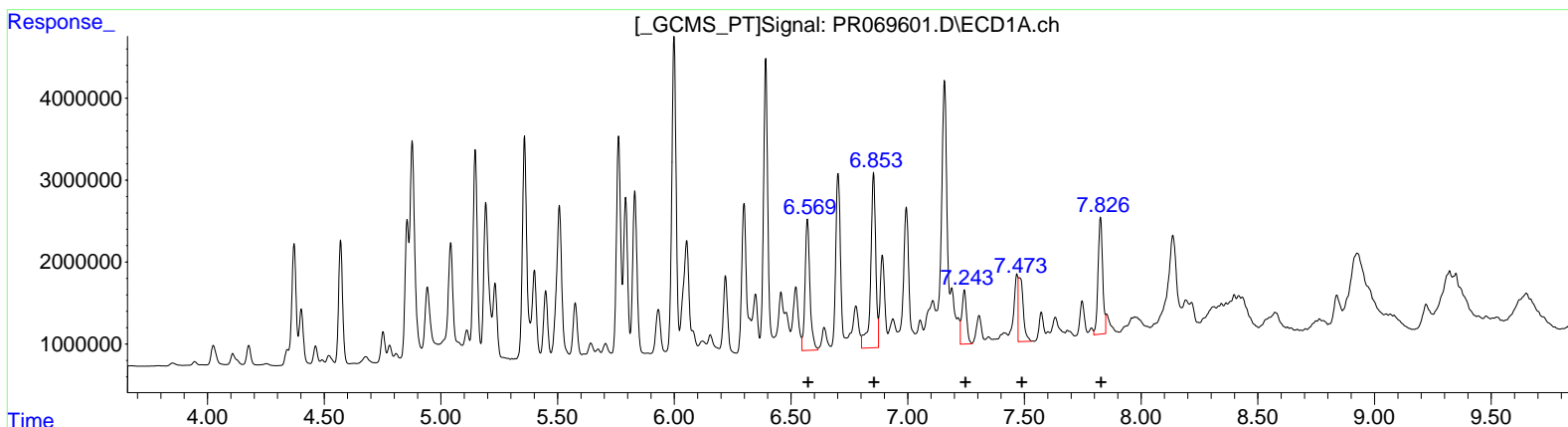
C0AD3DL2

**Manual IntegrationsAPPROVED**

Reviewed By :Yogesh Patel 12/16/2024  
 Supervised By :Ankita Jodhani 12/16/2024

Integration File signal 1: autoint1.e  
 Integration File signal 2: autoint2.e  
 Quant Time: Dec 14 01:37:40 2024  
 Quant Method : Z:\pestpcbsrv\HPCHEM1\ECD\_R\Method\PR112124CLP.M  
 Quant Title : GC EXTRACTABLES  
 QLast Update : Fri Nov 22 04:30:58 2024  
 Response via : Initial Calibration  
 Integrator: ChemStation

Volume Inj. : 1 µl  
 Signal #1 Phase : ZB MR1 Signal #2 Phase: ZB MR2  
 Signal #1 Info : 30Mx0.32mmx 0.5µm Signal #2 Info : 30M x 0.32mm x 0.25µm



QEdit

(31) AR-1260-1 (L7)		
R.T.	Response	Conc
6.57	23135843	560.58
6.85	32314222	677.24
7.24	9343045	255.02
7.47	11604559	278.99
7.83	19623909	257.21

(31) AR-1260-1 #2 (L7)		
R.T.	Response	Conc
5.65	170073322	671.32
5.86	162058375	546.81
6.01	146520972	517.00
6.52	47963065	198.59
6.79	138731387	243.23