

Data Path : Z:\pestpcbsrv\HPCHEM1\ECD_R\Data\PR121518\
 Data File : PR034606.D
 Signal(s) : Signal #1: ECD1A.ch Signal #2: ECD2B.ch
 Acq On : 14 Dec 2018 14:54
 Operator : SM\SJ
 Sample : AR1660CCC500
 Misc :
 ALS Vial : 3 Sample Multiplier: 1

Instrument :
 ECD_R
 ClientSampleId :
 AR1660CCC500

Manual Integrations
 APPROVED

sohil
 12/17/2018 3:04:48 AM

Integration File signal 1: autoint1.e
 Integration File signal 2: autoint2.e
 Quant Time: Dec 14 22:42:44 2018
 Quant Method : Z:\pestpcbsrv\HPCHEM1\ECD_R\Method\PR120718.M
 Quant Title : GC EXTRACTABLES
 QLast Update : Fri Dec 07 02:02:36 2018
 Response via : Initial Calibration
 Integrator: ChemStation

Volume Inj. : 2 µl
 Signal #1 Phase : ZB-MR2 Signal #2 Phase: ZB-MR2
 Signal #1 Info : 30Mx0.32mmx 0.50µ Signal #2 Info : 30M x 0.32mm x 0.25µm

| Compound | RT#1 | RT#2 | Resp#1 | Resp#2 | ng/ml | ng/ml |
|-----------------------------|--------|-------|----------|----------|---------|----------|
| ----- | | | | | | |
| System Monitoring Compounds | | | | | | |
| 1) SA Tetrachlo... | 4.430 | 3.516 | 81941948 | 163.9E6 | 45.395 | 44.525 |
| 2) SA Decachlor... | 10.112 | 8.415 | 103.7E6 | 224.6E6 | 52.856 | 54.895 |
| Target Compounds | | | | | | |
| 3) L1 AR-1016-1 | 5.594 | 4.577 | 29960084 | 57292210 | 454.858 | 440.861 |
| 4) L1 AR-1016-2 | 5.616 | 4.595 | 43523154 | 87227474 | 444.887 | 441.520 |
| 5) L1 AR-1016-3 | 5.678 | 4.767 | 25991882 | 43742118 | 447.417 | 438.022 |
| 6) L1 AR-1016-4 | 5.777 | 4.809 | 21576255 | 35023730 | 459.438 | 431.302 |
| 7) L1 AR-1016-5 | 6.068 | 5.018 | 21842610 | 48031608 | 448.887 | 435.929 |
| 31) L7 AR-1260-1 | 7.186 | 6.031 | 45925292 | 104.6E6 | 441.230 | 433.391 |
| 32) L7 AR-1260-2 | 7.442 | 6.217 | 57793900 | 136.2E6 | 444.323 | 449.538 |
| 33) L7 AR-1260-3 | 7.799 | 6.367 | 37428908 | 124.3E6 | 453.422 | 436.153m |
| 34) L7 AR-1260-4 | 8.024 | 6.833 | 44399617 | 88086381 | 444.545 | 446.442 |
| 35) L7 AR-1260-5 | 8.341 | 7.073 | 92282537 | 241.5E6 | 471.117 | 472.118 |

(f)=RT Delta > 1/2 Window (#)=Amounts differ by > 25% (m)=manual int.

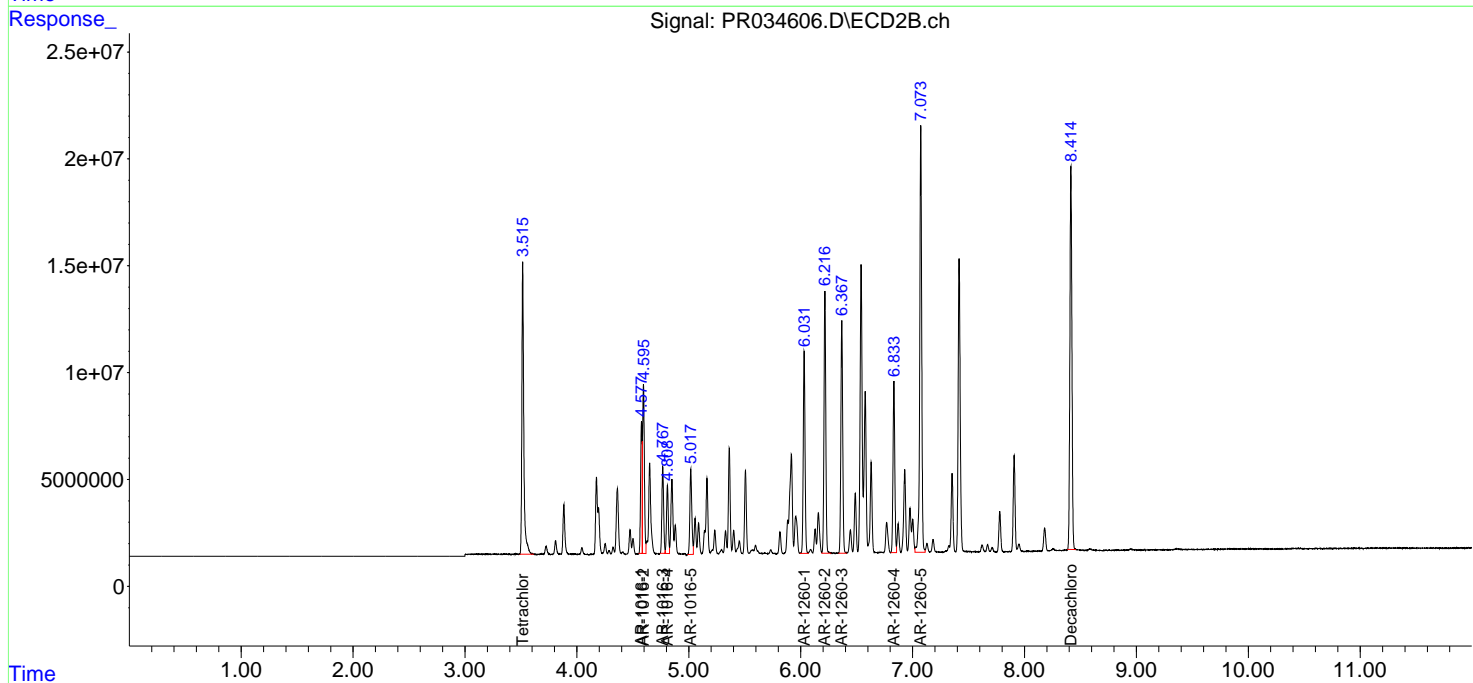
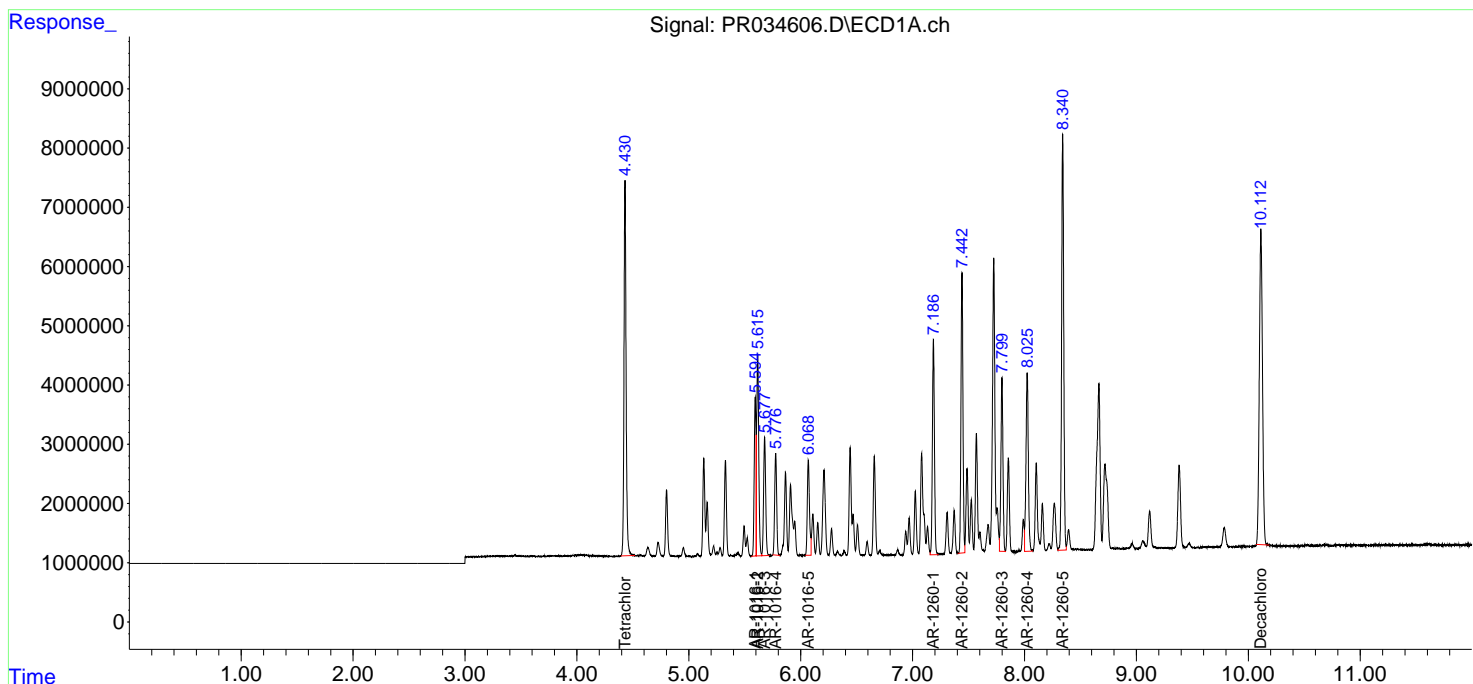
Data Path : Z:\pestpcbsrv\HPCHEM1\ECD_R\Data\PR121518\
 Data File : PR034606.D
 Signal(s) : Signal #1: ECD1A.ch Signal #2: ECD2B.ch
 Acq On : 14 Dec 2018 14:54
 Operator : SM\SJ
 Sample : AR1660CCC500
 Misc :
 ALS Vial : 3 Sample Multiplier: 1

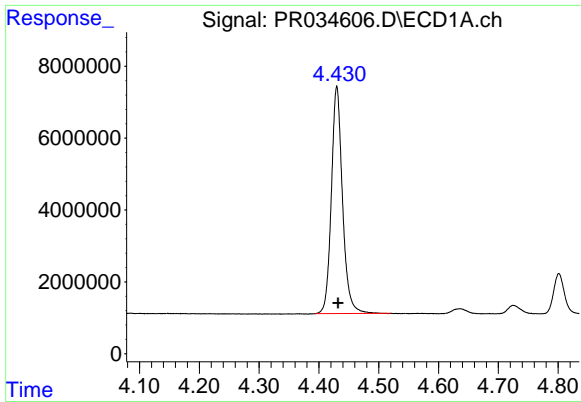
Instrument :
 ECD_R
Client Sampled :
 AR1660CCC500

Manual Integrations
APPROVED
 sohil
 12/17/2018 3:04:48 AM

Integration File signal 1: autoint1.e
 Integration File signal 2: autoint2.e
 Quant Time: Dec 14 22:42:44 2018
 Quant Method : Z:\pestpcbsrv\HPCHEM1\ECD_R\Method\PR120718.M
 Quant Title : GC EXTRACTABLES
 QLast Update : Fri Dec 07 02:02:36 2018
 Response via : Initial Calibration
 Integrator: ChemStation

Volume Inj. : 2 µl
 Signal #1 Phase : ZB-MR1 Signal #2 Phase: ZB-MR2
 Signal #1 Info : 30Mx0.32mmx 0.50µm Signal #2 Info : 30M x 0.32mm x 0.25µm

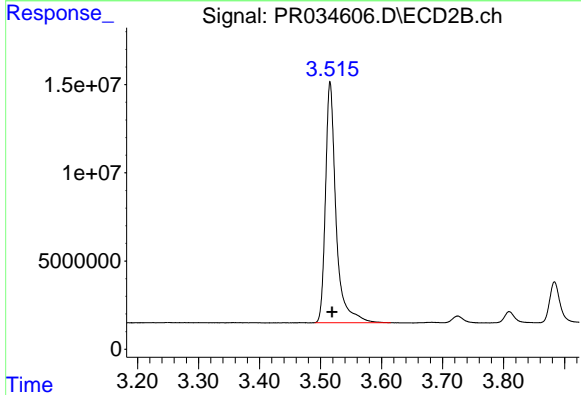




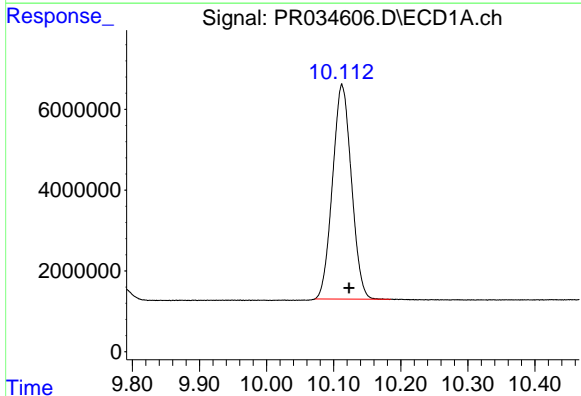
#1 Tetrachloro-m-xylene
 R.T.: 4.430 min
 Delta R.T.: -0.002 min
 Response: 81941948
 Conc: 45.39 ng/ml

Instrument :
 ECD_R
 ClientSampleId :
 AR1660CCC500

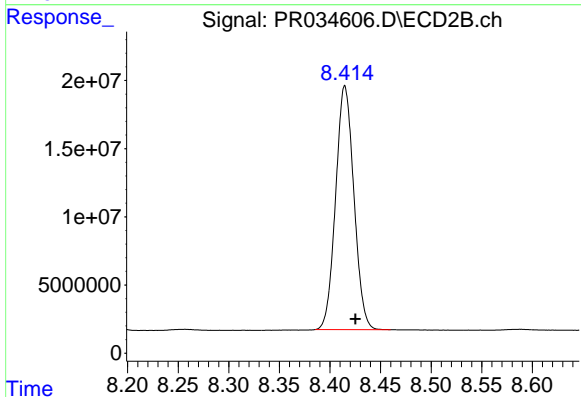
Manual Integrations
 APPROVED
 sohil
 12/17/2018 3:04:48 AM



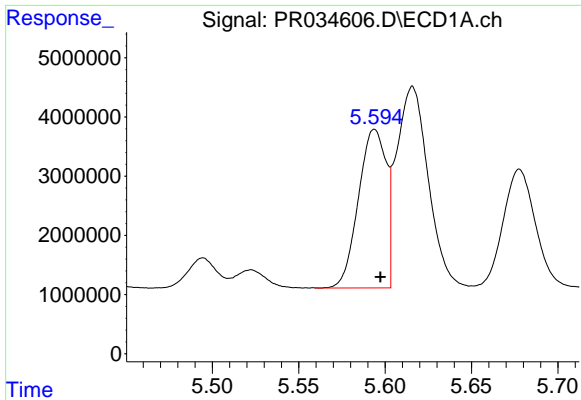
#1 Tetrachloro-m-xylene
 R.T.: 3.516 min
 Delta R.T.: -0.003 min
 Response: 163934549
 Conc: 44.52 ng/ml



#2 Decachlorobiphenyl
 R.T.: 10.112 min
 Delta R.T.: -0.011 min
 Response: 103741089
 Conc: 52.86 ng/ml



#2 Decachlorobiphenyl
 R.T.: 8.415 min
 Delta R.T.: -0.010 min
 Response: 224593123
 Conc: 54.90 ng/ml

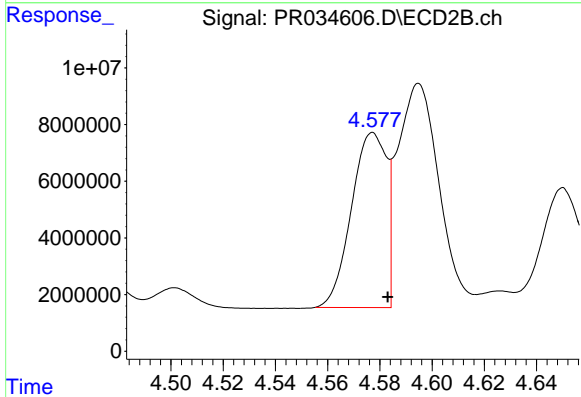


#3 AR-1016-1

R.T.: 5.594 min
 Delta R.T.: -0.003 min
 Response: 29960084
 Conc: 454.86 ng/ml

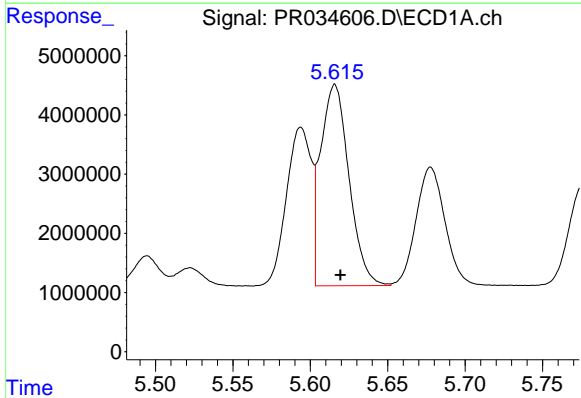
Instrument :
 ECD_R
ClientSampled :
 AR1660CCC500

Manual Integrations
APPROVED
 sohil
 12/17/2018 3:04:48 AM



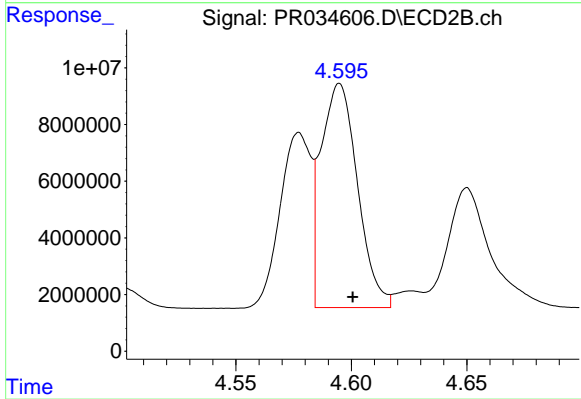
#3 AR-1016-1

R.T.: 4.577 min
 Delta R.T.: -0.006 min
 Response: 57292210
 Conc: 440.86 ng/ml



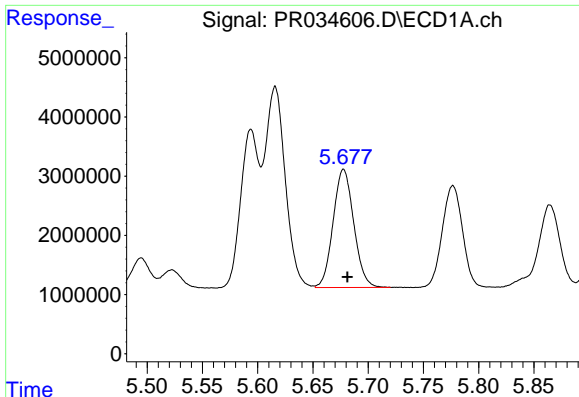
#4 AR-1016-2

R.T.: 5.616 min
 Delta R.T.: -0.003 min
 Response: 43523154
 Conc: 444.89 ng/ml



#4 AR-1016-2

R.T.: 4.595 min
 Delta R.T.: -0.006 min
 Response: 87227474
 Conc: 441.52 ng/ml



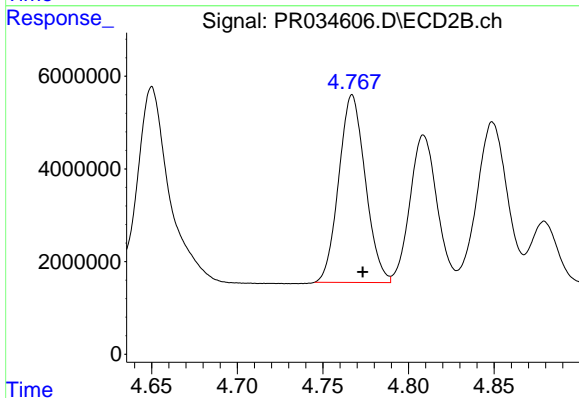
#5 AR-1016-3

R.T.: 5.678 min
 Delta R.T.: -0.003 min
 Response: 25991882
 Conc: 447.42 ng/ml

Instrument :
 ECD_R
 ClientSampled :
 AR1660CCC500

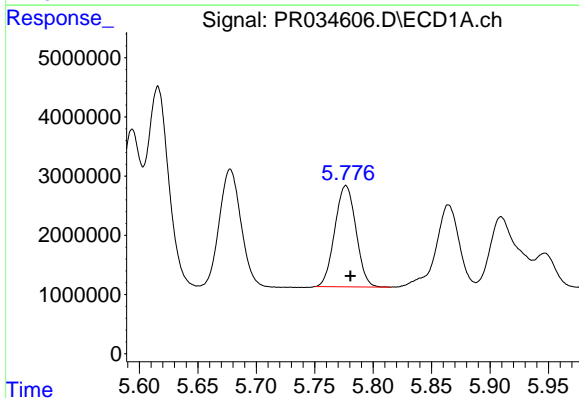
Manual Integrations
 APPROVED

sohil
 12/17/2018 3:04:48 AM



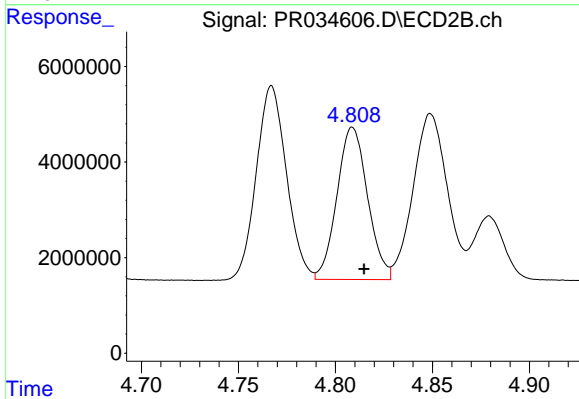
#5 AR-1016-3

R.T.: 4.767 min
 Delta R.T.: -0.006 min
 Response: 43742118
 Conc: 438.02 ng/ml



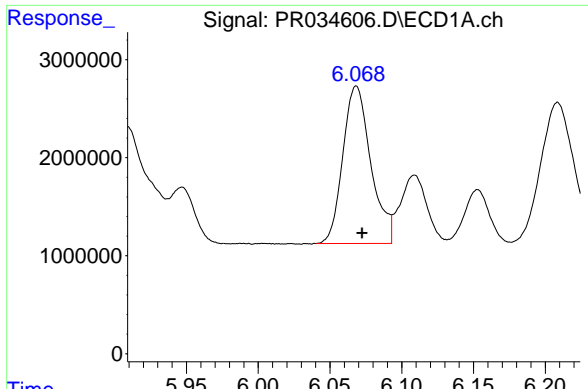
#6 AR-1016-4

R.T.: 5.777 min
 Delta R.T.: -0.004 min
 Response: 21576255
 Conc: 459.44 ng/ml



#6 AR-1016-4

R.T.: 4.809 min
 Delta R.T.: -0.006 min
 Response: 35023730
 Conc: 431.30 ng/ml

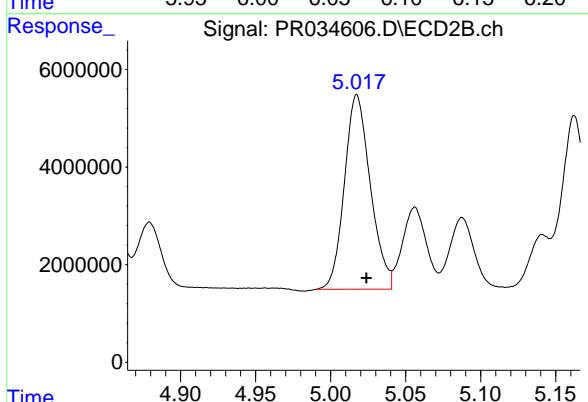


#7 AR-1016-5

R.T.: 6.068 min
 Delta R.T.: -0.004 min
 Response: 21842610
 Conc: 448.89 ng/ml

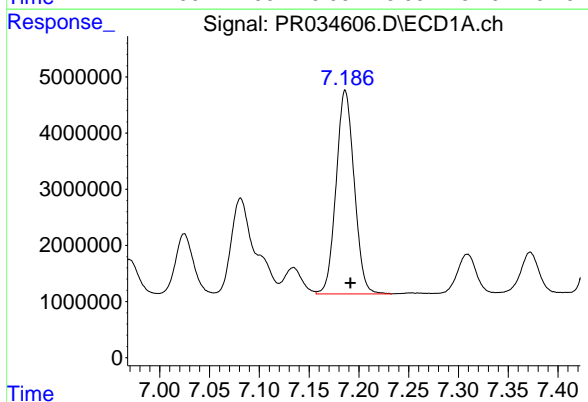
Instrument :
 ECD_R
ClientSampled :
 AR1660CCC500

Manual Integrations
APPROVED
 sohil
 12/17/2018 3:04:48 AM



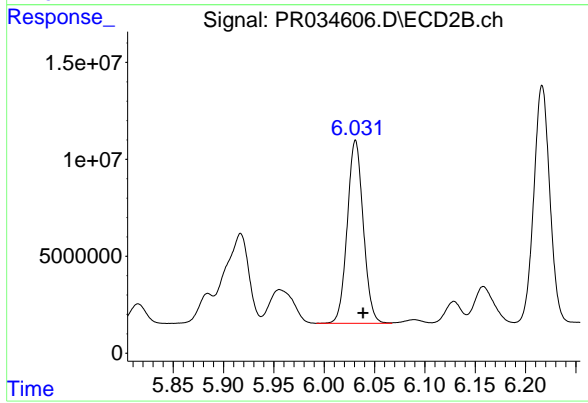
#7 AR-1016-5

R.T.: 5.018 min
 Delta R.T.: -0.006 min
 Response: 48031608
 Conc: 435.93 ng/ml



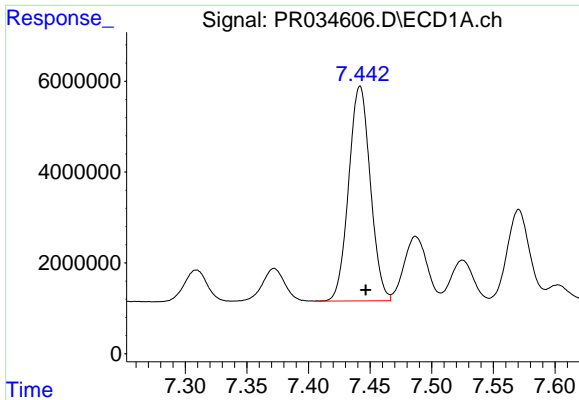
#31 AR-1260-1

R.T.: 7.186 min
 Delta R.T.: -0.005 min
 Response: 45925292
 Conc: 441.23 ng/ml



#31 AR-1260-1

R.T.: 6.031 min
 Delta R.T.: -0.007 min
 Response: 104605659
 Conc: 433.39 ng/ml

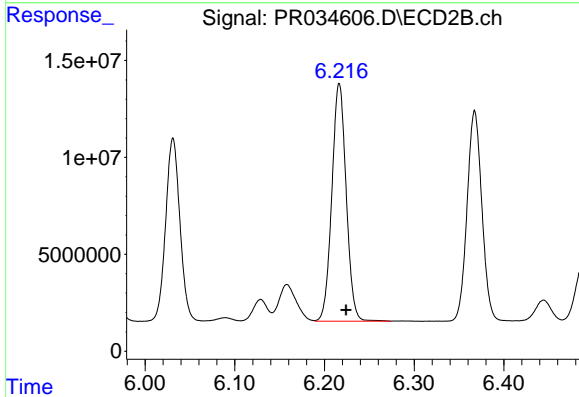


#32 AR-1260-2

R.T.: 7.442 min
 Delta R.T.: -0.005 min
 Response: 57793900
 Conc: 444.32 ng/ml

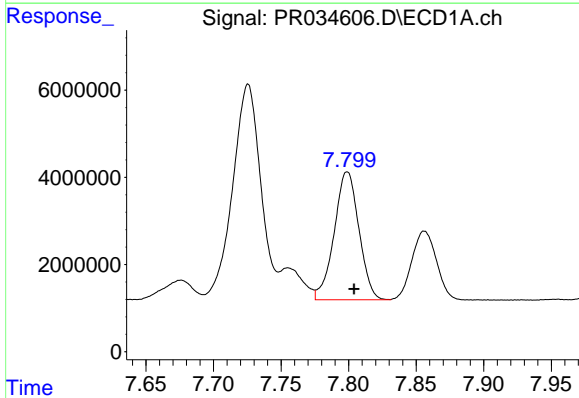
Instrument :
 ECD_R
 ClientSampleId :
 AR1660CCC500

Manual Integrations
 APPROVED
 sohil
 12/17/2018 3:04:48 AM



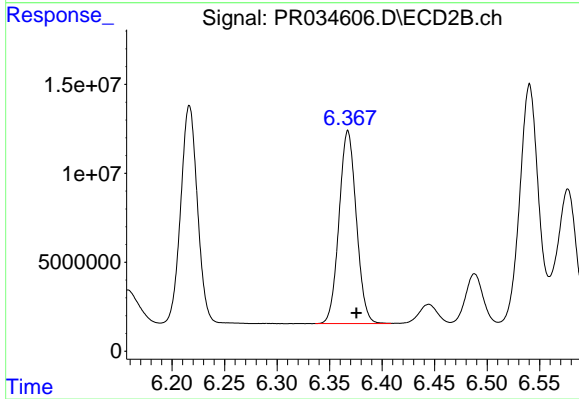
#32 AR-1260-2

R.T.: 6.217 min
 Delta R.T.: -0.008 min
 Response: 136242861
 Conc: 449.54 ng/ml



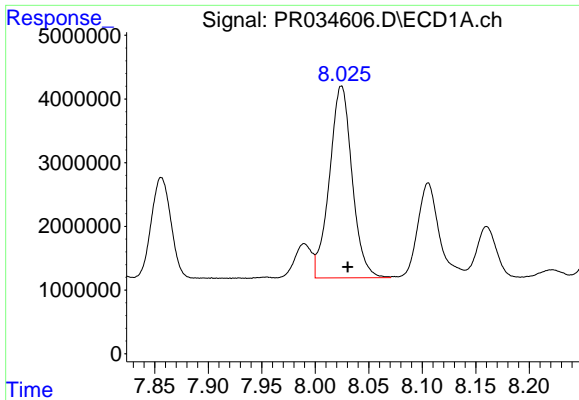
#33 AR-1260-3

R.T.: 7.799 min
 Delta R.T.: -0.005 min
 Response: 37428908
 Conc: 453.42 ng/ml



#33 AR-1260-3

R.T.: 6.367 min
 Delta R.T.: -0.009 min
 Response: 124312617
 Conc: 436.15 ng/ml m

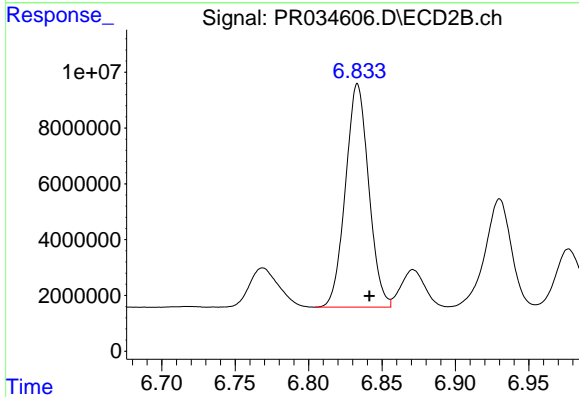


#34 AR-1260-4

R.T.: 8.024 min
 Delta R.T.: -0.006 min
 Response: 44399617
 Conc: 444.55 ng/ml

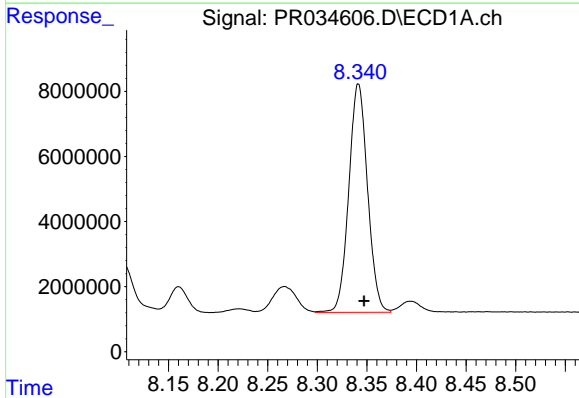
Instrument :
 ECD_R
ClientSampled :
 AR1660CCC500

Manual Integrations
APPROVED
 sohil
 12/17/2018 3:04:48 AM



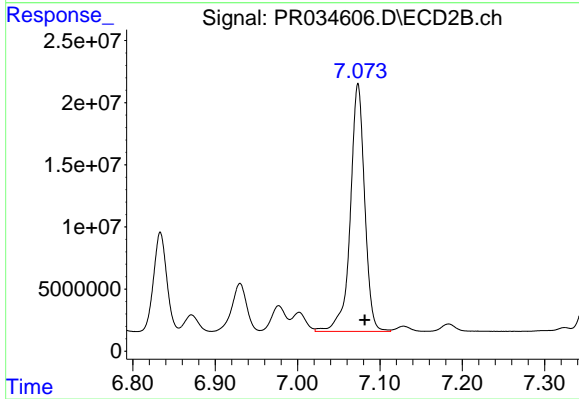
#34 AR-1260-4

R.T.: 6.833 min
 Delta R.T.: -0.008 min
 Response: 88086381
 Conc: 446.44 ng/ml



#35 AR-1260-5

R.T.: 8.341 min
 Delta R.T.: -0.006 min
 Response: 92282537
 Conc: 471.12 ng/ml



#35 AR-1260-5

R.T.: 7.073 min
 Delta R.T.: -0.008 min
 Response: 241478083
 Conc: 472.12 ng/ml