

Data Path : Z:\pestpcbsrv\HPCHEM1\ECD_R\Data\PR121523\
 Data File : PR064747.D
 Signal(s) : Signal #1: ECD1A.ch Signal #2: ECD2B.ch
 Acq On : 15 Dec 2023 20:44
 Operator : AJ\MA
 Sample : PB157835BS
 Misc :
 ALS Vial : 43 Sample Multiplier: 1

Instrument :
 ECD_R
 ClientSampleId :

Integration File signal 1: autoint1.e
 Integration File signal 2: autoint2.e
 Quant Time: Dec 16 05:15:45 2023
 Quant Method : Z:\pestpcbsrv\HPCHEM1\ECD_R\Method\PR121423CLP.M
 Quant Title : GC EXTRACTABLES
 QLast Update : Fri Dec 15 04:19:57 2023
 Response via : Initial Calibration
 Integrator: ChemStation

Volume Inj. : 1 µl
 Signal #1 Phase : ZB MR1 Signal #2 Phase: ZB MR2
 Signal #1 Info : 30Mx0.32mmx 0.5µm Signal #2 Info : 30M x 0.32mm x 0.25µm

Compound	RT#1	RT#2	Resp#1	Resp#2	ng/ml	ng/ml

System Monitoring Compounds						
1) SA Tetrachlo...	3.702	3.008	120.9E6	112.7E6	20.011	20.875
2) SA Decachlor...	9.722	8.385	84750998	87130896	38.461	33.277
Target Compounds						
3) L1 AR-1016-1	4.940	4.155	18951939	18773837	104.689	101.173
4) L1 AR-1016-2	4.963	4.174	27997829	25151675	105.535	99.077
5) L1 AR-1016-3	5.028	4.356	17914145	13467613	106.261	97.600
6) L1 AR-1016-4	5.131	4.408	14017437	10825440	102.945	101.700
7) L1 AR-1016-5	5.450	4.632	14039704	13706221	102.289	97.829
8) L2 AR-1221-1	3.920	3.237	2575085	1772668	37.589	29.285
9) L2 AR-1221-2	4.017	3.324	3818308	3127835	81.971	74.115
10) L2 AR-1221-3	4.095	3.406	11432885	9521788	74.305	66.476
11) L3 AR-1232-1	4.095	3.406	11432885	9521788	95.657	86.444
12) L3 AR-1232-2	4.651	4.174	15013643	25151675	225.199	235.016
13) L3 AR-1232-3	4.963	4.356	27997829	13467613	244.340	237.765
14) L3 AR-1232-4	5.131	4.451	14017437	13316828	239.618	268.422
15) L3 AR-1232-5	5.236	4.632	11593619	13706221	272.700	253.239
16) L4 AR-1242-1	4.940	4.155	18951939	18773837	130.993	128.003
17) L4 AR-1242-2	4.963	4.174	27997829	25151675	134.114	126.306
18) L4 AR-1242-3	5.028	4.356	17914145	13467613	132.433	124.514
19) L4 AR-1242-4	5.131	4.451	14017437	13316828	129.879	128.064
20) L4 AR-1242-5	5.929	5.010	2348325	11638172	20.517	86.544 #
21) L5 AR-1248-1	4.940	4.155	18951939	18773837	173.143	169.074
22) L5 AR-1248-2	5.236	4.408	11593619	10825440	74.234	72.043
23) L5 AR-1248-3	5.450	4.451	14039704	13316828	76.816	84.761
24) L5 AR-1248-4	5.888	4.632	2197777	13706221	11.237	72.219 #
25) L5 AR-1248-5	5.929	5.054	2348325	2109683	12.012	10.924
26) L6 AR-1254-1	5.860	5.010	11375794	11638172	56.566	40.483 #
27) L6 AR-1254-2	6.101	5.172	11120277	11210102	36.562	45.016
28) L6 AR-1254-3	6.494	5.605	6466494	5242238	20.775	13.174 #
29) L6 AR-1254-4	6.810	5.855	4050277	2227368	18.419	8.920 #
30) L6 AR-1254-5	7.268	6.307	33041240	39035040	139.123	109.538
31) L7 AR-1260-1	6.678	5.746	25763782	27852697	103.100	96.384
32) L7 AR-1260-2	6.963	5.954	28373680	33540202	99.261	96.538
33) L7 AR-1260-3	7.358	6.116	19520561	30804128	92.065	93.586
34) L7 AR-1260-4	7.601	6.632	20850422	22142386	90.712	82.093
35) L7 AR-1260-5	7.944	6.901	36635937	52512102	85.382	84.031
36) L8 AR-1262-1	7.358	6.352	19520561	23590825	67.884	64.618
37) L8 AR-1262-2	7.944	6.901	36635937	52512102	78.635	79.594
38) L8 AR-1262-3	8.265	7.210	28241841	9985578	89.576	39.823 #
39) L8 AR-1262-4	8.345	7.277	4848915	35214864	20.336	73.780 #
40) L8 AR-1262-5	8.995	7.824	10954288	10279058	67.402	48.412 #
41) L9 AR-1268-1	8.265	7.210	28241841	9985578	49.559	12.774 #

Data Path : Z:\pestpcbsrv\HPCHEM1\ECD_R\Data\PR121523\
 Data File : PR064747.D
 Signal(s) : Signal #1: ECD1A.ch Signal #2: ECD2B.ch
 Acq On : 15 Dec 2023 20:44
 Operator : AJ\MA
 Sample : PB157835BS
 Misc :
 ALS Vial : 43 Sample Multiplier: 1

Instrument :
 ECD_R
 ClientSampleId :

Integration File signal 1: autoint1.e
 Integration File signal 2: autoint2.e
 Quant Time: Dec 16 05:15:45 2023
 Quant Method : Z:\pestpcbsrv\HPCHEM1\ECD_R\Method\PR121423CLP.M
 Quant Title : GC EXTRACTABLES
 QLast Update : Fri Dec 15 04:19:57 2023
 Response via : Initial Calibration
 Integrator: ChemStation

Volume Inj. : 1 µl
 Signal #1 Phase : ZB MR1 Signal #2 Phase: ZB MR2
 Signal #1 Info : 30Mx0.32mmx 0.5µm Signal #2 Info : 30M x 0.32mm x 0.25µm

	Compound	RT#1	RT#2	Resp#1	Resp#2	ng/ml	ng/ml
42)	L9 AR-1268-2	8.345	7.277	4848915	35214864	9.579	49.071 #
43)	L9 AR-1268-3	8.573	7.507	505821	860676	1.143	1.437 #
44)	L9 AR-1268-4	8.995	7.824	10954288	10279058	58.948	41.146 #
45)	L9 AR-1268-5	9.399	8.125	2415736	3738278	1.804	2.079

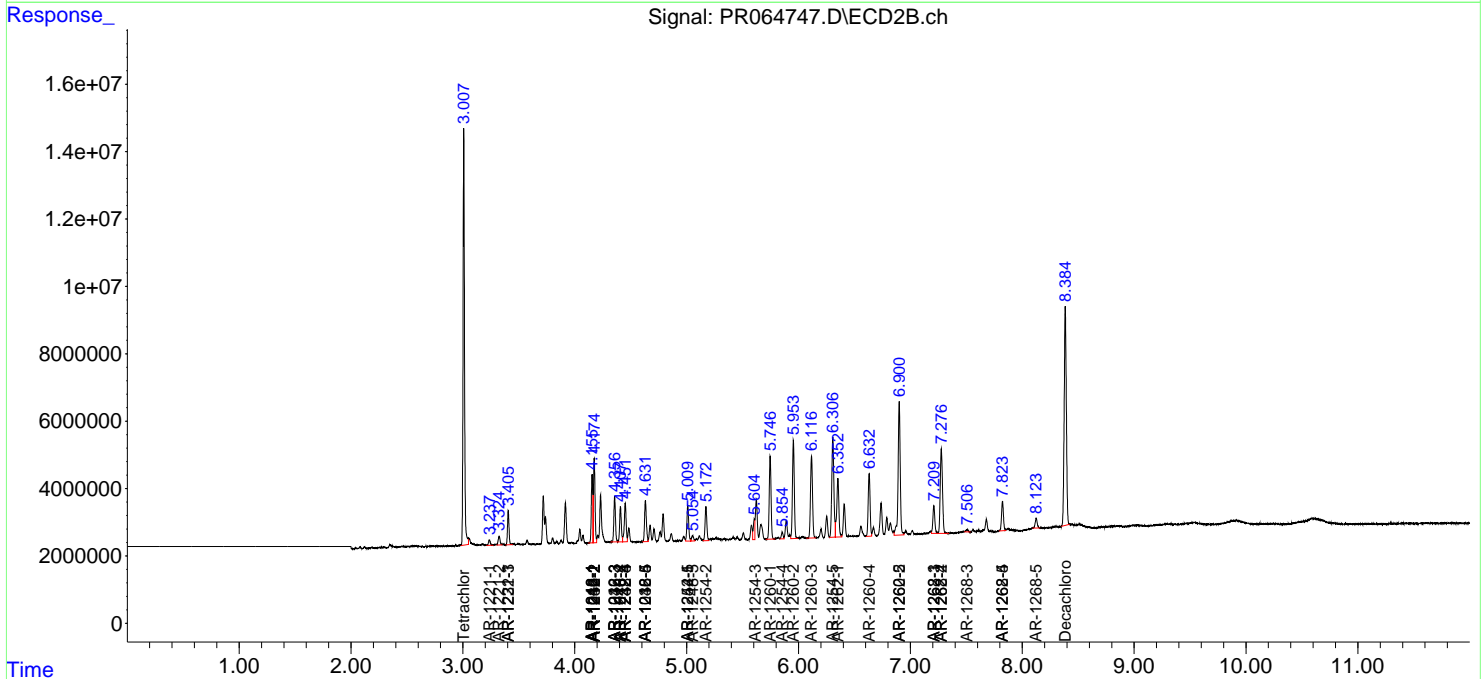
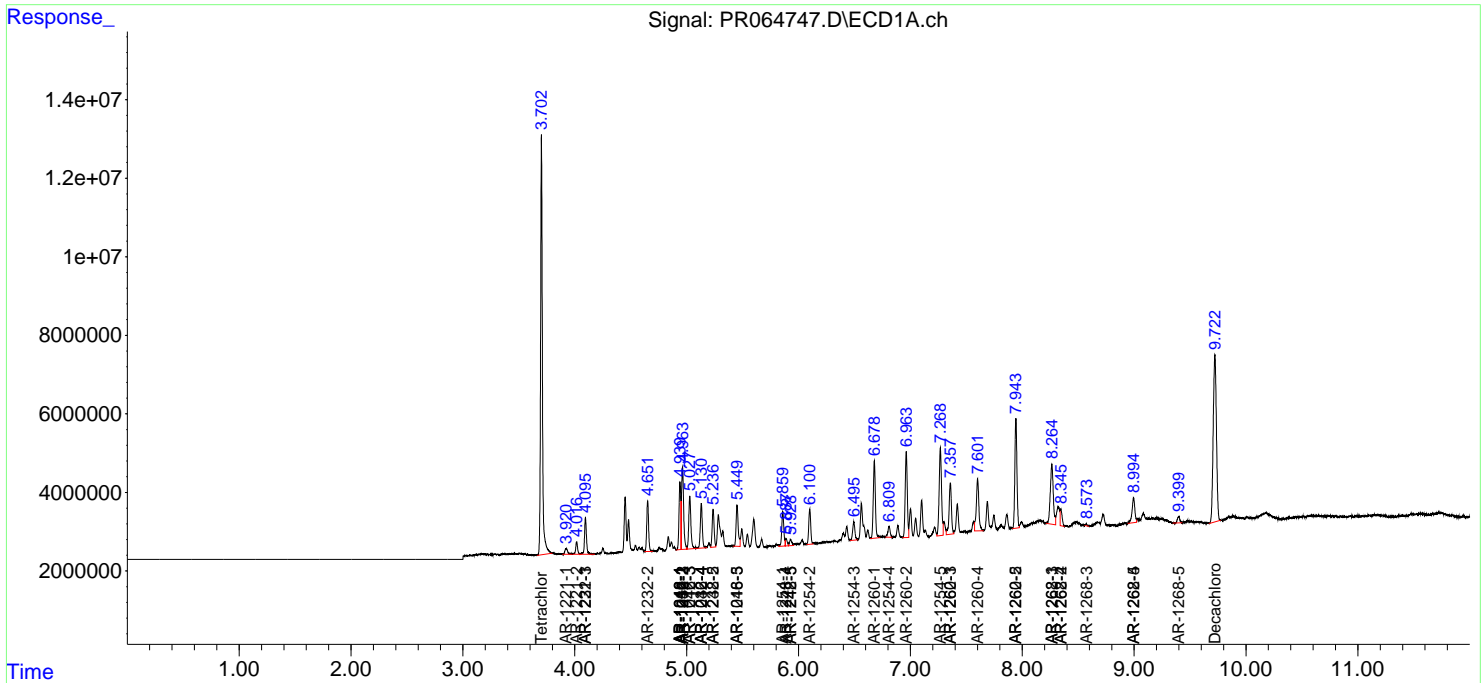
(f)=RT Delta > 1/2 Window (#)=Amounts differ by > 25% (m)=manual int.

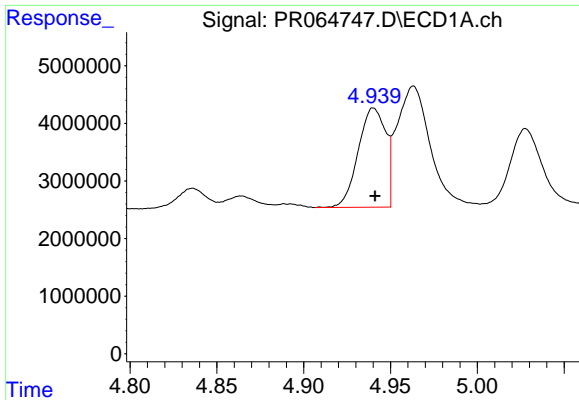
Data Path : Z:\pestpcbsrv\HPCHEM1\ECD_R\Data\PR121523\
 Data File : PR064747.D
 Signal(s) : Signal #1: ECD1A.ch Signal #2: ECD2B.ch
 Acq On : 15 Dec 2023 20:44
 Operator : AJ\MA
 Sample : PB157835BS
 Misc :
 ALS Vial : 43 Sample Multiplier: 1

Instrument :
 ECD_R
 ClientSampleId :

Integration File signal 1: autoint1.e
 Integration File signal 2: autoint2.e
 Quant Time: Dec 16 05:15:45 2023
 Quant Method : Z:\pestpcbsrv\HPCHEM1\ECD_R\Method\PR121423CLP.M
 Quant Title : GC EXTRACTABLES
 QLast Update : Fri Dec 15 04:19:57 2023
 Response via : Initial Calibration
 Integrator: ChemStation

Volume Inj. : 1 µl
 Signal #1 Phase : ZB MR1 Signal #2 Phase: ZB MR2
 Signal #1 Info : 30Mx0.32mmx 0.5µm Signal #2 Info : 30M x 0.32mm x 0.25µm

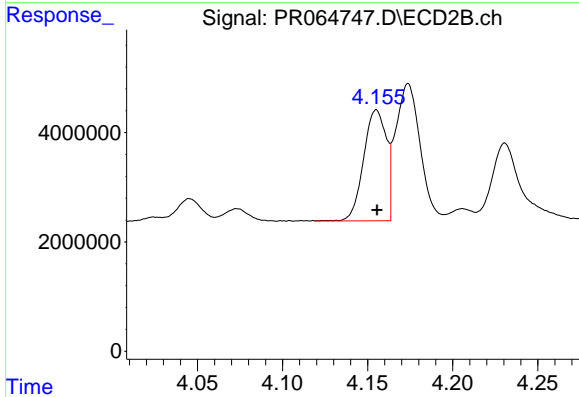




#3 AR-1016-1

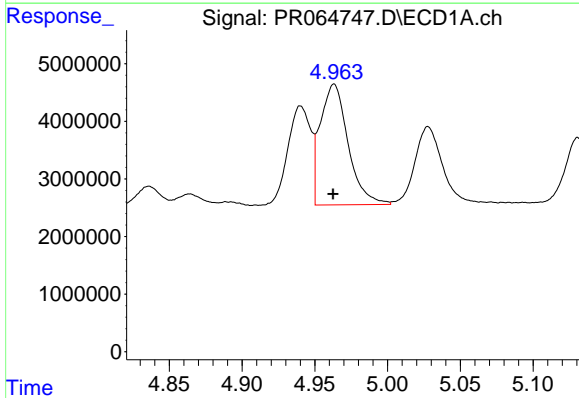
R.T.: 4.940 min
 Delta R.T.: 0.000 min
 Response: 18951939
 Conc: 104.69 ng/ml

Instrument :
 ECD_R
 ClientSampleId :



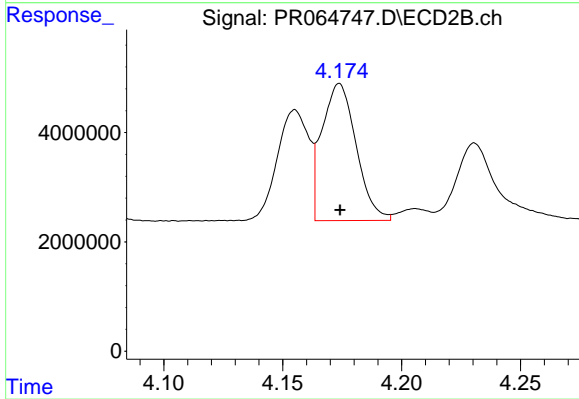
#3 AR-1016-1

R.T.: 4.155 min
 Delta R.T.: 0.000 min
 Response: 18773837
 Conc: 101.17 ng/ml



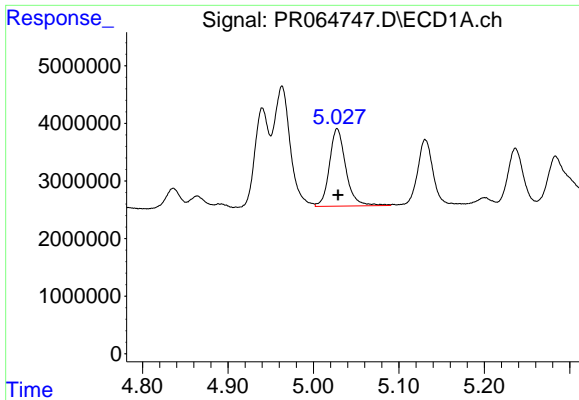
#4 AR-1016-2

R.T.: 4.963 min
 Delta R.T.: 0.000 min
 Response: 27997829
 Conc: 105.53 ng/ml



#4 AR-1016-2

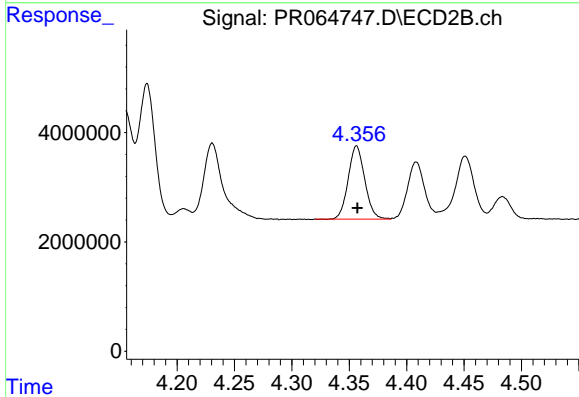
R.T.: 4.174 min
 Delta R.T.: 0.000 min
 Response: 25151675
 Conc: 99.08 ng/ml



#5 AR-1016-3

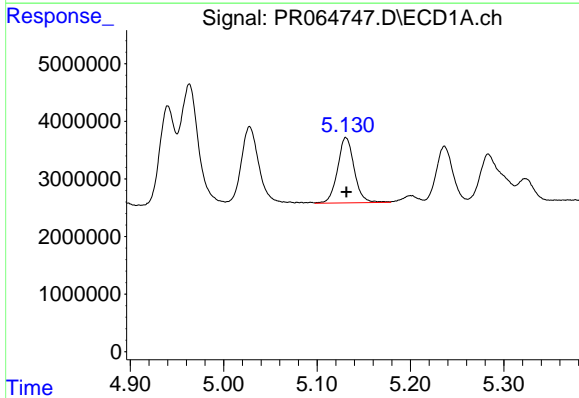
R.T.: 5.028 min
Delta R.T.: 0.000 min
Response: 17914145
Conc: 106.26 ng/ml

Instrument :
ECD_R
ClientSampleId :



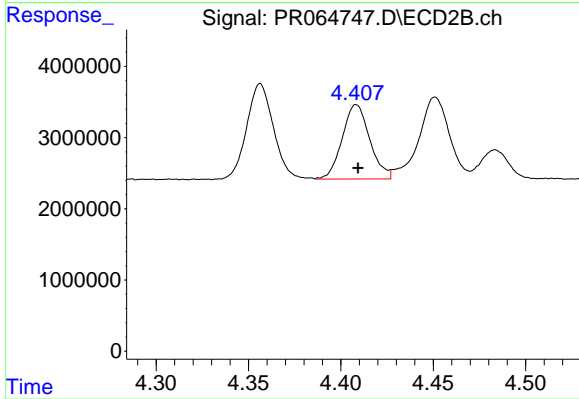
#5 AR-1016-3

R.T.: 4.356 min
Delta R.T.: 0.000 min
Response: 13467613
Conc: 97.60 ng/ml



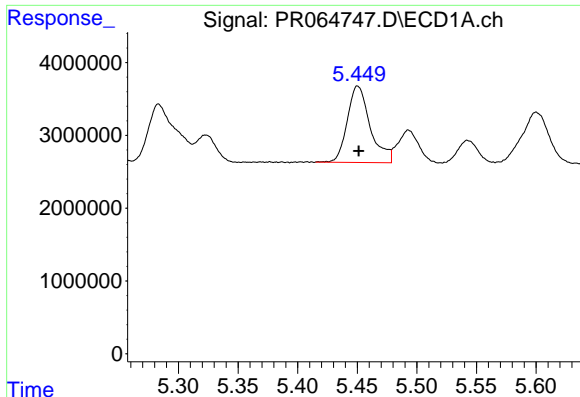
#6 AR-1016-4

R.T.: 5.131 min
Delta R.T.: 0.000 min
Response: 14017437
Conc: 102.95 ng/ml



#6 AR-1016-4

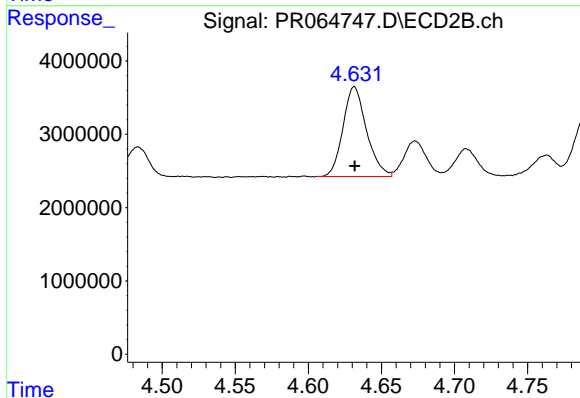
R.T.: 4.408 min
Delta R.T.: 0.000 min
Response: 10825440
Conc: 101.70 ng/ml



#7 AR-1016-5

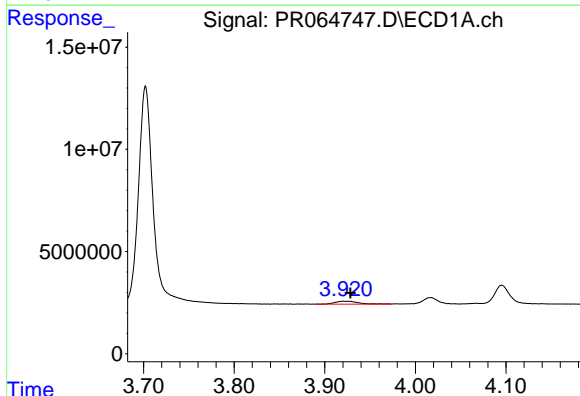
R.T.: 5.450 min
 Delta R.T.: 0.000 min
 Response: 14039704
 Conc: 102.29 ng/ml

Instrument :
 ECD_R
 ClientSampleId :



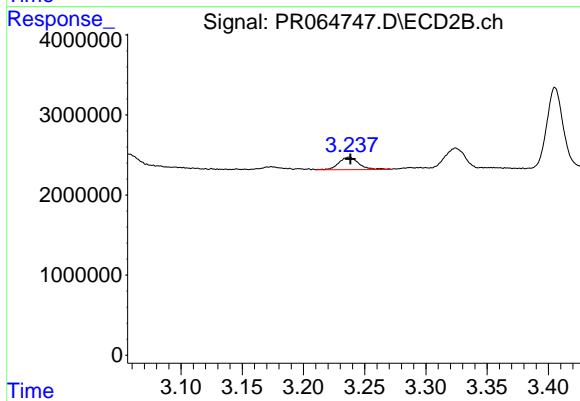
#7 AR-1016-5

R.T.: 4.632 min
 Delta R.T.: 0.000 min
 Response: 13706221
 Conc: 97.83 ng/ml



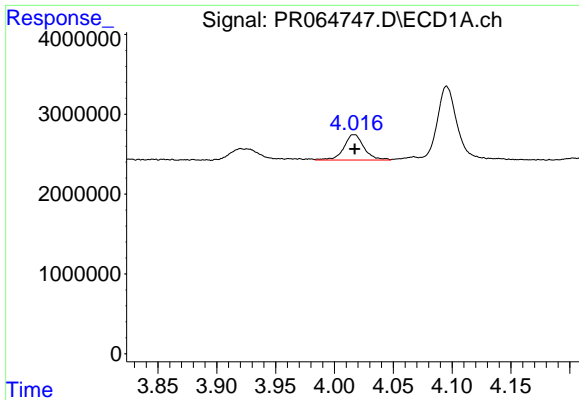
#8 AR-1221-1

R.T.: 3.920 min
 Delta R.T.: -0.008 min
 Response: 2575085
 Conc: 37.59 ng/ml



#8 AR-1221-1

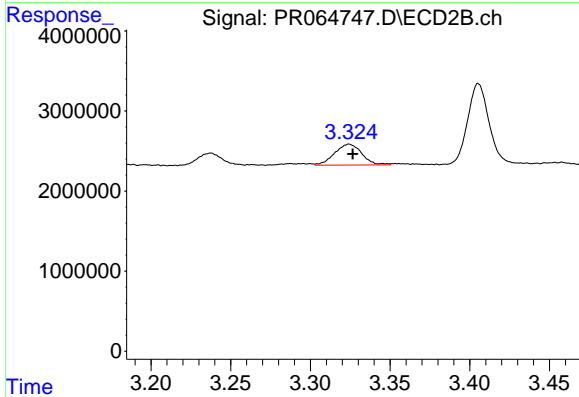
R.T.: 3.237 min
 Delta R.T.: -0.001 min
 Response: 1772668
 Conc: 29.29 ng/ml



#9 AR-1221-2

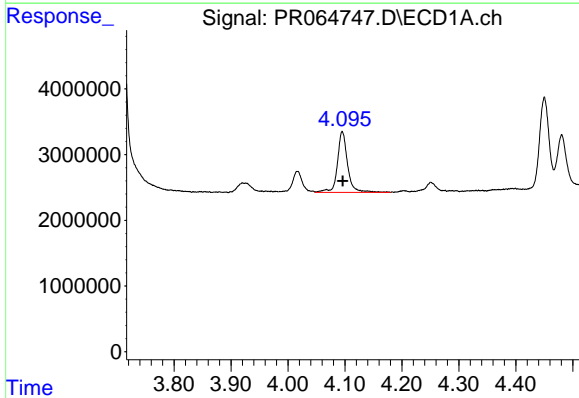
R.T.: 4.017 min
 Delta R.T.: 0.000 min
 Response: 3818308
 Conc: 81.97 ng/ml

Instrument :
 ECD_R
 ClientSampleId :



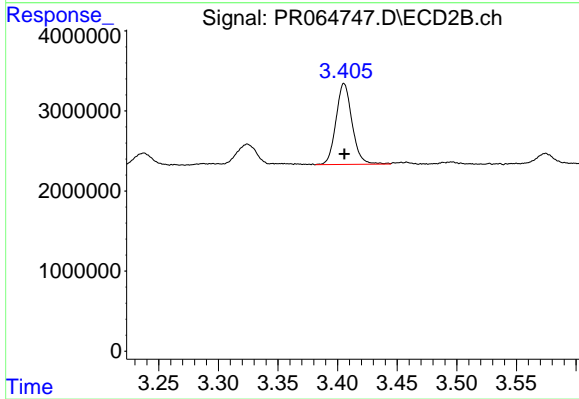
#9 AR-1221-2

R.T.: 3.324 min
 Delta R.T.: -0.002 min
 Response: 3127835
 Conc: 74.12 ng/ml



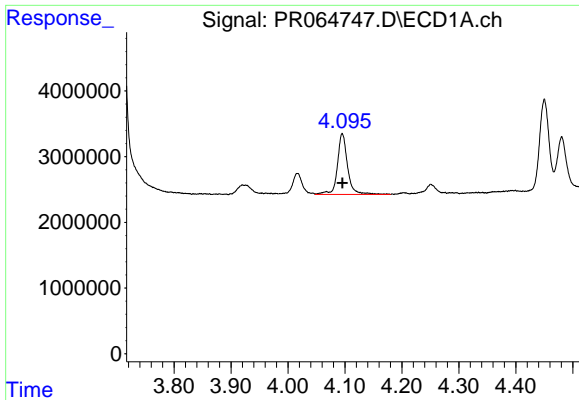
#10 AR-1221-3

R.T.: 4.095 min
 Delta R.T.: 0.000 min
 Response: 11432885
 Conc: 74.30 ng/ml



#10 AR-1221-3

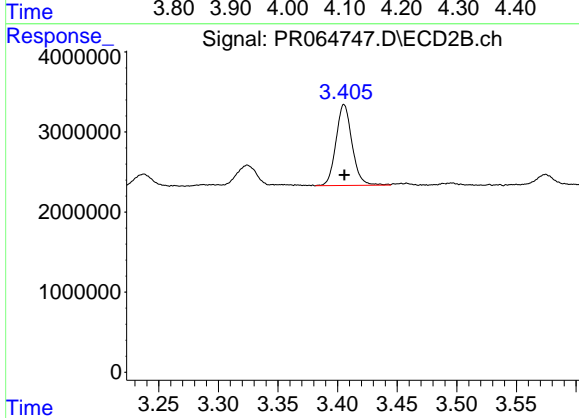
R.T.: 3.406 min
 Delta R.T.: 0.000 min
 Response: 9521788
 Conc: 66.48 ng/ml



#11 AR-1232-1

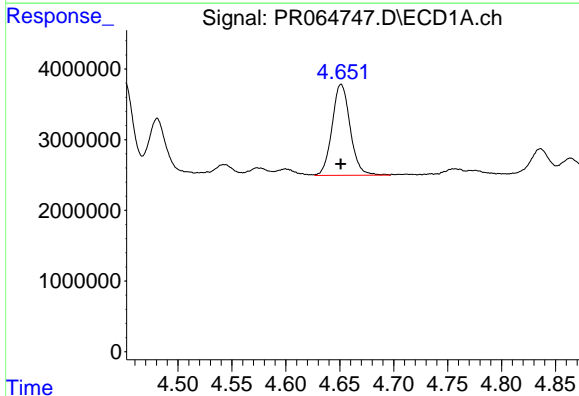
R.T.: 4.095 min
 Delta R.T.: 0.000 min
 Response: 11432885
 Conc: 95.66 ng/ml

Instrument :
 ECD_R
 ClientSampleId :



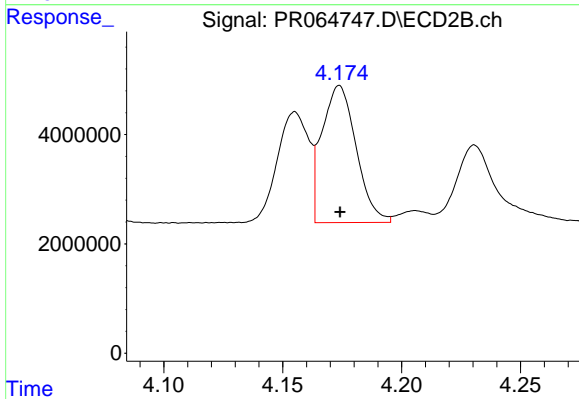
#11 AR-1232-1

R.T.: 3.406 min
 Delta R.T.: 0.000 min
 Response: 9521788
 Conc: 86.44 ng/ml



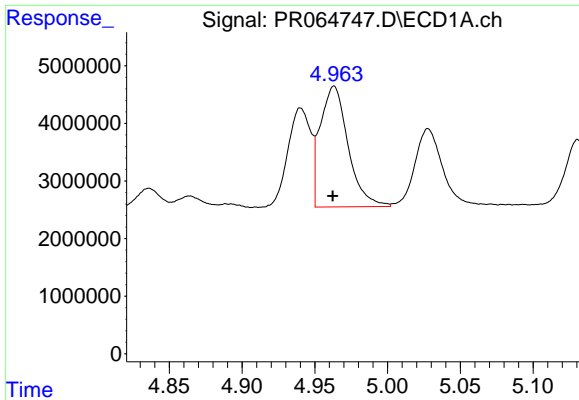
#12 AR-1232-2

R.T.: 4.651 min
 Delta R.T.: 0.000 min
 Response: 15013643
 Conc: 225.20 ng/ml



#12 AR-1232-2

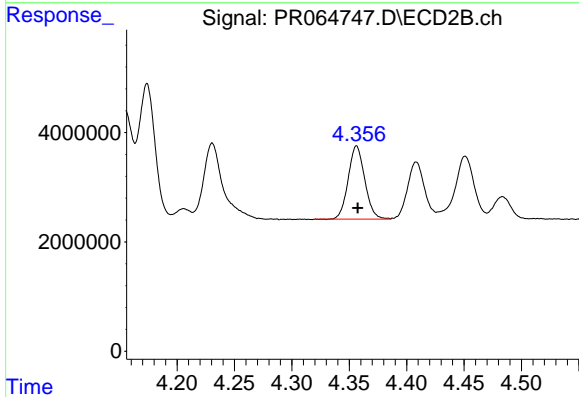
R.T.: 4.174 min
 Delta R.T.: 0.000 min
 Response: 25151675
 Conc: 235.02 ng/ml



#13 AR-1232-3

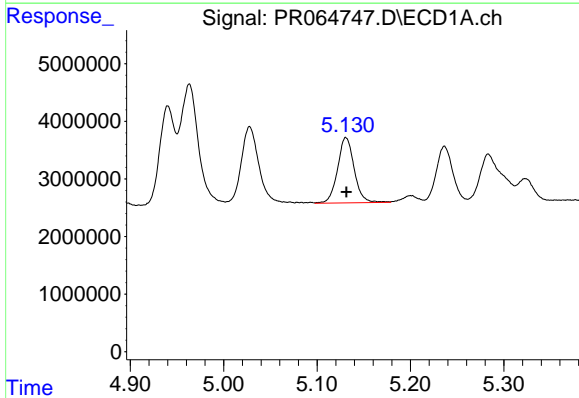
R.T.: 4.963 min
 Delta R.T.: 0.000 min
 Response: 27997829
 Conc: 244.34 ng/ml

Instrument :
 ECD_R
 ClientSampleId :



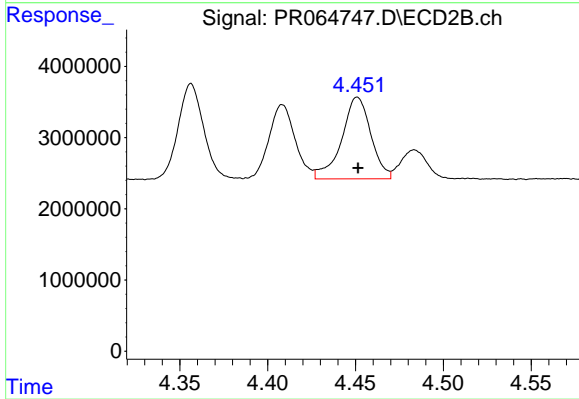
#13 AR-1232-3

R.T.: 4.356 min
 Delta R.T.: 0.000 min
 Response: 13467613
 Conc: 237.77 ng/ml



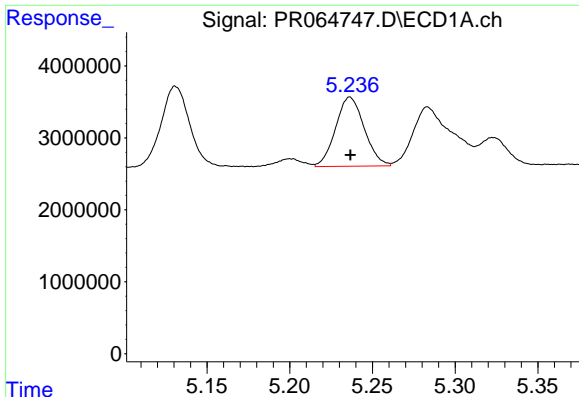
#14 AR-1232-4

R.T.: 5.131 min
 Delta R.T.: 0.000 min
 Response: 14017437
 Conc: 239.62 ng/ml



#14 AR-1232-4

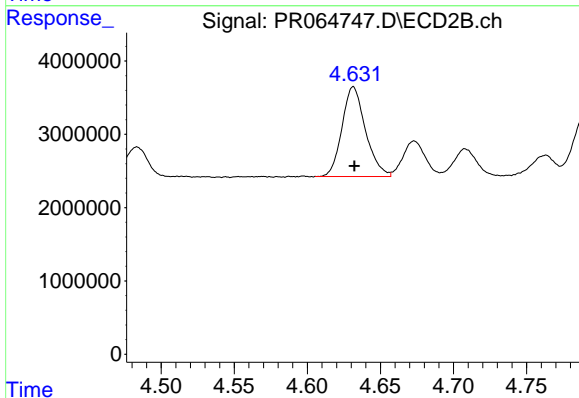
R.T.: 4.451 min
 Delta R.T.: 0.000 min
 Response: 13316828
 Conc: 268.42 ng/ml



#15 AR-1232-5

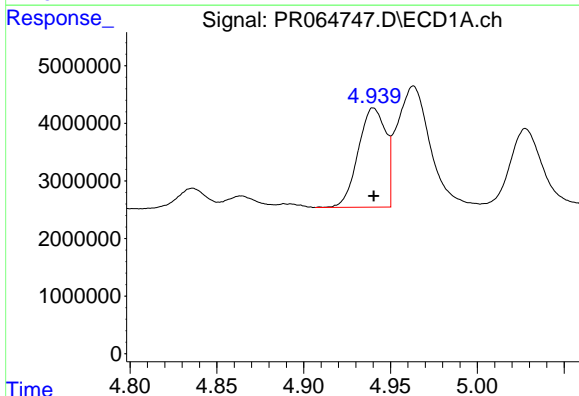
R.T.: 5.236 min
 Delta R.T.: 0.000 min
 Response: 11593619
 Conc: 272.70 ng/ml

Instrument :
 ECD_R
 ClientSampleId :



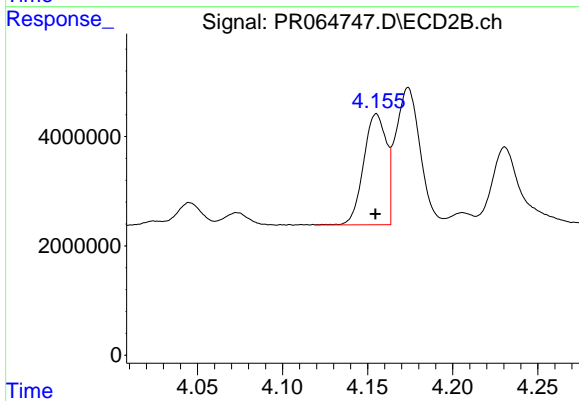
#15 AR-1232-5

R.T.: 4.632 min
 Delta R.T.: 0.000 min
 Response: 13706221
 Conc: 253.24 ng/ml



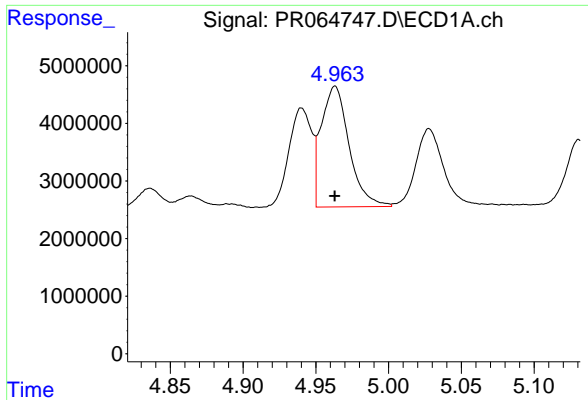
#16 AR-1242-1

R.T.: 4.940 min
 Delta R.T.: 0.000 min
 Response: 18951939
 Conc: 130.99 ng/ml



#16 AR-1242-1

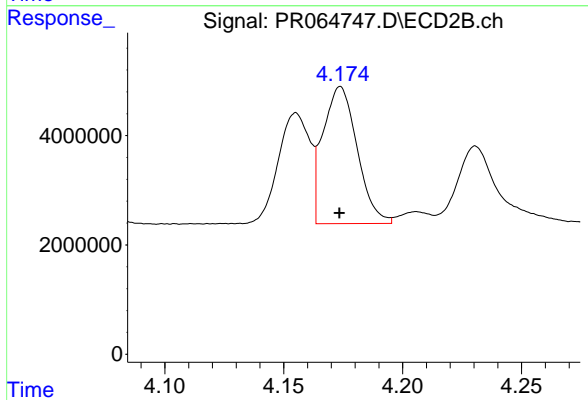
R.T.: 4.155 min
 Delta R.T.: 0.000 min
 Response: 18773837
 Conc: 128.00 ng/ml



#17 AR-1242-2

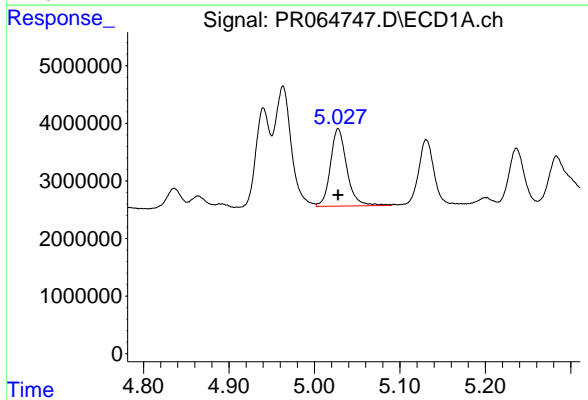
R.T.: 4.963 min
Delta R.T.: 0.000 min
Response: 27997829
Conc: 134.11 ng/ml

Instrument :
ECD_R
ClientSampleId :



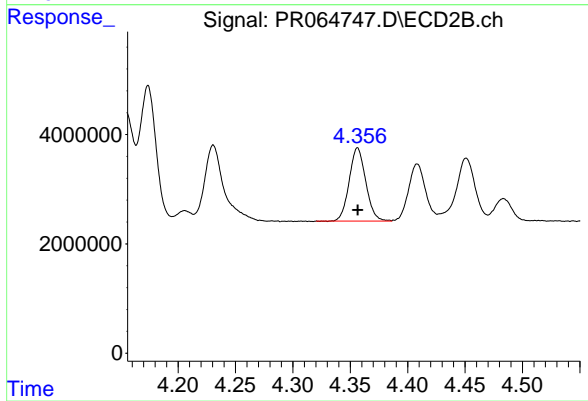
#17 AR-1242-2

R.T.: 4.174 min
Delta R.T.: 0.000 min
Response: 25151675
Conc: 126.31 ng/ml



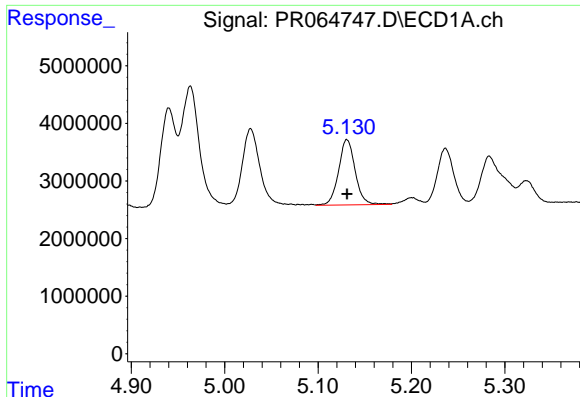
#18 AR-1242-3

R.T.: 5.028 min
Delta R.T.: 0.000 min
Response: 17914145
Conc: 132.43 ng/ml



#18 AR-1242-3

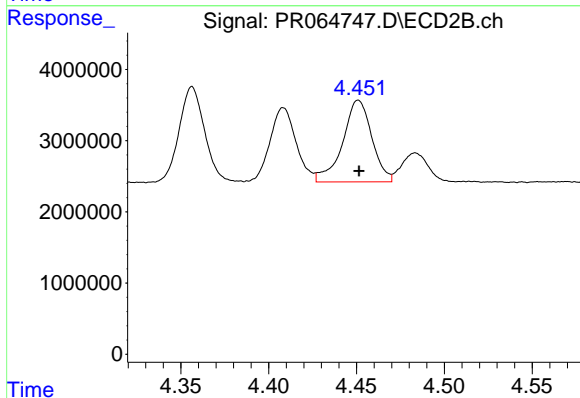
R.T.: 4.356 min
Delta R.T.: 0.000 min
Response: 13467613
Conc: 124.51 ng/ml



#19 AR-1242-4

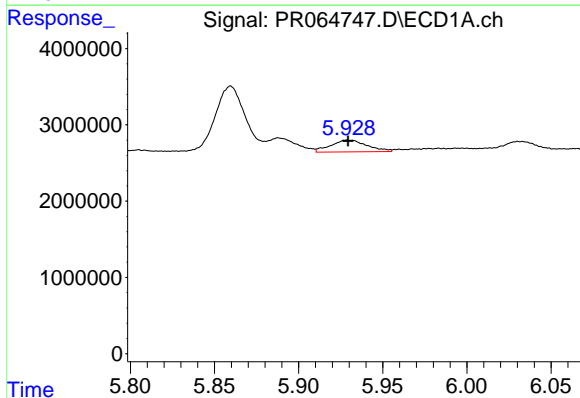
R.T.: 5.131 min
 Delta R.T.: 0.000 min
 Response: 14017437
 Conc: 129.88 ng/ml

Instrument :
 ECD_R
 ClientSampleId :



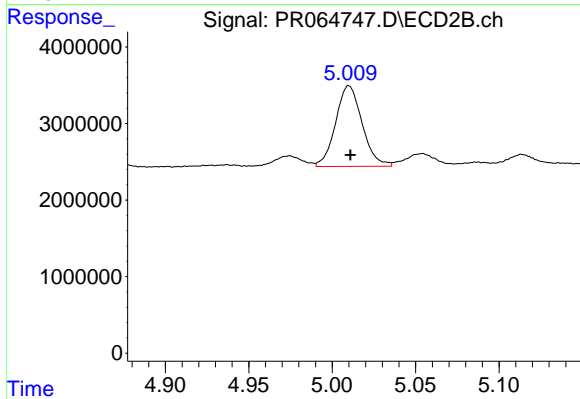
#19 AR-1242-4

R.T.: 4.451 min
 Delta R.T.: 0.000 min
 Response: 13316828
 Conc: 128.06 ng/ml



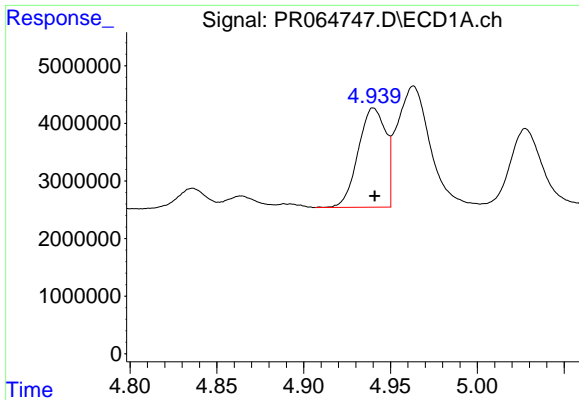
#20 AR-1242-5

R.T.: 5.929 min
 Delta R.T.: 0.000 min
 Response: 2348325
 Conc: 20.52 ng/ml



#20 AR-1242-5

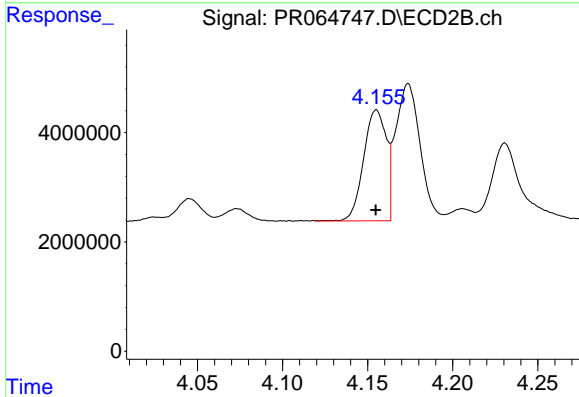
R.T.: 5.010 min
 Delta R.T.: 0.000 min
 Response: 11638172
 Conc: 86.54 ng/ml



#21 AR-1248-1

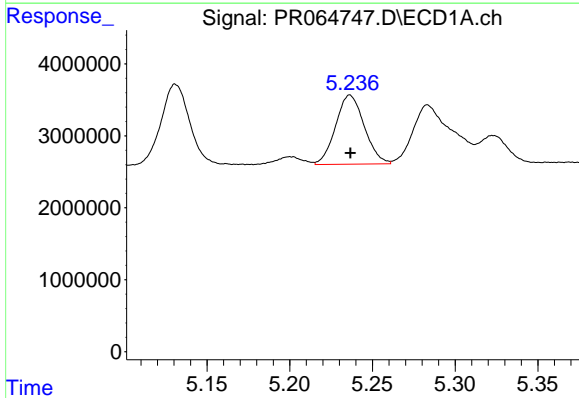
R.T.: 4.940 min
Delta R.T.: 0.000 min
Response: 18951939
Conc: 173.14 ng/ml

Instrument :
ECD_R
ClientSampleId :



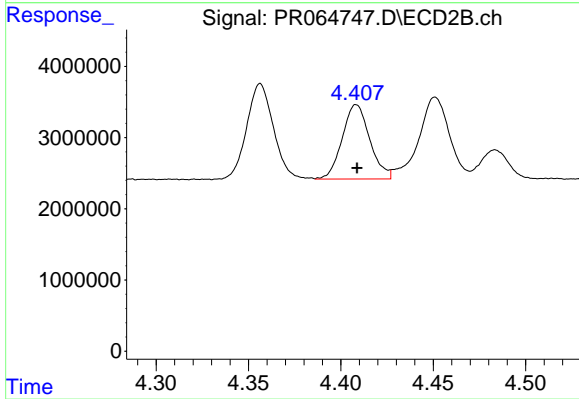
#21 AR-1248-1

R.T.: 4.155 min
Delta R.T.: 0.000 min
Response: 18773837
Conc: 169.07 ng/ml



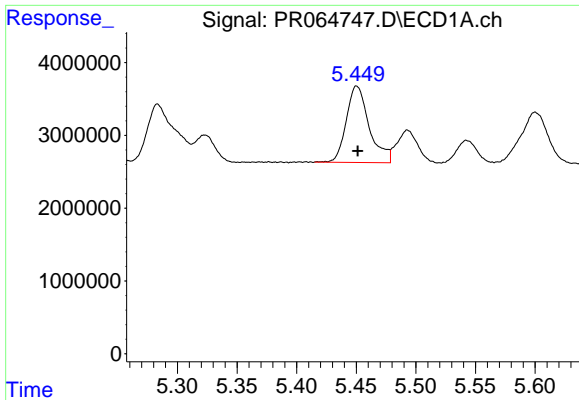
#22 AR-1248-2

R.T.: 5.236 min
Delta R.T.: 0.000 min
Response: 11593619
Conc: 74.23 ng/ml



#22 AR-1248-2

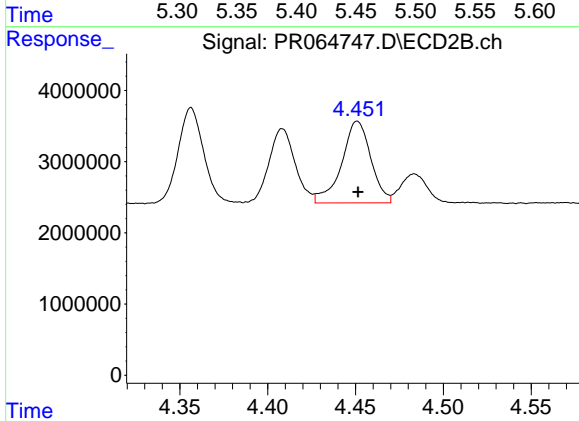
R.T.: 4.408 min
Delta R.T.: 0.000 min
Response: 10825440
Conc: 72.04 ng/ml



#23 AR-1248-3

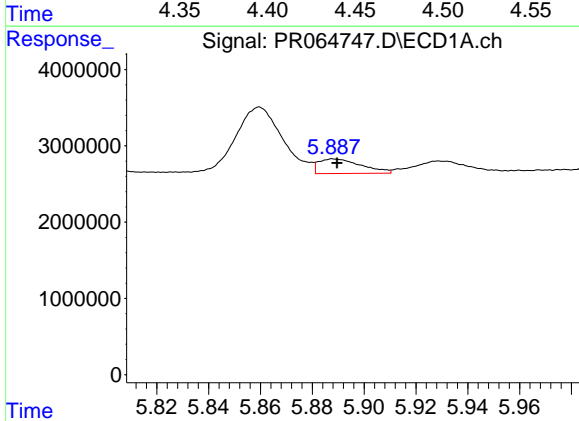
R.T.: 5.450 min
 Delta R.T.: 0.000 min
 Response: 14039704
 Conc: 76.82 ng/ml

Instrument :
 ECD_R
 ClientSampleId :



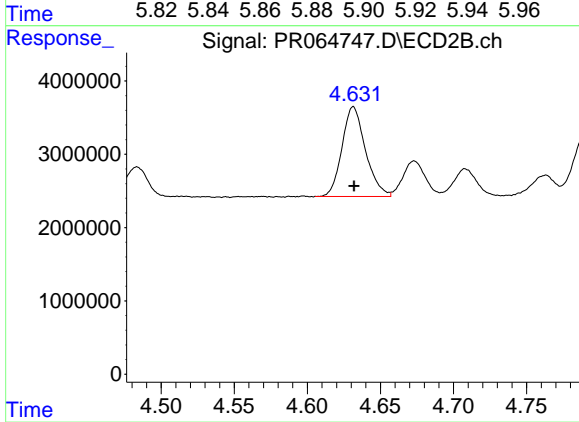
#23 AR-1248-3

R.T.: 4.451 min
 Delta R.T.: 0.000 min
 Response: 13316828
 Conc: 84.76 ng/ml



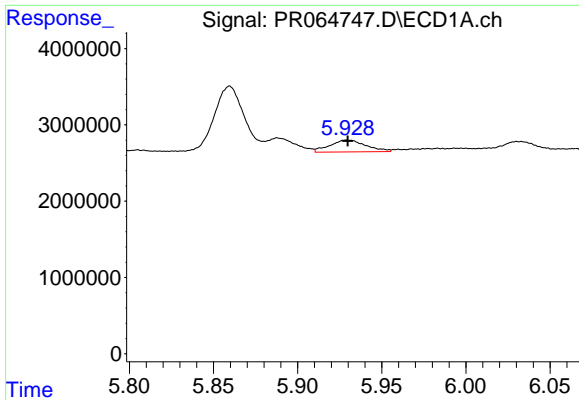
#24 AR-1248-4

R.T.: 5.888 min
 Delta R.T.: -0.001 min
 Response: 2197777
 Conc: 11.24 ng/ml



#24 AR-1248-4

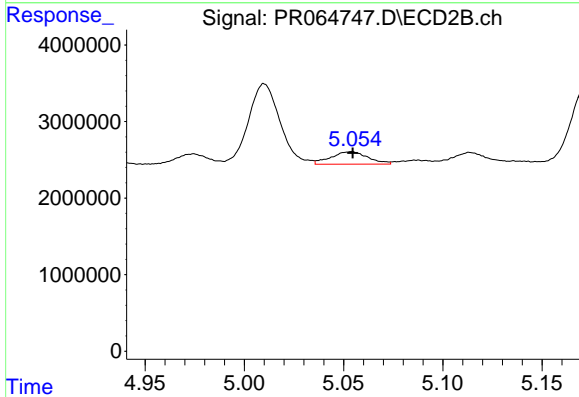
R.T.: 4.632 min
 Delta R.T.: 0.000 min
 Response: 13706221
 Conc: 72.22 ng/ml



#25 AR-1248-5

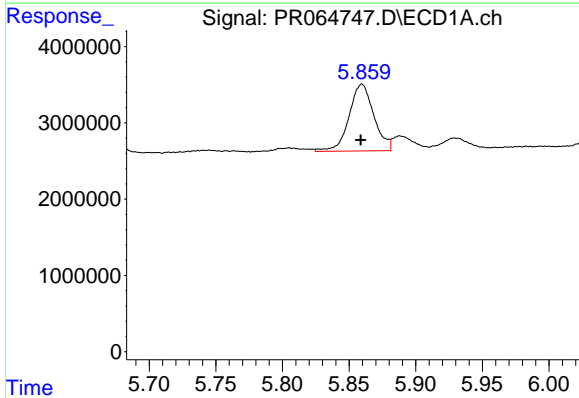
R.T.: 5.929 min
 Delta R.T.: 0.000 min
 Response: 2348325
 Conc: 12.01 ng/ml

Instrument :
 ECD_R
 ClientSampleId :



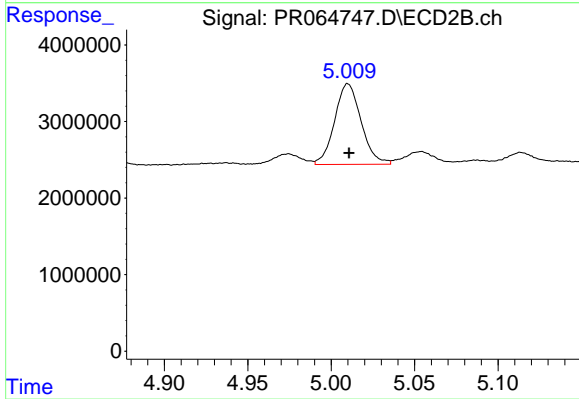
#25 AR-1248-5

R.T.: 5.054 min
 Delta R.T.: 0.000 min
 Response: 2109683
 Conc: 10.92 ng/ml



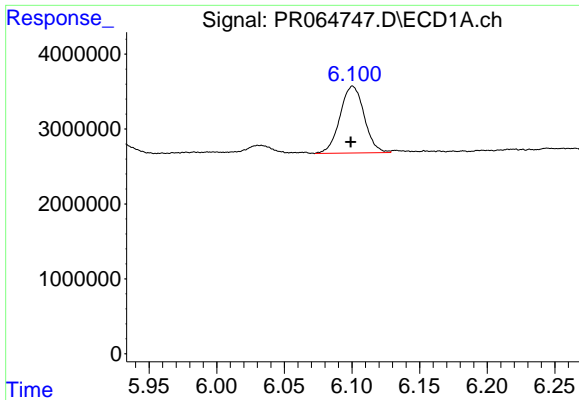
#26 AR-1254-1

R.T.: 5.860 min
 Delta R.T.: 0.000 min
 Response: 11375794
 Conc: 56.57 ng/ml



#26 AR-1254-1

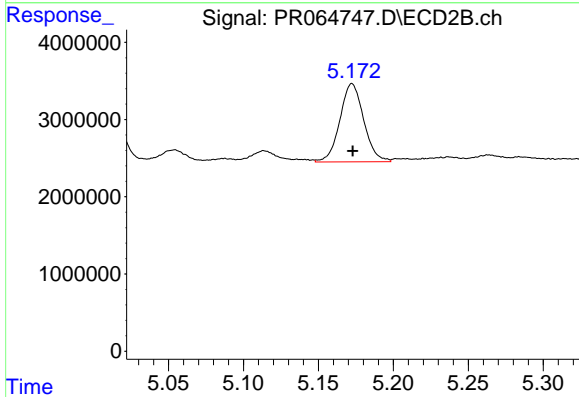
R.T.: 5.010 min
 Delta R.T.: 0.000 min
 Response: 11638172
 Conc: 40.48 ng/ml



#27 AR-1254-2

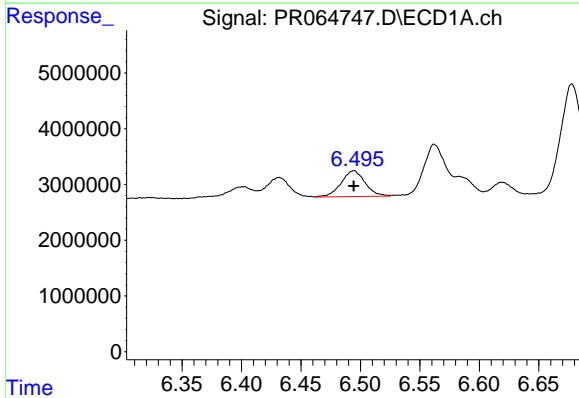
R.T.: 6.101 min
 Delta R.T.: 0.001 min
 Response: 11120277
 Conc: 36.56 ng/ml

Instrument :
 ECD_R
 ClientSampleId :



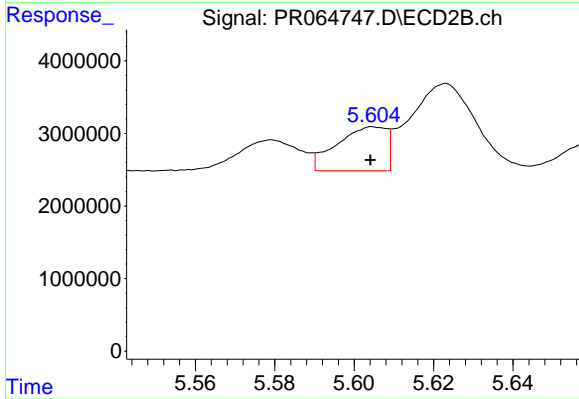
#27 AR-1254-2

R.T.: 5.172 min
 Delta R.T.: 0.000 min
 Response: 11210102
 Conc: 45.02 ng/ml



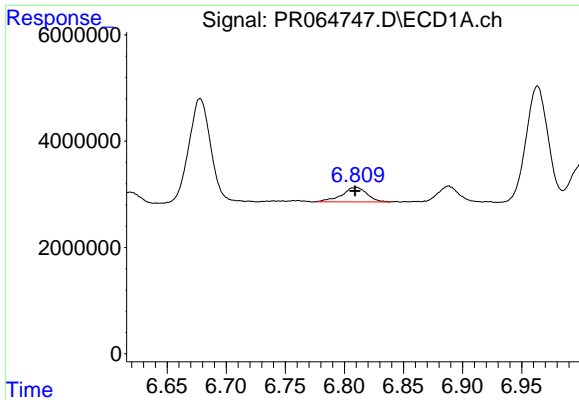
#28 AR-1254-3

R.T.: 6.494 min
 Delta R.T.: 0.000 min
 Response: 6466494
 Conc: 20.77 ng/ml



#28 AR-1254-3

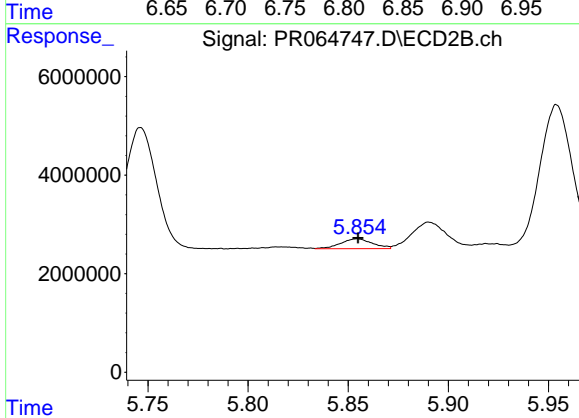
R.T.: 5.605 min
 Delta R.T.: 0.001 min
 Response: 5242238
 Conc: 13.17 ng/ml



#29 AR-1254-4

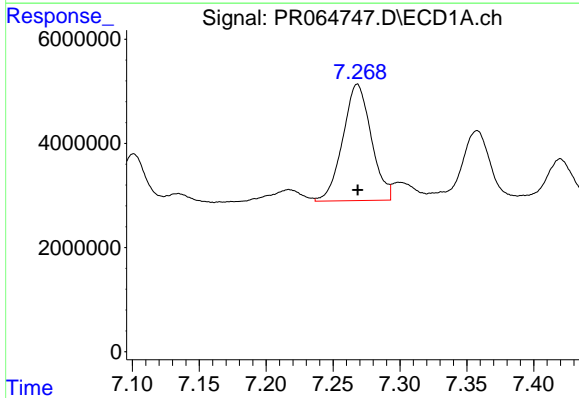
R.T.: 6.810 min
 Delta R.T.: 0.000 min
 Response: 4050277
 Conc: 18.42 ng/ml

Instrument :
 ECD_R
 ClientSampleId :



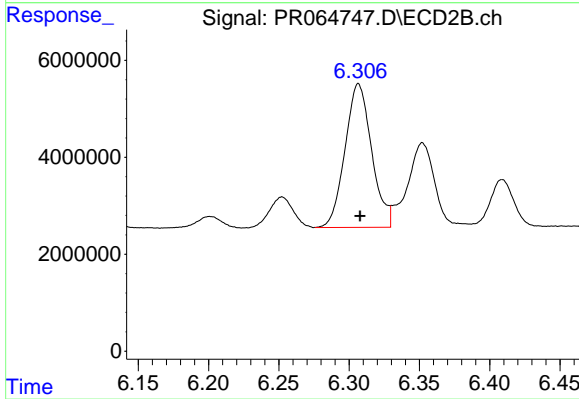
#29 AR-1254-4

R.T.: 5.855 min
 Delta R.T.: 0.000 min
 Response: 2227368
 Conc: 8.92 ng/ml



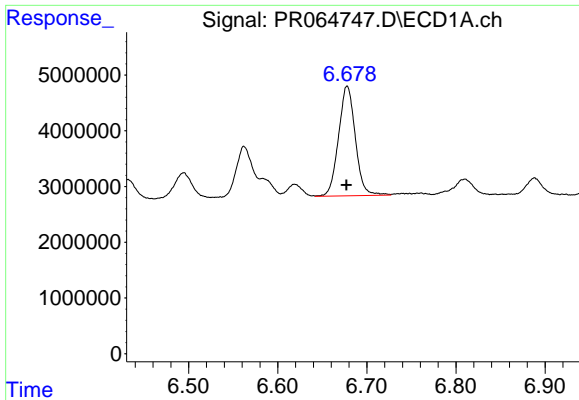
#30 AR-1254-5

R.T.: 7.268 min
 Delta R.T.: 0.000 min
 Response: 33041240
 Conc: 139.12 ng/ml



#30 AR-1254-5

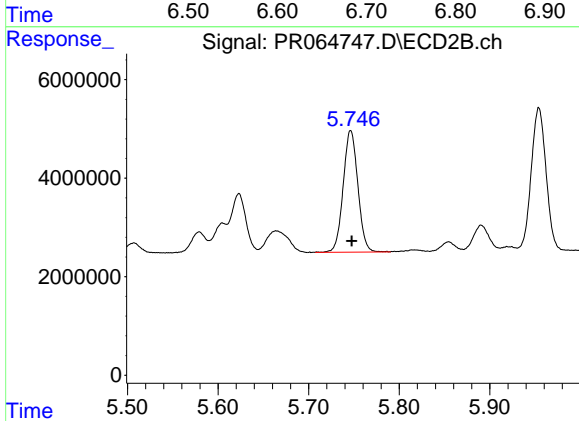
R.T.: 6.307 min
 Delta R.T.: -0.001 min
 Response: 39035040
 Conc: 109.54 ng/ml



#31 AR-1260-1

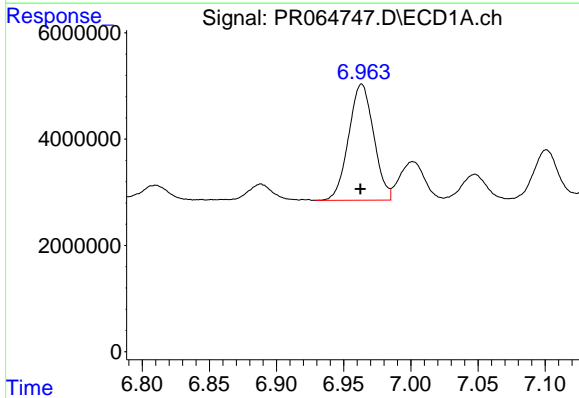
R.T.: 6.678 min
 Delta R.T.: 0.000 min
 Response: 25763782
 Conc: 103.10 ng/ml

Instrument :
 ECD_R
 ClientSampleId :



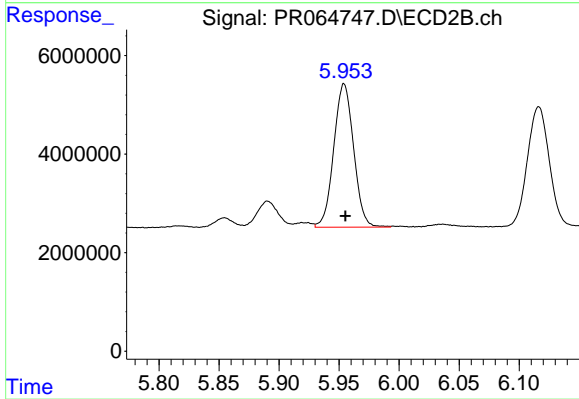
#31 AR-1260-1

R.T.: 5.746 min
 Delta R.T.: 0.000 min
 Response: 27852697
 Conc: 96.38 ng/ml



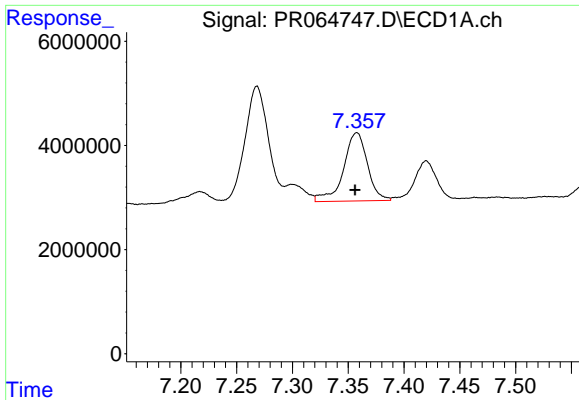
#32 AR-1260-2

R.T.: 6.963 min
 Delta R.T.: 0.000 min
 Response: 28373680
 Conc: 99.26 ng/ml



#32 AR-1260-2

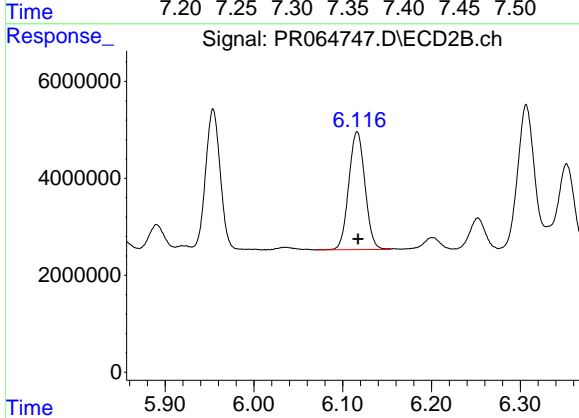
R.T.: 5.954 min
 Delta R.T.: -0.001 min
 Response: 33540202
 Conc: 96.54 ng/ml



#33 AR-1260-3

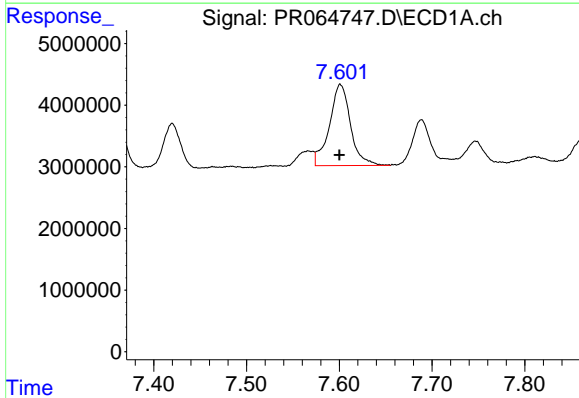
R.T.: 7.358 min
 Delta R.T.: 0.002 min
 Response: 19520561
 Conc: 92.06 ng/ml

Instrument :
 ECD_R
 ClientSampleId :



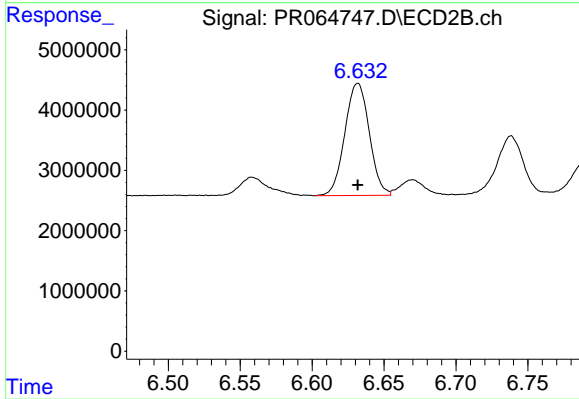
#33 AR-1260-3

R.T.: 6.116 min
 Delta R.T.: 0.000 min
 Response: 30804128
 Conc: 93.59 ng/ml



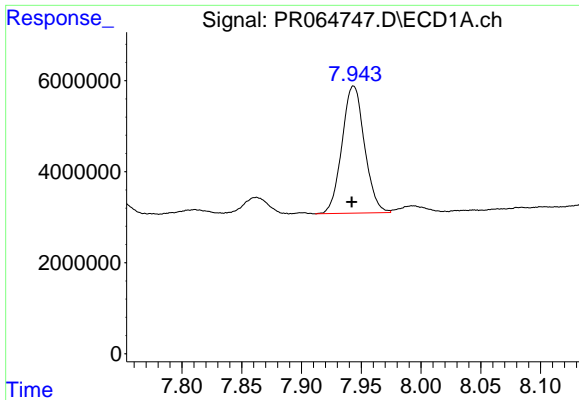
#34 AR-1260-4

R.T.: 7.601 min
 Delta R.T.: 0.001 min
 Response: 20850422
 Conc: 90.71 ng/ml



#34 AR-1260-4

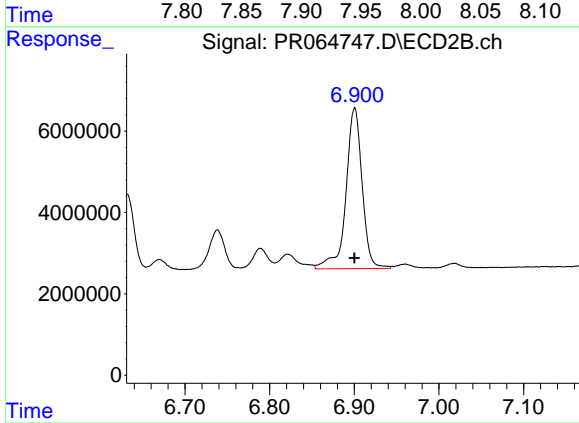
R.T.: 6.632 min
 Delta R.T.: 0.000 min
 Response: 22142386
 Conc: 82.09 ng/ml



#35 AR-1260-5

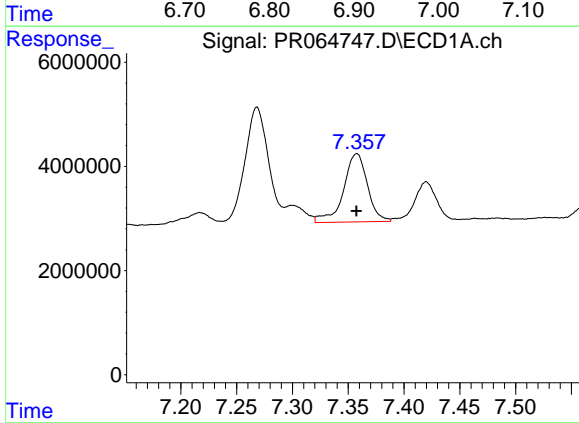
R.T.: 7.944 min
 Delta R.T.: 0.002 min
 Response: 36635937
 Conc: 85.38 ng/ml

Instrument :
 ECD_R
 ClientSampleId :



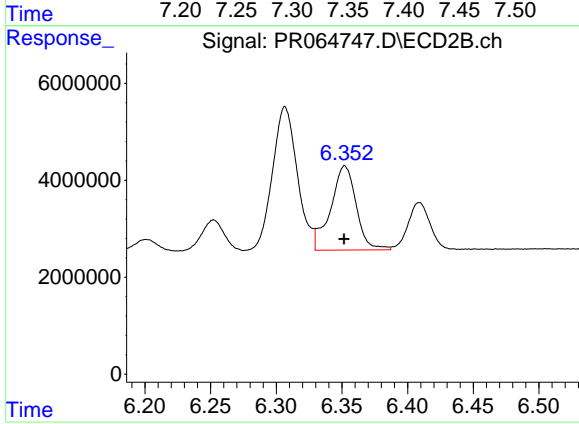
#35 AR-1260-5

R.T.: 6.901 min
 Delta R.T.: 0.000 min
 Response: 52512102
 Conc: 84.03 ng/ml



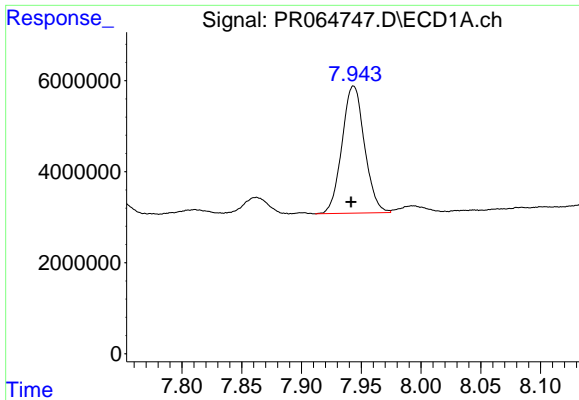
#36 AR-1262-1

R.T.: 7.358 min
 Delta R.T.: 0.000 min
 Response: 19520561
 Conc: 67.88 ng/ml



#36 AR-1262-1

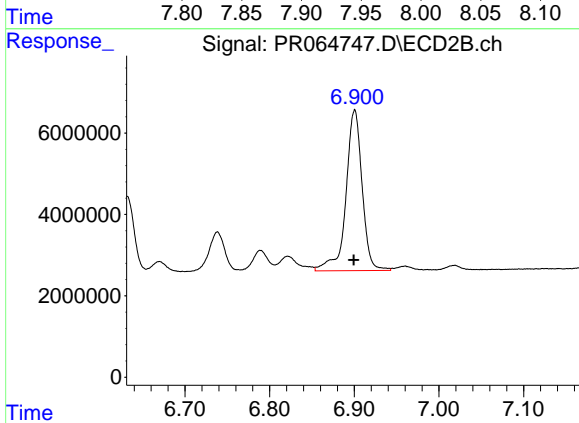
R.T.: 6.352 min
 Delta R.T.: 0.000 min
 Response: 23590825
 Conc: 64.62 ng/ml



#37 AR-1262-2

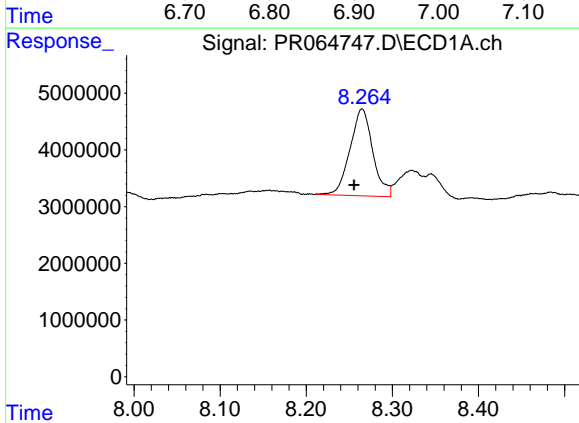
R.T.: 7.944 min
 Delta R.T.: 0.002 min
 Response: 36635937
 Conc: 78.64 ng/ml

Instrument :
 ECD_R
 ClientSampleId :



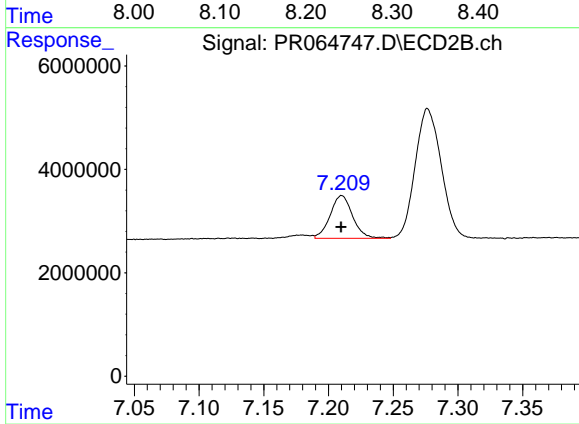
#37 AR-1262-2

R.T.: 6.901 min
 Delta R.T.: 0.001 min
 Response: 52512102
 Conc: 79.59 ng/ml



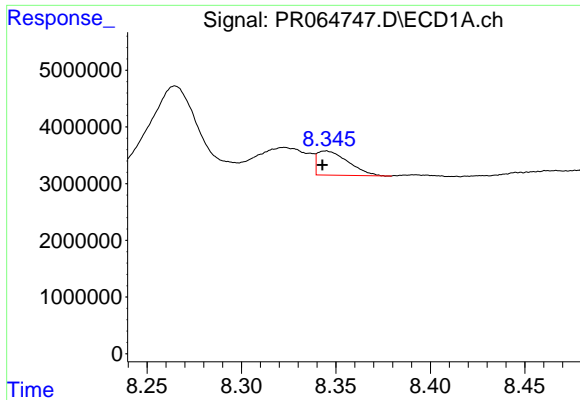
#38 AR-1262-3

R.T.: 8.265 min
 Delta R.T.: 0.009 min
 Response: 28241841
 Conc: 89.58 ng/ml



#38 AR-1262-3

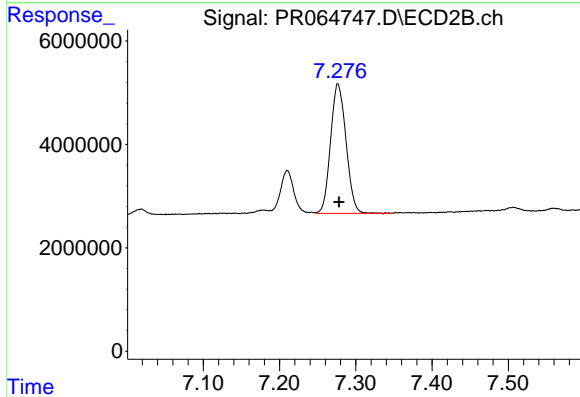
R.T.: 7.210 min
 Delta R.T.: 0.000 min
 Response: 9985578
 Conc: 39.82 ng/ml



#39 AR-1262-4

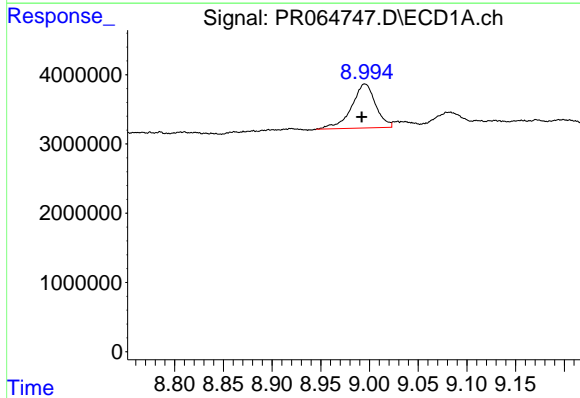
R.T.: 8.345 min
 Delta R.T.: 0.002 min
 Response: 4848915
 Conc: 20.34 ng/ml

Instrument :
 ECD_R
 ClientSampleId :



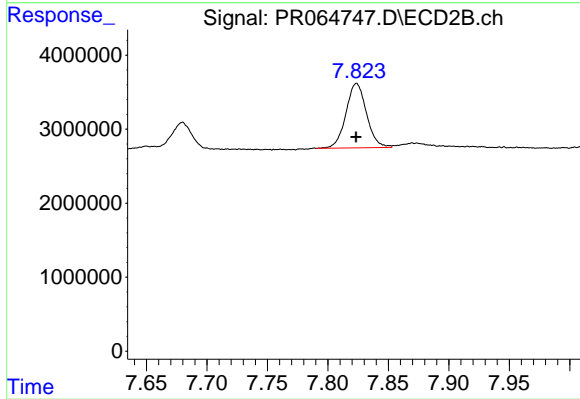
#39 AR-1262-4

R.T.: 7.277 min
 Delta R.T.: -0.002 min
 Response: 35214864
 Conc: 73.78 ng/ml



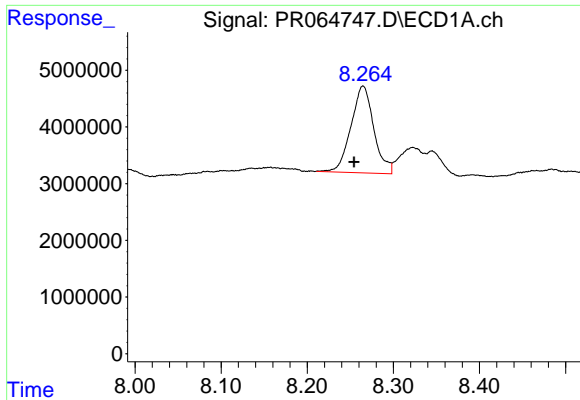
#40 AR-1262-5

R.T.: 8.995 min
 Delta R.T.: 0.003 min
 Response: 10954288
 Conc: 67.40 ng/ml



#40 AR-1262-5

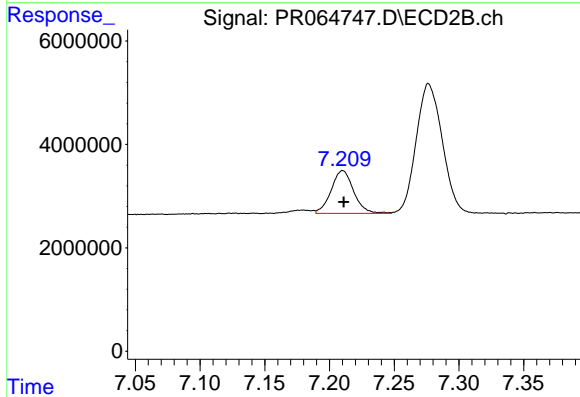
R.T.: 7.824 min
 Delta R.T.: 0.000 min
 Response: 10279058
 Conc: 48.41 ng/ml



#41 AR-1268-1

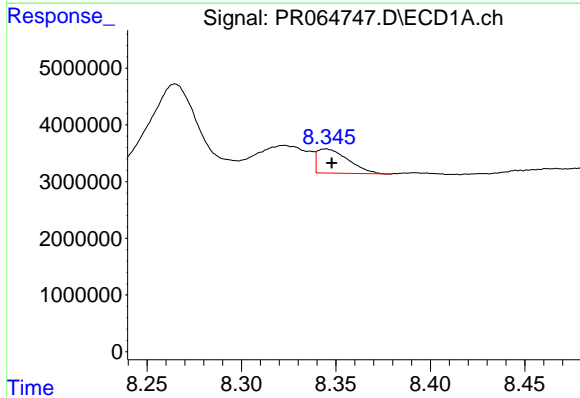
R.T.: 8.265 min
 Delta R.T.: 0.011 min
 Response: 28241841
 Conc: 49.56 ng/ml

Instrument :
 ECD_R
 ClientSampleId :



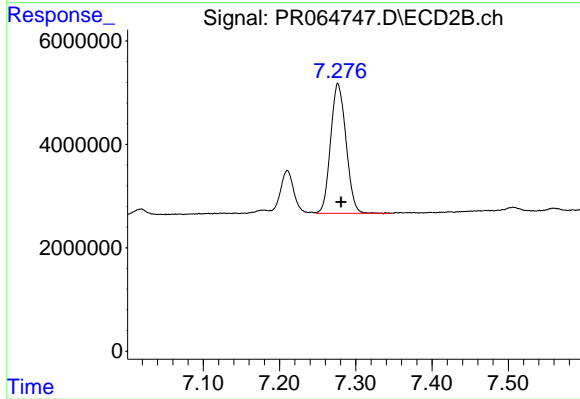
#41 AR-1268-1

R.T.: 7.210 min
 Delta R.T.: 0.000 min
 Response: 9985578
 Conc: 12.77 ng/ml



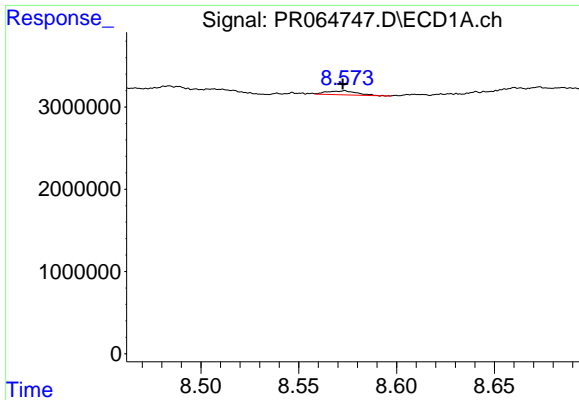
#42 AR-1268-2

R.T.: 8.345 min
 Delta R.T.: -0.003 min
 Response: 4848915
 Conc: 9.58 ng/ml



#42 AR-1268-2

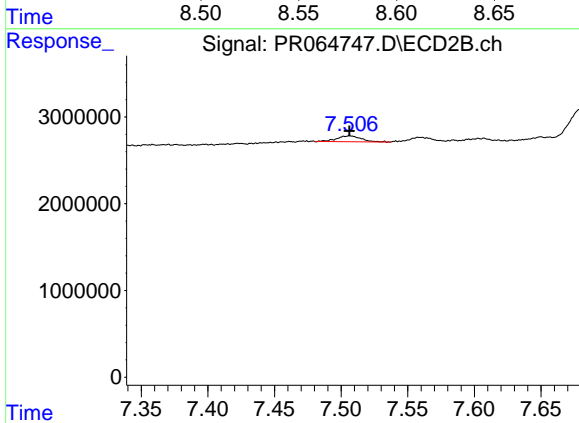
R.T.: 7.277 min
 Delta R.T.: -0.004 min
 Response: 35214864
 Conc: 49.07 ng/ml



#43 AR-1268-3

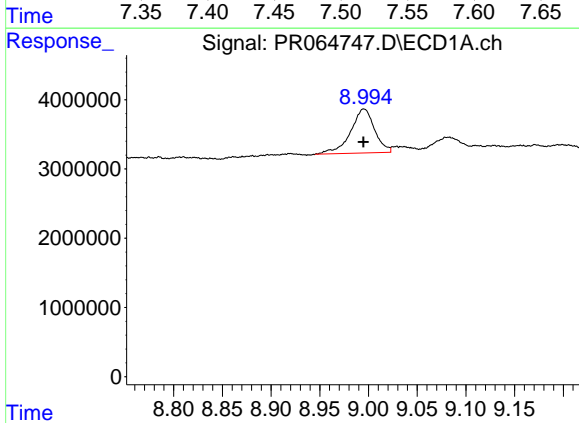
R.T.: 8.573 min
 Delta R.T.: 0.000 min
 Response: 505821
 Conc: 1.14 ng/ml

Instrument :
 ECD_R
 ClientSampleId :



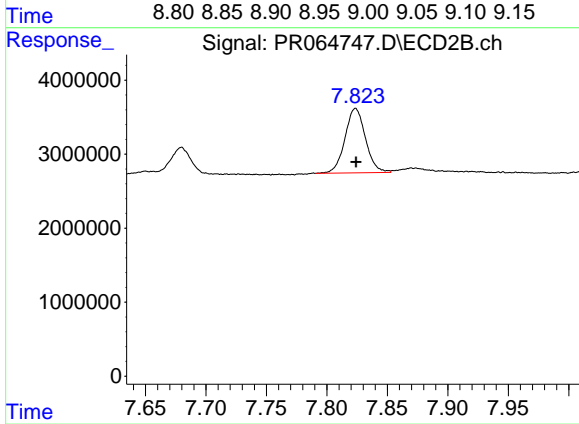
#43 AR-1268-3

R.T.: 7.507 min
 Delta R.T.: 0.000 min
 Response: 860676
 Conc: 1.44 ng/ml



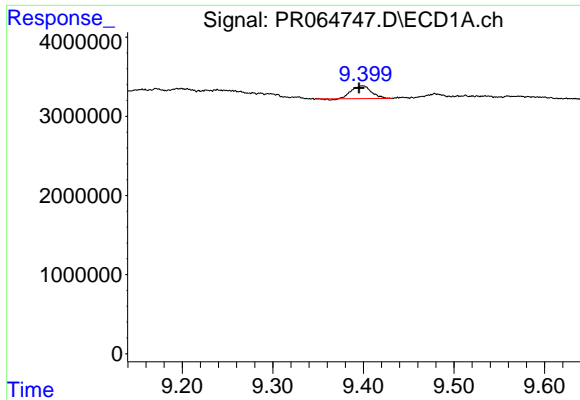
#44 AR-1268-4

R.T.: 8.995 min
 Delta R.T.: 0.000 min
 Response: 10954288
 Conc: 58.95 ng/ml



#44 AR-1268-4

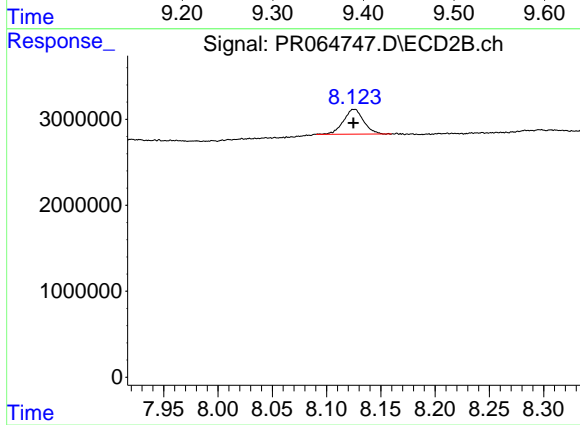
R.T.: 7.824 min
 Delta R.T.: 0.000 min
 Response: 10279058
 Conc: 41.15 ng/ml



#45 AR-1268-5

R.T.: 9.399 min
Delta R.T.: 0.004 min
Response: 2415736
Conc: 1.80 ng/ml

Instrument :
ECD_R
ClientSampleId :



#45 AR-1268-5

R.T.: 8.125 min
Delta R.T.: 0.000 min
Response: 3738278
Conc: 2.08 ng/ml