

Data Path : Z:\pestpcbsrv\HPCHEM1\ECD\_R\Data\PR121820\  
 Data File : PR048980.D  
 Signal(s) : Signal #1: ECD1A.ch Signal #2: ECD2B.ch  
 Acq On : 18 Dec 2020 10:52  
 Operator : DD\AJ  
 Sample : AIBLK72  
 Misc :  
 ALS Vial : 2 Sample Multiplier: 1

Instrument :  
 ECD\_R  
 ClientSampleId :  
 AIBLK72

Integration File signal 1: autoint1.e  
 Integration File signal 2: autoint2.e  
 Quant Time: Dec 19 01:31:01 2020  
 Quant Method : Z:\pestpcbsrv\HPCHEM1\ECD\_R\Method\PR113020CLP.M  
 Quant Title : GC EXTRACTABLES  
 QLast Update : Tue Dec 01 06:11:17 2020  
 Response via : Initial Calibration  
 Integrator: ChemStation

Volume Inj. : 1 µl  
 Signal #1 Phase : ZB MR1 Signal #2 Phase: ZB MR2  
 Signal #1 Info : 30Mx0.32mmx 0.5µm Signal #2 Info : 30M x 0.32mm x 0.25µm

Compound	RT#1	RT#2	Resp#1	Resp#2	ng/ml	ng/ml
----------	------	------	--------	--------	-------	-------

System Monitoring Compounds

1) SA Tetrachlo...	4.692	3.845	48114042	91636805	18.207	21.543
2) SA Decachlor...	10.602	8.927	97500501	367.1E6	37.156	42.828

Target Compounds

3) L1 AR-1016-1	5.870	0.000	66652	0	0.678	N.D. #
4) L1 AR-1016-2	5.899	0.000	318414	0	2.246	N.D. #
5) L1 AR-1016-3	5.946	0.000	79510	0	0.915	N.D. #
6) L1 AR-1016-4	6.063	0.000	40378	0	0.566	N.D. #
7) L1 AR-1016-5	6.351	0.000	37994	0	0.540	N.D. #
8) L2 AR-1221-1	4.898	0.000	35898	0	1.144	N.D. #
9) L2 AR-1221-2	4.993	4.149	219537	1122320	9.822	31.277 #
10) L2 AR-1221-3	5.081	4.149f	25554	1122320	0.350	10.214 #
11) L3 AR-1232-1	5.081	4.149f	25554	1122320	0.423	12.447 #
12) L3 AR-1232-2	5.601	0.000	28117	0	0.905	N.D. #
13) L3 AR-1232-3	5.899	0.000	318414	0	4.950	N.D. #
14) L3 AR-1232-4	6.063	0.000	40378	0	1.264	N.D. #
15) L3 AR-1232-5	6.132	0.000	36471	0	1.474	N.D. #
16) L4 AR-1242-1	5.870	0.000	66652	0	0.811	N.D. #
17) L4 AR-1242-2	5.899	0.000	318414	0	2.770	N.D. #
18) L4 AR-1242-3	5.946	0.000	79510	0	1.118	N.D. #
19) L4 AR-1242-4	6.063	0.000	40378	0	0.693	N.D. #
20) L4 AR-1242-5	6.805	0.000	147897	0	2.240	N.D. #
21) L5 AR-1248-1	5.870	0.000	66652	0	1.103	N.D. #
22) L5 AR-1248-2	6.132	0.000	36471	0	0.430	N.D. #
23) L5 AR-1248-3	6.351	0.000	37994	0	0.412	N.D. #
24) L5 AR-1248-4	6.757	0.000	136208	0	1.247	N.D. #
25) L5 AR-1248-5	6.805	0.000	147897	0	1.406	N.D. #
26) L6 AR-1254-1	6.719	0.000	47237	0	0.431	N.D. #
27) L6 AR-1254-2	6.941	5.938f	55345	577283	0.332	4.677 #
28) L6 AR-1254-3	7.301	0.000	28197	0	0.161	N.D. #
29) L6 AR-1254-4	7.582	0.000	47308	0	0.350	N.D. #
30) L6 AR-1254-5	8.020	0.000	753773	0	5.260	N.D. #
31) L7 AR-1260-1	7.479	0.000	41567	0	0.343	N.D. #
32) L7 AR-1260-2	7.726	6.593	494014	1047403	3.289	2.263 #
33) L7 AR-1260-3	8.096	6.767	842835	209698	7.311	0.746 #
34) L7 AR-1260-4	8.316	0.000	1066795	0	8.043	N.D. #
35) L7 AR-1260-5	8.674	7.496	431836	1597394	1.618	1.128 #
36) L8 AR-1262-1	8.096	0.000	842835	0	5.019	N.D. #
37) L8 AR-1262-2	8.666	7.496	104076	1597394	0.342	1.044 #
38) L8 AR-1262-3	8.992	7.779	101900	806751	0.478	1.262 #
39) L8 AR-1262-4	9.081	7.836	183681	569598	1.113	0.538 #
40) L8 AR-1262-5	9.822	0.000	679449	0	5.548	N.D. #
41) L9 AR-1268-1	8.992	7.779	101900	806751	0.275	0.413 #
42) L9 AR-1268-2	9.081	7.836	183681	569598	0.530	0.333 #

Data Path : Z:\pestpcbsrv\HPCHEM1\ECD\_R\Data\PR121820\  
 Data File : PR048980.D  
 Signal(s) : Signal #1: ECD1A.ch Signal #2: ECD2B.ch  
 Acq On : 18 Dec 2020 10:52  
 Operator : DD\AJ  
 Sample : AIBLK72  
 Misc :  
 ALS Vial : 2 Sample Multiplier: 1

Instrument :  
 ECD\_R  
 ClientSampleId :  
 AIBLK72

Integration File signal 1: autoint1.e  
 Integration File signal 2: autoint2.e  
 Quant Time: Dec 19 01:31:01 2020  
 Quant Method : Z:\pestpcbsrv\HPCHEM1\ECD\_R\Method\PR113020CLP.M  
 Quant Title : GC EXTRACTABLES  
 QLast Update : Tue Dec 01 06:11:17 2020  
 Response via : Initial Calibration  
 Integrator: ChemStation

Volume Inj. : 1 µl  
 Signal #1 Phase : ZB MR1 Signal #2 Phase: ZB MR2  
 Signal #1 Info : 30Mx0.32mmx 0.5µm Signal #2 Info : 30M x 0.32mm x 0.25µm

	Compound	RT#1	RT#2	Resp#1	Resp#2	ng/ml	ng/ml
43)	L9 AR-1268-3	9.348	8.029	626342	150687	2.096	0.102 #
44)	L9 AR-1268-4	9.822	0.000	679449	0	5.003	N.D. #
45)	L9 AR-1268-5	10.243	8.659	1449538	11790997	1.433	2.975 #

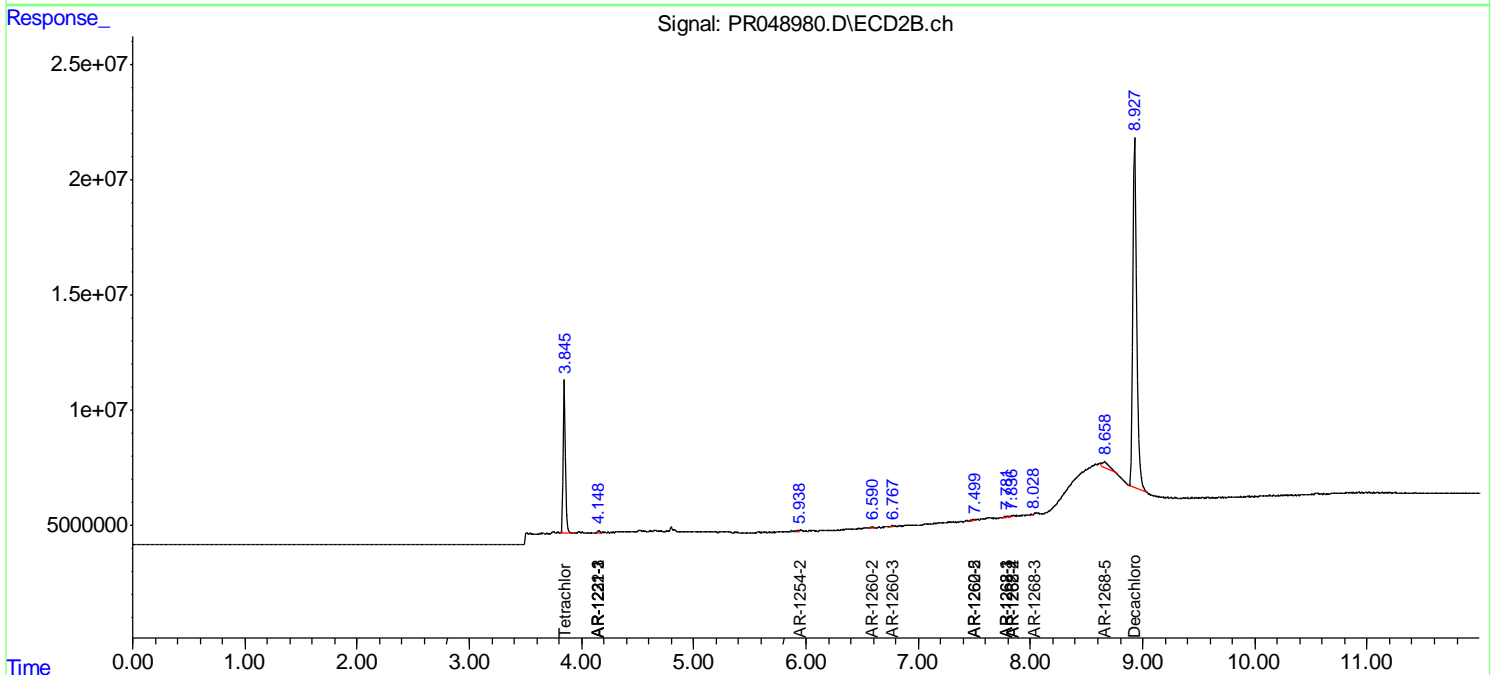
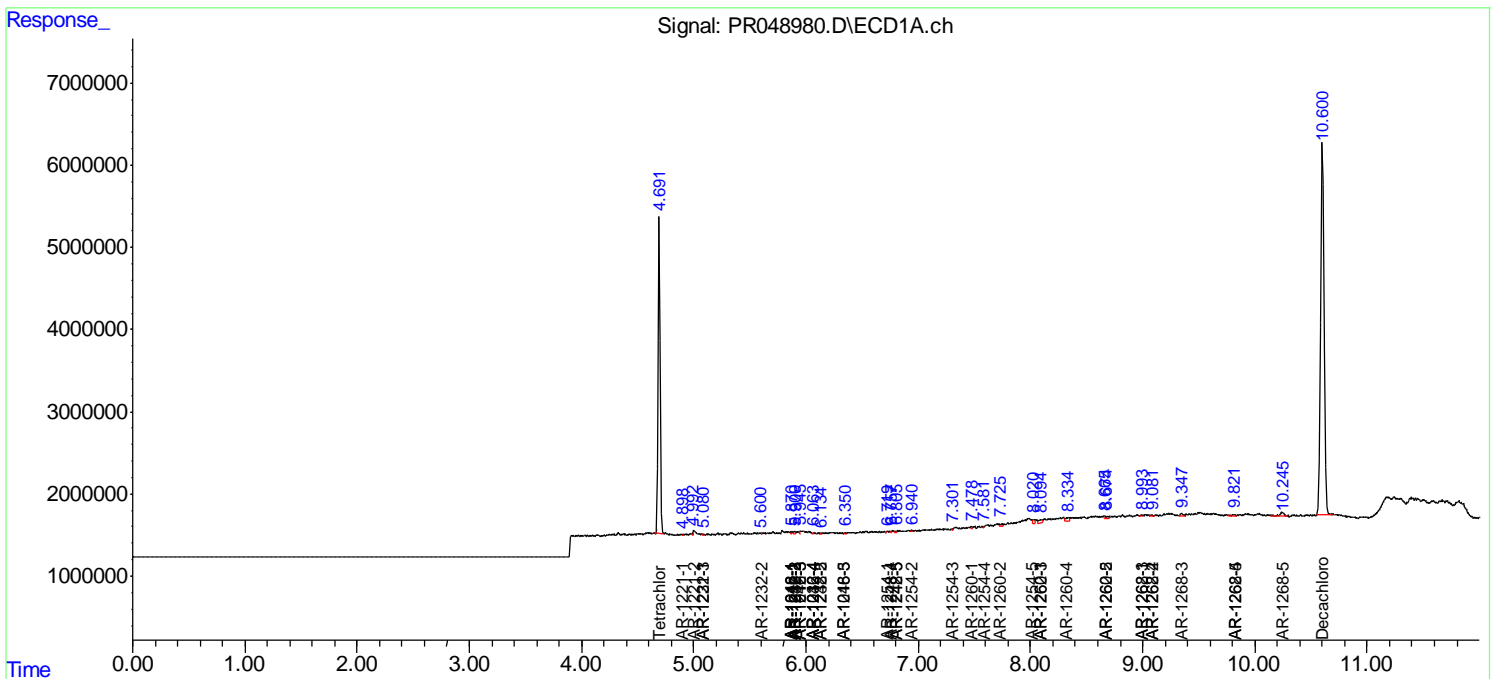
(f)=RT Delta > 1/2 Window (#)=Amounts differ by > 25% (m)=manual int.

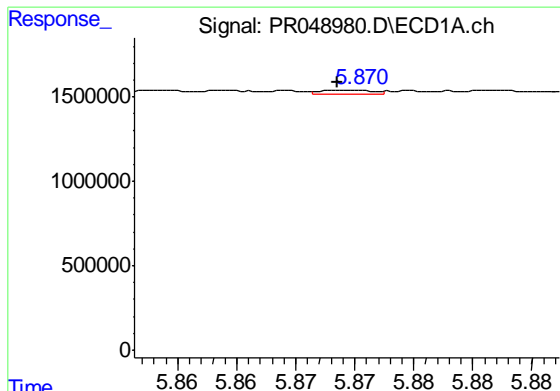
Data Path : Z:\pestpcbsrv\HPCHEM1\ECD\_R\Data\PR121820\  
 Data File : PR048980.D  
 Signal(s) : Signal #1: ECD1A.ch Signal #2: ECD2B.ch  
 Acq On : 18 Dec 2020 10:52  
 Operator : DD\AJ  
 Sample : AIBLK72  
 Misc :  
 ALS Vial : 2 Sample Multiplier: 1

Instrument :  
 ECD\_R  
 ClientSampled :  
 AIBLK72

Integration File signal 1: autoint1.e  
 Integration File signal 2: autoint2.e  
 Quant Time: Dec 19 01:31:01 2020  
 Quant Method : Z:\pestpcbsrv\HPCHEM1\ECD\_R\Method\PR113020CLP.M  
 Quant Title : GC EXTRACTABLES  
 QLast Update : Tue Dec 01 06:11:17 2020  
 Response via : Initial Calibration  
 Integrator: ChemStation

Volume Inj. : 1 µl  
 Signal #1 Phase : ZB MR1 Signal #2 Phase: ZB MR2  
 Signal #1 Info : 30Mx0.32mmx 0.5µm Signal #2 Info : 30M x 0.32mm x 0.25µm

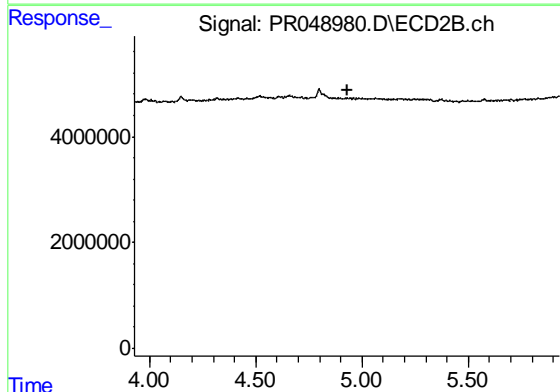




#3 AR-1016-1

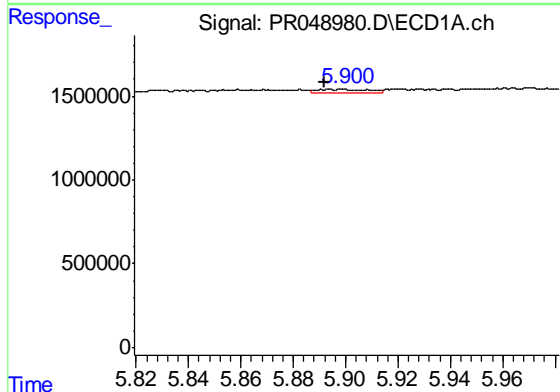
R.T.: 5.870 min  
 Delta R.T.: 0.001 min  
 Response: 66652  
 Conc: 0.68 ng/ml

Instrument :  
 ECD\_R  
 ClientSampleId :  
 AIBLK72



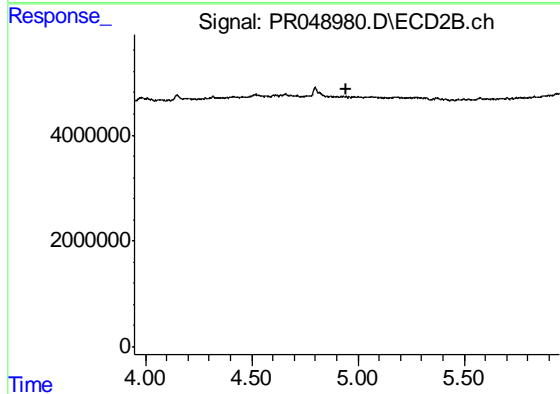
#3 AR-1016-1

R.T.: 0.000 min  
 Exp R.T. : 4.929 min  
 Response: 0  
 Conc: N.D.



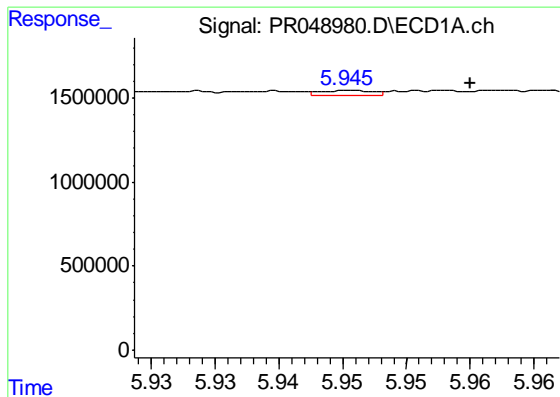
#4 AR-1016-2

R.T.: 5.899 min  
 Delta R.T.: 0.007 min  
 Response: 318414  
 Conc: 2.25 ng/ml



#4 AR-1016-2

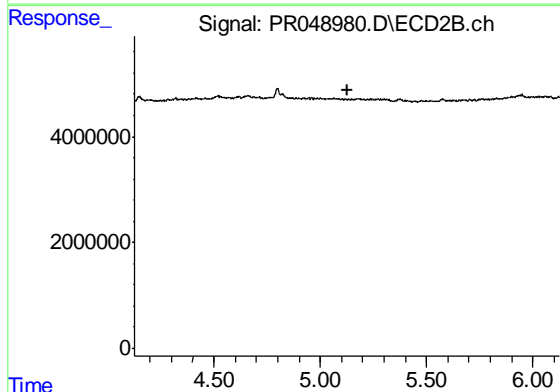
R.T.: 0.000 min  
 Exp R.T. : 4.948 min  
 Response: 0  
 Conc: N.D.



#5 AR-1016-3

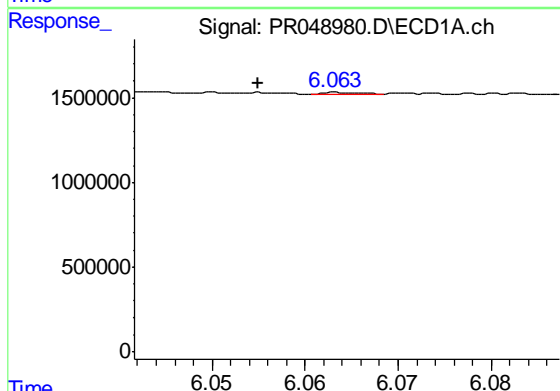
R.T.: 5.946 min  
 Delta R.T.: -0.009 min  
 Response: 79510  
 Conc: 0.91 ng/ml

Instrument :  
 ECD\_R  
 ClientSampleId :  
 AIBLK72



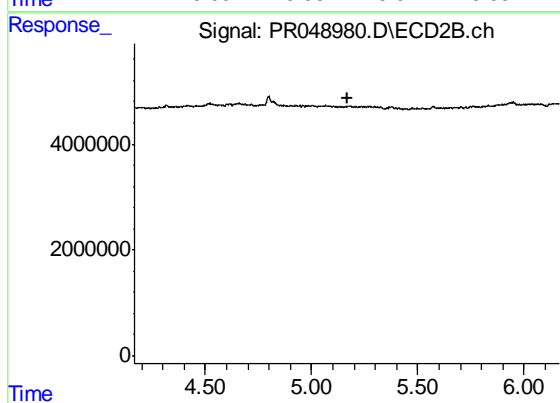
#5 AR-1016-3

R.T.: 0.000 min  
 Exp R.T. : 5.126 min  
 Response: 0  
 Conc: N.D.



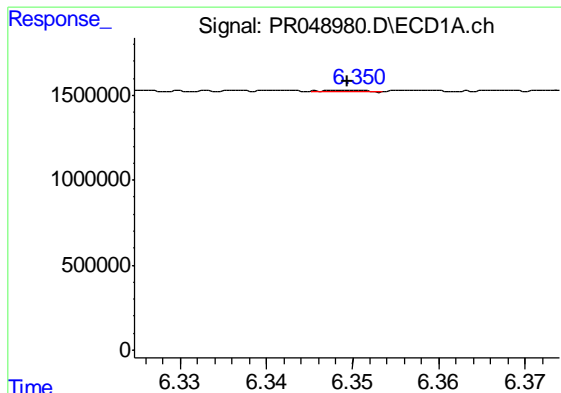
#6 AR-1016-4

R.T.: 6.063 min  
 Delta R.T.: 0.009 min  
 Response: 40378  
 Conc: 0.57 ng/ml



#6 AR-1016-4

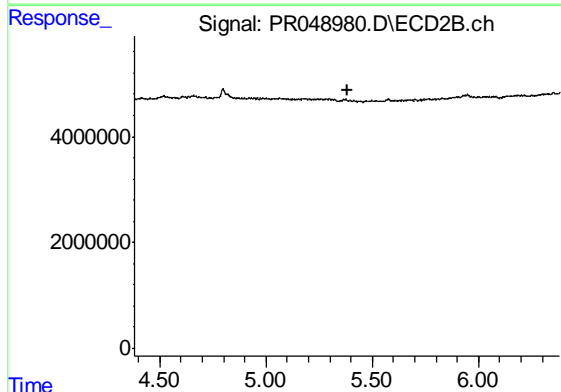
R.T.: 0.000 min  
 Exp R.T. : 5.166 min  
 Response: 0  
 Conc: N.D.



#7 AR-1016-5

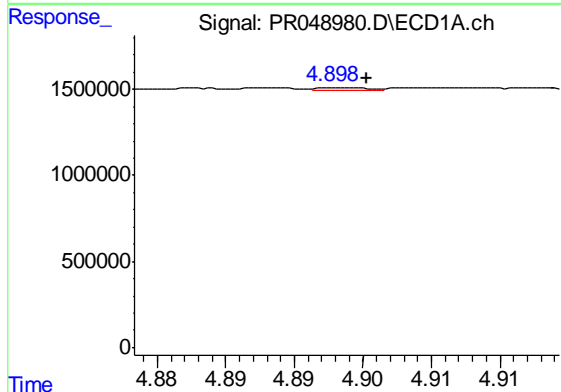
R.T.: 6.351 min  
 Delta R.T.: 0.001 min  
 Response: 37994  
 Conc: 0.54 ng/ml

Instrument :  
 ECD\_R  
 ClientSampleId :  
 AIBLK72



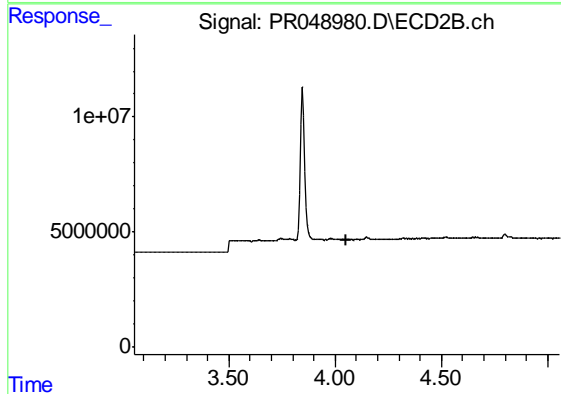
#7 AR-1016-5

R.T.: 0.000 min  
 Exp R.T. : 5.381 min  
 Response: 0  
 Conc: N.D.



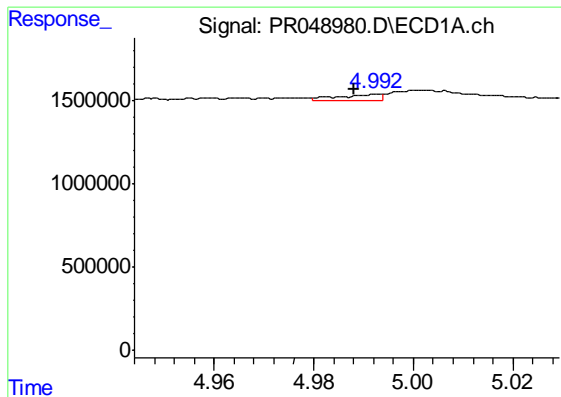
#8 AR-1221-1

R.T.: 4.898 min  
 Delta R.T.: -0.002 min  
 Response: 35898  
 Conc: 1.14 ng/ml



#8 AR-1221-1

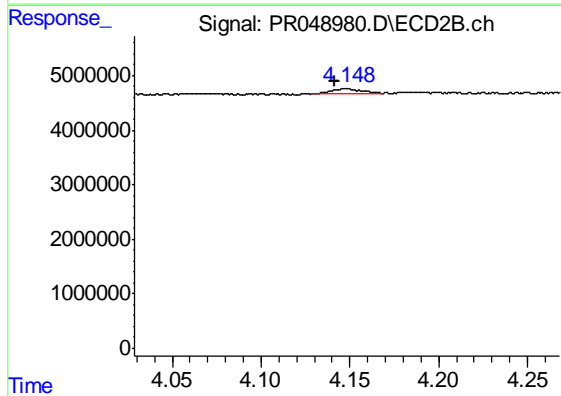
R.T.: 0.000 min  
 Exp R.T. : 4.055 min  
 Response: 0  
 Conc: N.D.



#9 AR-1221-2

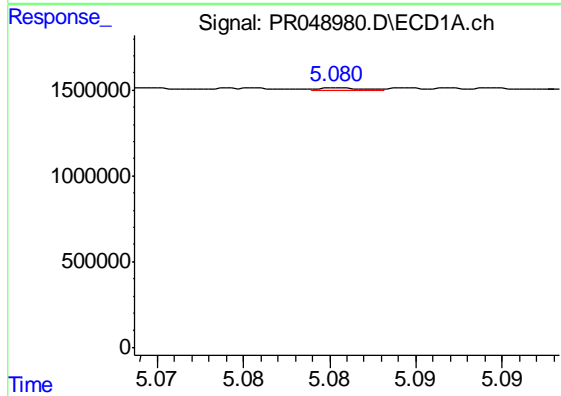
R.T.: 4.993 min  
 Delta R.T.: 0.005 min  
 Response: 219537  
 Conc: 9.82 ng/ml

Instrument :  
 ECD\_R  
 ClientSampleId :  
 AIBLK72



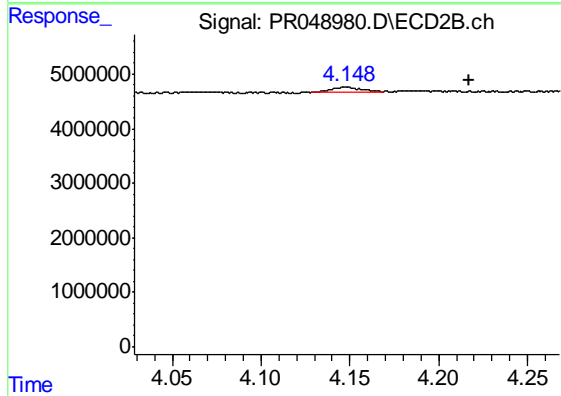
#9 AR-1221-2

R.T.: 4.149 min  
 Delta R.T.: 0.007 min  
 Response: 1122320  
 Conc: 31.28 ng/ml



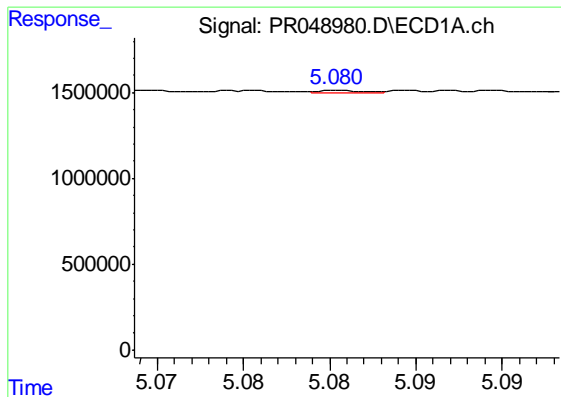
#10 AR-1221-3

R.T.: 5.081 min  
 Delta R.T.: 0.015 min  
 Response: 25554  
 Conc: 0.35 ng/ml



#10 AR-1221-3

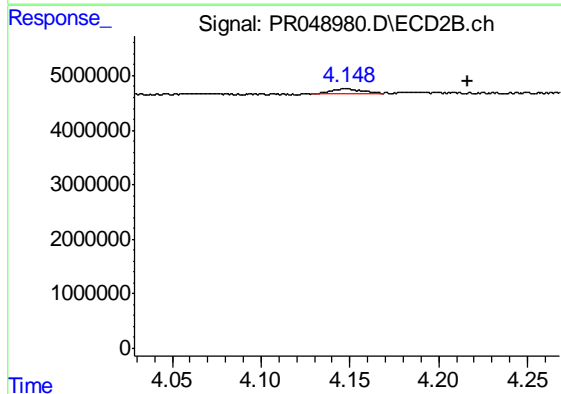
R.T.: 4.149 min  
 Delta R.T.: -0.068 min  
 Response: 1122320  
 Conc: 10.21 ng/ml



#11 AR-1232-1

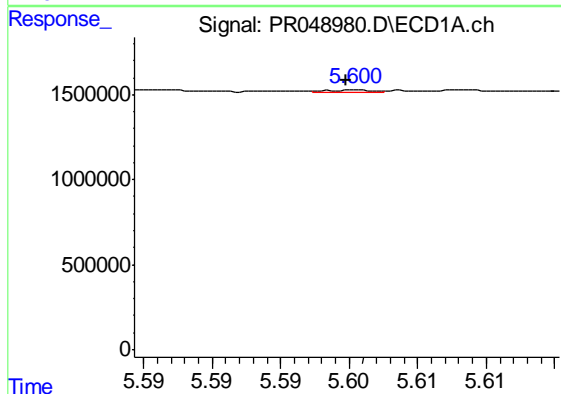
R.T.: 5.081 min  
 Delta R.T.: 0.015 min  
 Response: 25554  
 Conc: 0.42 ng/ml

Instrument :  
 ECD\_R  
 ClientSampleId :  
 AIBLK72



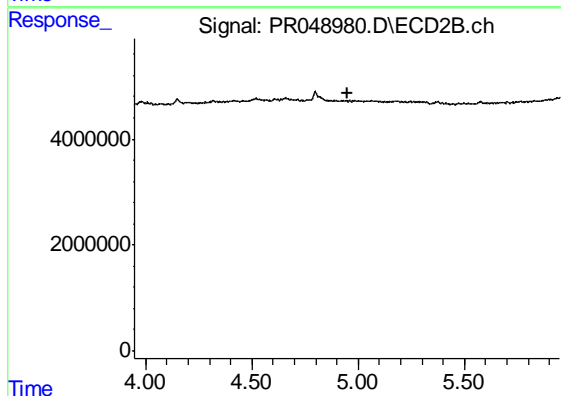
#11 AR-1232-1

R.T.: 4.149 min  
 Delta R.T.: -0.068 min  
 Response: 1122320  
 Conc: 12.45 ng/ml



#12 AR-1232-2

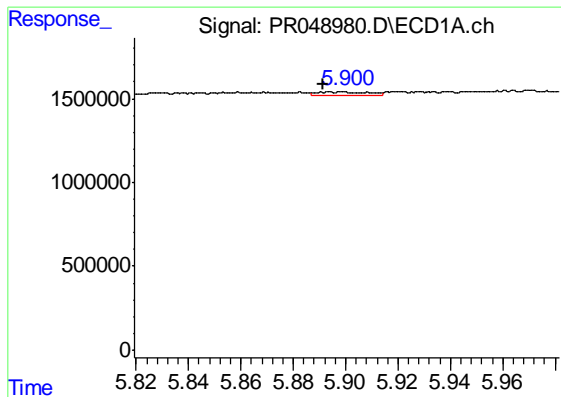
R.T.: 5.601 min  
 Delta R.T.: 0.000 min  
 Response: 28117  
 Conc: 0.90 ng/ml



#12 AR-1232-2

R.T.: 0.000 min  
 Exp R.T. : 4.947 min  
 Response: 0  
 Conc: N.D.

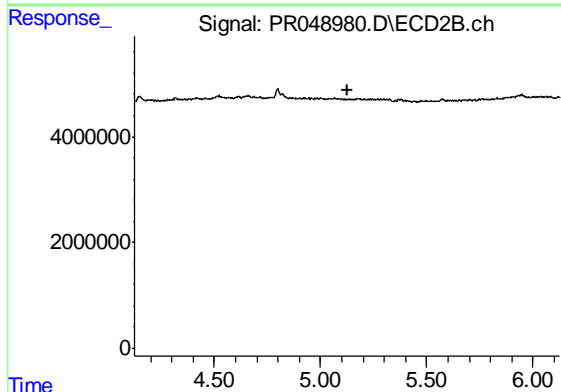




#13 AR-1232-3

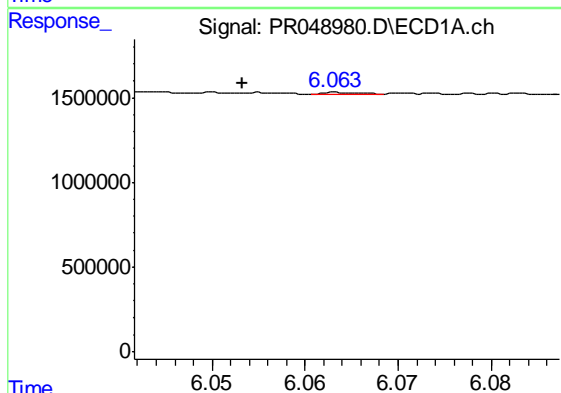
R.T.: 5.899 min  
 Delta R.T.: 0.008 min  
 Response: 318414  
 Conc: 4.95 ng/ml

Instrument :  
 ECD\_R  
 ClientSampleId :  
 AIBLK72



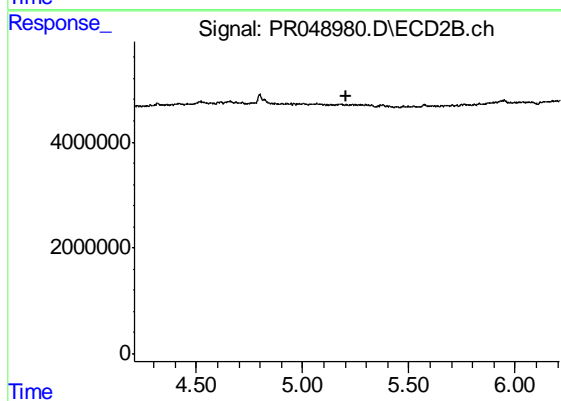
#13 AR-1232-3

R.T.: 0.000 min  
 Exp R.T. : 5.125 min  
 Response: 0  
 Conc: N.D.



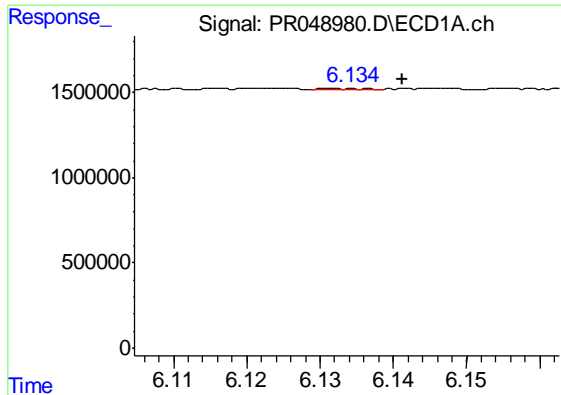
#14 AR-1232-4

R.T.: 6.063 min  
 Delta R.T.: 0.010 min  
 Response: 40378  
 Conc: 1.26 ng/ml



#14 AR-1232-4

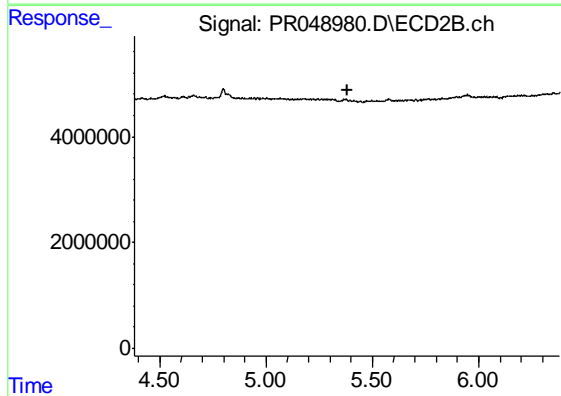
R.T.: 0.000 min  
 Exp R.T. : 5.208 min  
 Response: 0  
 Conc: N.D.



#15 AR-1232-5

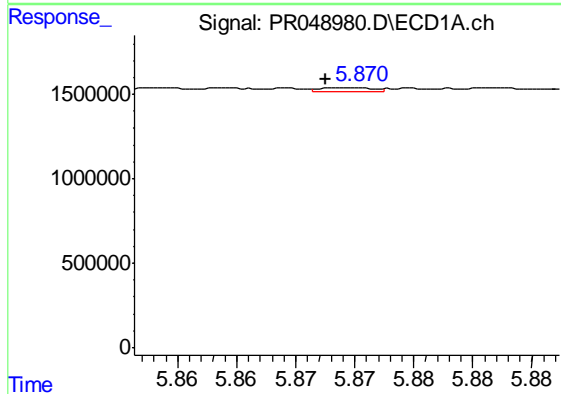
R.T.: 6.132 min  
 Delta R.T.: -0.010 min  
 Response: 36471  
 Conc: 1.47 ng/ml

Instrument :  
 ECD\_R  
 ClientSampled :  
 AIBLK72



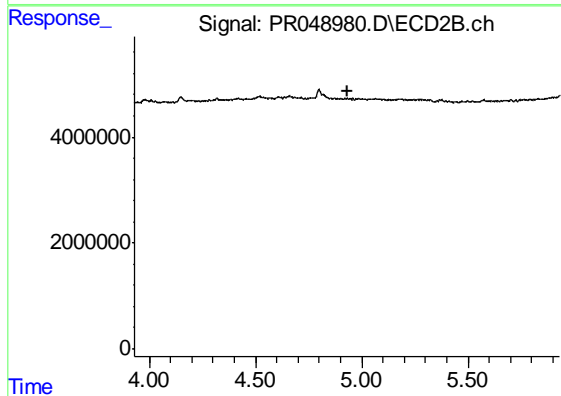
#15 AR-1232-5

R.T.: 0.000 min  
 Exp R.T. : 5.380 min  
 Response: 0  
 Conc: N.D.



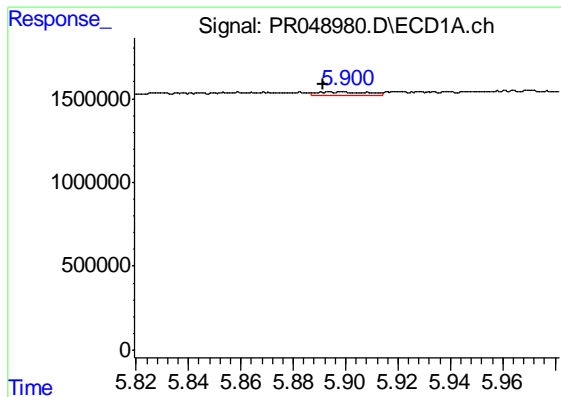
#16 AR-1242-1

R.T.: 5.870 min  
 Delta R.T.: 0.002 min  
 Response: 66652  
 Conc: 0.81 ng/ml



#16 AR-1242-1

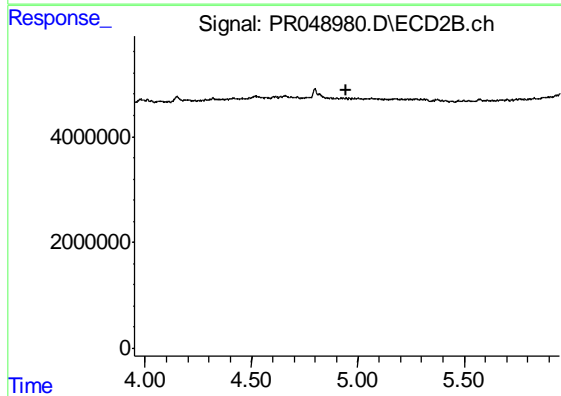
R.T.: 0.000 min  
 Exp R.T. : 4.930 min  
 Response: 0  
 Conc: N.D.



#17 AR-1242-2

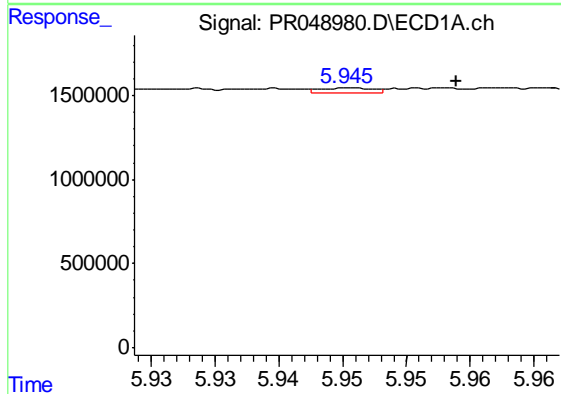
R.T.: 5.899 min  
 Delta R.T.: 0.008 min  
 Response: 318414  
 Conc: 2.77 ng/ml

Instrument :  
 ECD\_R  
 ClientSampleId :  
 AIBLK72



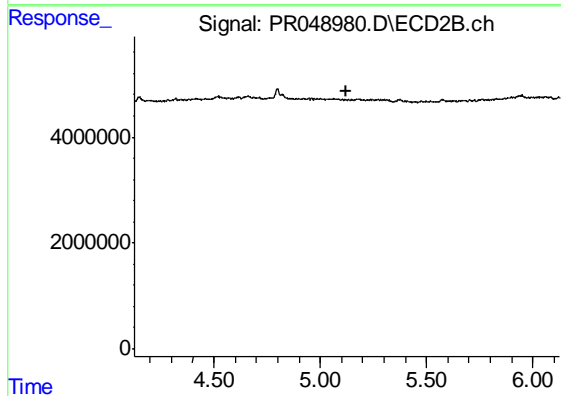
#17 AR-1242-2

R.T.: 0.000 min  
 Exp R.T. : 4.949 min  
 Response: 0  
 Conc: N.D.



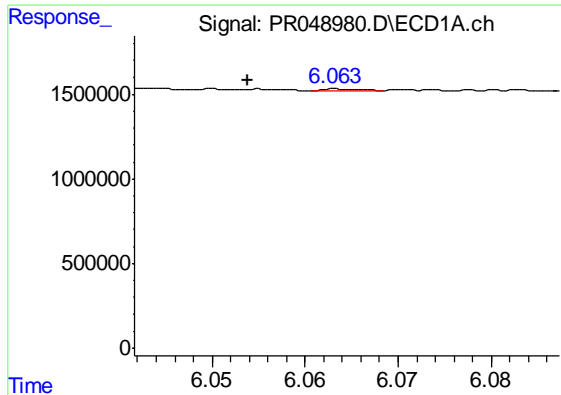
#18 AR-1242-3

R.T.: 5.946 min  
 Delta R.T.: -0.008 min  
 Response: 79510  
 Conc: 1.12 ng/ml



#18 AR-1242-3

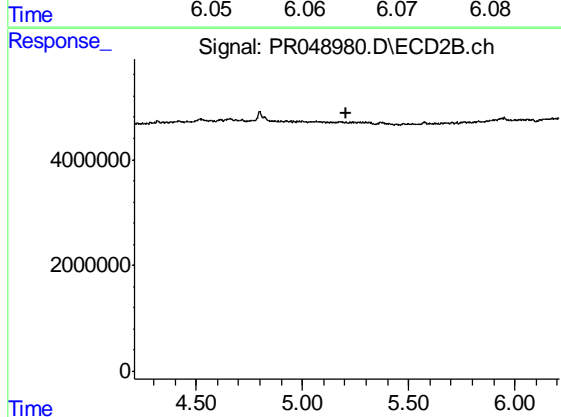
R.T.: 0.000 min  
 Exp R.T. : 5.126 min  
 Response: 0  
 Conc: N.D.



#19 AR-1242-4

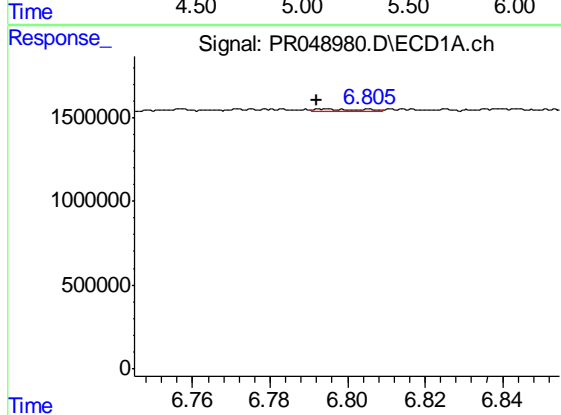
R.T.: 6.063 min  
 Delta R.T.: 0.010 min  
 Response: 40378  
 Conc: 0.69 ng/ml

Instrument :  
 ECD\_R  
 ClientSampleId :  
 AIBLK72



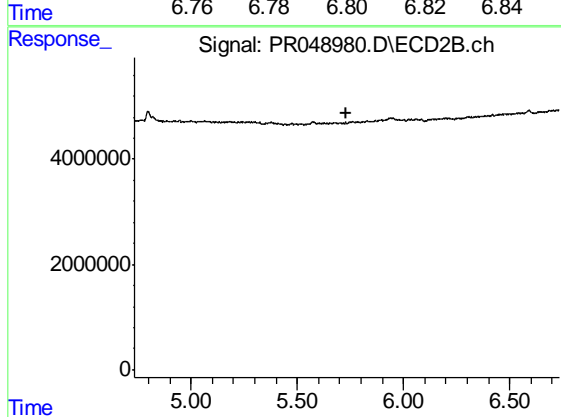
#19 AR-1242-4

R.T.: 0.000 min  
 Exp R.T. : 5.209 min  
 Response: 0  
 Conc: N.D.



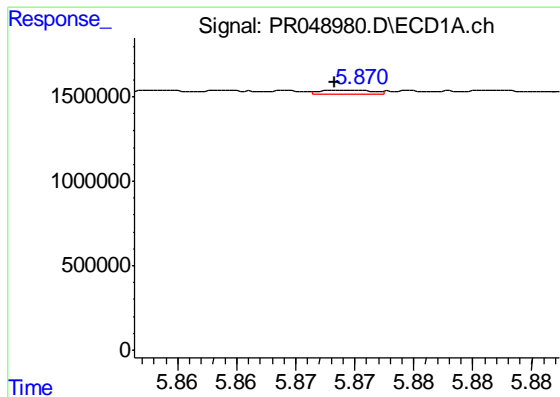
#20 AR-1242-5

R.T.: 6.805 min  
 Delta R.T.: 0.013 min  
 Response: 147897  
 Conc: 2.24 ng/ml



#20 AR-1242-5

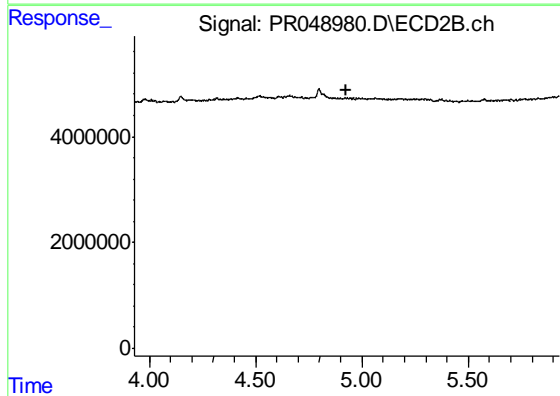
R.T.: 0.000 min  
 Exp R.T. : 5.734 min  
 Response: 0  
 Conc: N.D.



#21 AR-1248-1

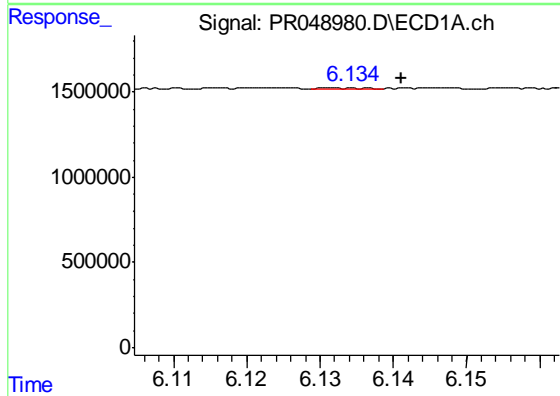
R.T.: 5.870 min  
 Delta R.T.: 0.001 min  
 Response: 66652  
 Conc: 1.10 ng/ml

Instrument :  
 ECD\_R  
 ClientSampleId :  
 AIBLK72



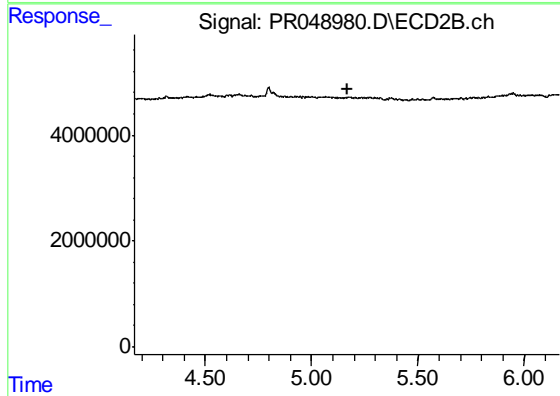
#21 AR-1248-1

R.T.: 0.000 min  
 Exp R.T. : 4.929 min  
 Response: 0  
 Conc: N.D.



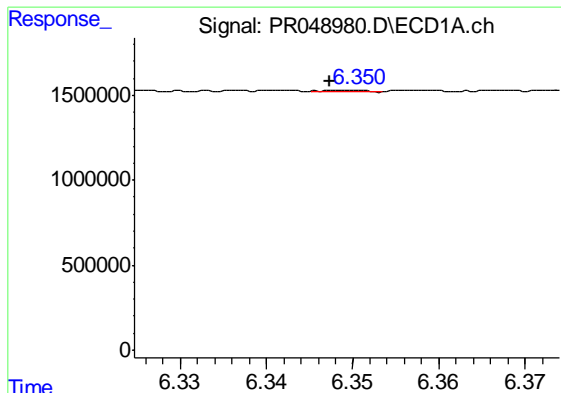
#22 AR-1248-2

R.T.: 6.132 min  
 Delta R.T.: -0.010 min  
 Response: 36471  
 Conc: 0.43 ng/ml



#22 AR-1248-2

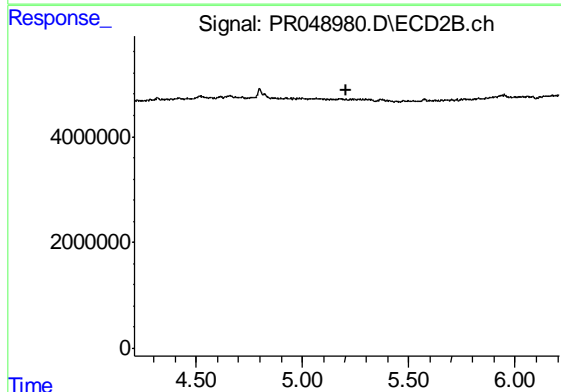
R.T.: 0.000 min  
 Exp R.T. : 5.166 min  
 Response: 0  
 Conc: N.D.



#23 AR-1248-3

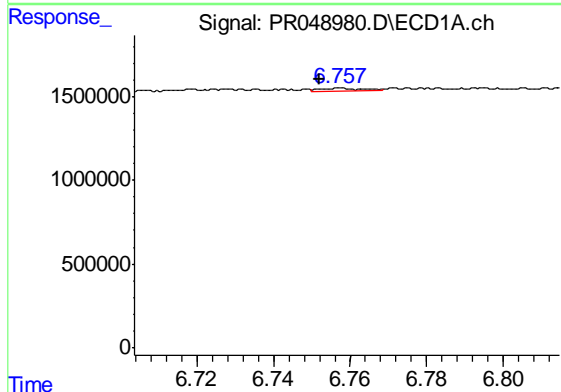
R.T.: 6.351 min  
 Delta R.T.: 0.003 min  
 Response: 37994  
 Conc: 0.41 ng/ml

Instrument :  
 ECD\_R  
 ClientSampleId :  
 AIBLK72



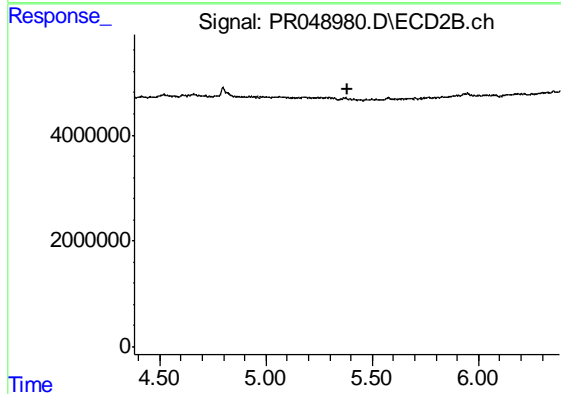
#23 AR-1248-3

R.T.: 0.000 min  
 Exp R.T. : 5.209 min  
 Response: 0  
 Conc: N.D.



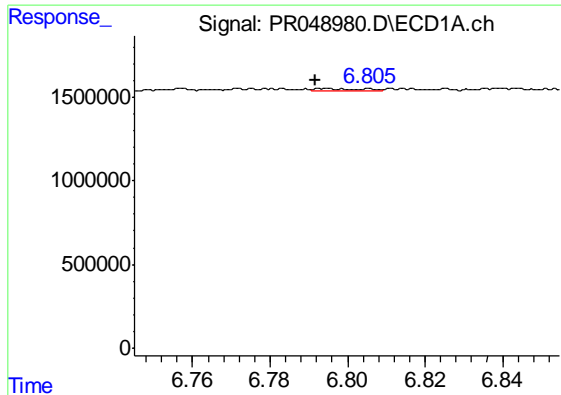
#24 AR-1248-4

R.T.: 6.757 min  
 Delta R.T.: 0.005 min  
 Response: 136208  
 Conc: 1.25 ng/ml



#24 AR-1248-4

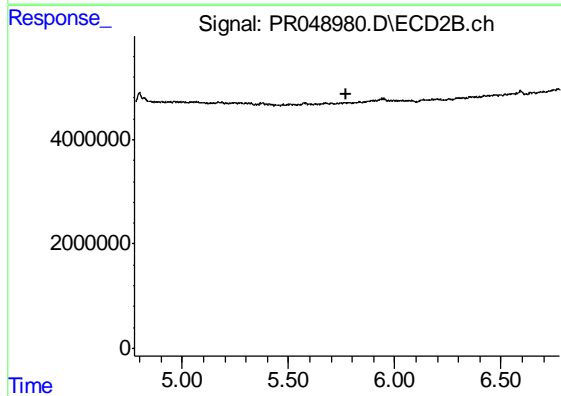
R.T.: 0.000 min  
 Exp R.T. : 5.381 min  
 Response: 0  
 Conc: N.D.



#25 AR-1248-5

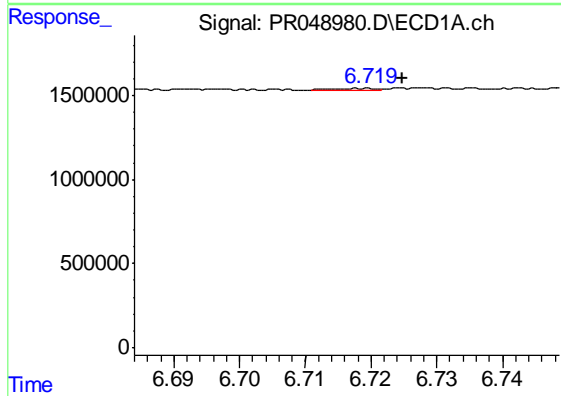
R.T.: 6.805 min  
 Delta R.T.: 0.014 min  
 Response: 147897  
 Conc: 1.41 ng/ml

Instrument :  
 ECD\_R  
 ClientSampleId :  
 AIBLK72



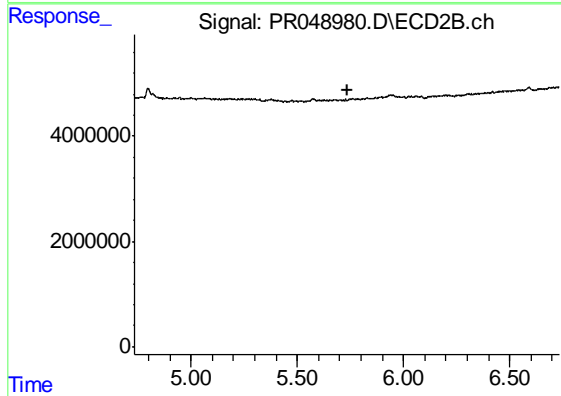
#25 AR-1248-5

R.T.: 0.000 min  
 Exp R.T. : 5.774 min  
 Response: 0  
 Conc: N.D.



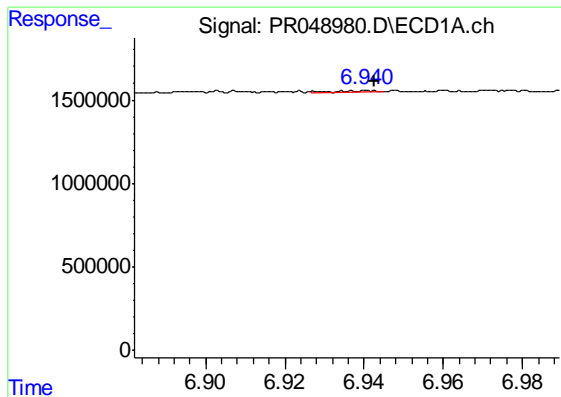
#26 AR-1254-1

R.T.: 6.719 min  
 Delta R.T.: -0.006 min  
 Response: 47237  
 Conc: 0.43 ng/ml



#26 AR-1254-1

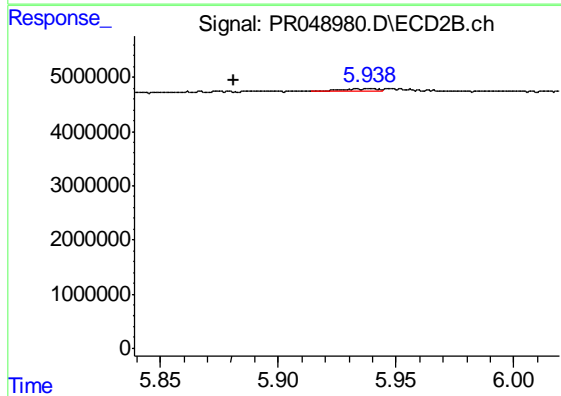
R.T.: 0.000 min  
 Exp R.T. : 5.734 min  
 Response: 0  
 Conc: N.D.



#27 AR-1254-2

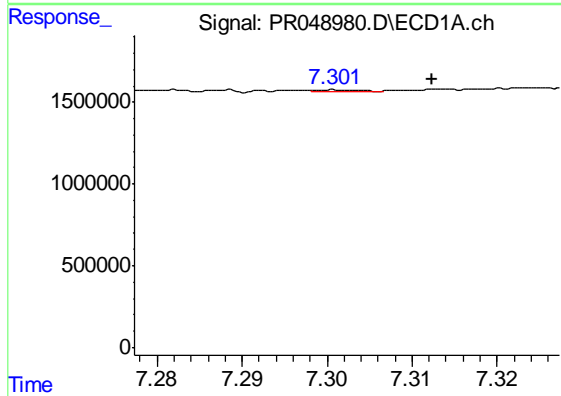
R.T.: 6.941 min  
 Delta R.T.: -0.002 min  
 Response: 55345  
 Conc: 0.33 ng/ml

Instrument :  
 ECD\_R  
 ClientSampled :  
 AIBLK72



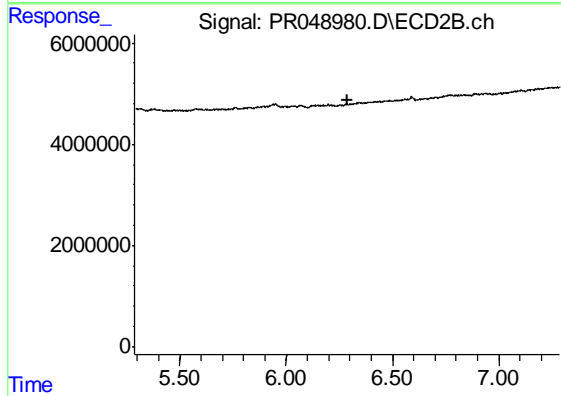
#27 AR-1254-2

R.T.: 5.938 min  
 Delta R.T.: 0.057 min  
 Response: 577283  
 Conc: 4.68 ng/ml



#28 AR-1254-3

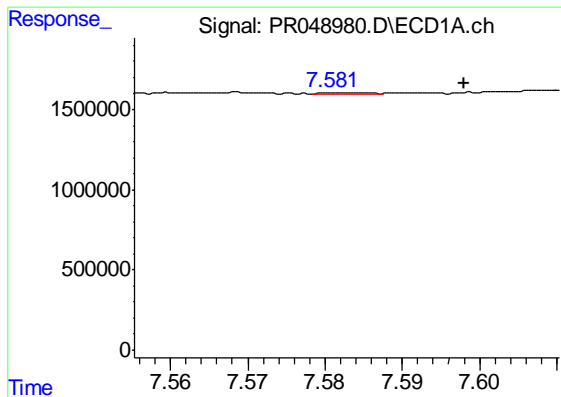
R.T.: 7.301 min  
 Delta R.T.: -0.012 min  
 Response: 28197  
 Conc: 0.16 ng/ml



#28 AR-1254-3

R.T.: 0.000 min  
 Exp R.T. : 6.286 min  
 Response: 0  
 Conc: N.D.

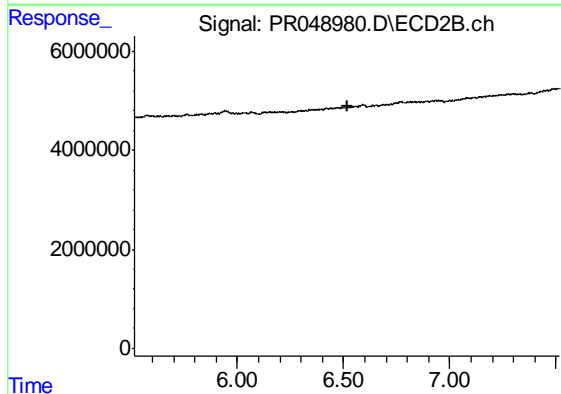




#29 AR-1254-4

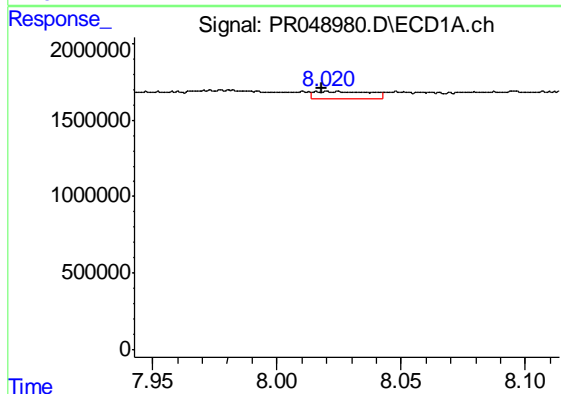
R.T.: 7.582 min  
 Delta R.T.: -0.016 min  
 Response: 47308  
 Conc: 0.35 ng/ml

Instrument :  
 ECD\_R  
 ClientSampleId :  
 AIBLK72



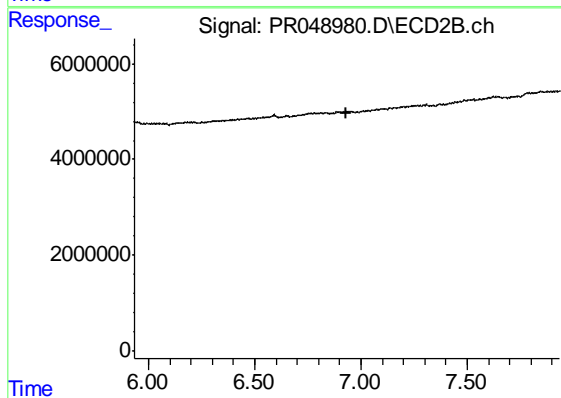
#29 AR-1254-4

R.T.: 0.000 min  
 Exp R.T. : 6.516 min  
 Response: 0  
 Conc: N.D.



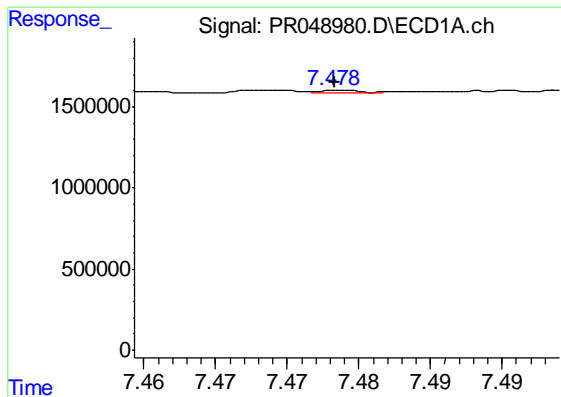
#30 AR-1254-5

R.T.: 8.020 min  
 Delta R.T.: 0.002 min  
 Response: 753773  
 Conc: 5.26 ng/ml



#30 AR-1254-5

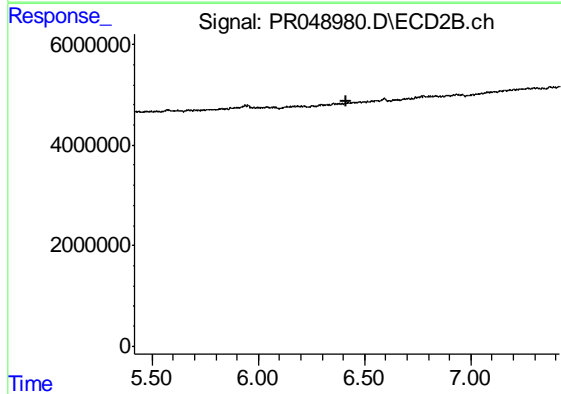
R.T.: 0.000 min  
 Exp R.T. : 6.934 min  
 Response: 0  
 Conc: N.D.



#31 AR-1260-1

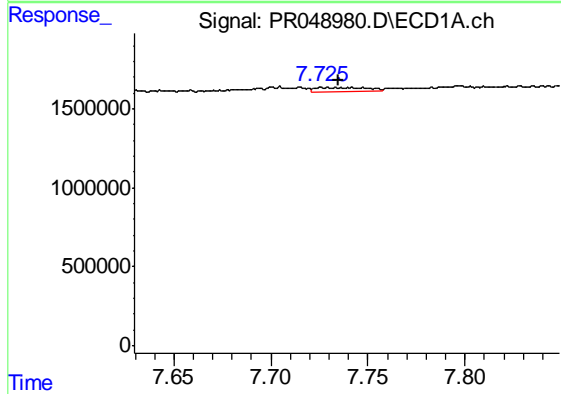
R.T.: 7.479 min  
 Delta R.T.: 0.000 min  
 Response: 41567  
 Conc: 0.34 ng/ml

Instrument :  
 ECD\_R  
 ClientSampleId :  
 AIBLK72



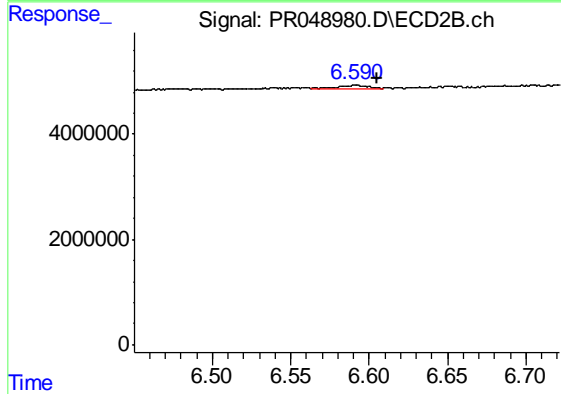
#31 AR-1260-1

R.T.: 0.000 min  
 Exp R.T. : 6.417 min  
 Response: 0  
 Conc: N.D.



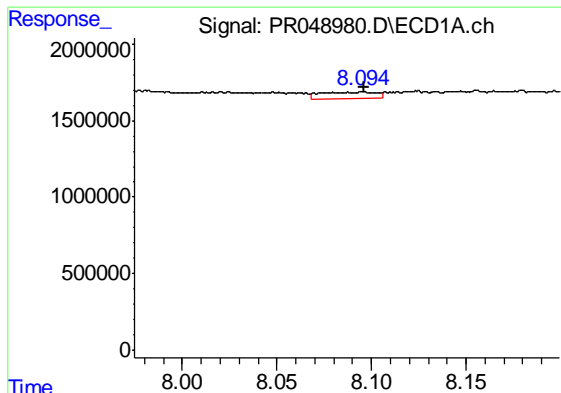
#32 AR-1260-2

R.T.: 7.726 min  
 Delta R.T.: -0.009 min  
 Response: 494014  
 Conc: 3.29 ng/ml



#32 AR-1260-2

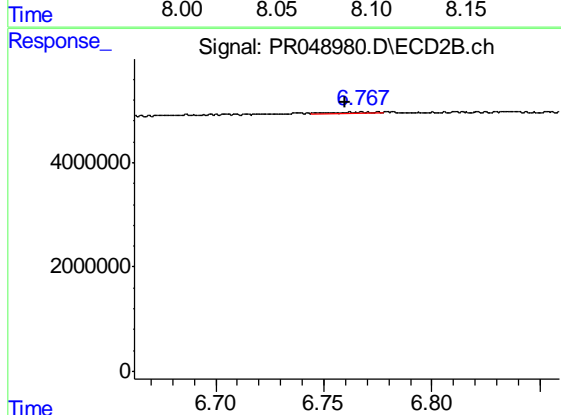
R.T.: 6.593 min  
 Delta R.T.: -0.012 min  
 Response: 1047403  
 Conc: 2.26 ng/ml



#33 AR-1260-3

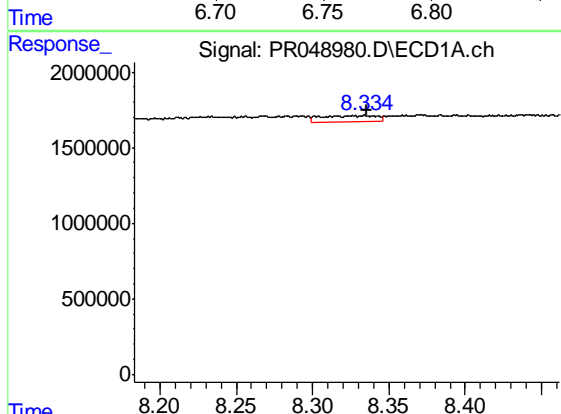
R.T.: 8.096 min  
 Delta R.T.: 0.000 min  
 Response: 842835  
 Conc: 7.31 ng/ml

Instrument :  
 ECD\_R  
 ClientSampleId :  
 AIBLK72



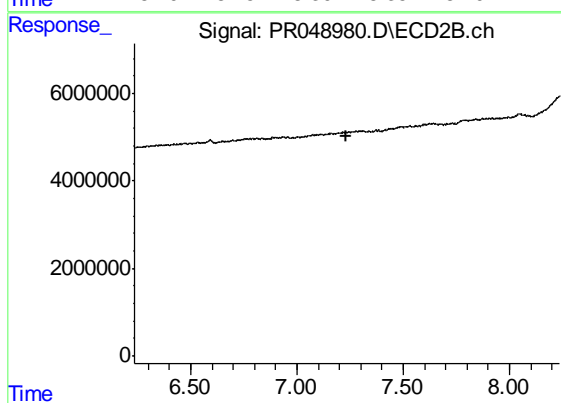
#33 AR-1260-3

R.T.: 6.767 min  
 Delta R.T.: 0.007 min  
 Response: 209698  
 Conc: 0.75 ng/ml



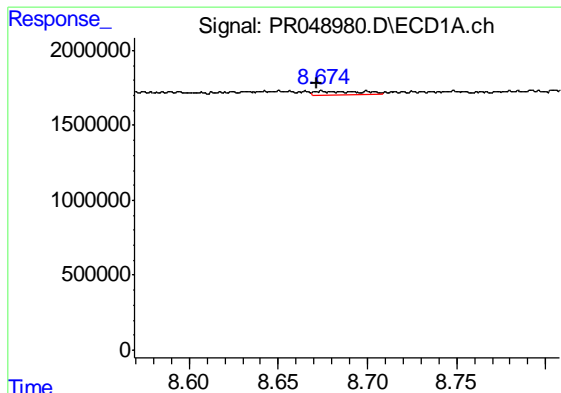
#34 AR-1260-4

R.T.: 8.316 min  
 Delta R.T.: -0.019 min  
 Response: 1066795  
 Conc: 8.04 ng/ml



#34 AR-1260-4

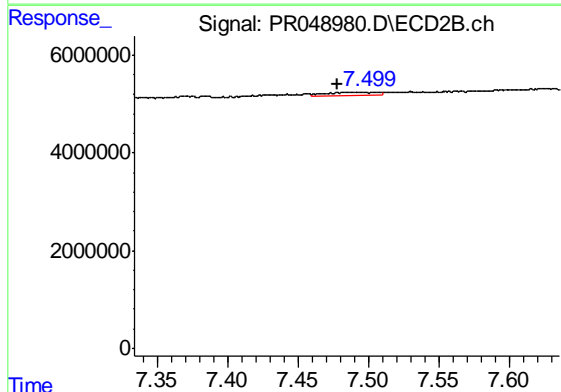
R.T.: 0.000 min  
 Exp R.T. : 7.235 min  
 Response: 0  
 Conc: N.D.



#35 AR-1260-5

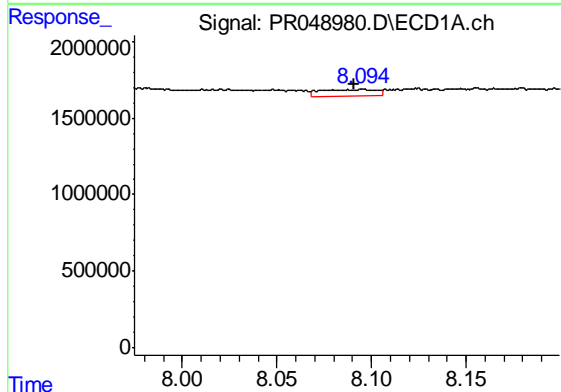
R.T.: 8.674 min  
 Delta R.T.: 0.002 min  
 Response: 431836  
 Conc: 1.62 ng/ml

Instrument :  
 ECD\_R  
 ClientSampleId :  
 AIBLK72



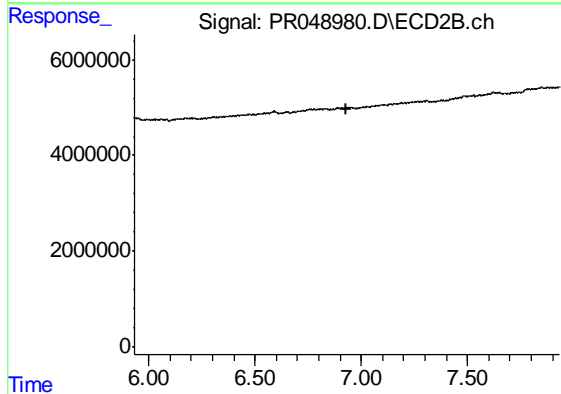
#35 AR-1260-5

R.T.: 7.496 min  
 Delta R.T.: 0.018 min  
 Response: 1597394  
 Conc: 1.13 ng/ml



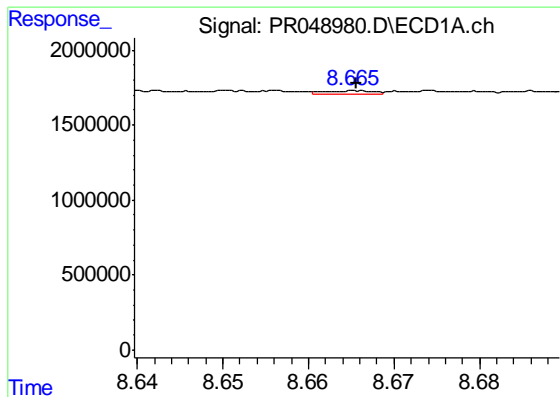
#36 AR-1262-1

R.T.: 8.096 min  
 Delta R.T.: 0.005 min  
 Response: 842835  
 Conc: 5.02 ng/ml



#36 AR-1262-1

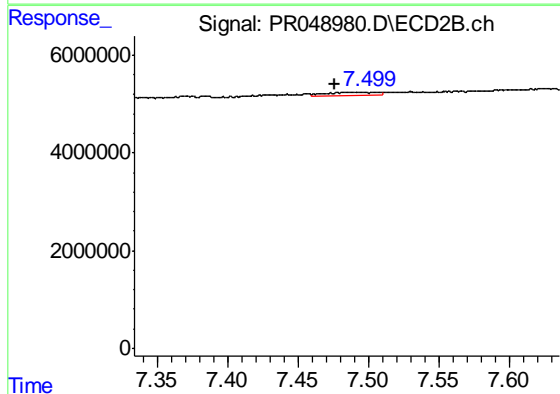
R.T.: 0.000 min  
 Exp R.T. : 6.933 min  
 Response: 0  
 Conc: N.D.



#37 AR-1262-2

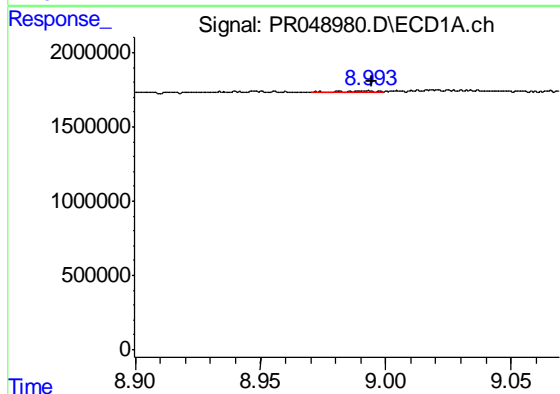
R.T.: 8.666 min  
 Delta R.T.: 0.000 min  
 Response: 104076  
 Conc: 0.34 ng/ml

Instrument :  
 ECD\_R  
 ClientSampleId :  
 AIBLK72



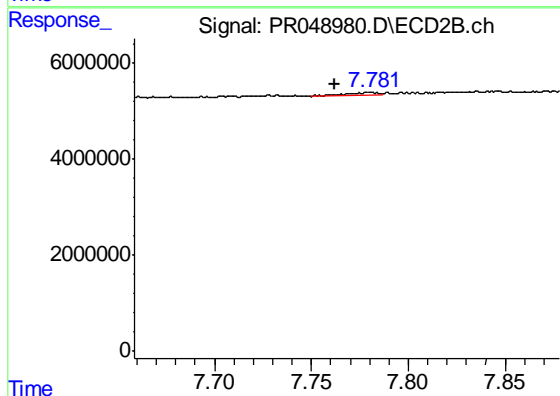
#37 AR-1262-2

R.T.: 7.496 min  
 Delta R.T.: 0.020 min  
 Response: 1597394  
 Conc: 1.04 ng/ml



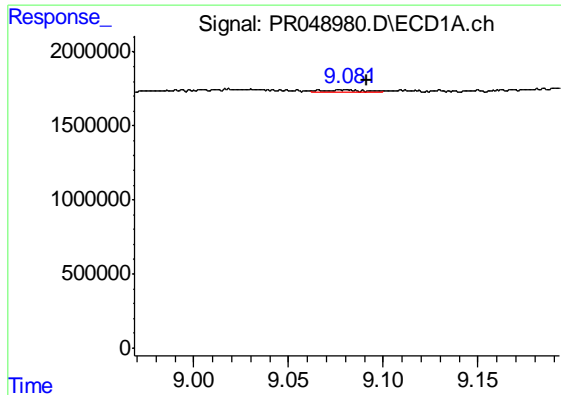
#38 AR-1262-3

R.T.: 8.992 min  
 Delta R.T.: -0.003 min  
 Response: 101900  
 Conc: 0.48 ng/ml



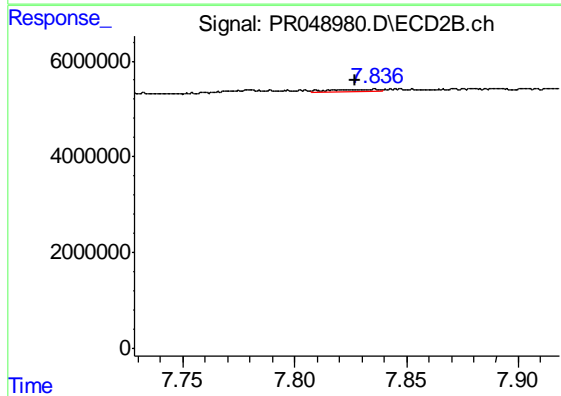
#38 AR-1262-3

R.T.: 7.779 min  
 Delta R.T.: 0.017 min  
 Response: 806751  
 Conc: 1.26 ng/ml

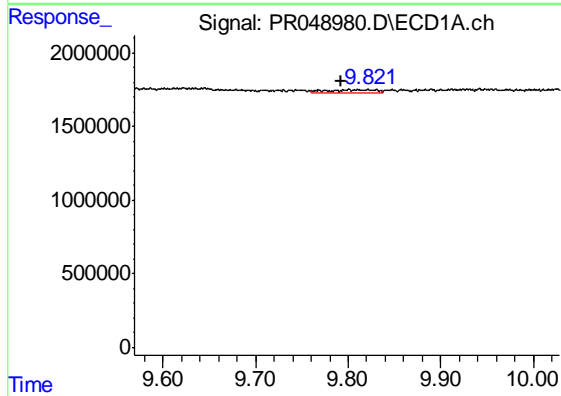


#39 AR-1262-4  
 R.T.: 9.081 min  
 Delta R.T.: -0.011 min  
 Response: 183681  
 Conc: 1.11 ng/ml

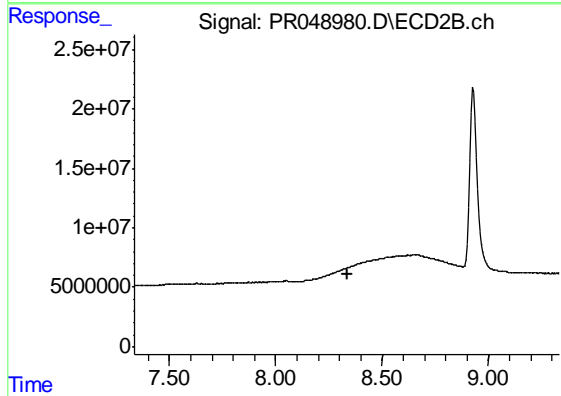
**Instrument :**  
 ECD\_R  
**ClientSampled :**  
 AIBLK72



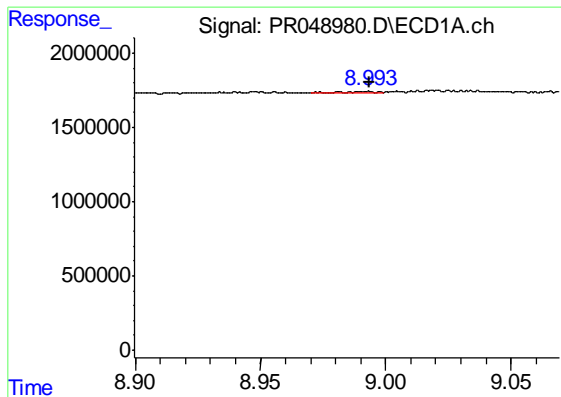
#39 AR-1262-4  
 R.T.: 7.836 min  
 Delta R.T.: 0.009 min  
 Response: 569598  
 Conc: 0.54 ng/ml



#40 AR-1262-5  
 R.T.: 9.822 min  
 Delta R.T.: 0.030 min  
 Response: 679449  
 Conc: 5.55 ng/ml



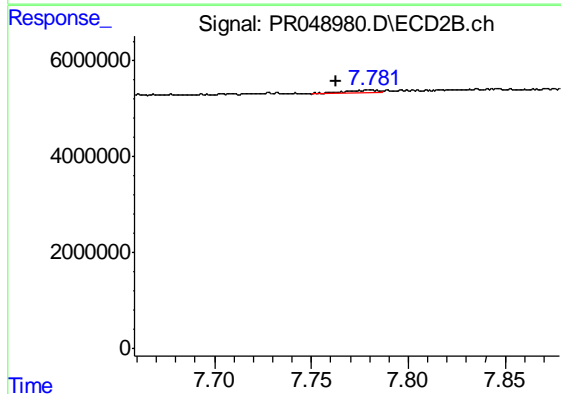
#40 AR-1262-5  
 R.T.: 0.000 min  
 Exp R.T. : 8.335 min  
 Response: 0  
 Conc: N.D.



#41 AR-1268-1

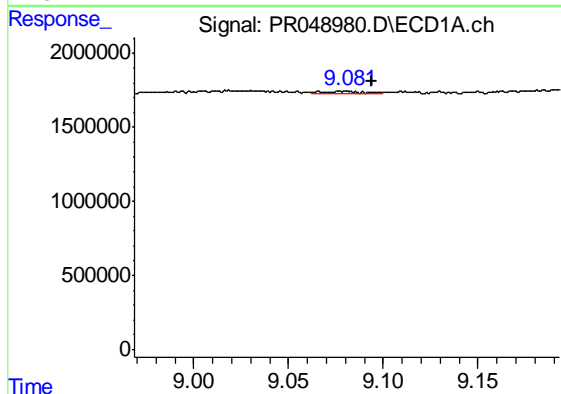
R.T.: 8.992 min  
 Delta R.T.: -0.001 min  
 Response: 101900  
 Conc: 0.28 ng/ml

Instrument :  
 ECD\_R  
 ClientSampleId :  
 AIBLK72



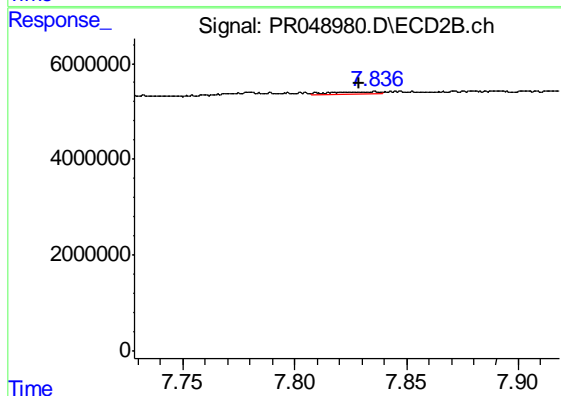
#41 AR-1268-1

R.T.: 7.779 min  
 Delta R.T.: 0.016 min  
 Response: 806751  
 Conc: 0.41 ng/ml



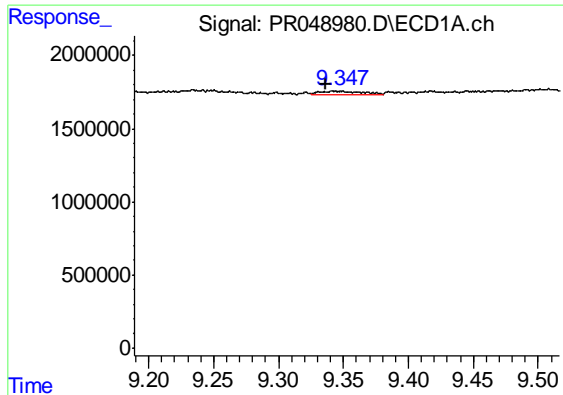
#42 AR-1268-2

R.T.: 9.081 min  
 Delta R.T.: -0.013 min  
 Response: 183681  
 Conc: 0.53 ng/ml



#42 AR-1268-2

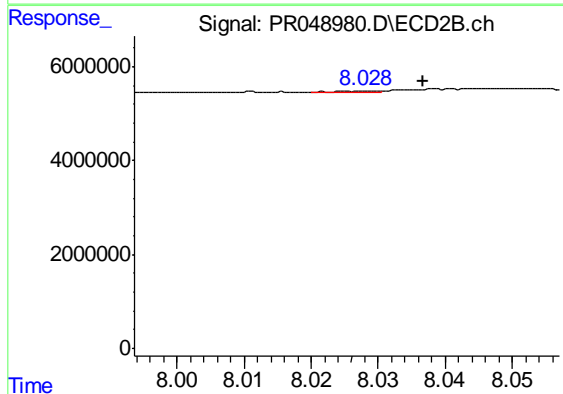
R.T.: 7.836 min  
 Delta R.T.: 0.007 min  
 Response: 569598  
 Conc: 0.33 ng/ml



#43 AR-1268-3

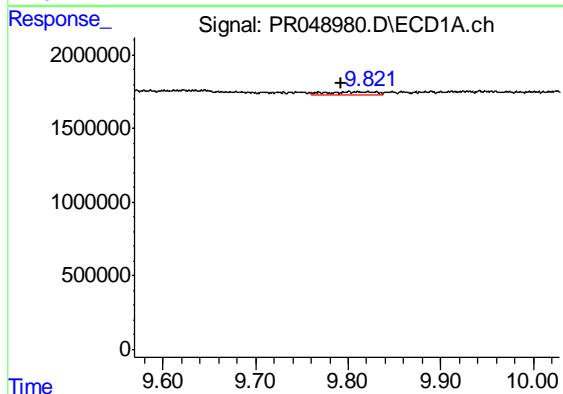
R.T.: 9.348 min  
 Delta R.T.: 0.013 min  
 Response: 626342  
 Conc: 2.10 ng/ml

Instrument :  
 ECD\_R  
 ClientSampleId :  
 AIBLK72



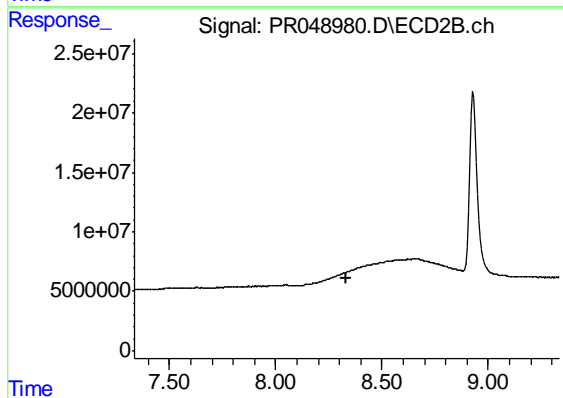
#43 AR-1268-3

R.T.: 8.029 min  
 Delta R.T.: -0.008 min  
 Response: 150687  
 Conc: 0.10 ng/ml



#44 AR-1268-4

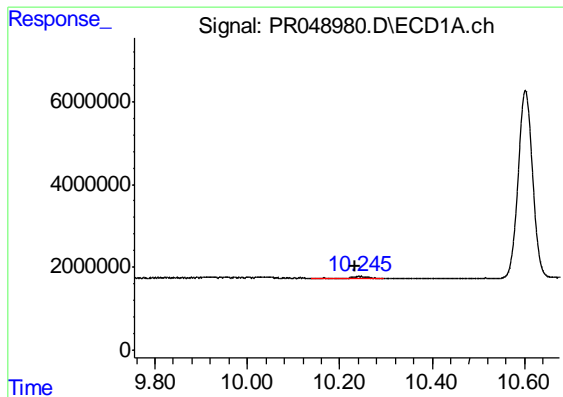
R.T.: 9.822 min  
 Delta R.T.: 0.030 min  
 Response: 679449  
 Conc: 5.00 ng/ml



#44 AR-1268-4

R.T.: 0.000 min  
 Exp R.T. : 8.335 min  
 Response: 0  
 Conc: N.D.

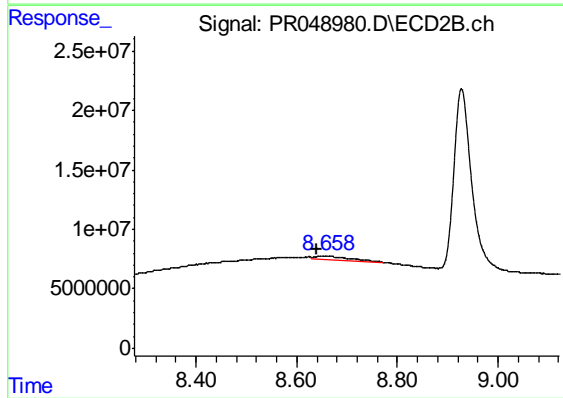




#45 AR-1268-5

R.T.: 10.243 min  
Delta R.T.: 0.009 min  
Response: 1449538  
Conc: 1.43 ng/ml

Instrument :  
ECD\_R  
ClientSampleId :  
AIBLK72



#45 AR-1268-5

R.T.: 8.659 min  
Delta R.T.: 0.018 min  
Response: 11790997  
Conc: 2.98 ng/ml