

Data Path : Z:\pestpcbsrv\HPCHEM1\ECD\_R\Data\PR122019\  
 Data File : PR044060.D  
 Signal(s) : Signal #1: ECD1A.ch Signal #2: ECD2B.ch  
 Acq On : 20 Dec 2019 09:30  
 Operator : SM\AJ  
 Sample : PB125599BL  
 Misc :  
 ALS Vial : 7 Sample Multiplier: 1

Instrument :  
 ECD\_R  
 ClientSampleId :

Integration File signal 1: autoint1.e  
 Integration File signal 2: autoint2.e  
 Quant Time: Dec 20 21:53:54 2019  
 Quant Method : Z:\pestpcbsrv\HPCHEM1\ECD\_R\Method\PR121519CLP.M  
 Quant Title : GC EXTRACTABLES  
 QLast Update : Mon Dec 16 06:15:17 2019  
 Response via : Initial Calibration  
 Integrator: ChemStation

Volume Inj. : 1 µl  
 Signal #1 Phase : ZB MR1 Signal #2 Phase: ZB MR2  
 Signal #1 Info : 30Mx0.32mmx 0.5µm Signal #2 Info : 30M x 0.32mm x 0.25µm

	Compound	RT#1	RT#2	Resp#1	Resp#2	ng/ml	ng/ml
-----							
System Monitoring Compounds							
1)	SA Tetrachlo...	4.728	3.970	87509812	227.1E6	21.895	20.578
2)	SA Decachlor...	10.649	9.065	214.0E6	465.9E6	44.847	46.181
Target Compounds							
9)	L2 AR-1221-2	0.000	4.275	0	2726522	N.D.	33.419 #
20)	L4 AR-1242-5	0.000	5.886	0	10693163	N.D.	36.048 #
25)	L5 AR-1248-5	0.000	5.916	0	429009	N.D.	1.049 #
26)	L6 AR-1254-1	0.000	5.886	0	10693163	N.D.	17.759 #
27)	L6 AR-1254-2	0.000	5.987	0	170388	N.D.	0.314 #
30)	L6 AR-1254-5	0.000	7.086	0	683959	N.D.	0.786 #
32)	L7 AR-1260-2	0.000	6.727	0	3733638	N.D.	4.652 #
36)	L8 AR-1262-1	0.000	7.086	0	683959	N.D.	1.383 #
43)	L9 AR-1268-3	0.000	8.171	0	2531262	N.D.	1.406 #
45)	L9 AR-1268-5	0.000	8.790	0	3762188	N.D.	0.771 #
-----							

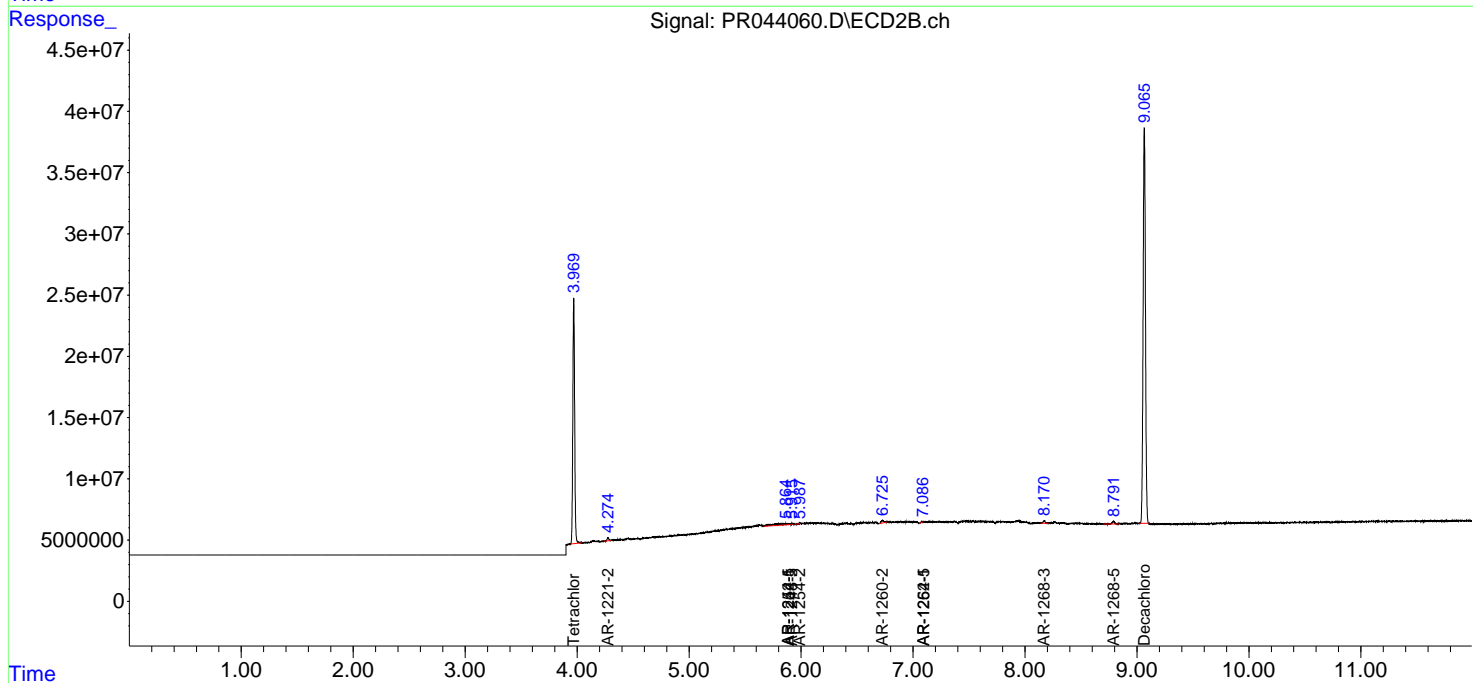
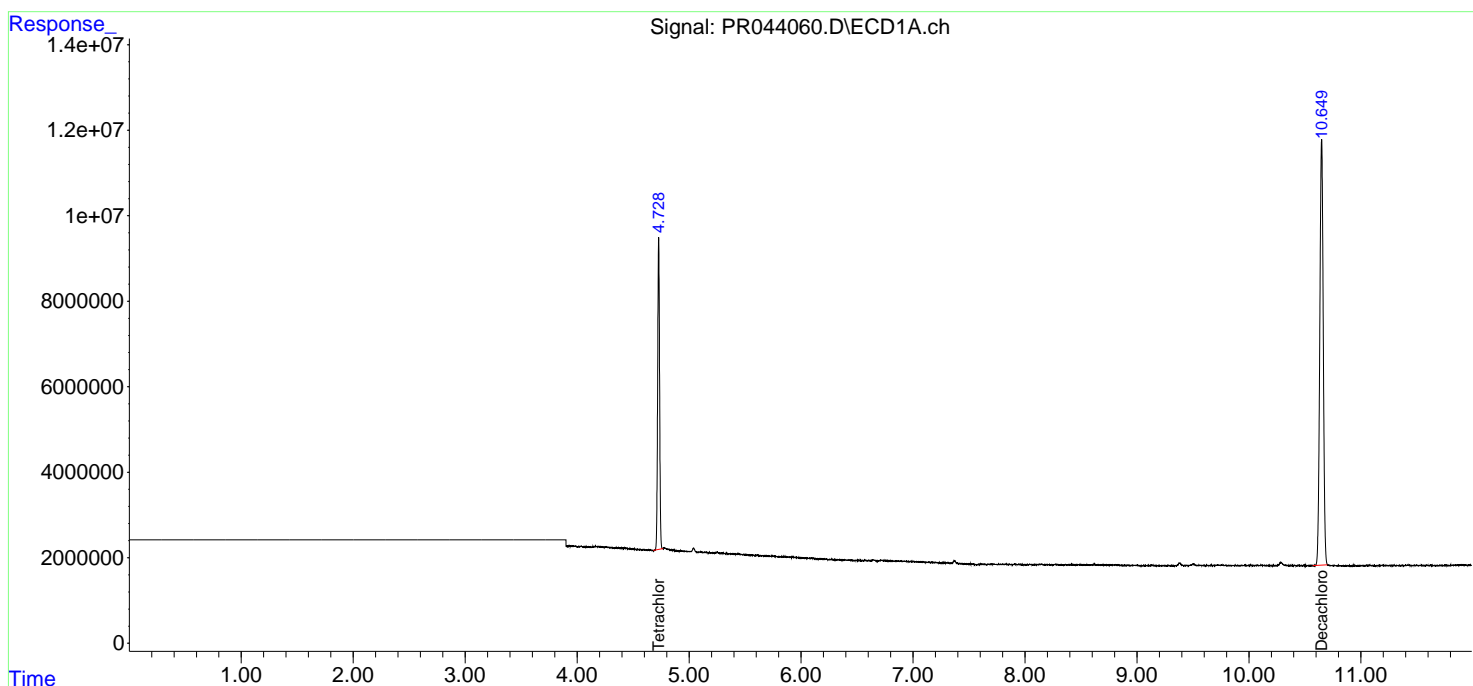
(f)=RT Delta > 1/2 Window (#)=Amounts differ by > 25% (m)=manual int.

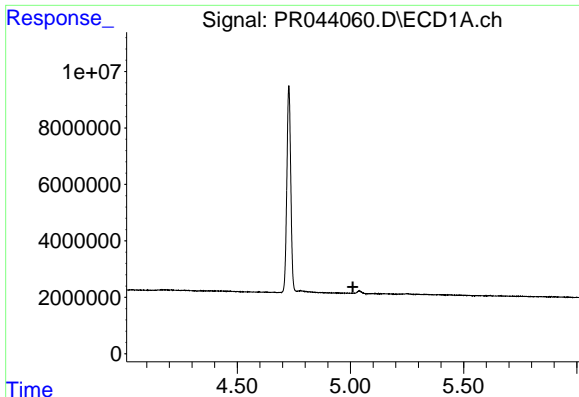
Data Path : Z:\pestpcbsrv\HPCHEM1\ECD\_R\Data\PR122019\  
 Data File : PR044060.D  
 Signal(s) : Signal #1: ECD1A.ch Signal #2: ECD2B.ch  
 Acq On : 20 Dec 2019 09:30  
 Operator : SM\AJ  
 Sample : PB125599BL  
 Misc :  
 ALS Vial : 7 Sample Multiplier: 1

Instrument :  
 ECD\_R  
 ClientSampled :

Integration File signal 1: autoint1.e  
 Integration File signal 2: autoint2.e  
 Quant Time: Dec 20 21:53:54 2019  
 Quant Method : Z:\pestpcbsrv\HPCHEM1\ECD\_R\Method\PR121519CLP.M  
 Quant Title : GC EXTRACTABLES  
 QLast Update : Mon Dec 16 06:15:17 2019  
 Response via : Initial Calibration  
 Integrator: ChemStation

Volume Inj. : 1 µl  
 Signal #1 Phase : ZB MR1 Signal #2 Phase: ZB MR2  
 Signal #1 Info : 30Mx0.32mmx 0.5µm Signal #2 Info : 30M x 0.32mm x 0.25µm

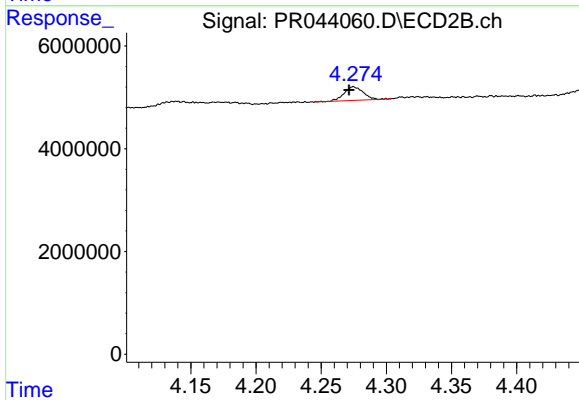




#9 AR-1221-2

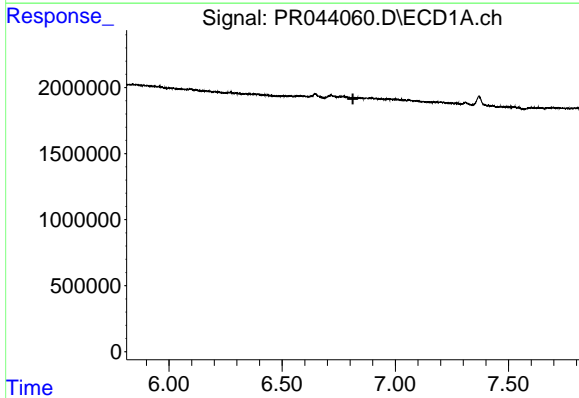
R.T.: 0.000 min  
 Exp R.T. : 5.011 min  
 Response: 0  
 Conc: N.D.

Instrument :  
 ECD\_R  
 ClientSampleId :



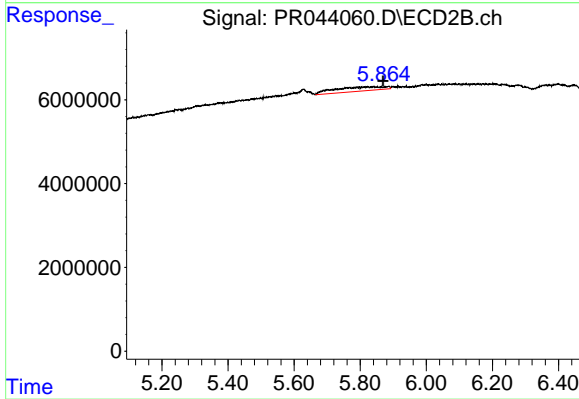
#9 AR-1221-2

R.T.: 4.275 min  
 Delta R.T.: 0.003 min  
 Response: 2726522  
 Conc: 33.42 ng/ml



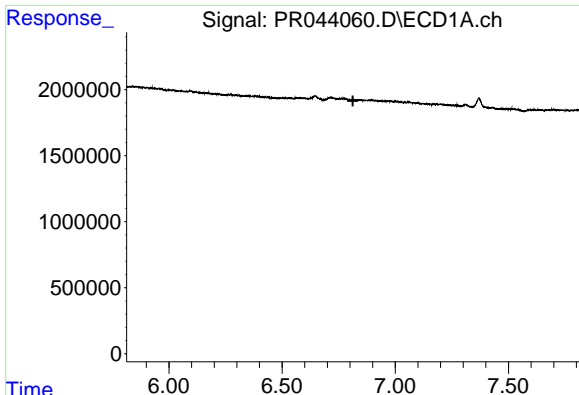
#20 AR-1242-5

R.T.: 0.000 min  
 Exp R.T. : 6.813 min  
 Response: 0  
 Conc: N.D.



#20 AR-1242-5

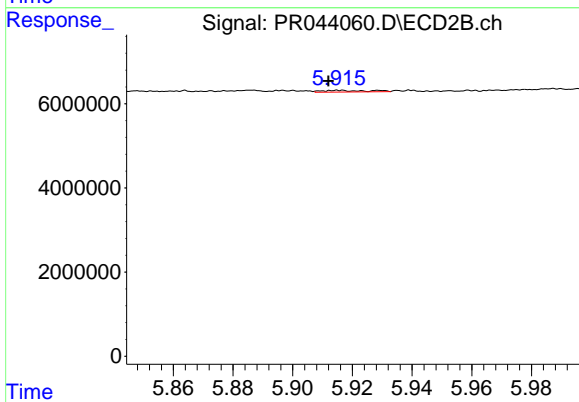
R.T.: 5.886 min  
 Delta R.T.: 0.017 min  
 Response: 10693163  
 Conc: 36.05 ng/ml



#25 AR-1248-5

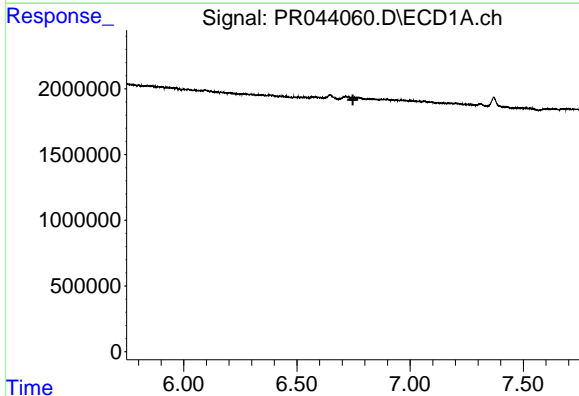
R.T.: 0.000 min  
 Exp R.T. : 6.813 min  
 Response: 0  
 Conc: N.D.

Instrument :  
 ECD\_R  
 ClientSampleId :



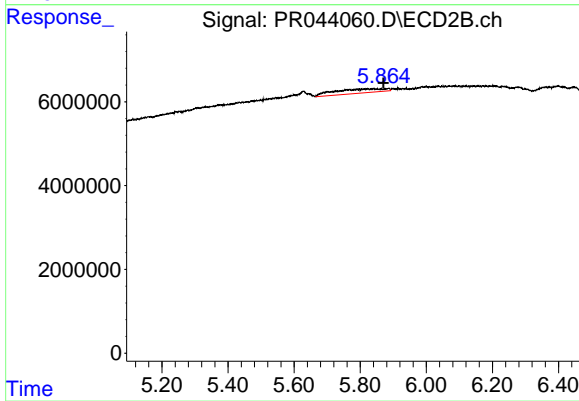
#25 AR-1248-5

R.T.: 5.916 min  
 Delta R.T.: 0.004 min  
 Response: 429009  
 Conc: 1.05 ng/ml



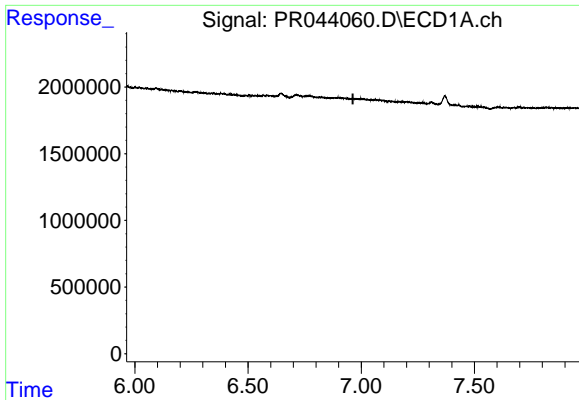
#26 AR-1254-1

R.T.: 0.000 min  
 Exp R.T. : 6.747 min  
 Response: 0  
 Conc: N.D.



#26 AR-1254-1

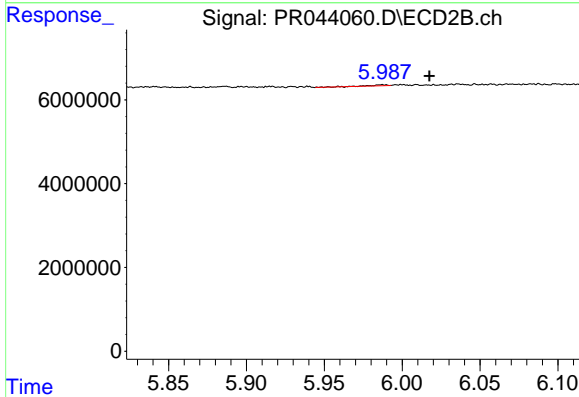
R.T.: 5.886 min  
 Delta R.T.: 0.016 min  
 Response: 10693163  
 Conc: 17.76 ng/ml



#27 AR-1254-2

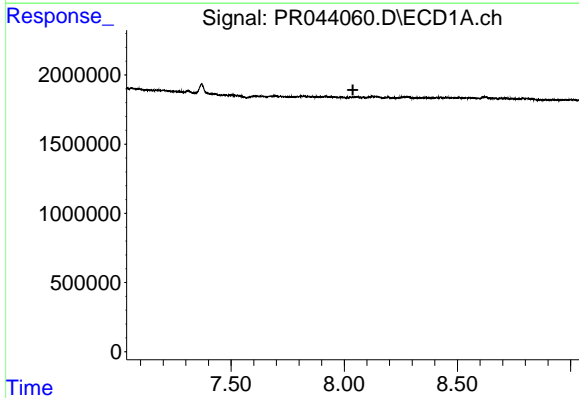
R.T.: 0.000 min  
 Exp R.T.: 6.963 min  
 Response: 0  
 Conc: N.D.

Instrument :  
 ECD\_R  
 ClientSampleId :



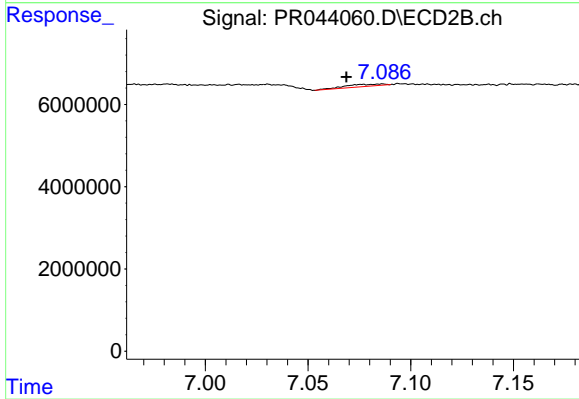
#27 AR-1254-2

R.T.: 5.987 min  
 Delta R.T.: -0.030 min  
 Response: 170388  
 Conc: 0.31 ng/ml



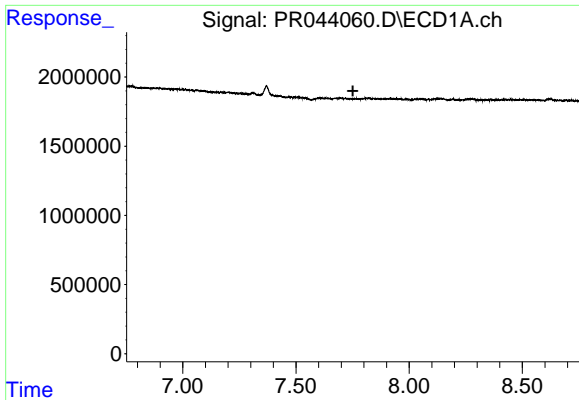
#30 AR-1254-5

R.T.: 0.000 min  
 Exp R.T.: 8.038 min  
 Response: 0  
 Conc: N.D.



#30 AR-1254-5

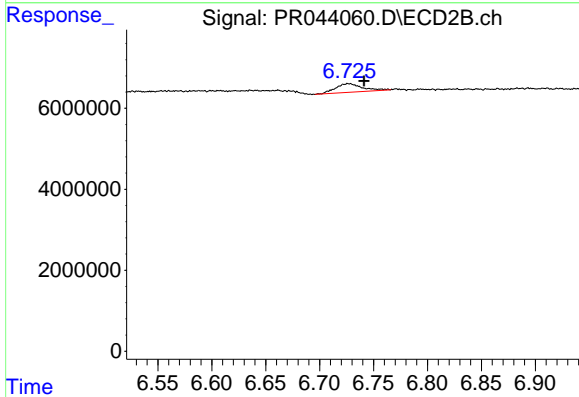
R.T.: 7.086 min  
 Delta R.T.: 0.017 min  
 Response: 683959  
 Conc: 0.79 ng/ml



#32 AR-1260-2

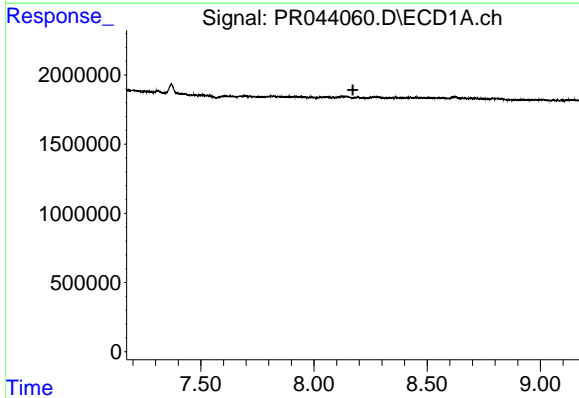
R.T.: 0.000 min  
 Exp R.T. : 7.752 min  
 Response: 0  
 Conc: N.D.

Instrument :  
 ECD\_R  
 ClientSampled :



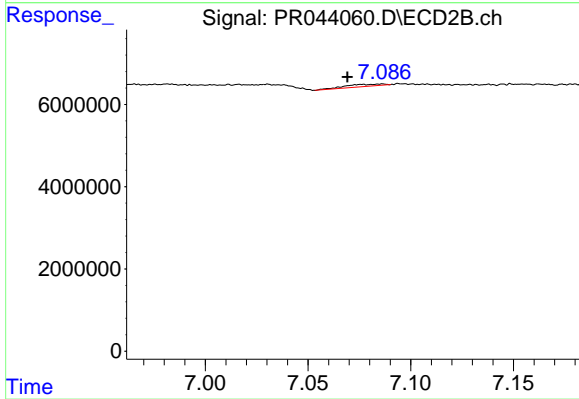
#32 AR-1260-2

R.T.: 6.727 min  
 Delta R.T.: -0.014 min  
 Response: 3733638  
 Conc: 4.65 ng/ml



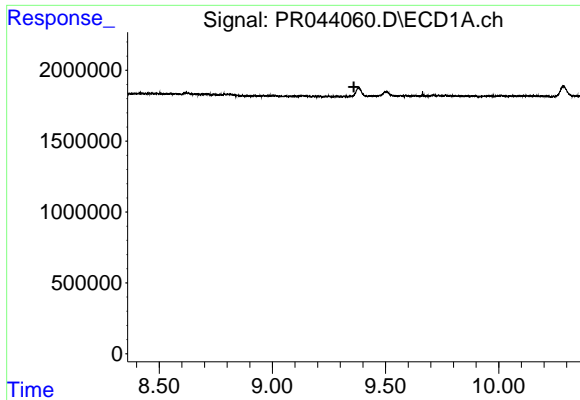
#36 AR-1262-1

R.T.: 0.000 min  
 Exp R.T. : 8.172 min  
 Response: 0  
 Conc: N.D.



#36 AR-1262-1

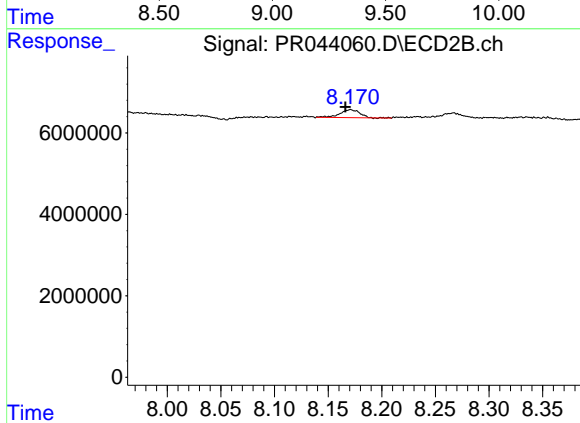
R.T.: 7.086 min  
 Delta R.T.: 0.017 min  
 Response: 683959  
 Conc: 1.38 ng/ml



#43 AR-1268-3

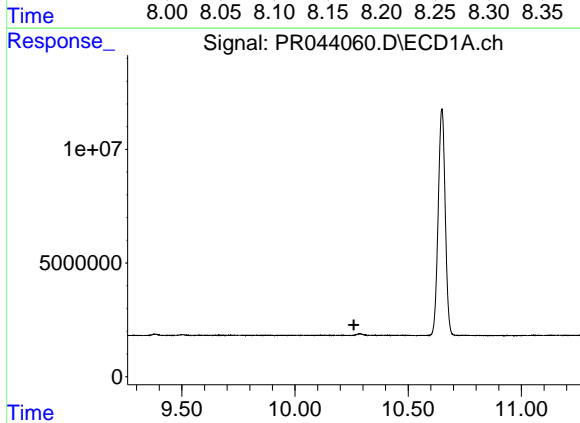
R.T.: 0.000 min  
 Exp R.T.: 9.360 min  
 Response: 0  
 Conc: N.D.

Instrument :  
 ECD\_R  
 ClientSampled :



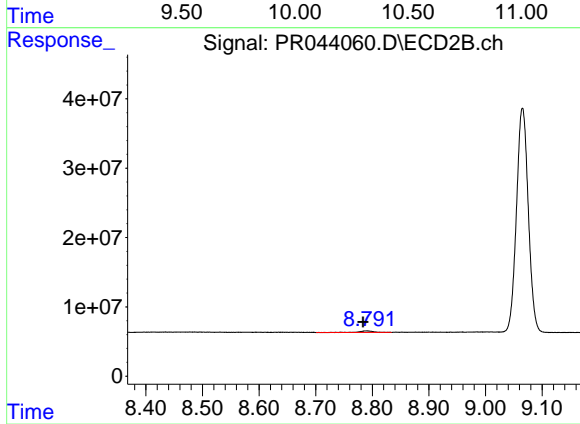
#43 AR-1268-3

R.T.: 8.171 min  
 Delta R.T.: 0.005 min  
 Response: 2531262  
 Conc: 1.41 ng/ml



#45 AR-1268-5

R.T.: 0.000 min  
 Exp R.T.: 10.260 min  
 Response: 0  
 Conc: N.D.



#45 AR-1268-5

R.T.: 8.790 min  
 Delta R.T.: 0.007 min  
 Response: 3762188  
 Conc: 0.77 ng/ml