

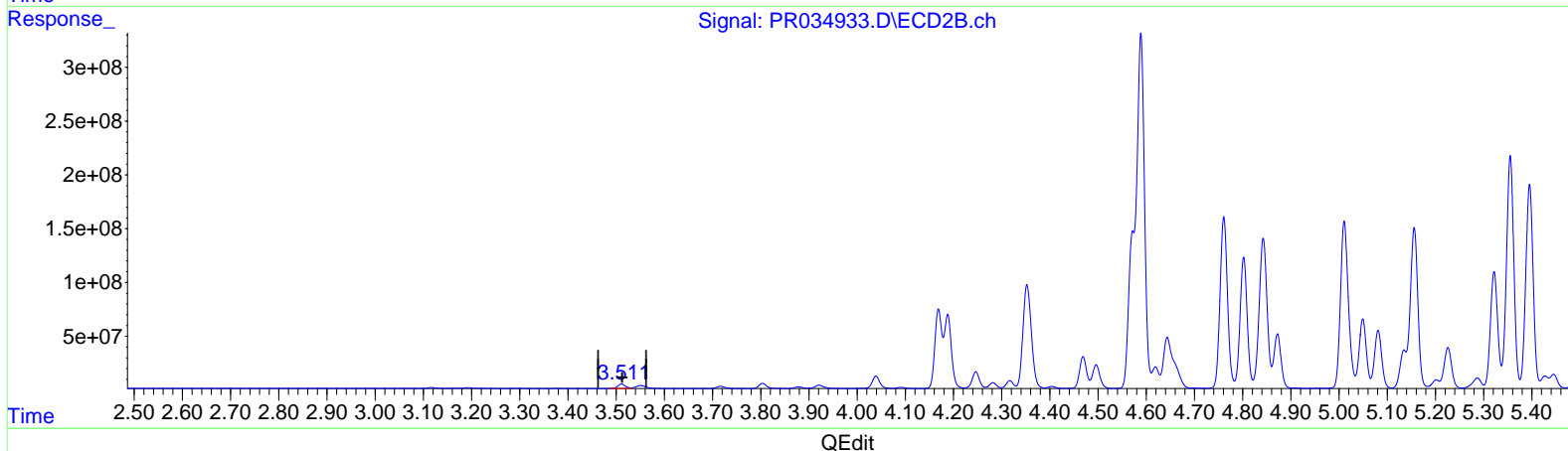
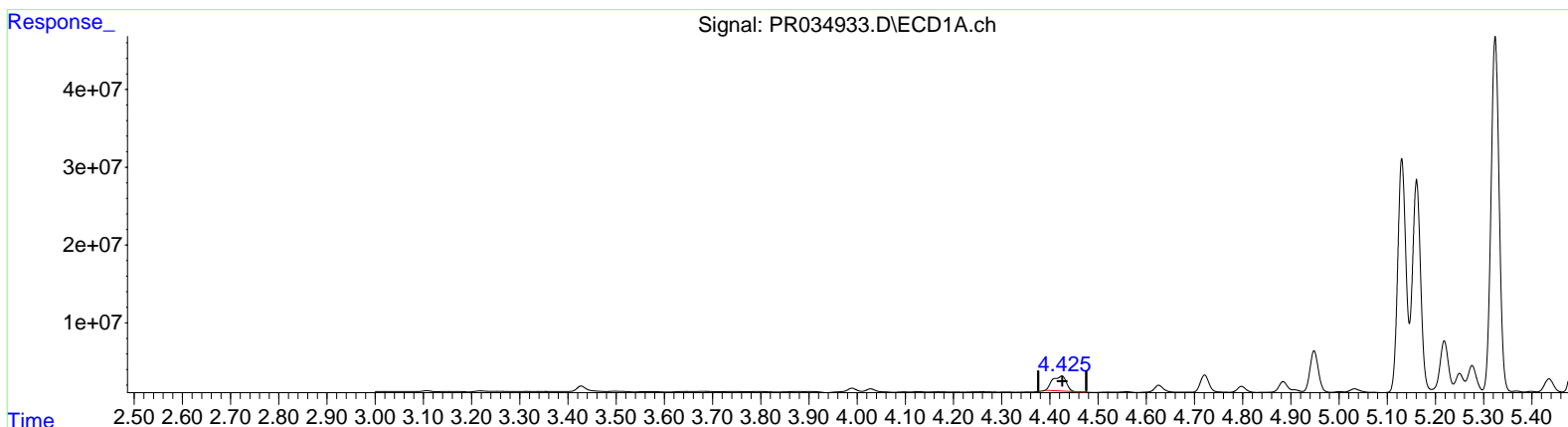
Data Path : Z:\pestpcbsrv\HPCHEM1\ECD_R\Data\PR122118\
 Data File : PR034938.D
 Signal(s) : Signal #1: ECD1A.ch Signal #2: ECD2B.ch
 Acq On : 20 Dec 2018 17:46
 Operator : SM\SJ
 Sample : J6431-10
 Misc :
 ALS Vial : 28 Sample Multiplier: 1

Instrument :
 ECD_R
ClientSampled :
 A41X6

Manual Integrations
APPROVED
 Sohil
 12/21/2018 6:11:58 PM

Integration File signal 1: autoint1.e
 Integration File signal 2: autoint2.e
 Quant Time: Dec 21 00:46:05 2018
 Quant Method : Z:\pestpcbsrv\HPCHEM1\ECD_R\Method\PR121818CLP.M
 Quant Title : GC EXTRACTABLES
 QLast Update : Tue Dec 18 01:56:32 2018
 Response via : Initial Calibration
 Integrator: ChemStation

Volume Inj. : 1 µl
 Signal #1 Phase : ZB MR1 Signal #2 Phase: ZB MR2
 Signal #1 Info : 30Mx0.32mmx 0.5µm Signal #2 Info : 30M x 0.32mm x 0.25µm



(1) Tetrachloro-m-xylene (SA)

4.425min 19.333 ng/ml
 response 37603547

(1) Tetrachloro-m-xylene #2 (SA)

3.511min 12.800 ng/ml
 response 44622689

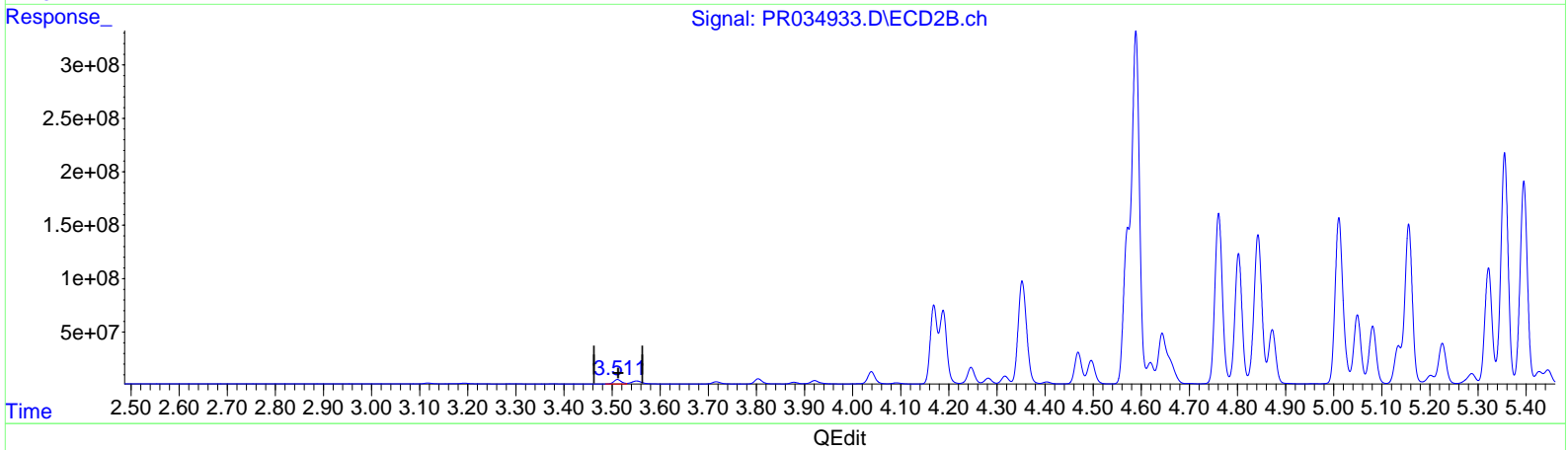
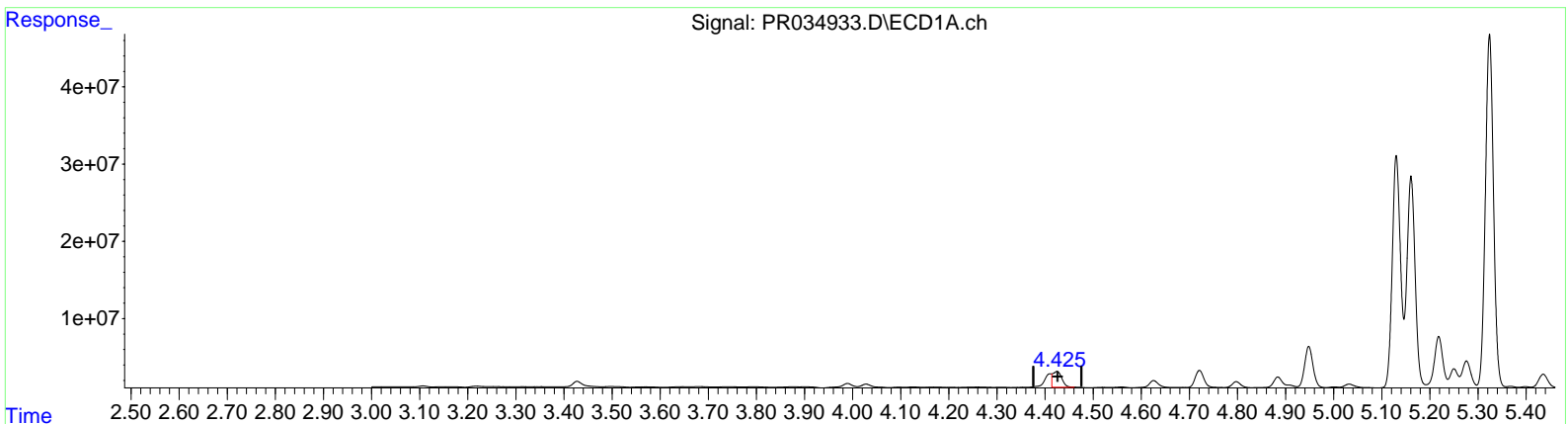
Data Path : Z:\pestpcbsrv\HPCHEM1\ECD_R\Data\PR122118\
 Data File : PR034938.D
 Signal(s) : Signal #1: ECD1A.ch Signal #2: ECD2B.ch
 Acq On : 20 Dec 2018 17:46
 Operator : SM\SJ
 Sample : J6431-10
 Misc :
 ALS Vial : 28 Sample Multiplier: 1

Instrument :
 ECD_R
ClientSampled :
 A41X6

Manual Integrations
APPROVED
 Sohil
 12/21/2018 6:11:58 PM

Integration File signal 1: autoint1.e
 Integration File signal 2: autoint2.e
 Quant Time: Dec 21 00:46:05 2018
 Quant Method : Z:\pestpcbsrv\HPCHEM1\ECD_R\Method\PR121818CLP.M
 Quant Title : GC EXTRACTABLES
 QLast Update : Tue Dec 18 01:56:32 2018
 Response via : Initial Calibration
 Integrator: ChemStation

Volume Inj. : 1 µl
 Signal #1 Phase : ZB MR1 Signal #2 Phase: ZB MR2
 Signal #1 Info : 30Mx0.32mmx 0.5µm Signal #2 Info : 30M x 0.32mm x 0.25µm



(1) Tetrachloro-m-xylene (SA)
 4.425min 13.612 ng/ml m
 response 26475129

(1) Tetrachloro-m-xylene #2 (SA)
 3.511min 13.054 ng/ml m
 response 45505108

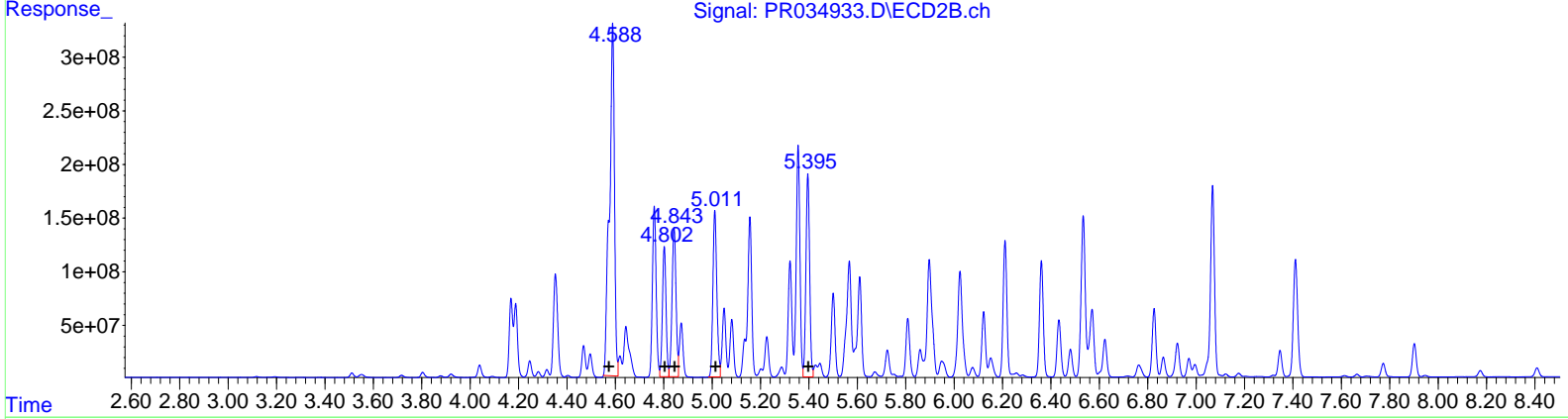
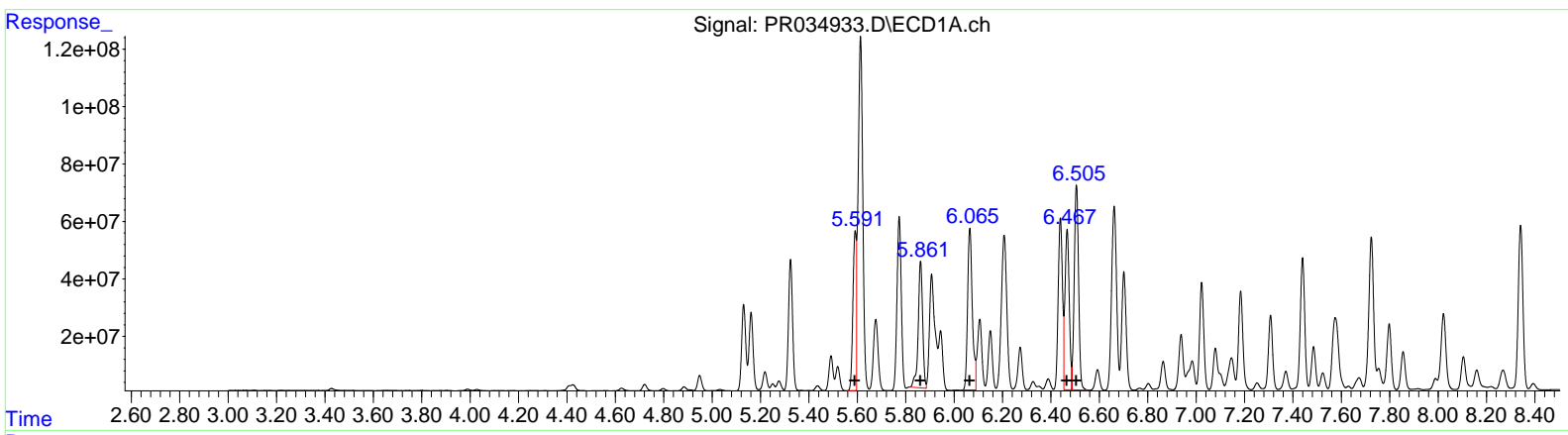
Data Path : Z:\pestpcbsrv\HPCHEM1\ECD_R\Data\PR122118\
 Data File : PR034938.D
 Signal(s) : Signal #1: ECD1A.ch Signal #2: ECD2B.ch
 Acq On : 20 Dec 2018 17:46
 Operator : SM\SJ
 Sample : J6431-10
 Misc :
 ALS Vial : 28 Sample Multiplier: 1

Instrument :
 ECD_R
Client Sampled :
 A41X6

Manual Integrations
APPROVED
 Sohil
 12/21/2018 6:11:58 PM

Integration File signal 1: autoint1.e
 Integration File signal 2: autoint2.e
 Quant Time: Dec 21 00:46:05 2018
 Quant Method : Z:\pestpcbsrv\HPCHEM1\ECD_R\Method\PR121818CLP.M
 Quant Title : GC EXTRACTABLES
 QLast Update : Tue Dec 18 01:56:32 2018
 Response via : Initial Calibration
 Integrator: ChemStation

Volume Inj. : 1 µl
 Signal #1 Phase : ZB MR1 Signal #2 Phase: ZB MR2
 Signal #1 Info : 30Mx0.32mmx 0.5µm Signal #2 Info : 30M x 0.32mm x 0.25µm



QEdit

(21) AR-1248-1 (L5)		
R.T.	Response	Conc
5.59	522790343	10774.16
5.86	562551156	8514.02
6.06	758399693	10150.58
6.47	681844015	7631.51
6.51	891125618	10650.70

(21) AR-1248-1 #2 (L5)		
R.T.	Response	Conc
4.59	4760069616	48820.38
4.80	1260569186	9840.32
4.84	1583185630	11995.90
5.01	1761235681	10704.63
5.40	2010283285	12012.04

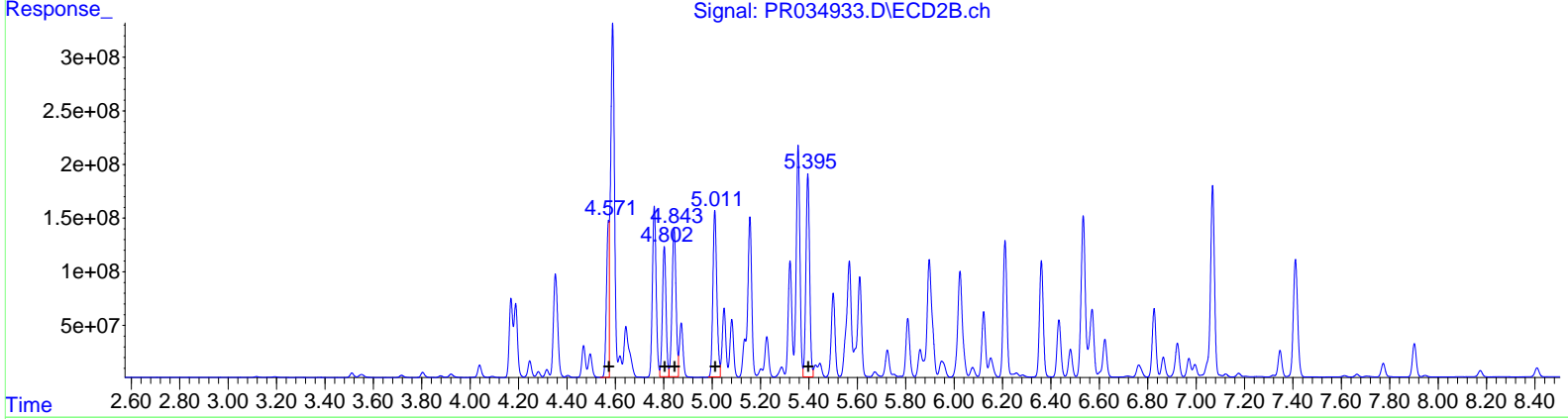
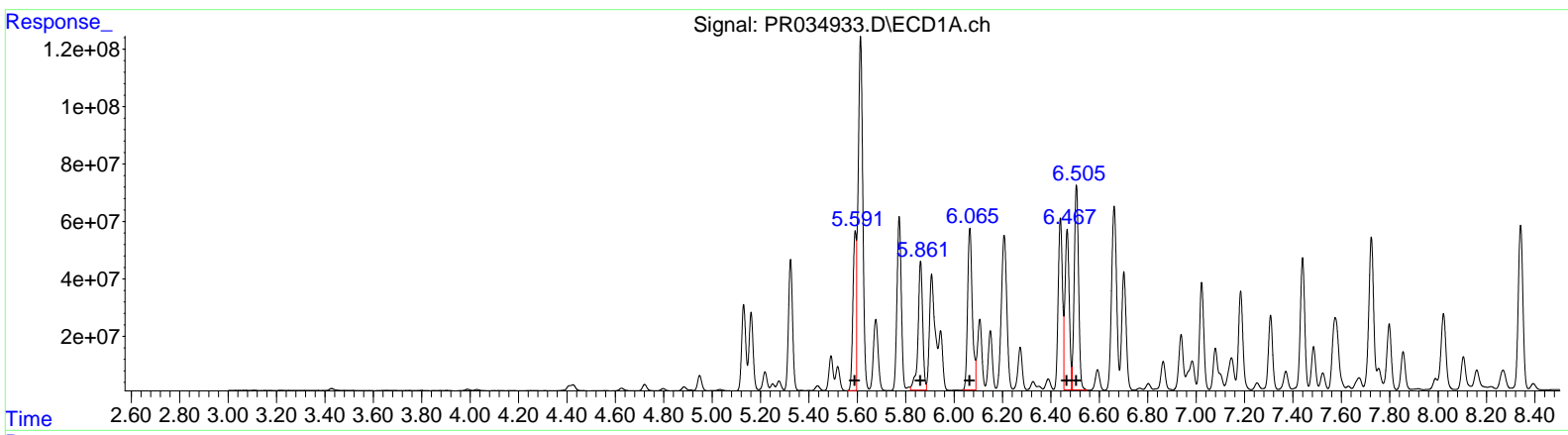
Data Path : Z:\pestpcbsrv\HPCHEM1\ECD_R\Data\PR122118\
 Data File : PR034938.D
 Signal(s) : Signal #1: ECD1A.ch Signal #2: ECD2B.ch
 Acq On : 20 Dec 2018 17:46
 Operator : SM\SJ
 Sample : J6431-10
 Misc :
 ALS Vial : 28 Sample Multiplier: 1

Instrument :
 ECD_R
Client Sampled :
 A41X6

Manual Integrations
APPROVED
 Sohil
 12/21/2018 6:11:58 PM

Integration File signal 1: autoint1.e
 Integration File signal 2: autoint2.e
 Quant Time: Dec 21 00:46:05 2018
 Quant Method : Z:\pestpcbsrv\HPCHEM1\ECD_R\Method\PR121818CLP.M
 Quant Title : GC EXTRACTABLES
 QLast Update : Tue Dec 18 01:56:32 2018
 Response via : Initial Calibration
 Integrator: ChemStation

Volume Inj. : 1 µl
 Signal #1 Phase : ZB MR1 Signal #2 Phase: ZB MR2
 Signal #1 Info : 30Mx0.32mmx 0.5µm Signal #2 Info : 30M x 0.32mm x 0.25µm



QEdit

(21) AR-1248-1 (L5)

R.T.	Response	Conc
5.59	522790343	10774.16
5.86	596106556	9021.87
6.06	758399693	10150.58
6.47	681844015	7631.51
6.51	891125618	10650.70

(21) AR-1248-1 #2 (L5)

R.T.	Response	Conc
4.57	1118427097	11470.85
4.80	1260569186	9840.32
4.84	1583185630	11995.90
5.01	1761235681	10704.63
5.40	2010283285	12012.04

(+) = Expected Retention Time

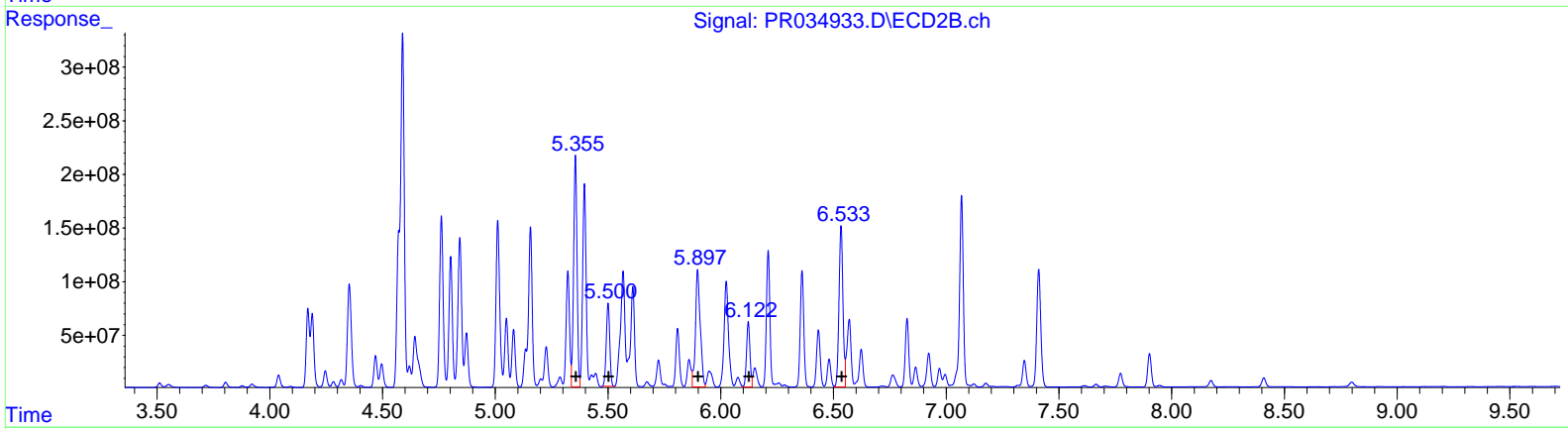
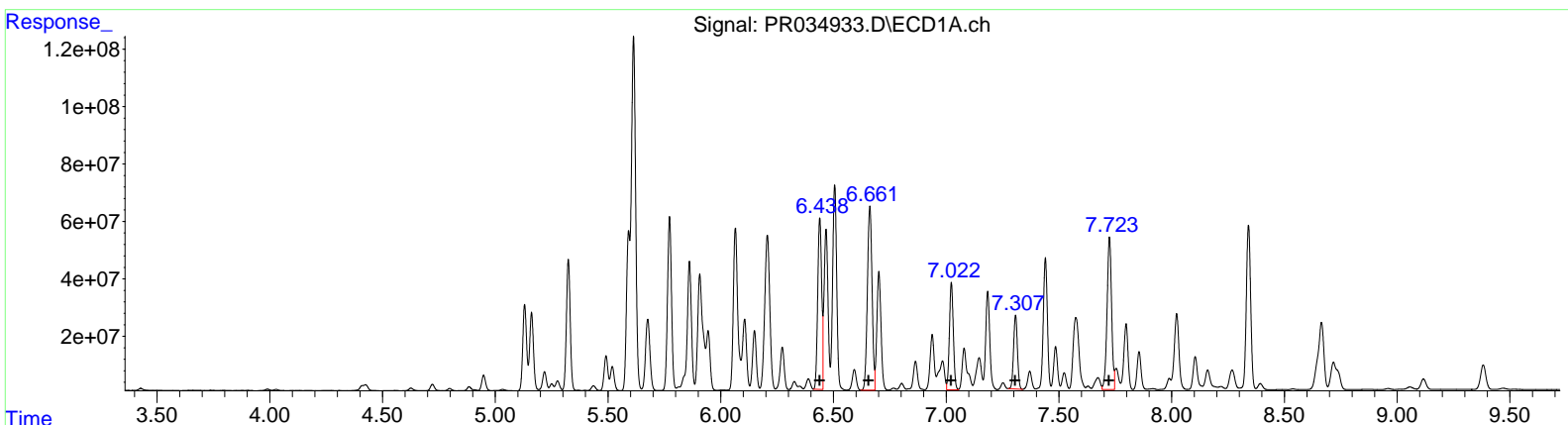
Data Path : Z:\pestpcbsrv\HPCHEM1\ECD_R\Data\PR122118\
 Data File : PR034938.D
 Signal(s) : Signal #1: ECD1A.ch Signal #2: ECD2B.ch
 Acq On : 20 Dec 2018 17:46
 Operator : SM\SJ
 Sample : J6431-10
 Misc :
 ALS Vial : 28 Sample Multiplier: 1

Instrument :
 ECD_R
Client Sampled :
 A41X6

Manual Integrations
APPROVED
 Sohil
 12/21/2018 6:11:58 PM

Integration File signal 1: autoint1.e
 Integration File signal 2: autoint2.e
 Quant Time: Dec 21 00:46:05 2018
 Quant Method : Z:\pestpcbsrv\HPCHEM1\ECD_R\Method\PR121818CLP.M
 Quant Title : GC EXTRACTABLES
 QLast Update : Tue Dec 18 01:56:32 2018
 Response via : Initial Calibration
 Integrator: ChemStation

Volume Inj. : 1 µl
 Signal #1 Phase : ZB MR1 Signal #2 Phase: ZB MR2
 Signal #1 Info : 30Mx0.32mmx 0.5µm Signal #2 Info : 30M x 0.32mm x 0.25µm



QEdit

(26) AR-1254-1 (L6)		
R.T.	Response	Conc
6.44	728328001	8914.12
6.66	918026275	7184.62
7.02	451269877	3343.43
7.31	303759271	2863.55
7.72	743747273	6941.61

(26) AR-1254-1 #2 (L6)		
R.T.	Response	Conc
5.36	2272948868	9288.96
5.50	834868472	3925.29
5.90	1608856392	4502.59
6.12	648700558	2746.52
6.53	1823036087	5715.89

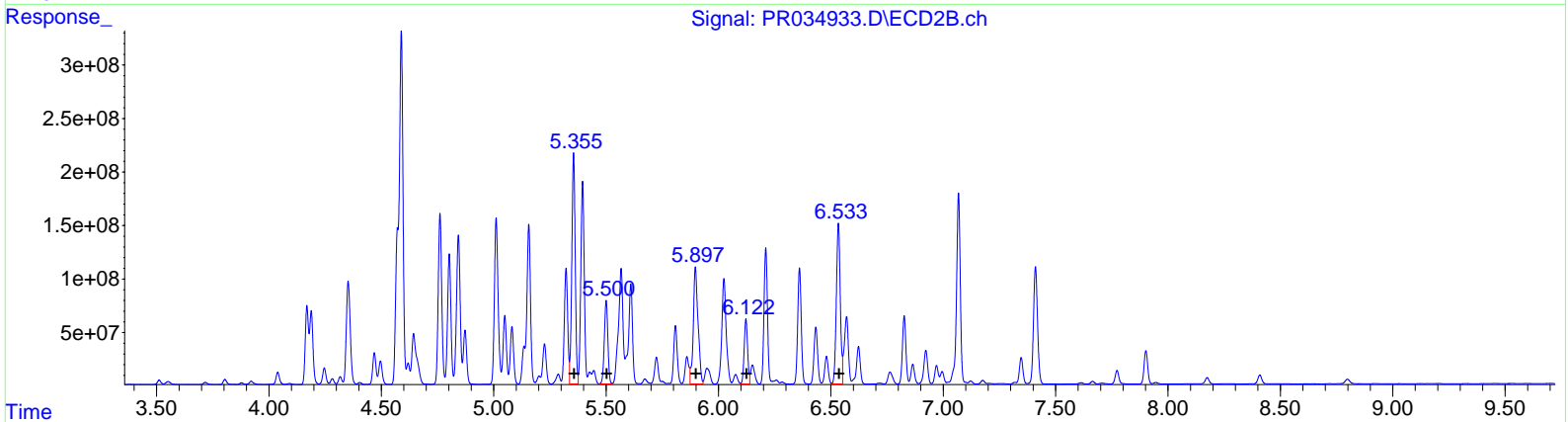
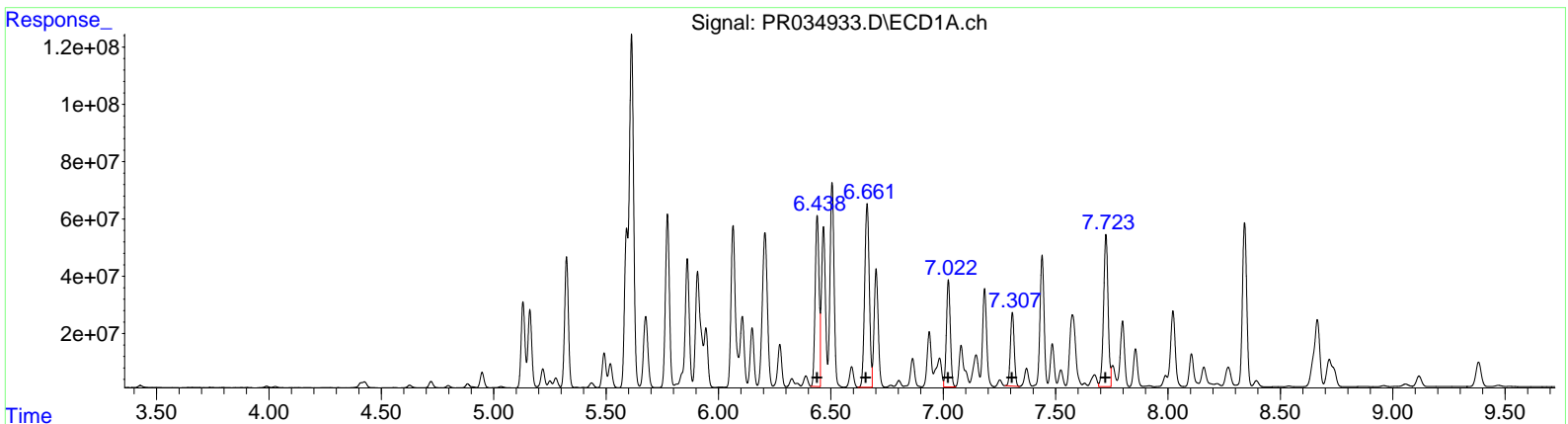
Data Path : Z:\pestpcbsrv\HPCHEM1\ECD_R\Data\PR122118\
 Data File : PR034938.D
 Signal(s) : Signal #1: ECD1A.ch Signal #2: ECD2B.ch
 Acq On : 20 Dec 2018 17:46
 Operator : SM\SJ
 Sample : J6431-10
 Misc :
 ALS Vial : 28 Sample Multiplier: 1

Instrument :
 ECD_R
Client Sampled :
 A41X6

Manual Integrations
APPROVED
 Sohil
 12/21/2018 6:11:58 PM

Integration File signal 1: autoint1.e
 Integration File signal 2: autoint2.e
 Quant Time: Dec 21 00:46:05 2018
 Quant Method : Z:\pestpcbsrv\HPCHEM1\ECD_R\Method\PR121818CLP.M
 Quant Title : GC EXTRACTABLES
 QLast Update : Tue Dec 18 01:56:32 2018
 Response via : Initial Calibration
 Integrator: ChemStation

Volume Inj. : 1 µl
 Signal #1 Phase : ZB MR1 Signal #2 Phase: ZB MR2
 Signal #1 Info : 30Mx0.32mmx 0.5µm Signal #2 Info : 30M x 0.32mm x 0.25µm



QEdit

(26) AR-1254-1 (L6)		
R.T.	Response	Conc
6.44	728328001	8914.12
6.66	918026275	7184.62
7.02	451269877	3343.43
7.31	303759271	2863.55
7.72	743747273	6941.61
(26) AR-1254-1 #2 (L6)		
R.T.	Response	Conc
5.36	2272948868	9288.96
5.50	851753566	4004.68
5.90	1608856392	4502.59
6.12	648700558	2746.52
6.53	1823036087	5715.89

Data Path : Z:\pestpcbsrv\HPCHEM1\ECD_R\Data\PR122118\
 Data File : PR034938.D
 Signal(s) : Signal #1: ECD1A.ch Signal #2: ECD2B.ch
 Acq On : 20 Dec 2018 17:46
 Operator : SM\SJ
 Sample : J6431-10
 Misc :
 ALS Vial : 28 Sample Multiplier: 1

Instrument :
 ECD_R
 Client Sampled :
 A41X6

Integration File signal 1: autoint1.e
 Integration File signal 2: autoint2.e
 Quant Time: Dec 21 00:46:05 2018
 Quant Method : Z:\pestpcbsrv\HPCHEM1\ECD_R\Method\PR121818CLP.M
 Quant Title : GC EXTRACTABLES
 QLast Update : Tue Dec 18 01:56:32 2018
 Response via : Initial Calibration
 Integrator: ChemStation

Manual Integrations
 APPROVED
 Sohil
 12/21/2018 6:11:58 PM

Volume Inj. : 1 µl
 Signal #1 Phase : ZB MR1 Signal #2 Phase: ZB MR2
 Signal #1 Info : 30Mx0.32mmx 0.5µm Signal #2 Info : 30M x 0.32mm x 0.25µm

Compound	RT#1	RT#2	Resp#1	Resp#2	ng/ml	ng/ml

System Monitoring Compounds						
1) SA Tetrachlo...	4.425	3.511	26475129	45505108	13.612m	13.054m
2) SA Decachlor...	10.112	8.409	40979103	100.1E6	20.845	22.776
Target Compounds						
21) L5 AR-1248-1	5.591	4.571	522.8E6	1118.4E6	10774.156	11470.848m
22) L5 AR-1248-2	5.861	4.802	596.1E6	1260.6E6	9021.870m	9840.324
23) L5 AR-1248-3	6.065	4.843	758.4E6	1583.2E6	10150.579	11995.904
24) L5 AR-1248-4	6.467	5.011	681.8E6	1761.2E6	7631.506	10704.628 #
25) L5 AR-1248-5	6.505	5.395	891.1E6	2010.3E6	10650.704	12012.040
31) L7 AR-1260-1	7.184	6.024	431.0E6	1356.5E6	4585.189	6310.327 #
32) L7 AR-1260-2	7.440	6.210	578.0E6	1374.3E6	4978.544	5050.209
33) L7 AR-1260-3	7.724	6.361	743.7E6	1171.2E6	5329.367	4718.033
34) L7 AR-1260-4	8.022	6.826	382.1E6	680.7E6	4424.520	3980.727
35) L7 AR-1260-5	8.341	7.068	757.8E6	2112.1E6	4196.863	4367.127

SJ
 12/28/18

(f)=RT Delta > 1/2 Window (#)=Amounts differ by > 25% (m)=manual int.