

Data Path : Z:\pestpcbsrv\HPCHEM1\ECD\_P\Data\PP122120\  
 Data File : PP032294.D  
 Signal(s) : Signal #1: ECD1A.CH Signal #2: ECD2B.CH  
 Acq On : 21 Dec 2020 22:54  
 Operator : DD\AJ  
 Sample : L5164-17  
 Misc :  
 ALS Vial : 38 Sample Multiplier: 1

Instrument :  
 ECD\_R  
 ClientSampleId :  
 S3-02-A

Integration File signal 1: autoint1.e  
 Integration File signal 2: autoint2.e  
 Quant Time: Dec 22 05:38:42 2020  
 Quant Method : Z:\pestpcbsrv\HPCHEM1\ECD\_P\methods\PP121120.M  
 Quant Title : GC EXTRACTABLES  
 QLast Update : Sat Dec 12 05:15:55 2020  
 Response via : Initial Calibration  
 Integrator: ChemStation 6890 Scale Mode: Small noise peaks clipped

Volume Inj. : 2 µl  
 Signal #1 Phase : ZB-MR1 Signal #2 Phase: ZB-MR2  
 Signal #1 Info : 30Mx0.32mmx 0.50µ Signal #2 Info : 30M x 0.32mm x 0.25µm

Compound	RT#1	RT#2	Resp#1	Resp#2	ng/ml	ng/ml
-----						
System Monitoring Compounds						
1) SA Tetrachlo...	4.776	4.048	1138812	1001218	22.107	21.169
2) SA Decachlor...	10.639	9.338	633749	623074	20.209	18.579
Target Compounds						
3) L1 AR-1016-1	0.000	5.323f	0	17767	N.D.	13.592 #
4) L1 AR-1016-2	0.000	5.323	0	17767	N.D.	8.974 #
6) L1 AR-1016-4	0.000	5.561	0	20422	N.D.	24.068 #
7) L1 AR-1016-5	0.000	5.791	0	30441	N.D.	28.015 #
12) L3 AR-1232-2	0.000	5.323	0	17767	N.D.	20.706 #
15) L3 AR-1232-5	0.000	5.791	0	30441	N.D.	70.379 #
16) L4 AR-1242-1	0.000	5.323f	0	17767	N.D.	17.153 #
17) L4 AR-1242-2	0.000	5.323	0	17767	N.D.	11.494 #
20) L4 AR-1242-5	7.013f	6.170	42294	153608	48.761	172.724 #
21) L5 AR-1248-1	0.000	5.323f	0	17767	N.D.	22.706 #
22) L5 AR-1248-2	0.000	5.561	0	20422	N.D.	17.676 #
24) L5 AR-1248-4	7.013	5.791	42294	30441	29.564	20.760 #
26) L6 AR-1254-1	6.988	6.170	101779	153608	65.527	74.314
27) L6 AR-1254-2	7.216	6.326	119983	74032	52.160	41.296
28) L6 AR-1254-3	7.593	6.747	51865	68659	21.300	24.023
29) L6 AR-1254-4	0.000	6.988	0	29434	N.D.	21.299 #
30) L6 AR-1254-5	8.313	7.413	58755	157799	34.282	66.330 #
31) L7 AR-1260-1	0.000	6.882	0	39556	N.D.	20.864 #
32) L7 AR-1260-2	8.018	7.080	114405	51954	55.683	23.883 #
33) L7 AR-1260-3	8.390	7.233	98481	47161	56.437	22.197 #
34) L7 AR-1260-4	8.637	7.713	194795	146260	108.099	82.326
35) L7 AR-1260-5	8.932	7.963	49985	73562	13.904	19.230 #
36) L8 AR-1262-1	8.390	7.453	98481	95786	36.497	35.642
37) L8 AR-1262-2	8.932	7.963	49985	73562	12.326	17.642 #
38) L8 AR-1262-3	9.228	8.249	392721	371035	137.052	204.798 #
39) L8 AR-1262-4	9.320	8.314	286466	300897	117.511	89.437
40) L8 AR-1262-5	9.941	8.810	73629	77700	54.315	59.307
41) L9 AR-1268-1	9.228	8.249	392721	371035	75.578	73.623
42) L9 AR-1268-2	9.320	8.314	286466	300897	58.852	58.851
43) L9 AR-1268-3	9.532	8.520	279709	253791	64.726	57.562
44) L9 AR-1268-4	9.941	8.810	73629	77700	52.998	53.168
45) L9 AR-1268-5	10.328	9.094	680331	642950	56.484	50.843
-----						

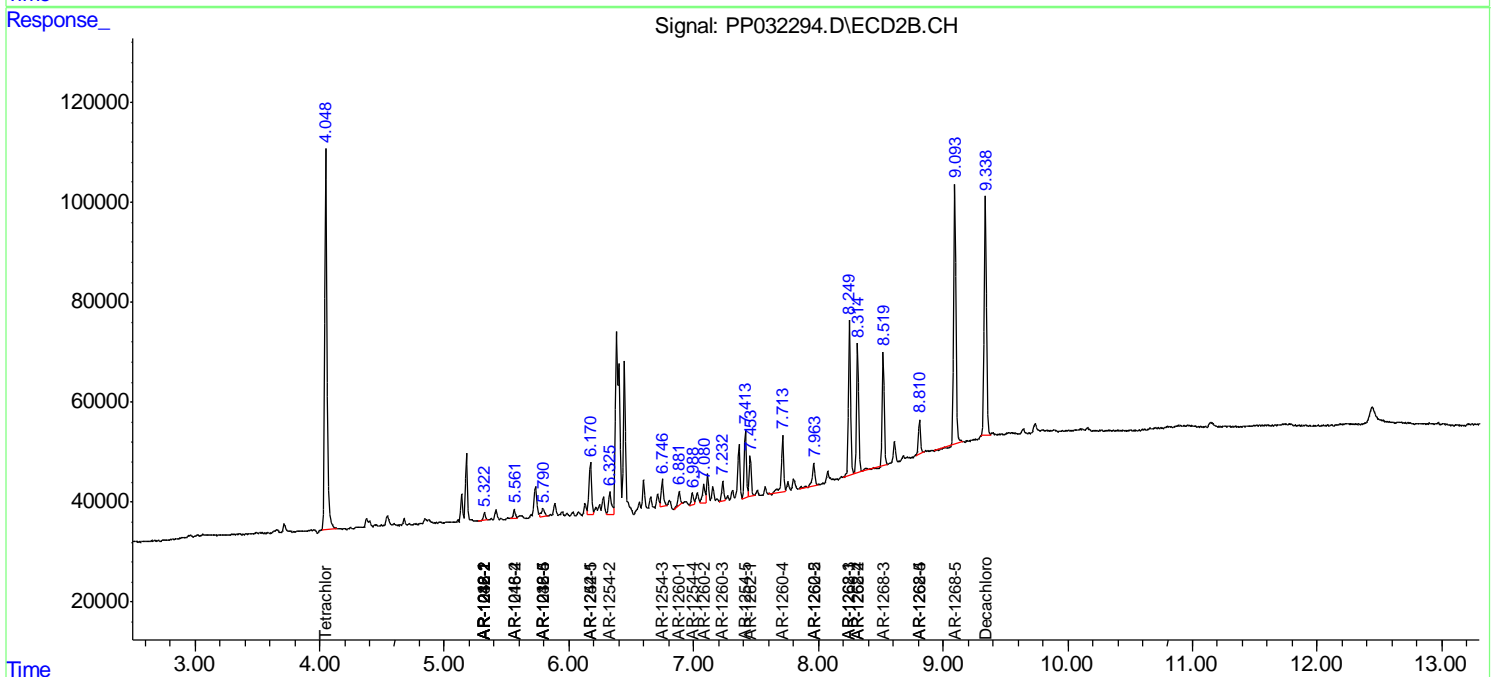
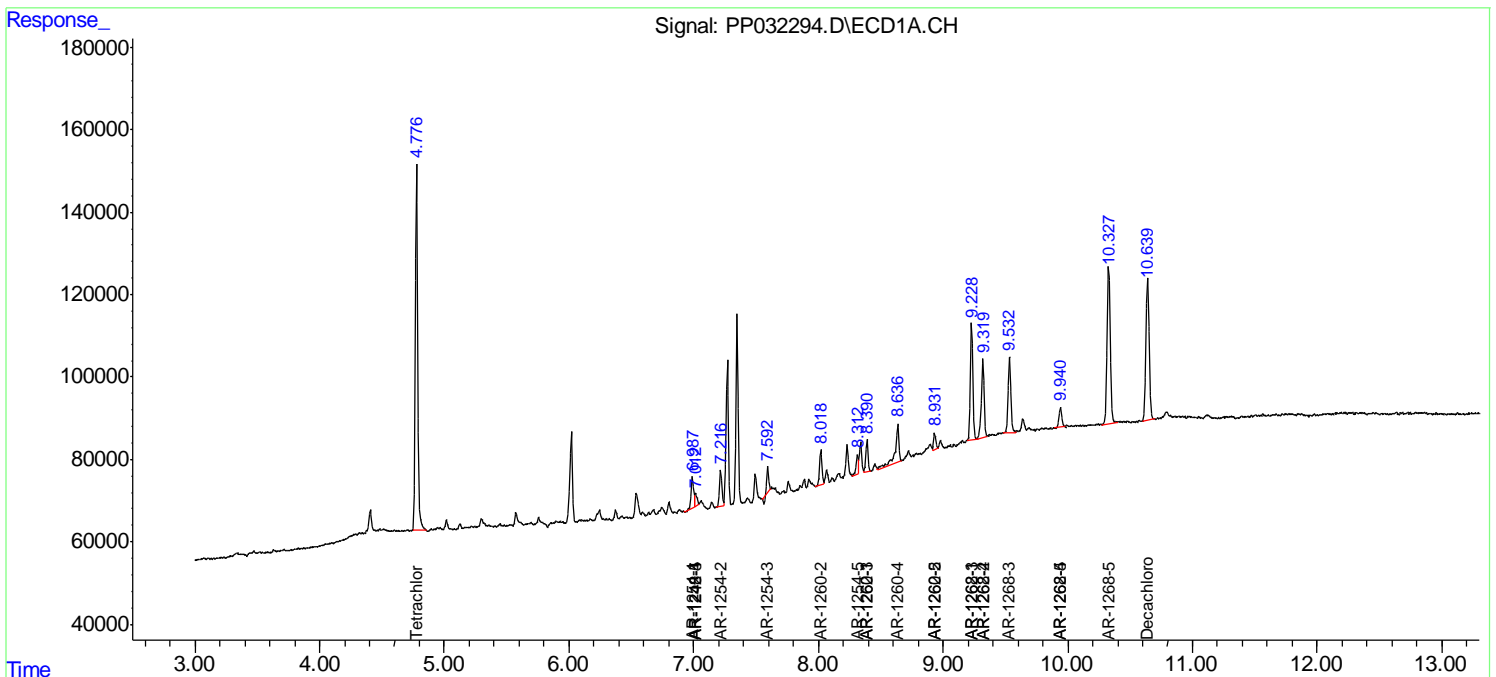
(f)=RT Delta > 1/2 Window (#)=Amounts differ by > 25% (m)=manual int.

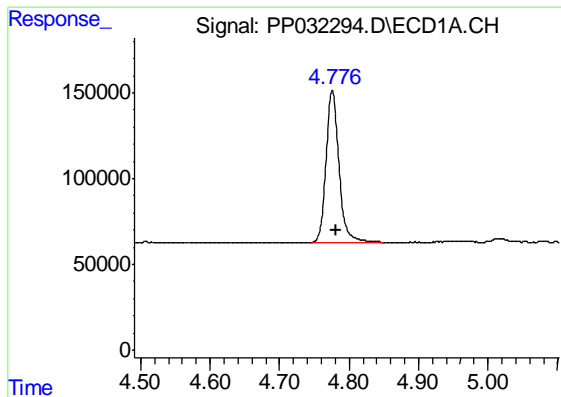
Data Path : Z:\pestpcbsrv\HPCHEM1\ECD\_P\Data\PP122120\  
 Data File : PP032294.D  
 Signal(s) : Signal #1: ECD1A.CH Signal #2: ECD2B.CH  
 Acq On : 21 Dec 2020 22:54  
 Operator : DD\AJ  
 Sample : L5164-17  
 Misc :  
 ALS Vial : 38 Sample Multiplier: 1

Instrument :  
 ECD\_R  
 ClientSampled :  
 S3-02-A

Integration File signal 1: autoint1.e  
 Integration File signal 2: autoint2.e  
 Quant Time: Dec 22 05:38:42 2020  
 Quant Method : Z:\pestpcbsrv\HPCHEM1\ECD\_P\methods\PP121120.M  
 Quant Title : GC EXTRACTABLES  
 QLast Update : Sat Dec 12 05:15:55 2020  
 Response via : Initial Calibration  
 Integrator: ChemStation 6890 Scale Mode: Small noise peaks clipped

Volume Inj. : 2 µl  
 Signal #1 Phase : ZB-MR1 Signal #2 Phase: ZB-MR2  
 Signal #1 Info : 30Mx0.32mmx 0.50µ Signal #2 Info : 30M x 0.32mm x 0.25µm

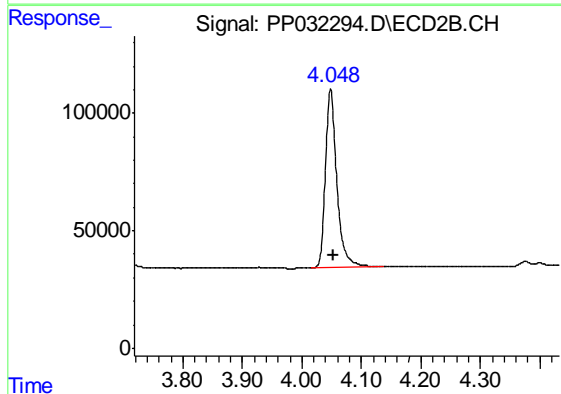




#1 Tetrachloro-m-xylene

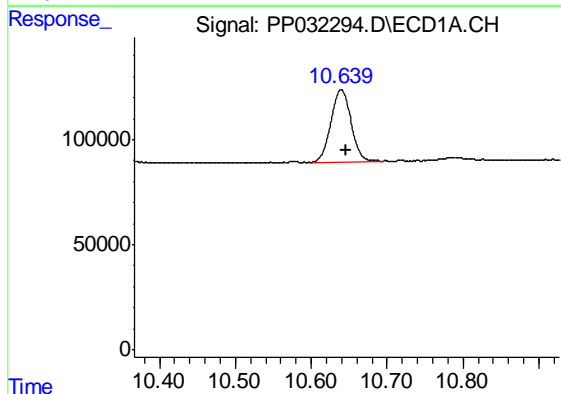
R.T.: 4.776 min  
 Delta R.T.: -0.006 min  
 Response: 1138812  
 Conc: 22.11 ng/ml

Instrument :  
 ECD\_R  
 ClientSampleId :  
 S3-02-A



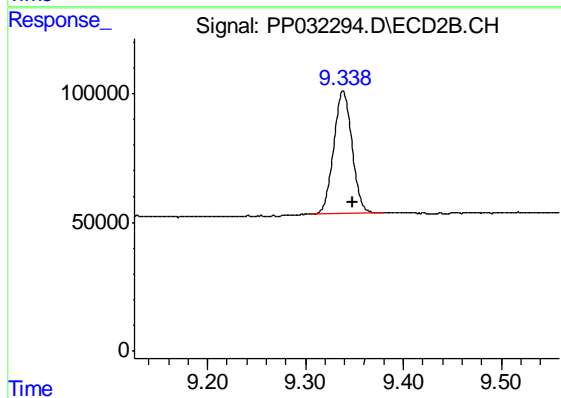
#1 Tetrachloro-m-xylene

R.T.: 4.048 min  
 Delta R.T.: -0.006 min  
 Response: 1001218  
 Conc: 21.17 ng/ml



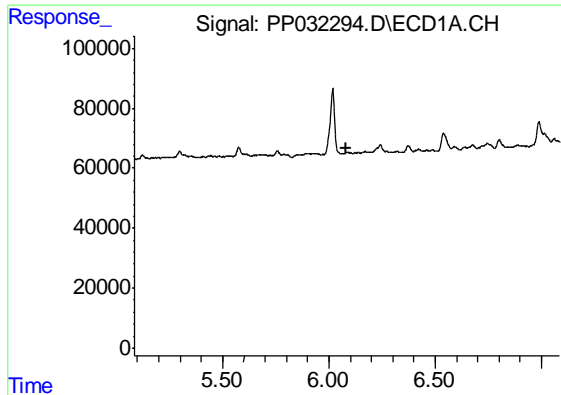
#2 Decachlorobiphenyl

R.T.: 10.639 min  
 Delta R.T.: -0.007 min  
 Response: 633749  
 Conc: 20.21 ng/ml



#2 Decachlorobiphenyl

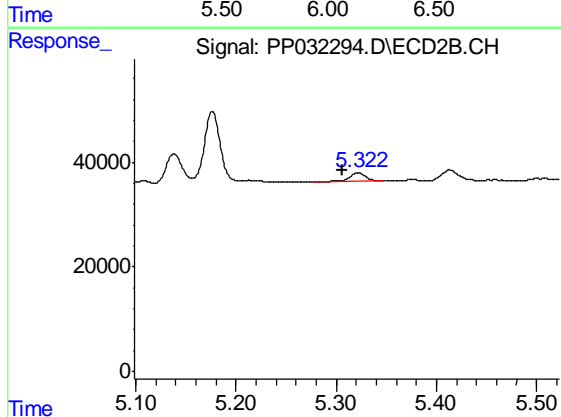
R.T.: 9.338 min  
 Delta R.T.: -0.009 min  
 Response: 623074  
 Conc: 18.58 ng/ml



#3 AR-1016-1

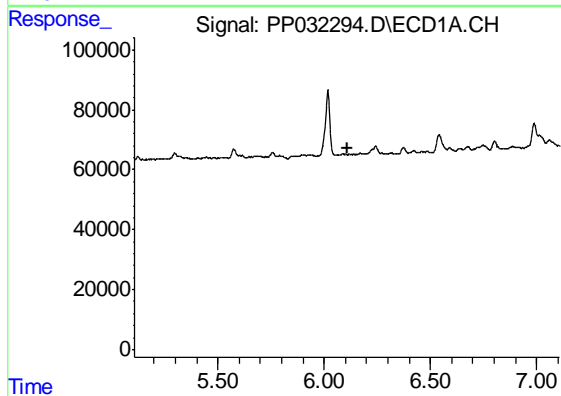
R.T.: 0.000 min  
 Exp R.T. : 6.085 min  
 Response: 0  
 Conc: N.D.

Instrument :  
 ECD\_R  
 ClientSampleId :  
 S3-02-A



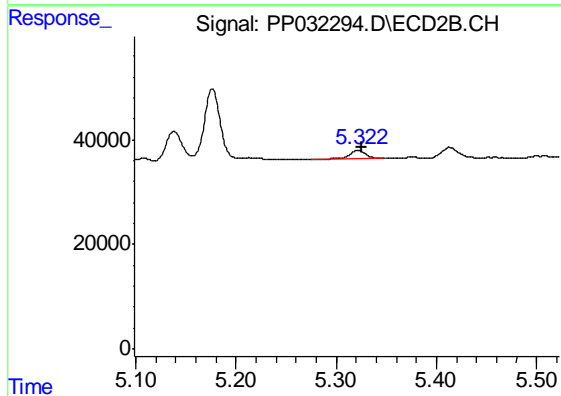
#3 AR-1016-1

R.T.: 5.323 min  
 Delta R.T.: 0.017 min  
 Response: 17767  
 Conc: 13.59 ng/ml



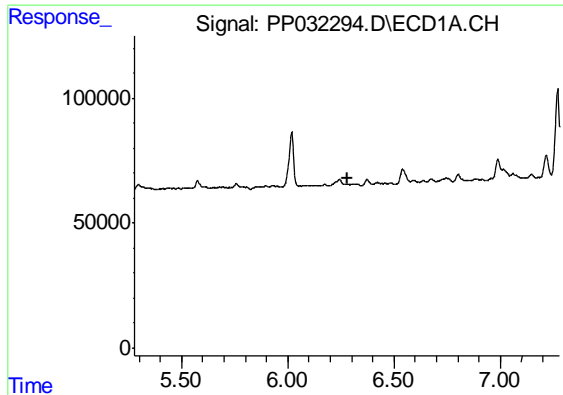
#4 AR-1016-2

R.T.: 0.000 min  
 Exp R.T. : 6.108 min  
 Response: 0  
 Conc: N.D.



#4 AR-1016-2

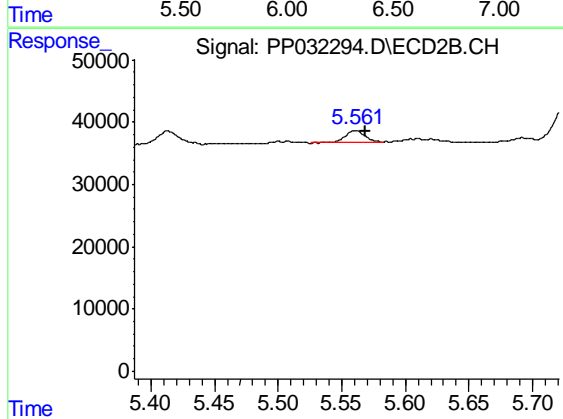
R.T.: 5.323 min  
 Delta R.T.: -0.003 min  
 Response: 17767  
 Conc: 8.97 ng/ml



#6 AR-1016-4

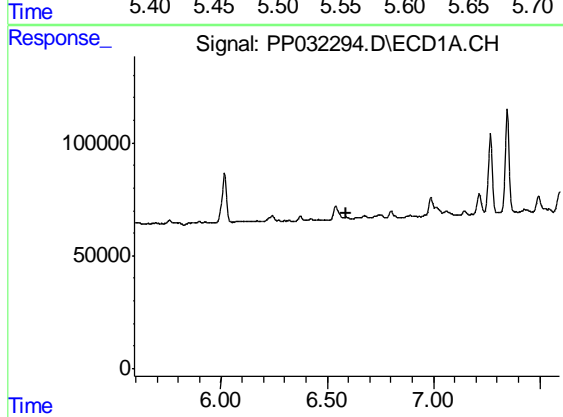
R.T.: 0.000 min  
 Exp R.T. : 6.279 min  
 Response: 0  
 Conc: N.D.

Instrument :  
 ECD\_R  
 ClientSampled :  
 S3-02-A



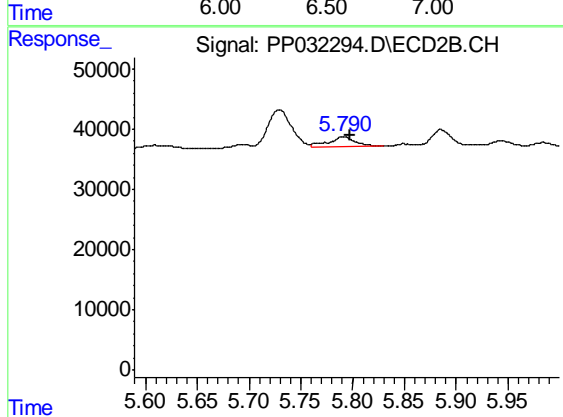
#6 AR-1016-4

R.T.: 5.561 min  
 Delta R.T.: -0.007 min  
 Response: 20422  
 Conc: 24.07 ng/ml



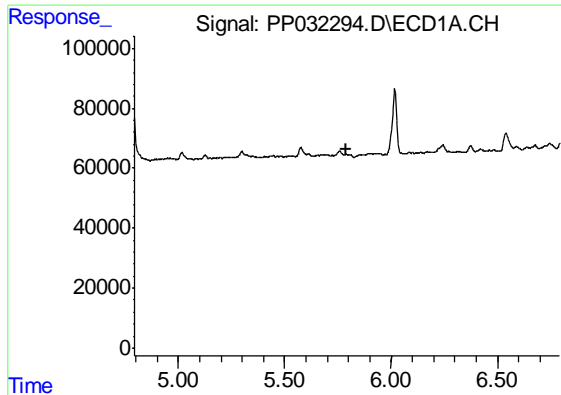
#7 AR-1016-5

R.T.: 0.000 min  
 Exp R.T. : 6.593 min  
 Response: 0  
 Conc: N.D.



#7 AR-1016-5

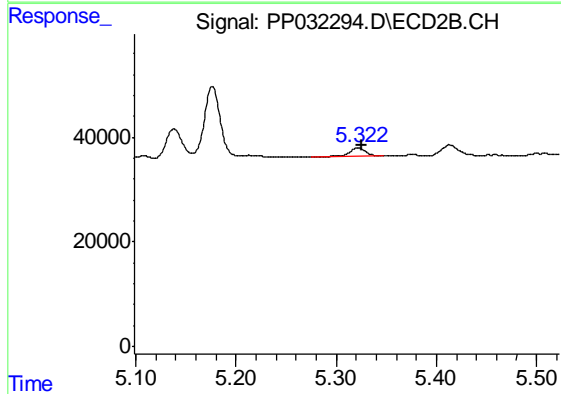
R.T.: 5.791 min  
 Delta R.T.: -0.007 min  
 Response: 30441  
 Conc: 28.01 ng/ml



#12 AR-1232-2

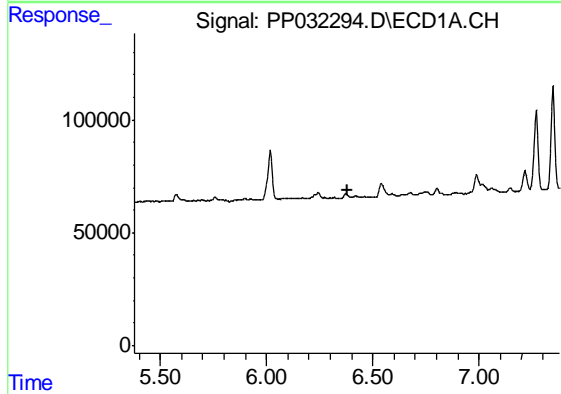
R.T.: 0.000 min  
 Exp R.T. : 5.792 min  
 Response: 0  
 Conc: N.D.

Instrument :  
 ECD\_R  
 ClientSampleId :  
 S3-02-A



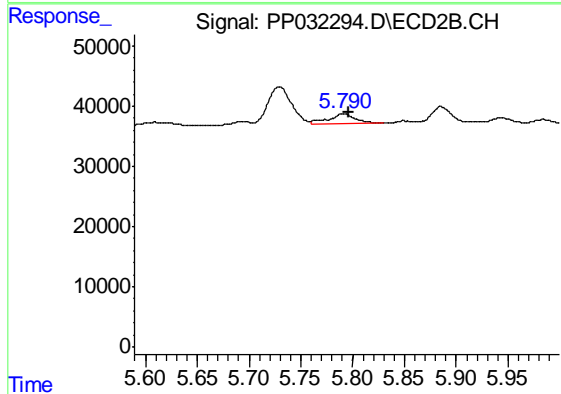
#12 AR-1232-2

R.T.: 5.323 min  
 Delta R.T.: -0.003 min  
 Response: 17767  
 Conc: 20.71 ng/ml



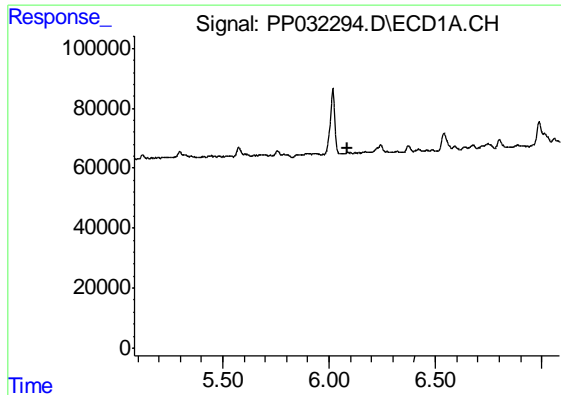
#15 AR-1232-5

R.T.: 0.000 min  
 Exp R.T. : 6.378 min  
 Response: 0  
 Conc: N.D.



#15 AR-1232-5

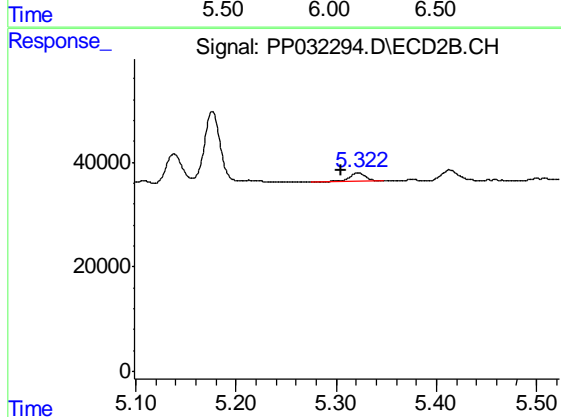
R.T.: 5.791 min  
 Delta R.T.: -0.005 min  
 Response: 30441  
 Conc: 70.38 ng/ml



#16 AR-1242-1

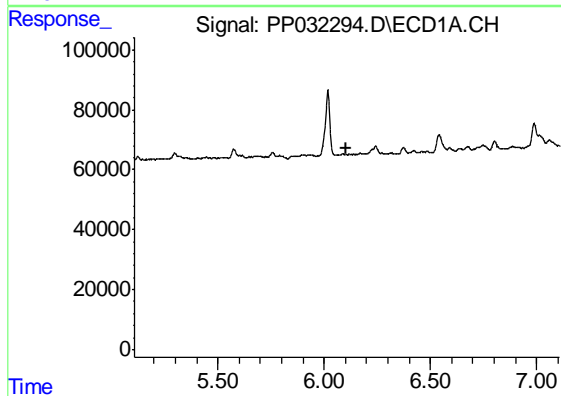
R.T.: 0.000 min  
 Exp R.T. : 6.084 min  
 Response: 0  
 Conc: N.D.

Instrument :  
 ECD\_R  
 ClientSampleId :  
 S3-02-A



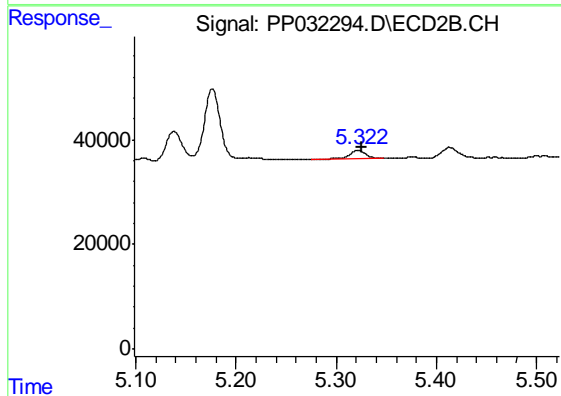
#16 AR-1242-1

R.T.: 5.323 min  
 Delta R.T.: 0.018 min  
 Response: 17767  
 Conc: 17.15 ng/ml



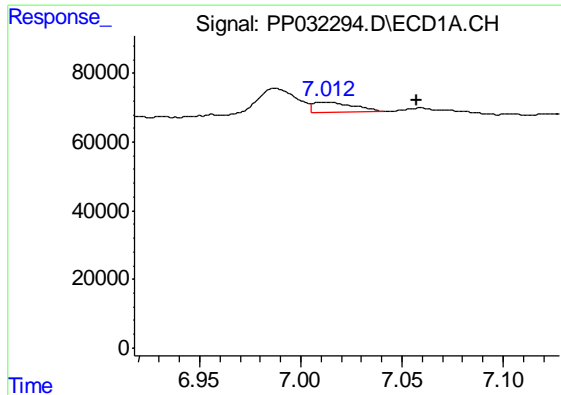
#17 AR-1242-2

R.T.: 0.000 min  
 Exp R.T. : 6.107 min  
 Response: 0  
 Conc: N.D.



#17 AR-1242-2

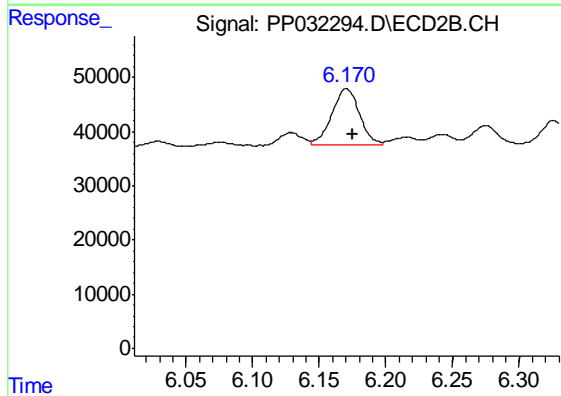
R.T.: 5.323 min  
 Delta R.T.: -0.002 min  
 Response: 17767  
 Conc: 11.49 ng/ml



#20 AR-1242-5

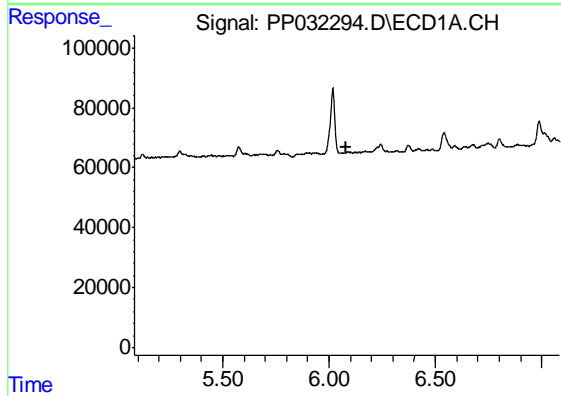
R.T.: 7.013 min  
 Delta R.T.: -0.044 min  
 Response: 42294  
 Conc: 48.76 ng/ml

Instrument :  
 ECD\_R  
 ClientSampled :  
 S3-02-A



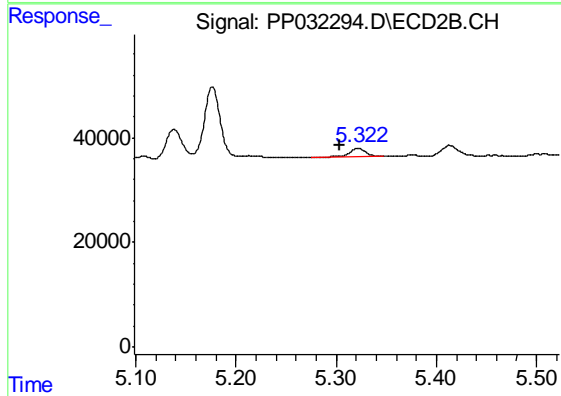
#20 AR-1242-5

R.T.: 6.170 min  
 Delta R.T.: -0.005 min  
 Response: 153608  
 Conc: 172.72 ng/ml



#21 AR-1248-1

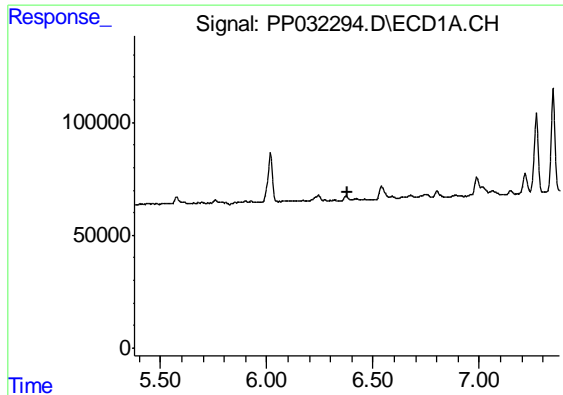
R.T.: 0.000 min  
 Exp R.T. : 6.084 min  
 Response: 0  
 Conc: N.D.



#21 AR-1248-1

R.T.: 5.323 min  
 Delta R.T.: 0.018 min  
 Response: 17767  
 Conc: 22.71 ng/ml

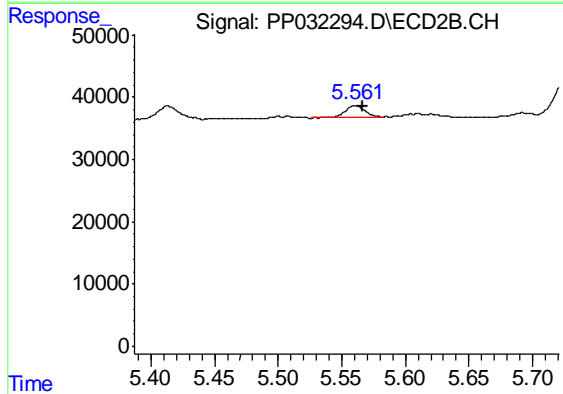




#22 AR-1248-2

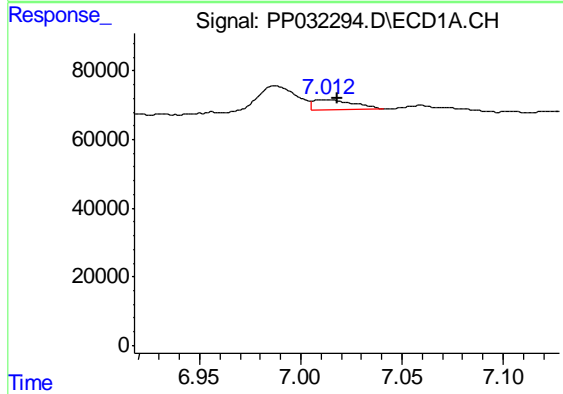
R.T.: 0.000 min  
 Exp R.T. : 6.378 min  
 Response: 0  
 Conc: N.D.

Instrument :  
 ECD\_R  
 ClientSampled :  
 S3-02-A



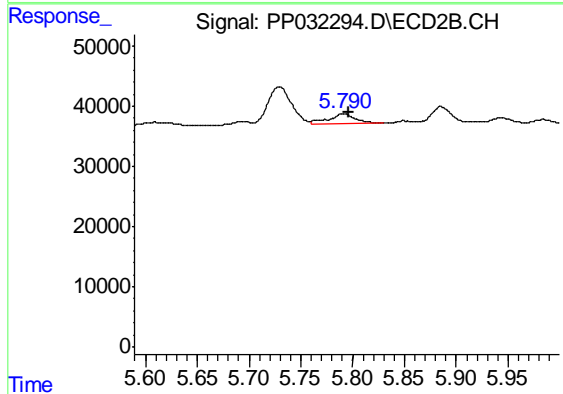
#22 AR-1248-2

R.T.: 5.561 min  
 Delta R.T.: -0.006 min  
 Response: 20422  
 Conc: 17.68 ng/ml



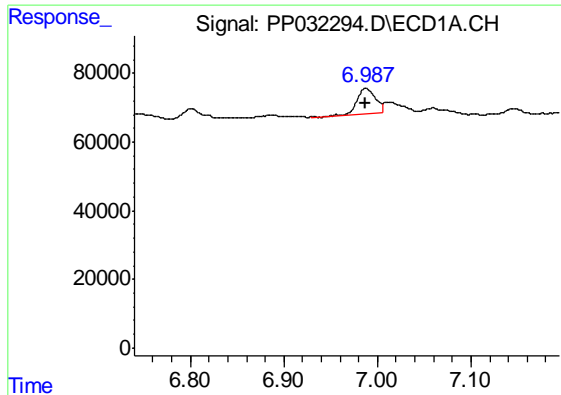
#24 AR-1248-4

R.T.: 7.013 min  
 Delta R.T.: -0.005 min  
 Response: 42294  
 Conc: 29.56 ng/ml



#24 AR-1248-4

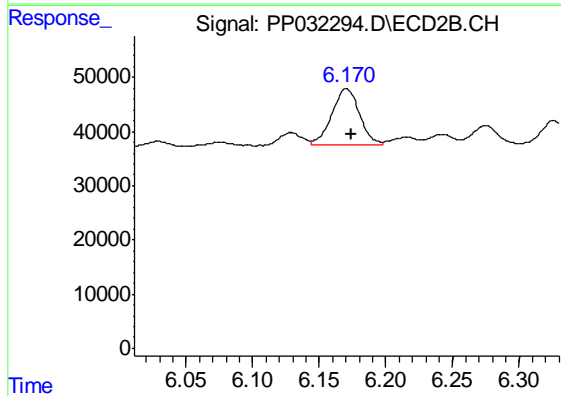
R.T.: 5.791 min  
 Delta R.T.: -0.005 min  
 Response: 30441  
 Conc: 20.76 ng/ml



#26 AR-1254-1

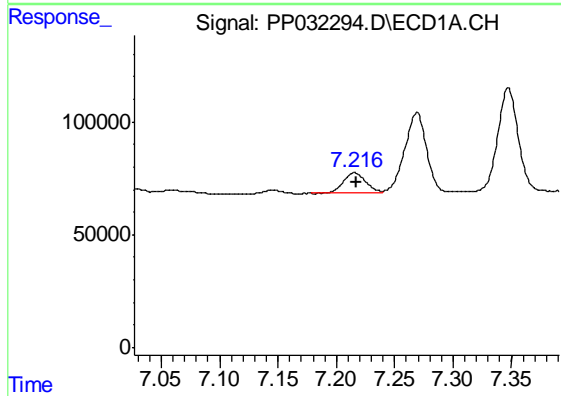
R.T.: 6.988 min  
 Delta R.T.: 0.000 min  
 Response: 101779  
 Conc: 65.53 ng/ml

Instrument :  
 ECD\_R  
 ClientSampled :  
 S3-02-A



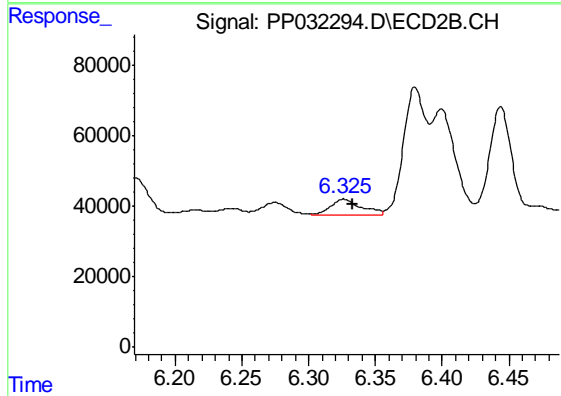
#26 AR-1254-1

R.T.: 6.170 min  
 Delta R.T.: -0.004 min  
 Response: 153608  
 Conc: 74.31 ng/ml



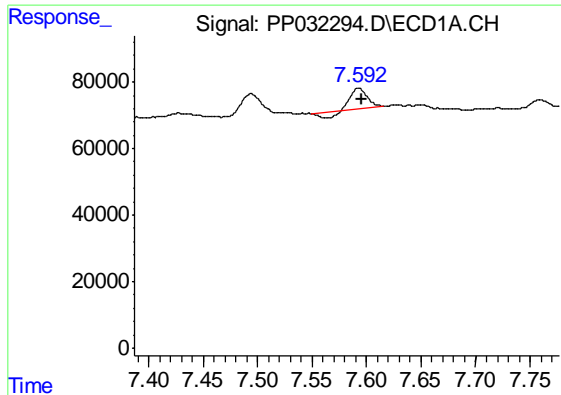
#27 AR-1254-2

R.T.: 7.216 min  
 Delta R.T.: -0.002 min  
 Response: 119983  
 Conc: 52.16 ng/ml



#27 AR-1254-2

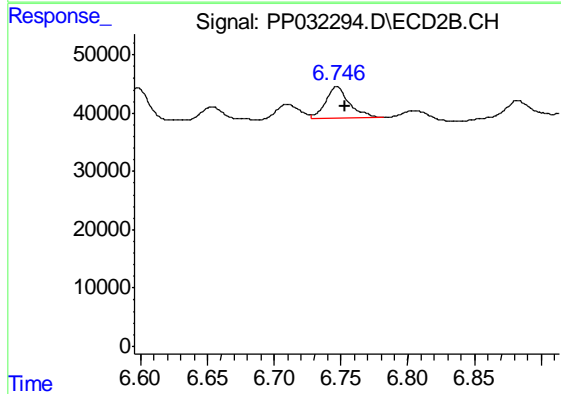
R.T.: 6.326 min  
 Delta R.T.: -0.007 min  
 Response: 74032  
 Conc: 41.30 ng/ml



#28 AR-1254-3

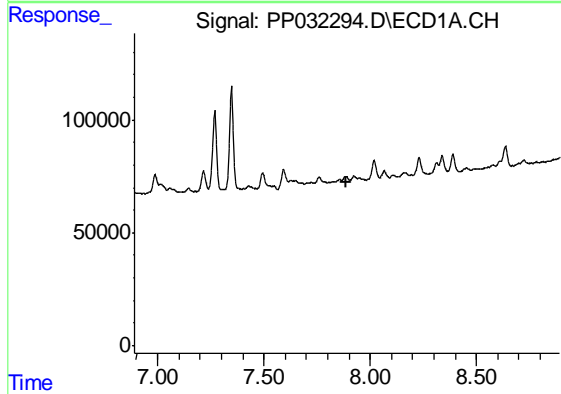
R.T.: 7.593 min  
 Delta R.T.: -0.002 min  
 Response: 51865  
 Conc: 21.30 ng/ml

Instrument :  
 ECD\_R  
 ClientSampleId :  
 S3-02-A



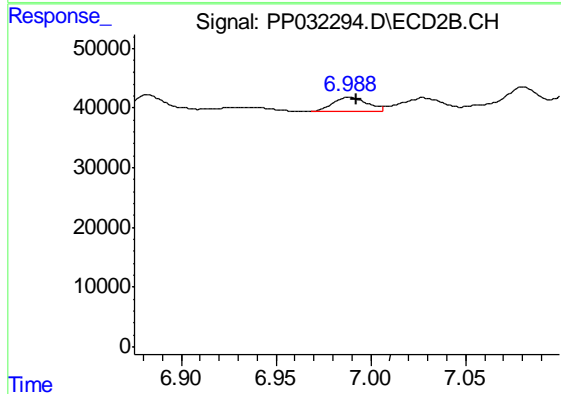
#28 AR-1254-3

R.T.: 6.747 min  
 Delta R.T.: -0.006 min  
 Response: 68659  
 Conc: 24.02 ng/ml



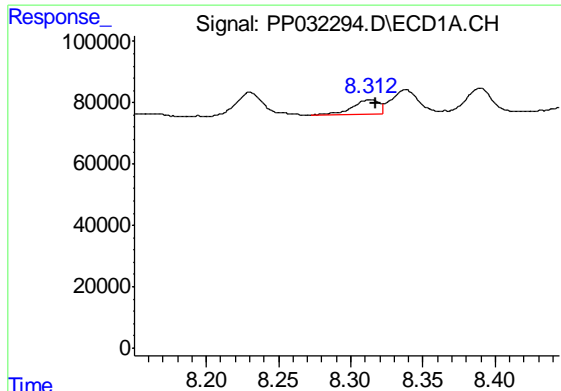
#29 AR-1254-4

R.T.: 0.000 min  
 Exp R.T. : 7.890 min  
 Response: 0  
 Conc: N.D.



#29 AR-1254-4

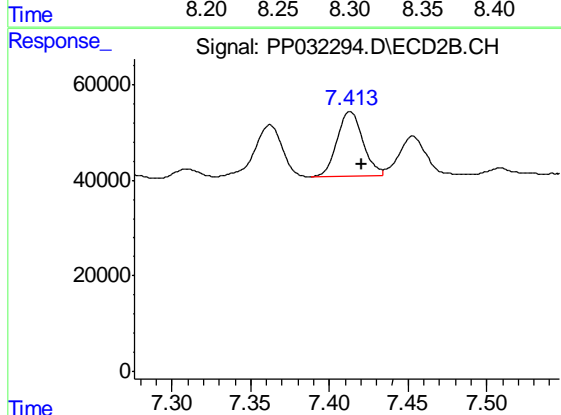
R.T.: 6.988 min  
 Delta R.T.: -0.004 min  
 Response: 29434  
 Conc: 21.30 ng/ml



#30 AR-1254-5

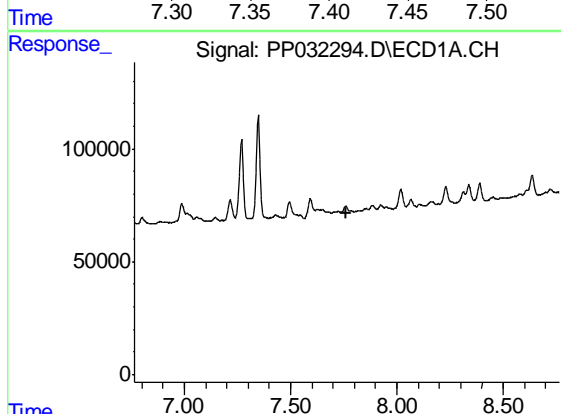
R.T.: 8.313 min  
 Delta R.T.: -0.005 min  
 Response: 58755  
 Conc: 34.28 ng/ml

Instrument :  
 ECD\_R  
 ClientSampled :  
 S3-02-A



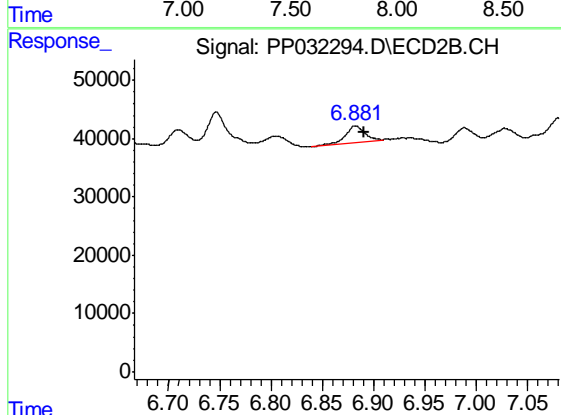
#30 AR-1254-5

R.T.: 7.413 min  
 Delta R.T.: -0.007 min  
 Response: 157799  
 Conc: 66.33 ng/ml



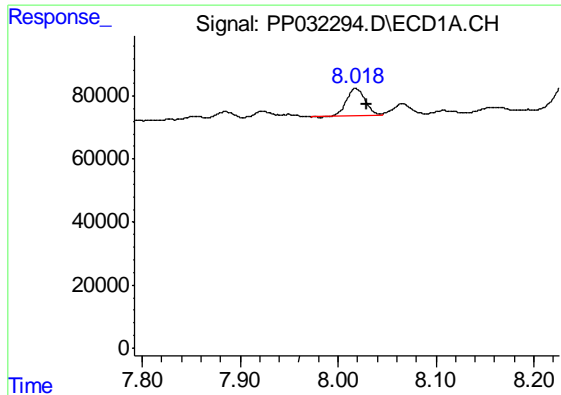
#31 AR-1260-1

R.T.: 0.000 min  
 Exp R.T. : 7.765 min  
 Response: 0  
 Conc: N.D.



#31 AR-1260-1

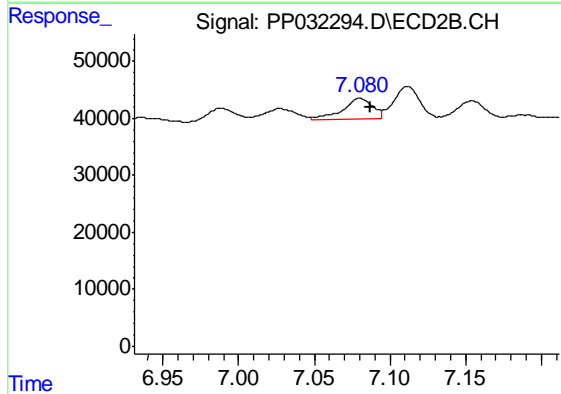
R.T.: 6.882 min  
 Delta R.T.: -0.008 min  
 Response: 39556  
 Conc: 20.86 ng/ml



#32 AR-1260-2

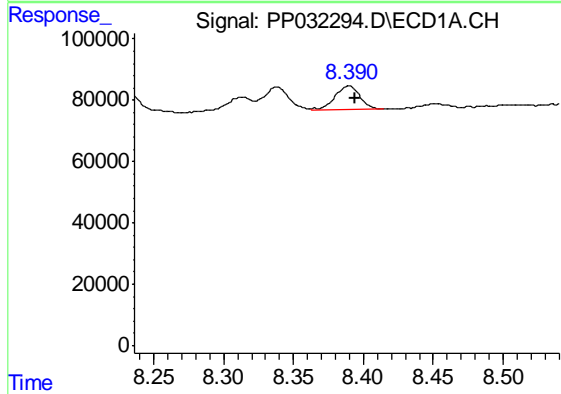
R.T.: 8.018 min  
 Delta R.T.: -0.011 min  
 Response: 114405  
 Conc: 55.68 ng/ml

Instrument :  
 ECD\_R  
 ClientSampleId :  
 S3-02-A



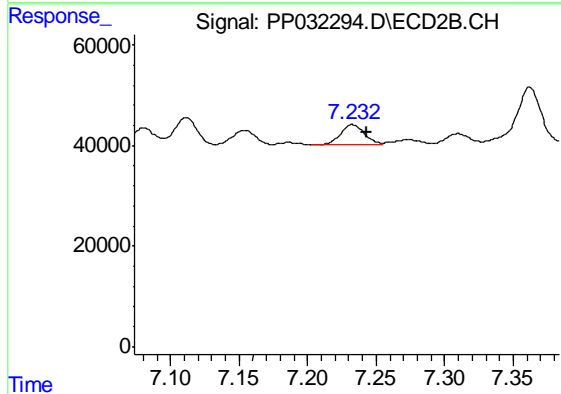
#32 AR-1260-2

R.T.: 7.080 min  
 Delta R.T.: -0.007 min  
 Response: 51954  
 Conc: 23.88 ng/ml



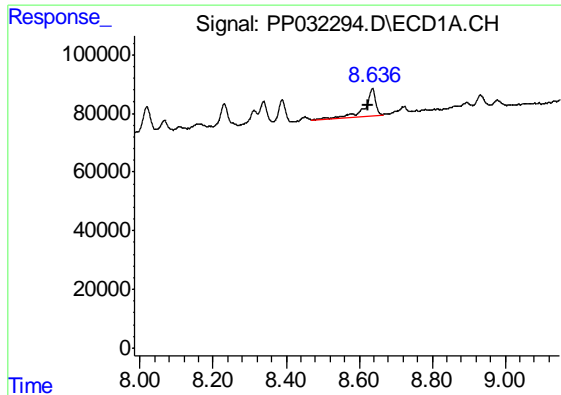
#33 AR-1260-3

R.T.: 8.390 min  
 Delta R.T.: -0.005 min  
 Response: 98481  
 Conc: 56.44 ng/ml



#33 AR-1260-3

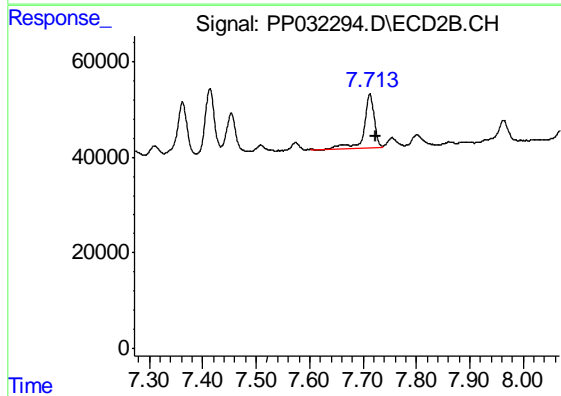
R.T.: 7.233 min  
 Delta R.T.: -0.010 min  
 Response: 47161  
 Conc: 22.20 ng/ml



#34 AR-1260-4

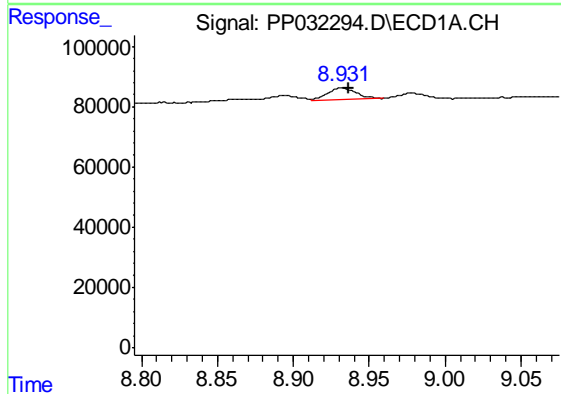
R.T.: 8.637 min  
 Delta R.T.: 0.014 min  
 Response: 194795  
 Conc: 108.10 ng/ml

Instrument :  
 ECD\_R  
 ClientSampleId :  
 S3-02-A



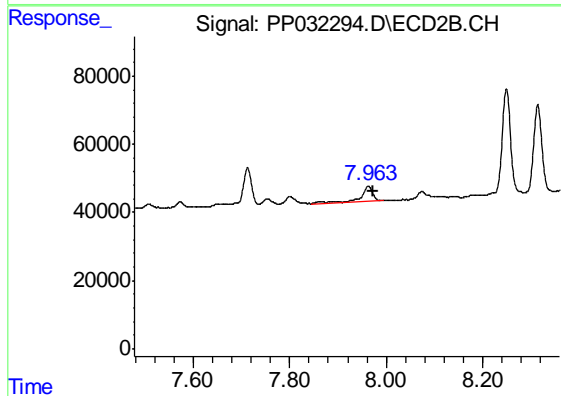
#34 AR-1260-4

R.T.: 7.713 min  
 Delta R.T.: -0.012 min  
 Response: 146260  
 Conc: 82.33 ng/ml



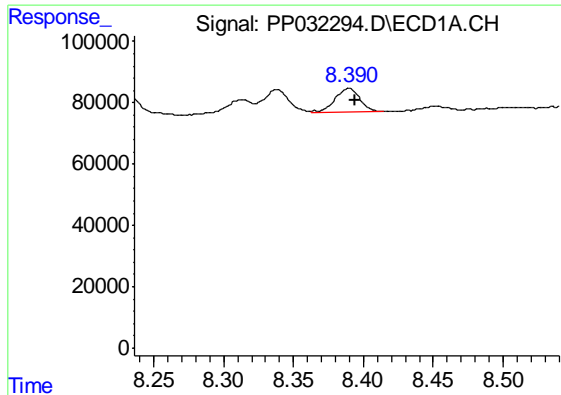
#35 AR-1260-5

R.T.: 8.932 min  
 Delta R.T.: -0.005 min  
 Response: 49985  
 Conc: 13.90 ng/ml



#35 AR-1260-5

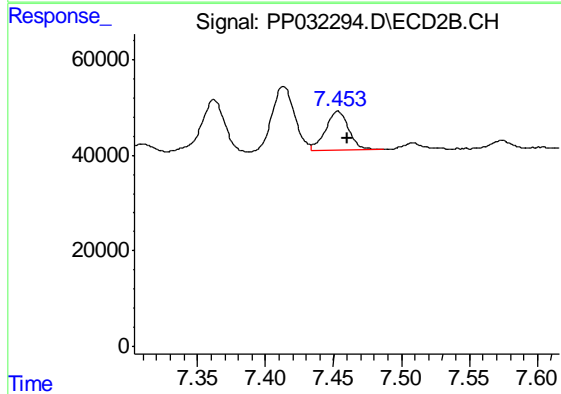
R.T.: 7.963 min  
 Delta R.T.: -0.009 min  
 Response: 73562  
 Conc: 19.23 ng/ml



#36 AR-1262-1

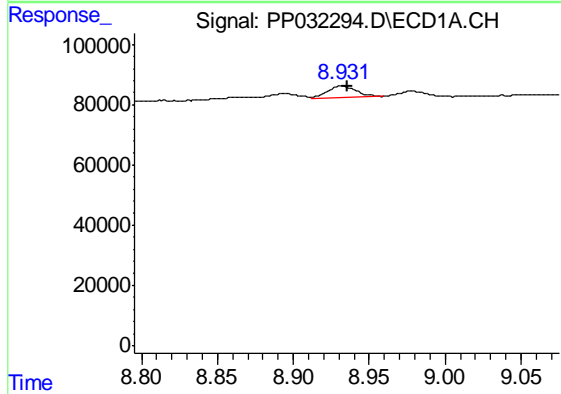
R.T.: 8.390 min  
 Delta R.T.: -0.004 min  
 Response: 98481  
 Conc: 36.50 ng/ml

Instrument :  
 ECD\_R  
 ClientSampleId :  
 S3-02-A



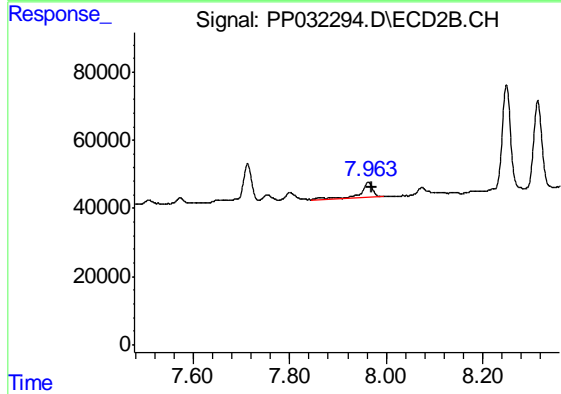
#36 AR-1262-1

R.T.: 7.453 min  
 Delta R.T.: -0.007 min  
 Response: 95786  
 Conc: 35.64 ng/ml



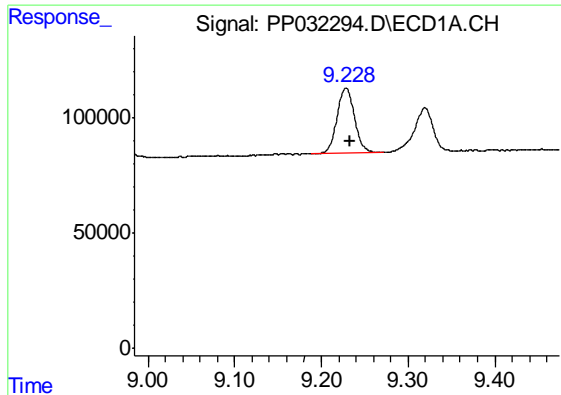
#37 AR-1262-2

R.T.: 8.932 min  
 Delta R.T.: -0.004 min  
 Response: 49985  
 Conc: 12.33 ng/ml



#37 AR-1262-2

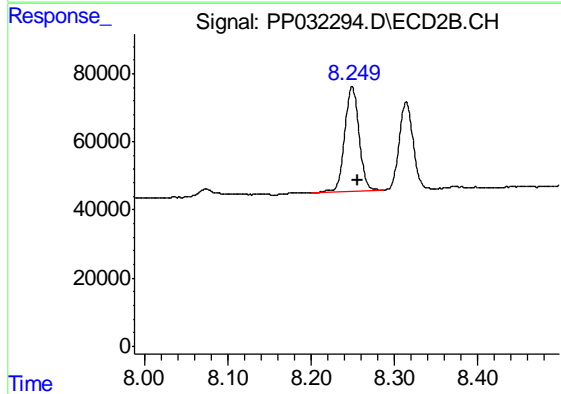
R.T.: 7.963 min  
 Delta R.T.: -0.007 min  
 Response: 73562  
 Conc: 17.64 ng/ml



#38 AR-1262-3

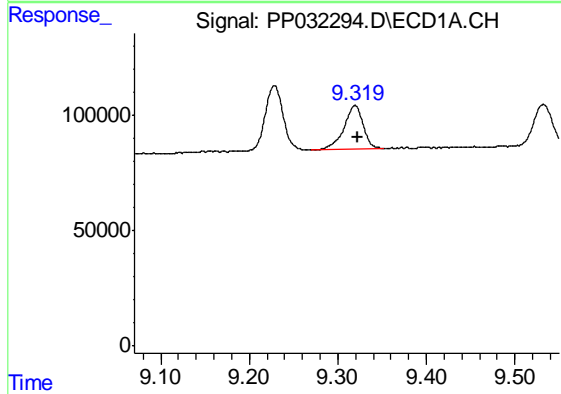
R.T.: 9.228 min  
 Delta R.T.: -0.005 min  
 Response: 392721  
 Conc: 137.05 ng/ml

Instrument :  
 ECD\_R  
 ClientSampled :  
 S3-02-A



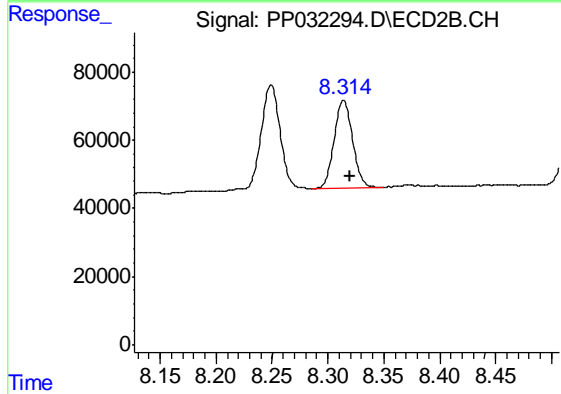
#38 AR-1262-3

R.T.: 8.249 min  
 Delta R.T.: -0.006 min  
 Response: 371035  
 Conc: 204.80 ng/ml



#39 AR-1262-4

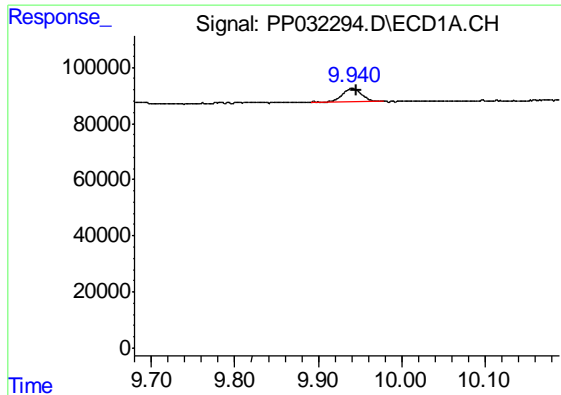
R.T.: 9.320 min  
 Delta R.T.: -0.002 min  
 Response: 286466  
 Conc: 117.51 ng/ml



#39 AR-1262-4

R.T.: 8.314 min  
 Delta R.T.: -0.006 min  
 Response: 300897  
 Conc: 89.44 ng/ml

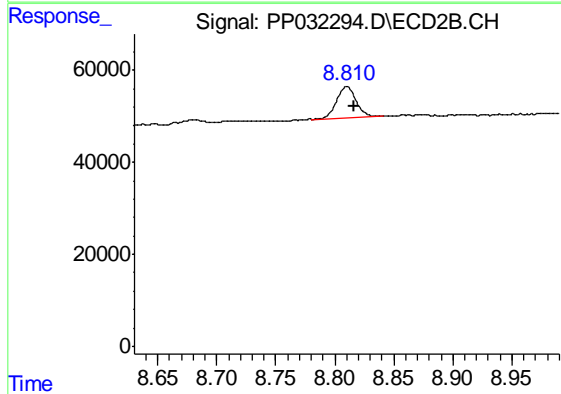




#40 AR-1262-5

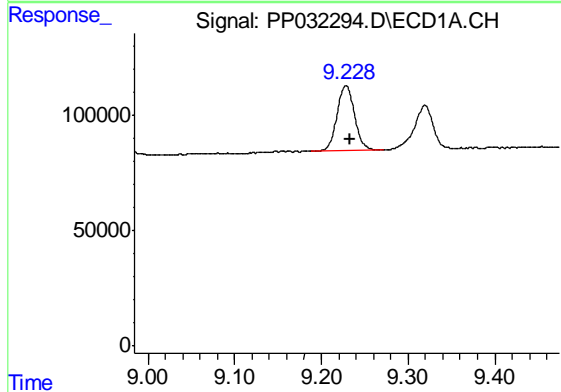
R.T.: 9.941 min  
 Delta R.T.: -0.006 min  
 Response: 73629  
 Conc: 54.31 ng/ml

Instrument :  
 ECD\_R  
 ClientSampled :  
 S3-02-A



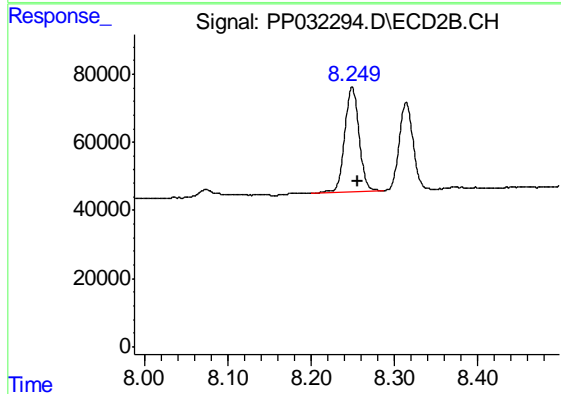
#40 AR-1262-5

R.T.: 8.810 min  
 Delta R.T.: -0.006 min  
 Response: 77700  
 Conc: 59.31 ng/ml



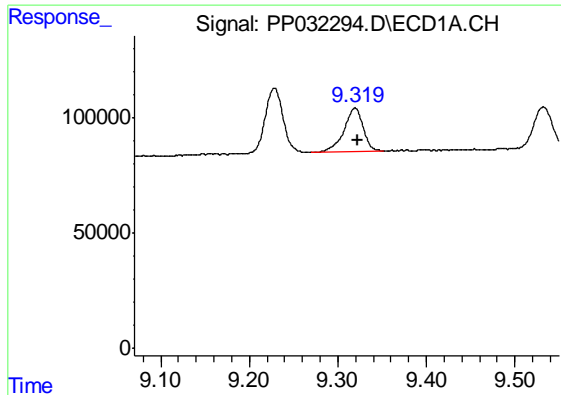
#41 AR-1268-1

R.T.: 9.228 min  
 Delta R.T.: -0.004 min  
 Response: 392721  
 Conc: 75.58 ng/ml



#41 AR-1268-1

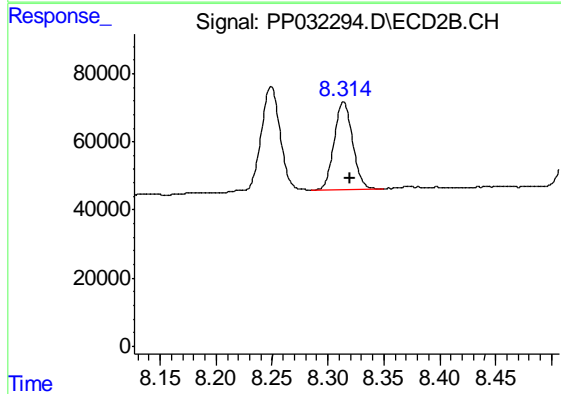
R.T.: 8.249 min  
 Delta R.T.: -0.007 min  
 Response: 371035  
 Conc: 73.62 ng/ml



#42 AR-1268-2

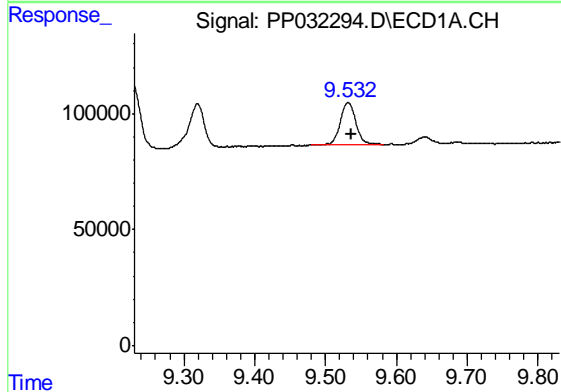
R.T.: 9.320 min  
 Delta R.T.: -0.003 min  
 Response: 286466  
 Conc: 58.85 ng/ml

Instrument :  
 ECD\_R  
 ClientSampled :  
 S3-02-A



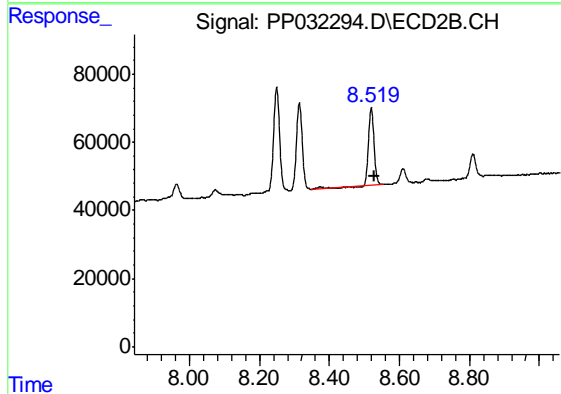
#42 AR-1268-2

R.T.: 8.314 min  
 Delta R.T.: -0.006 min  
 Response: 300897  
 Conc: 58.85 ng/ml



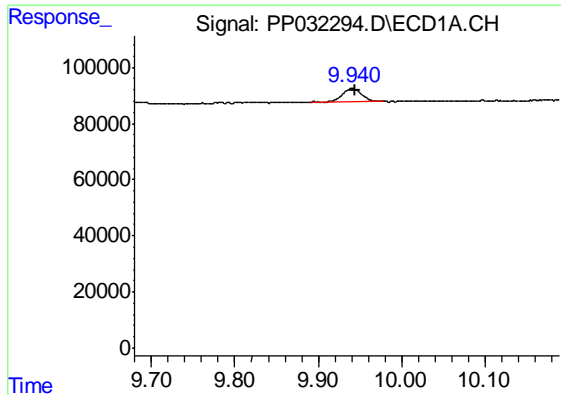
#43 AR-1268-3

R.T.: 9.532 min  
 Delta R.T.: -0.005 min  
 Response: 279709  
 Conc: 64.73 ng/ml



#43 AR-1268-3

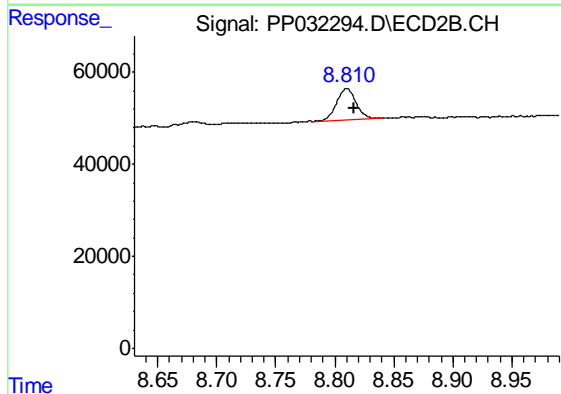
R.T.: 8.520 min  
 Delta R.T.: -0.007 min  
 Response: 253791  
 Conc: 57.56 ng/ml



#44 AR-1268-4

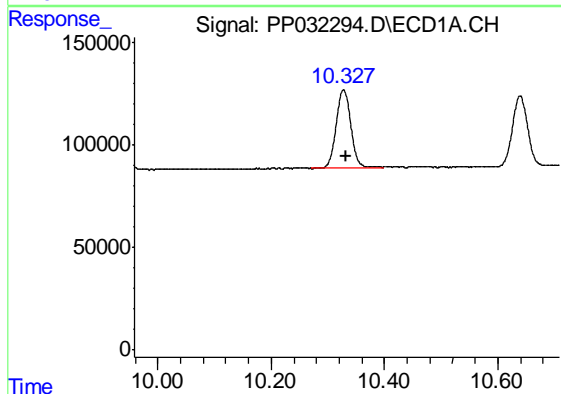
R.T.: 9.941 min  
 Delta R.T.: -0.003 min  
 Response: 73629  
 Conc: 53.00 ng/ml

Instrument :  
 ECD\_R  
 ClientSampled :  
 S3-02-A



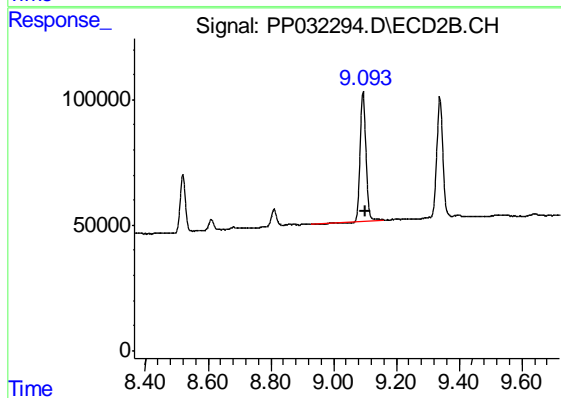
#44 AR-1268-4

R.T.: 8.810 min  
 Delta R.T.: -0.006 min  
 Response: 77700  
 Conc: 53.17 ng/ml



#45 AR-1268-5

R.T.: 10.328 min  
 Delta R.T.: -0.005 min  
 Response: 680331  
 Conc: 56.48 ng/ml



#45 AR-1268-5

R.T.: 9.094 min  
 Delta R.T.: -0.007 min  
 Response: 642950  
 Conc: 50.84 ng/ml