

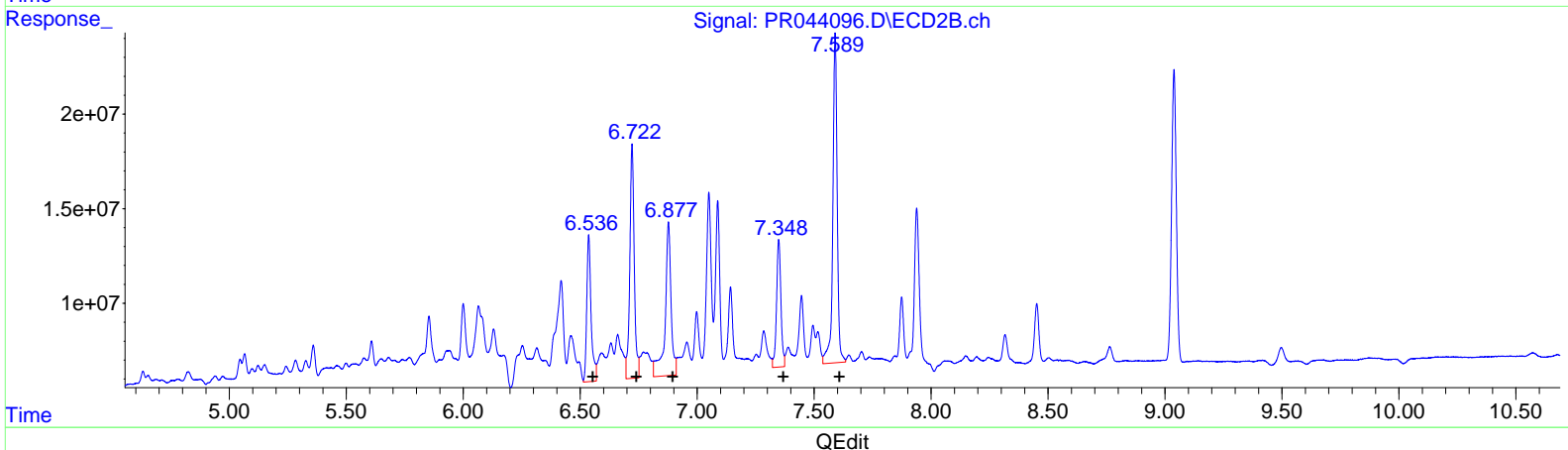
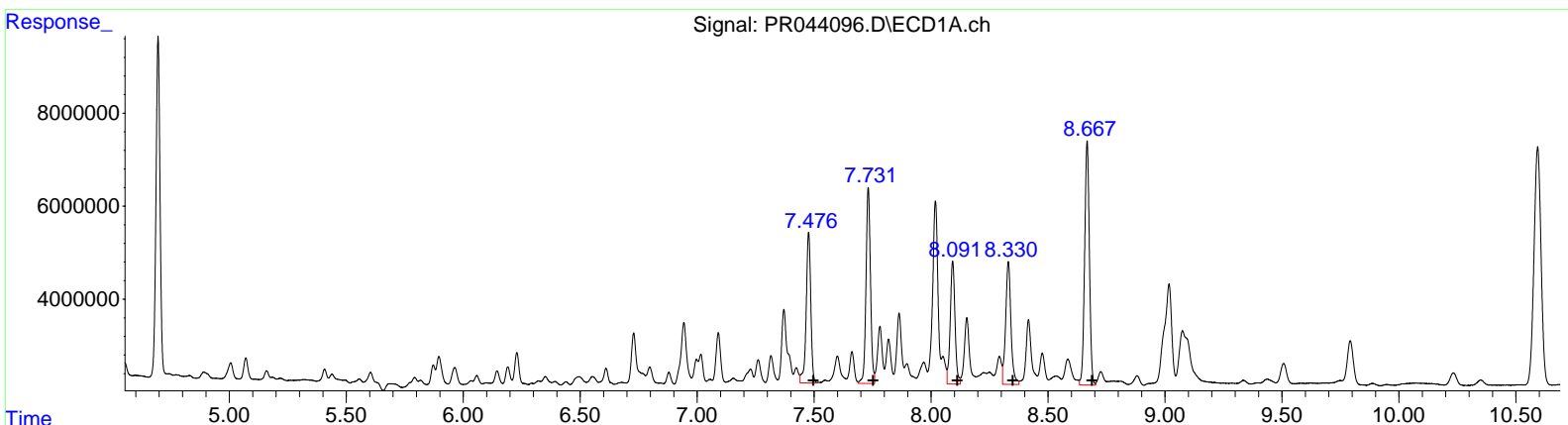
Data Path : Z:\pestpcbsrv\HPCHEM1\ECD_R\Data\PR122319\
 Data File : PR044096.D
 Signal(s) : Signal #1: ECD1A.ch Signal #2: ECD2B.ch
 Acq On : 23 Dec 2019 12:37
 Operator : SM\AJ
 Sample : K6322-12
 Misc :
 ALS Vial : 22 Sample Multiplier: 1

Instrument :
 ECD_R
ClientSampled :
 C0BT7

Manual Integrations
APPROVED
 mohammad
 12/31/2019 9:11:48 AM

Integration File signal 1: autoint1.e
 Integration File signal 2: autoint2.e
 Quant Time: Dec 24 02:48:11 2019
 Quant Method : Z:\pestpcbsrv\HPCHEM1\ECD_R\Method\PR121519CLP.M
 Quant Title : GC EXTRACTABLES
 QLast Update : Mon Dec 16 06:15:17 2019
 Response via : Initial Calibration
 Integrator: ChemStation

Volume Inj. : 1 µl
 Signal #1 Phase : ZB MR1 Signal #2 Phase: ZB MR2
 Signal #1 Info : 30Mx0.32mmx 0.5µm Signal #2 Info : 30M x 0.32mm x 0.25µm



(31) AR-1260-1 (L7)

R.T.	Response	Conc
7.48	44041921	190.52
7.73	55845546	195.72
8.09	37608628	167.49
8.33	41786906	161.38
8.67	74190079	132.82

(31) AR-1260-1 #2 (L7)

R.T.	Response	Conc
6.54	100258927	183.46
6.72	163762697	204.06
6.88	143750832	215.24
7.35	87619463	156.08
7.59	227121198	134.92

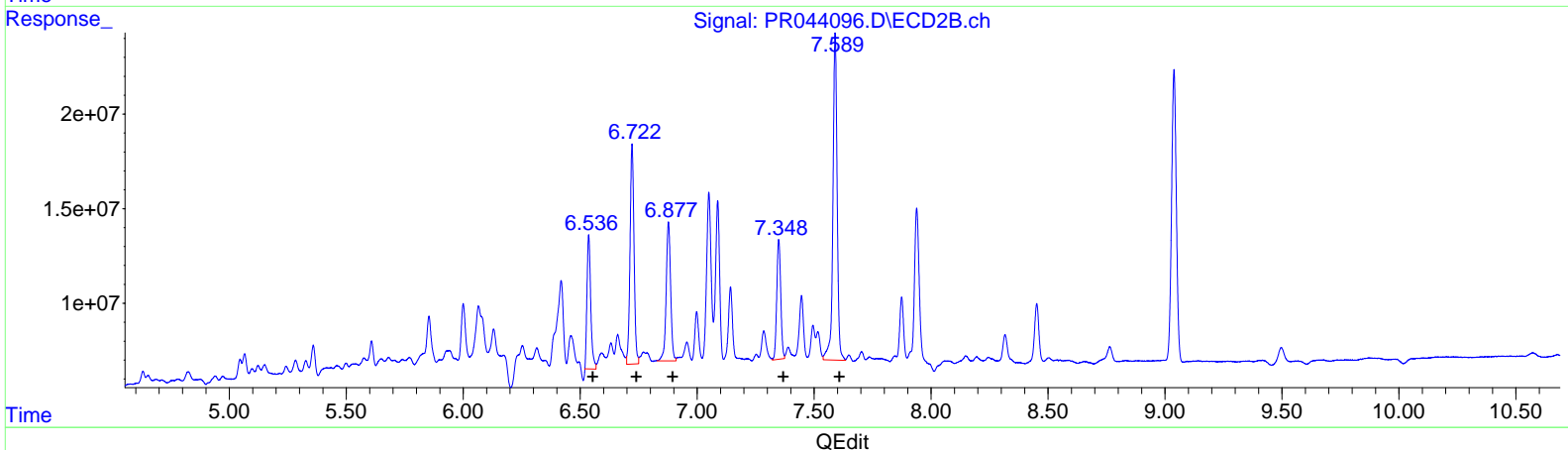
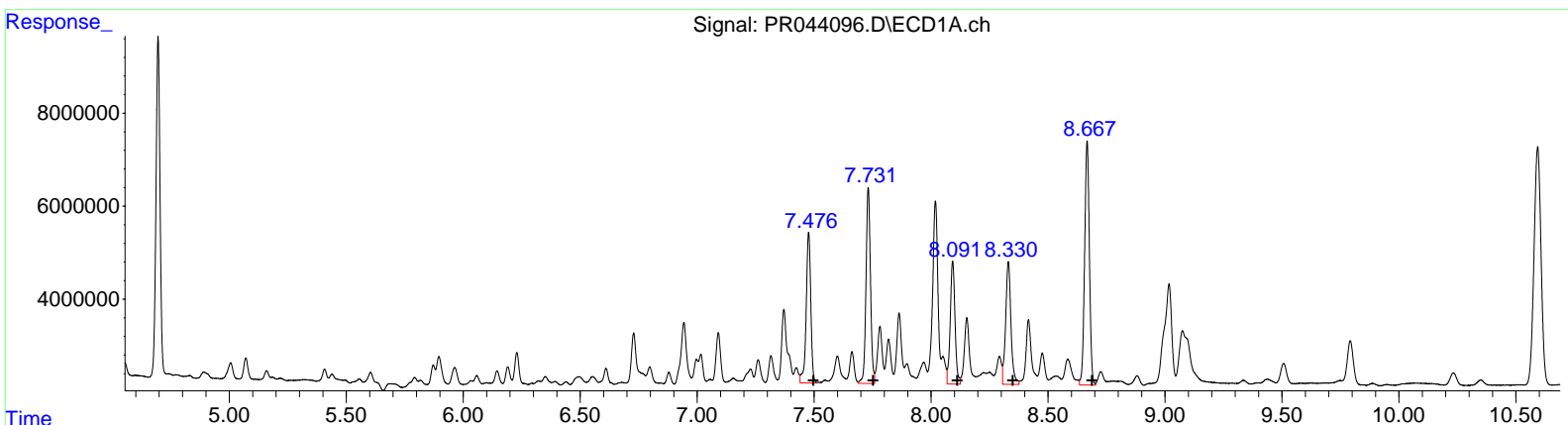
Data Path : Z:\pestpcbsrv\HPCHEM1\ECD_R\Data\PR122319\
 Data File : PR044096.D
 Signal(s) : Signal #1: ECD1A.ch Signal #2: ECD2B.ch
 Acq On : 23 Dec 2019 12:37
 Operator : SM\AJ
 Sample : K6322-12
 Misc :
 ALS Vial : 22 Sample Multiplier: 1

Instrument :
 ECD_R
ClientSampled :
 C0BT7

Manual Integrations
APPROVED
 mohammad
 12/31/2019 9:11:48 AM

Integration File signal 1: autoint1.e
 Integration File signal 2: autoint2.e
 Quant Time: Dec 24 02:48:11 2019
 Quant Method : Z:\pestpcbsrv\HPCHEM1\ECD_R\Method\PR121519CLP.M
 Quant Title : GC EXTRACTABLES
 QLast Update : Mon Dec 16 06:15:17 2019
 Response via : Initial Calibration
 Integrator: ChemStation

Volume Inj. : 1 µl
 Signal #1 Phase : ZB MR1 Signal #2 Phase: ZB MR2
 Signal #1 Info : 30Mx0.32mmx 0.5µm Signal #2 Info : 30M x 0.32mm x 0.25µm



(31) AR-1260-1 (L7)

R.T.	Response	Conc
7.48	44041921	190.52
7.73	55845546	195.72
8.09	37608628	167.49
8.33	41786906	161.38
8.67	74190079	132.82

(31) AR-1260-1 #2 (L7)

R.T.	Response	Conc
6.54	79935857	146.27
6.72	137986002	171.94
6.88	97561862	146.08
7.35	74632944	132.95
7.59	218508414	129.80

Data Path : Z:\pestpcbsrv\HPCHEM1\ECD_R\Data\PR122319\
 Data File : PR044096.D
 Signal(s) : Signal #1: ECD1A.ch Signal #2: ECD2B.ch
 Acq On : 23 Dec 2019 12:37
 Operator : SM\AJ
 Sample : K6322-12
 Misc :
 ALS Vial : 22 Sample Multiplier: 1

Instrument :
 ECD_R
 Client Sampled :
 C0BT7

Integration File signal 1: autoint1.e
 Integration File signal 2: autoint2.e
 Quant Time: Dec 24 02:48:11 2019
 Quant Method : Z:\pestpcbsrv\HPCHEM1\ECD_R\Method\PR121519CLP.M
 Quant Title : GC EXTRACTABLES
 QLast Update : Mon Dec 16 06:15:17 2019
 Response via : Initial Calibration
 Integrator: ChemStation

Manual Integrations
 APPROVED

mohammad

12/31/2019 9:11:48 AM

Volume Inj. : 1 µl
 Signal #1 Phase : ZB MR1 Signal #2 Phase: ZB MR2
 Signal #1 Info : 30Mx0.32mmx 0.5µm Signal #2 Info : 30M x 0.32mm x 0.25µm

Compound	RT#1	RT#2	Resp#1	Resp#2	ng/ml	ng/ml
----------	------	------	--------	--------	-------	-------

System Monitoring Compounds

1) SA Tetrachlo...	4.696	3.955	88480310	235.3E6	22.137	21.318
2) SA Decachlor...	10.593	9.039	107.4E6	219.2E6	22.504	21.730

Target Compounds

31) L7 AR-1260-1	7.477	6.536	44041921	79935857	190.520	146.270m
32) L7 AR-1260-2	7.731	6.722	55845546	138.0E6	195.722	171.937m
33) L7 AR-1260-3	8.092	6.877	37608628	97561862	167.491	146.082m
34) L7 AR-1260-4	8.330	7.348	41786906	74632944	161.379	132.950m
35) L7 AR-1260-5	8.667	7.589	74190079	218.5E6	132.824	129.803m

AJ
 12/30/19

(f)=RT Delta > 1/2 Window (#)=Amounts differ by > 25% (m)=manual int.