

Data Path : Z:\pestpcbsrv\HPCHEM1\ECD_R\Data\PR122324\
 Data File : PR069875.D
 Signal(s) : Signal #1: ECD1A.ch Signal #2: ECD2B.ch
 Acq On : 24 Dec 2024 02:53
 Operator : AJ\MA
 Sample : P5323-14
 Misc :
 ALS Vial : 41 Sample Multiplier: 1

Instrument :
 ECD_R
 ClientSampleId :

Integration File signal 1: autoint1.e
 Integration File signal 2: autoint2.e
 Quant Time: Dec 24 06:59:11 2024
 Quant Method : Z:\pestpcbsrv\HPCHEM1\ECD_R\Method\PR122024CLP.M
 Quant Title : GC EXTRACTABLES
 QLast Update : Sat Dec 21 03:09:04 2024
 Response via : Initial Calibration
 Integrator: ChemStation

Volume Inj. : 1 µl
 Signal #1 Phase : ZB MR1 Signal #2 Phase: ZB MR2
 Signal #1 Info : 30Mx0.32mmx 0.5µm Signal #2 Info : 30M x 0.32mm x 0.25µm

Compound	RT#1	RT#2	Resp#1	Resp#2	ng/ml	ng/ml
System Monitoring Compounds						
1) SA Tetrachlo...	3.630	2.961	16840944	96759955	16.207	17.237
2) SA Decachlor...	9.520	8.234	9080512	57289482	17.604	17.071
Target Compounds						
3) L1 AR-1016-1	0.000	4.040f	0	95838	N.D.	0.546 #
4) L1 AR-1016-2	0.000	4.040f	0	95838	N.D.	0.373 #
5) L1 AR-1016-3	0.000	4.323f	0	938507	N.D.	7.005 #
6) L1 AR-1016-4	0.000	4.323	0	938507	N.D.	8.545 #
7) L1 AR-1016-5	0.000	4.534	0	1071204	N.D.	7.960 #
8) L2 AR-1221-1	0.000	3.242f	0	794864	N.D.	12.112 #
9) L2 AR-1221-2	0.000	3.265	0	1321666	N.D.	28.982 #
10) L2 AR-1221-3	0.000	3.318	0	514483	N.D.	3.444 #
11) L3 AR-1232-1	0.000	3.318	0	514483	N.D.	4.279 #
12) L3 AR-1232-2	4.561	4.040f	446709	95838	40.430	0.824 #
13) L3 AR-1232-3	0.000	4.323f	0	938507	N.D.	15.485 #
14) L3 AR-1232-4	0.000	4.323f	0	938507	N.D.	17.280 #
15) L3 AR-1232-5	0.000	4.534	0	1071204	N.D.	19.402 #
16) L4 AR-1242-1	0.000	4.040f	0	95838	N.D.	0.655 #
17) L4 AR-1242-2	0.000	4.040f	0	95838	N.D.	0.447 #
18) L4 AR-1242-3	0.000	4.323f	0	938507	N.D.	8.314 #
19) L4 AR-1242-4	0.000	4.323f	0	938507	N.D.	8.631 #
20) L4 AR-1242-5	5.756f	4.919	393278	3533536	20.105	26.545 #
21) L5 AR-1248-1	0.000	4.040f	0	95838	N.D.	0.880 #
22) L5 AR-1248-2	0.000	4.323	0	938507	N.D.	6.025 #
23) L5 AR-1248-3	0.000	4.323f	0	938507	N.D.	5.928 #
24) L5 AR-1248-4	5.756	4.534	393278	1071204	11.927	5.826 #
25) L5 AR-1248-5	0.000	4.942	0	1529324	N.D.	8.697 #
26) L6 AR-1254-1	5.756	4.919	393278	3533536	11.158	13.397
27) L6 AR-1254-2	5.994	5.080	629865	4587474	11.725	20.171 #
28) L6 AR-1254-3	6.383	5.523	518920	9228499	9.471	26.415 #
29) L6 AR-1254-4	0.000	5.749	0	1819695	N.D.	8.796 #
30) L6 AR-1254-5	7.152	6.196	3826313	18939441	93.286	63.995 #
31) L7 AR-1260-1	6.565	5.644	1890847	12504280	47.079	53.162
32) L7 AR-1260-2	6.847	5.850	2861255	16465324	64.039	61.348
33) L7 AR-1260-3	7.238	6.008	2390531	13627681	67.505	53.344
34) L7 AR-1260-4	7.481	6.515	3160230	15121894	81.013	69.613
35) L7 AR-1260-5	7.821	6.782	6210592	39699419	88.298	79.468
36) L8 AR-1262-1	7.238	6.240	2390531	14710449	46.839	46.375
37) L8 AR-1262-2	7.821	6.782	6210592	39699419	77.950	71.533
38) L8 AR-1262-3	8.134	7.087	3507419	9066655	64.877	41.111 #
39) L8 AR-1262-4	8.210	7.152	1221965	30931351	28.495	73.972 #
40) L8 AR-1262-5	8.835	7.694	1628558	11331446	63.155	59.950
41) L9 AR-1268-1	8.134	7.087	3507419	9066655	36.164	13.716 #

Data Path : Z:\pestpcbsrv\HPCHEM1\ECD_R\Data\PR122324\
 Data File : PR069875.D
 Signal(s) : Signal #1: ECD1A.ch Signal #2: ECD2B.ch
 Acq On : 24 Dec 2024 02:53
 Operator : AJ\MA
 Sample : P5323-14
 Misc :
 ALS Vial : 41 Sample Multiplier: 1

Instrument :
 ECD_R
 ClientSampleId :

Integration File signal 1: autoint1.e
 Integration File signal 2: autoint2.e
 Quant Time: Dec 24 06:59:11 2024
 Quant Method : Z:\pestpcbsrv\HPCHEM1\ECD_R\Method\PR122024CLP.M
 Quant Title : GC EXTRACTABLES
 QLast Update : Sat Dec 21 03:09:04 2024
 Response via : Initial Calibration
 Integrator: ChemStation

Volume Inj. : 1 µl
 Signal #1 Phase : ZB MR1 Signal #2 Phase: ZB MR2
 Signal #1 Info : 30Mx0.32mmx 0.5µm Signal #2 Info : 30M x 0.32mm x 0.25µm

	Compound	RT#1	RT#2	Resp#1	Resp#2	ng/ml	ng/ml
42)	L9 AR-1268-2	8.210	7.152	1221965	30931351	13.956	50.730 #
43)	L9 AR-1268-3	0.000	7.380	0	654253	N.D.	1.258 #
44)	L9 AR-1268-4	8.835	7.694	1628558	11331446	55.894	52.886
45)	L9 AR-1268-5	9.213	7.989	555076	2497330	2.507	1.545 #

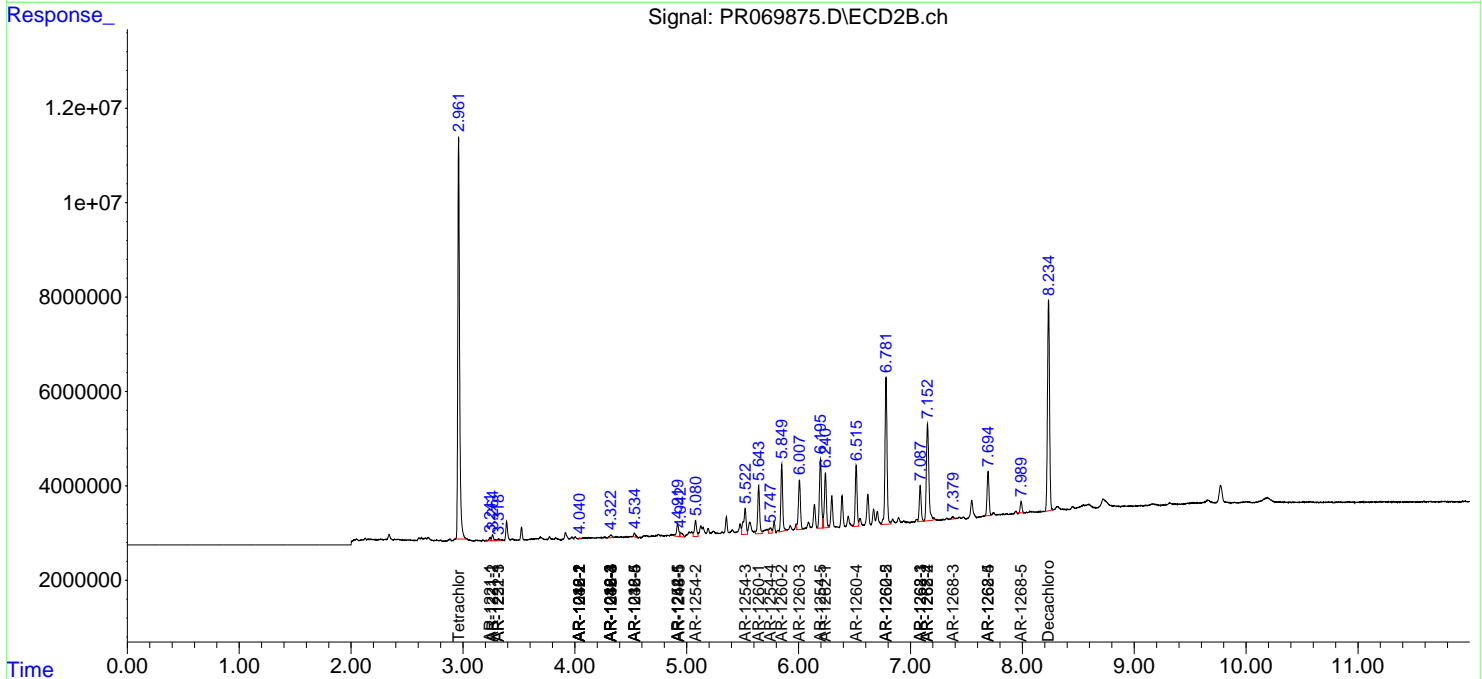
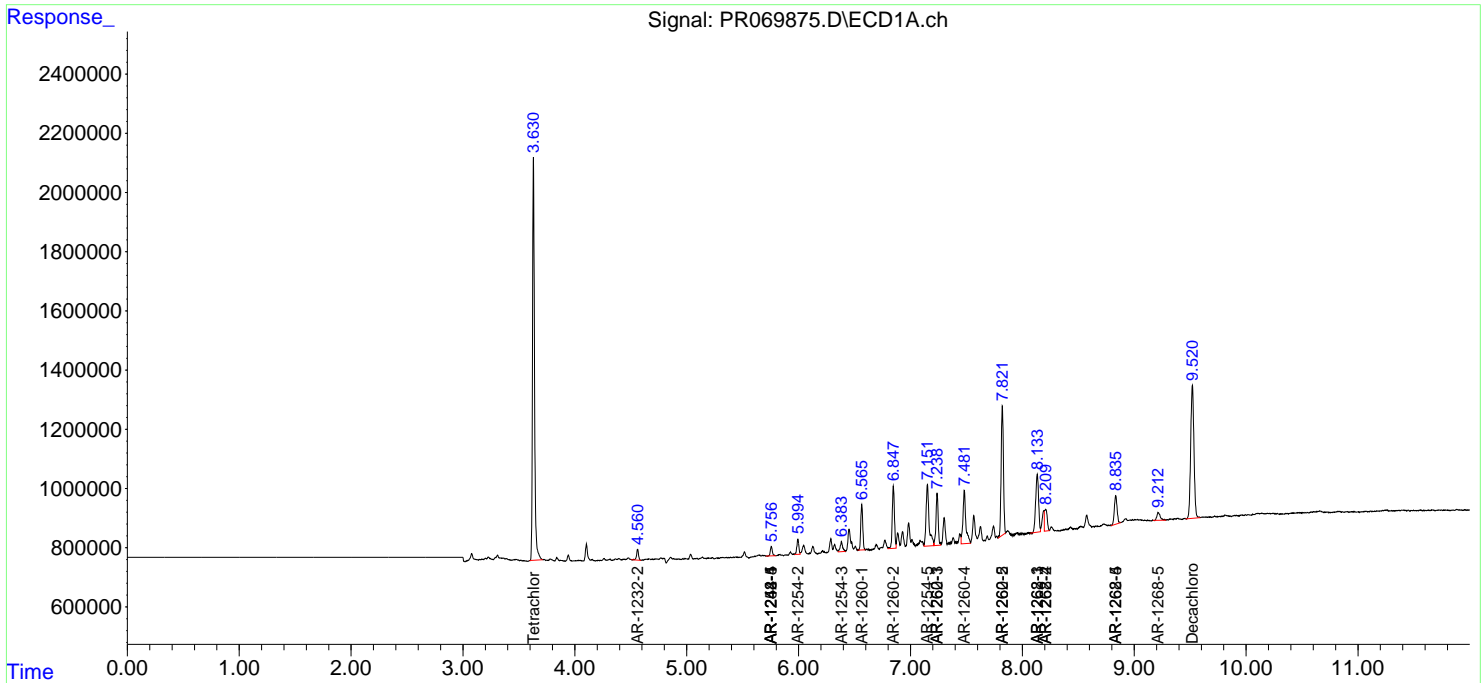
(f)=RT Delta > 1/2 Window (#)=Amounts differ by > 25% (m)=manual int.

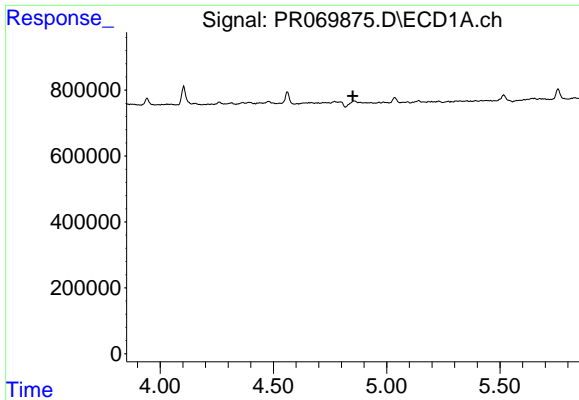
Data Path : Z:\pestpcbsrv\HPCHEM1\ECD_R\Data\PR122324\
 Data File : PR069875.D
 Signal(s) : Signal #1: ECD1A.ch Signal #2: ECD2B.ch
 Acq On : 24 Dec 2024 02:53
 Operator : AJ\MA
 Sample : P5323-14
 Misc :
 ALS Vial : 41 Sample Multiplier: 1

Instrument :
 ECD_R
 ClientSampleId :

Integration File signal 1: autoint1.e
 Integration File signal 2: autoint2.e
 Quant Time: Dec 24 06:59:11 2024
 Quant Method : Z:\pestpcbsrv\HPCHEM1\ECD_R\Method\PR122024CLP.M
 Quant Title : GC EXTRACTABLES
 QLast Update : Sat Dec 21 03:09:04 2024
 Response via : Initial Calibration
 Integrator: ChemStation

Volume Inj. : 1 µl
 Signal #1 Phase : ZB MR1 Signal #2 Phase: ZB MR2
 Signal #1 Info : 30Mx0.32mmx 0.5µm Signal #2 Info : 30M x 0.32mm x 0.25µm

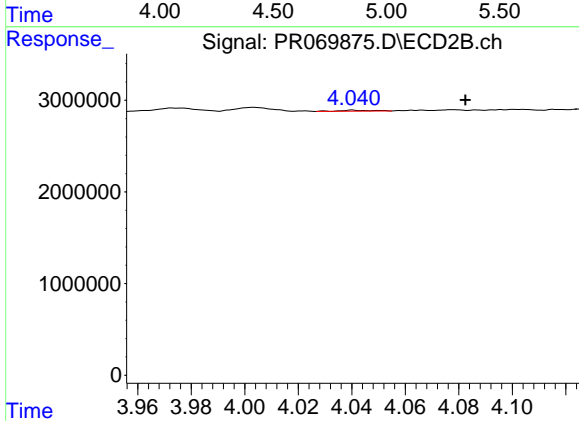




#3 AR-1016-1

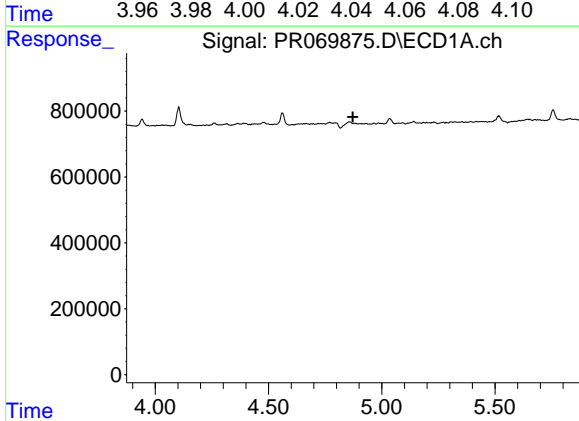
R.T.: 0.000 min
 Exp R.T.: 4.851 min
 Response: 0
 Conc: N.D.

Instrument :
 ECD_R
 ClientSampleId :



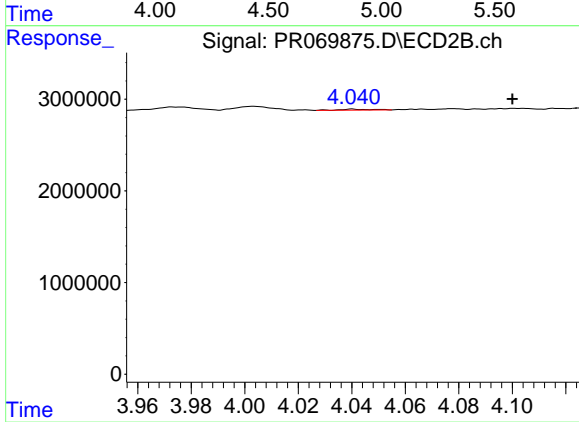
#3 AR-1016-1

R.T.: 4.040 min
 Delta R.T.: -0.042 min
 Response: 95838
 Conc: 0.55 ng/ml



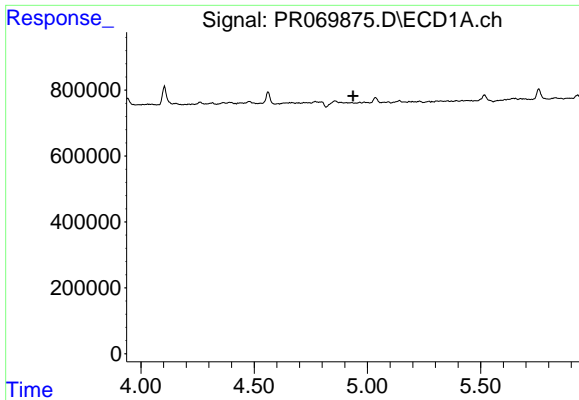
#4 AR-1016-2

R.T.: 0.000 min
 Exp R.T.: 4.872 min
 Response: 0
 Conc: N.D.



#4 AR-1016-2

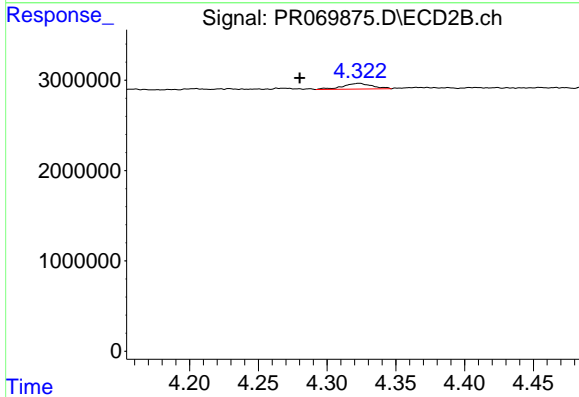
R.T.: 4.040 min
 Delta R.T.: -0.060 min
 Response: 95838
 Conc: 0.37 ng/ml



#5 AR-1016-3

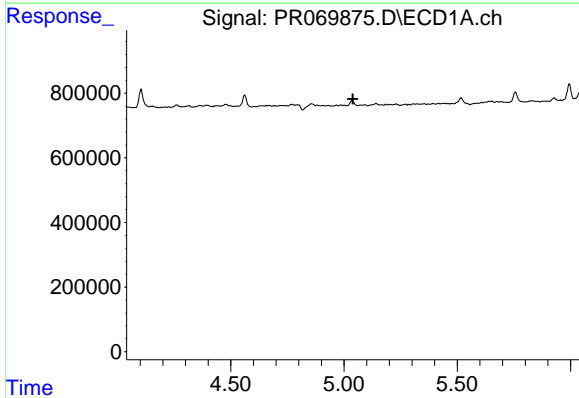
R.T.: 0.000 min
 Exp R.T. : 4.936 min
 Response: 0
 Conc: N.D.

Instrument :
 ECD_R
 ClientSampleId :



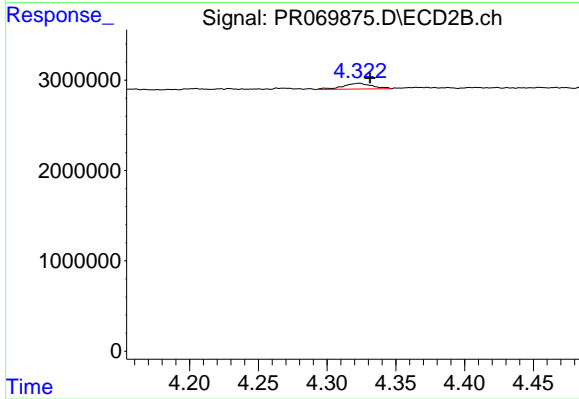
#5 AR-1016-3

R.T.: 4.323 min
 Delta R.T.: 0.043 min
 Response: 938507
 Conc: 7.00 ng/ml



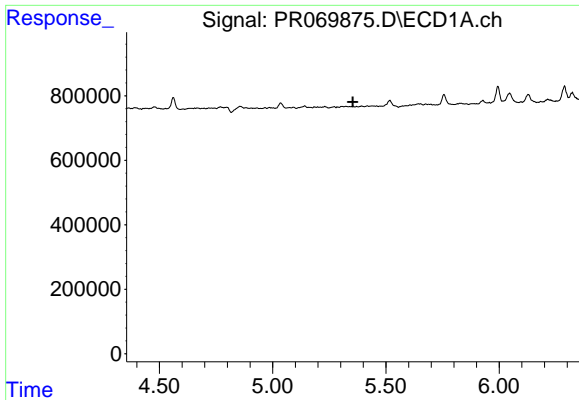
#6 AR-1016-4

R.T.: 0.000 min
 Exp R.T. : 5.039 min
 Response: 0
 Conc: N.D.



#6 AR-1016-4

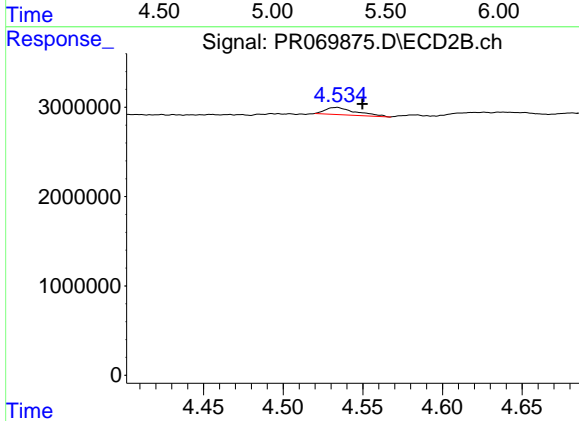
R.T.: 4.323 min
 Delta R.T.: -0.008 min
 Response: 938507
 Conc: 8.54 ng/ml



#7 AR-1016-5

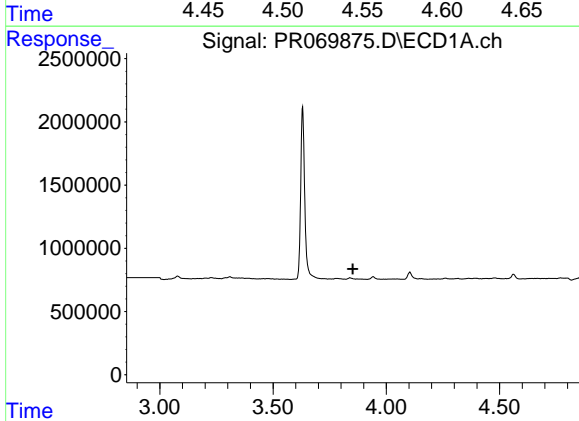
R.T.: 0.000 min
 Exp R.T.: 5.354 min
 Response: 0
 Conc: N.D.

Instrument :
 ECD_R
 ClientSampleId :



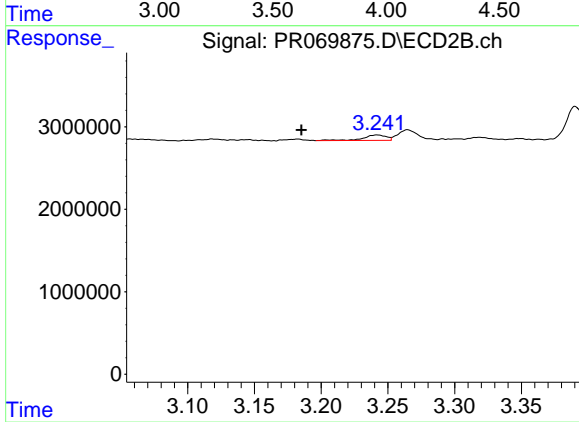
#7 AR-1016-5

R.T.: 4.534 min
 Delta R.T.: -0.016 min
 Response: 1071204
 Conc: 7.96 ng/ml



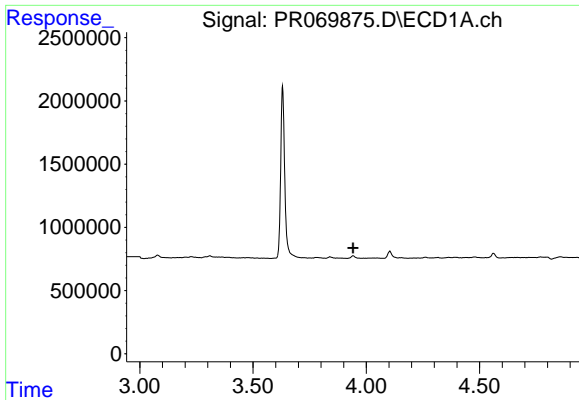
#8 AR-1221-1

R.T.: 0.000 min
 Exp R.T.: 3.853 min
 Response: 0
 Conc: N.D.



#8 AR-1221-1

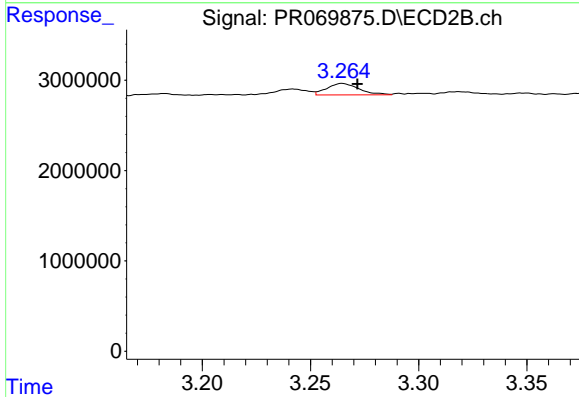
R.T.: 3.242 min
 Delta R.T.: 0.057 min
 Response: 794864
 Conc: 12.11 ng/ml



#9 AR-1221-2

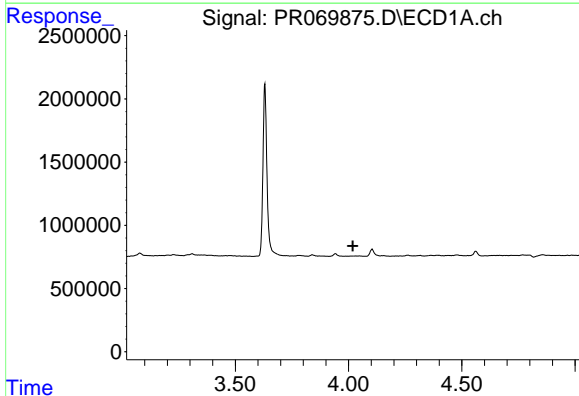
R.T.: 0.000 min
 Exp R.T.: 3.942 min
 Response: 0
 Conc: N.D.

Instrument :
 ECD_R
 ClientSampleId :



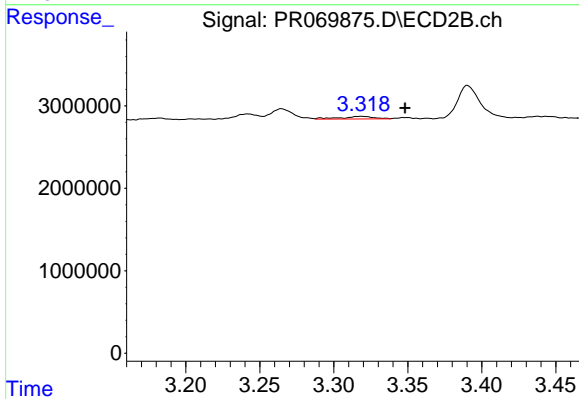
#9 AR-1221-2

R.T.: 3.265 min
 Delta R.T.: -0.007 min
 Response: 1321666
 Conc: 28.98 ng/ml



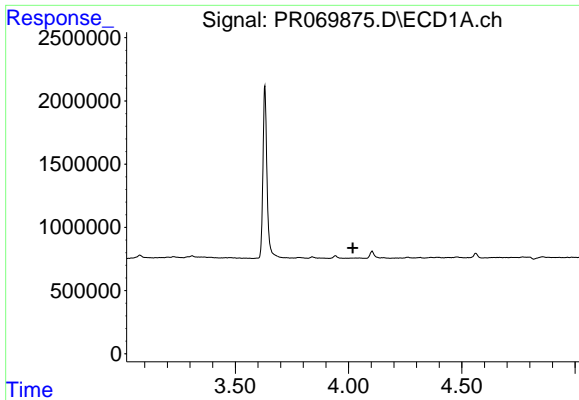
#10 AR-1221-3

R.T.: 0.000 min
 Exp R.T.: 4.019 min
 Response: 0
 Conc: N.D.



#10 AR-1221-3

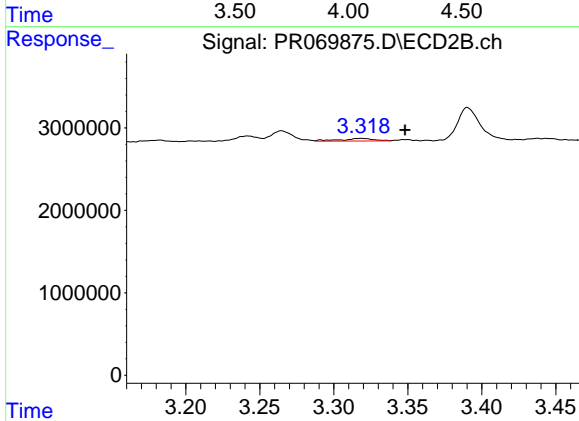
R.T.: 3.318 min
 Delta R.T.: -0.030 min
 Response: 514483
 Conc: 3.44 ng/ml



#11 AR-1232-1

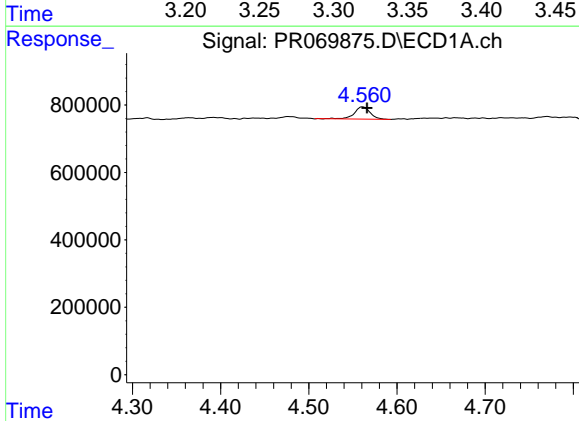
R.T.: 0.000 min
 Exp R.T.: 4.018 min
 Response: 0
 Conc: N.D.

Instrument :
 ECD_R
 ClientSampleId :



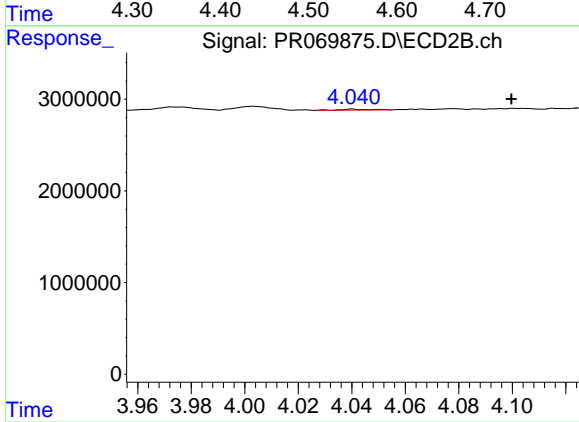
#11 AR-1232-1

R.T.: 3.318 min
 Delta R.T.: -0.030 min
 Response: 514483
 Conc: 4.28 ng/ml



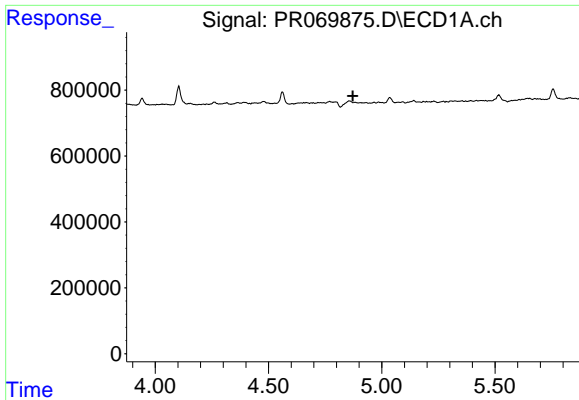
#12 AR-1232-2

R.T.: 4.561 min
 Delta R.T.: -0.005 min
 Response: 446709
 Conc: 40.43 ng/ml



#12 AR-1232-2

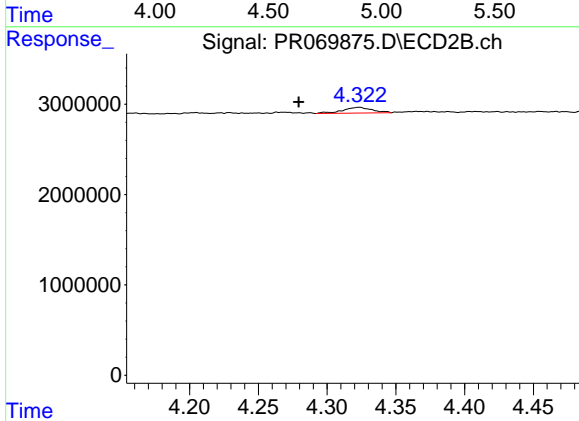
R.T.: 4.040 min
 Delta R.T.: -0.059 min
 Response: 95838
 Conc: 0.82 ng/ml



#13 AR-1232-3

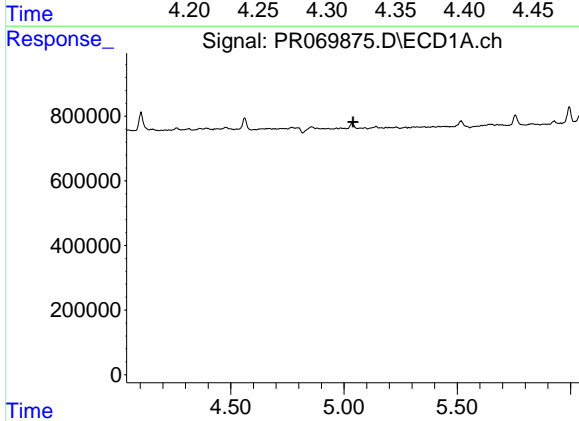
R.T.: 0.000 min
 Exp R.T. : 4.873 min
 Response: 0
 Conc: N.D.

Instrument :
 ECD_R
 ClientSampleId :



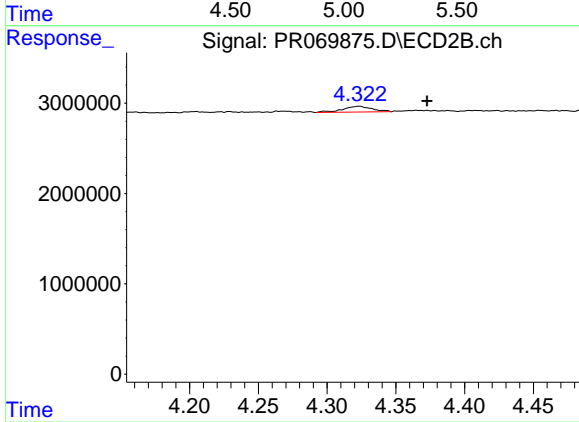
#13 AR-1232-3

R.T.: 4.323 min
 Delta R.T.: 0.044 min
 Response: 938507
 Conc: 15.49 ng/ml



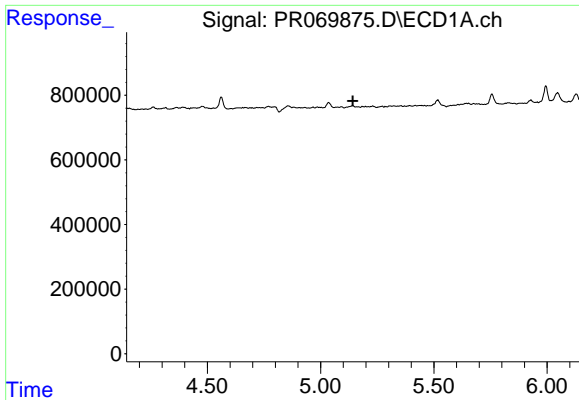
#14 AR-1232-4

R.T.: 0.000 min
 Exp R.T. : 5.040 min
 Response: 0
 Conc: N.D.



#14 AR-1232-4

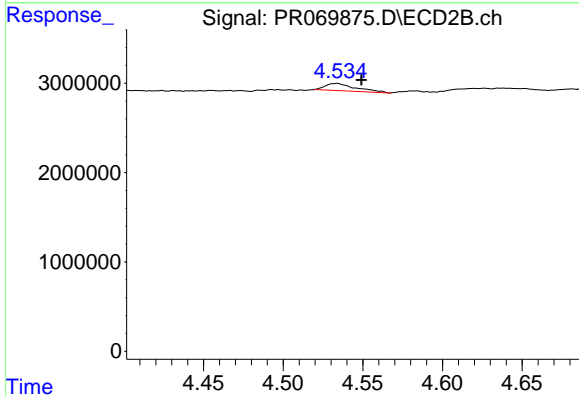
R.T.: 4.323 min
 Delta R.T.: -0.049 min
 Response: 938507
 Conc: 17.28 ng/ml



#15 AR-1232-5

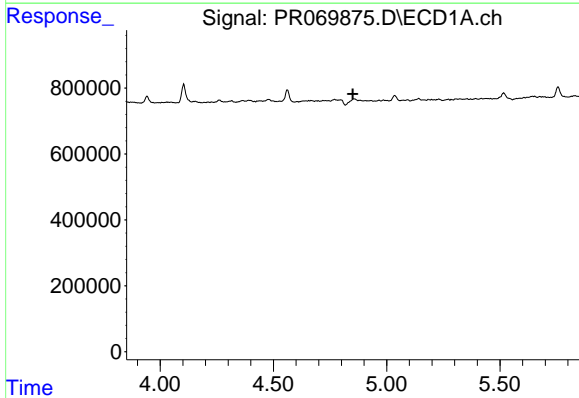
R.T.: 0.000 min
 Exp R.T. : 5.143 min
 Response: 0
 Conc: N.D.

Instrument :
 ECD_R
 ClientSampleId :



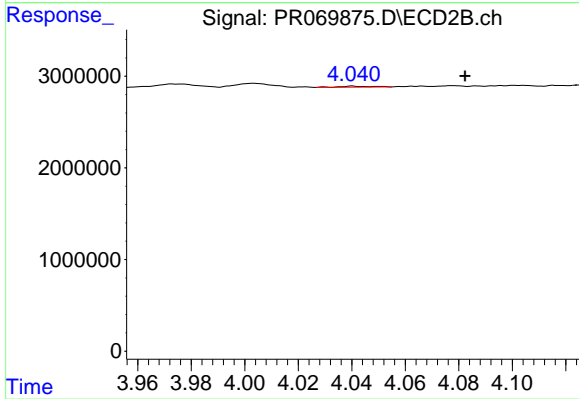
#15 AR-1232-5

R.T.: 4.534 min
 Delta R.T.: -0.016 min
 Response: 1071204
 Conc: 19.40 ng/ml



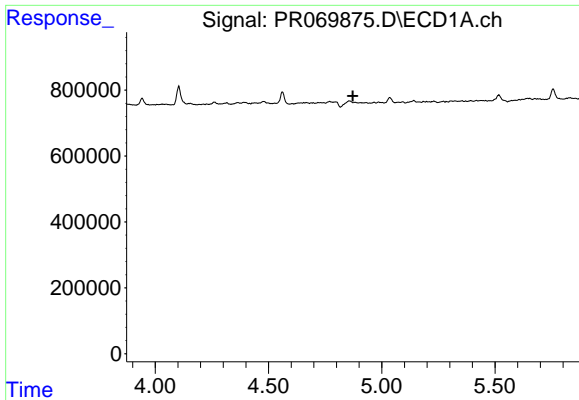
#16 AR-1242-1

R.T.: 0.000 min
 Exp R.T. : 4.851 min
 Response: 0
 Conc: N.D.



#16 AR-1242-1

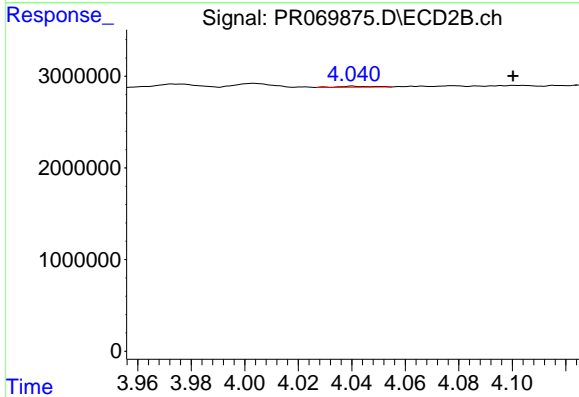
R.T.: 4.040 min
 Delta R.T.: -0.042 min
 Response: 95838
 Conc: 0.65 ng/ml



#17 AR-1242-2

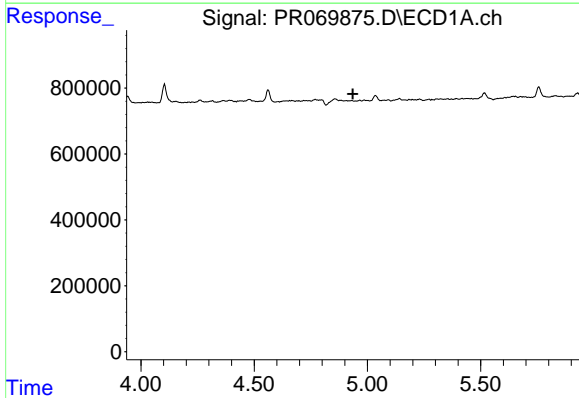
R.T.: 0.000 min
 Exp R.T. : 4.873 min
 Response: 0
 Conc: N.D.

Instrument :
 ECD_R
 ClientSampleId :



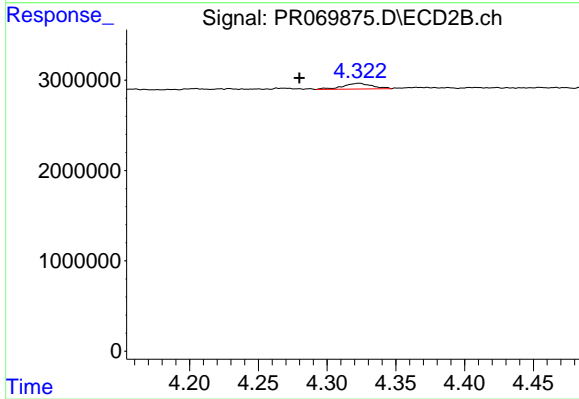
#17 AR-1242-2

R.T.: 4.040 min
 Delta R.T.: -0.060 min
 Response: 95838
 Conc: 0.45 ng/ml



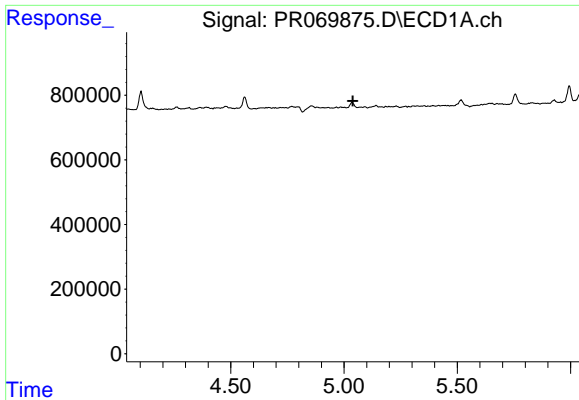
#18 AR-1242-3

R.T.: 0.000 min
 Exp R.T. : 4.936 min
 Response: 0
 Conc: N.D.



#18 AR-1242-3

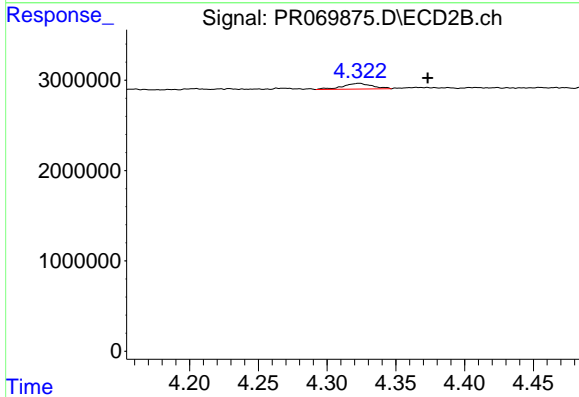
R.T.: 4.323 min
 Delta R.T.: 0.044 min
 Response: 938507
 Conc: 8.31 ng/ml



#19 AR-1242-4

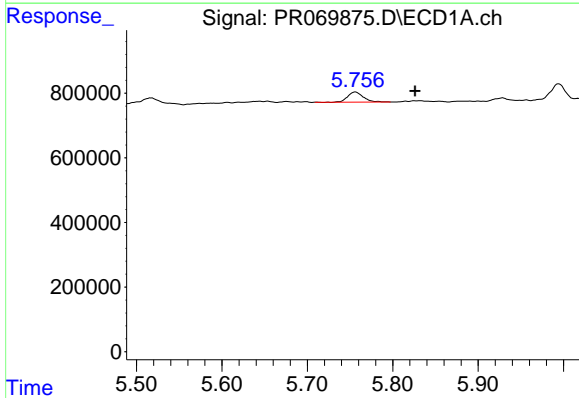
R.T.: 0.000 min
 Exp R.T.: 5.039 min
 Response: 0
 Conc: N.D.

Instrument :
 ECD_R
 ClientSampleId :



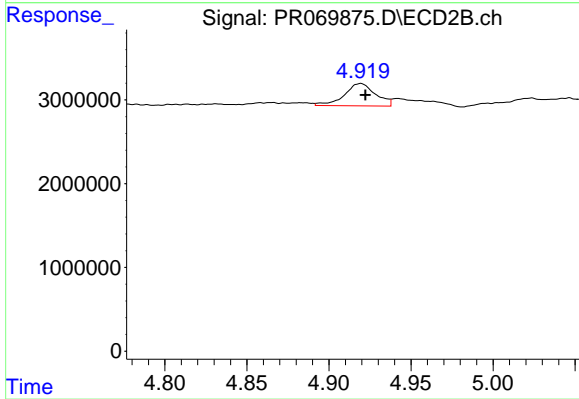
#19 AR-1242-4

R.T.: 4.323 min
 Delta R.T.: -0.050 min
 Response: 938507
 Conc: 8.63 ng/ml



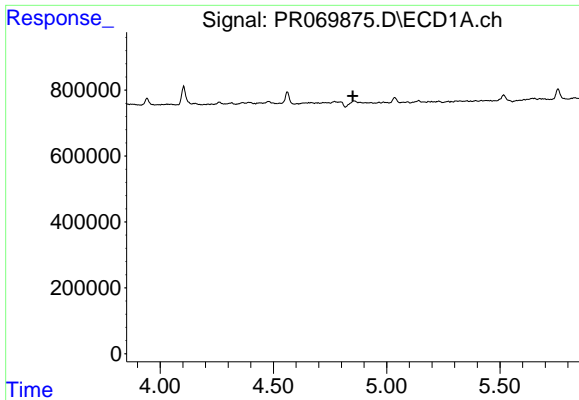
#20 AR-1242-5

R.T.: 5.756 min
 Delta R.T.: -0.070 min
 Response: 393278
 Conc: 20.10 ng/ml



#20 AR-1242-5

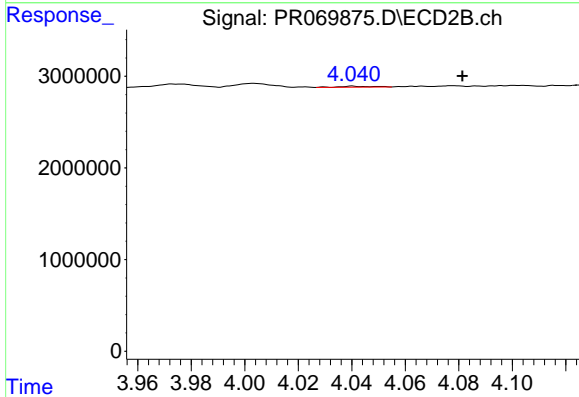
R.T.: 4.919 min
 Delta R.T.: -0.003 min
 Response: 3533536
 Conc: 26.55 ng/ml



#21 AR-1248-1

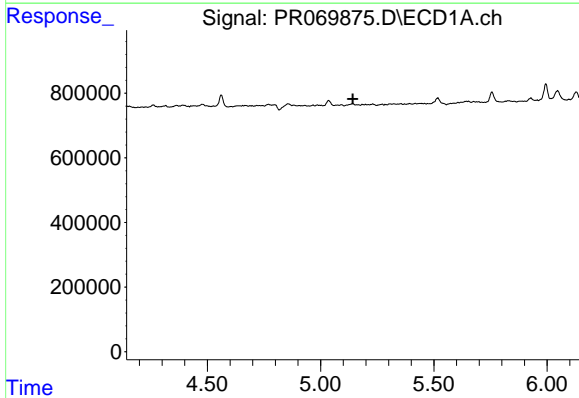
R.T.: 0.000 min
 Exp R.T. : 4.851 min
 Response: 0
 Conc: N.D.

Instrument :
 ECD_R
 ClientSampleId :



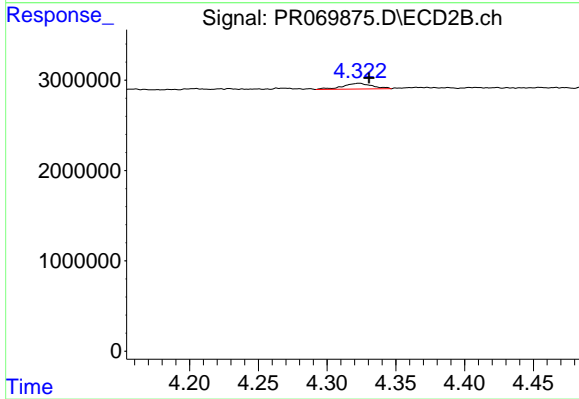
#21 AR-1248-1

R.T.: 4.040 min
 Delta R.T.: -0.041 min
 Response: 95838
 Conc: 0.88 ng/ml



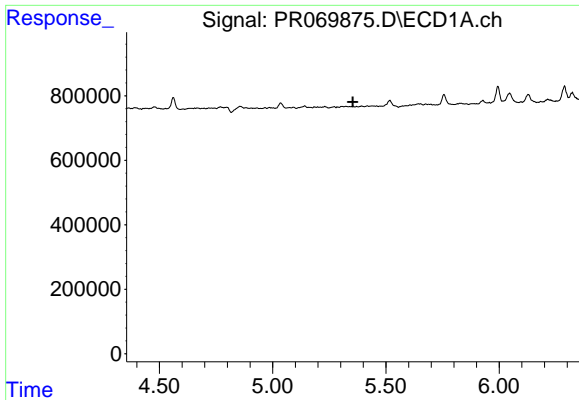
#22 AR-1248-2

R.T.: 0.000 min
 Exp R.T. : 5.142 min
 Response: 0
 Conc: N.D.



#22 AR-1248-2

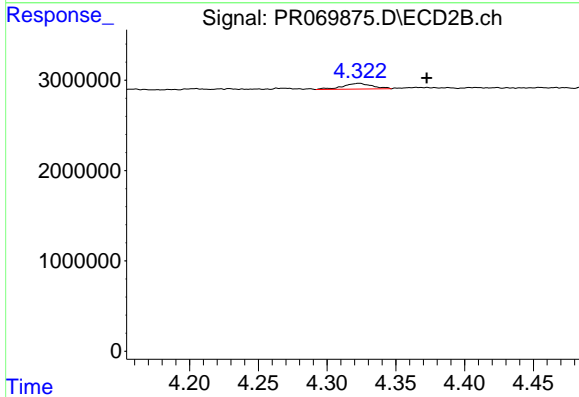
R.T.: 4.323 min
 Delta R.T.: -0.007 min
 Response: 938507
 Conc: 6.02 ng/ml



#23 AR-1248-3

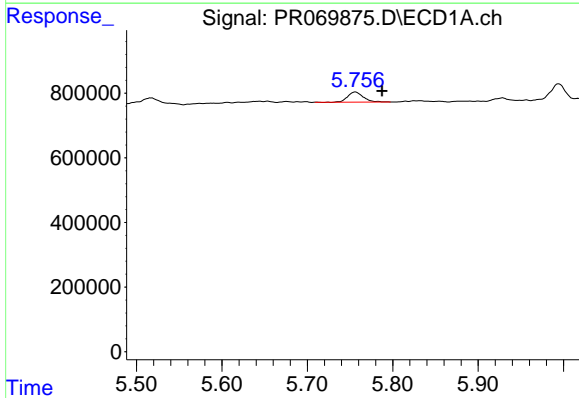
R.T.: 0.000 min
 Exp R.T.: 5.354 min
 Response: 0
 Conc: N.D.

Instrument :
 ECD_R
 ClientSampleId :



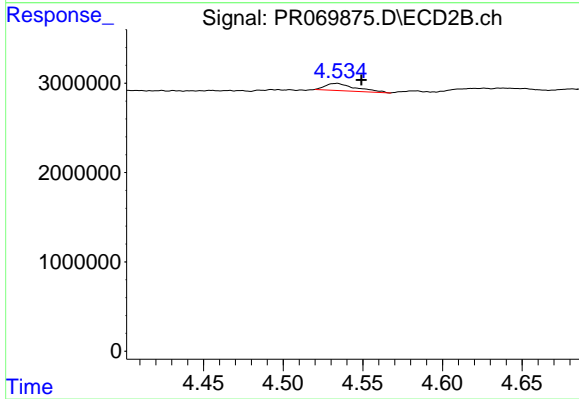
#23 AR-1248-3

R.T.: 4.323 min
 Delta R.T.: -0.049 min
 Response: 938507
 Conc: 5.93 ng/ml



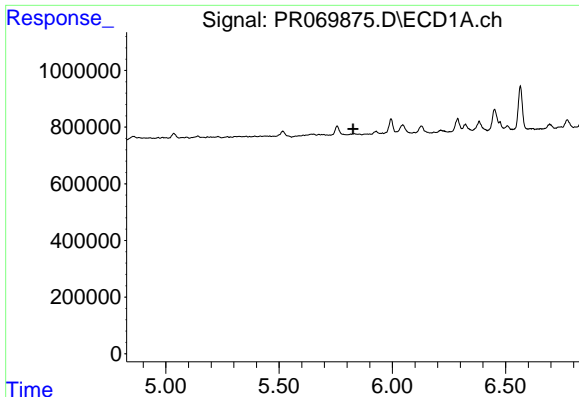
#24 AR-1248-4

R.T.: 5.756 min
 Delta R.T.: -0.031 min
 Response: 393278
 Conc: 11.93 ng/ml



#24 AR-1248-4

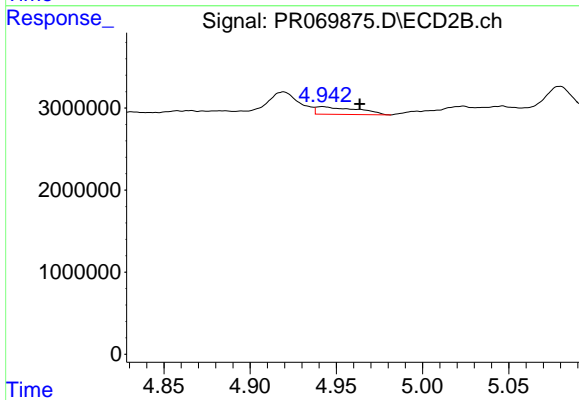
R.T.: 4.534 min
 Delta R.T.: -0.016 min
 Response: 1071204
 Conc: 5.83 ng/ml



#25 AR-1248-5

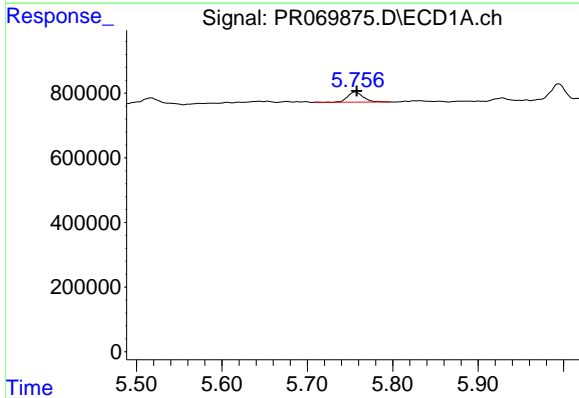
R.T.: 0.000 min
 Exp R.T.: 5.827 min
 Response: 0
 Conc: N.D.

Instrument :
 ECD_R
 ClientSampleId :



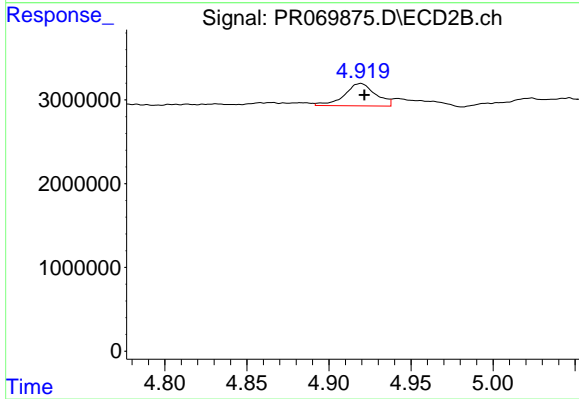
#25 AR-1248-5

R.T.: 4.942 min
 Delta R.T.: -0.022 min
 Response: 1529324
 Conc: 8.70 ng/ml



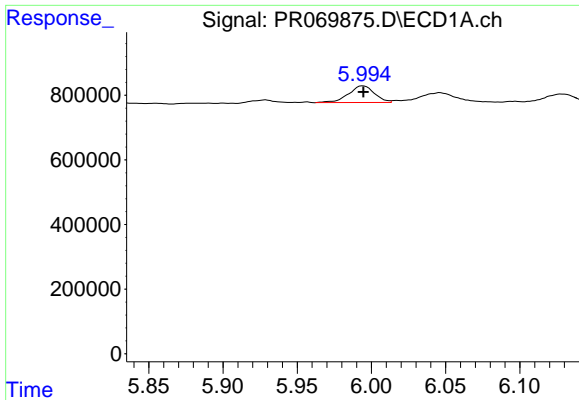
#26 AR-1254-1

R.T.: 5.756 min
 Delta R.T.: -0.002 min
 Response: 393278
 Conc: 11.16 ng/ml



#26 AR-1254-1

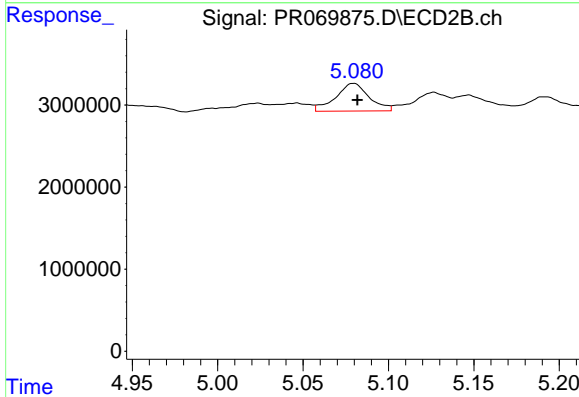
R.T.: 4.919 min
 Delta R.T.: -0.002 min
 Response: 3533536
 Conc: 13.40 ng/ml



#27 AR-1254-2

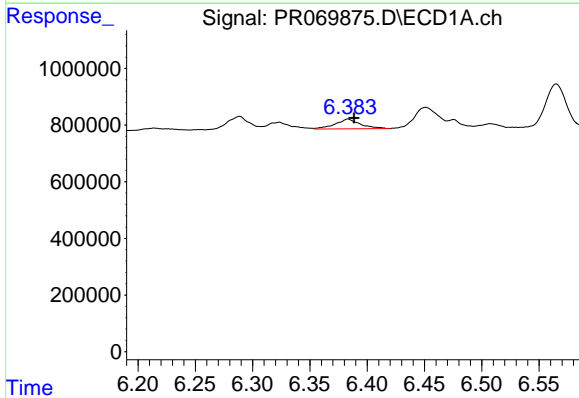
R.T.: 5.994 min
 Delta R.T.: 0.000 min
 Response: 629865
 Conc: 11.73 ng/ml

Instrument :
 ECD_R
 ClientSampleId :



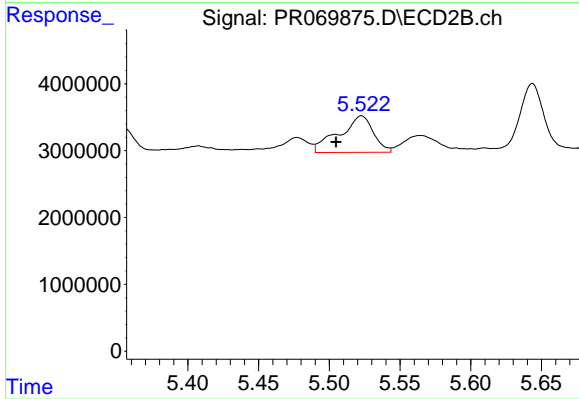
#27 AR-1254-2

R.T.: 5.080 min
 Delta R.T.: -0.002 min
 Response: 4587474
 Conc: 20.17 ng/ml



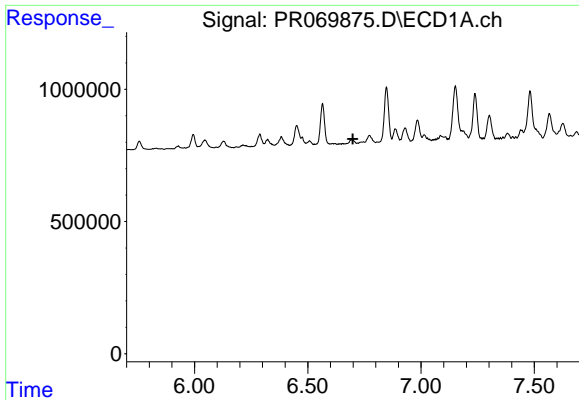
#28 AR-1254-3

R.T.: 6.383 min
 Delta R.T.: -0.005 min
 Response: 518920
 Conc: 9.47 ng/ml



#28 AR-1254-3

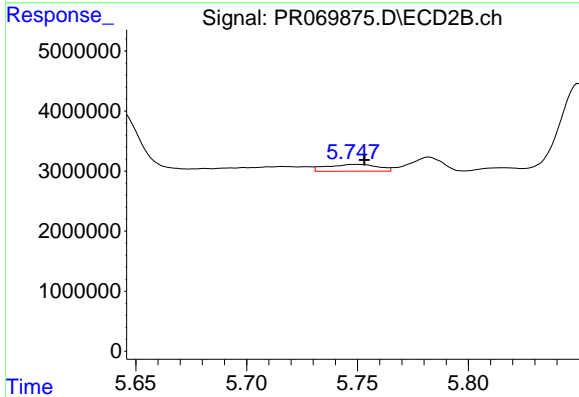
R.T.: 5.523 min
 Delta R.T.: 0.018 min
 Response: 9228499
 Conc: 26.41 ng/ml



#29 AR-1254-4

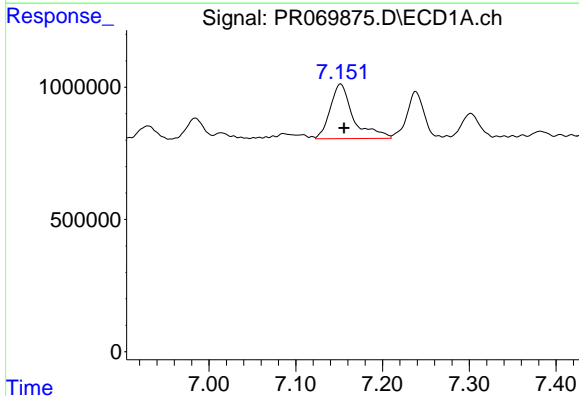
R.T.: 0.000 min
 Exp R.T.: 6.700 min
 Response: 0
 Conc: N.D.

Instrument :
 ECD_R
 ClientSampleId :



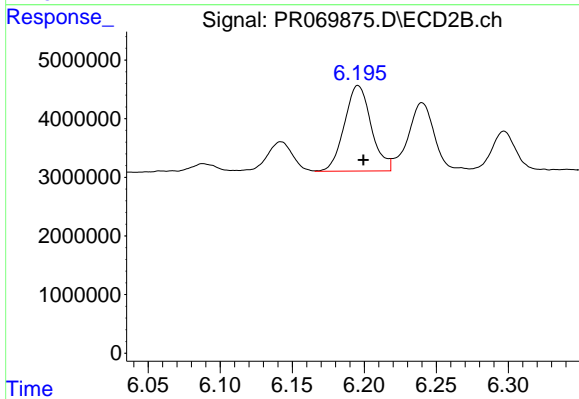
#29 AR-1254-4

R.T.: 5.749 min
 Delta R.T.: -0.004 min
 Response: 1819695
 Conc: 8.80 ng/ml



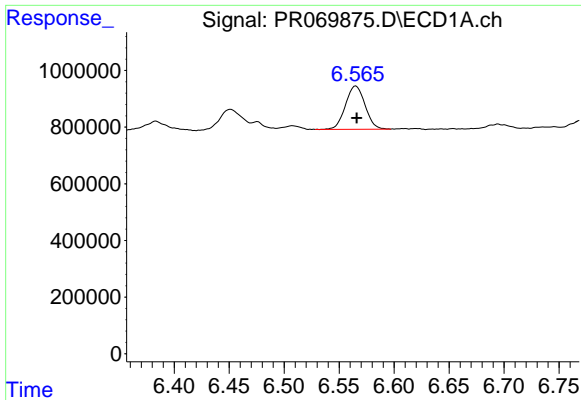
#30 AR-1254-5

R.T.: 7.152 min
 Delta R.T.: -0.004 min
 Response: 3826313
 Conc: 93.29 ng/ml



#30 AR-1254-5

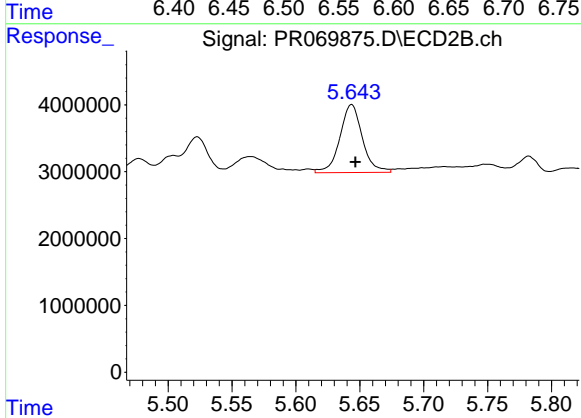
R.T.: 6.196 min
 Delta R.T.: -0.004 min
 Response: 18939441
 Conc: 63.99 ng/ml



#31 AR-1260-1

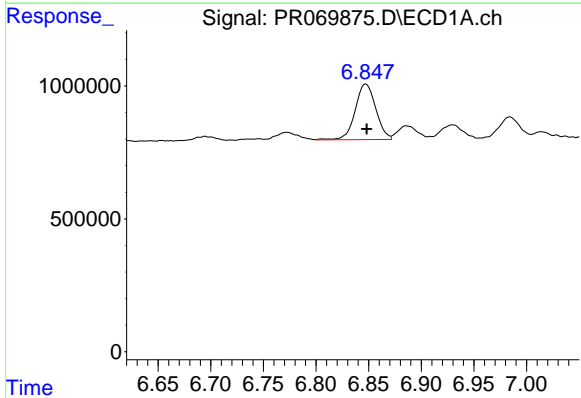
R.T.: 6.565 min
 Delta R.T.: 0.000 min
 Response: 1890847
 Conc: 47.08 ng/ml

Instrument :
 ECD_R
 ClientSampleId :



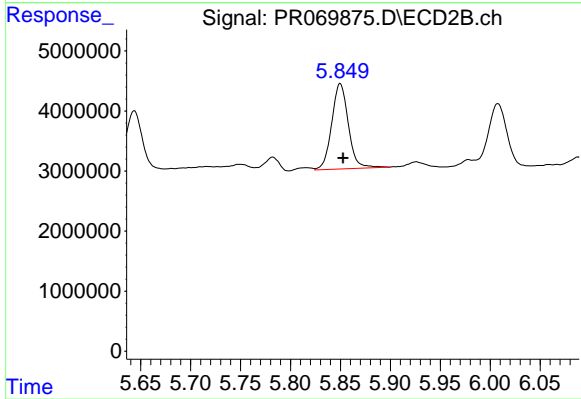
#31 AR-1260-1

R.T.: 5.644 min
 Delta R.T.: -0.003 min
 Response: 12504280
 Conc: 53.16 ng/ml



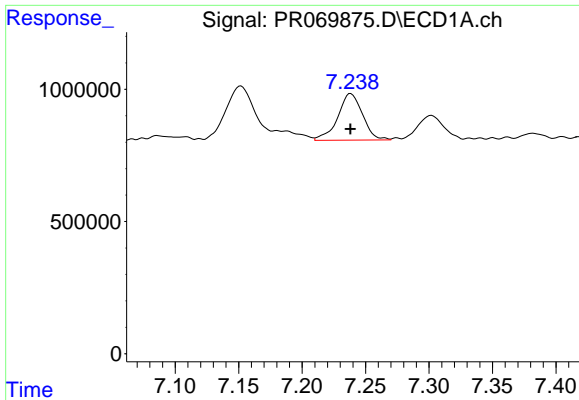
#32 AR-1260-2

R.T.: 6.847 min
 Delta R.T.: 0.000 min
 Response: 2861255
 Conc: 64.04 ng/ml



#32 AR-1260-2

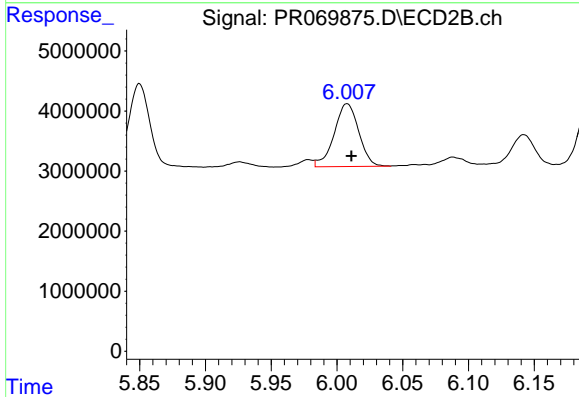
R.T.: 5.850 min
 Delta R.T.: -0.003 min
 Response: 16465324
 Conc: 61.35 ng/ml



#33 AR-1260-3

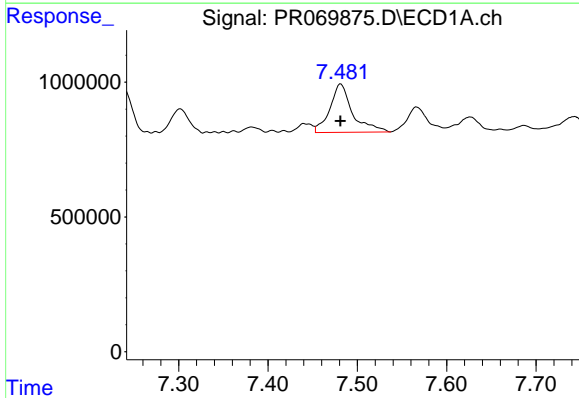
R.T.: 7.238 min
 Delta R.T.: 0.000 min
 Response: 2390531
 Conc: 67.51 ng/ml

Instrument :
 ECD_R
 ClientSampleId :



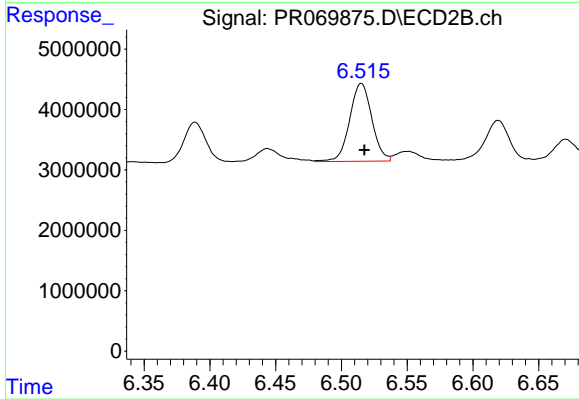
#33 AR-1260-3

R.T.: 6.008 min
 Delta R.T.: -0.003 min
 Response: 13627681
 Conc: 53.34 ng/ml



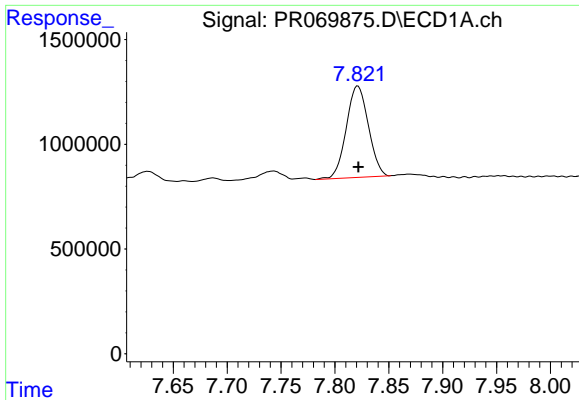
#34 AR-1260-4

R.T.: 7.481 min
 Delta R.T.: 0.000 min
 Response: 3160230
 Conc: 81.01 ng/ml



#34 AR-1260-4

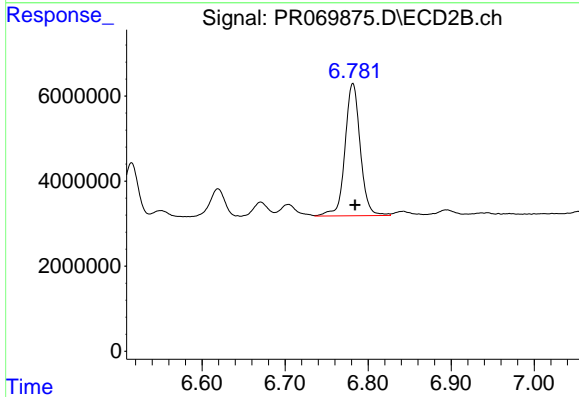
R.T.: 6.515 min
 Delta R.T.: -0.002 min
 Response: 15121894
 Conc: 69.61 ng/ml



#35 AR-1260-5

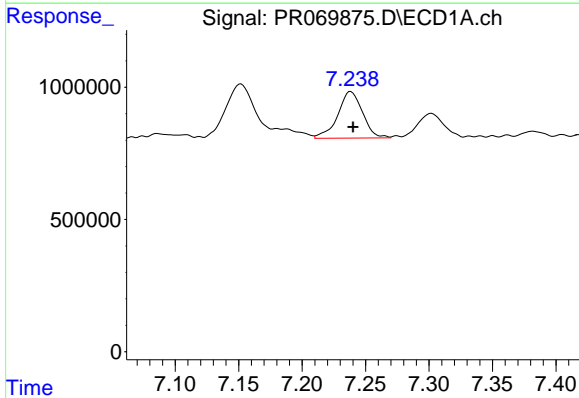
R.T.: 7.821 min
 Delta R.T.: 0.000 min
 Response: 6210592
 Conc: 88.30 ng/ml

Instrument :
 ECD_R
 ClientSampleId :



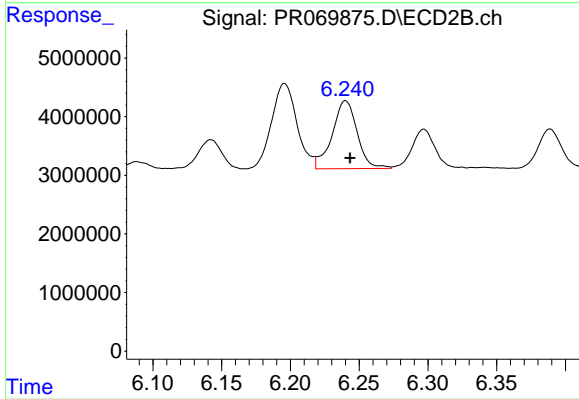
#35 AR-1260-5

R.T.: 6.782 min
 Delta R.T.: -0.003 min
 Response: 39699419
 Conc: 79.47 ng/ml



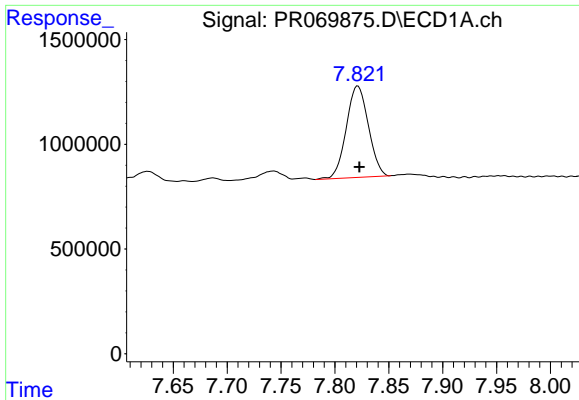
#36 AR-1262-1

R.T.: 7.238 min
 Delta R.T.: -0.002 min
 Response: 2390531
 Conc: 46.84 ng/ml



#36 AR-1262-1

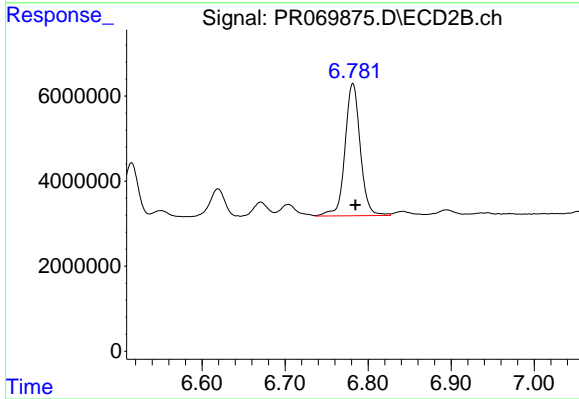
R.T.: 6.240 min
 Delta R.T.: -0.003 min
 Response: 14710449
 Conc: 46.38 ng/ml



#37 AR-1262-2

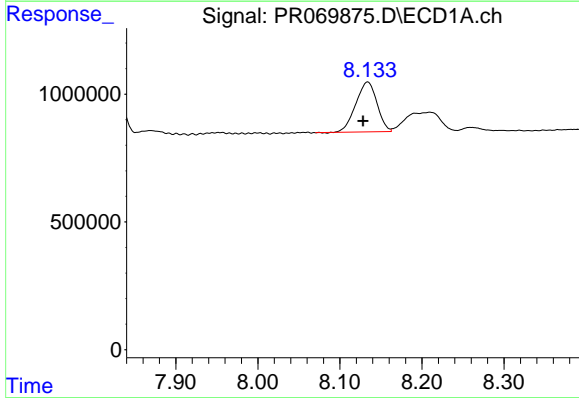
R.T.: 7.821 min
 Delta R.T.: -0.001 min
 Response: 6210592
 Conc: 77.95 ng/ml

Instrument :
 ECD_R
 ClientSampleId :



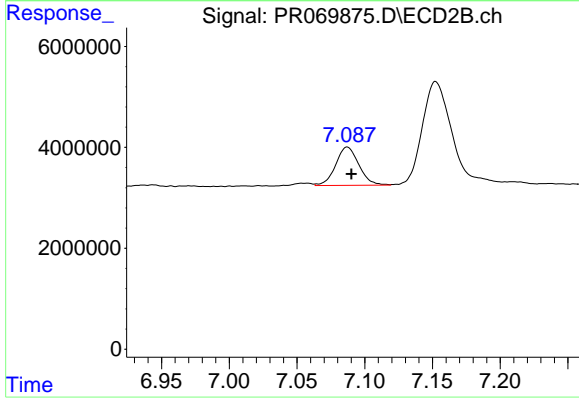
#37 AR-1262-2

R.T.: 6.782 min
 Delta R.T.: -0.003 min
 Response: 39699419
 Conc: 71.53 ng/ml



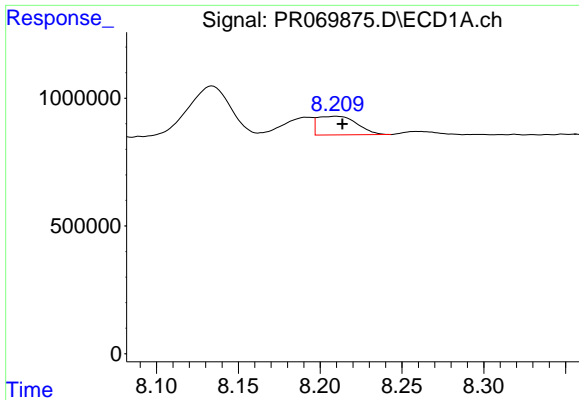
#38 AR-1262-3

R.T.: 8.134 min
 Delta R.T.: 0.006 min
 Response: 3507419
 Conc: 64.88 ng/ml



#38 AR-1262-3

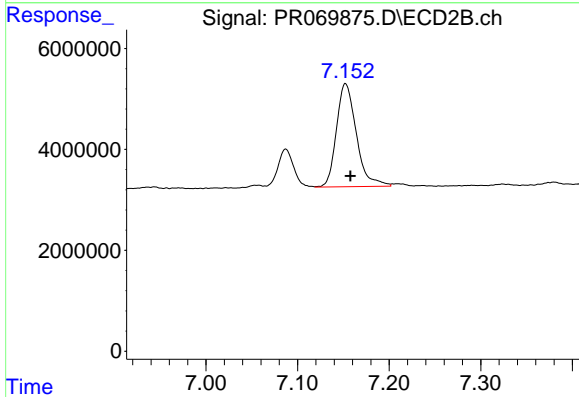
R.T.: 7.087 min
 Delta R.T.: -0.003 min
 Response: 9066655
 Conc: 41.11 ng/ml



#39 AR-1262-4

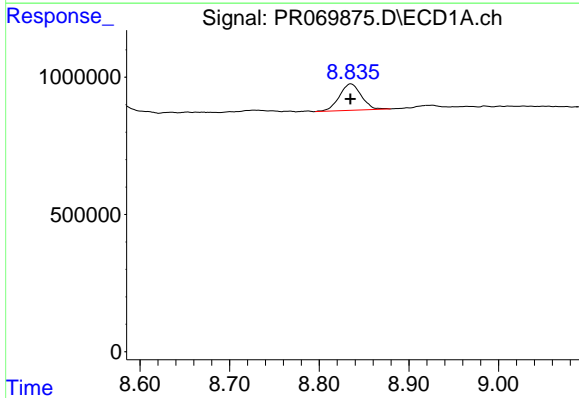
R.T.: 8.210 min
 Delta R.T.: -0.004 min
 Response: 1221965
 Conc: 28.50 ng/ml

Instrument :
 ECD_R
 ClientSampleId :



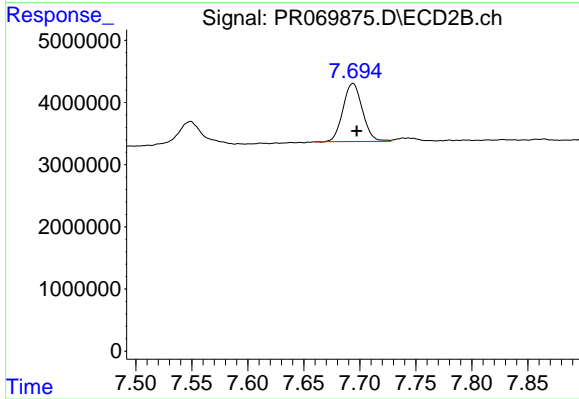
#39 AR-1262-4

R.T.: 7.152 min
 Delta R.T.: -0.005 min
 Response: 30931351
 Conc: 73.97 ng/ml



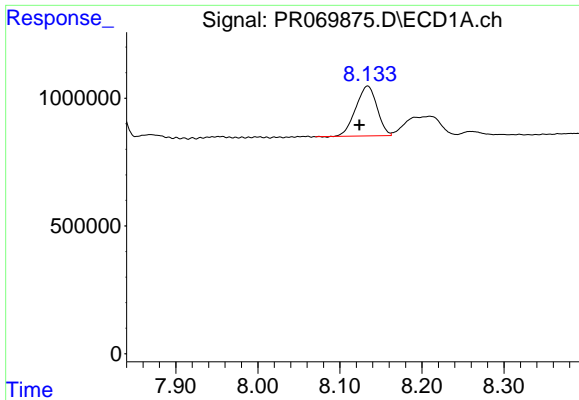
#40 AR-1262-5

R.T.: 8.835 min
 Delta R.T.: 0.000 min
 Response: 1628558
 Conc: 63.16 ng/ml



#40 AR-1262-5

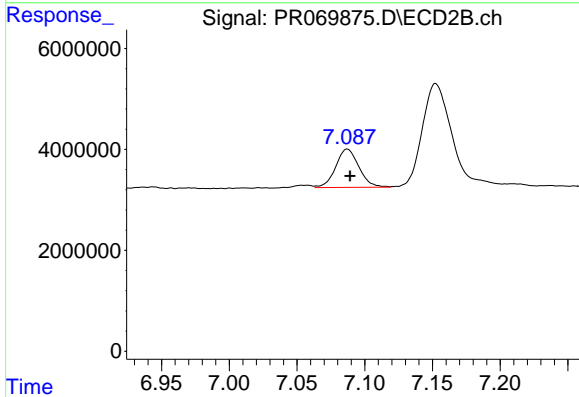
R.T.: 7.694 min
 Delta R.T.: -0.003 min
 Response: 11331446
 Conc: 59.95 ng/ml



#41 AR-1268-1

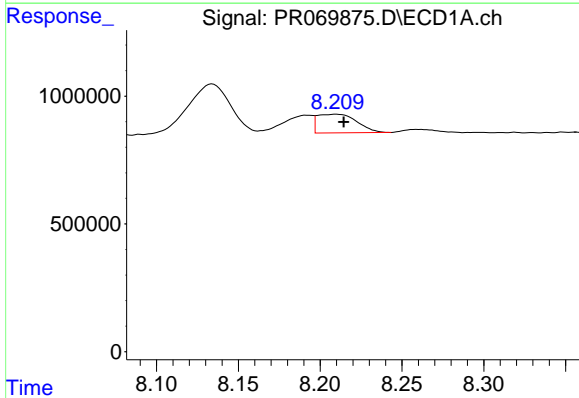
R.T.: 8.134 min
 Delta R.T.: 0.010 min
 Response: 3507419
 Conc: 36.16 ng/ml

Instrument :
 ECD_R
 ClientSampleId :



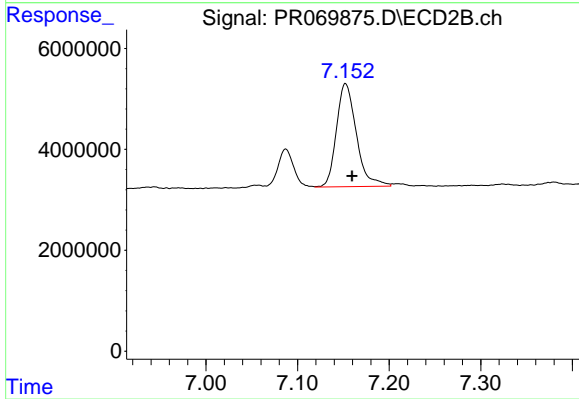
#41 AR-1268-1

R.T.: 7.087 min
 Delta R.T.: -0.002 min
 Response: 9066655
 Conc: 13.72 ng/ml



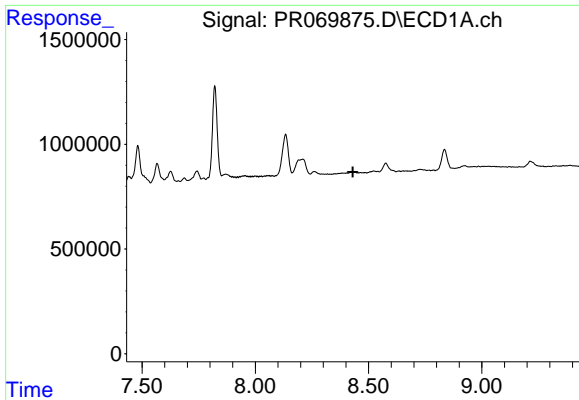
#42 AR-1268-2

R.T.: 8.210 min
 Delta R.T.: -0.004 min
 Response: 1221965
 Conc: 13.96 ng/ml



#42 AR-1268-2

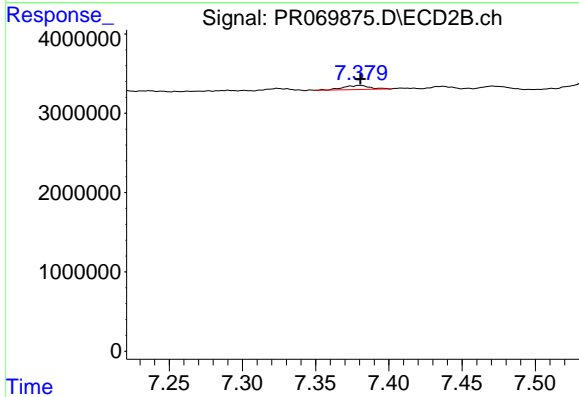
R.T.: 7.152 min
 Delta R.T.: -0.007 min
 Response: 30931351
 Conc: 50.73 ng/ml



#43 AR-1268-3

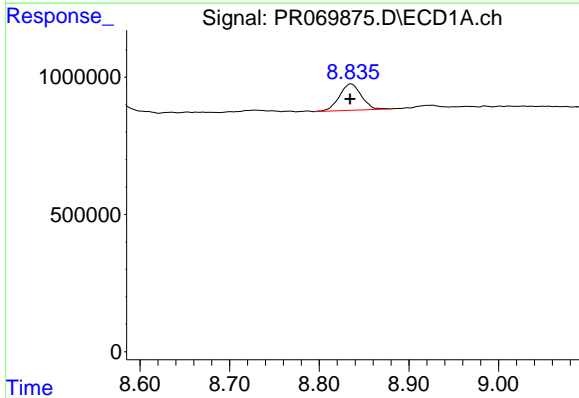
R.T.: 0.000 min
 Exp R.T.: 8.431 min
 Response: 0
 Conc: N.D.

Instrument :
 ECD_R
 ClientSampleId :



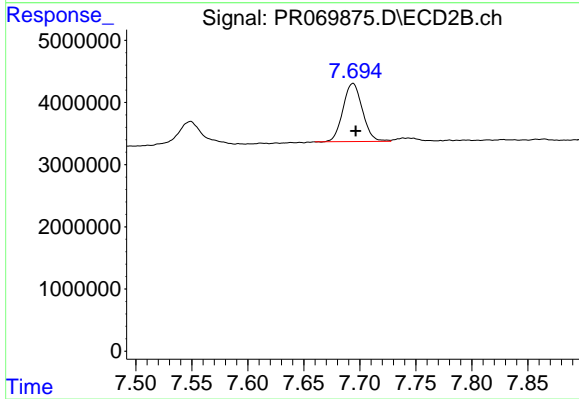
#43 AR-1268-3

R.T.: 7.380 min
 Delta R.T.: 0.000 min
 Response: 654253
 Conc: 1.26 ng/ml



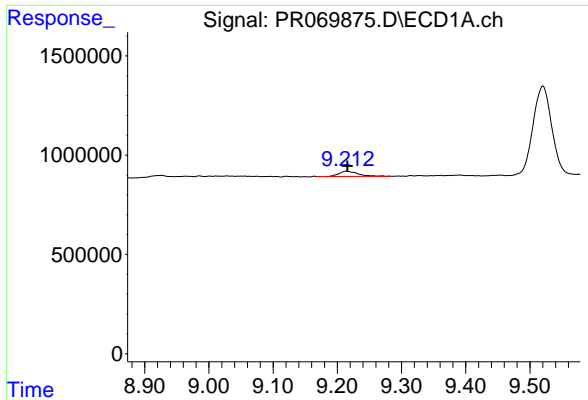
#44 AR-1268-4

R.T.: 8.835 min
 Delta R.T.: 0.001 min
 Response: 1628558
 Conc: 55.89 ng/ml



#44 AR-1268-4

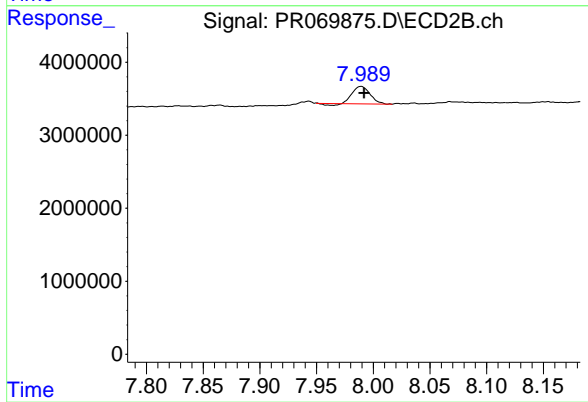
R.T.: 7.694 min
 Delta R.T.: -0.002 min
 Response: 11331446
 Conc: 52.89 ng/ml



#45 AR-1268-5

R.T.: 9.213 min
Delta R.T.: -0.002 min
Response: 555076
Conc: 2.51 ng/ml

Instrument :
ECD_R
ClientSampleId :



#45 AR-1268-5

R.T.: 7.989 min
Delta R.T.: -0.003 min
Response: 2497330
Conc: 1.55 ng/ml