

Data Path : Z:\pestpcbsrv\HPCHEM1\ECD\_R\Data\PR122723\  
 Data File : PR064811.D  
 Signal(s) : Signal #1: ECD1A.ch Signal #2: ECD2B.ch  
 Acq On : 27 Dec 2023 11:18  
 Operator : AJ\MA  
 Sample : AR1254CCC400  
 Misc :  
 ALS Vial : 6 Sample Multiplier: 1

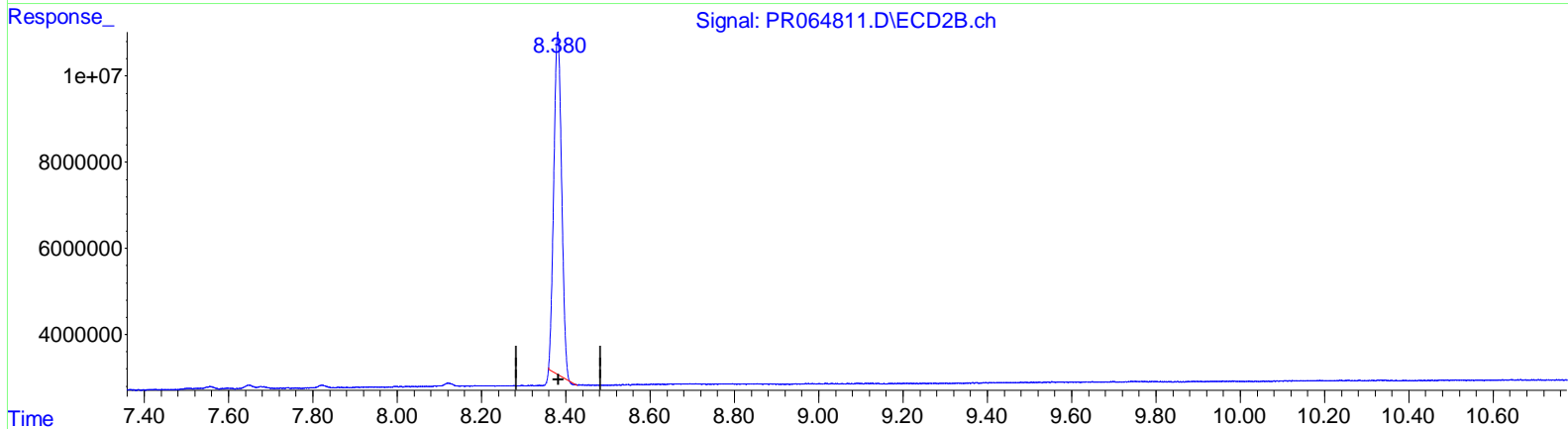
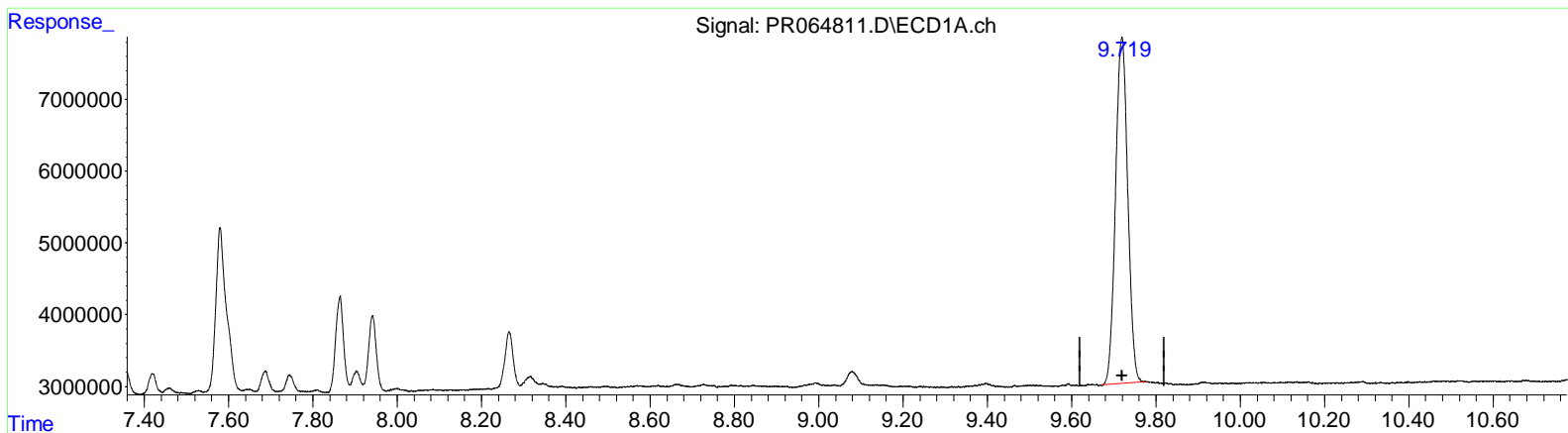
**Instrument :**  
 ECD\_R  
**LabSampled :**  
 AR1254CCC400

**Manual Integrations APPROVED**

Reviewed By :Yogesh Patel 12/28/2023  
 Supervised By :Ankita Jodhani 12/28/2023

Integration File signal 1: autoint1.e  
 Integration File signal 2: autoint2.e  
 Quant Time: Dec 27 20:32:59 2023  
 Quant Method : Z:\pestpcbsrv\HPCHEM1\ECD\_R\Method\PR121423CLP.M  
 Quant Title : GC EXTRACTABLES  
 QLast Update : Fri Dec 15 04:19:57 2023  
 Response via : Initial Calibration  
 Integrator: ChemStation

Volume Inj. : 1 µl  
 Signal #1 Phase : ZB MR1 Signal #2 Phase: ZB MR2  
 Signal #1 Info : 30Mx0.32mmx 0.5µm Signal #2 Info : 30M x 0.32mm x 0.25µm



QEdit

(2) Decachlorobiphenyl (SA)  
 9.719min 44.026 ng/ml  
 response 97014214

(2) Decachlorobiphenyl #2 (SA)  
 8.381min 39.001 ng/ml  
 response 102118426

(+) = Expected Retention Time

Data Path : Z:\pestpcbsrv\HPCHEM1\ECD\_R\Data\PR122723\  
 Data File : PR064811.D  
 Signal(s) : Signal #1: ECD1A.ch Signal #2: ECD2B.ch  
 Acq On : 27 Dec 2023 11:18  
 Operator : AJ\MA  
 Sample : AR1254CCC400  
 Misc :  
 ALS Vial : 6 Sample Multiplier: 1

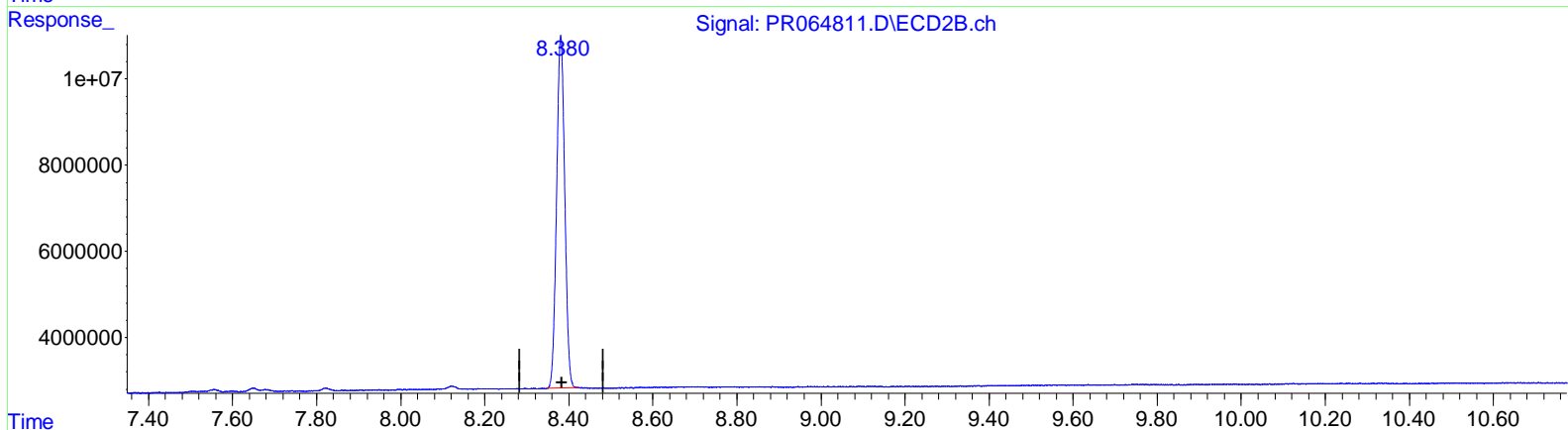
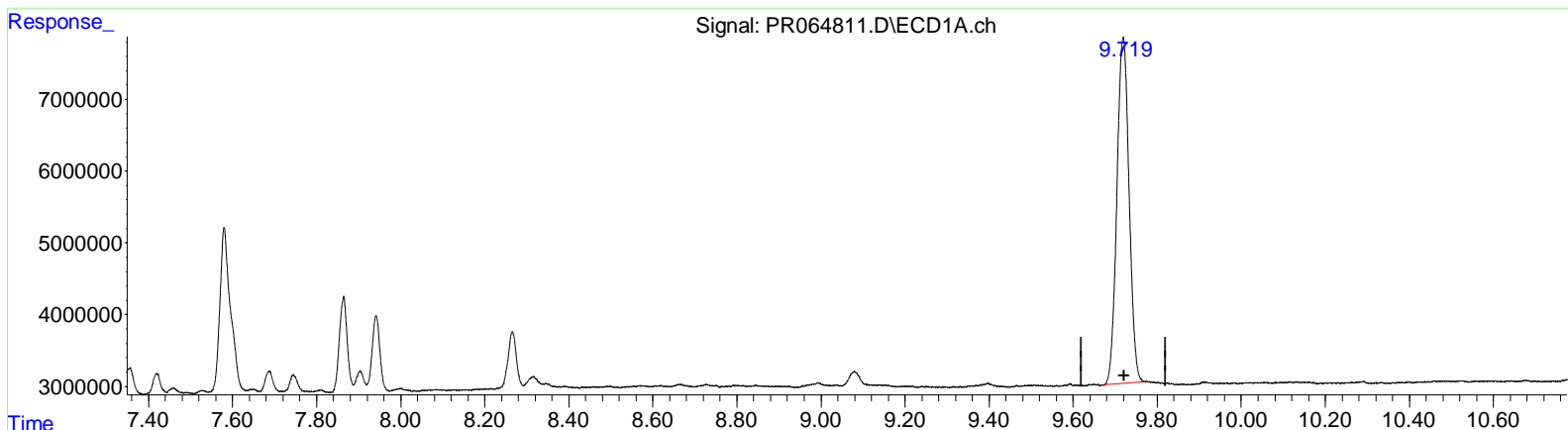
**Instrument :**  
 ECD\_R  
**LabSampled :**  
 AR1254CCC400

**Manual Integrations APPROVED**

Reviewed By :Yogesh Patel 12/28/2023  
 Supervised By :Ankita Jodhani 12/28/2023

Integration File signal 1: autoint1.e  
 Integration File signal 2: autoint2.e  
 Quant Time: Dec 27 20:32:59 2023  
 Quant Method : Z:\pestpcbsrv\HPCHEM1\ECD\_R\Method\PR121423CLP.M  
 Quant Title : GC EXTRACTABLES  
 QLast Update : Fri Dec 15 04:19:57 2023  
 Response via : Initial Calibration  
 Integrator: ChemStation

Volume Inj. : 1 µl  
 Signal #1 Phase : ZB MR1 Signal #2 Phase: ZB MR2  
 Signal #1 Info : 30Mx0.32mmx 0.5µm Signal #2 Info : 30M x 0.32mm x 0.25µm



QEdit

(2) Decachlorobiphenyl (SA)  
 9.719min 44.026 ng/ml  
 response 97014214

(2) Decachlorobiphenyl #2 (SA)  
 8.380min 42.036 ng/ml m  
 response 110065667

(+) = Expected Retention Time