

Data Path : Z:\pestpcbsrv\HPCHEM1\ECD\_R\Data\PR021820\  
 Data File : PR044746.D  
 Signal(s) : Signal #1: ECD1A.ch Signal #2: ECD2B.ch  
 Acq On : 18 Feb 2020 09:46  
 Operator : AJ\MA  
 Sample : AR1660CCC400  
 Misc :  
 ALS Vial : 3 Sample Multiplier: 1

Instrument :  
 ECD\_R  
 ClientSampleId :  
 AR1660351

Integration File signal 1: autoint1.e  
 Integration File signal 2: autoint2.e  
 Quant Time: Feb 19 03:26:00 2020  
 Quant Method : Z:\pestpcbsrv\HPCHEM1\ECD\_R\Method\PR012620CLP.M  
 Quant Title : GC EXTRACTABLES  
 QLast Update : Fri Jan 24 22:56:32 2020  
 Response via : Initial Calibration  
 Integrator: ChemStation

Volume Inj. : 1 µl  
 Signal #1 Phase : ZB MR1 Signal #2 Phase: ZB MR2  
 Signal #1 Info : 30Mx0.32mmx 0.5µm Signal #2 Info : 30M x 0.32mm x 0.25µm

Compound	RT#1	RT#2	Resp#1	Resp#2	ng/ml	ng/ml
-----						
System Monitoring Compounds						
1) SA Tetrachlo...	4.690	3.954	167.4E6	305.2E6	23.224	20.504
2) SA Decachlor...	10.576	9.027	271.7E6	460.8E6	36.680	34.428
Target Compounds						
3) L1 AR-1016-1	5.865	5.043	124.5E6	159.4E6	446.894	393.659
4) L1 AR-1016-2	5.888	5.062	178.4E6	213.3E6	453.722	380.920
5) L1 AR-1016-3	5.951	5.240	105.3E6	122.5E6	450.082	413.272
6) L1 AR-1016-4	6.051	5.279	87024826	93414313	445.283	399.300
7) L1 AR-1016-5	6.343	5.495	85083806	131.7E6	439.996	395.230
8) L2 AR-1221-1	4.894	4.162	9581887	20048985	118.432	118.127
9) L2 AR-1221-2	4.987	4.251	12276362	26363507	217.737	218.882
10) L2 AR-1221-3	5.064	4.327	55652687	106.8E6	288.419	271.591
11) L3 AR-1232-1	5.064	4.327	55652687	106.8E6	385.332	360.085
12) L3 AR-1232-2	5.598	5.062	83948625	213.3E6	1146.889	917.558
13) L3 AR-1232-3	5.888	5.240	178.4E6	122.5E6	1128.903	1029.380
14) L3 AR-1232-4	6.051	5.323	87024826	115.6E6	1113.054	1110.618
15) L3 AR-1232-5	6.137	5.495	75466587	131.7E6	1286.795	1065.531
16) L4 AR-1242-1	5.865	5.043	124.5E6	159.4E6	585.895	517.735
17) L4 AR-1242-2	5.888	5.062	178.4E6	213.3E6	592.814	499.500
18) L4 AR-1242-3	5.951	5.240	105.3E6	122.5E6	584.953	550.249
19) L4 AR-1242-4	6.051	5.323	87024826	115.6E6	578.068	536.354
20) L4 AR-1242-5	6.787	5.847	13564017	107.1E6	77.435	292.541 #
21) L5 AR-1248-1	5.865	5.043	124.5E6	159.4E6	749.758	646.941
22) L5 AR-1248-2	6.137	5.279	75466587	93414313	337.454	311.980
23) L5 AR-1248-3	6.343	5.323	85083806	115.6E6	339.276	370.722
24) L5 AR-1248-4	6.747	5.495	15265901	131.7E6	50.012	318.911 #
25) L5 AR-1248-5	6.787	5.888	13564017	19213283	47.030	39.027
26) L6 AR-1254-1	6.720	5.847	58783640	107.1E6	193.485	145.021 #
27) L6 AR-1254-2	6.936	5.994	64848387	100.2E6	138.823	147.996
28) L6 AR-1254-3	7.307	6.413	36414600	248.2E6	72.000	220.963 #
29) L6 AR-1254-4	7.592	6.627	26234494	32988326	66.450	38.867 #
30) L6 AR-1254-5	8.010	7.043	216.1E6	380.8E6	501.227	356.099 #
31) L7 AR-1260-1	7.468	6.528	151.3E6	274.1E6	416.140	367.929
32) L7 AR-1260-2	7.723	6.716	184.9E6	407.7E6	407.612	360.537
33) L7 AR-1260-3	8.083	6.870	143.6E6	333.1E6	405.536	365.203
34) L7 AR-1260-4	8.321	7.342	161.7E6	291.1E6	398.289	354.055
35) L7 AR-1260-5	8.656	7.582	342.9E6	876.2E6	390.110	354.948
36) L8 AR-1262-1	8.143	7.043	72971926	380.8E6	349.970	640.118 #
37) L8 AR-1262-2	8.656	7.582	342.9E6	876.2E6	339.503	322.333
38) L8 AR-1262-3	9.006	7.866	209.7E6	214.1E6	311.854	194.733 #
39) L8 AR-1262-4	9.063	7.930	135.5E6	563.6E6	263.435	312.199
40) L8 AR-1262-5	9.779	8.443	99091198	200.2E6	264.804	240.700
41) L9 AR-1268-1	9.006	7.866	209.7E6	214.1E6	184.547	72.345 #
42) L9 AR-1268-2	9.063	7.930	135.5E6	563.6E6	125.957	223.551 #

Data Path : Z:\pestpcbsrv\HPCHEM1\ECD\_R\Data\PR021820\  
 Data File : PR044746.D  
 Signal(s) : Signal #1: ECD1A.ch Signal #2: ECD2B.ch  
 Acq On : 18 Feb 2020 09:46  
 Operator : AJ\MA  
 Sample : AR1660CCC400  
 Misc :  
 ALS Vial : 3 Sample Multiplier: 1

Instrument :  
 ECD\_R  
 ClientSampleId :  
 AR1660351

Integration File signal 1: autoint1.e  
 Integration File signal 2: autoint2.e  
 Quant Time: Feb 19 03:26:00 2020  
 Quant Method : Z:\pestpcbsrv\HPCHEM1\ECD\_R\Method\PR012620CLP.M  
 Quant Title : GC EXTRACTABLES  
 QLast Update : Fri Jan 24 22:56:32 2020  
 Response via : Initial Calibration  
 Integrator: ChemStation

Volume Inj. : 1 µl  
 Signal #1 Phase : ZB MR1 Signal #2 Phase: ZB MR2  
 Signal #1 Info : 30Mx0.32mmx 0.5µm Signal #2 Info : 30M x 0.32mm x 0.25µm

	Compound	RT#1	RT#2	Resp#1	Resp#2	ng/ml	ng/ml
43)	L9 AR-1268-3	9.323	8.140	4616550	9768847	5.102	4.599
44)	L9 AR-1268-4	9.779	8.443	99091198	200.2E6	247.300	227.221
45)	L9 AR-1268-5	10.219	8.754	27806436	47612064	8.758	7.753

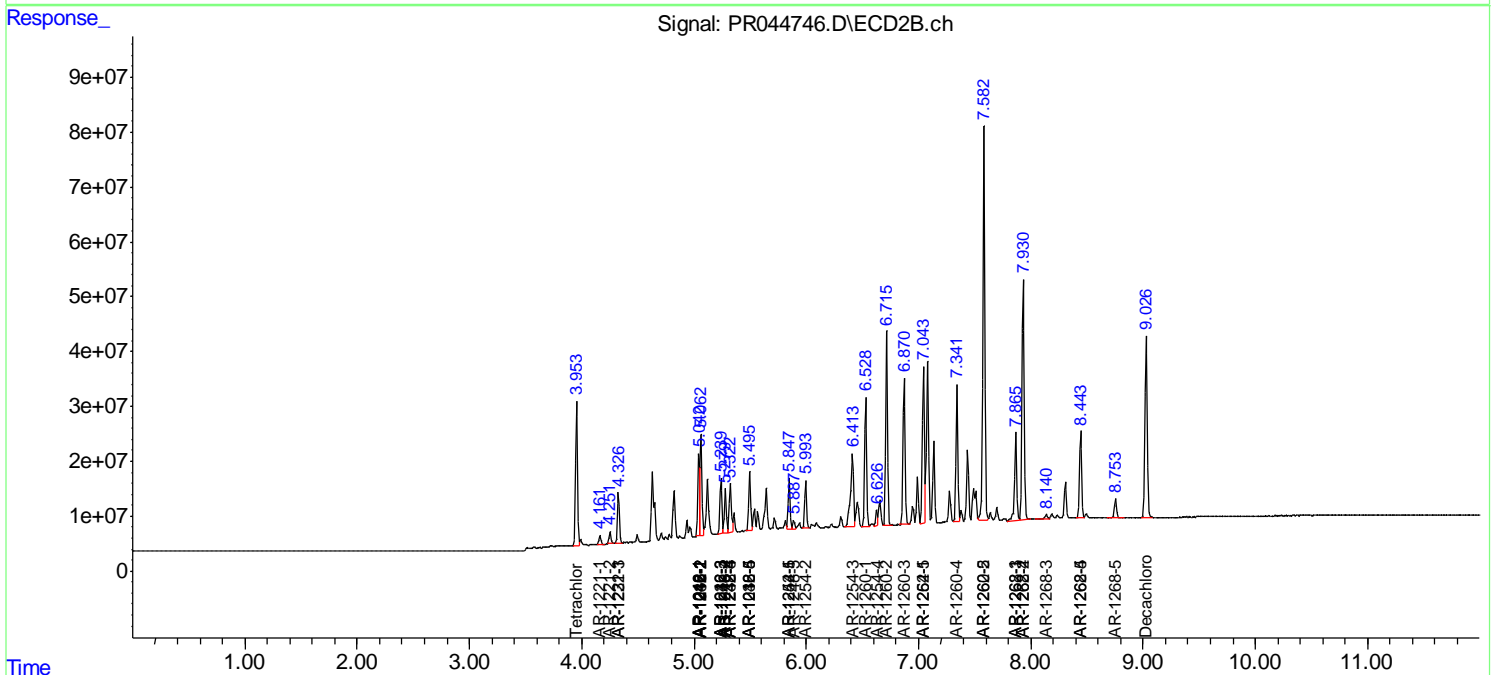
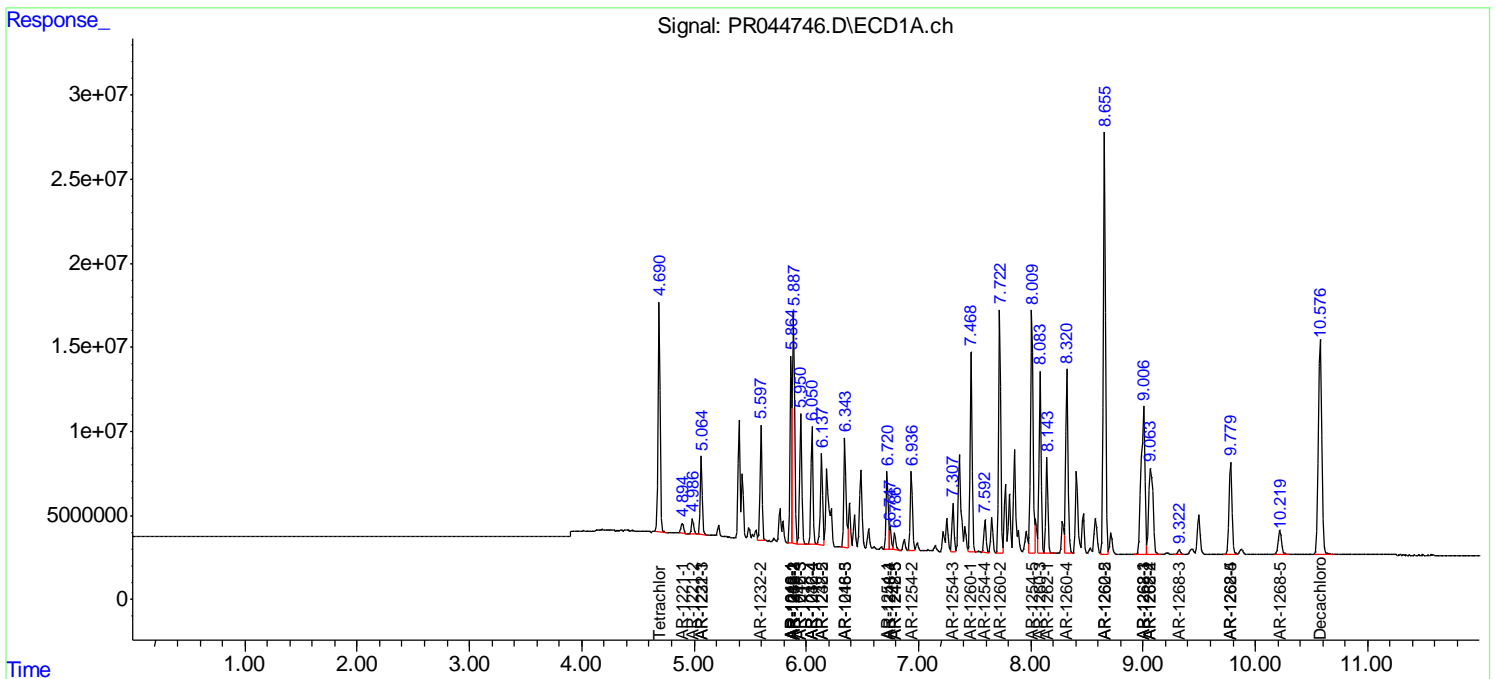
(f)=RT Delta > 1/2 Window (#)=Amounts differ by > 25% (m)=manual int.

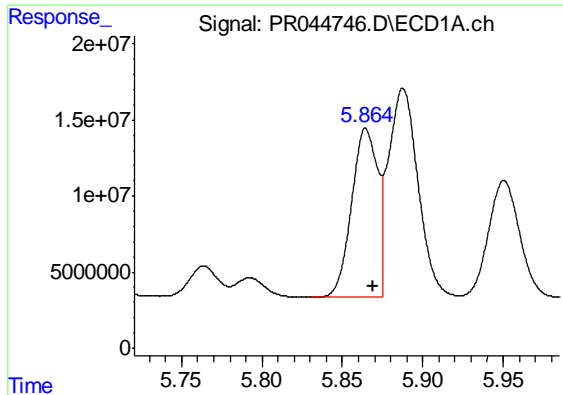
Data Path : Z:\pestpcbsrv\HPCHEM1\ECD\_R\Data\PR021820\  
 Data File : PR044746.D  
 Signal(s) : Signal #1: ECD1A.ch Signal #2: ECD2B.ch  
 Acq On : 18 Feb 2020 09:46  
 Operator : AJ\MA  
 Sample : AR1660CCC400  
 Misc :  
 ALS Vial : 3 Sample Multiplier: 1

Instrument :  
 ECD\_R  
 ClientSampled :  
 AR1660351

Integration File signal 1: autoint1.e  
 Integration File signal 2: autoint2.e  
 Quant Time: Feb 19 03:26:00 2020  
 Quant Method : Z:\pestpcbsrv\HPCHEM1\ECD\_R\Method\PR012620CLP.M  
 Quant Title : GC EXTRACTABLES  
 QLast Update : Fri Jan 24 22:56:32 2020  
 Response via : Initial Calibration  
 Integrator: ChemStation

Volume Inj. : 1 µl  
 Signal #1 Phase : ZB MR1 Signal #2 Phase: ZB MR2  
 Signal #1 Info : 30Mx0.32mmx 0.5µm Signal #2 Info : 30M x 0.32mm x 0.25µm

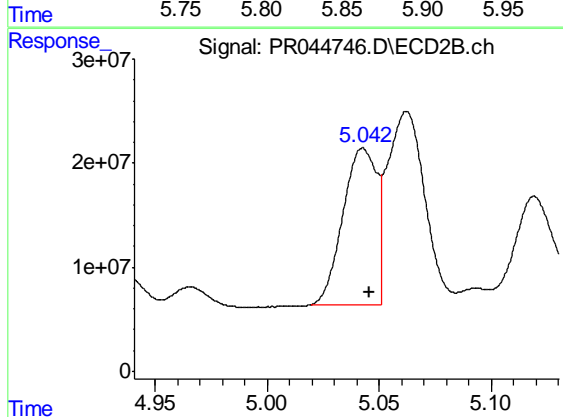




#3 AR-1016-1

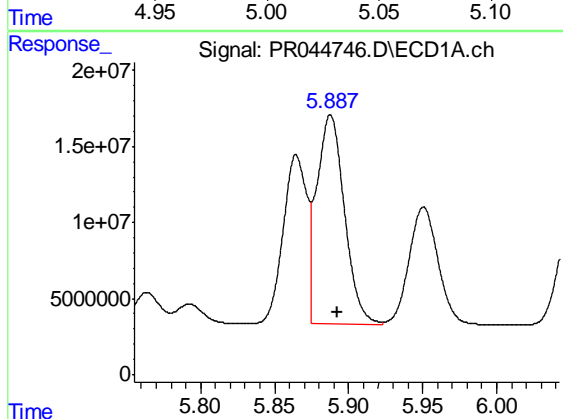
R.T.: 5.865 min  
 Delta R.T.: -0.005 min  
 Response: 124531407  
 Conc: 446.89 ng/ml

Instrument :  
 ECD\_R  
 ClientSampleId :  
 AR1660351



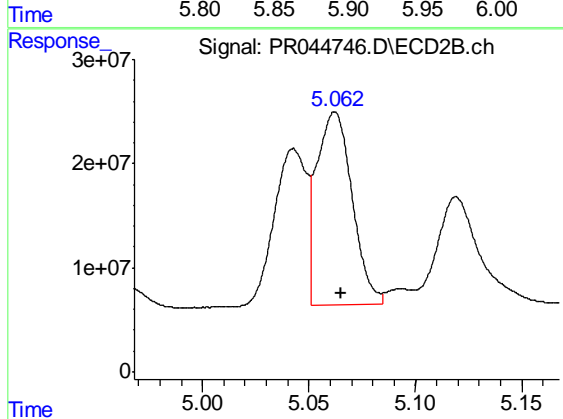
#3 AR-1016-1

R.T.: 5.043 min  
 Delta R.T.: -0.003 min  
 Response: 159433633  
 Conc: 393.66 ng/ml



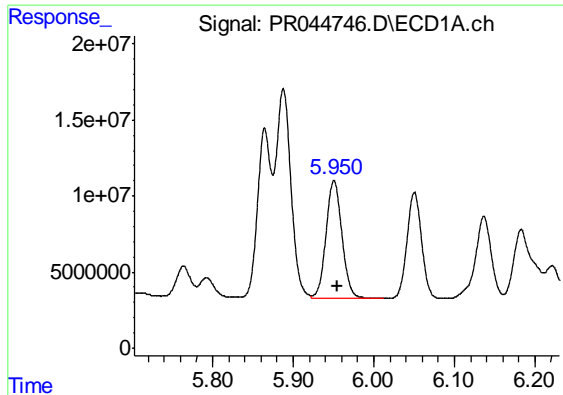
#4 AR-1016-2

R.T.: 5.888 min  
 Delta R.T.: -0.005 min  
 Response: 178362072  
 Conc: 453.72 ng/ml



#4 AR-1016-2

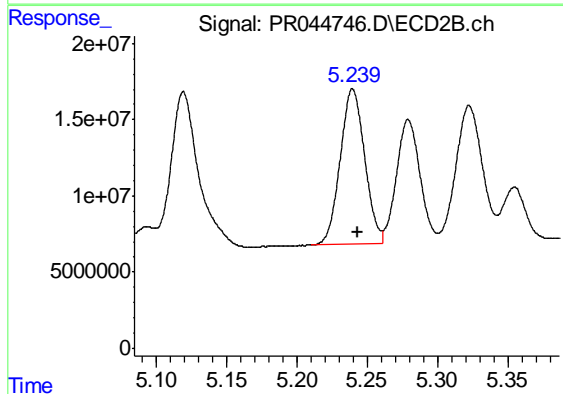
R.T.: 5.062 min  
 Delta R.T.: -0.003 min  
 Response: 213327385  
 Conc: 380.92 ng/ml



#5 AR-1016-3

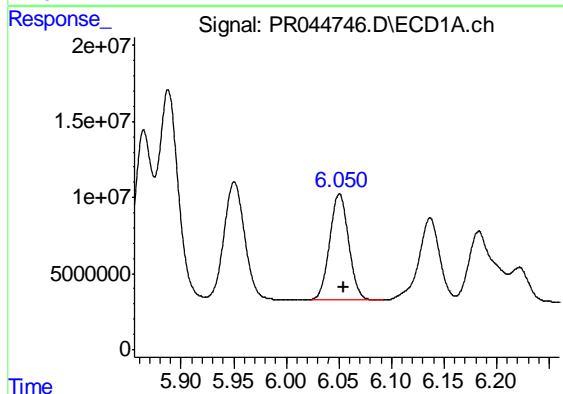
R.T.: 5.951 min  
Delta R.T.: -0.004 min  
Response: 105284731  
Conc: 450.08 ng/ml

Instrument :  
ECD\_R  
ClientSampleId :  
AR1660351



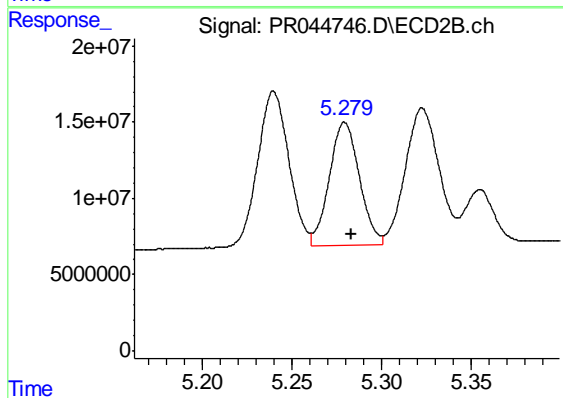
#5 AR-1016-3

R.T.: 5.240 min  
Delta R.T.: -0.004 min  
Response: 122494424  
Conc: 413.27 ng/ml



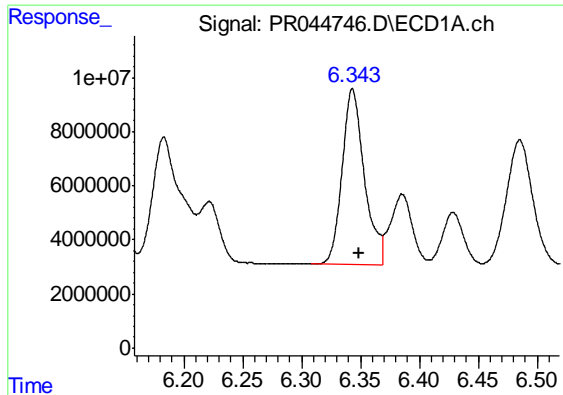
#6 AR-1016-4

R.T.: 6.051 min  
Delta R.T.: -0.004 min  
Response: 87024826  
Conc: 445.28 ng/ml



#6 AR-1016-4

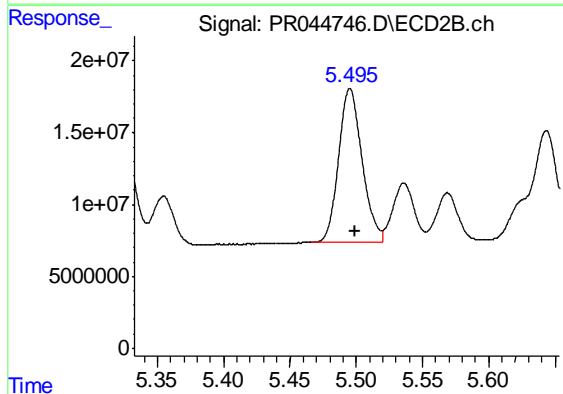
R.T.: 5.279 min  
Delta R.T.: -0.004 min  
Response: 93414313  
Conc: 399.30 ng/ml



#7 AR-1016-5

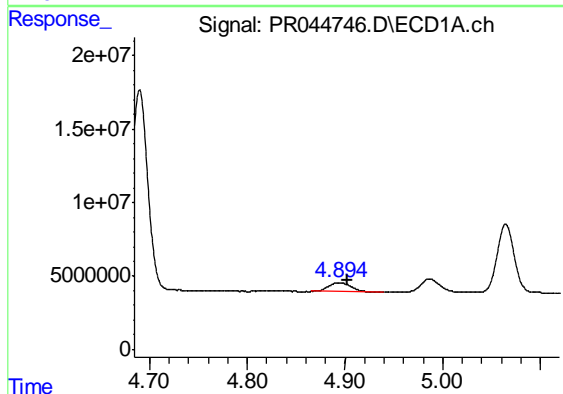
R.T.: 6.343 min  
 Delta R.T.: -0.005 min  
 Response: 85083806  
 Conc: 440.00 ng/ml

Instrument :  
 ECD\_R  
 ClientSampleId :  
 AR1660351



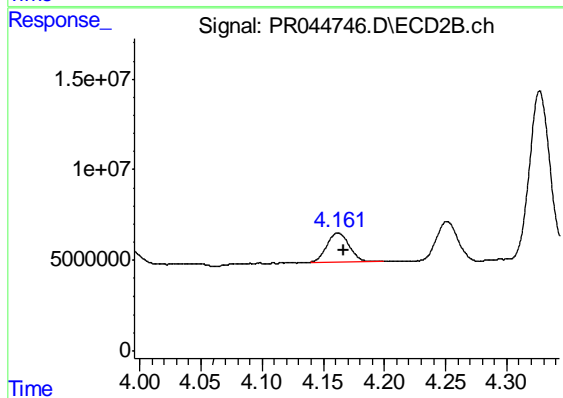
#7 AR-1016-5

R.T.: 5.495 min  
 Delta R.T.: -0.004 min  
 Response: 131668003  
 Conc: 395.23 ng/ml



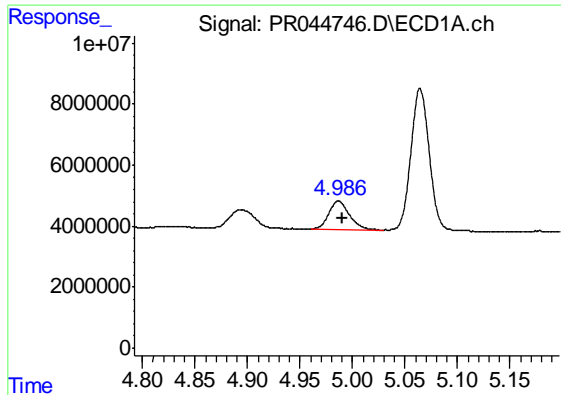
#8 AR-1221-1

R.T.: 4.894 min  
 Delta R.T.: -0.008 min  
 Response: 9581887  
 Conc: 118.43 ng/ml



#8 AR-1221-1

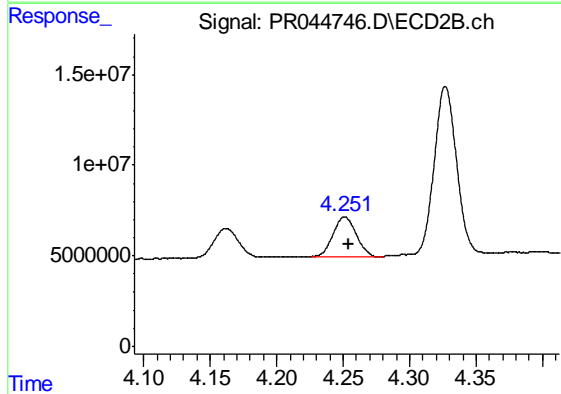
R.T.: 4.162 min  
 Delta R.T.: -0.004 min  
 Response: 20048985  
 Conc: 118.13 ng/ml



#9 AR-1221-2

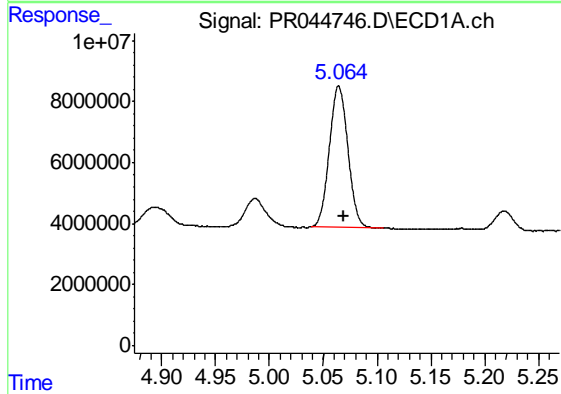
R.T.: 4.987 min  
Delta R.T.: -0.004 min  
Response: 12276362  
Conc: 217.74 ng/ml

Instrument :  
ECD\_R  
ClientSampled :  
AR1660351



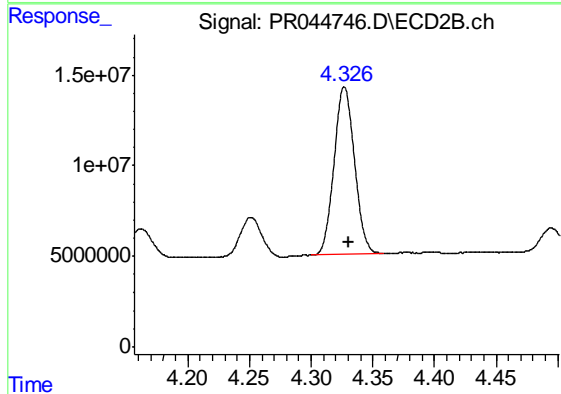
#9 AR-1221-2

R.T.: 4.251 min  
Delta R.T.: -0.003 min  
Response: 26363507  
Conc: 218.88 ng/ml



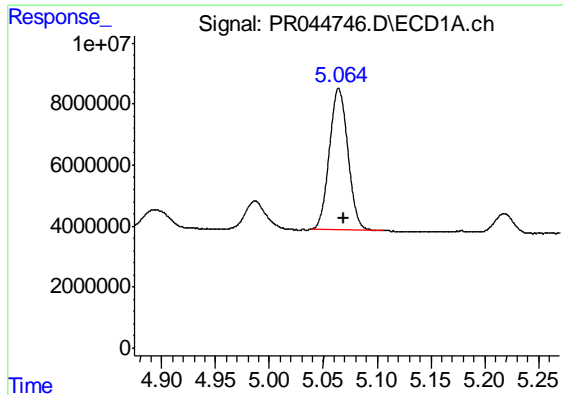
#10 AR-1221-3

R.T.: 5.064 min  
Delta R.T.: -0.004 min  
Response: 55652687  
Conc: 288.42 ng/ml



#10 AR-1221-3

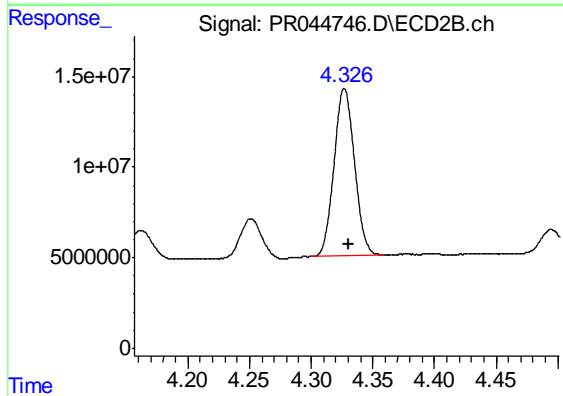
R.T.: 4.327 min  
Delta R.T.: -0.003 min  
Response: 106791676  
Conc: 271.59 ng/ml



#11 AR-1232-1

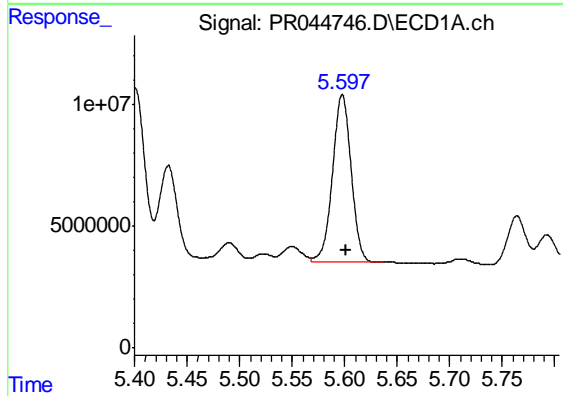
R.T.: 5.064 min  
 Delta R.T.: -0.004 min  
 Response: 55652687  
 Conc: 385.33 ng/ml

Instrument :  
 ECD\_R  
 ClientSampleId :  
 AR1660351



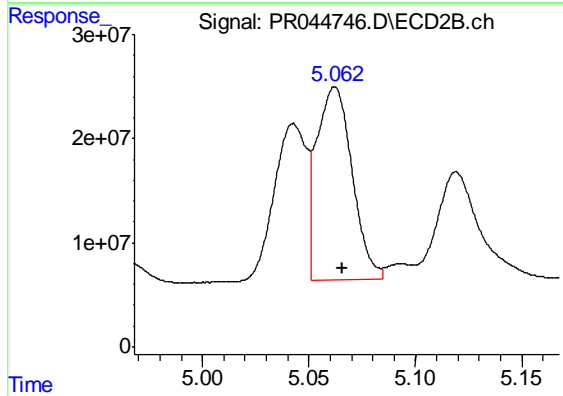
#11 AR-1232-1

R.T.: 4.327 min  
 Delta R.T.: -0.003 min  
 Response: 106791676  
 Conc: 360.08 ng/ml



#12 AR-1232-2

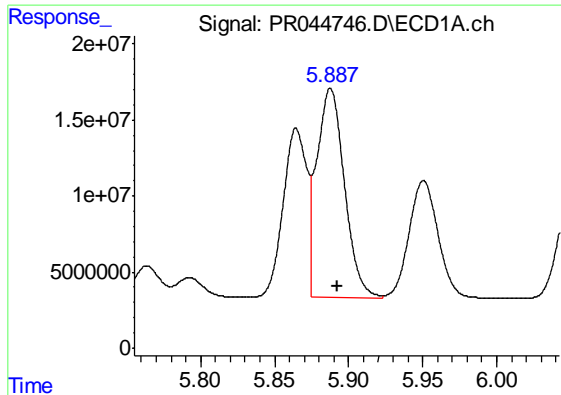
R.T.: 5.598 min  
 Delta R.T.: -0.004 min  
 Response: 83948625  
 Conc: 1146.89 ng/ml



#12 AR-1232-2

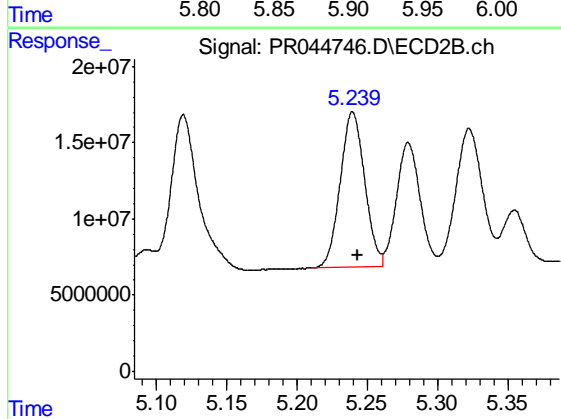
R.T.: 5.062 min  
 Delta R.T.: -0.004 min  
 Response: 213327385  
 Conc: 917.56 ng/ml



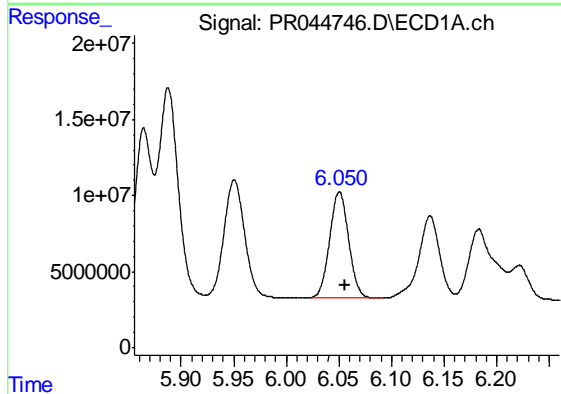


#13 AR-1232-3  
 R.T.: 5.888 min  
 Delta R.T.: -0.004 min  
 Response: 178362072  
 Conc: 1128.90 ng/ml

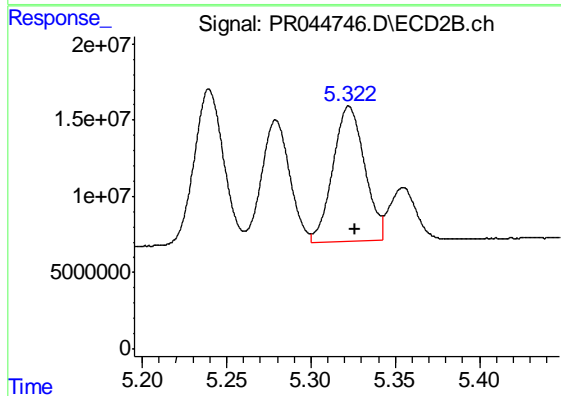
Instrument :  
 ECD\_R  
 ClientSampleId :  
 AR1660351



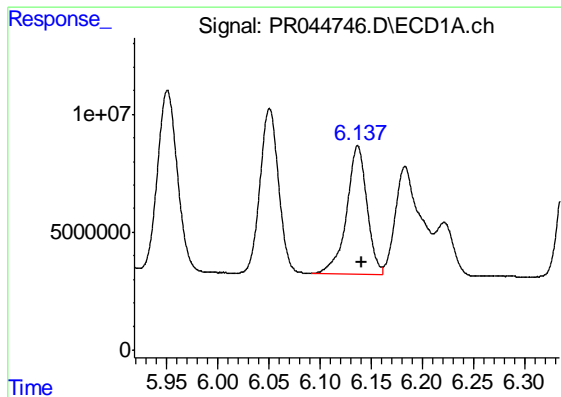
#13 AR-1232-3  
 R.T.: 5.240 min  
 Delta R.T.: -0.004 min  
 Response: 122494424  
 Conc: 1029.38 ng/ml



#14 AR-1232-4  
 R.T.: 6.051 min  
 Delta R.T.: -0.005 min  
 Response: 87024826  
 Conc: 1113.05 ng/ml



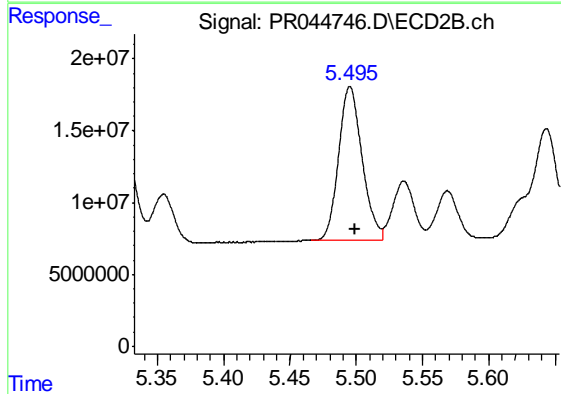
#14 AR-1232-4  
 R.T.: 5.323 min  
 Delta R.T.: -0.004 min  
 Response: 115563580  
 Conc: 1110.62 ng/ml



#15 AR-1232-5

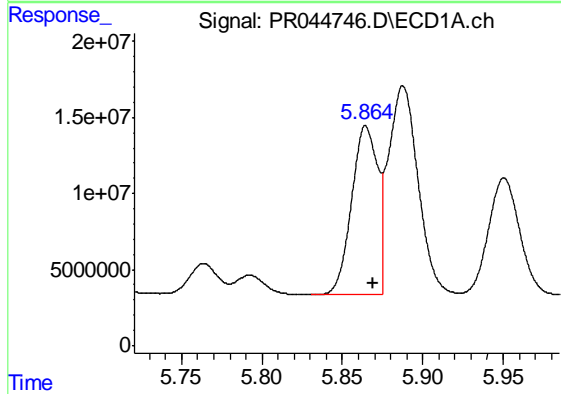
R.T.: 6.137 min  
 Delta R.T.: -0.004 min  
 Response: 75466587  
 Conc: 1286.79 ng/ml

Instrument :  
 ECD\_R  
 ClientSampled :  
 AR1660351



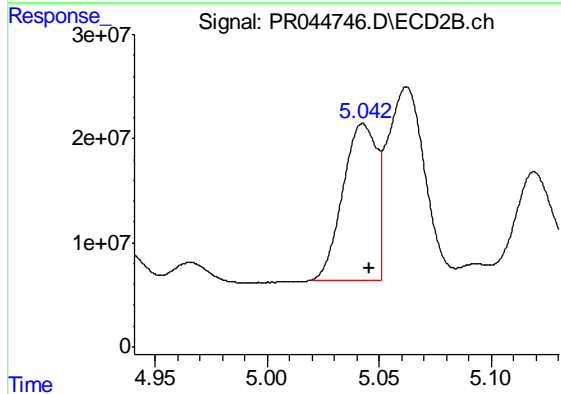
#15 AR-1232-5

R.T.: 5.495 min  
 Delta R.T.: -0.004 min  
 Response: 131668003  
 Conc: 1065.53 ng/ml



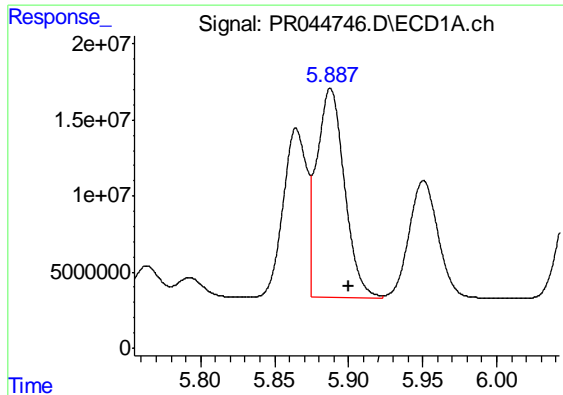
#16 AR-1242-1

R.T.: 5.865 min  
 Delta R.T.: -0.004 min  
 Response: 124531407  
 Conc: 585.89 ng/ml



#16 AR-1242-1

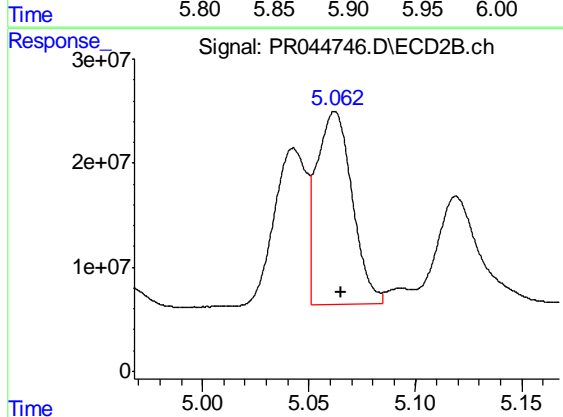
R.T.: 5.043 min  
 Delta R.T.: -0.003 min  
 Response: 159433633  
 Conc: 517.74 ng/ml



#17 AR-1242-2

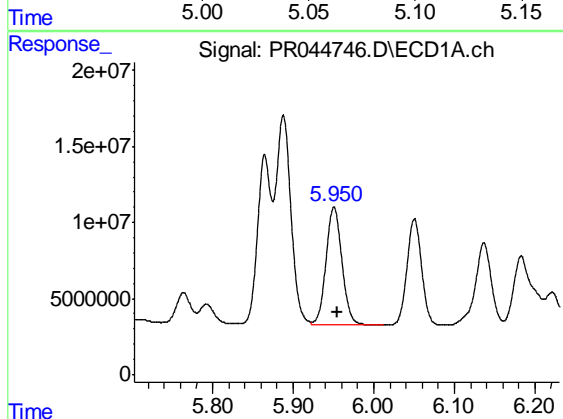
R.T.: 5.888 min  
 Delta R.T.: -0.012 min  
 Response: 178362072  
 Conc: 592.81 ng/ml

Instrument :  
 ECD\_R  
 ClientSampleId :  
 AR1660351



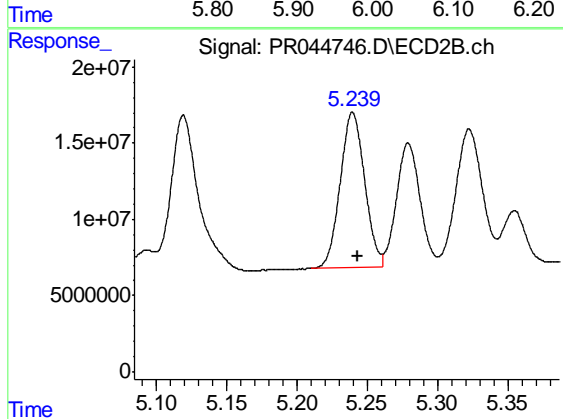
#17 AR-1242-2

R.T.: 5.062 min  
 Delta R.T.: -0.003 min  
 Response: 213327385  
 Conc: 499.50 ng/ml



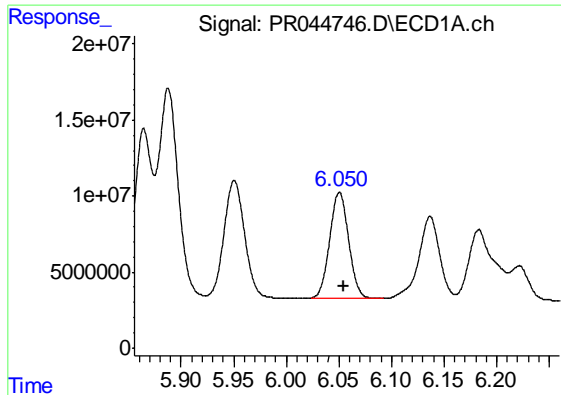
#18 AR-1242-3

R.T.: 5.951 min  
 Delta R.T.: -0.003 min  
 Response: 105284731  
 Conc: 584.95 ng/ml



#18 AR-1242-3

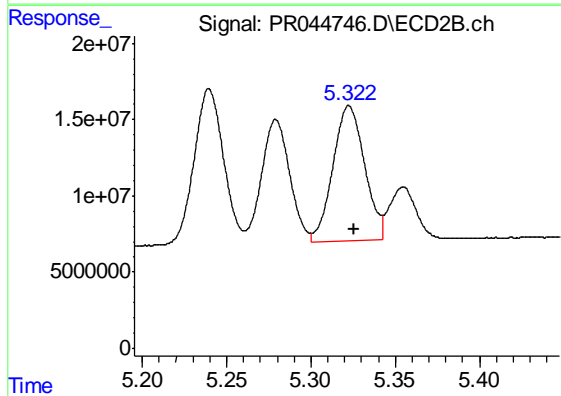
R.T.: 5.240 min  
 Delta R.T.: -0.004 min  
 Response: 122494424  
 Conc: 550.25 ng/ml



#19 AR-1242-4

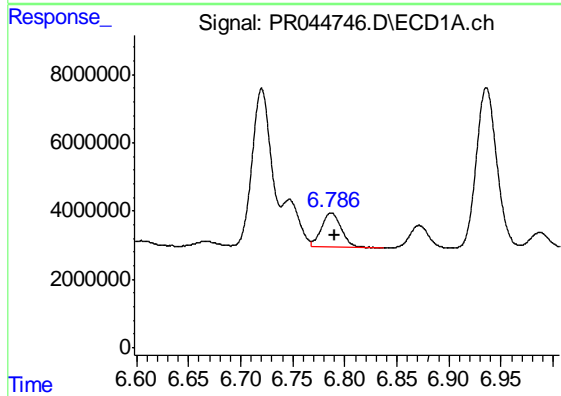
R.T.: 6.051 min  
 Delta R.T.: -0.004 min  
 Response: 87024826  
 Conc: 578.07 ng/ml

Instrument :  
 ECD\_R  
 ClientSampleId :  
 AR1660351



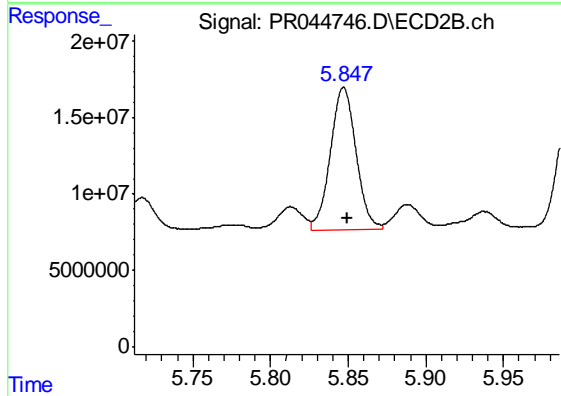
#19 AR-1242-4

R.T.: 5.323 min  
 Delta R.T.: -0.003 min  
 Response: 115563580  
 Conc: 536.35 ng/ml



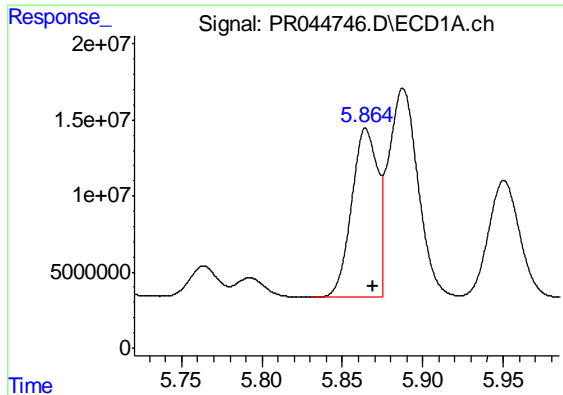
#20 AR-1242-5

R.T.: 6.787 min  
 Delta R.T.: -0.003 min  
 Response: 13564017  
 Conc: 77.44 ng/ml



#20 AR-1242-5

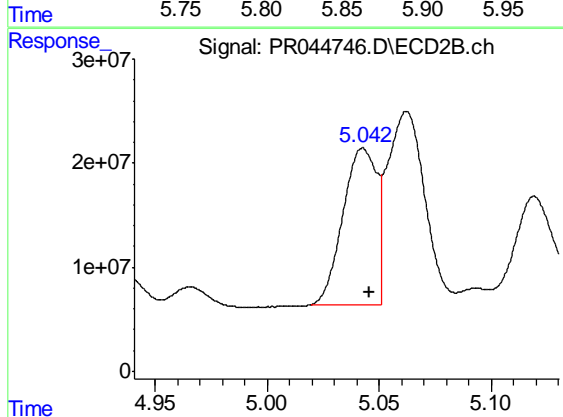
R.T.: 5.847 min  
 Delta R.T.: -0.003 min  
 Response: 107076067  
 Conc: 292.54 ng/ml



#21 AR-1248-1

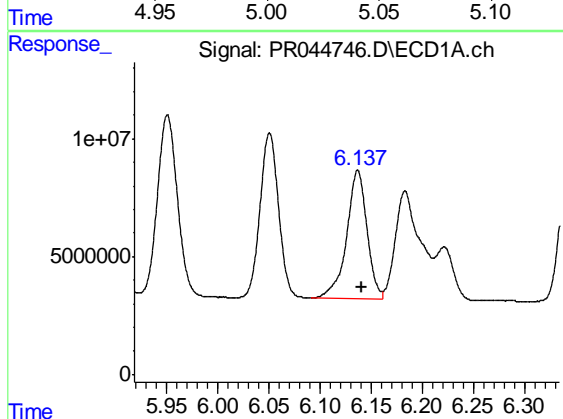
R.T.: 5.865 min  
 Delta R.T.: -0.004 min  
 Response: 124531407  
 Conc: 749.76 ng/ml

Instrument :  
 ECD\_R  
 ClientSampleId :  
 AR1660351



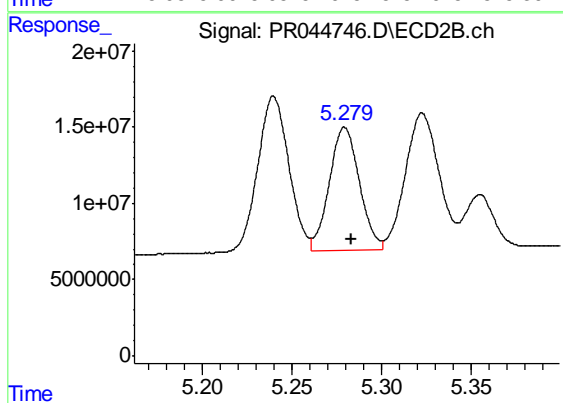
#21 AR-1248-1

R.T.: 5.043 min  
 Delta R.T.: -0.003 min  
 Response: 159433633  
 Conc: 646.94 ng/ml



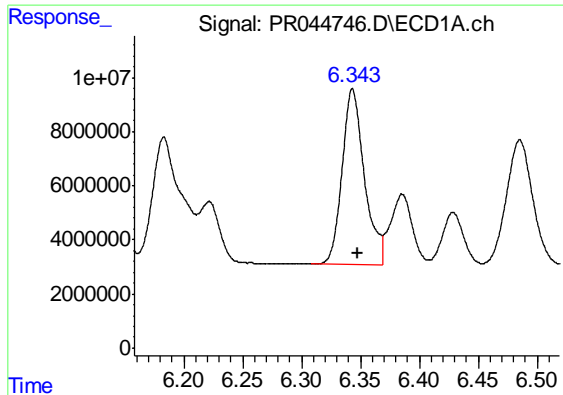
#22 AR-1248-2

R.T.: 6.137 min  
 Delta R.T.: -0.004 min  
 Response: 75466587  
 Conc: 337.45 ng/ml



#22 AR-1248-2

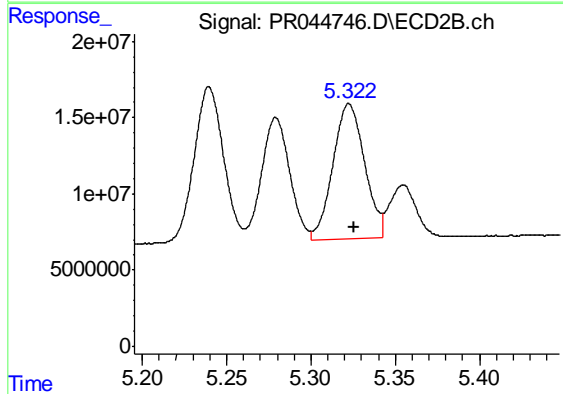
R.T.: 5.279 min  
 Delta R.T.: -0.004 min  
 Response: 93414313  
 Conc: 311.98 ng/ml



#23 AR-1248-3

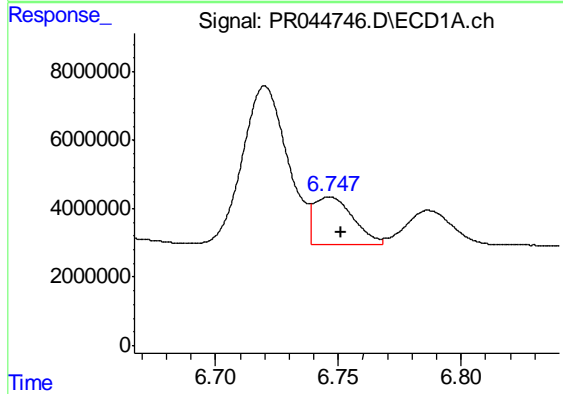
R.T.: 6.343 min  
 Delta R.T.: -0.004 min  
 Response: 85083806  
 Conc: 339.28 ng/ml

Instrument :  
 ECD\_R  
 ClientSampleId :  
 AR1660351



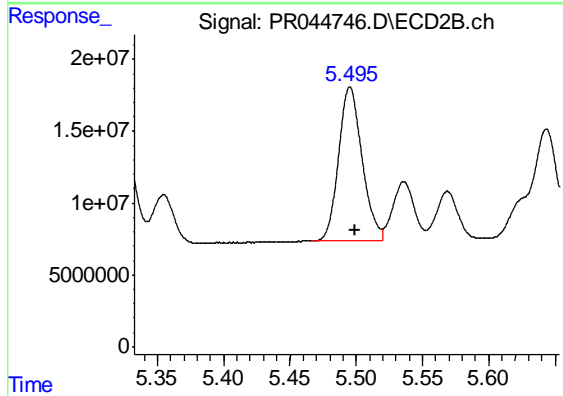
#23 AR-1248-3

R.T.: 5.323 min  
 Delta R.T.: -0.003 min  
 Response: 115563580  
 Conc: 370.72 ng/ml



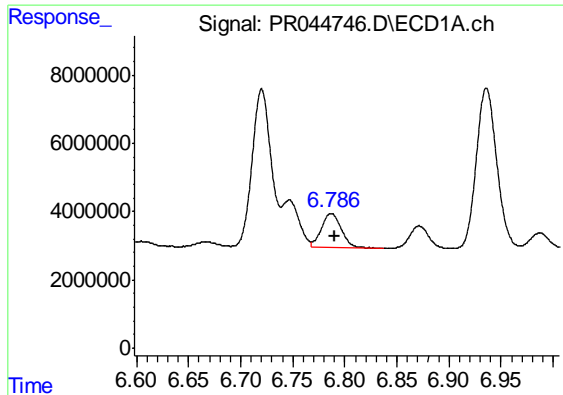
#24 AR-1248-4

R.T.: 6.747 min  
 Delta R.T.: -0.004 min  
 Response: 15265901  
 Conc: 50.01 ng/ml



#24 AR-1248-4

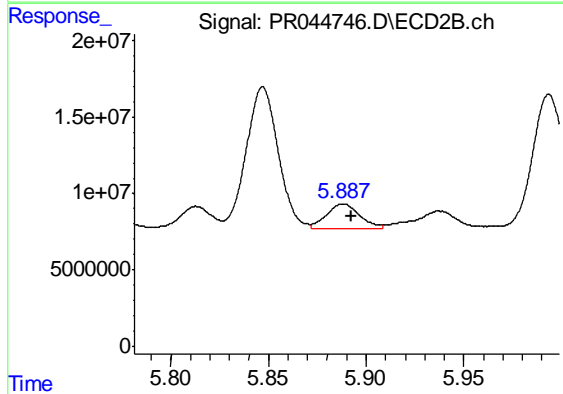
R.T.: 5.495 min  
 Delta R.T.: -0.004 min  
 Response: 131668003  
 Conc: 318.91 ng/ml



#25 AR-1248-5

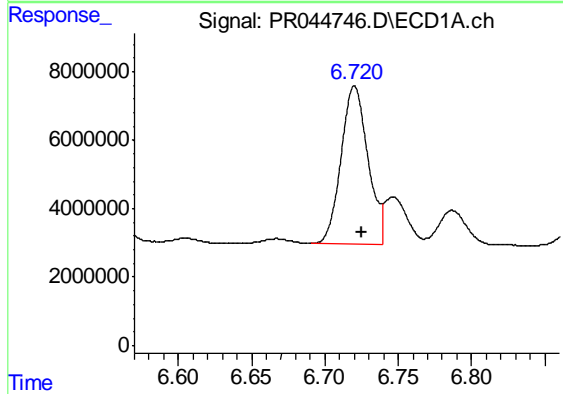
R.T.: 6.787 min  
 Delta R.T.: -0.003 min  
 Response: 13564017  
 Conc: 47.03 ng/ml

Instrument :  
 ECD\_R  
 ClientSampleId :  
 AR1660351



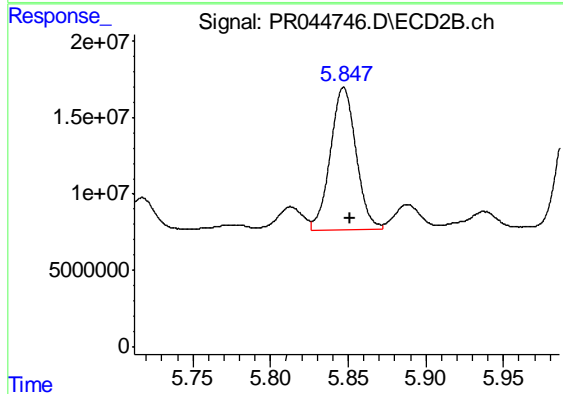
#25 AR-1248-5

R.T.: 5.888 min  
 Delta R.T.: -0.004 min  
 Response: 19213283  
 Conc: 39.03 ng/ml



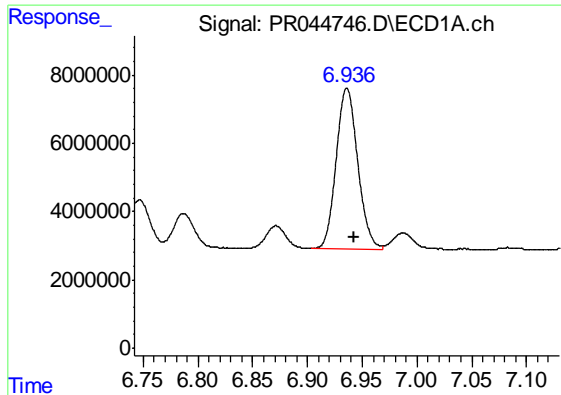
#26 AR-1254-1

R.T.: 6.720 min  
 Delta R.T.: -0.005 min  
 Response: 58783640  
 Conc: 193.48 ng/ml



#26 AR-1254-1

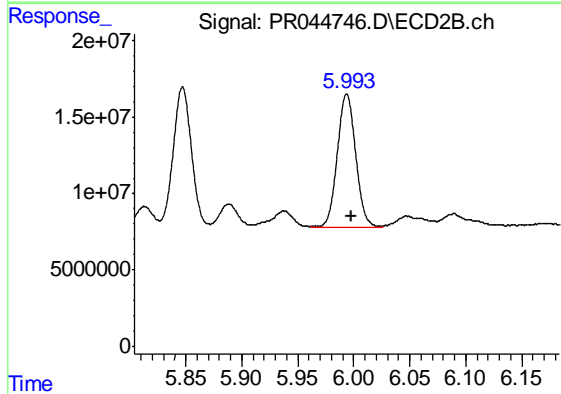
R.T.: 5.847 min  
 Delta R.T.: -0.004 min  
 Response: 107076067  
 Conc: 145.02 ng/ml



#27 AR-1254-2

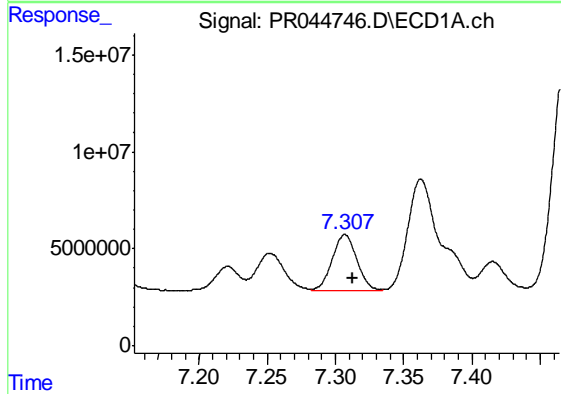
R.T.: 6.936 min  
 Delta R.T.: -0.006 min  
 Response: 64848387  
 Conc: 138.82 ng/ml

Instrument :  
 ECD\_R  
 ClientSampled :  
 AR1660351



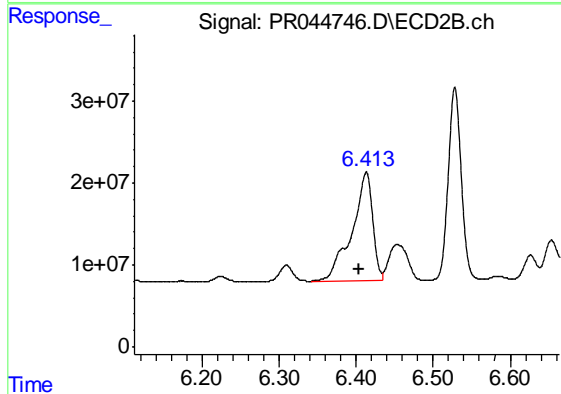
#27 AR-1254-2

R.T.: 5.994 min  
 Delta R.T.: -0.004 min  
 Response: 100190533  
 Conc: 148.00 ng/ml



#28 AR-1254-3

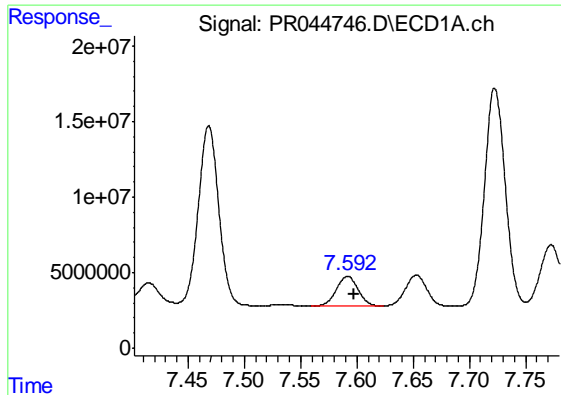
R.T.: 7.307 min  
 Delta R.T.: -0.005 min  
 Response: 36414600  
 Conc: 72.00 ng/ml



#28 AR-1254-3

R.T.: 6.413 min  
 Delta R.T.: 0.010 min  
 Response: 248236924  
 Conc: 220.96 ng/ml

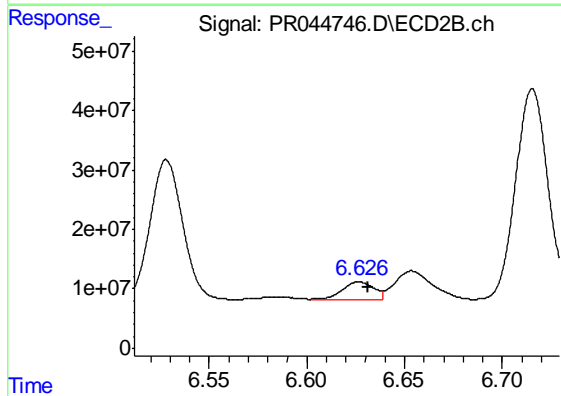




#29 AR-1254-4

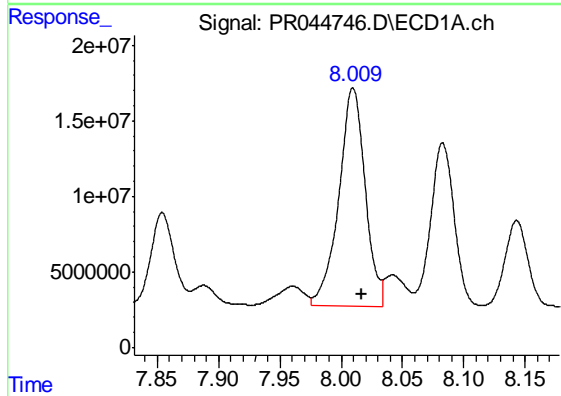
R.T.: 7.592 min  
 Delta R.T.: -0.005 min  
 Response: 26234494  
 Conc: 66.45 ng/ml

Instrument :  
 ECD\_R  
 ClientSampleId :  
 AR1660351



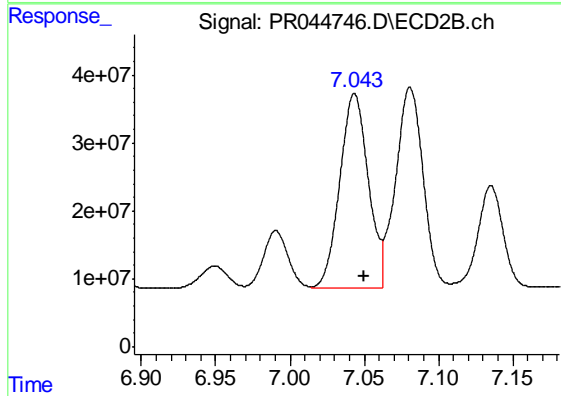
#29 AR-1254-4

R.T.: 6.627 min  
 Delta R.T.: -0.005 min  
 Response: 32988326  
 Conc: 38.87 ng/ml



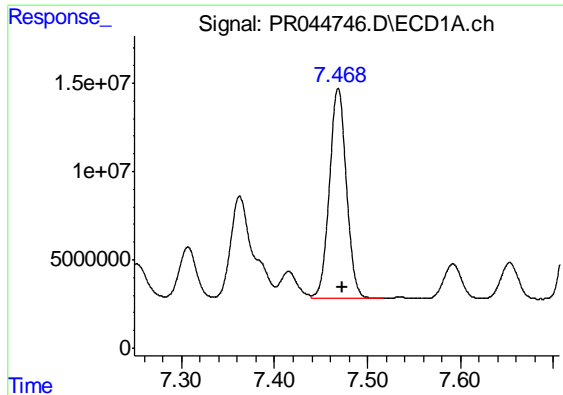
#30 AR-1254-5

R.T.: 8.010 min  
 Delta R.T.: -0.007 min  
 Response: 216089067  
 Conc: 501.23 ng/ml



#30 AR-1254-5

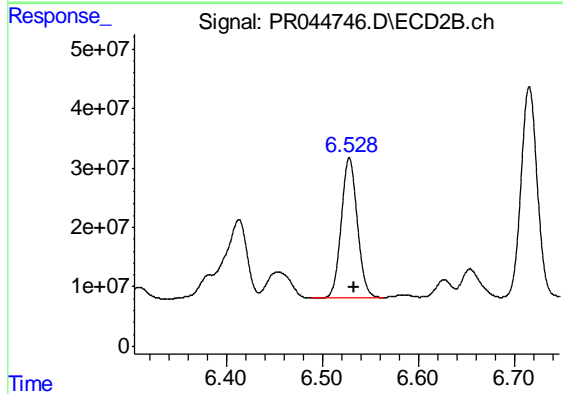
R.T.: 7.043 min  
 Delta R.T.: -0.006 min  
 Response: 380768653  
 Conc: 356.10 ng/ml



#31 AR-1260-1

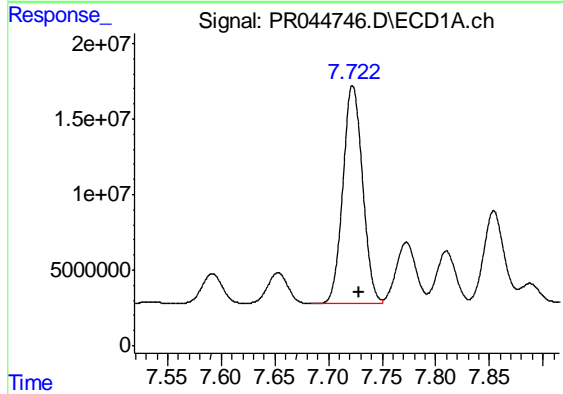
R.T.: 7.468 min  
 Delta R.T.: -0.004 min  
 Response: 151348241  
 Conc: 416.14 ng/ml

Instrument :  
 ECD\_R  
 ClientSampleId :  
 AR1660351



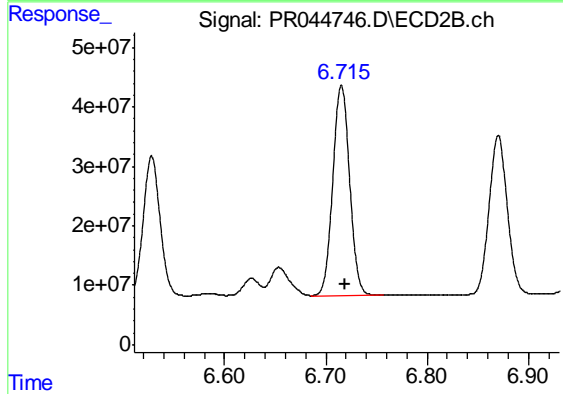
#31 AR-1260-1

R.T.: 6.528 min  
 Delta R.T.: -0.004 min  
 Response: 274136346  
 Conc: 367.93 ng/ml



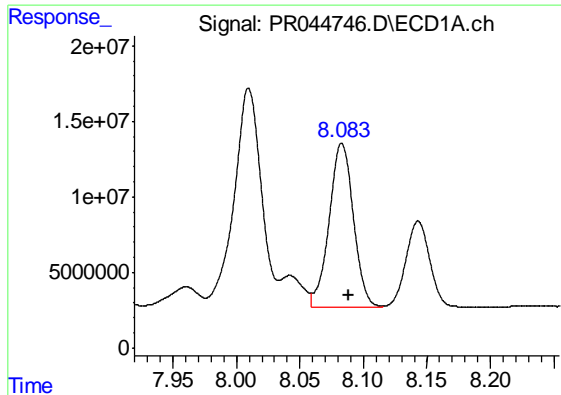
#32 AR-1260-2

R.T.: 7.723 min  
 Delta R.T.: -0.005 min  
 Response: 184873952  
 Conc: 407.61 ng/ml



#32 AR-1260-2

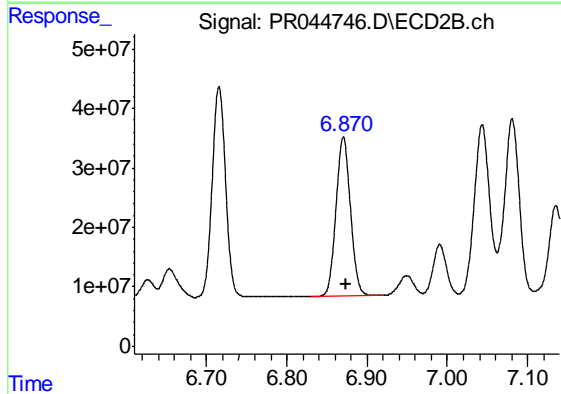
R.T.: 6.716 min  
 Delta R.T.: -0.004 min  
 Response: 407720601  
 Conc: 360.54 ng/ml



#33 AR-1260-3

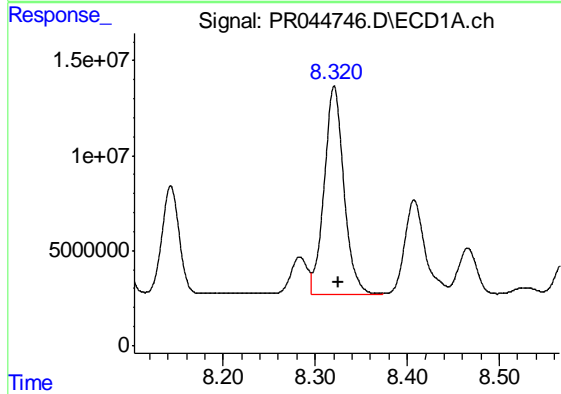
R.T.: 8.083 min  
Delta R.T.: -0.005 min  
Response: 143584414  
Conc: 405.54 ng/ml

Instrument :  
ECD\_R  
ClientSampleId :  
AR1660351



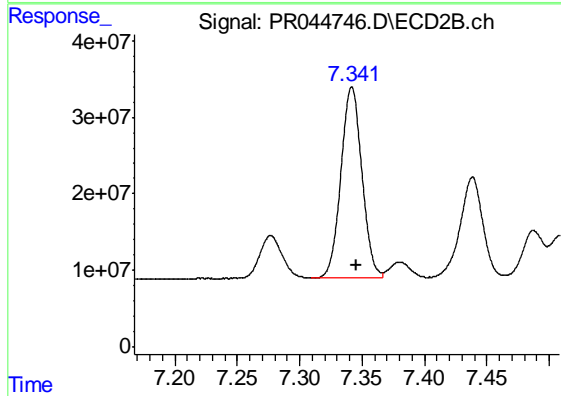
#33 AR-1260-3

R.T.: 6.870 min  
Delta R.T.: -0.004 min  
Response: 333128210  
Conc: 365.20 ng/ml



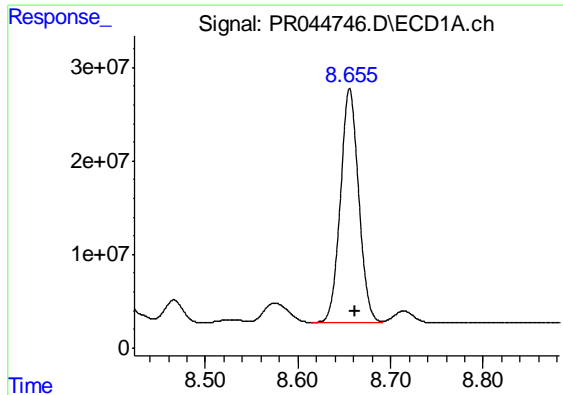
#34 AR-1260-4

R.T.: 8.321 min  
Delta R.T.: -0.005 min  
Response: 161660629  
Conc: 398.29 ng/ml



#34 AR-1260-4

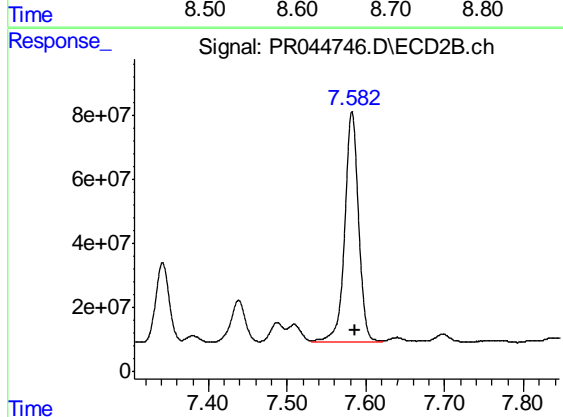
R.T.: 7.342 min  
Delta R.T.: -0.004 min  
Response: 291094718  
Conc: 354.05 ng/ml



#35 AR-1260-5

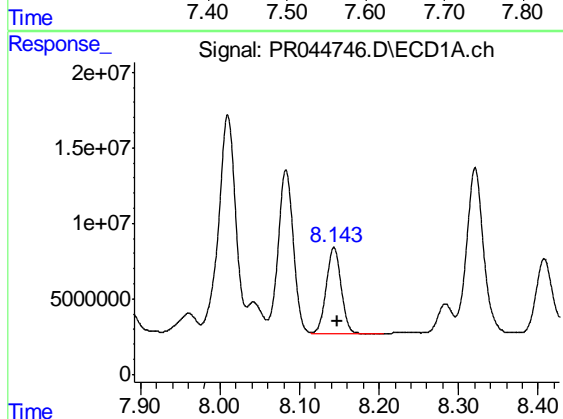
R.T.: 8.656 min  
 Delta R.T.: -0.006 min  
 Response: 342859089  
 Conc: 390.11 ng/ml

Instrument :  
 ECD\_R  
 ClientSampleId :  
 AR1660351



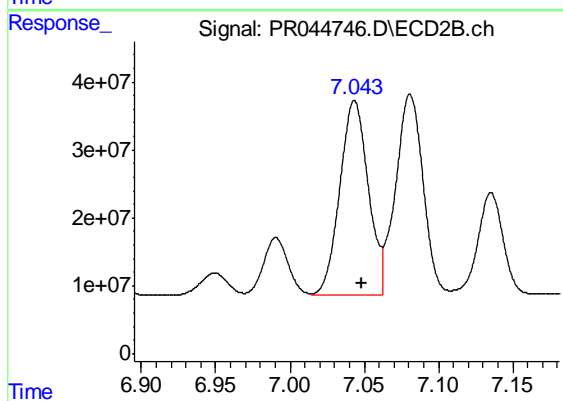
#35 AR-1260-5

R.T.: 7.582 min  
 Delta R.T.: -0.005 min  
 Response: 876234861  
 Conc: 354.95 ng/ml



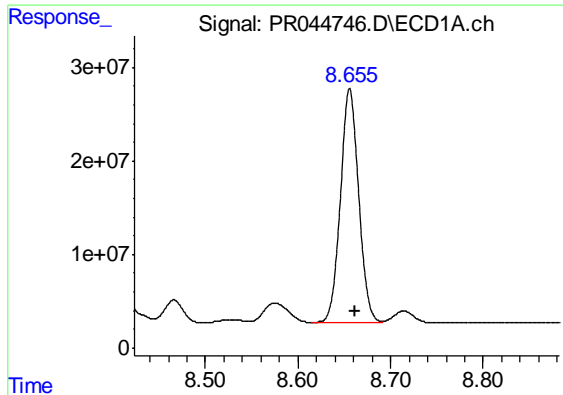
#36 AR-1262-1

R.T.: 8.143 min  
 Delta R.T.: -0.005 min  
 Response: 72971926  
 Conc: 349.97 ng/ml



#36 AR-1262-1

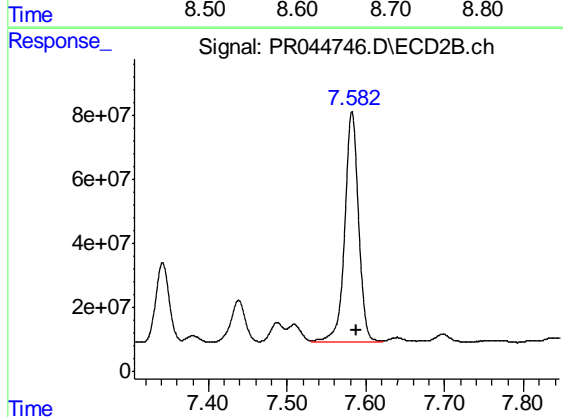
R.T.: 7.043 min  
 Delta R.T.: -0.005 min  
 Response: 380768653  
 Conc: 640.12 ng/ml



#37 AR-1262-2

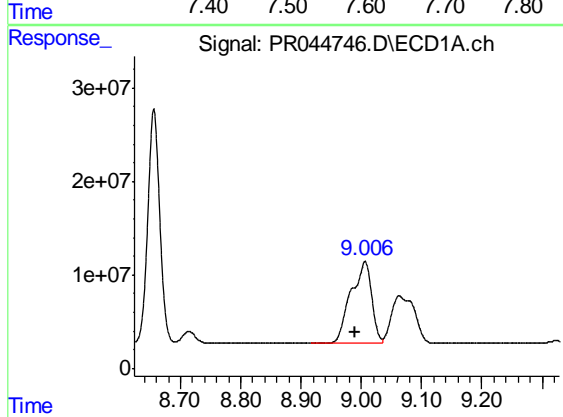
R.T.: 8.656 min  
Delta R.T.: -0.007 min  
Response: 342859089  
Conc: 339.50 ng/ml

Instrument :  
ECD\_R  
ClientSampleId :  
AR1660351



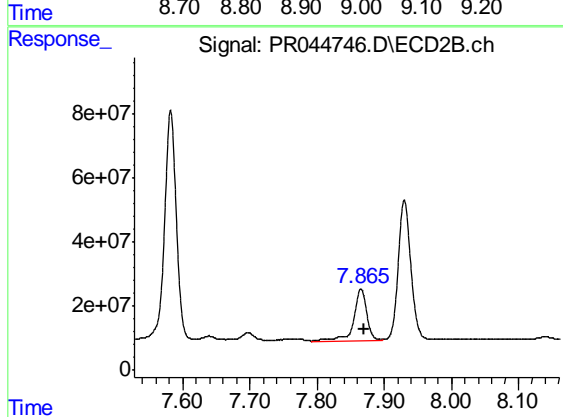
#37 AR-1262-2

R.T.: 7.582 min  
Delta R.T.: -0.005 min  
Response: 876234861  
Conc: 322.33 ng/ml



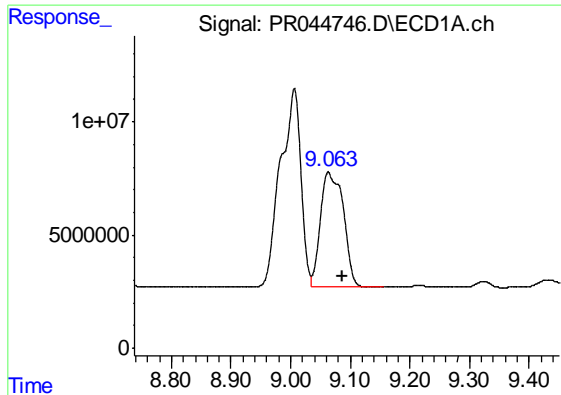
#38 AR-1262-3

R.T.: 9.006 min  
Delta R.T.: 0.016 min  
Response: 209743346  
Conc: 311.85 ng/ml



#38 AR-1262-3

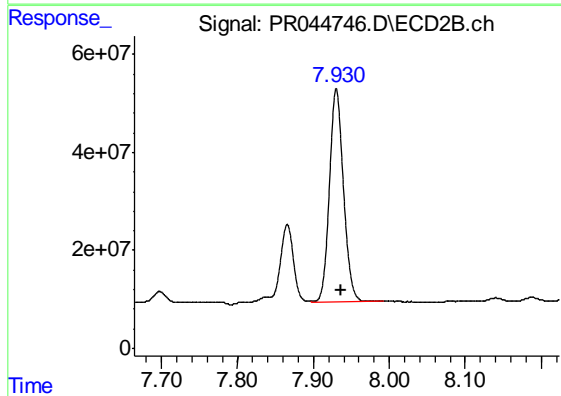
R.T.: 7.866 min  
Delta R.T.: -0.005 min  
Response: 214136023  
Conc: 194.73 ng/ml



#39 AR-1262-4

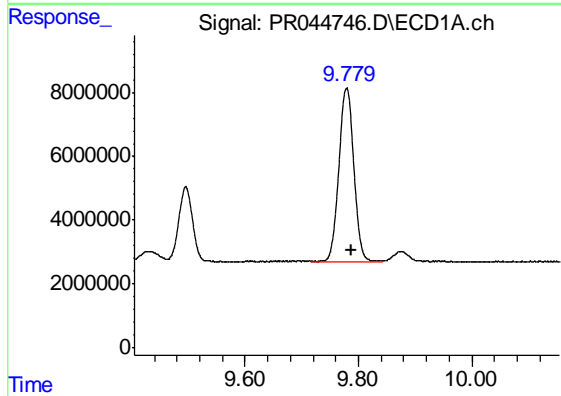
R.T.: 9.063 min  
Delta R.T.: -0.024 min  
Response: 135533851  
Conc: 263.43 ng/ml

Instrument :  
ECD\_R  
ClientSampleId :  
AR1660351



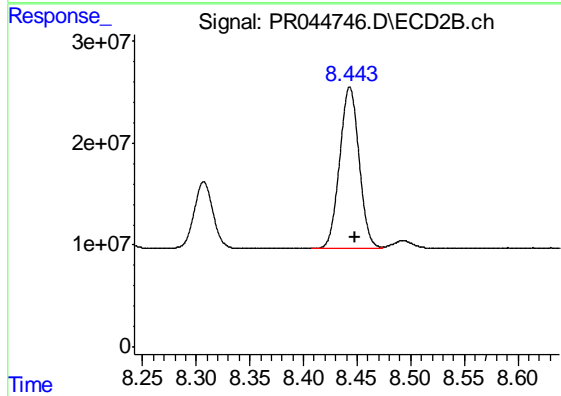
#39 AR-1262-4

R.T.: 7.930 min  
Delta R.T.: -0.006 min  
Response: 563570534  
Conc: 312.20 ng/ml



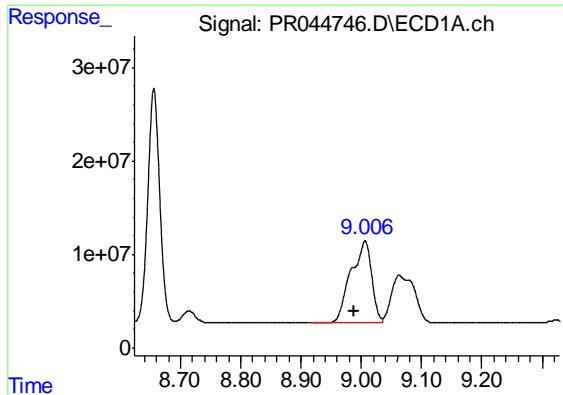
#40 AR-1262-5

R.T.: 9.779 min  
Delta R.T.: -0.008 min  
Response: 99091198  
Conc: 264.80 ng/ml



#40 AR-1262-5

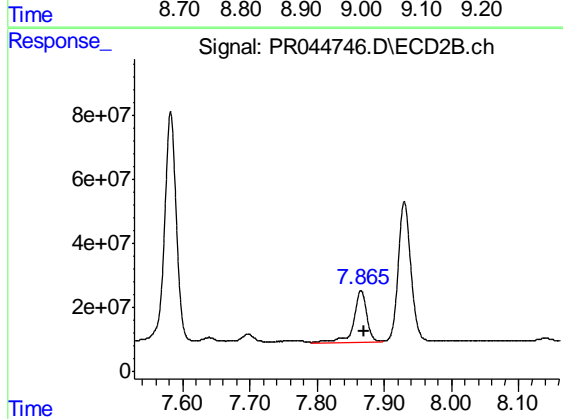
R.T.: 8.443 min  
Delta R.T.: -0.005 min  
Response: 200239516  
Conc: 240.70 ng/ml



#41 AR-1268-1

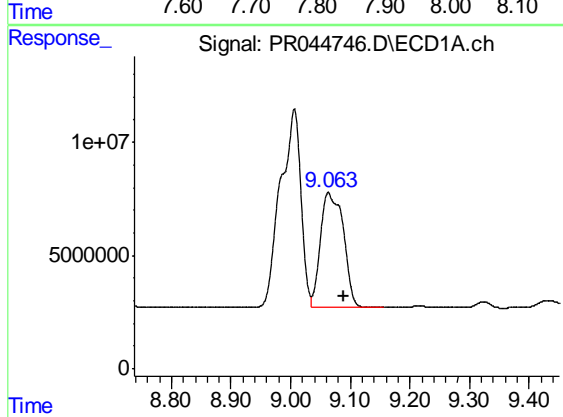
R.T.: 9.006 min  
 Delta R.T.: 0.018 min  
 Response: 209743346  
 Conc: 184.55 ng/ml

Instrument :  
 ECD\_R  
 ClientSampleId :  
 AR1660351



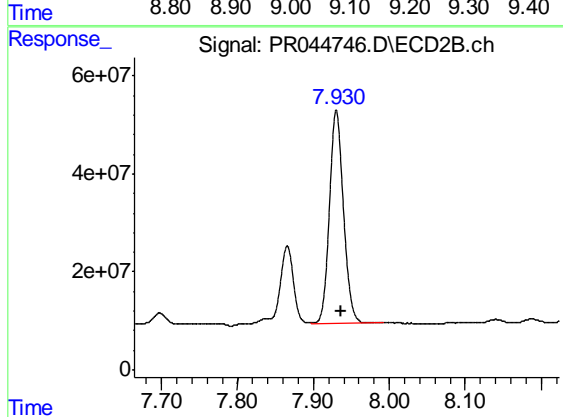
#41 AR-1268-1

R.T.: 7.866 min  
 Delta R.T.: -0.005 min  
 Response: 214136023  
 Conc: 72.34 ng/ml



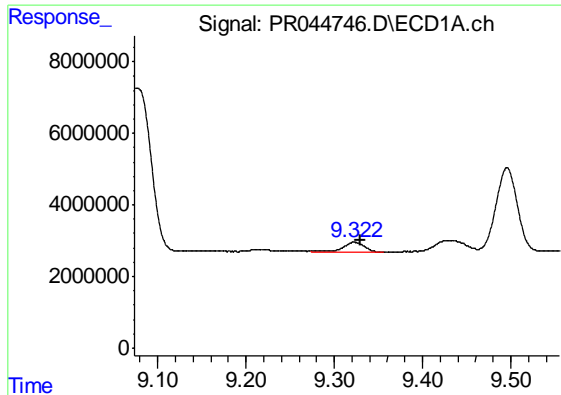
#42 AR-1268-2

R.T.: 9.063 min  
 Delta R.T.: -0.026 min  
 Response: 135533851  
 Conc: 125.96 ng/ml



#42 AR-1268-2

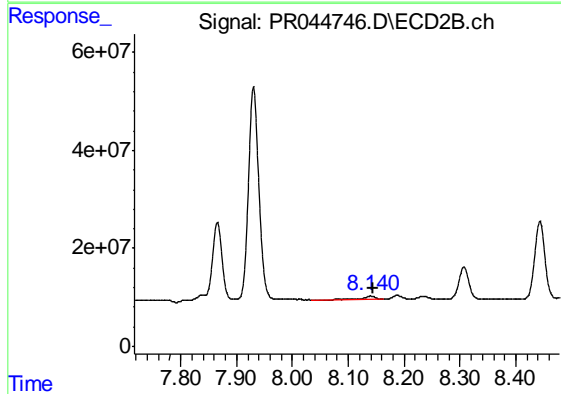
R.T.: 7.930 min  
 Delta R.T.: -0.006 min  
 Response: 563570534  
 Conc: 223.55 ng/ml



#43 AR-1268-3

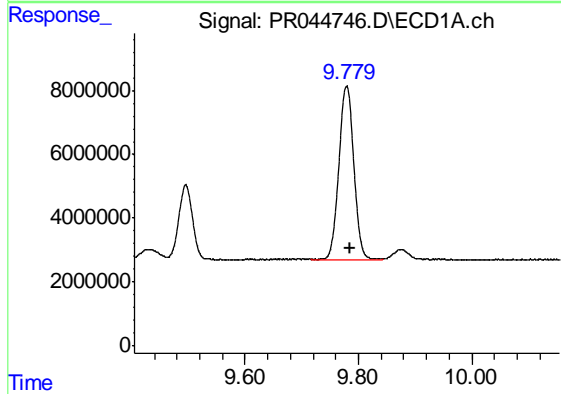
R.T.: 9.323 min  
 Delta R.T.: -0.008 min  
 Response: 4616550  
 Conc: 5.10 ng/ml

Instrument :  
 ECD\_R  
 ClientSampleId :  
 AR1660351



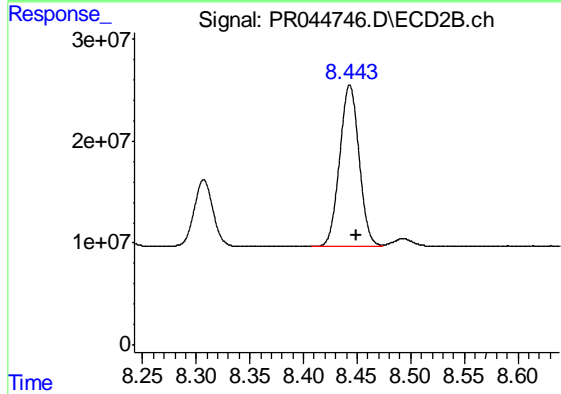
#43 AR-1268-3

R.T.: 8.140 min  
 Delta R.T.: -0.005 min  
 Response: 9768847  
 Conc: 4.60 ng/ml



#44 AR-1268-4

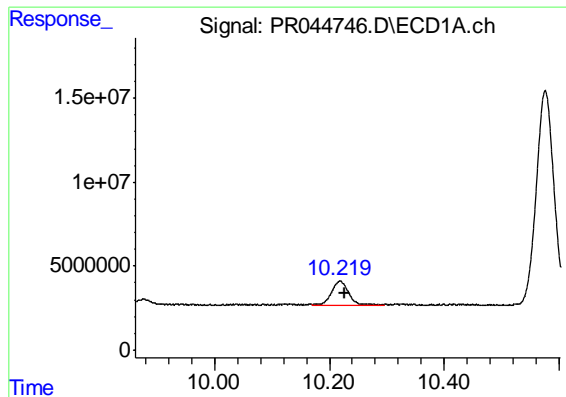
R.T.: 9.779 min  
 Delta R.T.: -0.006 min  
 Response: 99091198  
 Conc: 247.30 ng/ml



#44 AR-1268-4

R.T.: 8.443 min  
 Delta R.T.: -0.006 min  
 Response: 200239516  
 Conc: 227.22 ng/ml

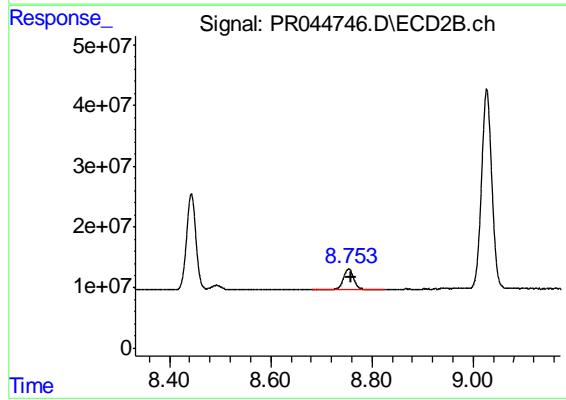




#45 AR-1268-5

R.T.: 10.219 min  
Delta R.T.: -0.007 min  
Response: 27806436  
Conc: 8.76 ng/ml

Instrument :  
ECD\_R  
ClientSampleId :  
AR1660351



#45 AR-1268-5

R.T.: 8.754 min  
Delta R.T.: -0.006 min  
Response: 47612064  
Conc: 7.75 ng/ml