

Data Path : Z:\pestpcbsrv\HPCHEM1\ECD\_R\Data\PR031319\  
 Data File : PR036143.D  
 Signal(s) : Signal #1: ECD1A.ch Signal #2: ECD2B.ch  
 Acq On : 13 Mar 2019 23:47  
 Operator : SM\SJ  
 Sample : K1830-01MSD  
 Misc :  
 ALS Vial : 35 Sample Multiplier: 1

Instrument :  
 ECD\_R  
 ClientSampleId :  
 BALLFIELD-SS-03072019MSD

Integration File signal 1: autoint1.e  
 Integration File signal 2: autoint2.e  
 Quant Time: Mar 14 01:15:59 2019  
 Quant Method : Z:\pestpcbsrv\HPCHEM1\ECD\_R\Method\PR030119.M  
 Quant Title : GC EXTRACTABLES  
 QLast Update : Thu Mar 07 10:54:32 2019  
 Response via : Initial Calibration  
 Integrator: ChemStation

Volume Inj. : 2 µl  
 Signal #1 Phase : ZB-MR1 Signal #2 Phase: ZB-MR2  
 Signal #1 Info : 30Mx0.32mmx 0.50µ Signal #2 Info : 30M x 0.32mm x 0.25µm

Compound	RT#1	RT#2	Resp#1	Resp#2	ng/ml	ng/ml
System Monitoring Compounds						
1) SA Tetrachlo...	4.408	3.482	26887293	85354380	16.918	16.252
2) SA Decachlor...	10.066	8.349	25990316	92910454	16.252	14.155
Target Compounds						
3) L1 AR-1016-1	5.570	4.536	10343692	34449776	193.326	185.148
4) L1 AR-1016-2	5.592	4.552	16321874	50843543	186.766	175.347
5) L1 AR-1016-3	5.654	4.724	9635253	26364713	182.123	172.245
6) L1 AR-1016-4	5.752	4.765	7742928	20181781	180.000	167.787
7) L1 AR-1016-5	6.044	4.973	8064178	26065834	179.792	160.758
8) L2 AR-1221-1	0.000	3.688	0	2968536	N.D.	40.819 #
9) L2 AR-1221-2	0.000	3.773	0	4111470	N.D.	80.305 #
10) L2 AR-1221-3	4.779	3.846	5499302	15227821	98.887	85.430
11) L3 AR-1232-1	4.779	3.846	5499302	15227821	176.377	155.730
12) L3 AR-1232-2	5.304	4.552	7568280	50843543	450.730	433.471
13) L3 AR-1232-3	5.592	4.724	16321874	26364713	464.661	444.777
14) L3 AR-1232-4	5.752	4.806	7742928	24690541	452.503	481.830
15) L3 AR-1232-5	5.840	4.973	7146305	26065834	511.319	446.197
16) L4 AR-1242-1	5.570	4.536	10343692	34449776	236.071	231.547
17) L4 AR-1242-2	5.592	4.552	16321874	50843543	238.289	217.416
18) L4 AR-1242-3	5.654	4.724	9635253	26364713	230.542	219.444
19) L4 AR-1242-4	5.752	4.806	7742928	24690541	225.383	215.822
20) L4 AR-1242-5	0.000	5.315	0	21634456	N.D.	122.585 #
21) L5 AR-1248-1	5.570	4.536	10343692	34449776	294.975	286.151
22) L5 AR-1248-2	5.840	4.765	7146305	20181781	136.074	122.544
23) L5 AR-1248-3	6.044	4.806	8064178	24690541	135.984	145.898
24) L5 AR-1248-4	6.417	4.973	7003455	26065834	101.174	111.485
25) L5 AR-1248-5	0.000	5.356	0	3298206	N.D.	13.940 #
26) L6 AR-1254-1	6.417	5.315	7003455	21634456	111.608	72.939 #
27) L6 AR-1254-2	6.632	5.460	6689715	21178389	73.469	81.249
28) L6 AR-1254-3	6.999	5.868	3660818	40169604	35.159	90.576 #
29) L6 AR-1254-4	7.282	6.080	2710177	4654754	34.606	14.853 #
30) L6 AR-1254-5	7.699	6.488	25076150	82591744	258.500	197.298
31) L7 AR-1260-1	7.160	5.981	25452430	55089537	262.117	151.276 #
32) L7 AR-1260-2	7.415	6.167	18011565	78256318	156.506	149.811
33) L7 AR-1260-3	7.772	6.316	11870119	64717400	161.274	147.856
34) L7 AR-1260-4	7.997	6.780	14493210	48046374	153.613	155.181
35) L7 AR-1260-5	8.313	7.021	26521894	138.7E6	157.279	153.557
36) L8 AR-1262-1	7.772	6.578	11870119	29390824	110.769	145.932 #
37) L8 AR-1262-2	8.313	7.021	26521894	138.7E6	133.314	133.099
38) L8 AR-1262-3	8.634	7.298	17927038	26948233	132.255	65.837 #
39) L8 AR-1262-4	8.687	7.362	10167163	90881915	98.237	125.695 #
40) L8 AR-1262-5	9.345	7.853	7103732	27594567	100.072	83.992
41) L9 AR-1268-1	8.634	7.298	17927038	26948233	74.424	21.316 #

Data Path : Z:\pestpcbsrv\HPCHEM1\ECD\_R\Data\PR031319\  
 Data File : PR036143.D  
 Signal(s) : Signal #1: ECD1A.ch Signal #2: ECD2B.ch  
 Acq On : 13 Mar 2019 23:47  
 Operator : SM\SJ  
 Sample : K1830-01MSD  
 Misc :  
 ALS Vial : 35 Sample Multiplier: 1

**Instrument :**  
 ECD\_R  
**ClientSampleId :**  
 BALLFIELD-SS-03072019MSD

Integration File signal 1: autoint1.e  
 Integration File signal 2: autoint2.e  
 Quant Time: Mar 14 01:15:59 2019  
 Quant Method : Z:\pestpcbsrv\HPCHEM1\ECD\_R\Method\PR030119.M  
 Quant Title : GC EXTRACTABLES  
 QLast Update : Thu Mar 07 10:54:32 2019  
 Response via : Initial Calibration  
 Integrator: ChemStation

Volume Inj. : 2 µl  
 Signal #1 Phase : ZB-MR1 Signal #2 Phase: ZB-MR2  
 Signal #1 Info : 30Mx0.32mmx 0.50µ Signal #2 Info : 30M x 0.32mm x 0.25µm

	Compound	RT#1	RT#2	Resp#1	Resp#2	ng/ml	ng/ml
42)	L9 AR-1268-2	8.687	7.362	10167163	90881915	46.556	80.151 #
43)	L9 AR-1268-3	0.000	7.562	0	3030299	N.D.	3.089 #
44)	L9 AR-1268-4	9.345	7.853	7103732	27594567	93.577	77.145
45)	L9 AR-1268-5	9.743	8.121	2461917	10420964	4.475	3.916

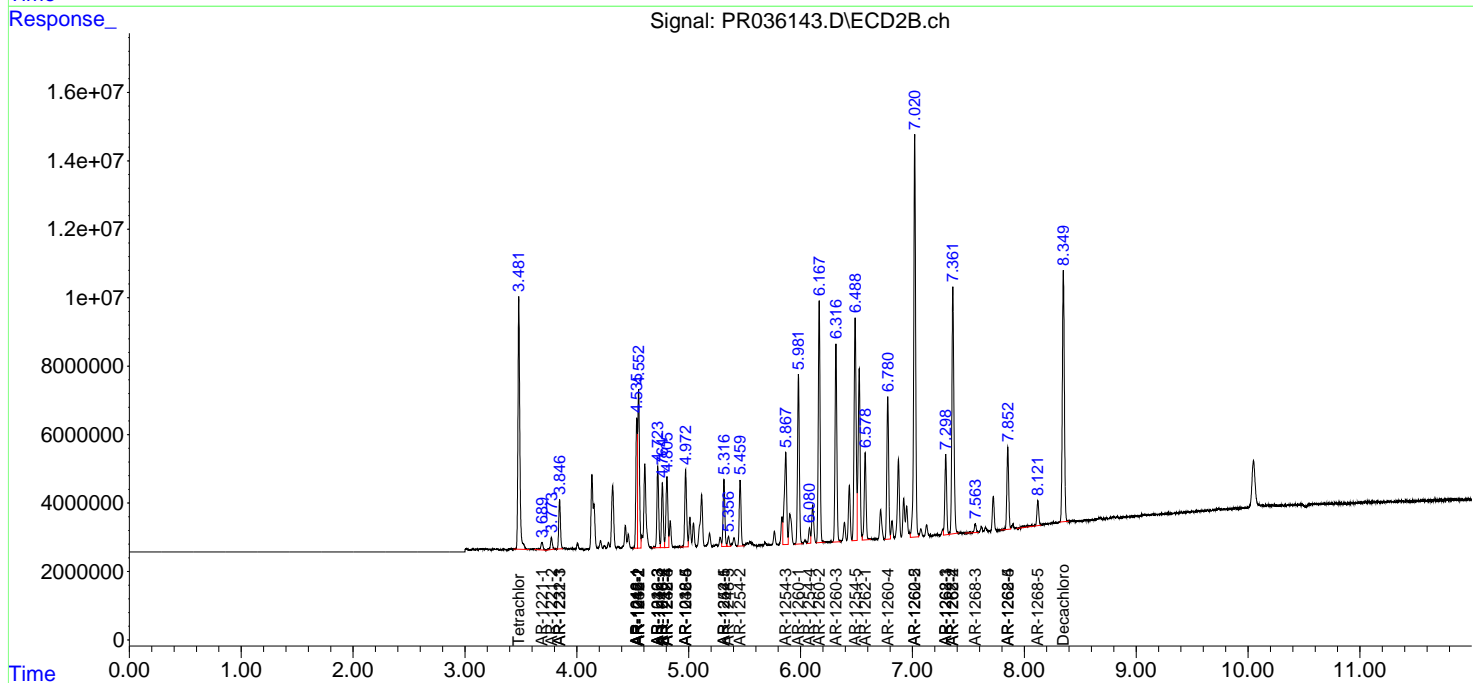
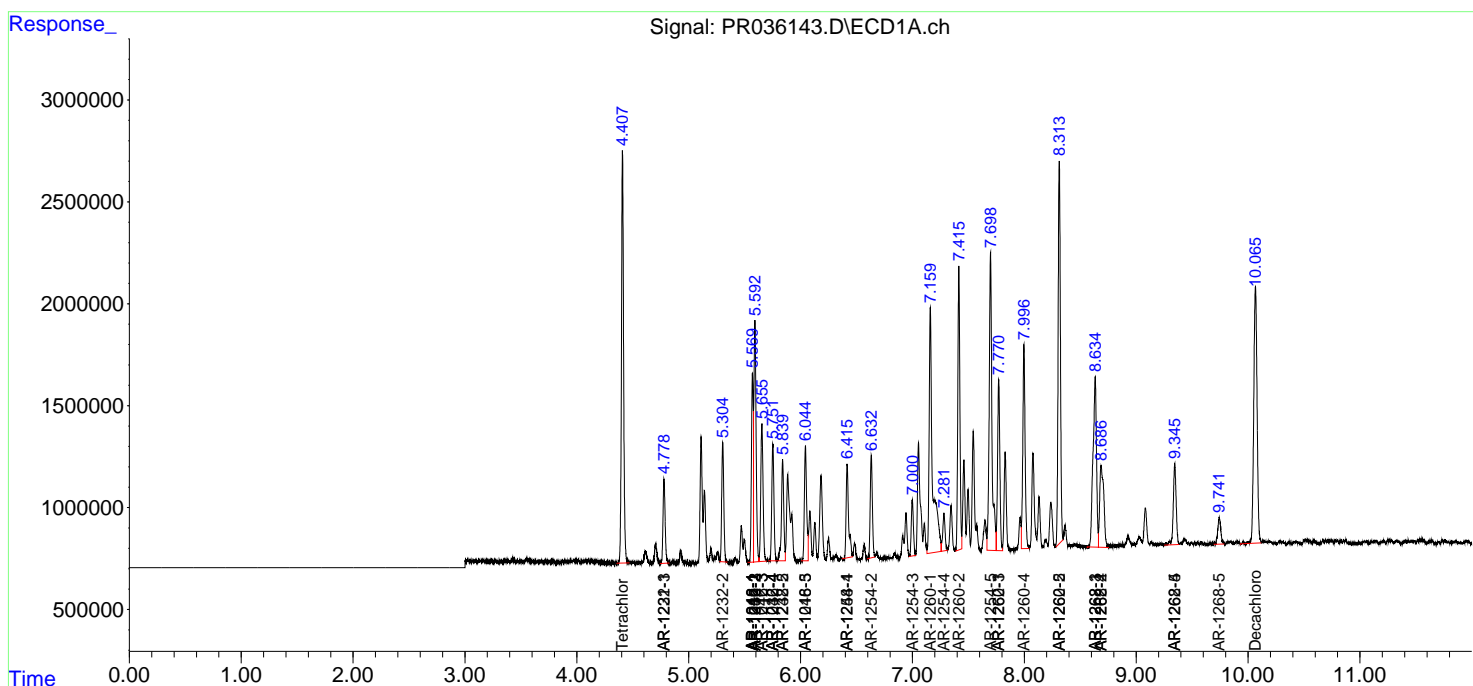
(f)=RT Delta > 1/2 Window (#)=Amounts differ by > 25% (m)=manual int.

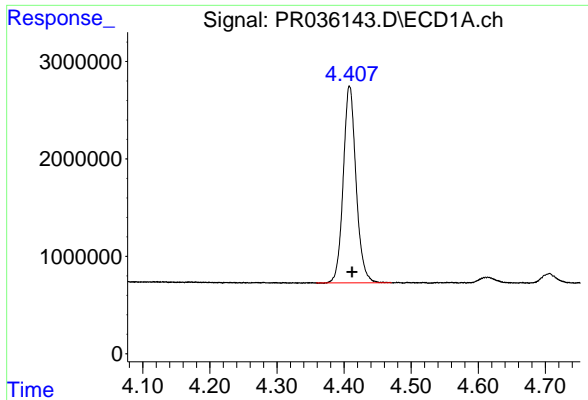
Data Path : Z:\pestpcbsrv\HPCHEM1\ECD\_R\Data\PR031319\  
 Data File : PR036143.D  
 Signal(s) : Signal #1: ECD1A.ch Signal #2: ECD2B.ch  
 Acq On : 13 Mar 2019 23:47  
 Operator : SM\SJ  
 Sample : K1830-01MSD  
 Misc :  
 ALS Vial : 35 Sample Multiplier: 1

Instrument :  
 ECD\_R  
 Client Sampled :  
 BALLFIELD-SS-03072019MSD

Integration File signal 1: autoint1.e  
 Integration File signal 2: autoint2.e  
 Quant Time: Mar 14 01:15:59 2019  
 Quant Method : Z:\pestpcbsrv\HPCHEM1\ECD\_R\Method\PR030119.M  
 Quant Title : GC EXTRACTABLES  
 QLast Update : Thu Mar 07 10:54:32 2019  
 Response via : Initial Calibration  
 Integrator: ChemStation

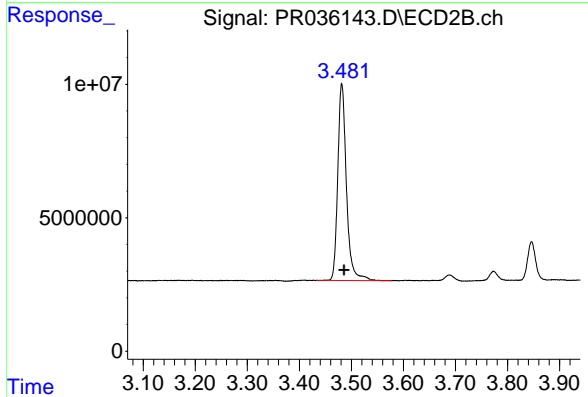
Volume Inj. : 2 µl  
 Signal #1 Phase : ZB-MR1 Signal #2 Phase: ZB-MR2  
 Signal #1 Info : 30Mx0.32mmx 0.50µ Signal #2 Info : 30M x 0.32mm x 0.25µm



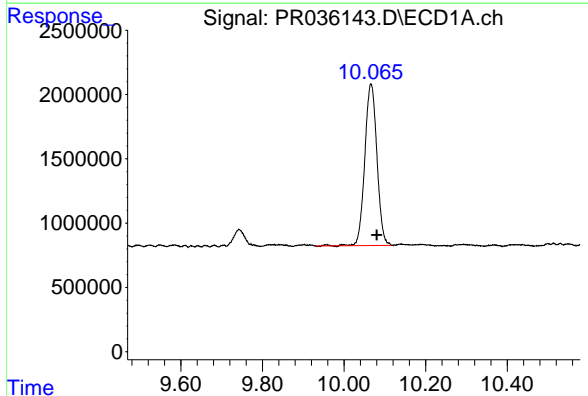


#1 Tetrachloro-m-xylene  
 R.T.: 4.408 min  
 Delta R.T.: -0.004 min  
 Response: 26887293  
 Conc: 16.92 ng/ml

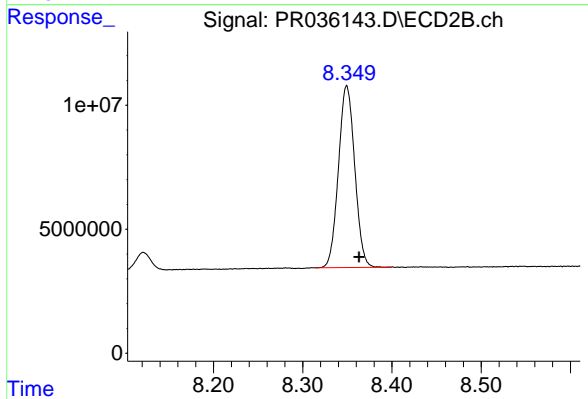
**Instrument :**  
 ECD\_R  
**ClientSampleId :**  
 BALLFIELD-SS-03072019MSD



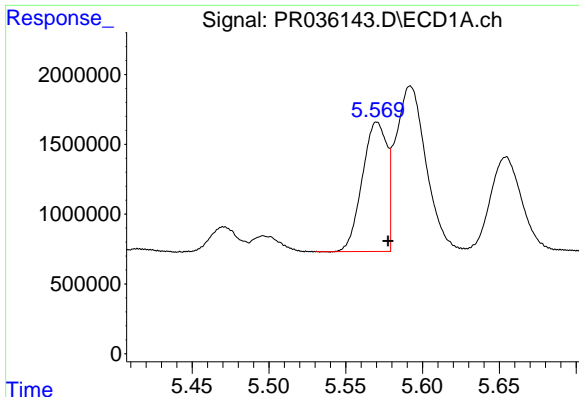
#1 Tetrachloro-m-xylene  
 R.T.: 3.482 min  
 Delta R.T.: -0.004 min  
 Response: 85354380  
 Conc: 16.25 ng/ml



#2 Decachlorobiphenyl  
 R.T.: 10.066 min  
 Delta R.T.: -0.014 min  
 Response: 25990316  
 Conc: 16.25 ng/ml



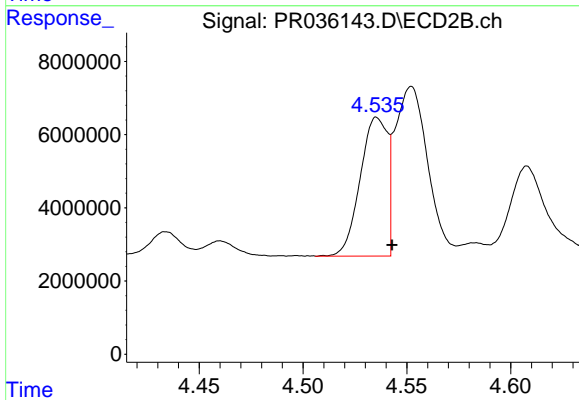
#2 Decachlorobiphenyl  
 R.T.: 8.349 min  
 Delta R.T.: -0.014 min  
 Response: 92910454  
 Conc: 14.16 ng/ml



#3 AR-1016-1

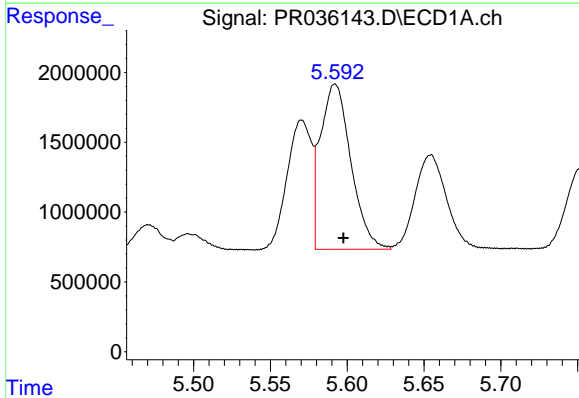
R.T.: 5.570 min  
Delta R.T.: -0.007 min  
Response: 10343692  
Conc: 193.33 ng/ml

Instrument :  
ECD\_R  
ClientSampleId :  
BALLFIELD-SS-03072019MSD



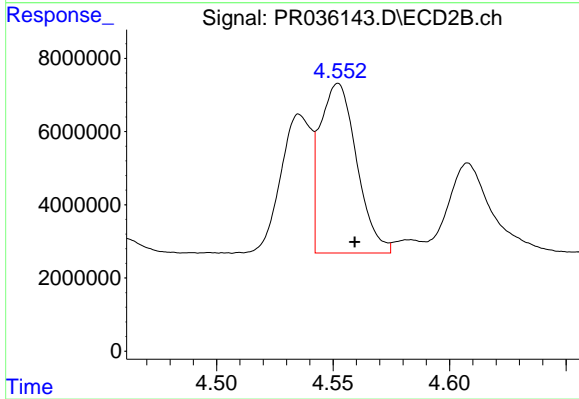
#3 AR-1016-1

R.T.: 4.536 min  
Delta R.T.: -0.007 min  
Response: 34449776  
Conc: 185.15 ng/ml



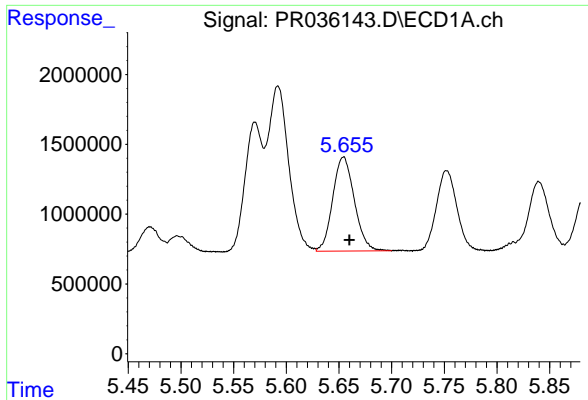
#4 AR-1016-2

R.T.: 5.592 min  
Delta R.T.: -0.005 min  
Response: 16321874  
Conc: 186.77 ng/ml



#4 AR-1016-2

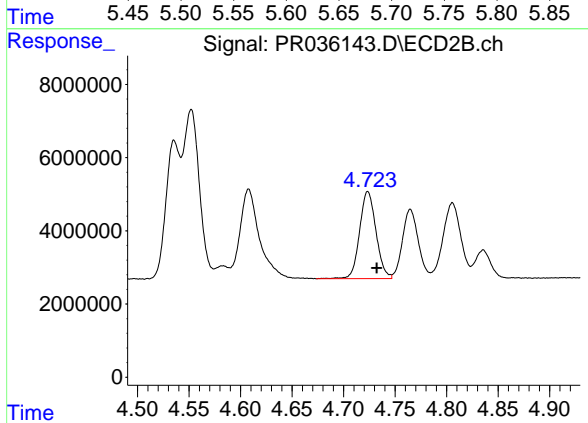
R.T.: 4.552 min  
Delta R.T.: -0.007 min  
Response: 50843543  
Conc: 175.35 ng/ml



#5 AR-1016-3

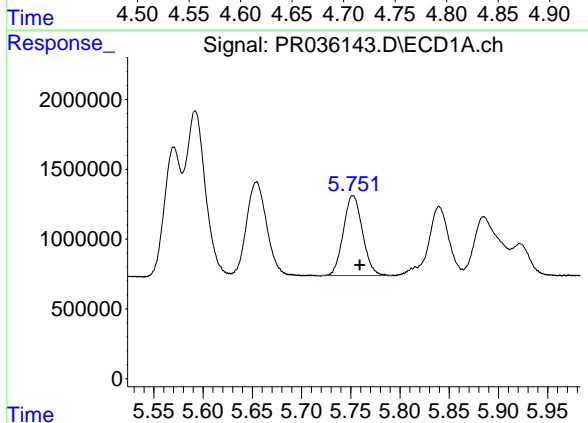
R.T.: 5.654 min  
 Delta R.T.: -0.006 min  
 Response: 9635253  
 Conc: 182.12 ng/ml

**Instrument :**  
 ECD\_R  
**ClientSampleId :**  
 BALLFIELD-SS-03072019MSD



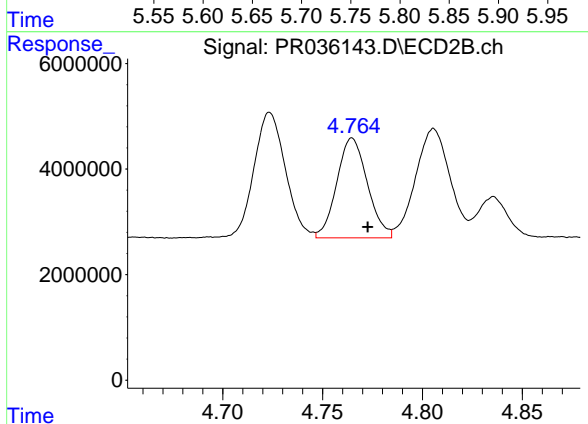
#5 AR-1016-3

R.T.: 4.724 min  
 Delta R.T.: -0.008 min  
 Response: 26364713  
 Conc: 172.24 ng/ml



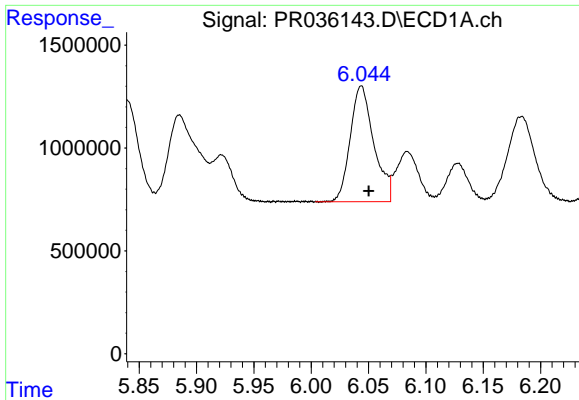
#6 AR-1016-4

R.T.: 5.752 min  
 Delta R.T.: -0.007 min  
 Response: 7742928  
 Conc: 180.00 ng/ml



#6 AR-1016-4

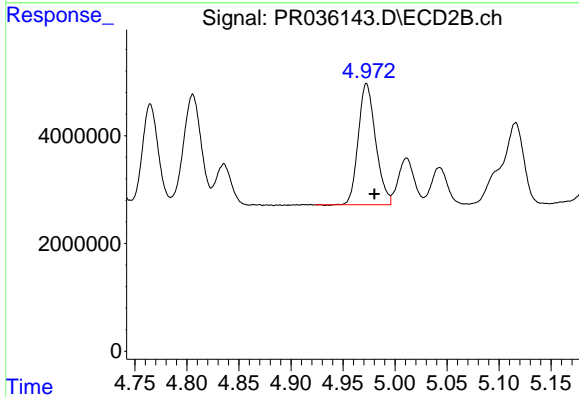
R.T.: 4.765 min  
 Delta R.T.: -0.008 min  
 Response: 20181781  
 Conc: 167.79 ng/ml



#7 AR-1016-5

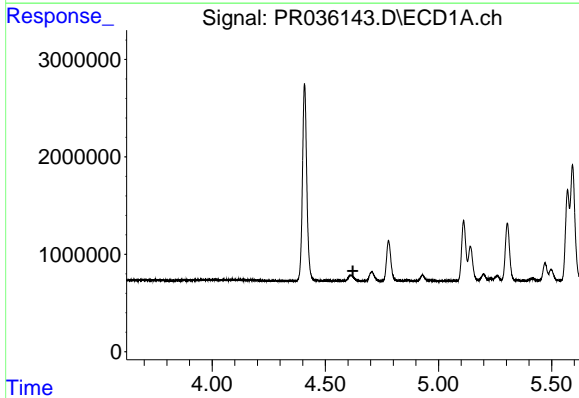
R.T.: 6.044 min  
 Delta R.T.: -0.007 min  
 Response: 8064178  
 Conc: 179.79 ng/ml

**Instrument :**  
 ECD\_R  
**ClientSampleId :**  
 BALLFIELD-SS-03072019MSD



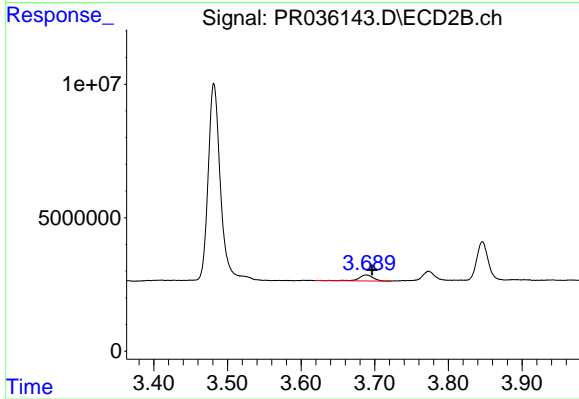
#7 AR-1016-5

R.T.: 4.973 min  
 Delta R.T.: -0.008 min  
 Response: 26065834  
 Conc: 160.76 ng/ml



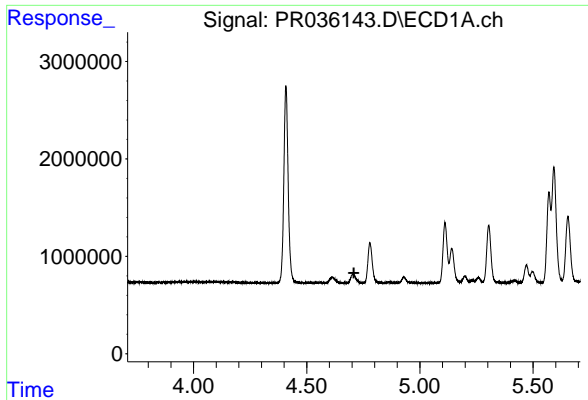
#8 AR-1221-1

R.T.: 0.000 min  
 Exp R.T. : 4.622 min  
 Response: 0  
 Conc: N.D.



#8 AR-1221-1

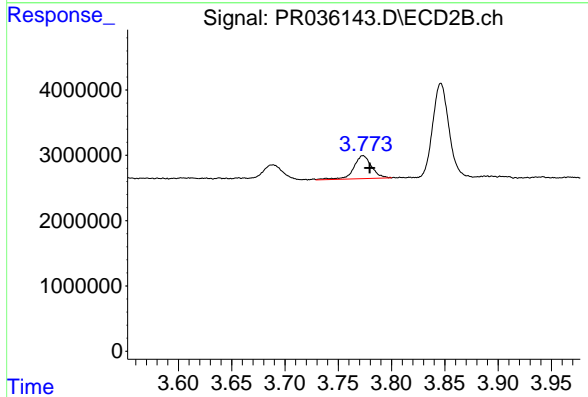
R.T.: 3.688 min  
 Delta R.T.: -0.008 min  
 Response: 2968536  
 Conc: 40.82 ng/ml



#9 AR-1221-2

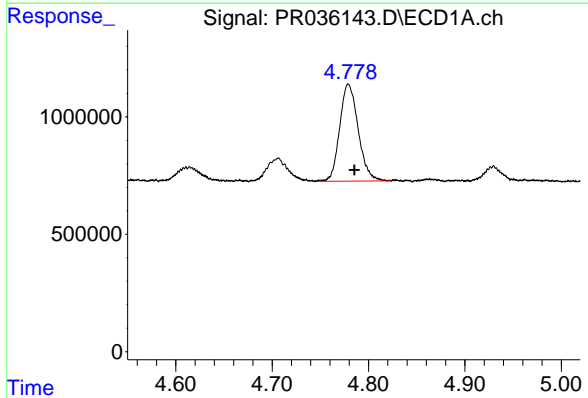
R.T.: 0.000 min  
 Exp R.T.: 4.709 min  
 Response: 0  
 Conc: N.D.

Instrument :  
 ECD\_R  
 ClientSampleId :  
 BALLFIELD-SS-03072019MSD



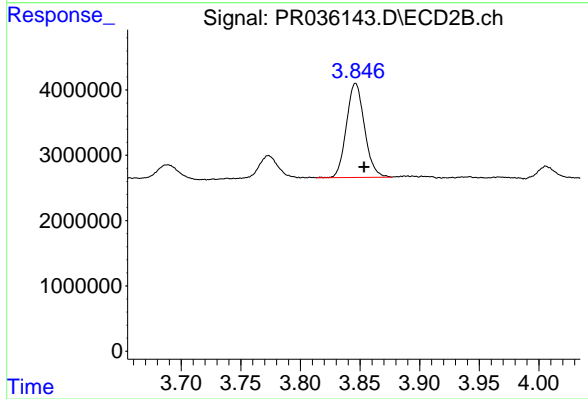
#9 AR-1221-2

R.T.: 3.773 min  
 Delta R.T.: -0.006 min  
 Response: 4111470  
 Conc: 80.31 ng/ml



#10 AR-1221-3

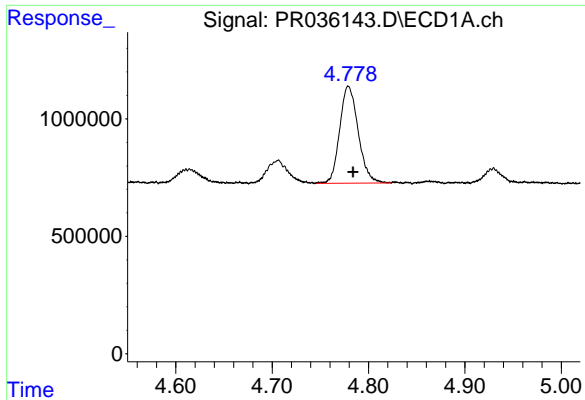
R.T.: 4.779 min  
 Delta R.T.: -0.006 min  
 Response: 5499302  
 Conc: 98.89 ng/ml



#10 AR-1221-3

R.T.: 3.846 min  
 Delta R.T.: -0.007 min  
 Response: 15227821  
 Conc: 85.43 ng/ml

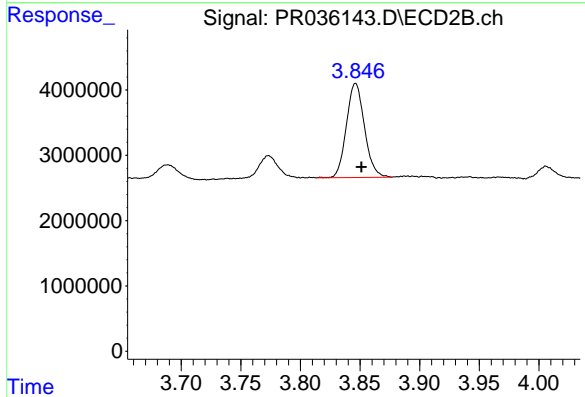




#11 AR-1232-1

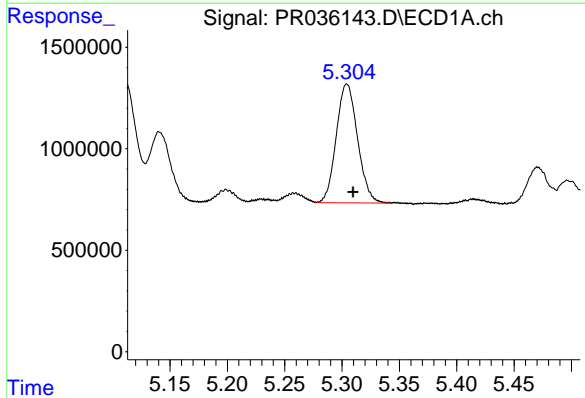
R.T.: 4.779 min  
 Delta R.T.: -0.005 min  
 Response: 5499302  
 Conc: 176.38 ng/ml

Instrument :  
 ECD\_R  
 ClientSampleId :  
 BALLFIELD-SS-03072019MSD



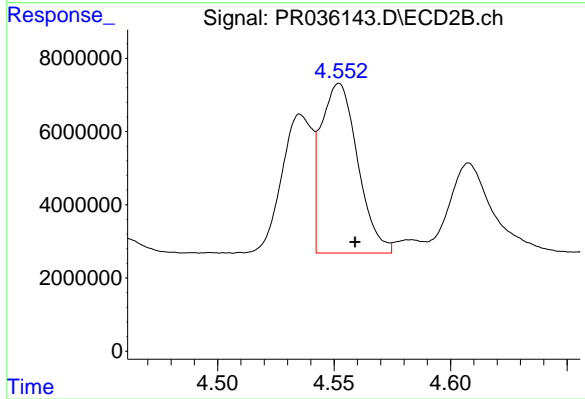
#11 AR-1232-1

R.T.: 3.846 min  
 Delta R.T.: -0.005 min  
 Response: 15227821  
 Conc: 155.73 ng/ml



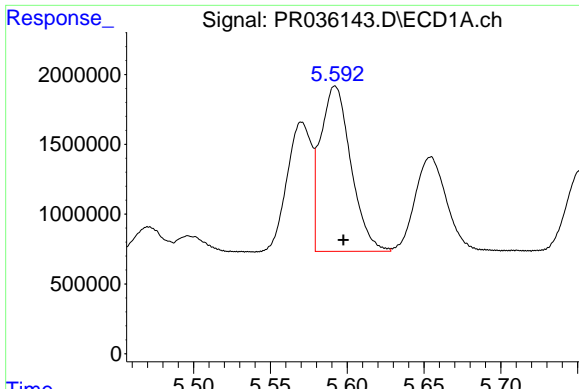
#12 AR-1232-2

R.T.: 5.304 min  
 Delta R.T.: -0.005 min  
 Response: 7568280  
 Conc: 450.73 ng/ml



#12 AR-1232-2

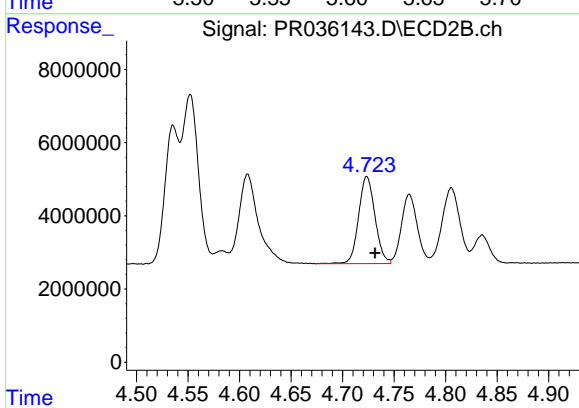
R.T.: 4.552 min  
 Delta R.T.: -0.007 min  
 Response: 50843543  
 Conc: 433.47 ng/ml



#13 AR-1232-3

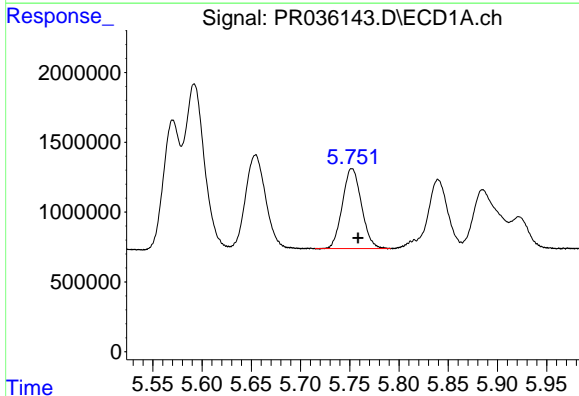
R.T.: 5.592 min  
 Delta R.T.: -0.005 min  
 Response: 16321874  
 Conc: 464.66 ng/ml

Instrument :  
 ECD\_R  
 ClientSampleId :  
 BALLFIELD-SS-03072019MSD



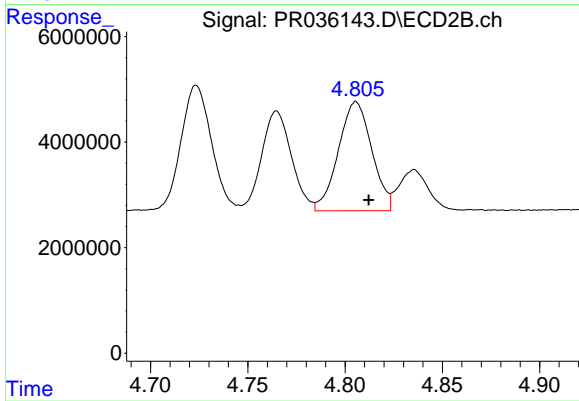
#13 AR-1232-3

R.T.: 4.724 min  
 Delta R.T.: -0.008 min  
 Response: 26364713  
 Conc: 444.78 ng/ml



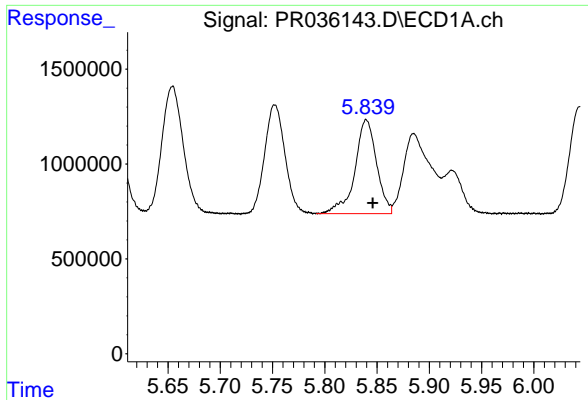
#14 AR-1232-4

R.T.: 5.752 min  
 Delta R.T.: -0.006 min  
 Response: 7742928  
 Conc: 452.50 ng/ml



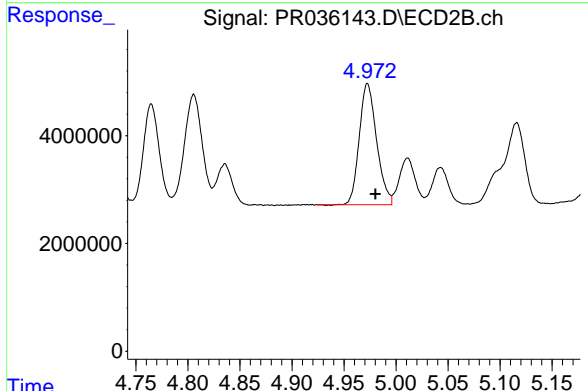
#14 AR-1232-4

R.T.: 4.806 min  
 Delta R.T.: -0.007 min  
 Response: 24690541  
 Conc: 481.83 ng/ml

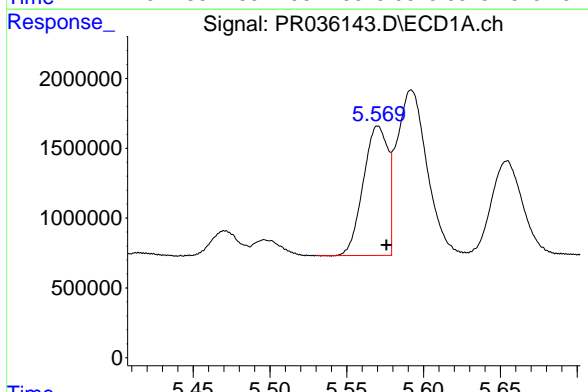


#15 AR-1232-5  
 R.T.: 5.840 min  
 Delta R.T.: -0.006 min  
 Response: 7146305  
 Conc: 511.32 ng/ml

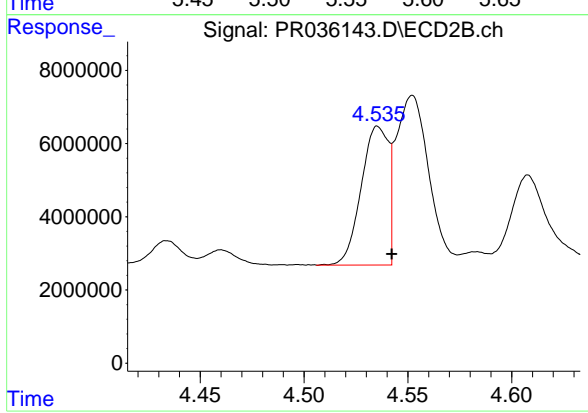
**Instrument :**  
 ECD\_R  
**ClientSampleId :**  
 BALLFIELD-SS-03072019MSD



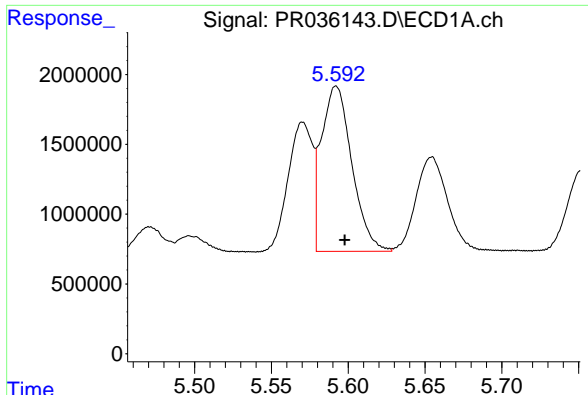
#15 AR-1232-5  
 R.T.: 4.973 min  
 Delta R.T.: -0.008 min  
 Response: 26065834  
 Conc: 446.20 ng/ml



#16 AR-1242-1  
 R.T.: 5.570 min  
 Delta R.T.: -0.006 min  
 Response: 10343692  
 Conc: 236.07 ng/ml



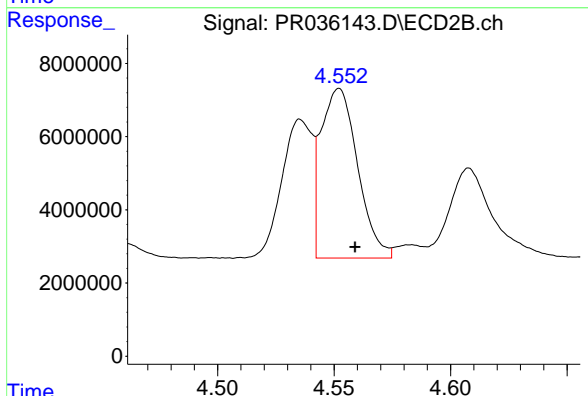
#16 AR-1242-1  
 R.T.: 4.536 min  
 Delta R.T.: -0.007 min  
 Response: 34449776  
 Conc: 231.55 ng/ml



#17 AR-1242-2

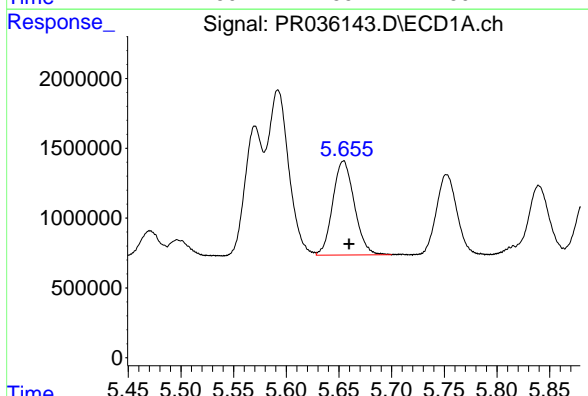
R.T.: 5.592 min  
 Delta R.T.: -0.006 min  
 Response: 16321874  
 Conc: 238.29 ng/ml

Instrument :  
 ECD\_R  
 ClientSampleId :  
 BALLFIELD-SS-03072019MSD



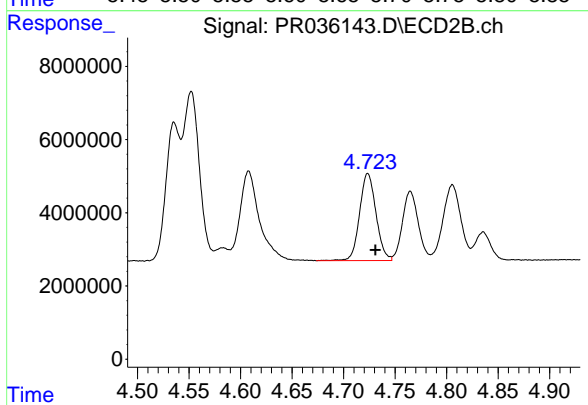
#17 AR-1242-2

R.T.: 4.552 min  
 Delta R.T.: -0.007 min  
 Response: 50843543  
 Conc: 217.42 ng/ml



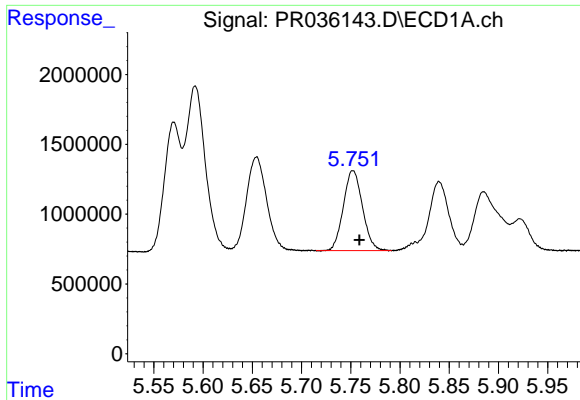
#18 AR-1242-3

R.T.: 5.654 min  
 Delta R.T.: -0.005 min  
 Response: 9635253  
 Conc: 230.54 ng/ml



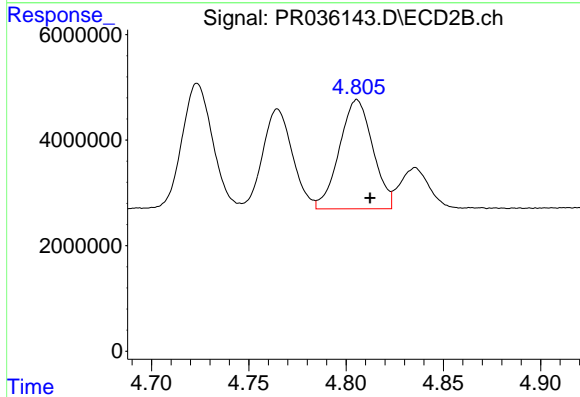
#18 AR-1242-3

R.T.: 4.724 min  
 Delta R.T.: -0.007 min  
 Response: 26364713  
 Conc: 219.44 ng/ml

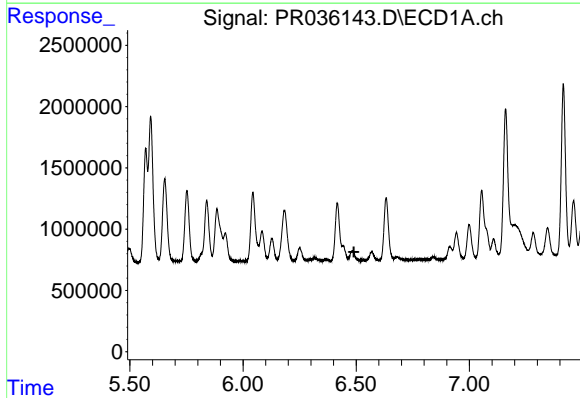


#19 AR-1242-4  
 R.T.: 5.752 min  
 Delta R.T.: -0.007 min  
 Response: 7742928  
 Conc: 225.38 ng/ml

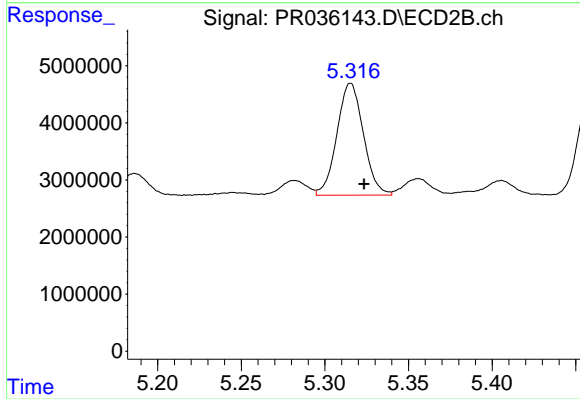
**Instrument :**  
 ECD\_R  
**ClientSampleId :**  
 BALLFIELD-SS-03072019MSD



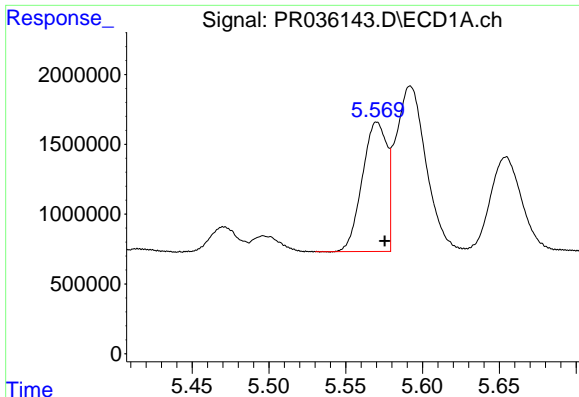
#19 AR-1242-4  
 R.T.: 4.806 min  
 Delta R.T.: -0.007 min  
 Response: 24690541  
 Conc: 215.82 ng/ml



#20 AR-1242-5  
 R.T.: 0.000 min  
 Exp R.T. : 6.490 min  
 Response: 0  
 Conc: N.D.



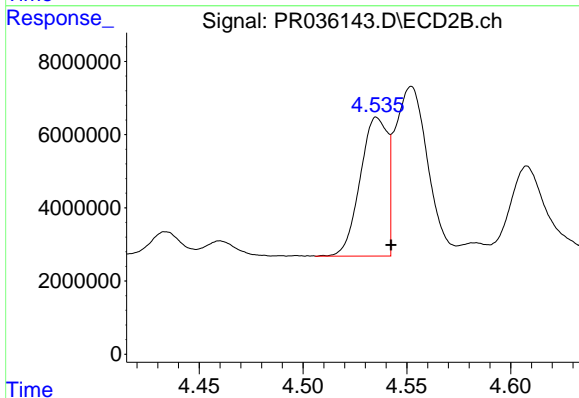
#20 AR-1242-5  
 R.T.: 5.315 min  
 Delta R.T.: -0.008 min  
 Response: 21634456  
 Conc: 122.59 ng/ml



#21 AR-1248-1

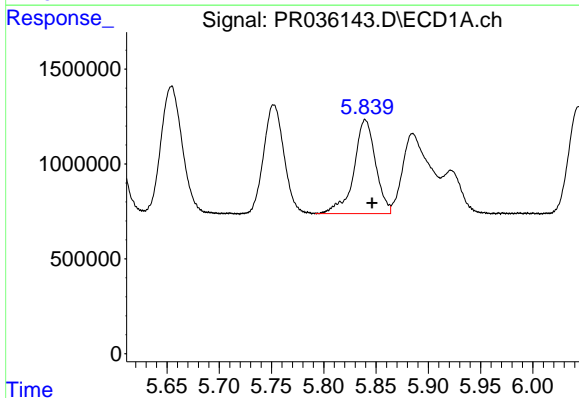
R.T.: 5.570 min  
Delta R.T.: -0.005 min  
Response: 10343692  
Conc: 294.97 ng/ml

Instrument :  
ECD\_R  
ClientSampleId :  
BALLFIELD-SS-03072019MSD



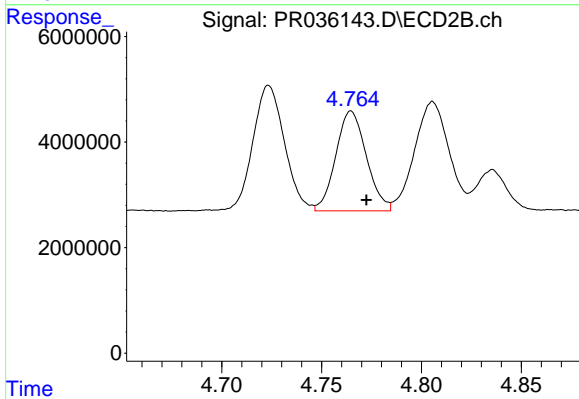
#21 AR-1248-1

R.T.: 4.536 min  
Delta R.T.: -0.007 min  
Response: 34449776  
Conc: 286.15 ng/ml



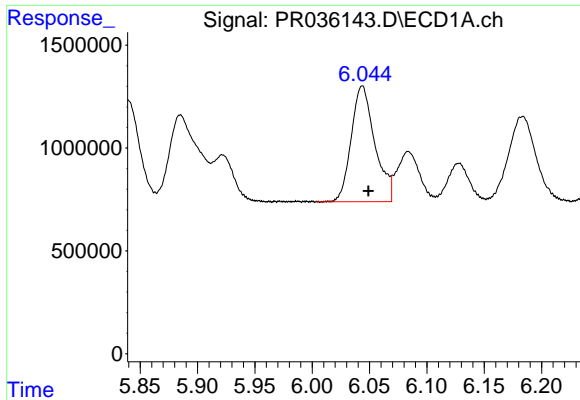
#22 AR-1248-2

R.T.: 5.840 min  
Delta R.T.: -0.006 min  
Response: 7146305  
Conc: 136.07 ng/ml



#22 AR-1248-2

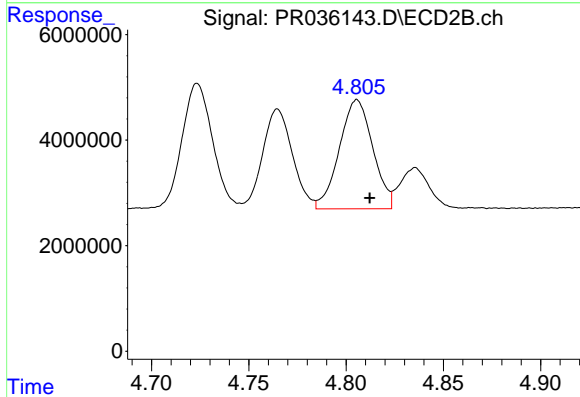
R.T.: 4.765 min  
Delta R.T.: -0.008 min  
Response: 20181781  
Conc: 122.54 ng/ml



#23 AR-1248-3

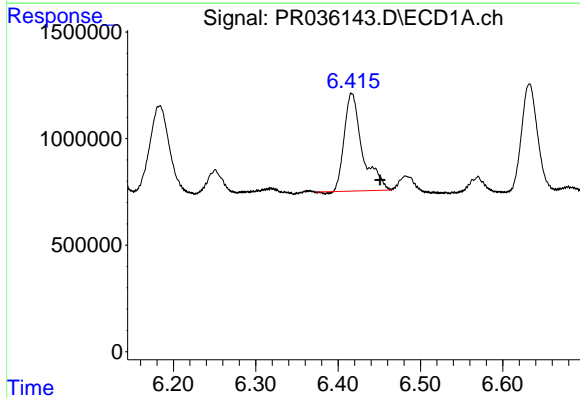
R.T.: 6.044 min  
 Delta R.T.: -0.005 min  
 Response: 8064178  
 Conc: 135.98 ng/ml

**Instrument :**  
 ECD\_R  
**ClientSampleId :**  
 BALLFIELD-SS-03072019MSD



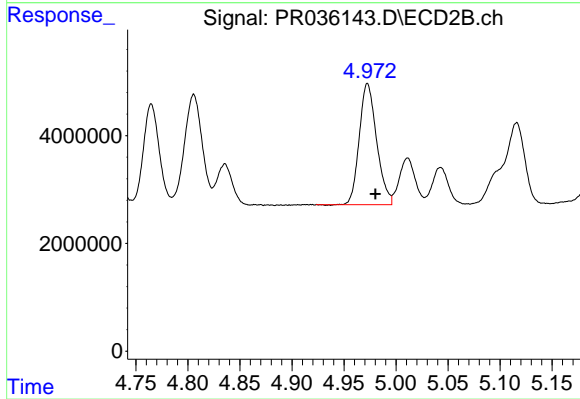
#23 AR-1248-3

R.T.: 4.806 min  
 Delta R.T.: -0.007 min  
 Response: 24690541  
 Conc: 145.90 ng/ml



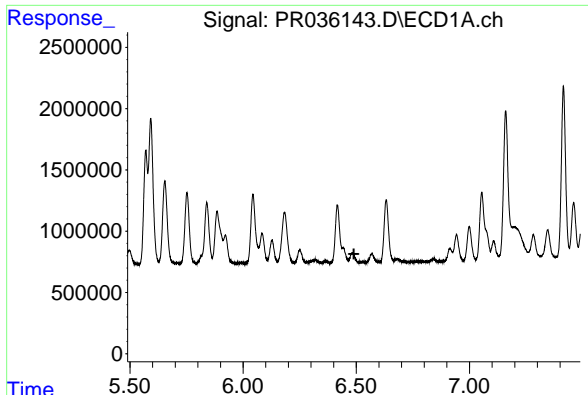
#24 AR-1248-4

R.T.: 6.417 min  
 Delta R.T.: -0.034 min  
 Response: 7003455  
 Conc: 101.17 ng/ml



#24 AR-1248-4

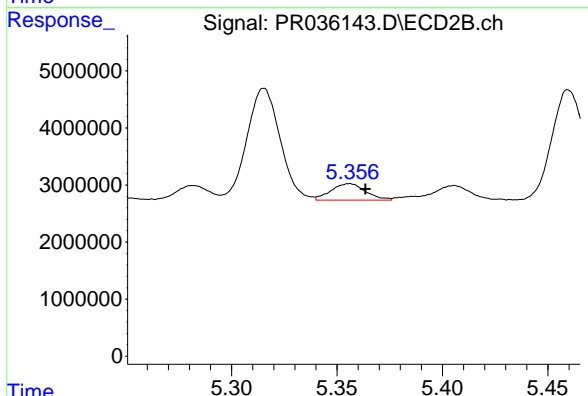
R.T.: 4.973 min  
 Delta R.T.: -0.007 min  
 Response: 26065834  
 Conc: 111.48 ng/ml



#25 AR-1248-5

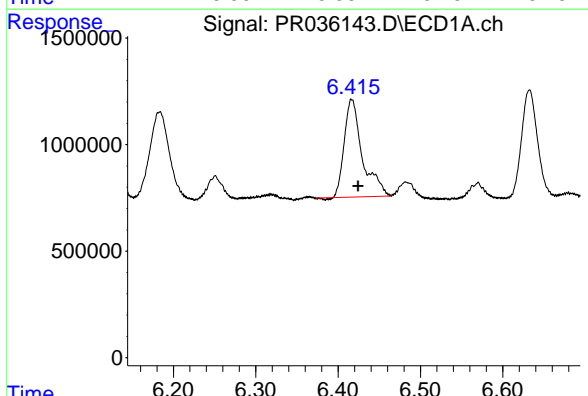
R.T.: 0.000 min  
 Exp R.T.: 6.489 min  
 Response: 0  
 Conc: N.D.

Instrument :  
 ECD\_R  
 ClientSampleId :  
 BALLFIELD-SS-03072019MSD



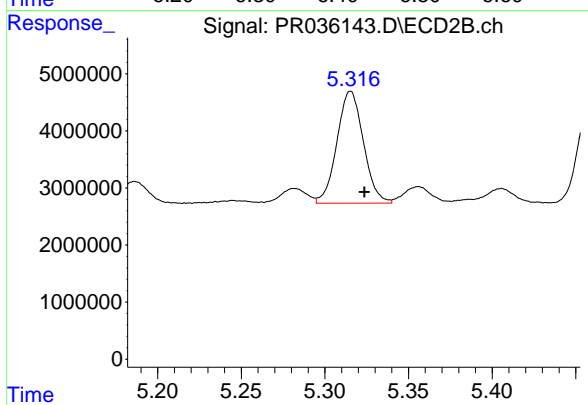
#25 AR-1248-5

R.T.: 5.356 min  
 Delta R.T.: -0.007 min  
 Response: 3298206  
 Conc: 13.94 ng/ml



#26 AR-1254-1

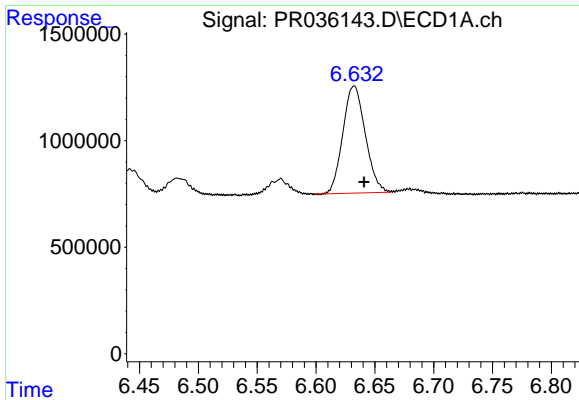
R.T.: 6.417 min  
 Delta R.T.: -0.008 min  
 Response: 7003455  
 Conc: 111.61 ng/ml



#26 AR-1254-1

R.T.: 5.315 min  
 Delta R.T.: -0.008 min  
 Response: 21634456  
 Conc: 72.94 ng/ml

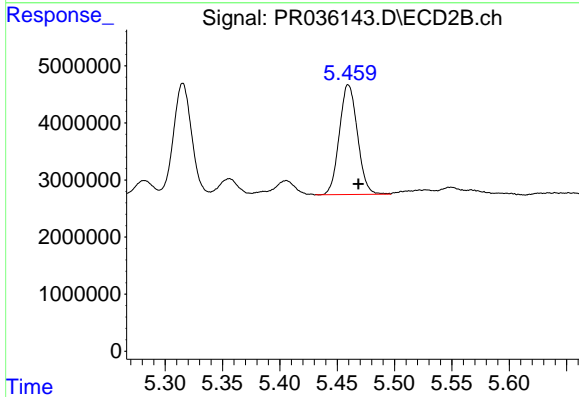




#27 AR-1254-2

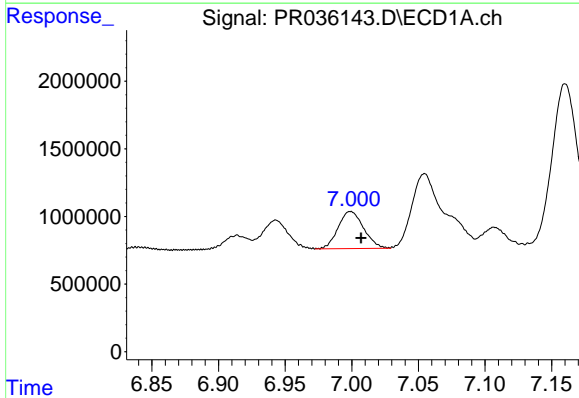
R.T.: 6.632 min  
 Delta R.T.: -0.009 min  
 Response: 6689715  
 Conc: 73.47 ng/ml

**Instrument :**  
 ECD\_R  
**ClientSampled :**  
 BALLFIELD-SS-03072019MSD



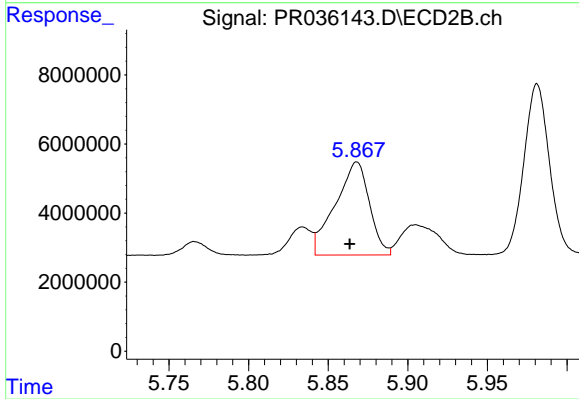
#27 AR-1254-2

R.T.: 5.460 min  
 Delta R.T.: -0.009 min  
 Response: 21178389  
 Conc: 81.25 ng/ml



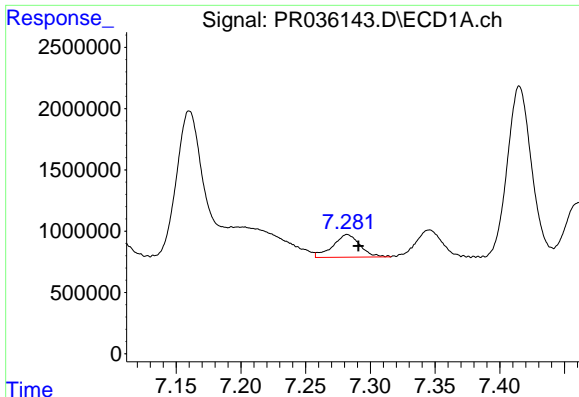
#28 AR-1254-3

R.T.: 6.999 min  
 Delta R.T.: -0.008 min  
 Response: 3660818  
 Conc: 35.16 ng/ml



#28 AR-1254-3

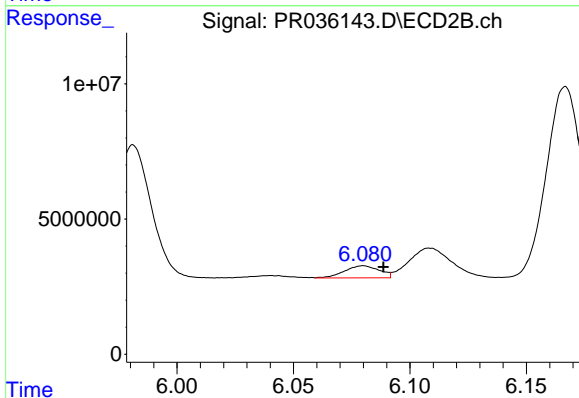
R.T.: 5.868 min  
 Delta R.T.: 0.004 min  
 Response: 40169604  
 Conc: 90.58 ng/ml



#29 AR-1254-4

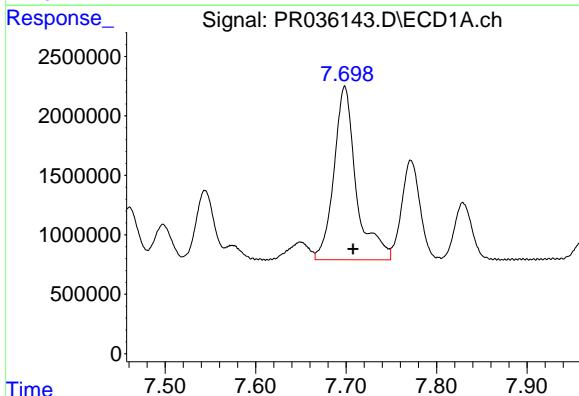
R.T.: 7.282 min  
 Delta R.T.: -0.009 min  
 Response: 2710177  
 Conc: 34.61 ng/ml

Instrument :  
 ECD\_R  
 ClientSampleId :  
 BALLFIELD-SS-03072019MSD



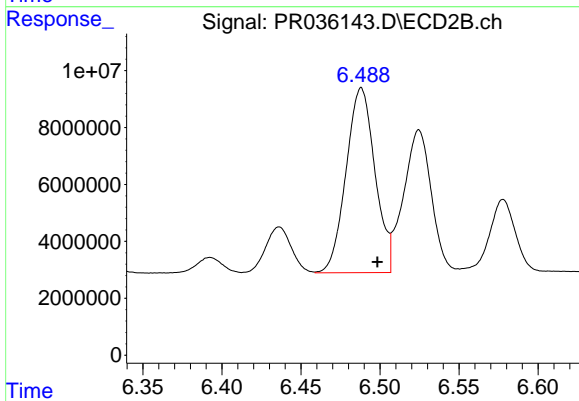
#29 AR-1254-4

R.T.: 6.080 min  
 Delta R.T.: -0.009 min  
 Response: 4654754  
 Conc: 14.85 ng/ml



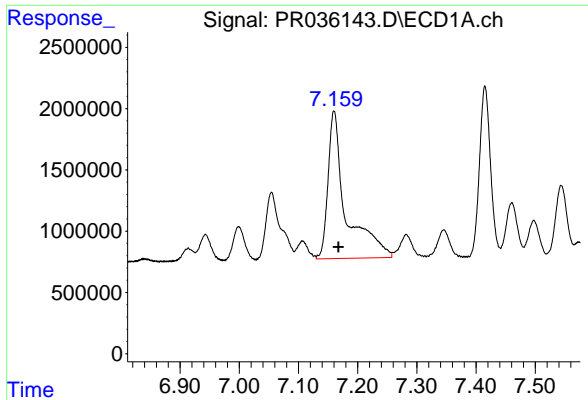
#30 AR-1254-5

R.T.: 7.699 min  
 Delta R.T.: -0.009 min  
 Response: 25076150  
 Conc: 258.50 ng/ml



#30 AR-1254-5

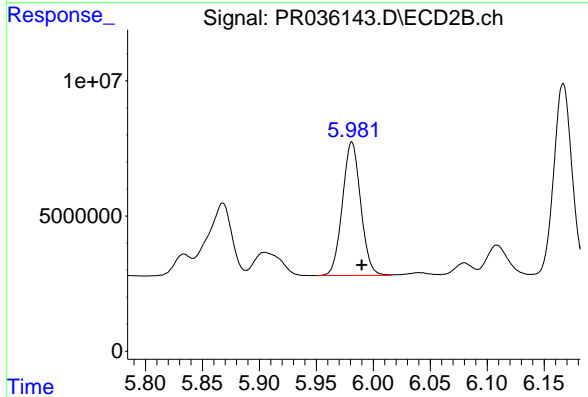
R.T.: 6.488 min  
 Delta R.T.: -0.010 min  
 Response: 82591744  
 Conc: 197.30 ng/ml



#31 AR-1260-1

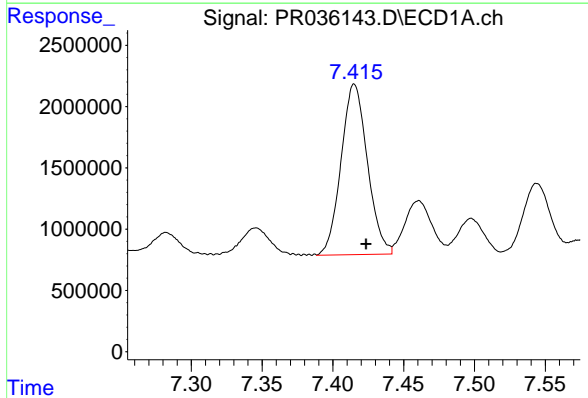
R.T.: 7.160 min  
 Delta R.T.: -0.008 min  
 Response: 25452430  
 Conc: 262.12 ng/ml

**Instrument :**  
 ECD\_R  
**ClientSampleId :**  
 BALLFIELD-SS-03072019MSD



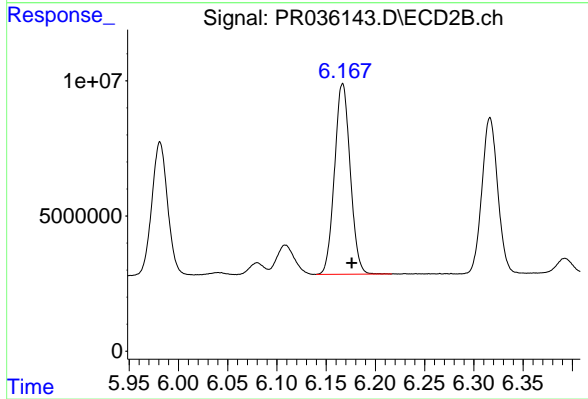
#31 AR-1260-1

R.T.: 5.981 min  
 Delta R.T.: -0.009 min  
 Response: 55089537  
 Conc: 151.28 ng/ml



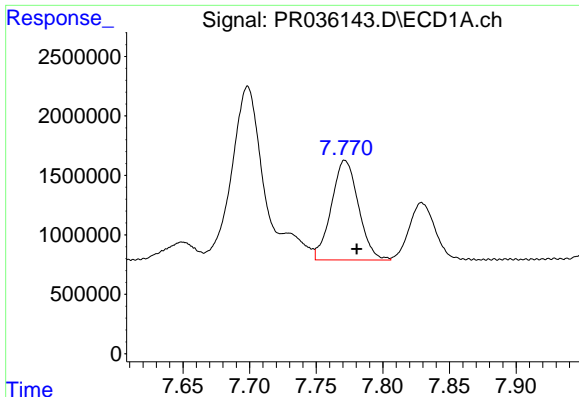
#32 AR-1260-2

R.T.: 7.415 min  
 Delta R.T.: -0.008 min  
 Response: 18011565  
 Conc: 156.51 ng/ml



#32 AR-1260-2

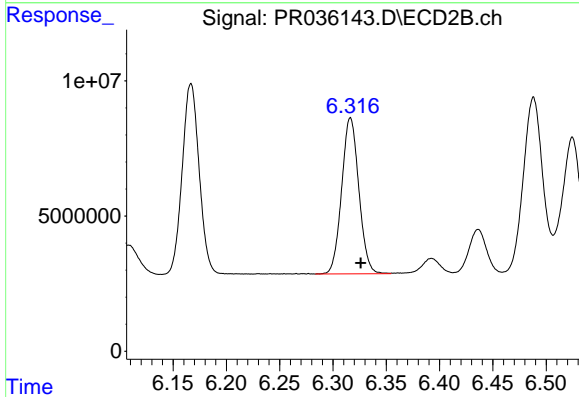
R.T.: 6.167 min  
 Delta R.T.: -0.009 min  
 Response: 78256318  
 Conc: 149.81 ng/ml



#33 AR-1260-3

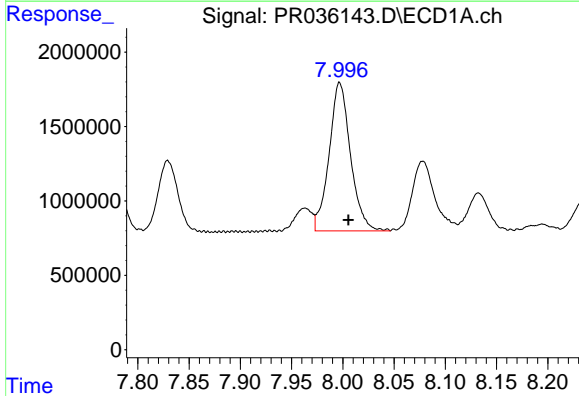
R.T.: 7.772 min  
 Delta R.T.: -0.009 min  
 Response: 11870119  
 Conc: 161.27 ng/ml

Instrument :  
 ECD\_R  
 ClientSampleId :  
 BALLFIELD-SS-03072019MSD



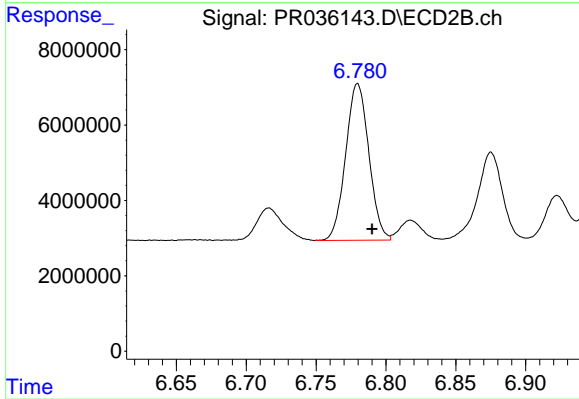
#33 AR-1260-3

R.T.: 6.316 min  
 Delta R.T.: -0.010 min  
 Response: 64717400  
 Conc: 147.86 ng/ml



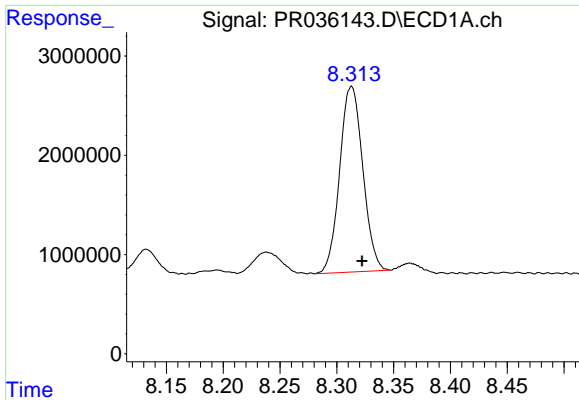
#34 AR-1260-4

R.T.: 7.997 min  
 Delta R.T.: -0.009 min  
 Response: 14493210  
 Conc: 153.61 ng/ml



#34 AR-1260-4

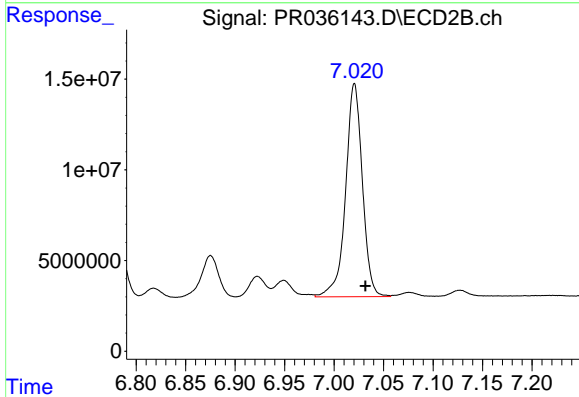
R.T.: 6.780 min  
 Delta R.T.: -0.010 min  
 Response: 48046374  
 Conc: 155.18 ng/ml



#35 AR-1260-5

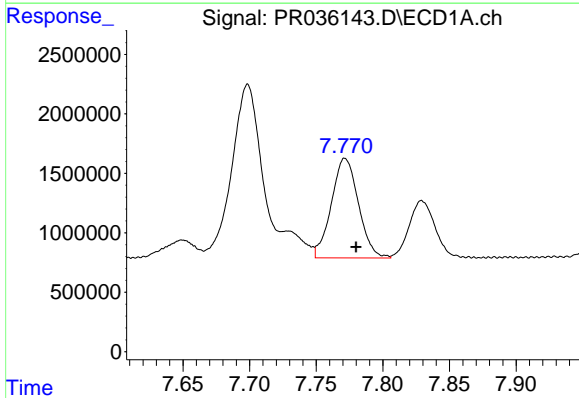
R.T.: 8.313 min  
 Delta R.T.: -0.009 min  
 Response: 26521894  
 Conc: 157.28 ng/ml

Instrument :  
 ECD\_R  
 ClientSampleId :  
 BALLFIELD-SS-03072019MSD



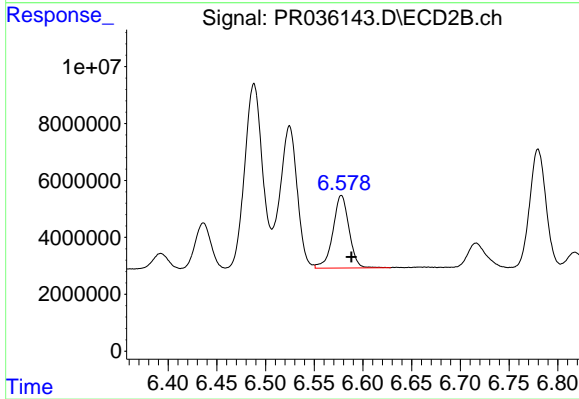
#35 AR-1260-5

R.T.: 7.021 min  
 Delta R.T.: -0.011 min  
 Response: 138693623  
 Conc: 153.56 ng/ml



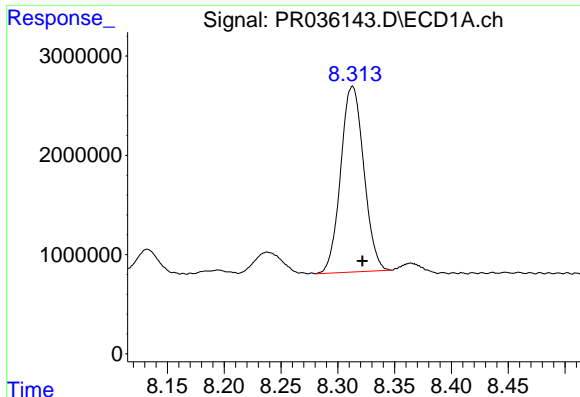
#36 AR-1262-1

R.T.: 7.772 min  
 Delta R.T.: -0.008 min  
 Response: 11870119  
 Conc: 110.77 ng/ml



#36 AR-1262-1

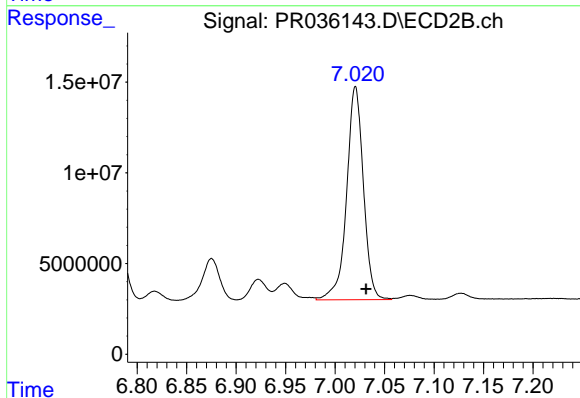
R.T.: 6.578 min  
 Delta R.T.: -0.010 min  
 Response: 29390824  
 Conc: 145.93 ng/ml



#37 AR-1262-2

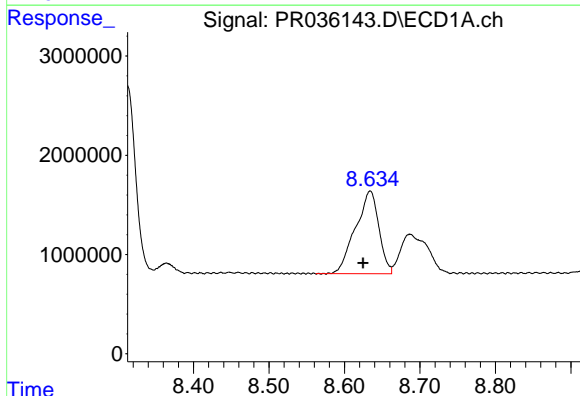
R.T.: 8.313 min  
Delta R.T.: -0.009 min  
Response: 26521894  
Conc: 133.31 ng/ml

Instrument :  
ECD\_R  
ClientSampleId :  
BALLFIELD-SS-03072019MSD



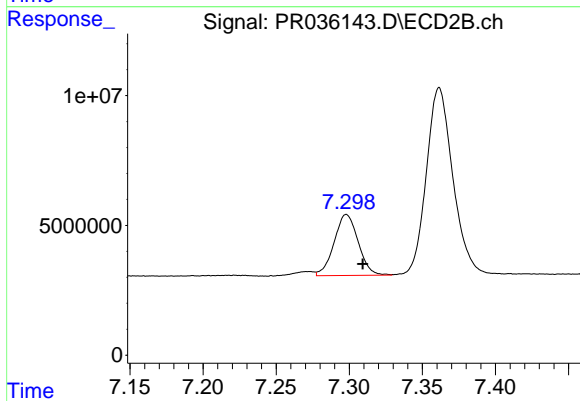
#37 AR-1262-2

R.T.: 7.021 min  
Delta R.T.: -0.011 min  
Response: 138693623  
Conc: 133.10 ng/ml



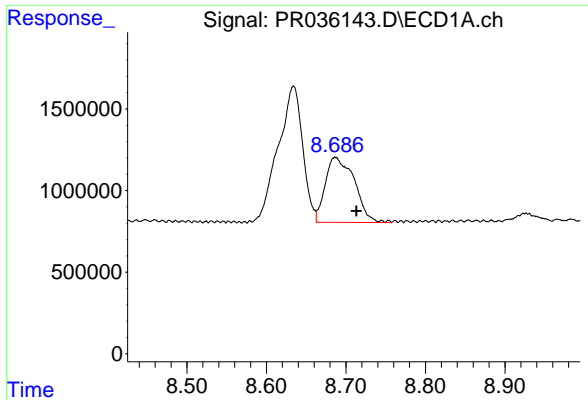
#38 AR-1262-3

R.T.: 8.634 min  
Delta R.T.: 0.009 min  
Response: 17927038  
Conc: 132.25 ng/ml



#38 AR-1262-3

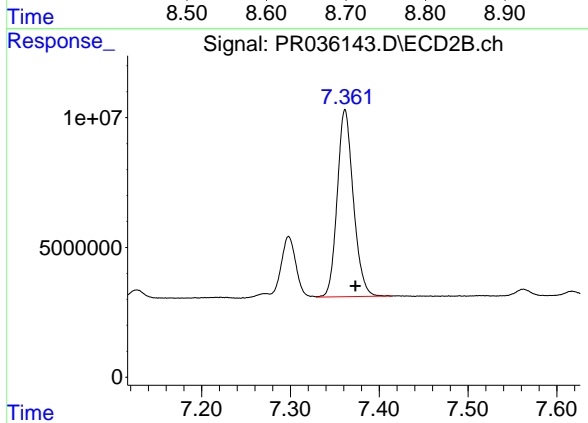
R.T.: 7.298 min  
Delta R.T.: -0.011 min  
Response: 26948233  
Conc: 65.84 ng/ml



#39 AR-1262-4

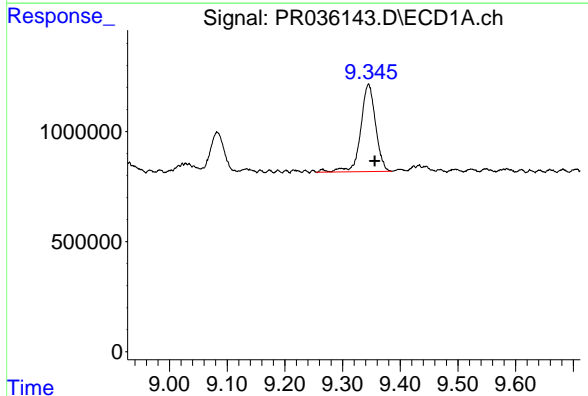
R.T.: 8.687 min  
 Delta R.T.: -0.026 min  
 Response: 10167163  
 Conc: 98.24 ng/ml

Instrument :  
 ECD\_R  
 ClientSampleId :  
 BALLFIELD-SS-03072019MSD



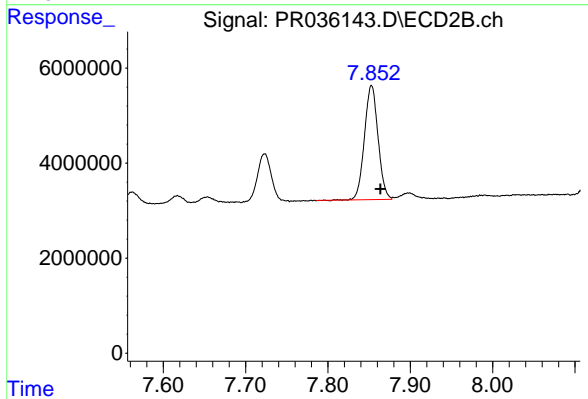
#39 AR-1262-4

R.T.: 7.362 min  
 Delta R.T.: -0.012 min  
 Response: 90881915  
 Conc: 125.69 ng/ml



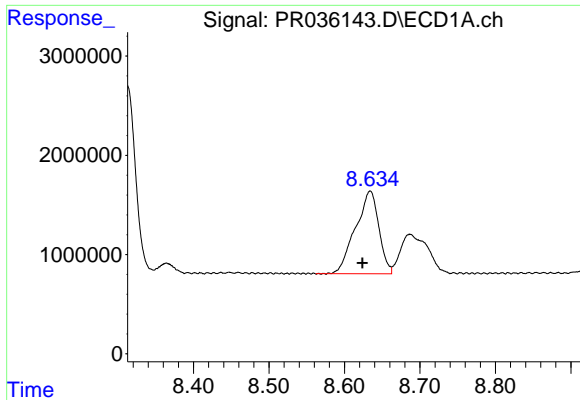
#40 AR-1262-5

R.T.: 9.345 min  
 Delta R.T.: -0.011 min  
 Response: 7103732  
 Conc: 100.07 ng/ml



#40 AR-1262-5

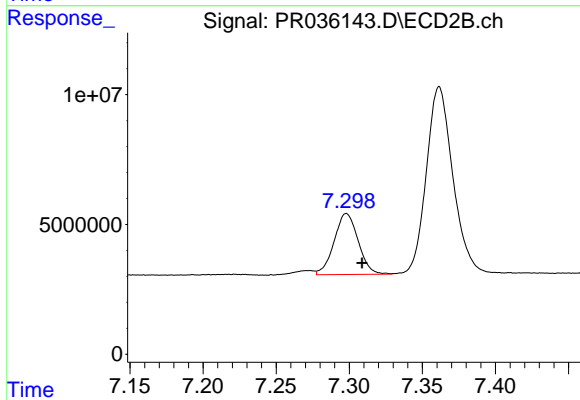
R.T.: 7.853 min  
 Delta R.T.: -0.011 min  
 Response: 27594567  
 Conc: 83.99 ng/ml



#41 AR-1268-1

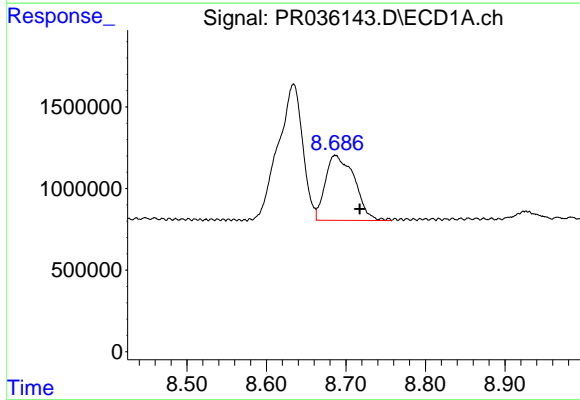
R.T.: 8.634 min  
 Delta R.T.: 0.010 min  
 Response: 17927038  
 Conc: 74.42 ng/ml

Instrument :  
 ECD\_R  
 ClientSampleId :  
 BALLFIELD-SS-03072019MSD



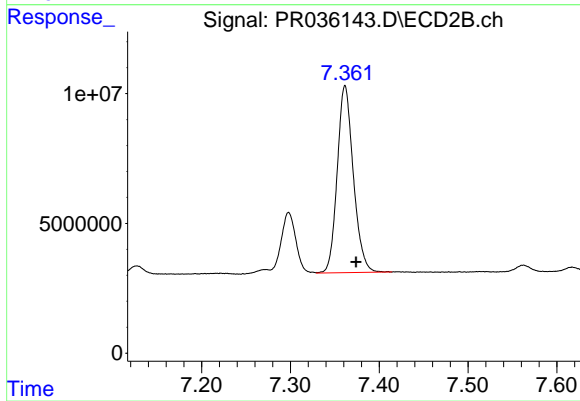
#41 AR-1268-1

R.T.: 7.298 min  
 Delta R.T.: -0.011 min  
 Response: 26948233  
 Conc: 21.32 ng/ml



#42 AR-1268-2

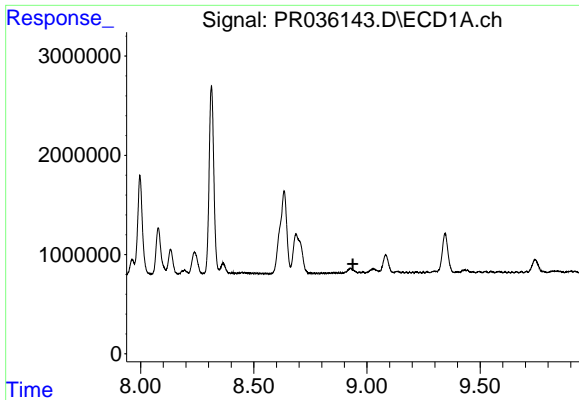
R.T.: 8.687 min  
 Delta R.T.: -0.031 min  
 Response: 10167163  
 Conc: 46.56 ng/ml



#42 AR-1268-2

R.T.: 7.362 min  
 Delta R.T.: -0.012 min  
 Response: 90881915  
 Conc: 80.15 ng/ml

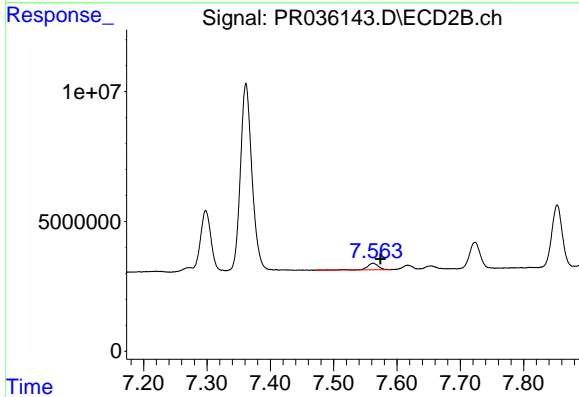




#43 AR-1268-3

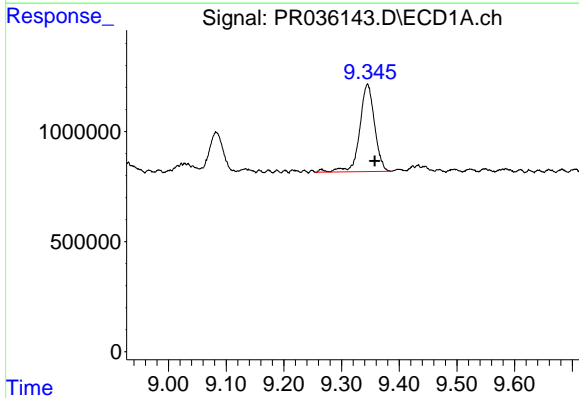
R.T.: 0.000 min  
 Exp R.T.: 8.938 min  
 Response: 0  
 Conc: N.D.

Instrument :  
 ECD\_R  
 ClientSampleId :  
 BALLFIELD-SS-03072019MSD



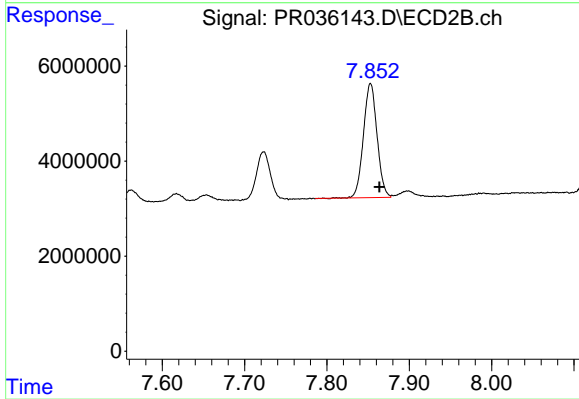
#43 AR-1268-3

R.T.: 7.562 min  
 Delta R.T.: -0.011 min  
 Response: 3030299  
 Conc: 3.09 ng/ml



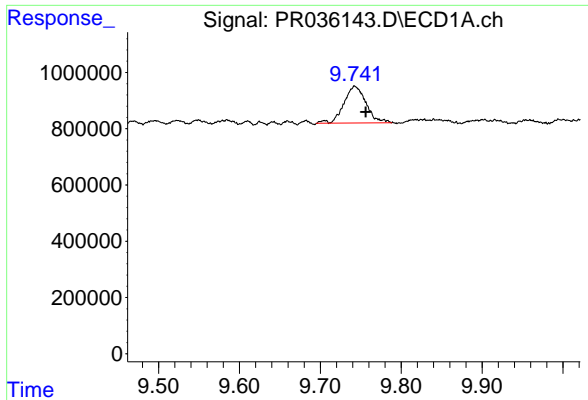
#44 AR-1268-4

R.T.: 9.345 min  
 Delta R.T.: -0.012 min  
 Response: 7103732  
 Conc: 93.58 ng/ml



#44 AR-1268-4

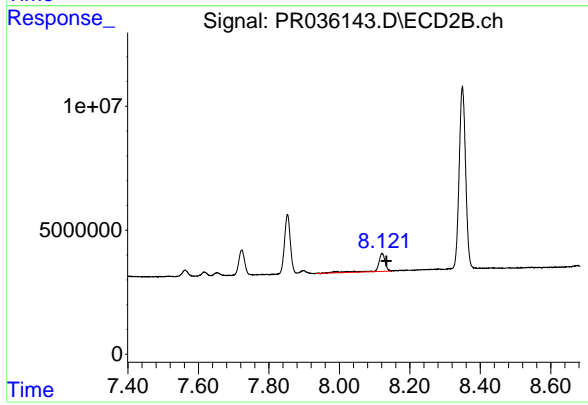
R.T.: 7.853 min  
 Delta R.T.: -0.011 min  
 Response: 27594567  
 Conc: 77.14 ng/ml



#45 AR-1268-5

R.T.: 9.743 min  
Delta R.T.: -0.013 min  
Response: 2461917  
Conc: 4.48 ng/ml

Instrument :  
ECD\_R  
ClientSampleId :  
BALLFIELD-SS-03072019MSD



#45 AR-1268-5

R.T.: 8.121 min  
Delta R.T.: -0.012 min  
Response: 10420964  
Conc: 3.92 ng/ml